

THE REVIEW

IGNITE YOUR SPARK! Celebrate. Connect. Shine Brighter Together



As 2025 Draws to a Close...

We want to take a moment to celebrate the incredible impact of our students. This department would not be what it is without your dedication, compassion, and willingness to learn. Every caring hand you extended and every effort you made to ensure the safety and well-being of our patients reflects the very heart of healthcare.

Your commitment has not only supported our mission—it has inspired us all. Thank you for bringing your light, your energy, and your passion to this journey. Together, we’ve made a difference, and together, we’ll continue to ignite hope and healing.



Just remember, the true spirit of Christmas lies in your heart.”
Santa from the Polar Express

LOOKING FOR THE LATEST UPDATES?

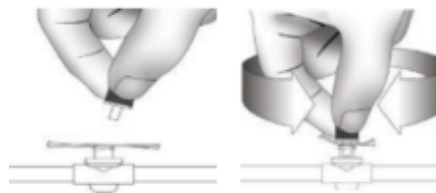
Head over to PolicyStat on K-Net to find all the current policies and procedures. It’s the easiest way to stay informed and keep everything running smoothly!



DECEMBER GRADUATES
WE ARE GLAD YOU CHOSE NKC!

In this issue, we are highlighting key points for Recirculation of Blood during Treatment Interruptions (Includes Restroom Use and Air in Lines) and Re-Cleaning LockSite Port

- Disinfect LockSite by laying an alcohol pad over female luer opening, clean with male end of cap with rotation motion for 30 seconds.



Note when recirculation time is initiated due to interruption, maximum time to keep the set-up is 30 minutes.

(See PolicyStat for full instruction.)

“Together, let’s keep every patient safe and every process strong!”

- Wolfgang Moreno RN - Yesler Terrace
- Bibiana Garcia, DT, Lake City

Contact Us
Educationlist@nwkidney.org

