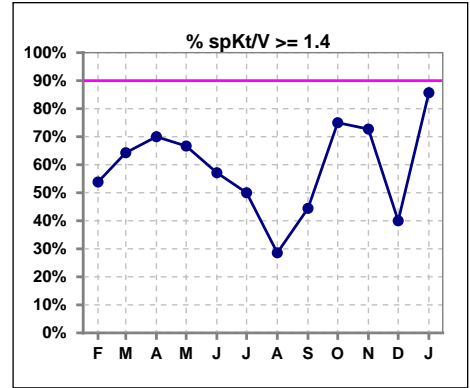
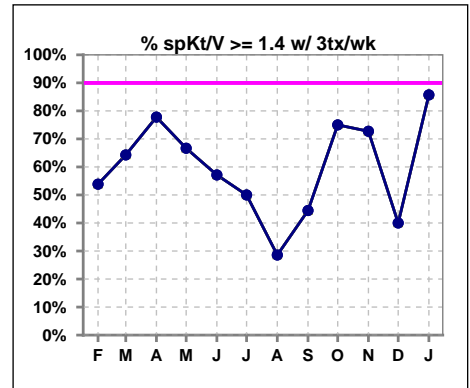


## I. ADEQUACY OF DIALYSIS

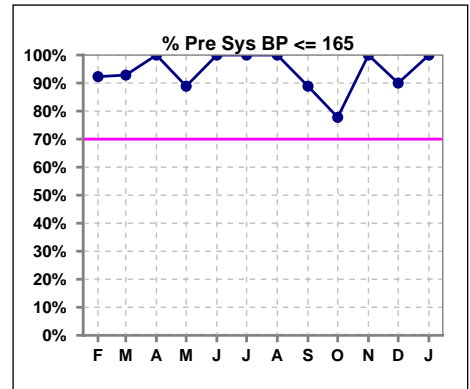
	Feb	Mar	Apr	May	Jun	Jul	Aug	Sep	Oct	Nov	Dec	Jan
# spKt/V	13	14	10	9	7	6	7	9	8	11	10	7
# spKt/V >= 1.4	7	9	7	6	4	3	2	4	6	8	4	6
Pop. Mean	1.50	1.55	1.62	1.49	1.52	1.53	1.43	1.47	1.57	1.69	1.52	1.46
Std. Deviation	0.39	0.32	0.49	0.59	0.31	0.46	0.35	0.23	0.23	0.40	0.39	0.06
% spKt/V >= 1.4	54%	64%	70%	67%	57%	50%	29%	44%	75%	73%	40%	86%
% spKt/V >= 1.2	85%	100%	90%	89%	100%	83%	86%	100%	100%	91%	90%	100%



	Feb	Mar	Apr	May	Jun	Jul	Aug	Sep	Oct	Nov	Dec	Jan
# spKt/V w/ 3tx/wk	13	14	9	9	7	6	7	9	8	11	10	7
# spKt/V >= 1.4 w/3tx/wk	7	9	7	6	4	3	2	4	6	8	4	6
Pop. Mean	1.50	1.55	1.70	1.49	1.52	1.53	1.43	1.47	1.57	1.69	1.52	1.46
Std. Deviation	0.39	0.32	0.45	0.59	0.31	0.46	0.35	0.23	0.23	0.40	0.39	0.06
% spKt/V >= 1.4 w/3tx/wk	54%	64%	78%	67%	57%	50%	29%	44%	75%	73%	40%	86%



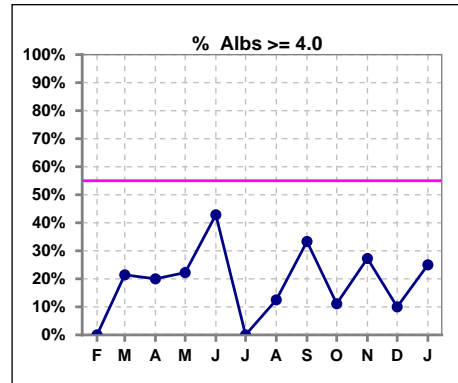
	Feb	Mar	Apr	May	Jun	Jul	Aug	Sep	Oct	Nov	Dec	Jan
# Pre Sys BP	13	14	10	9	7	7	8	9	9	11	10	8
# Pre Sys BP <= 165	12	14	10	8	7	7	8	8	7	11	9	8
Pop. Mean	140	133	137	146	138	125	127	137	143	134	139	141
Std. Deviation	19.6	16.4	15.2	23.8	17.0	13.2	18.3	22.8	16.1	17.6	20.9	15.8
% Pre Sys BP <= 165	92%	93%	100%	89%	100%	100%	100%	89%	78%	100%	90%	100%



\*Albumin values use BCG method - as of July 2001

## II. NUTRITION

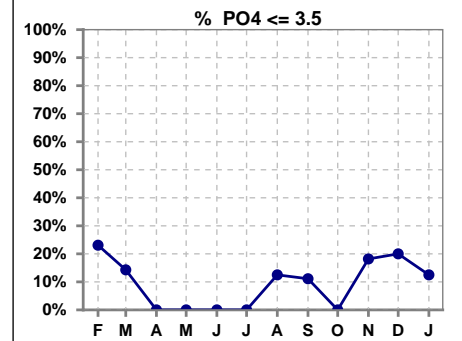
	Feb	Mar	Apr	May	Jun	Jul	Aug	Sep	Oct	Nov	Dec	Jan
# Albumin	13	14	10	9	7	7	8	9	9	11	10	8
# Albumin >= 4.0	0	3	2	2	3	0	1	3	1	3	1	2
Pop. Mean	3.3	3.5	3.6	3.6	3.9	3.3	3.8	3.6	3.6	3.6	3.3	3.5
Std. Deviation	0.40	0.50	0.42	0.44	0.48	0.44	0.29	0.63	0.68	0.56	0.48	0.46
% Alb >= 4.0	0%	21%	20%	22%	43%	0%	13%	33%	11%	27%	10%	25%



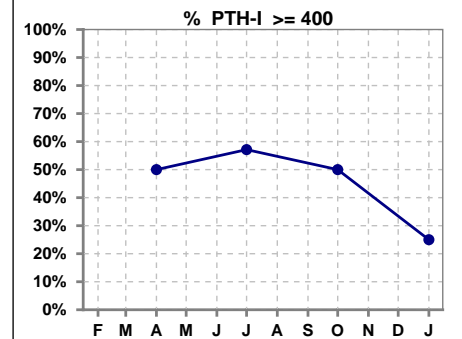
Lab methodology for PTH changed January 2012

### III. OSTEODYSTROPHY

	Feb	Mar	Apr	May	Jun	Jul	Aug	Sep	Oct	Nov	Dec	Jan
# PO4	13	14	10	9	7	7	8	9	9	11	10	8
# PO4 <= 3.5	3	2	0	0	0	0	1	1	0	2	2	1
Pop. Mean	5.5	5.7	5.6	5.7	6.2	6.8	5.3	6.6	7.0	4.9	5.9	5.9
Std. Deviation	1.93	1.95	1.57	1.80	1.68	3.64	1.58	2.92	2.61	1.91	3.14	2.99
% PO4 <= 3.5	23%	14%	0%	0%	0%	0%	13%	11%	0%	18%	20%	13%



	Feb	Mar	Apr	May	Jun	Jul	Aug	Sep	Oct	Nov	Dec	Jan
# PTH-I			10			7			6			8
# PTH-I >= 400			5			4			3			2
Pop. Mean			527			444			957			278
Std. Deviation			431			210			1333			161
% PTH-I >= 400			50%			57%			50%			25%

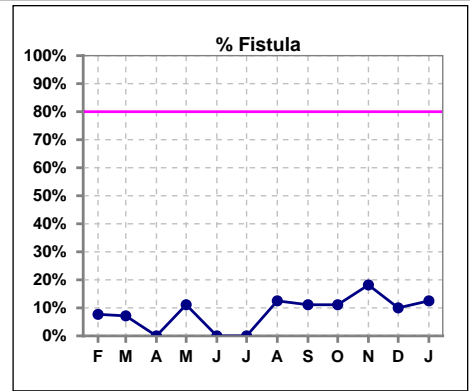


**Yesler Terrace Kidney Center - Center Hemodialysis**  
**Quality Assurance Reports (Patients in first 90 days of treatment)**  
 Through period ending Jan. 31, 2026

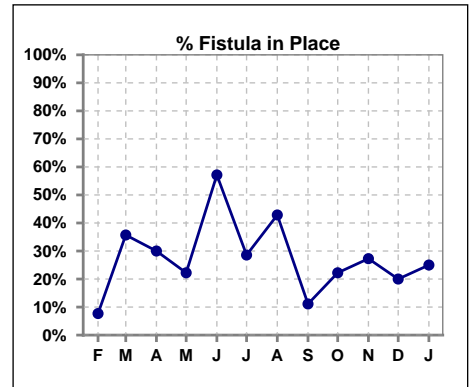
4

**IV. ACCESS**

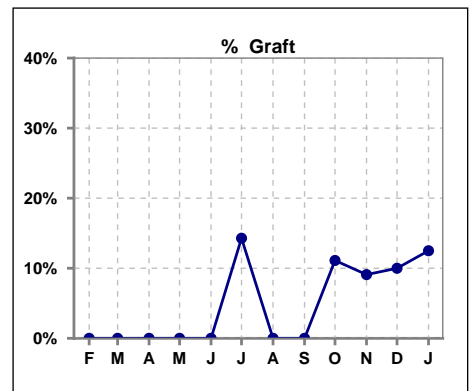
	Feb	Mar	Apr	May	Jun	Jul	Aug	Sep	Oct	Nov	Dec	Jan
# Access	13	14	10	9	7	7	8	9	9	11	10	8
# Fistula	1	1	0	1	0	0	1	1	1	2	1	1
% Fistula	8%	7%	0%	11%	0%	0%	13%	11%	11%	18%	10%	13%



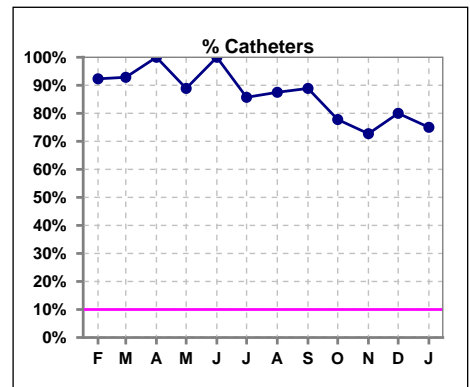
	Feb	Mar	Apr	May	Jun	Jul	Aug	Sep	Oct	Nov	Dec	Jan
# Patient	13	14	10	9	7	7	7	9	9	11	10	8
# Fistula in Place	1	5	3	2	4	2	3	1	2	3	2	2
% Fistula in Place	8%	36%	30%	22%	57%	29%	43%	11%	22%	27%	20%	25%



	Feb	Mar	Apr	May	Jun	Jul	Aug	Sep	Oct	Nov	Dec	Jan
# Access	13	14	10	9	7	7	8	9	9	11	10	8
# Graft	0	0	0	0	0	1	0	0	1	1	1	1
% Graft	0%	0%	0%	0%	0%	14%	0%	0%	11%	9%	10%	13%



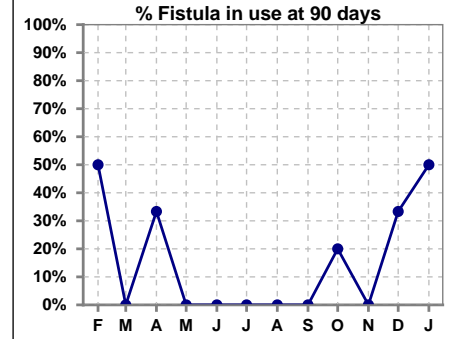
	Feb	Mar	Apr	May	Jun	Jul	Aug	Sep	Oct	Nov	Dec	Jan
# Access	13	14	10	9	7	7	8	9	9	11	10	8
# Catheters	12	13	10	8	7	6	7	8	7	8	8	6
% Catheters	92%	93%	100%	89%	100%	86%	88%	89%	78%	73%	80%	75%



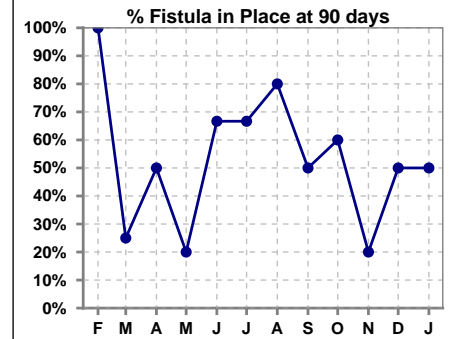
Methodology: a) All labs for 'Adequacy of Dialysis', 'Nutrition', 'Osteodystrophy', 'Anemia' and 'Diabetes' based on last value of month; b) BP's and #L processed are average of all values for month; c) Access data takes last access of month; d) Values for SGA and 'Infection Control' use most recent result.

**IV. ACCESS - CONT. Access at 90 days for those patients that reached 90 days within the month.**

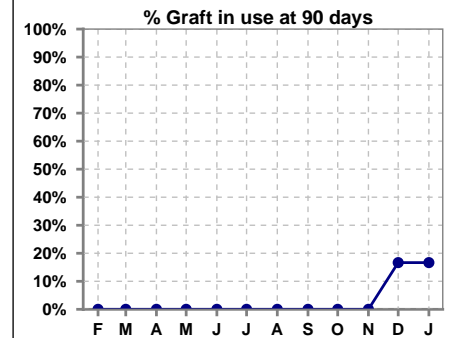
	Feb	Mar	Apr	May	Jun	Jul	Aug	Sep	Oct	Nov	Dec	Jan
# Patient	2	4	6	5	3	3	5	2	5	5	6	6
# Fistula in use	1	0	2	0	0	0	0	0	1	0	2	3
% Fistula in use	50%	0%	33%	0%	0%	0%	0%	0%	20%	0%	33%	50%



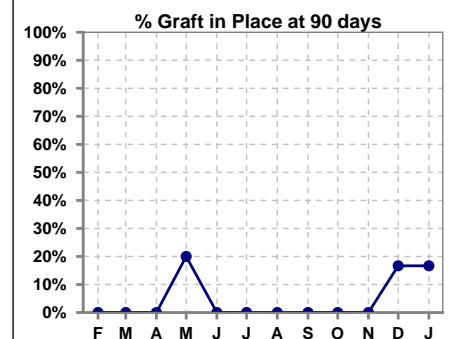
	Feb	Mar	Apr	May	Jun	Jul	Aug	Sep	Oct	Nov	Dec	Jan
# Patient	2	4	6	5	3	3	5	2	5	5	6	6
# Fistula in Place	2	1	3	1	2	2	4	1	3	1	3	3
% Fistula in Place	100%	25%	50%	20%	67%	67%	80%	50%	60%	20%	50%	50%



	Feb	Mar	Apr	May	Jun	Jul	Aug	Sep	Oct	Nov	Dec	Jan
# Patient	2	4	6	5	3	3	5	2	5	5	6	6
# Graft in use	0	0	0	0	0	0	0	0	0	0	1	1
% Graft in use	0%	0%	0%	0%	0%	0%	0%	0%	0%	0%	17%	17%

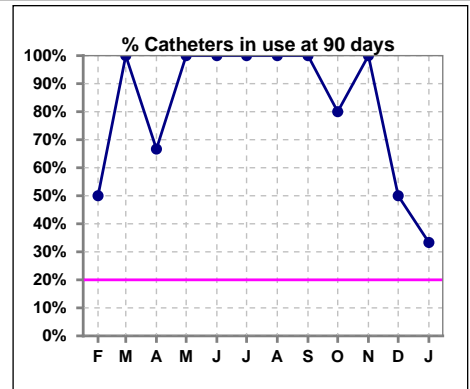


	Feb	Mar	Apr	May	Jun	Jul	Aug	Sep	Oct	Nov	Dec	Jan
# Patient	2	4	6	5	3	3	5	2	5	5	6	6
# Graft in Place	0	0	0	1	0	0	0	0	0	0	1	1
% Graft in Place	0%	0%	0%	20%	0%	0%	0%	0%	0%	0%	17%	17%

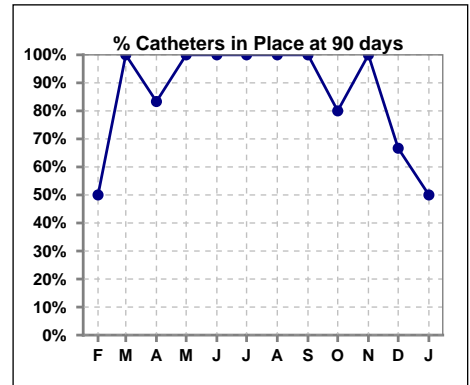


**IV. ACCESS - CONT. Access at 90 days for those patients that reached 90 days within the month.**

	Feb	Mar	Apr	May	Jun	Jul	Aug	Sep	Oct	Nov	Dec	Jan
# Patient	2	4	6	5	3	3	5	2	5	5	6	6
# Catheters in use	1	4	4	5	3	3	5	2	4	5	3	2
% Catheters in use	50%	100%	67%	100%	100%	100%	100%	100%	80%	100%	50%	33%

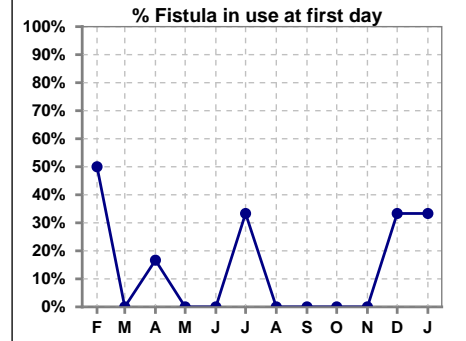


	Feb	Mar	Apr	May	Jun	Jul	Aug	Sep	Oct	Nov	Dec	Jan
# Patient	2	4	6	5	3	3	5	2	5	5	6	6
# Catheters in Place	1	4	5	5	3	3	5	2	4	5	4	3
% Catheters in Place	50%	100%	83%	100%	100%	100%	100%	100%	80%	100%	67%	50%

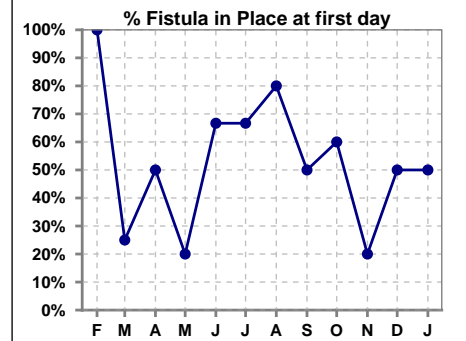


**IV. ACCESS - CONT. Access at first day for those patients that reached 90 days within the month.**

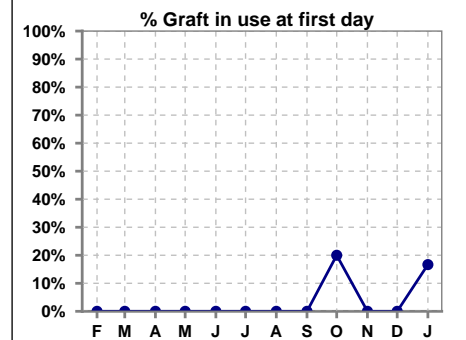
	Feb	Mar	Apr	May	Jun	Jul	Aug	Sep	Oct	Nov	Dec	Jan
# Patient	2	4	6	5	3	3	5	2	5	5	6	6
# Fistula in use	1	0	1	0	0	1	0	0	0	0	2	2
% Fistula in use	50%	0%	17%	0%	0%	33%	0%	0%	0%	0%	33%	33%



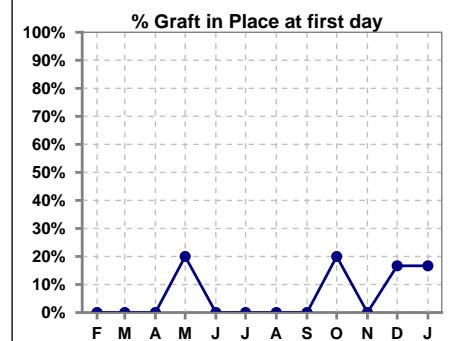
	Feb	Mar	Apr	May	Jun	Jul	Aug	Sep	Oct	Nov	Dec	Jan
# Patient	2	4	6	5	3	3	5	2	5	5	6	6
# Fistula in Place	2	1	3	1	2	2	4	1	3	1	3	3
% Fistula in Place	100%	25%	50%	20%	67%	67%	80%	50%	60%	20%	50%	50%



	Feb	Mar	Apr	May	Jun	Jul	Aug	Sep	Oct	Nov	Dec	Jan
# Patient	2	4	6	5	3	3	5	2	5	5	6	6
# Graft in use	0	0	0	0	0	0	0	0	1	0	0	1
% Graft in use	0%	0%	0%	0%	0%	0%	0%	0%	20%	0%	0%	17%

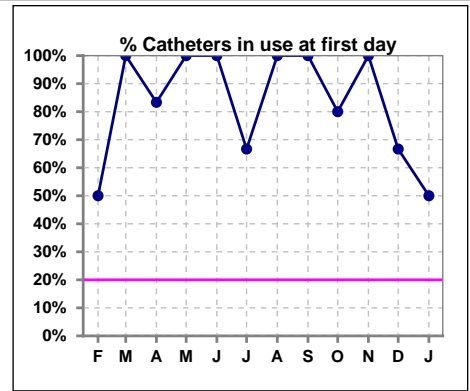


	Feb	Mar	Apr	May	Jun	Jul	Aug	Sep	Oct	Nov	Dec	Jan
# Patient	2	4	6	5	3	3	5	2	5	5	6	6
# Graft in Place	0	0	0	1	0	0	0	0	1	0	1	1
% Graft in Place	0%	0%	0%	20%	0%	0%	0%	0%	20%	0%	17%	17%

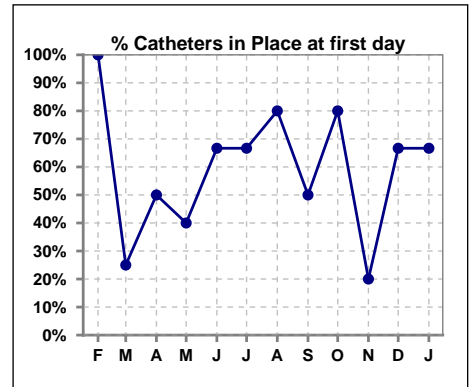


**IV. ACCESS - CONT. Access at first day for those patients that reached 90 days within the month.**

	Feb	Mar	Apr	May	Jun	Jul	Aug	Sep	Oct	Nov	Dec	Jan
# Patient	2	4	6	5	3	3	5	2	5	5	6	6
# Catheters in use	1	4	5	5	3	2	5	2	4	5	4	3
% Catheters in use	50%	100%	83%	100%	100%	67%	100%	100%	80%	100%	67%	50%



	Feb	Mar	Apr	May	Jun	Jul	Aug	Sep	Oct	Nov	Dec	Jan
# Patient	2	4	6	5	3	3	5	2	5	5	6	6
# Catheters in Place	2	1	3	2	2	2	4	1	4	1	4	4
% Catheters in Place	100%	25%	50%	40%	67%	67%	80%	50%	80%	20%	67%	67%





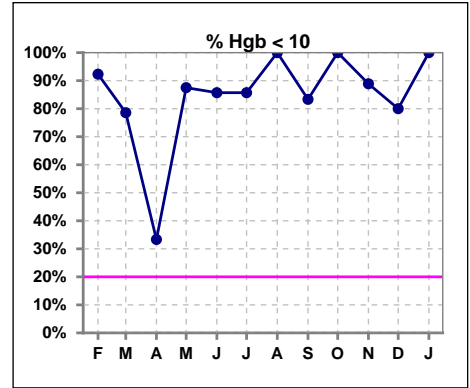
**Yesler Terrace Kidney Center - Center Hemodialysis**  
**Quality Assurance Reports (Patients in first 90 days of treatment)**  
 Through period ending Jan. 31, 2026

9

**V. ANEMIA**

	Feb	Mar	Apr	May	Jun	Jul	Aug	Sep	Oct	Nov	Dec	Jan
# Hgb	13	14	9	8	7	7	8	6	6	9	10	6
# Hgb <= 10	12	11	3	7	6	6	8	5	6	8	8	6
Pop. Mean	8.8	9.2	10.0	8.8	9.0	8.4	8.7	8.8	8.2	8.3	8.6	8.8
Std. Deviation	1.1	0.9	1.6	1.3	1.0	1.7	1.2	1.2	0.6	1.6	1.4	1.0
% Hgb <= 10	92%	79%	33%	88%	86%	86%	100%	83%	100%	89%	80%	100%

Note: Excludes patients who received no ESA in month.



	Feb	Mar	Apr	May	Jun	Jul	Aug	Sep	Oct	Nov	Dec	Jan
# Hgb	13	14	9	8	7	7	8	6	6	9	10	6
# Hgb >= 12	0	0	0	0	0	0	0	0	0	0	0	0
Pop. Mean	8.8	9.2	10.0	8.8	9.0	8.4	8.7	8.8	8.2	8.3	8.6	8.8
Std. Deviation	1.1	0.9	1.6	1.3	1.0	1.7	1.2	1.2	0.6	1.6	1.4	1.0
% Hgb >= 12	0%	0%	0%	0%	0%	0%	0%	0%	0%	0%	0%	0%

Note: Excludes patients who received no ESA in month.

