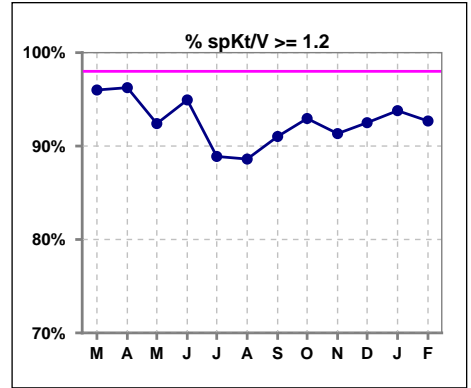
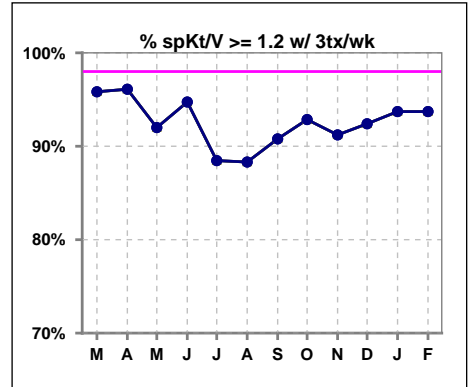


I. ADEQUACY OF DIALYSIS

	Mar	Apr	May	Jun	Jul	Aug	Sep	Oct	Nov	Dec	Jan	Feb
# spKt/V	75	80	79	79	81	79	78	156	150	160	161	164
# spKt/V >= 1.2	72	77	73	75	72	70	71	145	137	148	151	152
Pop. Mean	1.61	1.63	1.52	1.54	1.55	1.50	1.55	1.55	1.55	1.56	1.56	1.55
Std. Deviation	0.31	0.36	0.34	0.33	0.31	0.31	0.30	0.28	0.28	0.29	0.30	0.30
% spKt/V >= 1.2	96%	96%	92%	95%	89%	89%	91%	93%	91%	93%	94%	93%

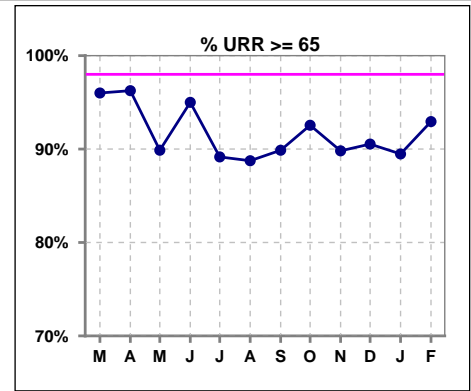


	Mar	Apr	May	Jun	Jul	Aug	Sep	Oct	Nov	Dec	Jan	Feb
# spKt/V w/ 3tx/wk	72	77	75	76	78	77	76	154	148	158	159	159
# spKt/V >= 1.2 w/3tx/wk	69	74	69	72	69	68	69	143	135	146	149	149
Pop. Mean	1.61	1.63	1.51	1.54	1.55	1.50	1.55	1.55	1.55	1.56	1.56	1.56
Std. Deviation	0.31	0.35	0.34	0.33	0.32	0.31	0.31	0.28	0.28	0.29	0.30	0.29
% >= 1.2 w/3tx/wk	96%	96%	92%	95%	88%	88%	91%	93%	91%	92%	94%	94%

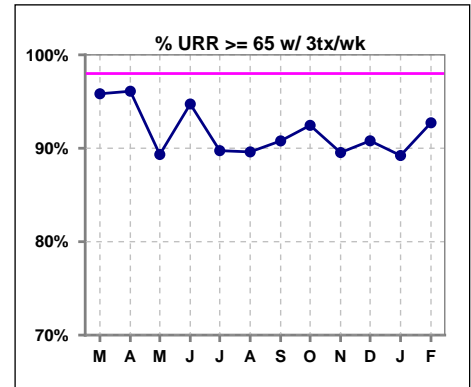


I. ADEQUACY OF DIALYSIS - CONT.

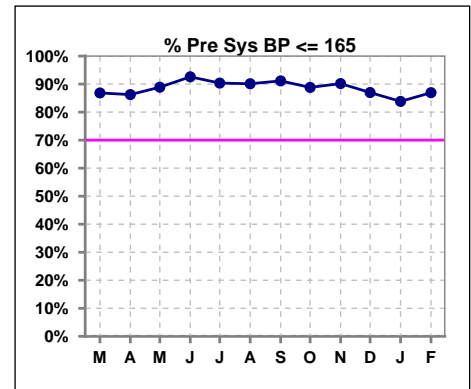
	Mar	Apr	May	Jun	Jul	Aug	Sep	Oct	Nov	Dec	Jan	Feb
# URR	75	80	79	80	83	80	79	161	157	169	171	170
# URR >= 65	72	77	71	76	74	71	71	149	141	153	153	158
Pop. Mean	74	75	72	73	74	72	73	73	74	73	73	74
Std. Deviation	7.09	6.50	8.93	7.02	7.36	8.13	7.70	7.28	6.63	7.75	6.93	6.76
% URR >= 65	96%	96%	90%	95%	89%	89%	90%	93%	90%	91%	89%	93%



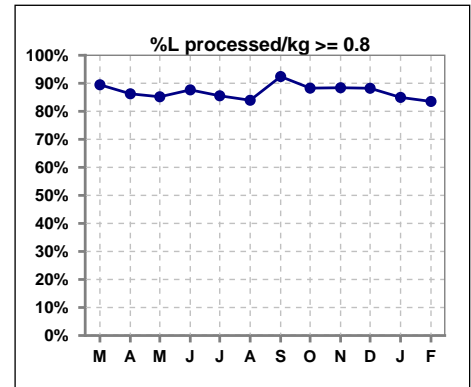
	Mar	Apr	May	Jun	Jul	Aug	Sep	Oct	Nov	Dec	Jan	Feb
# URR w/ 3tx/wk	72	77	75	76	78	77	76	159	153	163	167	165
# URR>=65 w/ 3tx/wk	69	74	67	72	70	69	69	147	137	148	149	153
Pop. Mean	74	74	72	73	74	72	73	73	73	73	73	74
Std. Deviation	7.13	6.41	9.01	7.02	7.41	8.16	7.66	7.28	6.64	7.67	7.00	6.85
% URR>=65 w/ 3tx/wk	96%	96%	89%	95%	90%	90%	91%	92%	90%	91%	89%	93%



	Mar	Apr	May	Jun	Jul	Aug	Sep	Oct	Nov	Dec	Jan	Feb
# Pre Sys BP	76	80	81	81	83	81	79	161	163	169	173	176
# Pre Sys BP <= 165	67	71	72	76	75	75	72	146	148	148	148	154
Pop. Mean	145	144	140	142	137	141	141	143	142	143	145	144
Std. Deviation	17.6	19.4	19.9	18.1	19.8	18.7	18.7	19.5	19.6	20.7	20.1	18.6
% Pre Sys BP <=165	87%	86%	89%	93%	90%	90%	91%	89%	90%	87%	84%	87%



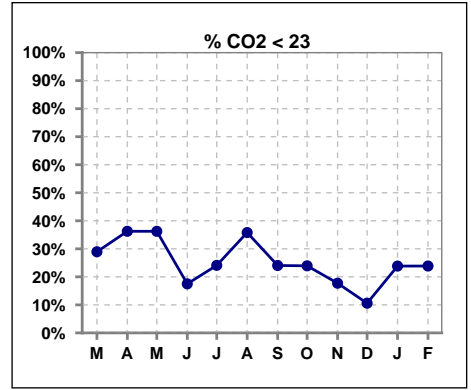
	Mar	Apr	May	Jun	Jul	Aug	Sep	Oct	Nov	Dec	Jan	Feb
# L processed/kg	76	80	81	81	83	81	79	162	164	170	173	176
# L processed/kg>=0.8	68	69	69	71	71	68	73	143	145	150	147	147
Pop. Mean	1	1	1	1	1	1	1	1	1	1	1	1
Std. Deviation	0.3	0.3	0.3	0.3	0.3	0.3	0.2	0.3	0.3	0.3	0.3	0.3
% L processed/kg>=0.8	89%	86%	85%	88%	86%	84%	92%	88%	88%	88%	85%	84%



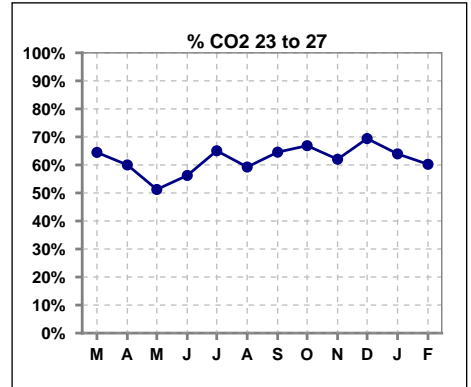
Methodology: a) All labs for 'Adequacy of Dialysis', 'Nutrition', 'Osteodystrophy', 'Anemia' and 'Diabetes' based on last value of month; b) BP's and #L processed are average of all values for month; c) Access data takes last access of month; d) Values for SGA and 'Infection Control' use most recent result.

I. ADEQUACY OF DIALYSIS - CONT.

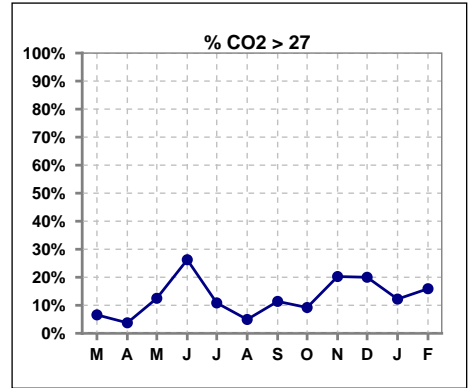
	Mar	Apr	May	Jun	Jul	Aug	Sep	Oct	Nov	Dec	Jan	Feb
# CO2	76	80	80	80	83	81	79	163	158	170	172	176
# CO2 < 23	22	29	29	14	20	29	19	39	28	18	41	42
Pop. Mean	24	23	24	25	24	23	24	24	25	25	24	24
Std. Deviation	2.75	3.02	3.63	3.01	3.47	3.45	2.84	3.01	2.91	2.64	3.04	3.20
% CO2 < 23	29%	36%	36%	18%	24%	36%	24%	24%	18%	11%	24%	24%



	Mar	Apr	May	Jun	Jul	Aug	Sep	Oct	Nov	Dec	Jan	Feb
# CO2	76	80	80	80	83	81	79	163	158	170	172	176
# CO2 23 to 27	49	48	41	45	54	48	51	109	98	118	110	106
Pop. Mean	24	23	24	25	24	23	24	24	25	25	24	24
Std. Deviation	2.75	3.02	3.63	3.01	3.47	3.45	2.84	3.01	2.91	2.64	3.04	3.20
% CO2 23 to 27	64%	60%	51%	56%	65%	59%	65%	67%	62%	69%	64%	60%



	Mar	Apr	May	Jun	Jul	Aug	Sep	Oct	Nov	Dec	Jan	Feb
# CO2	76	80	80	80	83	81	79	163	158	170	172	176
# CO2 > 27	5	3	10	21	9	4	9	15	32	34	21	28
Pop. Mean	24	23	24	25	24	23	24	24	25	25	24	24
Std. Deviation	2.75	3.02	3.63	3.01	3.47	3.45	2.84	3.01	2.91	2.64	3.04	3.20
% CO2 > 27	7%	4%	13%	26%	11%	5%	11%	9%	20%	20%	12%	16%

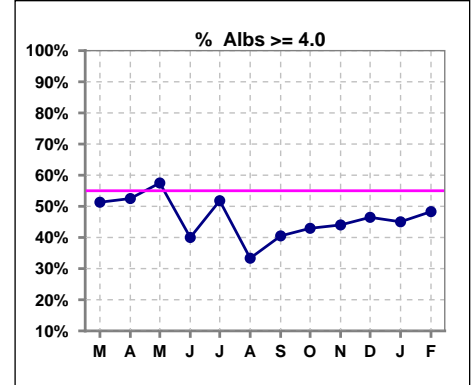


Methodology: a) All labs for 'Adequacy of Dialysis', 'Nutrition', 'Osteodystrophy', 'Anemia' and 'Diabetes' based on last value of month; b) BP's and #L processed are average of all values for month; c) Access data takes last access of month; d) Values for SGA and 'Infection Control' use most recent result.

*Albumin values use BCG method - as of July 2001

II. NUTRITION

	Mar	Apr	May	Jun	Jul	Aug	Sep	Oct	Nov	Dec	Jan	Feb
# Albumin	76	80	80	80	83	81	79	163	159	170	171	176
# Albumin >= 4.0	39	42	46	32	43	27	32	70	70	79	77	85
Pop. Mean	4.0	3.9	4.0	3.8	3.8	3.7	3.8	3.8	3.9	3.9	3.8	3.8
Std. Deviation	0.36	0.34	0.39	0.44	0.55	0.48	0.41	0.42	0.40	0.45	0.46	0.48
% Alb >= 4.0	51%	53%	58%	40%	52%	33%	41%	43%	44%	46%	45%	48%

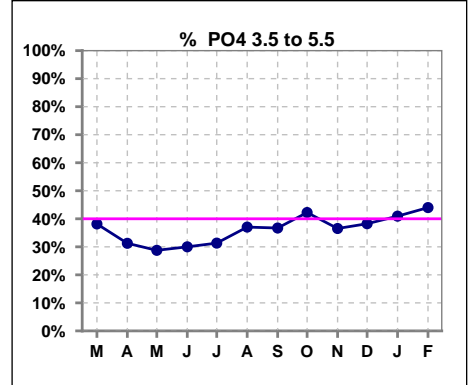


Methodology: a) All labs for 'Adequacy of Dialysis', 'Nutrition', 'Osteodystrophy', 'Anemia' and 'Diabetes' based on last value of month; b) BP's and #L processed are average of all values for month; c) Access data takes last access of month; d) Values for SGA and 'Infection Control' use most recent result.

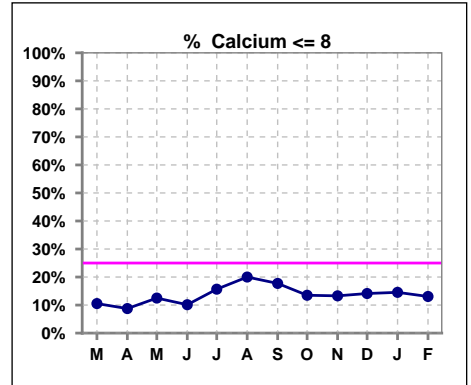
Lab methodology for PTH changed January 2012

III. OSTEODYSTROPHY

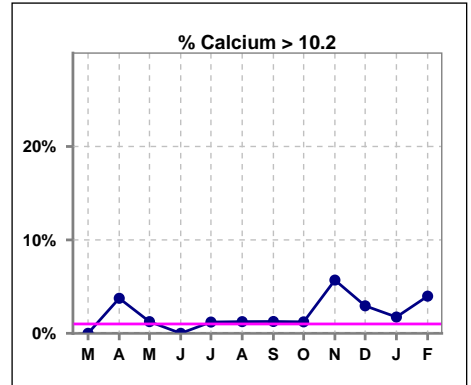
	Mar	Apr	May	Jun	Jul	Aug	Sep	Oct	Nov	Dec	Jan	Feb
# PO4	76	80	80	80	83	81	79	161	156	170	171	175
# PO4 3.5 to 5.5	29	25	23	24	26	30	29	68	57	65	70	77
Pop. Mean	6.1	6.5	6.5	6.4	6.5	6.5	6.4	6.0	6.1	6.1	6.1	6.0
Std. Deviation	1.81	2.24	2.12	1.96	2.03	2.21	2.08	2.19	2.05	2.05	1.94	2.03
% PO4 3.5 to 5.5	38%	31%	29%	30%	31%	37%	37%	42%	37%	38%	41%	44%



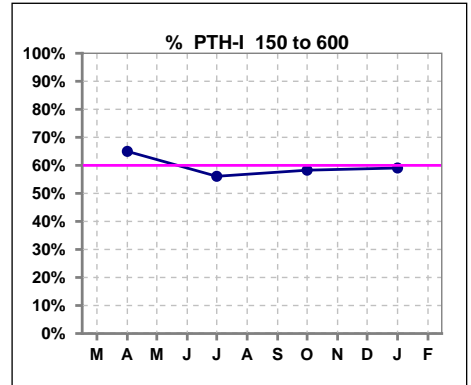
	Mar	Apr	May	Jun	Jul	Aug	Sep	Oct	Nov	Dec	Jan	Feb
# Calcium	76	80	80	79	83	80	79	163	158	170	172	176
# Calcium <= 8	8	7	10	8	13	16	14	22	21	24	25	23
Pop. Mean	9.0	9.0	9.0	8.9	8.8	8.7	8.7	8.8	9.0	8.8	8.8	8.9
Std. Deviation	0.71	0.73	0.89	0.70	0.85	0.67	0.73	0.73	0.82	0.74	0.79	0.78
% Calcium <= 8	11%	9%	13%	10%	16%	20%	18%	13%	13%	14%	15%	13%



	Mar	Apr	May	Jun	Jul	Aug	Sep	Oct	Nov	Dec	Jan	Feb
# Calcium	76	80	80	79	83	80	79	163	158	170	172	176
# Calcium > 10.2	0	3	1	0	1	1	1	2	9	5	3	7
Pop. Mean	9.0	9.0	9.0	8.9	8.8	8.7	8.7	8.8	9.0	8.8	8.8	8.9
Std. Deviation	0.71	0.73	0.89	0.70	0.85	0.67	0.73	0.73	0.82	0.74	0.79	0.78
% Calcium > 10.2	0%	4%	1%	0%	1%	1%	1%	1%	6%	3%	2%	4%



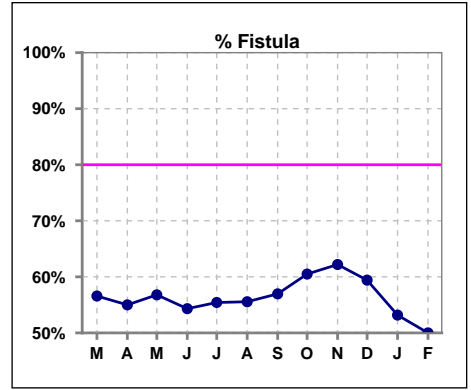
	Mar	Apr	May	Jun	Jul	Aug	Sep	Oct	Nov	Dec	Jan	Feb
# PTH-I		80			82			163			171	
# PTH-I 150 to 600		52			46			95			101	
Pop. Mean		541			608			525			559	
Std. Deviation		531			682			423			507	
% PTH-I 150 to 600		65%			56%			58%			59%	



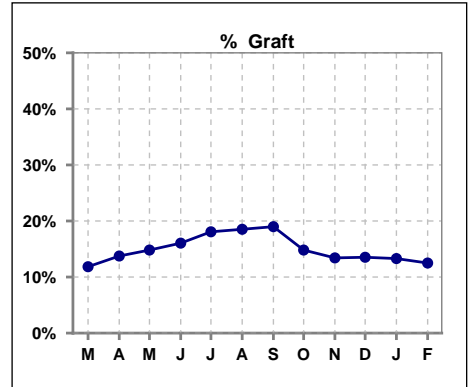
Methodology: a) All labs for 'Adequacy of Dialysis', 'Nutrition', 'Osteodystrophy', 'Anemia' and 'Diabetes' based on last value of month; b) BP's and #L processed are average of all values for month; c) Access data takes last access of month; d) Values for SGA and 'Infection Control' use most recent result.

IV. ACCESS

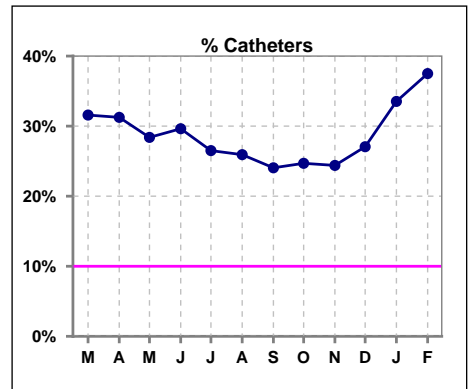
	Mar	Apr	May	Jun	Jul	Aug	Sep	Oct	Nov	Dec	Jan	Feb
# Access	76	80	81	81	83	81	79	162	164	170	173	176
# Fistula	43	44	46	44	46	45	45	98	102	101	92	88
% Fistula	57%	55%	57%	54%	55%	56%	57%	60%	62%	59%	53%	50%



	Mar	Apr	May	Jun	Jul	Aug	Sep	Oct	Nov	Dec	Jan	Feb
# Access	76	80	81	81	83	81	79	162	164	170	173	176
# Graft	9	11	12	13	15	15	15	24	22	23	23	22
% Graft	12%	14%	15%	16%	18%	19%	19%	15%	13%	14%	13%	13%



	Mar	Apr	May	Jun	Jul	Aug	Sep	Oct	Nov	Dec	Jan	Feb
# Access	76	80	81	81	83	81	79	162	164	170	173	176
# Catheters	24	25	23	24	22	21	19	40	40	46	58	66
% Catheters	32%	31%	28%	30%	27%	26%	24%	25%	24%	27%	34%	38%



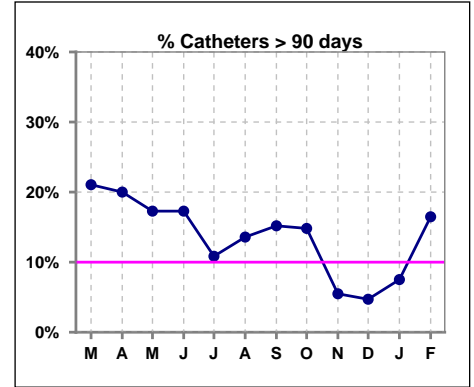
Methodology: a) All labs for 'Adequacy of Dialysis', 'Nutrition', 'Osteodystrophy', 'Anemia' and 'Diabetes' based on last value of month; b) BP's and #L processed are average of all values for month; c) Access data takes last access of month; d) Values for SGA and 'Infection Control' use most recent result.

IV. ACCESS - CONT.

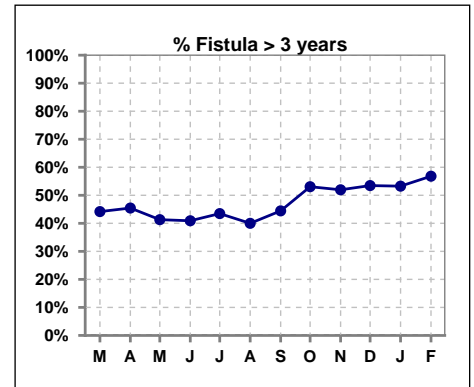
Catheters > 90 days

	Mar	Apr	May	Jun	Jul	Aug	Sep	Oct	Nov	Dec	Jan	Feb
# Access	76	80	81	81	83	81	79	162	164	170	173	176
# Catheters	16	16	14	14	9	11	12	24	9	8	13	29
% Catheters	21%	20%	17%	17%	11%	14%	15%	15%	5%	5%	8%	16%

Definition: Catheter in use on last treatment of the month



	Mar	Apr	May	Jun	Jul	Aug	Sep	Oct	Nov	Dec	Jan	Feb
# Fistula	43	44	46	44	46	45	45	98	102	101	92	88
# Fistula > 3 yrs	19	20	19	18	20	18	20	52	53	54	49	50
% Fistula > 3 yrs	44%	45%	41%	41%	43%	40%	44%	53%	52%	53%	53%	57%

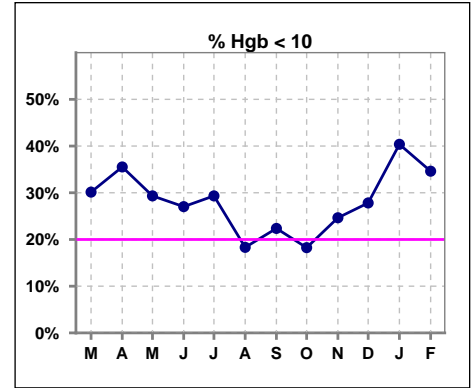


Methodology: a) All labs for 'Adequacy of Dialysis', 'Nutrition', 'Osteodystrophy', 'Anemia' and 'Diabetes' based on last value of month; b) BP's and #L processed are average of all values for month; c) Access data takes last access of month; d) Values for SGA and 'Infection Control' use most recent result.

V. ANEMIA

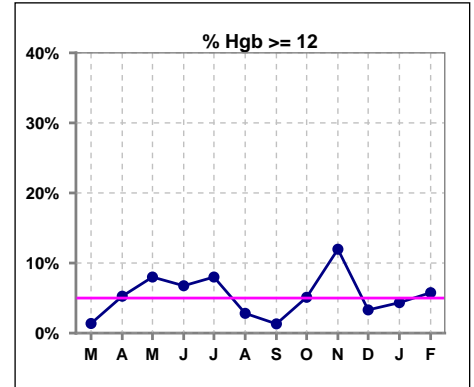
	Mar	Apr	May	Jun	Jul	Aug	Sep	Oct	Nov	Dec	Jan	Feb
# Hgb	73	76	75	74	75	71	76	137	142	151	161	156
# Hgb < 10	22	27	22	20	22	13	17	25	35	42	65	54
Pop. Mean	10.3	10.4	10.6	10.6	10.6	10.6	10.4	10.7	10.7	10.5	10.1	10.4
Std. Deviation	1.1	1.3	1.3	1.3	1.5	1.2	1.3	1.1	1.3	1.1	1.4	1.4
% Hgb < 10	30%	36%	29%	27%	29%	18%	22%	18%	25%	28%	40%	35%

Note: Excludes patients who received no ESA in month.



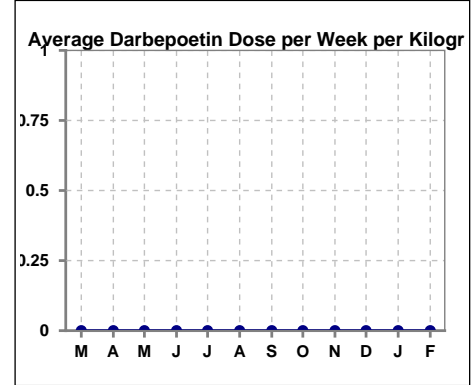
	Mar	Apr	May	Jun	Jul	Aug	Sep	Oct	Nov	Dec	Jan	Feb
# Hgb	73	76	75	74	75	71	76	137	142	151	161	156
# Hgb >= 12	1	4	6	5	6	2	1	7	17	5	7	9
Pop. Mean	10.3	10.4	10.6	10.6	10.6	10.6	10.4	10.7	10.7	10.5	10.1	10.4
Std. Deviation	1.1	1.3	1.3	1.3	1.5	1.2	1.3	1.1	1.3	1.1	1.4	1.4
% Hgb >= 12	1%	5%	8%	7%	8%	3%	1%	5%	12%	3%	4%	6%

Note: Excludes patients who received no ESA in month.



Average Darbepoetin Dose per Week per Kilogram

	Mar	Apr	May	Jun	Jul	Aug	Sep	Oct	Nov	Dec	Jan	Feb
# Average Darbepoetin	0	0	0	0	0	0	0	0	0	0	0	0

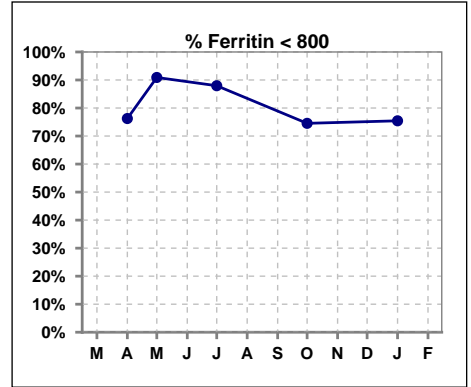


Methodology: a) All labs for 'Adequacy of Dialysis', 'Nutrition', 'Osteodystrophy', 'Anemia' and 'Diabetes' based on last value of month; b) BP's and #L processed are average of all values for month; c) Access data takes last access of month; d) Values for SGA and 'Infection Control' use most recent result.

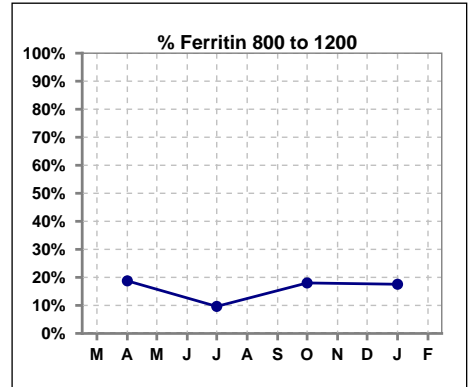
V. ANEMIA - CONT.

Iron Profile

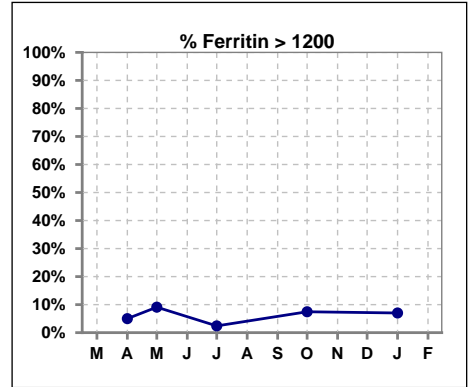
	Mar	Apr	May	Jun	Jul	Aug	Sep	Oct	Nov	Dec	Jan	Feb
# Ferritin		80	11		83			161			171	
# Ferritin < 800		61	10		73			120			129	
Pop. Mean		531	470		455			564			546	
Std. Deviation		384	394		320			376			377	
% Ferritin < 800		76%	91%		88%			75%			75%	



	Mar	Apr	May	Jun	Jul	Aug	Sep	Oct	Nov	Dec	Jan	Feb
# Ferritin		80	11		83			161			171	
# Ferritin 800 to 1200		15			8			29			30	
Pop. Mean		531	470		455			564			546	
Std. Deviation		384	394		320			376			377	
% Ferritin 800 to 1200		19%			10%			18%			18%	

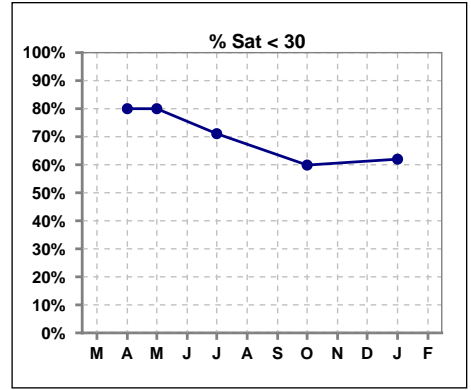


	Mar	Apr	May	Jun	Jul	Aug	Sep	Oct	Nov	Dec	Jan	Feb
# Ferritin		80	11		83			161			171	
# Ferritin > 1200		4	1		2			12			12	
Pop. Mean		531	470		455			564			546	
Std. Deviation		384	394		320			376			377	
% Ferritin > 1200		5%	9%		2%			7%			7%	

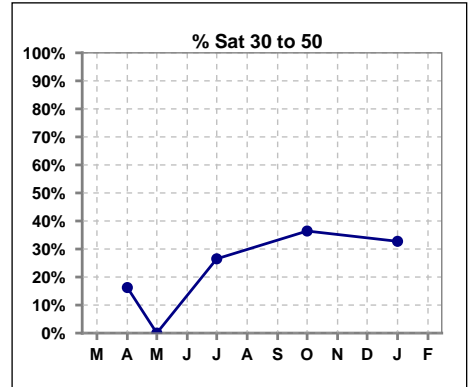


V. ANEMIA - CONT.

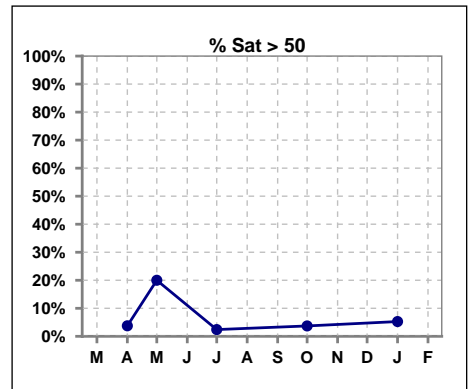
	Mar	Apr	May	Jun	Jul	Aug	Sep	Oct	Nov	Dec	Jan	Feb
# % Sat		80	10		83			162			171	
# % Sat < 30		64	8		59			97			106	
Pop. Mean		24	27		24			28			27	
Std. Deviation		14	24		10			13			14	
% % Sat < 30		80%	80%		71%			60%			62%	



	Mar	Apr	May	Jun	Jul	Aug	Sep	Oct	Nov	Dec	Jan	Feb
# % Sat		80	10		83			162			171	
# % Sat 30 to 50		13	0		22			59			56	
Pop. Mean		24	27		24			28			27	
Std. Deviation		14	24		10			13			14	
% % Sat 30 to 50		16%	0%		27%			36%			33%	



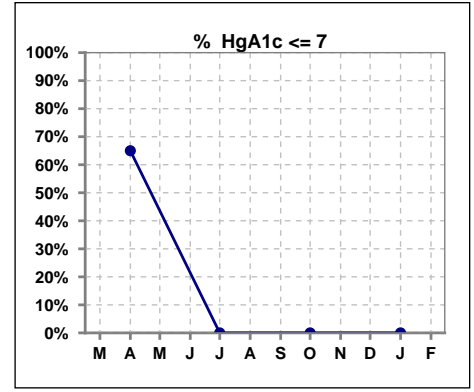
	Mar	Apr	May	Jun	Jul	Aug	Sep	Oct	Nov	Dec	Jan	Feb
# % Sat		80	10		83			162			171	
# % Sat > 50		3	2		2			6			9	
Pop. Mean		24	27		24			28			27	
Std. Deviation		14	24		10			13			14	
% % Sat > 50		4%	20%		2%			4%			5%	



Methodology: a) All labs for 'Adequacy of Dialysis', 'Nutrition', 'Osteodystrophy', 'Anemia' and 'Diabetes' based on last value of month; b) BP's and #L processed are average of all values for month; c) Access data takes last access of month; d) Values for SGA and 'Infection Control' use most recent result.

VI. Diabetes

	Mar	Apr	May	Jun	Jul	Aug	Sep	Oct	Nov	Dec	Jan	Feb
# HgA1c		40			0			0			0	
# HgA1c <= 7		26			0			0			0	
Pop. Mean		6.8			0			0			0	
Std. Deviation		1.98			0			0			0	
% HgA1c <= 7		65%			0%			0%			0%	

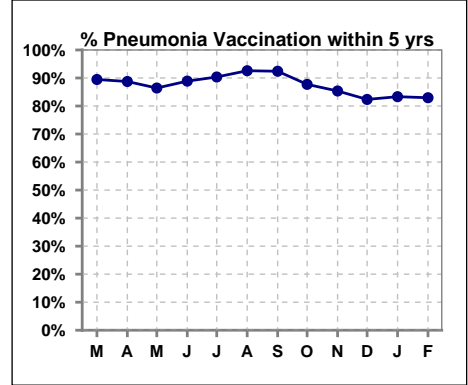


Methodology: a) All labs for 'Adequacy of Dialysis', 'Nutrition', 'Osteodystrophy', 'Anemia' and 'Diabetes' based on last value of month; b) BP's and #L processed are average of all values for month; c) Access data takes last access of month; d) Values for SGA and 'Infection Control' use most recent result.

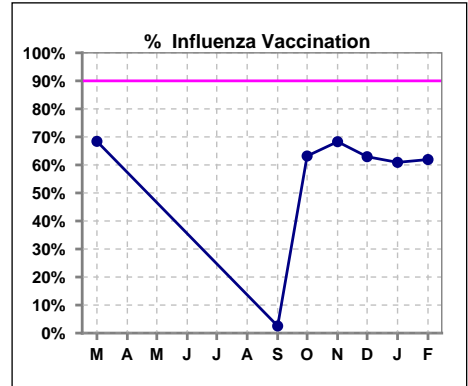
VII. Infection Control

Pneumonia vaccination within the past five years

	Mar	Apr	May	Jun	Jul	Aug	Sep	Oct	Nov	Dec	Jan	Feb
# Patient	76	80	81	81	83	81	79	163	164	170	174	176
# Pneumonia	68	71	70	72	75	75	73	143	140	140	145	146
% Pneumonia	89%	89%	86%	89%	90%	93%	92%	88%	85%	82%	83%	83%



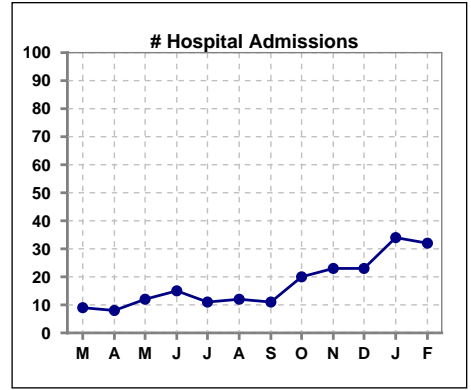
	Mar	Apr	May	Jun	Jul	Aug	Sep	Oct	Nov	Dec	Jan	Feb
# Patient	76						79	163	164	170	174	176
# Influenza	52						2	103	112	107	106	109
% Influenza	68%						3%	63%	68%	63%	61%	62%



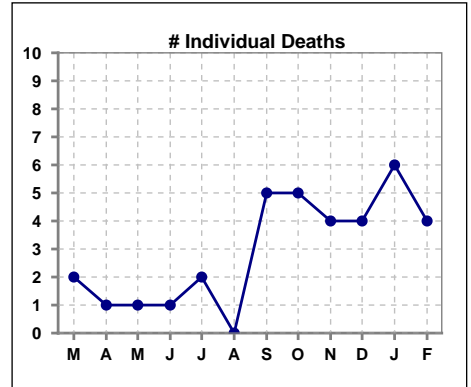
Methodology: a) All labs for 'Adequacy of Dialysis', 'Nutrition', 'Osteodystrophy', 'Anemia' and 'Diabetes' based on last value of month; b) BP's and #L processed are average of all values for month; c) Access data takes last access of month; d) Values for SGA and 'Infection Control' use most recent result.

VIII. Outcome measures

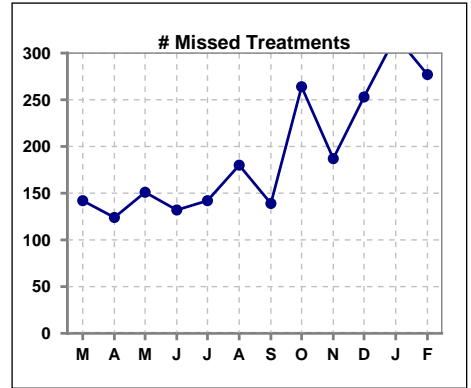
	Mar	Apr	May	Jun	Jul	Aug	Sep	Oct	Nov	Dec	Jan	Feb
# Patient	76	80	81	81	83	81	79	163	164	170	174	176
# Hospital Admissions	9	8	12	15	11	12	11	20	23	23	34	32



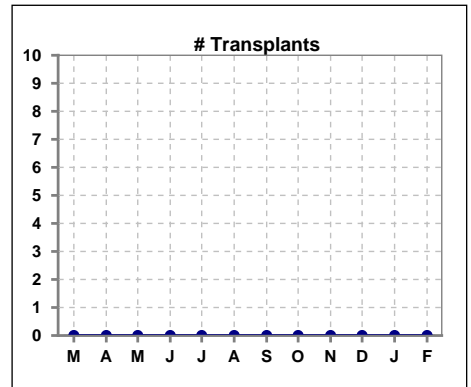
	Mar	Apr	May	Jun	Jul	Aug	Sep	Oct	Nov	Dec	Jan	Feb
# Patient	76	80	81	81	83	81	79	163	164	170	174	176
# Individual Deaths	2	1	1	1	2	0	5	5	4	4	6	4



	Mar	Apr	May	Jun	Jul	Aug	Sep	Oct	Nov	Dec	Jan	Feb
# Patient	76	80	81	81	83	81	79	163	164	170	174	176
# Missed Treatments	142	124	151	132	142	180	139	264	187	253	318	277



	Mar	Apr	May	Jun	Jul	Aug	Sep	Oct	Nov	Dec	Jan	Feb
# Patient	76	80	81	81	83	81	79	163	164	170	174	176
# Transplants	0	0	0	0	0	0	0	0	0	0	0	0



Methodology: a) All labs for 'Adequacy of Dialysis', 'Nutrition', 'Osteodystrophy', 'Anemia' and 'Diabetes' based on last value of month; b) BP's and #L processed are average of all values for month; c) Access data takes last access of month; d) Values for SGA and 'Infection Control' use most recent result.