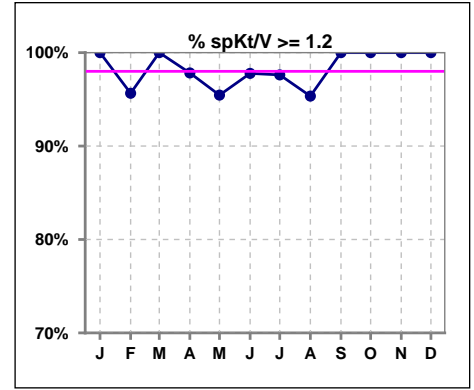
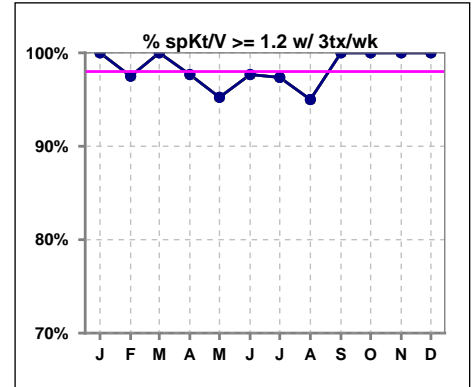


**I. ADEQUACY OF DIALYSIS**

	Jan	Feb	Mar	Apr	May	Jun	Jul	Aug	Sep	Oct	Nov	Dec
# spKt/V	44	46	48	46	44	45	42	43	43	46	48	52
# spKt/V >= 1.2	44	44	48	45	42	44	41	41	43	46	48	52
Pop. Mean	1.71	1.59	1.60	1.58	1.49	1.52	1.56	1.50	1.53	1.55	1.56	1.47
Std. Deviation	0.44	0.38	0.33	0.33	0.35	0.34	0.38	0.28	0.29	0.29	0.28	0.24
% spKt/V >= 1.2	100%	96%	100%	98%	95%	98%	98%	95%	100%	100%	100%	100%



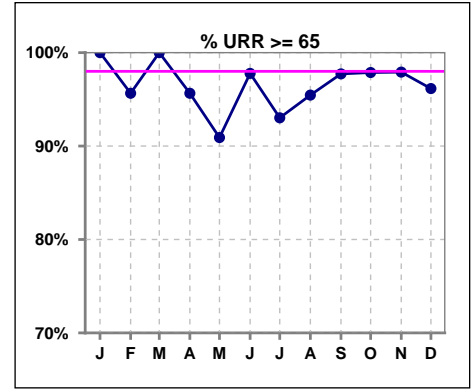
	Jan	Feb	Mar	Apr	May	Jun	Jul	Aug	Sep	Oct	Nov	Dec
# spKt/V w/ 3tx/wk	40	40	43	43	42	43	38	40	40	46	48	52
# spKt/V >= 1.2 w/3tx/wk	40	39	43	42	40	42	37	38	40	46	48	52
Pop. Mean	1.74	1.62	1.62	1.59	1.50	1.53	1.58	1.51	1.54	1.55	1.56	1.47
Std. Deviation	0.45	0.35	0.34	0.34	0.35	0.34	0.40	0.29	0.30	0.29	0.28	0.24
% >= 1.2 w/3tx/wk	100%	98%	100%	98%	95%	98%	97%	95%	100%	100%	100%	100%



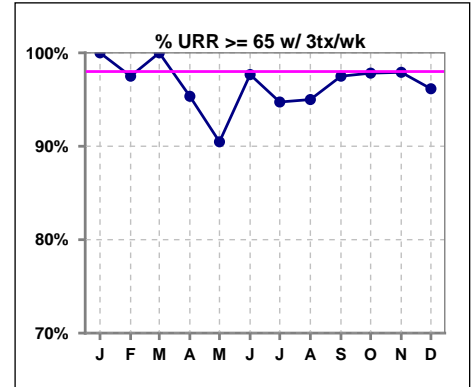
Methodology: a) All labs for 'Adequacy of Dialysis', 'Nutrition', 'Osteodystrophy', 'Anemia' and 'Diabetes' based on last value of month; b) BP's and #L processed are average of all values for month; c) Access data takes last access of month; d) Values for SGA and 'Infection Control' use most recent result.

**I. ADEQUACY OF DIALYSIS - CONT.**

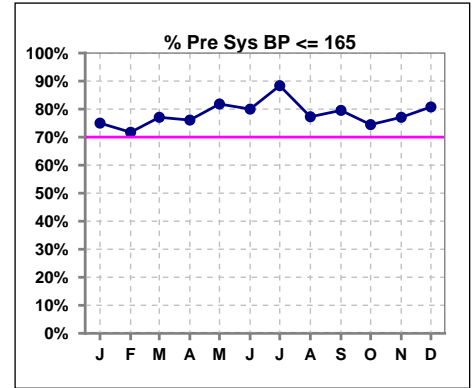
	Jan	Feb	Mar	Apr	May	Jun	Jul	Aug	Sep	Oct	Nov	Dec
# URR	44	46	48	46	44	45	43	44	44	47	48	52
# URR >= 65	44	44	48	44	40	44	40	42	43	46	47	50
Pop. Mean	76	74	74	74	71	72	73	72	73	74	74	72
Std. Deviation	7.05	8.58	6.09	6.32	7.68	7.55	7.23	5.75	6.01	5.85	5.34	5.06
% URR >= 65	100%	96%	100%	96%	91%	98%	93%	95%	98%	98%	98%	96%



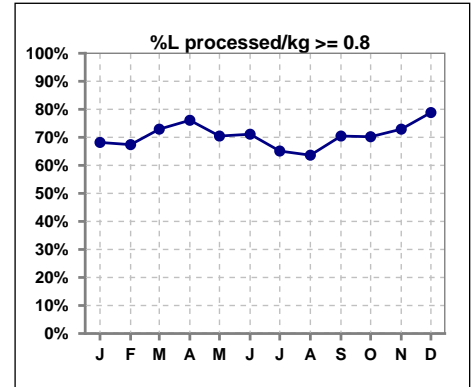
	Jan	Feb	Mar	Apr	May	Jun	Jul	Aug	Sep	Oct	Nov	Dec
# URR w/ 3tx/wk	40	40	43	43	42	43	38	40	40	46	48	52
# URR>=65 w/ 3tx/wk	40	39	43	41	38	42	36	38	39	45	47	50
Pop. Mean	76	75	74	74	72	73	74	73	73	74	74	72
Std. Deviation	7.17	6.42	6.16	6.43	7.82	7.65	7.35	5.95	6.06	5.69	5.34	5.06
% URR>=65 w/ 3tx/wk	100%	98%	100%	95%	90%	98%	95%	95%	98%	98%	98%	96%



	Jan	Feb	Mar	Apr	May	Jun	Jul	Aug	Sep	Oct	Nov	Dec
# Pre Sys BP	44	46	48	46	44	45	43	44	44	47	48	52
# Pre Sys BP <= 165	33	34	37	36	36	39	38	37	35	36	37	42
Pop. Mean	150	148	149	149	147	144	143	146	147	149	150	150
Std. Deviation	22.7	21.6	21.5	20.9	18.2	19.4	19.4	21.3	22.4	22.2	20.1	19.5
% Pre Sys BP <=165	75%	72%	77%	76%	82%	80%	88%	77%	80%	74%	77%	81%



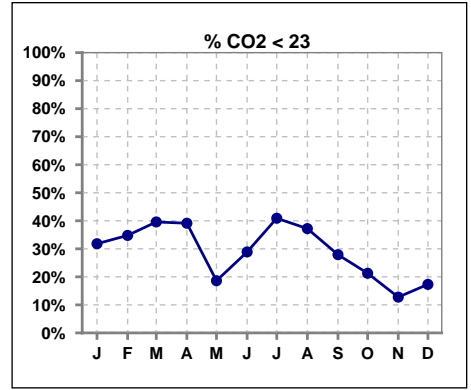
	Jan	Feb	Mar	Apr	May	Jun	Jul	Aug	Sep	Oct	Nov	Dec
# L processed/kg	44	46	48	46	44	45	43	44	44	47	48	52
# L processed/kg>=0.8	30	31	35	35	31	32	28	28	31	33	35	41
Pop. Mean	1	1	1	1	1	1	1	1	1	1	1	1
Std. Deviation	0.3	0.3	0.3	0.3	0.4	0.3	0.3	0.4	0.3	0.4	0.4	0.3
% L processed/kg>=0.8	68%	67%	73%	76%	70%	71%	65%	64%	70%	70%	73%	79%



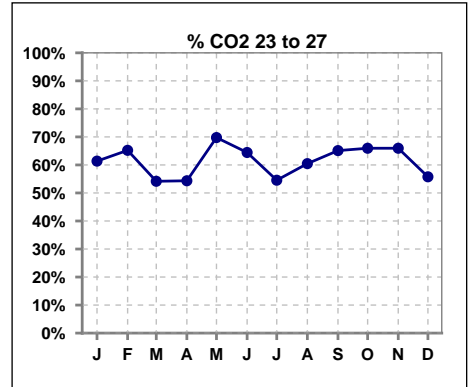
Methodology: a) All labs for 'Adequacy of Dialysis', 'Nutrition', 'Osteodystrophy', 'Anemia' and 'Diabetes' based on last value of month; b) BP's and #L processed are average of all values for month; c) Access data takes last access of month; d) Values for SGA and 'Infection Control' use most recent result.

**I. ADEQUACY OF DIALYSIS - CONT.**

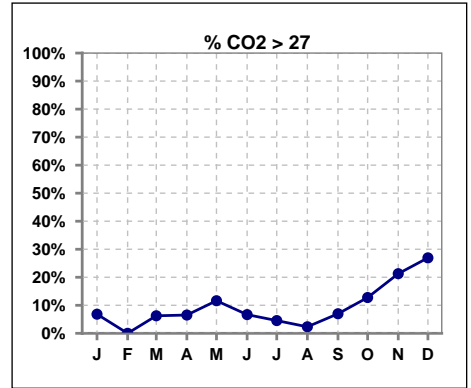
	Jan	Feb	Mar	Apr	May	Jun	Jul	Aug	Sep	Oct	Nov	Dec
# CO2	44	46	48	46	43	45	44	43	43	47	47	52
# CO2 < 23	14	16	19	18	8	13	18	16	12	10	6	9
Pop. Mean	24	23	24	23	25	24	23	23	24	24	25	25
Std. Deviation	3.02	3.20	3.11	2.93	2.81	3.52	2.88	2.32	3.10	4.10	3.00	3.38
% CO2 < 23	32%	35%	40%	39%	19%	29%	41%	37%	28%	21%	13%	17%



	Jan	Feb	Mar	Apr	May	Jun	Jul	Aug	Sep	Oct	Nov	Dec
# CO2	44	46	48	46	43	45	44	43	43	47	47	52
# CO2 23 to 27	27	30	26	25	30	29	24	26	28	31	31	29
Pop. Mean	24	23	24	23	25	24	23	23	24	24	25	25
Std. Deviation	3.02	3.20	3.11	2.93	2.81	3.52	2.88	2.32	3.10	4.10	3.00	3.38
% CO2 23 to 27	61%	65%	54%	54%	70%	64%	55%	60%	65%	66%	66%	56%



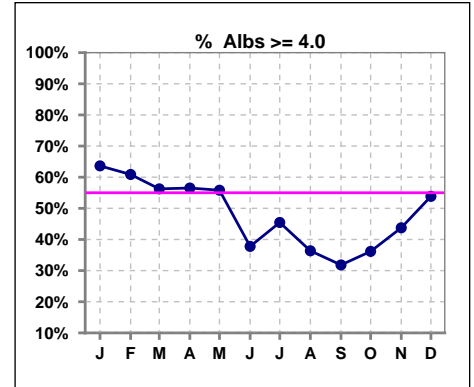
	Jan	Feb	Mar	Apr	May	Jun	Jul	Aug	Sep	Oct	Nov	Dec
# CO2	44	46	48	46	43	45	44	43	43	47	47	52
# CO2 > 27	3	0	3	3	5	3	2	1	3	6	10	14
Pop. Mean	24	23	24	23	25	24	23	23	24	24	25	25
Std. Deviation	3.02	3.20	3.11	2.93	2.81	3.52	2.88	2.32	3.10	4.10	3.00	3.38
% CO2 > 27	7%	0%	6%	7%	12%	7%	5%	2%	7%	13%	21%	27%



\*Albumin values use BCG method - as of July 2001

**II. NUTRITION**

	Jan	Feb	Mar	Apr	May	Jun	Jul	Aug	Sep	Oct	Nov	Dec
# Albumin	44	46	48	46	43	45	44	44	44	47	48	52
# Albumin >= 4.0	28	28	27	26	24	17	20	16	14	17	21	28
Pop. Mean	4.0	4.0	4.0	4.0	4.0	3.8	3.8	3.8	3.8	3.8	3.8	3.9
Std. Deviation	0.36	0.39	0.35	0.32	0.42	0.44	0.43	0.34	0.34	0.30	0.35	0.32
% Alb >= 4.0	64%	61%	56%	57%	56%	38%	45%	36%	32%	36%	44%	54%

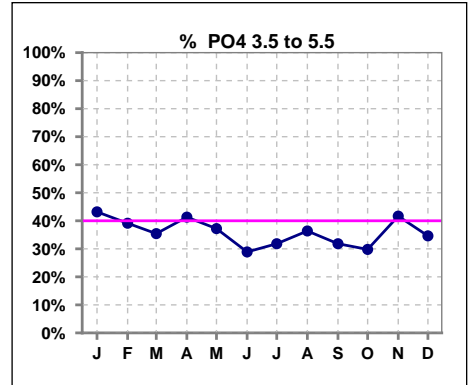


Methodology: a) All labs for 'Adequacy of Dialysis', 'Nutrition', 'Osteodystrophy', 'Anemia' and 'Diabetes' based on last value of month; b) BP's and #L processed are average of all values for month; c) Access data takes last access of month; d) Values for SGA and 'Infection Control' use most recent result.

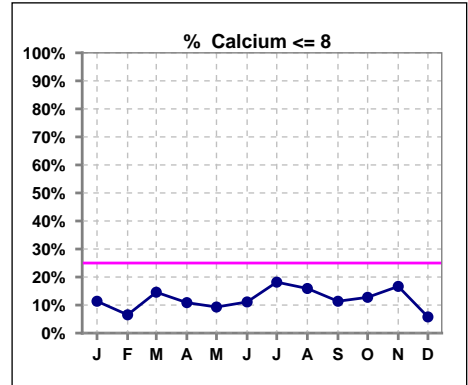
Lab methodology for PTH changed January 2012

**III. OSTEODYSTROPHY**

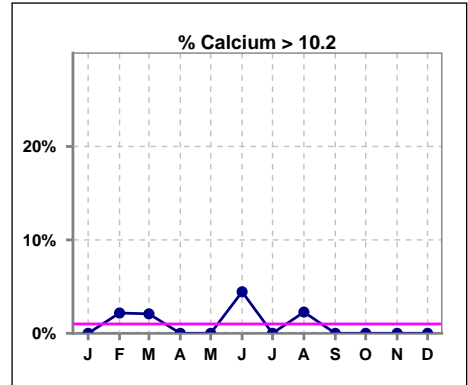
	Jan	Feb	Mar	Apr	May	Jun	Jul	Aug	Sep	Oct	Nov	Dec
# PO4	44	46	48	46	43	45	44	44	44	47	48	52
# PO4 3.5 to 5.5	19	18	17	19	16	13	14	16	14	14	20	18
Pop. Mean	5.9	6.1	6.2	6.2	6.1	6.6	6.6	6.3	5.9	6.1	6.3	6.4
Std. Deviation	2.02	2.03	1.89	1.64	1.96	2.16	2.06	2.00	1.67	1.87	2.03	1.75
% PO4 3.5 to 5.5	43%	39%	35%	41%	37%	29%	32%	36%	32%	30%	42%	35%



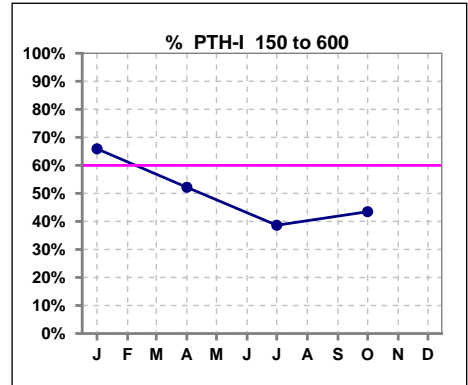
	Jan	Feb	Mar	Apr	May	Jun	Jul	Aug	Sep	Oct	Nov	Dec
# Calcium	44	46	48	46	43	45	44	44	44	47	48	52
# Calcium <= 8	5	3	7	5	4	5	8	7	5	6	8	3
Pop. Mean	8.9	9.1	9.1	9.0	9.0	9.0	8.8	8.9	8.9	8.9	9.0	9.0
Std. Deviation	0.76	0.76	0.74	0.75	0.75	0.80	0.78	0.76	0.67	0.73	0.73	0.78
% Calcium <= 8	11%	7%	15%	11%	9%	11%	18%	16%	11%	13%	17%	6%



	Jan	Feb	Mar	Apr	May	Jun	Jul	Aug	Sep	Oct	Nov	Dec
# Calcium	44	46	48	46	43	45	44	44	44	47	48	52
# Calcium > 10.2	0	1	1	0	0	2	0	1	0	0	0	0
Pop. Mean	8.9	9.1	9.1	9.0	9.0	9.0	8.8	8.9	8.9	8.9	9.0	9.0
Std. Deviation	0.76	0.76	0.74	0.75	0.75	0.80	0.78	0.76	0.67	0.73	0.73	0.78
% Calcium > 10.2	0%	2%	2%	0%	0%	4%	0%	2%	0%	0%	0%	0%



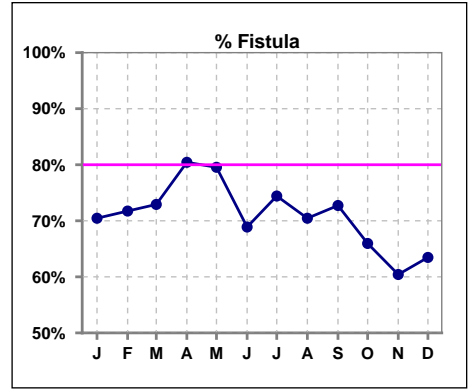
	Jan	Feb	Mar	Apr	May	Jun	Jul	Aug	Sep	Oct	Nov	Dec
# PTH-I	44			46			44			46		
# PTH-I 150 to 600	29			24			17			20		
Pop. Mean	597			675			783			813		
Std. Deviation	426			525			571			657		
% PTH-I 150 to 600	66%			52%			39%			43%		



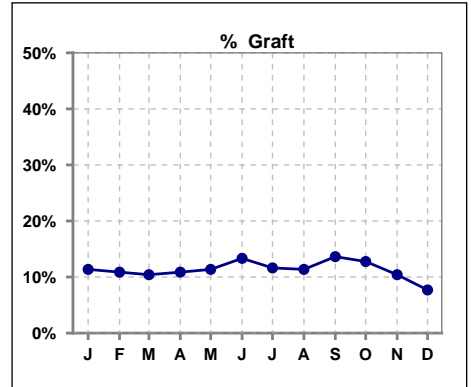
Methodology: a) All labs for 'Adequacy of Dialysis', 'Nutrition', 'Osteodystrophy', 'Anemia' and 'Diabetes' based on last value of month; b) BP's and #L processed are average of all values for month; c) Access data takes last access of month; d) Values for SGA and 'Infection Control' use most recent result.

**IV. ACCESS**

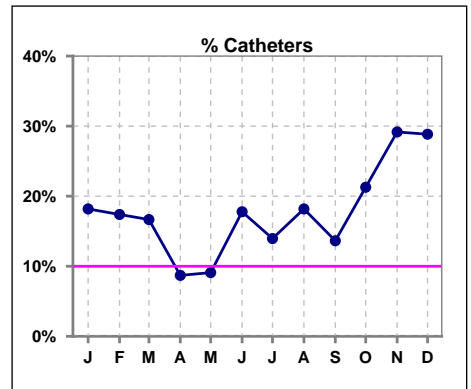
	Jan	Feb	Mar	Apr	May	Jun	Jul	Aug	Sep	Oct	Nov	Dec
# Access	44	46	48	46	44	45	43	44	44	47	48	52
# Fistula	31	33	35	37	35	31	32	31	32	31	29	33
% Fistula	70%	72%	73%	80%	80%	69%	74%	70%	73%	66%	60%	63%



	Jan	Feb	Mar	Apr	May	Jun	Jul	Aug	Sep	Oct	Nov	Dec
# Access	44	46	48	46	44	45	43	44	44	47	48	52
# Graft	5	5	5	5	5	6	5	5	6	6	5	4
% Graft	11%	11%	10%	11%	11%	13%	12%	11%	14%	13%	10%	8%



	Jan	Feb	Mar	Apr	May	Jun	Jul	Aug	Sep	Oct	Nov	Dec
# Access	44	46	48	46	44	45	43	44	44	47	48	52
# Catheters	8	8	8	4	4	8	6	8	6	10	14	15
% Catheters	18%	17%	17%	9%	9%	18%	14%	18%	14%	21%	29%	29%



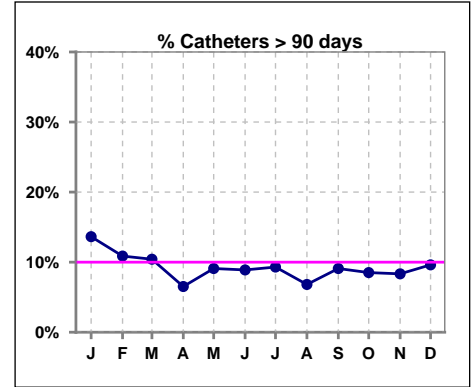
Methodology: a) All labs for 'Adequacy of Dialysis', 'Nutrition', 'Osteodystrophy', 'Anemia' and 'Diabetes' based on last value of month; b) BP's and #L processed are average of all values for month; c) Access data takes last access of month; d) Values for SGA and 'Infection Control' use most recent result.

**IV. ACCESS - CONT.**

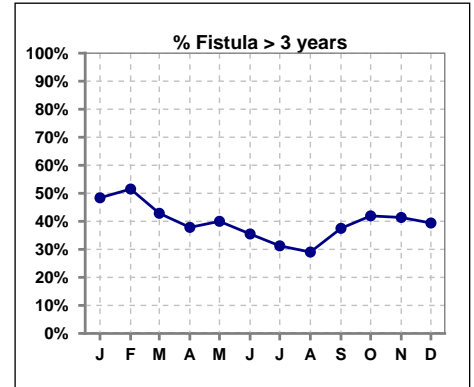
**Catheters > 90 days**

	Jan	Feb	Mar	Apr	May	Jun	Jul	Aug	Sep	Oct	Nov	Dec
# Access	44	46	48	46	44	45	43	44	44	47	48	52
# Catheters	6	5	5	3	4	4	4	3	4	4	4	5
% Catheters	14%	11%	10%	7%	9%	9%	9%	7%	9%	9%	8%	10%

Definition: Catheter in use on last treatment of the month



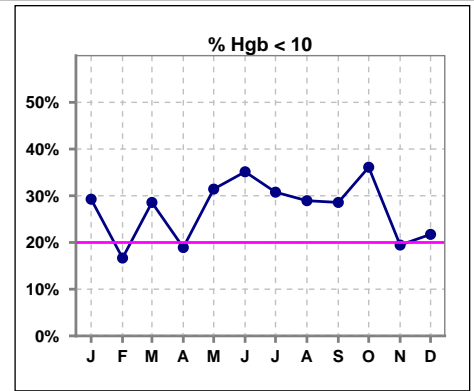
	Jan	Feb	Mar	Apr	May	Jun	Jul	Aug	Sep	Oct	Nov	Dec
# Fistula	31	33	35	37	35	31	32	31	32	31	29	33
# Fistula > 3 yrs	15	17	15	14	14	11	10	9	12	13	12	13
% Fistula > 3 yrs	48%	52%	43%	38%	40%	35%	31%	29%	38%	42%	41%	39%



**V. ANEMIA**

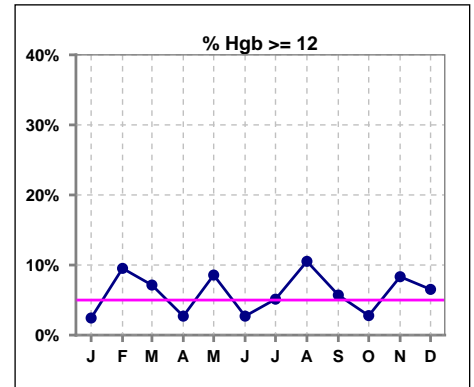
	Jan	Feb	Mar	Apr	May	Jun	Jul	Aug	Sep	Oct	Nov	Dec
# Hgb	41	42	42	37	35	37	39	38	35	36	36	46
# Hgb < 10	12	7	12	7	11	13	12	11	10	13	7	10
Pop. Mean	10.5	11.0	10.8	10.7	10.7	10.1	10.5	10.6	10.6	10.3	10.7	10.6
Std. Deviation	1.0	1.0	1.1	0.8	1.3	1.4	1.2	1.5	1.0	1.0	1.2	1.0
% Hgb < 10	29%	17%	29%	19%	31%	35%	31%	29%	29%	36%	19%	22%

Note: Excludes patients who received no ESA in month.



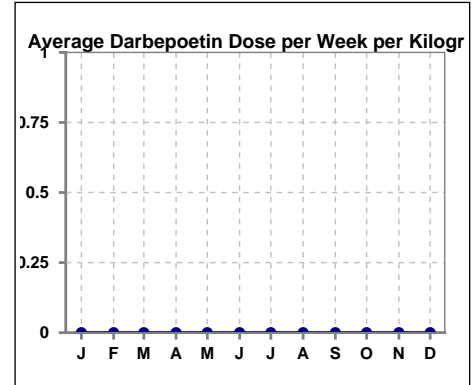
	Jan	Feb	Mar	Apr	May	Jun	Jul	Aug	Sep	Oct	Nov	Dec
# Hgb	41	42	42	37	35	37	39	38	35	36	36	46
# Hgb >= 12	1	4	3	1	3	1	2	4	2	1	3	3
Pop. Mean	10.5	11.0	10.8	10.7	10.7	10.1	10.5	10.6	10.6	10.3	10.7	10.6
Std. Deviation	1.0	1.0	1.1	0.8	1.3	1.4	1.2	1.5	1.0	1.0	1.2	1.0
% Hgb >= 12	2%	10%	7%	3%	9%	3%	5%	11%	6%	3%	8%	7%

Note: Excludes patients who received no ESA in month.



**Average Darbepoetin Dose per Week per Kilogram**

	Jan	Feb	Mar	Apr	May	Jun	Jul	Aug	Sep	Oct	Nov	Dec
# Average Darbepoetin	0	0	0	0	0	0	0	0	0	0	0	0

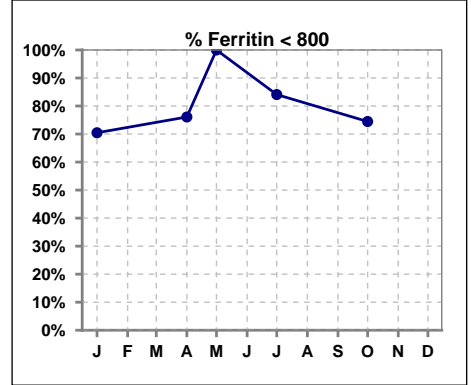




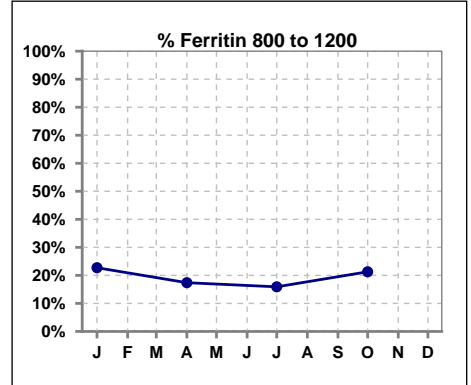
**V. ANEMIA - CONT.**

**Iron Profile**

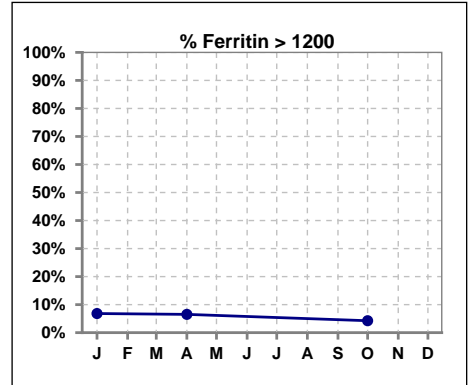
	Jan	Feb	Mar	Apr	May	Jun	Jul	Aug	Sep	Oct	Nov	Dec
# Ferritin	44			46	3		44			47		
# Ferritin < 800	31			35	3		37			35		
Pop. Mean	616			553	242		470			529		
Std. Deviation	431			351	171		310			352		
<b>% Ferritin &lt; 800</b>	<b>70%</b>			<b>76%</b>	<b>100%</b>		<b>84%</b>			<b>74%</b>		



	Jan	Feb	Mar	Apr	May	Jun	Jul	Aug	Sep	Oct	Nov	Dec
# Ferritin	44			46	3		44			47		
# Ferritin 800 to 1200	10			8			7			10		
Pop. Mean	616			553	242		470			529		
Std. Deviation	431			351	171		310			352		
<b>% Ferritin 800 to 1200</b>	<b>23%</b>			<b>17%</b>			<b>16%</b>			<b>21%</b>		



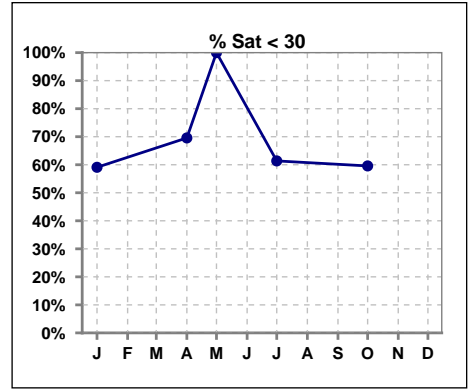
	Jan	Feb	Mar	Apr	May	Jun	Jul	Aug	Sep	Oct	Nov	Dec
# Ferritin	44			46	3		44			47		
# Ferritin > 1200	3			3						2		
Pop. Mean	616			553	242		470			529		
Std. Deviation	431			351	171		310			352		
<b>% Ferritin &gt; 1200</b>	<b>7%</b>			<b>7%</b>						<b>4%</b>		



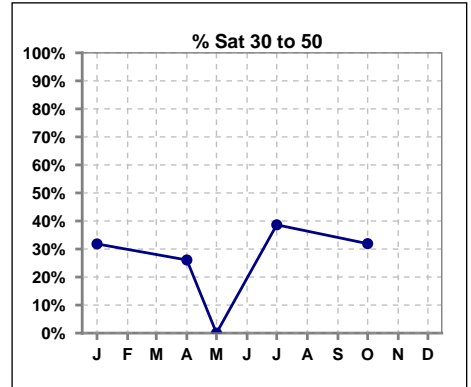
Methodology: a) All labs for 'Adequacy of Dialysis', 'Nutrition', 'Osteodystrophy', 'Anemia' and 'Diabetes' based on last value of month; b) BP's and #L processed are average of all values for month; c) Access data takes last access of month; d) Values for SGA and 'Infection Control' use most recent result.

**V. ANEMIA - CONT.**

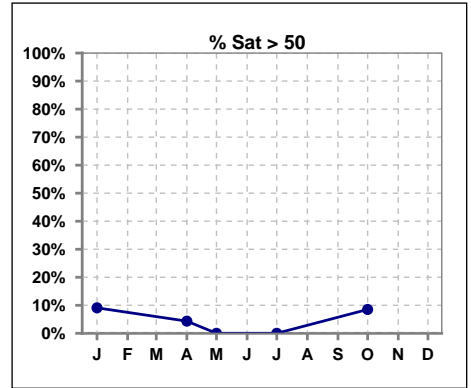
	Jan	Feb	Mar	Apr	May	Jun	Jul	Aug	Sep	Oct	Nov	Dec
# % Sat	44			46	3		44			47		
# % Sat < 30	26			32	3		27			28		
Pop. Mean	31			26	22		28			29		
Std. Deviation	13			12	4		10			13		
<b>% % Sat &lt; 30</b>	<b>59%</b>			<b>70%</b>	<b>100%</b>		<b>61%</b>			<b>60%</b>		



	Jan	Feb	Mar	Apr	May	Jun	Jul	Aug	Sep	Oct	Nov	Dec
# % Sat	44			46	3		44			47		
# % Sat 30 to 50	14			12	0		17			15		
Pop. Mean	31			26	22		28			29		
Std. Deviation	13			12	4		10			13		
<b>% % Sat 30 to 50</b>	<b>32%</b>			<b>26%</b>	<b>0%</b>		<b>39%</b>			<b>32%</b>		

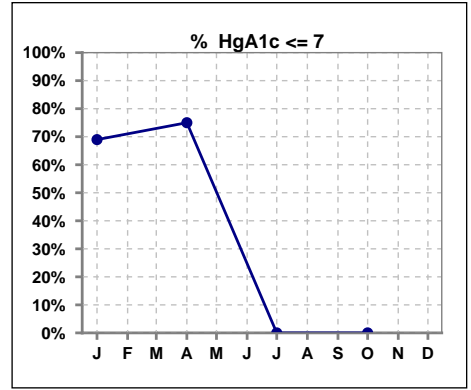


	Jan	Feb	Mar	Apr	May	Jun	Jul	Aug	Sep	Oct	Nov	Dec
# % Sat	44			46	3		44			47		
# % Sat > 50	4			2	0		0			4		
Pop. Mean	31			26	22		28			29		
Std. Deviation	13			12	4		10			13		
<b>% % Sat &gt; 50</b>	<b>9%</b>			<b>4%</b>	<b>0%</b>		<b>0%</b>			<b>9%</b>		



**VI. Diabetes**

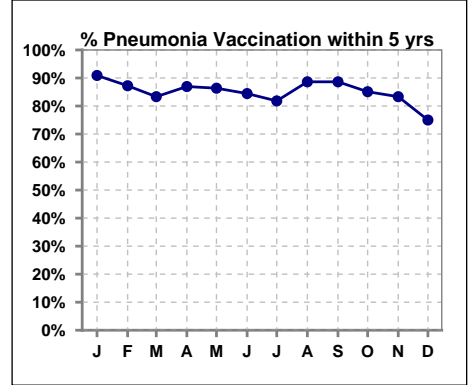
	Jan	Feb	Mar	Apr	May	Jun	Jul	Aug	Sep	Oct	Nov	Dec
# HgA1c	29			32			0			0		
# HgA1c <= 7	20			24			0			0		
Pop. Mean	6.3			6.3			0			0		
Std. Deviation	1.46			1.71			0			0		
<b>% HgA1c &lt;= 7</b>	<b>69%</b>			<b>75%</b>			<b>0%</b>			<b>0%</b>		



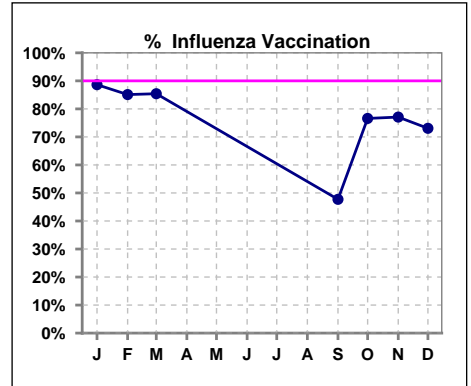
**VII. Infection Control**

**Pneumonia vaccination within the past five years**

	Jan	Feb	Mar	Apr	May	Jun	Jul	Aug	Sep	Oct	Nov	Dec
# Patient	44	47	48	46	44	45	44	44	44	47	48	52
# Pneumonia	40	41	40	40	38	38	36	39	39	40	40	39
% Pneumonia	91%	87%	83%	87%	86%	84%	82%	89%	89%	85%	83%	75%



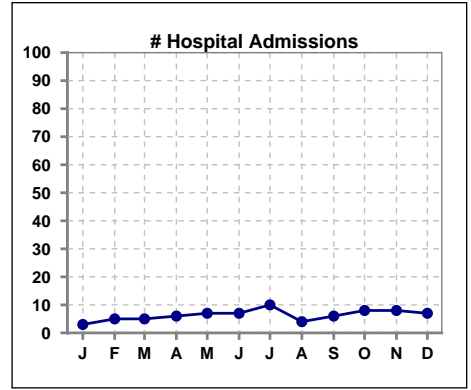
	Jan	Feb	Mar	Apr	May	Jun	Jul	Aug	Sep	Oct	Nov	Dec
# Patient	44	47	48						44	47	48	52
# Influenza	39	40	41						21	36	37	38
% Influenza	89%	85%	85%						48%	77%	77%	73%



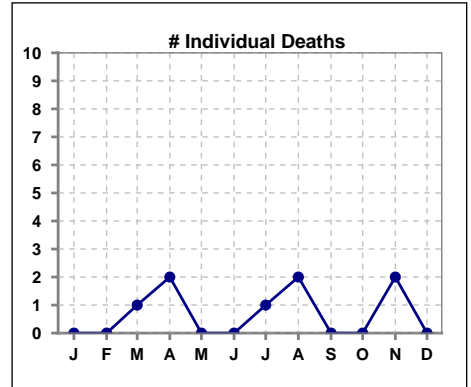
Methodology: a) All labs for 'Adequacy of Dialysis', 'Nutrition', 'Osteodystrophy', 'Anemia' and 'Diabetes' based on last value of month; b) BP's and #L processed are average of all values for month; c) Access data takes last access of month; d) Values for SGA and 'Infection Control' use most recent result.

**VIII. Outcome measures**

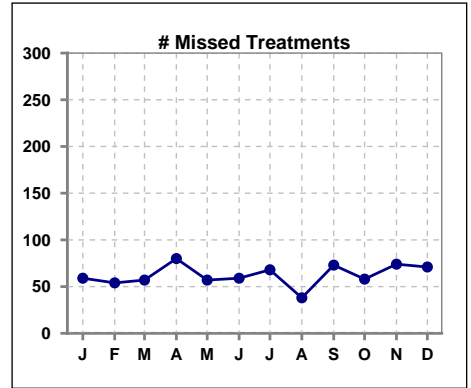
	Jan	Feb	Mar	Apr	May	Jun	Jul	Aug	Sep	Oct	Nov	Dec
# Patient	44	47	48	46	44	45	44	44	44	47	48	52
# Hospital Admissions	3	5	5	6	7	7	10	4	6	8	8	7



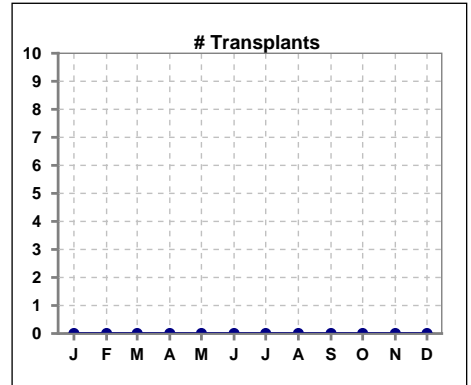
	Jan	Feb	Mar	Apr	May	Jun	Jul	Aug	Sep	Oct	Nov	Dec
# Patient	44	47	48	46	44	45	44	44	44	47	48	52
# Individual Deaths	0	0	1	2	0	0	1	2	0	0	2	0



	Jan	Feb	Mar	Apr	May	Jun	Jul	Aug	Sep	Oct	Nov	Dec
# Patient	44	47	48	46	44	45	44	44	44	47	48	52
# Missed Treatments	59	54	57	80	57	59	68	38	73	58	74	71



	Jan	Feb	Mar	Apr	May	Jun	Jul	Aug	Sep	Oct	Nov	Dec
# Patient	44	47	48	46	44	45	44	44	44	47	48	52
# Transplants	0	0	0	0	0	0	0	0	0	0	0	0



Methodology: a) All labs for 'Adequacy of Dialysis', 'Nutrition', 'Osteodystrophy', 'Anemia' and 'Diabetes' based on last value of month; b) BP's and #L processed are average of all values for month; c) Access data takes last access of month; d) Values for SGA and 'Infection Control' use most recent result.