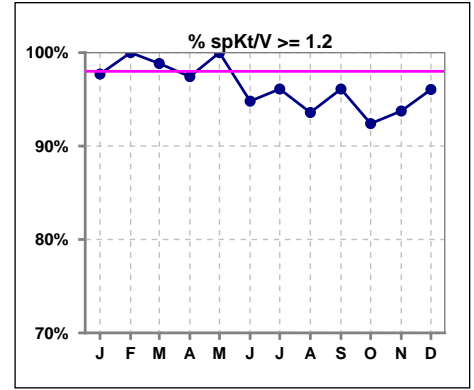
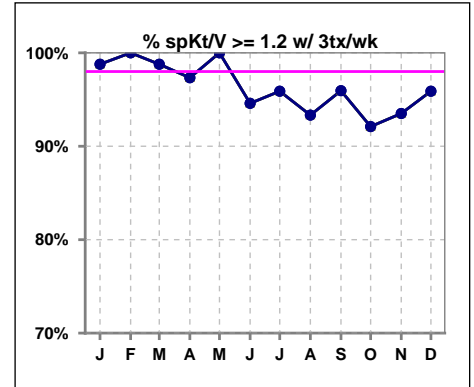


I. ADEQUACY OF DIALYSIS

	Jan	Feb	Mar	Apr	May	Jun	Jul	Aug	Sep	Oct	Nov	Dec
# spKt/V	87	84	86	78	80	77	77	78	77	79	80	76
# spKt/V >= 1.2	85	84	85	76	80	73	74	73	74	73	75	73
Pop. Mean	1.65	1.67	1.67	1.63	1.63	1.54	1.54	1.54	1.54	1.53	1.52	1.55
Std. Deviation	0.33	0.29	0.29	0.27	0.27	0.26	0.27	0.28	0.28	0.30	0.26	0.26
% spKt/V >= 1.2	98%	100%	99%	97%	100%	95%	96%	94%	96%	92%	94%	96%

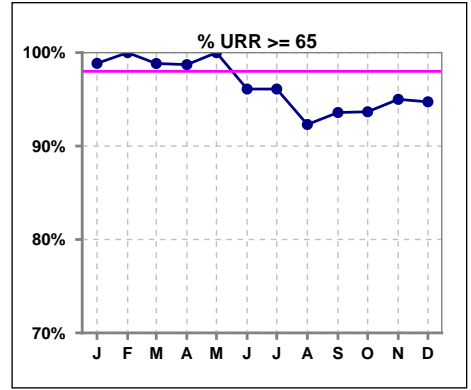


	Jan	Feb	Mar	Apr	May	Jun	Jul	Aug	Sep	Oct	Nov	Dec
# spKt/V w/ 3tx/wk	82	80	82	75	77	74	73	75	74	76	77	73
# spKt/V >= 1.2 w/3tx/wk	81	80	81	73	77	70	70	70	71	70	72	70
Pop. Mean	1.66	1.67	1.67	1.63	1.62	1.54	1.54	1.54	1.54	1.52	1.51	1.54
Std. Deviation	0.32	0.29	0.29	0.28	0.26	0.26	0.27	0.28	0.28	0.29	0.25	0.25
% >= 1.2 w/3tx/wk	99%	100%	99%	97%	100%	95%	96%	93%	96%	92%	94%	96%

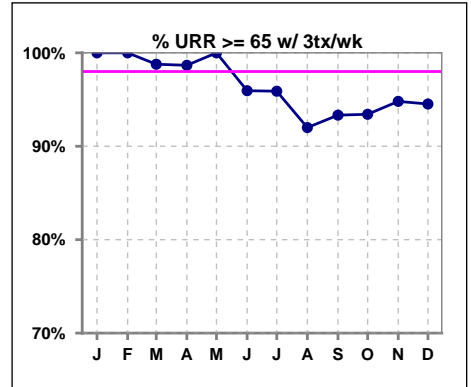


I. ADEQUACY OF DIALYSIS - CONT.

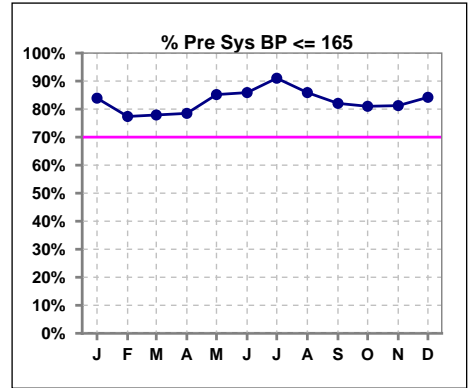
	Jan	Feb	Mar	Apr	May	Jun	Jul	Aug	Sep	Oct	Nov	Dec
# URR	87	84	86	78	80	77	77	78	78	79	80	76
# URR >= 65	86	84	85	77	80	74	74	72	73	74	76	72
Pop. Mean	76	76	76	75	75	74	74	73	73	73	73	74
Std. Deviation	6.21	5.35	5.43	5.67	5.13	5.58	5.87	6.60	6.83	6.07	5.92	5.41
% URR >= 65	99%	100%	99%	99%	100%	96%	96%	92%	94%	94%	95%	95%



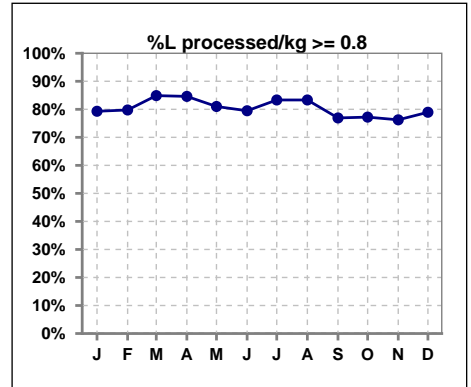
	Jan	Feb	Mar	Apr	May	Jun	Jul	Aug	Sep	Oct	Nov	Dec
# URR w/ 3tx/wk	82	80	82	75	77	74	73	75	75	76	77	73
# URR>=65 w/ 3tx/wk	82	80	81	74	77	71	70	69	70	71	73	69
Pop. Mean	76	76	76	75	75	74	74	74	73	73	73	74
Std. Deviation	5.72	5.38	5.45	5.70	5.09	5.56	5.99	6.62	6.88	5.89	5.76	5.25
% URR>=65 w/ 3tx/wk	100%	100%	99%	99%	100%	96%	96%	92%	93%	93%	95%	95%



	Jan	Feb	Mar	Apr	May	Jun	Jul	Aug	Sep	Oct	Nov	Dec
# Pre Sys BP	87	84	86	79	81	78	78	78	78	79	80	76
# Pre Sys BP <= 165	74	68	68	63	72	69	72	68	65	64	68	65
Pop. Mean	147	148	149	150	146	144	143	144	146	147	146	146
Std. Deviation	16.8	19.6	19.0	17.7	18.3	18.3	17.9	18.0	18.0	19.3	19.5	17.0
% Pre Sys BP <=165	84%	77%	78%	78%	85%	86%	91%	86%	82%	81%	81%	84%



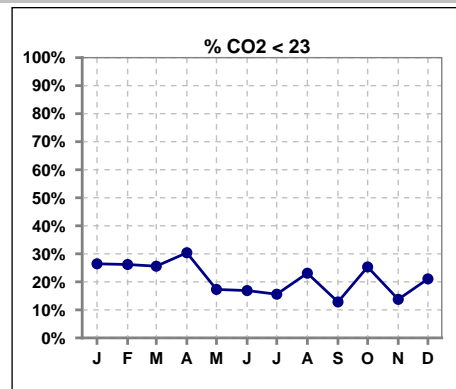
	Jan	Feb	Mar	Apr	May	Jun	Jul	Aug	Sep	Oct	Nov	Dec
# L processed/kg	87	84	86	78	79	78	78	78	78	79	80	76
# L processed/kg>=0.8	69	67	73	66	64	62	65	65	60	61	61	60
Pop. Mean	1	1	1	1	1	1	1	1	1	1	1	1
Std. Deviation	0.3	0.3	0.3	0.2	0.2	0.2	0.2	0.3	0.3	0.3	0.3	0.2
% L processed/kg>=0.8	79%	80%	85%	85%	81%	79%	83%	83%	77%	77%	76%	79%



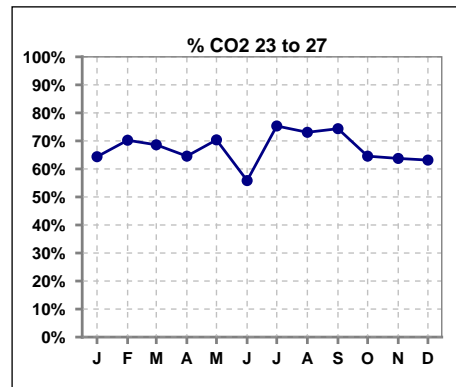
Methodology: a) All labs for 'Adequacy of Dialysis', 'Nutrition', 'Osteodystrophy', 'Anemia' and 'Diabetes' based on last value of month; b) BP's and #L processed are average of all values for month; c) Access data takes last access of month; d) Values for SGA and 'Infection Control' use most recent result.

I. ADEQUACY OF DIALYSIS - CONT.

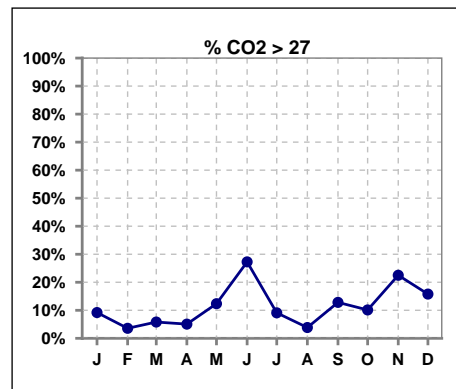
	Jan	Feb	Mar	Apr	May	Jun	Jul	Aug	Sep	Oct	Nov	Dec
# CO2	87	84	86	79	81	77	77	78	78	79	80	76
# CO2 < 23	23	22	22	24	14	13	12	18	10	20	11	16
Pop. Mean	24	24	24	24	25	26	25	24	25	24	25	25
Std. Deviation	2.54	2.50	2.78	2.38	2.50	2.90	2.50	2.68	2.34	2.76	3.05	2.57
% CO2 < 23	26%	26%	26%	30%	17%	17%	16%	23%	13%	25%	14%	21%



	Jan	Feb	Mar	Apr	May	Jun	Jul	Aug	Sep	Oct	Nov	Dec
# CO2	87	84	86	79	81	77	77	78	78	79	80	76
# CO2 23 to 27	56	59	59	51	57	43	58	57	58	51	51	48
Pop. Mean	24	24	24	24	25	26	25	24	25	24	25	25
Std. Deviation	2.54	2.50	2.78	2.38	2.50	2.90	2.50	2.68	2.34	2.76	3.05	2.57
% CO2 23 to 27	64%	70%	69%	65%	70%	56%	75%	73%	74%	65%	64%	63%



	Jan	Feb	Mar	Apr	May	Jun	Jul	Aug	Sep	Oct	Nov	Dec
# CO2	87	84	86	79	81	77	77	78	78	79	80	76
# CO2 > 27	8	3	5	4	10	21	7	3	10	8	18	12
Pop. Mean	24	24	24	24	25	26	25	24	25	24	25	25
Std. Deviation	2.54	2.50	2.78	2.38	2.50	2.90	2.50	2.68	2.34	2.76	3.05	2.57
% CO2 > 27	9%	4%	6%	5%	12%	27%	9%	4%	13%	10%	23%	16%

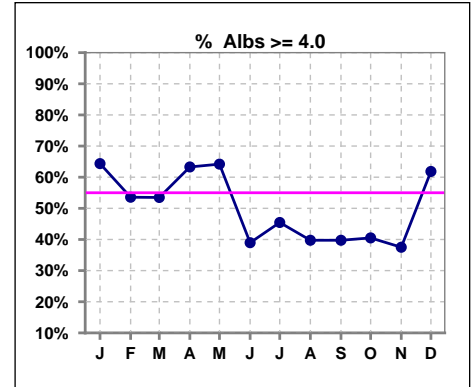


Methodology: a) All labs for 'Adequacy of Dialysis', 'Nutrition', 'Osteodystrophy', 'Anemia' and 'Diabetes' based on last value of month; b) BP's and #L processed are average of all values for month; c) Access data takes last access of month; d) Values for SGA and 'Infection Control' use most recent result.

*Albumin values use BCG method - as of July 2001

II. NUTRITION

	Jan	Feb	Mar	Apr	May	Jun	Jul	Aug	Sep	Oct	Nov	Dec
# Albumin	87	84	86	79	81	77	77	78	78	79	80	76
# Albumin >= 4.0	56	45	46	50	52	30	35	31	31	32	30	47
Pop. Mean	4.0	3.9	3.9	3.9	4.0	3.9	3.9	3.8	3.8	3.9	3.8	4.0
Std. Deviation	0.45	0.46	0.43	0.46	0.37	0.45	0.41	0.39	0.38	0.39	0.43	0.38
% Alb >= 4.0	64%	54%	53%	63%	64%	39%	45%	40%	40%	41%	38%	62%

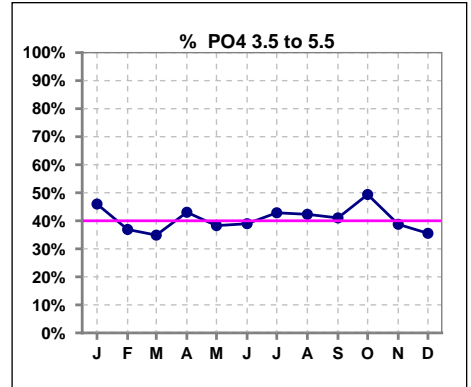


Methodology: a) All labs for 'Adequacy of Dialysis', 'Nutrition', 'Osteodystrophy', 'Anemia' and 'Diabetes' based on last value of month; b) BP's and #L processed are average of all values for month; c) Access data takes last access of month; d) Values for SGA and 'Infection Control' use most recent result.

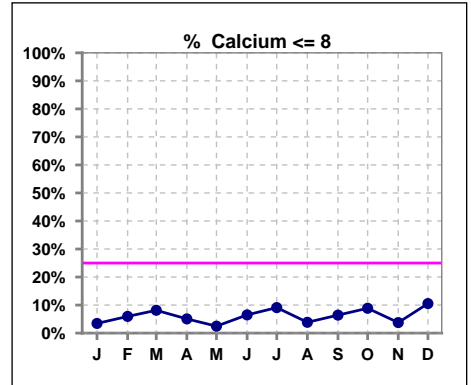
Lab methodology for PTH changed January 2012

III. OSTEODYSTROPHY

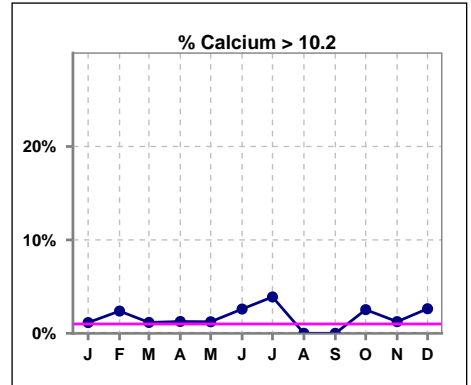
	Jan	Feb	Mar	Apr	May	Jun	Jul	Aug	Sep	Oct	Nov	Dec
# PO4	87	84	86	79	81	77	77	78	78	79	80	76
# PO4 3.5 to 5.5	40	31	30	34	31	30	33	33	32	39	31	27
Pop. Mean	5.7	5.9	5.9	5.8	5.7	5.9	5.9	5.7	5.6	5.8	5.9	6.0
Std. Deviation	1.87	2.05	1.80	1.93	1.85	1.74	1.77	1.58	1.72	2.16	1.86	1.96
% PO4 3.5 to 5.5	46%	37%	35%	43%	38%	39%	43%	42%	41%	49%	39%	36%



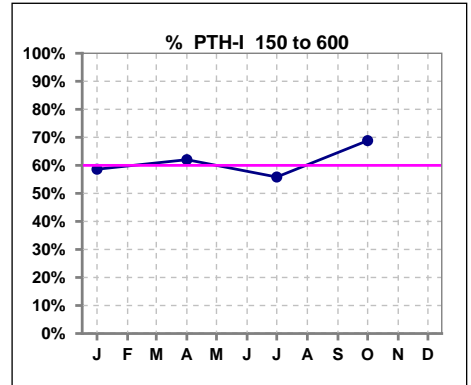
	Jan	Feb	Mar	Apr	May	Jun	Jul	Aug	Sep	Oct	Nov	Dec
# Calcium	87	84	86	79	81	77	77	78	78	79	80	76
# Calcium <= 8	3	5	7	4	2	5	7	3	5	7	3	8
Pop. Mean	9.1	9.1	9.1	9.2	9.2	9.1	9.1	9.1	9.0	9.0	9.1	9.0
Std. Deviation	0.62	0.76	0.74	0.70	0.61	0.69	0.74	0.61	0.60	0.63	0.62	0.70
% Calcium <= 8	3%	6%	8%	5%	2%	6%	9%	4%	6%	9%	4%	11%



	Jan	Feb	Mar	Apr	May	Jun	Jul	Aug	Sep	Oct	Nov	Dec
# Calcium	87	84	86	79	81	77	77	78	78	79	80	76
# Calcium > 10.2	1	2	1	1	1	2	3	0	0	2	1	2
Pop. Mean	9.1	9.1	9.1	9.2	9.2	9.1	9.1	9.1	9.0	9.0	9.1	9.0
Std. Deviation	0.62	0.76	0.74	0.70	0.61	0.69	0.74	0.61	0.60	0.63	0.62	0.70
% Calcium > 10.2	1%	2%	1%	1%	1%	3%	4%	0%	0%	3%	1%	3%



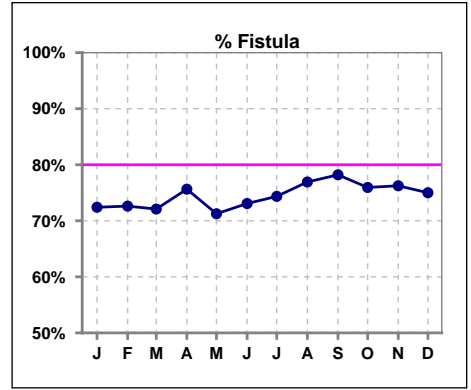
	Jan	Feb	Mar	Apr	May	Jun	Jul	Aug	Sep	Oct	Nov	Dec
# PTH-I	87			79			77			77		
# PTH-I 150 to 600	51			49			43			53		
Pop. Mean	530			471			560			444		
Std. Deviation	380			357			402			313		
% PTH-I 150 to 600	59%			62%			56%			69%		



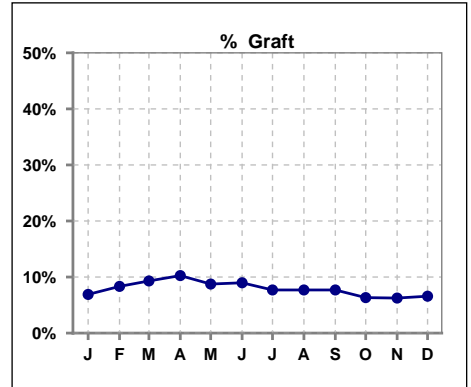
Methodology: a) All labs for 'Adequacy of Dialysis', 'Nutrition', 'Osteodystrophy', 'Anemia' and 'Diabetes' based on last value of month; b) BP's and #L processed are average of all values for month; c) Access data takes last access of month; d) Values for SGA and 'Infection Control' use most recent result.

IV. ACCESS

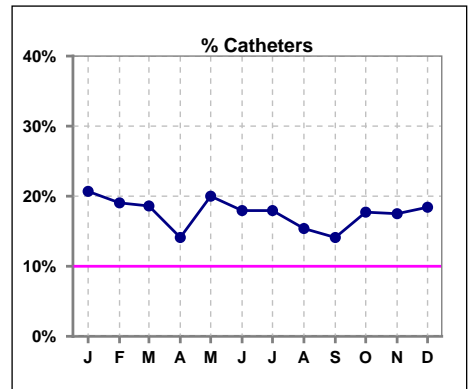
	Jan	Feb	Mar	Apr	May	Jun	Jul	Aug	Sep	Oct	Nov	Dec
# Access	87	84	86	78	80	78	78	78	78	79	80	76
# Fistula	63	61	62	59	57	57	58	60	61	60	61	57
% Fistula	72%	73%	72%	76%	71%	73%	74%	77%	78%	76%	76%	75%



	Jan	Feb	Mar	Apr	May	Jun	Jul	Aug	Sep	Oct	Nov	Dec
# Access	87	84	86	78	80	78	78	78	78	79	80	76
# Graft	6	7	8	8	7	7	6	6	6	5	5	5
% Graft	7%	8%	9%	10%	9%	9%	8%	8%	8%	6%	6%	7%



	Jan	Feb	Mar	Apr	May	Jun	Jul	Aug	Sep	Oct	Nov	Dec
# Access	87	84	86	78	80	78	78	78	78	79	80	76
# Catheters	18	16	16	11	16	14	14	12	11	14	14	14
% Catheters	21%	19%	19%	14%	20%	18%	18%	15%	14%	18%	18%	18%



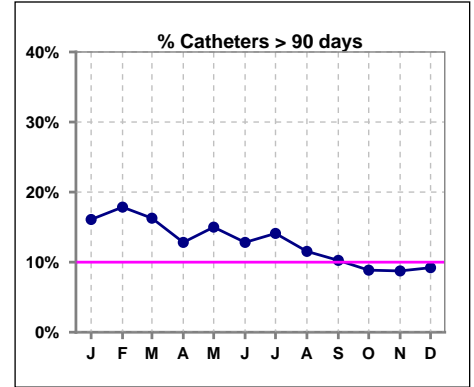
Methodology: a) All labs for 'Adequacy of Dialysis', 'Nutrition', 'Osteodystrophy', 'Anemia' and 'Diabetes' based on last value of month; b) BP's and #L processed are average of all values for month; c) Access data takes last access of month; d) Values for SGA and 'Infection Control' use most recent result.

IV. ACCESS - CONT.

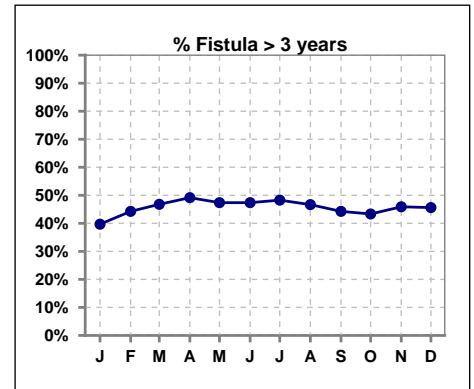
Catheters > 90 days

	Jan	Feb	Mar	Apr	May	Jun	Jul	Aug	Sep	Oct	Nov	Dec
# Access	87	84	86	78	80	78	78	78	78	79	80	76
# Catheters	14	15	14	10	12	10	11	9	8	7	7	7
% Catheters	16%	18%	16%	13%	15%	13%	14%	12%	10%	9%	9%	9%

Definition: Catheter in use on last treatment of the month



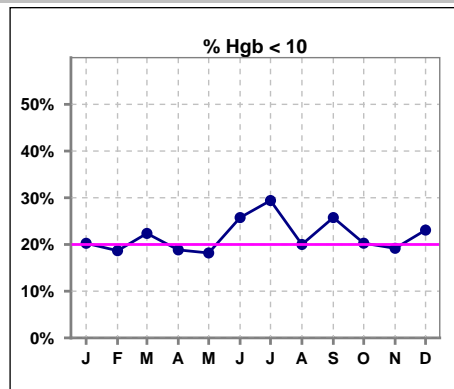
	Jan	Feb	Mar	Apr	May	Jun	Jul	Aug	Sep	Oct	Nov	Dec
# Fistula	63	61	62	59	57	57	58	60	61	60	61	57
# Fistula > 3 yrs	25	27	29	29	27	27	28	28	27	26	28	26
% Fistula > 3 yrs	40%	44%	47%	49%	47%	47%	48%	47%	44%	43%	46%	46%



V. ANEMIA

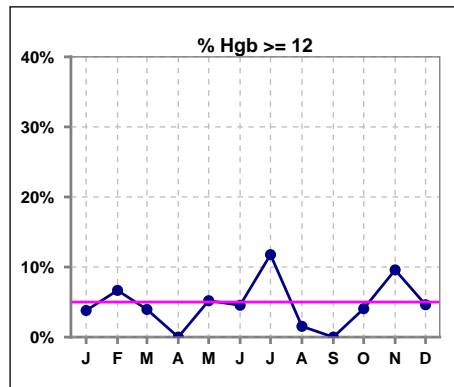
	Jan	Feb	Mar	Apr	May	Jun	Jul	Aug	Sep	Oct	Nov	Dec
# Hgb	79	75	76	69	77	66	68	65	66	74	73	65
# Hgb < 10	16	14	17	13	14	17	20	13	17	15	14	15
Pop. Mean	10.4	10.7	10.7	10.7	10.7	10.5	10.6	10.6	10.4	10.5	10.8	10.5
Std. Deviation	1.2	1.1	1.1	0.9	1.2	1.2	1.4	1.0	1.0	1.2	1.3	1.2
% Hgb < 10	20%	19%	22%	19%	18%	26%	29%	20%	26%	20%	19%	23%

Note: Excludes patients who received no ESA in month.



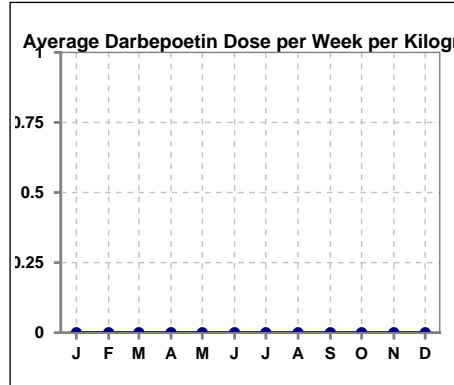
	Jan	Feb	Mar	Apr	May	Jun	Jul	Aug	Sep	Oct	Nov	Dec
# Hgb	79	75	76	69	77	66	68	65	66	74	73	65
# Hgb >= 12	3	5	3	0	4	3	8	1	0	3	7	3
Pop. Mean	10.4	10.7	10.7	10.7	10.7	10.5	10.6	10.6	10.4	10.5	10.8	10.5
Std. Deviation	1.2	1.1	1.1	0.9	1.2	1.2	1.4	1.0	1.0	1.2	1.3	1.2
% Hgb >= 12	4%	7%	4%	0%	5%	5%	12%	2%	0%	4%	10%	5%

Note: Excludes patients who received no ESA in month.



Average Darbepoetin Dose per Week per Kilogram

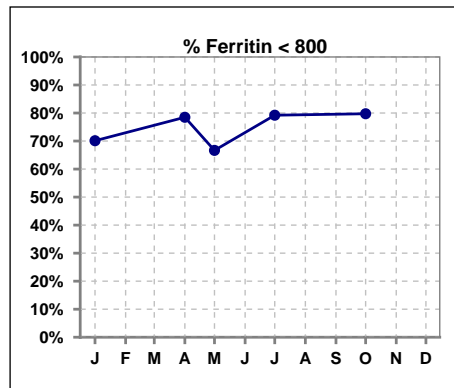
	Jan	Feb	Mar	Apr	May	Jun	Jul	Aug	Sep	Oct	Nov	Dec
# Average Darbepoetin	0	0	0	0	0	0	0	0	0	0	0	0



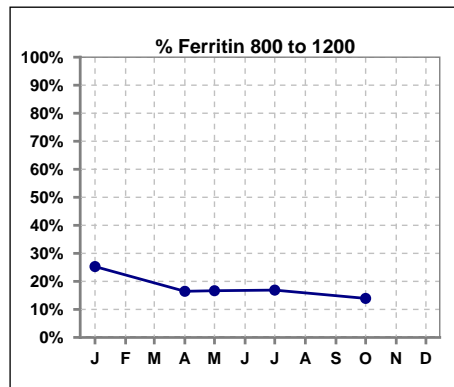
V. ANEMIA - CONT.

Iron Profile

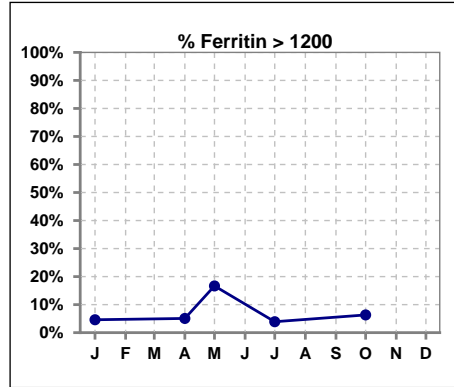
	Jan	Feb	Mar	Apr	May	Jun	Jul	Aug	Sep	Oct	Nov	Dec
# Ferritin	87			79	6		77			79		
# Ferritin < 800	61			62	4		61			63		
Pop. Mean	569			543	660		491			534		
Std. Deviation	353			348	482		367			539		
% Ferritin < 800	70%			78%	67%		79%			80%		



	Jan	Feb	Mar	Apr	May	Jun	Jul	Aug	Sep	Oct	Nov	Dec
# Ferritin	87			79	6		77			79		
# Ferritin 800 to 1200	22			13	1		13			11		
Pop. Mean	569			543	660		491			534		
Std. Deviation	353			348	482		367			539		
% Ferritin 800 to 1200	25%			16%	17%		17%			14%		



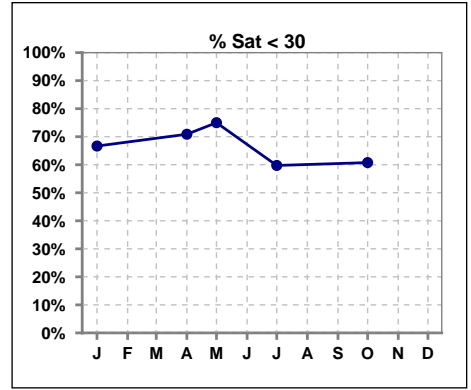
	Jan	Feb	Mar	Apr	May	Jun	Jul	Aug	Sep	Oct	Nov	Dec
# Ferritin	87			79	6		77			79		
# Ferritin > 1200	4			4	1		3			5		
Pop. Mean	569			543	660		491			534		
Std. Deviation	353			348	482		367			539		
% Ferritin > 1200	5%			5%	17%		4%			6%		



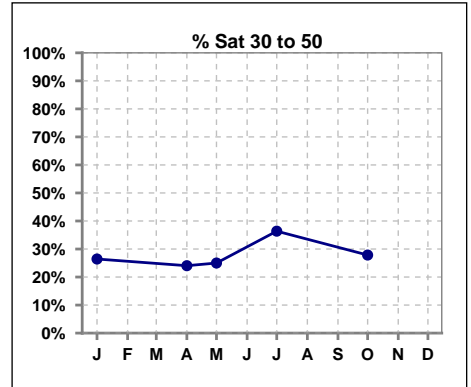
Methodology: a) All labs for 'Adequacy of Dialysis', 'Nutrition', 'Osteodystrophy', 'Anemia' and 'Diabetes' based on last value of month; b) BP's and #L processed are average of all values for month; c) Access data takes last access of month; d) Values for SGA and 'Infection Control' use most recent result.

V. ANEMIA - CONT.

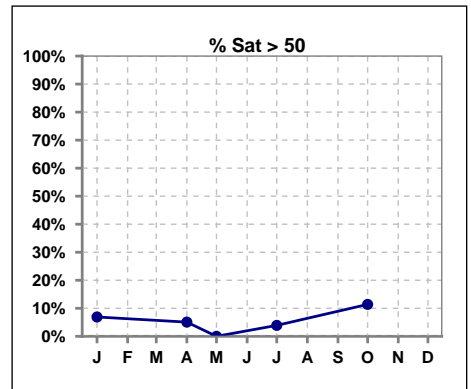
	Jan	Feb	Mar	Apr	May	Jun	Jul	Aug	Sep	Oct	Nov	Dec
# % Sat	87			79	8		77			79		
# % Sat < 30	58			56	6		46			48		
Pop. Mean	29			27	19		28			30		
Std. Deviation	18			16	10		13			16		
% % Sat < 30	67%			71%	75%		60%			61%		



	Jan	Feb	Mar	Apr	May	Jun	Jul	Aug	Sep	Oct	Nov	Dec
# % Sat	87			79	8		77			79		
# % Sat 30 to 50	23			19	2		28			22		
Pop. Mean	29			27	19		28			30		
Std. Deviation	18			16	10		13			16		
% % Sat 30 to 50	26%			24%	25%		36%			28%		

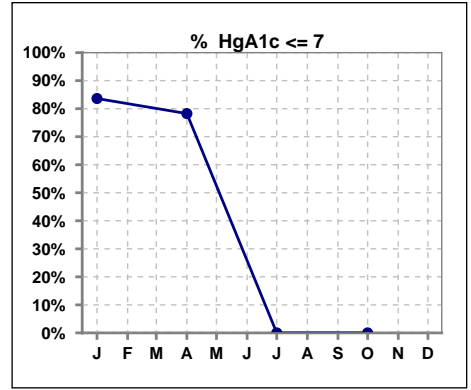


	Jan	Feb	Mar	Apr	May	Jun	Jul	Aug	Sep	Oct	Nov	Dec
# % Sat	87			79	8		77			79		
# % Sat > 50	6			4	0		3			9		
Pop. Mean	29			27	19		28			30		
Std. Deviation	18			16	10		13			16		
% % Sat > 50	7%			5%	0%		4%			11%		



VI. Diabetes

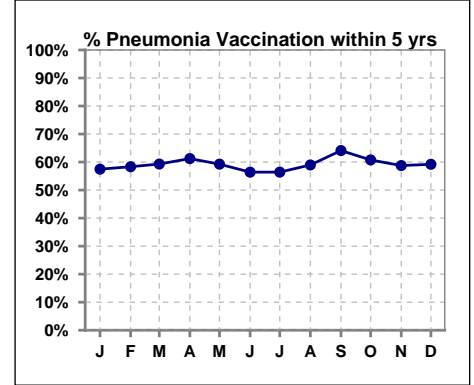
	Jan	Feb	Mar	Apr	May	Jun	Jul	Aug	Sep	Oct	Nov	Dec
# HgA1c	55			46			0			0		
# HgA1c <= 7	46			36			0			0		
Pop. Mean	5.9			6.1			0			0		
Std. Deviation	1.33			1.52			0			0		
% HgA1c <= 7	84%			78%			0%			0%		



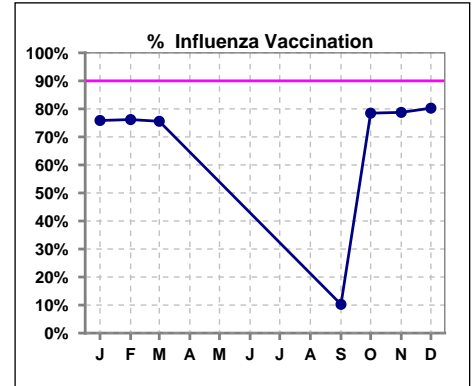
VII. Infection Control

Pneumonia vaccination within the past five years

	Jan	Feb	Mar	Apr	May	Jun	Jul	Aug	Sep	Oct	Nov	Dec
# Patient	87	84	86	80	81	78	78	78	78	79	80	76
# Pneumonia	50	49	51	49	48	44	44	46	50	48	47	45
% Pneumonia	57%	58%	59%	61%	59%	56%	56%	59%	64%	61%	59%	59%



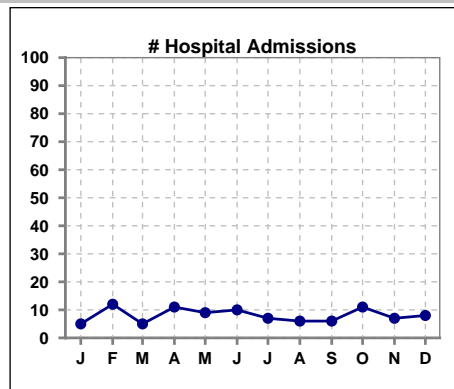
	Jan	Feb	Mar	Apr	May	Jun	Jul	Aug	Sep	Oct	Nov	Dec
# Patient	87	84	86						78	79	80	76
# Influenza	66	64	65						8	62	63	61
% Influenza	76%	76%	76%						10%	78%	79%	80%



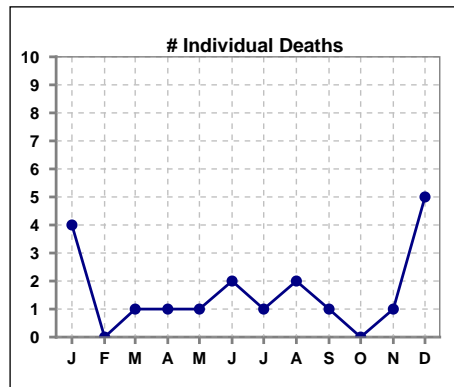
Methodology: a) All labs for 'Adequacy of Dialysis', 'Nutrition', 'Osteodystrophy', 'Anemia' and 'Diabetes' based on last value of month; b) BP's and #L processed are average of all values for month; c) Access data takes last access of month; d) Values for SGA and 'Infection Control' use most recent result.

VIII. Outcome measures

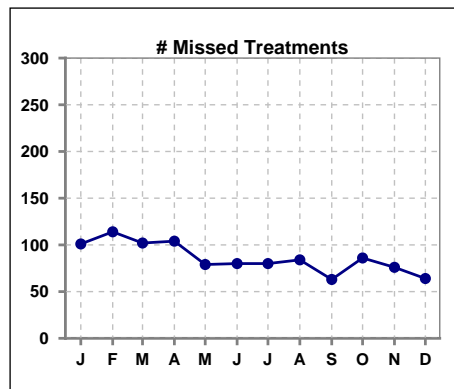
	Jan	Feb	Mar	Apr	May	Jun	Jul	Aug	Sep	Oct	Nov	Dec
# Patient	87	84	86	80	81	78	78	78	78	79	80	76
# Hospital Admissions	5	12	5	11	9	10	7	6	6	11	7	8



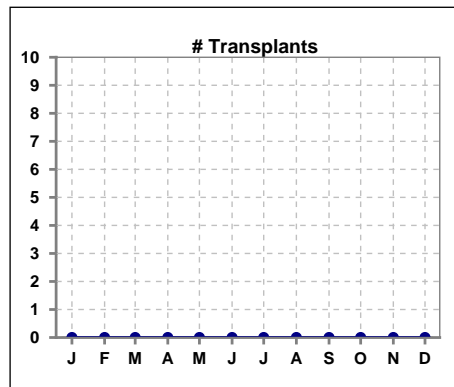
	Jan	Feb	Mar	Apr	May	Jun	Jul	Aug	Sep	Oct	Nov	Dec
# Patient	87	84	86	80	81	78	78	78	78	79	80	76
# Individual Deaths	4	0	1	1	1	2	1	2	1	0	1	5



	Jan	Feb	Mar	Apr	May	Jun	Jul	Aug	Sep	Oct	Nov	Dec
# Patient	87	84	86	80	81	78	78	78	78	79	80	76
# Missed Treatments	101	114	102	104	79	80	80	84	63	86	76	64



	Jan	Feb	Mar	Apr	May	Jun	Jul	Aug	Sep	Oct	Nov	Dec
# Patient	87	84	86	80	81	78	78	78	78	79	80	76
# Transplants	0	0	0	0	0	0	0	0	0	0	0	0



Methodology: a) All labs for 'Adequacy of Dialysis', 'Nutrition', 'Osteodystrophy', 'Anemia' and 'Diabetes' based on last value of month; b) BP's and #L processed are average of all values for month; c) Access data takes last access of month; d) Values for SGA and 'Infection Control' use most recent result.