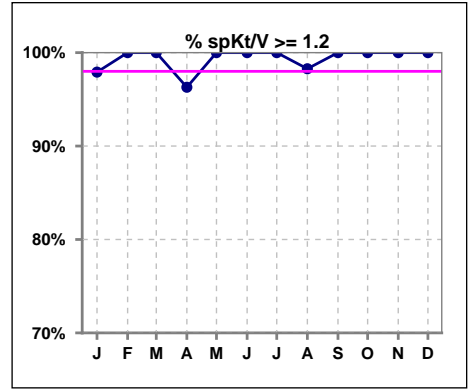
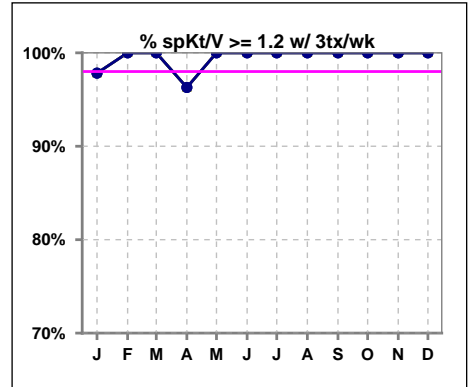


**I. ADEQUACY OF DIALYSIS**

	Jan	Feb	Mar	Apr	May	Jun	Jul	Aug	Sep	Oct	Nov	Dec
# spKt/V	48	50	52	54	58	56	57	58	56	57	58	57
# spKt/V >= 1.2	47	50	52	52	58	56	57	57	56	57	58	57
Pop. Mean	1.61	1.60	1.65	1.63	1.67	1.61	1.67	1.59	1.62	1.58	1.59	1.59
Std. Deviation	0.23	0.23	0.27	0.31	0.27	0.30	0.37	0.35	0.31	0.25	0.26	0.25
% spKt/V >= 1.2	98%	100%	100%	96%	100%	100%	100%	98%	100%	100%	100%	100%



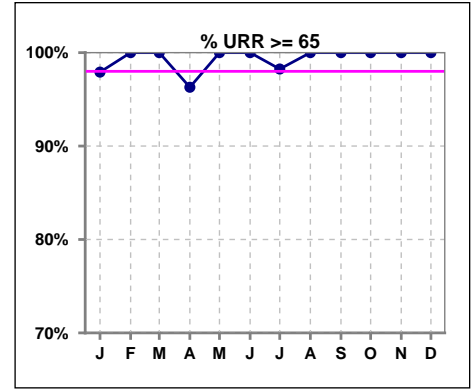
	Jan	Feb	Mar	Apr	May	Jun	Jul	Aug	Sep	Oct	Nov	Dec
# spKt/V w/ 3tx/wk	46	50	52	54	56	54	56	56	55	56	57	55
# spKt/V >= 1.2 w/3tx/wk	45	50	52	52	56	54	56	56	55	56	57	55
Pop. Mean	1.62	1.60	1.65	1.63	1.67	1.61	1.67	1.61	1.62	1.58	1.59	1.60
Std. Deviation	0.23	0.23	0.27	0.31	0.27	0.29	0.37	0.33	0.31	0.25	0.26	0.26
% >= 1.2 w/3tx/wk	98%	100%	100%	96%	100%	100%	100%	100%	100%	100%	100%	100%



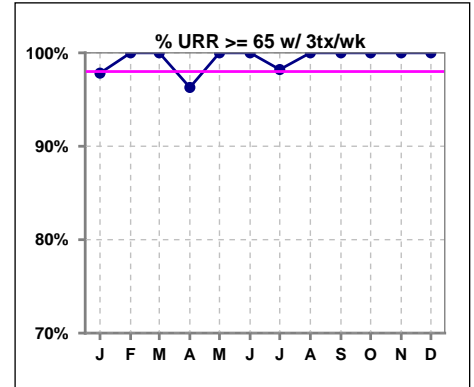
Methodology: a) All labs for 'Adequacy of Dialysis', 'Nutrition', 'Osteodystrophy', 'Anemia' and 'Diabetes' based on last value of month; b) BP's and #L processed are average of all values for month; c) Access data takes last access of month; d) Values for SGA and 'Infection Control' use most recent result.

**I. ADEQUACY OF DIALYSIS - CONT.**

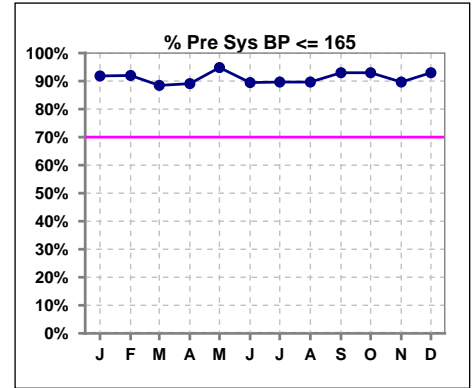
	Jan	Feb	Mar	Apr	May	Jun	Jul	Aug	Sep	Oct	Nov	Dec
# URR	48	50	52	54	58	56	57	58	57	57	58	57
# URR >= 65	47	50	52	52	58	56	56	58	57	57	58	57
Pop. Mean	75	75	76	75	76	75	76	75	75	74	75	75
Std. Deviation	4.66	4.76	5.35	5.86	4.92	5.34	6.16	6.07	5.54	5.01	4.95	5.03
% URR >= 65	98%	100%	100%	96%	100%	100%	98%	100%	100%	100%	100%	100%



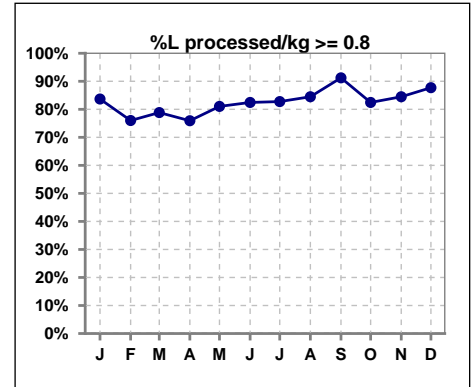
	Jan	Feb	Mar	Apr	May	Jun	Jul	Aug	Sep	Oct	Nov	Dec
# URR w/ 3tx/wk	46	50	52	54	56	54	56	56	55	56	57	55
# URR>=65 w/ 3tx/wk	45	50	52	52	56	54	55	56	55	56	57	55
Pop. Mean	75	75	76	75	76	75	76	75	75	75	75	75
Std. Deviation	4.71	4.76	5.35	5.86	4.97	5.26	6.14	6.02	5.62	5.03	4.98	5.09
% URR>=65 w/ 3tx/wk	98%	100%	100%	96%	100%	100%	98%	100%	100%	100%	100%	100%



	Jan	Feb	Mar	Apr	May	Jun	Jul	Aug	Sep	Oct	Nov	Dec
# Pre Sys BP	49	50	52	55	58	57	58	58	57	57	58	57
# Pre Sys BP <= 165	45	46	47	49	55	52	53	52	53	53	52	53
Pop. Mean	143	143	142	142	140	141	141	141	142	142	145	144
Std. Deviation	17.0	15.8	17.0	18.6	15.9	16.6	17.6	16.2	15.1	14.8	15.0	13.5
%Pre Sys BP <=165	92%	92%	88%	89%	95%	89%	90%	90%	93%	93%	90%	93%



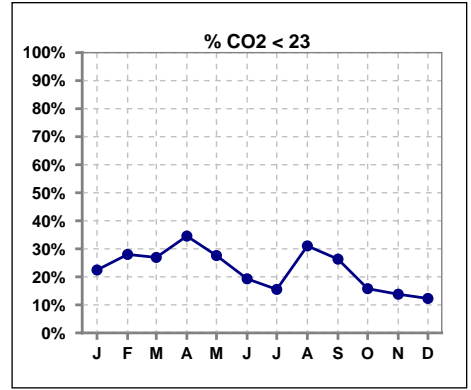
	Jan	Feb	Mar	Apr	May	Jun	Jul	Aug	Sep	Oct	Nov	Dec
# L processed/kg	49	50	52	54	58	57	58	58	57	57	58	57
# L processed/kg>=0.8	41	38	41	41	47	47	48	49	52	47	49	50
Pop. Mean	1	1	1	1	1	1	1	1	1	1	1	1
Std. Deviation	0.2	0.3	0.2	0.2	0.2	0.2	0.3	0.4	0.3	0.3	0.3	0.3
% L processed/kg>=0.8	84%	76%	79%	76%	81%	82%	83%	84%	91%	82%	84%	88%



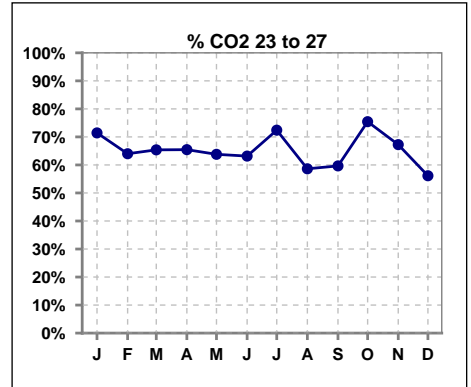
Methodology: a) All labs for 'Adequacy of Dialysis', 'Nutrition', 'Osteodystrophy', 'Anemia' and 'Diabetes' based on last value of month; b) BP's and #L processed are average of all values for month; c) Access data takes last access of month; d) Values for SGA and 'Infection Control' use most recent result.

**I. ADEQUACY OF DIALYSIS - CONT.**

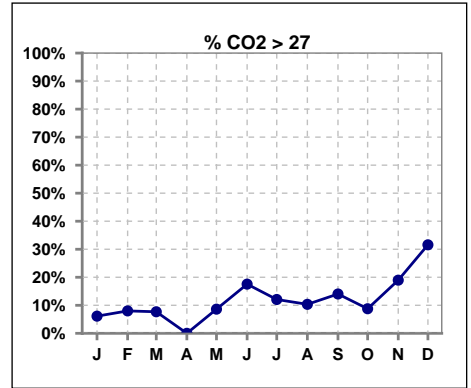
	Jan	Feb	Mar	Apr	May	Jun	Jul	Aug	Sep	Oct	Nov	Dec
# CO2	49	50	52	55	58	57	58	58	57	57	58	57
# CO2 < 23	11	14	14	19	16	11	9	18	15	9	8	7
Pop. Mean	24	24	24	23	24	25	25	24	24	24	25	26
Std. Deviation	2.41	2.38	2.43	2.56	2.61	3.19	3.08	2.96	2.93	2.48	2.96	2.94
% CO2 < 23	22%	28%	27%	35%	28%	19%	16%	31%	26%	16%	14%	12%



	Jan	Feb	Mar	Apr	May	Jun	Jul	Aug	Sep	Oct	Nov	Dec
# CO2	49	50	52	55	58	57	58	58	57	57	58	57
# CO2 23 to 27	35	32	34	36	37	36	42	34	34	43	39	32
Pop. Mean	24	24	24	23	24	25	25	24	24	24	25	26
Std. Deviation	2.41	2.38	2.43	2.56	2.61	3.19	3.08	2.96	2.93	2.48	2.96	2.94
% CO2 23 to 27	71%	64%	65%	65%	64%	63%	72%	59%	60%	75%	67%	56%



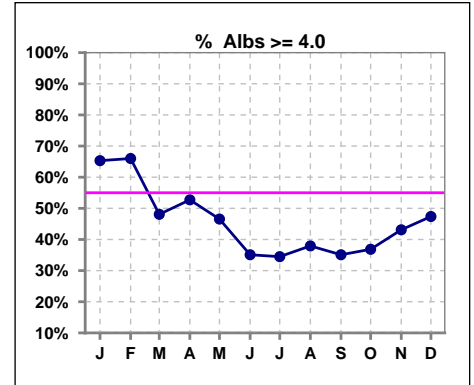
	Jan	Feb	Mar	Apr	May	Jun	Jul	Aug	Sep	Oct	Nov	Dec
# CO2	49	50	52	55	58	57	58	58	57	57	58	57
# CO2 > 27	3	4	4	0	5	10	7	6	8	5	11	18
Pop. Mean	24	24	24	23	24	25	25	24	24	24	25	26
Std. Deviation	2.41	2.38	2.43	2.56	2.61	3.19	3.08	2.96	2.93	2.48	2.96	2.94
% CO2 > 27	6%	8%	8%	0%	9%	18%	12%	10%	14%	9%	19%	32%



\*Albumin values use BCG method - as of July 2001

**II. NUTRITION**

	Jan	Feb	Mar	Apr	May	Jun	Jul	Aug	Sep	Oct	Nov	Dec
# Albumin	49	50	52	55	58	57	58	58	57	57	58	57
# Albumin >= 4.0	32	33	25	29	27	20	20	22	20	21	25	27
Pop. Mean	4.1	4.0	3.9	3.9	3.9	3.8	3.8	3.8	3.8	3.8	3.8	3.9
Std. Deviation	0.35	0.32	0.39	0.38	0.35	0.37	0.33	0.32	0.37	0.39	0.37	0.41
% Alb >= 4.0	65%	66%	48%	53%	47%	35%	34%	38%	35%	37%	43%	47%

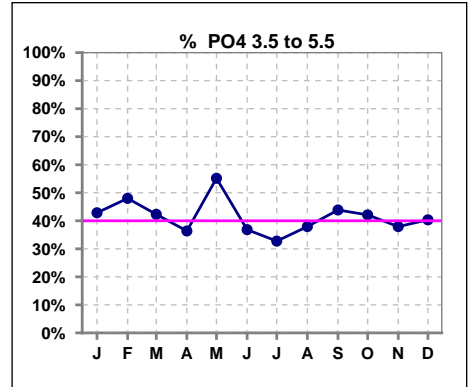


Methodology: a) All labs for 'Adequacy of Dialysis', 'Nutrition', 'Osteodystrophy', 'Anemia' and 'Diabetes' based on last value of month; b) BP's and #L processed are average of all values for month; c) Access data takes last access of month; d) Values for SGA and 'Infection Control' use most recent result.

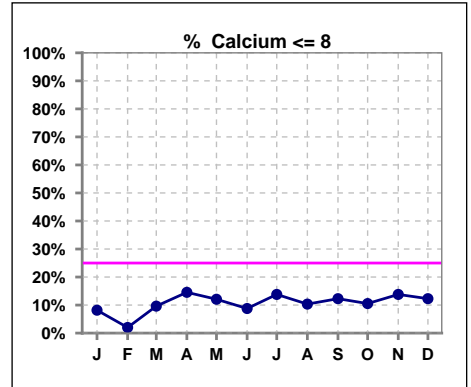
Lab methodology for PTH changed January 2012

**III. OSTEODYSTROPHY**

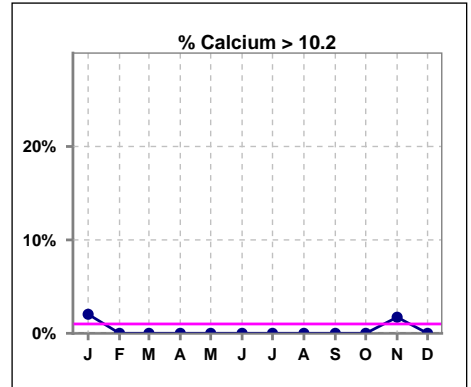
	Jan	Feb	Mar	Apr	May	Jun	Jul	Aug	Sep	Oct	Nov	Dec
# PO4	49	50	52	55	58	57	58	58	57	57	58	57
# PO4 3.5 to 5.5	21	24	22	20	32	21	19	22	25	24	22	23
Pop. Mean	6.0	5.5	5.8	6.1	5.5	5.8	6.2	5.9	5.7	5.8	6.0	6.1
Std. Deviation	1.60	1.60	1.67	1.90	1.91	1.37	1.70	1.61	1.48	1.63	1.72	1.79
% PO4 3.5 to 5.5	43%	48%	42%	36%	55%	37%	33%	38%	44%	42%	38%	40%



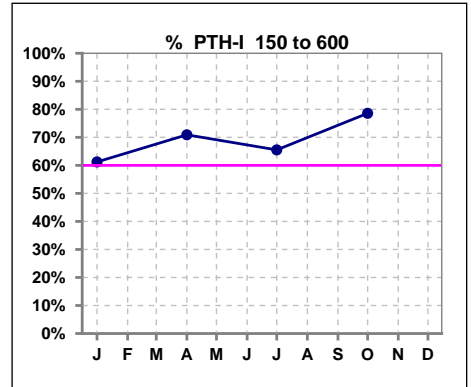
	Jan	Feb	Mar	Apr	May	Jun	Jul	Aug	Sep	Oct	Nov	Dec
# Calcium	49	50	52	55	58	57	58	58	57	57	58	57
# Calcium <= 8	4	1	5	8	7	5	8	6	7	6	8	7
Pop. Mean	9.1	9.2	9.0	9.0	9.0	8.9	8.8	8.9	8.8	8.9	8.9	8.7
Std. Deviation	0.67	0.60	0.65	0.72	0.71	0.61	0.67	0.67	0.67	0.66	0.71	0.71
% Calcium <= 8	8%	2%	10%	15%	12%	9%	14%	10%	12%	11%	14%	12%



	Jan	Feb	Mar	Apr	May	Jun	Jul	Aug	Sep	Oct	Nov	Dec
# Calcium	49	50	52	55	58	57	58	58	57	57	58	57
# Calcium > 10.2	1	0	0	0	0	0	0	0	0	0	1	0
Pop. Mean	9.1	9.2	9.0	9.0	9.0	8.9	8.8	8.9	8.8	8.9	8.9	8.7
Std. Deviation	0.67	0.60	0.65	0.72	0.71	0.61	0.67	0.67	0.67	0.66	0.71	0.71
% Calcium > 10.2	2%	0%	0%	0%	0%	0%	0%	0%	0%	0%	2%	0%



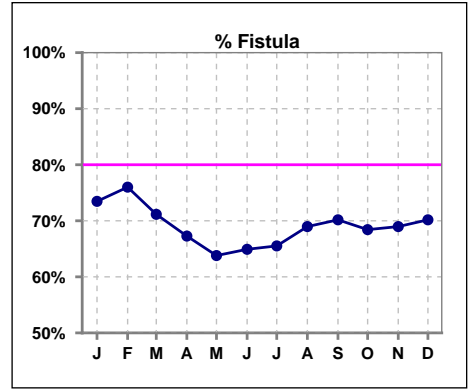
	Jan	Feb	Mar	Apr	May	Jun	Jul	Aug	Sep	Oct	Nov	Dec
# PTH-I	49			55			58			56		
# PTH-I 150 to 600	30			39			38			44		
Pop. Mean	419			419			470			449		
Std. Deviation	284			286			306			277		
% PTH-I 150 to 600	61%			71%			66%			79%		



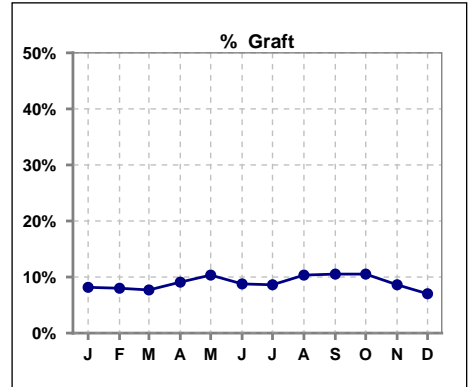
Methodology: a) All labs for 'Adequacy of Dialysis', 'Nutrition', 'Osteodystrophy', 'Anemia' and 'Diabetes' based on last value of month; b) BP's and #L processed are average of all values for month; c) Access data takes last access of month; d) Values for SGA and 'Infection Control' use most recent result.

**IV. ACCESS**

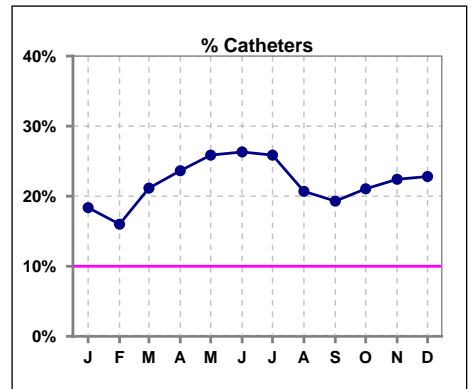
	Jan	Feb	Mar	Apr	May	Jun	Jul	Aug	Sep	Oct	Nov	Dec
# Access	49	50	52	55	58	57	58	58	57	57	58	57
# Fistula	36	38	37	37	37	37	38	40	40	39	40	40
% Fistula	73%	76%	71%	67%	64%	65%	66%	69%	70%	68%	69%	70%



	Jan	Feb	Mar	Apr	May	Jun	Jul	Aug	Sep	Oct	Nov	Dec
# Access	49	50	52	55	58	57	58	58	57	57	58	57
# Graft	4	4	4	5	6	5	5	6	6	6	5	4
% Graft	8%	8%	8%	9%	10%	9%	9%	10%	11%	11%	9%	7%



	Jan	Feb	Mar	Apr	May	Jun	Jul	Aug	Sep	Oct	Nov	Dec
# Access	49	50	52	55	58	57	58	58	57	57	58	57
# Catheters	9	8	11	13	15	15	15	12	11	12	13	13
% Catheters	18%	16%	21%	24%	26%	26%	26%	21%	19%	21%	22%	23%



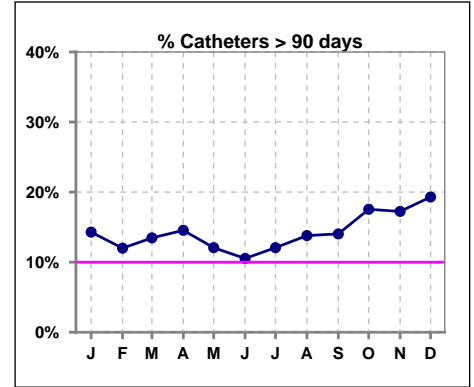
Methodology: a) All labs for 'Adequacy of Dialysis', 'Nutrition', 'Osteodystrophy', 'Anemia' and 'Diabetes' based on last value of month; b) BP's and #L processed are average of all values for month; c) Access data takes last access of month; d) Values for SGA and 'Infection Control' use most recent result.

**IV. ACCESS - CONT.**

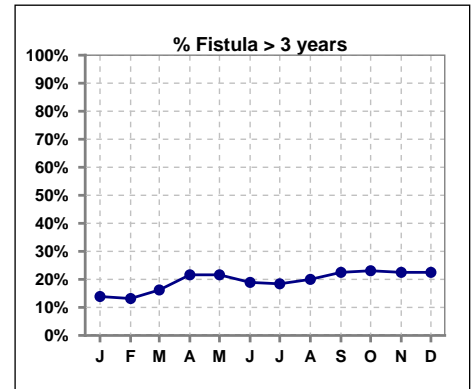
**Catheters > 90 days**

	Jan	Feb	Mar	Apr	May	Jun	Jul	Aug	Sep	Oct	Nov	Dec
# Access	49	50	52	55	58	57	58	58	57	57	58	57
# Catheters	7	6	7	8	7	6	7	8	8	10	10	11
% Catheters	14%	12%	13%	15%	12%	11%	12%	14%	14%	18%	17%	19%

Definition: Catheter in use on last treatment of the month



	Jan	Feb	Mar	Apr	May	Jun	Jul	Aug	Sep	Oct	Nov	Dec
# Fistula	36	38	37	37	37	37	38	40	40	39	40	40
# Fistula > 3 yrs	5	5	6	8	8	7	7	8	9	9	9	9
% Fistula > 3 yrs	14%	13%	16%	22%	22%	19%	18%	20%	23%	23%	23%	23%

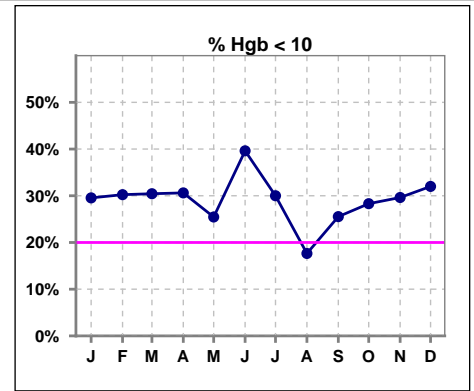


Methodology: a) All labs for 'Adequacy of Dialysis', 'Nutrition', 'Osteodystrophy', 'Anemia' and 'Diabetes' based on last value of month; b) BP's and #L processed are average of all values for month; c) Access data takes last access of month; d) Values for SGA and 'Infection Control' use most recent result.

**V. ANEMIA**

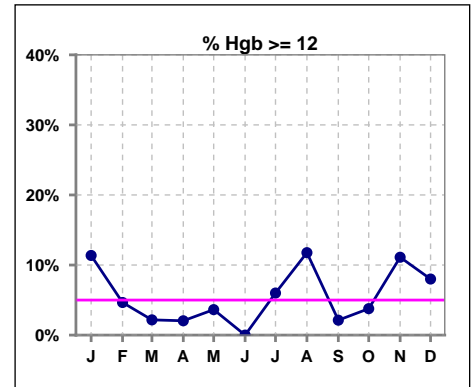
	Jan	Feb	Mar	Apr	May	Jun	Jul	Aug	Sep	Oct	Nov	Dec
# Hgb	44	43	46	49	55	53	50	51	47	53	54	50
# Hgb < 10	13	13	14	15	14	21	15	9	12	15	16	16
Pop. Mean	10.5	10.5	10.4	10.5	10.4	10.2	10.3	10.7	10.5	10.5	10.7	10.5
Std. Deviation	1.4	1.4	0.8	1.3	1.1	1.3	1.3	1.3	1.0	1.2	1.4	1.3
% Hgb < 10	30%	30%	30%	31%	25%	40%	30%	18%	26%	28%	30%	32%

Note: Excludes patients who received no ESA in month.



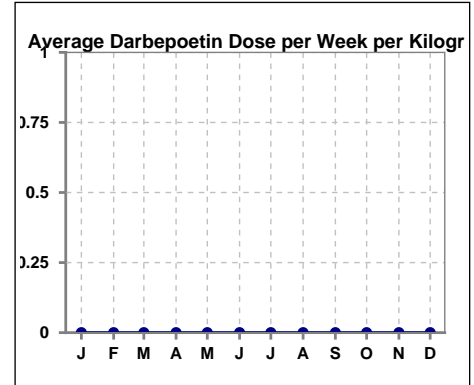
	Jan	Feb	Mar	Apr	May	Jun	Jul	Aug	Sep	Oct	Nov	Dec
# Hgb	44	43	46	49	55	53	50	51	47	53	54	50
# Hgb >= 12	5	2	1	1	2	0	3	6	1	2	6	4
Pop. Mean	10.5	10.5	10.4	10.5	10.4	10.2	10.3	10.7	10.5	10.5	10.7	10.5
Std. Deviation	1.4	1.4	0.8	1.3	1.1	1.3	1.3	1.3	1.0	1.2	1.4	1.3
% Hgb >= 12	11%	5%	2%	2%	4%	0%	6%	12%	2%	4%	11%	8%

Note: Excludes patients who received no ESA in month.



**Average Darbepoetin Dose per Week per Kilogram**

	Jan	Feb	Mar	Apr	May	Jun	Jul	Aug	Sep	Oct	Nov	Dec
# Average Darbepoetin	0	0	0	0	0	0	0	0	0	0	0	0

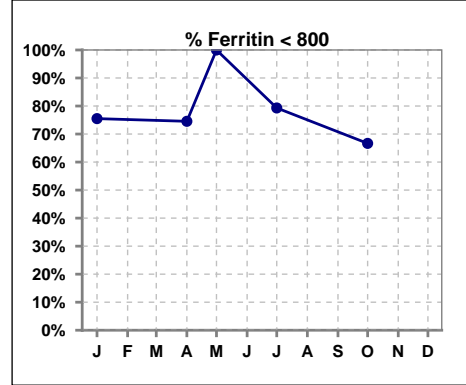




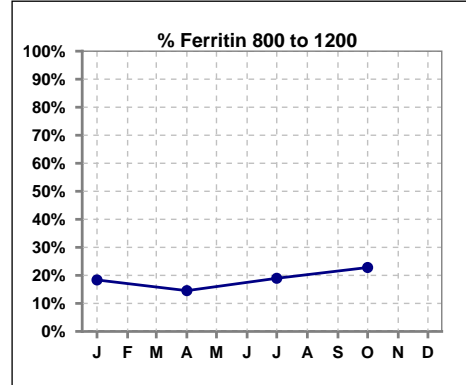
**V. ANEMIA - CONT.**

**Iron Profile**

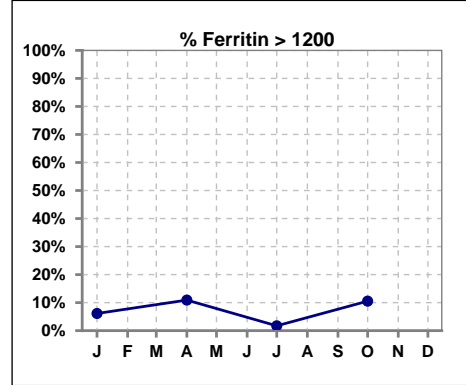
	Jan	Feb	Mar	Apr	May	Jun	Jul	Aug	Sep	Oct	Nov	Dec
# Ferritin	49			55	3		58			57		
# Ferritin < 800	37			41	3		46			38		
Pop. Mean	540			531	249		469			580		
Std. Deviation	390			436	349		371			446		
<b>% Ferritin &lt; 800</b>	<b>76%</b>			<b>75%</b>	<b>100%</b>		<b>79%</b>			<b>67%</b>		



	Jan	Feb	Mar	Apr	May	Jun	Jul	Aug	Sep	Oct	Nov	Dec
# Ferritin	49			55	3		58			57		
# Ferritin 800 to 1200	9			8			11			13		
Pop. Mean	540			531	249		469			580		
Std. Deviation	390			436	349		371			446		
<b>% Ferritin 800 to 1200</b>	<b>18%</b>			<b>15%</b>			<b>19%</b>			<b>23%</b>		



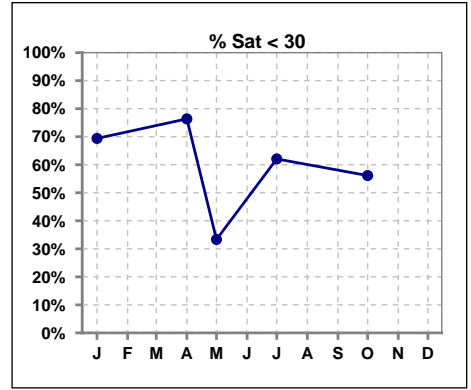
	Jan	Feb	Mar	Apr	May	Jun	Jul	Aug	Sep	Oct	Nov	Dec
# Ferritin	49			55	3		58			57		
# Ferritin > 1200	3			6			1			6		
Pop. Mean	540			531	249		469			580		
Std. Deviation	390			436	349		371			446		
<b>% Ferritin &gt; 1200</b>	<b>6%</b>			<b>11%</b>			<b>2%</b>			<b>11%</b>		



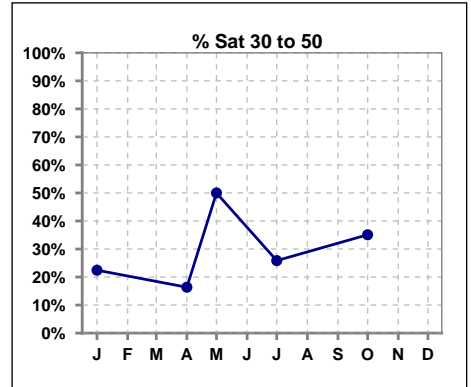
Methodology: a) All labs for 'Adequacy of Dialysis', 'Nutrition', 'Osteodystrophy', 'Anemia' and 'Diabetes' based on last value of month; b) BP's and #L processed are average of all values for month; c) Access data takes last access of month; d) Values for SGA and 'Infection Control' use most recent result.

**V. ANEMIA - CONT.**

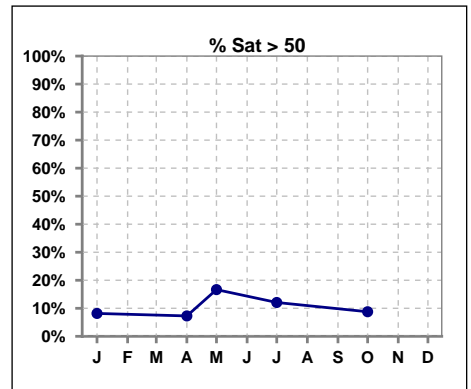
	Jan	Feb	Mar	Apr	May	Jun	Jul	Aug	Sep	Oct	Nov	Dec
# % Sat	49			55	6		58			57		
# % Sat < 30	34			42	2		36			32		
Pop. Mean	29			25	37		30			31		
Std. Deviation	18			13	25		14			17		
<b>% % Sat &lt; 30</b>	<b>69%</b>			<b>76%</b>	<b>33%</b>		<b>62%</b>			<b>56%</b>		



	Jan	Feb	Mar	Apr	May	Jun	Jul	Aug	Sep	Oct	Nov	Dec
# % Sat	49			55	6		58			57		
# % Sat 30 to 50	11			9	3		15			20		
Pop. Mean	29			25	37		30			31		
Std. Deviation	18			13	25		14			17		
<b>% % Sat 30 to 50</b>	<b>22%</b>			<b>16%</b>	<b>50%</b>		<b>26%</b>			<b>35%</b>		

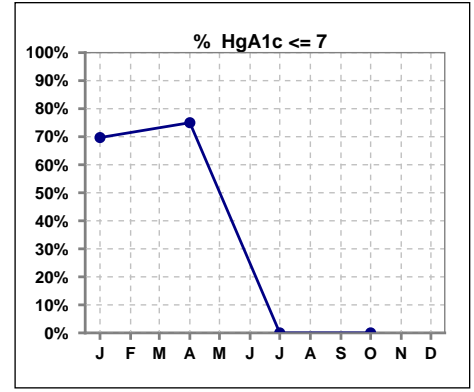


	Jan	Feb	Mar	Apr	May	Jun	Jul	Aug	Sep	Oct	Nov	Dec
# % Sat	49			55	6		58			57		
# % Sat > 50	4			4	1		7			5		
Pop. Mean	29			25	37		30			31		
Std. Deviation	18			13	25		14			17		
<b>% % Sat &gt; 50</b>	<b>8%</b>			<b>7%</b>	<b>17%</b>		<b>12%</b>			<b>9%</b>		



**VI. Diabetes**

	Jan	Feb	Mar	Apr	May	Jun	Jul	Aug	Sep	Oct	Nov	Dec
# HgA1c	33			36			0			0		
# HgA1c <= 7	23			27			0			0		
Pop. Mean	6.5			6.4			0			0		
Std. Deviation	1.82			1.48			0			0		
<b>% HgA1c &lt;= 7</b>	<b>70%</b>			<b>75%</b>			<b>0%</b>			<b>0%</b>		

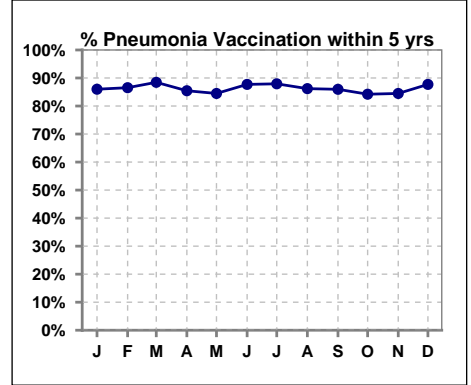


Methodology: a) All labs for 'Adequacy of Dialysis', 'Nutrition', 'Osteodystrophy', 'Anemia' and 'Diabetes' based on last value of month; b) BP's and #L processed are average of all values for month; c) Access data takes last access of month; d) Values for SGA and 'Infection Control' use most recent result.

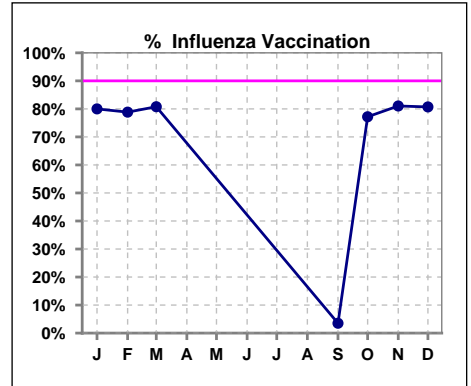
**VII. Infection Control**

**Pneumonia vaccination within the past five years**

	Jan	Feb	Mar	Apr	May	Jun	Jul	Aug	Sep	Oct	Nov	Dec
# Patient	50	52	52	55	58	57	58	58	57	57	58	57
# Pneumonia	43	45	46	47	49	50	51	50	49	48	49	50
% Pneumonia	86%	87%	88%	85%	84%	88%	88%	86%	86%	84%	84%	88%



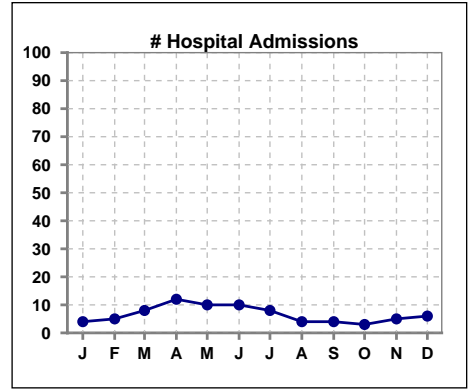
	Jan	Feb	Mar	Apr	May	Jun	Jul	Aug	Sep	Oct	Nov	Dec
# Patient	50	52	52						57	57	58	57
# Influenza	40	41	42						2	44	47	46
% Influenza	80%	79%	81%						4%	77%	81%	81%



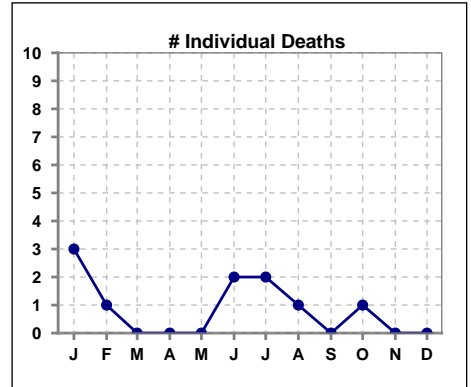
Methodology: a) All labs for 'Adequacy of Dialysis', 'Nutrition', 'Osteodystrophy', 'Anemia' and 'Diabetes' based on last value of month; b) BP's and #L processed are average of all values for month; c) Access data takes last access of month; d) Values for SGA and 'Infection Control' use most recent result.

**VIII. Outcome measures**

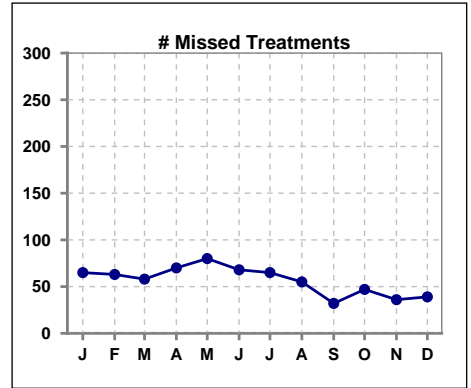
	Jan	Feb	Mar	Apr	May	Jun	Jul	Aug	Sep	Oct	Nov	Dec
# Patient	50	52	52	55	58	57	58	58	57	57	58	57
# Hospital Admissions	4	5	8	12	10	10	8	4	4	3	5	6



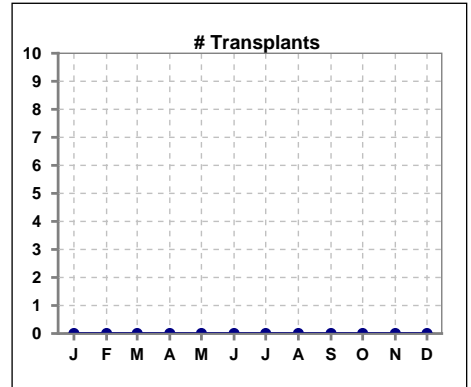
	Jan	Feb	Mar	Apr	May	Jun	Jul	Aug	Sep	Oct	Nov	Dec
# Patient	50	52	52	55	58	57	58	58	57	57	58	57
# Individual Deaths	3	1	0	0	0	2	2	1	0	1	0	0



	Jan	Feb	Mar	Apr	May	Jun	Jul	Aug	Sep	Oct	Nov	Dec
# Patient	50	52	52	55	58	57	58	58	57	57	58	57
# Missed Treatments	65	63	58	70	80	68	65	55	32	47	36	39



	Jan	Feb	Mar	Apr	May	Jun	Jul	Aug	Sep	Oct	Nov	Dec
# Patient	50	52	52	55	58	57	58	58	57	57	58	57
# Transplants	0	0	0	0	0	0	0	0	0	0	0	0



Methodology: a) All labs for 'Adequacy of Dialysis', 'Nutrition', 'Osteodystrophy', 'Anemia' and 'Diabetes' based on last value of month; b) BP's and #L processed are average of all values for month; c) Access data takes last access of month; d) Values for SGA and 'Infection Control' use most recent result.