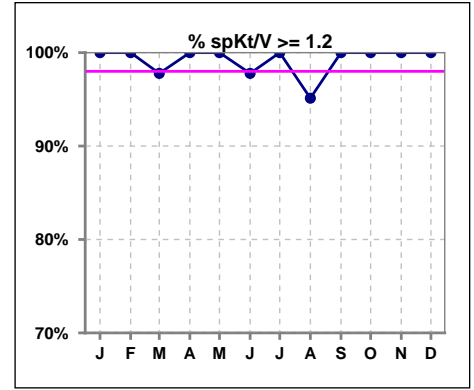
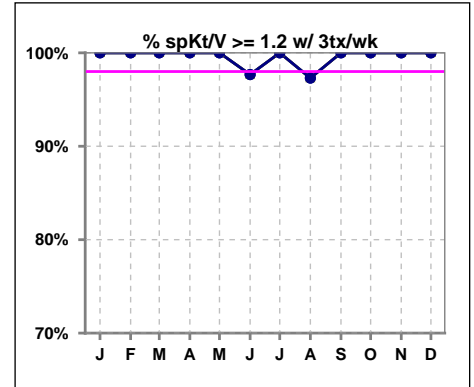


I. ADEQUACY OF DIALYSIS

	Jan	Feb	Mar	Apr	May	Jun	Jul	Aug	Sep	Oct	Nov	Dec
# spKt/V	45	45	45	44	43	45	43	41	41	38	36	35
# spKt/V >= 1.2	45	45	44	44	43	44	43	39	41	38	36	35
Pop. Mean	1.56	1.59	1.57	1.61	1.59	1.53	1.50	1.47	1.47	1.53	1.55	1.52
Std. Deviation	0.21	0.24	0.27	0.24	0.25	0.24	0.21	0.24	0.19	0.24	0.25	0.23
% spKt/V >= 1.2	100%	100%	98%	100%	100%	98%	100%	95%	100%	100%	100%	100%



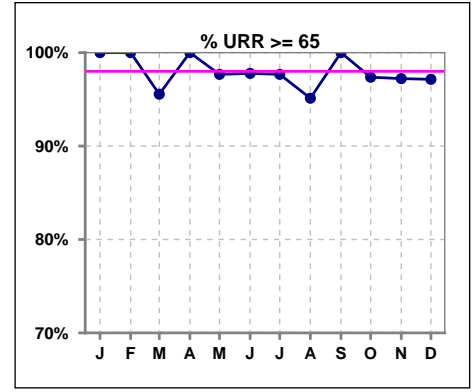
	Jan	Feb	Mar	Apr	May	Jun	Jul	Aug	Sep	Oct	Nov	Dec
# spKt/V w/ 3tx/wk	44	44	43	42	40	43	40	37	38	37	35	34
# spKt/V >= 1.2 w/3tx/wk	44	44	43	42	40	42	40	36	38	37	35	34
Pop. Mean	1.55	1.59	1.58	1.61	1.60	1.53	1.50	1.49	1.47	1.52	1.54	1.51
Std. Deviation	0.21	0.24	0.27	0.24	0.24	0.24	0.21	0.25	0.18	0.24	0.25	0.23
% >= 1.2 w/3tx/wk	100%	100%	100%	100%	100%	98%	100%	97%	100%	100%	100%	100%



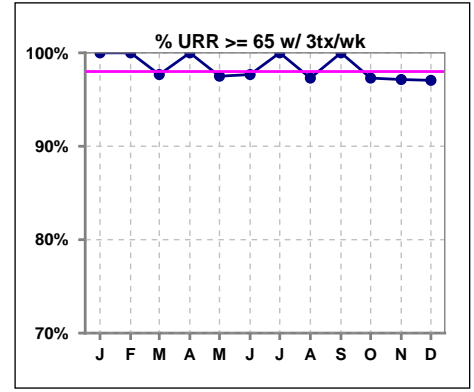
Methodology: a) All labs for 'Adequacy of Dialysis', 'Nutrition', 'Osteodystrophy', 'Anemia' and 'Diabetes' based on last value of month; b) BP's and #L processed are average of all values for month; c) Access data takes last access of month; d) Values for SGA and 'Infection Control' use most recent result.

I. ADEQUACY OF DIALYSIS - CONT.

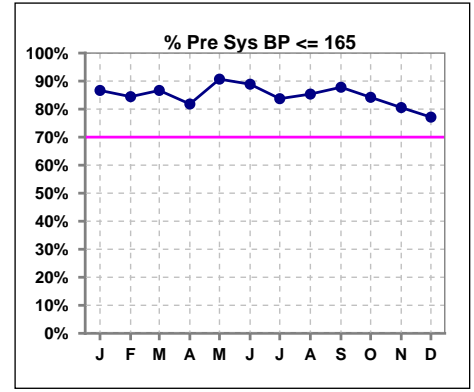
	Jan	Feb	Mar	Apr	May	Jun	Jul	Aug	Sep	Oct	Nov	Dec
# URR	45	45	45	44	43	45	43	41	41	38	36	35
# URR >= 65	45	45	43	44	42	44	42	39	41	37	35	34
Pop. Mean	74	75	74	75	75	73	73	72	72	73	74	73
Std. Deviation	4.28	4.88	5.66	4.71	5.34	4.88	4.53	5.43	4.31	4.89	5.35	4.67
% URR >= 65	100%	100%	96%	100%	98%	98%	98%	95%	100%	97%	97%	97%



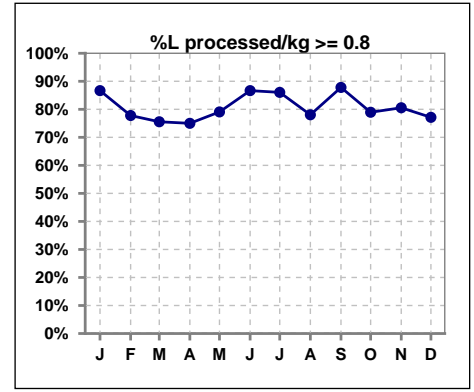
	Jan	Feb	Mar	Apr	May	Jun	Jul	Aug	Sep	Oct	Nov	Dec
# URR w/ 3tx/wk	44	44	43	42	40	43	40	37	38	37	35	34
# URR>=65 w/ 3tx/wk	44	44	42	42	39	42	40	36	38	36	34	33
Pop. Mean	74	75	74	75	75	73	73	73	72	73	74	73
Std. Deviation	4.29	4.89	5.40	4.72	5.12	4.83	4.36	5.36	4.10	4.91	5.42	4.70
% URR>=65 w/ 3tx/wk	100%	100%	98%	100%	98%	98%	100%	97%	100%	97%	97%	97%



	Jan	Feb	Mar	Apr	May	Jun	Jul	Aug	Sep	Oct	Nov	Dec
# Pre Sys BP	45	45	45	44	43	45	43	41	41	38	36	35
# Pre Sys BP <= 165	39	38	40	36	40	40	39	35	36	32	29	27
Pop. Mean	146	146	145	144	142	143	143	146	144	145	149	150
Std. Deviation	18.9	19.4	18.7	20.5	19.9	18.6	20.5	22.1	20.9	18.2	20.1	18.9
% Pre Sys BP <= 165	87%	84%	87%	82%	91%	89%	84%	85%	88%	84%	81%	77%



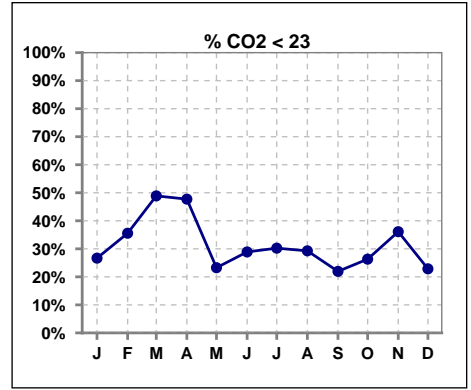
	Jan	Feb	Mar	Apr	May	Jun	Jul	Aug	Sep	Oct	Nov	Dec
# L processed/kg	45	45	45	44	43	45	43	41	41	38	36	35
# L processed/kg >= 0.8	39	35	34	33	34	39	37	32	36	30	29	27
Pop. Mean	1	1	1	1	1	1	1	1	1	1	1	1
Std. Deviation	0.2	0.3	0.2	0.2	0.2	0.2	0.2	0.3	0.2	0.3	0.3	0.2
% L processed/kg >= 0.8	87%	78%	76%	75%	79%	87%	86%	78%	88%	79%	81%	77%



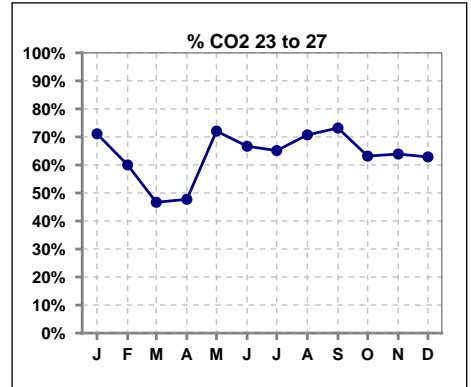
Methodology: a) All labs for 'Adequacy of Dialysis', 'Nutrition', 'Osteodystrophy', 'Anemia' and 'Diabetes' based on last value of month; b) BP's and #L processed are average of all values for month; c) Access data takes last access of month; d) Values for SGA and 'Infection Control' use most recent result.

I. ADEQUACY OF DIALYSIS - CONT.

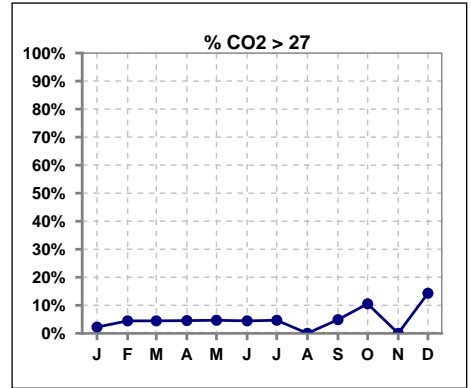
	Jan	Feb	Mar	Apr	May	Jun	Jul	Aug	Sep	Oct	Nov	Dec
# CO2	45	45	45	44	43	45	43	41	41	38	36	35
# CO2 < 23	12	16	22	21	10	13	13	12	9	10	13	8
Pop. Mean	24	23	23	23	24	24	23	23	24	24	24	24
Std. Deviation	2.63	2.64	2.18	2.58	2.55	2.93	2.64	2.19	2.23	3.07	2.36	2.96
% CO2 < 23	27%	36%	49%	48%	23%	29%	30%	29%	22%	26%	36%	23%



	Jan	Feb	Mar	Apr	May	Jun	Jul	Aug	Sep	Oct	Nov	Dec
# CO2	45	45	45	44	43	45	43	41	41	38	36	35
# CO2 23 to 27	32	27	21	21	31	30	28	29	30	24	23	22
Pop. Mean	24	23	23	23	24	24	23	23	24	24	24	24
Std. Deviation	2.63	2.64	2.18	2.58	2.55	2.93	2.64	2.19	2.23	3.07	2.36	2.96
% CO2 23 to 27	71%	60%	47%	48%	72%	67%	65%	71%	73%	63%	64%	63%



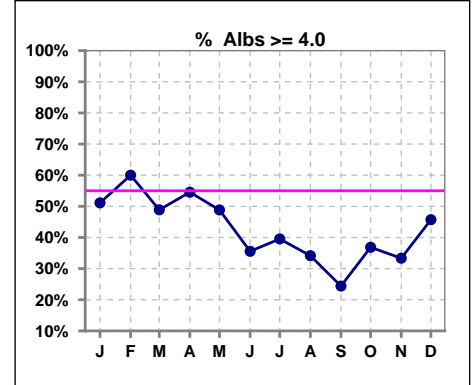
	Jan	Feb	Mar	Apr	May	Jun	Jul	Aug	Sep	Oct	Nov	Dec
# CO2	45	45	45	44	43	45	43	41	41	38	36	35
# CO2 > 27	1	2	2	2	2	2	2	0	2	4	0	5
Pop. Mean	24	23	23	23	24	24	23	23	24	24	24	24
Std. Deviation	2.63	2.64	2.18	2.58	2.55	2.93	2.64	2.19	2.23	3.07	2.36	2.96
% CO2 > 27	2%	4%	4%	5%	5%	4%	5%	0%	5%	11%	0%	14%



*Albumin values use BCG method - as of July 2001

II. NUTRITION

	Jan	Feb	Mar	Apr	May	Jun	Jul	Aug	Sep	Oct	Nov	Dec
# Albumin	45	45	45	44	43	45	43	41	41	38	36	35
# Albumin >= 4.0	23	27	22	24	21	16	17	14	10	14	12	16
Pop. Mean	4.0	4.0	3.9	3.9	3.9	3.8	3.8	3.8	3.7	3.8	3.8	3.9
Std. Deviation	0.27	0.29	0.33	0.34	0.34	0.37	0.34	0.31	0.31	0.33	0.32	0.31
% Alb >= 4.0	51%	60%	49%	55%	49%	36%	40%	34%	24%	37%	33%	46%

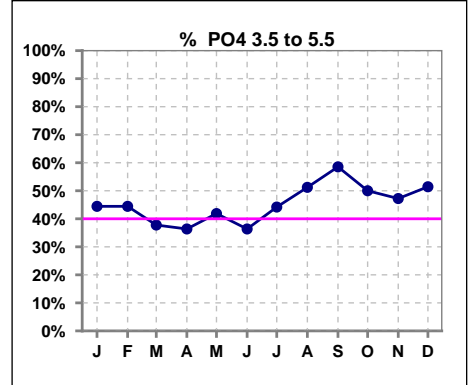


Methodology: a) All labs for 'Adequacy of Dialysis', 'Nutrition', 'Osteodystrophy', 'Anemia' and 'Diabetes' based on last value of month; b) BP's and #L processed are average of all values for month; c) Access data takes last access of month; d) Values for SGA and 'Infection Control' use most recent result.

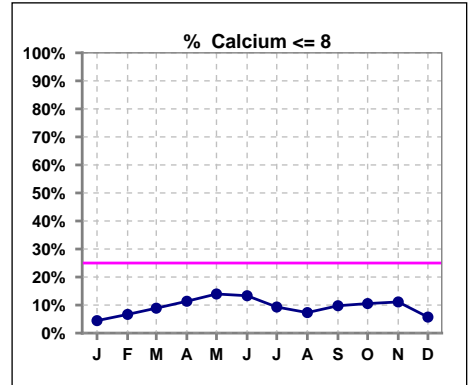
Lab methodology for PTH changed January 2012

III. OSTEODYSTROPHY

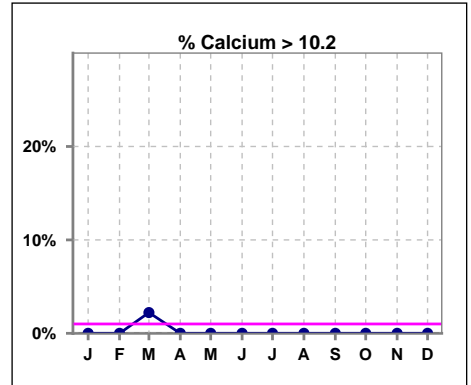
	Jan	Feb	Mar	Apr	May	Jun	Jul	Aug	Sep	Oct	Nov	Dec
# PO4	45	45	45	44	43	44	43	41	41	38	36	35
# PO4 3.5 to 5.5	20	20	17	16	18	16	19	21	24	19	17	18
Pop. Mean	5.7	5.9	6.2	6.2	5.8	6.1	5.9	5.7	5.5	5.7	5.9	5.9
Std. Deviation	1.47	1.77	1.81	1.86	1.54	1.75	1.46	1.20	1.22	1.45	1.51	1.59
% PO4 3.5 to 5.5	44%	44%	38%	36%	42%	36%	44%	51%	59%	50%	47%	51%



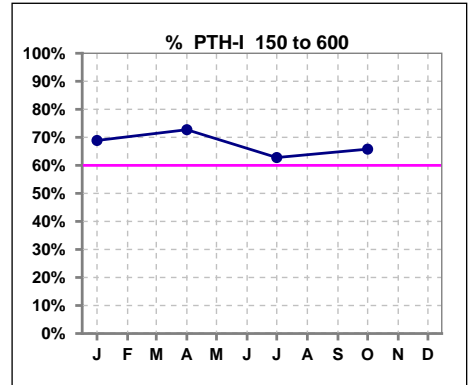
	Jan	Feb	Mar	Apr	May	Jun	Jul	Aug	Sep	Oct	Nov	Dec
# Calcium	45	45	45	44	43	45	43	41	41	38	36	35
# Calcium <= 8	2	3	4	5	6	6	4	3	4	4	4	2
Pop. Mean	9.1	9.3	9.2	9.1	8.9	8.8	8.9	8.9	8.9	8.8	8.8	8.9
Std. Deviation	0.61	0.65	0.65	0.82	0.77	0.75	0.68	0.70	0.70	0.66	0.61	0.60
% Calcium <= 8	4%	7%	9%	11%	14%	13%	9%	7%	10%	11%	11%	6%



	Jan	Feb	Mar	Apr	May	Jun	Jul	Aug	Sep	Oct	Nov	Dec
# Calcium	45	45	45	44	43	45	43	41	41	38	36	35
# Calcium > 10.2	0	0	1	0	0	0	0	0	0	0	0	0
Pop. Mean	9.1	9.3	9.2	9.1	8.9	8.8	8.9	8.9	8.9	8.8	8.8	8.9
Std. Deviation	0.61	0.65	0.65	0.82	0.77	0.75	0.68	0.70	0.70	0.66	0.61	0.60
% Calcium > 10.2	0%	0%	2%	0%	0%	0%	0%	0%	0%	0%	0%	0%



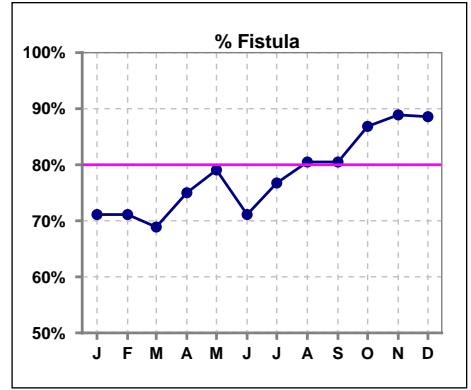
	Jan	Feb	Mar	Apr	May	Jun	Jul	Aug	Sep	Oct	Nov	Dec
# PTH-I	45			44			43			38		
# PTH-I 150 to 600	31			32			27			25		
Pop. Mean	509			536			579			544		
Std. Deviation	547			662			643			561		
% PTH-I 150 to 600	69%			73%			63%			66%		



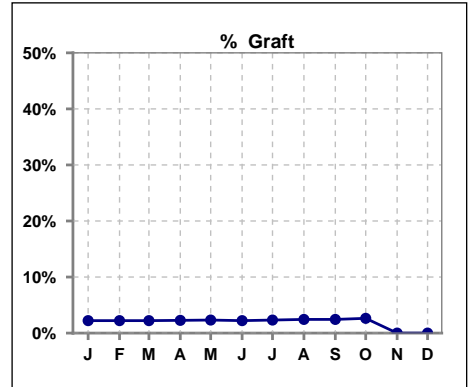
Methodology: a) All labs for 'Adequacy of Dialysis', 'Nutrition', 'Osteodystrophy', 'Anemia' and 'Diabetes' based on last value of month; b) BP's and #L processed are average of all values for month; c) Access data takes last access of month; d) Values for SGA and 'Infection Control' use most recent result.

IV. ACCESS

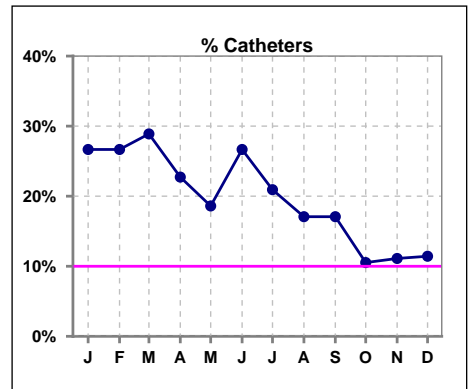
	Jan	Feb	Mar	Apr	May	Jun	Jul	Aug	Sep	Oct	Nov	Dec
# Access	45	45	45	44	43	45	43	41	41	38	36	35
# Fistula	32	32	31	33	34	32	33	33	33	33	32	31
% Fistula	71%	71%	69%	75%	79%	71%	77%	80%	80%	87%	89%	89%



	Jan	Feb	Mar	Apr	May	Jun	Jul	Aug	Sep	Oct	Nov	Dec
# Access	45	45	45	44	43	45	43	41	41	38	36	35
# Graft	1	1	1	1	1	1	1	1	1	1	0	0
% Graft	2%	2%	2%	2%	2%	2%	2%	2%	2%	3%	0%	0%



	Jan	Feb	Mar	Apr	May	Jun	Jul	Aug	Sep	Oct	Nov	Dec
# Access	45	45	45	44	43	45	43	41	41	38	36	35
# Catheters	12	12	13	10	8	12	9	7	7	4	4	4
% Catheters	27%	27%	29%	23%	19%	27%	21%	17%	17%	11%	11%	11%



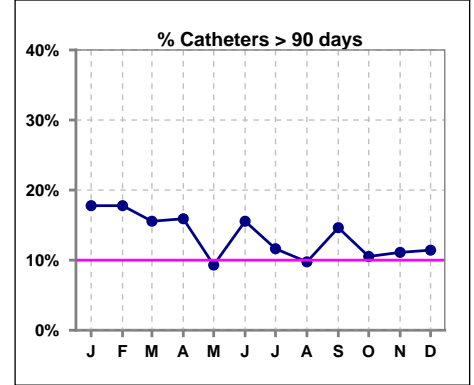
Methodology: a) All labs for 'Adequacy of Dialysis', 'Nutrition', 'Osteodystrophy', 'Anemia' and 'Diabetes' based on last value of month; b) BP's and #L processed are average of all values for month; c) Access data takes last access of month; d) Values for SGA and 'Infection Control' use most recent result.

IV. ACCESS - CONT.

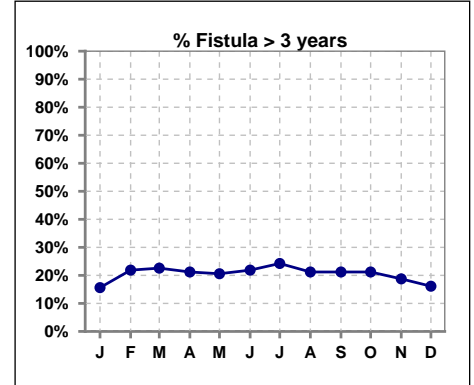
Catheters > 90 days

	Jan	Feb	Mar	Apr	May	Jun	Jul	Aug	Sep	Oct	Nov	Dec
# Access	45	45	45	44	43	45	43	41	41	38	36	35
# Catheters	8	8	7	7	4	7	5	4	6	4	4	4
% Catheters	18%	18%	16%	16%	9%	16%	12%	10%	15%	11%	11%	11%

Definition: Catheter in use on last treatment of the month



	Jan	Feb	Mar	Apr	May	Jun	Jul	Aug	Sep	Oct	Nov	Dec
# Fistula	32	32	31	33	34	32	33	33	33	33	32	31
# Fistula > 3 yrs	5	7	7	7	7	7	8	7	7	7	6	5
% Fistula > 3 yrs	16%	22%	23%	21%	21%	22%	24%	21%	21%	21%	19%	16%

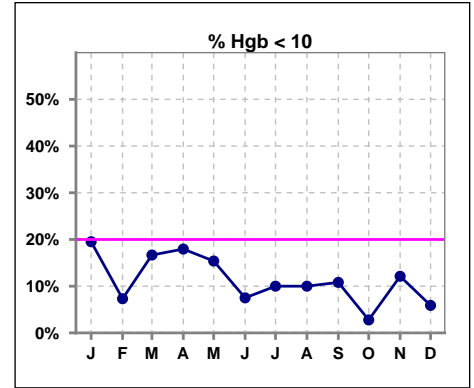


Methodology: a) All labs for 'Adequacy of Dialysis', 'Nutrition', 'Osteodystrophy', 'Anemia' and 'Diabetes' based on last value of month; b) BP's and #L processed are average of all values for month; c) Access data takes last access of month; d) Values for SGA and 'Infection Control' use most recent result.

V. ANEMIA

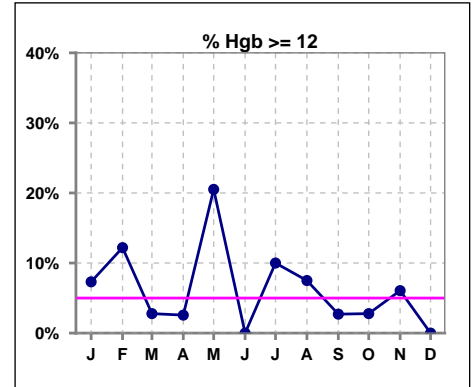
	Jan	Feb	Mar	Apr	May	Jun	Jul	Aug	Sep	Oct	Nov	Dec
# Hgb	41	41	36	39	39	40	40	40	37	36	33	34
# Hgb < 10	8	3	6	7	6	3	4	4	4	1	4	2
Pop. Mean	10.7	11.1	11.0	10.6	11.0	10.8	11.1	11.0	11.1	11.0	11.1	10.9
Std. Deviation	1.0	0.8	0.9	0.9	1.2	0.7	0.8	0.9	0.8	0.6	0.8	0.6
% Hgb < 10	20%	7%	17%	18%	15%	8%	10%	10%	11%	3%	12%	6%

Note: Excludes patients who received no ESA in month.



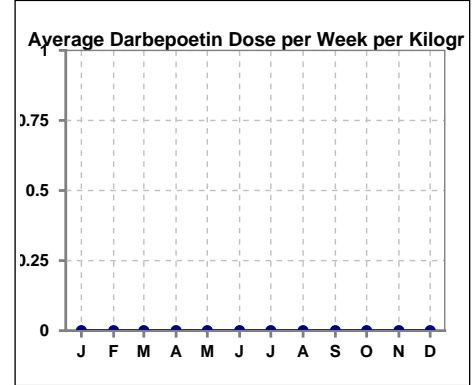
	Jan	Feb	Mar	Apr	May	Jun	Jul	Aug	Sep	Oct	Nov	Dec
# Hgb	41	41	36	39	39	40	40	40	37	36	33	34
# Hgb >= 12	3	5	1	1	8	0	4	3	1	1	2	0
Pop. Mean	10.7	11.1	11.0	10.6	11.0	10.8	11.1	11.0	11.1	11.0	11.1	10.9
Std. Deviation	1.0	0.8	0.9	0.9	1.2	0.7	0.8	0.9	0.8	0.6	0.8	0.6
% Hgb >= 12	7%	12%	3%	3%	21%	0%	10%	8%	3%	3%	6%	0%

Note: Excludes patients who received no ESA in month.



Average Darbepoetin Dose per Week per Kilogram

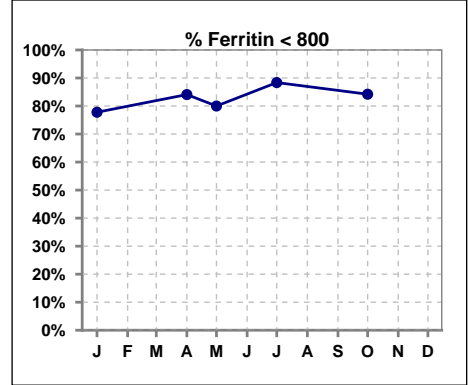
	Jan	Feb	Mar	Apr	May	Jun	Jul	Aug	Sep	Oct	Nov	Dec
# Average Darbepoetin	0	0	0	0	0	0	0	0	0	0	0	0



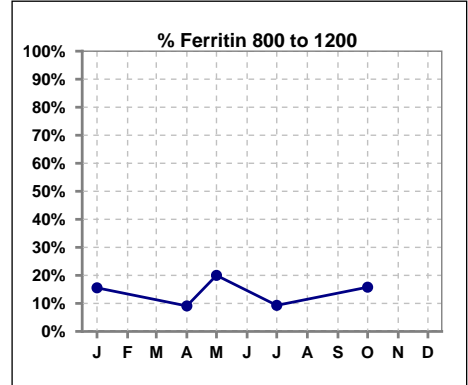
V. ANEMIA - CONT.

Iron Profile

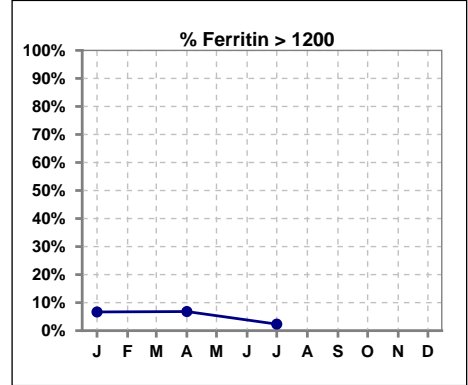
	Jan	Feb	Mar	Apr	May	Jun	Jul	Aug	Sep	Oct	Nov	Dec
# Ferritin	45			44	5		43			38		
# Ferritin < 800	35			37	4		38			32		
Pop. Mean	496			495	628		415			446		
Std. Deviation	356			315	315		272			244		
% Ferritin < 800	78%			84%	80%		88%			84%		



	Jan	Feb	Mar	Apr	May	Jun	Jul	Aug	Sep	Oct	Nov	Dec
# Ferritin	45			44	5		43			38		
# Ferritin 800 to 1200	7			4	1		4			6		
Pop. Mean	496			495	628		415			446		
Std. Deviation	356			315	315		272			244		
% Ferritin 800 to 1200	16%			9%	20%		9%			16%		



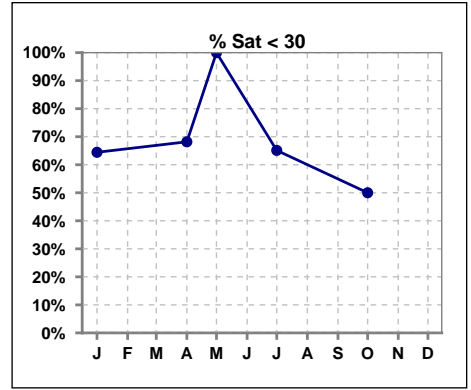
	Jan	Feb	Mar	Apr	May	Jun	Jul	Aug	Sep	Oct	Nov	Dec
# Ferritin	45			44	5		43			38		
# Ferritin > 1200	3			3			1					
Pop. Mean	496			495	628		415			446		
Std. Deviation	356			315	315		272			244		
% Ferritin > 1200	7%			7%			2%					



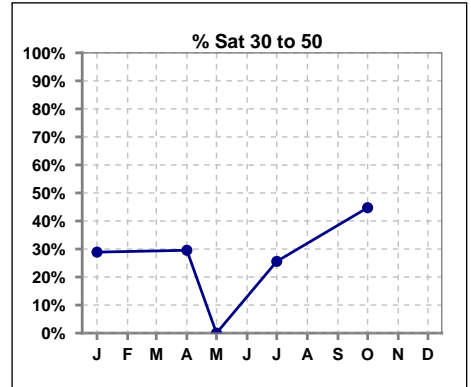
Methodology: a) All labs for 'Adequacy of Dialysis', 'Nutrition', 'Osteodystrophy', 'Anemia' and 'Diabetes' based on last value of month; b) BP's and #L processed are average of all values for month; c) Access data takes last access of month; d) Values for SGA and 'Infection Control' use most recent result.

V. ANEMIA - CONT.

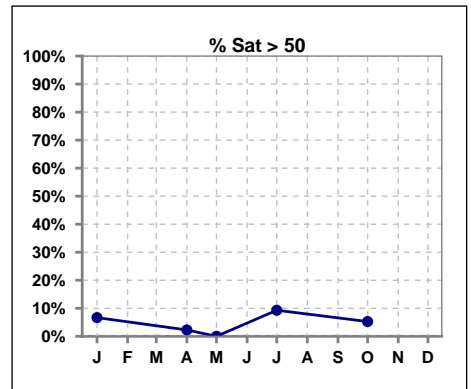
	Jan	Feb	Mar	Apr	May	Jun	Jul	Aug	Sep	Oct	Nov	Dec
# % Sat	45			44	4		43			38		
# % Sat < 30	29			30	4		28			19		
Pop. Mean	27			26	17		29			31		
Std. Deviation	18			11	5		15			14		
% % Sat < 30	64%			68%	100%		65%			50%		



	Jan	Feb	Mar	Apr	May	Jun	Jul	Aug	Sep	Oct	Nov	Dec
# % Sat	45			44	4		43			38		
# % Sat 30 to 50	13			13	0		11			17		
Pop. Mean	27			26	17		29			31		
Std. Deviation	18			11	5		15			14		
% % Sat 30 to 50	29%			30%	0%		26%			45%		



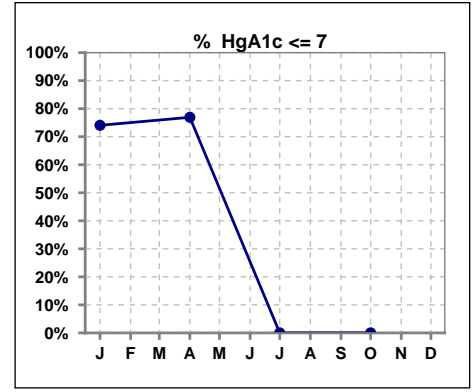
	Jan	Feb	Mar	Apr	May	Jun	Jul	Aug	Sep	Oct	Nov	Dec
# % Sat	45			44	4		43			38		
# % Sat > 50	3			1	0		4			2		
Pop. Mean	27			26	17		29			31		
Std. Deviation	18			11	5		15			14		
% % Sat > 50	7%			2%	0%		9%			5%		



Methodology: a) All labs for 'Adequacy of Dialysis', 'Nutrition', 'Osteodystrophy', 'Anemia' and 'Diabetes' based on last value of month; b) BP's and #L processed are average of all values for month; c) Access data takes last access of month; d) Values for SGA and 'Infection Control' use most recent result.

VI. Diabetes

	Jan	Feb	Mar	Apr	May	Jun	Jul	Aug	Sep	Oct	Nov	Dec
# HgA1c	27			26			0			0		
# HgA1c <= 7	20			20			0			0		
Pop. Mean	6.3			6.3			0			0		
Std. Deviation	1.47			1.59			0			0		
% HgA1c <= 7	74%			77%			0%			0%		

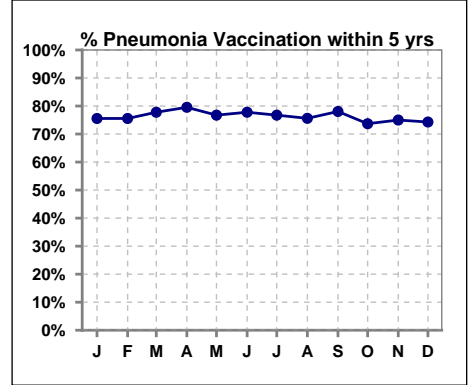


Methodology: a) All labs for 'Adequacy of Dialysis', 'Nutrition', 'Osteodystrophy', 'Anemia' and 'Diabetes' based on last value of month; b) BP's and #L processed are average of all values for month; c) Access data takes last access of month; d) Values for SGA and 'Infection Control' use most recent result.

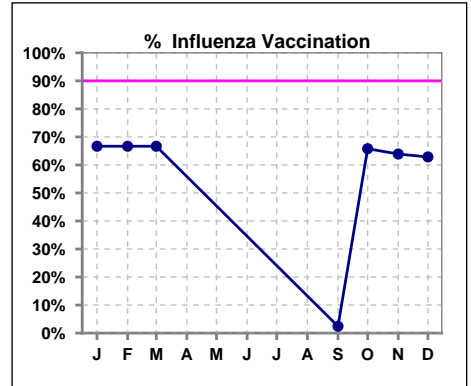
VII. Infection Control

Pneumonia vaccination within the past five years

	Jan	Feb	Mar	Apr	May	Jun	Jul	Aug	Sep	Oct	Nov	Dec
# Patient	45	45	45	44	43	45	43	41	41	38	36	35
# Pneumonia	34	34	35	35	33	35	33	31	32	28	27	26
% Pneumonia	76%	76%	78%	80%	77%	78%	77%	76%	78%	74%	75%	74%



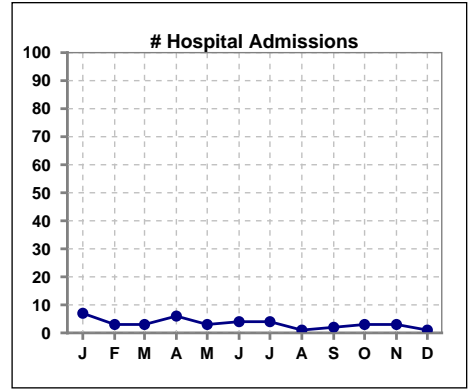
	Jan	Feb	Mar	Apr	May	Jun	Jul	Aug	Sep	Oct	Nov	Dec
# Patient	45	45	45						41	38	36	35
# Influenza	30	30	30						1	25	23	22
% Influenza	67%	67%	67%						2%	66%	64%	63%



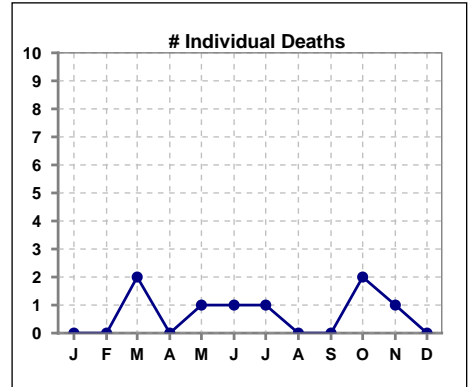
Methodology: a) All labs for 'Adequacy of Dialysis', 'Nutrition', 'Osteodystrophy', 'Anemia' and 'Diabetes' based on last value of month; b) BP's and #L processed are average of all values for month; c) Access data takes last access of month; d) Values for SGA and 'Infection Control' use most recent result.

VIII. Outcome measures

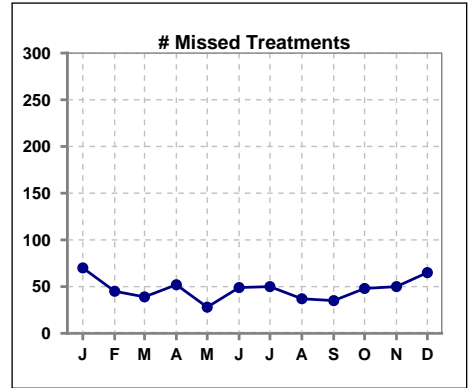
	Jan	Feb	Mar	Apr	May	Jun	Jul	Aug	Sep	Oct	Nov	Dec
# Patient	45	45	45	44	43	45	43	41	41	38	36	35
# Hospital Admissions	7	3	3	6	3	4	4	1	2	3	3	1



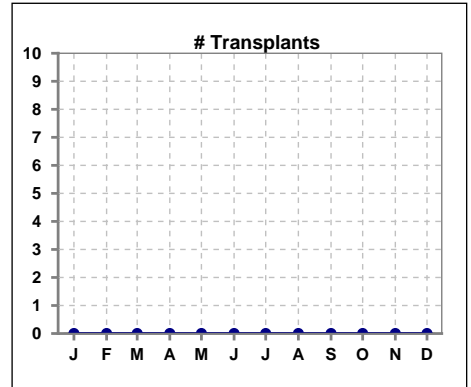
	Jan	Feb	Mar	Apr	May	Jun	Jul	Aug	Sep	Oct	Nov	Dec
# Patient	45	45	45	44	43	45	43	41	41	38	36	35
# Individual Deaths	0	0	2	0	1	1	1	0	0	2	1	0



	Jan	Feb	Mar	Apr	May	Jun	Jul	Aug	Sep	Oct	Nov	Dec
# Patient	45	45	45	44	43	45	43	41	41	38	36	35
# Missed Treatments	70	45	39	52	28	49	50	37	35	48	50	65



	Jan	Feb	Mar	Apr	May	Jun	Jul	Aug	Sep	Oct	Nov	Dec
# Patient	45	45	45	44	43	45	43	41	41	38	36	35
# Transplants	0	0	0	0	0	0	0	0	0	0	0	0



Methodology: a) All labs for 'Adequacy of Dialysis', 'Nutrition', 'Osteodystrophy', 'Anemia' and 'Diabetes' based on last value of month; b) BP's and #L processed are average of all values for month; c) Access data takes last access of month; d) Values for SGA and 'Infection Control' use most recent result.