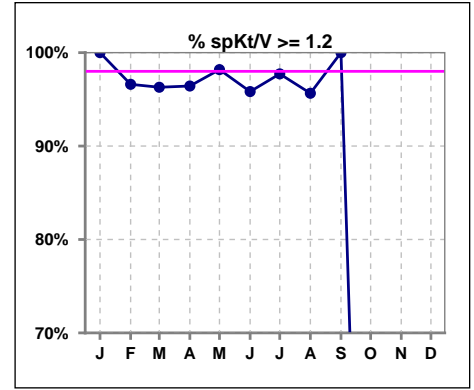
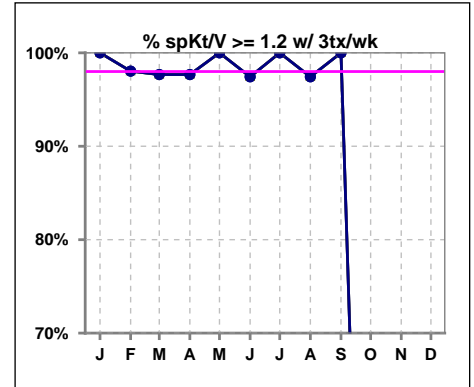


I. ADEQUACY OF DIALYSIS

	Jan	Feb	Mar	Apr	May	Jun	Jul	Aug	Sep	Oct	Nov	Dec
# spKt/V	58	59	54	56	55	48	44	46	44	0	0	0
# spKt/V >= 1.2	58	57	52	54	54	46	43	44	44	0	0	0
Pop. Mean	1.68	1.66	1.66	1.64	1.63	1.56	1.55	1.59	1.61	0	0	0
Std. Deviation	0.39	0.32	0.41	0.29	0.29	0.35	0.29	0.31	0.27	0	0	0
% spKt/V >= 1.2	100%	97%	96%	96%	98%	96%	98%	96%	100%	0%	0%	0%



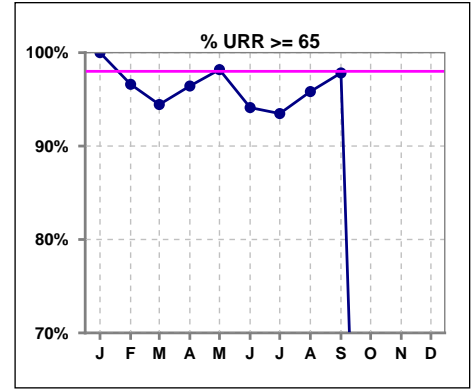
	Jan	Feb	Mar	Apr	May	Jun	Jul	Aug	Sep	Oct	Nov	Dec
# spKt/V w/ 3tx/wk	47	51	43	43	42	39	37	39	38	0	0	0
# spKt/V >= 1.2 w/3tx/wk	47	50	42	42	42	38	37	38	38	0	0	0
Pop. Mean	1.64	1.66	1.70	1.68	1.65	1.58	1.58	1.61	1.60	0	0	0
Std. Deviation	0.29	0.32	0.43	0.29	0.31	0.37	0.27	0.29	0.28	0	0	0
% >= 1.2 w/3tx/wk	100%	98%	98%	98%	100%	97%	100%	97%	100%	0%	0%	0%



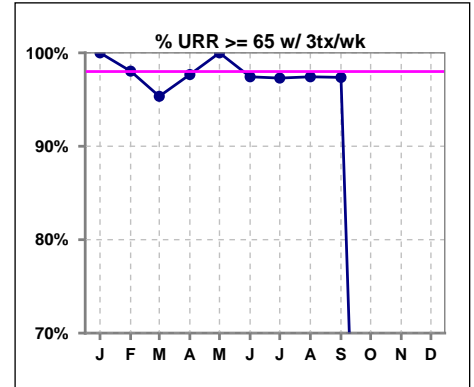
Methodology: a) All labs for 'Adequacy of Dialysis', 'Nutrition', 'Osteodystrophy', 'Anemia' and 'Diabetes' based on last value of month; b) BP's and #L processed are average of all values for month; c) Access data takes last access of month; d) Values for SGA and 'Infection Control' use most recent result.

I. ADEQUACY OF DIALYSIS - CONT.

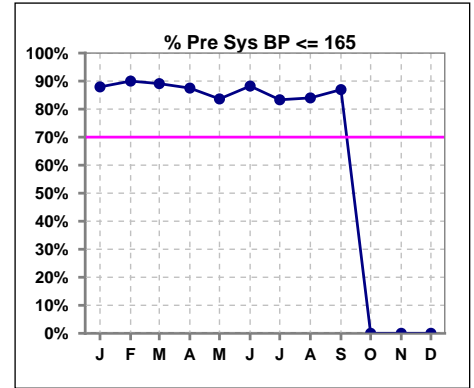
	Jan	Feb	Mar	Apr	May	Jun	Jul	Aug	Sep	Oct	Nov	Dec
# URR	58	59	54	56	55	51	46	48	46	0	0	0
# URR >= 65	58	57	51	54	54	48	43	46	45	0	0	0
Pop. Mean	76	75	75	75	75	73	73	74	75	0	0	0
Std. Deviation	5.92	6.23	7.02	5.61	5.17	5.94	6.67	6.55	5.55	0	0	0
% URR >= 65	100%	97%	94%	96%	98%	94%	93%	96%	98%	0%	0%	0%



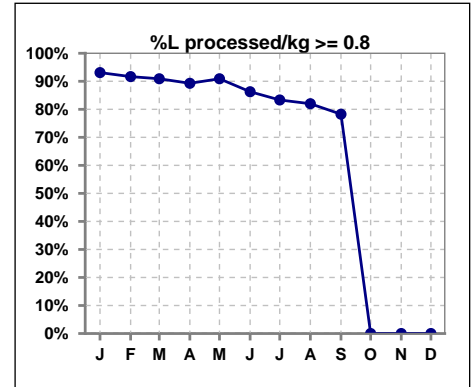
	Jan	Feb	Mar	Apr	May	Jun	Jul	Aug	Sep	Oct	Nov	Dec
# URR w/ 3tx/wk	47	51	43	43	42	39	37	39	38	0	0	0
# URR>=65 w/ 3tx/wk	47	50	41	42	42	38	36	38	37	0	0	0
Pop. Mean	75	75	76	76	75	74	74	75	75	0	0	0
Std. Deviation	5.52	5.86	7.19	5.56	5.17	5.84	5.24	5.76	5.35	0	0	0
% URR>=65 w/ 3tx/wk	100%	98%	95%	98%	100%	97%	97%	97%	97%	0%	0%	0%



	Jan	Feb	Mar	Apr	May	Jun	Jul	Aug	Sep	Oct	Nov	Dec
# Pre Sys BP	58	60	55	56	55	51	48	50	46	0	0	0
# Pre Sys BP <= 165	53	54	50	50	46	46	40	44	40	0	0	0
Pop. Mean	143	141	141	144	143	142	141	141	143	0	0	0
Std. Deviation	18.4	17.8	18.0	18.3	19.3	19.5	20.2	22.1	21.1	0	0	0
% Pre Sys BP <=165	88%	90%	89%	88%	84%	88%	83%	84%	87%	0%	0%	0%



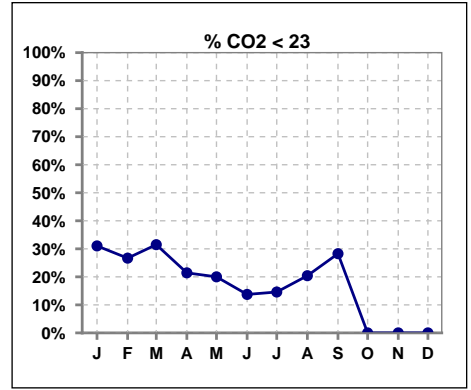
	Jan	Feb	Mar	Apr	May	Jun	Jul	Aug	Sep	Oct	Nov	Dec
# L processed/kg	58	60	55	56	55	51	48	50	46	0	0	0
# L processed/kg>=0.8	54	55	50	50	50	44	40	41	36	0	0	0
Pop. Mean	1	1	1	1	1	1	1	1	1	0	0	0
Std. Deviation	0.3	0.3	0.3	0.3	0.3	0.3	0.3	0.3	0.3	0	0	0
% L processed/kg>=0.8	93%	92%	91%	89%	91%	86%	83%	82%	78%	0%	0%	0%



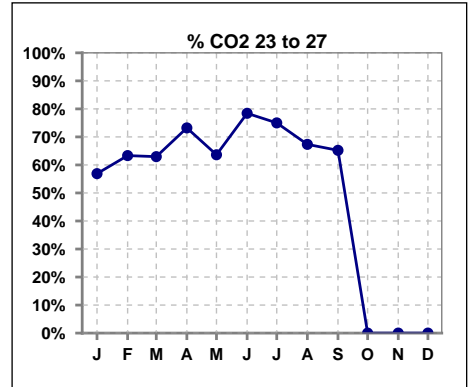
Methodology: a) All labs for 'Adequacy of Dialysis', 'Nutrition', 'Osteodystrophy', 'Anemia' and 'Diabetes' based on last value of month; b) BP's and #L processed are average of all values for month; c) Access data takes last access of month; d) Values for SGA and 'Infection Control' use most recent result.

I. ADEQUACY OF DIALYSIS - CONT.

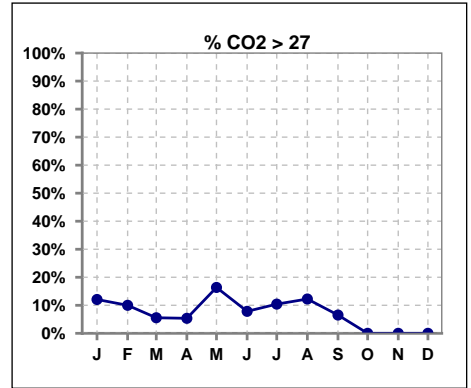
	Jan	Feb	Mar	Apr	May	Jun	Jul	Aug	Sep	Oct	Nov	Dec
# CO2	58	60	54	56	55	51	48	49	46	0	0	0
# CO2 < 23	18	16	17	12	11	7	7	10	13	0	0	0
Pop. Mean	24	24	24	24	24	24	25	24	24	0	0	0
Std. Deviation	3.82	2.96	2.48	2.53	2.83	2.41	3.13	2.73	2.40	0	0	0
% CO2 < 23	31%	27%	31%	21%	20%	14%	15%	20%	28%	0%	0%	0%



	Jan	Feb	Mar	Apr	May	Jun	Jul	Aug	Sep	Oct	Nov	Dec
# CO2	58	60	54	56	55	51	48	49	46	0	0	0
# CO2 23 to 27	33	38	34	41	35	40	36	33	30	0	0	0
Pop. Mean	24	24	24	24	24	24	25	24	24	0	0	0
Std. Deviation	3.82	2.96	2.48	2.53	2.83	2.41	3.13	2.73	2.40	0	0	0
% CO2 23 to 27	57%	63%	63%	73%	64%	78%	75%	67%	65%	0%	0%	0%



	Jan	Feb	Mar	Apr	May	Jun	Jul	Aug	Sep	Oct	Nov	Dec
# CO2	58	60	54	56	55	51	48	49	46	0	0	0
# CO2 > 27	7	6	3	3	9	4	5	6	3	0	0	0
Pop. Mean	24	24	24	24	24	24	25	24	24	0	0	0
Std. Deviation	3.82	2.96	2.48	2.53	2.83	2.41	3.13	2.73	2.40	0	0	0
% CO2 > 27	12%	10%	6%	5%	16%	8%	10%	12%	7%	0%	0%	0%

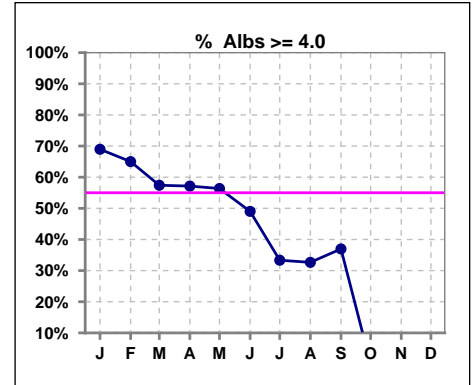


Methodology: a) All labs for 'Adequacy of Dialysis', 'Nutrition', 'Osteodystrophy', 'Anemia' and 'Diabetes' based on last value of month; b) BP's and #L processed are average of all values for month; c) Access data takes last access of month; d) Values for SGA and 'Infection Control' use most recent result.

*Albumin values use BCG method - as of July 2001

II. NUTRITION

	Jan	Feb	Mar	Apr	May	Jun	Jul	Aug	Sep	Oct	Nov	Dec
# Albumin	58	60	54	56	55	51	48	49	46	0	0	0
# Albumin >= 4.0	40	39	31	32	31	25	16	16	17	0	0	0
Pop. Mean	4.0	4.0	4.0	4.0	4.0	3.8	3.9	3.7	3.7	0	0	0
Std. Deviation	0.36	0.42	0.39	0.33	0.35	0.40	0.44	0.51	0.44	0	0	0
% Alb >= 4.0	69%	65%	57%	57%	56%	49%	33%	33%	37%	0%	0%	0%

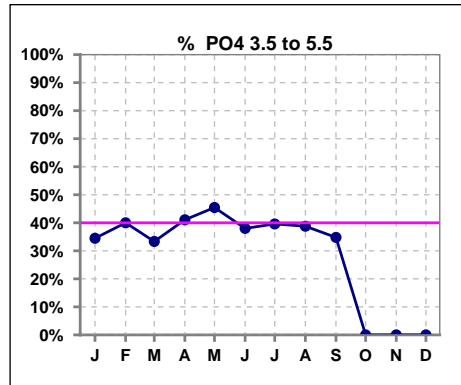


Methodology: a) All labs for 'Adequacy of Dialysis', 'Nutrition', 'Osteodystrophy', 'Anemia' and 'Diabetes' based on last value of month; b) BP's and #L processed are average of all values for month; c) Access data takes last access of month; d) Values for SGA and 'Infection Control' use most recent result.

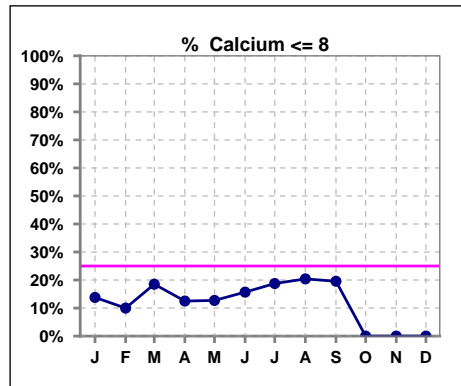
Lab methodology for PTH changed January 2012

III. OSTEODYSTROPHY

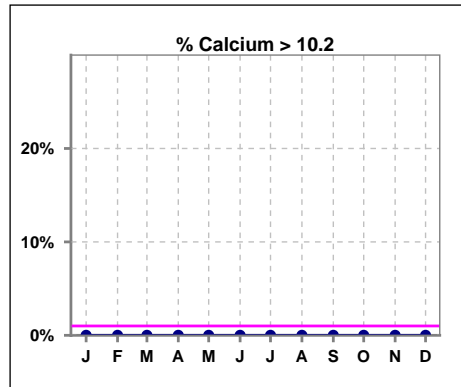
	Jan	Feb	Mar	Apr	May	Jun	Jul	Aug	Sep	Oct	Nov	Dec
# PO4	58	60	54	56	55	50	48	49	46	0	0	0
# PO4 3.5 to 5.5	20	24	18	23	25	19	19	19	16	0	0	0
Pop. Mean	6.5	6.0	6.3	5.8	5.7	6.0	6.1	6.2	5.6	0	0	0
Std. Deviation	2.38	2.02	2.01	2.18	2.01	2.06	1.94	2.21	1.75	0	0	0
% PO4 3.5 to 5.5	34%	40%	33%	41%	45%	38%	40%	39%	35%	0%	0%	0%



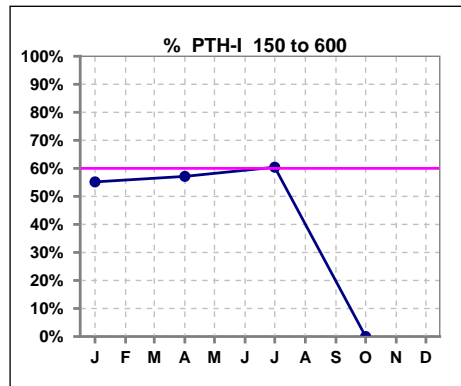
	Jan	Feb	Mar	Apr	May	Jun	Jul	Aug	Sep	Oct	Nov	Dec
# Calcium	58	60	54	56	55	51	48	49	46	0	0	0
# Calcium <= 8	8	6	10	7	7	8	9	10	9	0	0	0
Pop. Mean	8.9	8.9	8.8	8.9	9.0	8.8	8.7	8.7	8.7	0	0	0
Std. Deviation	0.83	0.83	0.74	0.72	0.74	0.81	0.67	0.75	0.75	0	0	0
% Calcium <= 8	14%	10%	19%	13%	13%	16%	19%	20%	20%	0%	0%	0%



	Jan	Feb	Mar	Apr	May	Jun	Jul	Aug	Sep	Oct	Nov	Dec
# Calcium	58	60	54	56	55	51	48	49	46	0	0	0
# Calcium > 10.2	0	0	0	0	0	0	0	0	0	0	0	0
Pop. Mean	8.9	8.9	8.8	8.9	9.0	8.8	8.7	8.7	8.7	0	0	0
Std. Deviation	0.83	0.83	0.74	0.72	0.74	0.81	0.67	0.75	0.75	0	0	0
% Calcium > 10.2	0%	0%	0%	0%	0%	0%	0%	0%	0%	0%	0%	0%



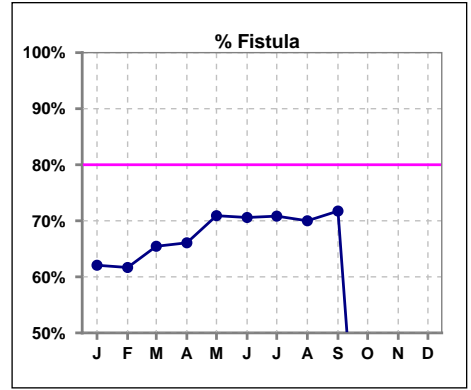
	Jan	Feb	Mar	Apr	May	Jun	Jul	Aug	Sep	Oct	Nov	Dec
# PTH-I	58			56			48			0		
# PTH-I 150 to 600	32			32			29			0		
Pop. Mean	541			533			548			0		
Std. Deviation	379			284			369			0		
% PTH-I 150 to 600	55%			57%			60%			0%		



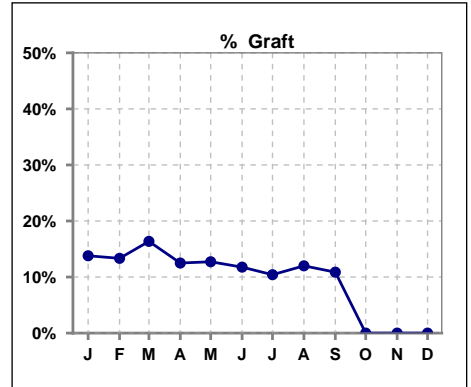
Methodology: a) All labs for 'Adequacy of Dialysis', 'Nutrition', 'Osteodystrophy', 'Anemia' and 'Diabetes' based on last value of month; b) BP's and #L processed are average of all values for month; c) Access data takes last access of month; d) Values for SGA and 'Infection Control' use most recent result.

IV. ACCESS

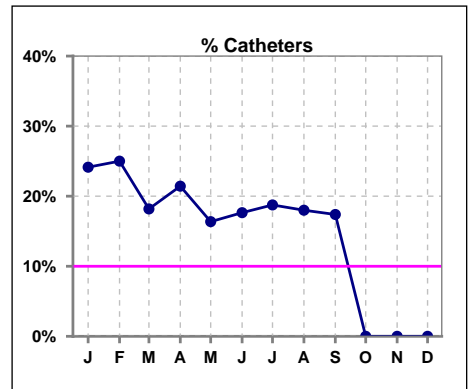
	Jan	Feb	Mar	Apr	May	Jun	Jul	Aug	Sep	Oct	Nov	Dec
# Access	58	60	55	56	55	51	48	50	46	0	0	0
# Fistula	36	37	36	37	39	36	34	35	33	0	0	0
% Fistula	62%	62%	65%	66%	71%	71%	71%	70%	72%	0%	0%	0%



	Jan	Feb	Mar	Apr	May	Jun	Jul	Aug	Sep	Oct	Nov	Dec
# Access	58	60	55	56	55	51	48	50	46	0	0	0
# Graft	8	8	9	7	7	6	5	6	5	0	0	0
% Graft	14%	13%	16%	13%	13%	12%	10%	12%	11%	0%	0%	0%



	Jan	Feb	Mar	Apr	May	Jun	Jul	Aug	Sep	Oct	Nov	Dec
# Access	58	60	55	56	55	51	48	50	46	0	0	0
# Catheters	14	15	10	12	9	9	9	9	8	0	0	0
% Catheters	24%	25%	18%	21%	16%	18%	19%	18%	17%	0%	0%	0%



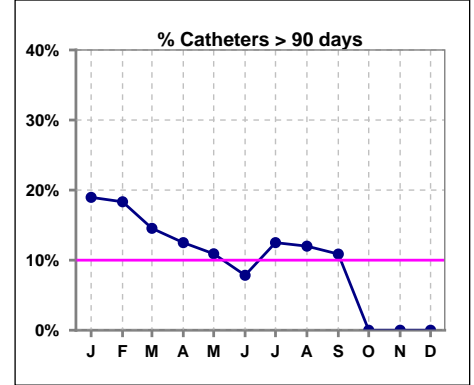
Methodology: a) All labs for 'Adequacy of Dialysis', 'Nutrition', 'Osteodystrophy', 'Anemia' and 'Diabetes' based on last value of month; b) BP's and #L processed are average of all values for month; c) Access data takes last access of month; d) Values for SGA and 'Infection Control' use most recent result.

IV. ACCESS - CONT.

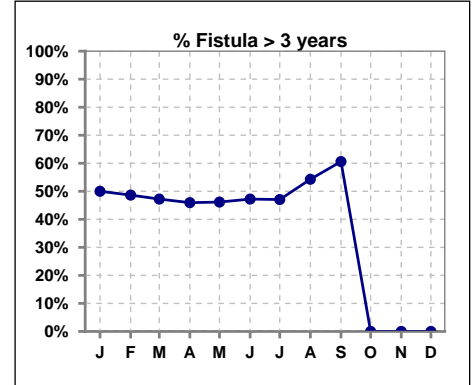
Catheters > 90 days

	Jan	Feb	Mar	Apr	May	Jun	Jul	Aug	Sep	Oct	Nov	Dec
# Access	58	60	55	56	55	51	48	50	46	0	0	0
# Catheters	11	11	8	7	6	4	6	6	5	0	0	0
% Catheters	19%	18%	15%	13%	11%	8%	13%	12%	11%	0%	0%	0%

Definition: Catheter in use on last treatment of the month



	Jan	Feb	Mar	Apr	May	Jun	Jul	Aug	Sep	Oct	Nov	Dec
# Fistula	36	37	36	37	39	36	34	35	33	0	0	0
# Fistula > 3 yrs	18	18	17	17	18	17	16	19	20	0	0	0
% Fistula > 3 yrs	50%	49%	47%	46%	46%	47%	47%	54%	61%	0%	0%	0%

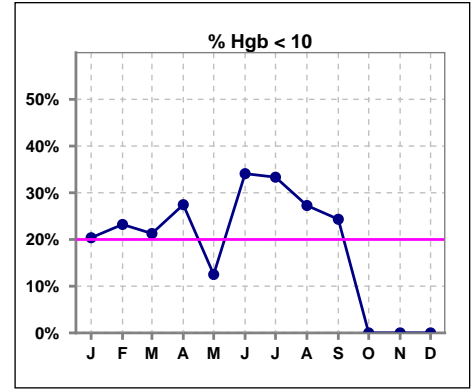


Methodology: a) All labs for 'Adequacy of Dialysis', 'Nutrition', 'Osteodystrophy', 'Anemia' and 'Diabetes' based on last value of month; b) BP's and #L processed are average of all values for month; c) Access data takes last access of month; d) Values for SGA and 'Infection Control' use most recent result.

V. ANEMIA

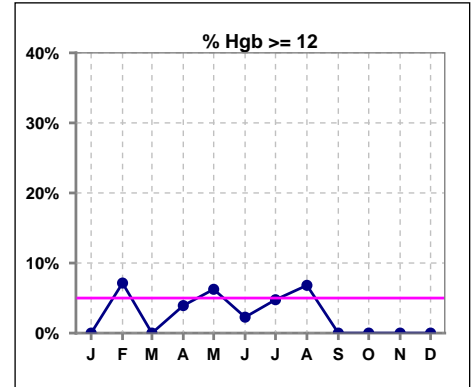
	Jan	Feb	Mar	Apr	May	Jun	Jul	Aug	Sep	Oct	Nov	Dec
# Hgb	54	56	47	51	48	44	42	44	37	0	0	0
# Hgb < 10	11	13	10	14	6	15	14	12	9	0	0	0
Pop. Mean	10.5	10.7	10.6	10.5	10.7	10.3	10.3	10.3	10.4	0	0	0
Std. Deviation	1.1	1.5	1.2	1.3	1.0	1.1	1.3	1.6	1.2	0	0	0
% Hgb < 10	20%	23%	21%	27%	13%	34%	33%	27%	24%	0%	0%	0%

Note: Excludes patients who received no ESA in month.



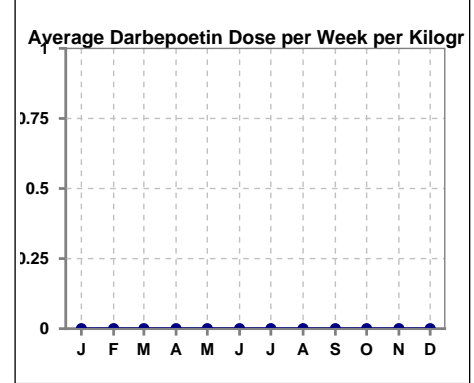
	Jan	Feb	Mar	Apr	May	Jun	Jul	Aug	Sep	Oct	Nov	Dec
# Hgb	54	56	47	51	48	44	42	44	37	0	0	0
# Hgb >= 12	0	4	0	2	3	1	2	3	0	0	0	0
Pop. Mean	10.5	10.7	10.6	10.5	10.7	10.3	10.3	10.3	10.4	0	0	0
Std. Deviation	1.1	1.5	1.2	1.3	1.0	1.1	1.3	1.6	1.2	0	0	0
% Hgb >= 12	0%	7%	0%	4%	6%	2%	5%	7%	0%	0%	0%	0%

Note: Excludes patients who received no ESA in month.



Average Darbepoetin Dose per Week per Kilogram

	Jan	Feb	Mar	Apr	May	Jun	Jul	Aug	Sep	Oct	Nov	Dec
# Average Darbepoetin	0	0	0	0	0	0	0	0	0	0	0	0

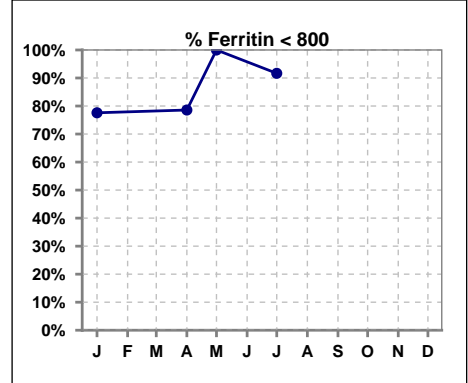


Methodology: a) All labs for 'Adequacy of Dialysis', 'Nutrition', 'Osteodystrophy', 'Anemia' and 'Diabetes' based on last value of month; b) BP's and #L processed are average of all values for month; c) Access data takes last access of month; d) Values for SGA and 'Infection Control' use most recent result.

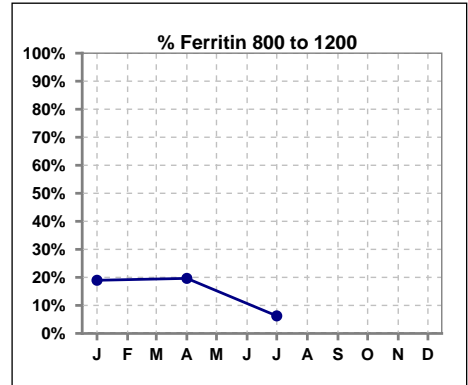
V. ANEMIA - CONT.

Iron Profile

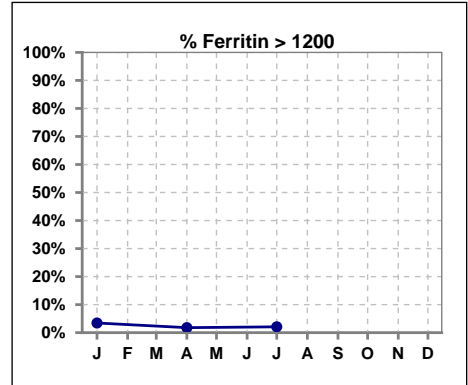
	Jan	Feb	Mar	Apr	May	Jun	Jul	Aug	Sep	Oct	Nov	Dec
# Ferritin	58			56	1		48					
# Ferritin < 800	45			44	1		44					
Pop. Mean	563			532	499		446					
Std. Deviation	342			315	0		319					
% Ferritin < 800	78%			79%	100%		92%					



	Jan	Feb	Mar	Apr	May	Jun	Jul	Aug	Sep	Oct	Nov	Dec
# Ferritin	58			56	1		48					
# Ferritin 800 to 1200	11			11			3					
Pop. Mean	563			532	499		446					
Std. Deviation	342			315	0		319					
% Ferritin 800 to 1200	19%			20%			6%					



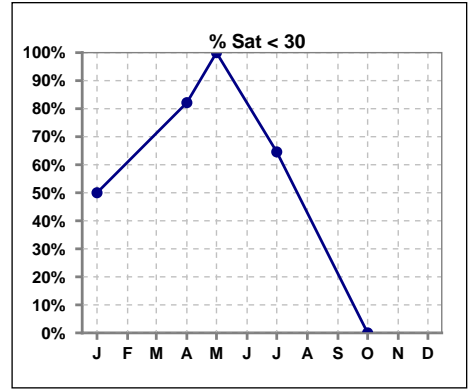
	Jan	Feb	Mar	Apr	May	Jun	Jul	Aug	Sep	Oct	Nov	Dec
# Ferritin	58			56	1		48					
# Ferritin > 1200	2			1			1					
Pop. Mean	563			532	499		446					
Std. Deviation	342			315	0		319					
% Ferritin > 1200	3%			2%			2%					



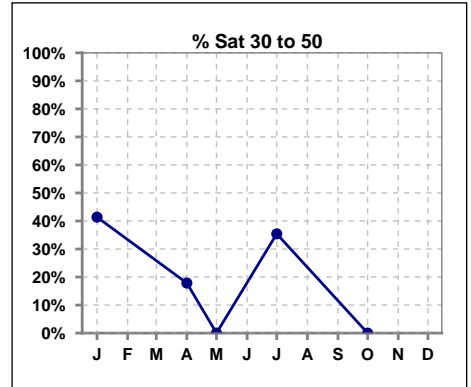
Methodology: a) All labs for 'Adequacy of Dialysis', 'Nutrition', 'Osteodystrophy', 'Anemia' and 'Diabetes' based on last value of month; b) BP's and #L processed are average of all values for month; c) Access data takes last access of month; d) Values for SGA and 'Infection Control' use most recent result.

V. ANEMIA - CONT.

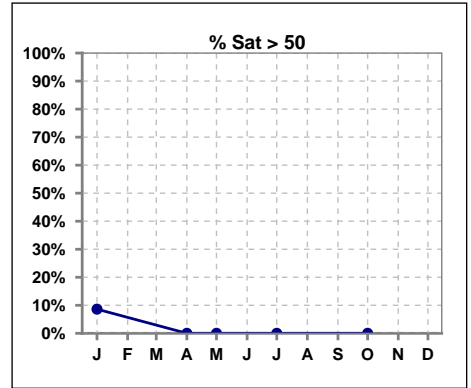
	Jan	Feb	Mar	Apr	May	Jun	Jul	Aug	Sep	Oct	Nov	Dec
# % Sat	58			56	3		48			0		
# % Sat < 30	29			46	3		31			0		
Pop. Mean	31			23	18		25			0		
Std. Deviation	16			8	4		8			0		
% % Sat < 30	50%			82%	100%		65%			0%		



	Jan	Feb	Mar	Apr	May	Jun	Jul	Aug	Sep	Oct	Nov	Dec
# % Sat	58			56	3		48			0		
# % Sat 30 to 50	24			10	0		17			0		
Pop. Mean	31			23	18		25			0		
Std. Deviation	16			8	4		8			0		
% % Sat 30 to 50	41%			18%	0%		35%			0%		



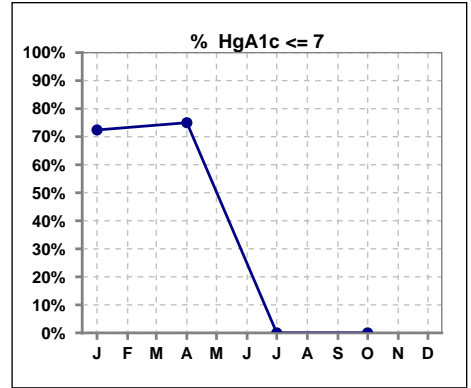
	Jan	Feb	Mar	Apr	May	Jun	Jul	Aug	Sep	Oct	Nov	Dec
# % Sat	58			56	3		48			0		
# % Sat > 50	5			0	0		0			0		
Pop. Mean	31			23	18		25			0		
Std. Deviation	16			8	4		8			0		
% % Sat > 50	9%			0%	0%		0%			0%		



Methodology: a) All labs for 'Adequacy of Dialysis', 'Nutrition', 'Osteodystrophy', 'Anemia' and 'Diabetes' based on last value of month; b) BP's and #L processed are average of all values for month; c) Access data takes last access of month; d) Values for SGA and 'Infection Control' use most recent result.

VI. Diabetes

	Jan	Feb	Mar	Apr	May	Jun	Jul	Aug	Sep	Oct	Nov	Dec
# HgA1c	29			28			0			0		
# HgA1c <= 7	21			21			0			0		
Pop. Mean	6.4			6.4			0			0		
Std. Deviation	1.31			1.57			0			0		
% HgA1c <= 7	72%			75%			0%			0%		

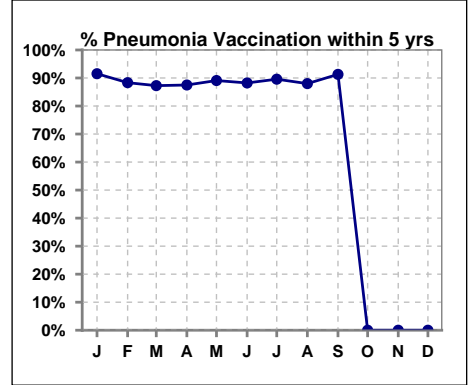


Methodology: a) All labs for 'Adequacy of Dialysis', 'Nutrition', 'Osteodystrophy', 'Anemia' and 'Diabetes' based on last value of month; b) BP's and #L processed are average of all values for month; c) Access data takes last access of month; d) Values for SGA and 'Infection Control' use most recent result.

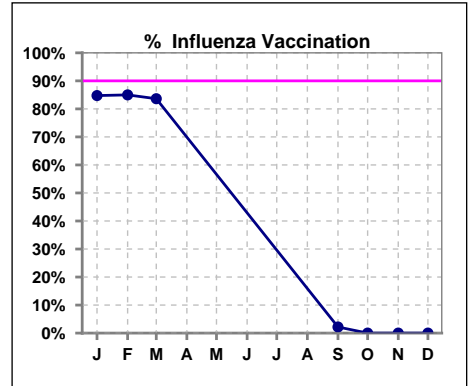
VII. Infection Control

Pneumonia vaccination within the past five years

	Jan	Feb	Mar	Apr	May	Jun	Jul	Aug	Sep	Oct	Nov	Dec
# Patient	59	60	55	56	55	51	48	50	46	0	1	0
# Pneumonia	54	53	48	49	49	45	43	44	42	0	0	0
% Pneumonia	92%	88%	87%	88%	89%	88%	90%	88%	91%	0%	0%	0%



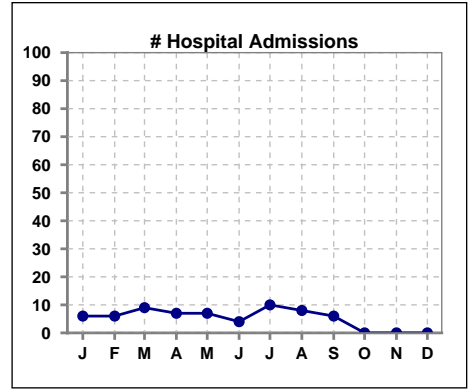
	Jan	Feb	Mar	Apr	May	Jun	Jul	Aug	Sep	Oct	Nov	Dec
# Patient	59	60	55						46	0	1	0
# Influenza	50	51	46						1	0	0	0
% Influenza	85%	85%	84%						2%	0%	0%	0%



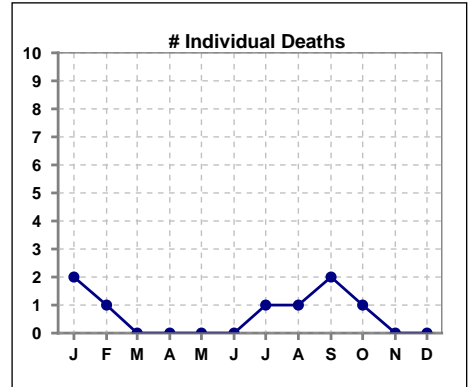
Methodology: a) All labs for 'Adequacy of Dialysis', 'Nutrition', 'Osteodystrophy', 'Anemia' and 'Diabetes' based on last value of month; b) BP's and #L processed are average of all values for month; c) Access data takes last access of month; d) Values for SGA and 'Infection Control' use most recent result.

VIII. Outcome measures

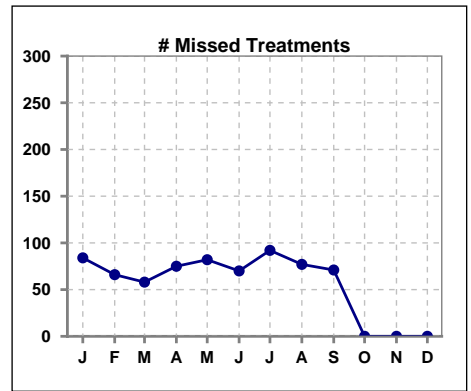
	Jan	Feb	Mar	Apr	May	Jun	Jul	Aug	Sep	Oct	Nov	Dec
# Patient	59	60	55	56	55	51	48	50	46	0	1	0
# Hospital Admissions	6	6	9	7	7	4	10	8	6	0	0	0



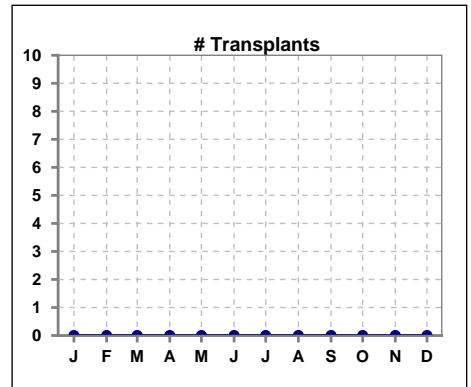
	Jan	Feb	Mar	Apr	May	Jun	Jul	Aug	Sep	Oct	Nov	Dec
# Patient	59	60	55	56	55	51	48	50	46	0	1	0
# Individual Deaths	2	1	0	0	0	0	1	1	2	1	0	0



	Jan	Feb	Mar	Apr	May	Jun	Jul	Aug	Sep	Oct	Nov	Dec
# Patient	59	60	55	56	55	51	48	50	46	0	1	0
# Missed Treatments	84	66	58	75	82	70	92	77	71	0	0	0



	Jan	Feb	Mar	Apr	May	Jun	Jul	Aug	Sep	Oct	Nov	Dec
# Patient	59	60	55	56	55	51	48	50	46	0	1	0
# Transplants	0	0	0	0	0	0	0	0	0	0	0	0



Methodology: a) All labs for 'Adequacy of Dialysis', 'Nutrition', 'Osteodystrophy', 'Anemia' and 'Diabetes' based on last value of month; b) BP's and #L processed are average of all values for month; c) Access data takes last access of month; d) Values for SGA and 'Infection Control' use most recent result.