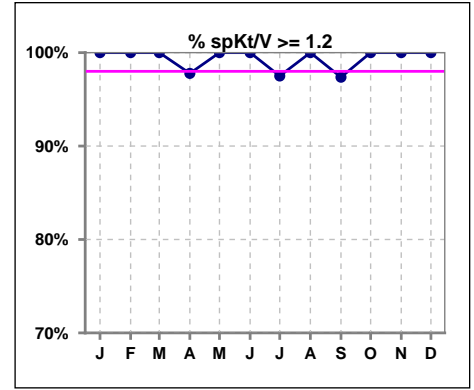
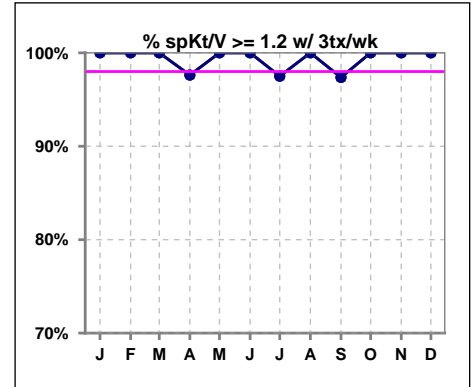


I. ADEQUACY OF DIALYSIS

	Jan	Feb	Mar	Apr	May	Jun	Jul	Aug	Sep	Oct	Nov	Dec
# spKt/V	39	41	41	45	45	41	40	38	38	41	41	40
# spKt/V >= 1.2	39	41	41	44	45	41	39	38	37	41	41	40
Pop. Mean	1.71	1.79	1.71	1.71	1.70	1.58	1.62	1.60	1.65	1.68	1.74	1.65
Std. Deviation	0.31	0.32	0.30	0.32	0.29	0.23	0.30	0.26	0.30	0.27	0.29	0.27
% spKt/V >= 1.2	100%	100%	100%	98%	100%	100%	98%	100%	97%	100%	100%	100%



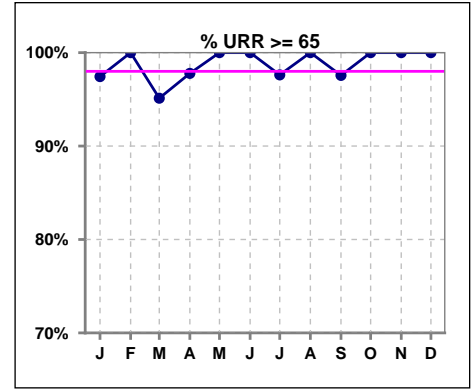
	Jan	Feb	Mar	Apr	May	Jun	Jul	Aug	Sep	Oct	Nov	Dec
# spKt/V w/ 3tx/wk	37	40	39	42	43	41	40	38	38	40	41	40
# spKt/V >= 1.2 w/3tx/wk	37	40	39	41	43	41	39	38	37	40	41	40
Pop. Mean	1.72	1.79	1.71	1.72	1.70	1.58	1.62	1.60	1.65	1.69	1.74	1.65
Std. Deviation	0.31	0.32	0.31	0.33	0.30	0.23	0.30	0.26	0.30	0.26	0.29	0.27
% >= 1.2 w/3tx/wk	100%	100%	100%	98%	100%	100%	98%	100%	97%	100%	100%	100%



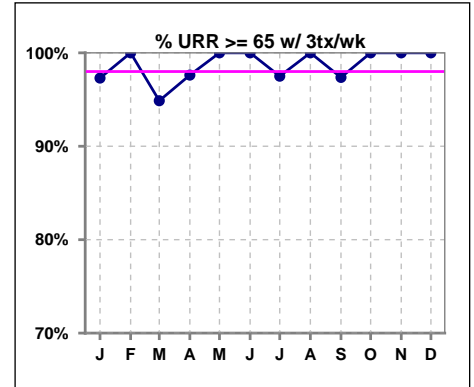
Methodology: a) All labs for 'Adequacy of Dialysis', 'Nutrition', 'Osteodystrophy', 'Anemia' and 'Diabetes' based on last value of month; b) BP's and #L processed are average of all values for month; c) Access data takes last access of month; d) Values for SGA and 'Infection Control' use most recent result.

I. ADEQUACY OF DIALYSIS - CONT.

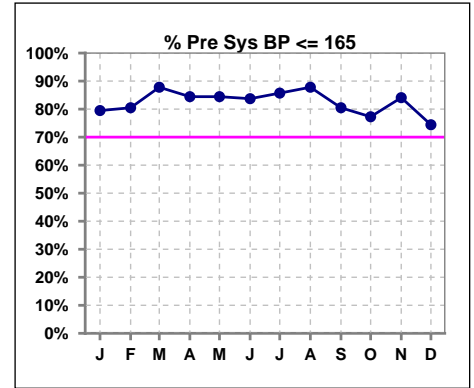
	Jan	Feb	Mar	Apr	May	Jun	Jul	Aug	Sep	Oct	Nov	Dec
# URR	39	41	41	45	45	43	42	41	41	44	44	43
# URR >= 65	38	41	39	44	45	43	41	41	40	44	44	43
Pop. Mean	77	78	77	76	77	75	76	75	76	76	77	76
Std. Deviation	5.41	5.76	5.95	5.83	5.30	4.75	5.33	4.74	5.51	4.55	4.83	4.94
% URR >= 65	97%	100%	95%	98%	100%	100%	98%	100%	98%	100%	100%	100%



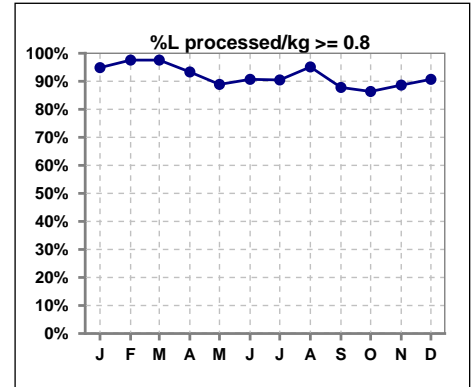
	Jan	Feb	Mar	Apr	May	Jun	Jul	Aug	Sep	Oct	Nov	Dec
# URR w/ 3tx/wk	37	40	39	42	43	41	40	38	38	40	41	40
# URR>=65 w/ 3tx/wk	36	40	37	41	43	41	39	38	37	40	41	40
Pop. Mean	77	78	77	77	77	75	76	75	76	77	77	76
Std. Deviation	5.56	5.83	6.08	6.00	5.39	4.85	5.45	4.83	5.59	4.57	4.92	5.00
% URR>=65 w/ 3tx/wk	97%	100%	95%	98%	100%	100%	98%	100%	97%	100%	100%	100%



	Jan	Feb	Mar	Apr	May	Jun	Jul	Aug	Sep	Oct	Nov	Dec
# Pre Sys BP	39	41	41	45	45	43	42	41	41	44	44	43
# Pre Sys BP <= 165	33	33	36	39	38	37	37	37	33	34	37	34
Pop. Mean	146	148	147	147	144	144	142	144	143	146	145	147
Std. Deviation	19.7	19.9	18.0	18.7	18.7	18.8	18.4	19.7	20.4	19.5	20.4	20.9
% Pre Sys BP <= 165	79%	80%	88%	84%	84%	84%	86%	88%	80%	77%	84%	74%



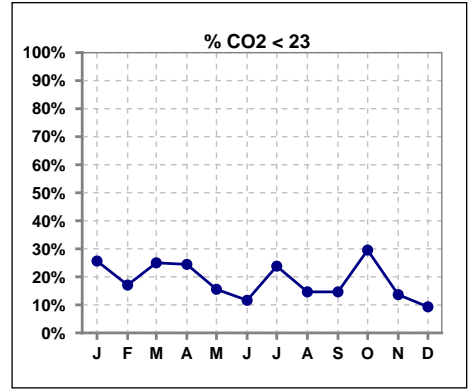
	Jan	Feb	Mar	Apr	May	Jun	Jul	Aug	Sep	Oct	Nov	Dec
# L processed/kg	39	41	41	45	45	43	42	41	41	44	44	43
# L processed/kg>=0.8	37	40	40	42	40	39	38	39	36	38	39	39
Pop. Mean	1	1	1	1	1	1	1	1	1	1	1	1
Std. Deviation	0.2	0.2	0.3	0.3	0.3	0.3	0.3	0.4	0.4	0.4	0.3	0.3
% L processed/kg>=0.8	95%	98%	98%	93%	89%	91%	90%	95%	88%	86%	89%	91%



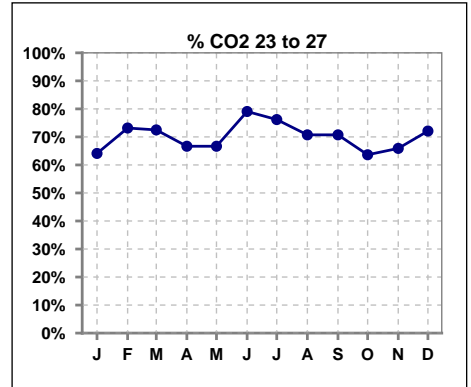
Methodology: a) All labs for 'Adequacy of Dialysis', 'Nutrition', 'Osteodystrophy', 'Anemia' and 'Diabetes' based on last value of month; b) BP's and #L processed are average of all values for month; c) Access data takes last access of month; d) Values for SGA and 'Infection Control' use most recent result.

I. ADEQUACY OF DIALYSIS - CONT.

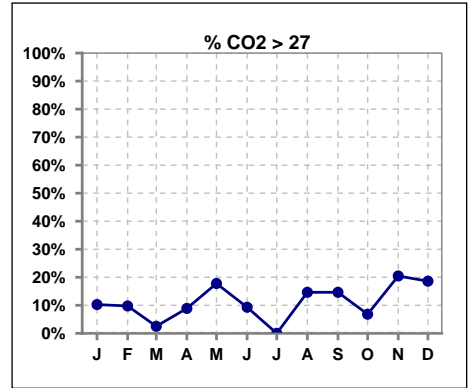
	Jan	Feb	Mar	Apr	May	Jun	Jul	Aug	Sep	Oct	Nov	Dec
# CO2	39	41	40	45	45	43	42	41	41	44	44	43
# CO2 < 23	10	7	10	11	7	5	10	6	6	13	6	4
Pop. Mean	24	24	24	24	25	25	24	25	25	23	26	25
Std. Deviation	2.46	2.28	2.23	2.21	2.59	2.70	2.88	2.81	2.82	3.14	2.94	3.02
% CO2 < 23	26%	17%	25%	24%	16%	12%	24%	15%	15%	30%	14%	9%



	Jan	Feb	Mar	Apr	May	Jun	Jul	Aug	Sep	Oct	Nov	Dec
# CO2	39	41	40	45	45	43	42	41	41	44	44	43
# CO2 23 to 27	25	30	29	30	30	34	32	29	29	28	29	31
Pop. Mean	24	24	24	24	25	25	24	25	25	23	26	25
Std. Deviation	2.46	2.28	2.23	2.21	2.59	2.70	2.88	2.81	2.82	3.14	2.94	3.02
% CO2 23 to 27	64%	73%	73%	67%	67%	79%	76%	71%	71%	64%	66%	72%



	Jan	Feb	Mar	Apr	May	Jun	Jul	Aug	Sep	Oct	Nov	Dec
# CO2	39	41	40	45	45	43	42	41	41	44	44	43
# CO2 > 27	4	4	1	4	8	4	0	6	6	3	9	8
Pop. Mean	24	24	24	24	25	25	24	25	25	23	26	25
Std. Deviation	2.46	2.28	2.23	2.21	2.59	2.70	2.88	2.81	2.82	3.14	2.94	3.02
% CO2 > 27	10%	10%	3%	9%	18%	9%	0%	15%	15%	7%	20%	19%

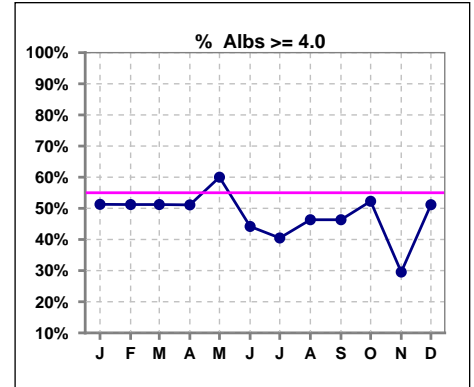


Methodology: a) All labs for 'Adequacy of Dialysis', 'Nutrition', 'Osteodystrophy', 'Anemia' and 'Diabetes' based on last value of month; b) BP's and #L processed are average of all values for month; c) Access data takes last access of month; d) Values for SGA and 'Infection Control' use most recent result.

*Albumin values use BCG method - as of July 2001

II. NUTRITION

	Jan	Feb	Mar	Apr	May	Jun	Jul	Aug	Sep	Oct	Nov	Dec
# Albumin	39	41	41	45	45	43	42	41	41	44	44	43
# Albumin >= 4.0	20	21	21	23	27	19	17	19	19	23	13	22
Pop. Mean	3.9	3.9	3.9	3.9	4.0	3.9	3.8	3.8	3.9	3.9	3.8	3.9
Std. Deviation	0.35	0.36	0.45	0.34	0.31	0.39	0.31	0.38	0.36	0.37	0.37	0.47
% Alb >= 4.0	51%	51%	51%	51%	60%	44%	40%	46%	46%	52%	30%	51%

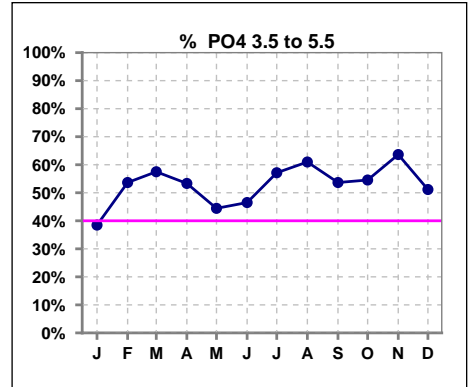


Methodology: a) All labs for 'Adequacy of Dialysis', 'Nutrition', 'Osteodystrophy', 'Anemia' and 'Diabetes' based on last value of month; b) BP's and #L processed are average of all values for month; c) Access data takes last access of month; d) Values for SGA and 'Infection Control' use most recent result.

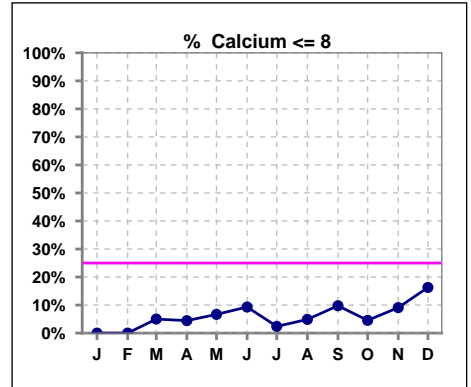
Lab methodology for PTH changed January 2012

III. OSTEODYSTROPHY

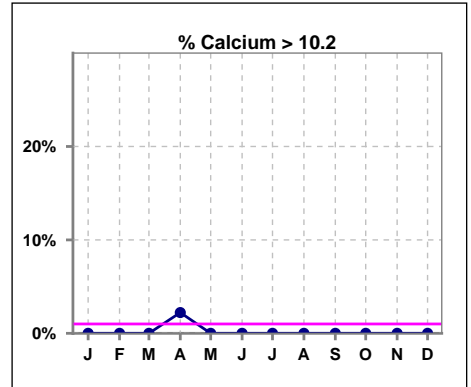
	Jan	Feb	Mar	Apr	May	Jun	Jul	Aug	Sep	Oct	Nov	Dec
# PO4	39	41	40	45	45	43	42	41	41	44	44	43
# PO4 3.5 to 5.5	15	22	23	24	20	20	24	25	22	24	28	22
Pop. Mean	5.5	5.6	5.4	5.5	5.5	5.6	5.6	5.3	5.2	5.3	5.2	5.5
Std. Deviation	1.29	1.65	1.73	1.09	1.57	1.50	1.46	1.31	1.60	1.47	1.45	1.36
% PO4 3.5 to 5.5	38%	54%	58%	53%	44%	47%	57%	61%	54%	55%	64%	51%



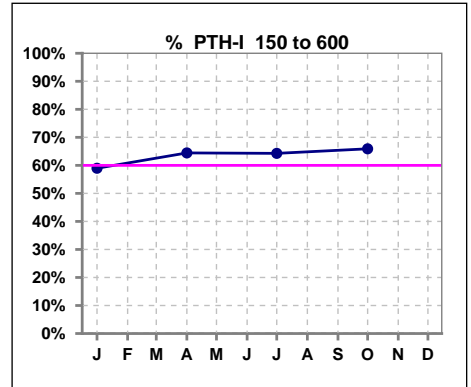
	Jan	Feb	Mar	Apr	May	Jun	Jul	Aug	Sep	Oct	Nov	Dec
# Calcium	39	41	40	45	45	43	42	41	41	44	44	43
# Calcium <= 8	0	0	2	2	3	4	1	2	4	2	4	7
Pop. Mean	9.1	9.3	9.1	9.2	9.2	9.0	9.0	8.9	8.9	8.9	8.8	8.8
Std. Deviation	0.51	0.47	0.62	0.64	0.57	0.59	0.52	0.50	0.60	0.52	0.62	0.67
% Calcium <= 8	0%	0%	5%	4%	7%	9%	2%	5%	10%	5%	9%	16%



	Jan	Feb	Mar	Apr	May	Jun	Jul	Aug	Sep	Oct	Nov	Dec
# Calcium	39	41	40	45	45	43	42	41	41	44	44	43
# Calcium > 10.2	0	0	0	1	0	0	0	0	0	0	0	0
Pop. Mean	9.1	9.3	9.1	9.2	9.2	9.0	9.0	8.9	8.9	8.9	8.8	8.8
Std. Deviation	0.51	0.47	0.62	0.64	0.57	0.59	0.52	0.50	0.60	0.52	0.62	0.67
% Calcium > 10.2	0%	0%	0%	2%	0%	0%	0%	0%	0%	0%	0%	0%



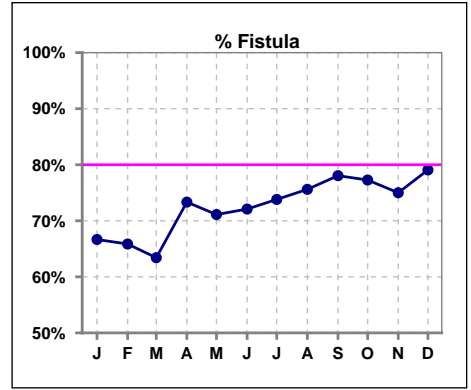
	Jan	Feb	Mar	Apr	May	Jun	Jul	Aug	Sep	Oct	Nov	Dec
# PTH-I	39			45			42			44		
# PTH-I 150 to 600	23			29			27			29		
Pop. Mean	482			419			429			462		
Std. Deviation	323			322			230			271		
% PTH-I 150 to 600	59%			64%			64%			66%		



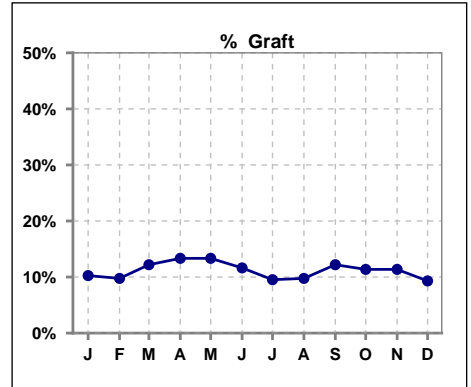
Methodology: a) All labs for 'Adequacy of Dialysis', 'Nutrition', 'Osteodystrophy', 'Anemia' and 'Diabetes' based on last value of month; b) BP's and #L processed are average of all values for month; c) Access data takes last access of month; d) Values for SGA and 'Infection Control' use most recent result.

IV. ACCESS

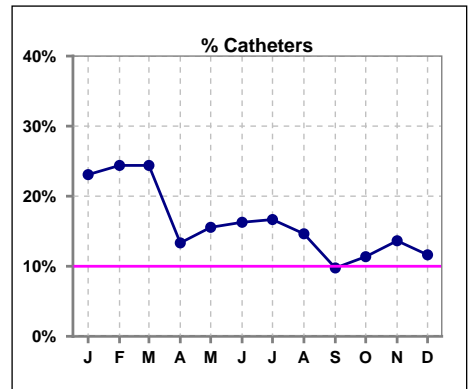
	Jan	Feb	Mar	Apr	May	Jun	Jul	Aug	Sep	Oct	Nov	Dec
# Access	39	41	41	45	45	43	42	41	41	44	44	43
# Fistula	26	27	26	33	32	31	31	31	32	34	33	34
% Fistula	67%	66%	63%	73%	71%	72%	74%	76%	78%	77%	75%	79%



	Jan	Feb	Mar	Apr	May	Jun	Jul	Aug	Sep	Oct	Nov	Dec
# Access	39	41	41	45	45	43	42	41	41	44	44	43
# Graft	4	4	5	6	6	5	4	4	5	5	5	4
% Graft	10%	10%	12%	13%	13%	12%	10%	10%	12%	11%	11%	9%



	Jan	Feb	Mar	Apr	May	Jun	Jul	Aug	Sep	Oct	Nov	Dec
# Access	39	41	41	45	45	43	42	41	41	44	44	43
# Catheters	9	10	10	6	7	7	7	6	4	5	6	5
% Catheters	23%	24%	24%	13%	16%	16%	17%	15%	10%	11%	14%	12%



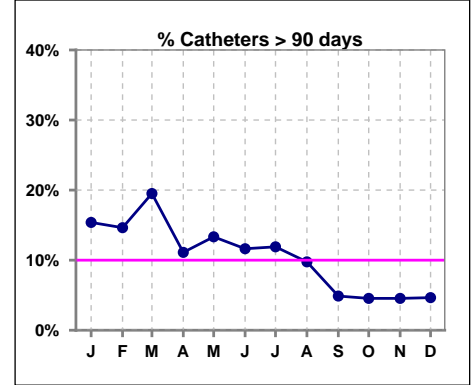
Methodology: a) All labs for 'Adequacy of Dialysis', 'Nutrition', 'Osteodystrophy', 'Anemia' and 'Diabetes' based on last value of month; b) BP's and #L processed are average of all values for month; c) Access data takes last access of month; d) Values for SGA and 'Infection Control' use most recent result.

IV. ACCESS - CONT.

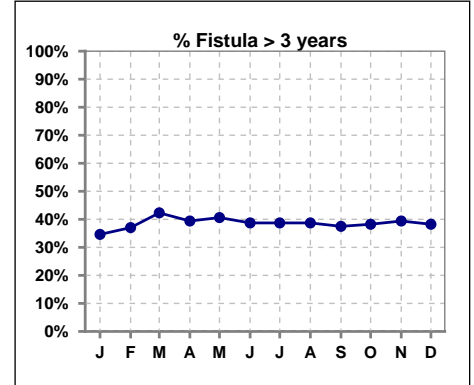
Catheters > 90 days

	Jan	Feb	Mar	Apr	May	Jun	Jul	Aug	Sep	Oct	Nov	Dec
# Access	39	41	41	45	45	43	42	41	41	44	44	43
# Catheters	6	6	8	5	6	5	5	4	2	2	2	2
% Catheters	15%	15%	20%	11%	13%	12%	12%	10%	5%	5%	5%	5%

Definition: Catheter in use on last treatment of the month



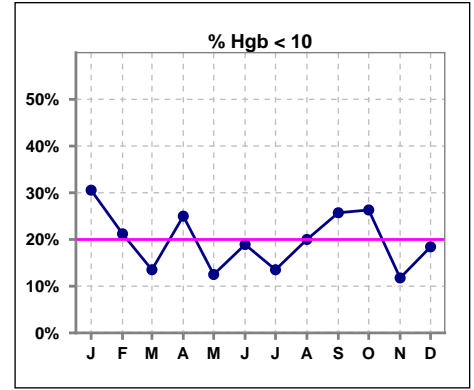
	Jan	Feb	Mar	Apr	May	Jun	Jul	Aug	Sep	Oct	Nov	Dec
# Fistula	26	27	26	33	32	31	31	31	32	34	33	34
# Fistula > 3 yrs	9	10	11	13	13	12	12	12	12	13	13	13
% Fistula > 3 yrs	35%	37%	42%	39%	41%	39%	39%	39%	38%	38%	39%	38%



V. ANEMIA

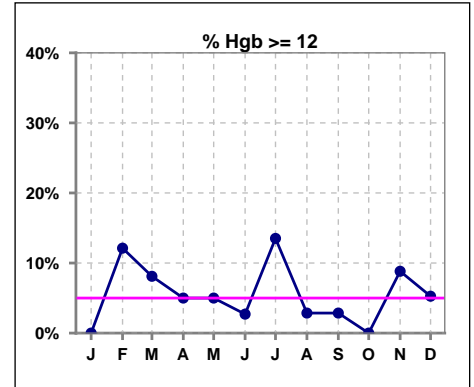
	Jan	Feb	Mar	Apr	May	Jun	Jul	Aug	Sep	Oct	Nov	Dec
# Hgb	36	33	37	40	40	37	37	35	35	38	34	38
# Hgb < 10	11	7	5	10	5	7	5	7	9	10	4	7
Pop. Mean	10.4	10.8	10.9	10.7	10.9	10.8	10.8	10.6	10.5	10.5	10.8	10.7
Std. Deviation	1.1	1.1	1.0	1.2	1.2	1.1	1.2	1.0	0.9	1.0	1.1	1.0
% Hgb < 10	31%	21%	14%	25%	13%	19%	14%	20%	26%	26%	12%	18%

Note: Excludes patients who received no ESA in month.



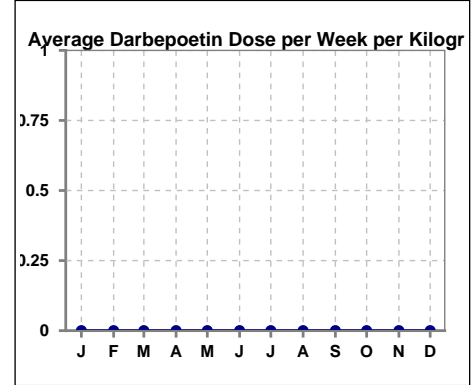
	Jan	Feb	Mar	Apr	May	Jun	Jul	Aug	Sep	Oct	Nov	Dec
# Hgb	36	33	37	40	40	37	37	35	35	38	34	38
# Hgb >= 12	0	4	3	2	2	1	5	1	1	0	3	2
Pop. Mean	10.4	10.8	10.9	10.7	10.9	10.8	10.8	10.6	10.5	10.5	10.8	10.7
Std. Deviation	1.1	1.1	1.0	1.2	1.2	1.1	1.2	1.0	0.9	1.0	1.1	1.0
% Hgb >= 12	0%	12%	8%	5%	5%	3%	14%	3%	3%	0%	9%	5%

Note: Excludes patients who received no ESA in month.



Average Darbepoetin Dose per Week per Kilogram

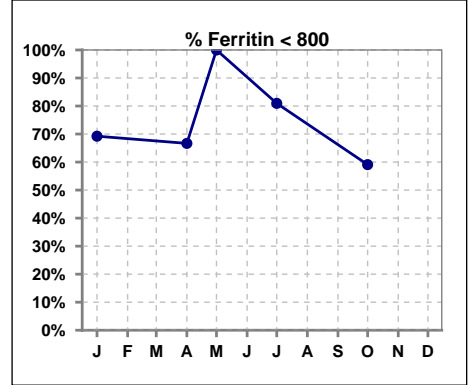
	Jan	Feb	Mar	Apr	May	Jun	Jul	Aug	Sep	Oct	Nov	Dec
# Average Darbepoetin	0	0	0	0	0	0	0	0	0	0	0	0



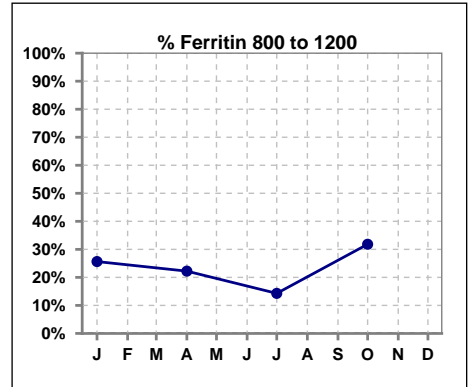
V. ANEMIA - CONT.

Iron Profile

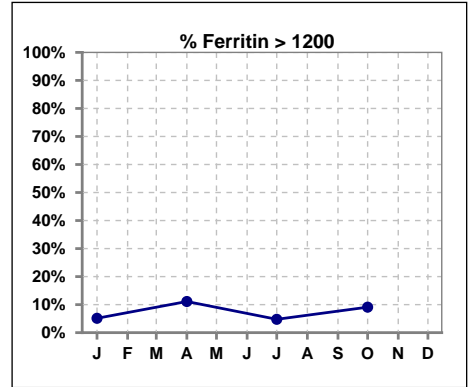
	Jan	Feb	Mar	Apr	May	Jun	Jul	Aug	Sep	Oct	Nov	Dec
# Ferritin	39			45	1		42			44		
# Ferritin < 800	27			30	1		34			26		
Pop. Mean	616			613	69		548			676		
Std. Deviation	355			401	0		348			431		
% Ferritin < 800	69%			67%	100%		81%			59%		



	Jan	Feb	Mar	Apr	May	Jun	Jul	Aug	Sep	Oct	Nov	Dec
# Ferritin	39			45	1		42			44		
# Ferritin 800 to 1200	10			10			6			14		
Pop. Mean	616			613	69		548			676		
Std. Deviation	355			401	0		348			431		
% Ferritin 800 to 1200	26%			22%			14%			32%		



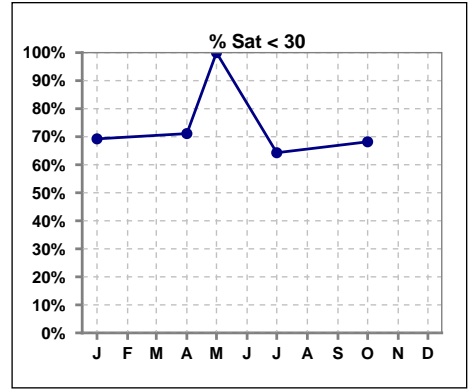
	Jan	Feb	Mar	Apr	May	Jun	Jul	Aug	Sep	Oct	Nov	Dec
# Ferritin	39			45	1		42			44		
# Ferritin > 1200	2			5			2			4		
Pop. Mean	616			613	69		548			676		
Std. Deviation	355			401	0		348			431		
% Ferritin > 1200	5%			11%			5%			9%		



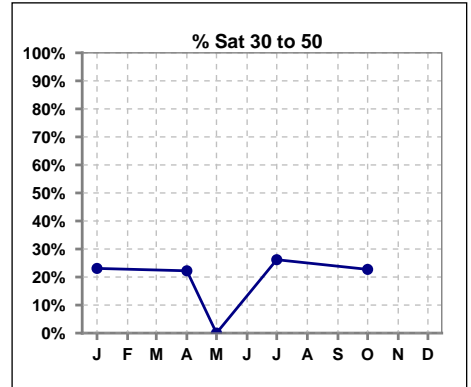
Methodology: a) All labs for 'Adequacy of Dialysis', 'Nutrition', 'Osteodystrophy', 'Anemia' and 'Diabetes' based on last value of month; b) BP's and #L processed are average of all values for month; c) Access data takes last access of month; d) Values for SGA and 'Infection Control' use most recent result.

V. ANEMIA - CONT.

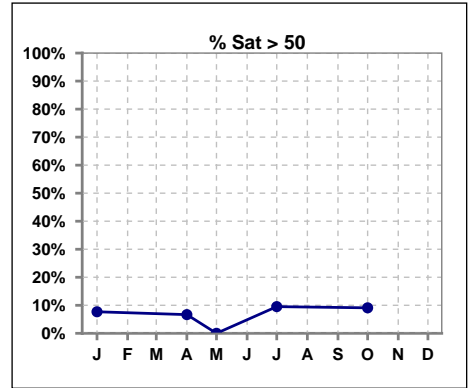
	Jan	Feb	Mar	Apr	May	Jun	Jul	Aug	Sep	Oct	Nov	Dec
# % Sat	39			45	1		42			44		
# % Sat < 30	27			32	1		27			30		
Pop. Mean	28			26	27		31			29		
Std. Deviation	17			12	0		18			14		
% % Sat < 30	69%			71%	100%		64%			68%		



	Jan	Feb	Mar	Apr	May	Jun	Jul	Aug	Sep	Oct	Nov	Dec
# % Sat	39			45	1		42			44		
# % Sat 30 to 50	9			10	0		11			10		
Pop. Mean	28			26	27		31			29		
Std. Deviation	17			12	0		18			14		
% % Sat 30 to 50	23%			22%	0%		26%			23%		



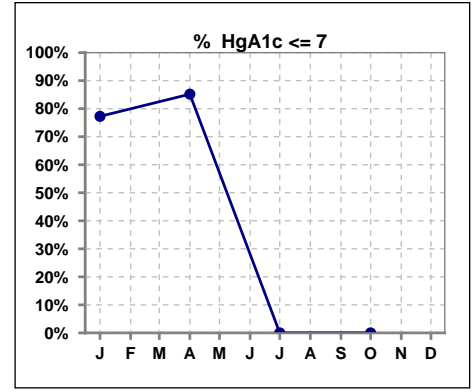
	Jan	Feb	Mar	Apr	May	Jun	Jul	Aug	Sep	Oct	Nov	Dec
# % Sat	39			45	1		42			44		
# % Sat > 50	3			3	0		4			4		
Pop. Mean	28			26	27		31			29		
Std. Deviation	17			12	0		18			14		
% % Sat > 50	8%			7%	0%		10%			9%		



Methodology: a) All labs for 'Adequacy of Dialysis', 'Nutrition', 'Osteodystrophy', 'Anemia' and 'Diabetes' based on last value of month; b) BP's and #L processed are average of all values for month; c) Access data takes last access of month; d) Values for SGA and 'Infection Control' use most recent result.

VI. Diabetes

	Jan	Feb	Mar	Apr	May	Jun	Jul	Aug	Sep	Oct	Nov	Dec
# HgA1c	22			27			0			0		
# HgA1c <= 7	17			23			0			0		
Pop. Mean	6.2			6.2			0			0		
Std. Deviation	1.24			1.33			0			0		
% HgA1c <= 7	77%			85%			0%			0%		

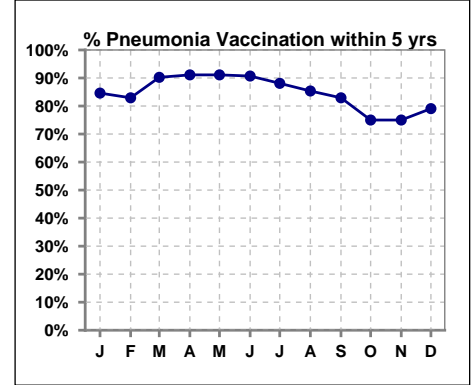


Methodology: a) All labs for 'Adequacy of Dialysis', 'Nutrition', 'Osteodystrophy', 'Anemia' and 'Diabetes' based on last value of month; b) BP's and #L processed are average of all values for month; c) Access data takes last access of month; d) Values for SGA and 'Infection Control' use most recent result.

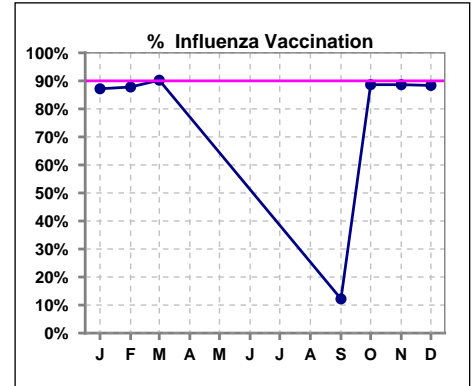
VII. Infection Control

Pneumonia vaccination within the past five years

	Jan	Feb	Mar	Apr	May	Jun	Jul	Aug	Sep	Oct	Nov	Dec
# Patient	39	41	41	45	45	43	42	41	41	44	44	43
# Pneumonia	33	34	37	41	41	39	37	35	34	33	33	34
% Pneumonia	85%	83%	90%	91%	91%	91%	88%	85%	83%	75%	75%	79%



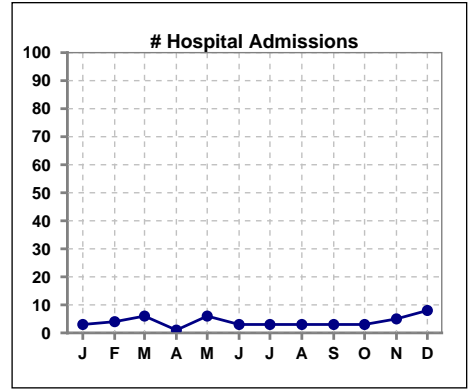
	Jan	Feb	Mar	Apr	May	Jun	Jul	Aug	Sep	Oct	Nov	Dec
# Patient	39	41	41						41	44	44	43
# Influenza	34	36	37						5	39	39	38
% Influenza	87%	88%	90%						12%	89%	89%	88%



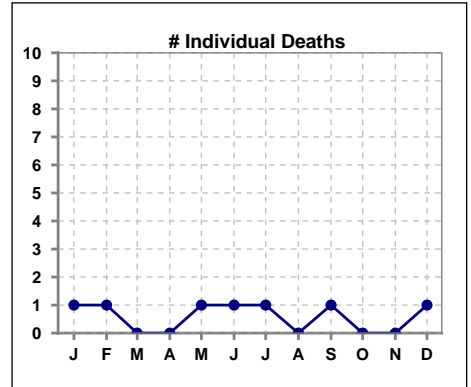
Methodology: a) All labs for 'Adequacy of Dialysis', 'Nutrition', 'Osteodystrophy', 'Anemia' and 'Diabetes' based on last value of month; b) BP's and #L processed are average of all values for month; c) Access data takes last access of month; d) Values for SGA and 'Infection Control' use most recent result.

VIII. Outcome measures

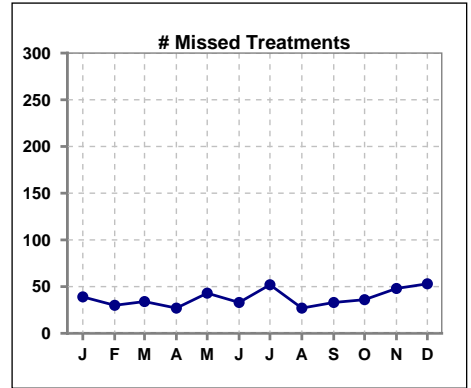
	Jan	Feb	Mar	Apr	May	Jun	Jul	Aug	Sep	Oct	Nov	Dec
# Patient	39	41	41	45	45	43	42	41	41	44	44	43
# Hospital Admissions	3	4	6	1	6	3	3	3	3	3	5	8



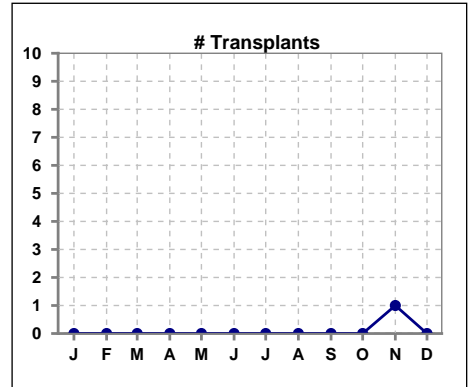
	Jan	Feb	Mar	Apr	May	Jun	Jul	Aug	Sep	Oct	Nov	Dec
# Patient	39	41	41	45	45	43	42	41	41	44	44	43
# Individual Deaths	1	1	0	0	1	1	1	0	1	0	0	1



	Jan	Feb	Mar	Apr	May	Jun	Jul	Aug	Sep	Oct	Nov	Dec
# Patient	39	41	41	45	45	43	42	41	41	44	44	43
# Missed Treatments	39	30	34	27	43	33	52	27	33	36	48	53



	Jan	Feb	Mar	Apr	May	Jun	Jul	Aug	Sep	Oct	Nov	Dec
# Patient	39	41	41	45	45	43	42	41	41	44	44	43
# Transplants	0	0	0	0	0	0	0	0	0	0	1	0



Methodology: a) All labs for 'Adequacy of Dialysis', 'Nutrition', 'Osteodystrophy', 'Anemia' and 'Diabetes' based on last value of month; b) BP's and #L processed are average of all values for month; c) Access data takes last access of month; d) Values for SGA and 'Infection Control' use most recent result.