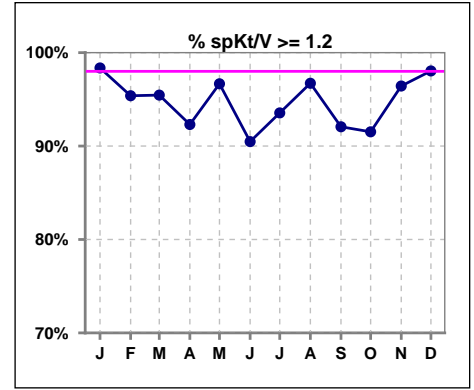
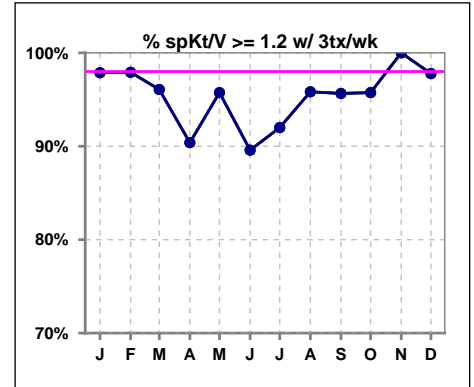


I. ADEQUACY OF DIALYSIS

	Jan	Feb	Mar	Apr	May	Jun	Jul	Aug	Sep	Oct	Nov	Dec
# spKt/V	61	65	66	65	60	63	62	61	63	59	56	51
# spKt/V >= 1.2	60	62	63	60	58	57	58	59	58	54	54	50
Pop. Mean	1.67	1.68	1.59	1.58	1.52	1.50	1.58	1.55	1.56	1.56	1.57	1.53
Std. Deviation	0.35	0.40	0.36	0.44	0.32	0.30	0.35	0.32	0.38	0.40	0.34	0.34
% spKt/V >= 1.2	98%	95%	95%	92%	97%	90%	94%	97%	92%	92%	96%	98%



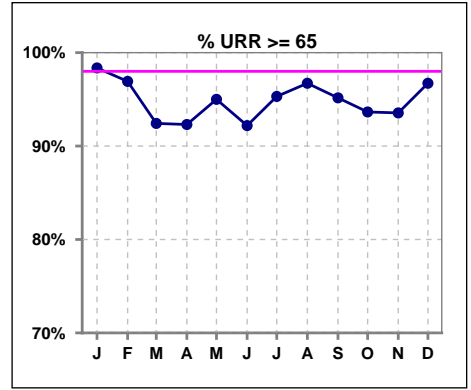
	Jan	Feb	Mar	Apr	May	Jun	Jul	Aug	Sep	Oct	Nov	Dec
# spKt/V w/ 3tx/wk	47	48	51	52	47	48	50	48	46	47	47	45
# spKt/V >= 1.2 w/3tx/wk	46	47	49	47	45	43	46	46	44	45	47	44
Pop. Mean	1.64	1.67	1.59	1.57	1.52	1.49	1.58	1.57	1.58	1.57	1.59	1.53
Std. Deviation	0.34	0.36	0.36	0.48	0.33	0.32	0.36	0.34	0.37	0.41	0.33	0.35
% >= 1.2 w/3tx/wk	98%	98%	96%	90%	96%	90%	92%	96%	96%	96%	100%	98%



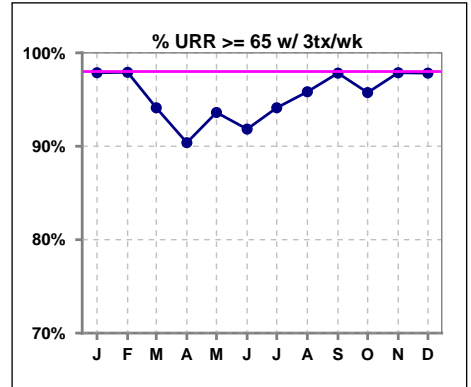
Methodology: a) All labs for 'Adequacy of Dialysis', 'Nutrition', 'Osteodystrophy', 'Anemia' and 'Diabetes' based on last value of month; b) BP's and #L processed are average of all values for month; c) Access data takes last access of month; d) Values for SGA and 'Infection Control' use most recent result.

I. ADEQUACY OF DIALYSIS - CONT.

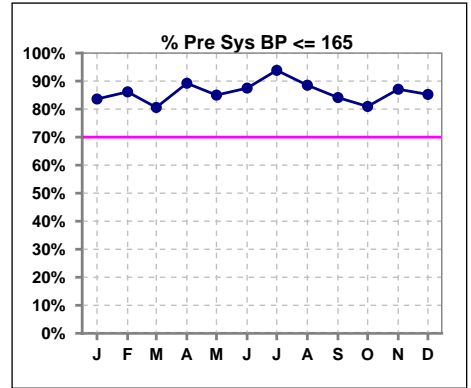
	Jan	Feb	Mar	Apr	May	Jun	Jul	Aug	Sep	Oct	Nov	Dec
# URR	61	65	66	65	60	64	64	61	62	63	62	61
# URR >= 65	60	63	61	60	57	59	61	59	59	59	58	59
Pop. Mean	76	76	74	73	73	73	74	74	74	73	74	74
Std. Deviation	6.83	7.63	8.61	7.77	7.43	6.28	6.20	6.17	6.99	6.40	7.23	6.21
% URR >= 65	98%	97%	92%	92%	95%	92%	95%	97%	95%	94%	94%	97%



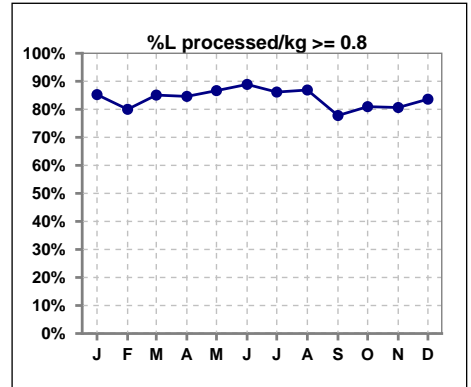
	Jan	Feb	Mar	Apr	May	Jun	Jul	Aug	Sep	Oct	Nov	Dec
# URR w/ 3tx/wk	47	48	51	52	47	49	51	48	46	47	47	46
# URR>=65 w/ 3tx/wk	46	47	48	47	44	45	48	46	45	45	46	45
Pop. Mean	75	76	74	73	72	72	74	74	74	74	75	73
Std. Deviation	6.93	6.58	8.95	8.28	7.75	6.50	6.39	6.37	6.15	5.87	5.91	5.75
% URR>=65 w/ 3tx/wk	98%	98%	94%	90%	94%	92%	94%	96%	98%	96%	98%	98%



	Jan	Feb	Mar	Apr	May	Jun	Jul	Aug	Sep	Oct	Nov	Dec
# Pre Sys BP	61	65	67	65	60	64	65	61	63	63	62	61
# Pre Sys BP <= 165	52	56	54	60	53	56	61	54	53	51	54	53
Pop. Mean	150	146	146	147	146	144	143	145	146	148	148	147
Std. Deviation	19.0	18.6	19.1	16.2	17.5	16.4	15.1	15.6	16.9	17.0	15.1	15.9
% Pre Sys BP <=165	84%	86%	81%	89%	85%	88%	94%	89%	84%	81%	87%	85%



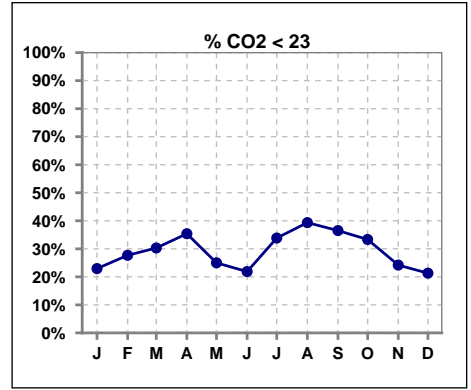
	Jan	Feb	Mar	Apr	May	Jun	Jul	Aug	Sep	Oct	Nov	Dec
# L processed/kg	61	65	67	65	60	63	65	61	63	63	62	61
# L processed/kg>=0.8	52	52	57	55	52	56	56	53	49	51	50	51
Pop. Mean	1	1	1	1	1	1	1	1	1	1	1	1
Std. Deviation	0.3	0.3	0.3	0.3	0.3	0.3	0.3	0.3	0.3	0.3	0.3	0.3
% L processed/kg>=0.8	85%	80%	85%	85%	87%	89%	86%	87%	78%	81%	81%	84%



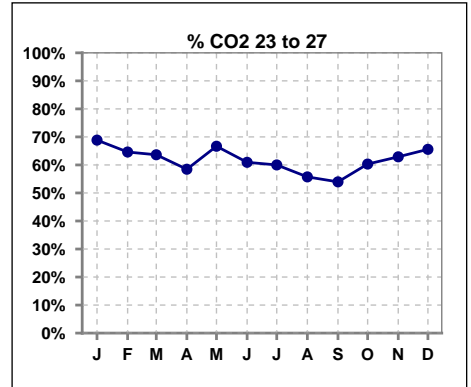
Methodology: a) All labs for 'Adequacy of Dialysis', 'Nutrition', 'Osteodystrophy', 'Anemia' and 'Diabetes' based on last value of month; b) BP's and #L processed are average of all values for month; c) Access data takes last access of month; d) Values for SGA and 'Infection Control' use most recent result.

I. ADEQUACY OF DIALYSIS - CONT.

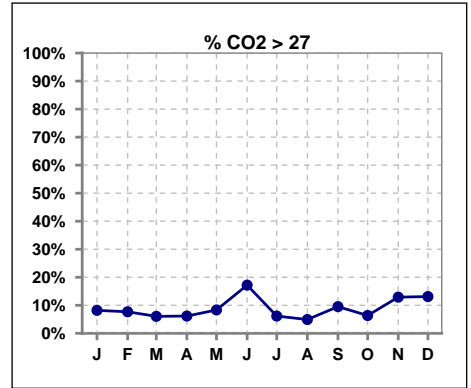
	Jan	Feb	Mar	Apr	May	Jun	Jul	Aug	Sep	Oct	Nov	Dec
# CO2	61	65	66	65	60	64	65	61	63	63	62	61
# CO2 < 23	14	18	20	23	15	14	22	24	23	21	15	13
Pop. Mean	24	23	23	23	24	25	24	23	23	24	25	24
Std. Deviation	2.60	2.77	2.72	2.82	2.52	2.75	2.54	2.99	3.29	3.02	2.92	2.96
% CO2 < 23	23%	28%	30%	35%	25%	22%	34%	39%	37%	33%	24%	21%



	Jan	Feb	Mar	Apr	May	Jun	Jul	Aug	Sep	Oct	Nov	Dec
# CO2	61	65	66	65	60	64	65	61	63	63	62	61
# CO2 23 to 27	42	42	42	38	40	39	39	34	34	38	39	40
Pop. Mean	24	23	23	23	24	25	24	23	23	24	25	24
Std. Deviation	2.60	2.77	2.72	2.82	2.52	2.75	2.54	2.99	3.29	3.02	2.92	2.96
% CO2 23 to 27	69%	65%	64%	58%	67%	61%	60%	56%	54%	60%	63%	66%



	Jan	Feb	Mar	Apr	May	Jun	Jul	Aug	Sep	Oct	Nov	Dec
# CO2	61	65	66	65	60	64	65	61	63	63	62	61
# CO2 > 27	5	5	4	4	5	11	4	3	6	4	8	8
Pop. Mean	24	23	23	23	24	25	24	23	23	24	25	24
Std. Deviation	2.60	2.77	2.72	2.82	2.52	2.75	2.54	2.99	3.29	3.02	2.92	2.96
% CO2 > 27	8%	8%	6%	6%	8%	17%	6%	5%	10%	6%	13%	13%

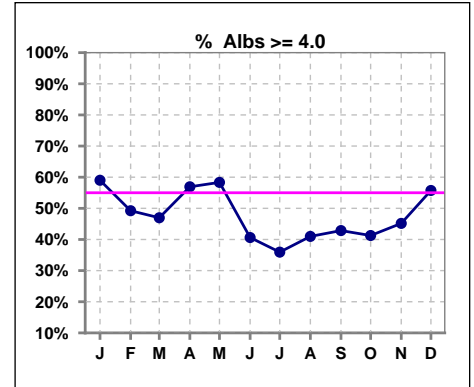


Methodology: a) All labs for 'Adequacy of Dialysis', 'Nutrition', 'Osteodystrophy', 'Anemia' and 'Diabetes' based on last value of month; b) BP's and #L processed are average of all values for month; c) Access data takes last access of month; d) Values for SGA and 'Infection Control' use most recent result.

*Albumin values use BCG method - as of July 2001

II. NUTRITION

	Jan	Feb	Mar	Apr	May	Jun	Jul	Aug	Sep	Oct	Nov	Dec
# Albumin	61	65	66	65	60	64	64	61	63	63	62	61
# Albumin >= 4.0	36	32	31	37	35	26	23	25	27	26	28	34
Pop. Mean	4.0	3.9	3.9	3.9	4.0	3.8	3.8	3.8	3.8	3.8	3.8	4.0
Std. Deviation	0.33	0.30	0.27	0.33	0.30	0.36	0.37	0.40	0.35	0.37	0.39	0.37
% Alb >= 4.0	59%	49%	47%	57%	58%	41%	36%	41%	43%	41%	45%	56%

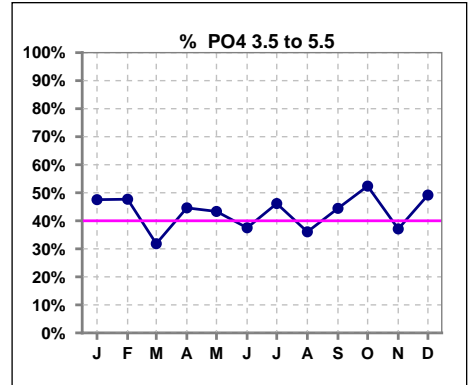


Methodology: a) All labs for 'Adequacy of Dialysis', 'Nutrition', 'Osteodystrophy', 'Anemia' and 'Diabetes' based on last value of month; b) BP's and #L processed are average of all values for month; c) Access data takes last access of month; d) Values for SGA and 'Infection Control' use most recent result.

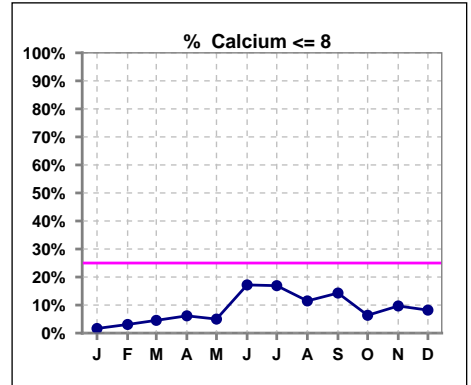
Lab methodology for PTH changed January 2012

III. OSTEODYSTROPHY

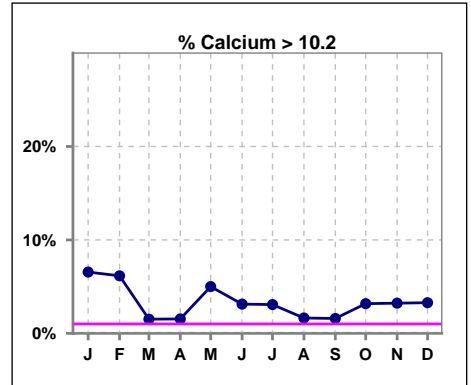
	Jan	Feb	Mar	Apr	May	Jun	Jul	Aug	Sep	Oct	Nov	Dec
# PO4	61	65	66	65	60	64	65	61	63	63	62	61
# PO4 3.5 to 5.5	29	31	21	29	26	24	30	22	28	33	23	30
Pop. Mean	5.8	5.7	6.3	6.0	5.9	6.2	5.9	6.0	5.9	5.8	6.0	5.9
Std. Deviation	1.87	1.76	2.07	2.07	2.06	1.83	1.66	1.82	1.86	1.72	1.67	1.75
% PO4 3.5 to 5.5	48%	48%	32%	45%	43%	38%	46%	36%	44%	52%	37%	49%



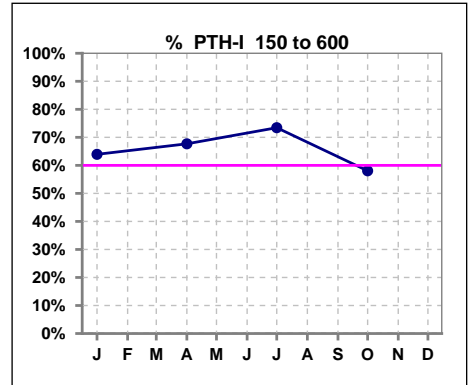
	Jan	Feb	Mar	Apr	May	Jun	Jul	Aug	Sep	Oct	Nov	Dec
# Calcium	61	65	66	65	60	64	65	61	63	63	62	61
# Calcium <= 8	1	2	3	4	3	11	11	7	9	4	6	5
Pop. Mean	9.2	9.2	9.1	9.1	9.2	8.9	8.9	8.9	8.9	9.0	9.0	9.1
Std. Deviation	0.75	0.80	0.69	0.65	0.68	0.76	0.76	0.78	0.70	0.70	0.73	0.72
% Calcium <= 8	2%	3%	5%	6%	5%	17%	17%	11%	14%	6%	10%	8%



	Jan	Feb	Mar	Apr	May	Jun	Jul	Aug	Sep	Oct	Nov	Dec
# Calcium	61	65	66	65	60	64	65	61	63	63	62	61
# Calcium > 10.2	4	4	1	1	3	2	2	1	1	2	2	2
Pop. Mean	9.2	9.2	9.1	9.1	9.2	8.9	8.9	8.9	8.9	9.0	9.0	9.1
Std. Deviation	0.75	0.80	0.69	0.65	0.68	0.76	0.76	0.78	0.70	0.70	0.73	0.72
% Calcium > 10.2	7%	6%	2%	2%	5%	3%	3%	2%	2%	3%	3%	3%



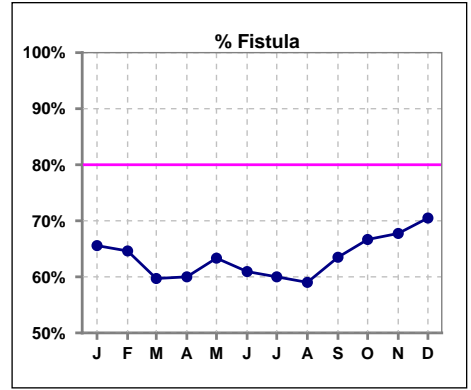
	Jan	Feb	Mar	Apr	May	Jun	Jul	Aug	Sep	Oct	Nov	Dec
# PTH-I	61			65			64			62		
# PTH-I 150 to 600	39			44			47			36		
Pop. Mean	411			454			474			470		
Std. Deviation	338			380			348			423		
% PTH-I 150 to 600	64%			68%			73%			58%		



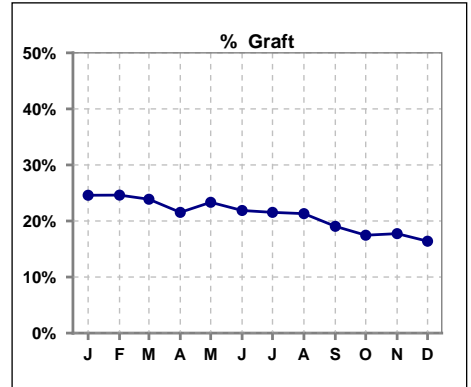
Methodology: a) All labs for 'Adequacy of Dialysis', 'Nutrition', 'Osteodystrophy', 'Anemia' and 'Diabetes' based on last value of month; b) BP's and #L processed are average of all values for month; c) Access data takes last access of month; d) Values for SGA and 'Infection Control' use most recent result.

IV. ACCESS

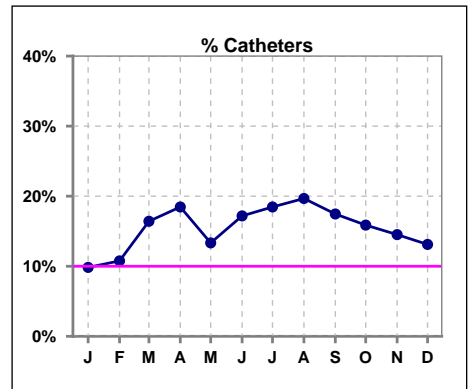
	Jan	Feb	Mar	Apr	May	Jun	Jul	Aug	Sep	Oct	Nov	Dec
# Access	61	65	67	65	60	64	65	61	63	63	62	61
# Fistula	40	42	40	39	38	39	39	36	40	42	42	43
% Fistula	66%	65%	60%	60%	63%	61%	60%	59%	63%	67%	68%	70%



	Jan	Feb	Mar	Apr	May	Jun	Jul	Aug	Sep	Oct	Nov	Dec
# Access	61	65	67	65	60	64	65	61	63	63	62	61
# Graft	15	16	16	14	14	14	14	13	12	11	11	10
% Graft	25%	25%	24%	22%	23%	22%	22%	21%	19%	17%	18%	16%



	Jan	Feb	Mar	Apr	May	Jun	Jul	Aug	Sep	Oct	Nov	Dec
# Access	61	65	67	65	60	64	65	61	63	63	62	61
# Catheters	6	7	11	12	8	11	12	12	11	10	9	8
% Catheters	10%	11%	16%	18%	13%	17%	18%	20%	17%	16%	15%	13%



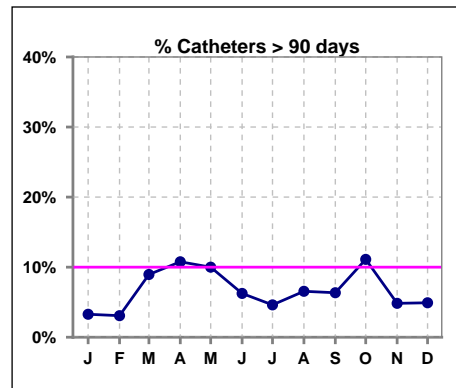
Methodology: a) All labs for 'Adequacy of Dialysis', 'Nutrition', 'Osteodystrophy', 'Anemia' and 'Diabetes' based on last value of month; b) BP's and #L processed are average of all values for month; c) Access data takes last access of month; d) Values for SGA and 'Infection Control' use most recent result.

IV. ACCESS - CONT.

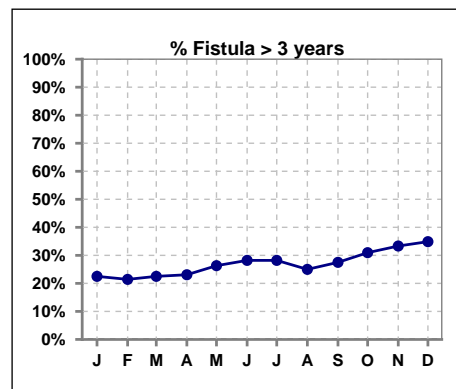
Catheters > 90 days

	Jan	Feb	Mar	Apr	May	Jun	Jul	Aug	Sep	Oct	Nov	Dec
# Access	61	65	67	65	60	64	65	61	63	63	62	61
# Catheters	2	2	6	7	6	4	3	4	4	7	3	3
% Catheters	3%	3%	9%	11%	10%	6%	5%	7%	6%	11%	5%	5%

Definition: Catheter in use on last treatment of the month



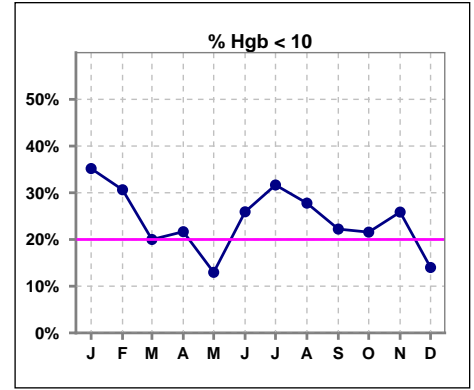
	Jan	Feb	Mar	Apr	May	Jun	Jul	Aug	Sep	Oct	Nov	Dec
# Fistula	40	42	40	39	38	39	39	36	40	42	42	43
# Fistula > 3 yrs	9	9	9	9	10	11	11	9	11	13	14	15
% Fistula > 3 yrs	23%	21%	23%	23%	26%	28%	28%	25%	28%	31%	33%	35%



V. ANEMIA

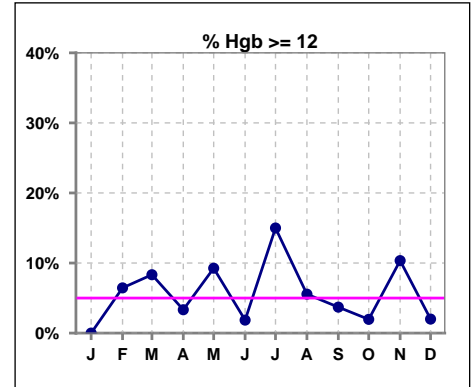
	Jan	Feb	Mar	Apr	May	Jun	Jul	Aug	Sep	Oct	Nov	Dec
# Hgb	54	62	60	60	54	54	60	54	54	51	58	50
# Hgb < 10	19	19	12	13	7	14	19	15	12	11	15	7
Pop. Mean	10.3	10.4	10.6	10.6	10.8	10.4	10.7	10.5	10.5	10.5	10.5	10.7
Std. Deviation	1.2	1.2	1.1	1.1	1.1	1.3	1.6	1.3	1.3	1.2	1.4	1.1
% Hgb < 10	35%	31%	20%	22%	13%	26%	32%	28%	22%	22%	26%	14%

Note: Excludes patients who received no ESA in month.



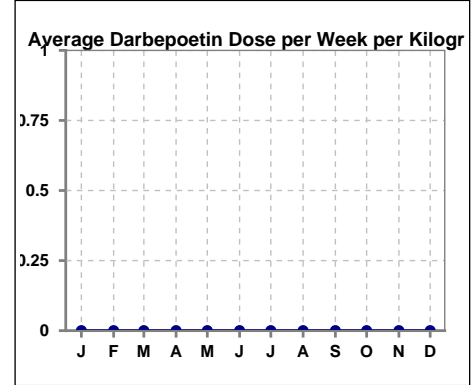
	Jan	Feb	Mar	Apr	May	Jun	Jul	Aug	Sep	Oct	Nov	Dec
# Hgb	54	62	60	60	54	54	60	54	54	51	58	50
# Hgb >= 12	0	4	5	2	5	1	9	3	2	1	6	1
Pop. Mean	10.3	10.4	10.6	10.6	10.8	10.4	10.7	10.5	10.5	10.5	10.5	10.7
Std. Deviation	1.2	1.2	1.1	1.1	1.1	1.3	1.6	1.3	1.3	1.2	1.4	1.1
% Hgb >= 12	0%	6%	8%	3%	9%	2%	15%	6%	4%	2%	10%	2%

Note: Excludes patients who received no ESA in month.



Average Darbepoetin Dose per Week per Kilogram

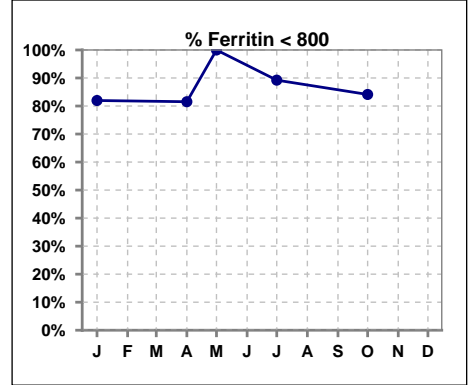
	Jan	Feb	Mar	Apr	May	Jun	Jul	Aug	Sep	Oct	Nov	Dec
# Average Darbepoetin	0	0	0	0	0	0	0	0	0	0	0	0



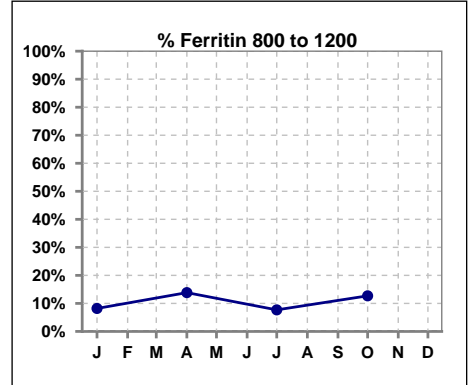
V. ANEMIA - CONT.

Iron Profile

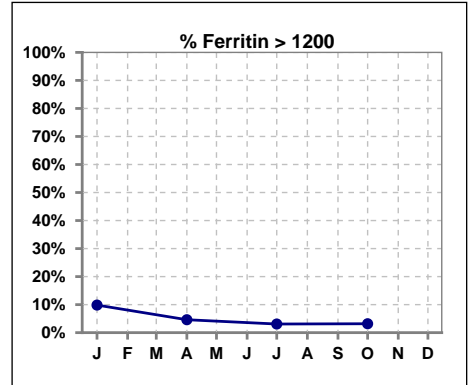
	Jan	Feb	Mar	Apr	May	Jun	Jul	Aug	Sep	Oct	Nov	Dec
# Ferritin	61			65	2		65			63		
# Ferritin < 800	50			53	2		58			53		
Pop. Mean	533			461	445		469			460		
Std. Deviation	402			379	395		380			329		
% Ferritin < 800	82%			82%	100%		89%			84%		



	Jan	Feb	Mar	Apr	May	Jun	Jul	Aug	Sep	Oct	Nov	Dec
# Ferritin	61			65	2		65			63		
# Ferritin 800 to 1200	5			9			5			8		
Pop. Mean	533			461	445		469			460		
Std. Deviation	402			379	395		380			329		
% Ferritin 800 to 1200	8%			14%			8%			13%		



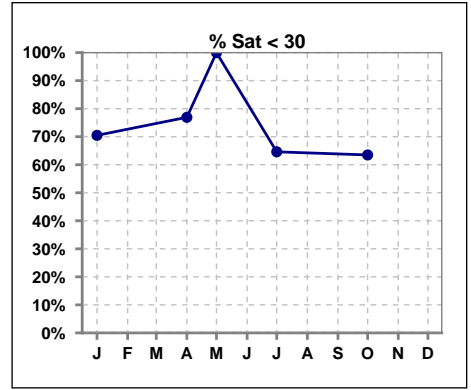
	Jan	Feb	Mar	Apr	May	Jun	Jul	Aug	Sep	Oct	Nov	Dec
# Ferritin	61			65	2		65			63		
# Ferritin > 1200	6			3			2			2		
Pop. Mean	533			461	445		469			460		
Std. Deviation	402			379	395		380			329		
% Ferritin > 1200	10%			5%			3%			3%		



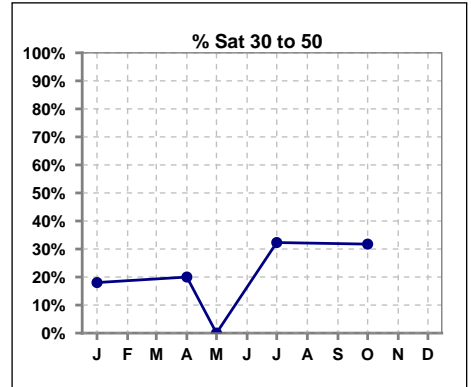
Methodology: a) All labs for 'Adequacy of Dialysis', 'Nutrition', 'Osteodystrophy', 'Anemia' and 'Diabetes' based on last value of month; b) BP's and #L processed are average of all values for month; c) Access data takes last access of month; d) Values for SGA and 'Infection Control' use most recent result.

V. ANEMIA - CONT.

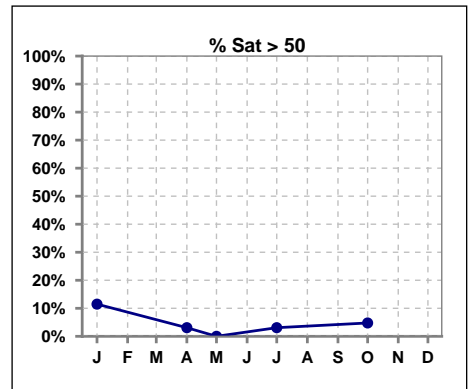
	Jan	Feb	Mar	Apr	May	Jun	Jul	Aug	Sep	Oct	Nov	Dec
# % Sat	61			65	2		65			63		
# % Sat < 30	43			50	2		42			40		
Pop. Mean	28			23	23		26			28		
Std. Deviation	17			10	4		10			13		
% % Sat < 30	70%			77%	100%		65%			63%		



	Jan	Feb	Mar	Apr	May	Jun	Jul	Aug	Sep	Oct	Nov	Dec
# % Sat	61			65	2		65			63		
# % Sat 30 to 50	11			13	0		21			20		
Pop. Mean	28			23	23		26			28		
Std. Deviation	17			10	4		10			13		
% % Sat 30 to 50	18%			20%	0%		32%			32%		



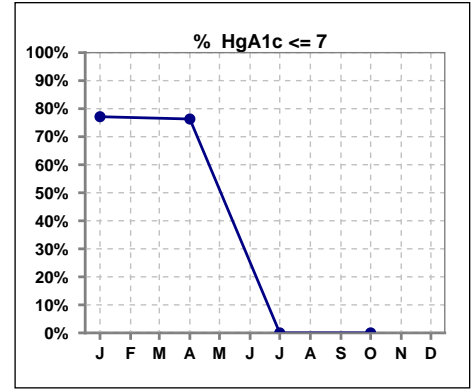
	Jan	Feb	Mar	Apr	May	Jun	Jul	Aug	Sep	Oct	Nov	Dec
# % Sat	61			65	2		65			63		
# % Sat > 50	7			2	0		2			3		
Pop. Mean	28			23	23		26			28		
Std. Deviation	17			10	4		10			13		
% % Sat > 50	11%			3%	0%		3%			5%		



Methodology: a) All labs for 'Adequacy of Dialysis', 'Nutrition', 'Osteodystrophy', 'Anemia' and 'Diabetes' based on last value of month; b) BP's and #L processed are average of all values for month; c) Access data takes last access of month; d) Values for SGA and 'Infection Control' use most recent result.

VI. Diabetes

	Jan	Feb	Mar	Apr	May	Jun	Jul	Aug	Sep	Oct	Nov	Dec
# HgA1c	35			38			0			0		
# HgA1c <= 7	27			29			0			0		
Pop. Mean	6.2			6.3			0			0		
Std. Deviation	1.32			1.21			0			0		
% HgA1c <= 7	77%			76%			0%			0%		

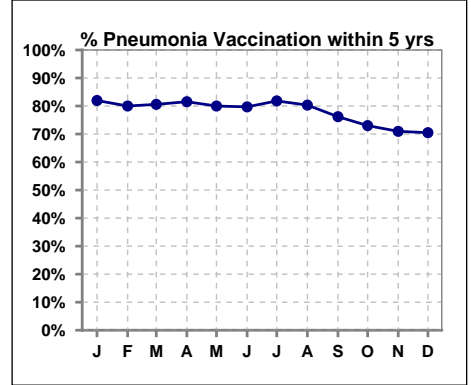


Methodology: a) All labs for 'Adequacy of Dialysis', 'Nutrition', 'Osteodystrophy', 'Anemia' and 'Diabetes' based on last value of month; b) BP's and #L processed are average of all values for month; c) Access data takes last access of month; d) Values for SGA and 'Infection Control' use most recent result.

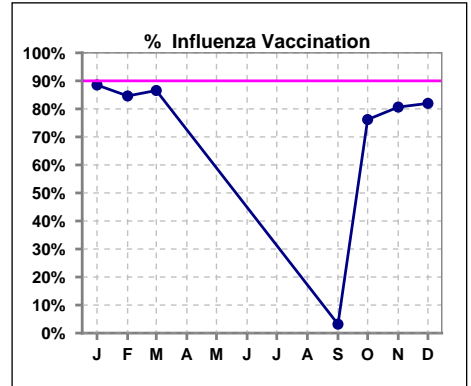
VII. Infection Control

Pneumonia vaccination within the past five years

	Jan	Feb	Mar	Apr	May	Jun	Jul	Aug	Sep	Oct	Nov	Dec
# Patient	61	65	67	65	60	64	66	61	63	63	62	61
# Pneumonia	50	52	54	53	48	51	54	49	48	46	44	43
% Pneumonia	82%	80%	81%	82%	80%	80%	82%	80%	76%	73%	71%	70%



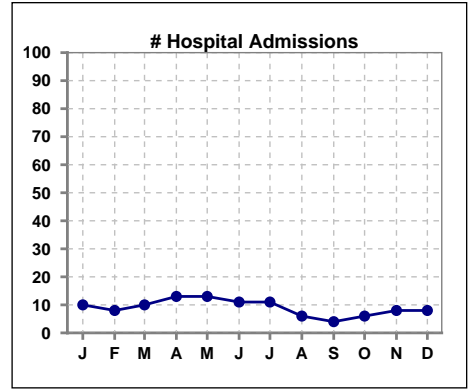
	Jan	Feb	Mar	Apr	May	Jun	Jul	Aug	Sep	Oct	Nov	Dec
# Patient	61	65	67						63	63	62	61
# Influenza	54	55	58						2	48	50	50
% Influenza	89%	85%	87%						3%	76%	81%	82%



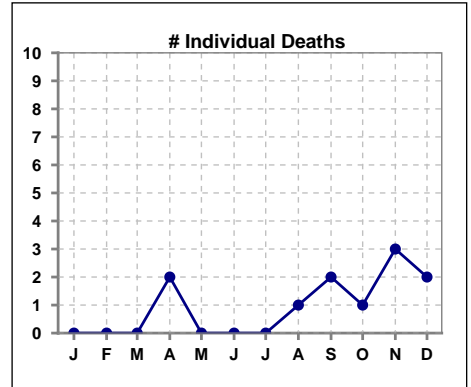
Methodology: a) All labs for 'Adequacy of Dialysis', 'Nutrition', 'Osteodystrophy', 'Anemia' and 'Diabetes' based on last value of month; b) BP's and #L processed are average of all values for month; c) Access data takes last access of month; d) Values for SGA and 'Infection Control' use most recent result.

VIII. Outcome measures

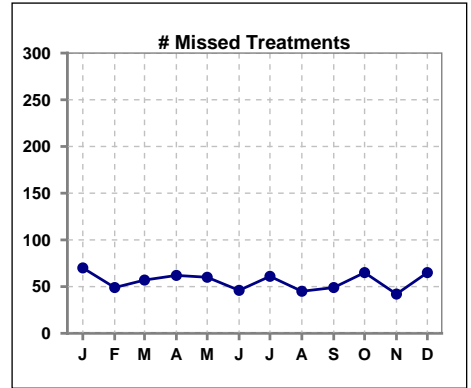
	Jan	Feb	Mar	Apr	May	Jun	Jul	Aug	Sep	Oct	Nov	Dec
# Patient	61	65	67	65	60	64	66	61	63	63	62	61
# Hospital Admissions	10	8	10	13	13	11	11	6	4	6	8	8



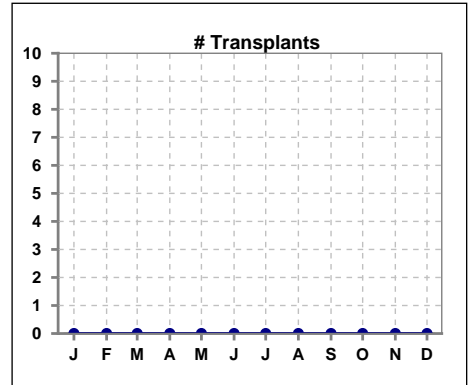
	Jan	Feb	Mar	Apr	May	Jun	Jul	Aug	Sep	Oct	Nov	Dec
# Patient	61	65	67	65	60	64	66	61	63	63	62	61
# Individual Deaths	0	0	0	2	0	0	0	1	2	1	3	2



	Jan	Feb	Mar	Apr	May	Jun	Jul	Aug	Sep	Oct	Nov	Dec
# Patient	61	65	67	65	60	64	66	61	63	63	62	61
# Missed Treatments	70	49	57	62	60	46	61	45	49	65	42	65



	Jan	Feb	Mar	Apr	May	Jun	Jul	Aug	Sep	Oct	Nov	Dec
# Patient	61	65	67	65	60	64	66	61	63	63	62	61
# Transplants	0	0	0	0	0	0	0	0	0	0	0	0



Methodology: a) All labs for 'Adequacy of Dialysis', 'Nutrition', 'Osteodystrophy', 'Anemia' and 'Diabetes' based on last value of month; b) BP's and #L processed are average of all values for month; c) Access data takes last access of month; d) Values for SGA and 'Infection Control' use most recent result.