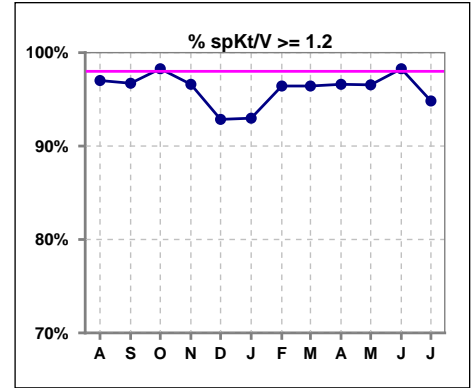
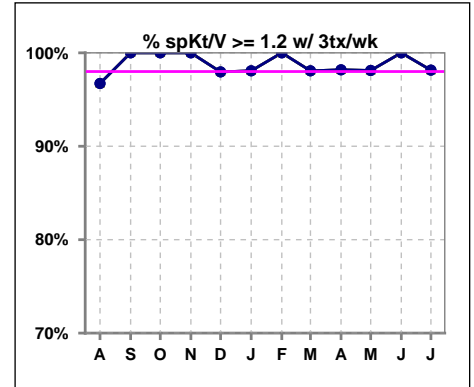


I. ADEQUACY OF DIALYSIS

	Aug	Sep	Oct	Nov	Dec	Jan	Feb	Mar	Apr	May	Jun	Jul
# spKt/V	67	61	58	59	56	57	56	56	59	58	58	58
# spKt/V >= 1.2	65	59	57	57	52	53	54	54	57	56	57	55
Pop. Mean	1.92	1.72	1.65	1.66	1.67	1.62	1.67	1.67	1.64	1.65	1.65	1.72
Std. Deviation	1.55	0.98	0.31	0.30	0.32	0.34	0.29	0.33	0.31	0.30	0.32	0.58
% spKt/V >= 1.2	97%	97%	98%	97%	93%	93%	96%	96%	97%	97%	98%	95%



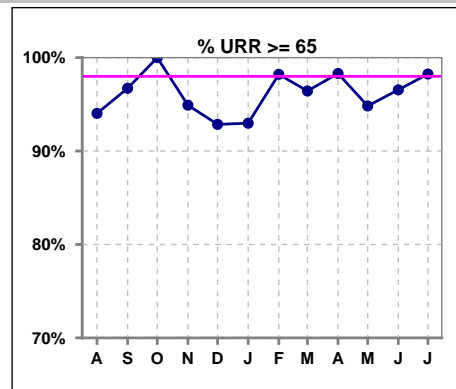
	Aug	Sep	Oct	Nov	Dec	Jan	Feb	Mar	Apr	May	Jun	Jul
# spKt/V w/ 3tx/wk	61	54	52	51	49	52	52	52	55	53	52	54
# spKt/V >= 1.2 w/3tx/wk	59	54	52	51	48	51	52	51	54	52	52	53
Pop. Mean	1.71	1.63	1.66	1.70	1.70	1.67	1.68	1.70	1.66	1.67	1.69	1.75
Std. Deviation	0.98	0.30	0.32	0.29	0.31	0.31	0.28	0.32	0.30	0.29	0.31	0.58
% >= 1.2 w/3tx/wk	97%	100%	100%	100%	98%	98%	100%	98%	98%	98%	100%	98%



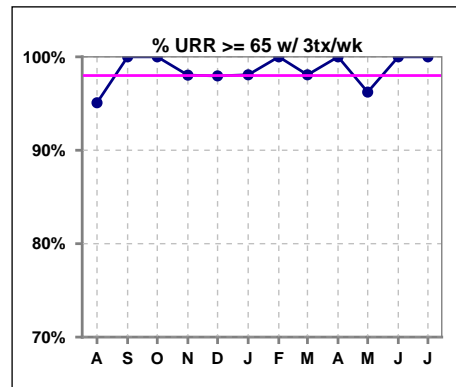
Methodology: a) All labs for 'Adequacy of Dialysis', 'Nutrition', 'Osteodystrophy', 'Anemia' and 'Diabetes' based on last value of month; b) BP's and #L processed are average of all values for month; c) Access data takes last access of month; d) Values for SGA and 'Infection Control' use most recent result.

I. ADEQUACY OF DIALYSIS - CONT.

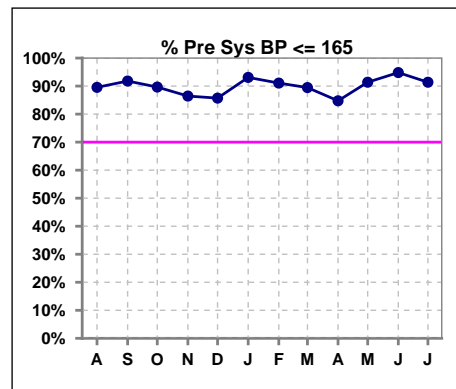
	Aug	Sep	Oct	Nov	Dec	Jan	Feb	Mar	Apr	May	Jun	Jul
# URR	67	61	58	59	56	57	56	56	59	58	58	57
# URR >= 65	63	59	58	56	52	53	55	54	58	55	56	56
Pop. Mean	74	74	75	75	76	75	76	76	75	75	75	75
Std. Deviation	7.07	6.17	5.88	5.67	6.46	7.01	5.41	6.47	6.02	6.04	6.26	6.54
% URR >= 65	94%	97%	100%	95%	93%	93%	98%	96%	98%	95%	97%	98%



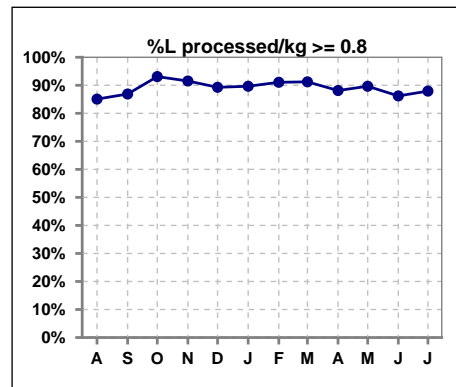
	Aug	Sep	Oct	Nov	Dec	Jan	Feb	Mar	Apr	May	Jun	Jul
# URR w/ 3tx/wk	61	54	52	51	49	52	52	52	55	53	52	53
# URR>=65 w/ 3tx/wk	58	54	52	50	48	51	52	51	55	51	52	53
Pop. Mean	74	75	76	76	76	76	76	76	76	76	76	76
Std. Deviation	6.96	5.39	5.77	5.13	5.49	5.37	4.96	6.06	5.57	5.69	5.68	6.00
% URR>=65 w/ 3tx/wk	95%	100%	100%	98%	98%	98%	100%	98%	100%	96%	100%	100%



	Aug	Sep	Oct	Nov	Dec	Jan	Feb	Mar	Apr	May	Jun	Jul
# Pre Sys BP	67	61	58	59	56	58	56	57	59	58	58	58
# Pre Sys BP <= 165	61	56	52	51	49	54	51	53	51	53	55	54
Pop. Mean	134	139	140	141	142	140	139	138	139	139	137	136
Std. Deviation	20.8	21.0	21.8	19.5	20.0	18.1	19.5	20.2	19.9	18.1	19.7	22.1
% Pre Sys BP <=165	90%	92%	90%	86%	86%	93%	91%	89%	85%	91%	95%	91%



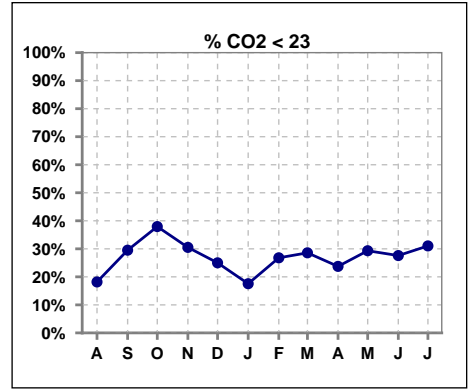
	Aug	Sep	Oct	Nov	Dec	Jan	Feb	Mar	Apr	May	Jun	Jul
# L processed/kg	67	61	58	59	56	58	56	57	59	58	58	58
# L processed/kg>=0.8	57	53	54	54	50	52	51	52	52	52	50	51
Pop. Mean	1	1	1	1	1	1	1	1	1	1	1	1
Std. Deviation	0.3	0.3	0.3	0.3	0.3	0.3	0.4	0.3	0.3	0.3	0.3	0.3
% L processed/kg>=0.8	85%	87%	93%	92%	89%	90%	91%	91%	88%	90%	86%	88%



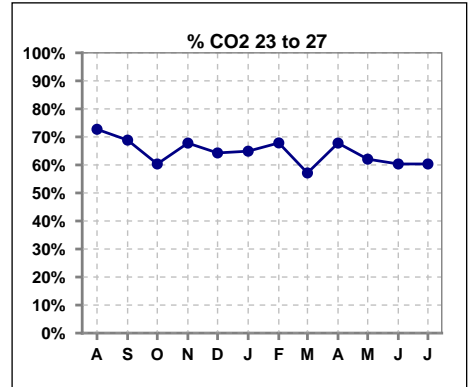
Methodology: a) All labs for 'Adequacy of Dialysis', 'Nutrition', 'Osteodystrophy', 'Anemia' and 'Diabetes' based on last value of month; b) BP's and #L processed are average of all values for month; c) Access data takes last access of month; d) Values for SGA and 'Infection Control' use most recent result.

I. ADEQUACY OF DIALYSIS - CONT.

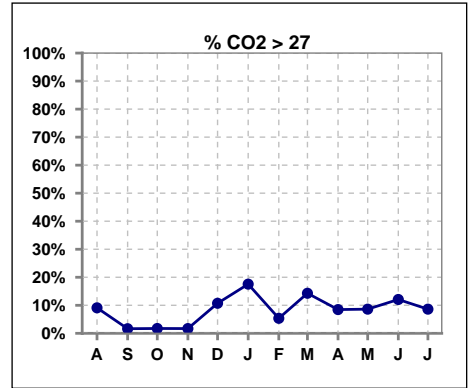
	Aug	Sep	Oct	Nov	Dec	Jan	Feb	Mar	Apr	May	Jun	Jul
# CO2	66	61	58	59	56	57	56	56	59	58	58	58
# CO2 < 23	12	18	22	18	14	10	15	16	14	17	16	18
Pop. Mean	24	24	24	24	24	25	24	24	24	24	24	24
Std. Deviation	2.47	2.36	2.54	2.37	2.83	2.57	2.63	2.73	2.64	2.59	2.56	2.71
% CO2 < 23	18%	30%	38%	31%	25%	18%	27%	29%	24%	29%	28%	31%



	Aug	Sep	Oct	Nov	Dec	Jan	Feb	Mar	Apr	May	Jun	Jul
# CO2	66	61	58	59	56	57	56	56	59	58	58	58
# CO2 23 to 27	48	42	35	40	36	37	38	32	40	36	35	35
Pop. Mean	24	24	24	24	24	25	24	24	24	24	24	24
Std. Deviation	2.47	2.36	2.54	2.37	2.83	2.57	2.63	2.73	2.64	2.59	2.56	2.71
% CO2 23 to 27	73%	69%	60%	68%	64%	65%	68%	57%	68%	62%	60%	60%



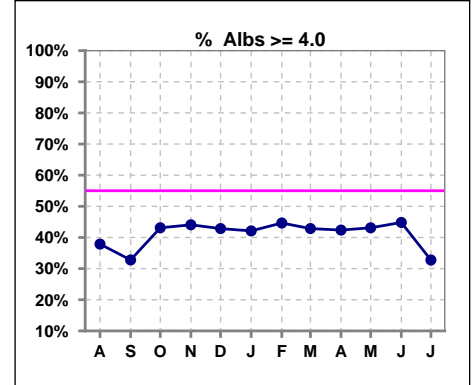
	Aug	Sep	Oct	Nov	Dec	Jan	Feb	Mar	Apr	May	Jun	Jul
# CO2	66	61	58	59	56	57	56	56	59	58	58	58
# CO2 > 27	6	1	1	1	6	10	3	8	5	5	7	5
Pop. Mean	24	24	24	24	24	25	24	24	24	24	24	24
Std. Deviation	2.47	2.36	2.54	2.37	2.83	2.57	2.63	2.73	2.64	2.59	2.56	2.71
% CO2 > 27	9%	2%	2%	2%	11%	18%	5%	14%	8%	9%	12%	9%



*Albumin values use BCG method - as of July 2001

II. NUTRITION

	Aug	Sep	Oct	Nov	Dec	Jan	Feb	Mar	Apr	May	Jun	Jul
# Albumin	66	61	58	59	56	57	56	56	59	58	58	58
# Albumin >= 4.0	25	20	25	26	24	24	25	24	25	25	26	19
Pop. Mean	3.8	3.8	3.8	3.9	3.9	3.8	3.9	3.9	3.8	3.9	3.9	3.8
Std. Deviation	0.37	0.38	0.44	0.41	0.39	0.39	0.40	0.47	0.47	0.40	0.40	0.39
% Alb >= 4.0	38%	33%	43%	44%	43%	42%	45%	43%	42%	43%	45%	33%

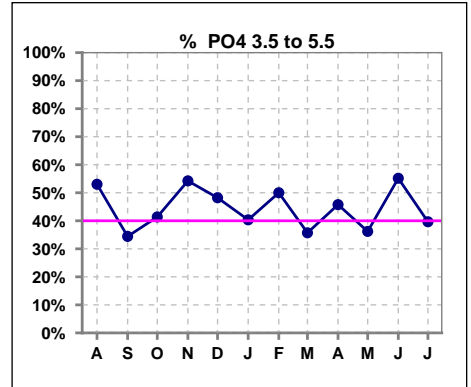


Methodology: a) All labs for 'Adequacy of Dialysis', 'Nutrition', 'Osteodystrophy', 'Anemia' and 'Diabetes' based on last value of month; b) BP's and #L processed are average of all values for month; c) Access data takes last access of month; d) Values for SGA and 'Infection Control' use most recent result.

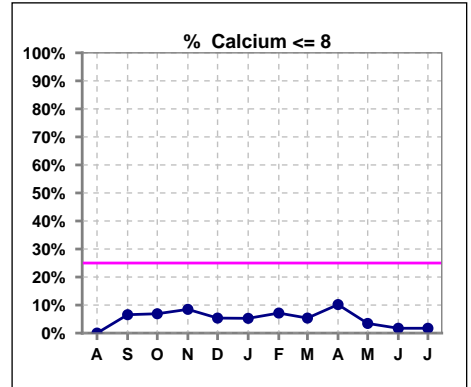
Lab methodology for PTH changed January 2012

III. OSTEODYSTROPHY

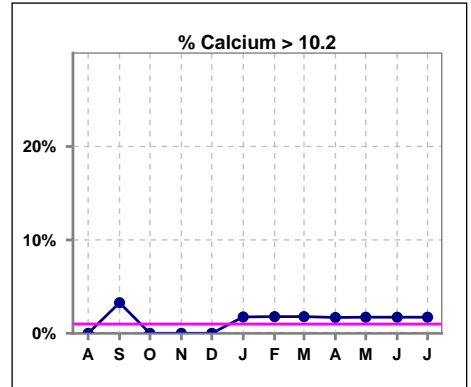
	Aug	Sep	Oct	Nov	Dec	Jan	Feb	Mar	Apr	May	Jun	Jul
# PO4	66	61	58	59	56	57	56	56	59	58	58	58
# PO4 3.5 to 5.5	35	21	24	32	27	23	28	20	27	21	32	23
Pop. Mean	5.5	6.0	5.4	5.3	5.5	5.6	5.4	5.8	5.8	6.0	6.0	5.9
Std. Deviation	1.46	1.77	1.47	1.18	1.41	1.65	1.61	2.23	1.57	1.51	1.47	1.46
% PO4 3.5 to 5.5	53%	34%	41%	54%	48%	40%	50%	36%	46%	36%	55%	40%



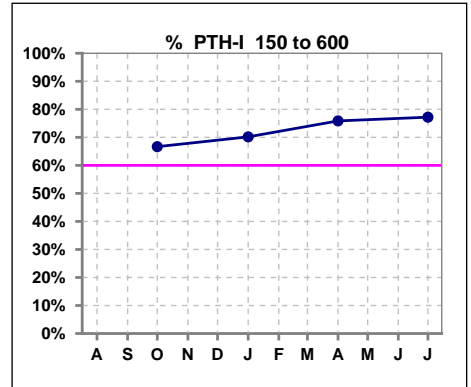
	Aug	Sep	Oct	Nov	Dec	Jan	Feb	Mar	Apr	May	Jun	Jul
# Calcium	66	61	58	59	56	57	56	56	59	58	58	58
# Calcium <= 8	0	4	4	5	3	3	4	3	6	2	1	1
Pop. Mean	9.2	9.1	9.1	9.1	9.2	9.1	9.2	9.2	9.2	9.2	9.3	9.3
Std. Deviation	0.49	0.69	0.67	0.64	0.60	0.63	0.68	0.68	0.78	0.64	0.60	0.64
% Calcium <= 8	0%	7%	7%	8%	5%	5%	7%	5%	10%	3%	2%	2%



	Aug	Sep	Oct	Nov	Dec	Jan	Feb	Mar	Apr	May	Jun	Jul
# Calcium	66	61	58	59	56	57	56	56	59	58	58	58
# Calcium > 10.2	0	2	0	0	0	1	1	1	1	1	1	1
Pop. Mean	9.2	9.1	9.1	9.1	9.2	9.1	9.2	9.2	9.2	9.2	9.3	9.3
Std. Deviation	0.49	0.69	0.67	0.64	0.60	0.63	0.68	0.68	0.78	0.64	0.60	0.64
% Calcium > 10.2	0%	3%	0%	0%	0%	2%	2%	2%	2%	2%	2%	2%



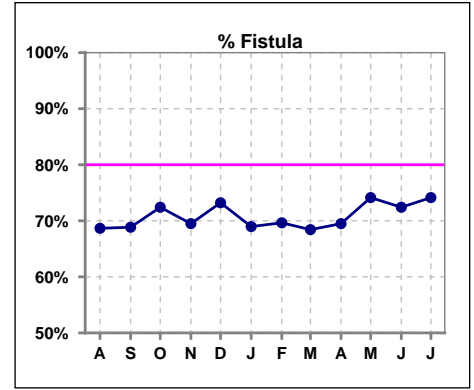
	Aug	Sep	Oct	Nov	Dec	Jan	Feb	Mar	Apr	May	Jun	Jul
# PTH-I			57			57			58			57
# PTH-I 150 to 600			38			40			44			44
Pop. Mean			354			422			416			399
Std. Deviation			227			330			251			310
% PTH-I 150 to 600			67%			70%			76%			77%



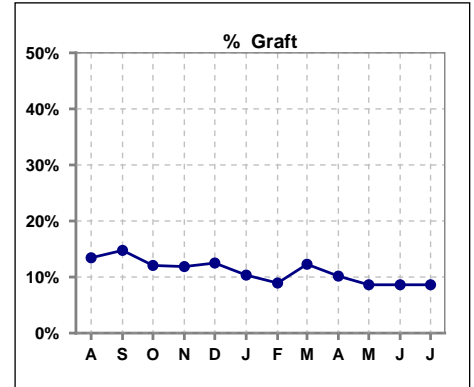
Methodology: a) All labs for 'Adequacy of Dialysis', 'Nutrition', 'Osteodystrophy', 'Anemia' and 'Diabetes' based on last value of month; b) BP's and #L processed are average of all values for month; c) Access data takes last access of month; d) Values for SGA and 'Infection Control' use most recent result.

IV. ACCESS

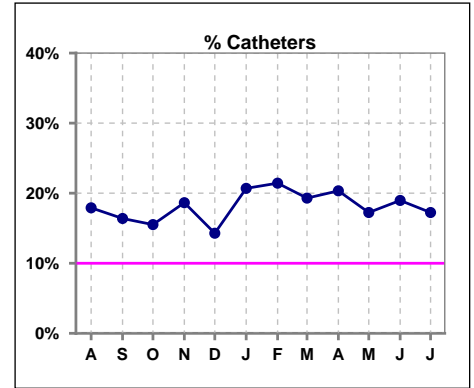
	Aug	Sep	Oct	Nov	Dec	Jan	Feb	Mar	Apr	May	Jun	Jul
# Access	67	61	58	59	56	58	56	57	59	58	58	58
# Fistula	46	42	42	41	41	40	39	39	41	43	42	43
% Fistula	69%	69%	72%	69%	73%	69%	70%	68%	69%	74%	72%	74%



	Aug	Sep	Oct	Nov	Dec	Jan	Feb	Mar	Apr	May	Jun	Jul
# Access	67	61	58	59	56	58	56	57	59	58	58	58
# Graft	9	9	7	7	7	6	5	7	6	5	5	5
% Graft	13%	15%	12%	12%	13%	10%	9%	12%	10%	9%	9%	9%



	Aug	Sep	Oct	Nov	Dec	Jan	Feb	Mar	Apr	May	Jun	Jul
# Access	67	61	58	59	56	58	56	57	59	58	58	58
# Catheters	12	10	9	11	8	12	12	11	12	10	11	10
% Catheters	18%	16%	16%	19%	14%	21%	21%	19%	20%	17%	19%	17%



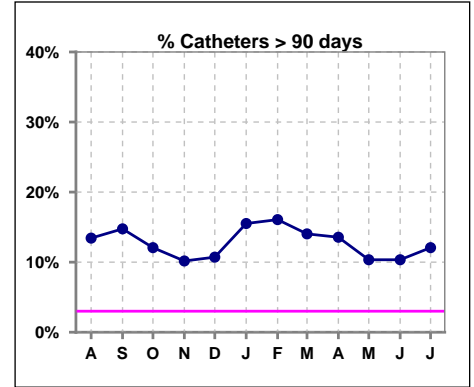
Methodology: a) All labs for 'Adequacy of Dialysis', 'Nutrition', 'Osteodystrophy', 'Anemia' and 'Diabetes' based on last value of month; b) BP's and #L processed are average of all values for month; c) Access data takes last access of month; d) Values for SGA and 'Infection Control' use most recent result.

IV. ACCESS - CONT.

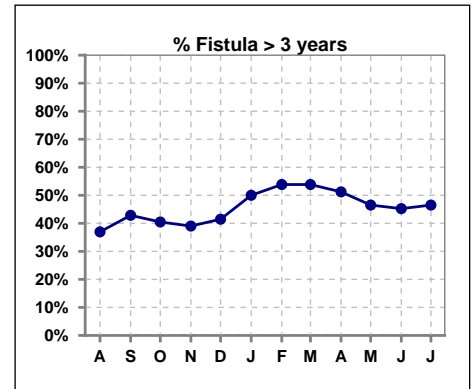
Catheters > 90 days

	Aug	Sep	Oct	Nov	Dec	Jan	Feb	Mar	Apr	May	Jun	Jul
# Access	67	61	58	59	56	58	56	57	59	58	58	58
# Catheters	9	9	7	6	6	9	9	8	8	6	6	7
% Catheters	13%	15%	12%	10%	11%	16%	16%	14%	14%	10%	10%	12%

Definition: Catheter in use on last treatment of the month



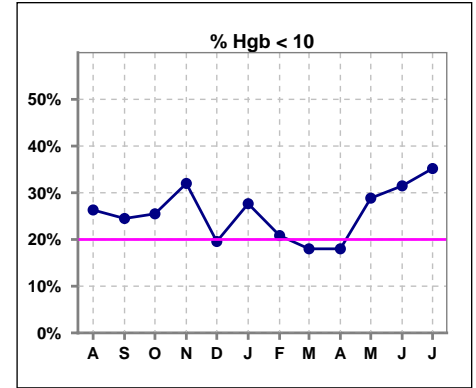
	Aug	Sep	Oct	Nov	Dec	Jan	Feb	Mar	Apr	May	Jun	Jul
# Fistula	46	42	42	41	41	40	39	39	41	43	42	43
# Fistula > 3 yrs	17	18	17	16	17	20	21	21	21	20	19	20
% Fistula > 3 yrs	37%	43%	40%	39%	41%	50%	54%	54%	51%	47%	45%	47%



V. ANEMIA

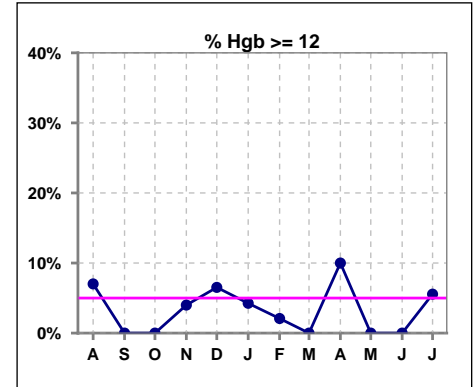
	Aug	Sep	Oct	Nov	Dec	Jan	Feb	Mar	Apr	May	Jun	Jul
# Hgb	57	49	51	50	46	47	48	50	50	52	54	54
# Hgb < 10	15	12	13	16	9	13	10	9	9	15	17	19
Pop. Mean	10.5	10.4	10.3	10.4	10.6	10.5	10.6	10.5	10.6	10.4	10.4	10.4
Std. Deviation	1.1	0.7	0.9	1.2	0.9	1.1	1.0	1.0	1.2	1.1	1.1	1.0
% Hgb < 10	26%	24%	25%	32%	20%	28%	21%	18%	18%	29%	31%	35%

Note: Excludes patients who received no ESA in month.



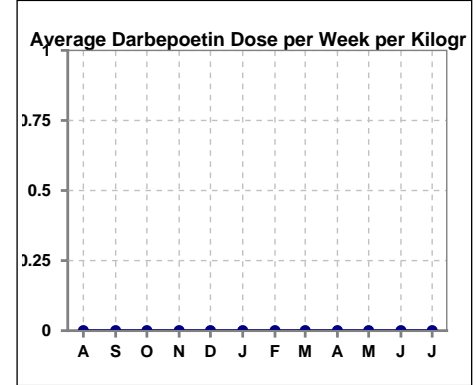
	Aug	Sep	Oct	Nov	Dec	Jan	Feb	Mar	Apr	May	Jun	Jul
# Hgb	57	54	51	50	46	47	48	50	50	52	54	54
# Hgb >= 12	4	0	0	2	3	2	1	0	5	0	0	3
Pop. Mean	10.5	10.3	10.3	10.4	10.6	10.5	10.6	10.5	10.6	10.4	10.4	10.4
Std. Deviation	1.1	0.8	0.9	1.2	0.9	1.1	1.0	1.0	1.2	1.1	1.1	1.0
% Hgb >= 12	7%	0%	0%	4%	7%	4%	2%	0%	10%	0%	0%	6%

Note: Excludes patients who received no ESA in month.



Average Darbepoetin Dose per Week per Kilogram

	Aug	Sep	Oct	Nov	Dec	Jan	Feb	Mar	Apr	May	Jun	Jul
# Average Darbepoetin	0	0	0	0	0	0	0	0	0	0	0	0

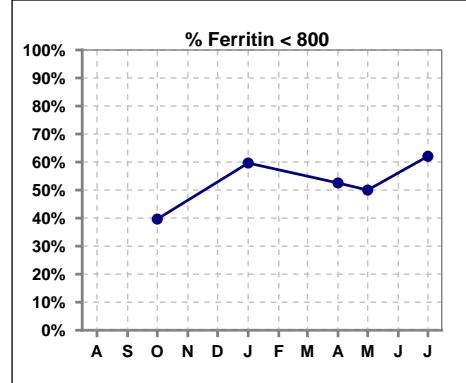


Methodology: a) All labs for 'Adequacy of Dialysis', 'Nutrition', 'Osteodystrophy', 'Anemia' and 'Diabetes' based on last value of month; b) BP's and #L processed are average of all values for month; c) Access data takes last access of month; d) Values for SGA and 'Infection Control' use most recent result.

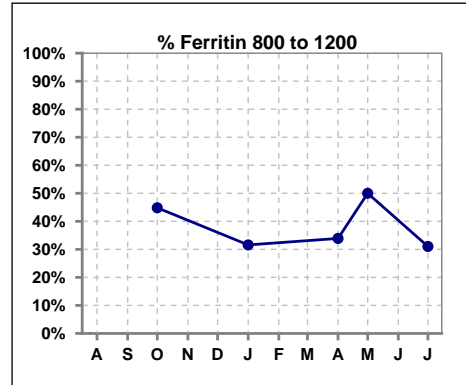
V. ANEMIA - CONT.

Iron Profile

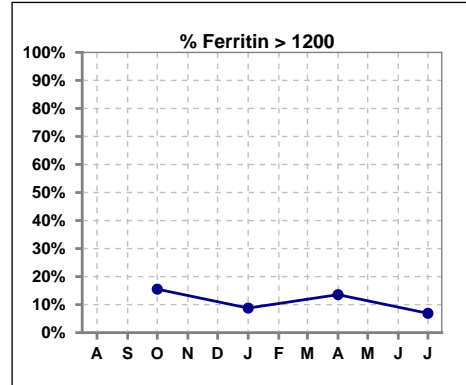
	Aug	Sep	Oct	Nov	Dec	Jan	Feb	Mar	Apr	May	Jun	Jul
# Ferritin			58			57			59	6		58
# Ferritin < 800			23			34			31	3		36
Pop. Mean			857			787			767	656		686
Std. Deviation			392			342			381	428		353
% Ferritin < 800			40%			60%			53%	50%		62%



	Aug	Sep	Oct	Nov	Dec	Jan	Feb	Mar	Apr	May	Jun	Jul
# Ferritin			58			57			59	6		58
# Ferritin 800 to 1200			26			18			20	3		18
Pop. Mean			857			787			767	656		686
Std. Deviation			392			342			381	428		353
% Ferritin 800 to 1200			45%			32%			34%	50%		31%

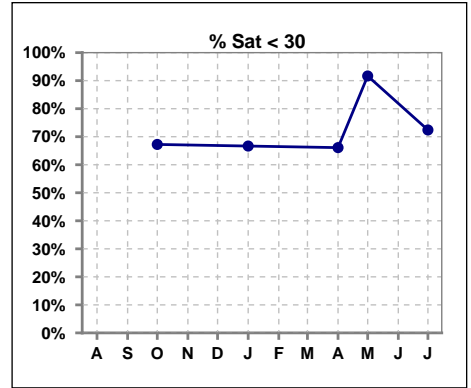


	Aug	Sep	Oct	Nov	Dec	Jan	Feb	Mar	Apr	May	Jun	Jul
# Ferritin			58			57			59	6		58
# Ferritin > 1200			9			5			8			4
Pop. Mean			857			787			767	656		686
Std. Deviation			392			342			381	428		353
% Ferritin > 1200			16%			9%			14%			7%

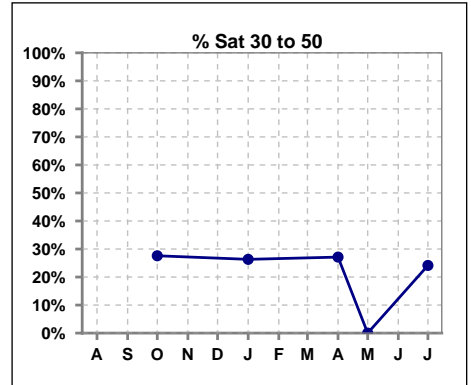


V. ANEMIA - CONT.

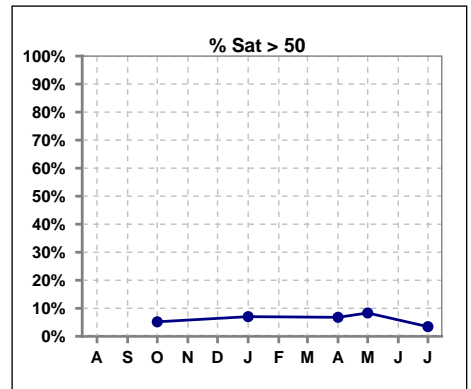
	Aug	Sep	Oct	Nov	Dec	Jan	Feb	Mar	Apr	May	Jun	Jul
# % Sat			58			57			59	12		58
# % Sat < 30			39			38			39	11		42
Pop. Mean			27			27			28	23		26
Std. Deviation			11			12			13	10		10
%% Sat < 30			67%			67%			66%	92%		72%



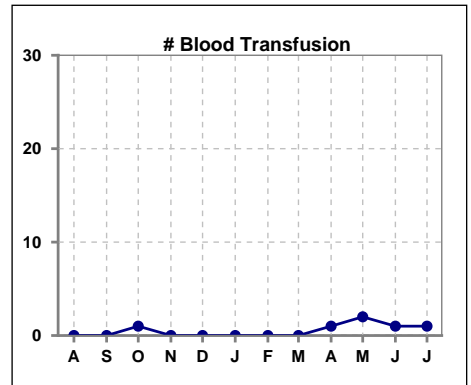
	Aug	Sep	Oct	Nov	Dec	Jan	Feb	Mar	Apr	May	Jun	Jul
# % Sat			58			57			59	12		58
# % Sat 30 to 50			16			15			16	0		14
Pop. Mean			27			27			28	23		26
Std. Deviation			11			12			13	10		10
%% Sat 30 to 50			28%			26%			27%	0%		24%



	Aug	Sep	Oct	Nov	Dec	Jan	Feb	Mar	Apr	May	Jun	Jul
# % Sat			58			57			59	12		58
# % Sat > 50			3			4			4	1		2
Pop. Mean			27			27			28	23		26
Std. Deviation			11			12			13	10		10
%% Sat > 50			5%			7%			7%	8%		3%



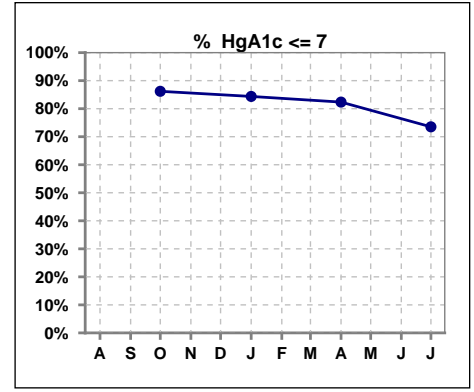
	Aug	Sep	Oct	Nov	Dec	Jan	Feb	Mar	Apr	May	Jun	Jul
# Patient	67	61	63	59	56	58	57	58	59	58	58	58
# Blood Transfusion	0	0	1	0	0	0	0	0	1	2	1	1



Methodology: a) All labs for 'Adequacy of Dialysis', 'Nutrition', 'Osteodystrophy', 'Anemia' and 'Diabetes' based on last value of month; b) BP's and #L processed are average of all values for month; c) Access data takes last access of month; d) Values for SGA and 'Infection Control' use most recent result.

VI. Diabetes

	Aug	Sep	Oct	Nov	Dec	Jan	Feb	Mar	Apr	May	Jun	Jul
# HgA1c			29			32			34			34
# HgA1c <= 7			25			27			28			25
Pop. Mean			6.2			6.2			6.1			6.4
Std. Deviation			0.90			1.02			0.89			1.10
% HgA1c <= 7			86%			84%			82%			74%

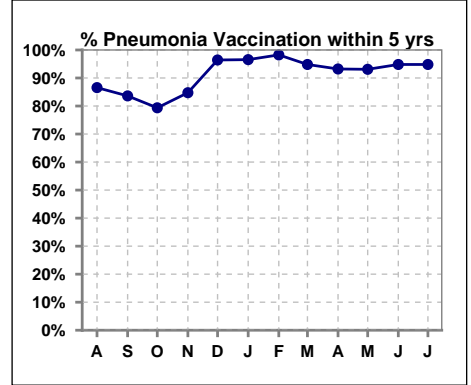


Methodology: a) All labs for 'Adequacy of Dialysis', 'Nutrition', 'Osteodystrophy', 'Anemia' and 'Diabetes' based on last value of month; b) BP's and #L processed are average of all values for month; c) Access data takes last access of month; d) Values for SGA and 'Infection Control' use most recent result.

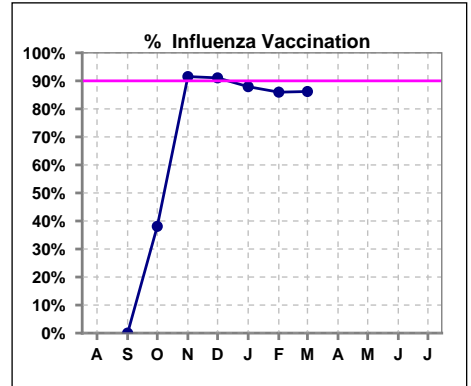
VII. Infection Control

Pneumonia vaccination within the past five years

	Aug	Sep	Oct	Nov	Dec	Jan	Feb	Mar	Apr	May	Jun	Jul
# Patient	67	61	63	59	56	58	57	58	59	58	58	58
# Pneumonia	58	51	50	50	54	56	56	55	55	54	55	55
% Pneumonia	87%	84%	79%	85%	96%	97%	98%	95%	93%	93%	95%	95%



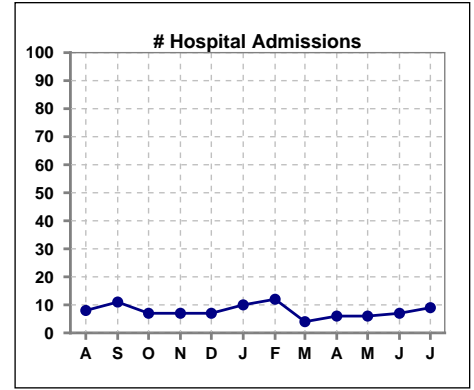
	Aug	Sep	Oct	Nov	Dec	Jan	Feb	Mar	Apr	May	Jun	Jul
# Patient		61	63	59	56	58	57	58				
# Influenza		0	24	54	51	51	49	50				
% Influenza		0%	38%	92%	91%	88%	86%	86%				



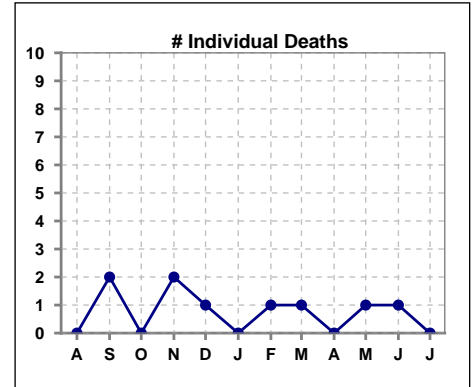
Methodology: a) All labs for 'Adequacy of Dialysis', 'Nutrition', 'Osteodystrophy', 'Anemia' and 'Diabetes' based on last value of month; b) BP's and #L processed are average of all values for month; c) Access data takes last access of month; d) Values for SGA and 'Infection Control' use most recent result.

VIII. Outcome measures

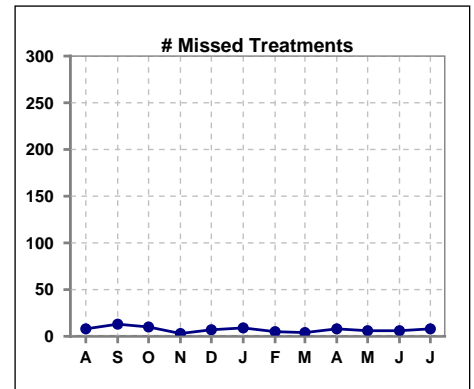
	Aug	Sep	Oct	Nov	Dec	Jan	Feb	Mar	Apr	May	Jun	Jul
# Patient	67	61	63	59	56	58	57	58	59	58	58	58
# Hospital Admissions	8	11	7	7	7	10	12	4	6	6	7	9



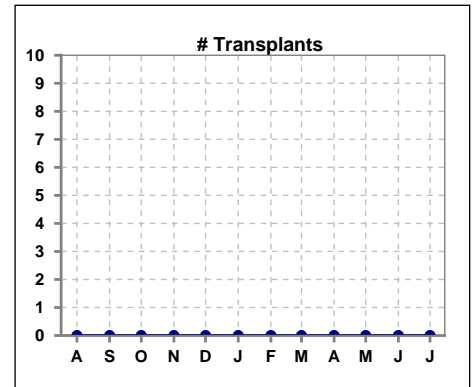
	Aug	Sep	Oct	Nov	Dec	Jan	Feb	Mar	Apr	May	Jun	Jul
# Patient	67	61	63	59	56	58	57	58	59	58	58	58
# Individual Deaths	0	2	0	2	1	0	1	1	0	1	1	0



	Aug	Sep	Oct	Nov	Dec	Jan	Feb	Mar	Apr	May	Jun	Jul
# Patient	67	61	63	59	56	58	57	58	59	58	58	58
# Missed Treatments	8	13	10	3	7	9	5	4	8	6	6	8



	Aug	Sep	Oct	Nov	Dec	Jan	Feb	Mar	Apr	May	Jun	Jul
# Patient	67	61	63	59	56	58	57	58	59	58	58	58
# Transplants	0	0	0	0	0	0	0	0	0	0	0	0



Methodology: a) All labs for 'Adequacy of Dialysis', 'Nutrition', 'Osteodystrophy', 'Anemia' and 'Diabetes' based on last value of month; b) BP's and #L processed are average of all values for month; c) Access data takes last access of month; d) Values for SGA and 'Infection Control' use most recent result.