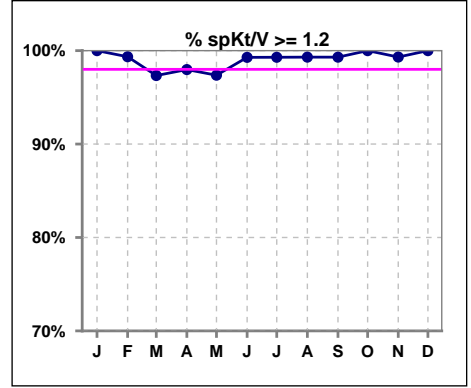
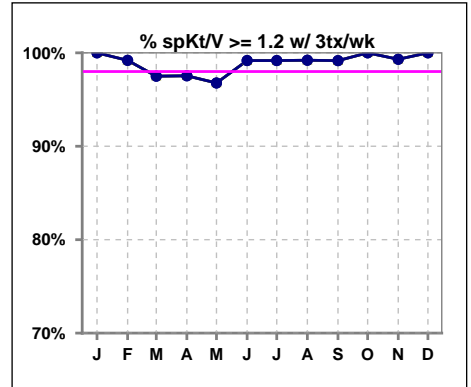


I. ADEQUACY OF DIALYSIS

	Jan	Feb	Mar	Apr	May	Jun	Jul	Aug	Sep	Oct	Nov	Dec
# spKt/V	151	153	150	148	152	139	141	144	143	145	146	147
# spKt/V >= 1.2	151	152	146	145	148	138	140	143	142	145	145	147
Pop. Mean	1.70	1.73	1.68	1.62	1.64	1.61	1.64	1.63	1.64	1.59	1.64	1.65
Std. Deviation	0.34	0.41	0.33	0.32	0.33	0.30	0.29	0.32	0.35	0.29	0.35	0.31
% spKt/V >= 1.2	100%	99%	97%	98%	97%	99%	99%	99%	99%	100%	99%	100%



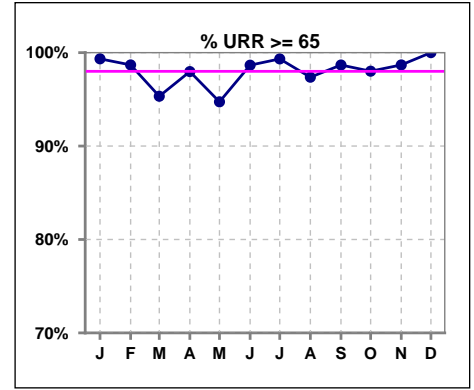
	Jan	Feb	Mar	Apr	May	Jun	Jul	Aug	Sep	Oct	Nov	Dec
# spKt/V w/ 3tx/wk	124	124	120	122	124	121	121	126	120	144	145	145
# spKt/V >= 1.2 w/3tx/wk	124	123	117	119	120	120	120	125	119	144	144	145
Pop. Mean	1.70	1.75	1.69	1.62	1.63	1.62	1.65	1.63	1.64	1.59	1.64	1.64
Std. Deviation	0.35	0.44	0.35	0.33	0.35	0.31	0.30	0.32	0.37	0.29	0.35	0.30
% >= 1.2 w/3tx/wk	100%	99%	98%	98%	97%	99%	99%	99%	99%	100%	99%	100%



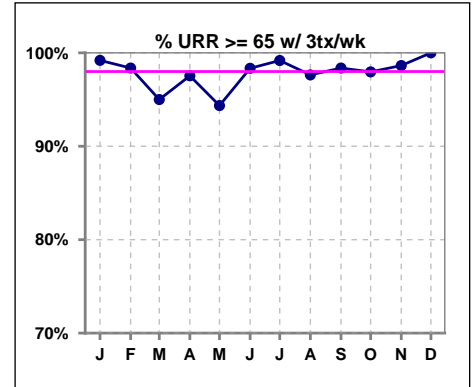
Methodology: a) All labs for 'Adequacy of Dialysis', 'Nutrition', 'Osteodystrophy', 'Anemia' and 'Diabetes' based on last value of month; b) BP's and #L processed are average of all values for month; c) Access data takes last access of month; d) Values for SGA and 'Infection Control' use most recent result.

I. ADEQUACY OF DIALYSIS - CONT.

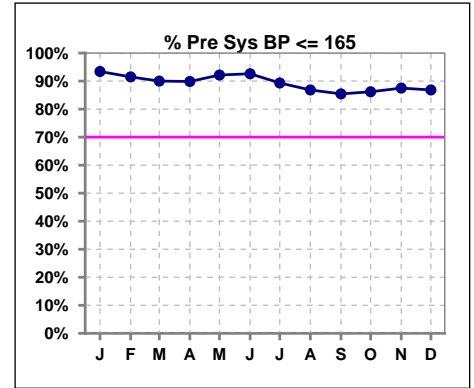
	Jan	Feb	Mar	Apr	May	Jun	Jul	Aug	Sep	Oct	Nov	Dec
# URR	151	152	150	148	152	149	149	152	151	151	152	152
# URR >= 65	150	150	143	145	144	147	148	148	149	148	150	152
Pop. Mean	76	76	76	74	75	75	75	75	75	75	75	76
Std. Deviation	6.02	6.27	6.41	6.73	6.52	5.69	5.49	6.19	6.02	5.89	6.32	5.61
% URR >= 65	99%	99%	95%	98%	95%	99%	99%	97%	99%	98%	99%	100%



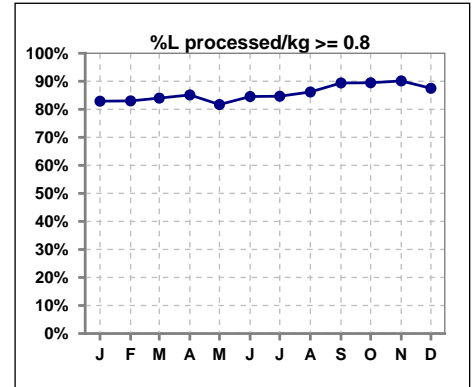
	Jan	Feb	Mar	Apr	May	Jun	Jul	Aug	Sep	Oct	Nov	Dec
# URR w/ 3tx/wk	124	123	120	122	124	121	122	127	123	147	147	147
# URR>=65 w/ 3tx/wk	123	121	114	119	117	119	121	124	121	144	145	147
Pop. Mean	76	77	76	74	75	75	76	75	75	74	75	75
Std. Deviation	6.14	6.48	6.65	6.97	6.82	5.96	5.55	6.13	6.18	5.82	6.32	5.59
% URR>=65 w/ 3tx/wk	99%	98%	95%	98%	94%	98%	99%	98%	98%	98%	99%	100%



	Jan	Feb	Mar	Apr	May	Jun	Jul	Aug	Sep	Oct	Nov	Dec
# Pre Sys BP	152	153	150	148	153	149	150	152	151	152	152	152
# Pre Sys BP <= 165	142	142	136	134	141	139	137	133	129	132	134	132
Pop. Mean	141	143	144	144	142	141	141	144	144	145	146	147
Std. Deviation	18.6	19.8	19.1	17.0	19.3	19.0	18.9	19.6	20.4	20.1	20.3	19.7
% Pre Sys BP <=165	93%	92%	90%	90%	92%	93%	89%	87%	85%	86%	88%	87%



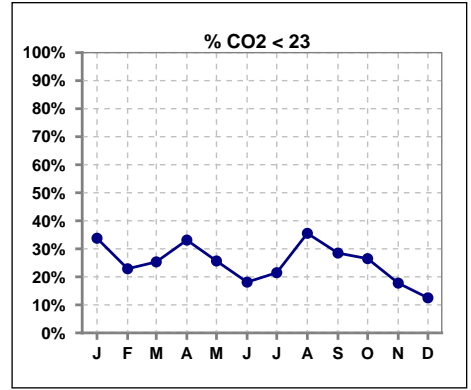
	Jan	Feb	Mar	Apr	May	Jun	Jul	Aug	Sep	Oct	Nov	Dec
# L processed/kg	152	153	150	148	153	149	150	152	151	152	152	152
# L processed/kg>=0.8	126	127	126	126	125	126	127	131	135	136	137	133
Pop. Mean	1	1	1	1	1	1	1	1	1	1	1	1
Std. Deviation	0.3	0.3	0.3	0.3	0.3	0.3	0.3	0.3	0.3	0.3	0.3	0.3
% L processed/kg>=0.8	83%	83%	84%	85%	82%	85%	85%	86%	89%	89%	90%	88%



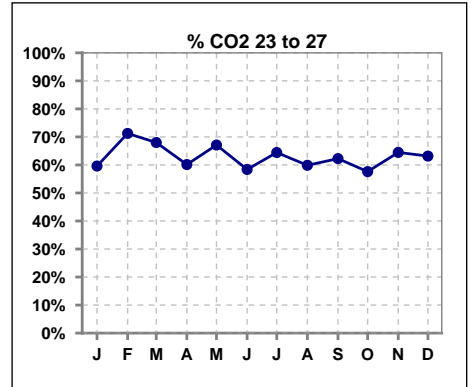
Methodology: a) All labs for 'Adequacy of Dialysis', 'Nutrition', 'Osteodystrophy', 'Anemia' and 'Diabetes' based on last value of month; b) BP's and #L processed are average of all values for month; c) Access data takes last access of month; d) Values for SGA and 'Infection Control' use most recent result.

I. ADEQUACY OF DIALYSIS - CONT.

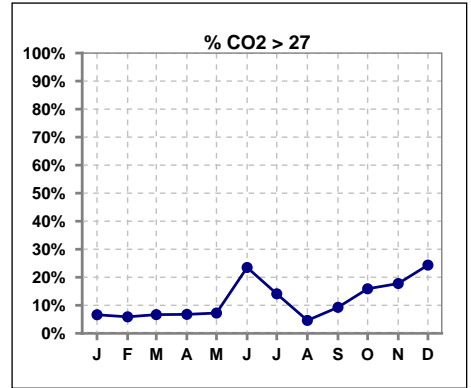
	Jan	Feb	Mar	Apr	May	Jun	Jul	Aug	Sep	Oct	Nov	Dec
# CO2	151	153	150	148	152	149	149	152	151	151	152	152
# CO2 < 23	51	35	38	49	39	27	32	54	43	40	27	19
Pop. Mean	23	24	24	23	24	25	25	23	24	24	25	25
Std. Deviation	3.25	2.68	2.54	2.92	2.74	3.13	2.98	2.94	2.93	3.16	3.19	2.80
% CO2 < 23	34%	23%	25%	33%	26%	18%	21%	36%	28%	26%	18%	13%



	Jan	Feb	Mar	Apr	May	Jun	Jul	Aug	Sep	Oct	Nov	Dec
# CO2	151	153	150	148	152	149	149	152	151	151	152	152
# CO2 23 to 27	90	109	102	89	102	87	96	91	94	87	98	96
Pop. Mean	23	24	24	23	24	25	25	23	24	24	25	25
Std. Deviation	3.25	2.68	2.54	2.92	2.74	3.13	2.98	2.94	2.93	3.16	3.19	2.80
% CO2 23 to 27	60%	71%	68%	60%	67%	58%	64%	60%	62%	58%	64%	63%



	Jan	Feb	Mar	Apr	May	Jun	Jul	Aug	Sep	Oct	Nov	Dec
# CO2	151	153	150	148	152	149	149	152	151	151	152	152
# CO2 > 27	10	9	10	10	11	35	21	7	14	24	27	37
Pop. Mean	23	24	24	23	24	25	25	23	24	24	25	25
Std. Deviation	3.25	2.68	2.54	2.92	2.74	3.13	2.98	2.94	2.93	3.16	3.19	2.80
% CO2 > 27	7%	6%	7%	7%	7%	23%	14%	5%	9%	16%	18%	24%

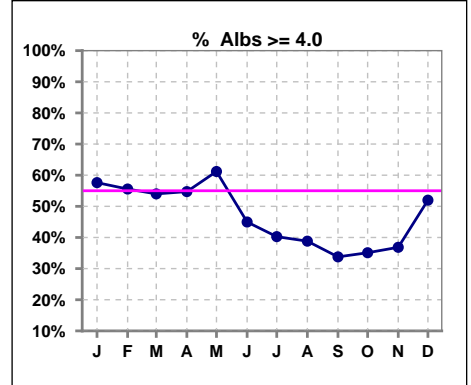


Methodology: a) All labs for 'Adequacy of Dialysis', 'Nutrition', 'Osteodystrophy', 'Anemia' and 'Diabetes' based on last value of month; b) BP's and #L processed are average of all values for month; c) Access data takes last access of month; d) Values for SGA and 'Infection Control' use most recent result.

*Albumin values use BCG method - as of July 2001

II. NUTRITION

	Jan	Feb	Mar	Apr	May	Jun	Jul	Aug	Sep	Oct	Nov	Dec
# Albumin	151	153	150	148	152	149	149	152	151	151	152	152
# Albumin >= 4.0	87	85	81	81	93	67	60	59	51	53	56	79
Pop. Mean	3.9	3.9	3.9	4.0	3.9	3.8	3.8	3.8	3.8	3.8	3.8	3.9
Std. Deviation	0.41	0.39	0.37	0.38	0.38	0.42	0.41	0.43	0.41	0.41	0.38	0.39
% Alb >= 4.0	58%	56%	54%	55%	61%	45%	40%	39%	34%	35%	37%	52%

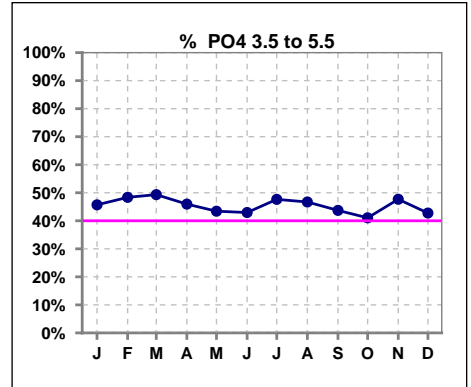


Methodology: a) All labs for 'Adequacy of Dialysis', 'Nutrition', 'Osteodystrophy', 'Anemia' and 'Diabetes' based on last value of month; b) BP's and #L processed are average of all values for month; c) Access data takes last access of month; d) Values for SGA and 'Infection Control' use most recent result.

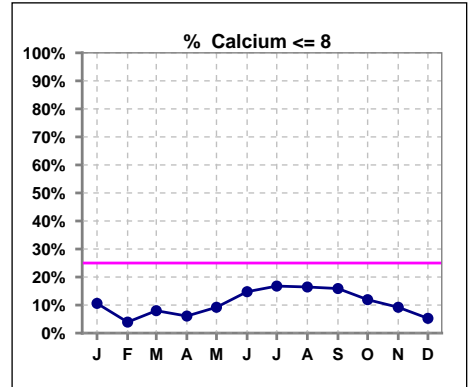
Lab methodology for PTH changed January 2012

III. OSTEODYSTROPHY

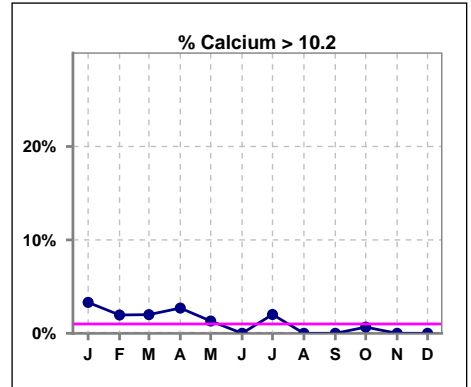
	Jan	Feb	Mar	Apr	May	Jun	Jul	Aug	Sep	Oct	Nov	Dec
# PO4	151	153	150	148	152	149	149	152	151	151	151	152
# PO4 3.5 to 5.5	69	74	74	68	66	64	71	71	66	62	72	65
Pop. Mean	5.7	5.4	5.7	5.7	5.7	5.9	5.8	5.5	5.7	5.6	5.7	5.9
Std. Deviation	1.79	1.79	1.91	1.89	1.90	1.99	1.87	1.68	1.71	1.76	1.69	1.80
% PO4 3.5 to 5.5	46%	48%	49%	46%	43%	43%	48%	47%	44%	41%	48%	43%



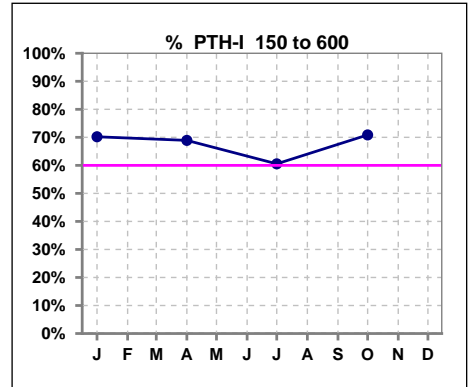
	Jan	Feb	Mar	Apr	May	Jun	Jul	Aug	Sep	Oct	Nov	Dec
# Calcium	151	153	150	148	152	149	149	152	151	151	152	152
# Calcium <= 8	16	6	12	9	14	22	25	25	24	18	14	8
Pop. Mean	9.0	9.1	9.0	9.0	9.0	8.8	8.8	8.7	8.7	8.8	8.9	9.0
Std. Deviation	0.82	0.73	0.73	0.67	0.71	0.67	0.76	0.71	0.70	0.63	0.66	0.63
% Calcium <= 8	11%	4%	8%	6%	9%	15%	17%	16%	16%	12%	9%	5%



	Jan	Feb	Mar	Apr	May	Jun	Jul	Aug	Sep	Oct	Nov	Dec
# Calcium	151	153	150	148	152	149	149	152	151	151	152	152
# Calcium > 10.2	5	3	3	4	2	0	3	0	0	1	0	0
Pop. Mean	9.0	9.1	9.0	9.0	9.0	8.8	8.8	8.7	8.7	8.8	8.9	9.0
Std. Deviation	0.82	0.73	0.73	0.67	0.71	0.67	0.76	0.71	0.70	0.63	0.66	0.63
% Calcium > 10.2	3%	2%	2%	3%	1%	0%	2%	0%	0%	1%	0%	0%



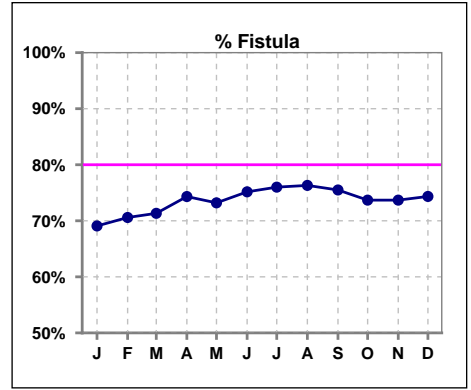
	Jan	Feb	Mar	Apr	May	Jun	Jul	Aug	Sep	Oct	Nov	Dec
# PTH-I	151			148			147			151		
# PTH-I 150 to 600	106			102			89			107		
Pop. Mean	471			438			532			458		
Std. Deviation	346			357			425			385		
% PTH-I 150 to 600	70%			69%			61%			71%		



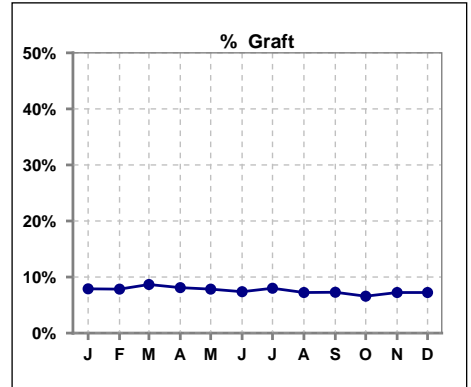
Methodology: a) All labs for 'Adequacy of Dialysis', 'Nutrition', 'Osteodystrophy', 'Anemia' and 'Diabetes' based on last value of month; b) BP's and #L processed are average of all values for month; c) Access data takes last access of month; d) Values for SGA and 'Infection Control' use most recent result.

IV. ACCESS

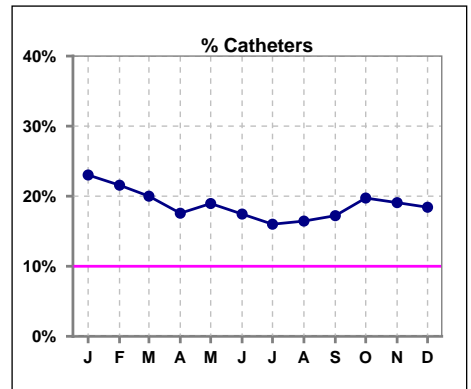
	Jan	Feb	Mar	Apr	May	Jun	Jul	Aug	Sep	Oct	Nov	Dec
# Access	152	153	150	148	153	149	150	152	151	152	152	152
# Fistula	105	108	107	110	112	112	114	116	114	112	112	113
% Fistula	69%	71%	71%	74%	73%	75%	76%	76%	75%	74%	74%	74%



	Jan	Feb	Mar	Apr	May	Jun	Jul	Aug	Sep	Oct	Nov	Dec
# Access	152	153	150	148	153	149	150	152	151	152	152	152
# Graft	12	12	13	12	12	11	12	11	11	10	11	11
% Graft	8%	8%	9%	8%	8%	7%	8%	7%	7%	7%	7%	7%



	Jan	Feb	Mar	Apr	May	Jun	Jul	Aug	Sep	Oct	Nov	Dec
# Access	152	153	150	148	153	149	150	152	151	152	152	152
# Catheters	35	33	30	26	29	26	24	25	26	30	29	28
% Catheters	23%	22%	20%	18%	19%	17%	16%	16%	17%	20%	19%	18%



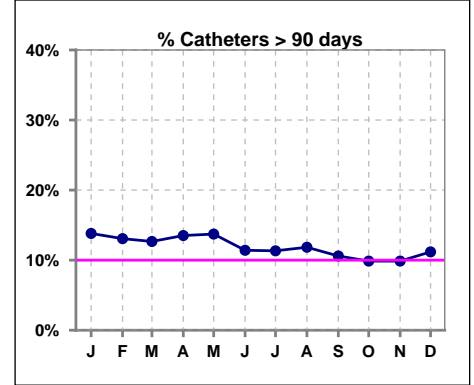
Methodology: a) All labs for 'Adequacy of Dialysis', 'Nutrition', 'Osteodystrophy', 'Anemia' and 'Diabetes' based on last value of month; b) BP's and #L processed are average of all values for month; c) Access data takes last access of month; d) Values for SGA and 'Infection Control' use most recent result.

IV. ACCESS - CONT.

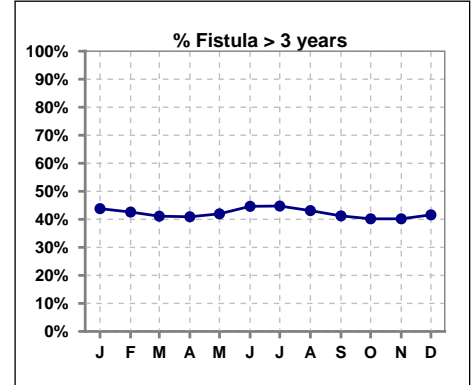
Catheters > 90 days

	Jan	Feb	Mar	Apr	May	Jun	Jul	Aug	Sep	Oct	Nov	Dec
# Access	152	153	150	148	153	149	150	152	151	152	152	152
# Catheters	21	20	19	20	21	17	17	18	16	15	15	17
% Catheters	14%	13%	13%	14%	14%	11%	11%	12%	11%	10%	10%	11%

Definition: Catheter in use on last treatment of the month



	Jan	Feb	Mar	Apr	May	Jun	Jul	Aug	Sep	Oct	Nov	Dec
# Fistula	105	108	107	110	112	112	114	116	114	112	112	113
# Fistula > 3 yrs	46	46	44	45	47	50	51	50	47	45	45	47
% Fistula > 3 yrs	44%	43%	41%	41%	42%	45%	45%	43%	41%	40%	40%	42%

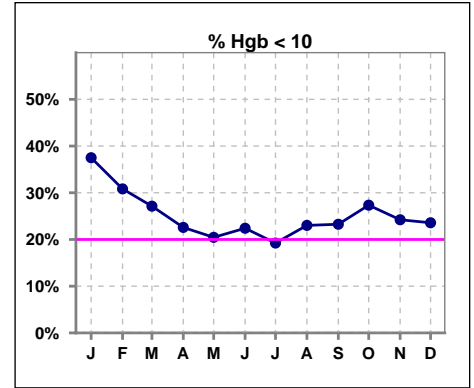


Methodology: a) All labs for 'Adequacy of Dialysis', 'Nutrition', 'Osteodystrophy', 'Anemia' and 'Diabetes' based on last value of month; b) BP's and #L processed are average of all values for month; c) Access data takes last access of month; d) Values for SGA and 'Infection Control' use most recent result.

V. ANEMIA

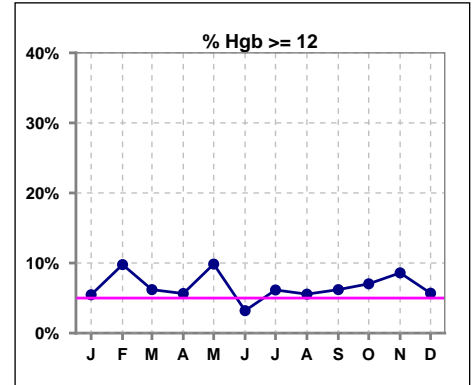
	Jan	Feb	Mar	Apr	May	Jun	Jul	Aug	Sep	Oct	Nov	Dec
# Hgb	128	133	129	124	132	125	130	126	129	128	128	123
# Hgb < 10	48	41	35	28	27	28	25	29	30	35	31	29
Pop. Mean	10.4	10.5	10.6	10.7	10.8	10.6	10.9	10.6	10.6	10.5	10.6	10.6
Std. Deviation	1.2	1.4	1.2	1.1	1.3	1.4	1.2	1.4	1.3	1.3	1.2	1.1
% Hgb < 10	38%	31%	27%	23%	20%	22%	19%	23%	23%	27%	24%	24%

Note: Excludes patients who received no ESA in month.



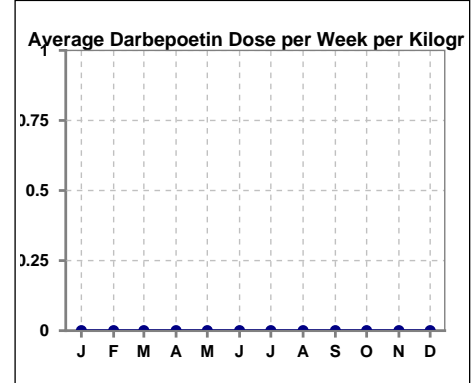
	Jan	Feb	Mar	Apr	May	Jun	Jul	Aug	Sep	Oct	Nov	Dec
# Hgb	128	133	129	124	132	125	130	126	129	128	128	123
# Hgb >= 12	7	13	8	7	13	4	8	7	8	9	11	7
Pop. Mean	10.4	10.5	10.6	10.7	10.8	10.6	10.9	10.6	10.6	10.5	10.6	10.6
Std. Deviation	1.2	1.4	1.2	1.1	1.3	1.4	1.2	1.4	1.3	1.3	1.2	1.1
% Hgb >= 12	5%	10%	6%	6%	10%	3%	6%	6%	6%	7%	9%	6%

Note: Excludes patients who received no ESA in month.



Average Darbepoetin Dose per Week per Kilogram

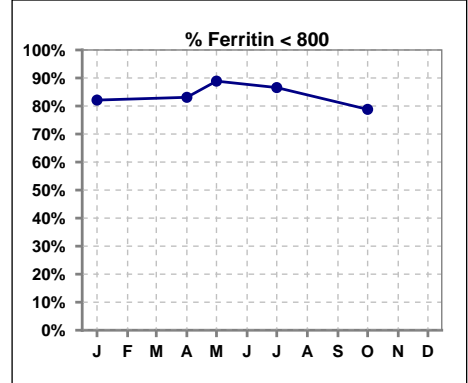
	Jan	Feb	Mar	Apr	May	Jun	Jul	Aug	Sep	Oct	Nov	Dec
# Average Darbepoetin	0	0	0	0	0	0	0	0	0	0	0	0



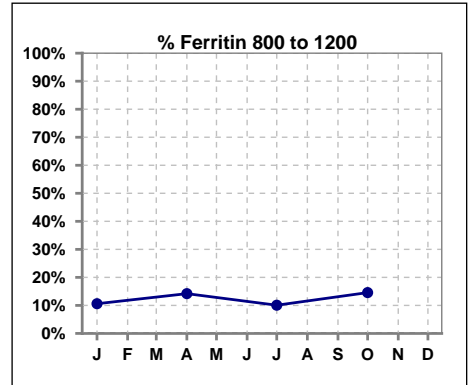
V. ANEMIA - CONT.

Iron Profile

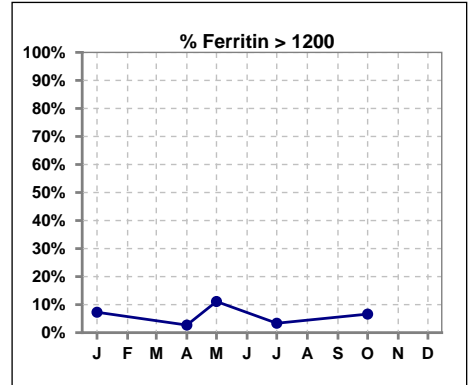
	Jan	Feb	Mar	Apr	May	Jun	Jul	Aug	Sep	Oct	Nov	Dec
# Ferritin	151			148	9		149			151		
# Ferritin < 800	124			123	8		129			119		
Pop. Mean	508			491	493		464			527		
Std. Deviation	367			330	829		319			364		
% Ferritin < 800	82%			83%	89%		87%			79%		



	Jan	Feb	Mar	Apr	May	Jun	Jul	Aug	Sep	Oct	Nov	Dec
# Ferritin	151			148	9		149			151		
# Ferritin 800 to 1200	16			21			15			22		
Pop. Mean	508			491	493		464			527		
Std. Deviation	367			330	829		319			364		
% Ferritin 800 to 1200	11%			14%			10%			15%		



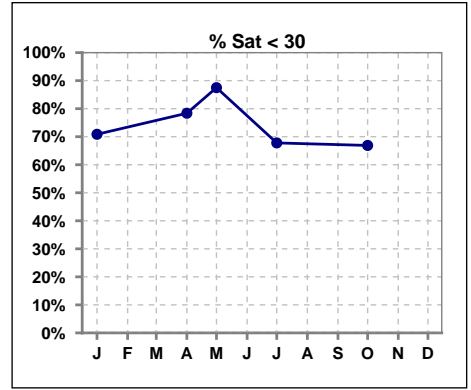
	Jan	Feb	Mar	Apr	May	Jun	Jul	Aug	Sep	Oct	Nov	Dec
# Ferritin	151			148	9		149			151		
# Ferritin > 1200	11			4	1		5			10		
Pop. Mean	508			491	493		464			527		
Std. Deviation	367			330	829		319			364		
% Ferritin > 1200	7%			3%	11%		3%			7%		



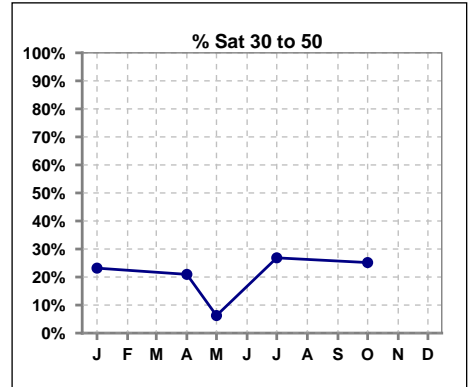
Methodology: a) All labs for 'Adequacy of Dialysis', 'Nutrition', 'Osteodystrophy', 'Anemia' and 'Diabetes' based on last value of month; b) BP's and #L processed are average of all values for month; c) Access data takes last access of month; d) Values for SGA and 'Infection Control' use most recent result.

V. ANEMIA - CONT.

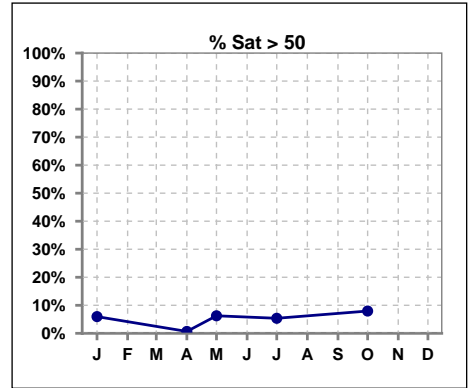
	Jan	Feb	Mar	Apr	May	Jun	Jul	Aug	Sep	Oct	Nov	Dec
# % Sat	151			148	16		149			151		
# % Sat < 30	107			116	14		101			101		
Pop. Mean	26			24	24		28			28		
Std. Deviation	15			9	13		14			15		
% % Sat < 30	71%			78%	88%		68%			67%		



	Jan	Feb	Mar	Apr	May	Jun	Jul	Aug	Sep	Oct	Nov	Dec
# % Sat	151			148	16		149			151		
# % Sat 30 to 50	35			31	1		40			38		
Pop. Mean	26			24	24		28			28		
Std. Deviation	15			9	13		14			15		
% % Sat 30 to 50	23%			21%	6%		27%			25%		



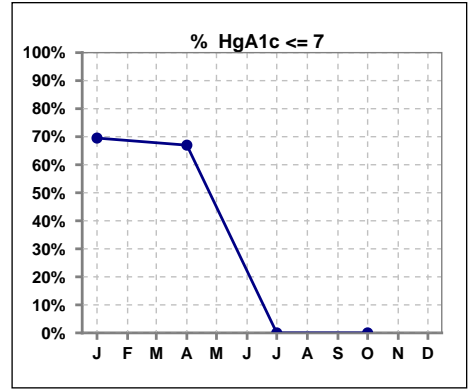
	Jan	Feb	Mar	Apr	May	Jun	Jul	Aug	Sep	Oct	Nov	Dec
# % Sat	151			148	16		149			151		
# % Sat > 50	9			1	1		8			12		
Pop. Mean	26			24	24		28			28		
Std. Deviation	15			9	13		14			15		
% % Sat > 50	6%			1%	6%		5%			8%		



Methodology: a) All labs for 'Adequacy of Dialysis', 'Nutrition', 'Osteodystrophy', 'Anemia' and 'Diabetes' based on last value of month; b) BP's and #L processed are average of all values for month; c) Access data takes last access of month; d) Values for SGA and 'Infection Control' use most recent result.

VI. Diabetes

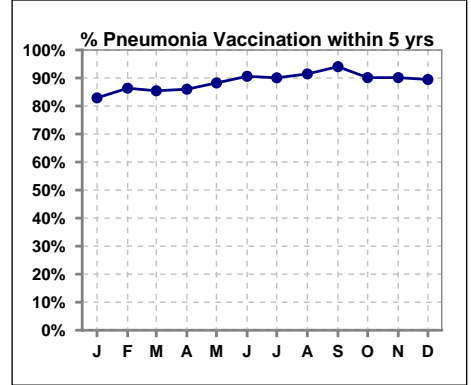
	Jan	Feb	Mar	Apr	May	Jun	Jul	Aug	Sep	Oct	Nov	Dec
# HgA1c	105			103			0			0		
# HgA1c <= 7	73			69			0			0		
Pop. Mean	6.6			6.6			0			0		
Std. Deviation	1.45			1.55			0			0		
% HgA1c <= 7	70%			67%			0%			0%		



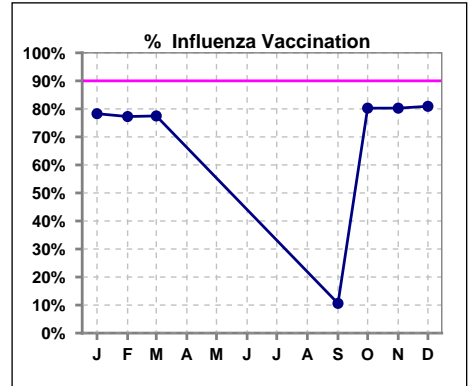
VII. Infection Control

Pneumonia vaccination within the past five years

	Jan	Feb	Mar	Apr	May	Jun	Jul	Aug	Sep	Oct	Nov	Dec
# Patient	152	154	151	150	153	149	151	152	151	152	152	152
# Pneumonia	126	133	129	129	135	135	136	139	142	137	137	136
% Pneumonia	83%	86%	85%	86%	88%	91%	90%	91%	94%	90%	90%	89%



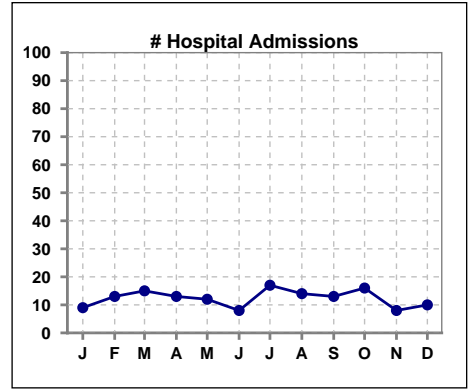
	Jan	Feb	Mar	Apr	May	Jun	Jul	Aug	Sep	Oct	Nov	Dec
# Patient	152	154	151						151	152	152	152
# Influenza	119	119	117						16	122	122	123
% Influenza	78%	77%	77%						11%	80%	80%	81%



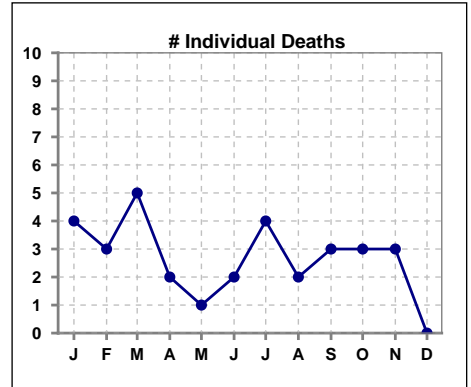
Methodology: a) All labs for 'Adequacy of Dialysis', 'Nutrition', 'Osteodystrophy', 'Anemia' and 'Diabetes' based on last value of month; b) BP's and #L processed are average of all values for month; c) Access data takes last access of month; d) Values for SGA and 'Infection Control' use most recent result.

VIII. Outcome measures

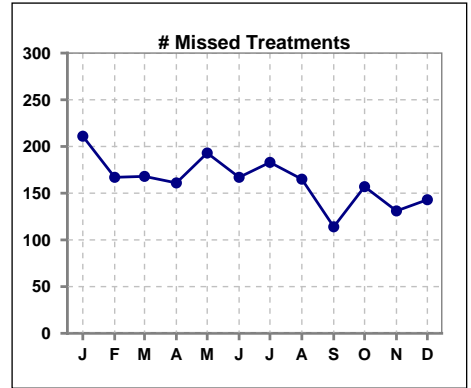
	Jan	Feb	Mar	Apr	May	Jun	Jul	Aug	Sep	Oct	Nov	Dec
# Patient	152	154	151	150	153	149	151	152	151	152	152	152
# Hospital Admissions	9	13	15	13	12	8	17	14	13	16	8	10



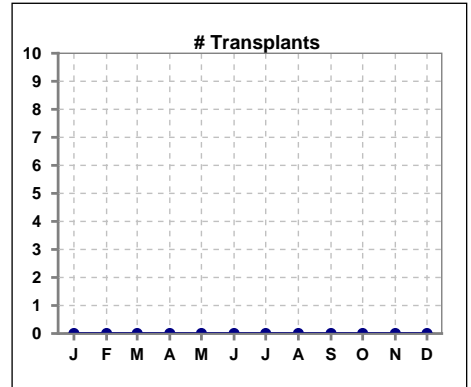
	Jan	Feb	Mar	Apr	May	Jun	Jul	Aug	Sep	Oct	Nov	Dec
# Patient	152	154	151	150	153	149	151	152	151	152	152	152
# Individual Deaths	4	3	5	2	1	2	4	2	3	3	3	0



	Jan	Feb	Mar	Apr	May	Jun	Jul	Aug	Sep	Oct	Nov	Dec
# Patient	152	154	151	150	153	149	151	152	151	152	152	152
# Missed Treatments	211	167	168	161	193	167	183	165	114	157	131	143



	Jan	Feb	Mar	Apr	May	Jun	Jul	Aug	Sep	Oct	Nov	Dec
# Patient	152	154	151	150	153	149	151	152	151	152	152	152
# Transplants	0	0	0	0	0	0	0	0	0	0	0	0



Methodology: a) All labs for 'Adequacy of Dialysis', 'Nutrition', 'Osteodystrophy', 'Anemia' and 'Diabetes' based on last value of month; b) BP's and #L processed are average of all values for month; c) Access data takes last access of month; d) Values for SGA and 'Infection Control' use most recent result.