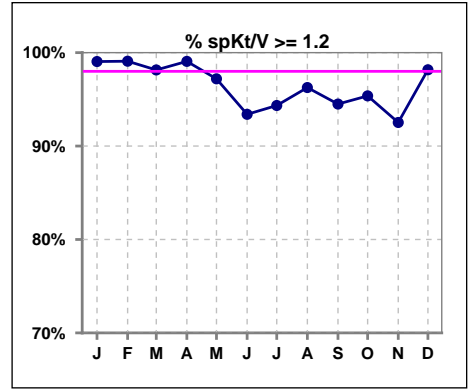
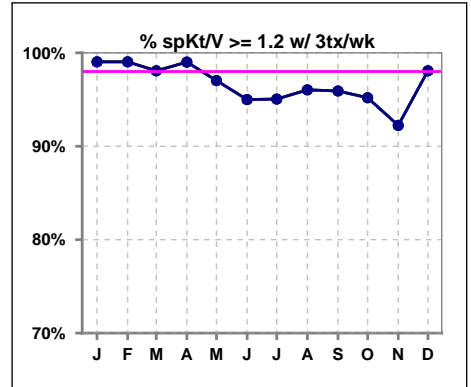


I. ADEQUACY OF DIALYSIS

	Jan	Feb	Mar	Apr	May	Jun	Jul	Aug	Sep	Oct	Nov	Dec
# spKt/V	105	109	108	107	107	106	106	107	109	108	107	109
# spKt/V >= 1.2	104	108	106	106	104	99	100	103	103	103	99	107
Pop. Mean	1.70	1.68	1.74	1.64	1.58	1.58	1.61	1.58	1.60	1.63	1.64	1.64
Std. Deviation	0.33	0.31	0.46	0.29	0.33	0.32	0.35	0.32	0.35	0.33	0.34	0.31
% spKt/V >= 1.2	99%	99%	98%	99%	97%	93%	94%	96%	94%	95%	93%	98%

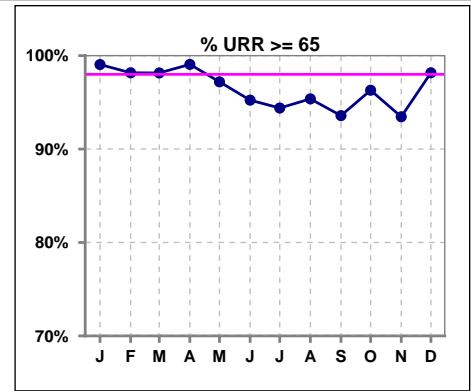


	Jan	Feb	Mar	Apr	May	Jun	Jul	Aug	Sep	Oct	Nov	Dec
# spKt/V w/ 3tx/wk	104	104	104	101	101	100	101	101	98	104	103	104
# spKt/V >= 1.2 w/3tx/wk	103	103	102	100	98	95	96	97	94	99	95	102
Pop. Mean	1.70	1.69	1.74	1.64	1.58	1.60	1.61	1.58	1.62	1.63	1.63	1.64
Std. Deviation	0.33	0.30	0.46	0.29	0.33	0.30	0.33	0.31	0.34	0.32	0.33	0.31
% >= 1.2 w/3tx/wk	99%	99%	98%	99%	97%	95%	95%	96%	96%	95%	92%	98%

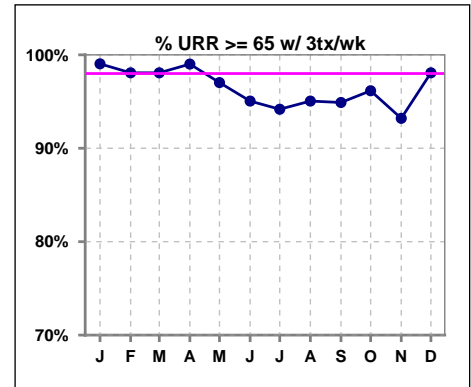


I. ADEQUACY OF DIALYSIS - CONT.

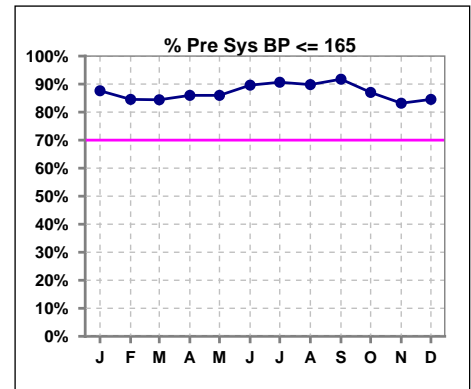
	Jan	Feb	Mar	Apr	May	Jun	Jul	Aug	Sep	Oct	Nov	Dec
# URR	105	109	108	107	107	105	107	108	109	108	107	109
# URR >= 65	104	107	106	106	104	100	101	103	102	104	100	107
Pop. Mean	76	76	77	75	74	74	75	74	74	75	75	75
Std. Deviation	5.57	5.50	6.61	5.59	9.25	6.49	7.11	6.58	7.40	6.55	6.37	5.71
% URR >= 65	99%	98%	98%	99%	97%	95%	94%	95%	94%	96%	93%	98%



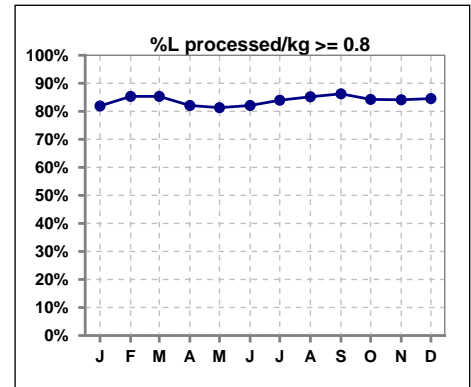
	Jan	Feb	Mar	Apr	May	Jun	Jul	Aug	Sep	Oct	Nov	Dec
# URR w/ 3tx/wk	104	104	104	101	101	101	103	101	98	104	103	104
# URR>=65 w/ 3tx/wk	103	102	102	100	98	96	97	96	93	100	96	102
Pop. Mean	76	76	77	75	73	74	75	74	75	75	75	75
Std. Deviation	5.59	5.36	6.61	5.59	9.40	6.56	7.04	6.53	7.14	6.51	6.34	5.76
% URR>=65 w/ 3tx/wk	99%	98%	98%	99%	97%	95%	94%	95%	95%	96%	93%	98%



	Jan	Feb	Mar	Apr	May	Jun	Jul	Aug	Sep	Oct	Nov	Dec
# Pre Sys BP	105	110	109	107	107	106	107	108	109	108	107	110
# Pre Sys BP <= 165	94	93	94	93	93	96	98	97	100	95	92	93
Pop. Mean	145	146	148	146	146	144	141	142	143	145	146	146
Std. Deviation	17.0	19.6	19.4	18.2	18.6	19.5	16.6	17.4	17.5	17.8	18.7	17.4
% Pre Sys BP <= 165	88%	85%	84%	86%	86%	90%	91%	90%	92%	87%	83%	85%



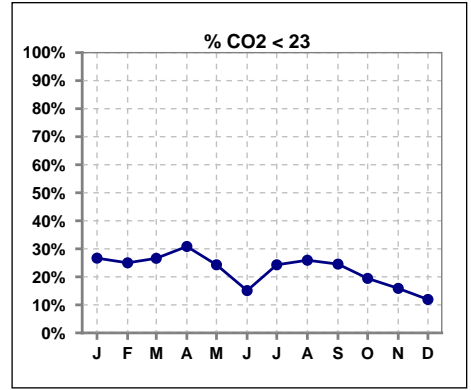
	Jan	Feb	Mar	Apr	May	Jun	Jul	Aug	Sep	Oct	Nov	Dec
# L processed/kg	105	109	109	106	107	106	106	108	109	108	107	110
# L processed/kg >= 0.8	86	93	93	87	87	87	89	92	94	91	90	93
Pop. Mean	1	1	1	1	1	1	1	1	1	1	1	1
Std. Deviation	0.3	0.3	0.2	0.3	0.3	0.3	0.3	0.3	0.3	0.3	0.3	0.3
% L processed/kg >= 0.8	82%	85%	85%	82%	81%	82%	84%	85%	86%	84%	84%	85%



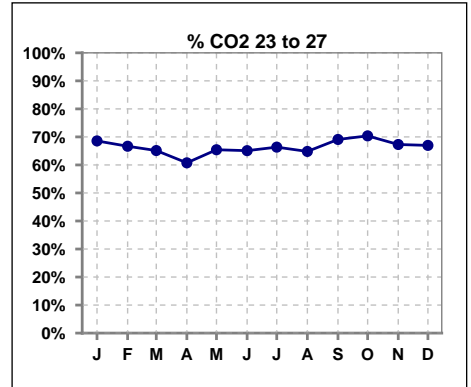
Methodology: a) All labs for 'Adequacy of Dialysis', 'Nutrition', 'Osteodystrophy', 'Anemia' and 'Diabetes' based on last value of month; b) BP's and #L processed are average of all values for month; c) Access data takes last access of month; d) Values for SGA and 'Infection Control' use most recent result.

I. ADEQUACY OF DIALYSIS - CONT.

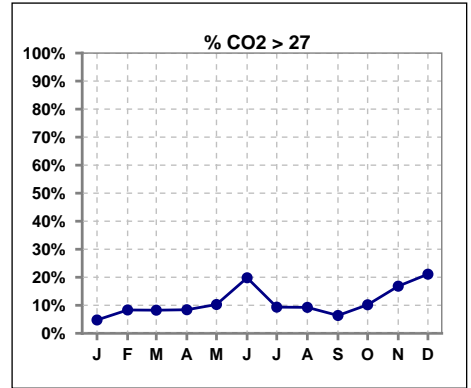
	Jan	Feb	Mar	Apr	May	Jun	Jul	Aug	Sep	Oct	Nov	Dec
# CO2	105	108	109	107	107	106	107	108	110	108	107	109
# CO2 < 23	28	27	29	33	26	16	26	28	27	21	17	13
Pop. Mean	24	24	24	24	24	25	24	24	24	25	25	25
Std. Deviation	2.62	2.81	2.69	2.55	2.94	2.71	2.89	3.07	2.72	2.82	2.76	2.77
% CO2 < 23	27%	25%	27%	31%	24%	15%	24%	26%	25%	19%	16%	12%



	Jan	Feb	Mar	Apr	May	Jun	Jul	Aug	Sep	Oct	Nov	Dec
# CO2	105	108	109	107	107	106	107	108	110	108	107	109
# CO2 23 to 27	72	72	71	65	70	69	71	70	76	76	72	73
Pop. Mean	24	24	24	24	24	25	24	24	24	25	25	25
Std. Deviation	2.62	2.81	2.69	2.55	2.94	2.71	2.89	3.07	2.72	2.82	2.76	2.77
% CO2 23 to 27	69%	67%	65%	61%	65%	65%	66%	65%	69%	70%	67%	67%



	Jan	Feb	Mar	Apr	May	Jun	Jul	Aug	Sep	Oct	Nov	Dec
# CO2	105	108	109	107	107	106	107	108	110	108	107	109
# CO2 > 27	5	9	9	9	11	21	10	10	7	11	18	23
Pop. Mean	24	24	24	24	24	25	24	24	24	25	25	25
Std. Deviation	2.62	2.81	2.69	2.55	2.94	2.71	2.89	3.07	2.72	2.82	2.76	2.77
% CO2 > 27	5%	8%	8%	8%	10%	20%	9%	9%	6%	10%	17%	21%

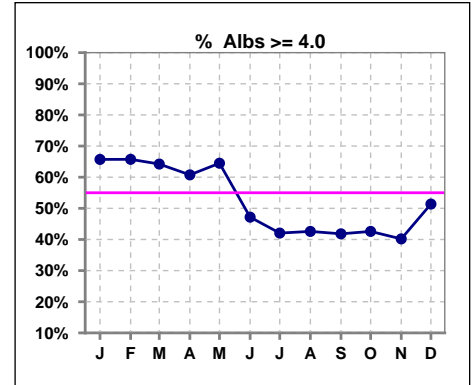


Methodology: a) All labs for 'Adequacy of Dialysis', 'Nutrition', 'Osteodystrophy', 'Anemia' and 'Diabetes' based on last value of month; b) BP's and #L processed are average of all values for month; c) Access data takes last access of month; d) Values for SGA and 'Infection Control' use most recent result.

*Albumin values use BCG method - as of July 2001

II. NUTRITION

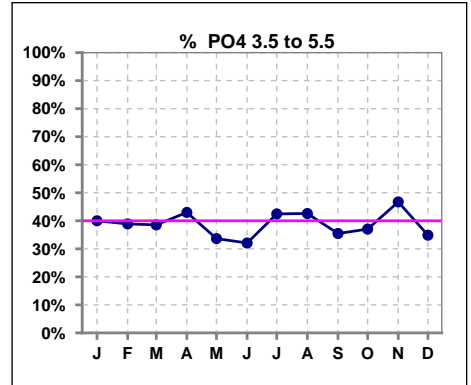
	Jan	Feb	Mar	Apr	May	Jun	Jul	Aug	Sep	Oct	Nov	Dec
# Albumin	105	108	109	107	107	106	107	108	110	108	107	109
# Albumin >= 4.0	69	71	70	65	69	50	45	46	46	46	43	56
Pop. Mean	4.1	4.0	4.0	4.0	4.0	3.9	3.9	3.8	3.8	3.8	3.8	3.9
Std. Deviation	0.37	0.40	0.37	0.36	0.37	0.44	0.44	0.43	0.47	0.48	0.45	0.51
% Alb >= 4.0	66%	66%	64%	61%	64%	47%	42%	43%	42%	43%	40%	51%



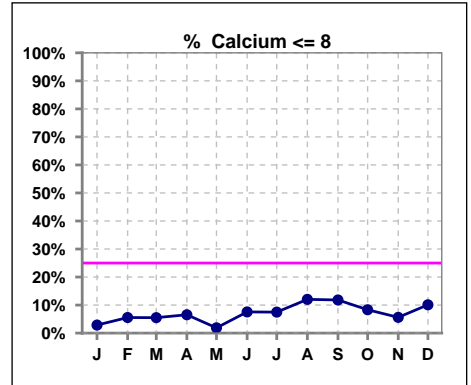
Lab methodology for PTH changed January 2012

III. OSTEODYSTROPHY

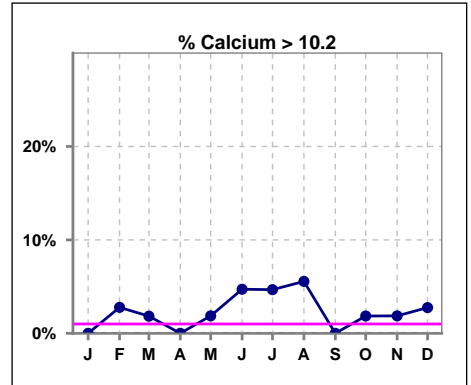
	Jan	Feb	Mar	Apr	May	Jun	Jul	Aug	Sep	Oct	Nov	Dec
# PO4	105	108	109	107	107	106	106	108	110	108	107	109
# PO4 3.5 to 5.5	42	42	42	46	36	34	45	46	39	40	50	38
Pop. Mean	5.9	5.9	5.9	5.8	6.1	6.3	6.1	5.9	5.9	6.0	5.8	6.2
Std. Deviation	1.83	2.18	1.85	1.88	2.03	2.13	2.05	2.02	1.78	1.81	2.06	2.06
% PO4 3.5 to 5.5	40%	39%	39%	43%	34%	32%	42%	43%	35%	37%	47%	35%



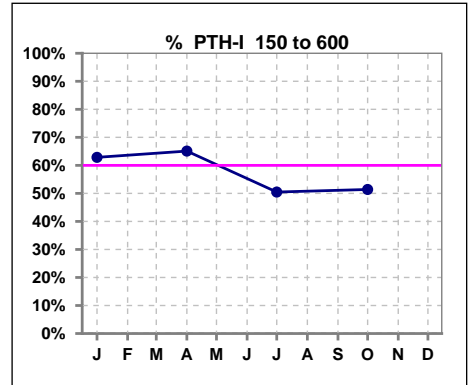
	Jan	Feb	Mar	Apr	May	Jun	Jul	Aug	Sep	Oct	Nov	Dec
# Calcium	105	108	109	107	107	106	107	108	110	108	107	109
# Calcium <= 8	3	6	6	7	2	8	8	13	13	9	6	11
Pop. Mean	9.2	9.3	9.2	9.1	9.3	9.2	9.1	9.0	8.9	8.9	9.1	9.1
Std. Deviation	0.60	0.67	0.62	0.63	0.59	0.76	0.89	0.75	0.66	0.69	0.70	0.73
% Calcium <= 8	3%	6%	6%	7%	2%	8%	7%	12%	12%	8%	6%	10%



	Jan	Feb	Mar	Apr	May	Jun	Jul	Aug	Sep	Oct	Nov	Dec
# Calcium	105	108	109	107	107	106	107	108	110	108	107	109
# Calcium > 10.2	0	3	2	0	2	5	5	6	0	2	2	3
Pop. Mean	9.2	9.3	9.2	9.1	9.3	9.2	9.1	9.0	8.9	8.9	9.1	9.1
Std. Deviation	0.60	0.67	0.62	0.63	0.59	0.76	0.89	0.75	0.66	0.69	0.70	0.73
% Calcium > 10.2	0%	3%	2%	0%	2%	5%	5%	6%	0%	2%	2%	3%



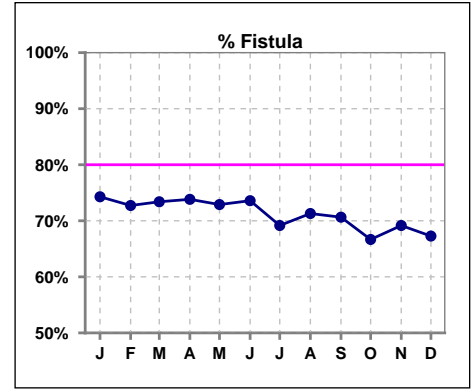
	Jan	Feb	Mar	Apr	May	Jun	Jul	Aug	Sep	Oct	Nov	Dec
# PTH-I	105			106			105			107		
# PTH-I 150 to 600	66			69			53			55		
Pop. Mean	473			456			631			591		
Std. Deviation	324			335			516			429		
% PTH-I 150 to 600	63%			65%			50%			51%		



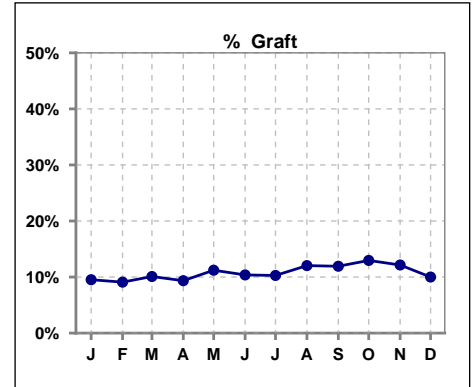
Methodology: a) All labs for 'Adequacy of Dialysis', 'Nutrition', 'Osteodystrophy', 'Anemia' and 'Diabetes' based on last value of month; b) BP's and #L processed are average of all values for month; c) Access data takes last access of month; d) Values for SGA and 'Infection Control' use most recent result.

IV. ACCESS

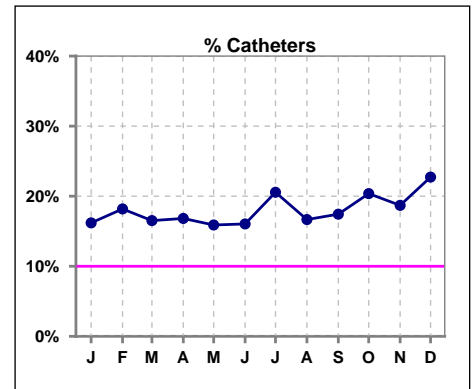
	Jan	Feb	Mar	Apr	May	Jun	Jul	Aug	Sep	Oct	Nov	Dec
# Access	105	110	109	107	107	106	107	108	109	108	107	110
# Fistula	78	80	80	79	78	78	74	77	77	72	74	74
% Fistula	74%	73%	73%	74%	73%	74%	69%	71%	71%	67%	69%	67%



	Jan	Feb	Mar	Apr	May	Jun	Jul	Aug	Sep	Oct	Nov	Dec
# Access	105	110	109	107	107	106	107	108	109	108	107	110
# Graft	10	10	11	10	12	11	11	13	13	14	13	11
% Graft	10%	9%	10%	9%	11%	10%	10%	12%	12%	13%	12%	10%



	Jan	Feb	Mar	Apr	May	Jun	Jul	Aug	Sep	Oct	Nov	Dec
# Access	105	110	109	107	107	106	107	108	109	108	107	110
# Catheters	17	20	18	18	17	17	22	18	19	22	20	25
% Catheters	16%	18%	17%	17%	16%	16%	21%	17%	17%	20%	19%	23%



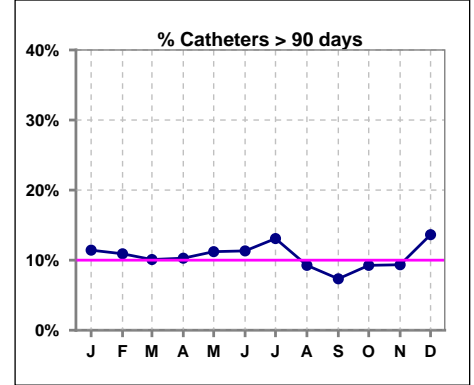
Methodology: a) All labs for 'Adequacy of Dialysis', 'Nutrition', 'Osteodystrophy', 'Anemia' and 'Diabetes' based on last value of month; b) BP's and #L processed are average of all values for month; c) Access data takes last access of month; d) Values for SGA and 'Infection Control' use most recent result.

IV. ACCESS - CONT.

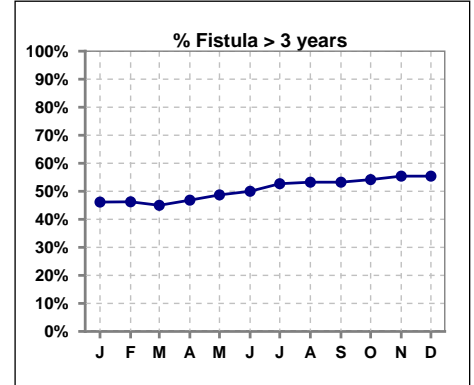
Catheters > 90 days

	Jan	Feb	Mar	Apr	May	Jun	Jul	Aug	Sep	Oct	Nov	Dec
# Access	105	110	109	107	107	106	107	108	109	108	107	110
# Catheters	12	12	11	11	12	12	14	10	8	10	10	15
% Catheters	11%	11%	10%	10%	11%	11%	13%	9%	7%	9%	9%	14%

Definition: Catheter in use on last treatment of the month



	Jan	Feb	Mar	Apr	May	Jun	Jul	Aug	Sep	Oct	Nov	Dec
# Fistula	78	80	80	79	78	78	74	77	77	72	74	74
# Fistula > 3 yrs	36	37	36	37	38	39	39	41	41	39	41	41
% Fistula > 3 yrs	46%	46%	45%	47%	49%	50%	53%	53%	53%	54%	55%	55%

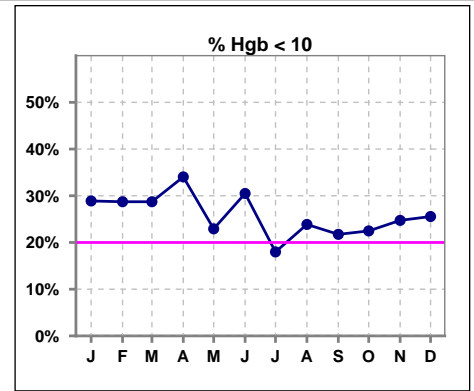


Methodology: a) All labs for 'Adequacy of Dialysis', 'Nutrition', 'Osteodystrophy', 'Anemia' and 'Diabetes' based on last value of month; b) BP's and #L processed are average of all values for month; c) Access data takes last access of month; d) Values for SGA and 'Infection Control' use most recent result.

V. ANEMIA

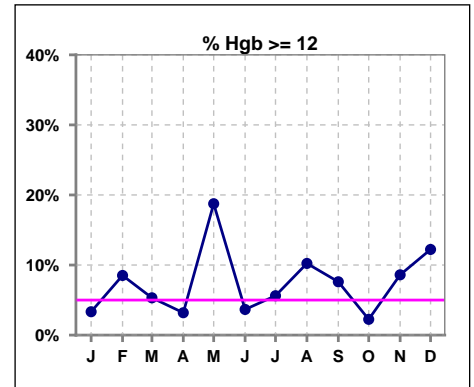
	Jan	Feb	Mar	Apr	May	Jun	Jul	Aug	Sep	Oct	Nov	Dec
# Hgb	90	94	94	94	96	82	89	88	92	89	93	90
# Hgb < 10	26	27	27	32	22	25	16	21	20	20	23	23
Pop. Mean	10.5	10.6	10.6	10.5	10.9	10.5	10.9	10.7	10.6	10.5	10.6	10.6
Std. Deviation	1.2	1.3	1.3	1.2	1.5	1.3	1.1	1.3	1.3	1.3	1.3	1.4
% Hgb < 10	29%	29%	29%	34%	23%	30%	18%	24%	22%	22%	25%	26%

Note: Excludes patients who received no ESA in month.



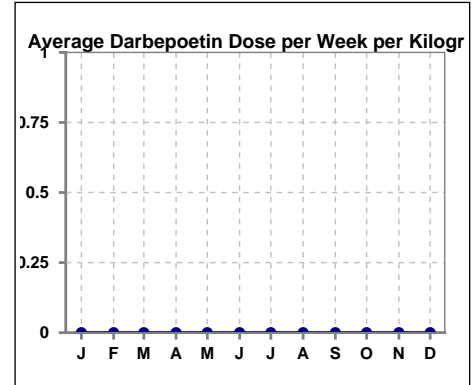
	Jan	Feb	Mar	Apr	May	Jun	Jul	Aug	Sep	Oct	Nov	Dec
# Hgb	90	94	94	94	96	82	89	88	92	89	93	90
# Hgb >= 12	3	8	5	3	18	3	5	9	7	2	8	11
Pop. Mean	10.5	10.6	10.6	10.5	10.9	10.5	10.9	10.7	10.6	10.5	10.6	10.6
Std. Deviation	1.2	1.3	1.3	1.2	1.5	1.3	1.1	1.3	1.3	1.3	1.3	1.4
% Hgb >= 12	3%	9%	5%	3%	19%	4%	6%	10%	8%	2%	9%	12%

Note: Excludes patients who received no ESA in month.



Average Darbepoetin Dose per Week per Kilogram

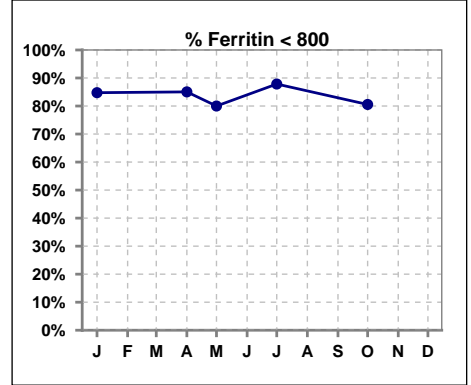
	Jan	Feb	Mar	Apr	May	Jun	Jul	Aug	Sep	Oct	Nov	Dec
# Average Darbepoetin	0	0	0	0	0	0	0	0	0	0	0	0



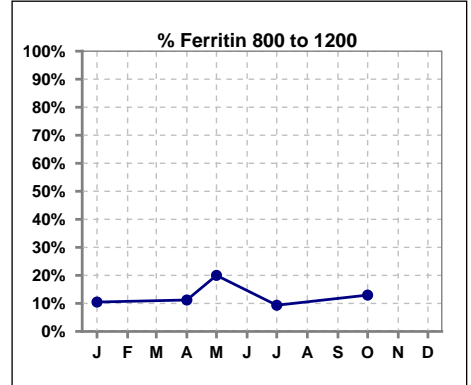
V. ANEMIA - CONT.

Iron Profile

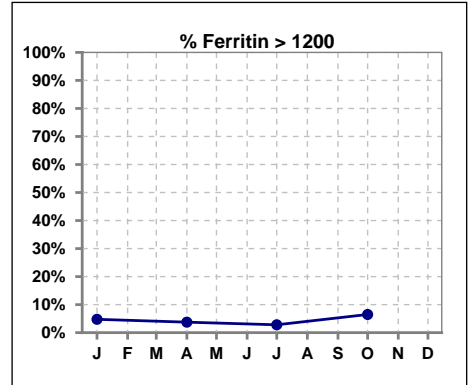
	Jan	Feb	Mar	Apr	May	Jun	Jul	Aug	Sep	Oct	Nov	Dec
# Ferritin	105			107	5		107			108		
# Ferritin < 800	89			91	4		94			87		
Pop. Mean	483			473	407		430			495		
Std. Deviation	340			349	280		304			418		
% Ferritin < 800	85%			85%	80%		88%			81%		



	Jan	Feb	Mar	Apr	May	Jun	Jul	Aug	Sep	Oct	Nov	Dec
# Ferritin	105			107	5		107			108		
# Ferritin 800 to 1200	11			12	1		10			14		
Pop. Mean	483			473	407		430			495		
Std. Deviation	340			349	280		304			418		
% Ferritin 800 to 1200	10%			11%	20%		9%			13%		



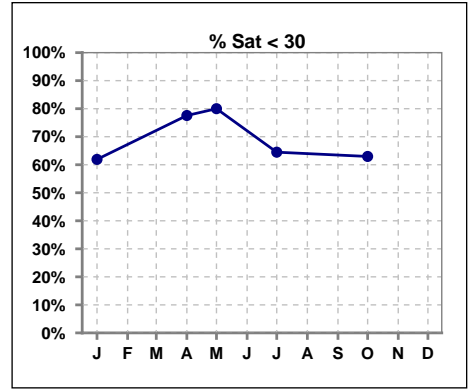
	Jan	Feb	Mar	Apr	May	Jun	Jul	Aug	Sep	Oct	Nov	Dec
# Ferritin	105			107	5		107			108		
# Ferritin > 1200	5			4			3			7		
Pop. Mean	483			473	407		430			495		
Std. Deviation	340			349	280		304			418		
% Ferritin > 1200	5%			4%			3%			6%		



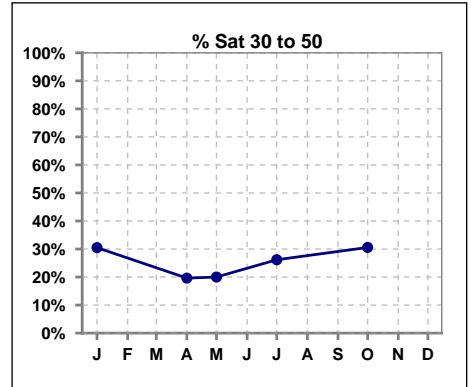
Methodology: a) All labs for 'Adequacy of Dialysis', 'Nutrition', 'Osteodystrophy', 'Anemia' and 'Diabetes' based on last value of month; b) BP's and #L processed are average of all values for month; c) Access data takes last access of month; d) Values for SGA and 'Infection Control' use most recent result.

V. ANEMIA - CONT.

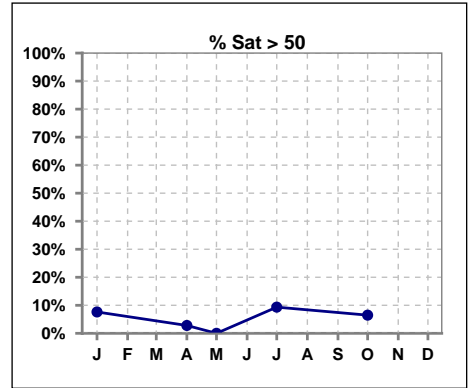
	Jan	Feb	Mar	Apr	May	Jun	Jul	Aug	Sep	Oct	Nov	Dec
# % Sat	105			107	5		107			108		
# % Sat < 30	65			83	4		69			68		
Pop. Mean	29			24	20		30			30		
Std. Deviation	17			11	8		16			16		
% % Sat < 30	62%			78%	80%		64%			63%		



	Jan	Feb	Mar	Apr	May	Jun	Jul	Aug	Sep	Oct	Nov	Dec
# % Sat	105			107	5		107			108		
# % Sat 30 to 50	32			21	1		28			33		
Pop. Mean	29			24	20		30			30		
Std. Deviation	17			11	8		16			16		
% % Sat 30 to 50	30%			20%	20%		26%			31%		



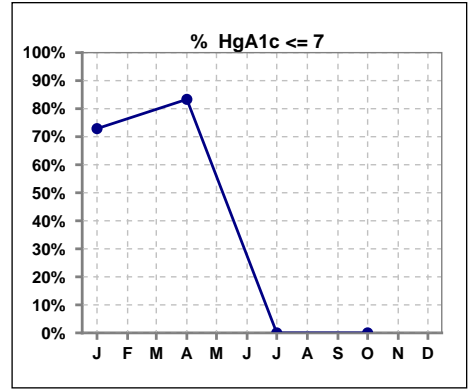
	Jan	Feb	Mar	Apr	May	Jun	Jul	Aug	Sep	Oct	Nov	Dec
# % Sat	105			107	5		107			108		
# % Sat > 50	8			3	0		10			7		
Pop. Mean	29			24	20		30			30		
Std. Deviation	17			11	8		16			16		
% % Sat > 50	8%			3%	0%		9%			6%		



Methodology: a) All labs for 'Adequacy of Dialysis', 'Nutrition', 'Osteodystrophy', 'Anemia' and 'Diabetes' based on last value of month; b) BP's and #L processed are average of all values for month; c) Access data takes last access of month; d) Values for SGA and 'Infection Control' use most recent result.

VI. Diabetes

	Jan	Feb	Mar	Apr	May	Jun	Jul	Aug	Sep	Oct	Nov	Dec
# HgA1c	59			60			0			0		
# HgA1c <= 7	43			50			0			0		
Pop. Mean	6.3			6.1			0			0		
Std. Deviation	1.40			1.34			0			0		
% HgA1c <= 7	73%			83%			0%			0%		

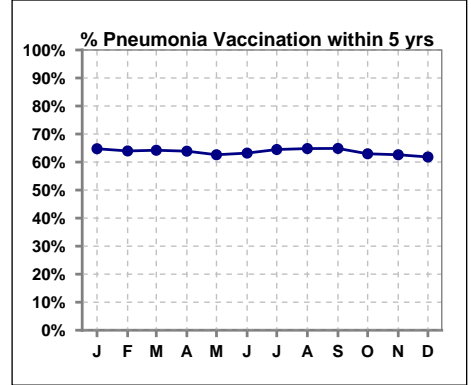


Methodology: a) All labs for 'Adequacy of Dialysis', 'Nutrition', 'Osteodystrophy', 'Anemia' and 'Diabetes' based on last value of month; b) BP's and #L processed are average of all values for month; c) Access data takes last access of month; d) Values for SGA and 'Infection Control' use most recent result.

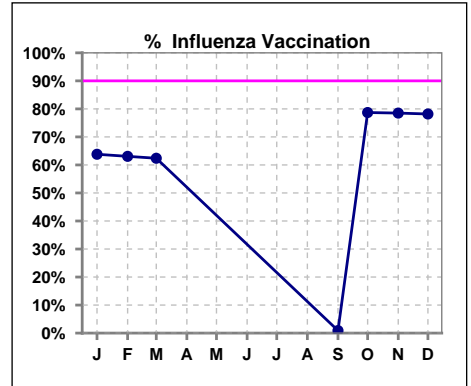
VII. Infection Control

Pneumonia vaccination within the past five years

	Jan	Feb	Mar	Apr	May	Jun	Jul	Aug	Sep	Oct	Nov	Dec
# Patient	105	111	109	108	107	106	107	108	111	108	107	110
# Pneumonia	68	71	70	69	67	67	69	70	72	68	67	68
% Pneumonia	65%	64%	64%	64%	63%	63%	64%	65%	65%	63%	63%	62%



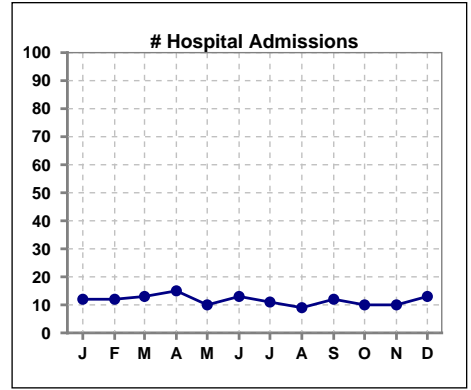
	Jan	Feb	Mar	Apr	May	Jun	Jul	Aug	Sep	Oct	Nov	Dec
# Patient	105	111	109						111	108	107	110
# Influenza	67	70	68						1	85	84	86
% Influenza	64%	63%	62%						1%	79%	79%	78%



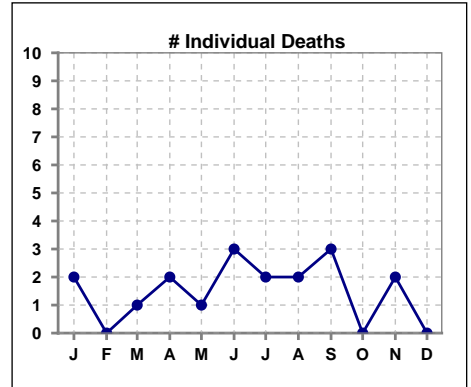
Methodology: a) All labs for 'Adequacy of Dialysis', 'Nutrition', 'Osteodystrophy', 'Anemia' and 'Diabetes' based on last value of month; b) BP's and #L processed are average of all values for month; c) Access data takes last access of month; d) Values for SGA and 'Infection Control' use most recent result.

VIII. Outcome measures

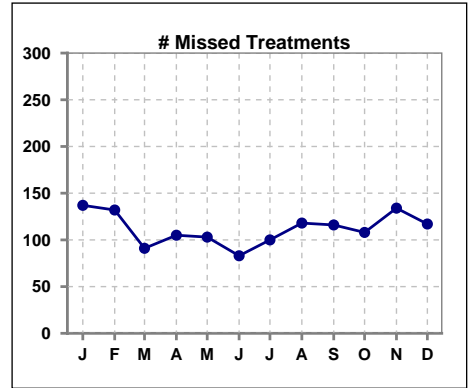
	Jan	Feb	Mar	Apr	May	Jun	Jul	Aug	Sep	Oct	Nov	Dec
# Patient	105	111	109	108	107	106	107	108	111	108	107	110
# Hospital Admissions	12	12	13	15	10	13	11	9	12	10	10	13



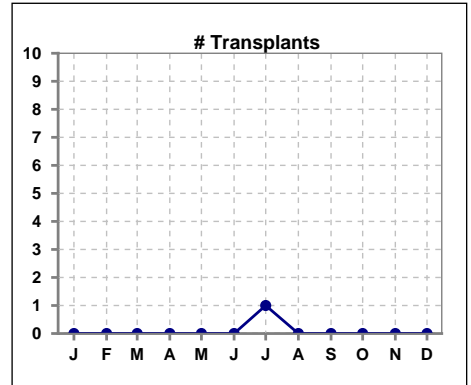
	Jan	Feb	Mar	Apr	May	Jun	Jul	Aug	Sep	Oct	Nov	Dec
# Patient	105	111	109	108	107	106	107	108	111	108	107	110
# Individual Deaths	2	0	1	2	1	3	2	2	3	0	2	0



	Jan	Feb	Mar	Apr	May	Jun	Jul	Aug	Sep	Oct	Nov	Dec
# Patient	105	111	109	108	107	106	107	108	111	108	107	110
# Missed Treatments	137	132	91	105	103	83	100	118	116	108	134	117



	Jan	Feb	Mar	Apr	May	Jun	Jul	Aug	Sep	Oct	Nov	Dec
# Patient	105	111	109	108	107	106	107	108	111	108	107	110
# Transplants	0	0	0	0	0	0	1	0	0	0	0	0



Methodology: a) All labs for 'Adequacy of Dialysis', 'Nutrition', 'Osteodystrophy', 'Anemia' and 'Diabetes' based on last value of month; b) BP's and #L processed are average of all values for month; c) Access data takes last access of month; d) Values for SGA and 'Infection Control' use most recent result.