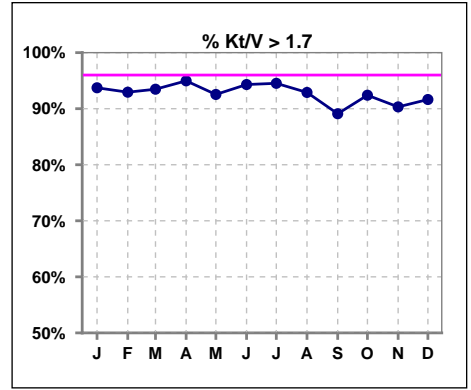
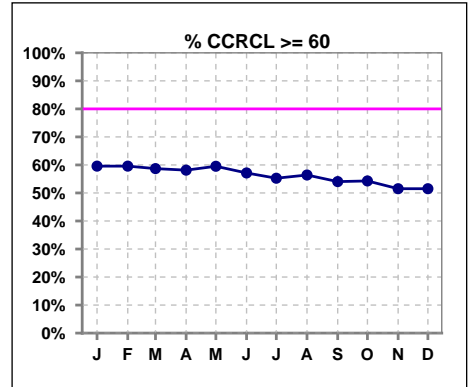


I. ADEQUACY OF DIALYSIS

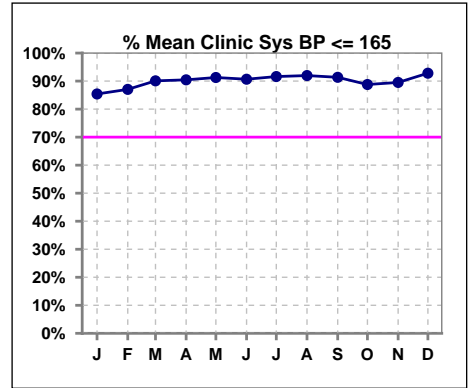
	Jan	Feb	Mar	Apr	May	Jun	Jul	Aug	Sep	Oct	Nov	Dec
# Kt/V - CA/CC PD	319	326	337	338	335	334	329	324	321	316	310	311
# Kt/V >= 1.7	299	303	315	321	310	315	311	301	286	292	280	285
Pop. Mean	2.32	2.29	2.26	2.26	2.25	2.25	2.28	2.26	2.26	2.26	2.23	2.24
Std. Deviation	0.59	0.62	0.59	0.57	0.60	0.58	0.66	0.55	0.61	0.59	0.57	0.57
% Kt/V >= 1.7	94%	93%	93%	95%	93%	94%	95%	93%	89%	92%	90%	92%



	Jan	Feb	Mar	Apr	May	Jun	Jul	Aug	Sep	Oct	Nov	Dec
# CRCL CA/CC PD	47	47	46	43	42	42	38	39	37	35	33	33
# CCRCL >= 60	28	28	27	25	25	24	21	22	20	19	17	17
Pop. Mean	75.37	75.37	74.85	75.68	77.26	76.35	76.44	76.74	75.91	73.42	73.30	73.30
Std. Deviation	33.08	33.08	33.26	33.84	33.83	33.95	35.40	34.98	35.70	30.15	30.88	30.88
% CCRCL >= 60	60%	60%	59%	58%	60%	57%	55%	56%	54%	54%	52%	52%

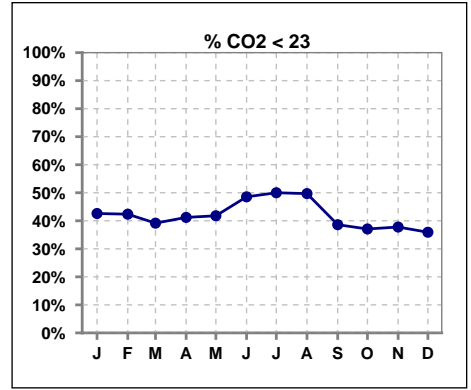


	Jan	Feb	Mar	Apr	May	Jun	Jul	Aug	Sep	Oct	Nov	Dec
# Mean Clinic Sys BP	322	332	343	335	344	332	334	324	312	312	315	306
# Sys BP <= 165	277	291	312	306	317	305	308	300	285	278	282	287
Pop. Mean	148	141	141	143	137	139	137	140	138	139	139	138
Std. Deviation	84.1	20.5	38.1	71.0	21.2	19.5	20.7	47.9	19.7	20.0	20.9	20.0
% Sys BP <=165	85%	87%	90%	90%	91%	91%	92%	92%	91%	89%	90%	93%

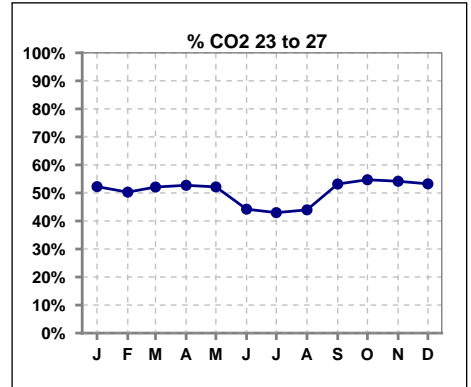


I. ADEQUACY OF DIALYSIS - CONT.

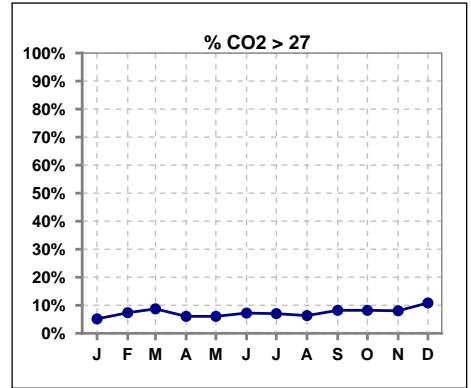
	Jan	Feb	Mar	Apr	May	Jun	Jul	Aug	Sep	Oct	Nov	Dec
# CO2	331	340	355	347	347	346	342	332	329	329	323	323
# CO2 < 23	141	144	139	143	145	168	171	165	127	122	122	116
Pop. Mean	23	23	23	23	23	23	23	23	23	24	23	24
Std. Deviation	3.11	3.13	3.18	3.09	3.01	3.23	3.17	3.03	3.08	4.62	3.07	3.14
% CO2 < 23	43%	42%	39%	41%	42%	49%	50%	50%	39%	37%	38%	36%



	Jan	Feb	Mar	Apr	May	Jun	Jul	Aug	Sep	Oct	Nov	Dec
# CO2	331	340	355	347	347	346	342	332	329	329	323	323
# CO2 23 to 27	173	171	185	183	181	153	147	146	175	180	175	172
Pop. Mean	23	23	23	23	23	23	23	23	23	24	23	24
Std. Deviation	3.11	3.13	3.18	3.09	3.01	3.23	3.17	3.03	3.08	4.62	3.07	3.14
% CO2 23 to 27	52%	50%	52%	53%	52%	44%	43%	44%	53%	55%	54%	53%



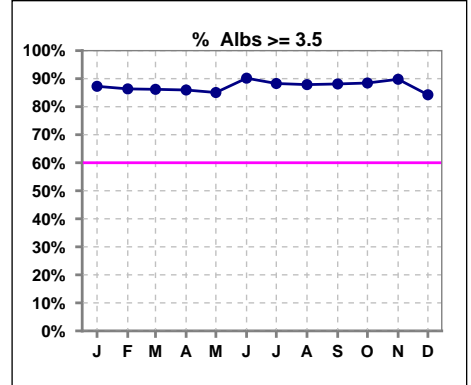
	Jan	Feb	Mar	Apr	May	Jun	Jul	Aug	Sep	Oct	Nov	Dec
# CO2	331	340	355	347	347	346	342	332	329	329	323	323
# CO2 > 27	17	25	31	21	21	25	24	21	27	27	26	35
Pop. Mean	23	23	23	23	23	23	23	23	23	24	23	24
Std. Deviation	3.11	3.13	3.18	3.09	3.01	3.23	3.17	3.03	3.08	4.62	3.07	3.14
% CO2 > 27	5%	7%	9%	6%	6%	7%	7%	6%	8%	8%	8%	11%



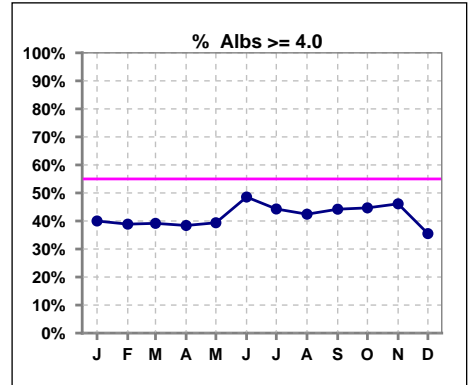
*Albumin values use BCG method - as of July 2001

II. NUTRITION

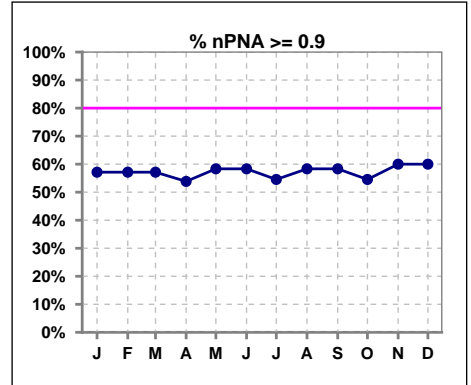
	Jan	Feb	Mar	Apr	May	Jun	Jul	Aug	Sep	Oct	Nov	Dec
# Albumin	330	337	355	349	348	346	341	330	328	329	323	324
# Albumin >= 3.5	288	291	306	300	296	312	301	290	289	291	290	273
Pop. Mean	3.8	3.8	3.8	3.8	3.8	3.9	3.9	3.9	3.9	3.9	3.9	3.8
Std. Deviation	0.37	0.39	0.36	0.38	0.38	0.39	0.39	0.38	0.40	0.39	0.38	0.39
% Alb >= 3.5	87%	86%	86%	86%	85%	90%	88%	88%	88%	88%	90%	84%



	Jan	Feb	Mar	Apr	May	Jun	Jul	Aug	Sep	Oct	Nov	Dec
# Albumin	330	337	355	349	348	346	341	330	328	329	323	324
# Albumin >= 4.0	132	131	139	134	137	168	151	140	145	147	149	115
Pop. Mean	3.8	3.8	3.8	3.8	3.8	3.9	3.9	3.9	3.9	3.9	3.9	3.8
Std. Deviation	0.37	0.39	0.36	0.38	0.38	0.39	0.39	0.38	0.40	0.39	0.38	0.39
% Alb >= 4.0	40%	39%	39%	38%	39%	49%	44%	42%	44%	45%	46%	35%



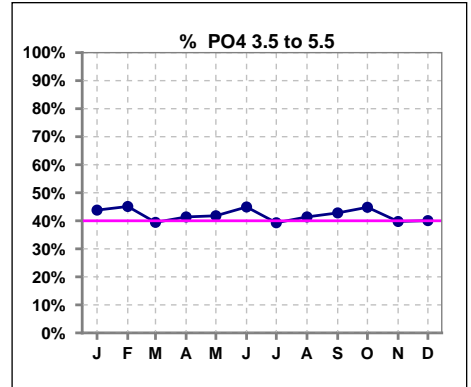
	Jan	Feb	Mar	Apr	May	Jun	Jul	Aug	Sep	Oct	Nov	Dec
# nPNA	14	14	14	13	12	12	11	12	12	11	10	10
# nPNA >= 0.9	8	8	8	7	7	7	6	7	7	6	6	6
Pop. Mean	1.1	1.1	1.1	1.1	1.1	1.1	1.1	1.1	1.1	1.0	1.1	1.1
Std. Deviation	0.38	0.38	0.38	0.39	0.39	0.39	0.40	0.39	0.39	0.34	0.34	0.34
% nPNA >= 0.9	57%	57%	57%	54%	58%	58%	55%	58%	58%	55%	60%	60%



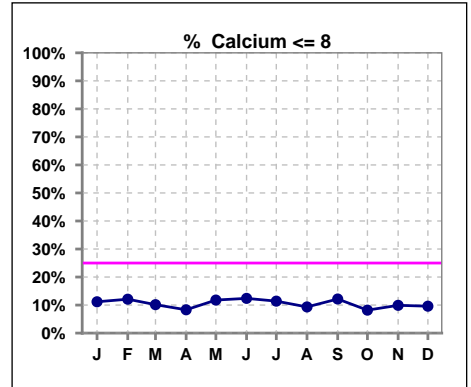
Lab methodology for PTH changed January 2012

III. OSTEODYSTROPHY

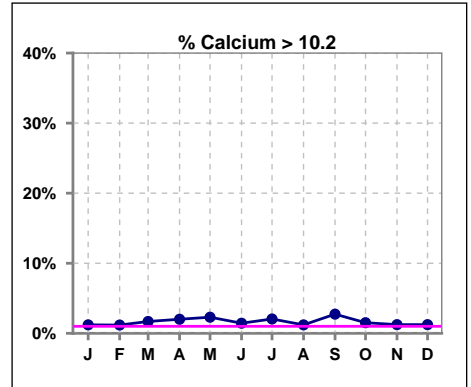
	Jan	Feb	Mar	Apr	May	Jun	Jul	Aug	Sep	Oct	Nov	Dec
# PO4	331	337	355	348	347	345	341	331	327	328	322	322
# PO4 3.5 to 5.5	145	152	140	144	145	155	134	137	140	147	128	129
Pop. Mean	5.8	6.0	5.9	5.9	6.1	6.0	6.2	6.0	5.9	6.0	6.0	6.0
Std. Deviation	1.75	1.82	1.86	1.91	1.96	1.89	1.92	1.86	1.82	1.88	1.90	1.87
% PO4 3.5 to 5.5	44%	45%	39%	41%	42%	45%	39%	41%	43%	45%	40%	40%



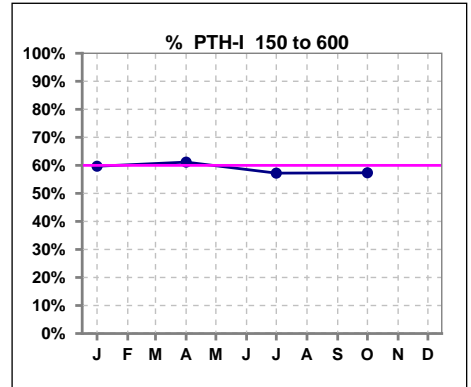
	Jan	Feb	Mar	Apr	May	Jun	Jul	Aug	Sep	Oct	Nov	Dec
# Calcium	331	339	355	349	348	347	342	332	329	330	323	323
# Calcium <= 8	37	41	36	29	41	43	39	31	40	27	32	31
Pop. Mean	9.0	8.9	8.9	8.9	8.9	8.9	8.8	8.9	8.9	9.0	9.0	8.9
Std. Deviation	0.71	0.72	0.72	0.71	0.74	0.73	0.71	0.67	0.73	0.69	0.73	0.72
% Calcium <= 8	11%	12%	10%	8%	12%	12%	11%	9%	12%	8%	10%	10%



	Jan	Feb	Mar	Apr	May	Jun	Jul	Aug	Sep	Oct	Nov	Dec
# Calcium	331	339	355	349	348	347	342	332	329	330	323	323
# Calcium > 10.2	4	4	6	7	8	5	7	4	9	5	4	4
Pop. Mean	9.0	8.9	8.9	8.9	8.9	8.9	8.8	8.9	8.9	9.0	9.0	8.9
Std. Deviation	0.71	0.72	0.72	0.71	0.74	0.73	0.71	0.67	0.73	0.69	0.73	0.72
% Calcium > 10.2	1%	1%	2%	2%	2%	1%	2%	1%	3%	2%	1%	1%



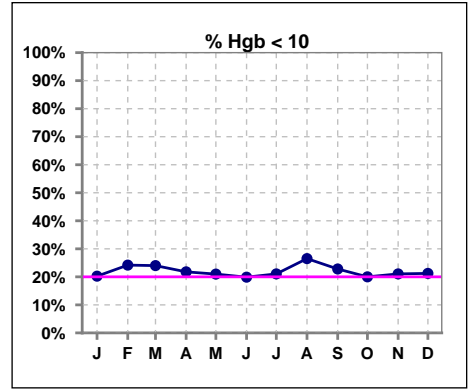
	Jan	Feb	Mar	Apr	May	Jun	Jul	Aug	Sep	Oct	Nov	Dec
# PTH-I	325			345			339			326		
# PTH-I 150 to 600	194			211			194			187		
Pop. Mean	466			458			457			423		
Std. Deviation	363			336			342			365		
% PTH-I 150 to 600	60%			61%			57%			57%		



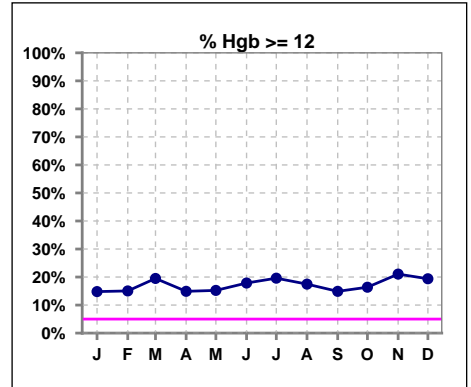
Methodology: a) KtV, CRCL and nPNa values are 4 month rolling mean of last value for each month, all other report lab results are based on last value of month; b) BP's are average of all values for month.

IV. ANEMIA

	Jan	Feb	Mar	Apr	May	Jun	Jul	Aug	Sep	Oct	Nov	Dec
# Hgb	331	339	354	349	348	347	342	332	329	330	323	325
# Hgb < 10	67	82	85	76	73	69	72	88	75	66	68	69
Pop. Mean	10.8	10.8	10.8	10.8	10.9	10.9	10.8	10.8	10.8	10.9	11.0	10.9
Std. Deviation	1.3	1.5	1.4	1.3	1.4	1.4	1.4	1.4	1.4	1.4	1.4	1.4
% Hgb < 10	20%	24%	24%	22%	21%	20%	21%	27%	23%	20%	21%	21%



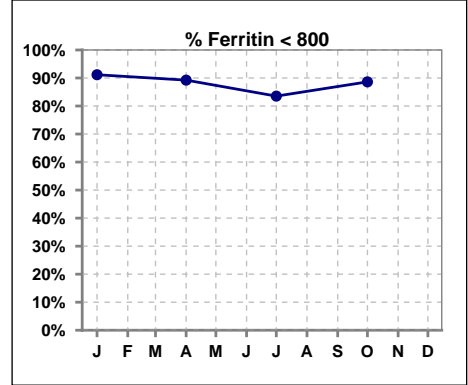
	Jan	Feb	Mar	Apr	May	Jun	Jul	Aug	Sep	Oct	Nov	Dec
# Hgb	331	339	354	349	348	347	342	332	329	330	323	325
# Hgb >= 12	49	51	69	52	53	62	67	58	49	54	68	63
Pop. Mean	10.8	10.8	10.8	10.8	10.9	10.9	10.8	10.8	10.8	10.9	11.0	10.9
Std. Deviation	1.3	1.5	1.4	1.3	1.4	1.4	1.4	1.4	1.4	1.4	1.4	1.4
% Hgb >= 12	15%	15%	19%	15%	15%	18%	20%	17%	15%	16%	21%	19%



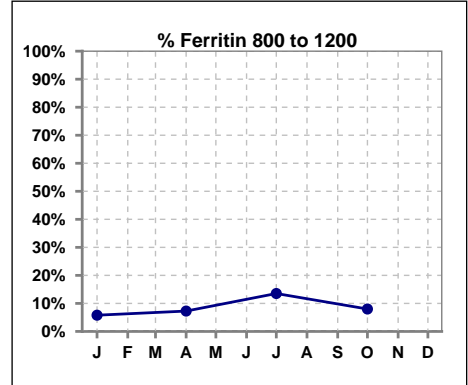
IV. ANEMIA - CONT.

Iron Profile

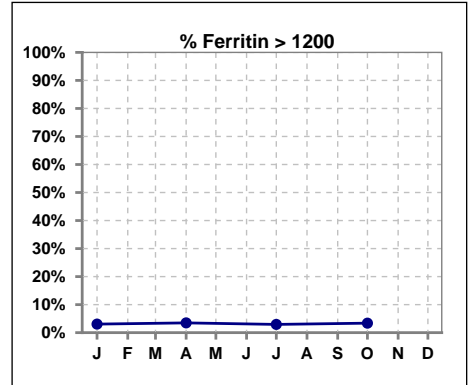
	Jan	Feb	Mar	Apr	May	Jun	Jul	Aug	Sep	Oct	Nov	Dec
# Ferritin	328			344			340			325		
# Ferritin < 800	299			307			284			288		
Pop. Mean	379			403			460			440		
Std. Deviation	352			358			401			360		
% Ferritin < 800	91%			89%			84%			89%		



	Jan	Feb	Mar	Apr	May	Jun	Jul	Aug	Sep	Oct	Nov	Dec
# Ferritin	328			344			340			325		
# Ferritin 800 to 1200	19			25			46			26		
Pop. Mean	379			403			460			440		
Std. Deviation	352			358			401			360		
% Ferritin 800 to 1200	6%			7%			14%			8%		

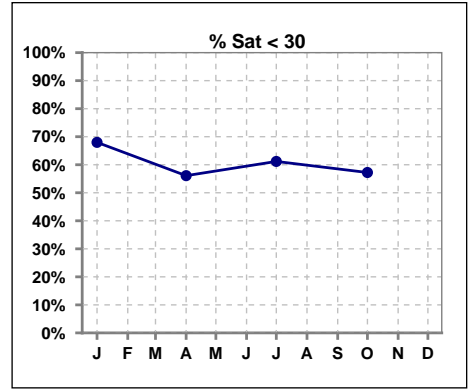


	Jan	Feb	Mar	Apr	May	Jun	Jul	Aug	Sep	Oct	Nov	Dec
# Ferritin	328			344			340			325		
# Ferritin > 1200	10			12			10			11		
Pop. Mean	379			403			460			440		
Std. Deviation	352			358			401			360		
% Ferritin > 1200	3%			3%			3%			3%		

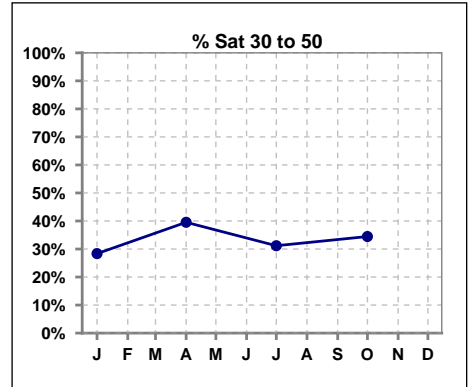


IV. ANEMIA - CONT.

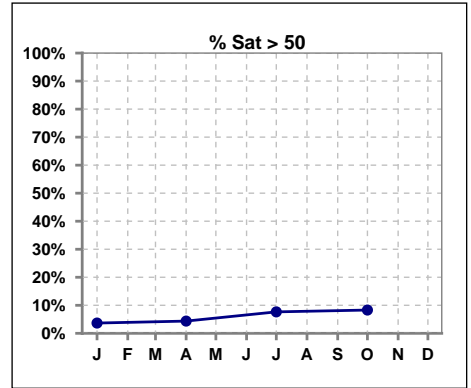
	Jan	Feb	Mar	Apr	May	Jun	Jul	Aug	Sep	Oct	Nov	Dec
# % Sat	328			344			340			325		
# % Sat < 30	223			193			208			186		
Pop. Mean	27			29			31			31		
Std. Deviation	12			14			24			15		
% % Sat < 30	68%			56%			61%			57%		



	Jan	Feb	Mar	Apr	May	Jun	Jul	Aug	Sep	Oct	Nov	Dec
# % Sat	328			344			340			325		
# % Sat 30 to 50	93			136			106			112		
Pop. Mean	27			29			31			31		
Std. Deviation	12			14			24			15		
% Sat% 30 to 50	28%			40%			31%			34%		



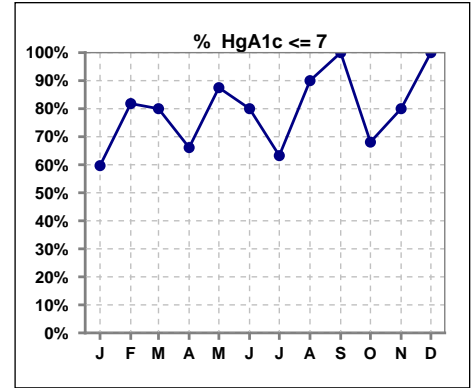
	Jan	Feb	Mar	Apr	May	Jun	Jul	Aug	Sep	Oct	Nov	Dec
# % Sat	328			344			340			325		
# % Sat > 50	12			15			26			27		
Pop. Mean	27			29			31			31		
Std. Deviation	12			14			24			15		
% Sat% > 50	4%			4%			8%			8%		



Methodology: a) Kt/V, CRCL and nPNa values are 4 month rolling mean of last value for each month, all other report lab results are based on last value of month; b) BP's are average of all values for month.

V. Diabetes

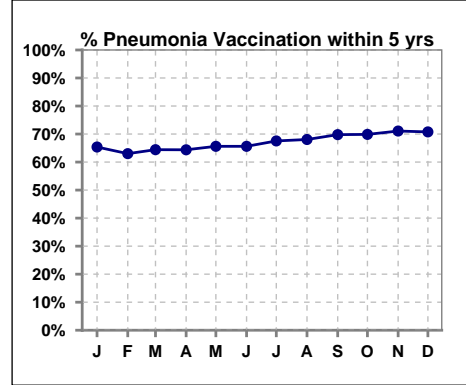
	Jan	Feb	Mar	Apr	May	Jun	Jul	Aug	Sep	Oct	Nov	Dec
# HgA1c	181	11	15	183	8	5	185	10	7	166	5	4
# HgA1c <= 7	108	9	12	121	7	4	117	9	7	113	4	4
Pop. Mean	6.8	5.9	6.3	6.7	6.0	6.1	6.7	6.0	6.0	6.6	6.0	5.5
Std. Deviation	1.47	1.19	1.04	1.57	0.77	1.07	1.38	1.08	0.33	1.27	0.90	0.87
% HgA1c <= 7	60%	82%	80%	66%	88%	80%	63%	90%	100%	68%	80%	100%



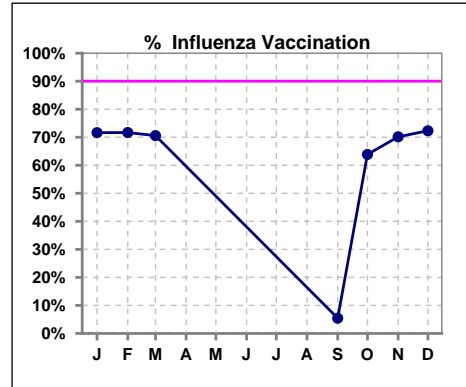
VI. Infection Control

Pneumonia vaccination within the past five years

	Jan	Feb	Mar	Apr	May	Jun	Jul	Aug	Sep	Oct	Nov	Dec
# Patient	335	346	357	351	349	349	345	335	331	332	325	325
# Pneumonia	219	218	230	226	229	229	233	228	231	232	231	230
% Pneumonia	65%	63%	64%	64%	66%	66%	68%	68%	70%	70%	71%	71%



	Jan	Feb	Mar	Apr	May	Jun	Jul	Aug	Sep	Oct	Nov	Dec
# Patient	335	346	357						331	332	325	325
# Influenza	240	248	252						18	212	228	235
% Influenza	72%	72%	71%						5%	64%	70%	72%



Exit Site Infection Rate

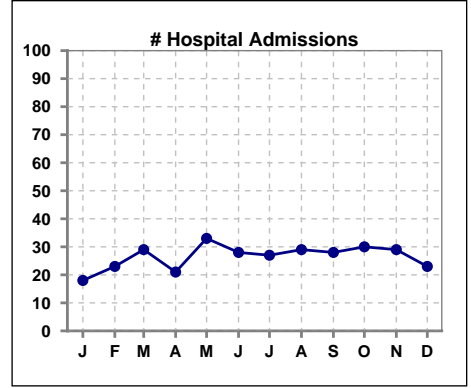
	Jan	Feb	Mar	Apr	May	Jun	Jul	Aug	Sep	Oct	Nov	Dec
Current Month	81.71	303.94	171.22	84.87	86.35	165.29	341.98	55.75	318.97	323.37	0	0
Rolling Year-to-date	0.10	0.09	0.08	0.09	0.10	0.10	0.09	0.11	0.11	0.09	0.10	0.09

Peritonitis Infection Rate

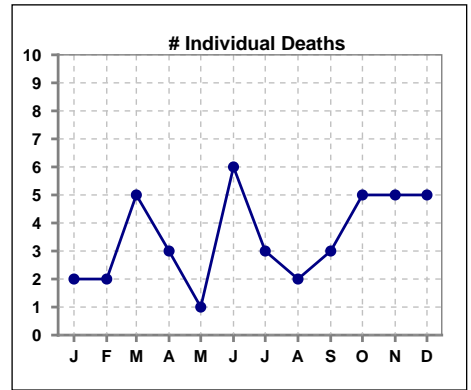
	Jan	Feb	Mar	Apr	May	Jun	Jul	Aug	Sep	Oct	Nov	Dec
Current Month	46.69	50.66	85.61	30.86	38.38	55.10	68.40	25.73	35.44	80.84	102.48	80.60
Rolling Year-to-date	0.24	0.24	0.23	0.26	0.26	0.25	0.23	0.26	0.29	0.25	0.27	0.25

VIII. Outcome measures

	Jan	Feb	Mar	Apr	May	Jun	Jul	Aug	Sep	Oct	Nov	Dec
# Patient	335	346	357	351	349	349	345	335	331	332	325	325
# Hospital Admissions	18	23	29	21	33	28	27	29	28	30	29	23



	Jan	Feb	Mar	Apr	May	Jun	Jul	Aug	Sep	Oct	Nov	Dec
# Patient	335	346	357	351	349	349	345	335	331	332	325	325
# Individual Deaths	2	2	5	3	1	6	3	2	3	5	5	5



	Jan	Feb	Mar	Apr	May	Jun	Jul	Aug	Sep	Oct	Nov	Dec
# Patient	335	346	357	351	349	349	345	335	331	332	325	325
# Transplants	3	1	0	2	4	3	6	8	3	4	2	0

