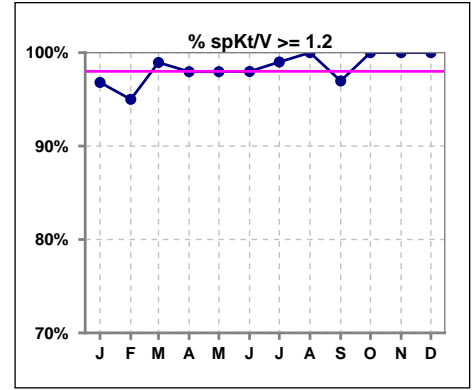
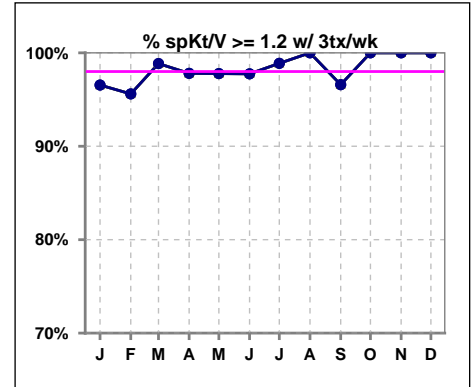


I. ADEQUACY OF DIALYSIS

	Jan	Feb	Mar	Apr	May	Jun	Jul	Aug	Sep	Oct	Nov	Dec
# spKt/V	94	100	95	98	98	99	100	100	99	99	97	97
# spKt/V >= 1.2	91	95	94	96	96	97	99	100	96	99	97	97
Pop. Mean	1.66	1.60	1.66	1.62	1.65	1.63	1.67	1.64	1.67	1.65	1.71	1.66
Std. Deviation	0.30	0.29	0.32	0.28	0.27	0.32	0.26	0.29	0.32	0.25	0.29	0.27
% spKt/V >= 1.2	97%	95%	99%	98%	98%	98%	99%	100%	97%	100%	100%	100%



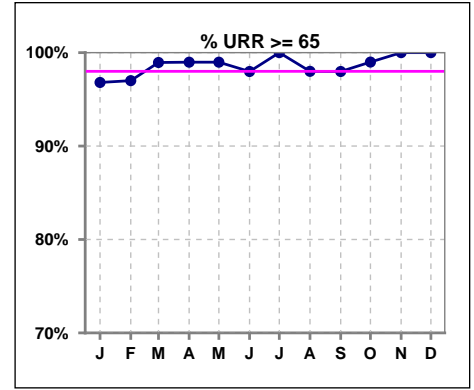
	Jan	Feb	Mar	Apr	May	Jun	Jul	Aug	Sep	Oct	Nov	Dec
# spKt/V w/ 3tx/wk	87	91	87	91	90	89	89	90	88	85	82	81
# spKt/V >= 1.2 w/3tx/wk	84	87	86	89	88	87	88	90	85	85	82	81
Pop. Mean	1.66	1.60	1.64	1.62	1.64	1.64	1.67	1.63	1.66	1.65	1.73	1.66
Std. Deviation	0.31	0.29	0.30	0.28	0.27	0.33	0.27	0.30	0.32	0.25	0.29	0.27
% >= 1.2 w/3tx/wk	97%	96%	99%	98%	98%	98%	99%	100%	97%	100%	100%	100%



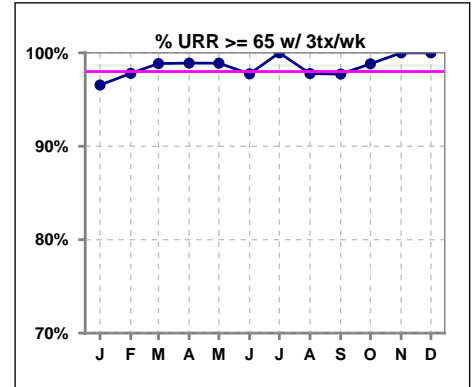
Methodology: a) All labs for 'Adequacy of Dialysis', 'Nutrition', 'Osteodystrophy', 'Anemia' and 'Diabetes' based on last value of month; b) BP's and #L processed are average of all values for month; c) Access data takes last access of month; d) Values for SGA and 'Infection Control' use most recent result.

I. ADEQUACY OF DIALYSIS - CONT.

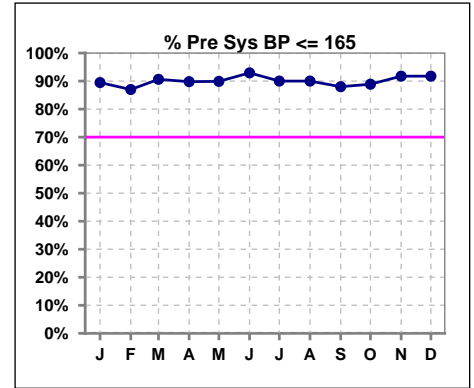
	Jan	Feb	Mar	Apr	May	Jun	Jul	Aug	Sep	Oct	Nov	Dec
# URR	94	100	95	98	98	99	100	100	99	99	97	97
# URR >= 65	91	97	94	97	97	97	100	98	97	98	97	97
Pop. Mean	76	75	76	75	76	75	76	75	76	76	77	76
Std. Deviation	5.91	5.88	5.73	5.51	5.34	7.63	4.91	5.41	6.03	4.99	5.36	5.03
% URR >= 65	97%	97%	99%	99%	99%	98%	100%	98%	98%	99%	100%	100%



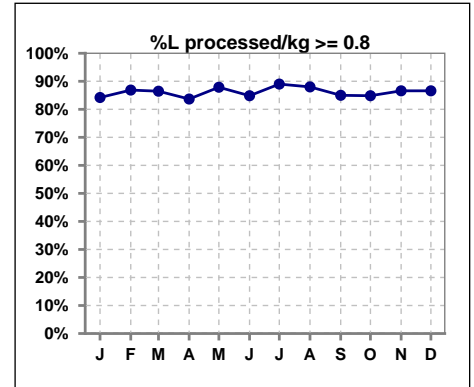
	Jan	Feb	Mar	Apr	May	Jun	Jul	Aug	Sep	Oct	Nov	Dec
# URR w/ 3tx/wk	87	91	87	91	90	89	89	90	88	85	82	81
# URR>=65 w/ 3tx/wk	84	89	86	90	89	87	89	88	86	84	82	81
Pop. Mean	76	75	75	75	75	75	76	75	76	76	77	76
Std. Deviation	6.10	5.82	5.58	5.59	5.21	7.88	5.01	5.52	5.99	4.97	5.17	5.14
% URR>=65 w/ 3tx/wk	97%	98%	99%	99%	99%	98%	100%	98%	98%	99%	100%	100%



	Jan	Feb	Mar	Apr	May	Jun	Jul	Aug	Sep	Oct	Nov	Dec
# Pre Sys BP	95	100	96	98	99	99	100	100	100	99	97	97
# Pre Sys BP <= 165	85	87	89	89	89	92	94	90	88	89	89	89
Pop. Mean	142	143	142	143	142	140	140	141	139	141	141	140
Std. Deviation	18.2	19.1	18.3	17.4	19.8	19.2	18.5	19.3	19.6	19.4	18.7	19.1
% Pre Sys BP <=165	89%	87%	91%	90%	90%	93%	90%	90%	88%	89%	92%	92%



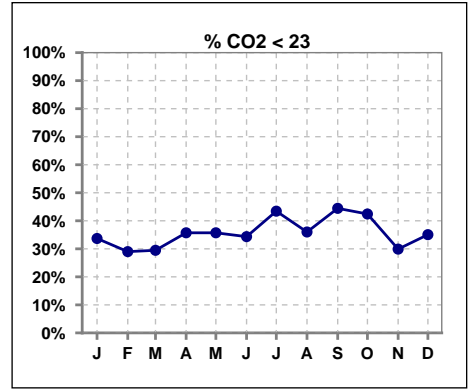
	Jan	Feb	Mar	Apr	May	Jun	Jul	Aug	Sep	Oct	Nov	Dec
# L processed/kg	95	99	96	98	99	99	100	100	100	99	97	97
# L processed/kg>=0.8	80	86	83	82	87	84	89	88	85	84	84	84
Pop. Mean	1	1	1	1	1	1	1	1	1	1	1	1
Std. Deviation	0.3	0.3	0.3	0.3	0.3	0.3	0.3	0.3	0.3	0.3	0.3	0.3
% L processed/kg>=0.8	84%	87%	86%	84%	88%	85%	89%	88%	85%	85%	87%	87%



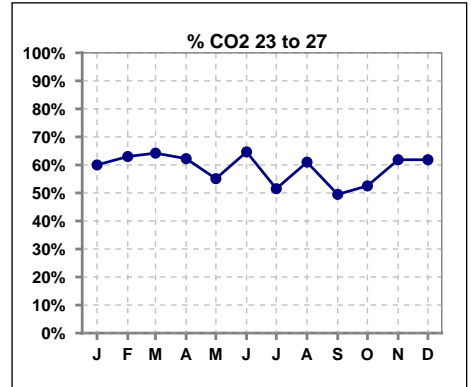
Methodology: a) All labs for 'Adequacy of Dialysis', 'Nutrition', 'Osteodystrophy', 'Anemia' and 'Diabetes' based on last value of month; b) BP's and #L processed are average of all values for month; c) Access data takes last access of month; d) Values for SGA and 'Infection Control' use most recent result.

I. ADEQUACY OF DIALYSIS - CONT.

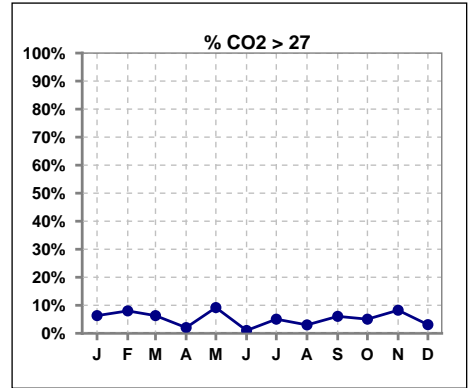
	Jan	Feb	Mar	Apr	May	Jun	Jul	Aug	Sep	Oct	Nov	Dec
# CO2	95	100	95	98	98	99	99	100	99	99	97	97
# CO2 < 23	32	29	28	35	35	34	43	36	44	42	29	34
Pop. Mean	23	24	24	23	24	23	23	23	23	23	24	23
Std. Deviation	2.79	2.57	2.39	2.84	2.72	2.37	2.77	2.63	2.90	2.91	2.68	2.53
% CO2 < 23	34%	29%	29%	36%	36%	34%	43%	36%	44%	42%	30%	35%



	Jan	Feb	Mar	Apr	May	Jun	Jul	Aug	Sep	Oct	Nov	Dec
# CO2	95	100	95	98	98	99	99	100	99	99	97	97
# CO2 23 to 27	57	63	61	61	54	64	51	61	49	52	60	60
Pop. Mean	23	24	24	23	24	23	23	23	23	23	24	23
Std. Deviation	2.79	2.57	2.39	2.84	2.72	2.37	2.77	2.63	2.90	2.91	2.68	2.53
% CO2 23 to 27	60%	63%	64%	62%	55%	65%	52%	61%	49%	53%	62%	62%



	Jan	Feb	Mar	Apr	May	Jun	Jul	Aug	Sep	Oct	Nov	Dec
# CO2	95	100	95	98	98	99	99	100	99	99	97	97
# CO2 > 27	6	8	6	2	9	1	5	3	6	5	8	3
Pop. Mean	23	24	24	23	24	23	23	23	23	23	24	23
Std. Deviation	2.79	2.57	2.39	2.84	2.72	2.37	2.77	2.63	2.90	2.91	2.68	2.53
% CO2 > 27	6%	8%	6%	2%	9%	1%	5%	3%	6%	5%	8%	3%

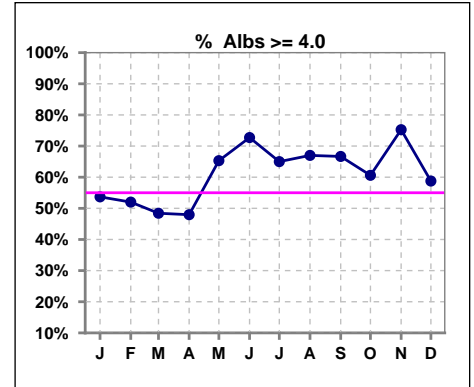


Lake City Kidney Center - Center Hemodialysis
Quality Assurance Reports
 Through period ending Dec. 31, 2023

*Albumin values use BCG method - as of July 2001

II. NUTRITION

	Jan	Feb	Mar	Apr	May	Jun	Jul	Aug	Sep	Oct	Nov	Dec
# Albumin	95	100	95	98	98	99	100	100	99	99	97	97
# Albumin >= 4.0	51	52	46	47	64	72	65	67	66	60	73	57
Pop. Mean	3.9	4.0	4.0	4.0	4.0	4.1	4.0	4.1	4.1	4.0	4.1	4.0
Std. Deviation	0.36	0.38	0.38	0.34	0.36	0.36	0.40	0.39	0.41	0.36	0.39	0.36
% Alb >= 4.0	54%	52%	48%	48%	65%	73%	65%	67%	67%	61%	75%	59%

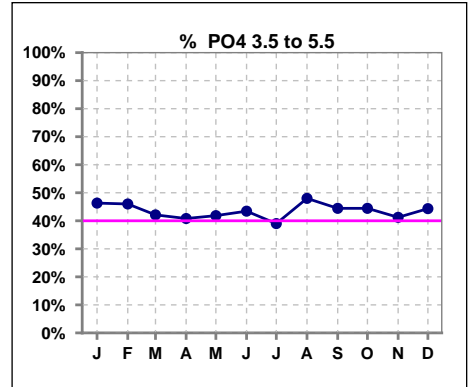


Methodology: a) All labs for 'Adequacy of Dialysis', 'Nutrition', 'Osteodystrophy', 'Anemia' and 'Diabetes' based on last value of month; b) BP's and #L processed are average of all values for month; c) Access data takes last access of month; d) Values for SGA and 'Infection Control' use most recent result.

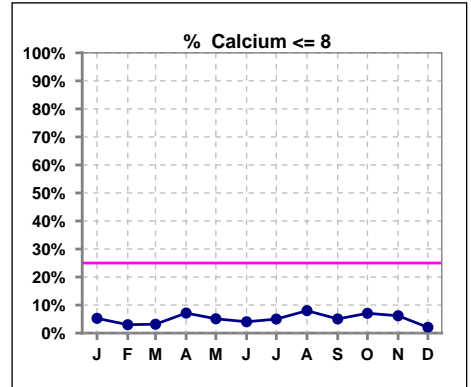
Lab methodology for PTH changed January 2012

III. OSTEODYSTROPHY

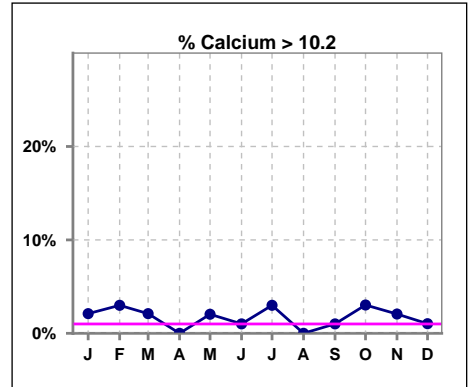
	Jan	Feb	Mar	Apr	May	Jun	Jul	Aug	Sep	Oct	Nov	Dec
# PO4	95	100	95	98	98	99	100	100	99	99	97	97
# PO4 3.5 to 5.5	44	46	40	40	41	43	39	48	44	44	40	43
Pop. Mean	5.9	5.7	5.9	5.9	6.0	5.8	6.1	5.7	5.8	6.1	5.9	5.8
Std. Deviation	2.04	1.58	1.74	1.79	1.83	1.65	1.98	1.70	1.84	2.20	1.85	1.89
% PO4 3.5 to 5.5	46%	46%	42%	41%	42%	43%	39%	48%	44%	44%	41%	44%



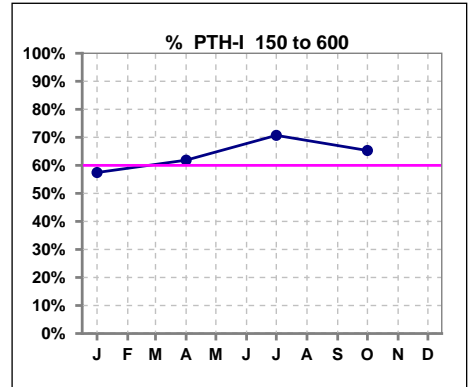
	Jan	Feb	Mar	Apr	May	Jun	Jul	Aug	Sep	Oct	Nov	Dec
# Calcium	95	100	95	98	98	99	100	100	99	99	97	97
# Calcium <= 8	5	3	3	7	5	4	5	8	5	7	6	2
Pop. Mean	9.1	9.2	9.2	9.2	9.2	9.2	9.1	9.1	9.2	9.1	9.2	9.3
Std. Deviation	0.73	0.69	0.64	0.62	0.66	0.63	0.79	0.59	0.63	0.72	0.67	0.55
% Calcium <= 8	5%	3%	3%	7%	5%	4%	5%	8%	5%	7%	6%	2%



	Jan	Feb	Mar	Apr	May	Jun	Jul	Aug	Sep	Oct	Nov	Dec
# Calcium	95	100	95	98	98	99	100	100	99	99	97	97
# Calcium > 10.2	2	3	2	0	2	1	3	0	1	3	2	1
Pop. Mean	9.1	9.2	9.2	9.2	9.2	9.2	9.1	9.1	9.2	9.1	9.2	9.3
Std. Deviation	0.73	0.69	0.64	0.62	0.66	0.63	0.79	0.59	0.63	0.72	0.67	0.55
% Calcium > 10.2	2%	3%	2%	0%	2%	1%	3%	0%	1%	3%	2%	1%



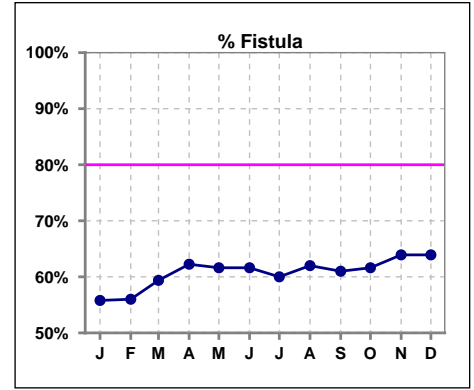
	Jan	Feb	Mar	Apr	May	Jun	Jul	Aug	Sep	Oct	Nov	Dec
# PTH-I	94			97			99			98		
# PTH-I 150 to 600	54			60			70			64		
Pop. Mean	544			517			474			457		
Std. Deviation	455			496			407			358		
% PTH-I 150 to 600	57%			62%			71%			65%		



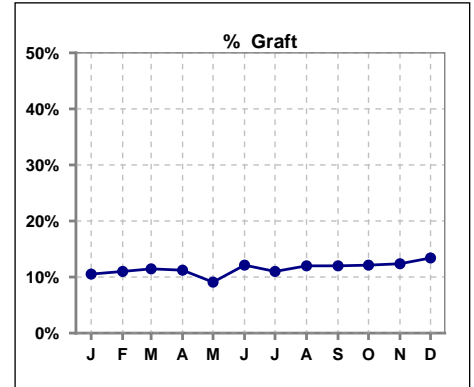
Methodology: a) All labs for 'Adequacy of Dialysis', 'Nutrition', 'Osteodystrophy', 'Anemia' and 'Diabetes' based on last value of month; b) BP's and #L processed are average of all values for month; c) Access data takes last access of month; d) Values for SGA and 'Infection Control' use most recent result.

IV. ACCESS

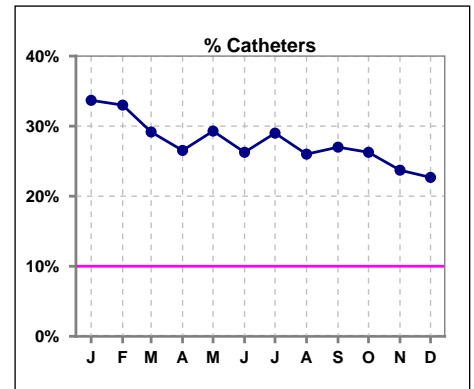
	Jan	Feb	Mar	Apr	May	Jun	Jul	Aug	Sep	Oct	Nov	Dec
# Access	95	100	96	98	99	99	100	100	100	99	97	97
# Fistula	53	56	57	61	61	61	60	62	61	61	62	62
% Fistula	56%	56%	59%	62%	62%	62%	60%	62%	61%	62%	64%	64%



	Jan	Feb	Mar	Apr	May	Jun	Jul	Aug	Sep	Oct	Nov	Dec
# Access	95	100	96	98	99	99	100	100	100	99	97	97
# Graft	10	11	11	11	9	12	11	12	12	12	12	13
% Graft	11%	11%	11%	11%	9%	12%	11%	12%	12%	12%	12%	13%



	Jan	Feb	Mar	Apr	May	Jun	Jul	Aug	Sep	Oct	Nov	Dec
# Access	95	100	96	98	99	99	100	100	100	99	97	97
# Catheters	32	33	28	26	29	26	29	26	27	26	23	22
% Catheters	34%	33%	29%	27%	29%	26%	29%	26%	27%	26%	24%	23%



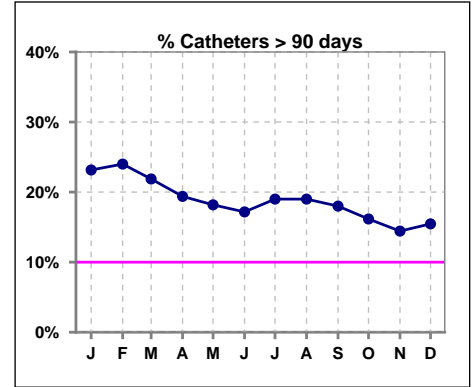
Methodology: a) All labs for 'Adequacy of Dialysis', 'Nutrition', 'Osteodystrophy', 'Anemia' and 'Diabetes' based on last value of month; b) BP's and #L processed are average of all values for month; c) Access data takes last access of month; d) Values for SGA and 'Infection Control' use most recent result.

IV. ACCESS - CONT.

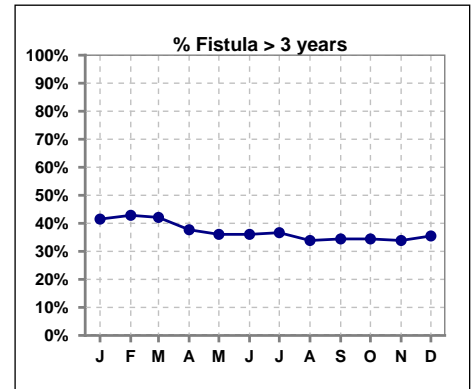
Catheters > 90 days

	Jan	Feb	Mar	Apr	May	Jun	Jul	Aug	Sep	Oct	Nov	Dec
# Access	95	100	96	98	99	99	100	100	100	99	97	97
# Catheters	22	24	21	19	18	17	19	19	18	16	14	15
% Catheters	23%	24%	22%	19%	18%	17%	19%	19%	18%	16%	14%	15%

Definition: Catheter in use on last treatment of the month



	Jan	Feb	Mar	Apr	May	Jun	Jul	Aug	Sep	Oct	Nov	Dec
# Fistula	53	56	57	61	61	61	60	62	61	61	62	62
# Fistula > 3 yrs	22	24	24	23	22	22	22	21	21	21	21	22
% Fistula > 3 yrs	42%	43%	42%	38%	36%	36%	37%	34%	34%	34%	34%	35%

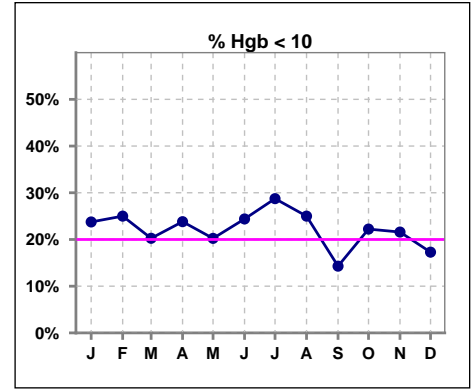


Methodology: a) All labs for 'Adequacy of Dialysis', 'Nutrition', 'Osteodystrophy', 'Anemia' and 'Diabetes' based on last value of month; b) BP's and #L processed are average of all values for month; c) Access data takes last access of month; d) Values for SGA and 'Infection Control' use most recent result.

V. ANEMIA

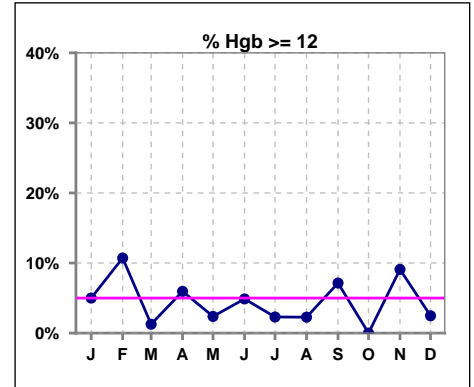
	Jan	Feb	Mar	Apr	May	Jun	Jul	Aug	Sep	Oct	Nov	Dec
# Hgb	80	84	79	84	84	82	87	88	84	90	88	81
# Hgb < 10	19	21	16	20	17	20	25	22	12	20	19	14
Pop. Mean	10.6	10.7	10.7	10.7	10.7	10.6	10.5	10.5	10.9	10.6	10.7	10.6
Std. Deviation	1.1	1.5	1.1	1.1	1.1	1.3	1.0	1.0	1.3	1.0	1.2	1.1
% Hgb < 10	24%	25%	20%	24%	20%	24%	29%	25%	14%	22%	22%	17%

Note: Excludes patients who received no ESA in month.



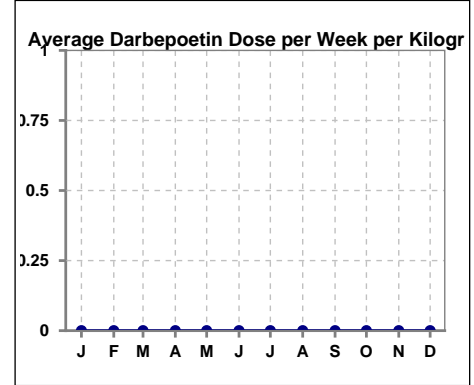
	Jan	Feb	Mar	Apr	May	Jun	Jul	Aug	Sep	Oct	Nov	Dec
# Hgb	80	84	79	84	84	82	87	88	84	90	88	81
# Hgb >= 12	4	9	1	5	2	4	2	2	6	0	8	2
Pop. Mean	10.6	10.7	10.7	10.7	10.7	10.6	10.5	10.5	10.9	10.6	10.7	10.6
Std. Deviation	1.1	1.5	1.1	1.1	1.1	1.3	1.0	1.0	1.3	1.0	1.2	1.1
% Hgb >= 12	5%	11%	1%	6%	2%	5%	2%	2%	7%	0%	9%	2%

Note: Excludes patients who received no ESA in month.



Average Darbepoetin Dose per Week per Kilogram

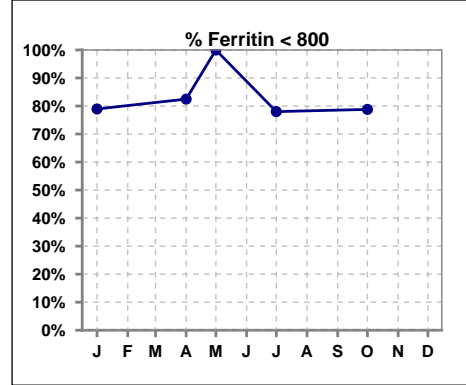
	Jan	Feb	Mar	Apr	May	Jun	Jul	Aug	Sep	Oct	Nov	Dec
# Average Darbepoetin	0	0	0	0	0	0	0	0	0	0	0	0



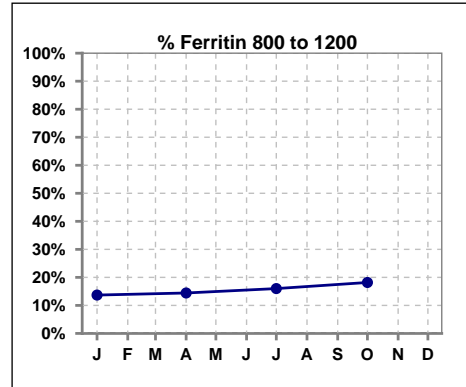
V. ANEMIA - CONT.

Iron Profile

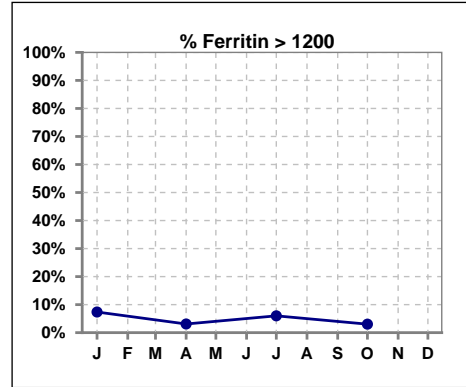
	Jan	Feb	Mar	Apr	May	Jun	Jul	Aug	Sep	Oct	Nov	Dec
# Ferritin	95			97	8		100			99		
# Ferritin < 800	75			80	8		78			78		
Pop. Mean	529			486	288		526			537		
Std. Deviation	394			320	240		340			323		
% Ferritin < 800	79%			82%	100%		78%			79%		



	Jan	Feb	Mar	Apr	May	Jun	Jul	Aug	Sep	Oct	Nov	Dec
# Ferritin	95			97	8		100			99		
# Ferritin 800 to 1200	13			14			16			18		
Pop. Mean	529			486	288		526			537		
Std. Deviation	394			320	240		340			323		
% Ferritin 800 to 1200	14%			14%			16%			18%		

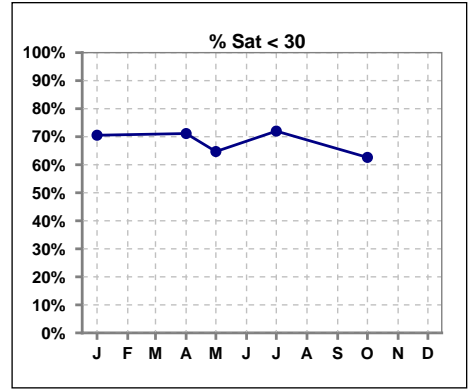


	Jan	Feb	Mar	Apr	May	Jun	Jul	Aug	Sep	Oct	Nov	Dec
# Ferritin	95			97	8		100			99		
# Ferritin > 1200	7			3			6			3		
Pop. Mean	529			486	288		526			537		
Std. Deviation	394			320	240		340			323		
% Ferritin > 1200	7%			3%			6%			3%		

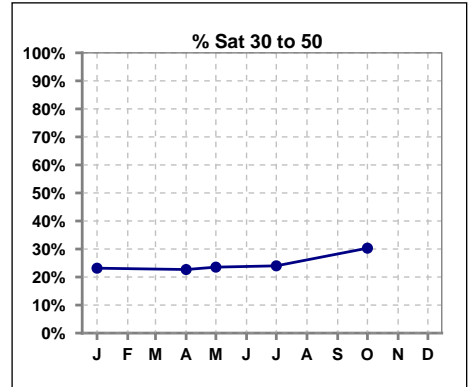


V. ANEMIA - CONT.

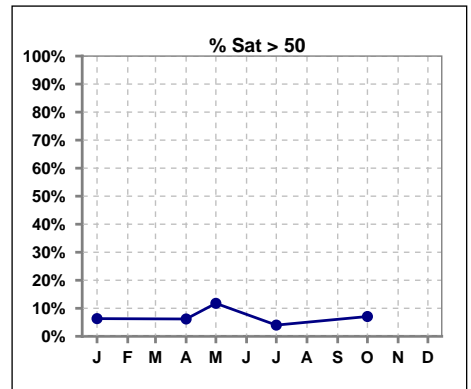
	Jan	Feb	Mar	Apr	May	Jun	Jul	Aug	Sep	Oct	Nov	Dec
# % Sat	95			97	17		100			99		
# % Sat < 30	67			69	11		72			62		
Pop. Mean	26			27	26		27			29		
Std. Deviation	16			15	16		15			16		
% % Sat < 30	71%			71%	65%		72%			63%		



	Jan	Feb	Mar	Apr	May	Jun	Jul	Aug	Sep	Oct	Nov	Dec
# % Sat	95			97	17		100			99		
# % Sat 30 to 50	22			22	4		24			30		
Pop. Mean	26			27	26		27			29		
Std. Deviation	16			15	16		15			16		
% % Sat 30 to 50	23%			23%	24%		24%			30%		



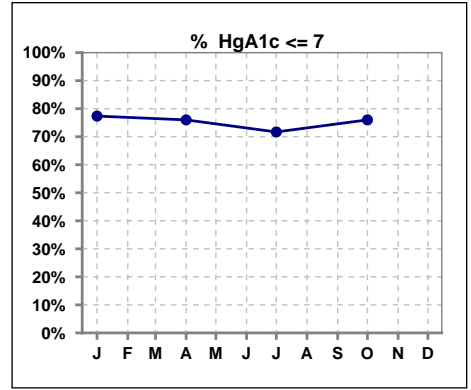
	Jan	Feb	Mar	Apr	May	Jun	Jul	Aug	Sep	Oct	Nov	Dec
# % Sat	95			97	17		100			99		
# % Sat > 50	6			6	2		4			7		
Pop. Mean	26			27	26		27			29		
Std. Deviation	16			15	16		15			16		
% % Sat > 50	6%			6%	12%		4%			7%		



Methodology: a) All labs for 'Adequacy of Dialysis', 'Nutrition', 'Osteodystrophy', 'Anemia' and 'Diabetes' based on last value of month; b) BP's and #L processed are average of all values for month; c) Access data takes last access of month; d) Values for SGA and 'Infection Control' use most recent result.

VI. Diabetes

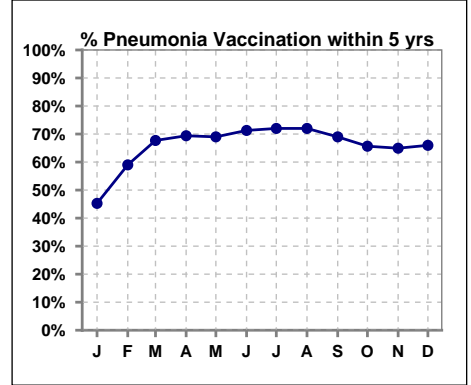
	Jan	Feb	Mar	Apr	May	Jun	Jul	Aug	Sep	Oct	Nov	Dec
# HgA1c	53			50			53			50		
# HgA1c <= 7	41			38			38			38		
Pop. Mean	6.1			6.2			6.2			6.1		
Std. Deviation	1.42			1.39			1.25			1.26		
% HgA1c <= 7	77%			76%			72%			76%		



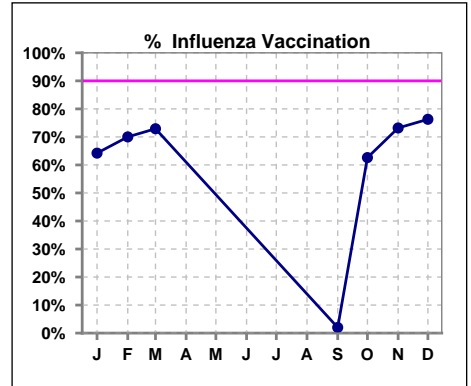
VII. Infection Control

Pneumonia vaccination within the past five years

	Jan	Feb	Mar	Apr	May	Jun	Jul	Aug	Sep	Oct	Nov	Dec
# Patient	95	100	96	98	100	101	100	100	100	99	97	97
# Pneumonia	43	59	65	68	69	72	72	72	69	65	63	64
% Pneumonia	45%	59%	68%	69%	69%	71%	72%	72%	69%	66%	65%	66%



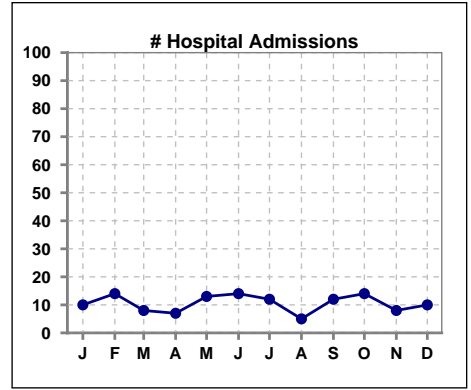
	Jan	Feb	Mar	Apr	May	Jun	Jul	Aug	Sep	Oct	Nov	Dec
# Patient	95	100	96						100	99	97	97
# Influenza	61	70	70						2	62	71	74
% Influenza	64%	70%	73%						2%	63%	73%	76%



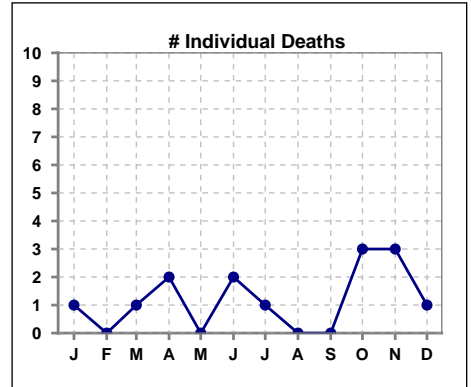
Methodology: a) All labs for 'Adequacy of Dialysis', 'Nutrition', 'Osteodystrophy', 'Anemia' and 'Diabetes' based on last value of month; b) BP's and #L processed are average of all values for month; c) Access data takes last access of month; d) Values for SGA and 'Infection Control' use most recent result.

VIII. Outcome measures

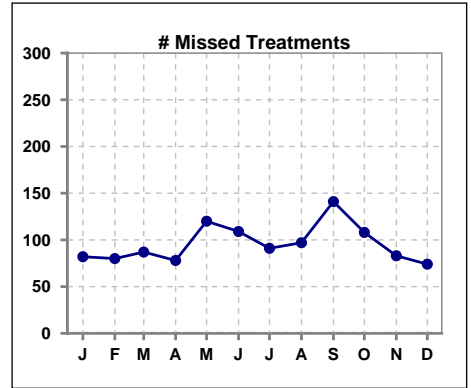
	Jan	Feb	Mar	Apr	May	Jun	Jul	Aug	Sep	Oct	Nov	Dec
# Patient	95	100	96	98	100	101	100	100	100	99	97	97
# Hospital Admissions	10	14	8	7	13	14	12	5	12	14	8	10



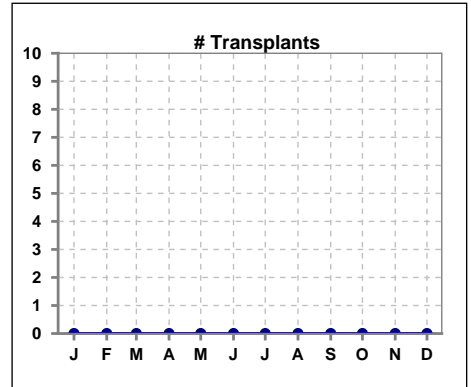
	Jan	Feb	Mar	Apr	May	Jun	Jul	Aug	Sep	Oct	Nov	Dec
# Patient	95	100	96	98	100	101	100	100	100	99	97	97
# Individual Deaths	1	0	1	2	0	2	1	0	0	3	3	1



	Jan	Feb	Mar	Apr	May	Jun	Jul	Aug	Sep	Oct	Nov	Dec
# Patient	95	100	96	98	100	101	100	100	100	99	97	97
# Missed Treatments	82	80	87	78	120	109	91	97	141	108	83	74



	Jan	Feb	Mar	Apr	May	Jun	Jul	Aug	Sep	Oct	Nov	Dec
# Patient	95	100	96	98	100	101	100	100	100	99	97	97
# Transplants	0	0	0	0	0	0	0	0	0	0	0	0



Methodology: a) All labs for 'Adequacy of Dialysis', 'Nutrition', 'Osteodystrophy', 'Anemia' and 'Diabetes' based on last value of month; b) BP's and #L processed are average of all values for month; c) Access data takes last access of month; d) Values for SGA and 'Infection Control' use most recent result.