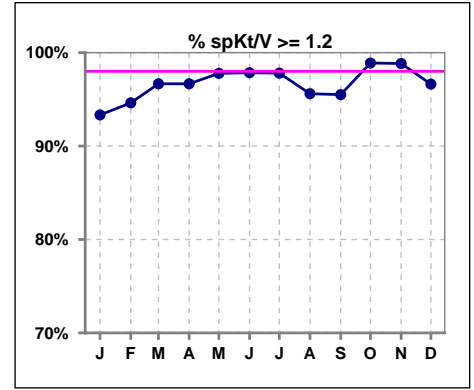
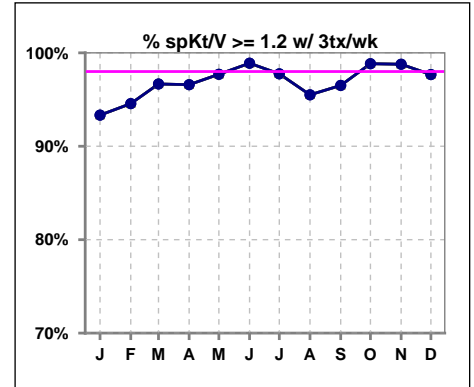


I. ADEQUACY OF DIALYSIS

	Jan	Feb	Mar	Apr	May	Jun	Jul	Aug	Sep	Oct	Nov	Dec
# spKt/V	90	93	90	90	90	93	91	91	89	90	86	89
# spKt/V >= 1.2	84	88	87	87	88	91	89	87	85	89	85	86
Pop. Mean	1.57	1.60	1.59	1.62	1.63	1.64	1.61	1.60	1.64	1.64	1.64	1.60
Std. Deviation	0.34	0.33	0.28	0.32	0.31	0.33	0.28	0.29	0.32	0.28	0.28	0.33
% spKt/V >= 1.2	93%	95%	97%	97%	98%	98%	98%	96%	96%	99%	99%	97%

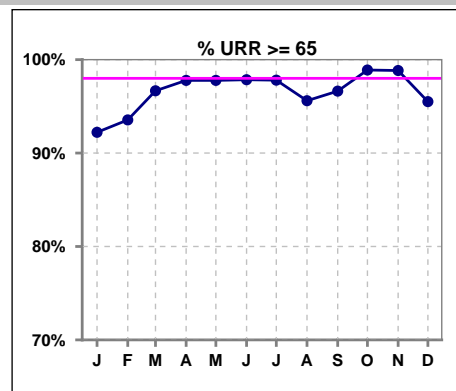


	Jan	Feb	Mar	Apr	May	Jun	Jul	Aug	Sep	Oct	Nov	Dec
# spKt/V w/ 3tx/wk	90	92	90	88	87	90	89	89	86	86	82	86
# spKt/V >= 1.2 w/3tx/wk	84	87	87	85	85	89	87	85	83	85	81	84
Pop. Mean	1.57	1.60	1.59	1.61	1.62	1.64	1.61	1.59	1.64	1.63	1.65	1.61
Std. Deviation	0.34	0.33	0.28	0.32	0.32	0.32	0.28	0.29	0.31	0.28	0.28	0.32
% >= 1.2 w/3tx/wk	93%	95%	97%	97%	98%	99%	98%	96%	97%	99%	99%	98%

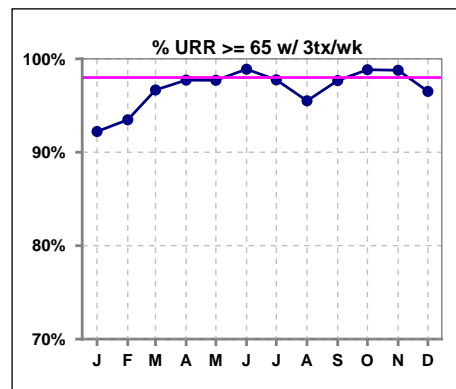


I. ADEQUACY OF DIALYSIS - CONT.

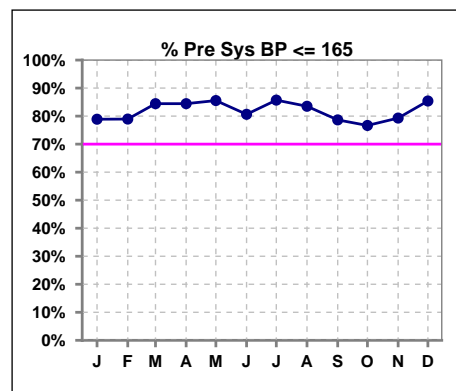
	Jan	Feb	Mar	Apr	May	Jun	Jul	Aug	Sep	Oct	Nov	Dec
# URR	90	93	90	90	90	93	91	91	89	90	86	89
# URR >= 65	83	87	87	88	88	91	89	87	86	89	85	85
Pop. Mean	73	74	74	75	75	75	75	75	75	75	76	74
Std. Deviation	7.19	6.35	5.63	6.10	6.11	6.20	5.80	6.03	6.38	5.32	5.03	6.83
% URR >= 65	92%	94%	97%	98%	98%	98%	98%	96%	97%	99%	99%	96%



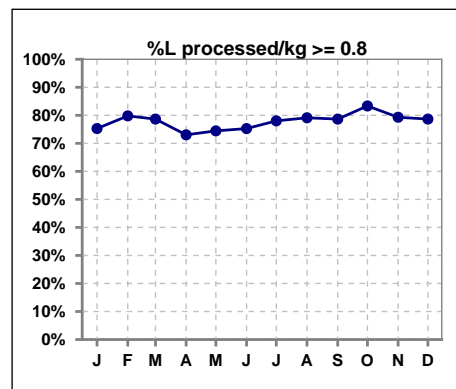
	Jan	Feb	Mar	Apr	May	Jun	Jul	Aug	Sep	Oct	Nov	Dec
# URR w/ 3tx/wk	90	92	90	88	87	90	89	89	86	86	82	86
# URR>=65 w/ 3tx/wk	83	86	87	86	85	89	87	85	84	85	81	83
Pop. Mean	73	74	74	75	75	75	75	74	75	75	76	74
Std. Deviation	7.19	6.37	5.63	6.02	6.12	5.96	5.84	6.06	5.88	5.30	5.09	6.51
% URR>=65 w/ 3tx/wk	92%	93%	97%	98%	98%	99%	98%	96%	98%	99%	99%	97%



	Jan	Feb	Mar	Apr	May	Jun	Jul	Aug	Sep	Oct	Nov	Dec
# Pre Sys BP	90	95	90	90	90	93	91	91	89	90	87	89
# Pre Sys BP <= 165	74	76	76	76	77	77	78	76	71	71	71	76
Pop. Mean	149	149	146	147	145	147	145	146	148	148	147	146
Std. Deviation	17.8	19.5	18.5	19.3	18.7	18.8	17.6	18.8	18.7	19.4	18.1	17.1
% Pre Sys BP <=165	79%	79%	84%	84%	86%	81%	86%	84%	79%	77%	79%	85%



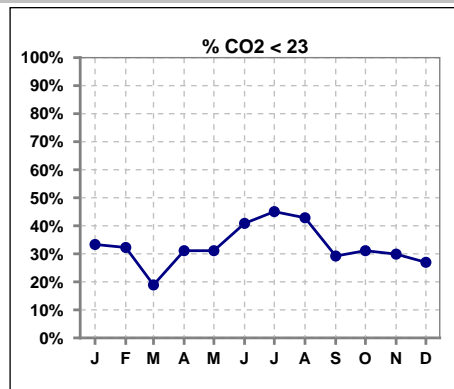
	Jan	Feb	Mar	Apr	May	Jun	Jul	Aug	Sep	Oct	Nov	Dec
# L processed/kg	89	94	89	89	90	93	91	91	89	90	87	89
# L processed/kg>=0.8	67	75	70	65	67	70	71	72	70	75	69	70
Pop. Mean	1	1	1	1	1	1	1	1	1	1	1	1
Std. Deviation	0.3	0.2	0.2	0.2	0.3	0.2	0.2	0.2	0.2	0.2	0.3	0.3
% L processed/kg>=0.8	75%	80%	79%	73%	74%	75%	78%	79%	79%	83%	79%	79%



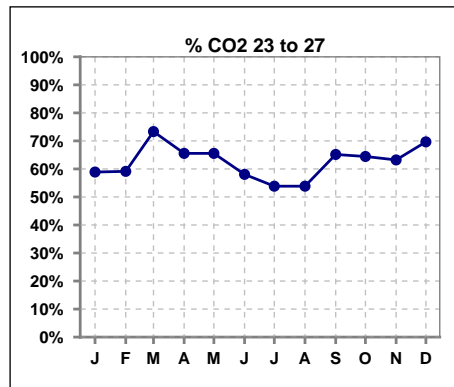
Methodology: a) All labs for 'Adequacy of Dialysis', 'Nutrition', 'Osteodystrophy', 'Anemia' and 'Diabetes' based on last value of month; b) BP's and #L processed are average of all values for month; c) Access data takes last access of month; d) Values for SGA and 'Infection Control' use most recent result.

I. ADEQUACY OF DIALYSIS - CONT.

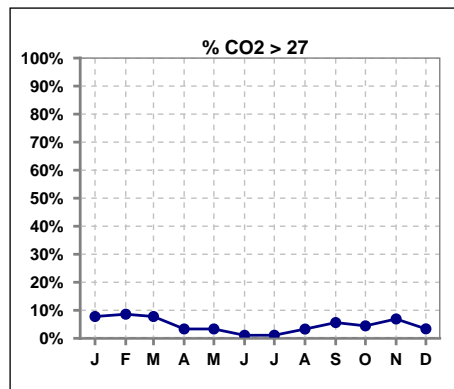
	Jan	Feb	Mar	Apr	May	Jun	Jul	Aug	Sep	Oct	Nov	Dec
# CO2	90	93	90	90	90	93	91	91	89	90	87	89
# CO2 < 23	30	30	17	28	28	38	41	39	26	28	26	24
Pop. Mean	23	24	24	23	23	23	23	23	23	24	24	24
Std. Deviation	2.60	2.77	2.49	2.22	2.11	2.49	2.48	2.76	2.86	2.32	2.55	2.69
% CO2 < 23	33%	32%	19%	31%	31%	41%	45%	43%	29%	31%	30%	27%



	Jan	Feb	Mar	Apr	May	Jun	Jul	Aug	Sep	Oct	Nov	Dec
# CO2	90	93	90	90	90	93	91	91	89	90	87	89
# CO2 23 to 27	53	55	66	59	59	54	49	49	58	58	55	62
Pop. Mean	23	24	24	23	23	23	23	23	23	24	24	24
Std. Deviation	2.60	2.77	2.49	2.22	2.11	2.49	2.48	2.76	2.86	2.32	2.55	2.69
% CO2 23 to 27	59%	59%	73%	66%	66%	58%	54%	54%	65%	64%	63%	70%



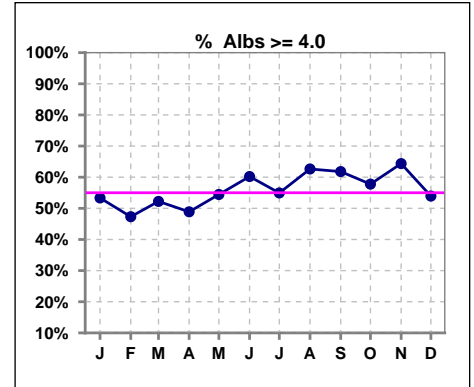
	Jan	Feb	Mar	Apr	May	Jun	Jul	Aug	Sep	Oct	Nov	Dec
# CO2	90	93	90	90	90	93	91	91	89	90	87	89
# CO2 > 27	7	8	7	3	3	1	1	3	5	4	6	3
Pop. Mean	23	24	24	23	23	23	23	23	23	24	24	24
Std. Deviation	2.60	2.77	2.49	2.22	2.11	2.49	2.48	2.76	2.86	2.32	2.55	2.69
% CO2 > 27	8%	9%	8%	3%	3%	1%	1%	3%	6%	4%	7%	3%



*Albumin values use BCG method - as of July 2001

II. NUTRITION

	Jan	Feb	Mar	Apr	May	Jun	Jul	Aug	Sep	Oct	Nov	Dec
# Albumin	90	93	90	90	90	93	91	91	89	90	87	89
# Albumin >= 4.0	48	44	47	44	49	56	50	57	55	52	56	48
Pop. Mean	3.9	3.9	3.9	3.9	3.9	4.0	3.9	3.9	4.0	3.9	4.0	3.9
Std. Deviation	0.43	0.45	0.42	0.37	0.39	0.38	0.41	0.40	0.40	0.47	0.48	0.46
% Alb >= 4.0	53%	47%	52%	49%	54%	60%	55%	63%	62%	58%	64%	54%

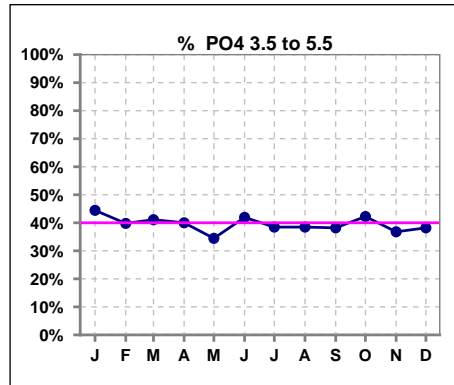


Methodology: a) All labs for 'Adequacy of Dialysis', 'Nutrition', 'Osteodystrophy', 'Anemia' and 'Diabetes' based on last value of month; b) BP's and #L processed are average of all values for month; c) Access data takes last access of month; d) Values for SGA and 'Infection Control' use most recent result.

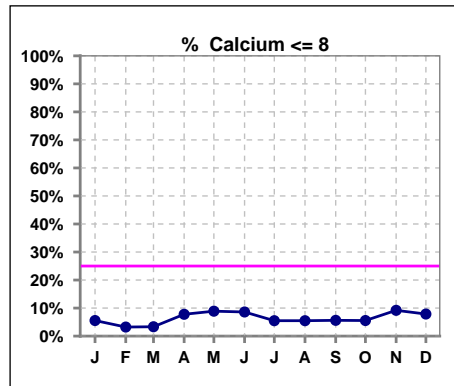
Lab methodology for PTH changed January 2012

III. OSTEODYSTROPHY

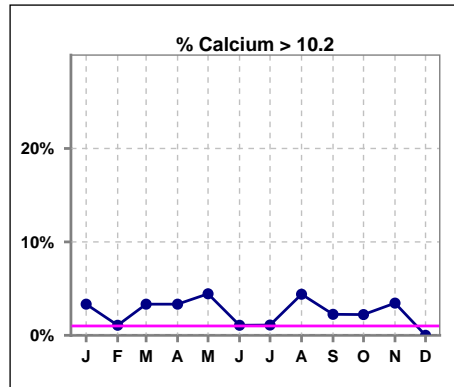
	Jan	Feb	Mar	Apr	May	Jun	Jul	Aug	Sep	Oct	Nov	Dec
# PO4	90	93	90	90	90	93	91	91	89	90	87	89
# PO4 3.5 to 5.5	40	37	37	36	31	39	35	35	34	38	32	34
Pop. Mean	6.0	5.8	5.9	5.8	5.9	5.9	6.1	6.1	5.9	5.8	6.0	5.7
Std. Deviation	1.83	1.81	2.05	1.83	1.79	1.83	1.80	2.11	2.03	1.95	2.15	2.08
% PO4 3.5 to 5.5	44%	40%	41%	40%	34%	42%	38%	38%	38%	42%	37%	38%



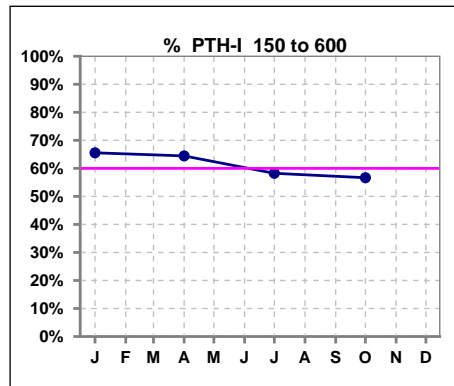
	Jan	Feb	Mar	Apr	May	Jun	Jul	Aug	Sep	Oct	Nov	Dec
# Calcium	90	93	90	90	90	93	91	91	89	90	87	89
# Calcium <= 8	5	3	3	7	8	8	5	5	5	5	8	7
Pop. Mean	9.1	9.1	9.1	9.1	9.0	9.0	9.0	9.2	9.2	9.2	9.1	9.0
Std. Deviation	0.64	0.68	0.63	0.70	0.75	0.71	0.69	0.73	0.65	0.68	0.75	0.63
% Calcium <= 8	6%	3%	3%	8%	9%	9%	5%	5%	6%	6%	9%	8%



	Jan	Feb	Mar	Apr	May	Jun	Jul	Aug	Sep	Oct	Nov	Dec
# Calcium	90	93	90	90	90	93	91	91	89	90	87	89
# Calcium > 10.2	3	1	3	3	4	1	1	4	2	2	3	0
Pop. Mean	9.1	9.1	9.1	9.1	9.0	9.0	9.0	9.2	9.2	9.2	9.1	9.0
Std. Deviation	0.64	0.68	0.63	0.70	0.75	0.71	0.69	0.73	0.65	0.68	0.75	0.63
% Calcium > 10.2	3%	1%	3%	3%	4%	1%	1%	4%	2%	2%	3%	0%



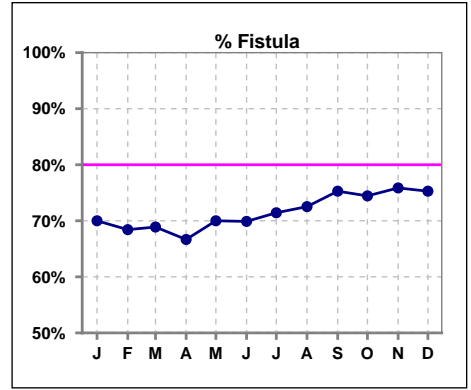
	Jan	Feb	Mar	Apr	May	Jun	Jul	Aug	Sep	Oct	Nov	Dec
# PTH-I	90			90			91			90		
# PTH-I 150 to 600	59			58			53			51		
Pop. Mean	495			505			532			505		
Std. Deviation	303			418			397			345		
% PTH-I 150 to 600	66%			64%			58%			57%		



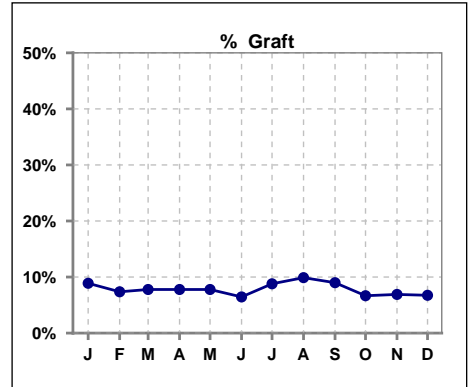
Methodology: a) All labs for 'Adequacy of Dialysis', 'Nutrition', 'Osteodystrophy', 'Anemia' and 'Diabetes' based on last value of month; b) BP's and #L processed are average of all values for month; c) Access data takes last access of month; d) Values for SGA and 'Infection Control' use most recent result.

IV. ACCESS

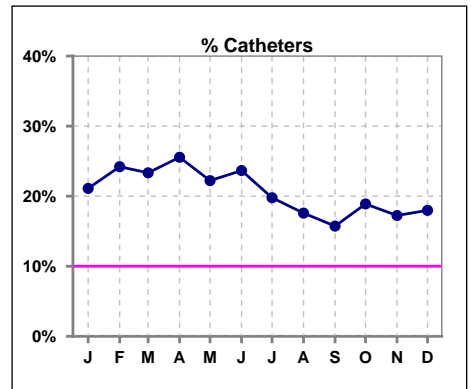
	Jan	Feb	Mar	Apr	May	Jun	Jul	Aug	Sep	Oct	Nov	Dec
# Access	90	95	90	90	90	93	91	91	89	90	87	89
# Fistula	63	65	62	60	63	65	65	66	67	67	66	67
% Fistula	70%	68%	69%	67%	70%	70%	71%	73%	75%	74%	76%	75%



	Jan	Feb	Mar	Apr	May	Jun	Jul	Aug	Sep	Oct	Nov	Dec
# Access	90	95	90	90	90	93	91	91	89	90	87	89
# Graft	8	7	7	7	7	6	8	9	8	6	6	6
% Graft	9%	7%	8%	8%	8%	6%	9%	10%	9%	7%	7%	7%



	Jan	Feb	Mar	Apr	May	Jun	Jul	Aug	Sep	Oct	Nov	Dec
# Access	90	95	90	90	90	93	91	91	89	90	87	89
# Catheters	19	23	21	23	20	22	18	16	14	17	15	16
% Catheters	21%	24%	23%	26%	22%	24%	20%	18%	16%	19%	17%	18%



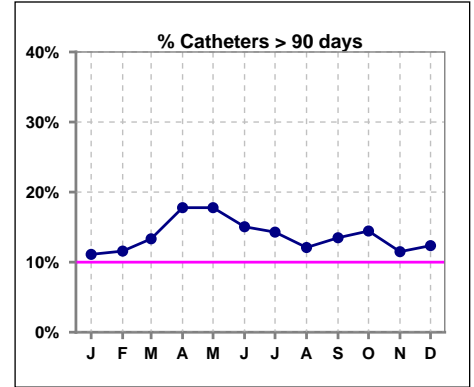
Methodology: a) All labs for 'Adequacy of Dialysis', 'Nutrition', 'Osteodystrophy', 'Anemia' and 'Diabetes' based on last value of month; b) BP's and #L processed are average of all values for month; c) Access data takes last access of month; d) Values for SGA and 'Infection Control' use most recent result.

IV. ACCESS - CONT.

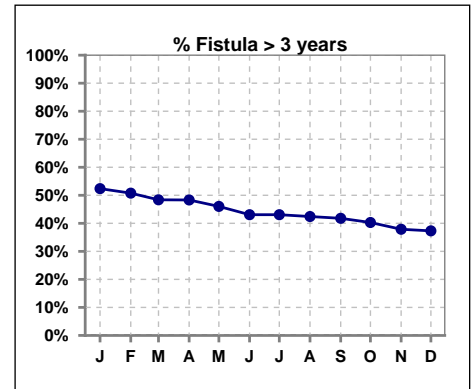
Catheters > 90 days

	Jan	Feb	Mar	Apr	May	Jun	Jul	Aug	Sep	Oct	Nov	Dec
# Access	90	95	90	90	90	93	91	91	89	90	87	89
# Catheters	10	11	12	16	16	14	13	11	12	13	10	11
% Catheters	11%	12%	13%	18%	18%	15%	14%	12%	13%	14%	11%	12%

Definition: Catheter in use on last treatment of the month



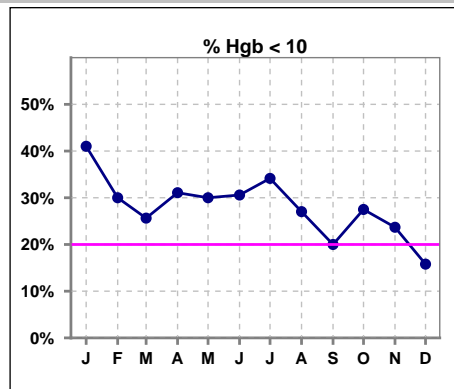
	Jan	Feb	Mar	Apr	May	Jun	Jul	Aug	Sep	Oct	Nov	Dec
# Fistula	63	65	62	60	63	65	65	66	67	67	66	67
# Fistula > 3 yrs	33	33	30	29	29	28	28	28	28	27	25	25
% Fistula > 3 yrs	52%	51%	48%	48%	46%	43%	43%	42%	42%	40%	38%	37%



V. ANEMIA

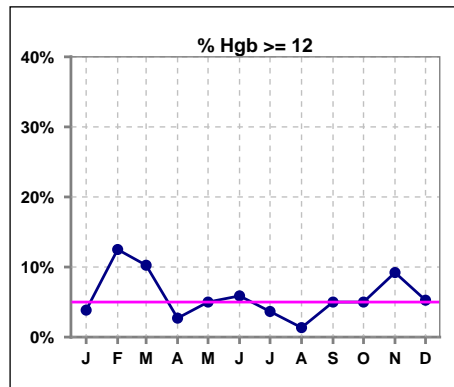
	Jan	Feb	Mar	Apr	May	Jun	Jul	Aug	Sep	Oct	Nov	Dec
# Hgb	78	80	78	74	80	85	82	74	80	80	76	76
# Hgb < 10	32	24	20	23	24	26	28	20	16	22	18	12
Pop. Mean	10.1	10.5	10.6	10.2	10.4	10.2	10.3	10.5	10.6	10.4	10.5	10.6
Std. Deviation	1.3	1.5	1.4	1.2	1.3	1.4	1.3	1.2	1.1	1.3	1.4	1.3
% Hgb < 10	41%	30%	26%	31%	30%	31%	34%	27%	20%	28%	24%	16%

Note: Excludes patients who received no ESA in month.



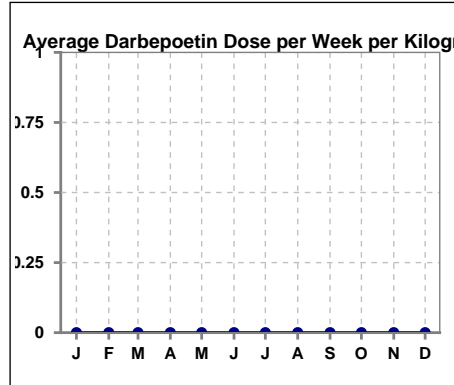
	Jan	Feb	Mar	Apr	May	Jun	Jul	Aug	Sep	Oct	Nov	Dec
# Hgb	78	80	78	74	80	85	82	74	80	80	76	76
# Hgb >= 12	3	10	8	2	4	5	3	1	4	4	7	4
Pop. Mean	10.1	10.5	10.6	10.2	10.4	10.2	10.3	10.5	10.6	10.4	10.5	10.6
Std. Deviation	1.3	1.5	1.4	1.2	1.3	1.4	1.3	1.2	1.1	1.3	1.4	1.3
% Hgb >= 12	4%	13%	10%	3%	5%	6%	4%	1%	5%	5%	9%	5%

Note: Excludes patients who received no ESA in month.



Average Darbepoetin Dose per Week per Kilogram

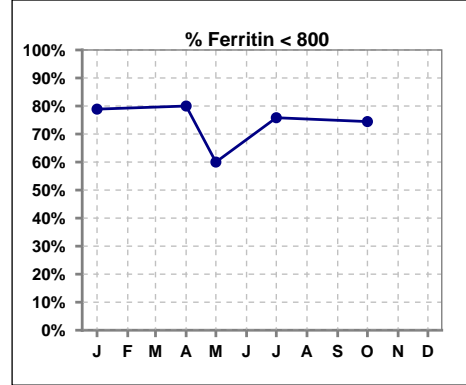
	Jan	Feb	Mar	Apr	May	Jun	Jul	Aug	Sep	Oct	Nov	Dec
# Average Darbepoetin	0	0	0	0	0	0	0	0	0	0	0	0



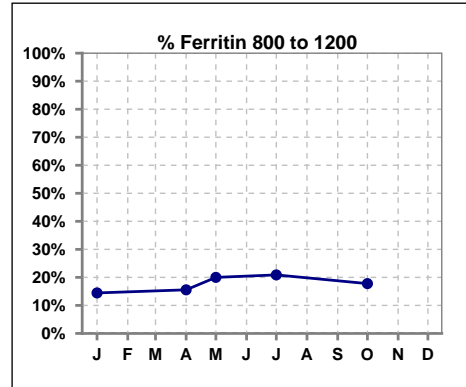
V. ANEMIA - CONT.

Iron Profile

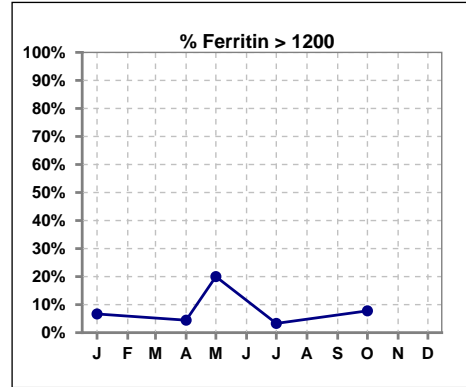
	Jan	Feb	Mar	Apr	May	Jun	Jul	Aug	Sep	Oct	Nov	Dec
# Ferritin	90			90	5		91			90		
# Ferritin < 800	71			72	3		69			67		
Pop. Mean	561			518	677		544			571		
Std. Deviation	378			358	476		353			386		
% Ferritin < 800	79%			80%	60%		76%			74%		



	Jan	Feb	Mar	Apr	May	Jun	Jul	Aug	Sep	Oct	Nov	Dec
# Ferritin	90			90	5		91			90		
# Ferritin 800 to 1200	13			14	1		19			16		
Pop. Mean	561			518	677		544			571		
Std. Deviation	378			358	476		353			386		
% Ferritin 800 to 1200	14%			16%	20%		21%			18%		

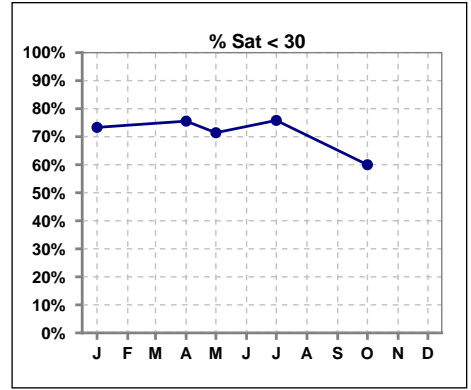


	Jan	Feb	Mar	Apr	May	Jun	Jul	Aug	Sep	Oct	Nov	Dec
# Ferritin	90			90	5		91			90		
# Ferritin > 1200	6			4	1		3			7		
Pop. Mean	561			518	677		544			571		
Std. Deviation	378			358	476		353			386		
% Ferritin > 1200	7%			4%	20%		3%			8%		

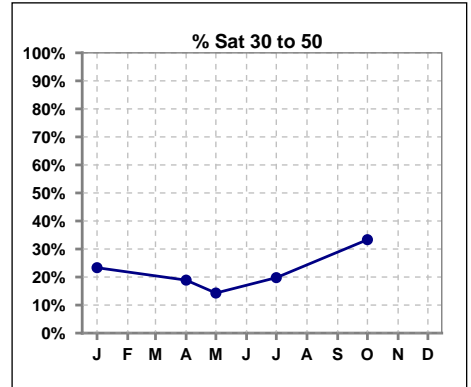


V. ANEMIA - CONT.

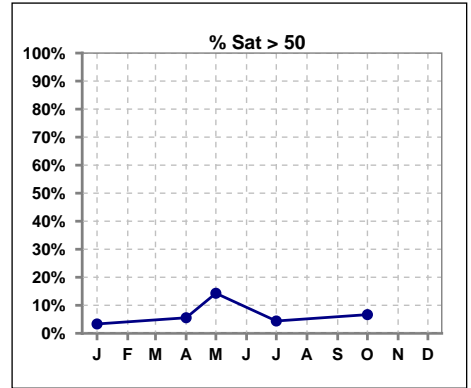
	Jan	Feb	Mar	Apr	May	Jun	Jul	Aug	Sep	Oct	Nov	Dec
# % Sat	90			90	7		91			90		
# % Sat < 30	66			68	5		69			54		
Pop. Mean	25			23	27		24			29		
Std. Deviation	12			14	24		14			15		
% % Sat < 30	73%			76%	71%		76%			60%		



	Jan	Feb	Mar	Apr	May	Jun	Jul	Aug	Sep	Oct	Nov	Dec
# % Sat	90			90	7		91			90		
# % Sat 30 to 50	21			17	1		18			30		
Pop. Mean	25			23	27		24			29		
Std. Deviation	12			14	24		14			15		
% % Sat 30 to 50	23%			19%	14%		20%			33%		

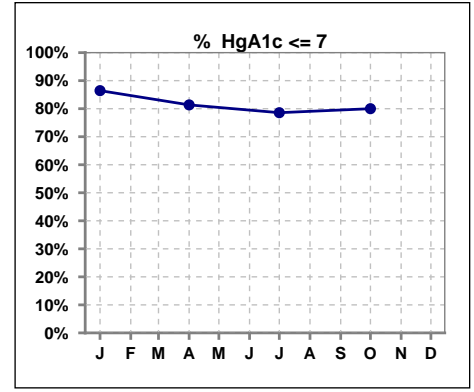


	Jan	Feb	Mar	Apr	May	Jun	Jul	Aug	Sep	Oct	Nov	Dec
# % Sat	90			90	7		91			90		
# % Sat > 50	3			5	1		4			6		
Pop. Mean	25			23	27		24			29		
Std. Deviation	12			14	24		14			15		
% % Sat > 50	3%			6%	14%		4%			7%		



VI. Diabetes

	Jan	Feb	Mar	Apr	May	Jun	Jul	Aug	Sep	Oct	Nov	Dec
# HgA1c	59			59			56			55		
# HgA1c <= 7	51			48			44			44		
Pop. Mean	6.0			6.0			6.1			5.9		
Std. Deviation	1.43			1.32			1.14			1.44		
% HgA1c <= 7	86%			81%			79%			80%		

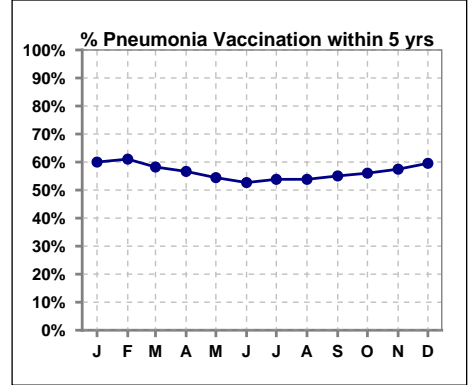


Methodology: a) All labs for 'Adequacy of Dialysis', 'Nutrition', 'Osteodystrophy', 'Anemia' and 'Diabetes' based on last value of month; b) BP's and #L processed are average of all values for month; c) Access data takes last access of month; d) Values for SGA and 'Infection Control' use most recent result.

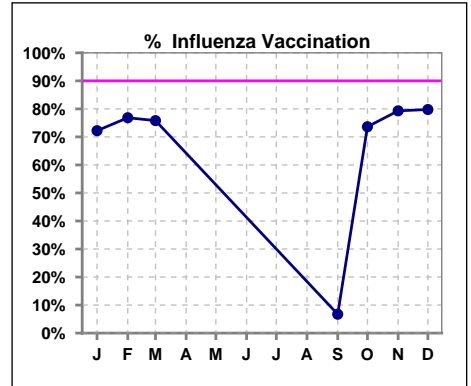
VII. Infection Control

Pneumonia vaccination within the past five years

	Jan	Feb	Mar	Apr	May	Jun	Jul	Aug	Sep	Oct	Nov	Dec
# Patient	90	95	91	90	90	93	91	91	89	91	87	89
# Pneumonia	54	58	53	51	49	49	49	49	49	51	50	53
% Pneumonia	60%	61%	58%	57%	54%	53%	54%	54%	55%	56%	57%	60%



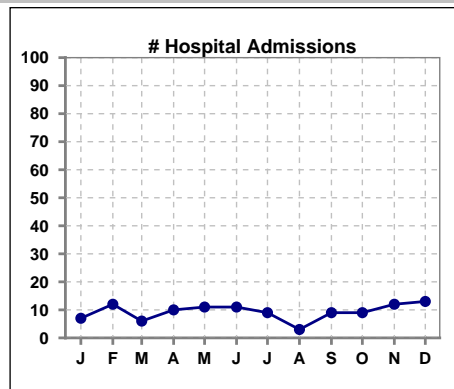
	Jan	Feb	Mar	Apr	May	Jun	Jul	Aug	Sep	Oct	Nov	Dec
# Patient	90	95	91						89	91	87	89
# Influenza	65	73	69						6	67	69	71
% Influenza	72%	77%	76%						7%	74%	79%	80%



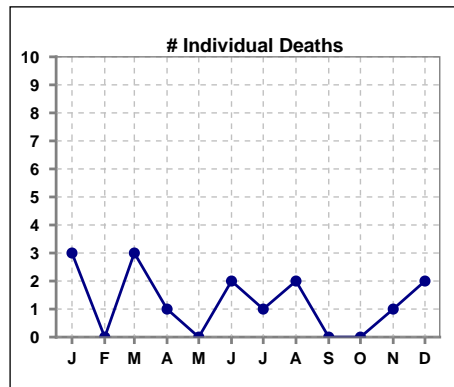
Methodology: a) All labs for 'Adequacy of Dialysis', 'Nutrition', 'Osteodystrophy', 'Anemia' and 'Diabetes' based on last value of month; b) BP's and #L processed are average of all values for month; c) Access data takes last access of month; d) Values for SGA and 'Infection Control' use most recent result.

VIII. Outcome measures

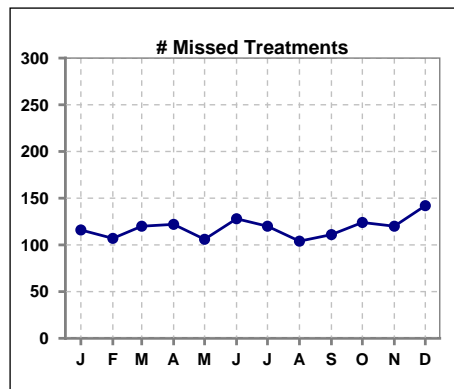
	Jan	Feb	Mar	Apr	May	Jun	Jul	Aug	Sep	Oct	Nov	Dec
# Patient	90	95	91	90	90	93	91	91	89	91	87	89
# Hospital Admissions	7	12	6	10	11	11	9	3	9	9	12	13



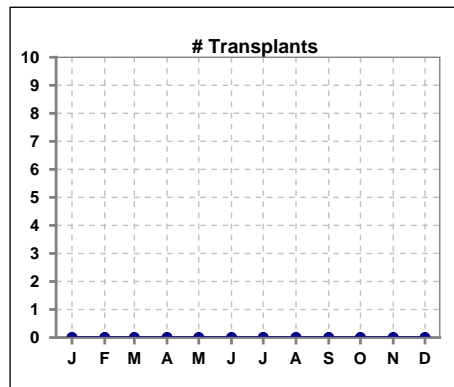
	Jan	Feb	Mar	Apr	May	Jun	Jul	Aug	Sep	Oct	Nov	Dec
# Patient	90	95	91	90	90	93	91	91	89	91	87	89
# Individual Deaths	3	0	3	1	0	2	1	2	0	0	1	2



	Jan	Feb	Mar	Apr	May	Jun	Jul	Aug	Sep	Oct	Nov	Dec
# Patient	90	95	91	90	90	93	91	91	89	91	87	89
# Missed Treatments	116	107	120	122	106	128	120	104	111	124	120	142



	Jan	Feb	Mar	Apr	May	Jun	Jul	Aug	Sep	Oct	Nov	Dec
# Patient	90	95	91	90	90	93	91	91	89	91	87	89
# Transplants	0	0	0	0	0	0	0	0	0	0	0	0



Methodology: a) All labs for 'Adequacy of Dialysis', 'Nutrition', 'Osteodystrophy', 'Anemia' and 'Diabetes' based on last value of month; b) BP's and #L processed are average of all values for month; c) Access data takes last access of month; d) Values for SGA and 'Infection Control' use most recent result.