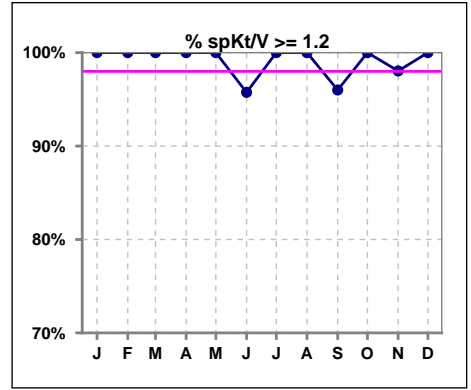
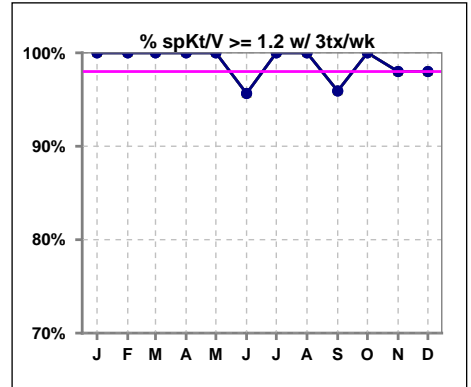


I. ADEQUACY OF DIALYSIS

	Jan	Feb	Mar	Apr	May	Jun	Jul	Aug	Sep	Oct	Nov	Dec
# spKt/V	47	46	48	45	49	47	51	48	50	49	51	53
# spKt/V >= 1.2	47	46	48	45	49	45	51	48	48	49	50	53
Pop. Mean	1.61	1.60	1.57	1.62	1.54	1.53	1.56	1.58	1.57	1.62	1.60	1.59
Std. Deviation	0.23	0.24	0.17	0.18	0.18	0.29	0.19	0.22	0.26	0.23	0.26	0.19
% spKt/V >= 1.2	100%	100%	100%	100%	100%	96%	100%	100%	96%	100%	98%	100%

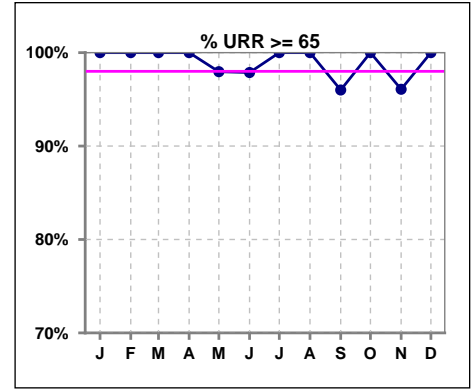


	Jan	Feb	Mar	Apr	May	Jun	Jul	Aug	Sep	Oct	Nov	Dec
# spKt/V w/ 3tx/wk	46	45	46	42	47	46	49	47	49	48	50	50
# spKt/V >= 1.2 w/3tx/wk	46	45	46	42	47	44	49	47	47	48	49	49
Pop. Mean	1.61	1.60	1.57	1.62	1.54	1.53	1.56	1.58	1.56	1.61	1.59	1.60
Std. Deviation	0.23	0.24	0.17	0.18	0.18	0.29	0.19	0.23	0.27	0.24	0.26	0.19
% >= 1.2 w/3tx/wk	100%	100%	100%	100%	100%	96%	100%	100%	96%	100%	98%	98%

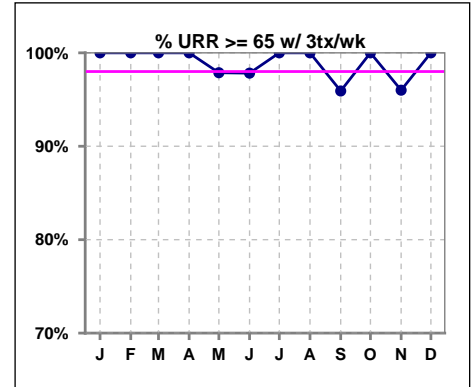


I. ADEQUACY OF DIALYSIS - CONT.

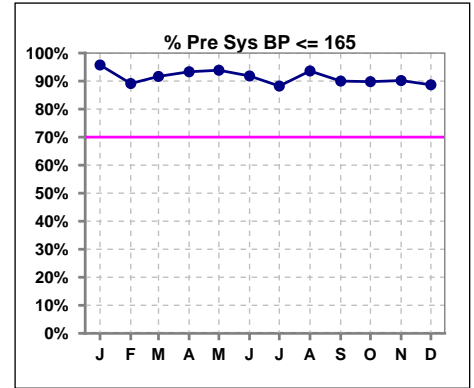
	Jan	Feb	Mar	Apr	May	Jun	Jul	Aug	Sep	Oct	Nov	Dec
# URR	47	46	48	45	49	47	51	48	50	49	51	53
# URR >= 65	47	46	48	45	48	46	51	48	48	49	49	53
Pop. Mean	75	75	75	75	74	73	74	74	74	75	74	75
Std. Deviation	4.60	4.76	3.83	3.86	4.22	6.67	3.99	4.64	6.66	4.89	6.06	4.17
% URR >= 65	100%	100%	100%	100%	98%	98%	100%	100%	96%	100%	96%	100%



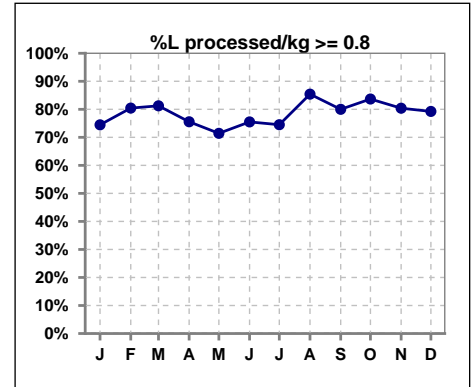
	Jan	Feb	Mar	Apr	May	Jun	Jul	Aug	Sep	Oct	Nov	Dec
# URR w/ 3tx/wk	46	45	46	42	47	46	49	47	49	48	50	50
# URR>=65 w/ 3tx/wk	46	45	46	42	46	45	49	47	47	48	48	50
Pop. Mean	75	75	75	75	74	73	74	74	74	75	74	75
Std. Deviation	4.57	4.79	3.76	3.88	4.22	6.72	4.03	4.68	6.71	4.89	6.07	4.06
% URR>=65 w/ 3tx/wk	100%	100%	100%	100%	98%	98%	100%	100%	96%	100%	96%	100%



	Jan	Feb	Mar	Apr	May	Jun	Jul	Aug	Sep	Oct	Nov	Dec
# Pre Sys BP	47	46	48	45	49	49	51	47	50	49	51	53
# Pre Sys BP <= 165	45	41	44	42	48	45	45	44	47	44	47	47
Pop. Mean	143	142	143	142	141	144	141	138	140	140	143	141
Std. Deviation	16.2	17.9	17.3	19.0	17.0	18.6	19.8	18.2	17.2	17.1	17.0	18.0
% Pre Sys BP <=165	96%	89%	92%	93%	94%	92%	88%	94%	90%	90%	90%	89%



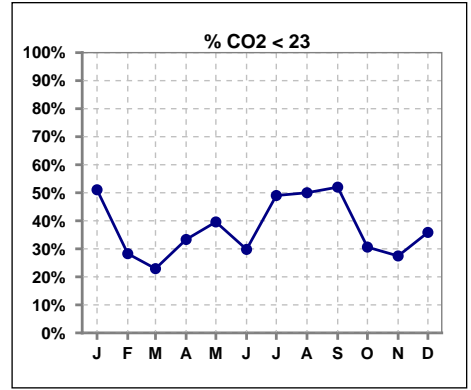
	Jan	Feb	Mar	Apr	May	Jun	Jul	Aug	Sep	Oct	Nov	Dec
# L processed/kg	47	46	48	45	49	49	51	48	50	49	51	53
# L processed/kg>=0.8	35	37	39	34	35	37	38	41	40	41	41	42
Pop. Mean	1	1	1	1	1	1	1	1	1	1	1	1
Std. Deviation	0.3	0.2	0.2	0.2	0.2	0.2	0.3	0.2	0.2	0.2	0.2	0.3
% L processed/kg>=0.8	74%	80%	81%	76%	71%	76%	75%	85%	80%	84%	80%	79%



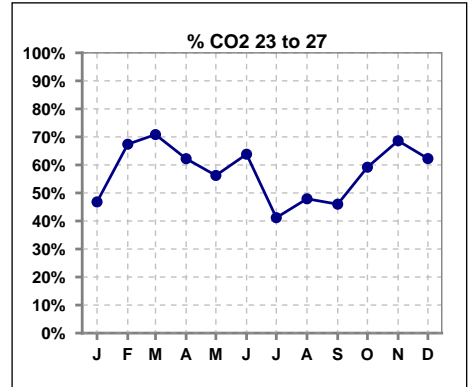
Methodology: a) All labs for 'Adequacy of Dialysis', 'Nutrition', 'Osteodystrophy', 'Anemia' and 'Diabetes' based on last value of month; b) BP's and #L processed are average of all values for month; c) Access data takes last access of month; d) Values for SGA and 'Infection Control' use most recent result.

I. ADEQUACY OF DIALYSIS - CONT.

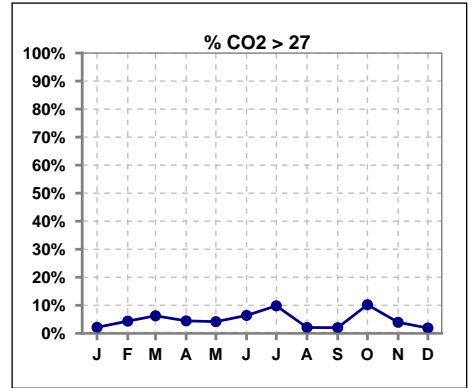
	Jan	Feb	Mar	Apr	May	Jun	Jul	Aug	Sep	Oct	Nov	Dec
# CO2	47	46	48	45	48	47	51	48	50	49	51	53
# CO2 < 23	24	13	11	15	19	14	25	24	26	15	14	19
Pop. Mean	23	24	24	23	23	24	23	23	23	24	24	23
Std. Deviation	2.57	2.14	3.30	2.07	2.84	2.60	2.99	2.53	2.64	2.44	2.57	1.89
% CO2 < 23	51%	28%	23%	33%	40%	30%	49%	50%	52%	31%	27%	36%



	Jan	Feb	Mar	Apr	May	Jun	Jul	Aug	Sep	Oct	Nov	Dec
# CO2	47	46	48	45	48	47	51	48	50	49	51	53
# CO2 23 to 27	22	31	34	28	27	30	21	23	23	29	35	33
Pop. Mean	23	24	24	23	23	24	23	23	23	24	24	23
Std. Deviation	2.57	2.14	3.30	2.07	2.84	2.60	2.99	2.53	2.64	2.44	2.57	1.89
% CO2 23 to 27	47%	67%	71%	62%	56%	64%	41%	48%	46%	59%	69%	62%



	Jan	Feb	Mar	Apr	May	Jun	Jul	Aug	Sep	Oct	Nov	Dec
# CO2	47	46	48	45	48	47	51	48	50	49	51	53
# CO2 > 27	1	2	3	2	2	3	5	1	1	5	2	1
Pop. Mean	23	24	24	23	23	24	23	23	23	24	24	23
Std. Deviation	2.57	2.14	3.30	2.07	2.84	2.60	2.99	2.53	2.64	2.44	2.57	1.89
% CO2 > 27	2%	4%	6%	4%	4%	6%	10%	2%	2%	10%	4%	2%

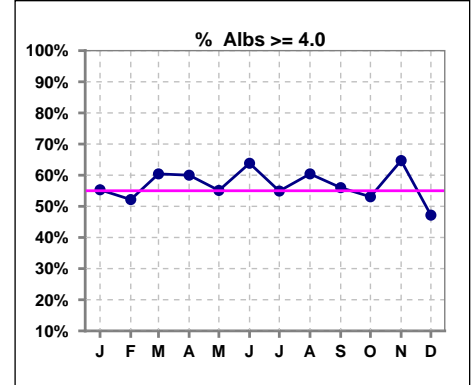


Methodology: a) All labs for 'Adequacy of Dialysis', 'Nutrition', 'Osteodystrophy', 'Anemia' and 'Diabetes' based on last value of month; b) BP's and #L processed are average of all values for month; c) Access data takes last access of month; d) Values for SGA and 'Infection Control' use most recent result.

*Albumin values use BCG method - as of July 2001

II. NUTRITION

	Jan	Feb	Mar	Apr	May	Jun	Jul	Aug	Sep	Oct	Nov	Dec
# Albumin	47	46	48	45	49	47	51	48	50	49	51	53
# Albumin >= 4.0	26	24	29	27	27	30	28	29	28	26	33	25
Pop. Mean	3.9	3.9	4.0	3.9	3.9	4.0	4.0	4.0	4.0	3.9	4.0	3.9
Std. Deviation	0.37	0.36	0.41	0.34	0.33	0.30	0.35	0.35	0.31	0.29	0.41	0.40
% Alb >= 4.0	55%	52%	60%	60%	55%	64%	55%	60%	56%	53%	65%	47%

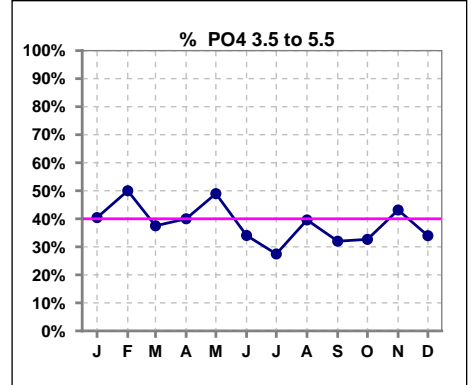


Methodology: a) All labs for 'Adequacy of Dialysis', 'Nutrition', 'Osteodystrophy', 'Anemia' and 'Diabetes' based on last value of month; b) BP's and #L processed are average of all values for month; c) Access data takes last access of month; d) Values for SGA and 'Infection Control' use most recent result.

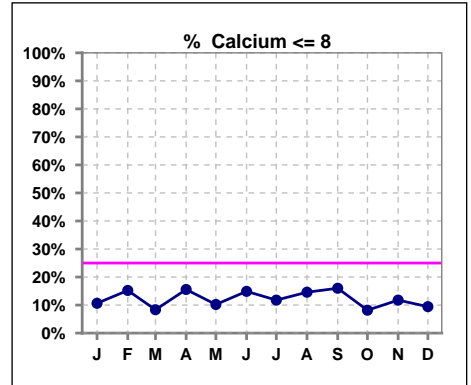
Lab methodology for PTH changed January 2012

III. OSTEODYSTROPHY

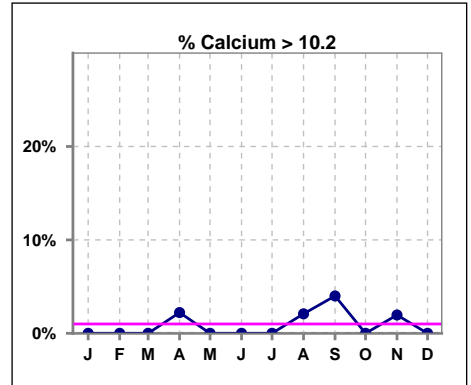
	Jan	Feb	Mar	Apr	May	Jun	Jul	Aug	Sep	Oct	Nov	Dec
# PO4	47	46	48	45	49	47	51	48	50	49	51	53
# PO4 3.5 to 5.5	19	23	18	18	24	16	14	19	16	16	22	18
Pop. Mean	6.2	5.8	6.0	6.2	5.9	6.0	6.1	6.0	6.2	6.1	6.1	6.1
Std. Deviation	1.92	1.97	2.23	1.86	1.82	1.66	1.87	1.82	2.03	1.62	2.04	1.64
% PO4 3.5 to 5.5	40%	50%	38%	40%	49%	34%	27%	40%	32%	33%	43%	34%



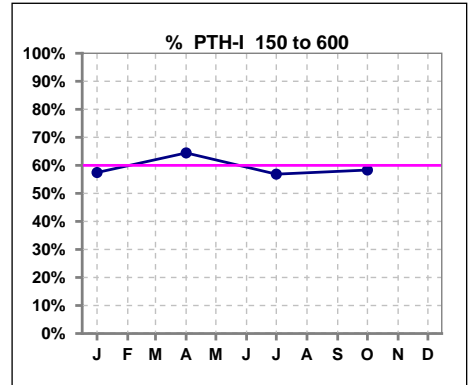
	Jan	Feb	Mar	Apr	May	Jun	Jul	Aug	Sep	Oct	Nov	Dec
# Calcium	47	46	48	45	49	47	51	48	50	49	51	53
# Calcium <= 8	5	7	4	7	5	7	6	7	8	4	6	5
Pop. Mean	9.1	9.0	9.0	9.0	8.9	8.9	9.0	9.0	8.9	9.1	9.1	9.0
Std. Deviation	0.76	0.81	0.66	0.74	0.62	0.82	0.66	0.76	0.85	0.75	0.73	0.73
% Calcium <= 8	11%	15%	8%	16%	10%	15%	12%	15%	16%	8%	12%	9%



	Jan	Feb	Mar	Apr	May	Jun	Jul	Aug	Sep	Oct	Nov	Dec
# Calcium	47	46	48	45	49	47	51	48	50	49	51	53
# Calcium > 10.2	0	0	0	1	0	0	0	1	2	0	1	0
Pop. Mean	9.1	9.0	9.0	9.0	8.9	8.9	9.0	9.0	8.9	9.1	9.1	9.0
Std. Deviation	0.76	0.81	0.66	0.74	0.62	0.82	0.66	0.76	0.85	0.75	0.73	0.73
% Calcium > 10.2	0%	0%	0%	2%	0%	0%	0%	2%	4%	0%	2%	0%



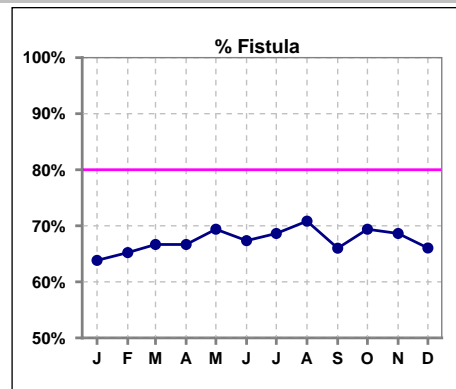
	Jan	Feb	Mar	Apr	May	Jun	Jul	Aug	Sep	Oct	Nov	Dec
# PTH-I	47			45			51			48		
# PTH-I 150 to 600	27			29			29			28		
Pop. Mean	454			504			481			432		
Std. Deviation	392			385			419			333		
% PTH-I 150 to 600	57%			64%			57%			58%		



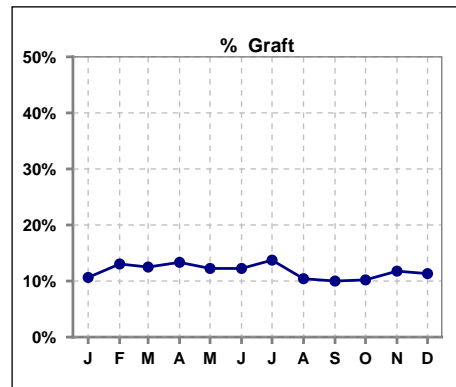
Methodology: a) All labs for 'Adequacy of Dialysis', 'Nutrition', 'Osteodystrophy', 'Anemia' and 'Diabetes' based on last value of month; b) BP's and #L processed are average of all values for month; c) Access data takes last access of month; d) Values for SGA and 'Infection Control' use most recent result.

IV. ACCESS

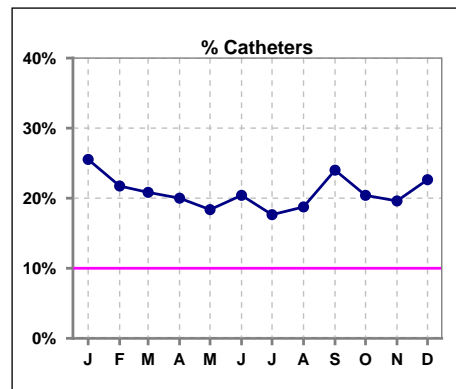
	Jan	Feb	Mar	Apr	May	Jun	Jul	Aug	Sep	Oct	Nov	Dec
# Access	47	46	48	45	49	49	51	48	50	49	51	53
# Fistula	30	30	32	30	34	33	35	34	33	34	35	35
% Fistula	64%	65%	67%	67%	69%	67%	69%	71%	66%	69%	69%	66%



	Jan	Feb	Mar	Apr	May	Jun	Jul	Aug	Sep	Oct	Nov	Dec
# Access	47	46	48	45	49	49	51	48	50	49	51	53
# Graft	5	6	6	6	6	6	7	5	5	5	6	6
% Graft	11%	13%	13%	13%	12%	12%	14%	10%	10%	10%	12%	11%



	Jan	Feb	Mar	Apr	May	Jun	Jul	Aug	Sep	Oct	Nov	Dec
# Access	47	46	48	45	49	49	51	48	50	49	51	53
# Catheters	12	10	10	9	9	10	9	9	12	10	10	12
% Catheters	26%	22%	21%	20%	18%	20%	18%	19%	24%	20%	20%	23%



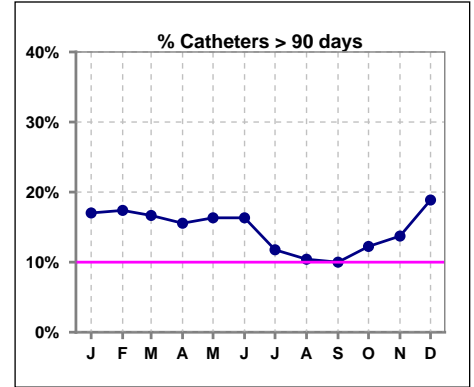
Methodology: a) All labs for 'Adequacy of Dialysis', 'Nutrition', 'Osteodystrophy', 'Anemia' and 'Diabetes' based on last value of month; b) BP's and #L processed are average of all values for month; c) Access data takes last access of month; d) Values for SGA and 'Infection Control' use most recent result.

IV. ACCESS - CONT.

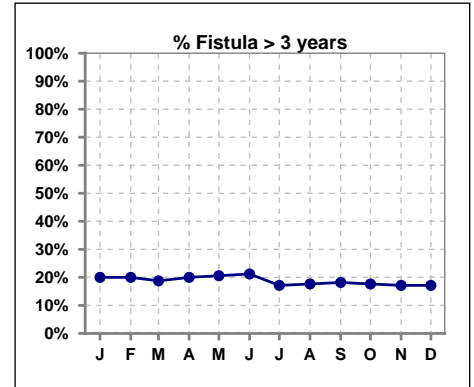
Catheters > 90 days

	Jan	Feb	Mar	Apr	May	Jun	Jul	Aug	Sep	Oct	Nov	Dec
# Access	47	46	48	45	49	49	51	48	50	49	51	53
# Catheters	8	8	8	7	8	8	6	5	5	6	7	10
% Catheters	17%	17%	17%	16%	16%	16%	12%	10%	10%	12%	14%	19%

Definition: Catheter in use on last treatment of the month



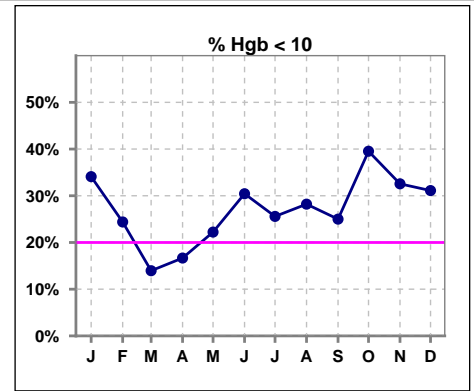
	Jan	Feb	Mar	Apr	May	Jun	Jul	Aug	Sep	Oct	Nov	Dec
# Fistula	30	30	32	30	34	33	35	34	33	34	35	35
# Fistula > 3 yrs	6	6	6	6	7	7	6	6	6	6	6	6
% Fistula > 3 yrs	20%	20%	19%	20%	21%	21%	17%	18%	18%	18%	17%	17%



V. ANEMIA

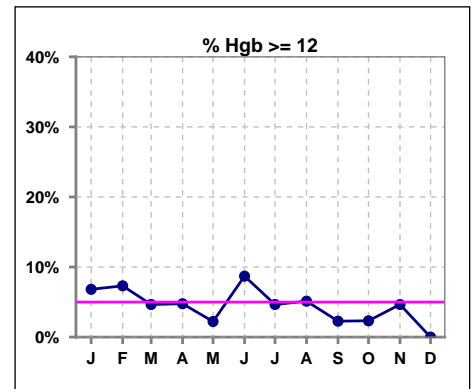
	Jan	Feb	Mar	Apr	May	Jun	Jul	Aug	Sep	Oct	Nov	Dec
# Hgb	44	41	43	42	45	46	43	39	44	43	43	45
# Hgb < 10	15	10	6	7	10	14	11	11	11	17	14	14
Pop. Mean	10.3	10.7	11.0	10.9	10.5	10.4	10.5	10.5	10.5	10.1	10.5	10.3
Std. Deviation	1.3	1.3	1.1	1.1	1.0	1.3	1.2	1.3	1.3	1.3	1.6	1.4
% Hgb < 10	34%	24%	14%	17%	22%	30%	26%	28%	25%	40%	33%	31%

Note: Excludes patients who received no ESA in month.



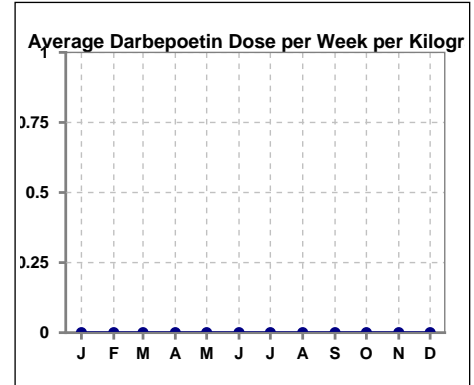
	Jan	Feb	Mar	Apr	May	Jun	Jul	Aug	Sep	Oct	Nov	Dec
# Hgb	44	41	43	42	45	46	43	39	44	43	43	45
# Hgb >= 12	3	3	2	2	1	4	2	2	1	1	2	0
Pop. Mean	10.3	10.7	11.0	10.9	10.5	10.4	10.5	10.5	10.5	10.1	10.5	10.3
Std. Deviation	1.3	1.3	1.1	1.1	1.0	1.3	1.2	1.3	1.3	1.3	1.6	1.4
% Hgb >= 12	7%	7%	5%	5%	2%	9%	5%	5%	2%	2%	5%	0%

Note: Excludes patients who received no ESA in month.



Average Darbepoetin Dose per Week per Kilogram

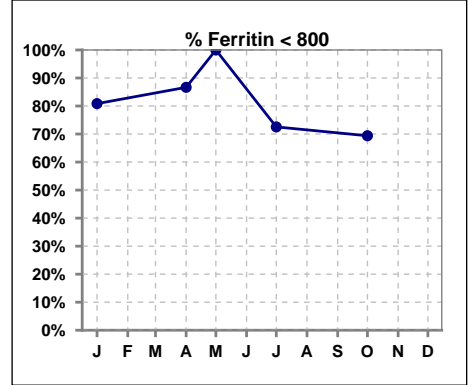
	Jan	Feb	Mar	Apr	May	Jun	Jul	Aug	Sep	Oct	Nov	Dec
# Average Darbepoetin	0	0	0	0	0	0	0	0	0	0	0	0



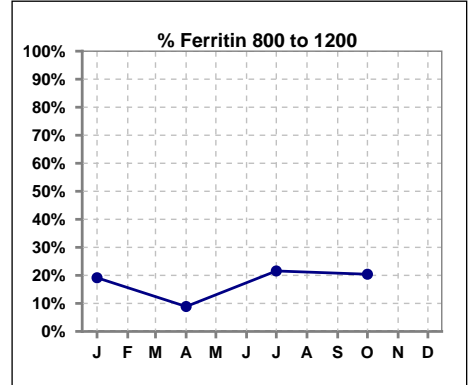
V. ANEMIA - CONT.

Iron Profile

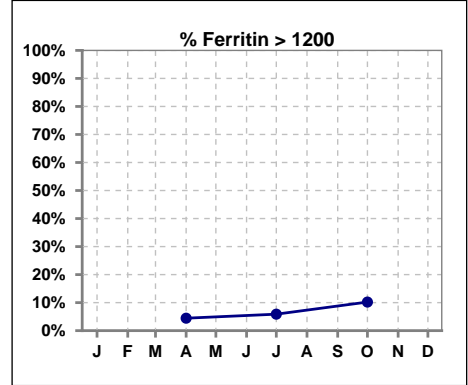
	Jan	Feb	Mar	Apr	May	Jun	Jul	Aug	Sep	Oct	Nov	Dec
# Ferritin	47			45	3		51			49		
# Ferritin < 800	38			39	3		37			34		
Pop. Mean	471			516	125		547			637		
Std. Deviation	314			341	70		369			495		
% Ferritin < 800	81%			87%	100%		73%			69%		



	Jan	Feb	Mar	Apr	May	Jun	Jul	Aug	Sep	Oct	Nov	Dec
# Ferritin	47			45	3		51			49		
# Ferritin 800 to 1200	9			4			11			10		
Pop. Mean	471			516	125		547			637		
Std. Deviation	314			341	70		369			495		
% Ferritin 800 to 1200	19%			9%			22%			20%		



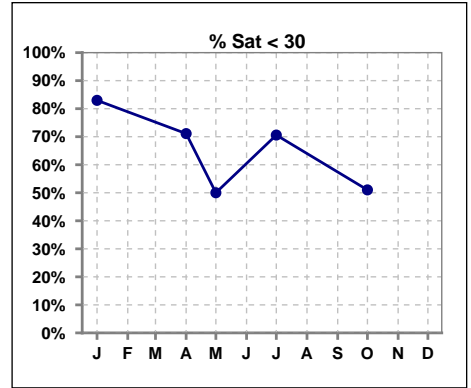
	Jan	Feb	Mar	Apr	May	Jun	Jul	Aug	Sep	Oct	Nov	Dec
# Ferritin	47			45	3		51			49		
# Ferritin > 1200				2			3			5		
Pop. Mean	471			516	125		547			637		
Std. Deviation	314			341	70		369			495		
% Ferritin > 1200				4%			6%			10%		



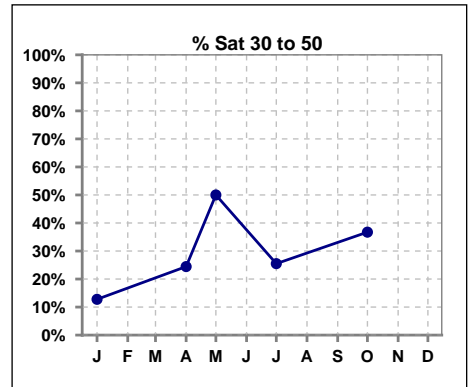
Methodology: a) All labs for 'Adequacy of Dialysis', 'Nutrition', 'Osteodystrophy', 'Anemia' and 'Diabetes' based on last value of month; b) BP's and #L processed are average of all values for month; c) Access data takes last access of month; d) Values for SGA and 'Infection Control' use most recent result.

V. ANEMIA - CONT.

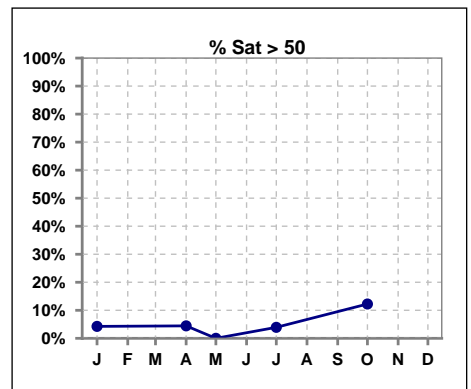
	Jan	Feb	Mar	Apr	May	Jun	Jul	Aug	Sep	Oct	Nov	Dec
# % Sat	47			45	4		51			49		
# % Sat < 30	39			32	2		36			25		
Pop. Mean	23			25	28		24			29		
Std. Deviation	12			13	16		13			16		
% % Sat < 30	83%			71%	50%		71%			51%		



	Jan	Feb	Mar	Apr	May	Jun	Jul	Aug	Sep	Oct	Nov	Dec
# % Sat	47			45	4		51			49		
# % Sat 30 to 50	6			11	2		13			18		
Pop. Mean	23			25	28		24			29		
Std. Deviation	12			13	16		13			16		
% % Sat 30 to 50	13%			24%	50%		25%			37%		



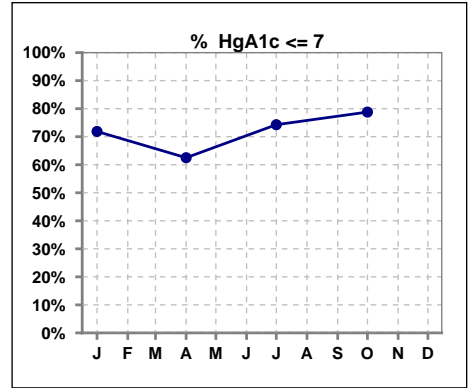
	Jan	Feb	Mar	Apr	May	Jun	Jul	Aug	Sep	Oct	Nov	Dec
# % Sat	47			45	4		51			49		
# % Sat > 50	2			2	0		2			6		
Pop. Mean	23			25	28		24			29		
Std. Deviation	12			13	16		13			16		
% % Sat > 50	4%			4%	0%		4%			12%		



Methodology: a) All labs for 'Adequacy of Dialysis', 'Nutrition', 'Osteodystrophy', 'Anemia' and 'Diabetes' based on last value of month; b) BP's and #L processed are average of all values for month; c) Access data takes last access of month; d) Values for SGA and 'Infection Control' use most recent result.

VI. Diabetes

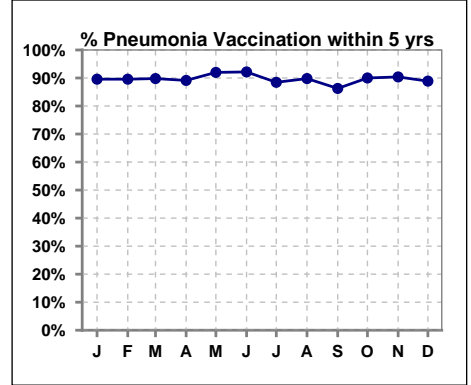
	Jan	Feb	Mar	Apr	May	Jun	Jul	Aug	Sep	Oct	Nov	Dec
# HgA1c	32			32			35			33		
# HgA1c <= 7	23			20			26			26		
Pop. Mean	6.5			6.9			6.3			6.2		
Std. Deviation	1.35			1.84			1.49			1.46		
% HgA1c <= 7	72%			63%			74%			79%		



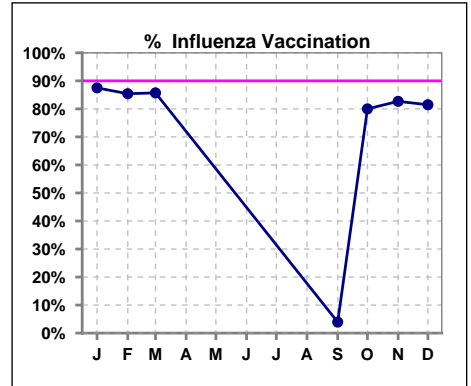
VII. Infection Control

Pneumonia vaccination within the past five years

	Jan	Feb	Mar	Apr	May	Jun	Jul	Aug	Sep	Oct	Nov	Dec
# Patient	48	48	49	46	50	51	52	49	51	50	52	54
# Pneumonia	43	43	44	41	46	47	46	44	44	45	47	48
% Pneumonia	90%	90%	90%	89%	92%	92%	88%	90%	86%	90%	90%	89%



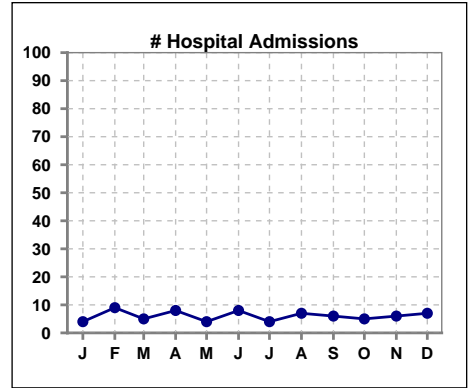
	Jan	Feb	Mar	Apr	May	Jun	Jul	Aug	Sep	Oct	Nov	Dec
# Patient	48	48	49						51	50	52	54
# Influenza	42	41	42						2	40	43	44
% Influenza	88%	85%	86%						4%	80%	83%	81%



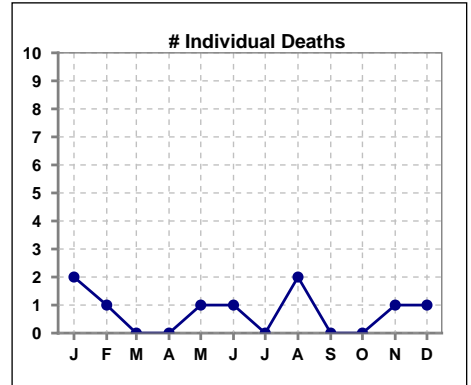
Methodology: a) All labs for 'Adequacy of Dialysis', 'Nutrition', 'Osteodystrophy', 'Anemia' and 'Diabetes' based on last value of month; b) BP's and #L processed are average of all values for month; c) Access data takes last access of month; d) Values for SGA and 'Infection Control' use most recent result.

VIII. Outcome measures

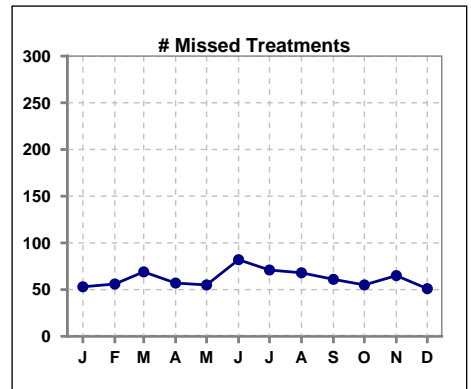
	Jan	Feb	Mar	Apr	May	Jun	Jul	Aug	Sep	Oct	Nov	Dec
# Patient	48	48	49	46	50	51	52	49	51	50	52	54
# Hospital Admissions	4	9	5	8	4	8	4	7	6	5	6	7



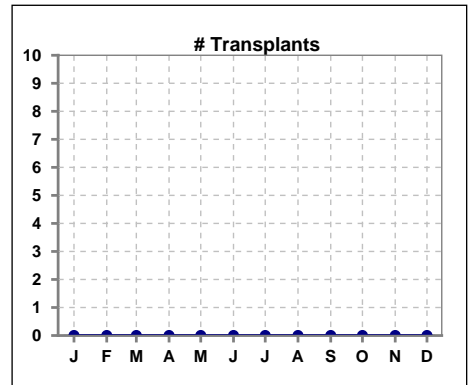
	Jan	Feb	Mar	Apr	May	Jun	Jul	Aug	Sep	Oct	Nov	Dec
# Patient	48	48	49	46	50	51	52	49	51	50	52	54
# Individual Deaths	2	1	0	0	1	1	0	2	0	0	1	1



	Jan	Feb	Mar	Apr	May	Jun	Jul	Aug	Sep	Oct	Nov	Dec
# Patient	48	48	49	46	50	51	52	49	51	50	52	54
# Missed Treatments	53	56	69	57	55	82	71	68	61	55	65	51



	Jan	Feb	Mar	Apr	May	Jun	Jul	Aug	Sep	Oct	Nov	Dec
# Patient	48	48	49	46	50	51	52	49	51	50	52	54
# Transplants	0	0	0	0	0	0	0	0	0	0	0	0



Methodology: a) All labs for 'Adequacy of Dialysis', 'Nutrition', 'Osteodystrophy', 'Anemia' and 'Diabetes' based on last value of month; b) BP's and #L processed are average of all values for month; c) Access data takes last access of month; d) Values for SGA and 'Infection Control' use most recent result.