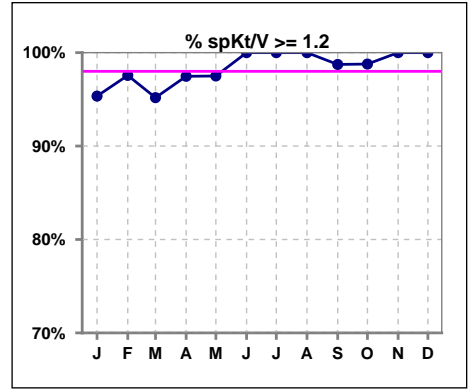
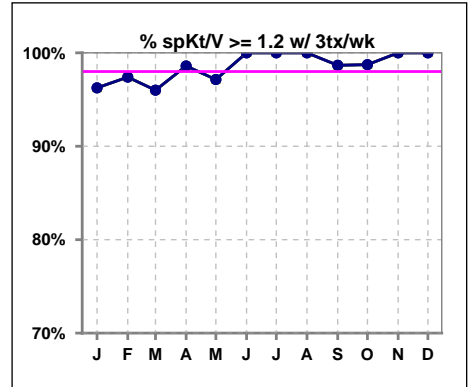


I. ADEQUACY OF DIALYSIS

	Jan	Feb	Mar	Apr	May	Jun	Jul	Aug	Sep	Oct	Nov	Dec
# spKt/V	86	82	83	79	80	82	81	80	79	82	82	83
# spKt/V >= 1.2	82	80	79	77	78	82	81	80	78	81	82	83
Pop. Mean	1.61	1.64	1.62	1.61	1.62	1.66	1.63	1.65	1.61	1.65	1.67	1.64
Std. Deviation	0.30	0.29	0.34	0.28	0.28	0.28	0.25	0.30	0.29	0.31	0.28	0.27
% spKt/V >= 1.2	95%	98%	95%	97%	98%	100%	100%	100%	99%	99%	100%	100%

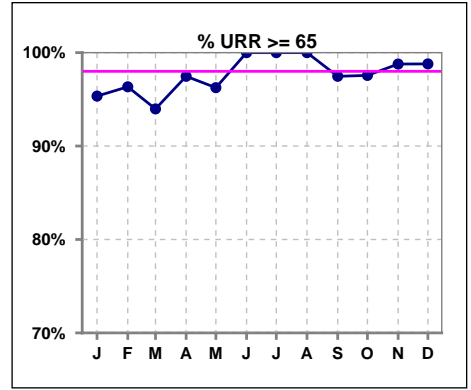


	Jan	Feb	Mar	Apr	May	Jun	Jul	Aug	Sep	Oct	Nov	Dec
# spKt/V w/ 3tx/wk	80	77	75	71	70	74	76	71	75	79	77	79
# spKt/V >= 1.2 w/3tx/wk	77	75	72	70	68	74	76	71	74	78	77	79
Pop. Mean	1.63	1.64	1.62	1.63	1.63	1.65	1.64	1.67	1.62	1.65	1.68	1.65
Std. Deviation	0.29	0.29	0.34	0.27	0.28	0.27	0.25	0.31	0.28	0.31	0.28	0.27
% >= 1.2 w/3tx/wk	96%	97%	96%	99%	97%	100%	100%	100%	99%	99%	100%	100%

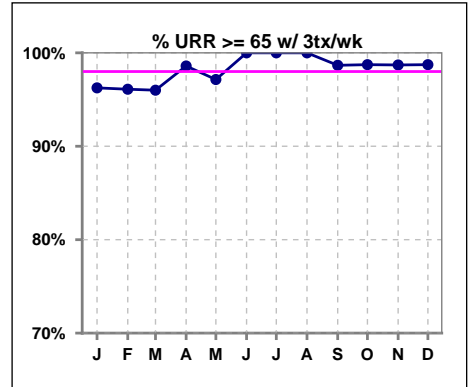


I. ADEQUACY OF DIALYSIS - CONT.

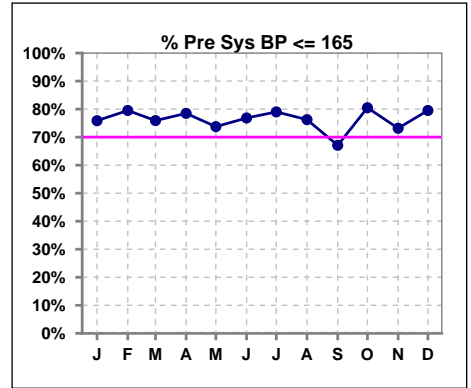
	Jan	Feb	Mar	Apr	May	Jun	Jul	Aug	Sep	Oct	Nov	Dec
# URR	86	82	83	79	80	82	81	80	79	82	82	83
# URR >= 65	82	79	78	77	77	82	81	80	77	80	81	82
Pop. Mean	75	75	74	75	75	76	75	75	74	75	76	75
Std. Deviation	6.46	5.92	7.70	5.62	5.72	5.52	4.98	5.30	5.97	5.91	5.48	5.23
% URR >= 65	95%	96%	94%	97%	96%	100%	100%	100%	97%	98%	99%	99%



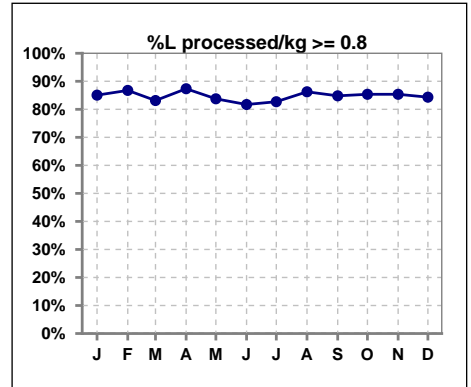
	Jan	Feb	Mar	Apr	May	Jun	Jul	Aug	Sep	Oct	Nov	Dec
# URR w/ 3tx/wk	80	77	75	71	70	74	76	71	75	79	77	79
# URR>=65 w/ 3tx/wk	77	74	72	70	68	74	76	71	74	78	76	78
Pop. Mean	75	75	75	75	75	75	75	76	75	75	76	76
Std. Deviation	6.08	5.94	7.60	5.35	5.63	5.33	5.01	5.31	5.88	5.80	5.37	5.21
% URR>=65 w/ 3tx/wk	96%	96%	96%	99%	97%	100%	100%	100%	99%	99%	99%	99%



	Jan	Feb	Mar	Apr	May	Jun	Jul	Aug	Sep	Oct	Nov	Dec
# Pre Sys BP	87	83	83	79	80	82	81	80	79	82	82	83
# Pre Sys BP <= 165	70	67	63	63	60	64	64	62	57	68	63	66
Pop. Mean	148	149	150	148	148	147	149	148	150	149	149	146
Std. Deviation	21.6	20.5	23.1	22.1	21.2	22.8	23.9	23.0	23.2	21.2	22.8	22.5
% Pre Sys BP <=165	76%	80%	76%	78%	74%	77%	79%	76%	67%	80%	73%	80%



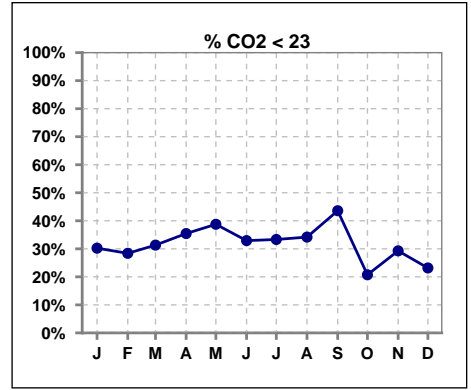
	Jan	Feb	Mar	Apr	May	Jun	Jul	Aug	Sep	Oct	Nov	Dec
# L processed/kg	87	83	83	79	80	82	81	80	79	82	82	83
# L processed/kg>=0.8	74	72	69	69	67	67	67	69	67	70	70	70
Pop. Mean	1	1	1	1	1	1	1	1	1	1	1	1
Std. Deviation	0.2	0.2	0.2	0.2	0.2	0.2	0.2	0.2	0.2	0.2	0.2	0.3
% L processed/kg>=0.8	85%	87%	83%	87%	84%	82%	83%	86%	85%	85%	85%	84%



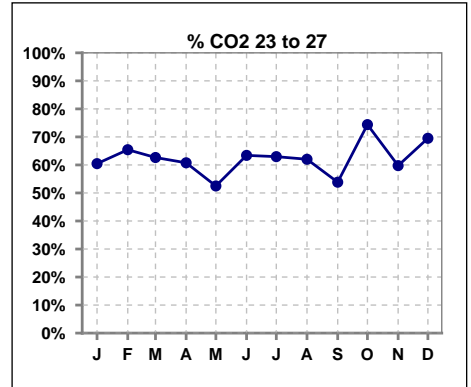
Methodology: a) All labs for 'Adequacy of Dialysis', 'Nutrition', 'Osteodystrophy', 'Anemia' and 'Diabetes' based on last value of month; b) BP's and #L processed are average of all values for month; c) Access data takes last access of month; d) Values for SGA and 'Infection Control' use most recent result.

I. ADEQUACY OF DIALYSIS - CONT.

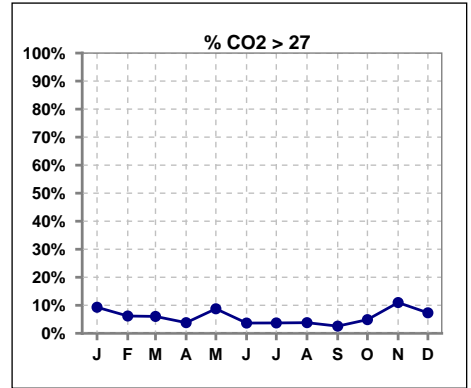
	Jan	Feb	Mar	Apr	May	Jun	Jul	Aug	Sep	Oct	Nov	Dec
# CO2	86	81	83	79	80	82	81	79	78	82	82	82
# CO2 < 23	26	23	26	28	31	27	27	27	34	17	24	19
Pop. Mean	24	24	24	23	23	23	23	23	23	24	24	24
Std. Deviation	2.76	3.03	2.58	2.52	2.83	2.86	3.14	2.75	2.80	2.90	2.90	2.81
% CO2 < 23	30%	28%	31%	35%	39%	33%	33%	34%	44%	21%	29%	23%



	Jan	Feb	Mar	Apr	May	Jun	Jul	Aug	Sep	Oct	Nov	Dec
# CO2	86	81	83	79	80	82	81	79	78	82	82	82
# CO2 23 to 27	52	53	52	48	42	52	51	49	42	61	49	57
Pop. Mean	24	24	24	23	23	23	23	23	23	24	24	24
Std. Deviation	2.76	3.03	2.58	2.52	2.83	2.86	3.14	2.75	2.80	2.90	2.90	2.81
% CO2 23 to 27	60%	65%	63%	61%	53%	63%	63%	62%	54%	74%	60%	70%



	Jan	Feb	Mar	Apr	May	Jun	Jul	Aug	Sep	Oct	Nov	Dec
# CO2	86	81	83	79	80	82	81	79	78	82	82	82
# CO2 > 27	8	5	5	3	7	3	3	3	2	4	9	6
Pop. Mean	24	24	24	23	23	23	23	23	23	24	24	24
Std. Deviation	2.76	3.03	2.58	2.52	2.83	2.86	3.14	2.75	2.80	2.90	2.90	2.81
% CO2 > 27	9%	6%	6%	4%	9%	4%	4%	4%	3%	5%	11%	7%

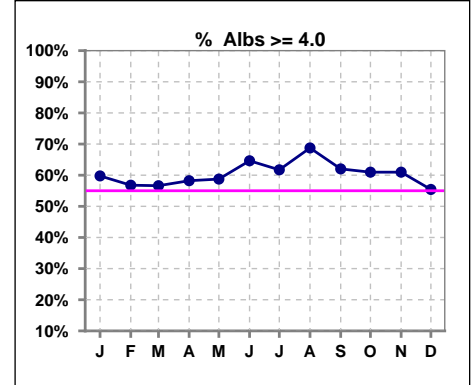


Methodology: a) All labs for 'Adequacy of Dialysis', 'Nutrition', 'Osteodystrophy', 'Anemia' and 'Diabetes' based on last value of month; b) BP's and #L processed are average of all values for month; c) Access data takes last access of month; d) Values for SGA and 'Infection Control' use most recent result.

*Albumin values use BCG method - as of July 2001

II. NUTRITION

	Jan	Feb	Mar	Apr	May	Jun	Jul	Aug	Sep	Oct	Nov	Dec
# Albumin	87	81	83	79	80	82	81	80	79	82	82	83
# Albumin >= 4.0	52	46	47	46	47	53	50	55	49	50	50	46
Pop. Mean	3.9	4.0	3.9	4.0	4.0	4.0	4.0	4.0	4.0	4.0	4.0	4.0
Std. Deviation	0.44	0.44	0.42	0.44	0.45	0.51	0.45	0.46	0.46	0.41	0.43	0.40
% Alb >= 4.0	60%	57%	57%	58%	59%	65%	62%	69%	62%	61%	61%	55%

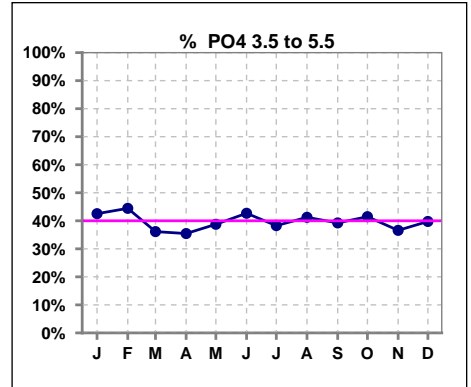


Methodology: a) All labs for 'Adequacy of Dialysis', 'Nutrition', 'Osteodystrophy', 'Anemia' and 'Diabetes' based on last value of month; b) BP's and #L processed are average of all values for month; c) Access data takes last access of month; d) Values for SGA and 'Infection Control' use most recent result.

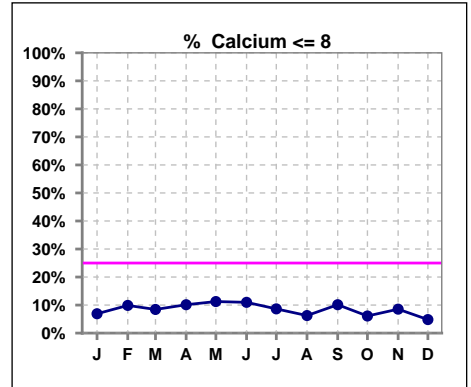
Lab methodology for PTH changed January 2012

III. OSTEODYSTROPHY

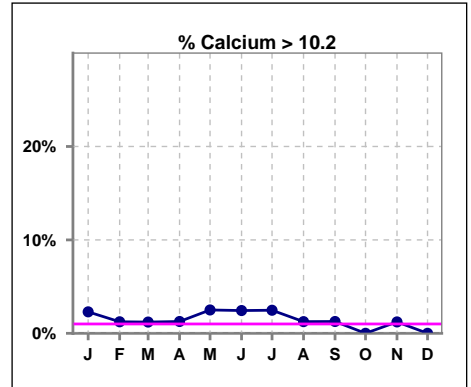
	Jan	Feb	Mar	Apr	May	Jun	Jul	Aug	Sep	Oct	Nov	Dec
# PO4	87	81	83	79	80	82	81	80	79	82	82	83
# PO4 3.5 to 5.5	37	36	30	28	31	35	31	33	31	34	30	33
Pop. Mean	5.8	6.1	6.1	6.1	6.1	5.9	6.1	6.2	6.3	5.9	6.0	6.0
Std. Deviation	1.62	1.84	2.04	1.96	1.95	1.97	1.80	1.92	2.05	1.71	1.90	2.01
% PO4 3.5 to 5.5	43%	44%	36%	35%	39%	43%	38%	41%	39%	41%	37%	40%



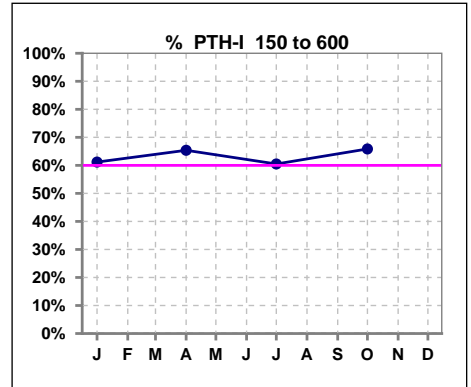
	Jan	Feb	Mar	Apr	May	Jun	Jul	Aug	Sep	Oct	Nov	Dec
# Calcium	87	81	83	79	80	82	81	80	79	82	82	83
# Calcium <= 8	6	8	7	8	9	9	7	5	8	5	7	4
Pop. Mean	9.0	9.0	9.0	9.0	9.1	8.9	8.9	9.0	8.9	9.1	9.1	9.2
Std. Deviation	0.80	0.79	0.64	0.70	0.84	0.83	0.78	0.65	0.79	0.64	0.67	0.65
% Calcium <= 8	7%	10%	8%	10%	11%	11%	9%	6%	10%	6%	9%	5%



	Jan	Feb	Mar	Apr	May	Jun	Jul	Aug	Sep	Oct	Nov	Dec
# Calcium	87	81	83	79	80	82	81	80	79	82	82	83
# Calcium > 10.2	2	1	1	1	2	2	2	1	1	0	1	0
Pop. Mean	9.0	9.0	9.0	9.0	9.1	8.9	8.9	9.0	8.9	9.1	9.1	9.2
Std. Deviation	0.80	0.79	0.64	0.70	0.84	0.83	0.78	0.65	0.79	0.64	0.67	0.65
% Calcium > 10.2	2%	1%	1%	1%	3%	2%	2%	1%	1%	0%	1%	0%



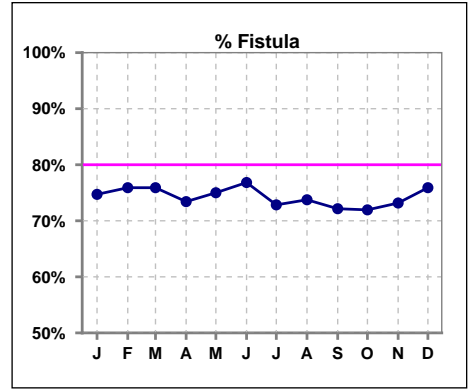
	Jan	Feb	Mar	Apr	May	Jun	Jul	Aug	Sep	Oct	Nov	Dec
# PTH-I	85			78			81			82		
# PTH-I 150 to 600	52			51			49			54		
Pop. Mean	503			524			510			488		
Std. Deviation	631			713			617			587		
% PTH-I 150 to 600	61%			65%			60%			66%		



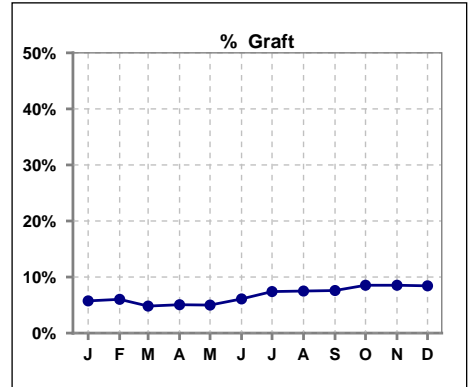
Methodology: a) All labs for 'Adequacy of Dialysis', 'Nutrition', 'Osteodystrophy', 'Anemia' and 'Diabetes' based on last value of month; b) BP's and #L processed are average of all values for month; c) Access data takes last access of month; d) Values for SGA and 'Infection Control' use most recent result.

IV. ACCESS

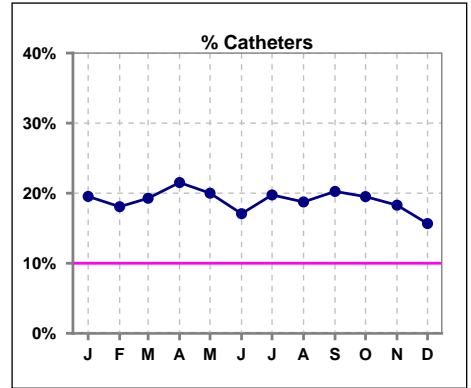
	Jan	Feb	Mar	Apr	May	Jun	Jul	Aug	Sep	Oct	Nov	Dec
# Access	87	83	83	79	80	82	81	80	79	82	82	83
# Fistula	65	63	63	58	60	63	59	59	57	59	60	63
% Fistula	75%	76%	76%	73%	75%	77%	73%	74%	72%	72%	73%	76%



	Jan	Feb	Mar	Apr	May	Jun	Jul	Aug	Sep	Oct	Nov	Dec
# Access	87	83	83	79	80	82	81	80	79	82	82	83
# Graft	5	5	4	4	4	5	6	6	6	7	7	7
% Graft	6%	6%	5%	5%	5%	6%	7%	8%	8%	9%	9%	8%



	Jan	Feb	Mar	Apr	May	Jun	Jul	Aug	Sep	Oct	Nov	Dec
# Access	87	83	83	79	80	82	81	80	79	82	82	83
# Catheters	17	15	16	17	16	14	16	15	16	16	15	13
% Catheters	20%	18%	19%	22%	20%	17%	20%	19%	20%	20%	18%	16%



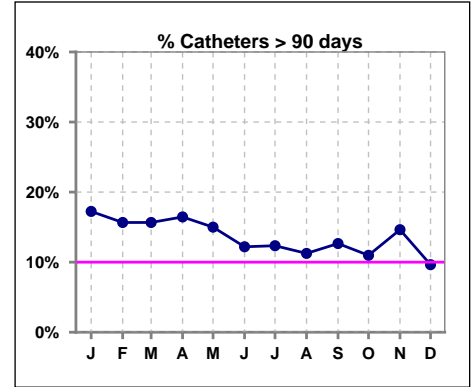
Methodology: a) All labs for 'Adequacy of Dialysis', 'Nutrition', 'Osteodystrophy', 'Anemia' and 'Diabetes' based on last value of month; b) BP's and #L processed are average of all values for month; c) Access data takes last access of month; d) Values for SGA and 'Infection Control' use most recent result.

IV. ACCESS - CONT.

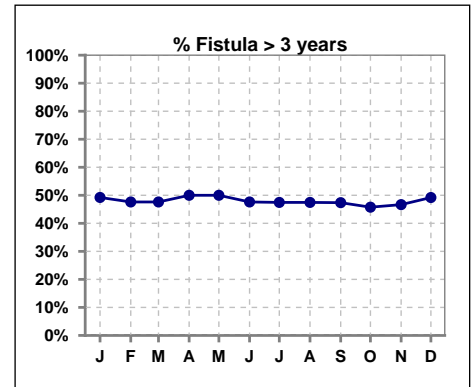
Catheters > 90 days

	Jan	Feb	Mar	Apr	May	Jun	Jul	Aug	Sep	Oct	Nov	Dec
# Access	87	83	83	79	80	82	81	80	79	82	82	83
# Catheters	15	13	13	13	12	10	10	9	10	9	12	8
% Catheters	17%	16%	16%	16%	15%	12%	12%	11%	13%	11%	15%	10%

Definition: Catheter in use on last treatment of the month



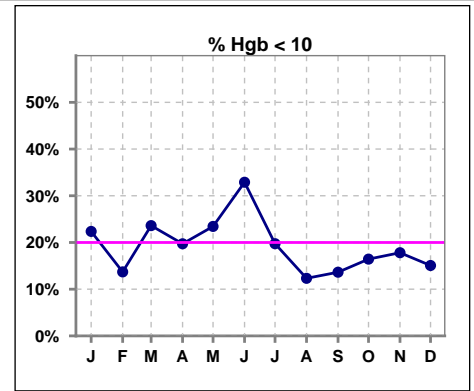
	Jan	Feb	Mar	Apr	May	Jun	Jul	Aug	Sep	Oct	Nov	Dec
# Fistula	65	63	63	58	60	63	59	59	57	59	60	63
# Fistula > 3 yrs	32	30	30	29	30	30	28	28	27	27	28	31
% Fistula > 3 yrs	49%	48%	48%	50%	50%	48%	47%	47%	47%	46%	47%	49%



V. ANEMIA

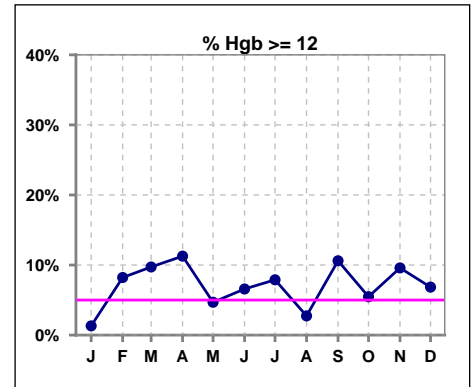
	Jan	Feb	Mar	Apr	May	Jun	Jul	Aug	Sep	Oct	Nov	Dec
# Hgb	76	73	72	71	64	76	76	73	66	73	73	73
# Hgb < 10	17	10	17	14	15	25	15	9	9	12	13	11
Pop. Mean	10.5	10.6	10.5	10.7	10.4	10.4	10.4	10.7	11.0	10.6	10.7	10.8
Std. Deviation	1.1	1.3	1.3	1.4	1.5	1.5	1.4	1.1	1.3	1.4	1.3	1.3
% Hgb < 10	22%	14%	24%	20%	23%	33%	20%	12%	14%	16%	18%	15%

Note: Excludes patients who received no ESA in month.



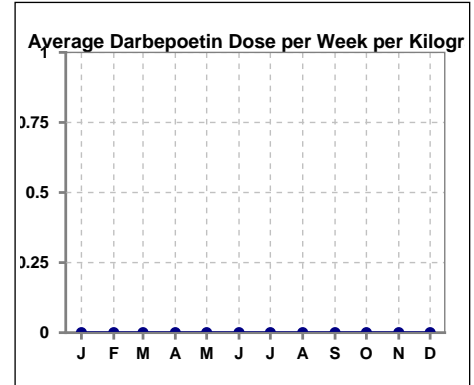
	Jan	Feb	Mar	Apr	May	Jun	Jul	Aug	Sep	Oct	Nov	Dec
# Hgb	76	73	72	71	64	76	76	73	66	73	73	73
# Hgb >= 12	1	6	7	8	3	5	6	2	7	4	7	5
Pop. Mean	10.5	10.6	10.5	10.7	10.4	10.4	10.4	10.7	11.0	10.6	10.7	10.8
Std. Deviation	1.1	1.3	1.3	1.4	1.5	1.5	1.4	1.1	1.3	1.4	1.3	1.3
% Hgb >= 12	1%	8%	10%	11%	5%	7%	8%	3%	11%	5%	10%	7%

Note: Excludes patients who received no ESA in month.



Average Darbepoetin Dose per Week per Kilogram

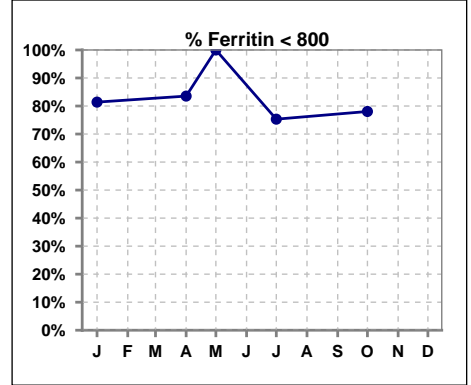
	Jan	Feb	Mar	Apr	May	Jun	Jul	Aug	Sep	Oct	Nov	Dec
# Average Darbepoetin	0	0	0	0	0	0	0	0	0	0	0	0



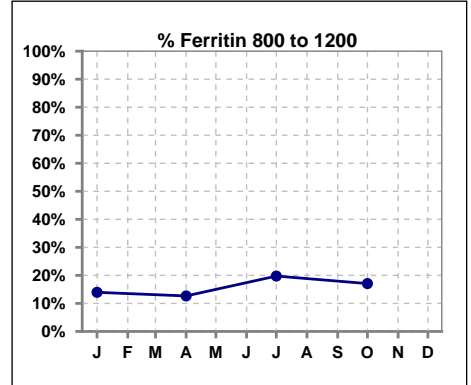
V. ANEMIA - CONT.

Iron Profile

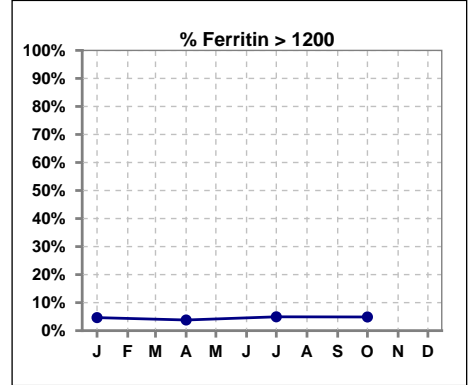
	Jan	Feb	Mar	Apr	May	Jun	Jul	Aug	Sep	Oct	Nov	Dec
# Ferritin	86			79	2		81			82		
# Ferritin < 800	70			66	2		61			64		
Pop. Mean	513			529	90		615			518		
Std. Deviation	650			808	65		805			344		
% Ferritin < 800	81%			84%	100%		75%			78%		



	Jan	Feb	Mar	Apr	May	Jun	Jul	Aug	Sep	Oct	Nov	Dec
# Ferritin	86			79	2		81			82		
# Ferritin 800 to 1200	12			10			16			14		
Pop. Mean	513			529	90		615			518		
Std. Deviation	650			808	65		805			344		
% Ferritin 800 to 1200	14%			13%			20%			17%		



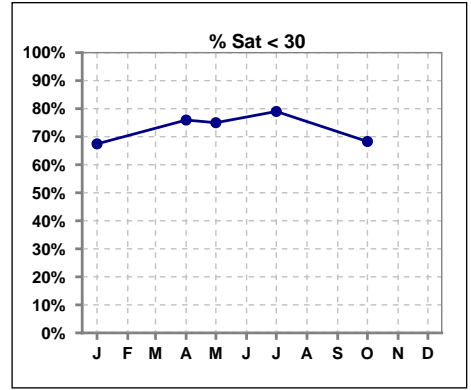
	Jan	Feb	Mar	Apr	May	Jun	Jul	Aug	Sep	Oct	Nov	Dec
# Ferritin	86			79	2		81			82		
# Ferritin > 1200	4			3			4			4		
Pop. Mean	513			529	90		615			518		
Std. Deviation	650			808	65		805			344		
% Ferritin > 1200	5%			4%			5%			5%		



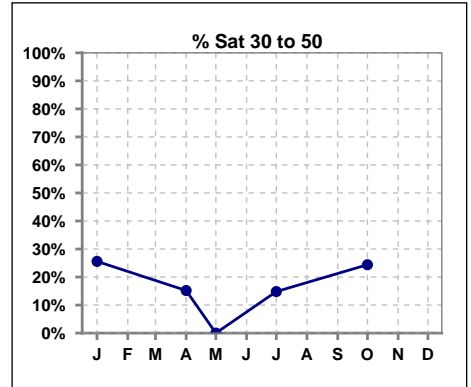
Methodology: a) All labs for 'Adequacy of Dialysis', 'Nutrition', 'Osteodystrophy', 'Anemia' and 'Diabetes' based on last value of month; b) BP's and #L processed are average of all values for month; c) Access data takes last access of month; d) Values for SGA and 'Infection Control' use most recent result.

V. ANEMIA - CONT.

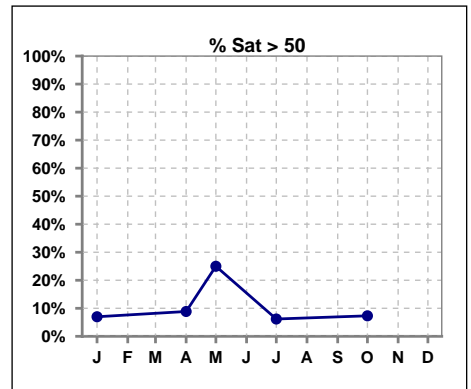
	Jan	Feb	Mar	Apr	May	Jun	Jul	Aug	Sep	Oct	Nov	Dec
# % Sat	86			79	4		81			82		
# % Sat < 30	58			60	3		64			56		
Pop. Mean	28			26	26		24			26		
Std. Deviation	29			18	21		14			16		
% % Sat < 30	67%			76%	75%		79%			68%		



	Jan	Feb	Mar	Apr	May	Jun	Jul	Aug	Sep	Oct	Nov	Dec
# % Sat	86			79	4		81			82		
# % Sat 30 to 50	22			12	0		12			20		
Pop. Mean	28			26	26		24			26		
Std. Deviation	29			18	21		14			16		
% % Sat 30 to 50	26%			15%	0%		15%			24%		



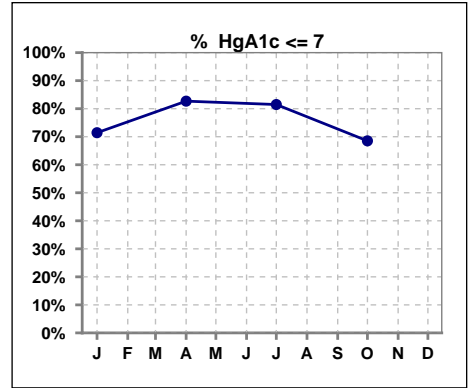
	Jan	Feb	Mar	Apr	May	Jun	Jul	Aug	Sep	Oct	Nov	Dec
# % Sat	86			79	4		81			82		
# % Sat > 50	6			7	1		5			6		
Pop. Mean	28			26	26		24			26		
Std. Deviation	29			18	21		14			16		
% % Sat > 50	7%			9%	25%		6%			7%		



Methodology: a) All labs for 'Adequacy of Dialysis', 'Nutrition', 'Osteodystrophy', 'Anemia' and 'Diabetes' based on last value of month; b) BP's and #L processed are average of all values for month; c) Access data takes last access of month; d) Values for SGA and 'Infection Control' use most recent result.

VI. Diabetes

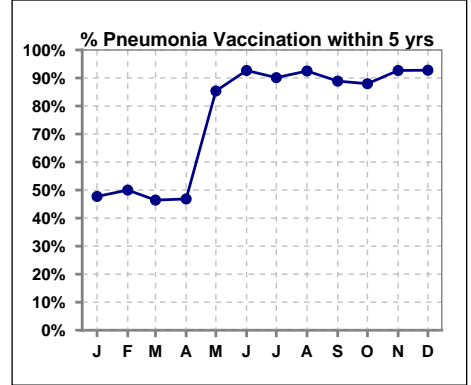
	Jan	Feb	Mar	Apr	May	Jun	Jul	Aug	Sep	Oct	Nov	Dec
# HgA1c	56			52			54			54		
# HgA1c <= 7	40			43			44			37		
Pop. Mean	6.3			6.0			6.2			6.5		
Std. Deviation	1.63			1.36			1.28			1.53		
% HgA1c <= 7	71%			83%			81%			69%		



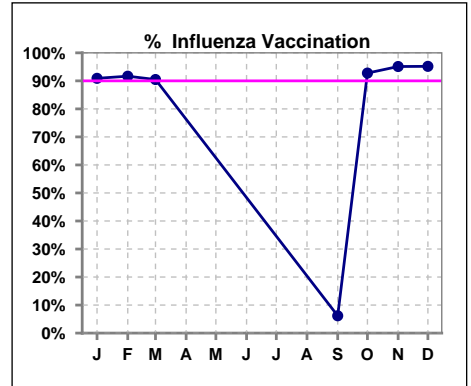
VII. Infection Control

Pneumonia vaccination within the past five years

	Jan	Feb	Mar	Apr	May	Jun	Jul	Aug	Sep	Oct	Nov	Dec
# Patient	88	84	84	79	82	82	81	80	81	83	82	83
# Pneumonia	42	42	39	37	70	76	73	74	72	73	76	77
% Pneumonia	48%	50%	46%	47%	85%	93%	90%	93%	89%	88%	93%	93%



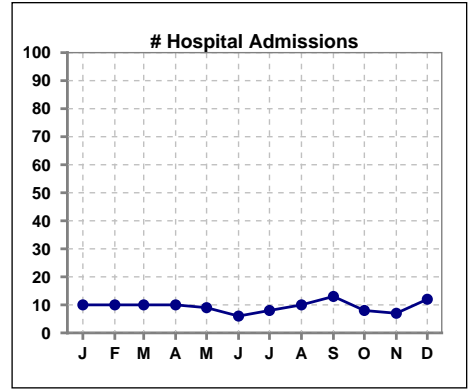
	Jan	Feb	Mar	Apr	May	Jun	Jul	Aug	Sep	Oct	Nov	Dec
# Patient	88	84	84						81	83	82	83
# Influenza	80	77	76						5	77	78	79
% Influenza	91%	92%	90%						6%	93%	95%	95%



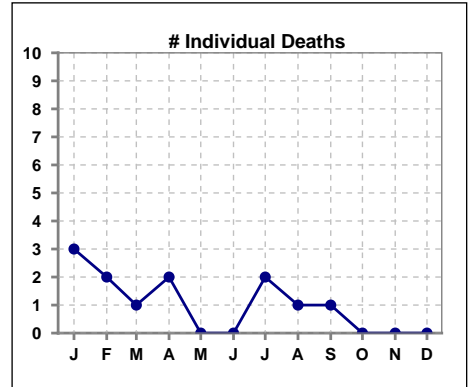
Methodology: a) All labs for 'Adequacy of Dialysis', 'Nutrition', 'Osteodystrophy', 'Anemia' and 'Diabetes' based on last value of month; b) BP's and #L processed are average of all values for month; c) Access data takes last access of month; d) Values for SGA and 'Infection Control' use most recent result.

VIII. Outcome measures

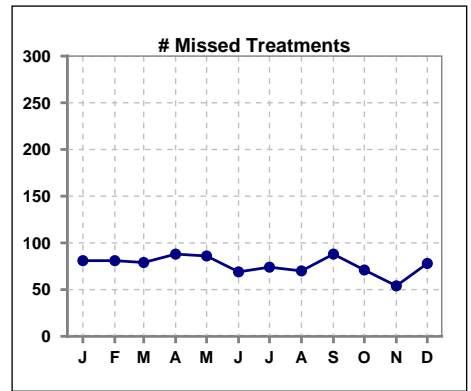
	Jan	Feb	Mar	Apr	May	Jun	Jul	Aug	Sep	Oct	Nov	Dec
# Patient	88	84	84	79	82	82	81	80	81	83	82	83
# Hospital Admissions	10	10	10	10	9	6	8	10	13	8	7	12



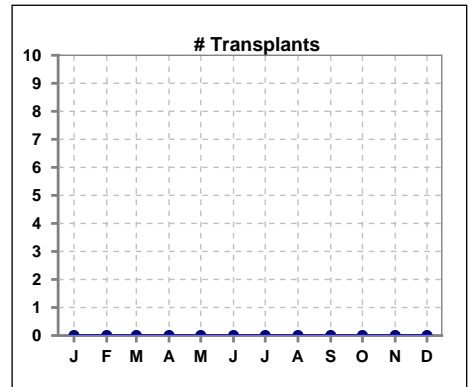
	Jan	Feb	Mar	Apr	May	Jun	Jul	Aug	Sep	Oct	Nov	Dec
# Patient	88	84	84	79	82	82	81	80	81	83	82	83
# Individual Deaths	3	2	1	2	0	0	2	1	1	0	0	0



	Jan	Feb	Mar	Apr	May	Jun	Jul	Aug	Sep	Oct	Nov	Dec
# Patient	88	84	84	79	82	82	81	80	81	83	82	83
# Missed Treatments	81	81	79	88	86	69	74	70	88	71	54	78



	Jan	Feb	Mar	Apr	May	Jun	Jul	Aug	Sep	Oct	Nov	Dec
# Patient	88	84	84	79	82	82	81	80	81	83	82	83
# Transplants	0	0	0	0	0	0	0	0	0	0	0	0



Methodology: a) All labs for 'Adequacy of Dialysis', 'Nutrition', 'Osteodystrophy', 'Anemia' and 'Diabetes' based on last value of month; b) BP's and #L processed are average of all values for month; c) Access data takes last access of month; d) Values for SGA and 'Infection Control' use most recent result.