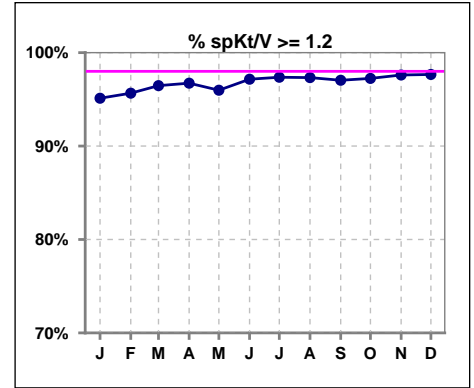
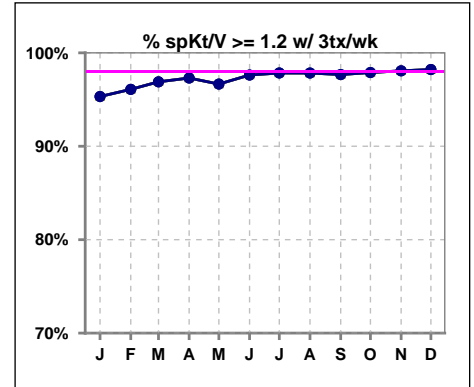


I. ADEQUACY OF DIALYSIS

| | Jan | Feb | Mar | Apr | May | Jun | Jul | Aug | Sep | Oct | Nov | Dec |
|-----------------|------|------|------|------|------|------|------|------|------|------|------|------|
| # spKt/V | 1598 | 1613 | 1613 | 1622 | 1641 | 1618 | 1632 | 1646 | 1623 | 1631 | 1629 | 1627 |
| # spKt/V >= 1.2 | 1520 | 1543 | 1556 | 1569 | 1575 | 1572 | 1589 | 1602 | 1575 | 1586 | 1590 | 1589 |
| Pop. Mean | 1.63 | 1.60 | 1.61 | 1.62 | 1.60 | 1.63 | 1.63 | 1.62 | 1.63 | 1.62 | 1.64 | 1.63 |
| Std. Deviation | 0.34 | 0.31 | 0.30 | 0.31 | 0.31 | 0.32 | 0.31 | 0.31 | 0.32 | 0.30 | 0.31 | 0.32 |
| % spKt/V >= 1.2 | 95% | 96% | 96% | 97% | 96% | 97% | 97% | 97% | 97% | 97% | 98% | 98% |



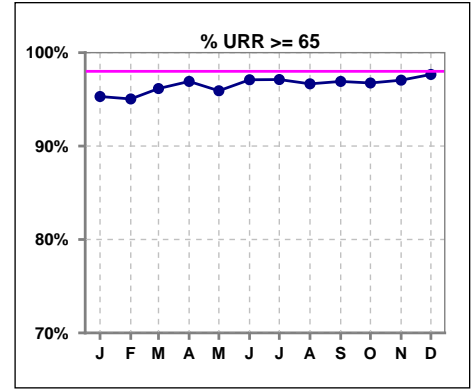
| | Jan | Feb | Mar | Apr | May | Jun | Jul | Aug | Sep | Oct | Nov | Dec |
|--------------------------|------|------|------|------|------|------|------|------|------|------|------|------|
| # spKt/V w/ 3tx/wk | 1476 | 1483 | 1482 | 1484 | 1495 | 1473 | 1484 | 1480 | 1462 | 1470 | 1456 | 1455 |
| # spKt/V >= 1.2 w/3tx/wk | 407 | 425 | 436 | 444 | 445 | 438 | 452 | 448 | 428 | 439 | 428 | 429 |
| Pop. Mean | 1.63 | 1.61 | 1.61 | 1.62 | 1.60 | 1.64 | 1.64 | 1.62 | 1.63 | 1.62 | 1.65 | 1.63 |
| Std. Deviation | 0.34 | 0.31 | 0.30 | 0.31 | 0.30 | 0.32 | 0.31 | 0.31 | 0.32 | 0.29 | 0.31 | 0.31 |
| % >= 1.2 w/3tx/wk | 95% | 96% | 97% | 97% | 97% | 98% | 98% | 98% | 98% | 98% | 98% | 98% |



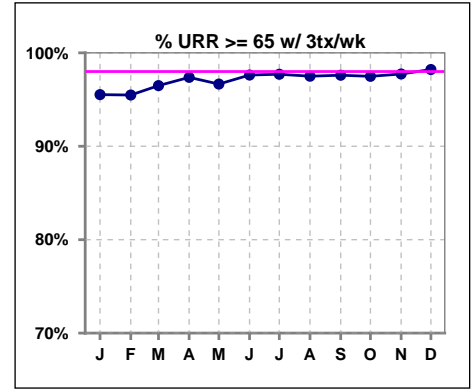
Methodology: a) All labs for 'Adequacy of Dialysis', 'Nutrition', 'Osteodystrophy', 'Anemia' and 'Diabetes' based on last value of month; b) BP's and #L processed are average of all values for month; c) Access data takes last access of month; d) Values for SGA and 'Infection Control' use most recent result.

I. ADEQUACY OF DIALYSIS - CONT.

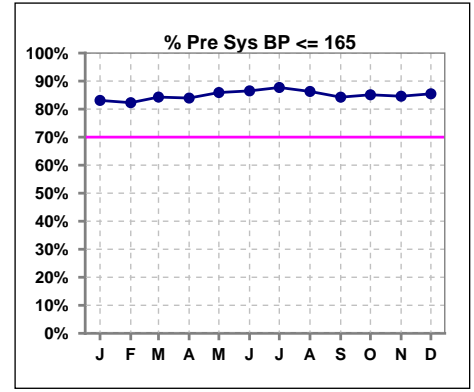
| | Jan | Feb | Mar | Apr | May | Jun | Jul | Aug | Sep | Oct | Nov | Dec |
|-----------------------|------------|------------|------------|------------|------------|------------|------------|------------|------------|------------|------------|------------|
| # URR | 1597 | 1614 | 1613 | 1623 | 1641 | 1618 | 1632 | 1646 | 1622 | 1632 | 1629 | 1626 |
| # URR >= 65 | 1522 | 1534 | 1551 | 1573 | 1574 | 1571 | 1585 | 1591 | 1572 | 1579 | 1581 | 1588 |
| Pop. Mean | 75 | 74 | 74 | 75 | 74 | 75 | 75 | 75 | 75 | 75 | 75 | 75 |
| Std. Deviation | 6.74 | 6.56 | 6.24 | 6.32 | 6.59 | 6.48 | 6.49 | 6.34 | 6.29 | 5.97 | 6.43 | 6.38 |
| % URR >= 65 | 95% | 95% | 96% | 97% | 96% | 97% | 97% | 97% | 97% | 97% | 97% | 98% |



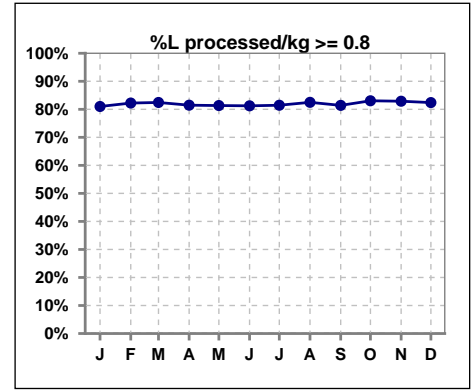
| | Jan | Feb | Mar | Apr | May | Jun | Jul | Aug | Sep | Oct | Nov | Dec |
|-------------------------------|------------|------------|------------|------------|------------|------------|------------|------------|------------|------------|------------|------------|
| # URR w/ 3tx/wk | 1475 | 1484 | 1482 | 1485 | 1495 | 1473 | 1483 | 1480 | 1461 | 1471 | 1456 | 1454 |
| # URR>=65 w/ 3tx/wk | 1409 | 1417 | 1430 | 1446 | 1445 | 1438 | 1449 | 1443 | 1426 | 1434 | 1423 | 1428 |
| Pop. Mean | 75 | 74 | 75 | 75 | 74 | 75 | 75 | 75 | 75 | 75 | 75 | 75 |
| Std. Deviation | 6.66 | 6.49 | 6.17 | 6.10 | 6.29 | 6.41 | 6.26 | 6.13 | 6.05 | 5.75 | 6.11 | 6.17 |
| % URR>=65 w/ 3tx/wk | 96% | 95% | 96% | 97% | 97% | 98% | 98% | 98% | 98% | 97% | 98% | 98% |



| | Jan | Feb | Mar | Apr | May | Jun | Jul | Aug | Sep | Oct | Nov | Dec |
|-------------------------------|------------|------------|------------|------------|------------|------------|------------|------------|------------|------------|------------|------------|
| # Pre Sys BP | 1604 | 1621 | 1624 | 1626 | 1647 | 1631 | 1637 | 1650 | 1627 | 1633 | 1636 | 1644 |
| # Pre Sys BP <= 165 | 1350 | 1356 | 1388 | 1384 | 1432 | 1424 | 1452 | 1445 | 1393 | 1408 | 1406 | 1421 |
| Pop. Mean | 145 | 146 | 145 | 145 | 143 | 144 | 143 | 143 | 144 | 145 | 145 | 144 |
| Std. Deviation | 19.6 | 20.0 | 19.9 | 20.0 | 19.7 | 19.7 | 19.3 | 19.4 | 19.4 | 19.2 | 19.4 | 19.7 |
| % Pre Sys BP <= 165 | 83% | 82% | 84% | 84% | 86% | 87% | 88% | 86% | 84% | 85% | 85% | 85% |



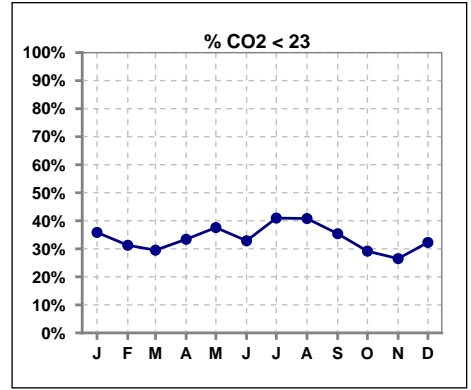
| | Jan | Feb | Mar | Apr | May | Jun | Jul | Aug | Sep | Oct | Nov | Dec |
|-----------------------------------|------------|------------|------------|------------|------------|------------|------------|------------|------------|------------|------------|------------|
| # L processed/kg | 1601 | 1616 | 1618 | 1625 | 1646 | 1632 | 1634 | 1651 | 1629 | 1634 | 1636 | 1642 |
| # L processed/kg >= 0.8 | 1297 | 1329 | 1334 | 1324 | 1339 | 1326 | 1331 | 1362 | 1326 | 1357 | 1356 | 1353 |
| Pop. Mean | 1 | 1 | 1 | 1 | 1 | 1 | 1 | 1 | 1 | 1 | 1 | 1 |
| Std. Deviation | 0.3 | 0.3 | 0.3 | 0.4 | 0.3 | 0.3 | 0.3 | 0.3 | 0.3 | 0.3 | 0.3 | 0.3 |
| % L processed/kg >= 0.8 | 81% | 82% | 82% | 81% | 81% | 81% | 81% | 82% | 81% | 83% | 83% | 82% |



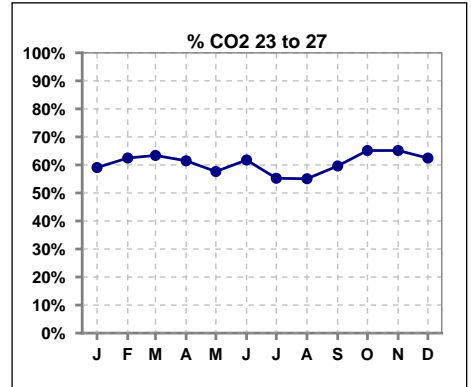
Methodology: a) All labs for 'Adequacy of Dialysis', 'Nutrition', 'Osteodystrophy', 'Anemia' and 'Diabetes' based on last value of month; b) BP's and #L processed are average of all values for month; c) Access data takes last access of month; d) Values for SGA and 'Infection Control' use most recent result.

I. ADEQUACY OF DIALYSIS - CONT.

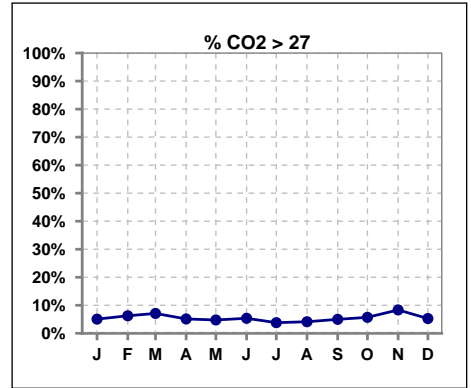
| | Jan | Feb | Mar | Apr | May | Jun | Jul | Aug | Sep | Oct | Nov | Dec |
|----------------------|------------|------------|------------|------------|------------|------------|------------|------------|------------|------------|------------|------------|
| # CO2 | 1598 | 1615 | 1620 | 1620 | 1639 | 1622 | 1633 | 1647 | 1625 | 1632 | 1630 | 1630 |
| # CO2 < 23 | 573 | 505 | 478 | 541 | 616 | 533 | 669 | 672 | 575 | 476 | 432 | 526 |
| Pop. Mean | 23 | 24 | 24 | 23 | 23 | 23 | 23 | 23 | 23 | 24 | 24 | 24 |
| Std. Deviation | 2.79 | 2.73 | 2.75 | 2.68 | 2.75 | 2.61 | 2.73 | 2.75 | 2.66 | 2.67 | 2.72 | 2.61 |
| % CO2 < 23 | 36% | 31% | 30% | 33% | 38% | 33% | 41% | 41% | 35% | 29% | 27% | 32% |



| | Jan | Feb | Mar | Apr | May | Jun | Jul | Aug | Sep | Oct | Nov | Dec |
|-----------------------|------------|------------|------------|------------|------------|------------|------------|------------|------------|------------|------------|------------|
| # CO2 | 1598 | 1615 | 1620 | 1620 | 1639 | 1622 | 1633 | 1647 | 1625 | 1632 | 1630 | 1630 |
| # CO2 23 to 27 | 944 | 1009 | 1027 | 996 | 945 | 1002 | 902 | 907 | 969 | 1063 | 1062 | 1018 |
| Pop. Mean | 23 | 24 | 24 | 23 | 23 | 23 | 23 | 23 | 23 | 24 | 24 | 24 |
| Std. Deviation | 2.79 | 2.73 | 2.75 | 2.68 | 2.75 | 2.61 | 2.73 | 2.75 | 2.66 | 2.67 | 2.72 | 2.61 |
| % CO2 23 to 27 | 59% | 62% | 63% | 61% | 58% | 62% | 55% | 55% | 60% | 65% | 65% | 62% |



| | Jan | Feb | Mar | Apr | May | Jun | Jul | Aug | Sep | Oct | Nov | Dec |
|----------------------|-----------|-----------|-----------|-----------|-----------|-----------|-----------|-----------|-----------|-----------|-----------|-----------|
| # CO2 | 1598 | 1615 | 1620 | 1620 | 1639 | 1622 | 1633 | 1647 | 1625 | 1632 | 1630 | 1630 |
| # CO2 > 27 | 81 | 101 | 115 | 83 | 78 | 87 | 62 | 68 | 81 | 93 | 136 | 86 |
| Pop. Mean | 23 | 24 | 24 | 23 | 23 | 23 | 23 | 23 | 23 | 24 | 24 | 24 |
| Std. Deviation | 2.79 | 2.73 | 2.75 | 2.68 | 2.75 | 2.61 | 2.73 | 2.75 | 2.66 | 2.67 | 2.72 | 2.61 |
| % CO2 > 27 | 5% | 6% | 7% | 5% | 5% | 5% | 4% | 4% | 5% | 6% | 8% | 5% |



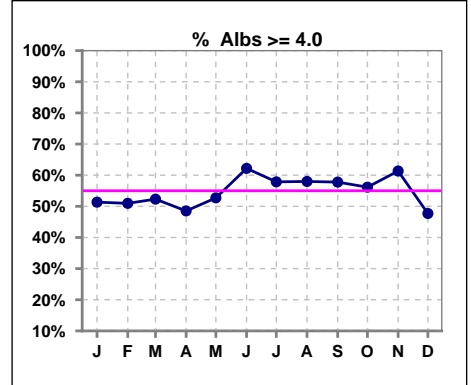
Methodology: a) All labs for 'Adequacy of Dialysis', 'Nutrition', 'Osteodystrophy', 'Anemia' and 'Diabetes' based on last value of month; b) BP's and #L processed are average of all values for month; c) Access data takes last access of month; d) Values for SGA and 'Infection Control' use most recent result.

Northwest Kidney Centers - Consolidated Center
Quality Assurance Reports
 Through period ending Dec. 31, 2023

*Albumin values use BCG method - as of July 2001

II. NUTRITION

| | Jan | Feb | Mar | Apr | May | Jun | Jul | Aug | Sep | Oct | Nov | Dec |
|------------------|------|------|------|------|------|------|------|------|------|------|------|------|
| # Albumin | 1599 | 1615 | 1619 | 1622 | 1639 | 1624 | 1635 | 1647 | 1625 | 1633 | 1632 | 1631 |
| # Albumin >= 4.0 | 821 | 823 | 847 | 787 | 864 | 1010 | 946 | 955 | 939 | 917 | 1001 | 778 |
| Pop. Mean | 3.9 | 3.9 | 3.9 | 3.9 | 3.9 | 4.0 | 4.0 | 4.0 | 4.0 | 3.9 | 4.0 | 3.9 |
| Std. Deviation | 0.37 | 0.37 | 0.38 | 0.36 | 0.37 | 0.38 | 0.38 | 0.38 | 0.39 | 0.38 | 0.40 | 0.38 |
| % Alb >= 4.0 | 51% | 51% | 52% | 49% | 53% | 62% | 58% | 58% | 58% | 56% | 61% | 48% |

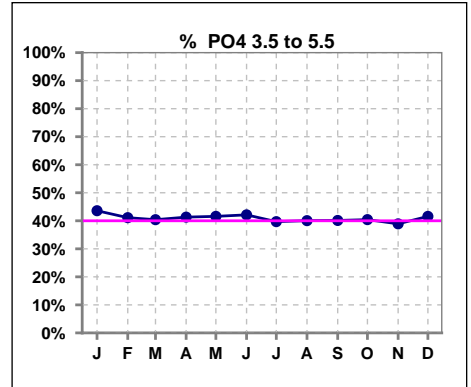


Methodology: a) All labs for 'Adequacy of Dialysis', 'Nutrition', 'Osteodystrophy', 'Anemia' and 'Diabetes' based on last value of month; b) BP's and #L processed are average of all values for month; c) Access data takes last access of month; d) Values for SGA and 'Infection Control' use most recent result.

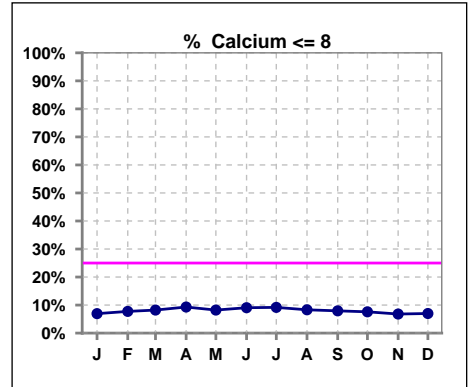
Lab methodology for PTH changed January 2012

III. OSTEODYSTROPHY

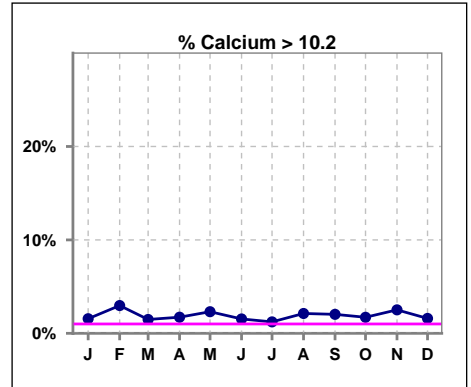
| | Jan | Feb | Mar | Apr | May | Jun | Jul | Aug | Sep | Oct | Nov | Dec |
|------------------|------|------|------|------|------|------|------|------|------|------|------|------|
| # PO4 | 1599 | 1615 | 1619 | 1622 | 1640 | 1624 | 1635 | 1648 | 1625 | 1633 | 1632 | 1631 |
| # PO4 3.5 to 5.5 | 697 | 664 | 654 | 670 | 682 | 684 | 649 | 660 | 652 | 660 | 635 | 678 |
| Pop. Mean | 5.9 | 5.9 | 5.9 | 5.8 | 5.9 | 5.9 | 6.0 | 6.0 | 5.8 | 5.9 | 6.0 | 5.8 |
| Std. Deviation | 1.88 | 1.91 | 1.93 | 1.87 | 1.89 | 1.84 | 1.87 | 1.96 | 1.88 | 2.03 | 1.94 | 1.91 |
| % PO4 3.5 to 5.5 | 44% | 41% | 40% | 41% | 42% | 42% | 40% | 40% | 40% | 40% | 39% | 42% |



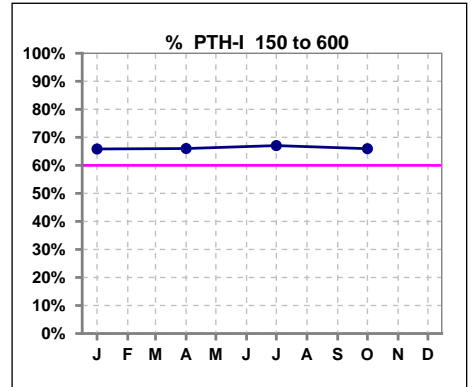
| | Jan | Feb | Mar | Apr | May | Jun | Jul | Aug | Sep | Oct | Nov | Dec |
|----------------|------|------|------|------|------|------|------|------|------|------|------|------|
| # Calcium | 1600 | 1615 | 1620 | 1623 | 1643 | 1624 | 1635 | 1648 | 1626 | 1633 | 1633 | 1632 |
| # Calcium <= 8 | 111 | 125 | 133 | 151 | 135 | 147 | 150 | 137 | 129 | 124 | 111 | 114 |
| Pop. Mean | 9.1 | 9.1 | 9.0 | 9.0 | 9.0 | 9.0 | 9.0 | 9.0 | 9.0 | 9.1 | 9.2 | 9.1 |
| Std. Deviation | 0.69 | 0.72 | 0.71 | 0.71 | 0.72 | 0.73 | 0.71 | 0.69 | 0.71 | 0.70 | 0.73 | 0.69 |
| % Calcium <= 8 | 7% | 8% | 8% | 9% | 8% | 9% | 9% | 8% | 8% | 8% | 7% | 7% |



| | Jan | Feb | Mar | Apr | May | Jun | Jul | Aug | Sep | Oct | Nov | Dec |
|------------------|------|------|------|------|------|------|------|------|------|------|------|------|
| # Calcium | 1600 | 1615 | 1620 | 1623 | 1643 | 1624 | 1635 | 1648 | 1626 | 1633 | 1633 | 1632 |
| # Calcium > 10.2 | 25 | 48 | 24 | 28 | 38 | 25 | 20 | 35 | 33 | 28 | 41 | 26 |
| Pop. Mean | 9.1 | 9.1 | 9.0 | 9.0 | 9.0 | 9.0 | 9.0 | 9.0 | 9.0 | 9.1 | 9.2 | 9.1 |
| Std. Deviation | 0.69 | 0.72 | 0.71 | 0.71 | 0.72 | 0.73 | 0.71 | 0.69 | 0.71 | 0.70 | 0.73 | 0.69 |
| % Calcium > 10.2 | 2% | 3% | 1% | 2% | 2% | 2% | 1% | 2% | 2% | 2% | 3% | 2% |



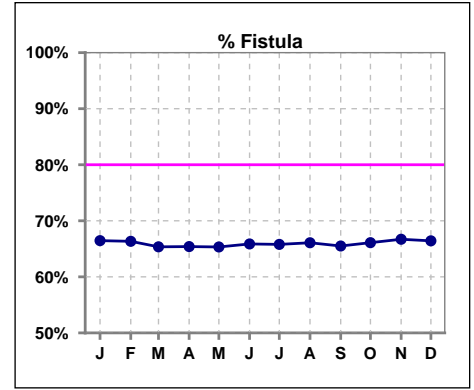
| | Jan | Feb | Mar | Apr | May | Jun | Jul | Aug | Sep | Oct | Nov | Dec |
|--------------------|------|-----|-----|------|-----|-----|------|-----|-----|------|-----|-----|
| # PTH-I | 1593 | | | 1618 | | | 1630 | | | 1627 | | |
| # PTH-I 150 to 600 | 1049 | | | 1068 | | | 1093 | | | 1073 | | |
| Pop. Mean | 494 | | | 483 | | | 467 | | | 455 | | |
| Std. Deviation | 460 | | | 473 | | | 436 | | | 430 | | |
| % PTH-I 150 to 600 | 66% | | | 66% | | | 67% | | | 66% | | |



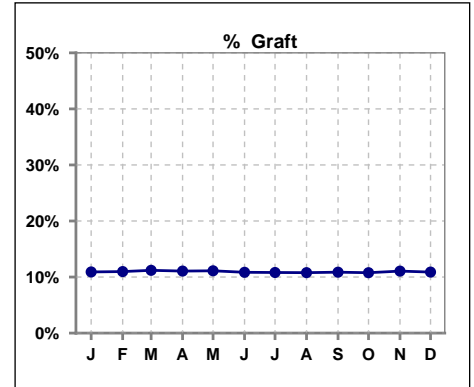
Methodology: a) All labs for 'Adequacy of Dialysis', 'Nutrition', 'Osteodystrophy', 'Anemia' and 'Diabetes' based on last value of month; b) BP's and #L processed are average of all values for month; c) Access data takes last access of month; d) Values for SGA and 'Infection Control' use most recent result.

IV. ACCESS

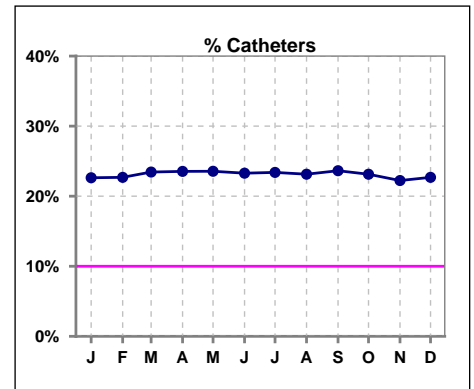
| | Jan | Feb | Mar | Apr | May | Jun | Jul | Aug | Sep | Oct | Nov | Dec |
|------------------|------|------|------|------|------|------|------|------|------|------|------|------|
| # Access | 1604 | 1622 | 1625 | 1627 | 1647 | 1632 | 1637 | 1651 | 1629 | 1634 | 1637 | 1644 |
| # Fistula | 1066 | 1076 | 1062 | 1064 | 1076 | 1075 | 1077 | 1091 | 1067 | 1080 | 1092 | 1092 |
| % Fistula | 66% | 66% | 65% | 65% | 65% | 66% | 66% | 66% | 66% | 66% | 67% | 66% |



| | Jan | Feb | Mar | Apr | May | Jun | Jul | Aug | Sep | Oct | Nov | Dec |
|-----------------|------|------|------|------|------|------|------|------|------|------|------|------|
| # Access | 1604 | 1622 | 1625 | 1627 | 1647 | 1632 | 1637 | 1651 | 1629 | 1634 | 1637 | 1644 |
| # Graft | 175 | 178 | 182 | 180 | 183 | 177 | 177 | 178 | 177 | 176 | 181 | 179 |
| % Graft | 11% | 11% | 11% | 11% | 11% | 11% | 11% | 11% | 11% | 11% | 11% | 11% |



| | Jan | Feb | Mar | Apr | May | Jun | Jul | Aug | Sep | Oct | Nov | Dec |
|--------------------|------|------|------|------|------|------|------|------|------|------|------|------|
| # Access | 1604 | 1622 | 1625 | 1627 | 1647 | 1632 | 1637 | 1651 | 1629 | 1634 | 1637 | 1644 |
| # Catheters | 363 | 368 | 381 | 383 | 388 | 380 | 383 | 382 | 385 | 378 | 364 | 373 |
| % Catheters | 23% | 23% | 23% | 24% | 24% | 23% | 23% | 23% | 24% | 23% | 22% | 23% |



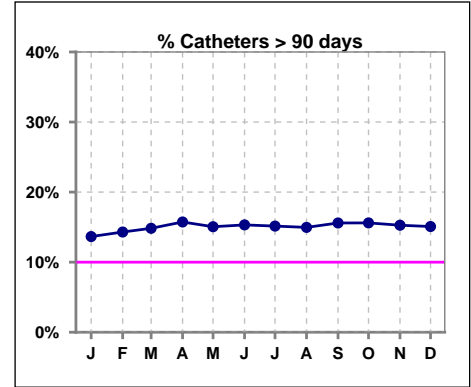
Methodology: a) All labs for 'Adequacy of Dialysis', 'Nutrition', 'Osteodystrophy', 'Anemia' and 'Diabetes' based on last value of month; b) BP's and #L processed are average of all values for month; c) Access data takes last access of month; d) Values for SGA and 'Infection Control' use most recent result.

IV. ACCESS - CONT.

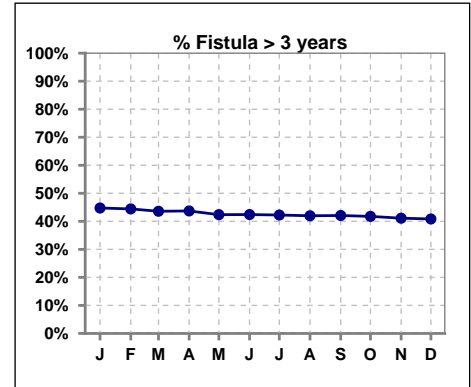
Catheters > 90 days

| | Jan | Feb | Mar | Apr | May | Jun | Jul | Aug | Sep | Oct | Nov | Dec |
|--------------------|------|------|------|------|------|------|------|------|------|------|------|------|
| # Access | 1604 | 1622 | 1625 | 1627 | 1647 | 1632 | 1637 | 1651 | 1629 | 1634 | 1637 | 1644 |
| # Catheters | 219 | 232 | 241 | 256 | 248 | 250 | 248 | 247 | 254 | 255 | 250 | 248 |
| % Catheters | 14% | 14% | 15% | 16% | 15% | 15% | 15% | 15% | 16% | 16% | 15% | 15% |

Definition: Catheter in use on last treatment of the month



| | Jan | Feb | Mar | Apr | May | Jun | Jul | Aug | Sep | Oct | Nov | Dec |
|-----------------------------|------|------|------|------|------|------|------|------|------|------|------|------|
| # Fistula | 1066 | 1076 | 1062 | 1064 | 1076 | 1075 | 1077 | 1091 | 1067 | 1080 | 1092 | 1092 |
| # Fistula > 3 yrs | 477 | 478 | 463 | 465 | 456 | 456 | 455 | 458 | 449 | 451 | 449 | 446 |
| % Fistula > 3 yrs | 45% | 44% | 44% | 44% | 42% | 42% | 42% | 42% | 42% | 42% | 41% | 41% |

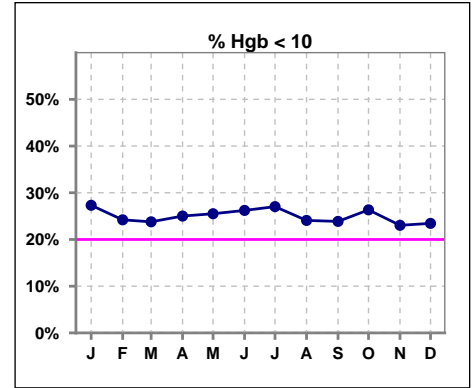


Methodology: a) All labs for 'Adequacy of Dialysis', 'Nutrition', 'Osteodystrophy', 'Anemia' and 'Diabetes' based on last value of month; b) BP's and #L processed are average of all values for month; c) Access data takes last access of month; d) Values for SGA and 'Infection Control' use most recent result.

V. ANEMIA

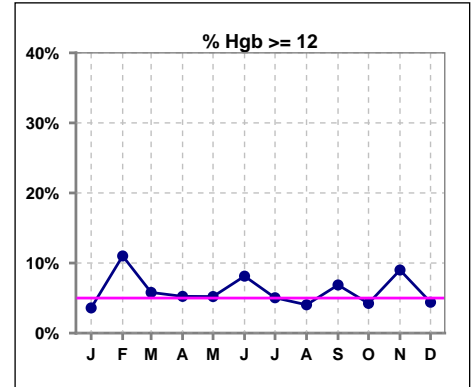
| | Jan | Feb | Mar | Apr | May | Jun | Jul | Aug | Sep | Oct | Nov | Dec |
|----------------|------|------|------|------|------|------|------|------|------|------|------|------|
| # Hgb | 1391 | 1417 | 1396 | 1431 | 1419 | 1415 | 1428 | 1412 | 1412 | 1439 | 1411 | 1386 |
| # Hgb < 10 | 380 | 343 | 332 | 358 | 362 | 371 | 386 | 340 | 337 | 379 | 325 | 325 |
| Pop. Mean | 10.4 | 10.7 | 10.6 | 10.6 | 10.5 | 10.5 | 10.5 | 10.5 | 10.6 | 10.5 | 10.7 | 10.6 |
| Std. Deviation | 1.2 | 1.3 | 1.2 | 1.2 | 1.2 | 1.3 | 1.2 | 1.2 | 1.3 | 1.3 | 1.3 | 1.2 |
| % Hgb < 10 | 27% | 24% | 24% | 25% | 26% | 26% | 27% | 24% | 24% | 26% | 23% | 23% |

Note: Excludes patients who received no ESA in month.



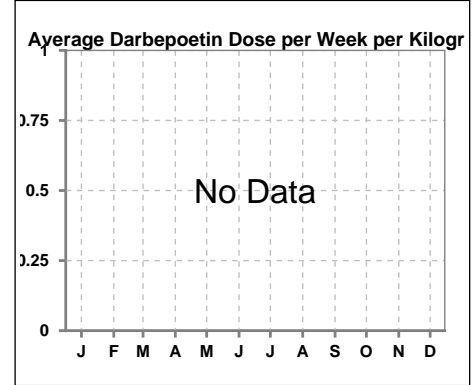
| | Jan | Feb | Mar | Apr | May | Jun | Jul | Aug | Sep | Oct | Nov | Dec |
|----------------|------|------|------|------|------|------|------|------|------|------|------|------|
| # Hgb | 1391 | 1417 | 1396 | 1431 | 1419 | 1415 | 1428 | 1412 | 1412 | 1439 | 1411 | 1386 |
| # Hgb >= 12 | 50 | 156 | 81 | 75 | 74 | 115 | 72 | 57 | 97 | 61 | 127 | 61 |
| Pop. Mean | 10.4 | 10.7 | 10.6 | 10.6 | 10.5 | 10.5 | 10.5 | 10.5 | 10.6 | 10.5 | 10.7 | 10.6 |
| Std. Deviation | 1.2 | 1.3 | 1.2 | 1.2 | 1.2 | 1.3 | 1.2 | 1.2 | 1.3 | 1.3 | 1.3 | 1.2 |
| % Hgb >= 12 | 4% | 11% | 6% | 5% | 5% | 8% | 5% | 4% | 7% | 4% | 9% | 4% |

Note: Excludes patients who received no ESA in month.



Average Darbepoetin Dose per Week per Kilogram

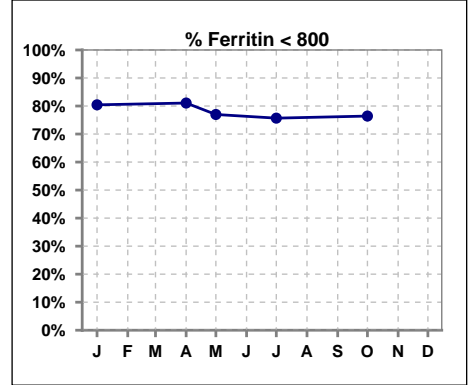
| | Jan | Feb | Mar | Apr | May | Jun | Jul | Aug | Sep | Oct | Nov | Dec |
|-----------------------|-----|-----|-----|-----|-----|-----|-----|-----|-----|-----|-----|-----|
| # Average Darbepoetin | | | | | | | | | | | | |



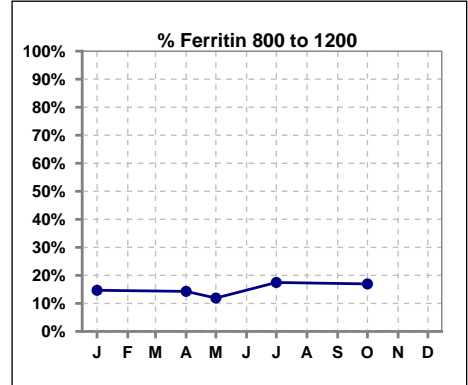
V. ANEMIA - CONT.

Iron Profile

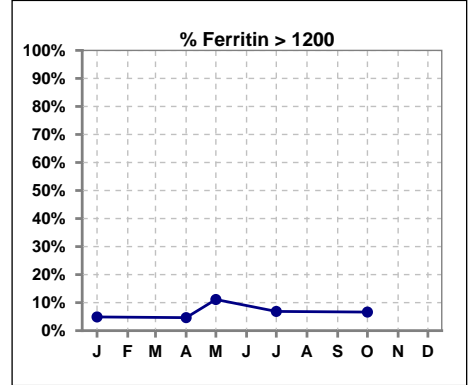
| | Jan | Feb | Mar | Apr | May | Jun | Jul | Aug | Sep | Oct | Nov | Dec |
|----------------------------|------------|-----|-----|------------|------------|-----|------------|-----|-----|------------|-----|-----|
| # Ferritin | 1594 | | | 1616 | 126 | | 1632 | | | 1628 | | |
| # Ferritin < 800 | 1282 | | | 1310 | 97 | | 1235 | | | 1244 | | |
| Pop. Mean | 513 | | | 509 | 508 | | 558 | | | 552 | | |
| Std. Deviation | 481 | | | 404 | 437 | | 435 | | | 396 | | |
| % Ferritin < 800 | 80% | | | 81% | 77% | | 76% | | | 76% | | |



| | Jan | Feb | Mar | Apr | May | Jun | Jul | Aug | Sep | Oct | Nov | Dec |
|-------------------------------|------------|-----|-----|------------|------------|-----|------------|-----|-----|------------|-----|-----|
| # Ferritin | 1594 | | | 1616 | 126 | | 1632 | | | 1628 | | |
| # Ferritin 800 to 1200 | 234 | | | 231 | 15 | | 285 | | | 276 | | |
| Pop. Mean | 513 | | | 509 | 508 | | 558 | | | 552 | | |
| Std. Deviation | 481 | | | 404 | 437 | | 435 | | | 396 | | |
| % Ferritin 800 to 1200 | 15% | | | 14% | 12% | | 17% | | | 17% | | |



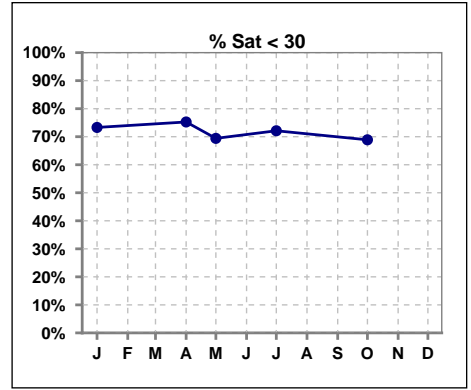
| | Jan | Feb | Mar | Apr | May | Jun | Jul | Aug | Sep | Oct | Nov | Dec |
|-----------------------------|-----------|-----|-----|-----------|------------|-----|-----------|-----|-----|-----------|-----|-----|
| # Ferritin | 1594 | | | 1616 | 126 | | 1632 | | | 1628 | | |
| # Ferritin > 1200 | 78 | | | 75 | 14 | | 112 | | | 108 | | |
| Pop. Mean | 513 | | | 509 | 508 | | 558 | | | 552 | | |
| Std. Deviation | 481 | | | 404 | 437 | | 435 | | | 396 | | |
| % Ferritin > 1200 | 5% | | | 5% | 11% | | 7% | | | 7% | | |



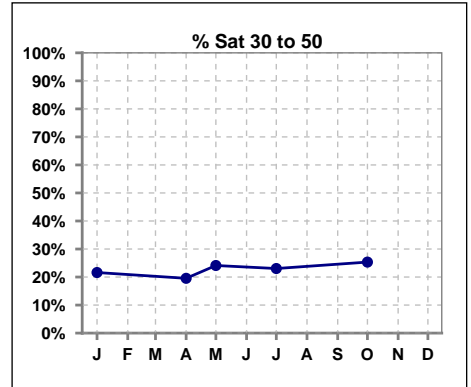
Methodology: a) All labs for 'Adequacy of Dialysis', 'Nutrition', 'Osteodystrophy', 'Anemia' and 'Diabetes' based on last value of month; b) BP's and #L processed are average of all values for month; c) Access data takes last access of month; d) Values for SGA and 'Infection Control' use most recent result.

V. ANEMIA - CONT.

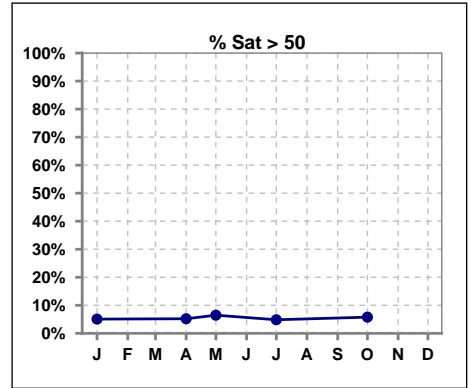
| | Jan | Feb | Mar | Apr | May | Jun | Jul | Aug | Sep | Oct | Nov | Dec |
|------------------------|------------|-----|-----|------------|------------|-----|------------|-----|-----|------------|-----|-----|
| # % Sat | 1596 | | | 1617 | 170 | | 1632 | | | 1630 | | |
| # % Sat < 30 | 1170 | | | 1217 | 118 | | 1177 | | | 1123 | | |
| Pop. Mean | 25 | | | 25 | 25 | | 25 | | | 27 | | |
| Std. Deviation | 15 | | | 14 | 14 | | 14 | | | 15 | | |
| % % Sat < 30 | 73% | | | 75% | 69% | | 72% | | | 69% | | |



| | Jan | Feb | Mar | Apr | May | Jun | Jul | Aug | Sep | Oct | Nov | Dec |
|-------------------------|------------|-----|-----|------------|------------|-----|------------|-----|-----|------------|-----|-----|
| # % Sat | 1596 | | | 1617 | 170 | | 1632 | | | 1630 | | |
| # % Sat 30 to 50 | 345 | | | 316 | 41 | | 376 | | | 413 | | |
| Pop. Mean | 25 | | | 25 | 25 | | 25 | | | 27 | | |
| Std. Deviation | 15 | | | 14 | 14 | | 14 | | | 15 | | |
| % % Sat 30 to 50 | 22% | | | 20% | 24% | | 23% | | | 25% | | |



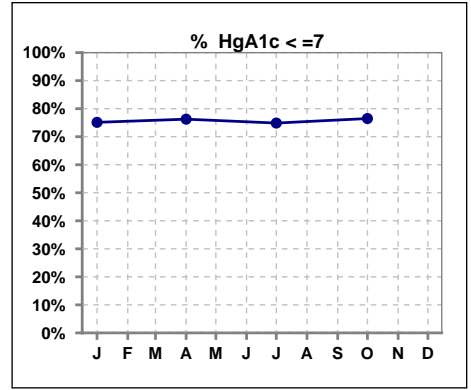
| | Jan | Feb | Mar | Apr | May | Jun | Jul | Aug | Sep | Oct | Nov | Dec |
|------------------------|-----------|-----|-----|-----------|-----------|-----|-----------|-----|-----|-----------|-----|-----|
| # % Sat | 1596 | | | 1617 | 170 | | 1632 | | | 1630 | | |
| # % Sat > 50 | 81 | | | 84 | 11 | | 79 | | | 94 | | |
| Pop. Mean | 25 | | | 25 | 25 | | 25 | | | 27 | | |
| Std. Deviation | 15 | | | 14 | 14 | | 14 | | | 15 | | |
| % % Sat > 50 | 5% | | | 5% | 6% | | 5% | | | 6% | | |



Methodology: a) All labs for 'Adequacy of Dialysis', 'Nutrition', 'Osteodystrophy', 'Anemia' and 'Diabetes' based on last value of month; b) BP's and #L processed are average of all values for month; c) Access data takes last access of month; d) Values for SGA and 'Infection Control' use most recent result.

VI. Diabetes

| | Jan | Feb | Mar | Apr | May | Jun | Jul | Aug | Sep | Oct | Nov | Dec |
|------------------------|------------|-----|-----|------------|-----|-----|------------|-----|-----|------------|-----|-----|
| # HgA1c | 973 | | | 990 | | | 971 | | | 974 | | |
| # HgA1c <= 7 | 731 | | | 755 | | | 727 | | | 745 | | |
| Pop. Mean | 6.4 | | | 6.3 | | | 6.4 | | | 6.3 | | |
| Std. Deviation | 1.56 | | | 1.51 | | | 1.52 | | | 1.46 | | |
| % HgA1c <= 7 | 75% | | | 76% | | | 75% | | | 76% | | |

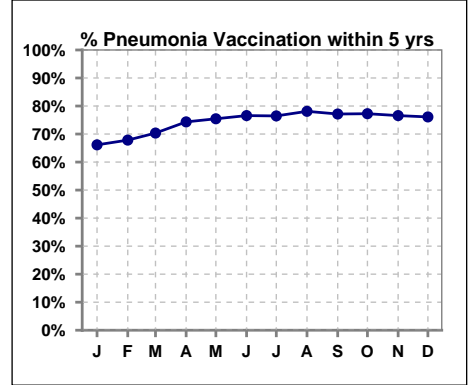


Methodology: a) All labs for 'Adequacy of Dialysis', 'Nutrition', 'Osteodystrophy', 'Anemia' and 'Diabetes' based on last value of month; b) BP's and #L processed are average of all values for month; c) Access data takes last access of month; d) Values for SGA and 'Infection Control' use most recent result.

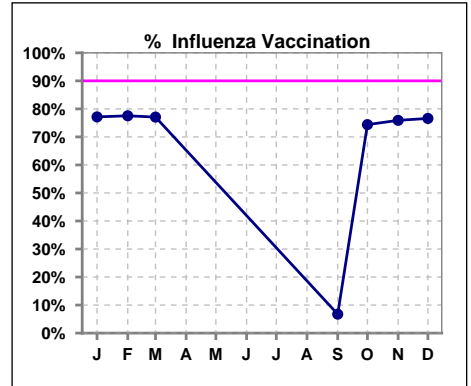
VII. Infection Control

Pneumonia vaccination within the past five years

| | Jan | Feb | Mar | Apr | May | Jun | Jul | Aug | Sep | Oct | Nov | Dec |
|--------------------|------|------|------|------|------|------|------|------|------|------|------|------|
| # Patient | 1610 | 1629 | 1636 | 1633 | 1658 | 1644 | 1649 | 1658 | 1641 | 1640 | 1644 | 1649 |
| # Pneumonia | 1065 | 1105 | 1151 | 1214 | 1251 | 1259 | 1261 | 1295 | 1266 | 1267 | 1259 | 1255 |
| % Pneumonia | 66% | 68% | 70% | 74% | 75% | 77% | 76% | 78% | 77% | 77% | 77% | 76% |



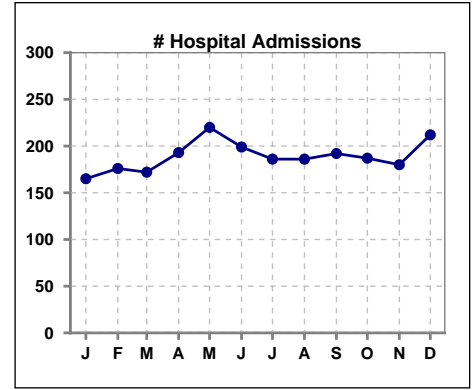
| | Jan | Feb | Mar | Apr | May | Jun | Jul | Aug | Sep | Oct | Nov | Dec |
|--------------------|------|------|------|-----|-----|-----|-----|-----|------|------|------|------|
| # Patient | 1610 | 1629 | 1636 | | | | | | 1641 | 1640 | 1644 | 1649 |
| # Influenza | 1242 | 1263 | 1261 | | | | | | 111 | 1220 | 1248 | 1263 |
| % Influenza | 77% | 78% | 77% | | | | | | 7% | 74% | 76% | 77% |



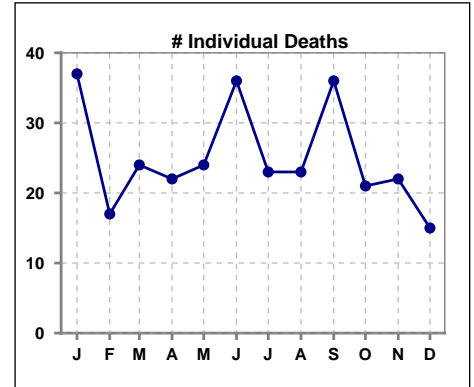
Methodology: a) All labs for 'Adequacy of Dialysis', 'Nutrition', 'Osteodystrophy', 'Anemia' and 'Diabetes' based on last value of month; b) BP's and #L processed are average of all values for month; c) Access data takes last access of month; d) Values for SGA and 'Infection Control' use most recent result.

VIII. Outcome measures

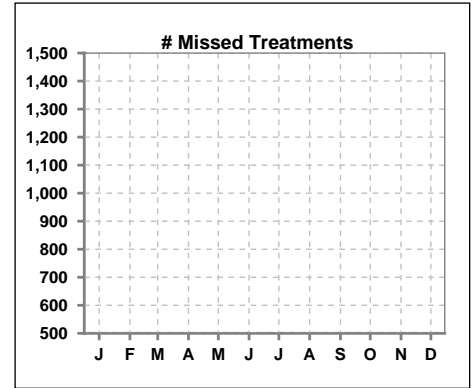
| | Jan | Feb | Mar | Apr | May | Jun | Jul | Aug | Sep | Oct | Nov | Dec |
|------------------------------|------|------|------|------|------|------|------|------|------|------|------|------|
| # Patient | 1610 | 1629 | 1636 | 1633 | 1658 | 1644 | 1649 | 1658 | 1641 | 1640 | 1644 | 1649 |
| # Hospital Admissions | 165 | 176 | 172 | 193 | 220 | 199 | 186 | 186 | 192 | 187 | 180 | 212 |



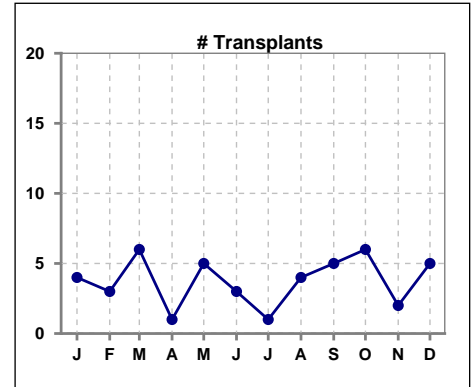
| | Jan | Feb | Mar | Apr | May | Jun | Jul | Aug | Sep | Oct | Nov | Dec |
|----------------------------|------|------|------|------|------|------|------|------|------|------|------|------|
| # Patient | 1610 | 1629 | 1636 | 1633 | 1658 | 1644 | 1649 | 1658 | 1641 | 1640 | 1644 | 1649 |
| # Individual Deaths | 37 | 17 | 24 | 22 | 24 | 36 | 23 | 23 | 36 | 21 | 22 | 15 |



| | Jan | Feb | Mar | Apr | May | Jun | Jul | Aug | Sep | Oct | Nov | Dec |
|----------------------------|------|------|------|------|------|------|------|------|------|------|------|------|
| # Patient | 1610 | 1629 | 1636 | 1633 | 1658 | 1644 | 1649 | 1658 | 1641 | 1640 | 1644 | 1649 |
| # Missed Treatments | 1845 | 1729 | 1991 | 1900 | 2107 | 1904 | 1777 | 1911 | 1951 | 1838 | 1939 | 2063 |



| | Jan | Feb | Mar | Apr | May | Jun | Jul | Aug | Sep | Oct | Nov | Dec |
|----------------------|------|------|------|------|------|------|------|------|------|------|------|------|
| # Patient | 1610 | 1629 | 1636 | 1633 | 1658 | 1644 | 1649 | 1658 | 1641 | 1640 | 1644 | 1649 |
| # Transplants | 4 | 3 | 6 | 1 | 5 | 3 | 1 | 4 | 5 | 6 | 2 | 5 |



Methodology: a) All labs for 'Adequacy of Dialysis', 'Nutrition', 'Osteodystrophy', 'Anemia' and 'Diabetes' based on last value of month; b) BP's and #L processed are average of all values for month; c) Access data takes last access of month; d) Values for SGA and 'Infection Control' use most recent result.