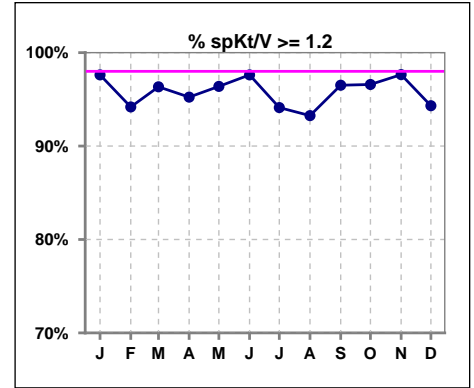
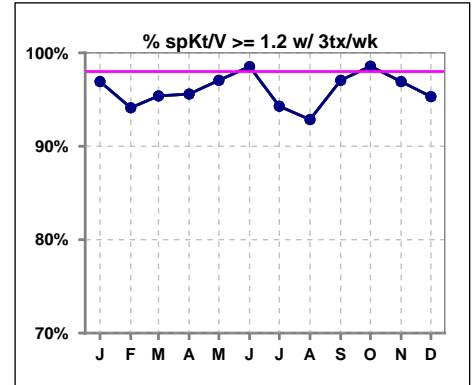


I. ADEQUACY OF DIALYSIS

	Jan	Feb	Mar	Apr	May	Jun	Jul	Aug	Sep	Oct	Nov	Dec
# spKt/V	84	86	82	84	83	84	85	89	86	88	85	88
# spKt/V >= 1.2	82	81	79	80	80	82	80	83	83	85	83	83
Pop. Mean	1.74	1.66	1.67	1.64	1.63	1.64	1.64	1.64	1.63	1.59	1.66	1.62
Std. Deviation	0.34	0.33	0.31	0.33	0.29	0.29	0.31	0.34	0.32	0.31	0.28	0.29
% spKt/V >= 1.2	98%	94%	96%	95%	96%	98%	94%	93%	97%	97%	98%	94%

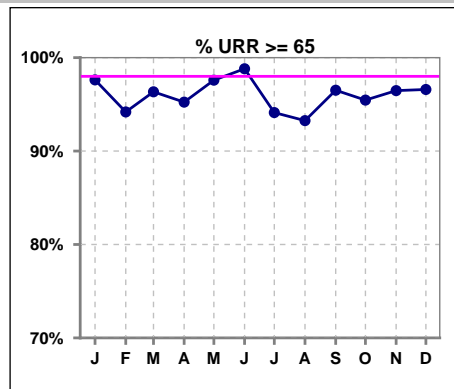


	Jan	Feb	Mar	Apr	May	Jun	Jul	Aug	Sep	Oct	Nov	Dec
# spKt/V w/ 3tx/wk	65	68	65	68	68	68	70	70	68	70	65	64
# spKt/V >= 1.2 w/3tx/wk	63	64	62	65	66	67	66	65	66	69	63	61
Pop. Mean	1.74	1.65	1.65	1.65	1.63	1.63	1.62	1.61	1.60	1.58	1.64	1.60
Std. Deviation	0.35	0.34	0.33	0.33	0.27	0.27	0.29	0.33	0.31	0.31	0.28	0.27
% >= 1.2 w/3tx/wk	97%	94%	95%	96%	97%	99%	94%	93%	97%	99%	97%	95%

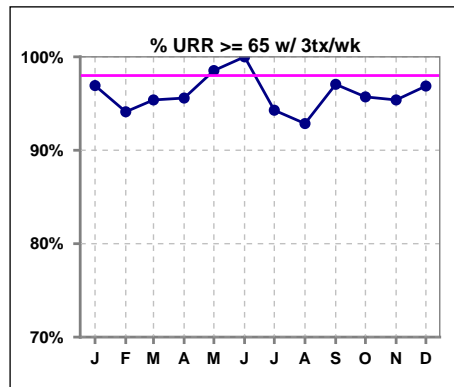


I. ADEQUACY OF DIALYSIS - CONT.

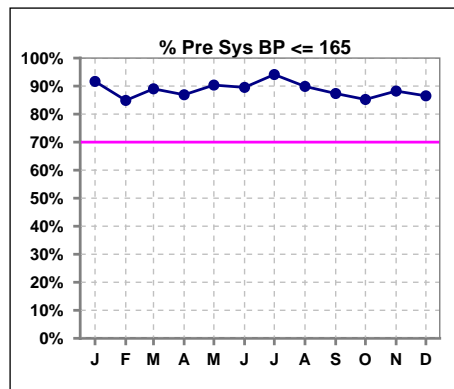
	Jan	Feb	Mar	Apr	May	Jun	Jul	Aug	Sep	Oct	Nov	Dec
# URR	84	86	82	84	83	84	85	89	86	88	85	88
# URR >= 65	82	81	79	80	81	83	80	83	83	84	82	85
Pop. Mean	77	75	76	75	75	75	75	75	75	74	76	75
Std. Deviation	6.30	7.74	5.91	7.29	5.96	5.81	6.24	6.64	7.10	6.10	5.55	5.93
% URR >= 65	98%	94%	96%	95%	98%	99%	94%	93%	97%	95%	96%	97%



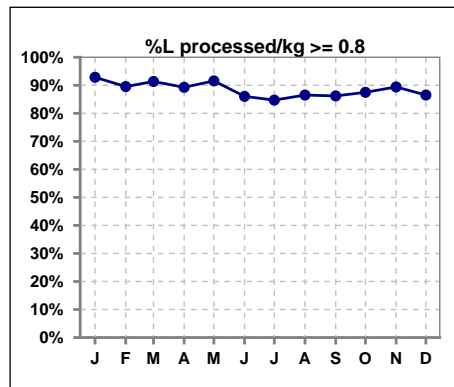
	Jan	Feb	Mar	Apr	May	Jun	Jul	Aug	Sep	Oct	Nov	Dec
# URR w/ 3tx/wk	65	68	65	68	68	68	70	70	68	70	65	64
# URR>=65 w/ 3tx/wk	63	64	62	65	67	68	66	65	66	67	62	62
Pop. Mean	77	75	76	75	75	75	75	75	74	74	75	75
Std. Deviation	6.54	8.22	6.26	7.29	5.11	5.40	6.01	6.50	6.90	5.85	5.68	5.74
% URR>=65 w/ 3tx/wk	97%	94%	95%	96%	99%	100%	94%	93%	97%	96%	95%	97%



	Jan	Feb	Mar	Apr	May	Jun	Jul	Aug	Sep	Oct	Nov	Dec
# Pre Sys BP	84	86	82	84	83	86	85	89	87	88	85	89
# Pre Sys BP <= 165	78	75	74	76	76	78	81	81	76	76	75	78
Pop. Mean	141	143	140	140	140	141	140	141	142	144	145	143
Std. Deviation	18.7	19.6	20.8	19.3	18.2	18.1	18.5	18.7	19.5	19.3	18.8	18.6
% Pre Sys BP <=165	92%	85%	89%	87%	90%	90%	94%	90%	87%	85%	88%	87%



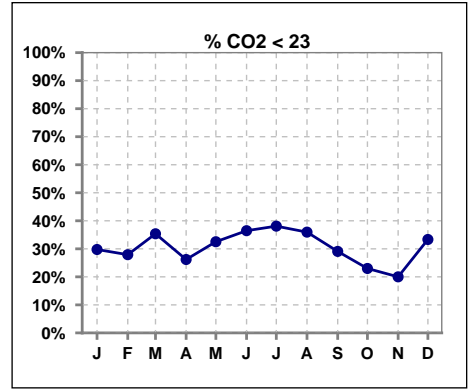
	Jan	Feb	Mar	Apr	May	Jun	Jul	Aug	Sep	Oct	Nov	Dec
# L processed/kg	84	86	81	84	83	86	85	89	87	88	85	89
# L processed/kg>=0.8	78	77	74	75	76	74	72	77	75	77	76	77
Pop. Mean	1	1	1	1	1	1	1	1	1	1	1	1
Std. Deviation	0.3	0.3	0.3	0.3	0.3	0.3	0.3	0.3	0.3	0.3	0.3	0.3
% L processed/kg>=0.8	93%	90%	91%	89%	92%	86%	85%	87%	86%	88%	89%	87%



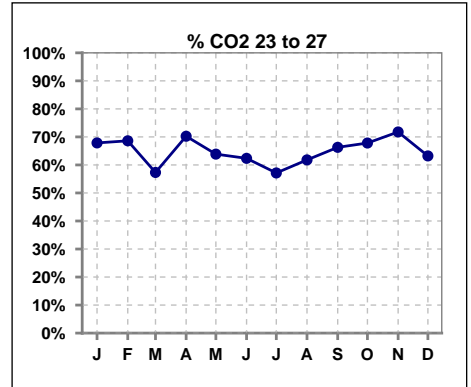
Methodology: a) All labs for 'Adequacy of Dialysis', 'Nutrition', 'Osteodystrophy', 'Anemia' and 'Diabetes' based on last value of month; b) BP's and #L processed are average of all values for month; c) Access data takes last access of month; d) Values for SGA and 'Infection Control' use most recent result.

I. ADEQUACY OF DIALYSIS - CONT.

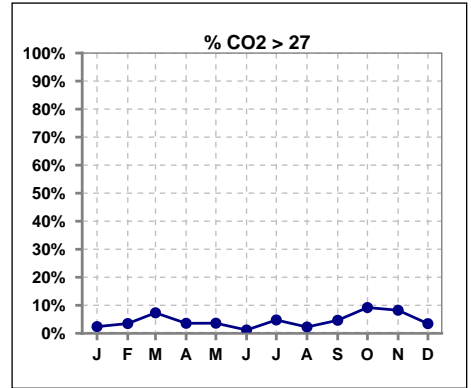
	Jan	Feb	Mar	Apr	May	Jun	Jul	Aug	Sep	Oct	Nov	Dec
# CO2	84	86	82	84	83	85	84	89	86	87	85	87
# CO2 < 23	25	24	29	22	27	31	32	32	25	20	17	29
Pop. Mean	24	23	24	24	23	23	23	23	24	24	24	24
Std. Deviation	2.54	2.37	2.64	2.41	2.26	2.29	2.36	2.33	2.24	2.48	2.35	2.33
% CO2 < 23	30%	28%	35%	26%	33%	36%	38%	36%	29%	23%	20%	33%



	Jan	Feb	Mar	Apr	May	Jun	Jul	Aug	Sep	Oct	Nov	Dec
# CO2	84	86	82	84	83	85	84	89	86	87	85	87
# CO2 23 to 27	57	59	47	59	53	53	48	55	57	59	61	55
Pop. Mean	24	23	24	24	23	23	23	23	24	24	24	24
Std. Deviation	2.54	2.37	2.64	2.41	2.26	2.29	2.36	2.33	2.24	2.48	2.35	2.33
% CO2 23 to 27	68%	69%	57%	70%	64%	62%	57%	62%	66%	68%	72%	63%



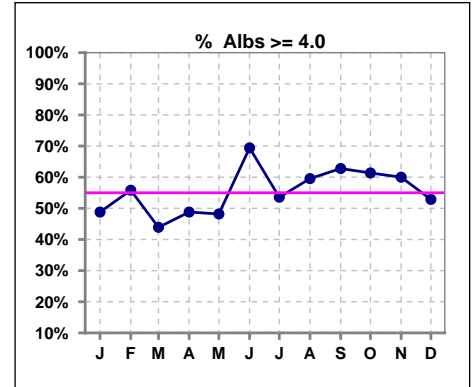
	Jan	Feb	Mar	Apr	May	Jun	Jul	Aug	Sep	Oct	Nov	Dec
# CO2	84	86	82	84	83	85	84	89	86	87	85	87
# CO2 > 27	2	3	6	3	3	1	4	2	4	8	7	3
Pop. Mean	24	23	24	24	23	23	23	23	24	24	24	24
Std. Deviation	2.54	2.37	2.64	2.41	2.26	2.29	2.36	2.33	2.24	2.48	2.35	2.33
% CO2 > 27	2%	3%	7%	4%	4%	1%	5%	2%	5%	9%	8%	3%



*Albumin values use BCG method - as of July 2001

II. NUTRITION

	Jan	Feb	Mar	Apr	May	Jun	Jul	Aug	Sep	Oct	Nov	Dec
# Albumin	84	86	82	84	83	85	84	89	86	88	85	87
# Albumin >= 4.0	41	48	36	41	40	59	45	53	54	54	51	46
Pop. Mean	3.9	3.9	3.9	3.9	3.9	4.0	3.9	4.0	4.0	4.0	4.0	3.9
Std. Deviation	0.30	0.35	0.33	0.34	0.38	0.40	0.34	0.36	0.36	0.38	0.42	0.35
% Alb >= 4.0	49%	56%	44%	49%	48%	69%	54%	60%	63%	61%	60%	53%

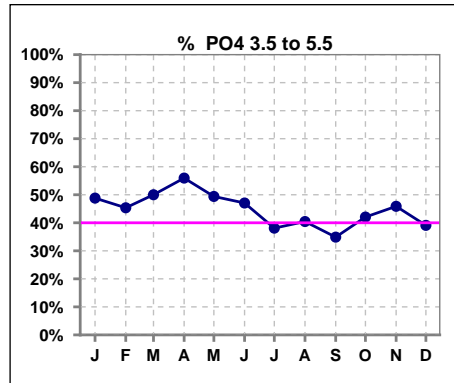


Methodology: a) All labs for 'Adequacy of Dialysis', 'Nutrition', 'Osteodystrophy', 'Anemia' and 'Diabetes' based on last value of month; b) BP's and #L processed are average of all values for month; c) Access data takes last access of month; d) Values for SGA and 'Infection Control' use most recent result.

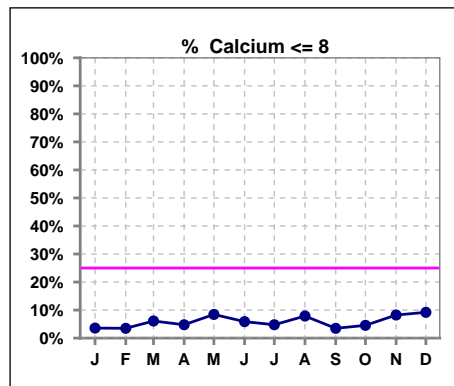
Lab methodology for PTH changed January 2012

III. OSTEODYSTROPHY

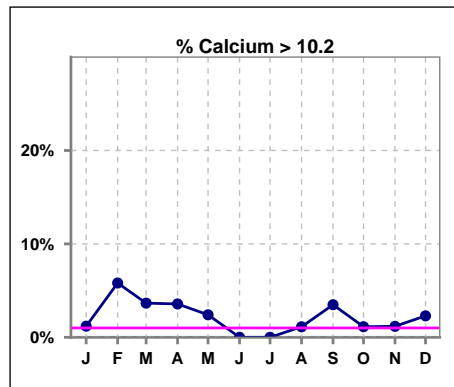
	Jan	Feb	Mar	Apr	May	Jun	Jul	Aug	Sep	Oct	Nov	Dec
# PO4	84	86	82	84	83	85	84	89	86	88	85	87
# PO4 3.5 to 5.5	41	39	41	47	41	40	32	36	30	37	39	34
Pop. Mean	5.7	5.7	5.8	5.8	5.8	5.9	6.0	6.1	5.9	5.8	5.7	5.9
Std. Deviation	1.76	1.85	1.85	1.96	1.49	1.63	1.63	2.23	2.16	1.92	1.73	1.87
% PO4 3.5 to 5.5	49%	45%	50%	56%	49%	47%	38%	40%	35%	42%	46%	39%



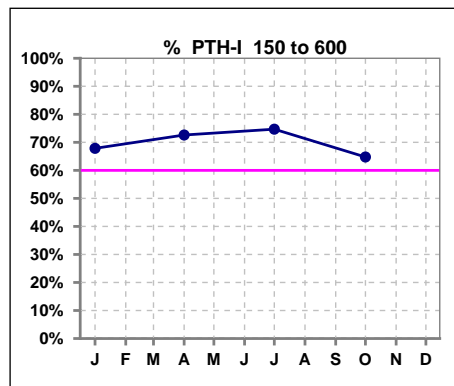
	Jan	Feb	Mar	Apr	May	Jun	Jul	Aug	Sep	Oct	Nov	Dec
# Calcium	84	86	82	84	83	85	84	89	86	88	85	87
# Calcium <= 8	3	3	5	4	7	5	4	7	3	4	7	8
Pop. Mean	9.2	9.3	9.1	9.1	9.0	9.0	8.9	9.1	9.2	9.1	9.2	9.2
Std. Deviation	0.63	0.65	0.73	0.67	0.77	0.65	0.66	0.61	0.65	0.60	0.73	0.71
% Calcium <= 8	4%	3%	6%	5%	8%	6%	5%	8%	3%	5%	8%	9%



	Jan	Feb	Mar	Apr	May	Jun	Jul	Aug	Sep	Oct	Nov	Dec
# Calcium	84	86	82	84	83	85	84	89	86	88	85	87
# Calcium > 10.2	1	5	3	3	2	0	0	1	3	1	1	2
Pop. Mean	9.2	9.3	9.1	9.1	9.0	9.0	8.9	9.1	9.2	9.1	9.2	9.2
Std. Deviation	0.63	0.65	0.73	0.67	0.77	0.65	0.66	0.61	0.65	0.60	0.73	0.71
% Calcium > 10.2	1%	6%	4%	4%	2%	0%	0%	1%	3%	1%	1%	2%



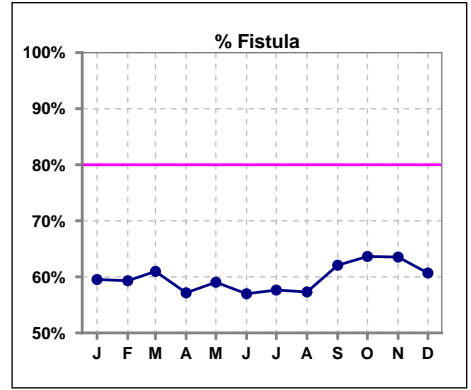
	Jan	Feb	Mar	Apr	May	Jun	Jul	Aug	Sep	Oct	Nov	Dec
# PTH-I	84			84			83			88		
# PTH-I 150 to 600	57			61			62			57		
Pop. Mean	457			451			431			401		
Std. Deviation	297			333			330			279		
% PTH-I 150 to 600	68%			73%			75%			65%		



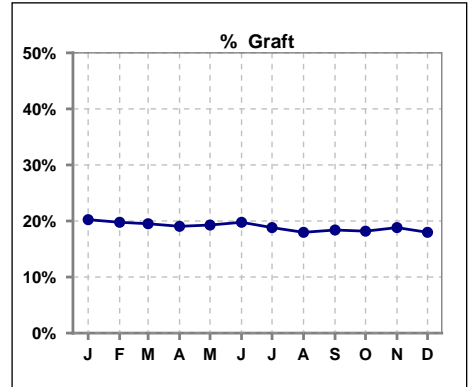
Methodology: a) All labs for 'Adequacy of Dialysis', 'Nutrition', 'Osteodystrophy', 'Anemia' and 'Diabetes' based on last value of month; b) BP's and #L processed are average of all values for month; c) Access data takes last access of month; d) Values for SGA and 'Infection Control' use most recent result.

IV. ACCESS

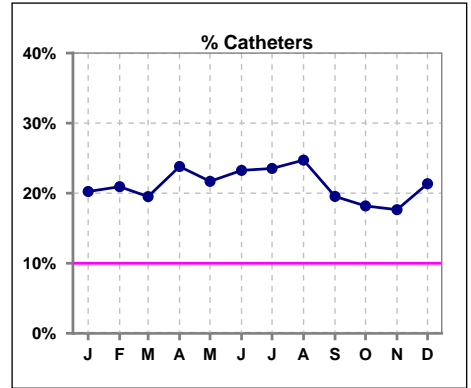
	Jan	Feb	Mar	Apr	May	Jun	Jul	Aug	Sep	Oct	Nov	Dec
# Access	84	86	82	84	83	86	85	89	87	88	85	89
# Fistula	50	51	50	48	49	49	49	51	54	56	54	54
% Fistula	60%	59%	61%	57%	59%	57%	58%	57%	62%	64%	64%	61%



	Jan	Feb	Mar	Apr	May	Jun	Jul	Aug	Sep	Oct	Nov	Dec
# Access	84	86	82	84	83	86	85	89	87	88	85	89
# Graft	17	17	16	16	16	17	16	16	16	16	16	16
% Graft	20%	20%	20%	19%	19%	20%	19%	18%	18%	18%	19%	18%



	Jan	Feb	Mar	Apr	May	Jun	Jul	Aug	Sep	Oct	Nov	Dec
# Access	84	86	82	84	83	86	85	89	87	88	85	89
# Catheters	17	18	16	20	18	20	20	22	17	16	15	19
% Catheters	20%	21%	20%	24%	22%	23%	24%	25%	20%	18%	18%	21%



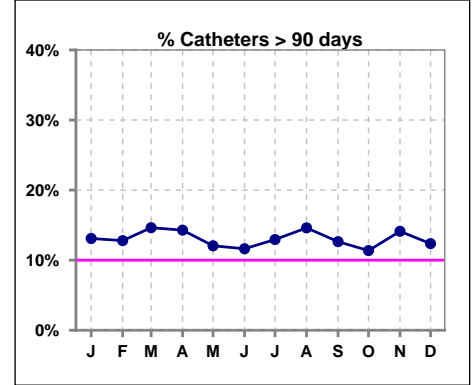
Methodology: a) All labs for 'Adequacy of Dialysis', 'Nutrition', 'Osteodystrophy', 'Anemia' and 'Diabetes' based on last value of month; b) BP's and #L processed are average of all values for month; c) Access data takes last access of month; d) Values for SGA and 'Infection Control' use most recent result.

IV. ACCESS - CONT.

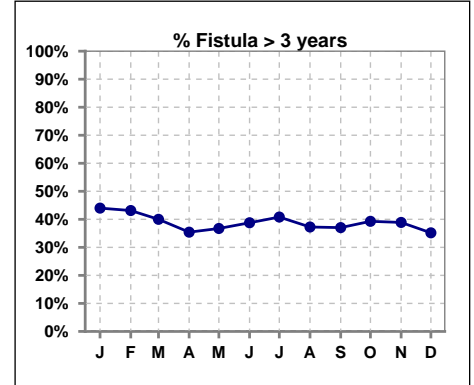
Catheters > 90 days

	Jan	Feb	Mar	Apr	May	Jun	Jul	Aug	Sep	Oct	Nov	Dec
# Access	84	86	82	84	83	86	85	89	87	88	85	89
# Catheters	11	11	12	12	10	10	11	13	11	10	12	11
% Catheters	13%	13%	15%	14%	12%	12%	13%	15%	13%	11%	14%	12%

Definition: Catheter in use on last treatment of the month



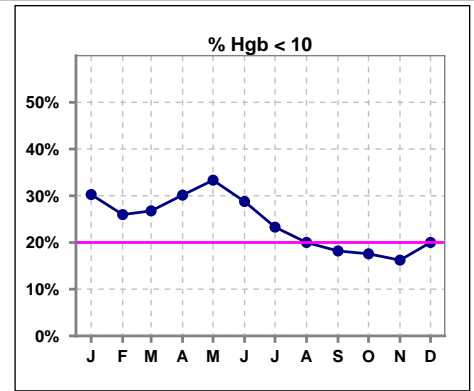
	Jan	Feb	Mar	Apr	May	Jun	Jul	Aug	Sep	Oct	Nov	Dec
# Fistula	50	51	50	48	49	49	49	51	54	56	54	54
# Fistula > 3 yrs	22	22	20	17	18	19	20	19	20	22	21	19
% Fistula > 3 yrs	44%	43%	40%	35%	37%	39%	41%	37%	37%	39%	39%	35%



V. ANEMIA

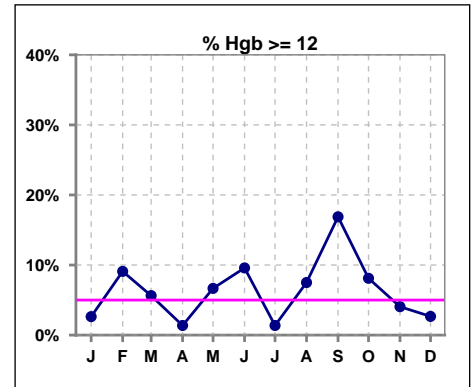
	Jan	Feb	Mar	Apr	May	Jun	Jul	Aug	Sep	Oct	Nov	Dec
# Hgb	76	77	71	73	75	73	73	80	77	74	74	75
# Hgb < 10	23	20	19	22	25	21	17	16	14	13	12	15
Pop. Mean	10.3	10.7	10.5	10.4	10.4	10.6	10.5	10.8	11.0	10.9	10.7	10.7
Std. Deviation	1.3	1.3	1.4	1.2	1.2	1.3	1.0	1.1	1.3	1.3	1.1	1.0
% Hgb < 10	30%	26%	27%	30%	33%	29%	23%	20%	18%	18%	16%	20%

Note: Excludes patients who received no ESA in month.



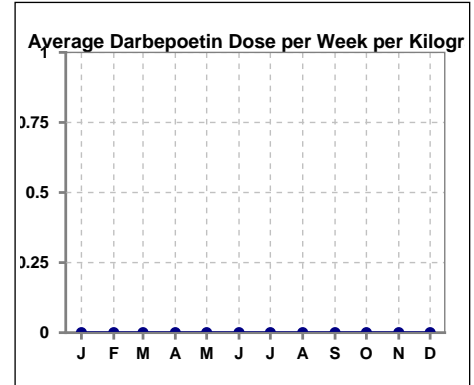
	Jan	Feb	Mar	Apr	May	Jun	Jul	Aug	Sep	Oct	Nov	Dec
# Hgb	76	77	71	73	75	73	73	80	77	74	74	75
# Hgb >= 12	2	7	4	1	5	7	1	6	13	6	3	2
Pop. Mean	10.3	10.7	10.5	10.4	10.4	10.6	10.5	10.8	11.0	10.9	10.7	10.7
Std. Deviation	1.3	1.3	1.4	1.2	1.2	1.3	1.0	1.1	1.3	1.3	1.1	1.0
% Hgb >= 12	3%	9%	6%	1%	7%	10%	1%	8%	17%	8%	4%	3%

Note: Excludes patients who received no ESA in month.



Average Darbepoetin Dose per Week per Kilogram

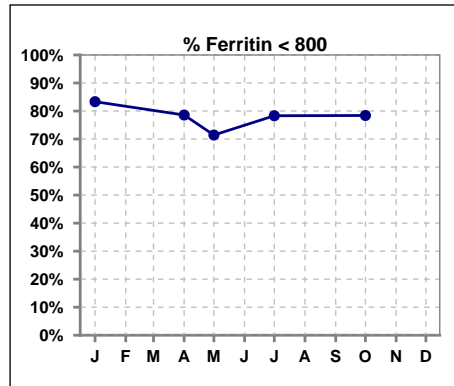
	Jan	Feb	Mar	Apr	May	Jun	Jul	Aug	Sep	Oct	Nov	Dec
# Average Darbepoetin	0	0	0	0	0	0	0	0	0	0	0	0



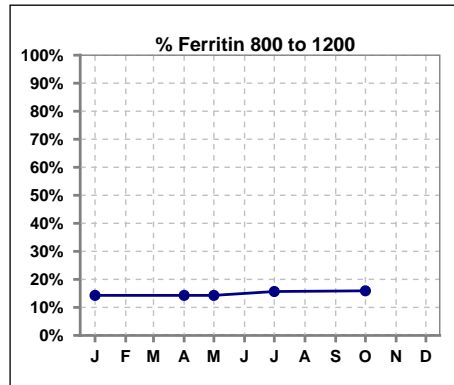
V. ANEMIA - CONT.

Iron Profile

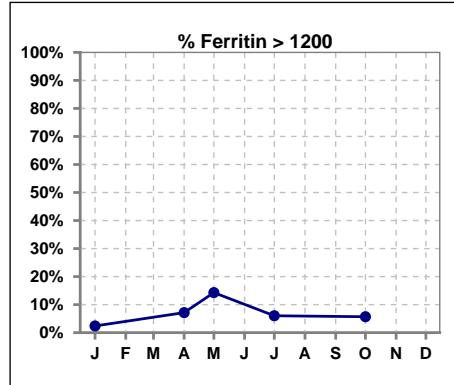
	Jan	Feb	Mar	Apr	May	Jun	Jul	Aug	Sep	Oct	Nov	Dec
# Ferritin	84			84	14		83			88		
# Ferritin < 800	70			66	10		65			69		
Pop. Mean	506			552	617		583			523		
Std. Deviation	332			470	533		674			377		
% Ferritin < 800	83%			79%	71%		78%			78%		



	Jan	Feb	Mar	Apr	May	Jun	Jul	Aug	Sep	Oct	Nov	Dec
# Ferritin	84			84	14		83			88		
# Ferritin 800 to 1200	12			12	2		13			14		
Pop. Mean	506			552	617		583			523		
Std. Deviation	332			470	533		674			377		
% Ferritin 800 to 1200	14%			14%	14%		16%			16%		



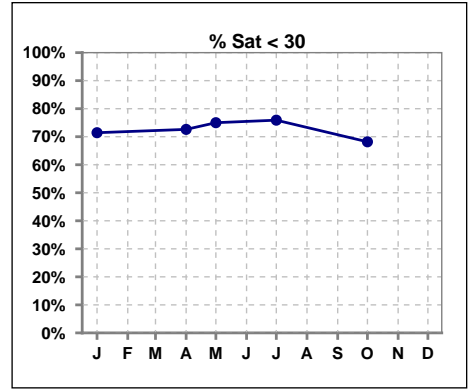
	Jan	Feb	Mar	Apr	May	Jun	Jul	Aug	Sep	Oct	Nov	Dec
# Ferritin	84			84	14		83			88		
# Ferritin > 1200	2			6	2		5			5		
Pop. Mean	506			552	617		583			523		
Std. Deviation	332			470	533		674			377		
% Ferritin > 1200	2%			7%	14%		6%			6%		



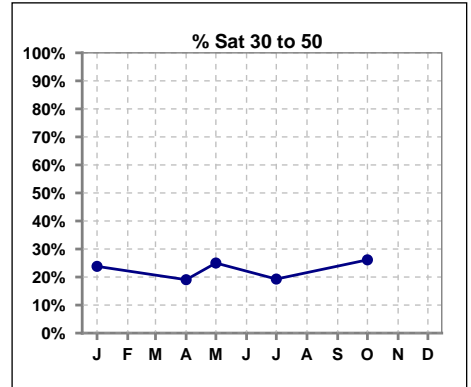
Methodology: a) All labs for 'Adequacy of Dialysis', 'Nutrition', 'Osteodystrophy', 'Anemia' and 'Diabetes' based on last value of month; b) BP's and #L processed are average of all values for month; c) Access data takes last access of month; d) Values for SGA and 'Infection Control' use most recent result.

V. ANEMIA - CONT.

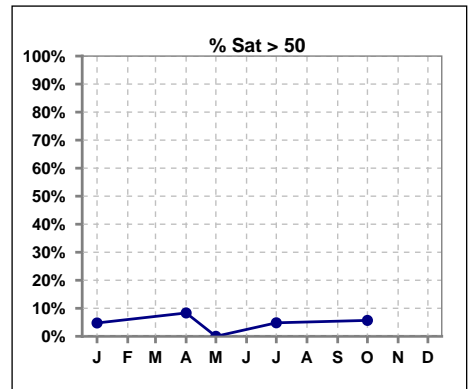
	Jan	Feb	Mar	Apr	May	Jun	Jul	Aug	Sep	Oct	Nov	Dec
# % Sat	84			84	16		83			88		
# % Sat < 30	60			61	12		63			60		
Pop. Mean	25			25	21		25			29		
Std. Deviation	15			15	11		12			18		
% % Sat < 30	71%			73%	75%		76%			68%		



	Jan	Feb	Mar	Apr	May	Jun	Jul	Aug	Sep	Oct	Nov	Dec
# % Sat	84			84	16		83			88		
# % Sat 30 to 50	20			16	4		16			23		
Pop. Mean	25			25	21		25			29		
Std. Deviation	15			15	11		12			18		
% % Sat 30 to 50	24%			19%	25%		19%			26%		

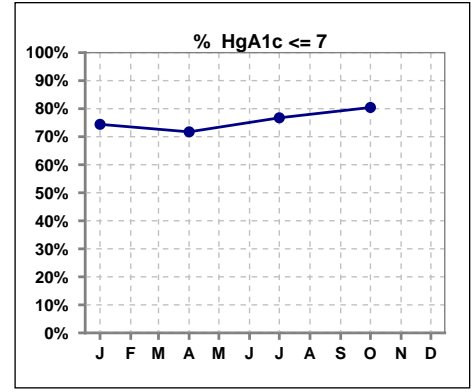


	Jan	Feb	Mar	Apr	May	Jun	Jul	Aug	Sep	Oct	Nov	Dec
# % Sat	84			84	16		83			88		
# % Sat > 50	4			7	0		4			5		
Pop. Mean	25			25	21		25			29		
Std. Deviation	15			15	11		12			18		
% % Sat > 50	5%			8%	0%		5%			6%		



VI. Diabetes

	Jan	Feb	Mar	Apr	May	Jun	Jul	Aug	Sep	Oct	Nov	Dec
# HgA1c	43			46			43			46		
# HgA1c <= 7	32			33			33			37		
Pop. Mean	6.4			6.2			6.3			6.1		
Std. Deviation	1.58			1.52			1.30			1.27		
% HgA1c <= 7	74%			72%			77%			80%		

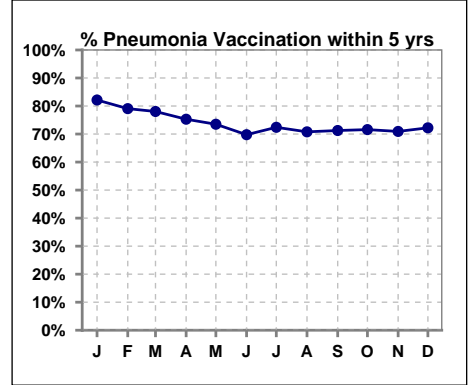


Methodology: a) All labs for 'Adequacy of Dialysis', 'Nutrition', 'Osteodystrophy', 'Anemia' and 'Diabetes' based on last value of month; b) BP's and #L processed are average of all values for month; c) Access data takes last access of month; d) Values for SGA and 'Infection Control' use most recent result.

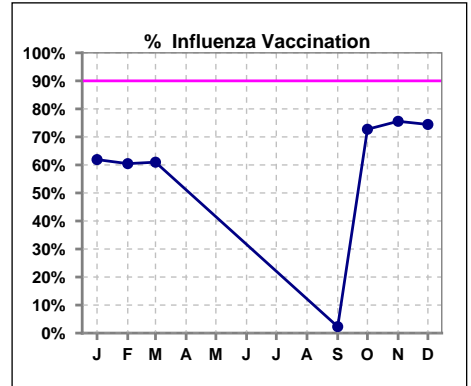
VII. Infection Control

Pneumonia vaccination within the past five years

	Jan	Feb	Mar	Apr	May	Jun	Jul	Aug	Sep	Oct	Nov	Dec
# Patient	84	86	82	85	83	86	87	89	87	88	86	90
# Pneumonia	69	68	64	64	61	60	63	63	62	63	61	65
% Pneumonia	82%	79%	78%	75%	73%	70%	72%	71%	71%	72%	71%	72%



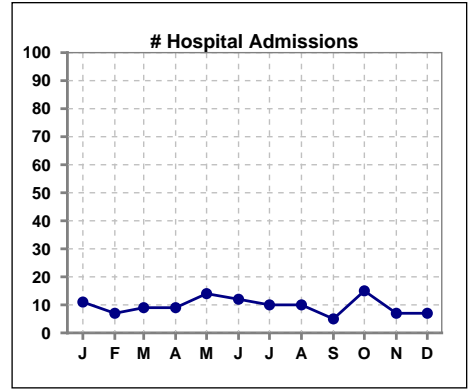
	Jan	Feb	Mar	Apr	May	Jun	Jul	Aug	Sep	Oct	Nov	Dec
# Patient	84	86	82						87	88	86	90
# Influenza	52	52	50						2	64	65	67
% Influenza	62%	60%	61%						2%	73%	76%	74%



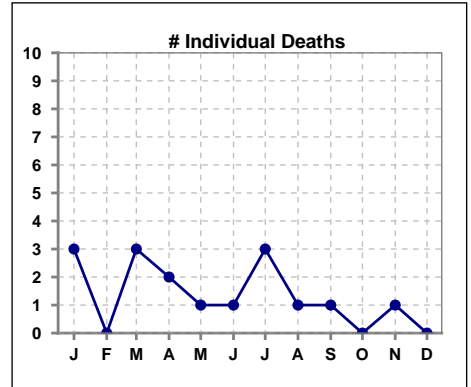
Methodology: a) All labs for 'Adequacy of Dialysis', 'Nutrition', 'Osteodystrophy', 'Anemia' and 'Diabetes' based on last value of month; b) BP's and #L processed are average of all values for month; c) Access data takes last access of month; d) Values for SGA and 'Infection Control' use most recent result.

VIII. Outcome measures

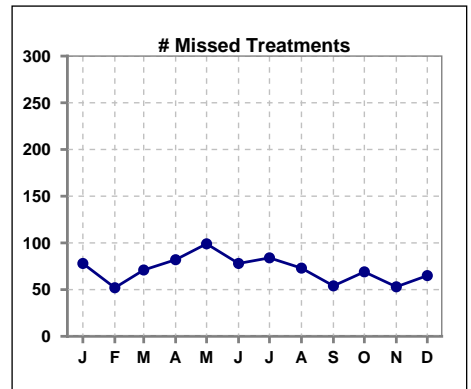
	Jan	Feb	Mar	Apr	May	Jun	Jul	Aug	Sep	Oct	Nov	Dec
# Patient	84	86	82	85	83	86	87	89	87	88	86	90
# Hospital Admissions	11	7	9	9	14	12	10	10	5	15	7	7



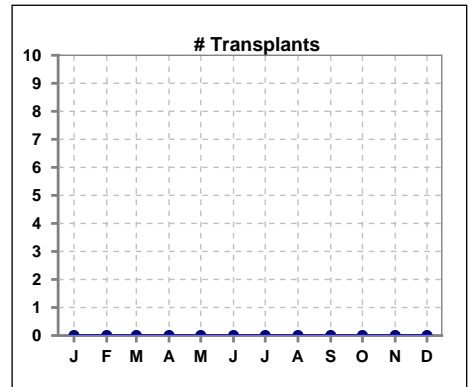
	Jan	Feb	Mar	Apr	May	Jun	Jul	Aug	Sep	Oct	Nov	Dec
# Patient	84	86	82	85	83	86	87	89	87	88	86	90
# Individual Deaths	3	0	3	2	1	1	3	1	1	0	1	0



	Jan	Feb	Mar	Apr	May	Jun	Jul	Aug	Sep	Oct	Nov	Dec
# Patient	84	86	82	85	83	86	87	89	87	88	86	90
# Missed Treatments	78	52	71	82	99	78	84	73	54	69	53	65



	Jan	Feb	Mar	Apr	May	Jun	Jul	Aug	Sep	Oct	Nov	Dec
# Patient	84	86	82	85	83	86	87	89	87	88	86	90
# Transplants	0	0	0	0	0	0	0	0	0	0	0	0



Methodology: a) All labs for 'Adequacy of Dialysis', 'Nutrition', 'Osteodystrophy', 'Anemia' and 'Diabetes' based on last value of month; b) BP's and #L processed are average of all values for month; c) Access data takes last access of month; d) Values for SGA and 'Infection Control' use most recent result.