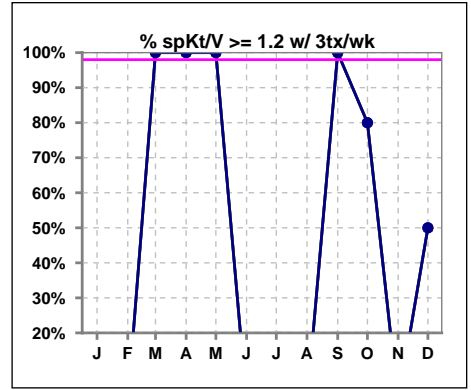
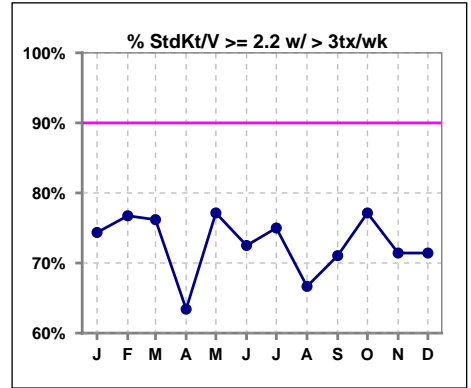


I. ADEQUACY OF DIALYSIS

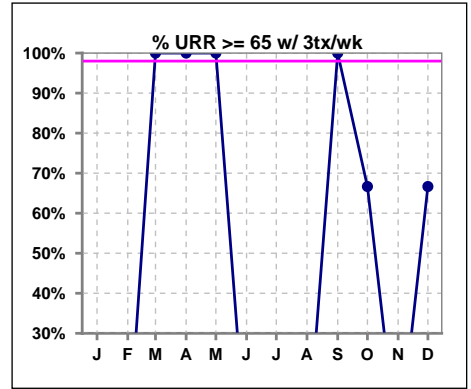
	Jan	Feb	Mar	Apr	May	Jun	Jul	Aug	Sep	Oct	Nov	Dec
# spKt/V w/3tx/wk	0	0	1	2	2	0	2	2	1	5	0	4
# spKt/V>=1.2 w/3tx/wk	0	0	1	2	2	0	0	0	1	4	0	2
Pop. Mean	0	0	1.28	1.31	1.81	0	0.81	0.90	1.30	1.50	0	1.43
Std. Deviation	0	0	0	0.06	0.08	0	0.09	0.35	0	0.64	0	0.57
% >=1.2 w/3tx/wk	0%	0%	100%	100%	100%	0%	0%	0%	100%	80%	0%	50%



	Jan	Feb	Mar	Apr	May	Jun	Jul	Aug	Sep	Oct	Nov	Dec
# StdKt/V w/>3tx/wk	39	43	42	41	35	40	36	39	38	35	42	42
# >= 2.2 w/>3tx/wk	29	33	32	26	27	29	27	26	27	27	30	30
Pop. Mean	2.32	2.32	2.32	2.30	2.31	2.34	2.32	2.29	2.28	2.32	2.31	2.34
Std. Deviation	0.28	0.39	0.28	0.34	0.19	0.31	0.42	0.31	0.27	0.35	0.32	0.46
% >= 2.2 w/>3tx/wk	74%	77%	76%	63%	77%	73%	75%	67%	71%	77%	71%	71%



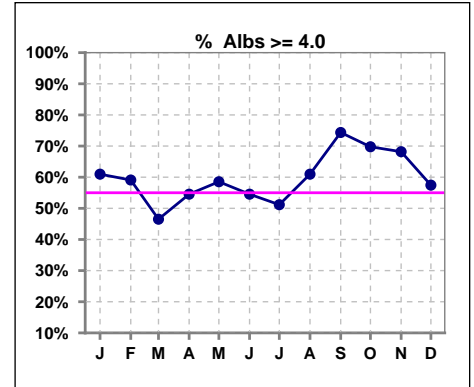
	Jan	Feb	Mar	Apr	May	Jun	Jul	Aug	Sep	Oct	Nov	Dec
# URR w/ 3tx/wk	0	0	1	1	2	0	2	1	1	6	0	3
# URR>=65 w/ 3tx/wk	0	0	1	1	2	0	0	0	1	4	0	2
Pop. Mean	0	0	69	71	79	0	53	65	69	66	0	75
Std. Deviation	0	0	0	0	2.12	0	4.24	0	0	19.63	0	11.07
% URR>=65 w/ 3tx/wk	0%	0%	100%	100%	100%	0%	0%	0%	100%	67%	0%	67%



*Albumin values use BCG method - as of July 2001

II. NUTRITION

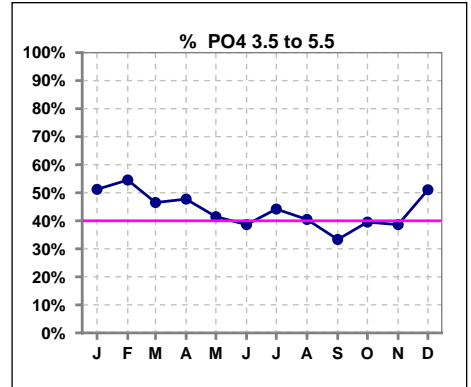
	Jan	Feb	Mar	Apr	May	Jun	Jul	Aug	Sep	Oct	Nov	Dec
# Albumin	41	44	43	44	41	44	43	41	39	43	44	47
# Albumin >= 4.0	25	26	20	24	24	24	22	25	29	30	30	27
Pop. Mean	4.0	4.0	4.0	4.0	4.0	4.0	3.9	4.0	4.1	4.1	4.1	4.0
Std. Deviation	0.33	0.38	0.37	0.32	0.31	0.34	0.32	0.32	0.27	0.32	0.29	0.32
% Alb >= 4.0	61%	59%	47%	55%	59%	55%	51%	61%	74%	70%	68%	57%



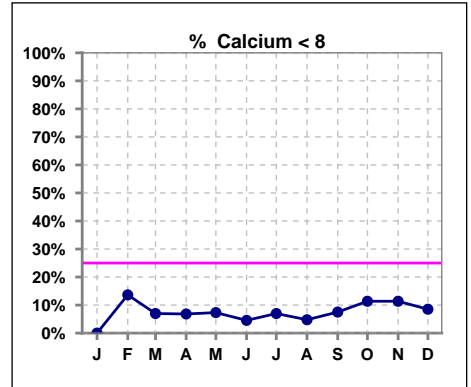
Lab methodology for PTH changed January 2012

III. OSTEODYSTROPHY

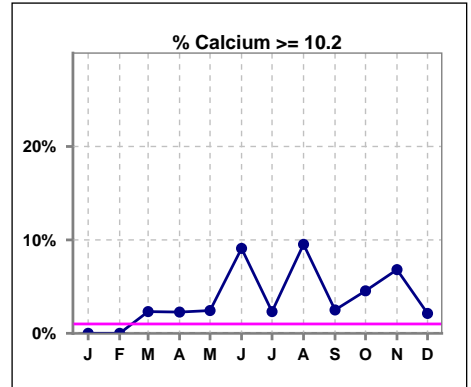
	Jan	Feb	Mar	Apr	May	Jun	Jul	Aug	Sep	Oct	Nov	Dec
# PO4	41	44	43	44	41	44	43	42	39	43	44	47
# PO4 3.5 to 5.5	21	24	20	21	17	17	19	17	13	17	17	24
Pop. Mean	5.6	5.5	5.8	5.4	5.6	5.6	5.5	5.9	5.7	5.5	5.6	5.4
Std. Deviation	1.74	1.57	1.79	1.48	1.48	1.73	1.65	1.90	1.77	1.62	1.78	1.56
% PO4 3.5 to 5.5	51%	55%	47%	48%	41%	39%	44%	40%	33%	40%	39%	51%



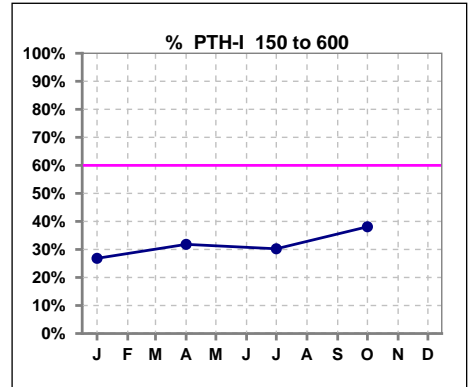
	Jan	Feb	Mar	Apr	May	Jun	Jul	Aug	Sep	Oct	Nov	Dec
# Calcium	42	44	43	44	41	44	43	42	40	44	44	47
# Calcium <= 8	0	6	3	3	3	2	3	2	3	5	5	4
Pop. Mean	9.1	9.0	9.0	9.2	9.1	9.4	9.2	9.3	9.2	9.1	9.1	9.0
Std. Deviation	0.61	0.68	0.62	0.64	0.69	0.80	0.73	0.76	0.67	0.71	0.92	0.79
% Calcium <= 8	0%	14%	7%	7%	7%	5%	7%	5%	8%	11%	11%	9%



	Jan	Feb	Mar	Apr	May	Jun	Jul	Aug	Sep	Oct	Nov	Dec
# Calcium	42	44	43	44	41	44	43	42	40	44	44	47
# Calcium > 10.2	0	0	1	1	1	4	1	4	1	2	3	1
Pop. Mean	9.1	9.0	9.0	9.2	9.1	9.4	9.2	9.3	9.2	9.1	9.1	9.0
Std. Deviation	0.61	0.68	0.62	0.64	0.69	0.80	0.73	0.76	0.67	0.71	0.92	0.79
% Calcium > 10.2	0%	0%	2%	2%	2%	9%	2%	10%	3%	5%	7%	2%



	Jan	Feb	Mar	Apr	May	Jun	Jul	Aug	Sep	Oct	Nov	Dec
# PTH-I	41			44			43			42		
# PTH-I 150 to 600	11			14			13			16		
Pop. Mean	901			871			850			896		
Std. Deviation	924			798			1008			998		
% PTH-I 150 to 600	27%			32%			30%			38%		

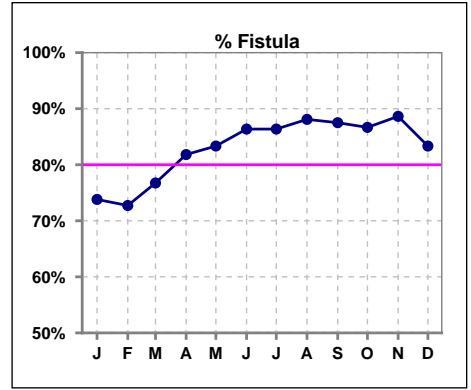


Methodology: a) All labs for 'Adequacy of Dialysis', 'Nutrition', 'Osteodystrophy' and 'Anemia' based on last value of month; b) Access data takes last access of month; c) Values for 'Infection Control' uses most recent result.

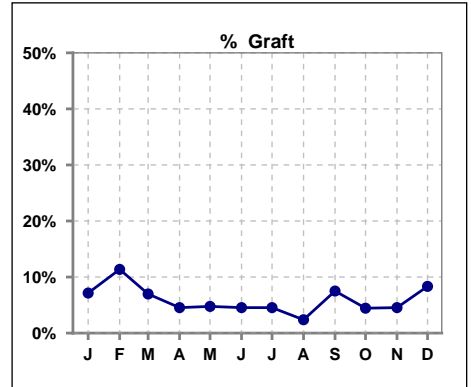
Northwest Kidney Centers - Home Hemodialysis
Quality Assurance Reports
 Through period ending Dec. 31, 2022

IV. ACCESS

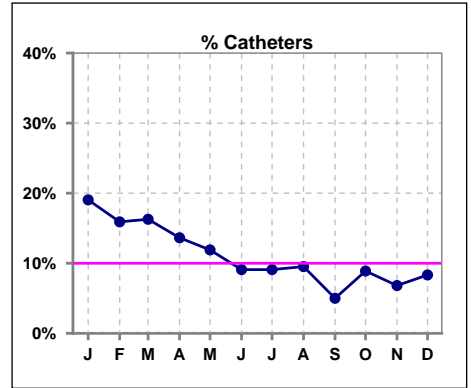
	Jan	Feb	Mar	Apr	May	Jun	Jul	Aug	Sep	Oct	Nov	Dec
# Access	42	44	43	44	42	44	44	42	40	45	44	48
# Fistula	31	32	33	36	35	38	38	37	35	39	39	40
% Fistula	74%	73%	77%	82%	83%	86%	86%	88%	88%	87%	89%	83%



	Jan	Feb	Mar	Apr	May	Jun	Jul	Aug	Sep	Oct	Nov	Dec
# Access	42	44	43	44	42	44	44	42	40	45	44	48
# Graft	3	5	3	2	2	2	2	1	3	2	2	4
% Graft	7%	11%	7%	5%	5%	5%	5%	2%	8%	4%	5%	8%



	Jan	Feb	Mar	Apr	May	Jun	Jul	Aug	Sep	Oct	Nov	Dec
# Access	42	44	43	44	42	44	44	42	40	45	44	48
# Catheters	8	7	7	6	5	4	4	4	2	4	3	4
% Catheters	19%	16%	16%	14%	12%	9%	9%	10%	5%	9%	7%	8%



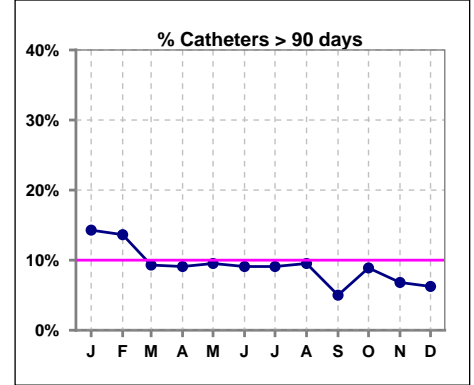
Methodology: a) All labs for 'Adequacy of Dialysis', 'Nutrition', 'Osteodystrophy' and 'Anemia' based on last value of month; b) Access data takes last access of month; c) Values for 'Infection Control' uses most recent result.

IV. ACCESS - CONT.

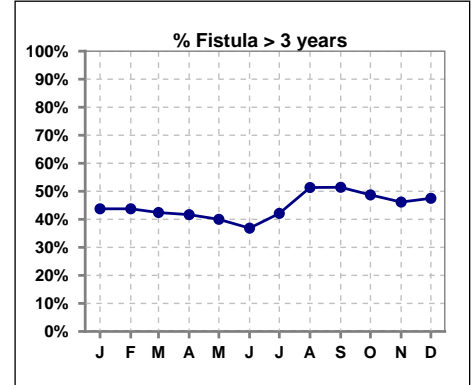
Catheters > 90 days

	Jan	Feb	Mar	Apr	May	Jun	Jul	Aug	Sep	Oct	Nov	Dec
# Access	42	44	43	44	42	44	44	42	40	45	44	48
# Catheters	6	6	4	4	4	4	4	4	2	4	3	3
% Catheters	14%	14%	9%	9%	10%	9%	9%	10%	5%	9%	7%	6%

Definition: Catheter in use on last treatment of the month

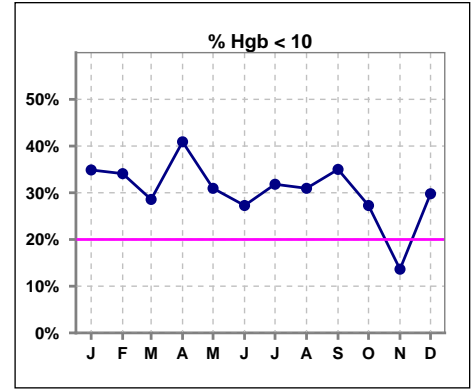


	Jan	Feb	Mar	Apr	May	Jun	Jul	Aug	Sep	Oct	Nov	Dec
# Fistula	32	32	33	36	35	38	38	37	35	39	39	40
# Fistula > 3 yrs	14	14	14	15	14	14	16	19	18	19	18	19
% Fistula > 3 yrs	44%	44%	42%	42%	40%	37%	42%	51%	51%	49%	46%	48%

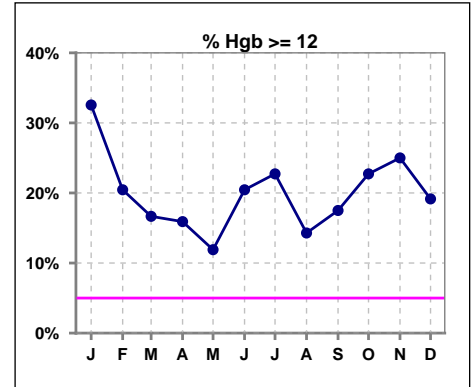


V. ANEMIA

	Jan	Feb	Mar	Apr	May	Jun	Jul	Aug	Sep	Oct	Nov	Dec
# Hgb	43	44	42	44	42	44	44	42	40	44	44	47
# Hgb < 10	15	15	12	18	13	12	14	13	14	12	6	14
Pop. Mean	11.0	10.8	10.8	10.3	10.6	10.9	10.8	10.7	10.6	10.9	11.3	10.5
Std. Deviation	2.0	1.6	1.9	2.0	1.7	1.7	1.6	1.7	1.8	1.8	1.8	1.8
% Hgb < 10	35%	34%	29%	41%	31%	27%	32%	31%	35%	27%	14%	30%



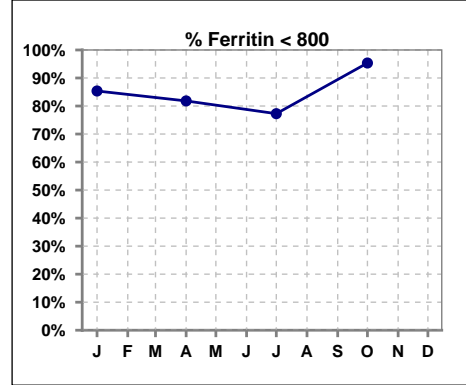
	Jan	Feb	Mar	Apr	May	Jun	Jul	Aug	Sep	Oct	Nov	Dec
# Hgb	43	44	42	44	42	44	44	42	40	44	44	47
# Hgb >= 12	14	9	7	7	5	9	10	6	7	10	11	9
Pop. Mean	11.0	10.8	10.8	10.3	10.6	10.9	10.8	10.7	10.6	10.9	11.3	10.5
Std. Deviation	2.0	1.6	1.9	2.0	1.7	1.7	1.6	1.7	1.8	1.8	1.8	1.8
% Hgb >= 12	33%	20%	17%	16%	12%	20%	23%	14%	18%	23%	25%	19%



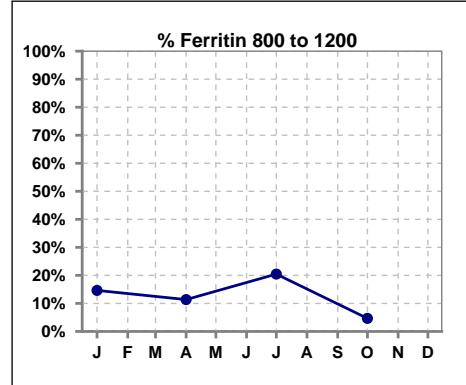
V. ANEMIA - CONT.

Iron Profile

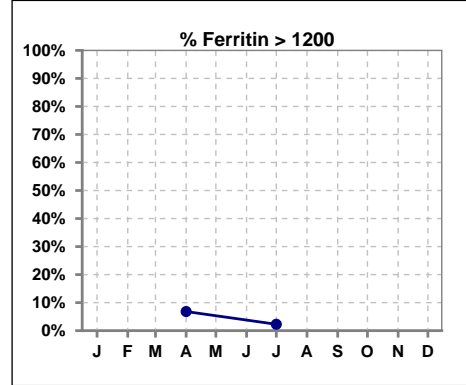
	Jan	Feb	Mar	Apr	May	Jun	Jul	Aug	Sep	Oct	Nov	Dec
# Ferritin	41			44			44			43		
# Ferritin < 800	35			36			34			41		
Pop. Mean	459			502			454			383		
Std. Deviation	314			389			353			273		
% Ferritin < 800	85%			82%			77%			95%		



	Jan	Feb	Mar	Apr	May	Jun	Jul	Aug	Sep	Oct	Nov	Dec
# Ferritin	41			44			44			43		
# Ferritin 800 to 1200	6			5			9			2		
Pop. Mean	459			502			454			383		
Std. Deviation	314			389			353			273		
% Ferritin 800 to 1200	15%			11%			20%			5%		

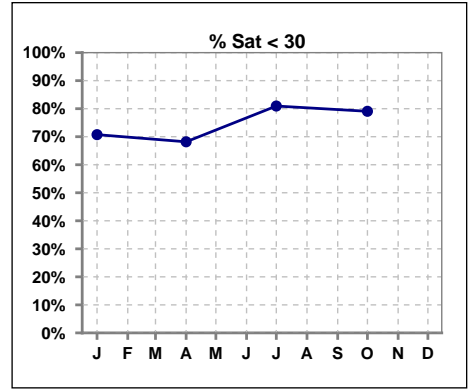


	Jan	Feb	Mar	Apr	May	Jun	Jul	Aug	Sep	Oct	Nov	Dec
# Ferritin	41			44			44			43		
# Ferritin > 1200				3			1					
Pop. Mean	459			502			454			383		
Std. Deviation	314			389			353			273		
% Ferritin > 1200				7%			2%					

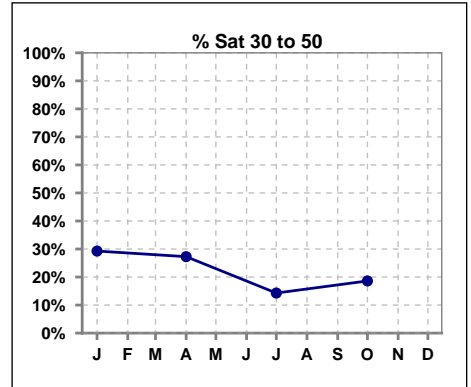


V. ANEMIA - CONT.

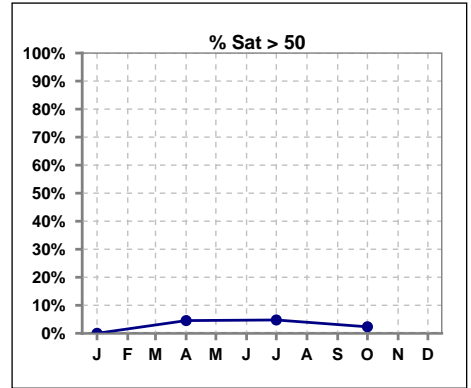
	Jan	Feb	Mar	Apr	May	Jun	Jul	Aug	Sep	Oct	Nov	Dec
# % Sat	41			44			42			43		
# % Sat < 30	29			30			34			34		
Pop. Mean	26			26			25			25		
Std. Deviation	9			13			16			18		
% % Sat < 30	71%			68%			81%			79%		



	Jan	Feb	Mar	Apr	May	Jun	Jul	Aug	Sep	Oct	Nov	Dec
# % Sat	41			44			42			43		
# % Sat 30 to 50	12			12			6			8		
Pop. Mean	26			26			25			25		
Std. Deviation	9			13			16			18		
% % Sat 30 to 50	29%			27%			14%			19%		



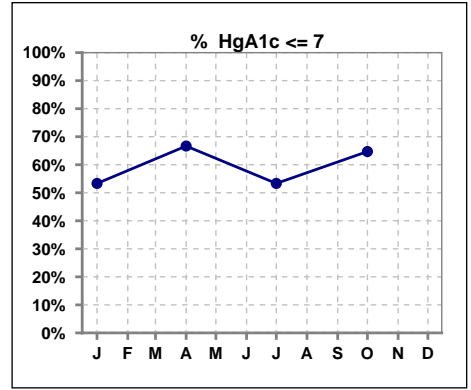
	Jan	Feb	Mar	Apr	May	Jun	Jul	Aug	Sep	Oct	Nov	Dec
# % Sat	41			44			42			43		
# % Sat > 50	0			2			2			1		
Pop. Mean	26			26			25			25		
Std. Deviation	9			13			16			18		
% % Sat > 50	0%			5%			5%			2%		



Methodology: a) All labs for 'Adequacy of Dialysis', 'Nutrition', 'Osteodystrophy' and 'Anemia' based on last value of month; b) Access data takes last access of month; c) Values for 'Infection Control' uses most recent result.

VI. Diabetes

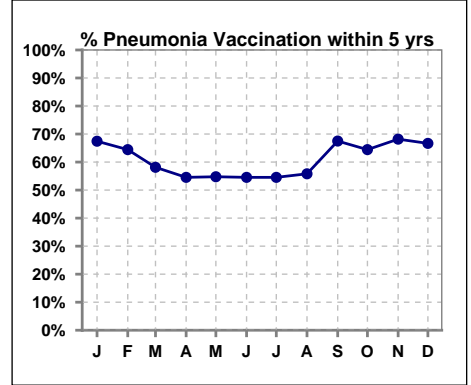
	Jan	Feb	Mar	Apr	May	Jun	Jul	Aug	Sep	Oct	Nov	Dec
# HgA1c	15			18			15			17		
# HgA1c <= 7	8			12			8			11		
Pop. Mean	6.8			6.7			7.2			6.6		
Std. Deviation	1.33			1.13			1.44			1.23		
% HgA1c <= 7	53%			67%			53%			65%		



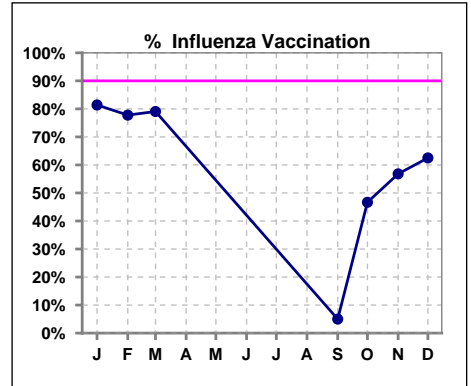
VII. Infection Control

Pneumonia vaccination within the past five years

	Jan	Feb	Mar	Apr	May	Jun	Jul	Aug	Sep	Oct	Nov	Dec
# Patient	43	45	43	44	42	44	44	43	40	45	44	48
# Pneumonia	29	29	25	24	23	24	24	24	27	29	30	32
% Pneumonia	67%	64%	58%	55%	55%	55%	55%	56%	68%	64%	68%	67%



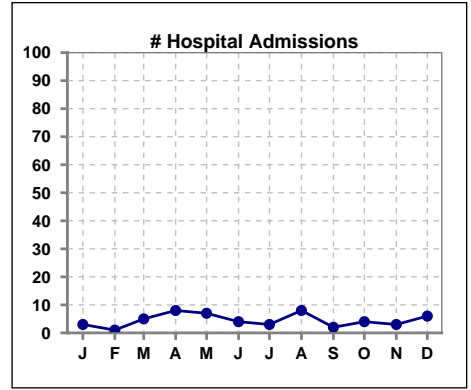
	Jan	Feb	Mar	Apr	May	Jun	Jul	Aug	Sep	Oct	Nov	Dec
# Patient	43	45	43						40	45	44	48
# Influenza	35	35	34						2	21	25	30
% Influenza	81%	78%	79%						5%	47%	57%	63%



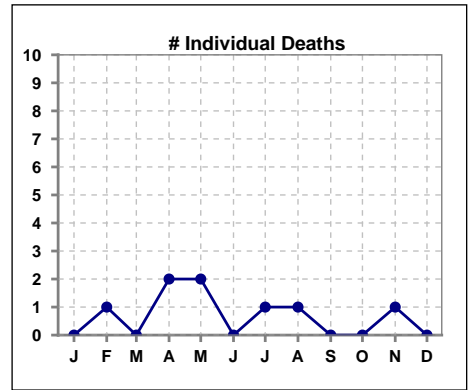
Methodology: a) All labs for 'Adequacy of Dialysis', 'Nutrition', 'Osteodystrophy' and 'Anemia' based on last value of month; b) Access data takes last access of month; c) Values for 'Infection Control' uses most recent result.

VIII. Outcome measures

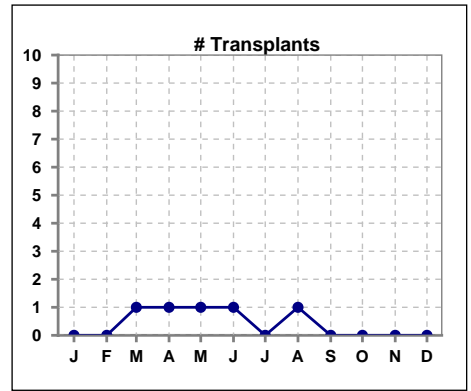
	Jan	Feb	Mar	Apr	May	Jun	Jul	Aug	Sep	Oct	Nov	Dec
# Patient	43	45	43	44	42	44	44	43	40	45	44	48
# Hospital Admissions	3	1	5	8	7	4	3	8	2	4	3	6



	Jan	Feb	Mar	Apr	May	Jun	Jul	Aug	Sep	Oct	Nov	Dec
# Patient	43	45	43	44	42	44	44	43	40	45	44	48
# Individual Deaths	0	1	0	2	2	0	1	1	0	0	1	0



	Jan	Feb	Mar	Apr	May	Jun	Jul	Aug	Sep	Oct	Nov	Dec
# Patient	43	45	43	44	42	44	44	43	40	45	44	48
# Transplants	0	0	1	1	1	1	0	1	0	0	0	0



Methodology: a) All labs for 'Adequacy of Dialysis', 'Nutrition', 'Osteodystrophy' and 'Anemia' based on last value of month; b) Access data takes last access of month; c) Values for 'Infection Control' uses most recent result.