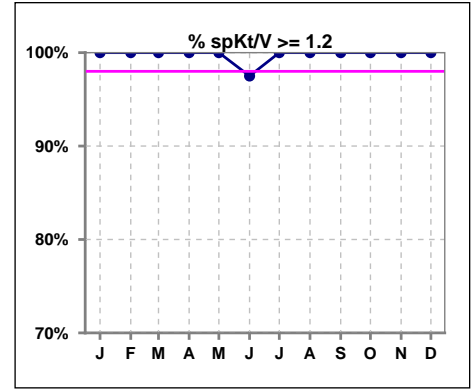
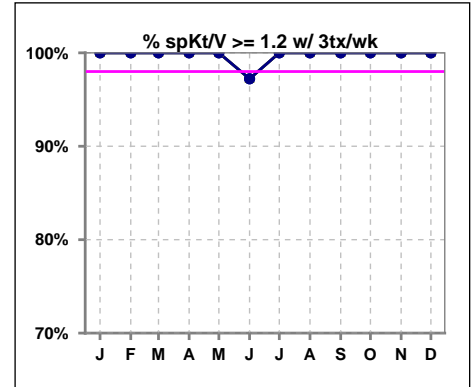


**I. ADEQUACY OF DIALYSIS**

	Jan	Feb	Mar	Apr	May	Jun	Jul	Aug	Sep	Oct	Nov	Dec
# spKt/V	37	38	40	41	41	40	41	40	40	42	41	40
# spKt/V >= 1.2	37	38	40	41	41	39	41	40	40	42	41	40
Pop. Mean	1.64	1.66	1.68	1.67	1.69	1.66	1.62	1.66	1.63	1.65	1.64	1.66
Std. Deviation	0.23	0.26	0.23	0.23	0.18	0.26	0.26	0.26	0.27	0.24	0.25	0.29
% spKt/V >= 1.2	100%	100%	100%	100%	100%	98%	100%	100%	100%	100%	100%	100%



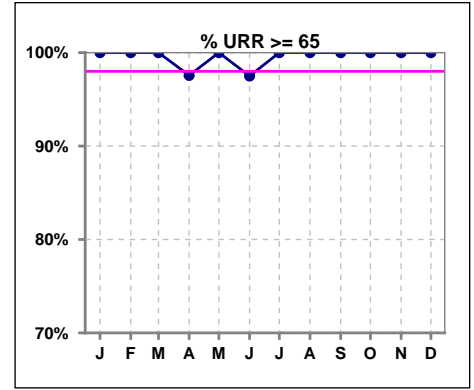
	Jan	Feb	Mar	Apr	May	Jun	Jul	Aug	Sep	Oct	Nov	Dec
# spKt/V w/ 3tx/wk	34	34	36	37	36	36	36	36	37	39	39	37
# spKt/V >= 1.2 w/3tx/wk	34	34	36	37	36	35	36	36	37	39	39	37
Pop. Mean	1.66	1.65	1.68	1.67	1.68	1.69	1.63	1.67	1.64	1.66	1.64	1.65
Std. Deviation	0.24	0.22	0.23	0.23	0.18	0.26	0.27	0.26	0.28	0.23	0.25	0.29
% >= 1.2 w/3tx/wk	100%	100%	100%	100%	100%	97%	100%	100%	100%	100%	100%	100%



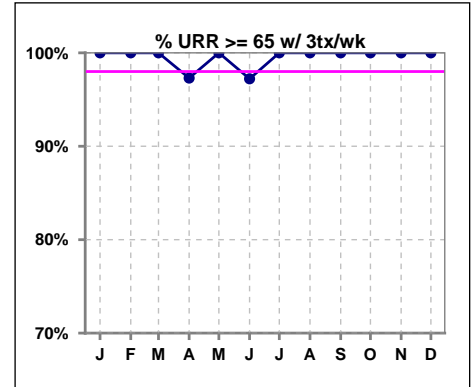
Methodology: a) All labs for 'Adequacy of Dialysis', 'Nutrition', 'Osteodystrophy', 'Anemia' and 'Diabetes' based on last value of month; b) BP's and #L processed are average of all values for month; c) Access data takes last access of month; d) Values for SGA and 'Infection Control' use most recent result.

**I. ADEQUACY OF DIALYSIS - CONT.**

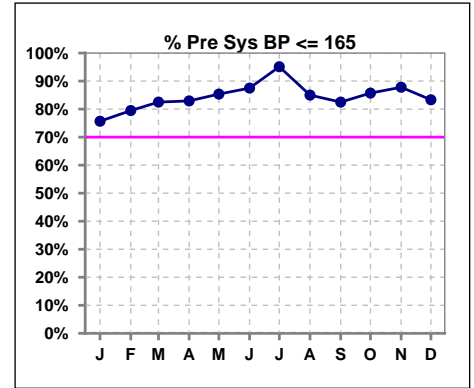
	Jan	Feb	Mar	Apr	May	Jun	Jul	Aug	Sep	Oct	Nov	Dec
# URR	37	39	40	41	41	40	41	40	40	42	41	40
# URR >= 65	37	39	40	40	41	39	41	40	40	42	41	40
Pop. Mean	76	76	76	76	77	76	75	76	75	76	76	76
Std. Deviation	4.34	4.94	4.68	4.69	3.73	5.95	5.09	5.35	5.38	4.65	4.91	5.74
% URR >= 65	100%	100%	100%	98%	100%	98%	100%	100%	100%	100%	100%	100%



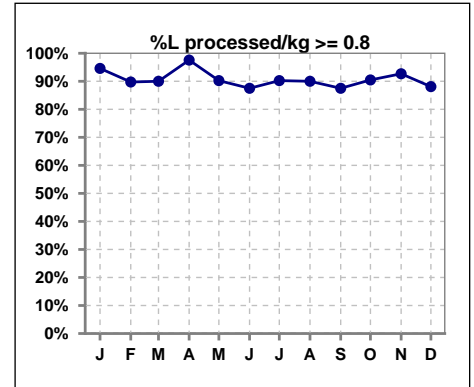
	Jan	Feb	Mar	Apr	May	Jun	Jul	Aug	Sep	Oct	Nov	Dec
# URR w/ 3tx/wk	34	35	36	37	36	36	36	36	37	39	39	37
# URR>=65 w/ 3tx/wk	34	35	36	36	36	35	36	36	37	39	39	37
Pop. Mean	76	76	76	76	77	77	75	76	75	76	76	76
Std. Deviation	4.40	4.54	4.61	4.62	3.68	5.83	5.20	5.11	5.33	4.39	5.02	5.83
% URR>=65 w/ 3tx/wk	100%	100%	100%	97%	100%	97%	100%	100%	100%	100%	100%	100%



	Jan	Feb	Mar	Apr	May	Jun	Jul	Aug	Sep	Oct	Nov	Dec
# Pre Sys BP	37	39	40	41	41	40	41	40	40	42	41	42
# Pre Sys BP <= 165	28	32	33	34	35	37	39	34	33	37	36	35
Pop. Mean	148	149	148	148	144	145	142	145	145	144	144	144
Std. Deviation	20.5	18.1	18.0	18.8	20.1	19.8	17.5	16.1	17.5	17.6	18.3	19.3
% Pre Sys BP <= 165	76%	79%	83%	83%	85%	88%	95%	85%	83%	86%	88%	83%



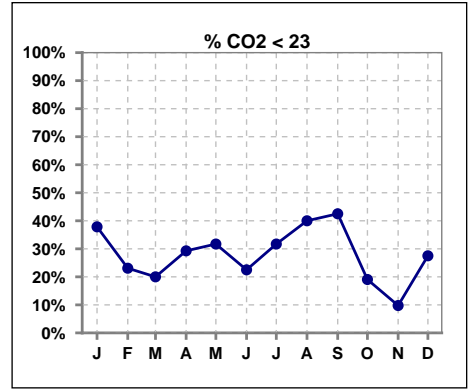
	Jan	Feb	Mar	Apr	May	Jun	Jul	Aug	Sep	Oct	Nov	Dec
# L processed/kg	37	39	40	41	41	40	41	40	40	42	41	42
# L processed/kg>=0.8	35	35	36	40	37	35	37	36	35	38	38	37
Pop. Mean	1	1	1	1	1	1	1	1	1	1	1	1
Std. Deviation	0.3	0.2	0.2	0.2	0.2	0.2	0.3	0.2	0.2	0.2	0.2	0.2
% L processed/kg>=0.8	85%	90%	90%	98%	90%	88%	90%	90%	88%	90%	93%	88%



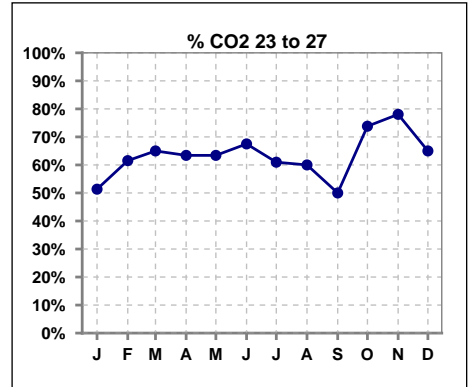
Methodology: a) All labs for 'Adequacy of Dialysis', 'Nutrition', 'Osteodystrophy', 'Anemia' and 'Diabetes' based on last value of month; b) BP's and #L processed are average of all values for month; c) Access data takes last access of month; d) Values for SGA and 'Infection Control' use most recent result.

**I. ADEQUACY OF DIALYSIS - CONT.**

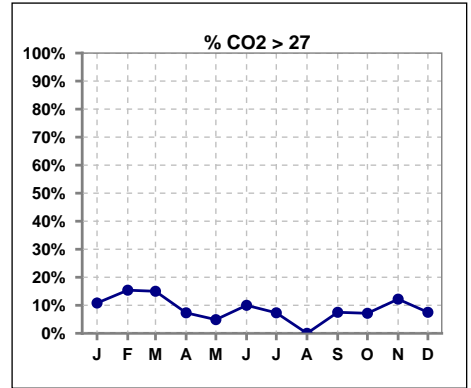
	Jan	Feb	Mar	Apr	May	Jun	Jul	Aug	Sep	Oct	Nov	Dec
# CO2	37	39	40	41	41	40	41	40	40	42	41	40
# CO2 < 23	14	9	8	12	13	9	13	16	17	8	4	11
Pop. Mean	23	24	25	24	24	24	24	23	24	24	25	24
Std. Deviation	3.12	2.86	3.06	2.60	2.30	2.35	2.58	2.49	2.76	2.62	2.33	2.50
<b>% CO2 &lt; 23</b>	<b>38%</b>	<b>23%</b>	<b>20%</b>	<b>29%</b>	<b>32%</b>	<b>23%</b>	<b>32%</b>	<b>40%</b>	<b>43%</b>	<b>19%</b>	<b>10%</b>	<b>28%</b>



	Jan	Feb	Mar	Apr	May	Jun	Jul	Aug	Sep	Oct	Nov	Dec
# CO2	37	39	40	41	41	40	41	40	40	42	41	40
# CO2 23 to 27	19	24	26	26	26	27	25	24	20	31	32	26
Pop. Mean	23	24	25	24	24	24	24	23	24	24	25	24
Std. Deviation	3.12	2.86	3.06	2.60	2.30	2.35	2.58	2.49	2.76	2.62	2.33	2.50
<b>% CO2 23 to 27</b>	<b>51%</b>	<b>62%</b>	<b>65%</b>	<b>63%</b>	<b>63%</b>	<b>68%</b>	<b>61%</b>	<b>60%</b>	<b>50%</b>	<b>74%</b>	<b>78%</b>	<b>65%</b>



	Jan	Feb	Mar	Apr	May	Jun	Jul	Aug	Sep	Oct	Nov	Dec
# CO2	37	39	40	41	41	40	41	40	40	42	41	40
# CO2 > 27	4	6	6	3	2	4	3	0	3	3	5	3
Pop. Mean	23	24	25	24	24	24	24	23	24	24	25	24
Std. Deviation	3.12	2.86	3.06	2.60	2.30	2.35	2.58	2.49	2.76	2.62	2.33	2.50
<b>% CO2 &gt; 27</b>	<b>11%</b>	<b>15%</b>	<b>15%</b>	<b>7%</b>	<b>5%</b>	<b>10%</b>	<b>7%</b>	<b>0%</b>	<b>8%</b>	<b>7%</b>	<b>12%</b>	<b>8%</b>

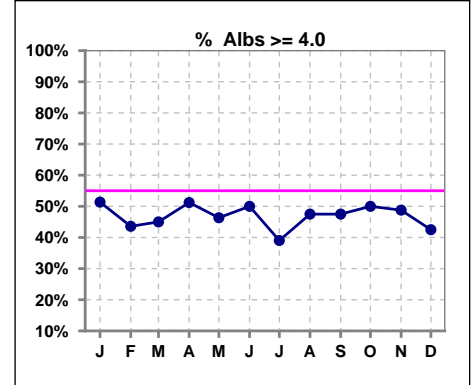


Methodology: a) All labs for 'Adequacy of Dialysis', 'Nutrition', 'Osteodystrophy', 'Anemia' and 'Diabetes' based on last value of month; b) BP's and #L processed are average of all values for month; c) Access data takes last access of month; d) Values for SGA and 'Infection Control' use most recent result.

\*Albumin values use BCG method - as of July 2001

**II. NUTRITION**

	Jan	Feb	Mar	Apr	May	Jun	Jul	Aug	Sep	Oct	Nov	Dec
# Albumin	37	39	40	41	41	40	41	40	40	42	41	40
# Albumin >= 4.0	19	17	18	21	19	20	16	19	19	21	20	17
Pop. Mean	4.0	3.9	3.9	3.9	4.0	3.9	3.9	3.9	3.9	3.9	3.9	3.9
Std. Deviation	0.32	0.32	0.29	0.34	0.31	0.32	0.36	0.33	0.32	0.34	0.35	0.31
% Alb >= 4.0	51%	44%	45%	51%	46%	50%	39%	48%	48%	50%	49%	43%

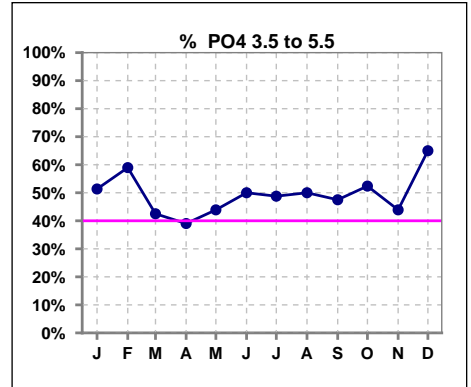


Methodology: a) All labs for 'Adequacy of Dialysis', 'Nutrition', 'Osteodystrophy', 'Anemia' and 'Diabetes' based on last value of month; b) BP's and #L processed are average of all values for month; c) Access data takes last access of month; d) Values for SGA and 'Infection Control' use most recent result.

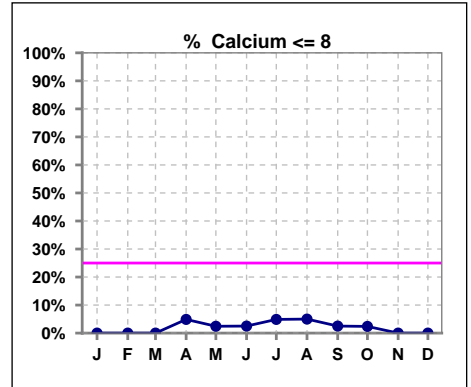
Lab methodology for PTH changed January 2012

**III. OSTEODYSTROPHY**

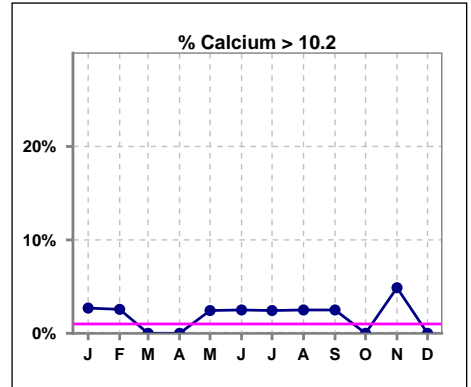
	Jan	Feb	Mar	Apr	May	Jun	Jul	Aug	Sep	Oct	Nov	Dec
# PO4	37	39	40	41	41	40	41	40	40	42	41	40
# PO4 3.5 to 5.5	19	23	17	16	18	20	20	20	19	22	18	26
Pop. Mean	5.5	5.5	5.7	6.0	5.7	5.4	5.8	5.9	5.8	5.9	5.6	5.3
Std. Deviation	1.64	1.65	1.65	1.94	1.77	1.68	1.72	2.26	1.79	1.95	2.01	1.51
% PO4 3.5 to 5.5	51%	59%	43%	39%	44%	50%	49%	50%	48%	52%	44%	65%



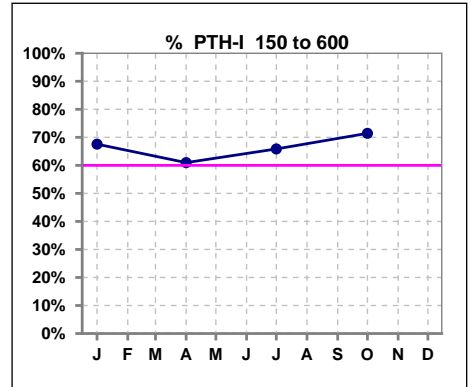
	Jan	Feb	Mar	Apr	May	Jun	Jul	Aug	Sep	Oct	Nov	Dec
# Calcium	37	39	40	41	41	40	41	40	40	42	41	40
# Calcium <= 8	0	0	0	2	1	1	2	2	1	1	0	0
Pop. Mean	9.2	9.2	9.2	9.0	9.1	9.2	9.1	9.0	9.1	9.1	9.2	9.2
Std. Deviation	0.49	0.50	0.53	0.59	0.64	0.56	0.70	0.55	0.60	0.50	0.55	0.40
% Calcium <= 8	0%	0%	0%	5%	2%	3%	5%	5%	3%	2%	0%	0%



	Jan	Feb	Mar	Apr	May	Jun	Jul	Aug	Sep	Oct	Nov	Dec
# Calcium	37	39	40	41	41	40	41	40	40	42	41	40
# Calcium > 10.2	1	1	0	0	1	1	1	1	1	0	2	0
Pop. Mean	9.2	9.2	9.2	9.0	9.1	9.2	9.1	9.0	9.1	9.1	9.2	9.2
Std. Deviation	0.49	0.50	0.53	0.59	0.64	0.56	0.70	0.55	0.60	0.50	0.55	0.40
% Calcium > 10.2	3%	3%	0%	0%	2%	3%	2%	3%	3%	0%	5%	0%



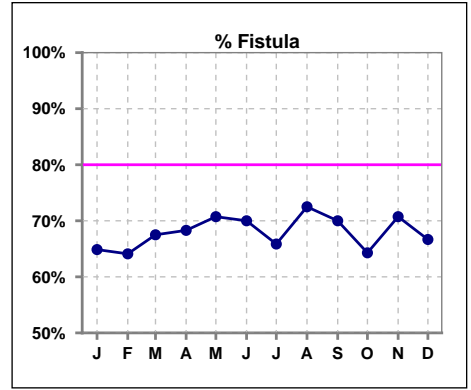
	Jan	Feb	Mar	Apr	May	Jun	Jul	Aug	Sep	Oct	Nov	Dec
# PTH-I	37			41			41			42		
# PTH-I 150 to 600	25			25			27			30		
Pop. Mean	399			596			501			510		
Std. Deviation	349			713			770			648		
% PTH-I 150 to 600	68%			61%			66%			71%		



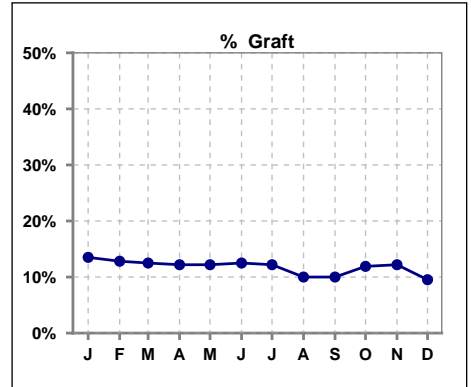
Methodology: a) All labs for 'Adequacy of Dialysis', 'Nutrition', 'Osteodystrophy', 'Anemia' and 'Diabetes' based on last value of month; b) BP's and #L processed are average of all values for month; c) Access data takes last access of month; d) Values for SGA and 'Infection Control' use most recent result.

**IV. ACCESS**

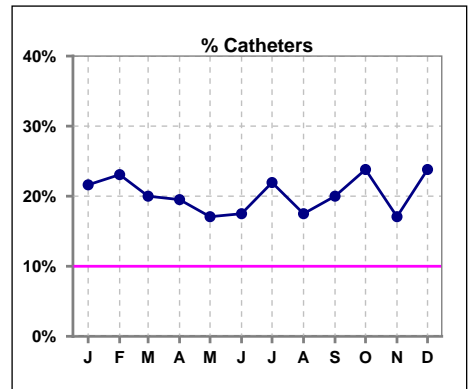
	Jan	Feb	Mar	Apr	May	Jun	Jul	Aug	Sep	Oct	Nov	Dec
# Access	37	39	40	41	41	40	41	40	40	42	41	42
# Fistula	24	25	27	28	29	28	27	29	28	27	29	28
% Fistula	65%	64%	68%	68%	71%	70%	66%	73%	70%	64%	71%	67%



	Jan	Feb	Mar	Apr	May	Jun	Jul	Aug	Sep	Oct	Nov	Dec
# Access	37	39	40	41	41	40	41	40	40	42	41	42
# Graft	5	5	5	5	5	5	5	4	4	5	5	4
% Graft	14%	13%	13%	12%	12%	13%	12%	10%	10%	12%	12%	10%



	Jan	Feb	Mar	Apr	May	Jun	Jul	Aug	Sep	Oct	Nov	Dec
# Access	37	39	40	41	41	40	41	40	40	42	41	42
# Catheters	8	9	8	8	7	7	9	7	8	10	7	10
% Catheters	22%	23%	20%	20%	17%	18%	22%	18%	20%	24%	17%	24%



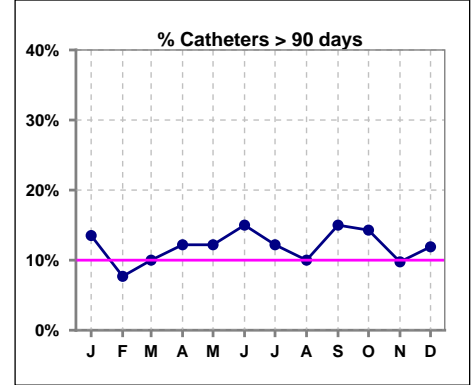
Methodology: a) All labs for 'Adequacy of Dialysis', 'Nutrition', 'Osteodystrophy', 'Anemia' and 'Diabetes' based on last value of month; b) BP's and #L processed are average of all values for month; c) Access data takes last access of month; d) Values for SGA and 'Infection Control' use most recent result.

**IV. ACCESS - CONT.**

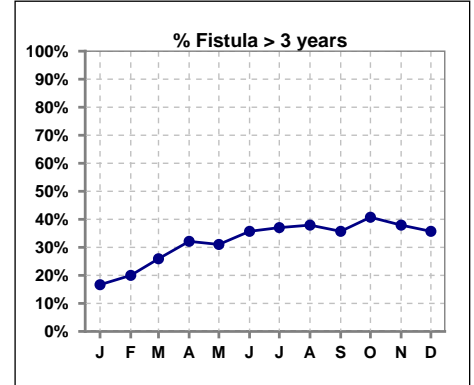
**Catheters > 90 days**

	Jan	Feb	Mar	Apr	May	Jun	Jul	Aug	Sep	Oct	Nov	Dec
<b># Access</b>	37	39	40	41	41	40	41	40	40	42	41	42
<b># Catheters</b>	5	3	4	5	5	6	5	4	6	6	4	5
<b>% Catheters</b>	14%	8%	10%	12%	12%	15%	12%	10%	15%	14%	10%	12%

**Definition:** Catheter in use on last treatment of the month



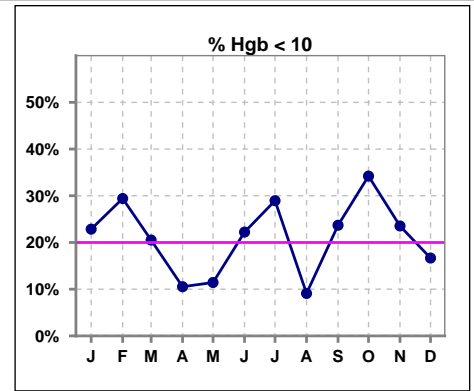
	Jan	Feb	Mar	Apr	May	Jun	Jul	Aug	Sep	Oct	Nov	Dec
<b># Fistula</b>	24	25	27	28	29	28	27	29	28	27	29	28
<b># Fistula &gt; 3 yrs</b>	4	5	7	9	9	10	10	11	10	11	11	10
<b>% Fistula &gt; 3 yrs</b>	17%	20%	26%	32%	31%	36%	37%	38%	36%	41%	38%	36%



**V. ANEMIA**

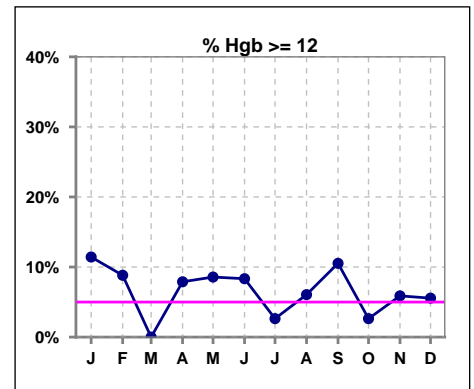
	Jan	Feb	Mar	Apr	May	Jun	Jul	Aug	Sep	Oct	Nov	Dec
# Hgb	35	34	39	38	35	36	38	33	38	38	34	36
# Hgb < 10	8	10	8	4	4	8	11	3	9	13	8	6
Pop. Mean	10.9	10.6	10.7	11.0	10.9	10.7	10.5	10.8	10.7	10.6	10.6	10.8
Std. Deviation	1.5	1.2	1.0	0.9	1.0	0.9	1.6	1.2	1.3	1.1	1.2	1.0
% Hgb < 10	23%	29%	21%	11%	11%	22%	29%	9%	24%	34%	24%	17%

Note: Excludes patients who received no ESA in month.



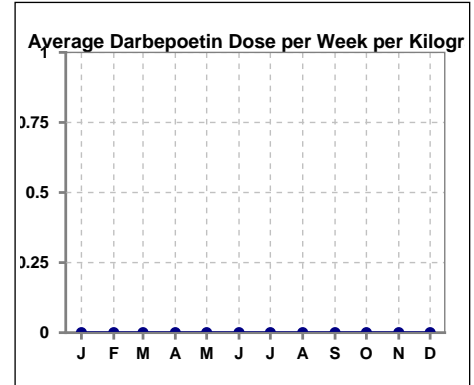
	Jan	Feb	Mar	Apr	May	Jun	Jul	Aug	Sep	Oct	Nov	Dec
# Hgb	35	34	39	38	35	36	38	33	38	38	34	36
# Hgb >= 12	4	3	0	3	3	3	1	2	4	1	2	2
Pop. Mean	10.9	10.6	10.7	11.0	10.9	10.7	10.5	10.8	10.7	10.6	10.6	10.8
Std. Deviation	1.5	1.2	1.0	0.9	1.0	0.9	1.6	1.2	1.3	1.1	1.2	1.0
% Hgb >= 12	11%	9%	0%	8%	9%	8%	3%	6%	11%	3%	6%	6%

Note: Excludes patients who received no ESA in month.



**Average Darbepoetin Dose per Week per Kilogram**

	Jan	Feb	Mar	Apr	May	Jun	Jul	Aug	Sep	Oct	Nov	Dec
# Average Darbepoetin	0	0	0	0	0	0	0	0	0	0	0	0

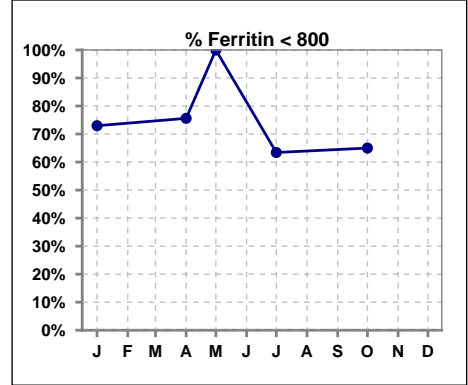




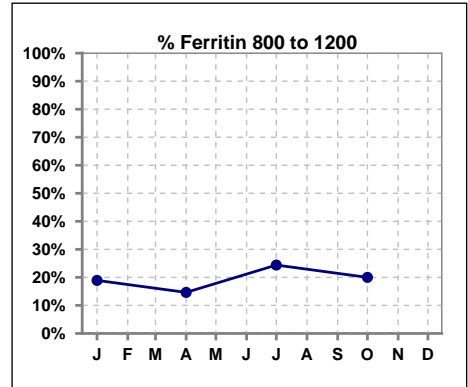
**V. ANEMIA - CONT.**

**Iron Profile**

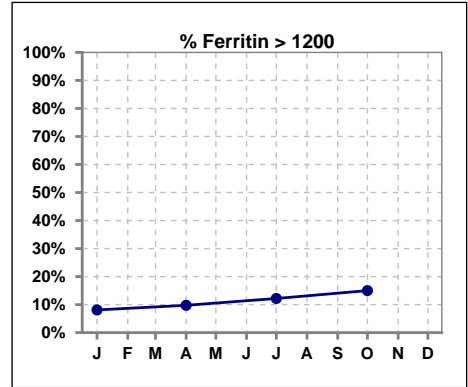
	Jan	Feb	Mar	Apr	May	Jun	Jul	Aug	Sep	Oct	Nov	Dec
# Ferritin	37			41	1		41			40		
# Ferritin < 800	27			31	1		26			26		
Pop. Mean	554			613	165		647			697		
Std. Deviation	421			437	0		471			588		
<b>% Ferritin &lt; 800</b>	<b>73%</b>			<b>76%</b>	<b>100%</b>		<b>63%</b>			<b>65%</b>		



	Jan	Feb	Mar	Apr	May	Jun	Jul	Aug	Sep	Oct	Nov	Dec
# Ferritin	37			41	1		41			40		
# Ferritin 800 to 1200	7			6			10			8		
Pop. Mean	554			613	165		647			697		
Std. Deviation	421			437	0		471			588		
<b>% Ferritin 800 to 1200</b>	<b>19%</b>			<b>15%</b>			<b>24%</b>			<b>20%</b>		



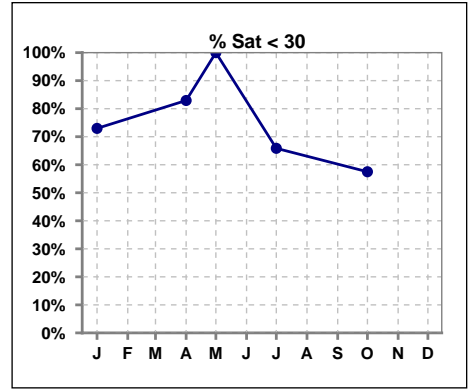
	Jan	Feb	Mar	Apr	May	Jun	Jul	Aug	Sep	Oct	Nov	Dec
# Ferritin	37			41	1		41			40		
# Ferritin > 1200	3			4			5			6		
Pop. Mean	554			613	165		647			697		
Std. Deviation	421			437	0		471			588		
<b>% Ferritin &gt; 1200</b>	<b>8%</b>			<b>10%</b>			<b>12%</b>			<b>15%</b>		



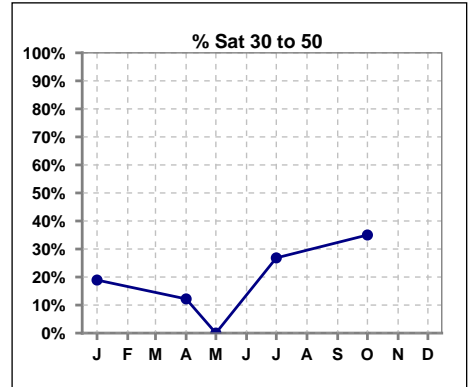
Methodology: a) All labs for 'Adequacy of Dialysis', 'Nutrition', 'Osteodystrophy', 'Anemia' and 'Diabetes' based on last value of month; b) BP's and #L processed are average of all values for month; c) Access data takes last access of month; d) Values for SGA and 'Infection Control' use most recent result.

**V. ANEMIA - CONT.**

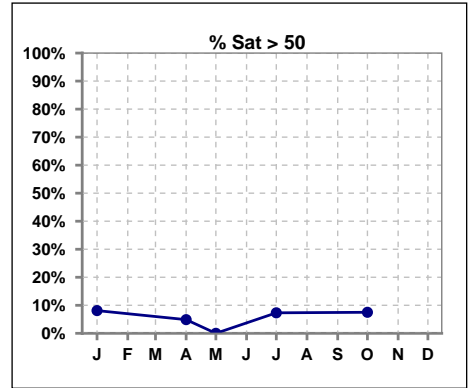
	Jan	Feb	Mar	Apr	May	Jun	Jul	Aug	Sep	Oct	Nov	Dec
# % Sat	37			41	2		41			40		
# % Sat < 30	27			34	2		27			23		
Pop. Mean	26			25	17		29			30		
Std. Deviation	14			16	10		13			18		
<b>% % Sat &lt; 30</b>	<b>73%</b>			<b>83%</b>	<b>100%</b>		<b>66%</b>			<b>58%</b>		



	Jan	Feb	Mar	Apr	May	Jun	Jul	Aug	Sep	Oct	Nov	Dec
# % Sat	37			41	2		41			40		
# % Sat 30 to 50	7			5	0		11			14		
Pop. Mean	26			25	17		29			30		
Std. Deviation	14			16	10		13			18		
<b>% % Sat 30 to 50</b>	<b>19%</b>			<b>12%</b>	<b>0%</b>		<b>27%</b>			<b>35%</b>		

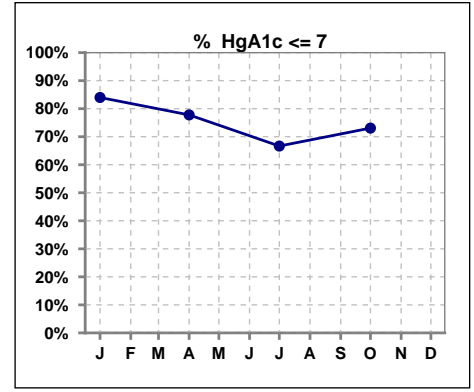


	Jan	Feb	Mar	Apr	May	Jun	Jul	Aug	Sep	Oct	Nov	Dec
# % Sat	37			41	2		41			40		
# % Sat > 50	3			2	0		3			3		
Pop. Mean	26			25	17		29			30		
Std. Deviation	14			16	10		13			18		
<b>% % Sat &gt; 50</b>	<b>8%</b>			<b>5%</b>	<b>0%</b>		<b>7%</b>			<b>8%</b>		



**VI. Diabetes**

	Jan	Feb	Mar	Apr	May	Jun	Jul	Aug	Sep	Oct	Nov	Dec
# HgA1c	25			27			24			26		
# HgA1c <= 7	21			21			16			19		
Pop. Mean	6.4			6.3			6.5			6.4		
Std. Deviation	1.15			1.11			1.16			1.06		
<b>% HgA1c &lt;= 7</b>	<b>84%</b>			<b>78%</b>			<b>67%</b>			<b>73%</b>		

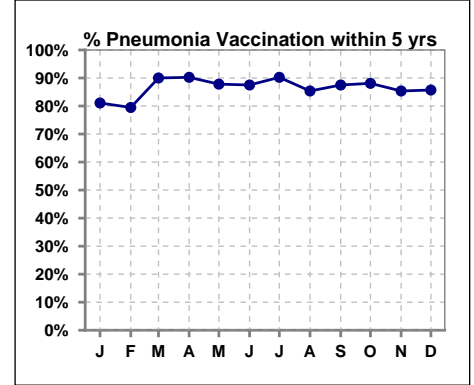


Methodology: a) All labs for 'Adequacy of Dialysis', 'Nutrition', 'Osteodystrophy', 'Anemia' and 'Diabetes' based on last value of month; b) BP's and #L processed are average of all values for month; c) Access data takes last access of month; d) Values for SGA and 'Infection Control' use most recent result.

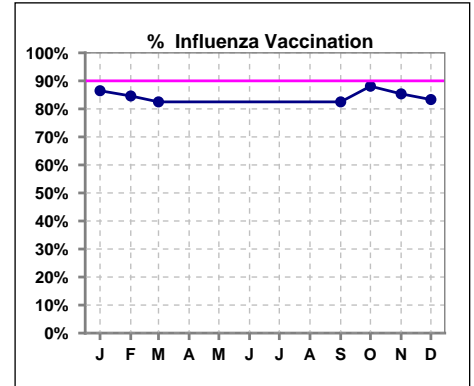
**VII. Infection Control**

**Pneumonia vaccination within the past five years**

	Jan	Feb	Mar	Apr	May	Jun	Jul	Aug	Sep	Oct	Nov	Dec
# Patient	37	39	40	41	41	40	41	41	40	42	41	42
# Pneumonia	30	31	36	37	36	35	37	35	35	37	35	36
% Pneumonia	81%	79%	90%	90%	88%	88%	90%	85%	88%	88%	85%	86%



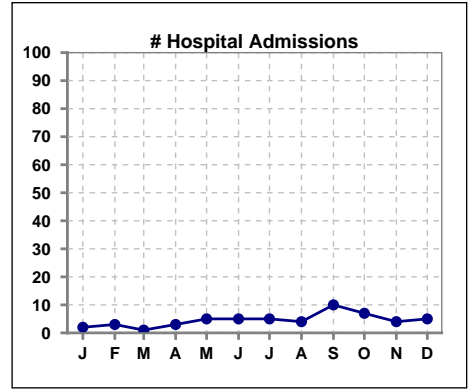
	Jan	Feb	Mar	Apr	May	Jun	Jul	Aug	Sep	Oct	Nov	Dec
# Patient	37	39	40						40	42	41	42
# Influenza	32	33	33						33	37	35	35
% Influenza	86%	85%	83%						83%	88%	85%	83%



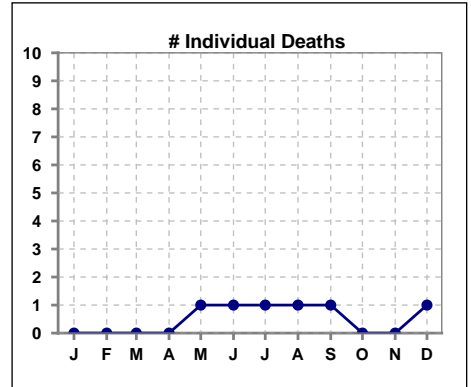
Methodology: a) All labs for 'Adequacy of Dialysis', 'Nutrition', 'Osteodystrophy', 'Anemia' and 'Diabetes' based on last value of month; b) BP's and #L processed are average of all values for month; c) Access data takes last access of month; d) Values for SGA and 'Infection Control' use most recent result.

**VIII. Outcome measures**

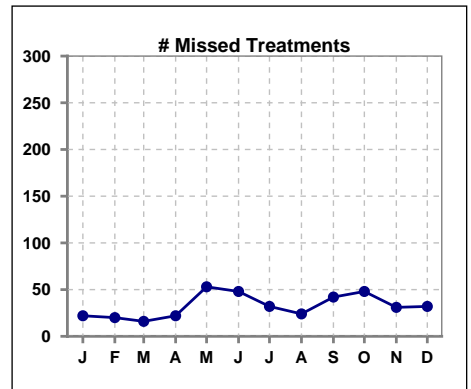
	Jan	Feb	Mar	Apr	May	Jun	Jul	Aug	Sep	Oct	Nov	Dec
# Patient	37	39	40	41	41	40	41	41	40	42	41	42
# Hospital Admissions	2	3	1	3	5	5	5	4	10	7	4	5



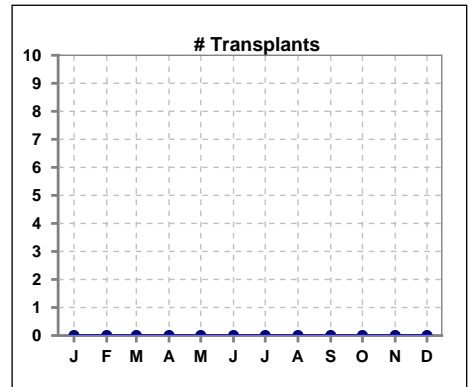
	Jan	Feb	Mar	Apr	May	Jun	Jul	Aug	Sep	Oct	Nov	Dec
# Patient	37	39	40	41	41	40	41	41	40	42	41	42
# Individual Deaths	0	0	0	0	1	1	1	1	1	0	0	1



	Jan	Feb	Mar	Apr	May	Jun	Jul	Aug	Sep	Oct	Nov	Dec
# Patient	37	39	40	41	41	40	41	41	40	42	41	42
# Missed Treatments	22	20	16	22	53	48	32	24	42	48	31	32



	Jan	Feb	Mar	Apr	May	Jun	Jul	Aug	Sep	Oct	Nov	Dec
# Patient	37	39	40	41	41	40	41	41	40	42	41	42
# Transplants	0	0	0	0	0	0	0	0	0	0	0	0



Methodology: a) All labs for 'Adequacy of Dialysis', 'Nutrition', 'Osteodystrophy', 'Anemia' and 'Diabetes' based on last value of month; b) BP's and #L processed are average of all values for month; c) Access data takes last access of month; d) Values for SGA and 'Infection Control' use most recent result.