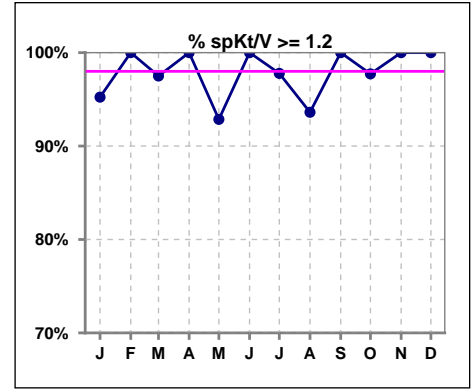
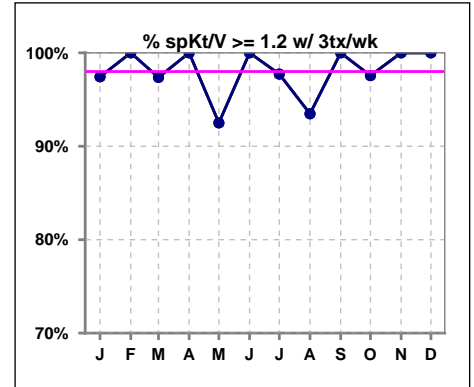


I. ADEQUACY OF DIALYSIS

	Jan	Feb	Mar	Apr	May	Jun	Jul	Aug	Sep	Oct	Nov	Dec
# spKt/V	42	42	40	39	42	43	45	47	40	44	45	42
# spKt/V >= 1.2	40	42	39	39	39	43	44	44	40	43	45	42
Pop. Mean	1.57	1.59	1.57	1.57	1.51	1.59	1.52	1.51	1.55	1.50	1.57	1.53
Std. Deviation	0.29	0.30	0.28	0.23	0.25	0.22	0.20	0.31	0.27	0.25	0.22	0.21
% spKt/V >= 1.2	95%	100%	98%	100%	93%	100%	98%	94%	100%	98%	100%	100%



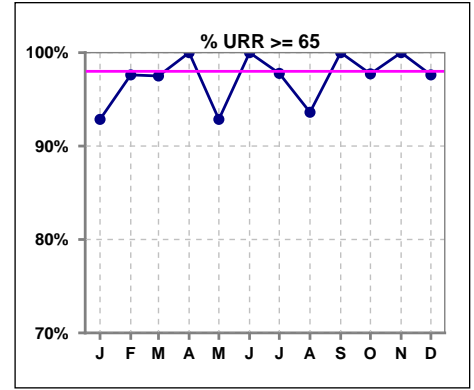
	Jan	Feb	Mar	Apr	May	Jun	Jul	Aug	Sep	Oct	Nov	Dec
# spKt/V w/ 3tx/wk	39	40	38	38	40	41	44	46	39	41	43	41
# spKt/V >= 1.2 w/3tx/wk	38	40	37	38	37	41	43	43	39	40	43	41
Pop. Mean	1.57	1.58	1.57	1.57	1.51	1.57	1.52	1.51	1.55	1.50	1.56	1.52
Std. Deviation	0.28	0.31	0.28	0.23	0.25	0.21	0.20	0.31	0.27	0.26	0.22	0.21
% >= 1.2 w/3tx/wk	97%	100%	97%	100%	93%	100%	98%	93%	100%	98%	100%	100%



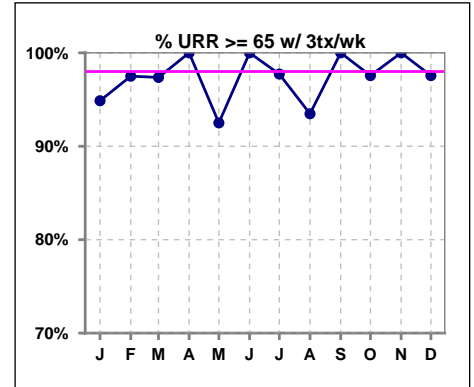
Methodology: a) All labs for 'Adequacy of Dialysis', 'Nutrition', 'Osteodystrophy', 'Anemia' and 'Diabetes' based on last value of month; b) BP's and #L processed are average of all values for month; c) Access data takes last access of month; d) Values for SGA and 'Infection Control' use most recent result.

I. ADEQUACY OF DIALYSIS - CONT.

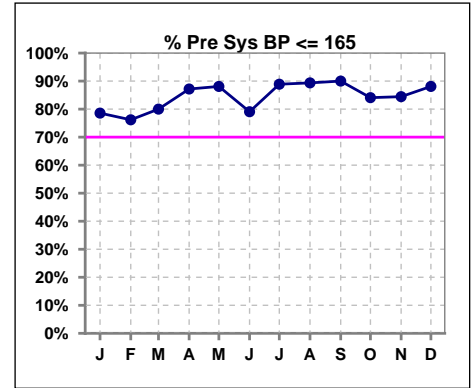
	Jan	Feb	Mar	Apr	May	Jun	Jul	Aug	Sep	Oct	Nov	Dec
# URR	42	42	40	39	42	43	45	47	40	44	45	42
# URR >= 65	39	41	39	39	39	43	44	44	40	43	45	41
Pop. Mean	74	75	74	74	73	75	73	72	74	73	74	74
Std. Deviation	6.06	5.60	7.28	4.77	6.06	4.45	4.41	8.57	5.10	5.28	4.81	4.51
% URR >= 65	93%	98%	98%	100%	93%	100%	98%	94%	100%	98%	100%	98%



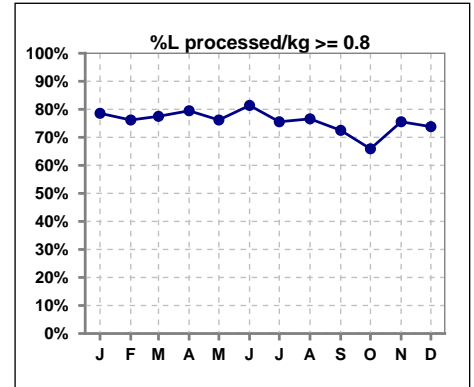
	Jan	Feb	Mar	Apr	May	Jun	Jul	Aug	Sep	Oct	Nov	Dec
# URR w/ 3tx/wk	39	40	38	38	40	41	44	46	39	41	43	41
# URR>=65 w/ 3tx/wk	37	39	37	38	37	41	43	43	39	40	43	40
Pop. Mean	74	74	74	74	73	74	73	72	74	73	74	74
Std. Deviation	5.66	5.72	7.43	4.79	6.10	4.34	4.44	8.63	5.09	5.45	4.81	4.52
% URR>=65 w/ 3tx/wk	95%	98%	97%	100%	93%	100%	98%	93%	100%	98%	100%	98%



	Jan	Feb	Mar	Apr	May	Jun	Jul	Aug	Sep	Oct	Nov	Dec
# Pre Sys BP	42	42	40	39	42	43	45	47	40	44	45	42
# Pre Sys BP <= 165	33	33	33	34	37	35	40	43	36	37	40	38
Pop. Mean	147	146	148	144	141	142	142	143	142	144	146	146
Std. Deviation	20.2	22.7	21.7	21.2	22.4	21.5	19.9	18.6	19.1	19.5	21.3	20.8
%Pre Sys BP <=165	79%	76%	80%	87%	88%	79%	89%	89%	90%	84%	84%	88%



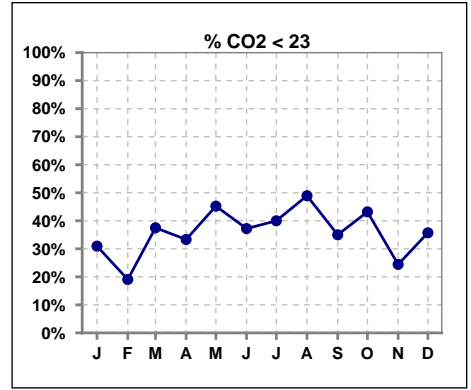
	Jan	Feb	Mar	Apr	May	Jun	Jul	Aug	Sep	Oct	Nov	Dec
# L processed/kg	42	42	40	39	42	43	45	47	40	44	45	42
# L processed/kg>=0.8	33	32	31	31	32	35	34	36	29	29	34	31
Pop. Mean	1	1	1	1	1	1	1	1	1	1	1	1
Std. Deviation	0.3	0.3	0.2	1.7	0.2	0.2	0.2	0.2	0.3	0.3	0.2	0.2
% L processed/kg>=0.8	79%	76%	78%	79%	76%	81%	76%	77%	73%	66%	76%	74%



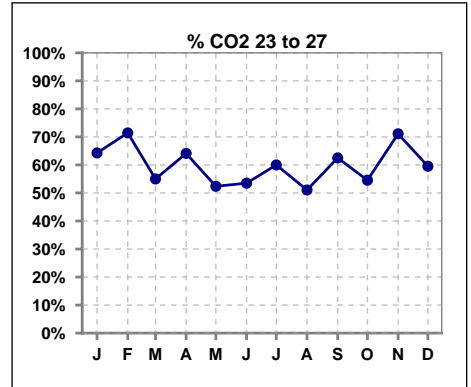
Methodology: a) All labs for 'Adequacy of Dialysis', 'Nutrition', 'Osteodystrophy', 'Anemia' and 'Diabetes' based on last value of month; b) BP's and #L processed are average of all values for month; c) Access data takes last access of month; d) Values for SGA and 'Infection Control' use most recent result.

I. ADEQUACY OF DIALYSIS - CONT.

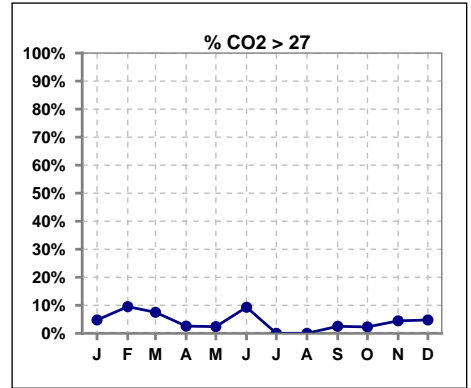
	Jan	Feb	Mar	Apr	May	Jun	Jul	Aug	Sep	Oct	Nov	Dec
# CO2	42	42	40	39	42	43	45	47	40	44	45	42
# CO2 < 23	13	8	15	13	19	16	18	23	14	19	11	15
Pop. Mean	23	24	24	23	22	23	23	22	23	23	24	23
Std. Deviation	2.20	2.86	2.68	2.72	2.95	2.67	2.69	2.11	2.59	2.48	2.33	2.85
% CO2 < 23	31%	19%	38%	33%	45%	37%	40%	49%	35%	43%	24%	36%



	Jan	Feb	Mar	Apr	May	Jun	Jul	Aug	Sep	Oct	Nov	Dec
# CO2	42	42	40	39	42	43	45	47	40	44	45	42
# CO2 23 to 27	27	30	22	25	22	23	27	24	25	24	32	25
Pop. Mean	23	24	24	23	22	23	23	22	23	23	24	23
Std. Deviation	2.20	2.86	2.68	2.72	2.95	2.67	2.69	2.11	2.59	2.48	2.33	2.85
% CO2 23 to 27	64%	71%	55%	64%	52%	53%	60%	51%	63%	55%	71%	60%



	Jan	Feb	Mar	Apr	May	Jun	Jul	Aug	Sep	Oct	Nov	Dec
# CO2	42	42	40	39	42	43	45	47	40	44	45	42
# CO2 > 27	2	4	3	1	1	4	0	0	1	1	2	2
Pop. Mean	23	24	24	23	22	23	23	22	23	23	24	23
Std. Deviation	2.20	2.86	2.68	2.72	2.95	2.67	2.69	2.11	2.59	2.48	2.33	2.85
% CO2 > 27	5%	10%	8%	3%	2%	9%	0%	0%	3%	2%	4%	5%

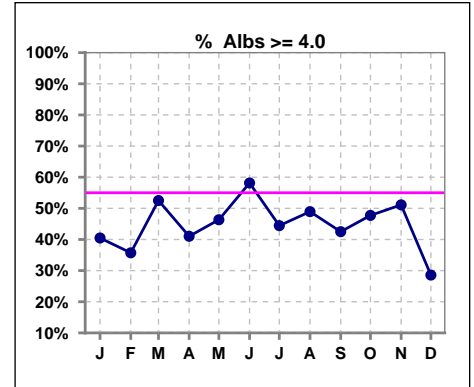


Methodology: a) All labs for 'Adequacy of Dialysis', 'Nutrition', 'Osteodystrophy', 'Anemia' and 'Diabetes' based on last value of month; b) BP's and #L processed are average of all values for month; c) Access data takes last access of month; d) Values for SGA and 'Infection Control' use most recent result.

*Albumin values use BCG method - as of July 2001

II. NUTRITION

	Jan	Feb	Mar	Apr	May	Jun	Jul	Aug	Sep	Oct	Nov	Dec
# Albumin	42	42	40	39	41	43	45	47	40	44	45	42
# Albumin >= 4.0	17	15	21	16	19	25	20	23	17	21	23	12
Pop. Mean	3.9	3.8	3.9	3.8	3.8	4.0	3.9	3.9	3.9	4.0	4.0	3.8
Std. Deviation	0.31	0.31	0.32	0.32	0.31	0.36	0.31	0.36	0.29	0.25	0.27	0.29
% Alb >= 4.0	40%	36%	53%	41%	46%	58%	44%	49%	43%	48%	51%	29%

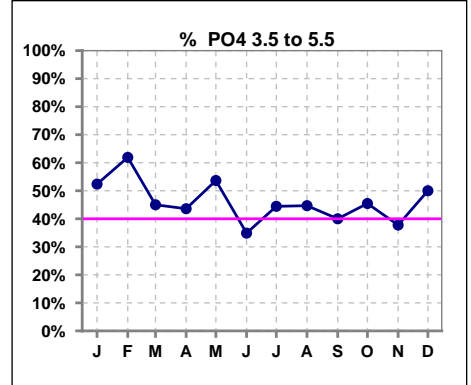


Methodology: a) All labs for 'Adequacy of Dialysis', 'Nutrition', 'Osteodystrophy', 'Anemia' and 'Diabetes' based on last value of month; b) BP's and #L processed are average of all values for month; c) Access data takes last access of month; d) Values for SGA and 'Infection Control' use most recent result.

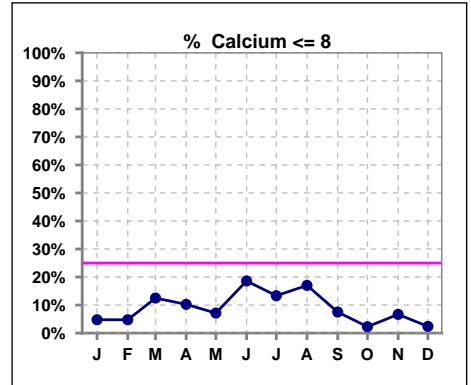
Lab methodology for PTH changed January 2012

III. OSTEODYSTROPHY

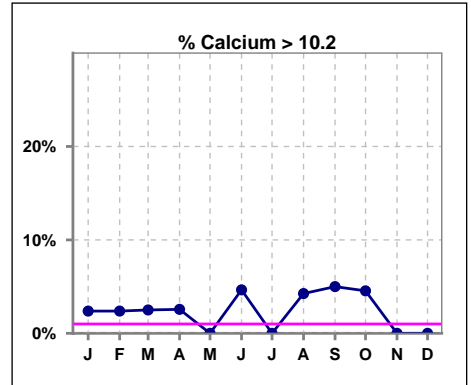
	Jan	Feb	Mar	Apr	May	Jun	Jul	Aug	Sep	Oct	Nov	Dec
# PO4	42	42	40	39	41	43	45	47	40	44	45	42
# PO4 3.5 to 5.5	22	26	18	17	22	15	20	21	16	20	17	21
Pop. Mean	5.6	5.5	5.4	5.3	5.4	5.6	5.6	6.1	5.8	6.0	5.8	5.6
Std. Deviation	1.41	1.68	1.53	1.55	1.42	1.78	1.73	1.85	1.56	1.51	1.75	1.40
% PO4 3.5 to 5.5	52%	62%	45%	44%	54%	35%	44%	45%	40%	45%	38%	50%



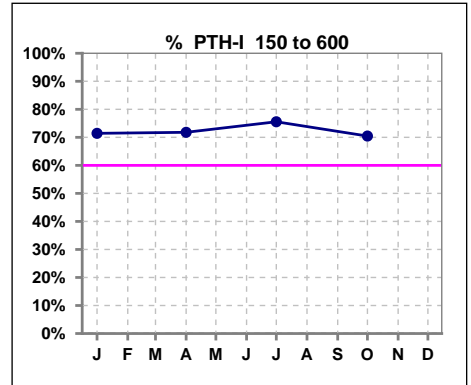
	Jan	Feb	Mar	Apr	May	Jun	Jul	Aug	Sep	Oct	Nov	Dec
# Calcium	42	42	40	39	42	43	45	47	40	44	45	42
# Calcium <= 8	2	2	5	4	3	8	6	8	3	1	3	1
Pop. Mean	9.1	9.1	9.1	9.1	9.0	9.1	9.0	9.0	9.2	9.2	9.1	9.2
Std. Deviation	0.62	0.61	0.70	0.72	0.68	0.86	0.66	0.85	0.89	0.66	0.62	0.62
% Calcium <= 8	5%	5%	13%	10%	7%	19%	13%	17%	8%	2%	7%	2%



	Jan	Feb	Mar	Apr	May	Jun	Jul	Aug	Sep	Oct	Nov	Dec
# Calcium	42	42	40	39	42	43	45	47	40	44	45	42
# Calcium > 10.2	1	1	1	1	0	2	0	2	2	2	0	0
Pop. Mean	9.1	9.1	9.1	9.1	9.0	9.1	9.0	9.0	9.2	9.2	9.1	9.2
Std. Deviation	0.62	0.61	0.70	0.72	0.68	0.86	0.66	0.85	0.89	0.66	0.62	0.62
% Calcium > 10.2	2%	2%	3%	3%	0%	5%	0%	4%	5%	5%	0%	0%



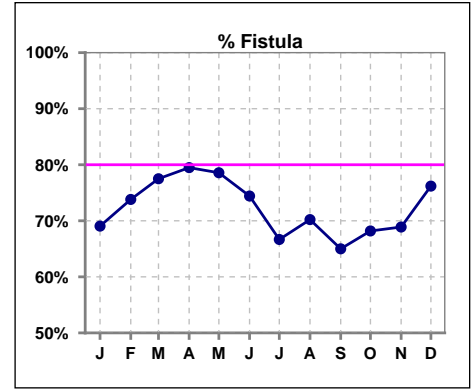
	Jan	Feb	Mar	Apr	May	Jun	Jul	Aug	Sep	Oct	Nov	Dec
# PTH-I	42			39			45			44		
# PTH-I 150 to 600	30			28			34			31		
Pop. Mean	617			525			491			492		
Std. Deviation	748			715			513			485		
% PTH-I 150 to 600	71%			72%			76%			70%		



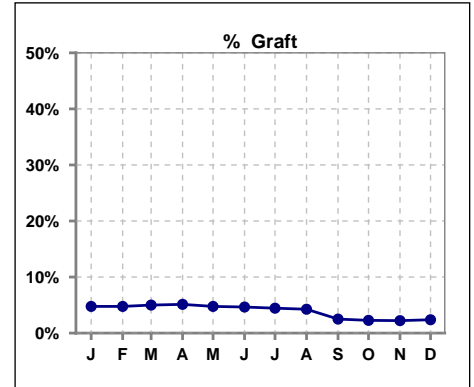
Methodology: a) All labs for 'Adequacy of Dialysis', 'Nutrition', 'Osteodystrophy', 'Anemia' and 'Diabetes' based on last value of month; b) BP's and #L processed are average of all values for month; c) Access data takes last access of month; d) Values for SGA and 'Infection Control' use most recent result.

IV. ACCESS

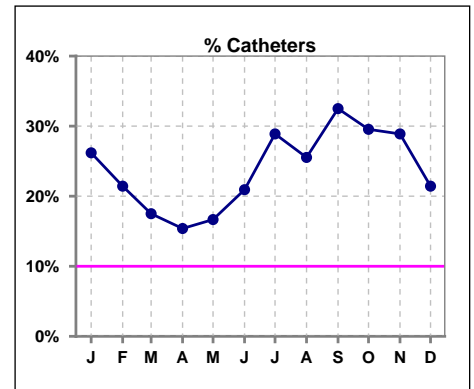
	Jan	Feb	Mar	Apr	May	Jun	Jul	Aug	Sep	Oct	Nov	Dec
# Access	42	42	40	39	42	43	45	47	40	44	45	42
# Fistula	29	31	31	31	33	32	30	33	26	30	31	32
% Fistula	69%	74%	78%	79%	79%	74%	67%	70%	65%	68%	69%	76%



	Jan	Feb	Mar	Apr	May	Jun	Jul	Aug	Sep	Oct	Nov	Dec
# Access	42	42	40	39	42	43	45	47	40	44	45	42
# Graft	2	2	2	2	2	2	2	2	1	1	1	1
% Graft	5%	5%	5%	5%	5%	5%	4%	4%	3%	2%	2%	2%



	Jan	Feb	Mar	Apr	May	Jun	Jul	Aug	Sep	Oct	Nov	Dec
# Access	42	42	40	39	42	43	45	47	40	44	45	42
# Catheters	11	9	7	6	7	9	13	12	13	13	13	9
% Catheters	26%	21%	18%	15%	17%	21%	29%	26%	33%	30%	29%	21%



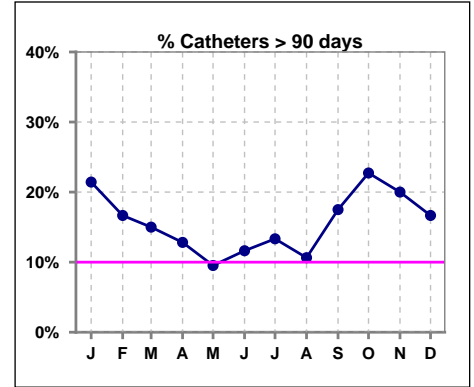
Methodology: a) All labs for 'Adequacy of Dialysis', 'Nutrition', 'Osteodystrophy', 'Anemia' and 'Diabetes' based on last value of month; b) BP's and #L processed are average of all values for month; c) Access data takes last access of month; d) Values for SGA and 'Infection Control' use most recent result.

IV. ACCESS - CONT.

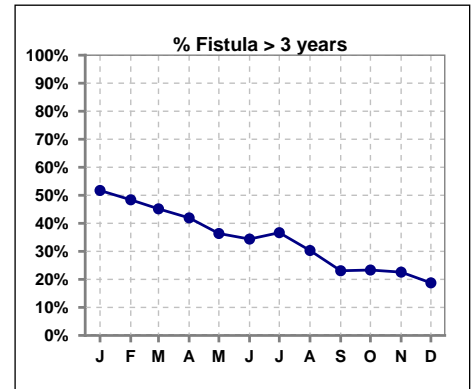
Catheters > 90 days

	Jan	Feb	Mar	Apr	May	Jun	Jul	Aug	Sep	Oct	Nov	Dec
# Access	42	42	40	39	42	43	45	47	40	44	45	42
# Catheters	9	7	6	5	4	5	6	5	7	10	9	7
% Catheters	21%	17%	15%	13%	10%	12%	13%	11%	18%	23%	20%	17%

Definition: Catheter in use on last treatment of the month



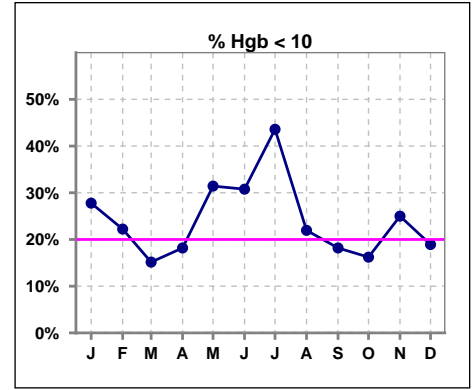
	Jan	Feb	Mar	Apr	May	Jun	Jul	Aug	Sep	Oct	Nov	Dec
# Fistula	29	31	31	31	33	32	30	33	26	30	31	32
# Fistula > 3 yrs	15	15	14	13	12	11	11	10	6	7	7	6
% Fistula > 3 yrs	52%	48%	45%	42%	36%	34%	37%	30%	23%	23%	23%	19%



V. ANEMIA

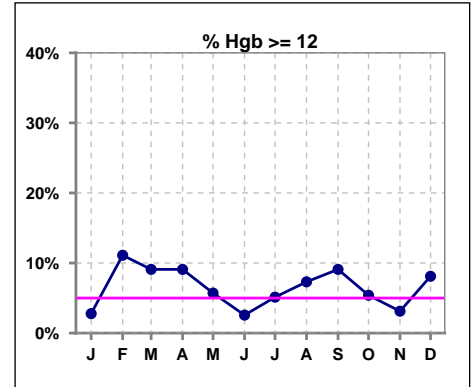
	Jan	Feb	Mar	Apr	May	Jun	Jul	Aug	Sep	Oct	Nov	Dec
# Hgb	36	36	33	33	35	39	39	41	33	37	32	37
# Hgb < 10	10	8	5	6	11	12	17	9	6	6	8	7
Pop. Mean	10.6	10.8	11.0	10.6	10.3	10.3	10.3	10.5	10.8	10.8	10.4	10.7
Std. Deviation	0.8	1.1	1.2	1.2	1.4	1.3	1.3	1.3	1.7	1.1	1.0	0.9
% Hgb < 10	28%	22%	15%	18%	31%	31%	44%	22%	18%	16%	25%	19%

Note: Excludes patients who received no ESA in month.



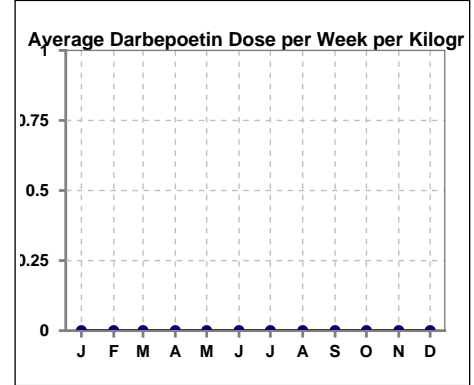
	Jan	Feb	Mar	Apr	May	Jun	Jul	Aug	Sep	Oct	Nov	Dec
# Hgb	36	36	33	33	35	39	39	41	33	37	32	37
# Hgb >= 12	1	4	3	3	2	1	2	3	3	2	1	3
Pop. Mean	10.6	10.8	11.0	10.6	10.3	10.3	10.3	10.5	10.8	10.8	10.4	10.7
Std. Deviation	0.8	1.1	1.2	1.2	1.4	1.3	1.3	1.3	1.7	1.1	1.0	0.9
% Hgb >= 12	3%	11%	9%	9%	6%	3%	5%	7%	9%	5%	3%	8%

Note: Excludes patients who received no ESA in month.



Average Darbepoetin Dose per Week per Kilogram

	Jan	Feb	Mar	Apr	May	Jun	Jul	Aug	Sep	Oct	Nov	Dec
# Average Darbepoetin	0	0	0	0	0	0	0	0	0	0	0	0

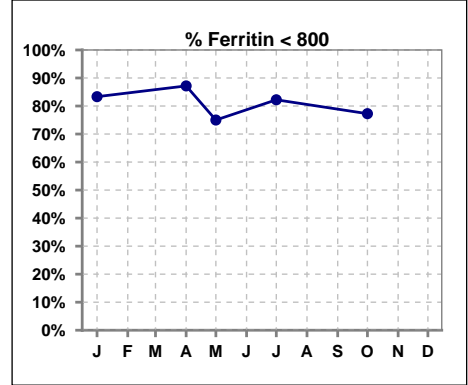


Methodology: a) All labs for 'Adequacy of Dialysis', 'Nutrition', 'Osteodystrophy', 'Anemia' and 'Diabetes' based on last value of month; b) BP's and #L processed are average of all values for month; c) Access data takes last access of month; d) Values for SGA and 'Infection Control' use most recent result.

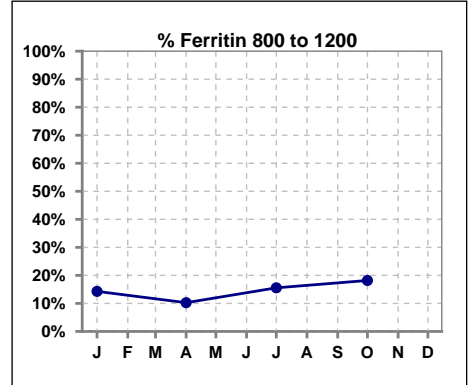
V. ANEMIA - CONT.

Iron Profile

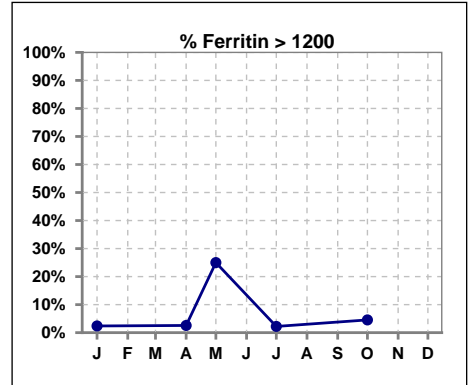
	Jan	Feb	Mar	Apr	May	Jun	Jul	Aug	Sep	Oct	Nov	Dec
# Ferritin	42			39	4		45			44		
# Ferritin < 800	35			34	3		37			34		
Pop. Mean	500			472	516		502			488		
Std. Deviation	343			309	552		363			338		
% Ferritin < 800	83%			87%	75%		82%			77%		



	Jan	Feb	Mar	Apr	May	Jun	Jul	Aug	Sep	Oct	Nov	Dec
# Ferritin	42			39	4		45			44		
# Ferritin 800 to 1200	6			4			7			8		
Pop. Mean	500			472	516		502			488		
Std. Deviation	343			309	552		363			338		
% Ferritin 800 to 1200	14%			10%			16%			18%		



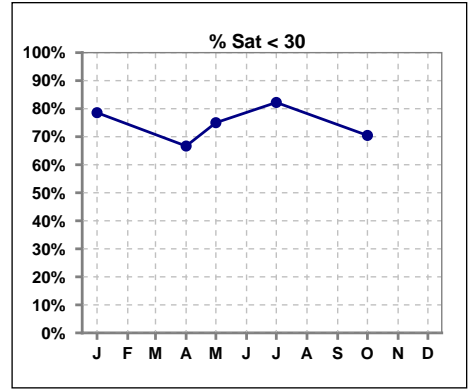
	Jan	Feb	Mar	Apr	May	Jun	Jul	Aug	Sep	Oct	Nov	Dec
# Ferritin	42			39	4		45			44		
# Ferritin > 1200	1			1	1		1			2		
Pop. Mean	500			472	516		502			488		
Std. Deviation	343			309	552		363			338		
% Ferritin > 1200	2%			3%	25%		2%			5%		



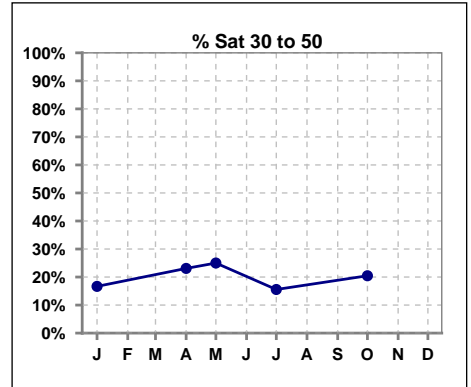
Methodology: a) All labs for 'Adequacy of Dialysis', 'Nutrition', 'Osteodystrophy', 'Anemia' and 'Diabetes' based on last value of month; b) BP's and #L processed are average of all values for month; c) Access data takes last access of month; d) Values for SGA and 'Infection Control' use most recent result.

V. ANEMIA - CONT.

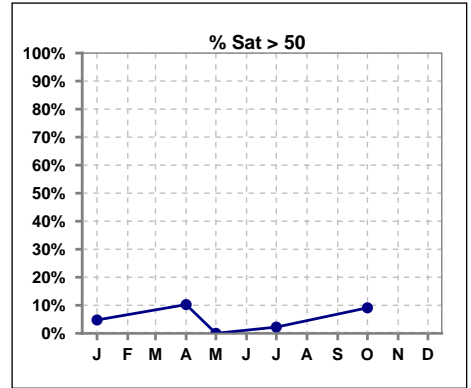
	Jan	Feb	Mar	Apr	May	Jun	Jul	Aug	Sep	Oct	Nov	Dec
# % Sat	42			39	4		45			44		
# % Sat < 30	33			26	3		37			31		
Pop. Mean	25			26	22		21			26		
Std. Deviation	12			16	10		9			15		
% % Sat < 30	79%			67%	75%		82%			70%		



	Jan	Feb	Mar	Apr	May	Jun	Jul	Aug	Sep	Oct	Nov	Dec
# % Sat	42			39	4		45			44		
# % Sat 30 to 50	7			9	1		7			9		
Pop. Mean	25			26	22		21			26		
Std. Deviation	12			16	10		9			15		
% % Sat 30 to 50	17%			23%	25%		16%			20%		

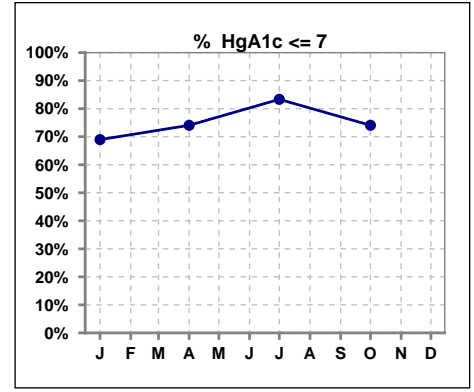


	Jan	Feb	Mar	Apr	May	Jun	Jul	Aug	Sep	Oct	Nov	Dec
# % Sat	42			39	4		45			44		
# % Sat > 50	2			4	0		1			4		
Pop. Mean	25			26	22		21			26		
Std. Deviation	12			16	10		9			15		
% % Sat > 50	5%			10%	0%		2%			9%		



VI. Diabetes

	Jan	Feb	Mar	Apr	May	Jun	Jul	Aug	Sep	Oct	Nov	Dec
# HgA1c	29			27			30			27		
# HgA1c <= 7	20			20			25			20		
Pop. Mean	6.6			6.2			6.1			6.4		
Std. Deviation	1.46			1.34			1.15			1.51		
% HgA1c <= 7	69%			74%			83%			74%		

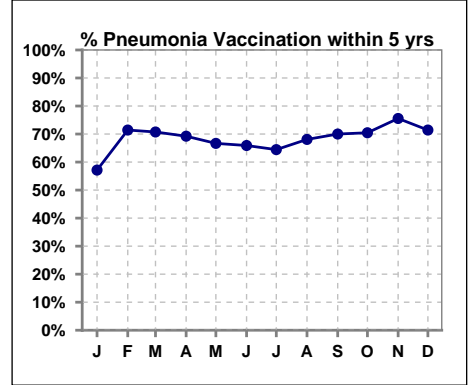


Methodology: a) All labs for 'Adequacy of Dialysis', 'Nutrition', 'Osteodystrophy', 'Anemia' and 'Diabetes' based on last value of month; b) BP's and #L processed are average of all values for month; c) Access data takes last access of month; d) Values for SGA and 'Infection Control' use most recent result.

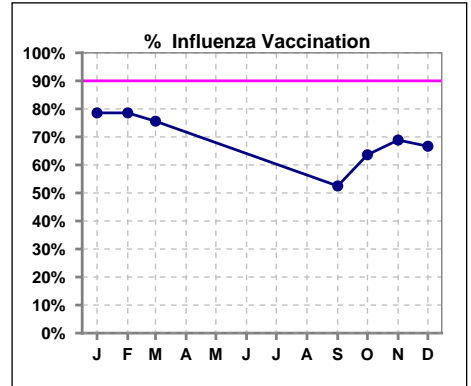
VII. Infection Control

Pneumonia vaccination within the past five years

	Jan	Feb	Mar	Apr	May	Jun	Jul	Aug	Sep	Oct	Nov	Dec
# Patient	42	42	41	39	42	44	45	47	40	44	45	42
# Pneumonia	24	30	29	27	28	29	29	32	28	31	34	30
% Pneumonia	57%	71%	71%	69%	67%	66%	64%	68%	70%	70%	76%	71%



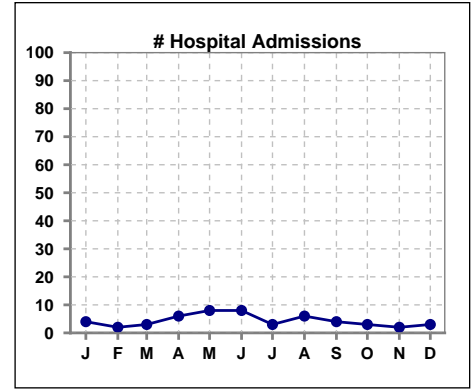
	Jan	Feb	Mar	Apr	May	Jun	Jul	Aug	Sep	Oct	Nov	Dec
# Patient	42	42	41						40	44	45	42
# Influenza	33	33	31						21	28	31	28
% Influenza	79%	79%	76%						53%	64%	69%	67%



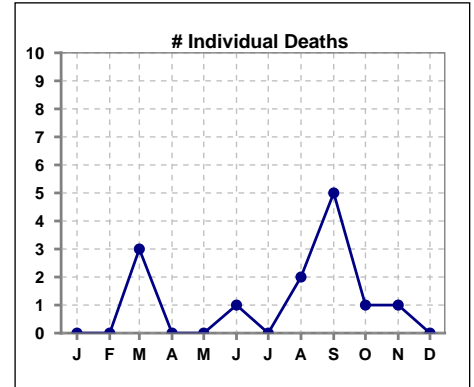
Methodology: a) All labs for 'Adequacy of Dialysis', 'Nutrition', 'Osteodystrophy', 'Anemia' and 'Diabetes' based on last value of month; b) BP's and #L processed are average of all values for month; c) Access data takes last access of month; d) Values for SGA and 'Infection Control' use most recent result.

VIII. Outcome measures

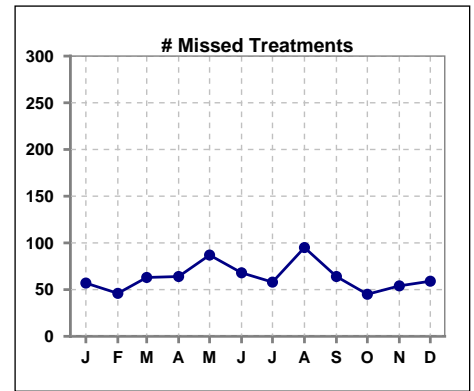
	Jan	Feb	Mar	Apr	May	Jun	Jul	Aug	Sep	Oct	Nov	Dec
# Patient	42	42	41	39	42	44	45	47	40	44	45	42
# Hospital Admissions	4	2	3	6	8	8	3	6	4	3	2	3



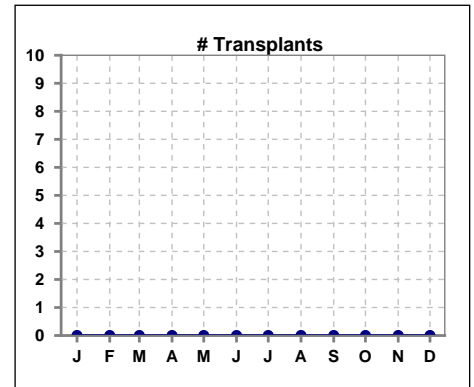
	Jan	Feb	Mar	Apr	May	Jun	Jul	Aug	Sep	Oct	Nov	Dec
# Patient	42	42	41	39	42	44	45	47	40	44	45	42
# Individual Deaths	0	0	3	0	0	1	0	2	5	1	1	0



	Jan	Feb	Mar	Apr	May	Jun	Jul	Aug	Sep	Oct	Nov	Dec
# Patient	42	42	41	39	42	44	45	47	40	44	45	42
# Missed Treatments	57	46	63	64	87	68	58	95	64	45	54	59



	Jan	Feb	Mar	Apr	May	Jun	Jul	Aug	Sep	Oct	Nov	Dec
# Patient	42	42	41	39	42	44	45	47	40	44	45	42
# Transplants	0	0	0	0	0	0	0	0	0	0	0	0



Methodology: a) All labs for 'Adequacy of Dialysis', 'Nutrition', 'Osteodystrophy', 'Anemia' and 'Diabetes' based on last value of month; b) BP's and #L processed are average of all values for month; c) Access data takes last access of month; d) Values for SGA and 'Infection Control' use most recent result.