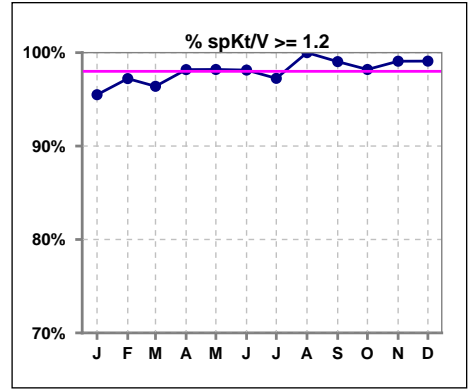
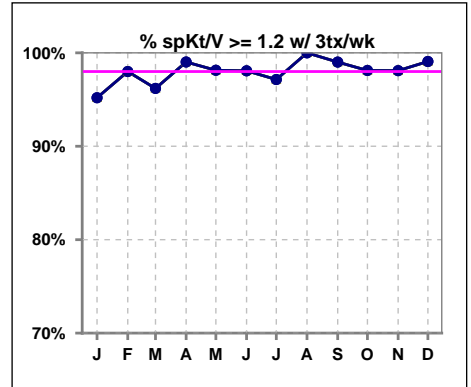


**I. ADEQUACY OF DIALYSIS**

	Jan	Feb	Mar	Apr	May	Jun	Jul	Aug	Sep	Oct	Nov	Dec
# spKt/V	111	108	111	110	111	107	109	108	104	111	109	110
# spKt/V >= 1.2	106	105	107	108	109	105	106	108	103	109	108	109
Pop. Mean	1.63	1.55	1.59	1.61	1.59	1.61	1.65	1.64	1.63	1.64	1.66	1.63
Std. Deviation	0.34	0.29	0.30	0.29	0.29	0.28	0.39	0.31	0.30	0.31	0.30	0.30
% spKt/V >= 1.2	95%	97%	96%	98%	98%	98%	97%	100%	99%	98%	99%	99%

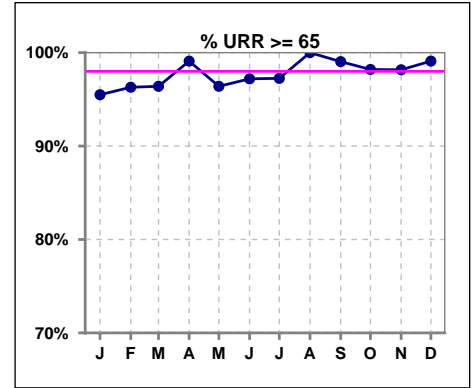


	Jan	Feb	Mar	Apr	May	Jun	Jul	Aug	Sep	Oct	Nov	Dec
# spKt/V w/ 3tx/wk	104	100	105	102	107	104	105	106	101	106	105	108
# spKt/V >= 1.2 w/3tx/wk	99	98	101	101	105	102	102	106	100	104	103	107
Pop. Mean	1.62	1.55	1.59	1.62	1.59	1.61	1.65	1.64	1.63	1.64	1.66	1.62
Std. Deviation	0.35	0.29	0.30	0.29	0.29	0.28	0.39	0.31	0.30	0.32	0.30	0.30
% >= 1.2 w/3tx/wk	95%	98%	96%	99%	98%	98%	97%	100%	99%	98%	98%	99%

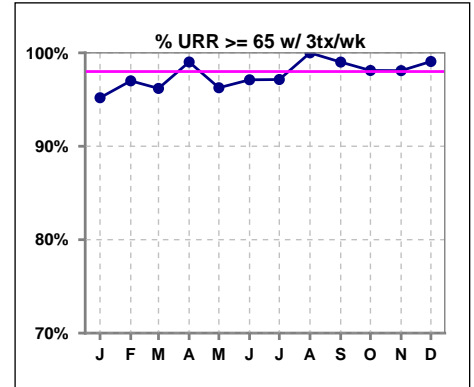


**I. ADEQUACY OF DIALYSIS - CONT.**

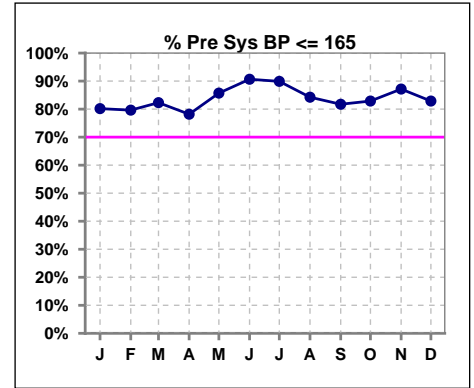
	Jan	Feb	Mar	Apr	May	Jun	Jul	Aug	Sep	Oct	Nov	Dec
# URR	111	108	111	110	111	107	109	108	104	111	109	110
# URR >= 65	106	104	107	109	107	104	106	108	103	109	107	109
Pop. Mean	75	73	74	75	74	75	75	75	75	75	76	75
Std. Deviation	7.87	6.32	5.80	5.88	5.85	5.44	7.08	5.73	5.65	6.25	5.61	5.44
% URR >= 65	95%	96%	96%	99%	96%	97%	97%	100%	99%	98%	98%	99%



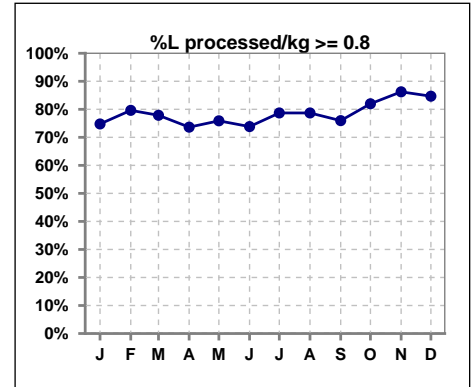
	Jan	Feb	Mar	Apr	May	Jun	Jul	Aug	Sep	Oct	Nov	Dec
# URR w/ 3tx/wk	104	100	105	102	107	104	105	106	101	106	105	108
# URR>=65 w/ 3tx/wk	99	97	101	101	103	101	102	106	100	104	103	107
Pop. Mean	75	73	74	75	74	75	75	75	75	75	76	75
Std. Deviation	8.01	6.34	5.92	5.83	5.87	5.48	7.11	5.78	5.68	6.38	5.65	5.48
% URR>=65 w/ 3tx/wk	95%	97%	96%	99%	96%	97%	97%	100%	99%	98%	98%	99%



	Jan	Feb	Mar	Apr	May	Jun	Jul	Aug	Sep	Oct	Nov	Dec
# Pre Sys BP	111	108	113	110	112	107	109	108	104	111	109	111
# Pre Sys BP <= 165	91	88	96	88	96	99	98	92	85	93	95	94
Pop. Mean	148	146	146	147	145	143	145	145	147	146	146	145
Std. Deviation	21.2	19.4	20.3	18.9	18.8	16.7	17.5	18.7	18.5	18.1	19.6	19.4
% Pre Sys BP <=165	80%	80%	82%	78%	86%	91%	90%	84%	82%	83%	87%	83%



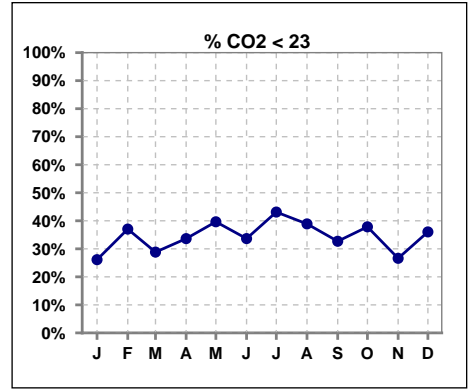
	Jan	Feb	Mar	Apr	May	Jun	Jul	Aug	Sep	Oct	Nov	Dec
# L processed/kg	111	108	113	110	112	107	108	108	104	111	109	111
# L processed/kg>=0.8	83	86	88	81	85	79	85	85	79	91	94	94
Pop. Mean	1	1	1	1	1	1	1	1	1	1	1	1
Std. Deviation	0.3	0.3	0.2	0.2	0.3	0.3	0.3	0.3	0.3	0.2	0.2	0.2
% L processed/kg>=0.8	75%	80%	78%	74%	76%	74%	79%	79%	76%	82%	86%	85%



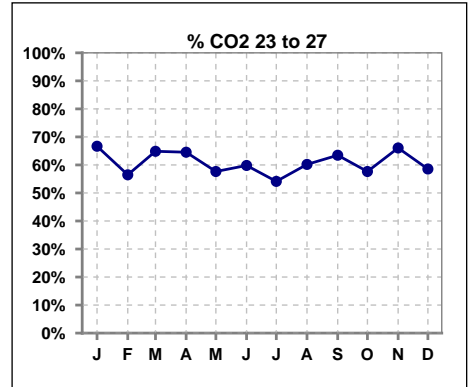
Methodology: a) All labs for 'Adequacy of Dialysis', 'Nutrition', 'Osteodystrophy', 'Anemia' and 'Diabetes' based on last value of month; b) BP's and #L processed are average of all values for month; c) Access data takes last access of month; d) Values for SGA and 'Infection Control' use most recent result.

**I. ADEQUACY OF DIALYSIS - CONT.**

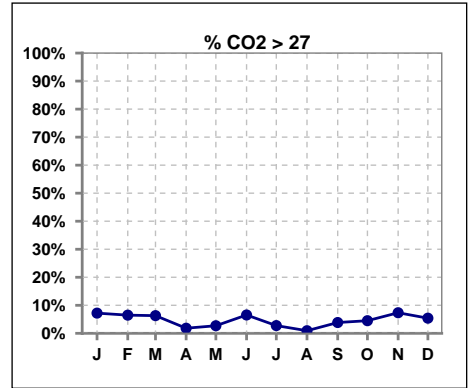
	Jan	Feb	Mar	Apr	May	Jun	Jul	Aug	Sep	Oct	Nov	Dec
# CO2	111	108	111	110	111	107	109	108	104	111	109	111
# CO2 < 23	29	40	32	37	44	36	47	42	34	42	29	40
Pop. Mean	24	23	24	23	23	23	23	23	23	23	24	23
Std. Deviation	2.65	2.55	2.57	2.33	2.63	2.63	2.52	2.53	2.85	2.38	2.41	2.56
<b>% CO2 &lt; 23</b>	<b>26%</b>	<b>37%</b>	<b>29%</b>	<b>34%</b>	<b>40%</b>	<b>34%</b>	<b>43%</b>	<b>39%</b>	<b>33%</b>	<b>38%</b>	<b>27%</b>	<b>36%</b>



	Jan	Feb	Mar	Apr	May	Jun	Jul	Aug	Sep	Oct	Nov	Dec
# CO2	111	108	111	110	111	107	109	108	104	111	109	111
# CO2 23 to 27	74	61	72	71	64	64	59	65	66	64	72	65
Pop. Mean	24	23	24	23	23	23	23	23	23	23	24	23
Std. Deviation	2.65	2.55	2.57	2.33	2.63	2.63	2.52	2.53	2.85	2.38	2.41	2.56
<b>% CO2 23 to 27</b>	<b>67%</b>	<b>56%</b>	<b>65%</b>	<b>65%</b>	<b>58%</b>	<b>60%</b>	<b>54%</b>	<b>60%</b>	<b>63%</b>	<b>58%</b>	<b>66%</b>	<b>59%</b>



	Jan	Feb	Mar	Apr	May	Jun	Jul	Aug	Sep	Oct	Nov	Dec
# CO2	111	108	111	110	111	107	109	108	104	111	109	111
# CO2 > 27	8	7	7	2	3	7	3	1	4	5	8	6
Pop. Mean	24	23	24	23	23	23	23	23	23	23	24	23
Std. Deviation	2.65	2.55	2.57	2.33	2.63	2.63	2.52	2.53	2.85	2.38	2.41	2.56
<b>% CO2 &gt; 27</b>	<b>7%</b>	<b>6%</b>	<b>6%</b>	<b>2%</b>	<b>3%</b>	<b>7%</b>	<b>3%</b>	<b>1%</b>	<b>4%</b>	<b>5%</b>	<b>7%</b>	<b>5%</b>

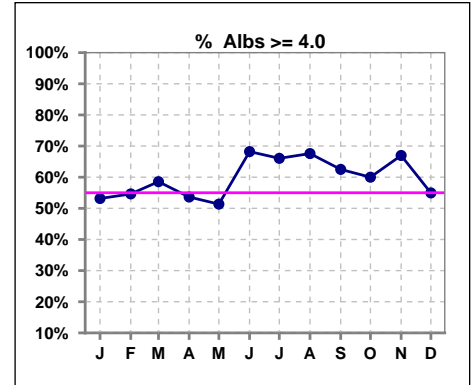


Methodology: a) All labs for 'Adequacy of Dialysis', 'Nutrition', 'Osteodystrophy', 'Anemia' and 'Diabetes' based on last value of month; b) BP's and #L processed are average of all values for month; c) Access data takes last access of month; d) Values for SGA and 'Infection Control' use most recent result.

\*Albumin values use BCG method - as of July 2001

**II. NUTRITION**

	Jan	Feb	Mar	Apr	May	Jun	Jul	Aug	Sep	Oct	Nov	Dec
# Albumin	111	108	111	110	111	107	109	108	104	110	109	111
# Albumin >= 4.0	59	59	65	59	57	73	72	73	65	66	73	61
Pop. Mean	4.0	4.0	4.0	4.0	4.0	4.1	4.0	4.0	4.0	4.0	4.1	4.0
Std. Deviation	0.34	0.32	0.33	0.30	0.36	0.38	0.34	0.34	0.40	0.41	0.38	0.35
% Alb >= 4.0	53%	55%	59%	54%	51%	68%	66%	68%	63%	60%	67%	55%

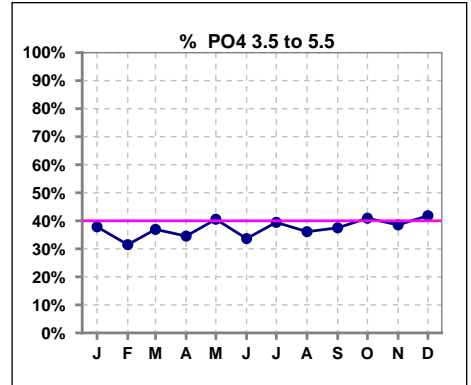


Methodology: a) All labs for 'Adequacy of Dialysis', 'Nutrition', 'Osteodystrophy', 'Anemia' and 'Diabetes' based on last value of month; b) BP's and #L processed are average of all values for month; c) Access data takes last access of month; d) Values for SGA and 'Infection Control' use most recent result.

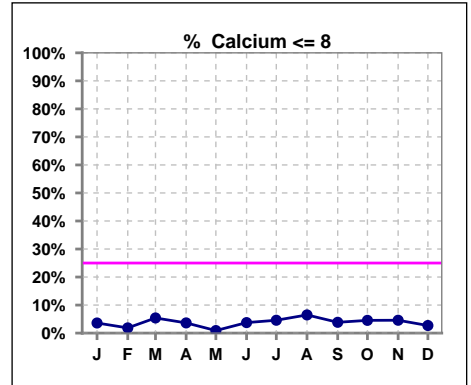
Lab methodology for PTH changed January 2012

**III. OSTEODYSTROPHY**

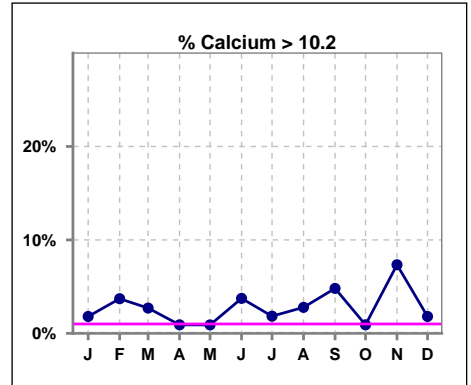
	Jan	Feb	Mar	Apr	May	Jun	Jul	Aug	Sep	Oct	Nov	Dec
# PO4	111	108	111	110	111	107	109	108	104	110	109	110
# PO4 3.5 to 5.5	42	34	41	38	45	36	43	39	39	45	42	46
Pop. Mean	6.2	6.2	6.0	6.0	6.4	6.4	6.3	6.2	6.1	6.0	6.0	6.2
Std. Deviation	2.11	1.96	2.03	1.86	2.10	1.93	2.20	2.13	1.98	1.98	1.82	2.10
% PO4 3.5 to 5.5	38%	31%	37%	35%	41%	34%	39%	36%	38%	41%	39%	42%



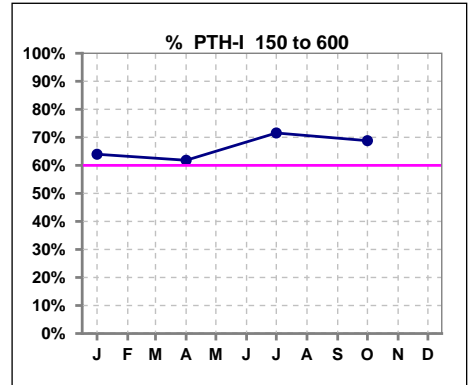
	Jan	Feb	Mar	Apr	May	Jun	Jul	Aug	Sep	Oct	Nov	Dec
# Calcium	111	108	111	110	111	107	109	108	104	110	109	111
# Calcium <= 8	4	2	6	4	1	4	5	7	4	5	5	3
Pop. Mean	9.1	9.2	9.2	9.1	9.1	9.2	9.1	9.2	9.2	9.2	9.4	9.2
Std. Deviation	0.58	0.61	0.72	0.58	0.58	0.64	0.64	0.65	0.68	0.60	0.69	0.61
% Calcium <= 8	4%	2%	5%	4%	1%	4%	5%	6%	4%	5%	5%	3%



	Jan	Feb	Mar	Apr	May	Jun	Jul	Aug	Sep	Oct	Nov	Dec
# Calcium	111	108	111	110	111	107	109	108	104	110	109	111
# Calcium > 10.2	2	4	3	1	1	4	2	3	5	1	8	2
Pop. Mean	9.1	9.2	9.2	9.1	9.1	9.2	9.1	9.2	9.2	9.2	9.4	9.2
Std. Deviation	0.58	0.61	0.72	0.58	0.58	0.64	0.64	0.65	0.68	0.60	0.69	0.61
% Calcium > 10.2	2%	4%	3%	1%	1%	4%	2%	3%	5%	1%	7%	2%



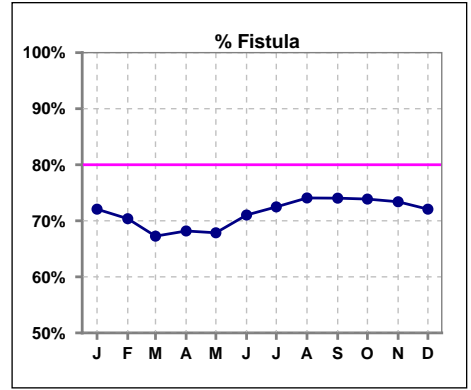
	Jan	Feb	Mar	Apr	May	Jun	Jul	Aug	Sep	Oct	Nov	Dec
# PTH-I	111			110			109			109		
# PTH-I 150 to 600	71			68			78			75		
Pop. Mean	487			459			460			436		
Std. Deviation	320			323			334			374		
% PTH-I 150 to 600	64%			62%			72%			69%		



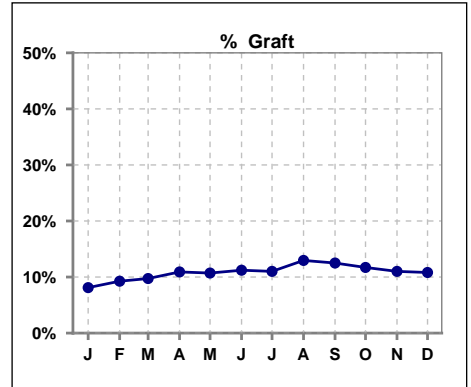
Methodology: a) All labs for 'Adequacy of Dialysis', 'Nutrition', 'Osteodystrophy', 'Anemia' and 'Diabetes' based on last value of month; b) BP's and #L processed are average of all values for month; c) Access data takes last access of month; d) Values for SGA and 'Infection Control' use most recent result.

**IV. ACCESS**

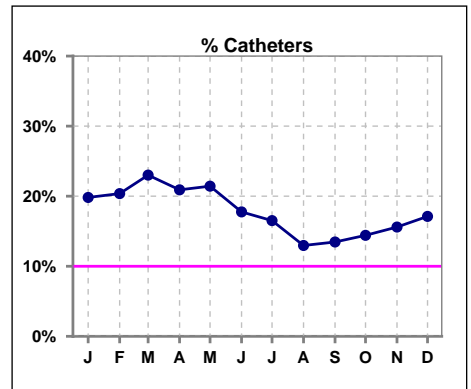
	Jan	Feb	Mar	Apr	May	Jun	Jul	Aug	Sep	Oct	Nov	Dec
<b># Access</b>	111	108	113	110	112	107	109	108	104	111	109	111
<b># Fistula</b>	80	76	76	75	76	76	79	80	77	82	80	80
<b>% Fistula</b>	72%	70%	67%	68%	68%	71%	72%	74%	74%	74%	73%	72%



	Jan	Feb	Mar	Apr	May	Jun	Jul	Aug	Sep	Oct	Nov	Dec
<b># Access</b>	111	108	113	110	112	107	109	108	104	111	109	111
<b># Graft</b>	9	10	11	12	12	12	12	14	13	13	12	12
<b>% Graft</b>	8%	9%	10%	11%	11%	11%	11%	13%	13%	12%	11%	11%



	Jan	Feb	Mar	Apr	May	Jun	Jul	Aug	Sep	Oct	Nov	Dec
<b># Access</b>	111	108	113	110	112	107	109	108	104	111	109	111
<b># Catheters</b>	22	22	26	23	24	19	18	14	14	16	17	19
<b>% Catheters</b>	20%	20%	23%	21%	21%	18%	17%	13%	13%	14%	16%	17%



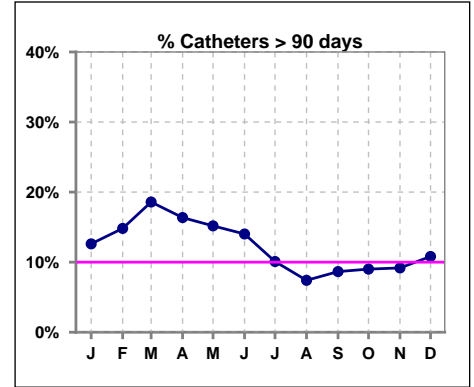
Methodology: a) All labs for 'Adequacy of Dialysis', 'Nutrition', 'Osteodystrophy', 'Anemia' and 'Diabetes' based on last value of month; b) BP's and #L processed are average of all values for month; c) Access data takes last access of month; d) Values for SGA and 'Infection Control' use most recent result.

**IV. ACCESS - CONT.**

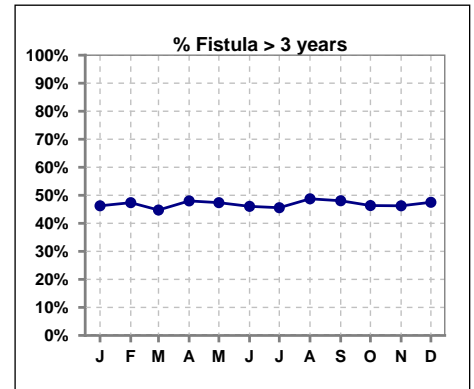
**Catheters > 90 days**

	Jan	Feb	Mar	Apr	May	Jun	Jul	Aug	Sep	Oct	Nov	Dec
<b># Access</b>	111	108	113	110	112	107	109	108	104	111	109	111
<b># Catheters</b>	14	16	21	18	17	15	11	8	9	10	10	12
<b>% Catheters</b>	13%	15%	19%	16%	15%	14%	10%	7%	9%	9%	9%	11%

**Definition: Catheter in use on last treatment of the month**



	Jan	Feb	Mar	Apr	May	Jun	Jul	Aug	Sep	Oct	Nov	Dec
<b># Fistula</b>	80	76	76	75	76	76	79	80	77	82	80	80
<b># Fistula &gt; 3 yrs</b>	37	36	34	36	36	35	36	39	37	38	37	38
<b>% Fistula &gt; 3 yrs</b>	46%	47%	45%	48%	47%	46%	46%	49%	48%	46%	46%	48%

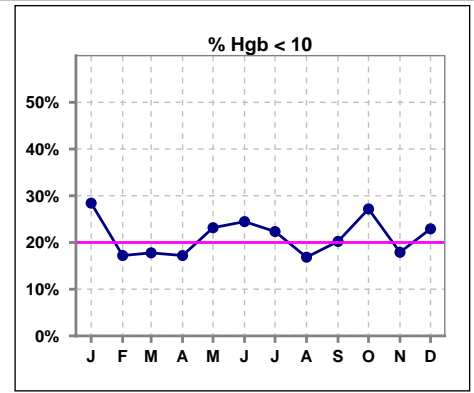


**Methodology:** a) All labs for 'Adequacy of Dialysis', 'Nutrition', 'Osteodystrophy', 'Anemia' and 'Diabetes' based on last value of month; b) BP's and #L processed are average of all values for month; c) Access data takes last access of month; d) Values for SGA and 'Infection Control' use most recent result.

**V. ANEMIA**

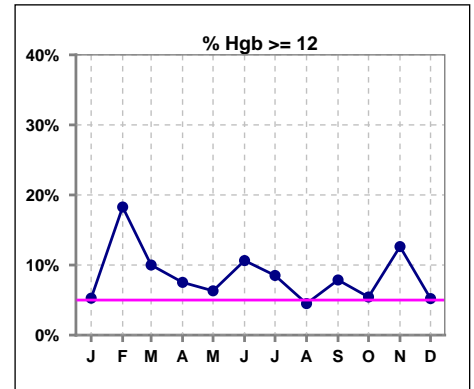
	Jan	Feb	Mar	Apr	May	Jun	Jul	Aug	Sep	Oct	Nov	Dec
# Hgb	95	93	90	93	95	94	94	89	89	92	95	96
# Hgb < 10	27	16	16	16	22	23	21	15	18	25	17	22
Pop. Mean	10.5	11.0	10.9	10.8	10.7	10.7	10.6	10.7	10.7	10.6	11.0	10.8
Std. Deviation	1.2	1.3	1.3	1.1	1.1	1.2	1.2	1.1	1.3	1.2	1.2	1.0
% Hgb < 10	28%	17%	18%	17%	23%	24%	22%	17%	20%	27%	18%	23%

Note: Excludes patients who received no ESA in month.



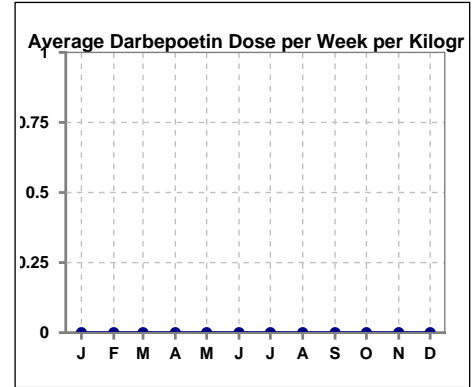
	Jan	Feb	Mar	Apr	May	Jun	Jul	Aug	Sep	Oct	Nov	Dec
# Hgb	95	93	90	93	95	94	94	89	89	92	95	96
# Hgb >= 12	5	17	9	7	6	10	8	4	7	5	12	5
Pop. Mean	10.5	11.0	10.9	10.8	10.7	10.7	10.6	10.7	10.7	10.6	11.0	10.8
Std. Deviation	1.2	1.3	1.3	1.1	1.1	1.2	1.2	1.1	1.3	1.2	1.2	1.0
% Hgb >= 12	5%	18%	10%	8%	6%	11%	9%	4%	8%	5%	13%	5%

Note: Excludes patients who received no ESA in month.



**Average Darbepoetin Dose per Week per Kilogram**

	Jan	Feb	Mar	Apr	May	Jun	Jul	Aug	Sep	Oct	Nov	Dec
# Average Darbepoetin	0	0	0	0	0	0	0	0	0	0	0	0

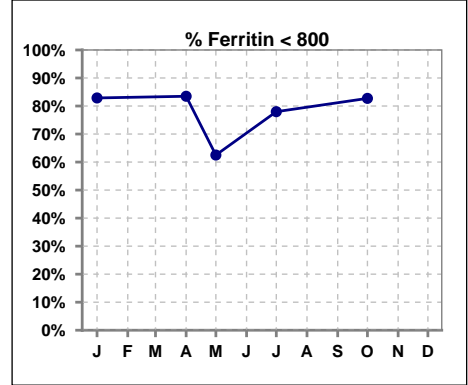




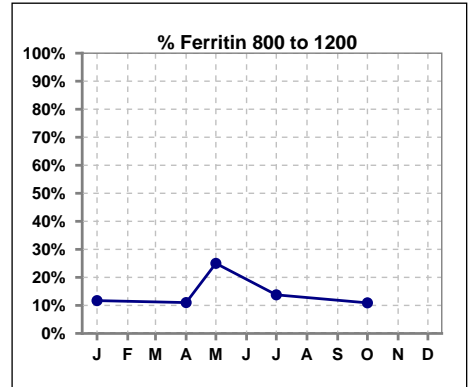
**V. ANEMIA - CONT.**

**Iron Profile**

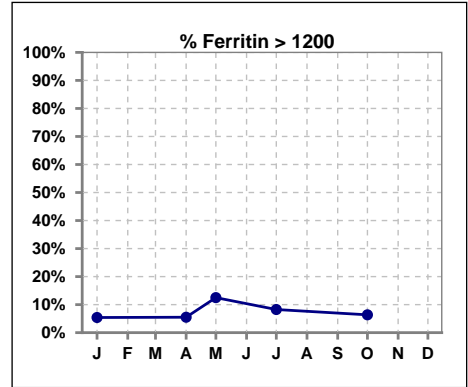
	Jan	Feb	Mar	Apr	May	Jun	Jul	Aug	Sep	Oct	Nov	Dec
# Ferritin	111			109	8		109			110		
# Ferritin < 800	92			91	5		85			91		
Pop. Mean	458			466	668		551			531		
Std. Deviation	376			337	402		402			451		
<b>% Ferritin &lt; 800</b>	<b>83%</b>			<b>83%</b>	<b>63%</b>		<b>78%</b>			<b>83%</b>		



	Jan	Feb	Mar	Apr	May	Jun	Jul	Aug	Sep	Oct	Nov	Dec
# Ferritin	111			109	8		109			110		
# Ferritin 800 to 1200	13			12	2		15			12		
Pop. Mean	458			466	668		551			531		
Std. Deviation	376			337	402		402			451		
<b>% Ferritin 800 to 1200</b>	<b>12%</b>			<b>11%</b>	<b>25%</b>		<b>14%</b>			<b>11%</b>		



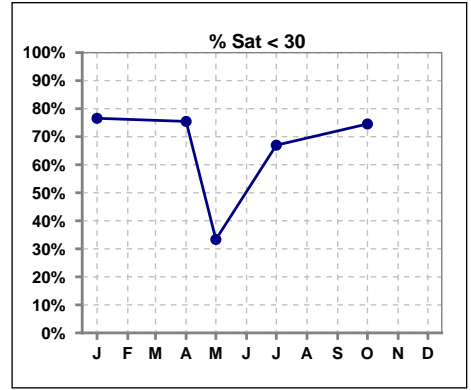
	Jan	Feb	Mar	Apr	May	Jun	Jul	Aug	Sep	Oct	Nov	Dec
# Ferritin	111			109	8		109			110		
# Ferritin > 1200	6			6	1		9			7		
Pop. Mean	458			466	668		551			531		
Std. Deviation	376			337	402		402			451		
<b>% Ferritin &gt; 1200</b>	<b>5%</b>			<b>6%</b>	<b>13%</b>		<b>8%</b>			<b>6%</b>		



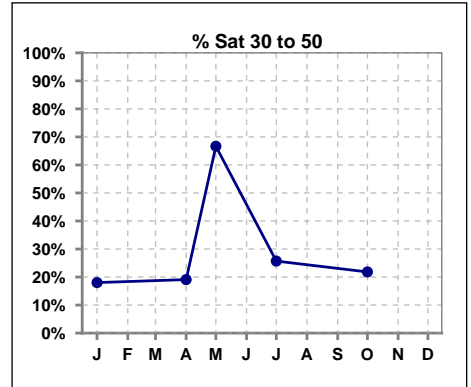
Methodology: a) All labs for 'Adequacy of Dialysis', 'Nutrition', 'Osteodystrophy', 'Anemia' and 'Diabetes' based on last value of month; b) BP's and #L processed are average of all values for month; c) Access data takes last access of month; d) Values for SGA and 'Infection Control' use most recent result.

**V. ANEMIA - CONT.**

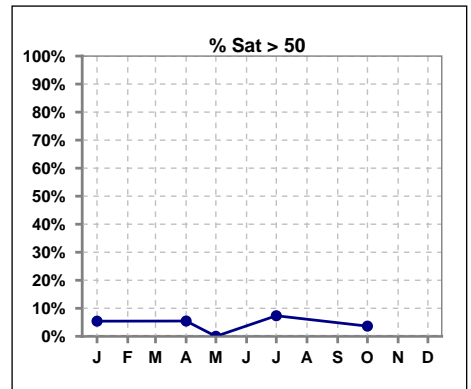
	Jan	Feb	Mar	Apr	May	Jun	Jul	Aug	Sep	Oct	Nov	Dec
# % Sat	111			110	6		109			110		
# % Sat < 30	85			83	2		73			82		
Pop. Mean	25			26	30		29			25		
Std. Deviation	14			15	10		19			14		
<b>% % Sat &lt; 30</b>	<b>77%</b>			<b>75%</b>	<b>33%</b>		<b>67%</b>			<b>75%</b>		



	Jan	Feb	Mar	Apr	May	Jun	Jul	Aug	Sep	Oct	Nov	Dec
# % Sat	111			110	6		109			110		
# % Sat 30 to 50	20			21	4		28			24		
Pop. Mean	25			26	30		29			25		
Std. Deviation	14			15	10		19			14		
<b>% % Sat 30 to 50</b>	<b>18%</b>			<b>19%</b>	<b>67%</b>		<b>26%</b>			<b>22%</b>		



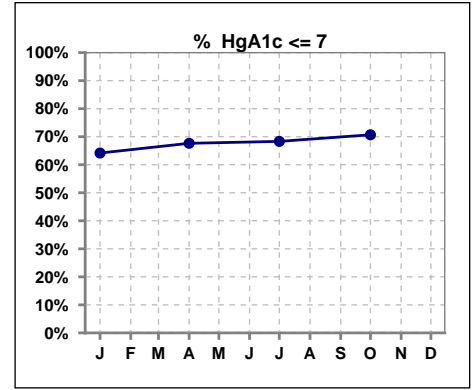
	Jan	Feb	Mar	Apr	May	Jun	Jul	Aug	Sep	Oct	Nov	Dec
# % Sat	111			110	6		109			110		
# % Sat > 50	6			6	0		8			4		
Pop. Mean	25			26	30		29			25		
Std. Deviation	14			15	10		19			14		
<b>% % Sat &gt; 50</b>	<b>5%</b>			<b>5%</b>	<b>0%</b>		<b>7%</b>			<b>4%</b>		



Methodology: a) All labs for 'Adequacy of Dialysis', 'Nutrition', 'Osteodystrophy', 'Anemia' and 'Diabetes' based on last value of month; b) BP's and #L processed are average of all values for month; c) Access data takes last access of month; d) Values for SGA and 'Infection Control' use most recent result.

**VI. Diabetes**

	Jan	Feb	Mar	Apr	May	Jun	Jul	Aug	Sep	Oct	Nov	Dec
# HgA1c	67			68			60			58		
# HgA1c <= 7	43			46			41			41		
Pop. Mean	6.6			6.6			6.6			6.4		
Std. Deviation	1.48			1.67			1.47			1.48		
<b>% HgA1c &lt;= 7</b>	<b>64%</b>			<b>68%</b>			<b>68%</b>			<b>71%</b>		

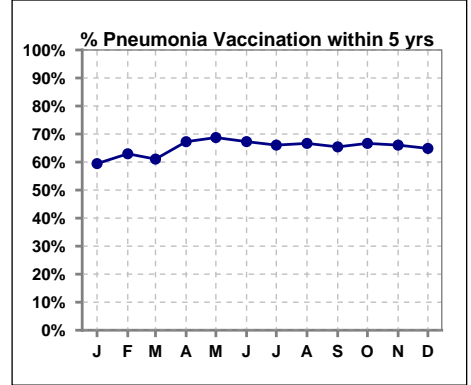


Methodology: a) All labs for 'Adequacy of Dialysis', 'Nutrition', 'Osteodystrophy', 'Anemia' and 'Diabetes' based on last value of month; b) BP's and #L processed are average of all values for month; c) Access data takes last access of month; d) Values for SGA and 'Infection Control' use most recent result.

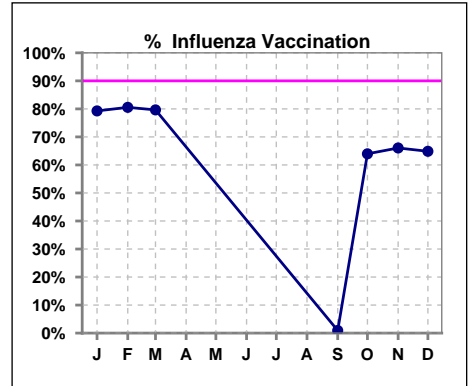
**VII. Infection Control**

**Pneumonia vaccination within the past five years**

	Jan	Feb	Mar	Apr	May	Jun	Jul	Aug	Sep	Oct	Nov	Dec
<b># Patient</b>	111	108	113	110	112	107	109	108	107	111	109	111
<b># Pneumonia</b>	66	68	69	74	77	72	72	72	70	74	72	72
<b>% Pneumonia</b>	59%	63%	61%	67%	69%	67%	66%	67%	65%	67%	66%	65%



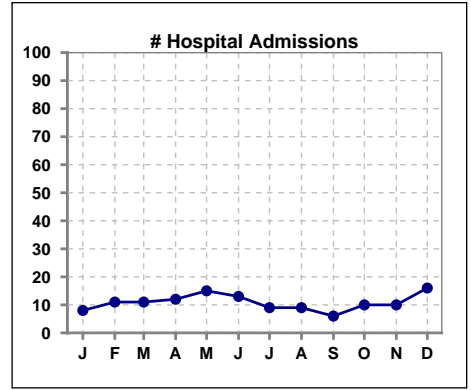
	Jan	Feb	Mar	Apr	May	Jun	Jul	Aug	Sep	Oct	Nov	Dec
<b># Patient</b>	111	108	113						107	111	109	111
<b># Influenza</b>	88	87	90						1	71	72	72
<b>% Influenza</b>	79%	81%	80%						1%	64%	66%	65%



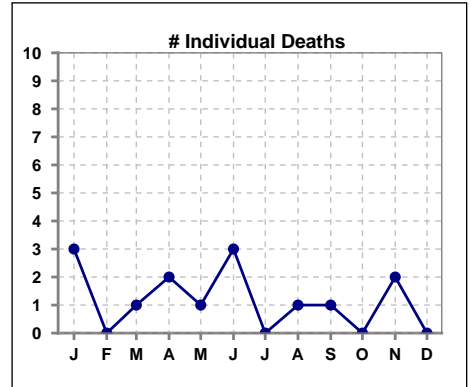
Methodology: a) All labs for 'Adequacy of Dialysis', 'Nutrition', 'Osteodystrophy', 'Anemia' and 'Diabetes' based on last value of month; b) BP's and #L processed are average of all values for month; c) Access data takes last access of month; d) Values for SGA and 'Infection Control' use most recent result.

**VIII. Outcome measures**

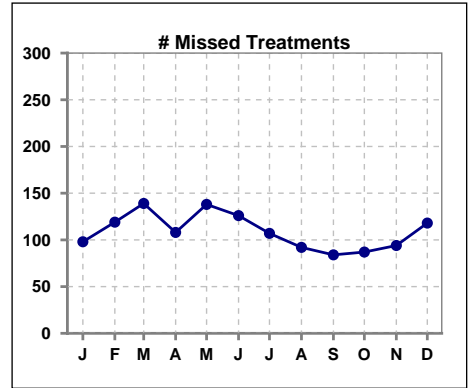
	Jan	Feb	Mar	Apr	May	Jun	Jul	Aug	Sep	Oct	Nov	Dec
<b># Patient</b>	111	108	113	110	112	107	109	108	107	111	109	111
<b># Hospital Admissions</b>	8	11	11	12	15	13	9	9	6	10	10	16



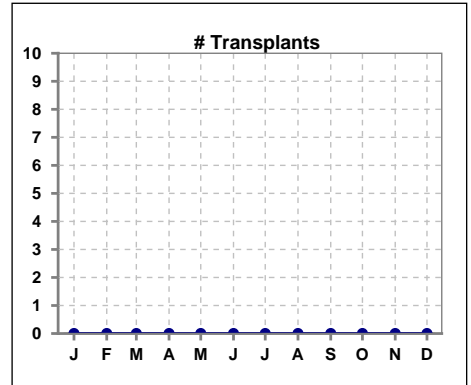
	Jan	Feb	Mar	Apr	May	Jun	Jul	Aug	Sep	Oct	Nov	Dec
<b># Patient</b>	111	108	113	110	112	107	109	108	107	111	109	111
<b># Individual Deaths</b>	3	0	1	2	1	3	0	1	1	0	2	0



	Jan	Feb	Mar	Apr	May	Jun	Jul	Aug	Sep	Oct	Nov	Dec
<b># Patient</b>	111	108	113	110	112	107	109	108	107	111	109	111
<b># Missed Treatments</b>	98	119	139	108	138	126	107	92	84	87	94	118



	Jan	Feb	Mar	Apr	May	Jun	Jul	Aug	Sep	Oct	Nov	Dec
<b># Patient</b>	111	108	113	110	112	107	109	108	107	111	109	111
<b># Transplants</b>	0	0	0	0	0	0	0	0	0	0	0	0



Methodology: a) All labs for 'Adequacy of Dialysis', 'Nutrition', 'Osteodystrophy', 'Anemia' and 'Diabetes' based on last value of month; b) BP's and #L processed are average of all values for month; c) Access data takes last access of month; d) Values for SGA and 'Infection Control' use most recent result.