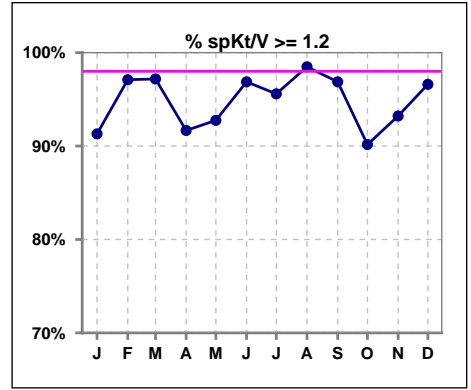
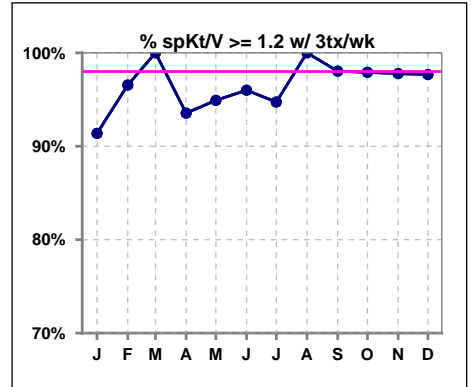


**I. ADEQUACY OF DIALYSIS**

	Jan	Feb	Mar	Apr	May	Jun	Jul	Aug	Sep	Oct	Nov	Dec
# spKt/V	69	69	71	72	69	64	68	66	64	61	59	59
# spKt/V >= 1.2	63	67	69	66	64	62	65	65	62	55	55	57
Pop. Mean	1.66	1.64	1.64	1.59	1.62	1.66	1.60	1.60	1.61	1.54	1.60	1.61
Std. Deviation	0.37	0.31	0.39	0.39	0.32	0.32	0.34	0.31	0.28	0.31	0.33	0.33
% spKt/V >= 1.2	91%	97%	97%	92%	93%	97%	96%	98%	97%	90%	93%	97%



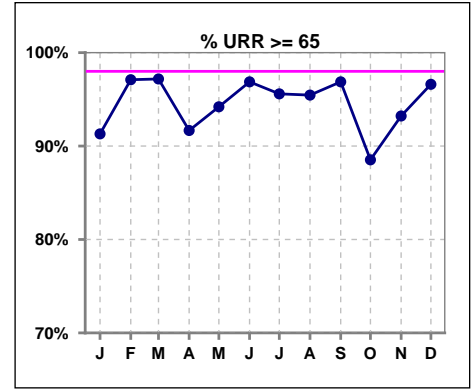
	Jan	Feb	Mar	Apr	May	Jun	Jul	Aug	Sep	Oct	Nov	Dec
# spKt/V w/ 3tx/wk	58	58	58	62	59	50	57	55	51	48	45	43
# spKt/V >= 1.2 w/3tx/wk	53	56	58	58	56	48	54	55	50	47	44	42
Pop. Mean	1.68	1.66	1.67	1.63	1.61	1.67	1.59	1.61	1.64	1.58	1.62	1.64
Std. Deviation	0.39	0.32	0.40	0.37	0.30	0.36	0.36	0.27	0.28	0.29	0.26	0.36
% >= 1.2 w/3tx/wk	91%	97%	100%	94%	95%	96%	95%	100%	98%	98%	98%	98%



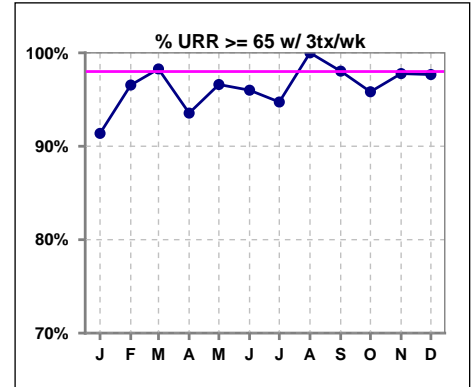
Methodology: a) All labs for 'Adequacy of Dialysis', 'Nutrition', 'Osteodystrophy', 'Anemia' and 'Diabetes' based on last value of month; b) BP's and #L processed are average of all values for month; c) Access data takes last access of month; d) Values for SGA and 'Infection Control' use most recent result.

**I. ADEQUACY OF DIALYSIS - CONT.**

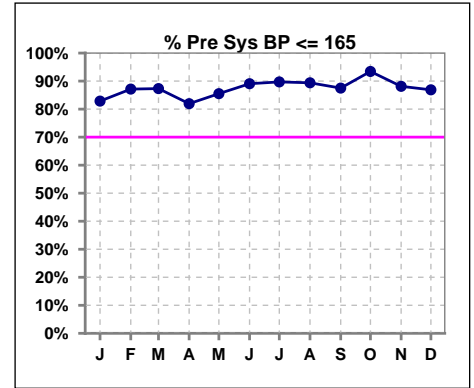
	Jan	Feb	Mar	Apr	May	Jun	Jul	Aug	Sep	Oct	Nov	Dec
# URR	69	69	71	72	69	64	68	66	64	61	59	59
# URR >= 65	63	67	69	66	65	62	65	63	62	54	55	57
Pop. Mean	75	75	75	73	74	75	74	74	75	73	74	74
Std. Deviation	7.44	5.95	6.57	8.96	6.56	6.02	6.90	6.10	5.68	7.01	9.19	6.24
<b>% URR &gt;= 65</b>	<b>91%</b>	<b>97%</b>	<b>97%</b>	<b>92%</b>	<b>94%</b>	<b>97%</b>	<b>96%</b>	<b>95%</b>	<b>97%</b>	<b>89%</b>	<b>93%</b>	<b>97%</b>



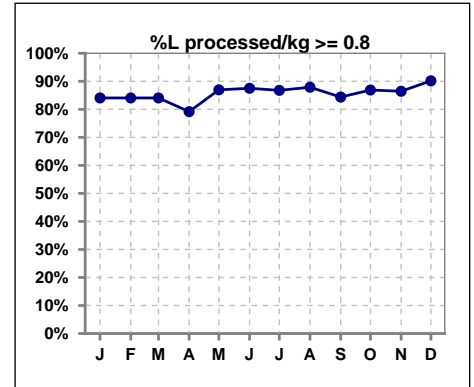
	Jan	Feb	Mar	Apr	May	Jun	Jul	Aug	Sep	Oct	Nov	Dec
# URR w/ 3tx/wk	58	58	58	62	59	50	57	55	51	48	45	43
# URR>=65 w/ 3tx/wk	53	56	57	58	57	48	54	55	50	46	44	42
Pop. Mean	75	75	75	75	75	75	74	75	75	74	75	75
Std. Deviation	7.62	6.20	6.33	7.35	6.22	6.61	7.28	5.16	5.51	6.02	5.10	6.45
<b>% URR&gt;=65 w/ 3tx/wk</b>	<b>91%</b>	<b>97%</b>	<b>98%</b>	<b>94%</b>	<b>97%</b>	<b>96%</b>	<b>95%</b>	<b>100%</b>	<b>98%</b>	<b>96%</b>	<b>98%</b>	<b>98%</b>



	Jan	Feb	Mar	Apr	May	Jun	Jul	Aug	Sep	Oct	Nov	Dec
# Pre Sys BP	70	70	71	72	69	64	68	66	64	61	59	61
# Pre Sys BP <= 165	59	62	62	60	61	57	62	61	57	57	54	53
Pop. Mean	144	144	144	146	144	144	143	144	145	143	142	142
Std. Deviation	19.1	19.7	18.9	18.4	17.5	18.0	16.8	16.4	17.4	15.9	18.2	19.6
<b>% Pre Sys BP &lt;= 165</b>	<b>83%</b>	<b>87%</b>	<b>87%</b>	<b>82%</b>	<b>86%</b>	<b>89%</b>	<b>90%</b>	<b>89%</b>	<b>88%</b>	<b>93%</b>	<b>88%</b>	<b>87%</b>



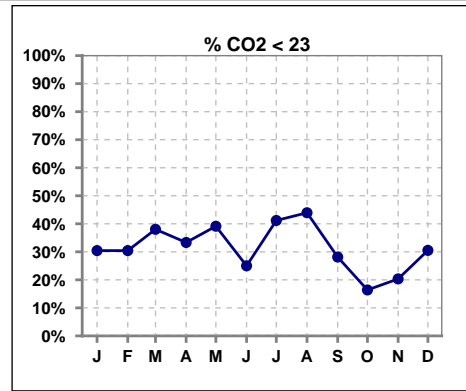
	Jan	Feb	Mar	Apr	May	Jun	Jul	Aug	Sep	Oct	Nov	Dec
# L processed/kg	69	69	69	72	69	64	68	66	64	61	59	61
# L processed/kg>=0.8	58	58	58	57	60	56	59	58	54	53	51	55
Pop. Mean	1	1	1	1	1	1	1	1	1	1	1	1
Std. Deviation	0.3	0.3	0.3	0.3	0.3	0.3	0.3	0.3	0.3	0.3	0.3	0.3
<b>% L processed/kg&gt;=0.8</b>	<b>84%</b>	<b>84%</b>	<b>84%</b>	<b>79%</b>	<b>87%</b>	<b>88%</b>	<b>87%</b>	<b>88%</b>	<b>84%</b>	<b>87%</b>	<b>86%</b>	<b>90%</b>



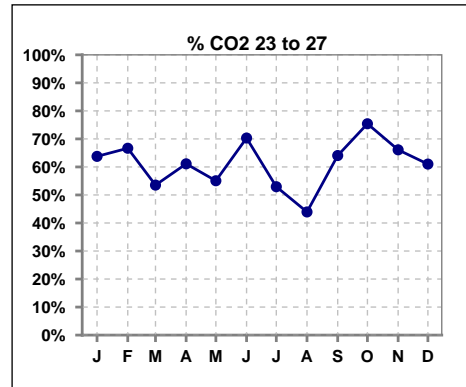
Methodology: a) All labs for 'Adequacy of Dialysis', 'Nutrition', 'Osteodystrophy', 'Anemia' and 'Diabetes' based on last value of month; b) BP's and #L processed are average of all values for month; c) Access data takes last access of month; d) Values for SGA and 'Infection Control' use most recent result.

**I. ADEQUACY OF DIALYSIS - CONT.**

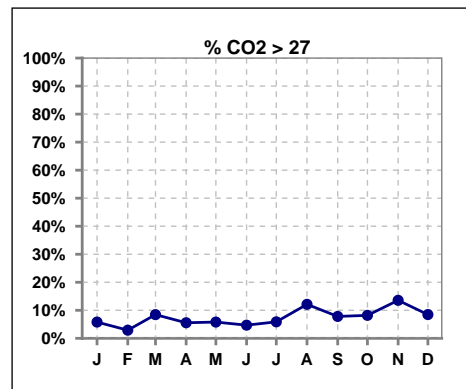
	Jan	Feb	Mar	Apr	May	Jun	Jul	Aug	Sep	Oct	Nov	Dec
# CO2	69	69	71	72	69	64	68	66	64	61	59	59
# CO2 < 23	21	21	27	24	27	16	28	29	18	10	12	18
Pop. Mean	24	23	24	23	23	24	23	23	24	24	24	24
Std. Deviation	2.68	2.45	2.71	2.69	2.92	2.21	2.82	3.12	2.97	2.56	2.80	3.34
<b>% CO2 &lt; 23</b>	<b>30%</b>	<b>30%</b>	<b>38%</b>	<b>33%</b>	<b>39%</b>	<b>25%</b>	<b>41%</b>	<b>44%</b>	<b>28%</b>	<b>16%</b>	<b>20%</b>	<b>31%</b>



	Jan	Feb	Mar	Apr	May	Jun	Jul	Aug	Sep	Oct	Nov	Dec
# CO2	69	69	71	72	69	64	68	66	64	61	59	59
# CO2 23 to 27	44	46	38	44	38	45	36	29	41	46	39	36
Pop. Mean	24	23	24	23	23	24	23	23	24	24	24	24
Std. Deviation	2.68	2.45	2.71	2.69	2.92	2.21	2.82	3.12	2.97	2.56	2.80	3.34
<b>% CO2 23 to 27</b>	<b>64%</b>	<b>67%</b>	<b>54%</b>	<b>61%</b>	<b>55%</b>	<b>70%</b>	<b>53%</b>	<b>44%</b>	<b>64%</b>	<b>75%</b>	<b>66%</b>	<b>61%</b>



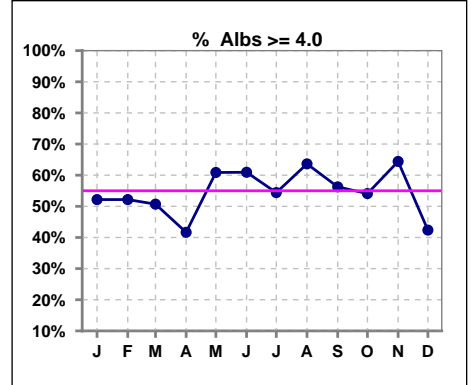
	Jan	Feb	Mar	Apr	May	Jun	Jul	Aug	Sep	Oct	Nov	Dec
# CO2	69	69	71	72	69	64	68	66	64	61	59	59
# CO2 > 27	4	2	6	4	4	3	4	8	5	5	8	5
Pop. Mean	24	23	24	23	23	24	23	23	24	24	24	24
Std. Deviation	2.68	2.45	2.71	2.69	2.92	2.21	2.82	3.12	2.97	2.56	2.80	3.34
<b>% CO2 &gt; 27</b>	<b>6%</b>	<b>3%</b>	<b>8%</b>	<b>6%</b>	<b>6%</b>	<b>5%</b>	<b>6%</b>	<b>12%</b>	<b>8%</b>	<b>8%</b>	<b>14%</b>	<b>8%</b>



\*Albumin values use BCG method - as of July 2001

**II. NUTRITION**

	Jan	Feb	Mar	Apr	May	Jun	Jul	Aug	Sep	Oct	Nov	Dec
# Albumin	69	69	71	72	69	64	68	66	64	61	59	59
# Albumin >= 4.0	36	36	36	30	42	39	37	42	36	33	38	25
Pop. Mean	3.9	3.9	3.9	3.9	3.9	4.0	4.0	4.0	4.0	4.0	4.0	3.8
Std. Deviation	0.51	0.45	0.44	0.34	0.34	0.31	0.40	0.37	0.42	0.39	0.43	0.38
% Alb >= 4.0	52%	52%	51%	42%	61%	61%	54%	64%	56%	54%	64%	42%

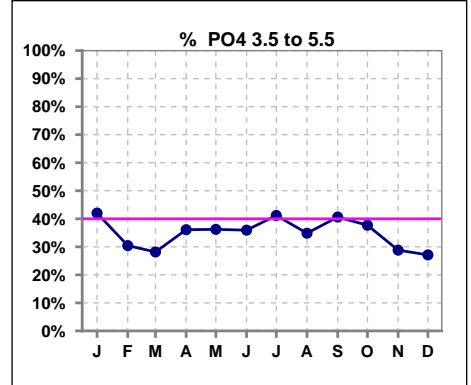


Methodology: a) All labs for 'Adequacy of Dialysis', 'Nutrition', 'Osteodystrophy', 'Anemia' and 'Diabetes' based on last value of month; b) BP's and #L processed are average of all values for month; c) Access data takes last access of month; d) Values for SGA and 'Infection Control' use most recent result.

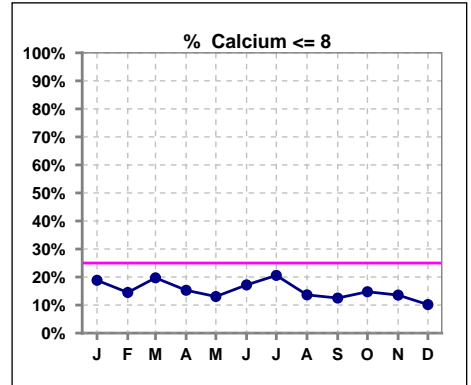
Lab methodology for PTH changed January 2012

**III. OSTEODYSTROPHY**

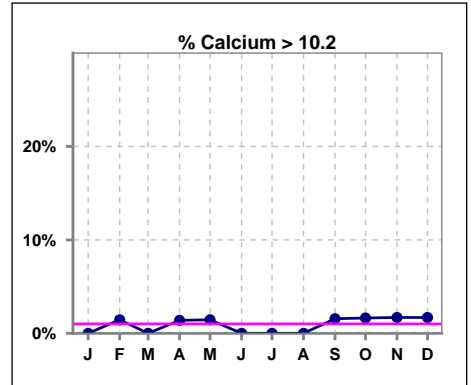
	Jan	Feb	Mar	Apr	May	Jun	Jul	Aug	Sep	Oct	Nov	Dec
# PO4	69	69	71	72	69	64	68	66	64	61	59	59
# PO4 3.5 to 5.5	29	21	20	26	25	23	28	23	26	23	17	16
Pop. Mean	6.0	6.5	6.4	6.4	6.0	6.1	6.2	6.4	6.0	6.0	6.4	6.2
Std. Deviation	1.65	1.83	1.81	1.75	1.67	1.41	1.77	1.63	1.71	1.99	1.91	2.33
% PO4 3.5 to 5.5	42%	30%	28%	36%	36%	36%	41%	35%	41%	38%	29%	27%



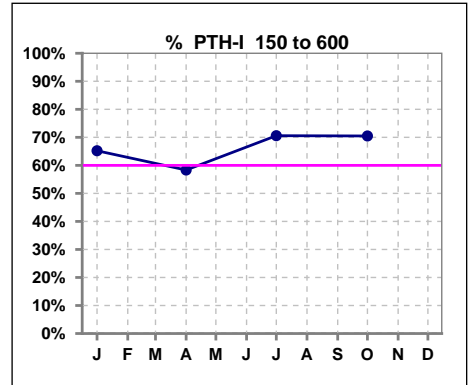
	Jan	Feb	Mar	Apr	May	Jun	Jul	Aug	Sep	Oct	Nov	Dec
# Calcium	69	69	71	72	69	64	68	66	64	61	59	59
# Calcium <= 8	13	10	14	11	9	11	14	9	8	9	8	6
Pop. Mean	8.8	8.8	8.8	8.9	8.9	8.9	8.8	8.8	8.9	9.1	9.0	8.9
Std. Deviation	0.93	0.86	0.83	0.84	0.76	0.86	0.79	0.69	0.74	0.78	0.81	0.77
% Calcium <= 8	19%	14%	20%	15%	13%	17%	21%	14%	13%	15%	14%	10%



	Jan	Feb	Mar	Apr	May	Jun	Jul	Aug	Sep	Oct	Nov	Dec
# Calcium	69	69	71	72	69	64	68	66	64	61	59	59
# Calcium > 10.2	0	1	0	1	1	0	0	0	1	1	1	1
Pop. Mean	8.8	8.8	8.8	8.9	8.9	8.9	8.8	8.8	8.9	9.1	9.0	8.9
Std. Deviation	0.93	0.86	0.83	0.84	0.76	0.86	0.79	0.69	0.74	0.78	0.81	0.77
% Calcium > 10.2	0%	1%	0%	1%	1%	0%	0%	0%	2%	2%	2%	2%



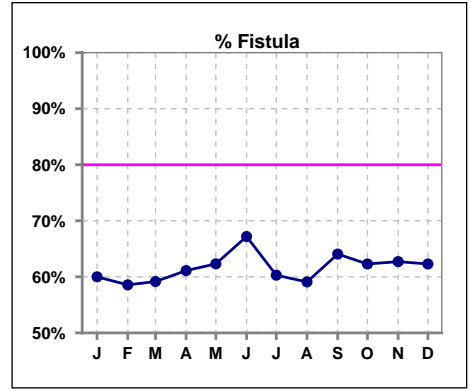
	Jan	Feb	Mar	Apr	May	Jun	Jul	Aug	Sep	Oct	Nov	Dec
# PTH-I	69			72			68			61		
# PTH-I 150 to 600	45			42			48			43		
Pop. Mean	473			548			432			412		
Std. Deviation	285			425			269			258		
% PTH-I 150 to 600	65%			58%			71%			70%		



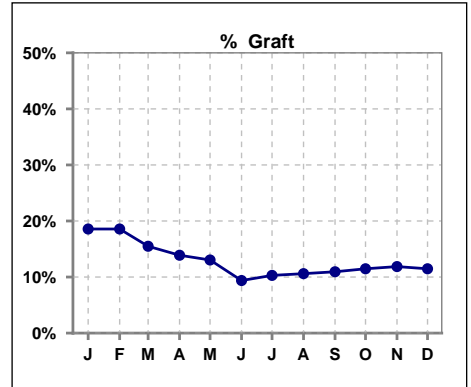
Methodology: a) All labs for 'Adequacy of Dialysis', 'Nutrition', 'Osteodystrophy', 'Anemia' and 'Diabetes' based on last value of month; b) BP's and #L processed are average of all values for month; c) Access data takes last access of month; d) Values for SGA and 'Infection Control' use most recent result.

**IV. ACCESS**

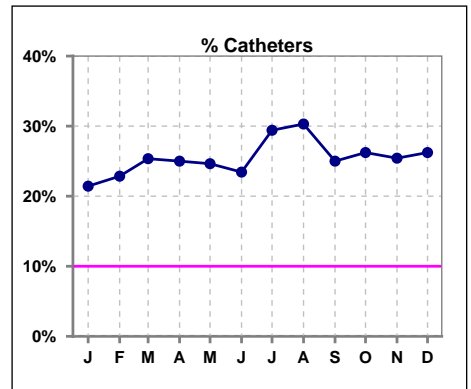
	Jan	Feb	Mar	Apr	May	Jun	Jul	Aug	Sep	Oct	Nov	Dec
# Access	70	70	71	72	69	64	68	66	64	61	59	61
# Fistula	42	41	42	44	43	43	41	39	41	38	37	38
% Fistula	60%	59%	59%	61%	62%	67%	60%	59%	64%	62%	63%	62%



	Jan	Feb	Mar	Apr	May	Jun	Jul	Aug	Sep	Oct	Nov	Dec
# Access	70	70	71	72	69	64	68	66	64	61	59	61
# Graft	13	13	11	10	9	6	7	7	7	7	7	7
% Graft	19%	19%	15%	14%	13%	9%	10%	11%	11%	11%	12%	11%



	Jan	Feb	Mar	Apr	May	Jun	Jul	Aug	Sep	Oct	Nov	Dec
# Access	70	70	71	72	69	64	68	66	64	61	59	61
# Catheters	15	16	18	18	17	15	20	20	16	16	15	16
% Catheters	21%	23%	25%	25%	25%	23%	29%	30%	25%	26%	25%	26%



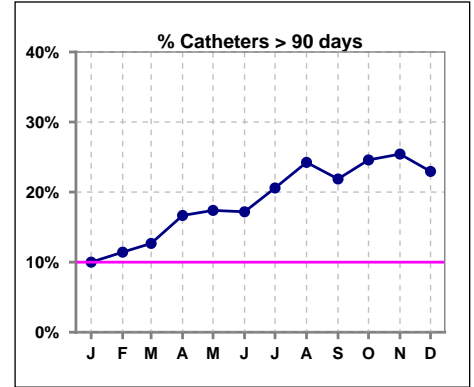
Methodology: a) All labs for 'Adequacy of Dialysis', 'Nutrition', 'Osteodystrophy', 'Anemia' and 'Diabetes' based on last value of month; b) BP's and #L processed are average of all values for month; c) Access data takes last access of month; d) Values for SGA and 'Infection Control' use most recent result.

**IV. ACCESS - CONT.**

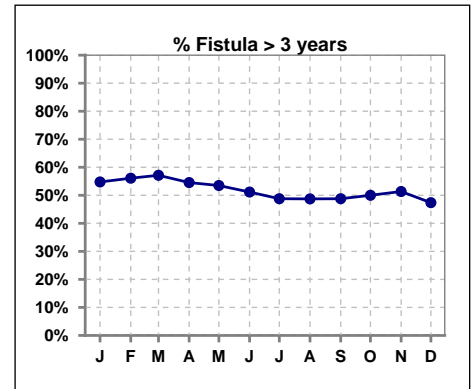
**Catheters > 90 days**

	Jan	Feb	Mar	Apr	May	Jun	Jul	Aug	Sep	Oct	Nov	Dec
# Access	70	70	71	72	69	64	68	66	64	61	59	61
# Catheters	7	8	9	12	12	11	14	16	14	15	15	14
<b>% Catheters</b>	<b>10%</b>	<b>11%</b>	<b>13%</b>	<b>17%</b>	<b>17%</b>	<b>17%</b>	<b>21%</b>	<b>24%</b>	<b>22%</b>	<b>25%</b>	<b>25%</b>	<b>23%</b>

Definition: Catheter in use on last treatment of the month



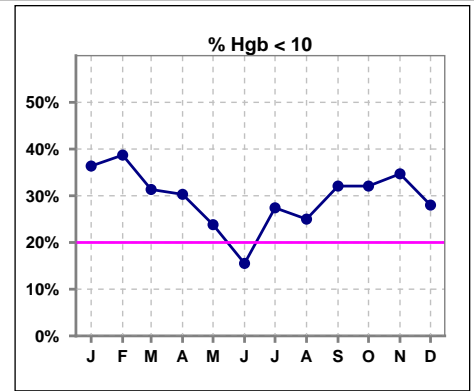
	Jan	Feb	Mar	Apr	May	Jun	Jul	Aug	Sep	Oct	Nov	Dec
# Fistula	42	41	42	44	43	43	41	39	41	38	37	38
# Fistula > 3 yrs	23	23	24	24	23	22	20	19	20	19	19	18
<b>% Fistula &gt; 3 yrs</b>	<b>55%</b>	<b>56%</b>	<b>57%</b>	<b>55%</b>	<b>53%</b>	<b>51%</b>	<b>49%</b>	<b>49%</b>	<b>49%</b>	<b>50%</b>	<b>51%</b>	<b>47%</b>



**V. ANEMIA**

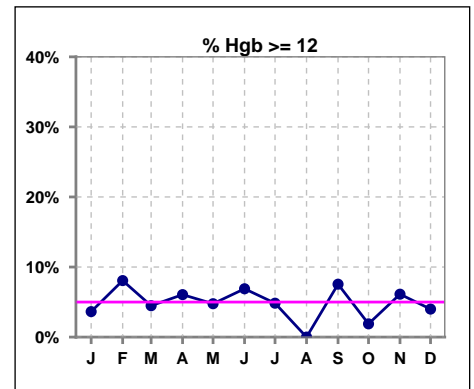
	Jan	Feb	Mar	Apr	May	Jun	Jul	Aug	Sep	Oct	Nov	Dec
# Hgb	55	62	67	66	63	58	62	56	53	53	49	50
# Hgb < 10	20	24	21	20	15	9	17	14	17	17	17	14
Pop. Mean	10.1	10.1	10.4	10.5	10.5	10.8	10.4	10.6	10.5	10.3	10.4	10.5
Std. Deviation	1.5	1.6	1.1	1.4	1.3	1.1	1.4	1.0	1.4	1.3	1.4	1.2
% Hgb < 10	36%	39%	31%	30%	24%	16%	27%	25%	32%	32%	35%	28%

Note: Excludes patients who received no ESA in month.



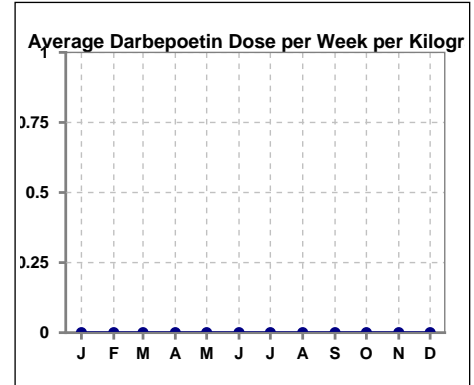
	Jan	Feb	Mar	Apr	May	Jun	Jul	Aug	Sep	Oct	Nov	Dec
# Hgb	55	62	67	66	63	58	62	56	53	53	49	50
# Hgb >= 12	2	5	3	4	3	4	3	0	4	1	3	2
Pop. Mean	10.1	10.1	10.4	10.5	10.5	10.8	10.4	10.6	10.5	10.3	10.4	10.5
Std. Deviation	1.5	1.6	1.1	1.4	1.3	1.1	1.4	1.0	1.4	1.3	1.4	1.2
% Hgb >= 12	4%	8%	4%	6%	5%	7%	5%	0%	8%	2%	6%	4%

Note: Excludes patients who received no ESA in month.



**Average Darbepoetin Dose per Week per Kilogram**

	Jan	Feb	Mar	Apr	May	Jun	Jul	Aug	Sep	Oct	Nov	Dec
# Average Darbepoetin	0	0	0	0	0	0	0	0	0	0	0	0

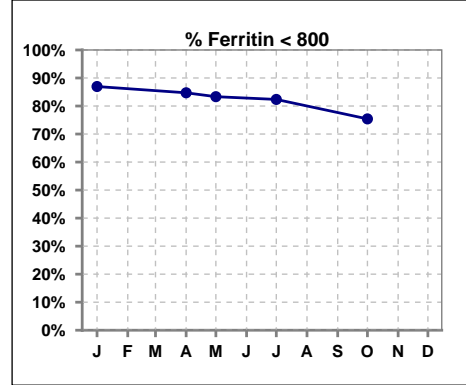




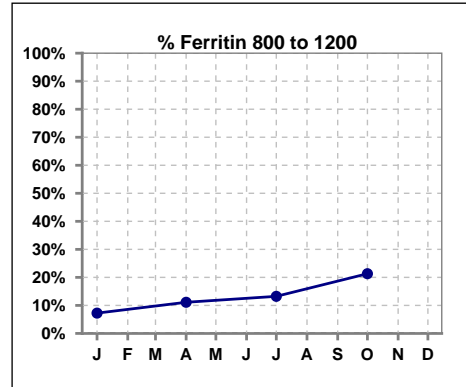
**V. ANEMIA - CONT.**

**Iron Profile**

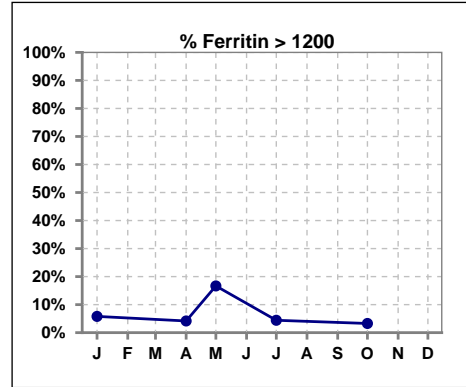
	Jan	Feb	Mar	Apr	May	Jun	Jul	Aug	Sep	Oct	Nov	Dec
# Ferritin	69			72	6		68			61		
# Ferritin < 800	60			61	5		56			46		
Pop. Mean	473			477	428		531			566		
Std. Deviation	408			350	418		342			330		
<b>% Ferritin &lt; 800</b>	<b>87%</b>			<b>85%</b>	<b>83%</b>		<b>82%</b>			<b>75%</b>		



	Jan	Feb	Mar	Apr	May	Jun	Jul	Aug	Sep	Oct	Nov	Dec
# Ferritin	69			72	6		68			61		
# Ferritin 800 to 1200	5			8			9			13		
Pop. Mean	473			477	428		531			566		
Std. Deviation	408			350	418		342			330		
<b>% Ferritin 800 to 1200</b>	<b>7%</b>			<b>11%</b>			<b>13%</b>			<b>21%</b>		

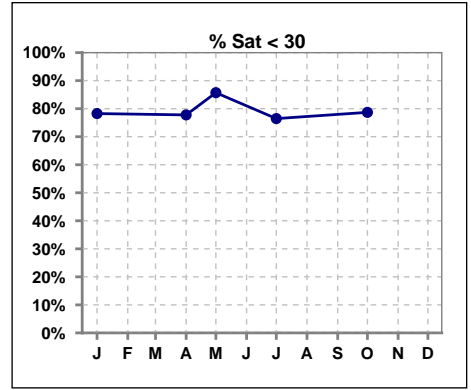


	Jan	Feb	Mar	Apr	May	Jun	Jul	Aug	Sep	Oct	Nov	Dec
# Ferritin	69			72	6		68			61		
# Ferritin > 1200	4			3	1		3			2		
Pop. Mean	473			477	428		531			566		
Std. Deviation	408			350	418		342			330		
<b>% Ferritin &gt; 1200</b>	<b>6%</b>			<b>4%</b>	<b>17%</b>		<b>4%</b>			<b>3%</b>		

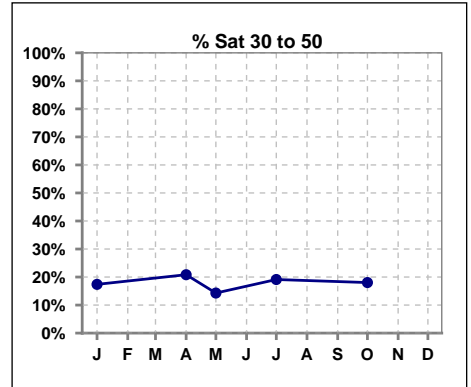


**V. ANEMIA - CONT.**

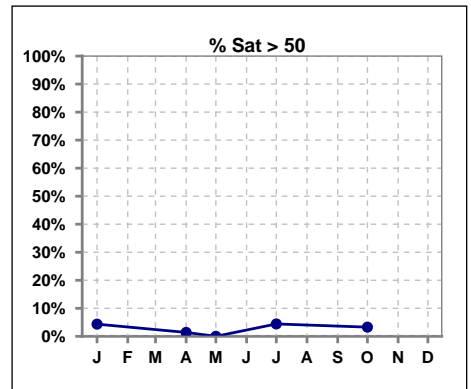
	Jan	Feb	Mar	Apr	May	Jun	Jul	Aug	Sep	Oct	Nov	Dec
# % Sat	69			72	7		68			61		
# % Sat < 30	54			56	6		52			48		
Pop. Mean	24			22	18		24			25		
Std. Deviation	13			13	7		12			12		
<b>% % Sat &lt; 30</b>	<b>78%</b>			<b>78%</b>	<b>86%</b>		<b>76%</b>			<b>79%</b>		



	Jan	Feb	Mar	Apr	May	Jun	Jul	Aug	Sep	Oct	Nov	Dec
# % Sat	69			72	7		68			61		
# % Sat 30 to 50	12			15	1		13			11		
Pop. Mean	24			22	18		24			25		
Std. Deviation	13			13	7		12			12		
<b>% % Sat 30 to 50</b>	<b>17%</b>			<b>21%</b>	<b>14%</b>		<b>19%</b>			<b>18%</b>		



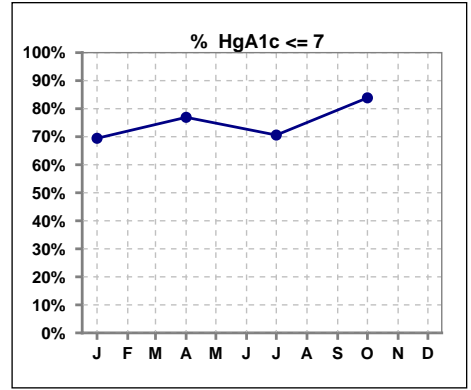
	Jan	Feb	Mar	Apr	May	Jun	Jul	Aug	Sep	Oct	Nov	Dec
# % Sat	69			72	7		68			61		
# % Sat > 50	3			1	0		3			2		
Pop. Mean	24			22	18		24			25		
Std. Deviation	13			13	7		12			12		
<b>% % Sat &gt; 50</b>	<b>4%</b>			<b>1%</b>	<b>0%</b>		<b>4%</b>			<b>3%</b>		



Methodology: a) All labs for 'Adequacy of Dialysis', 'Nutrition', 'Osteodystrophy', 'Anemia' and 'Diabetes' based on last value of month; b) BP's and #L processed are average of all values for month; c) Access data takes last access of month; d) Values for SGA and 'Infection Control' use most recent result.

**VI. Diabetes**

	Jan	Feb	Mar	Apr	May	Jun	Jul	Aug	Sep	Oct	Nov	Dec
# HgA1c	36			39			34			31		
# HgA1c <= 7	25			30			24			26		
Pop. Mean	7.0			6.3			6.7			6.3		
Std. Deviation	2.14			1.48			1.81			1.40		
<b>% HgA1c &lt;= 7</b>	<b>69%</b>			<b>77%</b>			<b>71%</b>			<b>84%</b>		

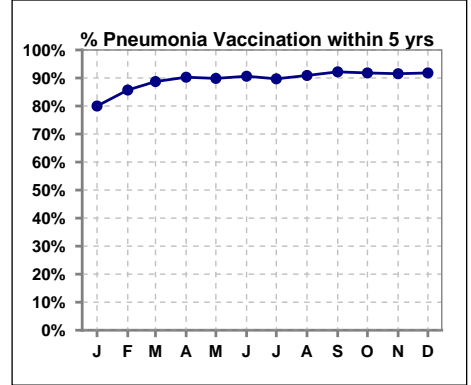


Methodology: a) All labs for 'Adequacy of Dialysis', 'Nutrition', 'Osteodystrophy', 'Anemia' and 'Diabetes' based on last value of month; b) BP's and #L processed are average of all values for month; c) Access data takes last access of month; d) Values for SGA and 'Infection Control' use most recent result.

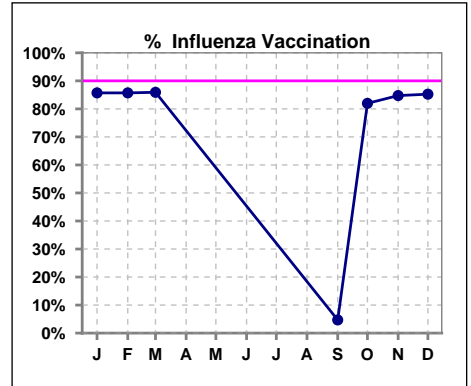
**VII. Infection Control**

**Pneumonia vaccination within the past five years**

	Jan	Feb	Mar	Apr	May	Jun	Jul	Aug	Sep	Oct	Nov	Dec
# Patient	70	70	71	72	69	64	68	66	64	61	59	61
# Pneumonia	56	60	63	65	62	58	61	60	59	56	54	56
% Pneumonia	80%	86%	89%	90%	90%	91%	90%	91%	92%	92%	92%	92%



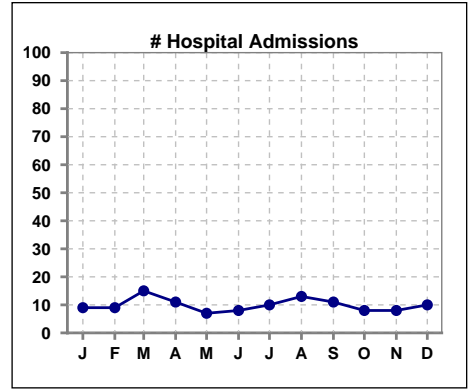
	Jan	Feb	Mar	Apr	May	Jun	Jul	Aug	Sep	Oct	Nov	Dec
# Patient	70	70	71						64	61	59	61
# Influenza	60	60	61						3	50	50	52
% Influenza	86%	86%	86%						5%	82%	85%	85%



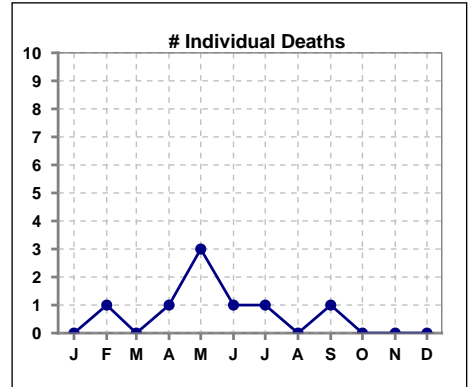
Methodology: a) All labs for 'Adequacy of Dialysis', 'Nutrition', 'Osteodystrophy', 'Anemia' and 'Diabetes' based on last value of month; b) BP's and #L processed are average of all values for month; c) Access data takes last access of month; d) Values for SGA and 'Infection Control' use most recent result.

**VIII. Outcome measures**

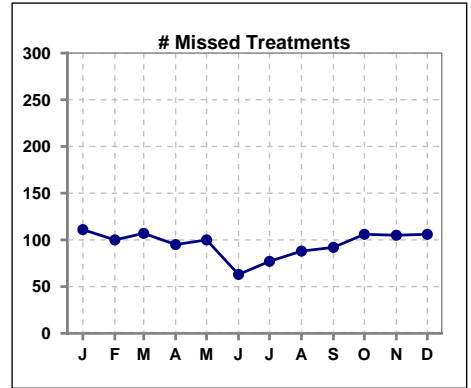
	Jan	Feb	Mar	Apr	May	Jun	Jul	Aug	Sep	Oct	Nov	Dec
<b># Patient</b>	70	70	71	72	69	64	68	66	64	61	59	61
<b># Hospital Admissions</b>	9	9	15	11	7	8	10	13	11	8	8	10



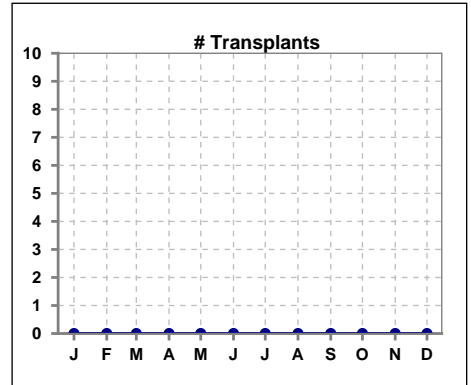
	Jan	Feb	Mar	Apr	May	Jun	Jul	Aug	Sep	Oct	Nov	Dec
<b># Patient</b>	70	70	71	72	69	64	68	66	64	61	59	61
<b># Individual Deaths</b>	0	1	0	1	3	1	1	0	1	0	0	0



	Jan	Feb	Mar	Apr	May	Jun	Jul	Aug	Sep	Oct	Nov	Dec
<b># Patient</b>	70	70	71	72	69	64	68	66	64	61	59	61
<b># Missed Treatments</b>	111	100	107	95	100	63	77	88	92	106	105	106



	Jan	Feb	Mar	Apr	May	Jun	Jul	Aug	Sep	Oct	Nov	Dec
<b># Patient</b>	70	70	71	72	69	64	68	66	64	61	59	61
<b># Transplants</b>	0	0	0	0	0	0	0	0	0	0	0	0



Methodology: a) All labs for 'Adequacy of Dialysis', 'Nutrition', 'Osteodystrophy', 'Anemia' and 'Diabetes' based on last value of month; b) BP's and #L processed are average of all values for month; c) Access data takes last access of month; d) Values for SGA and 'Infection Control' use most recent result.