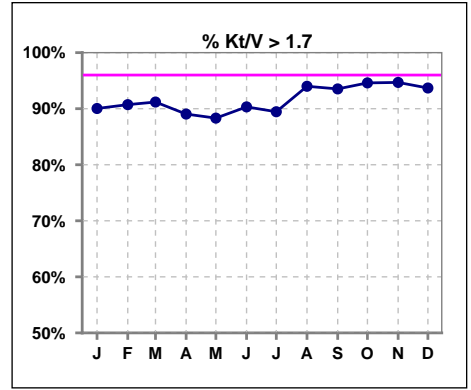
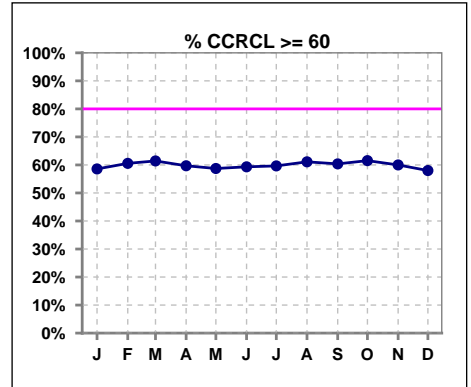


I. ADEQUACY OF DIALYSIS

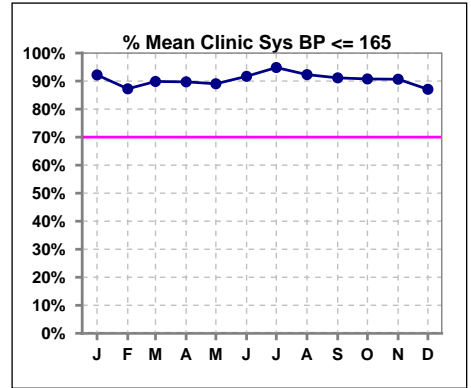
	Jan	Feb	Mar	Apr	May	Jun	Jul	Aug	Sep	Oct	Nov	Dec
# Kt/V - CA/CC PD	281	291	295	292	291	279	294	300	309	315	320	317
# Kt/V >= 1.7	253	264	269	260	257	252	263	282	289	298	303	297
Pop. Mean	2.14	2.16	2.13	2.12	2.12	2.12	2.12	2.19	2.24	2.34	2.38	2.35
Std. Deviation	0.49	0.52	0.50	0.50	0.50	0.49	0.51	0.53	0.57	0.76	0.81	0.77
% Kt/V >= 1.7	90%	91%	91%	89%	88%	90%	89%	94%	94%	95%	95%	94%



	Jan	Feb	Mar	Apr	May	Jun	Jul	Aug	Sep	Oct	Nov	Dec
# CRCL CA/CC PD	70	71	70	67	63	59	57	54	53	52	50	50
# CCRCL >= 60	41	43	43	40	37	35	34	33	32	32	30	29
Pop. Mean	73.69	74.41	74.78	74.60	75.29	76.53	76.44	76.46	75.15	75.49	75.32	74.55
Std. Deviation	31.11	30.91	30.98	31.55	32.15	32.66	32.64	32.92	31.77	32.01	32.61	32.71
% CCRCL >= 60	59%	61%	61%	60%	59%	59%	60%	61%	60%	62%	60%	58%

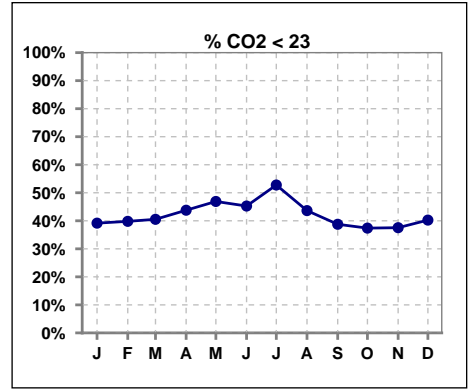


	Jan	Feb	Mar	Apr	May	Jun	Jul	Aug	Sep	Oct	Nov	Dec
# Mean Clinic Sys BP	282	298	306	292	292	289	291	299	305	314	300	325
# Sys BP <= 165	262	264	279	262	262	266	276	277	280	286	277	285
Pop. Mean	138	140	138	140	143	137	134	137	140	138	144	142
Std. Deviation	20.0	20.3	20.2	21.1	36.3	20.6	21.2	19.6	21.8	21.4	78.0	21.1
% Sys BP <=165	92%	87%	90%	90%	89%	92%	95%	92%	91%	91%	91%	87%

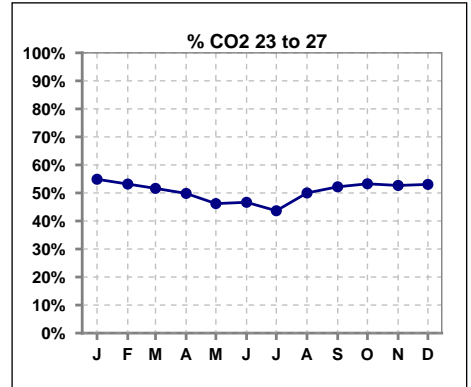


I. ADEQUACY OF DIALYSIS - CONT.

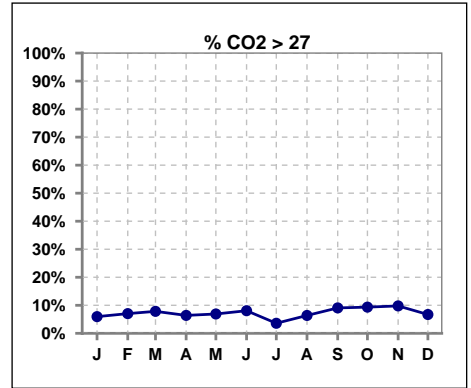
	Jan	Feb	Mar	Apr	May	Jun	Jul	Aug	Sep	Oct	Nov	Dec
# CO2	286	299	306	297	290	285	307	314	320	321	317	328
# CO2 < 23	112	119	124	130	136	129	162	137	124	120	119	132
Pop. Mean	23	23	23	23	23	23	22	23	23	24	23	23
Std. Deviation	3.11	2.93	3.13	3.08	3.17	3.25	3.06	3.08	3.22	3.01	3.08	3.18
% CO2 < 23	39%	40%	41%	44%	47%	45%	53%	44%	39%	37%	38%	40%



	Jan	Feb	Mar	Apr	May	Jun	Jul	Aug	Sep	Oct	Nov	Dec
# CO2	286	299	306	297	290	285	307	314	320	321	317	328
# CO2 23 to 27	157	159	158	148	134	133	134	157	167	171	167	174
Pop. Mean	23	23	23	23	23	23	22	23	23	24	23	23
Std. Deviation	3.11	2.93	3.13	3.08	3.17	3.25	3.06	3.08	3.22	3.01	3.08	3.18
% CO2 23 to 27	55%	53%	52%	50%	46%	47%	44%	50%	52%	53%	53%	53%



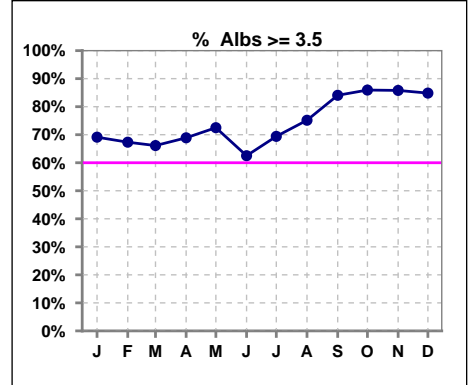
	Jan	Feb	Mar	Apr	May	Jun	Jul	Aug	Sep	Oct	Nov	Dec
# CO2	286	299	306	297	290	285	307	314	320	321	317	328
# CO2 > 27	17	21	24	19	20	23	11	20	29	30	31	22
Pop. Mean	23	23	23	23	23	23	22	23	23	24	23	23
Std. Deviation	3.11	2.93	3.13	3.08	3.17	3.25	3.06	3.08	3.22	3.01	3.08	3.18
% CO2 > 27	6%	7%	8%	6%	7%	8%	4%	6%	9%	9%	10%	7%



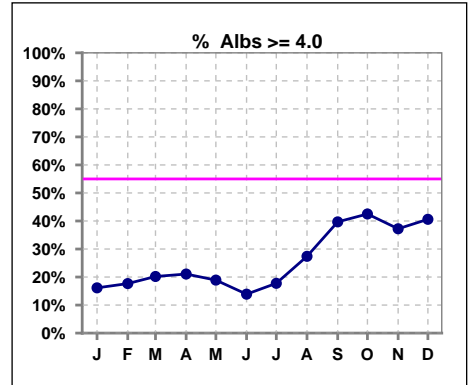
*Albumin values use BCG method - as of July 2001

II. NUTRITION

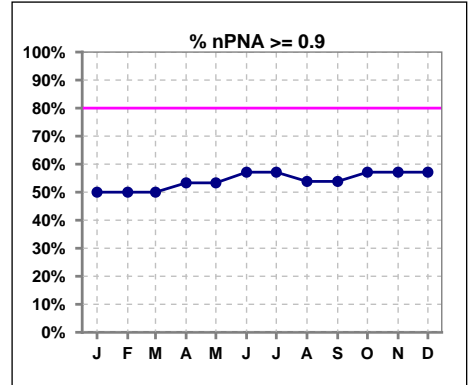
	Jan	Feb	Mar	Apr	May	Jun	Jul	Aug	Sep	Oct	Nov	Dec
# Albumin	285	300	307	299	291	288	304	314	320	320	317	330
# Albumin >= 3.5	197	202	203	206	211	180	211	236	269	275	272	280
Pop. Mean	3.6	3.6	3.6	3.6	3.6	3.6	3.6	3.7	3.8	3.8	3.8	3.8
Std. Deviation	0.37	0.38	0.39	0.38	0.38	0.40	0.37	0.39	0.38	0.37	0.38	0.39
% Alb >= 3.5	69%	67%	66%	69%	73%	63%	69%	75%	84%	86%	86%	85%



	Jan	Feb	Mar	Apr	May	Jun	Jul	Aug	Sep	Oct	Nov	Dec
# Albumin	285	300	307	299	291	288	304	314	320	320	317	330
# Albumin >= 4.0	46	53	62	63	55	40	54	86	127	136	118	134
Pop. Mean	3.6	3.6	3.6	3.6	3.6	3.6	3.6	3.7	3.8	3.8	3.8	3.8
Std. Deviation	0.37	0.38	0.39	0.38	0.38	0.40	0.37	0.39	0.38	0.37	0.38	0.39
% Alb >= 4.0	16%	18%	20%	21%	19%	14%	18%	27%	40%	43%	37%	41%



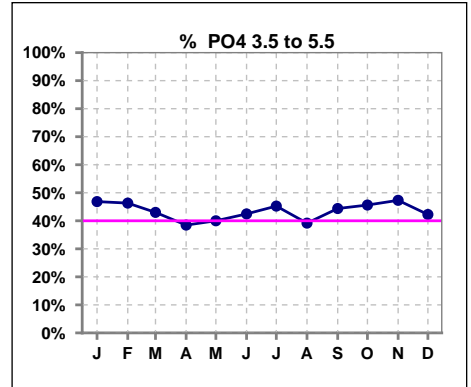
	Jan	Feb	Mar	Apr	May	Jun	Jul	Aug	Sep	Oct	Nov	Dec
# nPNA	14	14	14	15	15	14	14	13	13	14	14	14
# nPNA >= 0.9	7	7	7	8	8	8	8	7	7	8	8	8
Pop. Mean	1.0	1.0	1.0	1.0	1.0	1.1	1.1	1.1	1.1	1.1	1.1	1.1
Std. Deviation	0.40	0.40	0.40	0.39	0.39	0.38	0.38	0.39	0.39	0.38	0.38	0.38
% nPNA >= 0.9	50%	50%	50%	53%	53%	57%	57%	54%	54%	57%	57%	57%



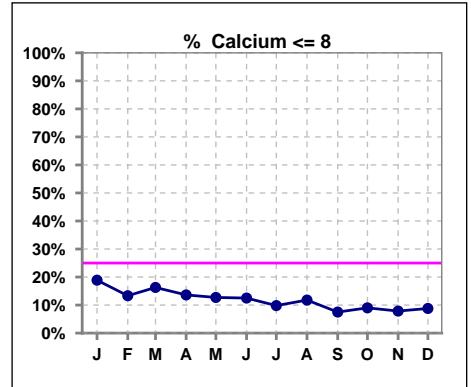
Lab methodology for PTH changed January 2012

III. OSTEODYSTROPHY

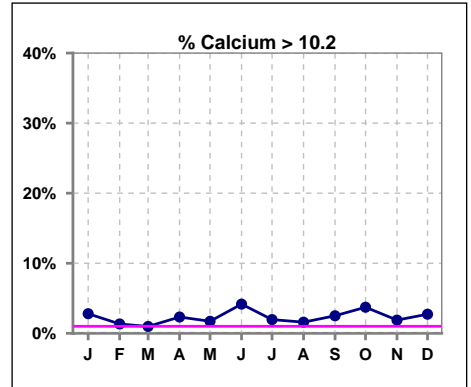
	Jan	Feb	Mar	Apr	May	Jun	Jul	Aug	Sep	Oct	Nov	Dec
# PO4	286	298	307	299	290	285	305	314	320	320	315	329
# PO4 3.5 to 5.5	134	138	132	115	116	121	138	123	142	146	149	139
Pop. Mean	6.0	5.9	6.1	6.2	6.1	6.2	6.0	6.1	6.0	5.9	5.9	6.0
Std. Deviation	1.80	1.68	1.91	1.87	1.81	1.81	1.72	1.80	1.89	1.75	1.86	1.81
% PO4 3.5 to 5.5	47%	46%	43%	38%	40%	42%	45%	39%	44%	46%	47%	42%



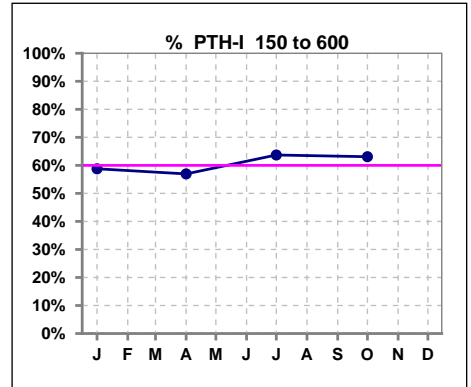
	Jan	Feb	Mar	Apr	May	Jun	Jul	Aug	Sep	Oct	Nov	Dec
# Calcium	286	300	307	301	291	288	306	314	320	322	318	330
# Calcium <= 8	54	40	50	41	37	36	30	37	24	29	25	29
Pop. Mean	8.8	8.9	8.8	8.9	8.9	9.0	9.0	9.0	9.1	9.0	9.0	9.0
Std. Deviation	0.79	0.72	0.72	0.81	0.73	0.77	0.74	0.72	0.68	0.74	0.71	0.76
% Calcium <= 8	19%	13%	16%	14%	13%	13%	10%	12%	8%	9%	8%	9%



	Jan	Feb	Mar	Apr	May	Jun	Jul	Aug	Sep	Oct	Nov	Dec
# Calcium	286	300	307	301	291	288	306	314	320	322	318	330
# Calcium > 10.2	8	4	3	7	5	12	6	5	8	12	6	9
Pop. Mean	8.8	8.9	8.8	8.9	8.9	9.0	9.0	9.0	9.1	9.0	9.0	9.0
Std. Deviation	0.79	0.72	0.72	0.81	0.73	0.77	0.74	0.72	0.68	0.74	0.71	0.76
% Calcium > 10.2	3%	1%	1%	2%	2%	4%	2%	2%	3%	4%	2%	3%



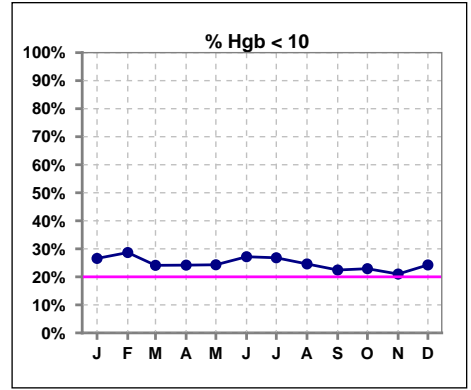
	Jan	Feb	Mar	Apr	May	Jun	Jul	Aug	Sep	Oct	Nov	Dec
# PTH-I	279			295			303			317		
# PTH-I 150 to 600	164			168			193			200		
Pop. Mean	448			486			440			446		
Std. Deviation	314			371			332			375		
% PTH-I 150 to 600	59%			57%			64%			63%		



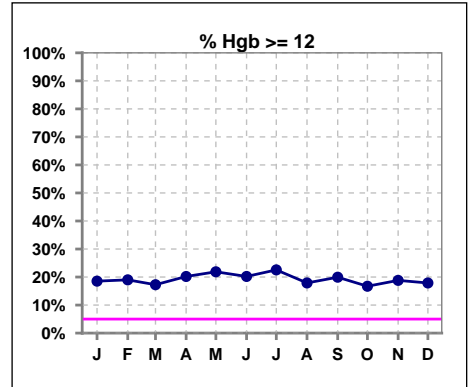
Methodology: a) KtV, CRCL and nPNa values are 4 month rolling mean of last value for each month, all other report lab results are based on last value of month; b) BP's are average of all values for month.

IV. ANEMIA

	Jan	Feb	Mar	Apr	May	Jun	Jul	Aug	Sep	Oct	Nov	Dec
# Hgb	286	300	307	302	288	287	306	313	321	323	319	330
# Hgb < 10	76	86	74	73	70	78	82	77	72	74	67	80
Pop. Mean	10.8	10.7	10.8	10.8	10.9	10.8	10.8	10.8	10.9	10.8	10.8	10.8
Std. Deviation	1.4	1.6	1.5	1.5	1.5	1.5	1.5	1.5	1.5	1.4	1.5	1.4
% Hgb < 10	27%	29%	24%	24%	24%	27%	27%	25%	22%	23%	21%	24%



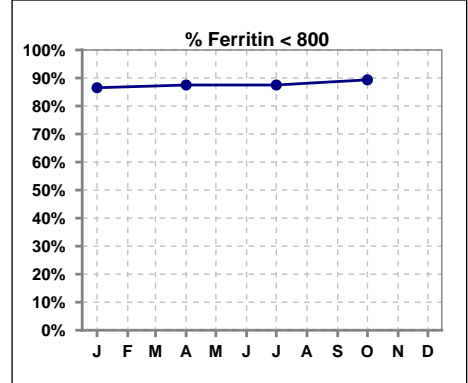
	Jan	Feb	Mar	Apr	May	Jun	Jul	Aug	Sep	Oct	Nov	Dec
# Hgb	286	300	307	302	288	287	306	313	321	323	319	330
# Hgb >= 12	53	57	53	61	63	58	69	56	64	54	60	59
Pop. Mean	10.8	10.7	10.8	10.8	10.9	10.8	10.8	10.8	10.9	10.8	10.8	10.8
Std. Deviation	1.4	1.6	1.5	1.5	1.5	1.5	1.5	1.5	1.5	1.4	1.5	1.4
% Hgb >= 12	19%	19%	17%	20%	22%	20%	23%	18%	20%	17%	19%	18%



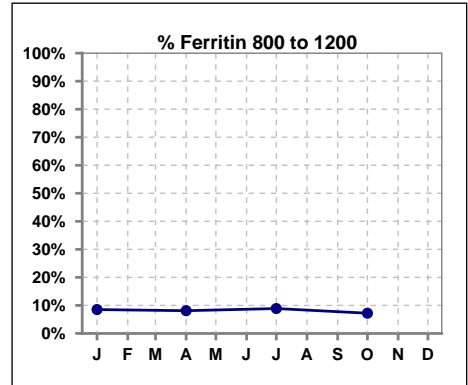
IV. ANEMIA - CONT.

Iron Profile

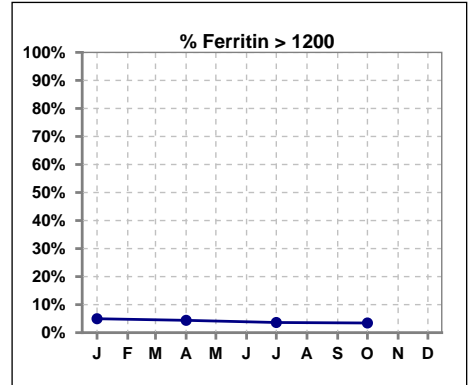
	Jan	Feb	Mar	Apr	May	Jun	Jul	Aug	Sep	Oct	Nov	Dec
# Ferritin	282			296			304			319		
# Ferritin < 800	244			259			266			285		
Pop. Mean	440			411			400			406		
Std. Deviation	421			412			401			381		
% Ferritin < 800	87%			88%			88%			89%		



	Jan	Feb	Mar	Apr	May	Jun	Jul	Aug	Sep	Oct	Nov	Dec
# Ferritin	282			296			304			319		
# Ferritin 800 to 1200	24			24			27			23		
Pop. Mean	440			411			400			406		
Std. Deviation	421			412			401			381		
% Ferritin 800 to 1200	9%			8%			9%			7%		

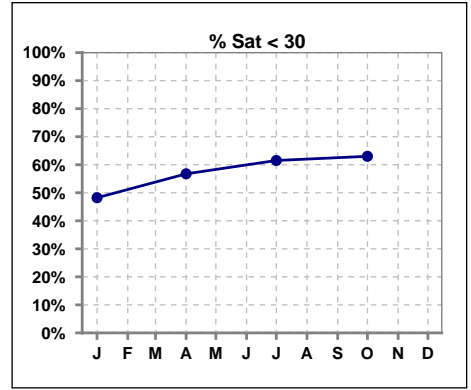


	Jan	Feb	Mar	Apr	May	Jun	Jul	Aug	Sep	Oct	Nov	Dec
# Ferritin	282			296			304			319		
# Ferritin > 1200	14			13			11			11		
Pop. Mean	440			411			400			406		
Std. Deviation	421			412			401			381		
% Ferritin > 1200	5%			4%			4%			3%		

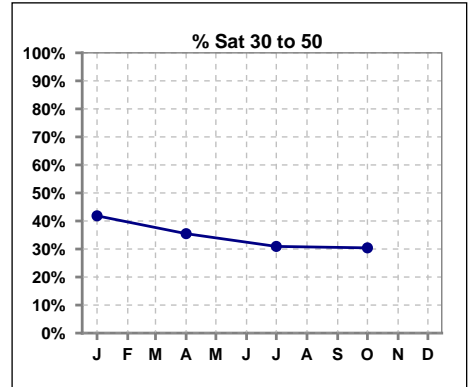


IV. ANEMIA - CONT.

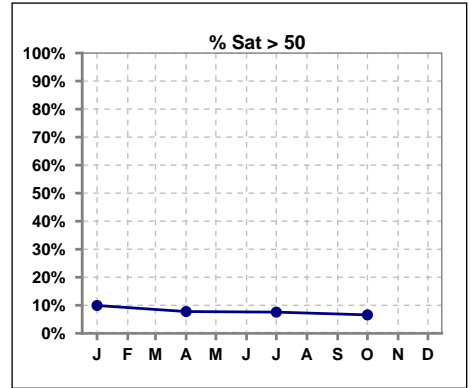
	Jan	Feb	Mar	Apr	May	Jun	Jul	Aug	Sep	Oct	Nov	Dec
# % Sat	282			296			304			319		
# % Sat < 30	136			168			187			201		
Pop. Mean	33			31			30			29		
Std. Deviation	16			15			14			15		
% % Sat < 30	48%			57%			62%			63%		



	Jan	Feb	Mar	Apr	May	Jun	Jul	Aug	Sep	Oct	Nov	Dec
# % Sat	282			296			304			319		
# % Sat 30 to 50	118			105			94			97		
Pop. Mean	33			31			30			29		
Std. Deviation	16			15			14			15		
% Sat% 30 to 50	42%			35%			31%			30%		

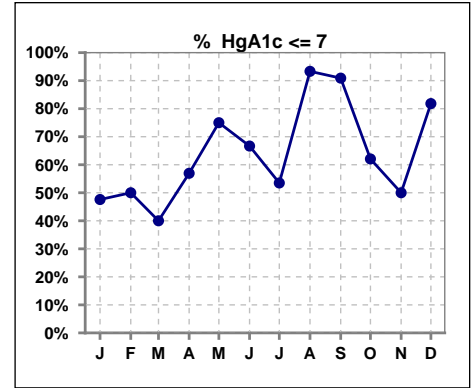


	Jan	Feb	Mar	Apr	May	Jun	Jul	Aug	Sep	Oct	Nov	Dec
# % Sat	282			296			304			319		
# % Sat > 50	28			23			23			21		
Pop. Mean	33			31			30			29		
Std. Deviation	16			15			14			15		
% Sat% > 50	10%			8%			8%			7%		



V. Diabetes

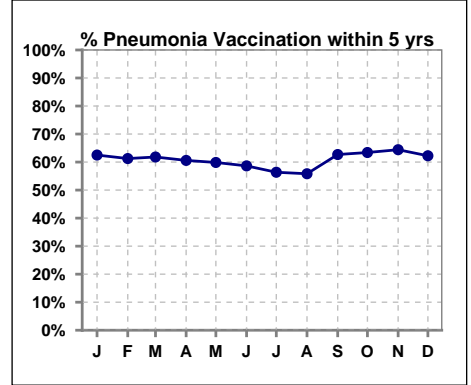
	Jan	Feb	Mar	Apr	May	Jun	Jul	Aug	Sep	Oct	Nov	Dec
# HgA1c	145	10	10	151	8	9	157	15	11	174	6	11
# HgA1c <= 7	69	5	4	86	6	6	84	14	10	108	3	9
Pop. Mean	7.3	7.3	7.9	7.0	6.6	6.2	7.1	6.5	6.1	6.8	7.1	6.2
Std. Deviation	1.47	1.50	2.34	1.48	0.86	1.04	1.40	1.27	0.89	1.53	2.30	1.29
% HgA1c <= 7	48%	50%	40%	57%	75%	67%	54%	93%	91%	62%	50%	82%



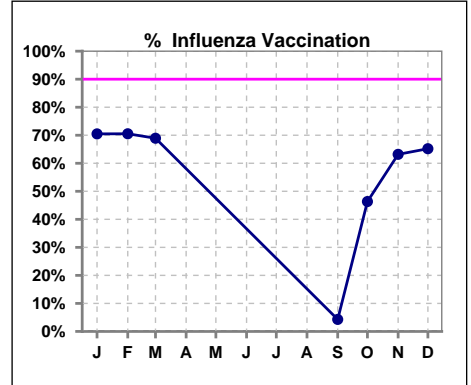
VI. Infection Control

Pneumonia vaccination within the past five years

	Jan	Feb	Mar	Apr	May	Jun	Jul	Aug	Sep	Oct	Nov	Dec
# Patient	288	302	309	302	299	295	314	317	327	328	326	339
# Pneumonia	180	185	191	183	179	173	177	177	205	208	210	211
% Pneumonia	63%	61%	62%	61%	60%	59%	56%	56%	63%	63%	64%	62%



	Jan	Feb	Mar	Apr	May	Jun	Jul	Aug	Sep	Oct	Nov	Dec
# Patient	288	302	309						327	328	326	339
# Influenza	203	213	213						14	152	206	221
% Influenza	70%	71%	69%						4%	46%	63%	65%



Exit Site Infection Rate

	Jan	Feb	Mar	Apr	May	Jun	Jul	Aug	Sep	Oct	Nov	Dec
Current Month	69.65	130.54	297.01	0	142.74	267.46	0	147.35	298.03	78.30	0	328.83
Rolling Year-to-date	0.10	0.10	0.10	0.11	0.11	0.11	0.11	0.10	0.11	0.11	0.11	0.10

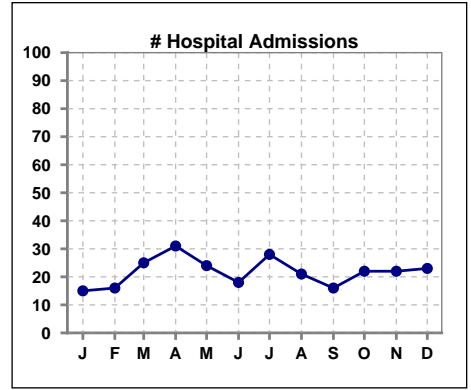
Peritonitis Infection Rate

	Jan	Feb	Mar	Apr	May	Jun	Jul	Aug	Sep	Oct	Nov	Dec
Current Month	39.80	52.22	74.25	93.70	31.72	53.49	32.33	42.10	149.01	34.80	103.13	54.80
Rolling Year-to-date	0.27	0.28	0.28	0.27	0.27	0.25	0.29	0.29	0.28	0.29	0.28	0.25

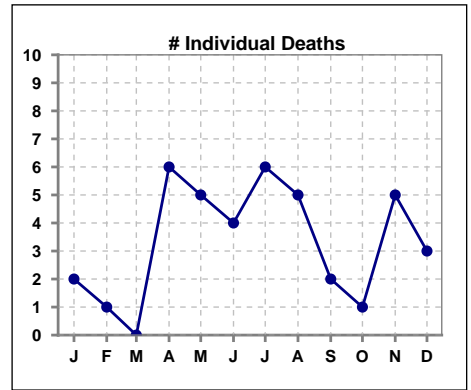
Methodology: a) Kt/V, CRCL and nPNa values are 4 month rolling mean of last value for each month, all other report lab results are based on last value of month; b) BP's are average of all values for month.

VIII. Outcome measures

	Jan	Feb	Mar	Apr	May	Jun	Jul	Aug	Sep	Oct	Nov	Dec
# Patient	288	302	309	302	299	295	314	317	327	328	326	339
# Hospital Admissions	15	16	25	31	24	18	28	21	16	22	22	23



	Jan	Feb	Mar	Apr	May	Jun	Jul	Aug	Sep	Oct	Nov	Dec
# Patient	288	302	309	302	299	295	314	317	327	328	326	339
# Individual Deaths	2	1	0	6	5	4	6	5	2	1	5	3



	Jan	Feb	Mar	Apr	May	Jun	Jul	Aug	Sep	Oct	Nov	Dec
# Patient	288	302	309	302	299	295	314	317	327	328	326	339
# Transplants	2	1	4	5	2	3	0	4	1	2	3	0

