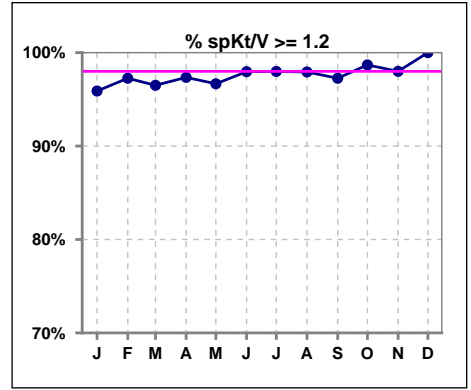
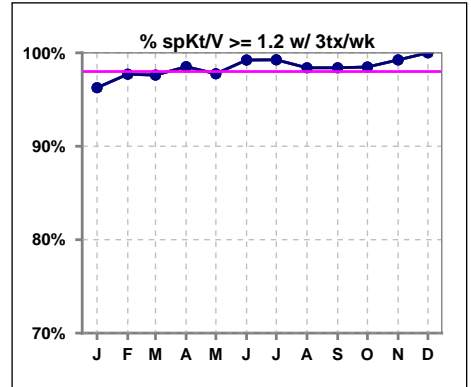


I. ADEQUACY OF DIALYSIS

	Jan	Feb	Mar	Apr	May	Jun	Jul	Aug	Sep	Oct	Nov	Dec
# spKt/V	146	146	143	151	150	147	149	145	146	152	150	153
# spKt/V >= 1.2	140	142	138	147	145	144	146	142	142	150	147	153
Pop. Mean	1.70	1.67	1.63	1.69	1.65	1.68	1.69	1.68	1.71	1.69	1.71	1.70
Std. Deviation	0.36	0.33	0.28	0.33	0.35	0.34	0.38	0.34	0.40	0.33	0.40	0.35
% spKt/V >= 1.2	96%	97%	97%	97%	97%	98%	98%	98%	97%	99%	98%	100%

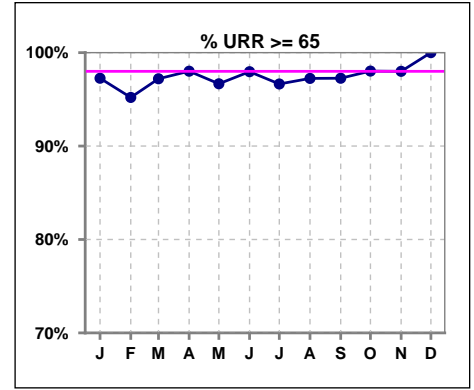


	Jan	Feb	Mar	Apr	May	Jun	Jul	Aug	Sep	Oct	Nov	Dec
# spKt/V w/ 3tx/wk	134	131	126	135	134	130	134	125	125	132	132	131
# spKt/V >= 1.2 w/3tx/wk	129	128	123	133	131	129	133	123	123	130	131	131
Pop. Mean	1.70	1.68	1.63	1.70	1.66	1.70	1.71	1.71	1.75	1.72	1.73	1.71
Std. Deviation	0.36	0.33	0.27	0.33	0.34	0.34	0.36	0.34	0.40	0.33	0.41	0.36
% >= 1.2 w/3tx/wk	96%	98%	98%	99%	98%	99%	99%	98%	98%	98%	99%	100%

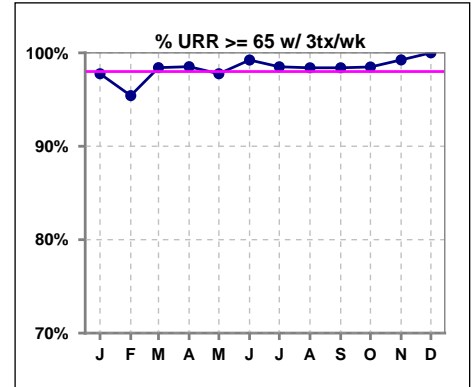


I. ADEQUACY OF DIALYSIS - CONT.

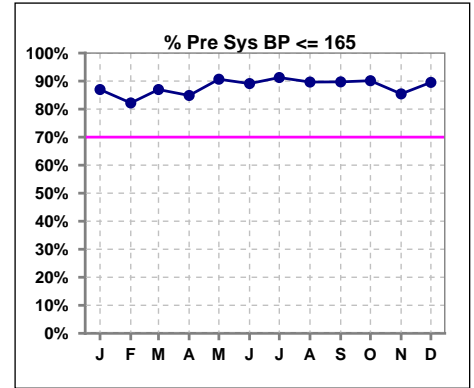
	Jan	Feb	Mar	Apr	May	Jun	Jul	Aug	Sep	Oct	Nov	Dec
# URR	146	146	143	151	150	147	149	145	146	152	150	153
# URR >= 65	142	139	139	148	145	144	144	141	142	149	147	153
Pop. Mean	76	75	75	76	75	76	76	76	76	76	76	76
Std. Deviation	6.60	6.45	5.94	5.90	8.20	6.13	8.39	6.32	6.48	6.02	6.75	6.01
% URR >= 65	97%	95%	97%	98%	97%	98%	97%	97%	97%	98%	98%	100%



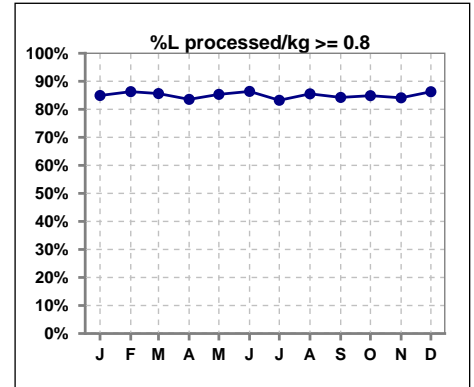
	Jan	Feb	Mar	Apr	May	Jun	Jul	Aug	Sep	Oct	Nov	Dec
# URR w/ 3tx/wk	134	131	126	135	134	130	134	125	125	132	132	131
# URR>=65 w/ 3tx/wk	131	125	124	133	131	129	132	123	123	130	131	131
Pop. Mean	76	76	75	76	75	76	76	76	77	77	76	76
Std. Deviation	6.46	6.33	5.58	5.71	6.43	5.90	7.69	6.15	6.12	5.81	6.75	5.99
% URR>=65 w/ 3tx/wk	98%	95%	98%	99%	98%	99%	99%	98%	98%	98%	99%	100%



	Jan	Feb	Mar	Apr	May	Jun	Jul	Aug	Sep	Oct	Nov	Dec
# Pre Sys BP	146	146	146	152	150	147	149	145	146	152	151	153
# Pre Sys BP <= 165	128	122	129	133	136	132	139	131	131	139	130	138
Pop. Mean	143	145	143	143	141	141	140	139	141	142	143	141
Std. Deviation	19.3	21.3	20.5	21.1	20.8	19.9	18.2	18.5	19.3	18.9	20.2	21.0
% Pre Sys BP <=165	87%	82%	87%	85%	91%	89%	91%	90%	90%	90%	85%	90%



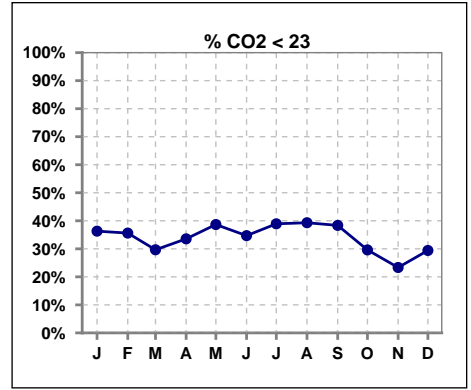
	Jan	Feb	Mar	Apr	May	Jun	Jul	Aug	Sep	Oct	Nov	Dec
# L processed/kg	146	146	146	152	150	147	149	145	146	152	151	153
# L processed/kg>=0.8	124	126	125	127	128	127	124	124	123	129	127	132
Pop. Mean	1	1	1	1	1	1	1	1	1	1	1	1
Std. Deviation	0.3	0.3	0.3	0.3	0.3	0.3	0.3	0.3	0.3	0.3	0.3	0.3
% L processed/kg>=0.8	85%	86%	86%	84%	85%	86%	83%	86%	84%	85%	84%	86%



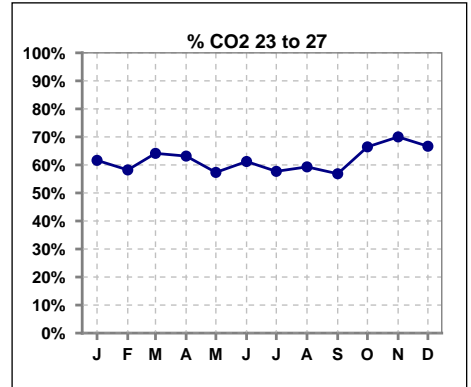
Methodology: a) All labs for 'Adequacy of Dialysis', 'Nutrition', 'Osteodystrophy', 'Anemia' and 'Diabetes' based on last value of month; b) BP's and #L processed are average of all values for month; c) Access data takes last access of month; d) Values for SGA and 'Infection Control' use most recent result.

I. ADEQUACY OF DIALYSIS - CONT.

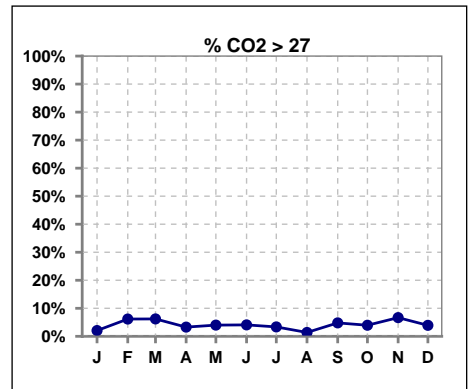
	Jan	Feb	Mar	Apr	May	Jun	Jul	Aug	Sep	Oct	Nov	Dec
# CO2	146	146	145	152	150	147	149	145	146	152	150	153
# CO2 < 23	53	52	43	51	58	51	58	57	56	45	35	45
Pop. Mean	23	23	24	23	23	23	23	23	23	24	24	23
Std. Deviation	2.83	2.59	2.78	2.64	2.91	2.69	2.74	2.55	2.73	2.45	2.64	2.60
% CO2 < 23	36%	36%	30%	34%	39%	35%	39%	39%	38%	30%	23%	29%



	Jan	Feb	Mar	Apr	May	Jun	Jul	Aug	Sep	Oct	Nov	Dec
# CO2	146	146	145	152	150	147	149	145	146	152	150	153
# CO2 23 to 27	90	85	93	96	86	90	86	86	83	101	105	102
Pop. Mean	23	23	24	23	23	23	23	23	23	24	24	23
Std. Deviation	2.83	2.59	2.78	2.64	2.91	2.69	2.74	2.55	2.73	2.45	2.64	2.60
% CO2 23 to 27	62%	58%	64%	63%	57%	61%	58%	59%	57%	66%	70%	67%



	Jan	Feb	Mar	Apr	May	Jun	Jul	Aug	Sep	Oct	Nov	Dec
# CO2	146	146	145	152	150	147	149	145	146	152	150	153
# CO2 > 27	3	9	9	5	6	6	5	2	7	6	10	6
Pop. Mean	23	23	24	23	23	23	23	23	23	24	24	23
Std. Deviation	2.83	2.59	2.78	2.64	2.91	2.69	2.74	2.55	2.73	2.45	2.64	2.60
% CO2 > 27	2%	6%	6%	3%	4%	4%	3%	1%	5%	4%	7%	4%

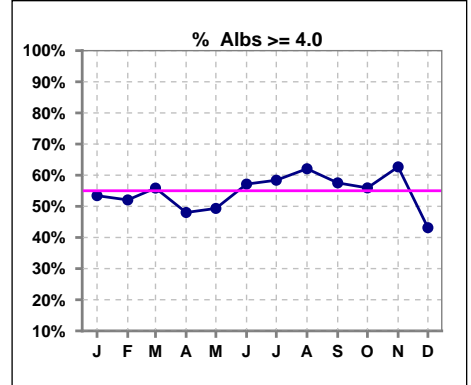


Methodology: a) All labs for 'Adequacy of Dialysis', 'Nutrition', 'Osteodystrophy', 'Anemia' and 'Diabetes' based on last value of month; b) BP's and #L processed are average of all values for month; c) Access data takes last access of month; d) Values for SGA and 'Infection Control' use most recent result.

*Albumin values use BCG method - as of July 2001

II. NUTRITION

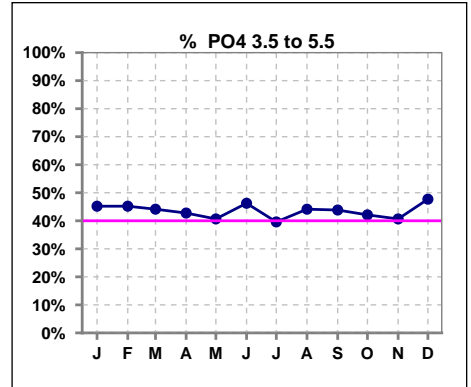
	Jan	Feb	Mar	Apr	May	Jun	Jul	Aug	Sep	Oct	Nov	Dec
# Albumin	146	146	145	152	150	147	149	145	146	152	150	153
# Albumin >= 4.0	78	76	81	73	74	84	87	90	84	85	94	66
Pop. Mean	3.9	3.9	3.9	3.9	3.9	4.0	3.9	4.0	4.0	3.9	4.0	3.8
Std. Deviation	0.38	0.36	0.39	0.38	0.36	0.42	0.39	0.36	0.35	0.36	0.40	0.42
% Alb >= 4.0	53%	52%	56%	48%	49%	57%	58%	62%	58%	56%	63%	43%



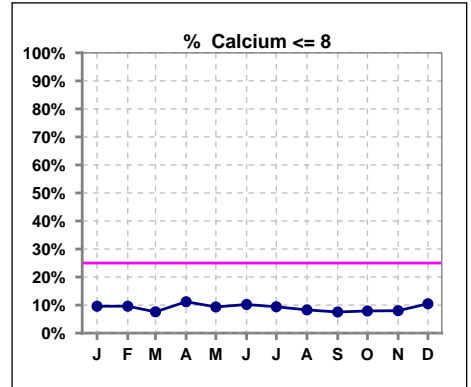
Lab methodology for PTH changed January 2012

III. OSTEODYSTROPHY

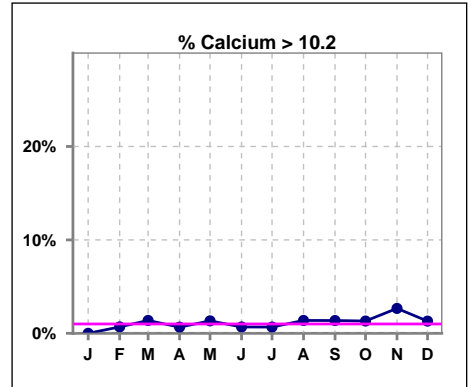
	Jan	Feb	Mar	Apr	May	Jun	Jul	Aug	Sep	Oct	Nov	Dec
# PO4	146	146	145	152	150	147	149	145	146	152	150	153
# PO4 3.5 to 5.5	66	66	64	65	61	68	59	64	64	64	61	73
Pop. Mean	5.8	5.7	5.8	5.6	5.6	5.6	5.8	5.7	5.6	5.5	5.9	5.6
Std. Deviation	2.08	2.10	1.96	1.96	2.03	1.88	1.87	2.07	2.04	1.99	1.99	1.94
% PO4 3.5 to 5.5	45%	45%	44%	43%	41%	46%	40%	44%	44%	42%	41%	48%



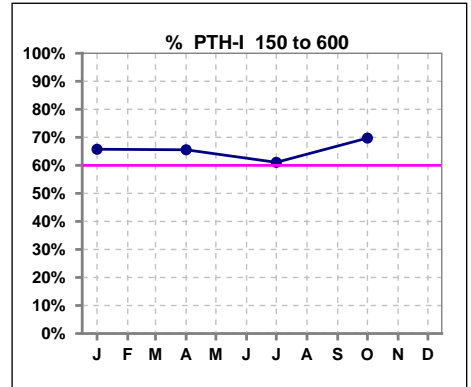
	Jan	Feb	Mar	Apr	May	Jun	Jul	Aug	Sep	Oct	Nov	Dec
# Calcium	146	146	145	152	150	147	149	145	146	152	150	153
# Calcium <= 8	14	14	11	17	14	15	14	12	11	12	12	16
Pop. Mean	9.0	9.0	9.0	9.0	9.0	8.9	9.0	9.1	9.0	9.0	9.2	8.9
Std. Deviation	0.71	0.73	0.73	0.75	0.72	0.70	0.67	0.66	0.73	0.69	0.79	0.72
% Calcium <= 8	10%	10%	8%	11%	9%	10%	9%	8%	8%	8%	8%	10%



	Jan	Feb	Mar	Apr	May	Jun	Jul	Aug	Sep	Oct	Nov	Dec
# Calcium	146	146	145	152	150	147	149	145	146	152	150	153
# Calcium > 10.2	0	1	2	1	2	1	1	2	2	2	4	2
Pop. Mean	9.0	9.0	9.0	9.0	9.0	8.9	9.0	9.1	9.0	9.0	9.2	8.9
Std. Deviation	0.71	0.73	0.73	0.75	0.72	0.70	0.67	0.66	0.73	0.69	0.79	0.72
% Calcium > 10.2	0%	1%	1%	1%	1%	1%	1%	1%	1%	1%	3%	1%



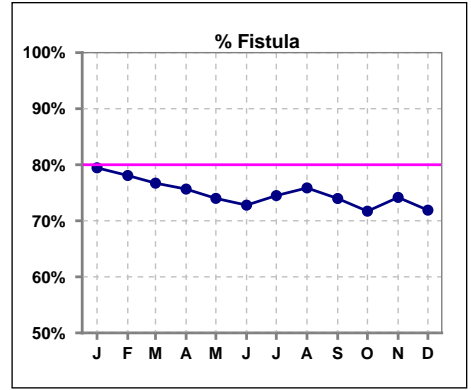
	Jan	Feb	Mar	Apr	May	Jun	Jul	Aug	Sep	Oct	Nov	Dec
# PTH-I	146			151			149			152		
# PTH-I 150 to 600	96			99			91			106		
Pop. Mean	474			499			449			469		
Std. Deviation	499			517			468			484		
% PTH-I 150 to 600	66%			66%			61%			70%		



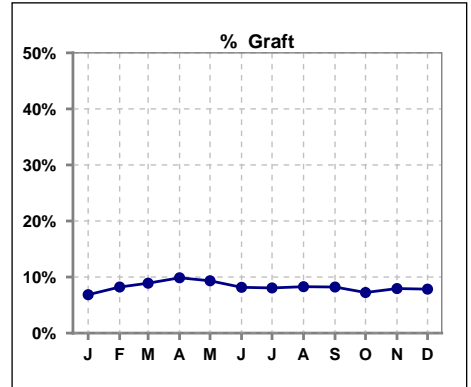
Methodology: a) All labs for 'Adequacy of Dialysis', 'Nutrition', 'Osteodystrophy', 'Anemia' and 'Diabetes' based on last value of month; b) BP's and #L processed are average of all values for month; c) Access data takes last access of month; d) Values for SGA and 'Infection Control' use most recent result.

IV. ACCESS

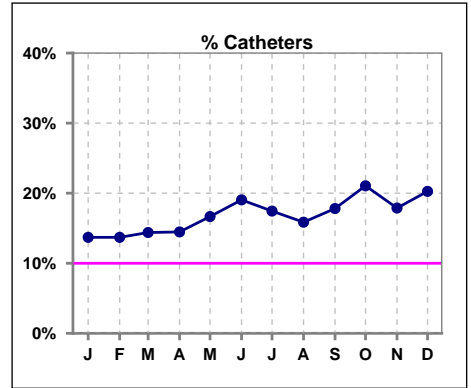
	Jan	Feb	Mar	Apr	May	Jun	Jul	Aug	Sep	Oct	Nov	Dec
# Access	146	146	146	152	150	147	149	145	146	152	151	153
# Fistula	116	114	112	115	111	107	111	110	108	109	112	110
% Fistula	79%	78%	77%	76%	74%	73%	74%	76%	74%	72%	74%	72%



	Jan	Feb	Mar	Apr	May	Jun	Jul	Aug	Sep	Oct	Nov	Dec
# Access	146	146	146	152	150	147	149	145	146	152	151	153
# Graft	10	12	13	15	14	12	12	12	12	11	12	12
% Graft	7%	8%	9%	10%	9%	8%	8%	8%	8%	7%	8%	8%



	Jan	Feb	Mar	Apr	May	Jun	Jul	Aug	Sep	Oct	Nov	Dec
# Access	146	146	146	152	150	147	149	145	146	152	151	153
# Catheters	20	20	21	22	25	28	26	23	26	32	27	31
% Catheters	14%	14%	14%	14%	17%	19%	17%	16%	18%	21%	18%	20%



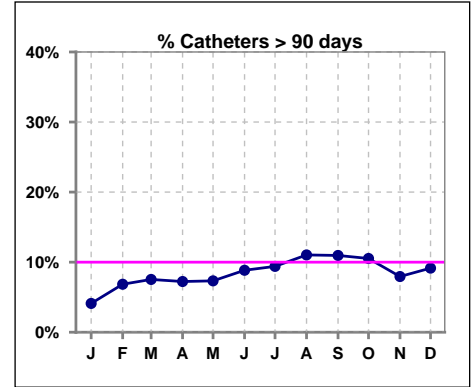
Methodology: a) All labs for 'Adequacy of Dialysis', 'Nutrition', 'Osteodystrophy', 'Anemia' and 'Diabetes' based on last value of month; b) BP's and #L processed are average of all values for month; c) Access data takes last access of month; d) Values for SGA and 'Infection Control' use most recent result.

IV. ACCESS - CONT.

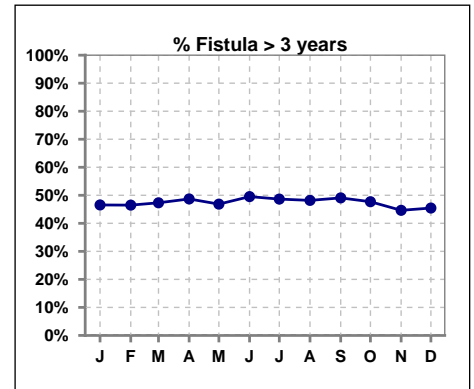
Catheters > 90 days

	Jan	Feb	Mar	Apr	May	Jun	Jul	Aug	Sep	Oct	Nov	Dec
# Access	146	146	146	152	150	147	149	145	146	152	151	153
# Catheters	6	10	11	11	11	13	14	16	16	16	12	14
% Catheters	4%	7%	8%	7%	7%	9%	9%	11%	11%	11%	8%	9%

Definition: Catheter in use on last treatment of the month



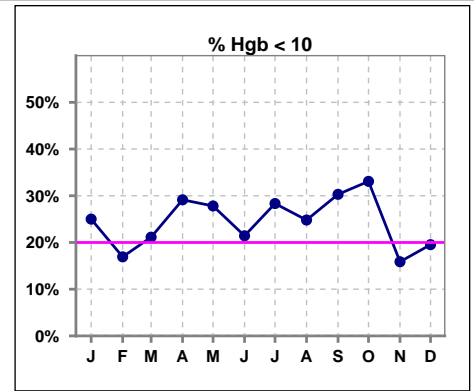
	Jan	Feb	Mar	Apr	May	Jun	Jul	Aug	Sep	Oct	Nov	Dec
# Fistula	116	114	112	115	111	107	111	110	108	109	112	110
# Fistula > 3 yrs	54	53	53	56	52	53	54	53	53	52	50	50
% Fistula > 3 yrs	47%	46%	47%	49%	47%	50%	49%	48%	49%	48%	45%	45%



V. ANEMIA

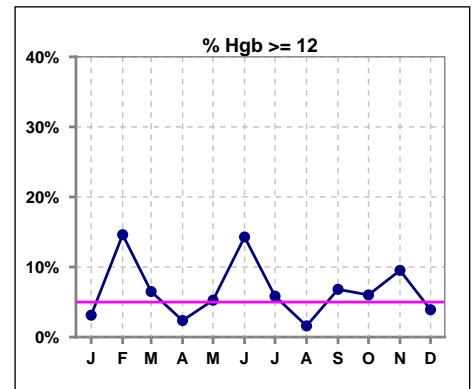
	Jan	Feb	Mar	Apr	May	Jun	Jul	Aug	Sep	Oct	Nov	Dec
# Hgb	128	130	123	127	133	126	120	125	132	133	126	128
# Hgb < 10	32	22	26	37	37	27	34	31	40	44	20	25
Pop. Mean	10.6	10.9	10.7	10.6	10.4	10.8	10.6	10.5	10.4	10.4	10.9	10.7
Std. Deviation	1.2	1.2	1.2	1.1	1.3	1.3	1.3	1.2	1.4	1.3	1.2	1.2
% Hgb < 10	25%	17%	21%	29%	28%	21%	28%	25%	30%	33%	16%	20%

Note: Excludes patients who received no ESA in month.



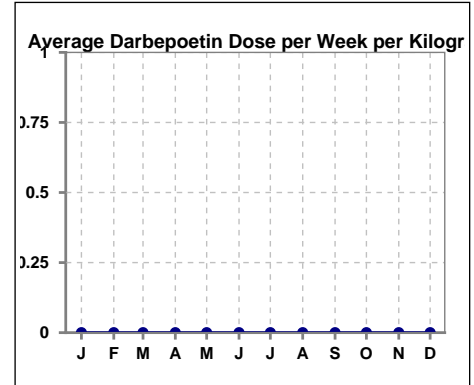
	Jan	Feb	Mar	Apr	May	Jun	Jul	Aug	Sep	Oct	Nov	Dec
# Hgb	128	130	123	127	133	126	120	125	132	133	126	128
# Hgb >= 12	4	19	8	3	7	18	7	2	9	8	12	5
Pop. Mean	10.6	10.9	10.7	10.6	10.4	10.8	10.6	10.5	10.4	10.4	10.9	10.7
Std. Deviation	1.2	1.2	1.2	1.1	1.3	1.3	1.3	1.2	1.4	1.3	1.2	1.2
% Hgb >= 12	3%	15%	7%	2%	5%	14%	6%	2%	7%	6%	10%	4%

Note: Excludes patients who received no ESA in month.



Average Darbepoetin Dose per Week per Kilogram

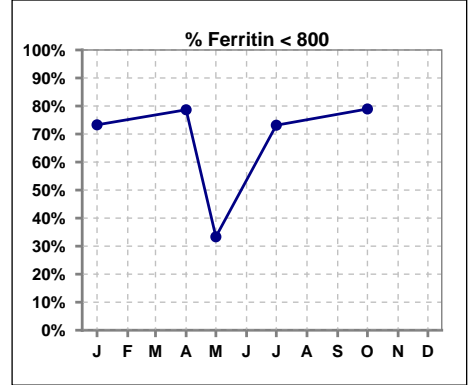
	Jan	Feb	Mar	Apr	May	Jun	Jul	Aug	Sep	Oct	Nov	Dec
# Average Darbepoetin	0	0	0	0	0	0	0	0	0	0	0	0



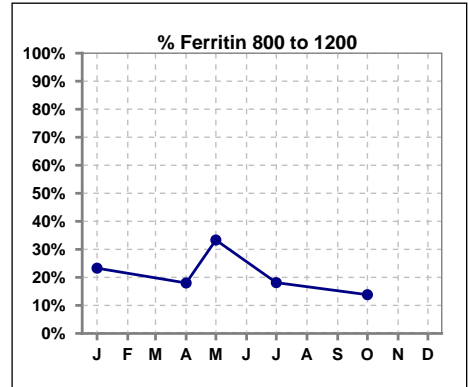
V. ANEMIA - CONT.

Iron Profile

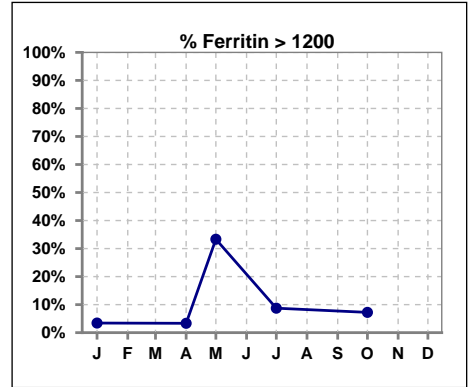
	Jan	Feb	Mar	Apr	May	Jun	Jul	Aug	Sep	Oct	Nov	Dec
# Ferritin	146			150	6		149			152		
# Ferritin < 800	107			118	2		109			120		
Pop. Mean	552			536	974		574			574		
Std. Deviation	348			336	415		404			420		
% Ferritin < 800	73%			79%	33%		73%			79%		



	Jan	Feb	Mar	Apr	May	Jun	Jul	Aug	Sep	Oct	Nov	Dec
# Ferritin	146			150	6		149			152		
# Ferritin 800 to 1200	34			27	2		27			21		
Pop. Mean	552			536	974		574			574		
Std. Deviation	348			336	415		404			420		
% Ferritin 800 to 1200	23%			18%	33%		18%			14%		



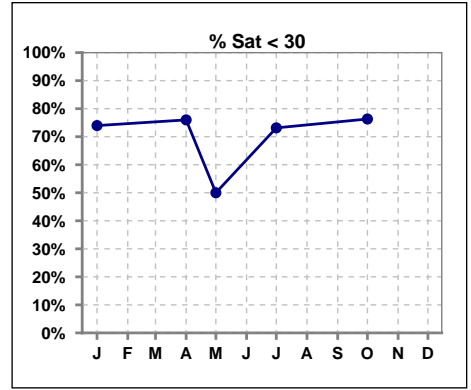
	Jan	Feb	Mar	Apr	May	Jun	Jul	Aug	Sep	Oct	Nov	Dec
# Ferritin	146			150	6		149			152		
# Ferritin > 1200	5			5	2		13			11		
Pop. Mean	552			536	974		574			574		
Std. Deviation	348			336	415		404			420		
% Ferritin > 1200	3%			3%	33%		9%			7%		



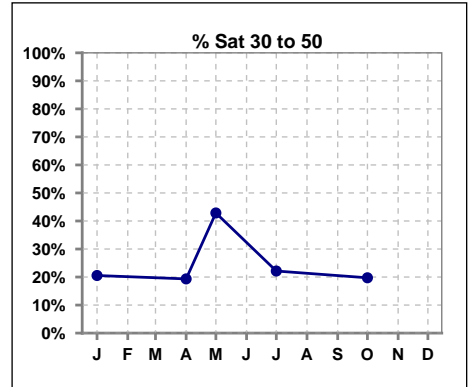
Methodology: a) All labs for 'Adequacy of Dialysis', 'Nutrition', 'Osteodystrophy', 'Anemia' and 'Diabetes' based on last value of month; b) BP's and #L processed are average of all values for month; c) Access data takes last access of month; d) Values for SGA and 'Infection Control' use most recent result.

V. ANEMIA - CONT.

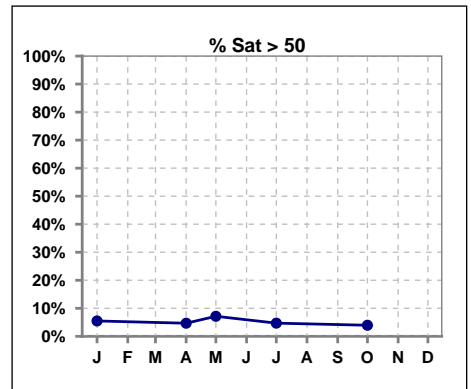
	Jan	Feb	Mar	Apr	May	Jun	Jul	Aug	Sep	Oct	Nov	Dec
# % Sat	146			150	14		149			152		
# % Sat < 30	108			114	7		109			116		
Pop. Mean	25			25	27		24			25		
Std. Deviation	13			13	16		12			14		
% % Sat < 30	74%			76%	50%		73%			76%		



	Jan	Feb	Mar	Apr	May	Jun	Jul	Aug	Sep	Oct	Nov	Dec
# % Sat	146			150	14		149			152		
# % Sat 30 to 50	30			29	6		33			30		
Pop. Mean	25			25	27		24			25		
Std. Deviation	13			13	16		12			14		
% % Sat 30 to 50	21%			19%	43%		22%			20%		

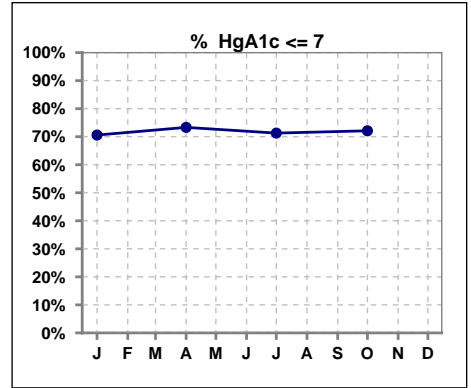


	Jan	Feb	Mar	Apr	May	Jun	Jul	Aug	Sep	Oct	Nov	Dec
# % Sat	146			150	14		149			152		
# % Sat > 50	8			7	1		7			6		
Pop. Mean	25			25	27		24			25		
Std. Deviation	13			13	16		12			14		
% % Sat > 50	5%			5%	7%		5%			4%		



VI. Diabetes

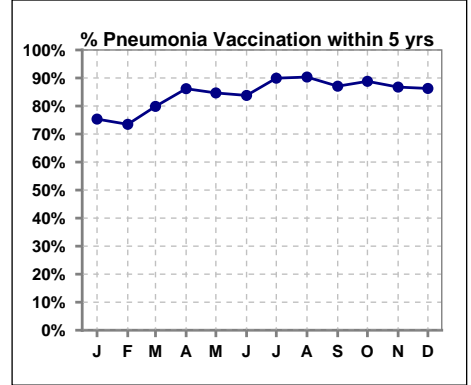
	Jan	Feb	Mar	Apr	May	Jun	Jul	Aug	Sep	Oct	Nov	Dec
# HgA1c	102			105			101			104		
# HgA1c <= 7	72			77			72			75		
Pop. Mean	6.5			6.5			6.5			6.3		
Std. Deviation	1.44			1.51			1.53			1.28		
% HgA1c <= 7	71%			73%			71%			72%		



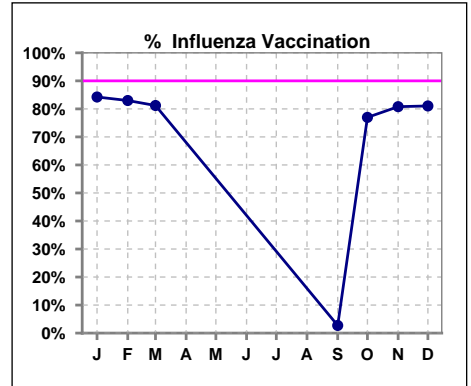
VII. Infection Control

Pneumonia vaccination within the past five years

	Jan	Feb	Mar	Apr	May	Jun	Jul	Aug	Sep	Oct	Nov	Dec
# Patient	146	147	149	152	150	148	149	145	147	152	151	153
# Pneumonia	110	108	119	131	127	124	134	131	128	135	131	132
% Pneumonia	75%	73%	80%	86%	85%	84%	90%	90%	87%	89%	87%	86%



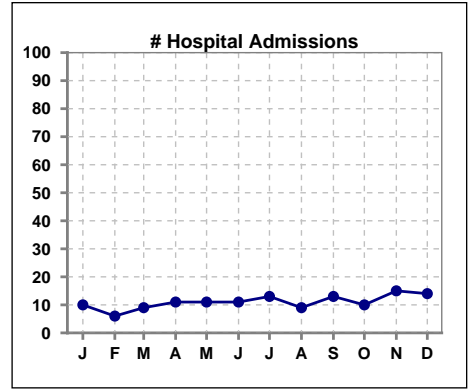
	Jan	Feb	Mar	Apr	May	Jun	Jul	Aug	Sep	Oct	Nov	Dec
# Patient	146	147	149						147	152	151	153
# Influenza	123	122	121						4	117	122	124
% Influenza	84%	83%	81%						3%	77%	81%	81%



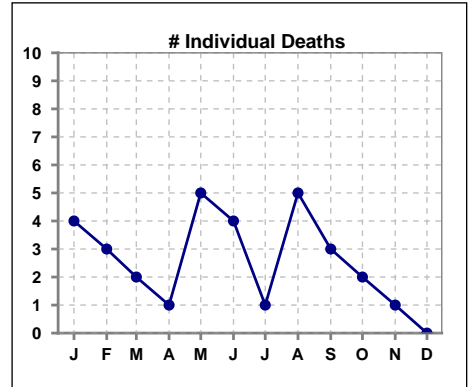
Methodology: a) All labs for 'Adequacy of Dialysis', 'Nutrition', 'Osteodystrophy', 'Anemia' and 'Diabetes' based on last value of month; b) BP's and #L processed are average of all values for month; c) Access data takes last access of month; d) Values for SGA and 'Infection Control' use most recent result.

VIII. Outcome measures

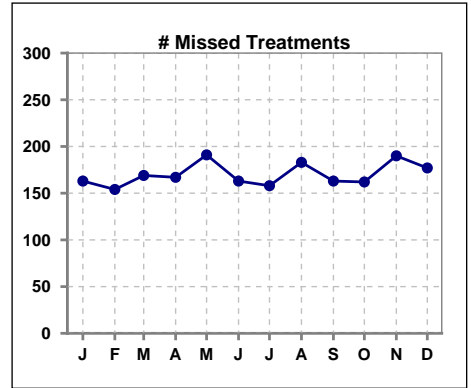
	Jan	Feb	Mar	Apr	May	Jun	Jul	Aug	Sep	Oct	Nov	Dec
# Patient	146	147	149	152	150	148	149	145	147	152	151	153
# Hospital Admissions	10	6	9	11	11	11	13	9	13	10	15	14



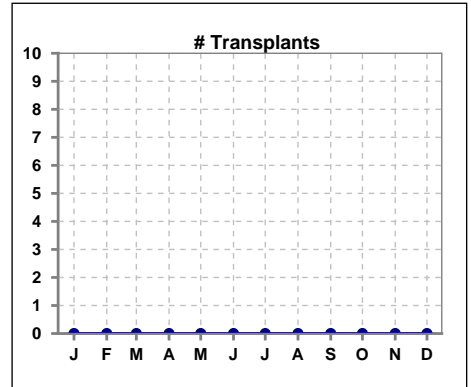
	Jan	Feb	Mar	Apr	May	Jun	Jul	Aug	Sep	Oct	Nov	Dec
# Patient	146	147	149	152	150	148	149	145	147	152	151	153
# Individual Deaths	4	3	2	1	5	4	1	5	3	2	1	0



	Jan	Feb	Mar	Apr	May	Jun	Jul	Aug	Sep	Oct	Nov	Dec
# Patient	146	147	149	152	150	148	149	145	147	152	151	153
# Missed Treatments	163	154	169	167	191	163	158	183	163	162	190	177



	Jan	Feb	Mar	Apr	May	Jun	Jul	Aug	Sep	Oct	Nov	Dec
# Patient	146	147	149	152	150	148	149	145	147	152	151	153
# Transplants	0	0	0	0	0	0	0	0	0	0	0	0



Methodology: a) All labs for 'Adequacy of Dialysis', 'Nutrition', 'Osteodystrophy', 'Anemia' and 'Diabetes' based on last value of month; b) BP's and #L processed are average of all values for month; c) Access data takes last access of month; d) Values for SGA and 'Infection Control' use most recent result.