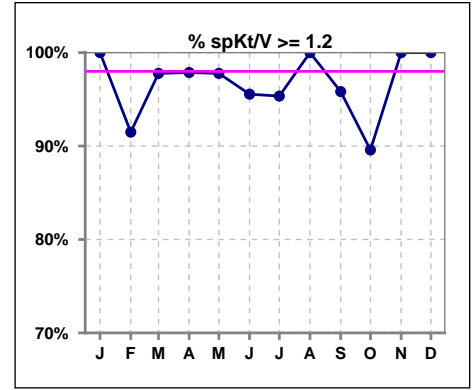
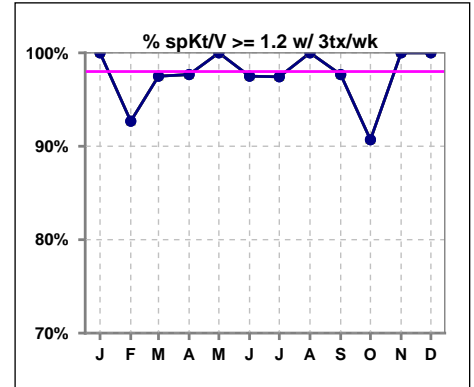


I. ADEQUACY OF DIALYSIS

	Jan	Feb	Mar	Apr	May	Jun	Jul	Aug	Sep	Oct	Nov	Dec
# spKt/V	43	47	45	47	45	45	43	50	48	48	47	47
# spKt/V >= 1.2	43	43	44	46	44	43	41	50	46	43	47	47
Pop. Mean	1.57	1.57	1.57	1.62	1.59	1.58	1.62	1.58	1.64	1.60	1.63	1.68
Std. Deviation	0.32	0.36	0.37	0.35	0.36	0.33	0.35	0.32	0.38	0.38	0.36	0.38
% spKt/V >= 1.2	100%	91%	98%	98%	98%	96%	95%	100%	96%	90%	100%	100%



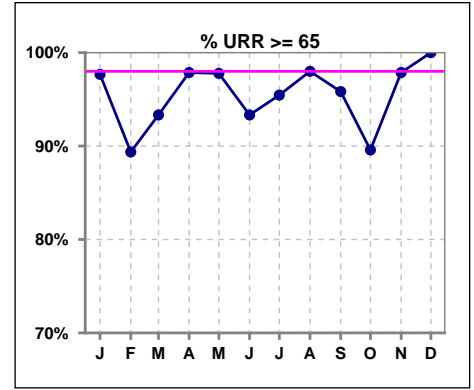
	Jan	Feb	Mar	Apr	May	Jun	Jul	Aug	Sep	Oct	Nov	Dec
# spKt/V w/ 3tx/wk	39	41	40	43	41	40	39	43	43	43	42	42
# spKt/V >= 1.2 w/3tx/wk	39	38	39	42	41	39	38	43	42	39	42	42
Pop. Mean	1.58	1.61	1.59	1.62	1.61	1.61	1.65	1.58	1.66	1.62	1.65	1.71
Std. Deviation	0.32	0.36	0.38	0.35	0.36	0.34	0.34	0.28	0.40	0.39	0.36	0.39
% >= 1.2 w/3tx/wk	100%	93%	98%	98%	100%	98%	97%	100%	98%	91%	100%	100%



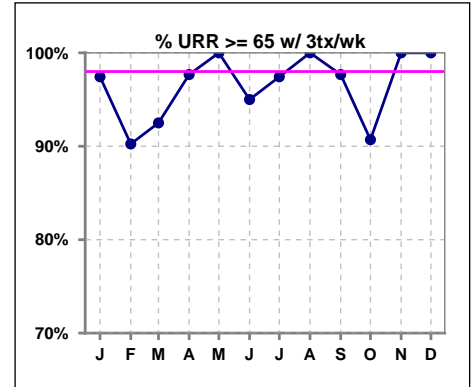
Methodology: a) All labs for 'Adequacy of Dialysis', 'Nutrition', 'Osteodystrophy', 'Anemia' and 'Diabetes' based on last value of month; b) BP's and #L processed are average of all values for month; c) Access data takes last access of month; d) Values for SGA and 'Infection Control' use most recent result.

I. ADEQUACY OF DIALYSIS - CONT.

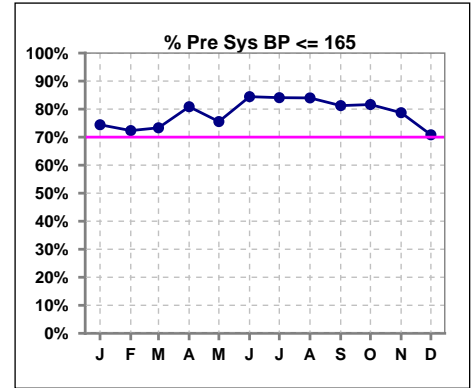
	Jan	Feb	Mar	Apr	May	Jun	Jul	Aug	Sep	Oct	Nov	Dec
# URR	43	47	45	47	45	45	44	50	48	48	47	47
# URR >= 65	42	42	42	46	44	42	42	49	46	43	46	47
Pop. Mean	73	73	73	74	74	74	75	74	75	74	75	76
Std. Deviation	6.45	7.31	6.89	6.77	7.11	6.74	7.00	6.05	7.03	7.55	6.85	6.27
% URR >= 65	98%	89%	93%	98%	98%	93%	95%	98%	96%	90%	98%	100%



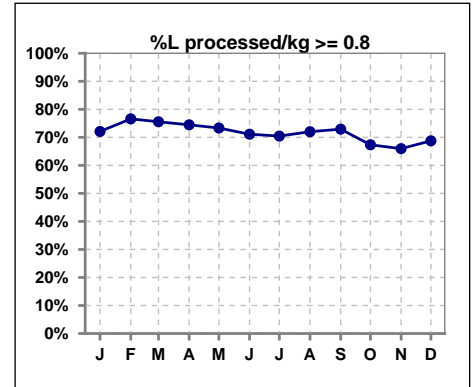
	Jan	Feb	Mar	Apr	May	Jun	Jul	Aug	Sep	Oct	Nov	Dec
# URR w/ 3tx/wk	39	41	40	43	41	40	39	43	43	43	42	42
# URR>=65 w/ 3tx/wk	38	37	37	42	41	38	38	43	42	39	42	42
Pop. Mean	74	74	73	74	74	74	75	74	75	74	75	76
Std. Deviation	6.43	7.25	7.13	6.73	6.67	6.58	6.49	5.56	7.09	7.53	6.70	6.48
% URR>=65 w/ 3tx/wk	97%	90%	93%	98%	100%	95%	97%	100%	98%	91%	100%	100%



	Jan	Feb	Mar	Apr	May	Jun	Jul	Aug	Sep	Oct	Nov	Dec
# Pre Sys BP	43	47	45	47	45	45	44	50	48	49	47	48
# Pre Sys BP <= 165	32	34	33	39	36	38	37	42	40	40	38	34
Pop. Mean	151	151	153	148	147	146	143	145	147	147	149	149
Std. Deviation	18.9	20.0	21.1	19.9	19.3	21.8	22.6	22.1	20.1	20.5	18.5	20.6
% Pre Sys BP <=165	74%	72%	73%	81%	76%	84%	84%	84%	81%	82%	79%	71%



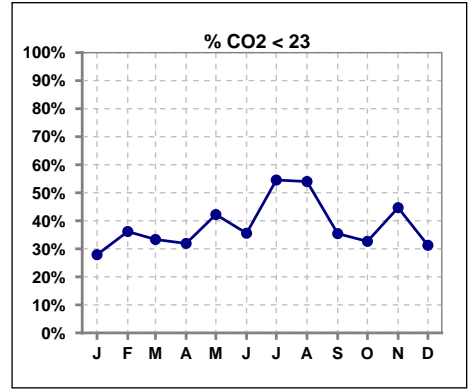
	Jan	Feb	Mar	Apr	May	Jun	Jul	Aug	Sep	Oct	Nov	Dec
# L processed/kg	43	47	45	47	45	45	44	50	48	49	47	48
# L processed/kg>=0.8	31	36	34	35	33	32	31	36	35	33	31	33
Pop. Mean	1	1	1	1	1	1	1	1	1	1	1	1
Std. Deviation	0.3	0.3	0.3	0.3	0.3	0.3	0.3	0.3	0.4	0.3	0.3	0.3
% L processed/kg>=0.8	72%	77%	76%	74%	73%	71%	70%	72%	73%	67%	66%	69%



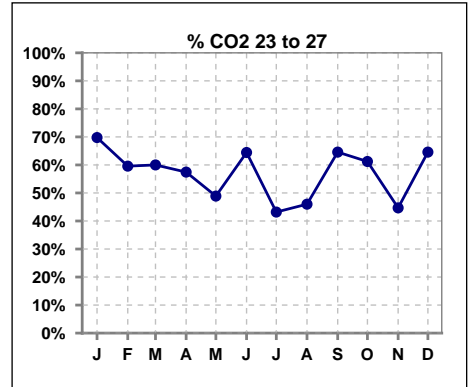
Methodology: a) All labs for 'Adequacy of Dialysis', 'Nutrition', 'Osteodystrophy', 'Anemia' and 'Diabetes' based on last value of month; b) BP's and #L processed are average of all values for month; c) Access data takes last access of month; d) Values for SGA and 'Infection Control' use most recent result.

I. ADEQUACY OF DIALYSIS - CONT.

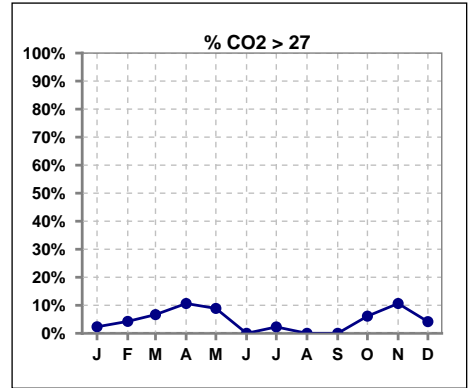
	Jan	Feb	Mar	Apr	May	Jun	Jul	Aug	Sep	Oct	Nov	Dec
# CO2	43	47	45	47	45	45	44	50	48	49	47	48
# CO2 < 23	12	17	15	15	19	16	24	27	17	16	21	15
Pop. Mean	24	23	24	24	23	23	22	22	23	23	23	24
Std. Deviation	2.64	2.65	3.39	3.54	4.15	2.35	3.08	3.43	2.50	3.07	3.39	2.61
% CO2 < 23	28%	36%	33%	32%	42%	36%	55%	54%	35%	33%	45%	31%



	Jan	Feb	Mar	Apr	May	Jun	Jul	Aug	Sep	Oct	Nov	Dec
# CO2	43	47	45	47	45	45	44	50	48	49	47	48
# CO2 23 to 27	30	28	27	27	22	29	19	23	31	30	21	31
Pop. Mean	24	23	24	24	23	23	22	22	23	23	23	24
Std. Deviation	2.64	2.65	3.39	3.54	4.15	2.35	3.08	3.43	2.50	3.07	3.39	2.61
% CO2 23 to 27	70%	60%	60%	57%	49%	64%	43%	46%	65%	61%	45%	65%



	Jan	Feb	Mar	Apr	May	Jun	Jul	Aug	Sep	Oct	Nov	Dec
# CO2	43	47	45	47	45	45	44	50	48	49	47	48
# CO2 > 27	1	2	3	5	4	0	1	0	0	3	5	2
Pop. Mean	24	23	24	24	23	23	22	22	23	23	23	24
Std. Deviation	2.64	2.65	3.39	3.54	4.15	2.35	3.08	3.43	2.50	3.07	3.39	2.61
% CO2 > 27	2%	4%	7%	11%	9%	0%	2%	0%	0%	6%	11%	4%

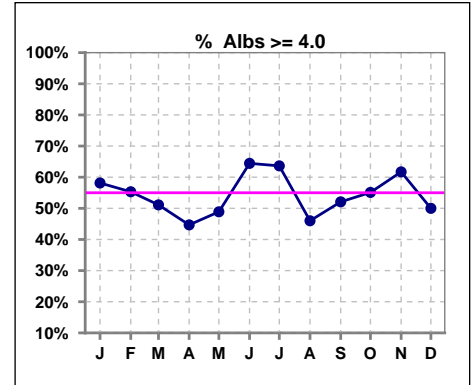


Methodology: a) All labs for 'Adequacy of Dialysis', 'Nutrition', 'Osteodystrophy', 'Anemia' and 'Diabetes' based on last value of month; b) BP's and #L processed are average of all values for month; c) Access data takes last access of month; d) Values for SGA and 'Infection Control' use most recent result.

*Albumin values use BCG method - as of July 2001

II. NUTRITION

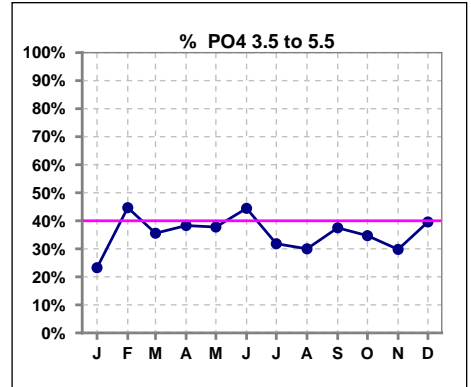
	Jan	Feb	Mar	Apr	May	Jun	Jul	Aug	Sep	Oct	Nov	Dec
# Albumin	43	47	45	47	45	45	44	50	48	49	47	48
# Albumin >= 4.0	25	26	23	21	22	29	28	23	25	27	29	24
Pop. Mean	3.9	3.9	3.9	3.8	3.9	4.0	4.0	3.8	3.9	3.9	4.0	3.9
Std. Deviation	0.36	0.40	0.37	0.39	0.35	0.38	0.32	0.56	0.38	0.41	0.35	0.35
% Alb >= 4.0	58%	55%	51%	45%	49%	64%	64%	46%	52%	55%	62%	50%



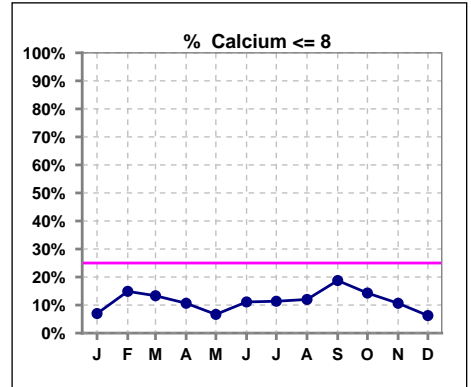
Lab methodology for PTH changed January 2012

III. OSTEODYSTROPHY

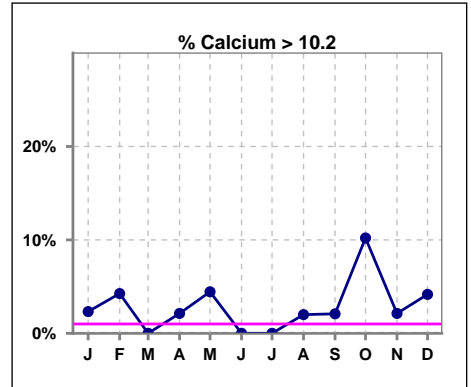
	Jan	Feb	Mar	Apr	May	Jun	Jul	Aug	Sep	Oct	Nov	Dec
# PO4	43	47	45	47	45	45	44	50	48	49	47	48
# PO4 3.5 to 5.5	10	21	16	18	17	20	14	15	18	17	14	19
Pop. Mean	6.5	5.7	6.2	6.1	6.1	6.4	6.3	5.9	6.3	6.5	6.2	5.9
Std. Deviation	1.95	1.69	1.77	1.73	1.78	1.86	1.73	2.16	1.77	2.04	2.29	1.98
% PO4 3.5 to 5.5	23%	45%	36%	38%	38%	44%	32%	30%	38%	35%	30%	40%



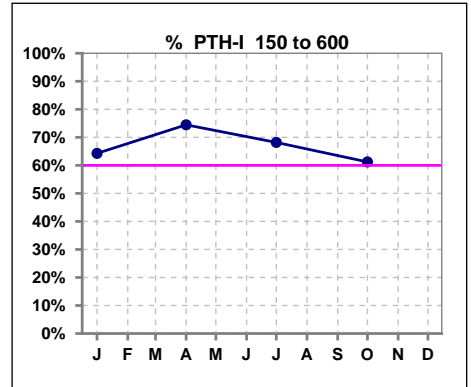
	Jan	Feb	Mar	Apr	May	Jun	Jul	Aug	Sep	Oct	Nov	Dec
# Calcium	43	47	45	47	45	45	44	50	48	49	47	48
# Calcium <= 8	3	7	6	5	3	5	5	6	9	7	5	3
Pop. Mean	9.0	9.0	9.0	9.1	9.2	8.9	9.0	8.9	8.9	9.1	9.1	9.0
Std. Deviation	0.67	0.77	0.74	0.79	0.73	0.73	0.69	0.73	0.82	0.87	0.76	0.72
% Calcium <= 8	7%	15%	13%	11%	7%	11%	11%	12%	19%	14%	11%	6%



	Jan	Feb	Mar	Apr	May	Jun	Jul	Aug	Sep	Oct	Nov	Dec
# Calcium	43	47	45	47	45	45	44	50	48	49	47	48
# Calcium > 10.2	1	2	0	1	2	0	0	1	1	5	1	2
Pop. Mean	9.0	9.0	9.0	9.1	9.2	8.9	9.0	8.9	8.9	9.1	9.1	9.0
Std. Deviation	0.67	0.77	0.74	0.79	0.73	0.73	0.69	0.73	0.82	0.87	0.76	0.72
% Calcium > 10.2	2%	4%	0%	2%	4%	0%	0%	2%	2%	10%	2%	4%



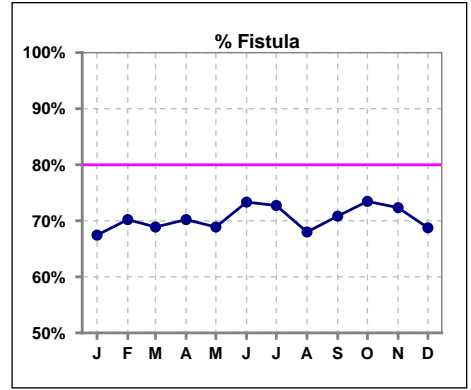
	Jan	Feb	Mar	Apr	May	Jun	Jul	Aug	Sep	Oct	Nov	Dec
# PTH-I	42			47			44			49		
# PTH-I 150 to 600	27			35			30			30		
Pop. Mean	555			481			539			535		
Std. Deviation	391			400			399			384		
% PTH-I 150 to 600	64%			74%			68%			61%		



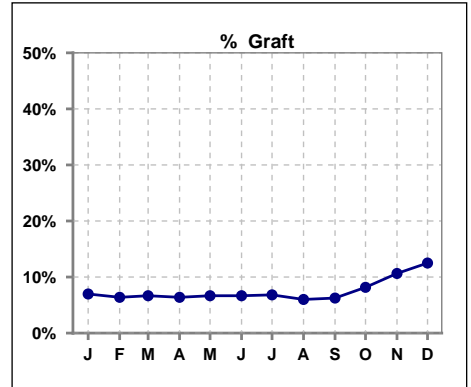
Methodology: a) All labs for 'Adequacy of Dialysis', 'Nutrition', 'Osteodystrophy', 'Anemia' and 'Diabetes' based on last value of month; b) BP's and #L processed are average of all values for month; c) Access data takes last access of month; d) Values for SGA and 'Infection Control' use most recent result.

IV. ACCESS

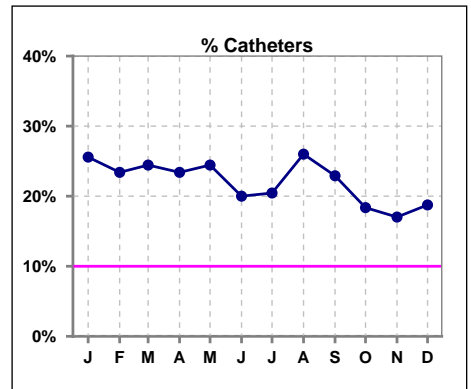
	Jan	Feb	Mar	Apr	May	Jun	Jul	Aug	Sep	Oct	Nov	Dec
# Access	43	47	45	47	45	45	44	50	48	49	47	48
# Fistula	29	33	31	33	31	33	32	34	34	36	34	33
% Fistula	67%	70%	69%	70%	69%	73%	73%	68%	71%	73%	72%	69%



	Jan	Feb	Mar	Apr	May	Jun	Jul	Aug	Sep	Oct	Nov	Dec
# Access	43	47	45	47	45	45	44	50	48	49	47	48
# Graft	3	3	3	3	3	3	3	3	3	4	5	6
% Graft	7%	6%	7%	6%	7%	7%	7%	6%	6%	8%	11%	13%



	Jan	Feb	Mar	Apr	May	Jun	Jul	Aug	Sep	Oct	Nov	Dec
# Access	43	47	45	47	45	45	44	50	48	49	47	48
# Catheters	11	11	11	11	11	9	9	13	11	9	8	9
% Catheters	26%	23%	24%	23%	24%	20%	20%	26%	23%	18%	17%	19%



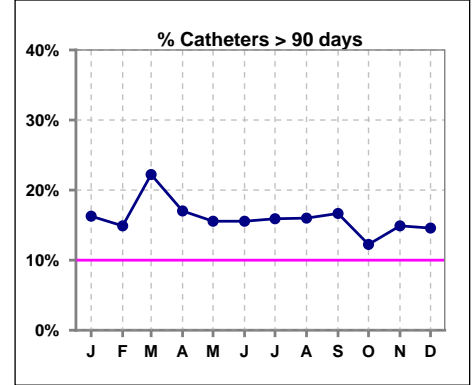
Methodology: a) All labs for 'Adequacy of Dialysis', 'Nutrition', 'Osteodystrophy', 'Anemia' and 'Diabetes' based on last value of month; b) BP's and #L processed are average of all values for month; c) Access data takes last access of month; d) Values for SGA and 'Infection Control' use most recent result.

IV. ACCESS - CONT.

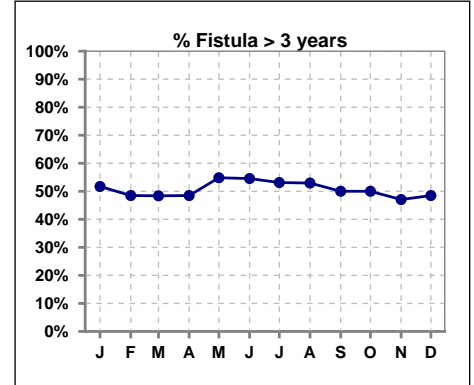
Catheters > 90 days

	Jan	Feb	Mar	Apr	May	Jun	Jul	Aug	Sep	Oct	Nov	Dec
# Access	43	47	45	47	45	45	44	50	48	49	47	48
# Catheters	7	7	10	8	7	7	7	8	8	6	7	7
% Catheters	16%	15%	22%	17%	16%	16%	16%	16%	17%	12%	15%	15%

Definition: Catheter in use on last treatment of the month



	Jan	Feb	Mar	Apr	May	Jun	Jul	Aug	Sep	Oct	Nov	Dec
# Fistula	29	33	31	33	31	33	32	34	34	36	34	33
# Fistula > 3 yrs	15	16	15	16	17	18	17	18	17	18	16	16
% Fistula > 3 yrs	52%	48%	48%	48%	55%	55%	53%	53%	50%	50%	47%	48%

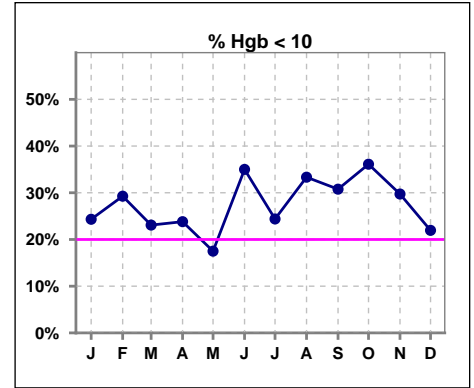


Methodology: a) All labs for 'Adequacy of Dialysis', 'Nutrition', 'Osteodystrophy', 'Anemia' and 'Diabetes' based on last value of month; b) BP's and #L processed are average of all values for month; c) Access data takes last access of month; d) Values for SGA and 'Infection Control' use most recent result.

V. ANEMIA

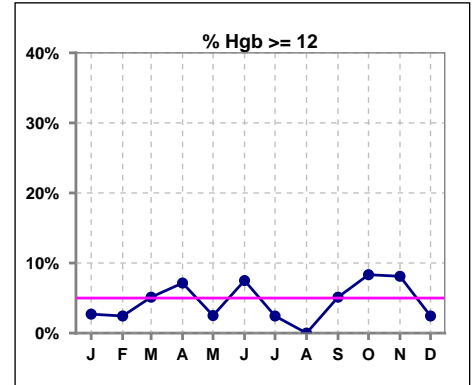
	Jan	Feb	Mar	Apr	May	Jun	Jul	Aug	Sep	Oct	Nov	Dec
# Hgb	37	41	39	42	40	40	41	39	39	36	37	41
# Hgb < 10	9	12	9	10	7	14	10	13	12	13	11	9
Pop. Mean	10.5	10.5	10.7	10.6	10.6	10.4	10.5	10.5	10.6	10.5	10.5	10.6
Std. Deviation	1.1	1.2	1.1	1.2	0.8	1.1	1.1	1.0	1.0	1.2	1.2	1.1
% Hgb < 10	24%	29%	23%	24%	18%	35%	24%	33%	31%	36%	30%	22%

Note: Excludes patients who received no ESA in month.



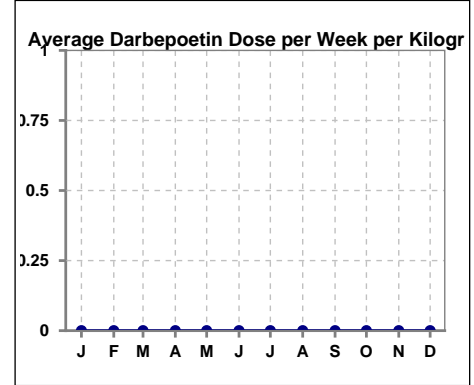
	Jan	Feb	Mar	Apr	May	Jun	Jul	Aug	Sep	Oct	Nov	Dec
# Hgb	37	41	39	42	40	40	41	39	39	36	37	41
# Hgb >= 12	1	1	2	3	1	3	1	0	2	3	3	1
Pop. Mean	10.5	10.5	10.7	10.6	10.6	10.4	10.5	10.5	10.6	10.5	10.5	10.6
Std. Deviation	1.1	1.2	1.1	1.2	0.8	1.1	1.1	1.0	1.0	1.2	1.2	1.1
% Hgb >= 12	3%	2%	5%	7%	3%	8%	2%	0%	5%	8%	8%	2%

Note: Excludes patients who received no ESA in month.



Average Darbepoetin Dose per Week per Kilogram

	Jan	Feb	Mar	Apr	May	Jun	Jul	Aug	Sep	Oct	Nov	Dec
# Average Darbepoetin	0	0	0	0	0	0	0	0	0	0	0	0

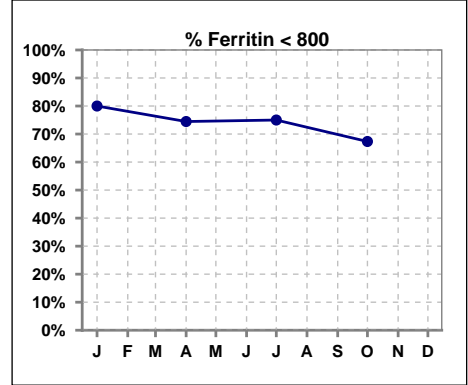


Methodology: a) All labs for 'Adequacy of Dialysis', 'Nutrition', 'Osteodystrophy', 'Anemia' and 'Diabetes' based on last value of month; b) BP's and #L processed are average of all values for month; c) Access data takes last access of month; d) Values for SGA and 'Infection Control' use most recent result.

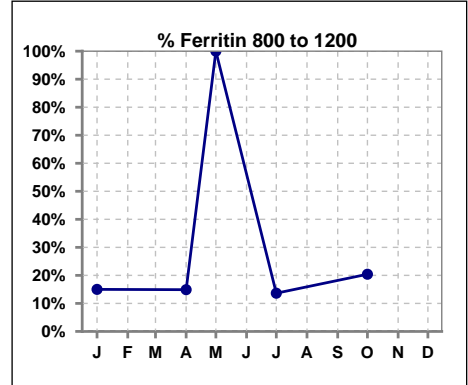
V. ANEMIA - CONT.

Iron Profile

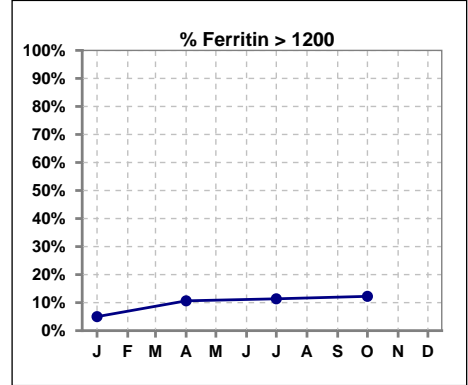
	Jan	Feb	Mar	Apr	May	Jun	Jul	Aug	Sep	Oct	Nov	Dec
# Ferritin	40			47	2		44			49		
# Ferritin < 800	32			35			33			33		
Pop. Mean	541			596	921		632			646		
Std. Deviation	337			365	52		363			437		
% Ferritin < 800	80%			74%			75%			67%		



	Jan	Feb	Mar	Apr	May	Jun	Jul	Aug	Sep	Oct	Nov	Dec
# Ferritin	40			47	2		44			49		
# Ferritin 800 to 1200	6			7	2		6			10		
Pop. Mean	541			596	921		632			646		
Std. Deviation	337			365	52		363			437		
% Ferritin 800 to 1200	15%			15%	100%		14%			20%		



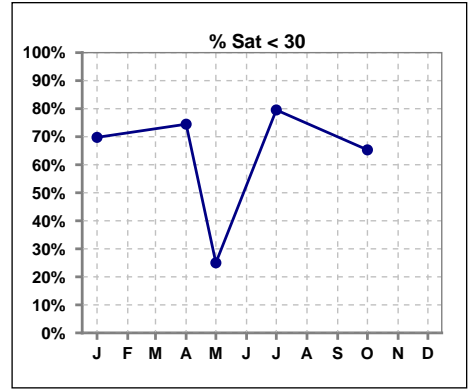
	Jan	Feb	Mar	Apr	May	Jun	Jul	Aug	Sep	Oct	Nov	Dec
# Ferritin	40			47	2		44			49		
# Ferritin > 1200	2			5			5			6		
Pop. Mean	541			596	921		632			646		
Std. Deviation	337			365	52		363			437		
% Ferritin > 1200	5%			11%			11%			12%		



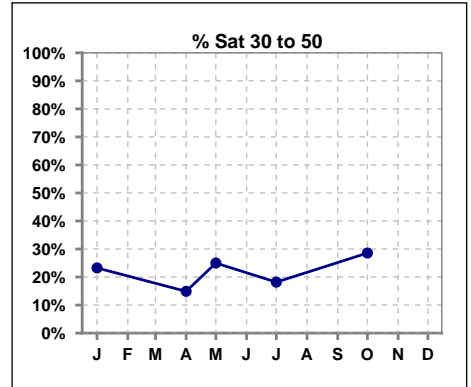
Methodology: a) All labs for 'Adequacy of Dialysis', 'Nutrition', 'Osteodystrophy', 'Anemia' and 'Diabetes' based on last value of month; b) BP's and #L processed are average of all values for month; c) Access data takes last access of month; d) Values for SGA and 'Infection Control' use most recent result.

V. ANEMIA - CONT.

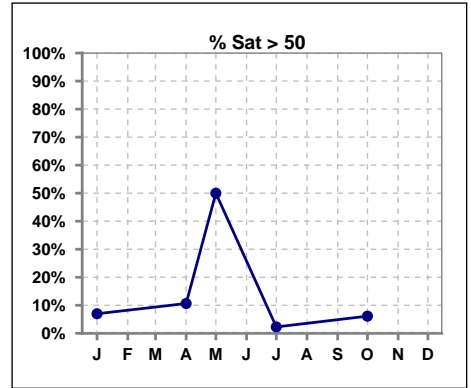
	Jan	Feb	Mar	Apr	May	Jun	Jul	Aug	Sep	Oct	Nov	Dec
# % Sat	43			47	4		44			49		
# % Sat < 30	30			35	1		35			32		
Pop. Mean	27			28	49		26			28		
Std. Deviation	15			18	26		11			15		
% % Sat < 30	70%			74%	25%		80%			65%		



	Jan	Feb	Mar	Apr	May	Jun	Jul	Aug	Sep	Oct	Nov	Dec
# % Sat	43			47	4		44			49		
# % Sat 30 to 50	10			7	1		8			14		
Pop. Mean	27			28	49		26			28		
Std. Deviation	15			18	26		11			15		
% % Sat 30 to 50	23%			15%	25%		18%			29%		

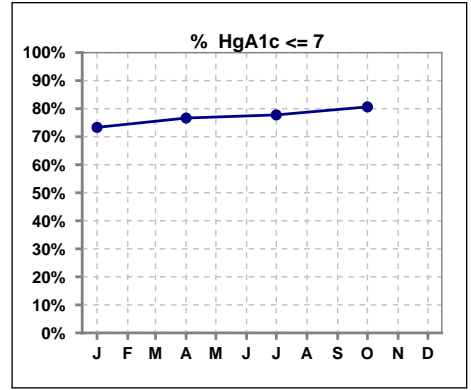


	Jan	Feb	Mar	Apr	May	Jun	Jul	Aug	Sep	Oct	Nov	Dec
# % Sat	43			47	4		44			49		
# % Sat > 50	3			5	2		1			3		
Pop. Mean	27			28	49		26			28		
Std. Deviation	15			18	26		11			15		
% % Sat > 50	7%			11%	50%		2%			6%		



VI. Diabetes

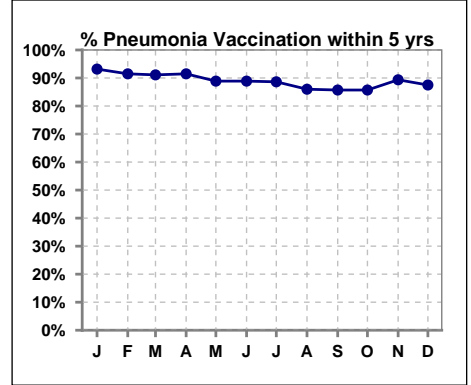
	Jan	Feb	Mar	Apr	May	Jun	Jul	Aug	Sep	Oct	Nov	Dec
# HgA1c	30			30			27			31		
# HgA1c <= 7	22			23			21			25		
Pop. Mean	6.6			6.5			6.5			6.4		
Std. Deviation	2.23			2.17			1.96			1.90		
% HgA1c <= 7	73%			77%			78%			81%		



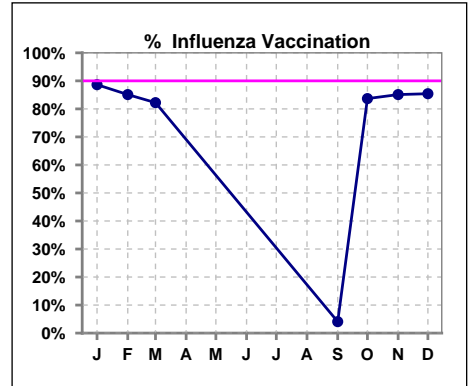
VII. Infection Control

Pneumonia vaccination within the past five years

	Jan	Feb	Mar	Apr	May	Jun	Jul	Aug	Sep	Oct	Nov	Dec
# Patient	44	47	45	47	45	45	44	50	49	49	47	48
# Pneumonia	41	43	41	43	40	40	39	43	42	42	42	42
% Pneumonia	93%	91%	91%	91%	89%	89%	89%	86%	86%	86%	89%	88%



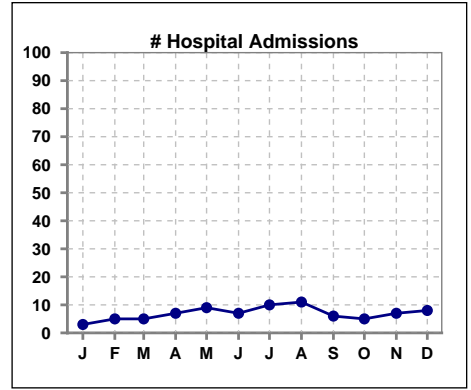
	Jan	Feb	Mar	Apr	May	Jun	Jul	Aug	Sep	Oct	Nov	Dec
# Patient	44	47	45						49	49	47	48
# Influenza	39	40	37						2	41	40	41
% Influenza	89%	85%	82%						4%	84%	85%	85%



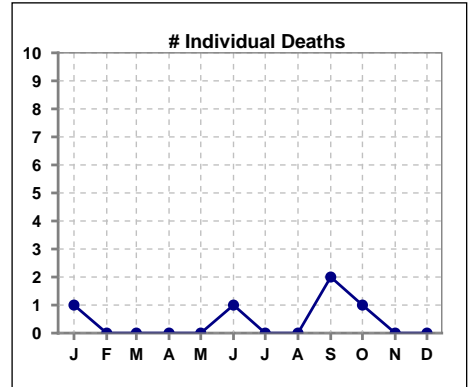
Methodology: a) All labs for 'Adequacy of Dialysis', 'Nutrition', 'Osteodystrophy', 'Anemia' and 'Diabetes' based on last value of month; b) BP's and #L processed are average of all values for month; c) Access data takes last access of month; d) Values for SGA and 'Infection Control' use most recent result.

VIII. Outcome measures

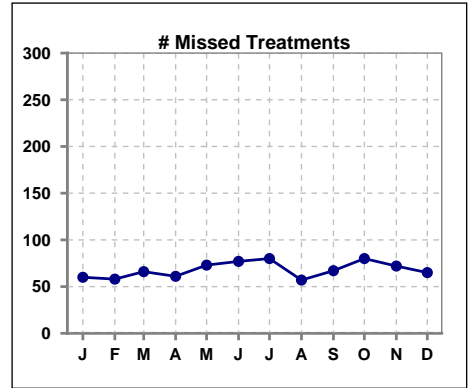
	Jan	Feb	Mar	Apr	May	Jun	Jul	Aug	Sep	Oct	Nov	Dec
# Patient	44	47	45	47	45	45	44	50	49	49	47	48
# Hospital Admissions	3	5	5	7	9	7	10	11	6	5	7	8



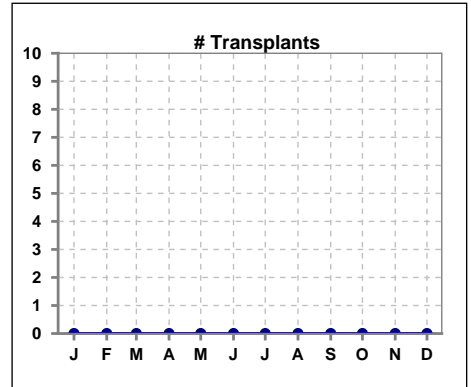
	Jan	Feb	Mar	Apr	May	Jun	Jul	Aug	Sep	Oct	Nov	Dec
# Patient	44	47	45	47	45	45	44	50	49	49	47	48
# Individual Deaths	1	0	0	0	0	1	0	0	2	1	0	0



	Jan	Feb	Mar	Apr	May	Jun	Jul	Aug	Sep	Oct	Nov	Dec
# Patient	44	47	45	47	45	45	44	50	49	49	47	48
# Missed Treatments	60	58	66	61	73	77	80	57	67	80	72	65



	Jan	Feb	Mar	Apr	May	Jun	Jul	Aug	Sep	Oct	Nov	Dec
# Patient	44	47	45	47	45	45	44	50	49	49	47	48
# Transplants	0	0	0	0	0	0	0	0	0	0	0	0



Methodology: a) All labs for 'Adequacy of Dialysis', 'Nutrition', 'Osteodystrophy', 'Anemia' and 'Diabetes' based on last value of month; b) BP's and #L processed are average of all values for month; c) Access data takes last access of month; d) Values for SGA and 'Infection Control' use most recent result.