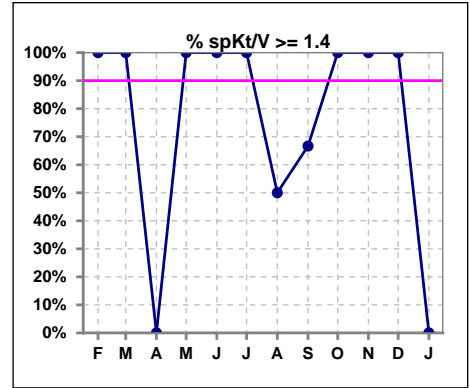
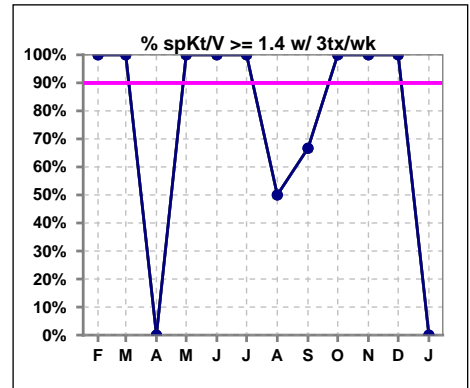


## I. ADEQUACY OF DIALYSIS

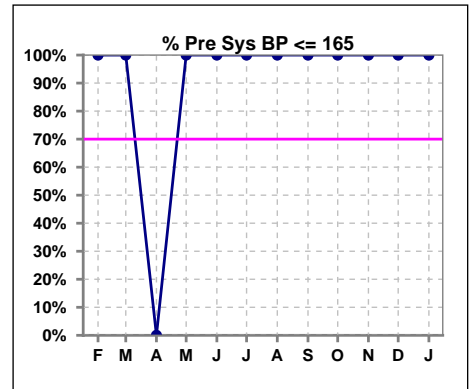
	Feb	Mar	Apr	May	Jun	Jul	Aug	Sep	Oct	Nov	Dec	Jan
# spKt/V	1	1	0	1	1	2	2	3	1	2	1	1
# spKt/V >= 1.4	1	1	0	1	1	2	1	2	1	2	1	0
Pop. Mean	2.02	1.62	0	1.40	2.07	1.87	1.39	1.62	1.50	1.74	1.47	1.26
Std. Deviation	0	0	0	0	0	0.56	0.04	0.22	0	0.20	0	0
% spKt/V >= 1.4	100%	100%	0%	100%	100%	100%	50%	67%	100%	100%	100%	0%
% spKt/V >= 1.2	100%	100%	0%	100%	100%	100%	100%	100%	100%	100%	100%	100%



	Feb	Mar	Apr	May	Jun	Jul	Aug	Sep	Oct	Nov	Dec	Jan
# spKt/V w/ 3tx/wk	1	1	0	1	1	2	2	3	1	2	1	1
# spKt/V>=1.4 w/3tx/wk	1	1	0	1	1	2	1	2	1	2	1	0
Pop. Mean	2.02	1.62	0	1.40	2.07	1.87	1.39	1.62	1.50	1.74	1.47	1.26
Std. Deviation	0	0	0	0	0	0.56	0.04	0.22	0	0.20	0	0
% spKt/V>=1.4 w/3tx/wk	100%	100%	0%	100%	100%	100%	50%	67%	100%	100%	100%	0%



	Feb	Mar	Apr	May	Jun	Jul	Aug	Sep	Oct	Nov	Dec	Jan
# Pre Sys BP	1	1	0	1	1	2	2	3	1	2	1	1
# Pre Sys BP <= 165	1	1	0	1	1	2	2	3	1	2	1	1
Pop. Mean	143	160	0	160	126	137	155	142	112	126	151	129
Std. Deviation	0	0	0	0	0	8.5	7.8	17.8	0	3.5	0	0
%Pre Sys BP <=165	100%	100%	0%	100%	100%	100%	100%	100%	100%	100%	100%	100%



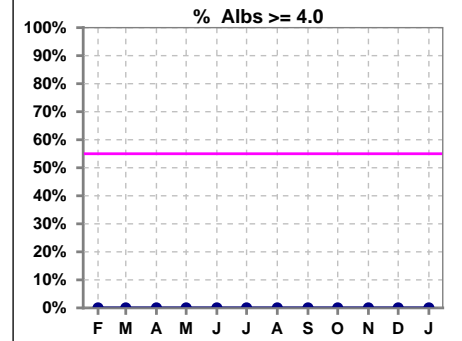
**Panther Lake Kidney Center - Center Hemodialysis**  
**Quality Assurance Reports (Patients in first 90 days of treatment)**  
Through period ending Jan. 31, 2026

2

\*Albumin values use BCG method - as of July 2001

## II. NUTRITION

	Feb	Mar	Apr	May	Jun	Jul	Aug	Sep	Oct	Nov	Dec	Jan
# Albumin	1	1	0	1	1	2	2	3	1	2	1	1
# Albumin >= 4.0	0	0	0	0	0	0	0	0	0	0	0	0
Pop. Mean	2.2	2.9	0	3.2	2.8	3.2	3.8	3.5	3.5	3.0	2.7	3.0
Std. Deviation	0	0	0	0	0	0.21	0.21	0.26	0	0.14	0	0
% Alb >= 4.0	0%	0%	0%	0%	0%	0%	0%	0%	0%	0%	0%	0%

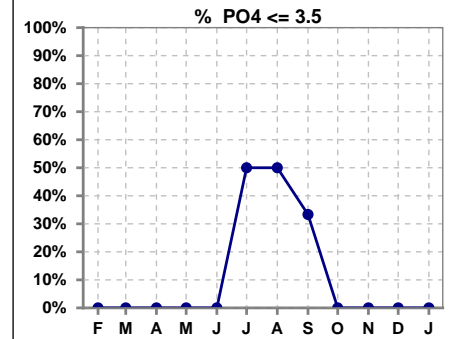


Methodology: a) All labs for 'Adequacy of Dialysis', 'Nutrition', 'Osteodystrophy', 'Anemia' and 'Diabetes' based on last value of month; b) BP's and #L processed are average of all values for month; c) Access data takes last access of month; d) Values for SGA and 'Infection Control' use most recent result.

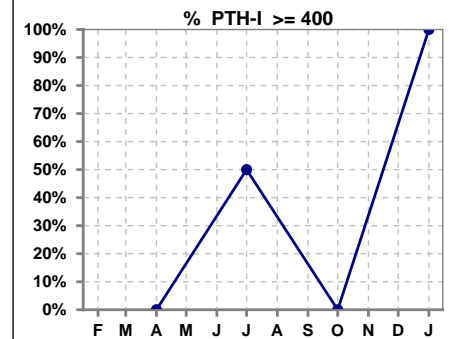
Lab methodology for PTH changed January 2012

### III. OSTEODYSTROPHY

	Feb	Mar	Apr	May	Jun	Jul	Aug	Sep	Oct	Nov	Dec	Jan
# PO4	1	1	0	1	1	2	2	3	1	2	1	1
# PO4 <= 3.5	0	0	0	0	0	1	1	1	0	0	0	0
Pop. Mean	3.9	4.8	0	10.3	5.1	5.2	4.8	4.5	7.0	4.3	4.7	7.5
Std. Deviation	0	0	0	0	0	2.69	1.77	1.89	0	0.35	0	0
% PO4 <= 3.5	0%	0%	0%	0%	0%	50%	50%	33%	0%	0%	0%	0%



	Feb	Mar	Apr	May	Jun	Jul	Aug	Sep	Oct	Nov	Dec	Jan
# PTH-I			0			2			1			1
# PTH-I >= 400			0			1			0			1
Pop. Mean			0			392			275			4189
Std. Deviation			0			182			0			0
% PTH-I >= 400			0%			50%			0%			100%

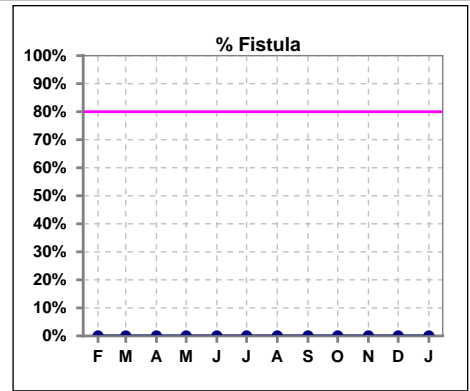


**Panther Lake Kidney Center - Center Hemodialysis**  
**Quality Assurance Reports (Patients in first 90 days of treatment)**  
 Through period ending Jan. 31, 2026

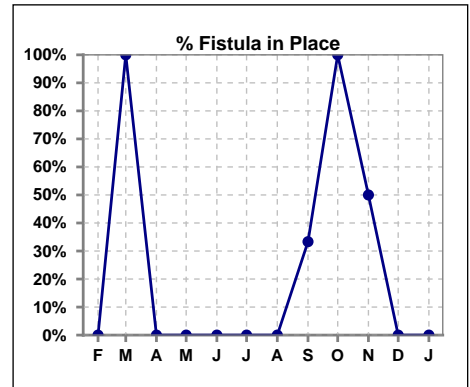
4

**IV. ACCESS**

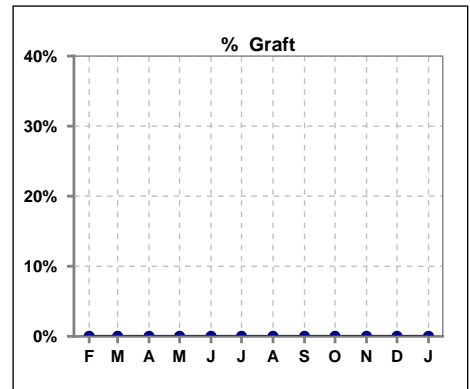
	Feb	Mar	Apr	May	Jun	Jul	Aug	Sep	Oct	Nov	Dec	Jan
# Access	1	1	0	1	1	2	2	3	1	2	1	1
# Fistula	0	0	0	0	0	0	0	0	0	0	0	0
% Fistula	0%	0%	0%	0%	0%	0%	0%	0%	0%	0%	0%	0%



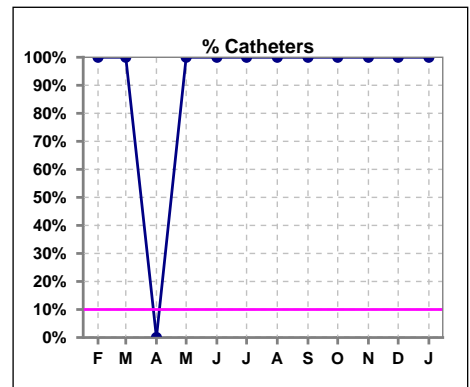
	Feb	Mar	Apr	May	Jun	Jul	Aug	Sep	Oct	Nov	Dec	Jan
# Patient	1	1	0	1	1	2	2	3	1	2	1	1
# Fistula in Place	0	1	0	0	0	0	0	1	1	1	0	0
% Fistula in Place	0%	100%	0%	0%	0%	0%	0%	33%	100%	50%	0%	0%



	Feb	Mar	Apr	May	Jun	Jul	Aug	Sep	Oct	Nov	Dec	Jan
# Access	1	1	0	1	1	2	2	3	1	2	1	1
# Graft	0	0	0	0	0	0	0	0	0	0	0	0
% Graft	0%	0%	0%	0%	0%	0%	0%	0%	0%	0%	0%	0%



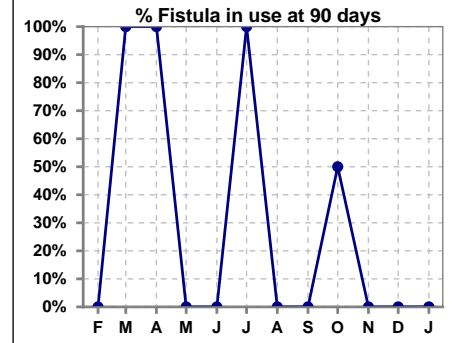
	Feb	Mar	Apr	May	Jun	Jul	Aug	Sep	Oct	Nov	Dec	Jan
# Access	1	1	0	1	1	2	2	3	1	2	1	1
# Catheters	1	1	0	1	1	2	2	3	1	2	1	1
% Catheters	100%	100%	0%	100%	100%	100%	100%	100%	100%	100%	100%	100%



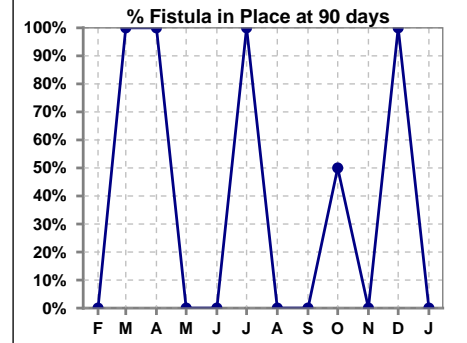
Methodology: a) All labs for 'Adequacy of Dialysis', 'Nutrition', 'Osteodystrophy', 'Anemia' and 'Diabetes' based on last value of month; b) BP's and #L processed are average of all values for month; c) Access data takes last access of month; d) Values for SGA and 'Infection Control' use most recent result.

**IV. ACCESS - CONT. Access at 90 days for those patients that reached 90 days within the month.**

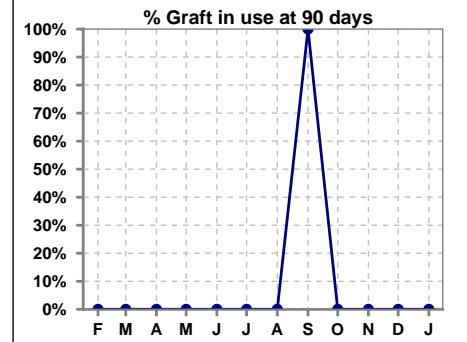
	Feb	Mar	Apr	May	Jun	Jul	Aug	Sep	Oct	Nov	Dec	Jan
# Patient	0	1	1	1	0	2	0	1	2	0	1	0
# Fistula in use	0	1	1	0	0	2	0	0	1	0	0	0
% Fistula in use	0%	100%	100%	0%	0%	100%	0%	0%	50%	0%	0%	0%



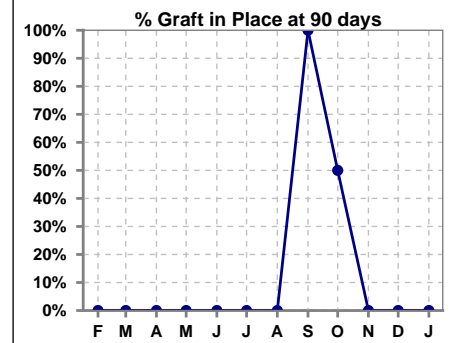
	Feb	Mar	Apr	May	Jun	Jul	Aug	Sep	Oct	Nov	Dec	Jan
# Patient	0	1	1	1	0	2	0	1	2	0	1	0
# Fistula in Place	0	1	1	0	0	2	0	0	1	0	1	0
% Fistula in Place	0%	100%	100%	0%	0%	100%	0%	0%	50%	0%	100%	0%



	Feb	Mar	Apr	May	Jun	Jul	Aug	Sep	Oct	Nov	Dec	Jan
# Patient	0	1	1	1	0	2	0	1	2	0	1	0
# Graft in use	0	0	0	0	0	0	0	1	0	0	0	0
% Graft in use	0%	0%	0%	0%	0%	0%	0%	100%	0%	0%	0%	0%

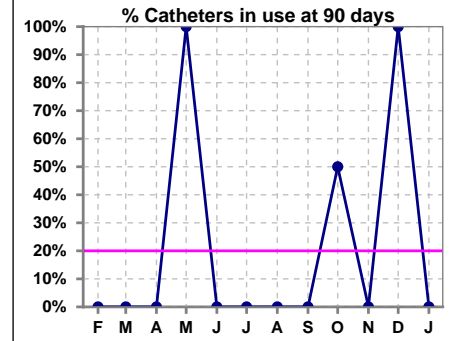


	Feb	Mar	Apr	May	Jun	Jul	Aug	Sep	Oct	Nov	Dec	Jan
# Patient	0	1	1	1	0	2	0	1	2	0	1	0
# Graft in Place	0	0	0	0	0	0	0	1	1	0	0	0
% Graft in Place	0%	0%	0%	0%	0%	0%	0%	100%	50%	0%	0%	0%

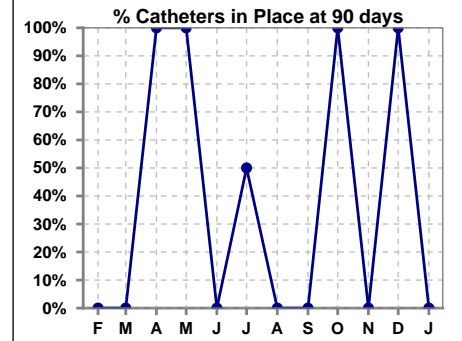


**IV. ACCESS - CONT. Access at 90 days for those patients that reached 90 days within the month.**

	Feb	Mar	Apr	May	Jun	Jul	Aug	Sep	Oct	Nov	Dec	Jan
# Patient	0	1	1	1	0	2	0	1	2	0	1	0
# Catheters in use	0	0	0	1	0	0	0	0	1	0	1	0
% Catheters in use	0%	0%	0%	100%	0%	0%	0%	0%	50%	0%	100%	0%

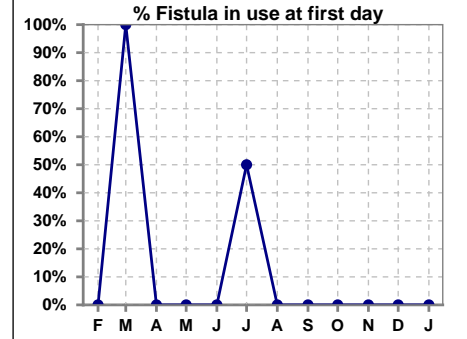


	Feb	Mar	Apr	May	Jun	Jul	Aug	Sep	Oct	Nov	Dec	Jan
# Patient	0	1	1	1	0	2	0	1	2	0	1	0
# Catheters in Place	0	0	1	1	0	1	0	0	2	0	1	0
% Catheters in Place	0%	0%	100%	100%	0%	50%	0%	0%	100%	0%	100%	0%

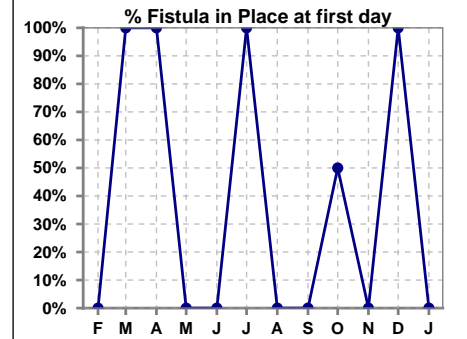


**IV. ACCESS - CONT. Access at first day for those patients that reached 90 days within the month.**

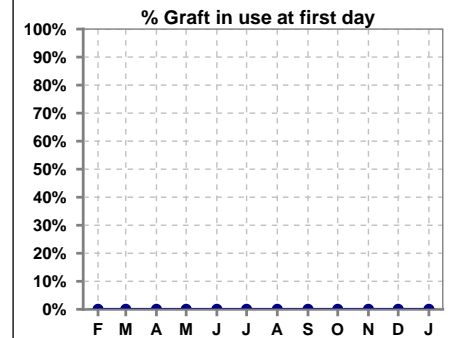
	Feb	Mar	Apr	May	Jun	Jul	Aug	Sep	Oct	Nov	Dec	Jan
# Patient	0	1	1	1	0	2	0	1	2	0	1	0
# Fistula in use	0	1	0	0	0	1	0	0	0	0	0	0
% Fistula in use	0%	100%	0%	0%	0%	50%	0%	0%	0%	0%	0%	0%



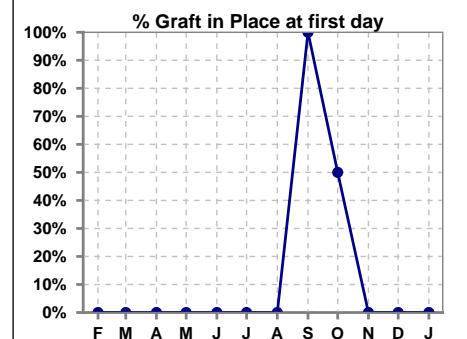
	Feb	Mar	Apr	May	Jun	Jul	Aug	Sep	Oct	Nov	Dec	Jan
# Patient	0	1	1	1	0	2	0	1	2	0	1	0
# Fistula in Place	0	1	1	0	0	2	0	0	1	0	1	0
% Fistula in Place	0%	100%	100%	0%	0%	100%	0%	0%	50%	0%	100%	0%



	Feb	Mar	Apr	May	Jun	Jul	Aug	Sep	Oct	Nov	Dec	Jan
# Patient	0	1	1	1	0	2	0	1	2	0	1	0
# Graft in use	0	0	0	0	0	0	0	0	0	0	0	0
% Graft in use	0%	0%	0%	0%	0%	0%	0%	0%	0%	0%	0%	0%

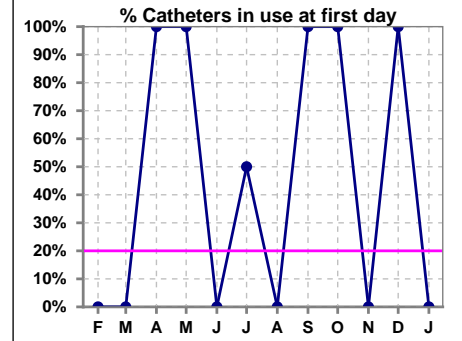


	Feb	Mar	Apr	May	Jun	Jul	Aug	Sep	Oct	Nov	Dec	Jan
# Patient	0	1	1	1	0	2	0	1	2	0	1	0
# Graft in Place	0	0	0	0	0	0	0	1	1	0	0	0
% Graft in Place	0%	0%	0%	0%	0%	0%	0%	100%	50%	0%	0%	0%

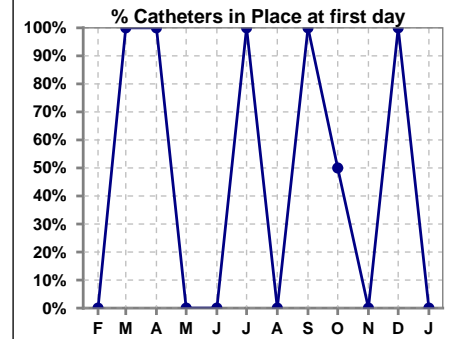


**IV. ACCESS - CONT. Access at first day for those patients that reached 90 days within the month.**

	Feb	Mar	Apr	May	Jun	Jul	Aug	Sep	Oct	Nov	Dec	Jan
# Patient	0	1	1	1	0	2	0	1	2	0	1	0
# Catheters in use	0	0	1	1	0	1	0	1	2	0	1	0
% Catheters in use	0%	0%	100%	100%	0%	50%	0%	100%	100%	0%	100%	0%



	Feb	Mar	Apr	May	Jun	Jul	Aug	Sep	Oct	Nov	Dec	Jan
# Patient	0	1	1	1	0	2	0	1	2	0	1	0
# Catheters in Place	0	1	1	0	0	2	0	1	1	0	1	0
% Catheters in Place	0%	100%	100%	0%	0%	100%	0%	100%	50%	0%	100%	0%

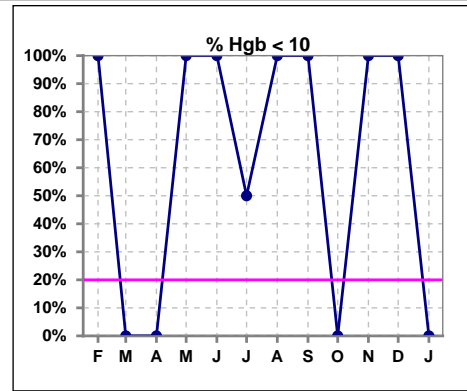




## V. ANEMIA

	Feb	Mar	Apr	May	Jun	Jul	Aug	Sep	Oct	Nov	Dec	Jan
# Hgb	1	1	0	1	1	2	2	2	0	1	1	0
# Hgb <= 10	1	0	0	1	1	1	2	2	0	1	1	0
Pop. Mean	8.3	10.8	0	8.4	9.7	10.3	9.3	9.5	0	8.5	7.6	0
Std. Deviation	0	0	0	0	0	3.5	0	0.8	0	0	0	0
% Hgb <= 10	100%	0%	0%	100%	100%	50%	100%	100%	0%	100%	100%	0%

Note: Excludes patients who received no ESA in month.



	Feb	Mar	Apr	May	Jun	Jul	Aug	Sep	Oct	Nov	Dec	Jan
# Hgb	1	1	0	1	1	2	2	2	0	1	1	0
# Hgb >= 12	0	0	0	0	0	1	0	0	0	0	0	0
Pop. Mean	8.3	10.8	0	8.4	9.7	10.3	9.3	9.5	0	8.5	7.6	0
Std. Deviation	0	0	0	0	0	3.5	0	0.8	0	0	0	0
% Hgb >= 12	0%	0%	0%	0%	0%	50%	0%	0%	0%	0%	0%	0%

Note: Excludes patients who received no ESA in month.

