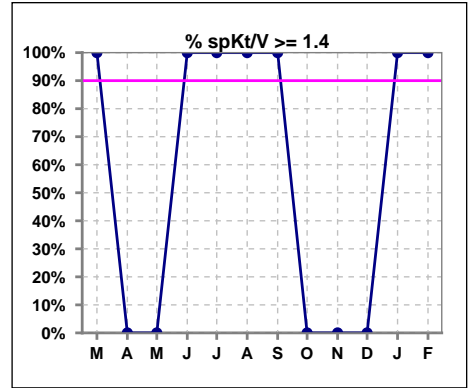
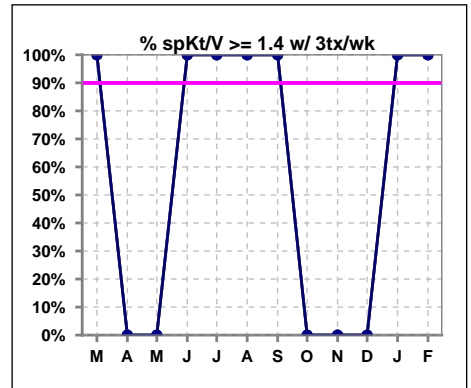


**I. ADEQUACY OF DIALYSIS**

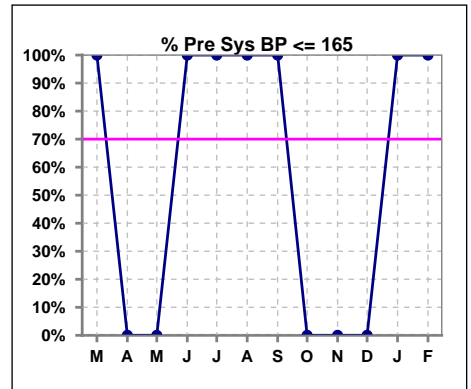
	Mar	Apr	May	Jun	Jul	Aug	Sep	Oct	Nov	Dec	Jan	Feb
# spKt/V	1	0	0	1	2	1	1	0	0	0	1	1
# spKt/V >= 1.4	1	0	0	1	2	1	1	0	0	0	1	1
Pop. Mean	1.67	0	0	1.96	1.80	1.79	1.80	0	0	0	2.35	2.02
Std. Deviation	0	0	0	0	0.47	0	0	0	0	0	0	0
% spKt/V >= 1.4	100%	0%	0%	100%	100%	100%	100%	0%	0%	0%	100%	100%
% spKt/V >= 1.2	100%	0%	0%	100%	100%	100%	100%	0%	0%	0%	100%	100%



	Mar	Apr	May	Jun	Jul	Aug	Sep	Oct	Nov	Dec	Jan	Feb
# spKt/V w/ 3tx/wk	1	0	0	1	2	1	1	0	0	0	1	1
# spKt/V >= 1.4 w/3tx/wk	1	0	0	1	2	1	1	0	0	0	1	1
Pop. Mean	1.67	0	0	1.96	1.80	1.79	1.80	0	0	0	2.35	2.02
Std. Deviation	0	0	0	0	0.47	0	0	0	0	0	0	0
% spKt/V >= 1.4 w/3tx/wk	100%	0%	0%	100%	100%	100%	100%	0%	0%	0%	100%	100%



	Mar	Apr	May	Jun	Jul	Aug	Sep	Oct	Nov	Dec	Jan	Feb
# Pre Sys BP	1	0	0	1	2	1	1	0	0	0	1	1
# Pre Sys BP <= 165	1	0	0	1	2	1	1	0	0	0	1	1
Pop. Mean	156	0	0	132	146	140	147	0	0	0	154	143
Std. Deviation	0	0	0	0	15.6	0	0	0	0	0	0	0
% Pre Sys BP <= 165	100%	0%	0%	100%	100%	100%	100%	0%	0%	0%	100%	100%

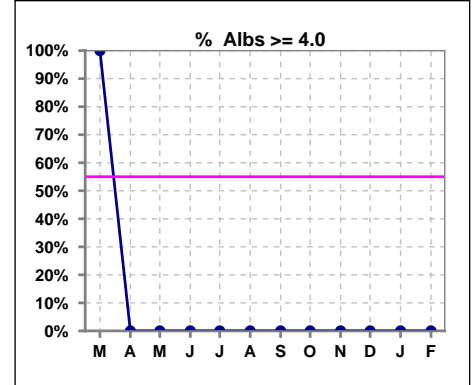


Methodology: a) All labs for 'Adequacy of Dialysis', 'Nutrition', 'Osteodystrophy', 'Anemia' and 'Diabetes' based on last value of month; b) BP's and #L processed are average of all values for month; c) Access data takes last access of month; d) Values for SGA and 'Infection Control' use most recent result.

\*Albumin values use BCG method - as of July 2001

**II. NUTRITION**

	Mar	Apr	May	Jun	Jul	Aug	Sep	Oct	Nov	Dec	Jan	Feb
# Albumin	1	0	0	1	2	1	1	0	0	0	1	1
# Albumin >= 4.0	1	0	0	0	0	0	0	0	0	0	0	0
Pop. Mean	4.5	0	0	3.3	3.2	3.2	3.6	0	0	0	2.0	2.2
Std. Deviation	0	0	0	0	0.07	0	0	0	0	0	0	0
% Alb >= 4.0	100%	0%	0%	0%	0%	0%	0%	0%	0%	0%	0%	0%

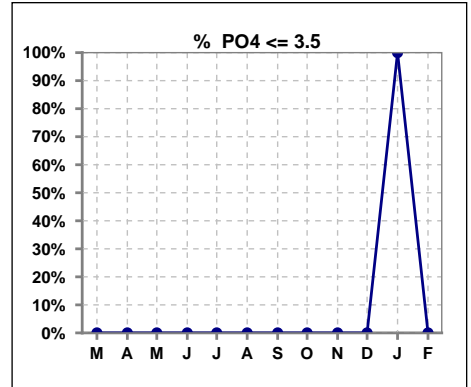


Methodology: a) All labs for 'Adequacy of Dialysis', 'Nutrition', 'Osteodystrophy', 'Anemia' and 'Diabetes' based on last value of month; b) BP's and #L processed are average of all values for month; c) Access data takes last access of month; d) Values for SGA and 'Infection Control' use most recent result.

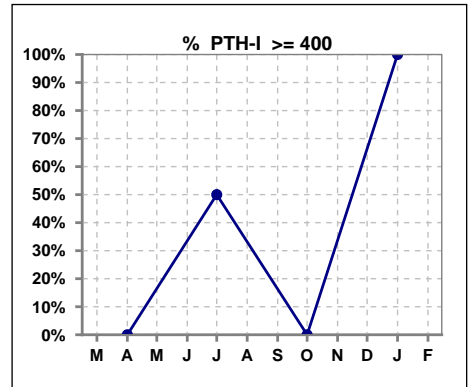
Lab methodology for PTH changed January 2012

**III. OSTEODYSTROPHY**

	Mar	Apr	May	Jun	Jul	Aug	Sep	Oct	Nov	Dec	Jan	Feb
# PO4	1	0	0	1	2	1	1	0	0	0	1	1
# PO4 <= 3.5	0	0	0	0	0	0	0	0	0	0	1	0
Pop. Mean	5.8	0	0	4.8	5.4	5.4	5.7	0	0	0	2.9	3.9
Std. Deviation	0	0	0	0	1.56	0	0	0	0	0	0	0
<b>% PO4 &lt;= 3.5</b>	0%	0%	0%	0%	0%	0%	0%	0%	0%	0%	100%	0%



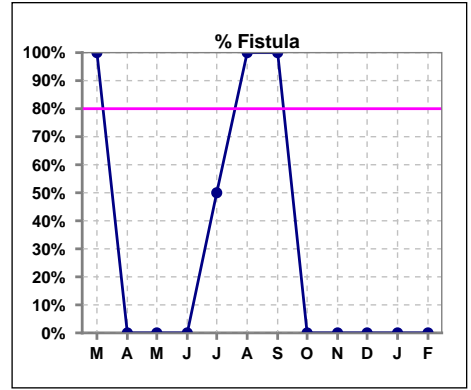
	Mar	Apr	May	Jun	Jul	Aug	Sep	Oct	Nov	Dec	Jan	Feb
# PTH-I		0			2			0			1	
# PTH-I >= 400		0			1			0			1	
Pop. Mean		0			326			0			434	
Std. Deviation		0			136			0			0	
<b>% PTH-I &gt;= 400</b>		0%			50%			0%			100%	



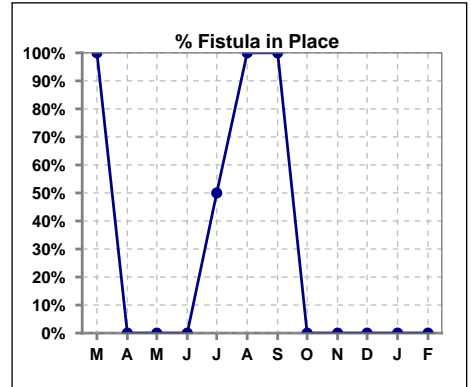
Methodology: a) All labs for 'Adequacy of Dialysis', 'Nutrition', 'Osteodystrophy', 'Anemia' and 'Diabetes' based on last value of month; b) BP's and #L processed are average of all values for month; c) Access data takes last access of month; d) Values for SGA and 'Infection Control' use most recent result.

**IV. ACCESS**

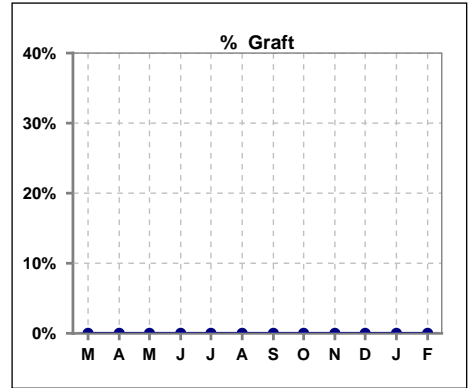
	Mar	Apr	May	Jun	Jul	Aug	Sep	Oct	Nov	Dec	Jan	Feb
# Access	1	0	0	1	2	1	1	0	0	0	1	1
# Fistula	1	0	0	0	1	1	1	0	0	0	0	0
<b>% Fistula</b>	100%	0%	0%	0%	50%	100%	100%	0%	0%	0%	0%	0%



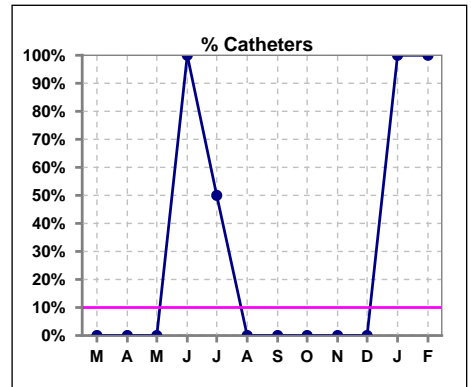
	Mar	Apr	May	Jun	Jul	Aug	Sep	Oct	Nov	Dec	Jan	Feb
# Patient	1	0	0	1	2	1	1	0	0	0	1	1
# Fistula in Place	1	0	0	0	1	1	1	0	0	0	0	0
<b>% Fistula in Place</b>	100%	0%	0%	0%	50%	100%	100%	0%	0%	0%	0%	0%



	Mar	Apr	May	Jun	Jul	Aug	Sep	Oct	Nov	Dec	Jan	Feb
# Access	1	0	0	1	2	1	1	0	0	0	1	1
# Graft	0	0	0	0	0	0	0	0	0	0	0	0
<b>% Graft</b>	0%	0%	0%	0%	0%	0%	0%	0%	0%	0%	0%	0%



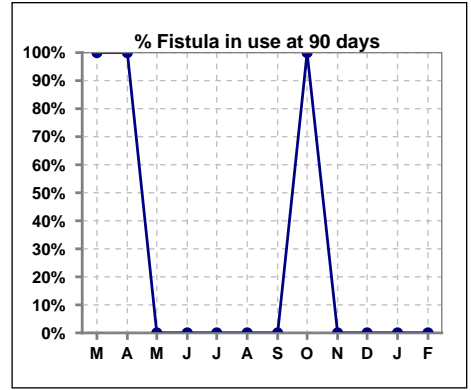
	Mar	Apr	May	Jun	Jul	Aug	Sep	Oct	Nov	Dec	Jan	Feb
# Access	1	0	0	1	2	1	1	0	0	0	1	1
# Catheters	0	0	0	1	1	0	0	0	0	0	1	1
<b>% Catheters</b>	0%	0%	0%	100%	50%	0%	0%	0%	0%	0%	100%	100%



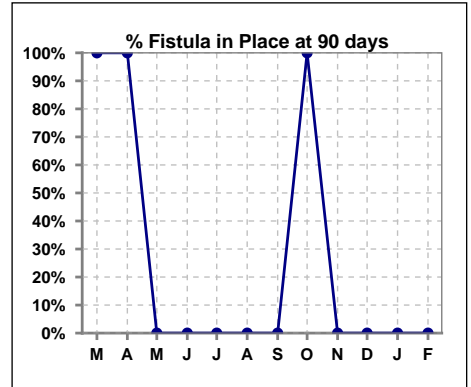
Methodology: a) All labs for 'Adequacy of Dialysis', 'Nutrition', 'Osteodystrophy', 'Anemia' and 'Diabetes' based on last value of month; b) BP's and #L processed are average of all values for month; c) Access data takes last access of month; d) Values for SGA and 'Infection Control' use most recent result.

**IV. ACCESS - CONT. Access at 90 days for those patients that reached 90 days within the month.**

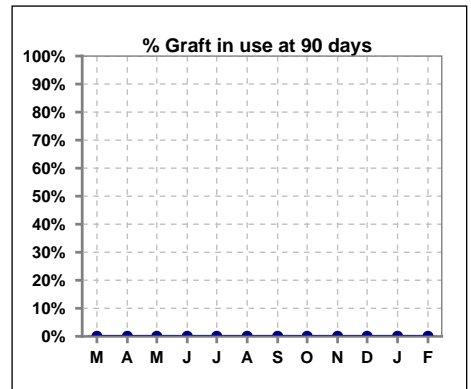
	Mar	Apr	May	Jun	Jul	Aug	Sep	Oct	Nov	Dec	Jan	Feb
# Patient	1	1	0	0	0	1	0	1	0	0	0	0
# Fistula in use	1	1	0	0	0	0	0	1	0	0	0	0
<b>% Fistula in use</b>	<b>100%</b>	<b>100%</b>	<b>0%</b>	<b>0%</b>	<b>0%</b>	<b>0%</b>	<b>0%</b>	<b>100%</b>	<b>0%</b>	<b>0%</b>	<b>0%</b>	<b>0%</b>



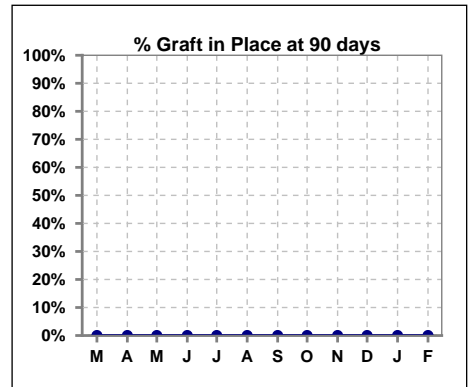
	Mar	Apr	May	Jun	Jul	Aug	Sep	Oct	Nov	Dec	Jan	Feb
# Patient	1	1	0	0	0	1	0	1	0	0	0	0
# Fistula in Place	1	1	0	0	0	0	0	1	0	0	0	0
<b>% Fistula in Place</b>	<b>100%</b>	<b>100%</b>	<b>0%</b>	<b>0%</b>	<b>0%</b>	<b>0%</b>	<b>0%</b>	<b>100%</b>	<b>0%</b>	<b>0%</b>	<b>0%</b>	<b>0%</b>



	Mar	Apr	May	Jun	Jul	Aug	Sep	Oct	Nov	Dec	Jan	Feb
# Patient	1	1	0	0	0	1	0	1	0	0	0	0
# Graft in use	0	0	0	0	0	0	0	0	0	0	0	0
<b>% Graft in use</b>	<b>0%</b>	<b>0%</b>	<b>0%</b>	<b>0%</b>	<b>0%</b>	<b>0%</b>	<b>0%</b>	<b>0%</b>	<b>0%</b>	<b>0%</b>	<b>0%</b>	<b>0%</b>



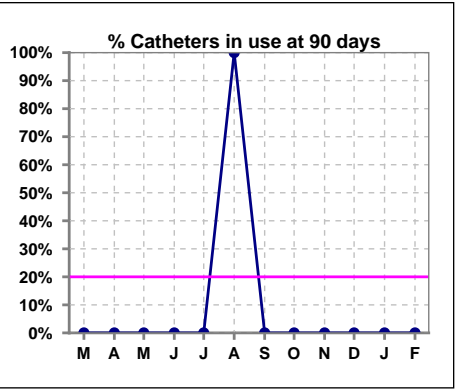
	Mar	Apr	May	Jun	Jul	Aug	Sep	Oct	Nov	Dec	Jan	Feb
# Patient	1	1	0	0	0	1	0	1	0	0	0	0
# Graft in Place	0	0	0	0	0	0	0	0	0	0	0	0
<b>% Graft in Place</b>	<b>0%</b>	<b>0%</b>	<b>0%</b>	<b>0%</b>	<b>0%</b>	<b>0%</b>	<b>0%</b>	<b>0%</b>	<b>0%</b>	<b>0%</b>	<b>0%</b>	<b>0%</b>



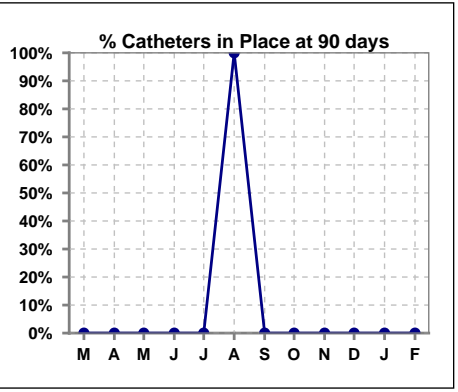
Methodology: a) All labs for 'Adequacy of Dialysis', 'Nutrition', 'Osteodystrophy', 'Anemia' and 'Diabetes' based on last value of month; b) BP's and #L processed are average of all values for month; c) Access data takes last access of month; d) Values for SGA and 'Infection Control' use most recent result.

**IV. ACCESS - CONT. Access at 90 days for those patients that reached 90 days within the month.**

	Mar	Apr	May	Jun	Jul	Aug	Sep	Oct	Nov	Dec	Jan	Feb
# Patient	1	1	0	0	0	1	0	1	0	0	0	0
# Catheters in use	0	0	0	0	0	1	0	0	0	0	0	0
% Catheters in use	0%	0%	0%	0%	0%	100%	0%	0%	0%	0%	0%	0%



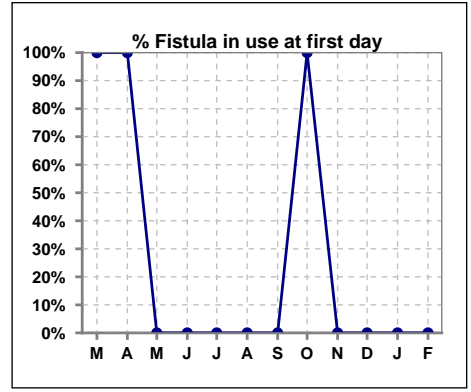
	Mar	Apr	May	Jun	Jul	Aug	Sep	Oct	Nov	Dec	Jan	Feb
# Patient	1	1	0	0	0	1	0	1	0	0	0	0
# Catheters in Place	0	0	0	0	0	1	0	0	0	0	0	0
% Catheters in Place	0%	0%	0%	0%	0%	100%	0%	0%	0%	0%	0%	0%



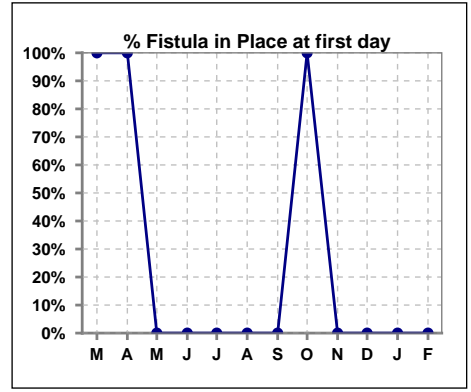
Methodology: a) All labs for 'Adequacy of Dialysis', 'Nutrition', 'Osteodystrophy', 'Anemia' and 'Diabetes' based on last value of month; b) BP's and #L processed are average of all values for month; c) Access data takes last access of month; d) Values for SGA and 'Infection Control' use most recent result.

**IV. ACCESS - CONT. Access at first day for those patients that reached 90 days within the month.**

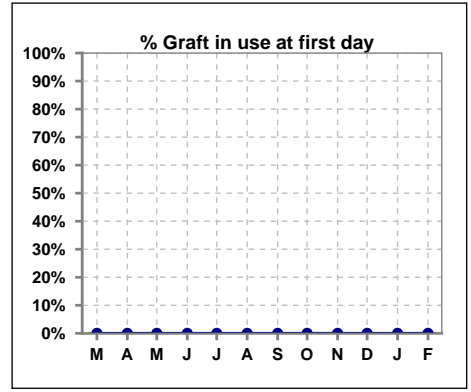
	Mar	Apr	May	Jun	Jul	Aug	Sep	Oct	Nov	Dec	Jan	Feb
# Patient	1	1	0	0	0	1	0	1	0	0	0	0
# Fistula in use	1	1	0	0	0	0	0	1	0	0	0	0
<b>% Fistula in use</b>	<b>100%</b>	<b>100%</b>	<b>0%</b>	<b>0%</b>	<b>0%</b>	<b>0%</b>	<b>0%</b>	<b>100%</b>	<b>0%</b>	<b>0%</b>	<b>0%</b>	<b>0%</b>



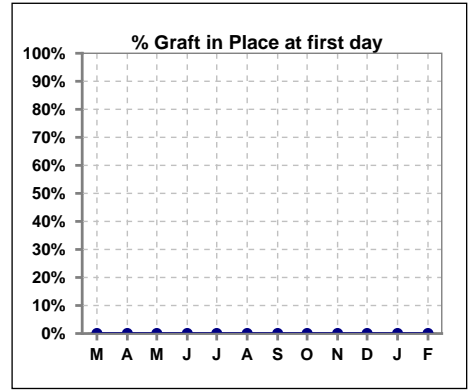
	Mar	Apr	May	Jun	Jul	Aug	Sep	Oct	Nov	Dec	Jan	Feb
# Patient	1	1	0	0	0	1	0	1	0	0	0	0
# Fistula in Place	1	1	0	0	0	0	0	1	0	0	0	0
<b>% Fistula in Place</b>	<b>100%</b>	<b>100%</b>	<b>0%</b>	<b>0%</b>	<b>0%</b>	<b>0%</b>	<b>0%</b>	<b>100%</b>	<b>0%</b>	<b>0%</b>	<b>0%</b>	<b>0%</b>



	Mar	Apr	May	Jun	Jul	Aug	Sep	Oct	Nov	Dec	Jan	Feb
# Patient	1	1	0	0	0	1	0	1	0	0	0	0
# Graft in use	0	0	0	0	0	0	0	0	0	0	0	0
<b>% Graft in use</b>	<b>0%</b>	<b>0%</b>	<b>0%</b>	<b>0%</b>	<b>0%</b>	<b>0%</b>	<b>0%</b>	<b>0%</b>	<b>0%</b>	<b>0%</b>	<b>0%</b>	<b>0%</b>



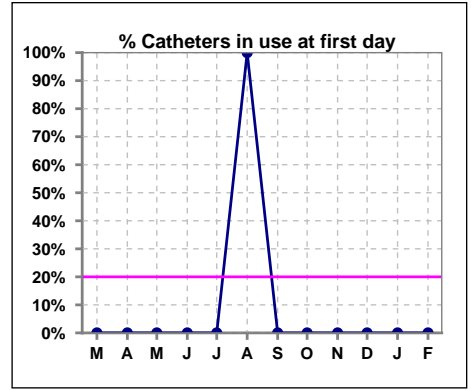
	Mar	Apr	May	Jun	Jul	Aug	Sep	Oct	Nov	Dec	Jan	Feb
# Patient	1	1	0	0	0	1	0	1	0	0	0	0
# Graft in Place	0	0	0	0	0	0	0	0	0	0	0	0
<b>% Graft in Place</b>	<b>0%</b>	<b>0%</b>	<b>0%</b>	<b>0%</b>	<b>0%</b>	<b>0%</b>	<b>0%</b>	<b>0%</b>	<b>0%</b>	<b>0%</b>	<b>0%</b>	<b>0%</b>



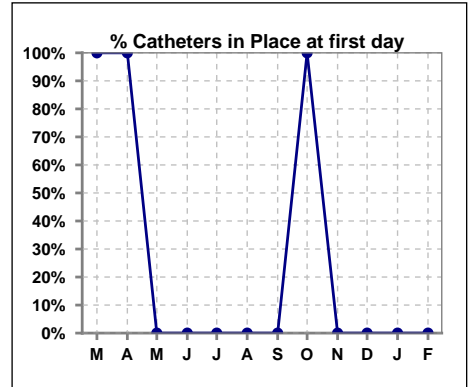
Methodology: a) All labs for 'Adequacy of Dialysis', 'Nutrition', 'Osteodystrophy', 'Anemia' and 'Diabetes' based on last value of month; b) BP's and #L processed are average of all values for month; c) Access data takes last access of month; d) Values for SGA and 'Infection Control' use most recent result.

**IV. ACCESS - CONT. Access at first day for those patients that reached 90 days within the month.**

	Mar	Apr	May	Jun	Jul	Aug	Sep	Oct	Nov	Dec	Jan	Feb
# Patient	1	1	0	0	0	1	0	1	0	0	0	0
# Catheters in use	0	0	0	0	0	1	0	0	0	0	0	0
% Catheters in use	0%	0%	0%	0%	0%	100%	0%	0%	0%	0%	0%	0%



	Mar	Apr	May	Jun	Jul	Aug	Sep	Oct	Nov	Dec	Jan	Feb
# Patient	1	1	0	0	0	1	0	1	0	0	0	0
# Catheters in Place	1	1	0	0	0	0	0	1	0	0	0	0
% Catheters in Place	100%	100%	0%	0%	0%	0%	0%	100%	0%	0%	0%	0%



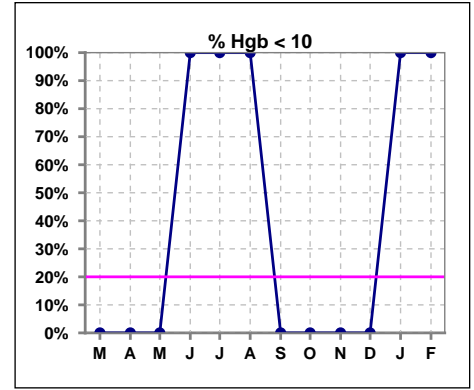
Methodology: a) All labs for 'Adequacy of Dialysis', 'Nutrition', 'Osteodystrophy', 'Anemia' and 'Diabetes' based on last value of month; b) BP's and #L processed are average of all values for month; c) Access data takes last access of month; d) Values for SGA and 'Infection Control' use most recent result.



**V. ANEMIA**

	Mar	Apr	May	Jun	Jul	Aug	Sep	Oct	Nov	Dec	Jan	Feb
# Hgb	1	0	0	1	2	1	1	0	0	0	1	1
# Hgb <= 10	0	0	0	1	2	1	0	0	0	0	1	1
Pop. Mean	10.4	0	0	8.8	9.4	9.0	11.1	0	0	0	8.4	8.3
Std. Deviation	0	0	0	0	0.9	0	0	0	0	0	0	0
% Hgb <= 10	0%	0%	0%	100%	100%	100%	0%	0%	0%	0%	100%	100%

Note: Excludes patients who received no ESA in month.



	Mar	Apr	May	Jun	Jul	Aug	Sep	Oct	Nov	Dec	Jan	Feb
# Hgb	1	0	0	1	2	1	1	0	0	0	1	1
# Hgb >= 12	0	0	0	0	0	0	0	0	0	0	0	0
Pop. Mean	10.4	0	0	8.8	9.4	9.0	11.1	0	0	0	8.4	8.3
Std. Deviation	0	0	0	0	0.9	0	0	0	0	0	0	0
% Hgb >= 12	0%	0%	0%	0%	0%	0%	0%	0%	0%	0%	0%	0%

Note: Excludes patients who received no ESA in month.

