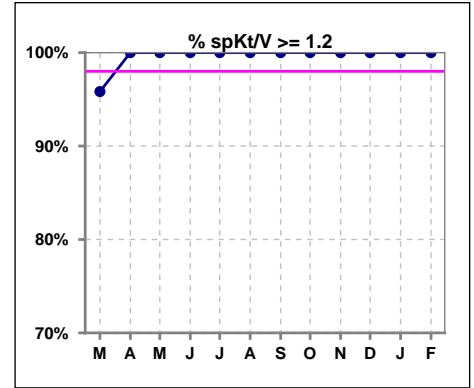
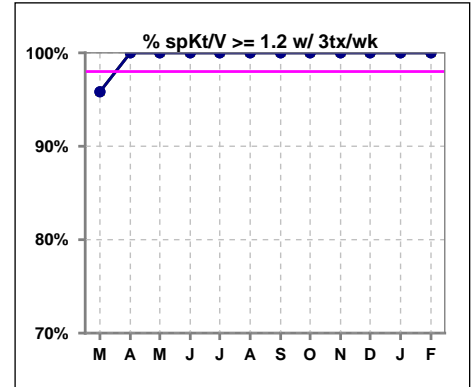


I. ADEQUACY OF DIALYSIS

	Mar	Apr	May	Jun	Jul	Aug	Sep	Oct	Nov	Dec	Jan	Feb
# spKt/V	24	22	21	21	21	22	22	23	22	19	20	22
# spKt/V >= 1.2	23	22	21	21	21	22	22	23	22	19	20	22
Pop. Mean	1.75	1.81	1.76	1.72	1.75	1.73	1.72	1.71	1.66	1.70	1.75	1.65
Std. Deviation	0.36	0.30	0.30	0.32	0.30	0.32	0.29	0.30	0.28	0.27	0.30	0.27
% spKt/V >= 1.2	96%	100%	100%	100%	100%	100%	100%	100%	100%	100%	100%	100%



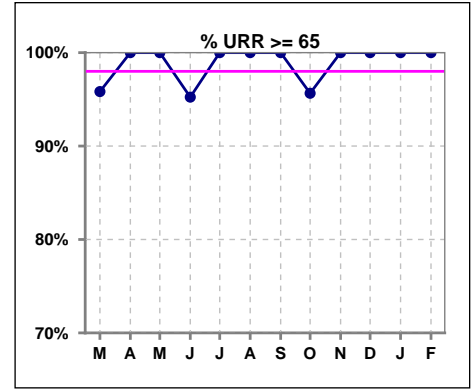
	Mar	Apr	May	Jun	Jul	Aug	Sep	Oct	Nov	Dec	Jan	Feb
# spKt/V w/ 3tx/wk	24	22	21	21	21	22	22	23	22	19	19	21
# spKt/V >= 1.2 w/3tx/wk	23	22	21	21	21	22	22	23	22	19	19	21
Pop. Mean	1.75	1.81	1.76	1.72	1.75	1.73	1.72	1.71	1.66	1.70	1.77	1.66
Std. Deviation	0.36	0.30	0.31	0.32	0.30	0.32	0.29	0.30	0.28	0.27	0.29	0.27
% >= 1.2 w/3tx/wk	96%	100%	100%	100%	100%	100%	100%	100%	100%	100%	100%	100%



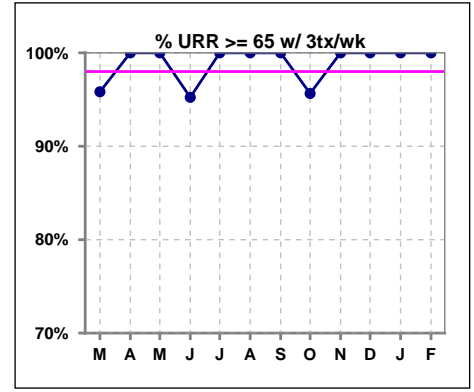
Methodology: a) All labs for 'Adequacy of Dialysis', 'Nutrition', 'Osteodystrophy', 'Anemia' and 'Diabetes' based on last value of month; b) BP's and #L processed are average of all values for month; c) Access data takes last access of month; d) Values for SGA and 'Infection Control' use most recent result.

I. ADEQUACY OF DIALYSIS - CONT.

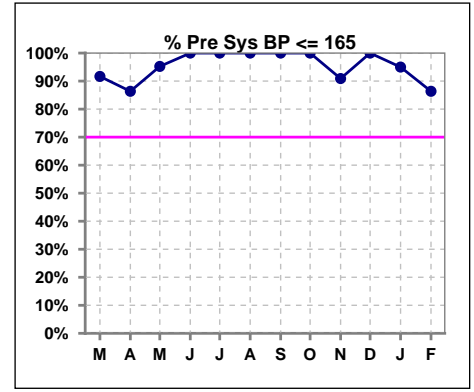
	Mar	Apr	May	Jun	Jul	Aug	Sep	Oct	Nov	Dec	Jan	Feb
# URR	24	22	21	21	22	22	22	23	22	19	20	22
# URR >= 65	23	22	21	20	22	22	22	22	22	19	20	22
Pop. Mean	77	78	77	77	77	77	77	77	76	77	77	76
Std. Deviation	7.30	5.17	5.78	6.37	5.58	5.69	5.44	5.59	5.24	4.96	5.37	5.29
% URR >= 65	96%	100%	100%	95%	100%	100%	100%	96%	100%	100%	100%	100%



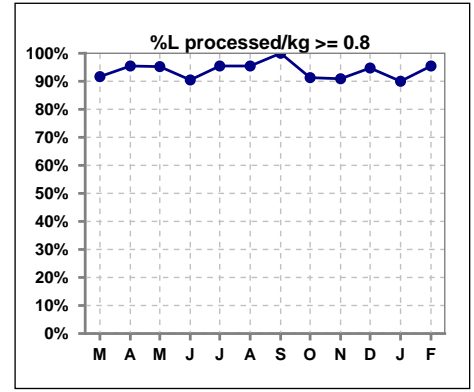
	Mar	Apr	May	Jun	Jul	Aug	Sep	Oct	Nov	Dec	Jan	Feb
# URR w/ 3tx/wk	24	22	21	21	22	22	22	23	22	19	20	22
# URR>=65 w/ 3tx/wk	23	22	21	20	22	22	22	22	22	19	20	22
Pop. Mean	77	78	77	77	77	77	77	77	76	77	77	76
Std. Deviation	7.30	5.17	5.78	6.37	5.58	5.69	5.44	5.59	5.24	4.96	5.37	5.29
% URR>=65 w/ 3tx/wk	96%	100%	100%	95%	100%	100%	100%	96%	100%	100%	100%	100%



	Mar	Apr	May	Jun	Jul	Aug	Sep	Oct	Nov	Dec	Jan	Feb
# Pre Sys BP	24	22	21	21	22	22	22	23	22	19	20	22
# Pre Sys BP <= 165	22	20	20	21	22	22	22	23	20	19	19	19
Pop. Mean	142	142	140	139	139	139	139	145	148	145	145	149
Std. Deviation	17.4	17.0	15.4	14.1	16.3	14.9	12.0	12.4	13.7	10.5	14.4	19.0
% Pre Sys BP <=165	92%	86%	95%	100%	100%	100%	100%	100%	91%	100%	95%	86%



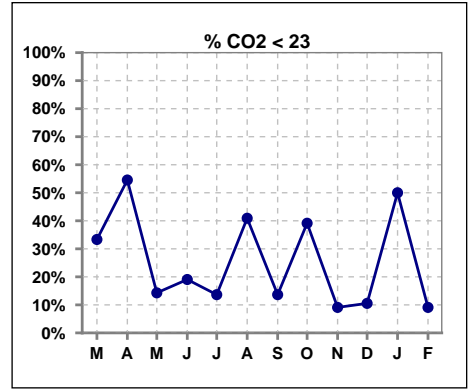
	Mar	Apr	May	Jun	Jul	Aug	Sep	Oct	Nov	Dec	Jan	Feb
# L processed/kg	24	22	21	21	22	22	22	23	22	19	20	22
# L processed/kg>=0.8	22	21	20	19	21	21	22	21	20	18	18	21
Pop. Mean	1	1	1	1	1	1	1	1	1	1	1	1
Std. Deviation	0.4	0.3	0.3	0.3	0.2	0.3	0.2	0.3	0.3	0.3	0.3	0.2
% L processed/kg>=0.8	92%	95%	95%	90%	95%	95%	100%	91%	91%	95%	90%	95%



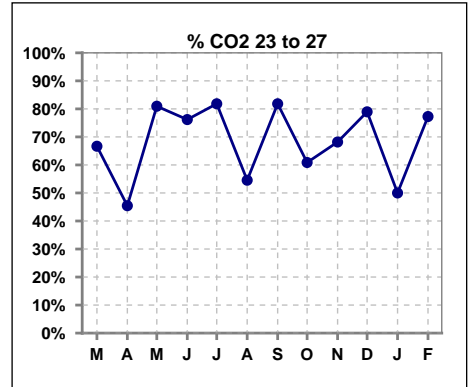
Methodology: a) All labs for 'Adequacy of Dialysis', 'Nutrition', 'Osteodystrophy', 'Anemia' and 'Diabetes' based on last value of month; b) BP's and #L processed are average of all values for month; c) Access data takes last access of month; d) Values for SGA and 'Infection Control' use most recent result.

I. ADEQUACY OF DIALYSIS - CONT.

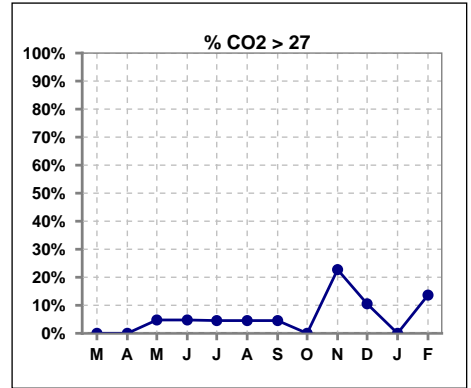
	Mar	Apr	May	Jun	Jul	Aug	Sep	Oct	Nov	Dec	Jan	Feb
# CO2	24	22	21	21	22	22	22	23	22	19	20	22
# CO2 < 23	8	12	3	4	3	9	3	9	2	2	10	2
Pop. Mean	23	23	24	24	24	23	25	23	25	25	23	25
Std. Deviation	2.78	2.32	2.40	2.54	2.06	2.08	1.65	2.21	2.15	2.26	2.48	2.97
% CO2 < 23	33%	55%	14%	19%	14%	41%	14%	39%	9%	11%	50%	9%



	Mar	Apr	May	Jun	Jul	Aug	Sep	Oct	Nov	Dec	Jan	Feb
# CO2	24	22	21	21	22	22	22	23	22	19	20	22
# CO2 23 to 27	16	10	17	16	18	12	18	14	15	15	10	17
Pop. Mean	23	23	24	24	24	23	25	23	25	25	23	25
Std. Deviation	2.78	2.32	2.40	2.54	2.06	2.08	1.65	2.21	2.15	2.26	2.48	2.97
% CO2 23 to 27	67%	45%	81%	76%	82%	55%	82%	61%	68%	79%	50%	77%



	Mar	Apr	May	Jun	Jul	Aug	Sep	Oct	Nov	Dec	Jan	Feb
# CO2	24	22	21	21	22	22	22	23	22	19	20	22
# CO2 > 27	0	0	1	1	1	1	1	0	5	2	0	3
Pop. Mean	23	23	24	24	24	23	25	23	25	25	23	25
Std. Deviation	2.78	2.32	2.40	2.54	2.06	2.08	1.65	2.21	2.15	2.26	2.48	2.97
% CO2 > 27	0%	0%	5%	5%	5%	5%	5%	0%	23%	11%	0%	14%

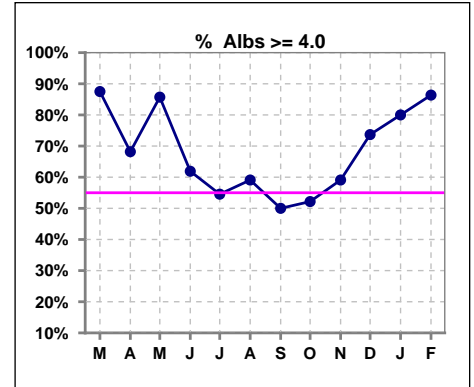


Methodology: a) All labs for 'Adequacy of Dialysis', 'Nutrition', 'Osteodystrophy', 'Anemia' and 'Diabetes' based on last value of month; b) BP's and #L processed are average of all values for month; c) Access data takes last access of month; d) Values for SGA and 'Infection Control' use most recent result.

*Albumin values use BCG method - as of July 2001

II. NUTRITION

	Mar	Apr	May	Jun	Jul	Aug	Sep	Oct	Nov	Dec	Jan	Feb
# Albumin	24	22	21	21	22	22	22	23	22	19	20	22
# Albumin >= 4.0	21	15	18	13	12	13	11	12	13	14	16	19
Pop. Mean	4.2	4.1	4.2	4.0	3.9	4.0	4.0	3.9	3.9	4.2	4.1	4.1
Std. Deviation	0.33	0.39	0.32	0.42	0.41	0.39	0.41	0.39	0.40	0.32	0.53	0.50
% Alb >= 4.0	88%	68%	86%	62%	55%	59%	50%	52%	59%	74%	80%	86%

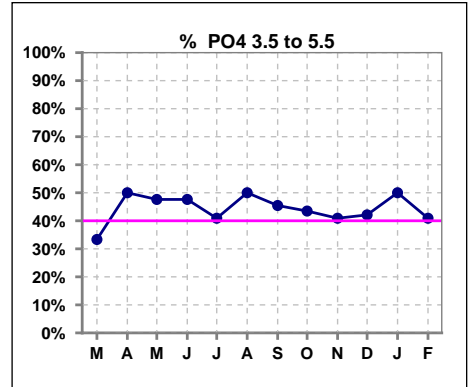


Methodology: a) All labs for 'Adequacy of Dialysis', 'Nutrition', 'Osteodystrophy', 'Anemia' and 'Diabetes' based on last value of month; b) BP's and #L processed are average of all values for month; c) Access data takes last access of month; d) Values for SGA and 'Infection Control' use most recent result.

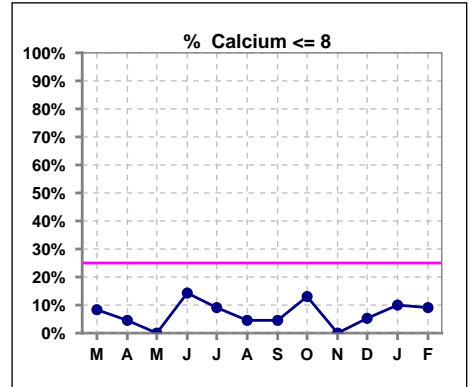
Lab methodology for PTH changed January 2012

III. OSTEODYSTROPHY

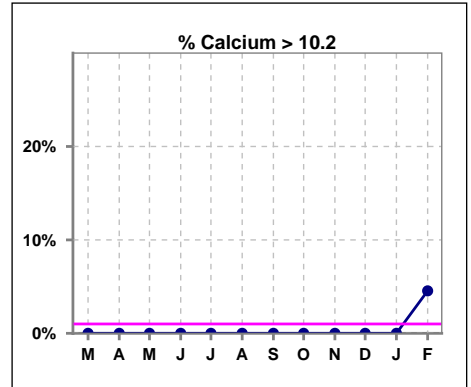
	Mar	Apr	May	Jun	Jul	Aug	Sep	Oct	Nov	Dec	Jan	Feb
# PO4	24	22	21	21	22	22	22	23	22	19	20	22
# PO4 3.5 to 5.5	8	11	10	10	9	11	10	10	9	8	10	9
Pop. Mean	6.5	6.0	6.0	6.2	6.1	5.8	5.9	5.9	5.9	6.1	5.6	6.1
Std. Deviation	2.44	2.01	2.36	2.30	1.56	1.69	1.71	2.21	2.11	2.34	2.08	2.16
% PO4 3.5 to 5.5	33%	50%	48%	48%	41%	50%	45%	43%	41%	42%	50%	41%



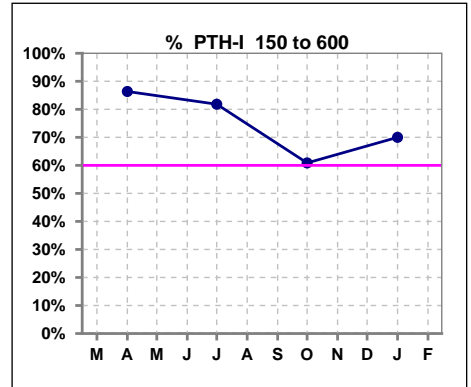
	Mar	Apr	May	Jun	Jul	Aug	Sep	Oct	Nov	Dec	Jan	Feb
# Calcium	24	22	21	21	22	22	22	23	22	19	20	22
# Calcium <= 8	2	1	0	3	2	1	1	3	0	1	2	2
Pop. Mean	9.0	9.1	9.1	8.9	8.9	9.1	9.0	8.8	9.2	9.0	9.1	9.2
Std. Deviation	0.65	0.59	0.47	0.64	0.56	0.57	0.64	0.61	0.59	0.58	0.70	0.67
% Calcium <= 8	8%	5%	0%	14%	9%	5%	5%	13%	0%	5%	10%	9%



	Mar	Apr	May	Jun	Jul	Aug	Sep	Oct	Nov	Dec	Jan	Feb
# Calcium	24	22	21	21	22	22	22	23	22	19	20	22
# Calcium > 10.2	0	0	0	0	0	0	0	0	0	0	0	1
Pop. Mean	9.0	9.1	9.1	8.9	8.9	9.1	9.0	8.8	9.2	9.0	9.1	9.2
Std. Deviation	0.65	0.59	0.47	0.64	0.56	0.57	0.64	0.61	0.59	0.58	0.70	0.67
% Calcium > 10.2	0%	0%	0%	0%	0%	0%	0%	0%	0%	0%	0%	5%



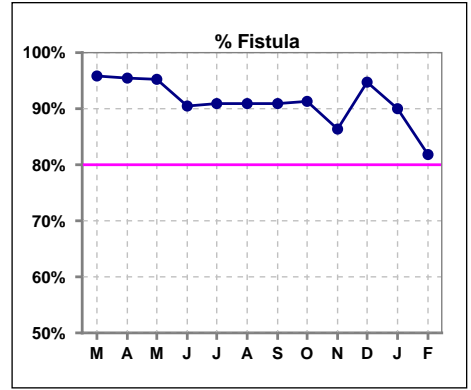
	Mar	Apr	May	Jun	Jul	Aug	Sep	Oct	Nov	Dec	Jan	Feb
# PTH-I		22			22			23			20	
# PTH-I 150 to 600		19			18			14			14	
Pop. Mean		329			428			536			416	
Std. Deviation		167			242			481			250	
% PTH-I 150 to 600		86%			82%			61%			70%	



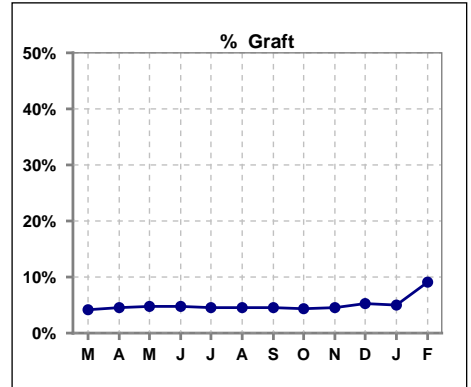
Methodology: a) All labs for 'Adequacy of Dialysis', 'Nutrition', 'Osteodystrophy', 'Anemia' and 'Diabetes' based on last value of month; b) BP's and #L processed are average of all values for month; c) Access data takes last access of month; d) Values for SGA and 'Infection Control' use most recent result.

IV. ACCESS

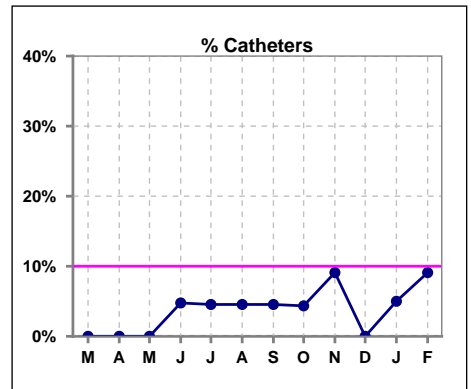
	Mar	Apr	May	Jun	Jul	Aug	Sep	Oct	Nov	Dec	Jan	Feb
# Access	24	22	21	21	22	22	22	23	22	19	20	22
# Fistula	23	21	20	19	20	20	20	21	19	18	18	18
% Fistula	96%	95%	95%	90%	91%	91%	91%	91%	86%	95%	90%	82%



	Mar	Apr	May	Jun	Jul	Aug	Sep	Oct	Nov	Dec	Jan	Feb
# Access	24	22	21	21	22	22	22	23	22	19	20	22
# Graft	1	1	1	1	1	1	1	1	1	1	1	2
% Graft	4%	5%	5%	5%	5%	5%	5%	4%	5%	5%	5%	9%



	Mar	Apr	May	Jun	Jul	Aug	Sep	Oct	Nov	Dec	Jan	Feb
# Access	24	22	21	21	22	22	22	23	22	19	20	22
# Catheters	0	0	0	1	1	1	1	1	2	0	1	2
% Catheters	0%	0%	0%	5%	5%	5%	5%	4%	9%	0%	5%	9%



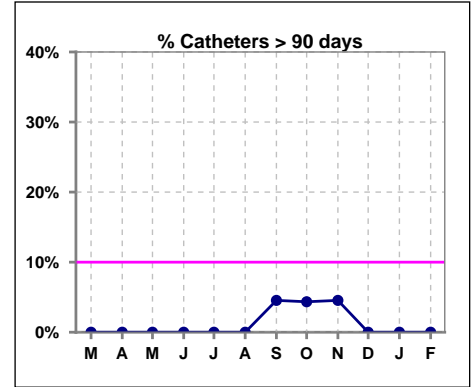
Methodology: a) All labs for 'Adequacy of Dialysis', 'Nutrition', 'Osteodystrophy', 'Anemia' and 'Diabetes' based on last value of month; b) BP's and #L processed are average of all values for month; c) Access data takes last access of month; d) Values for SGA and 'Infection Control' use most recent result.

IV. ACCESS - CONT.

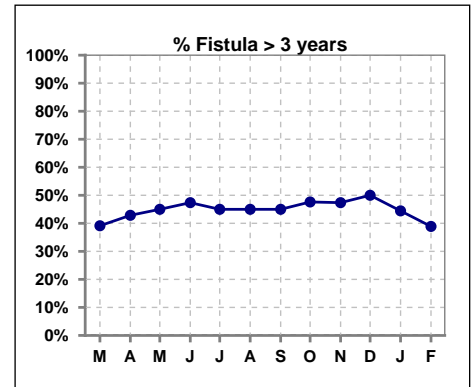
Catheters > 90 days

	Mar	Apr	May	Jun	Jul	Aug	Sep	Oct	Nov	Dec	Jan	Feb
# Access	24	22	21	21	22	22	22	23	22	19	20	22
# Catheters	0	0	0	0	0	0	1	1	1	0	0	0
% Catheters	0%	0%	0%	0%	0%	0%	5%	4%	5%	0%	0%	0%

Definition: Catheter in use on last treatment of the month



	Mar	Apr	May	Jun	Jul	Aug	Sep	Oct	Nov	Dec	Jan	Feb
# Fistula	23	21	20	19	20	20	20	21	19	18	18	18
# Fistula > 3 yrs	9	9	9	9	9	9	9	10	9	9	8	7
% Fistula > 3 yrs	39%	43%	45%	47%	45%	45%	45%	48%	47%	50%	44%	39%

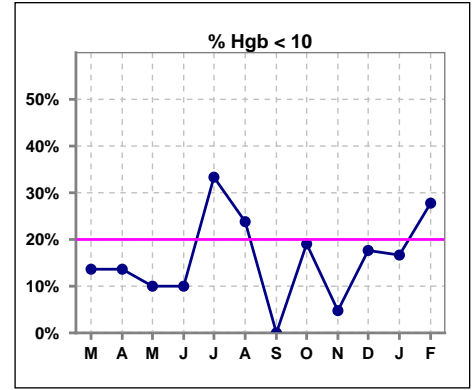


Methodology: a) All labs for 'Adequacy of Dialysis', 'Nutrition', 'Osteodystrophy', 'Anemia' and 'Diabetes' based on last value of month; b) BP's and #L processed are average of all values for month; c) Access data takes last access of month; d) Values for SGA and 'Infection Control' use most recent result.

V. ANEMIA

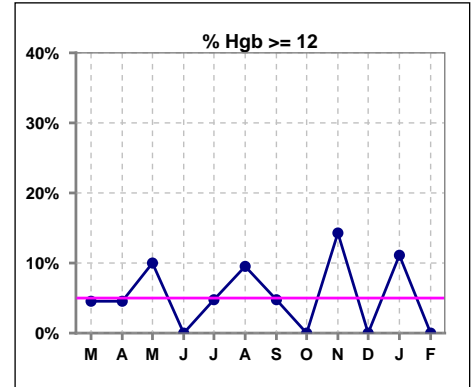
	Mar	Apr	May	Jun	Jul	Aug	Sep	Oct	Nov	Dec	Jan	Feb
# Hgb	22	22	20	20	21	21	21	21	21	17	18	18
# Hgb < 10	3	3	2	2	7	5	0	4	1	3	3	5
Pop. Mean	11.0	11.0	11.4	11.0	10.3	10.8	11.1	10.9	11.1	10.7	10.7	10.4
Std. Deviation	0.8	1.2	1.1	0.8	1.1	1.1	0.6	1.0	0.9	0.8	1.3	1.1
% Hgb < 10	14%	14%	10%	10%	33%	24%	0%	19%	5%	18%	17%	28%

Note: Excludes patients who received no ESA in month.



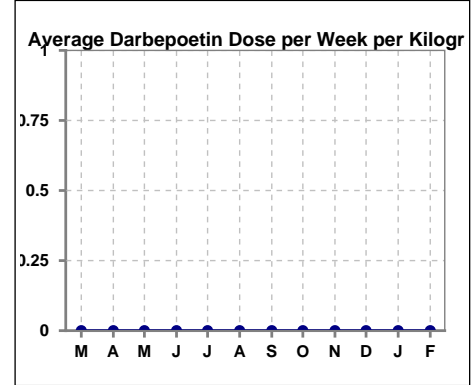
	Mar	Apr	May	Jun	Jul	Aug	Sep	Oct	Nov	Dec	Jan	Feb
# Hgb	22	22	20	20	21	21	21	21	21	17	18	18
# Hgb >= 12	1	1	2	0	1	2	1	0	3	0	2	0
Pop. Mean	11.0	11.0	11.4	11.0	10.3	10.8	11.1	10.9	11.1	10.7	10.7	10.4
Std. Deviation	0.8	1.2	1.1	0.8	1.1	1.1	0.6	1.0	0.9	0.8	1.3	1.1
% Hgb >= 12	5%	5%	10%	0%	5%	10%	5%	0%	14%	0%	11%	0%

Note: Excludes patients who received no ESA in month.



Average Darbepoetin Dose per Week per Kilogram

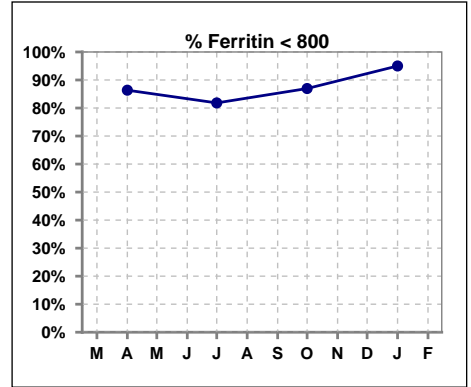
	Mar	Apr	May	Jun	Jul	Aug	Sep	Oct	Nov	Dec	Jan	Feb
# Average Darbepoetin	0	0	0	0	0	0	0	0	0	0	0	0



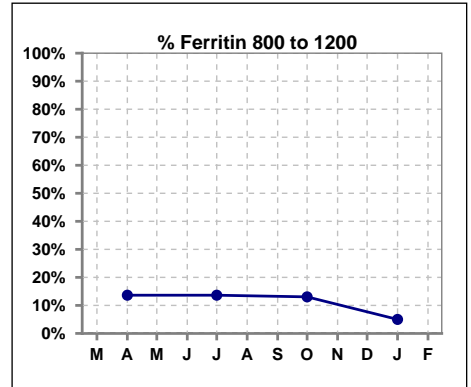
V. ANEMIA - CONT.

Iron Profile

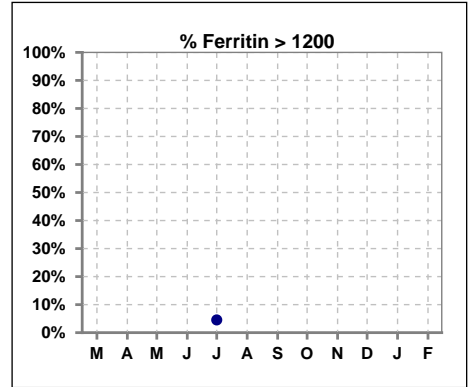
	Mar	Apr	May	Jun	Jul	Aug	Sep	Oct	Nov	Dec	Jan	Feb
# Ferritin		22			22			23			20	
# Ferritin < 800		19			18			20			19	
Pop. Mean		454			489			457			414	
Std. Deviation		281			353			312			266	
% Ferritin < 800		86%			82%			87%			95%	



	Mar	Apr	May	Jun	Jul	Aug	Sep	Oct	Nov	Dec	Jan	Feb
# Ferritin		22			22			23			20	
# Ferritin 800 to 1200		3			3			3			1	
Pop. Mean		454			489			457			414	
Std. Deviation		281			353			312			266	
% Ferritin 800 to 1200		14%			14%			13%			5%	



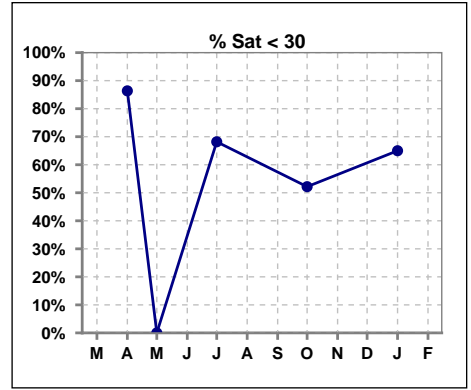
	Mar	Apr	May	Jun	Jul	Aug	Sep	Oct	Nov	Dec	Jan	Feb
# Ferritin		22			22			23			20	
# Ferritin > 1200					1							
Pop. Mean		454			489			457			414	
Std. Deviation		281			353			312			266	
% Ferritin > 1200					5%							



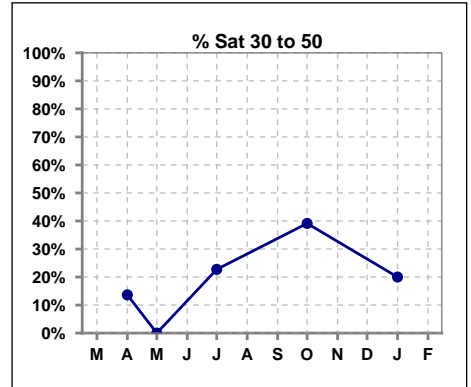
Methodology: a) All labs for 'Adequacy of Dialysis', 'Nutrition', 'Osteodystrophy', 'Anemia' and 'Diabetes' based on last value of month; b) BP's and #L processed are average of all values for month; c) Access data takes last access of month; d) Values for SGA and 'Infection Control' use most recent result.

V. ANEMIA - CONT.

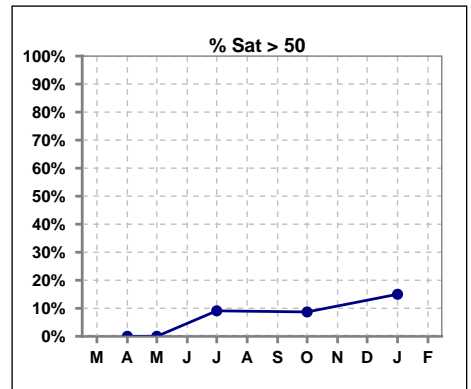
	Mar	Apr	May	Jun	Jul	Aug	Sep	Oct	Nov	Dec	Jan	Feb
# % Sat		22	0		22			23			20	
# % Sat < 30		19	0		15			12			13	
Pop. Mean		23	0		31			31			30	
Std. Deviation		8	0		14			14			18	
% % Sat < 30		86%	0%		68%			52%			65%	



	Mar	Apr	May	Jun	Jul	Aug	Sep	Oct	Nov	Dec	Jan	Feb
# % Sat		22	0		22			23			20	
# % Sat 30 to 50		3	0		5			9			4	
Pop. Mean		23	0		31			31			30	
Std. Deviation		8	0		14			14			18	
% % Sat 30 to 50		14%	0%		23%			39%			20%	



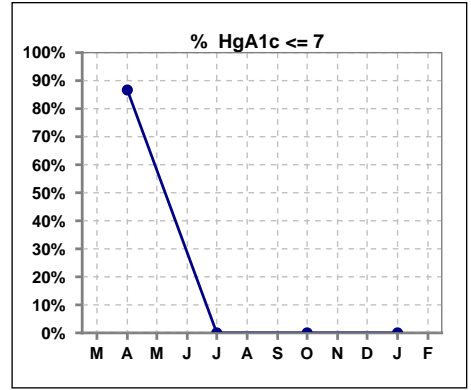
	Mar	Apr	May	Jun	Jul	Aug	Sep	Oct	Nov	Dec	Jan	Feb
# % Sat		22	0		22			23			20	
# % Sat > 50		0	0		2			2			3	
Pop. Mean		23	0		31			31			30	
Std. Deviation		8	0		14			14			18	
% % Sat > 50		0%	0%		9%			9%			15%	



Methodology: a) All labs for 'Adequacy of Dialysis', 'Nutrition', 'Osteodystrophy', 'Anemia' and 'Diabetes' based on last value of month; b) BP's and #L processed are average of all values for month; c) Access data takes last access of month; d) Values for SGA and 'Infection Control' use most recent result.

VI. Diabetes

	Mar	Apr	May	Jun	Jul	Aug	Sep	Oct	Nov	Dec	Jan	Feb
# HgA1c		15			0			0			0	
# HgA1c <= 7		13			0			0			0	
Pop. Mean		6.3			0			0			0	
Std. Deviation		1.95			0			0			0	
% HgA1c <= 7		87%			0%			0%			0%	

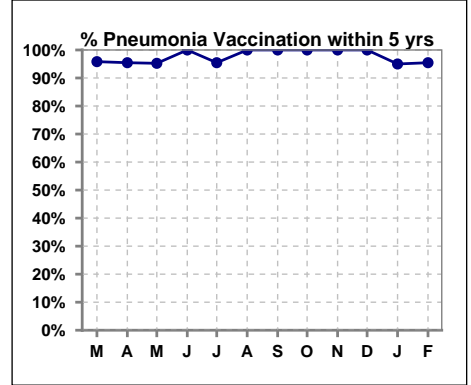


Methodology: a) All labs for 'Adequacy of Dialysis', 'Nutrition', 'Osteodystrophy', 'Anemia' and 'Diabetes' based on last value of month; b) BP's and #L processed are average of all values for month; c) Access data takes last access of month; d) Values for SGA and 'Infection Control' use most recent result.

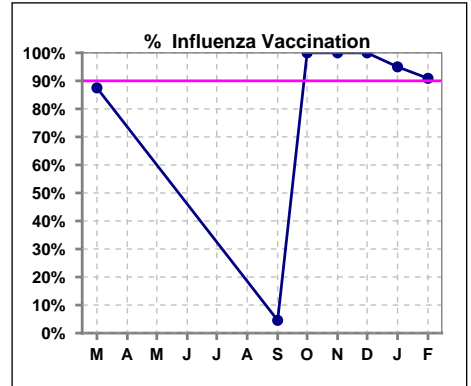
VII. Infection Control

Pneumonia vaccination within the past five years

	Mar	Apr	May	Jun	Jul	Aug	Sep	Oct	Nov	Dec	Jan	Feb
# Patient	24	22	21	21	22	22	22	23	22	19	20	22
# Pneumonia	23	21	20	21	21	22	22	23	22	19	19	21
% Pneumonia	96%	95%	95%	100%	95%	100%	100%	100%	100%	100%	95%	95%



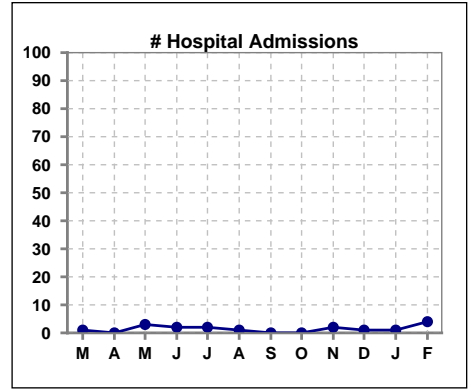
	Mar	Apr	May	Jun	Jul	Aug	Sep	Oct	Nov	Dec	Jan	Feb
# Patient	24						22	23	22	19	20	22
# Influenza	21						1	23	22	19	19	20
% Influenza	88%						5%	100%	100%	100%	95%	91%



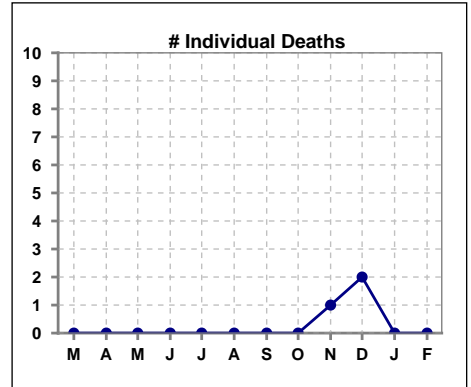
Methodology: a) All labs for 'Adequacy of Dialysis', 'Nutrition', 'Osteodystrophy', 'Anemia' and 'Diabetes' based on last value of month; b) BP's and #L processed are average of all values for month; c) Access data takes last access of month; d) Values for SGA and 'Infection Control' use most recent result.

VIII. Outcome measures

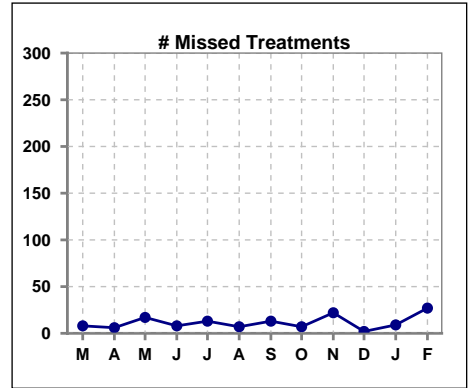
	Mar	Apr	May	Jun	Jul	Aug	Sep	Oct	Nov	Dec	Jan	Feb
# Patient	24	22	21	21	22	22	22	23	22	19	20	22
# Hospital Admissions	1	0	3	2	2	1	0	0	2	1	1	4



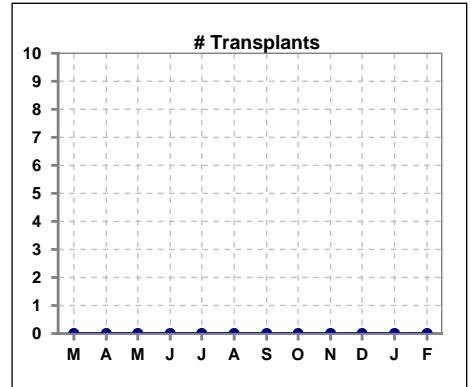
	Mar	Apr	May	Jun	Jul	Aug	Sep	Oct	Nov	Dec	Jan	Feb
# Patient	24	22	21	21	22	22	22	23	22	19	20	22
# Individual Deaths	0	0	0	0	0	0	0	0	1	2	0	0



	Mar	Apr	May	Jun	Jul	Aug	Sep	Oct	Nov	Dec	Jan	Feb
# Patient	24	22	21	21	22	22	22	23	22	19	20	22
# Missed Treatments	8	6	17	8	13	7	13	7	22	2	9	27



	Mar	Apr	May	Jun	Jul	Aug	Sep	Oct	Nov	Dec	Jan	Feb
# Patient	24	22	21	21	22	22	22	23	22	19	20	22
# Transplants	0	0	0	0	0	0	0	0	0	0	0	0



Methodology: a) All labs for 'Adequacy of Dialysis', 'Nutrition', 'Osteodystrophy', 'Anemia' and 'Diabetes' based on last value of month; b) BP's and #L processed are average of all values for month; c) Access data takes last access of month; d) Values for SGA and 'Infection Control' use most recent result.