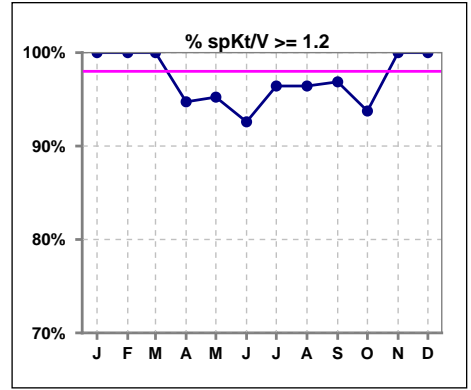
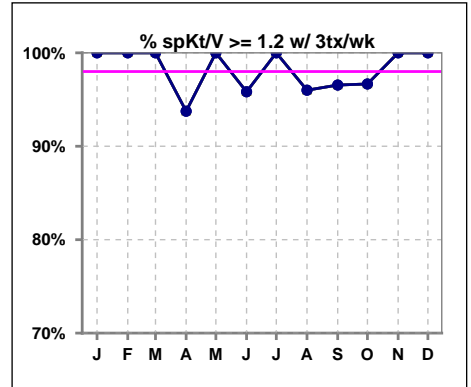


I. ADEQUACY OF DIALYSIS

	Jan	Feb	Mar	Apr	May	Jun	Jul	Aug	Sep	Oct	Nov	Dec
# spKt/V	14	14	16	19	21	27	28	28	32	32	33	33
# spKt/V >= 1.2	14	14	16	18	20	25	27	27	31	30	33	33
Pop. Mean	1.53	1.54	1.66	1.53	1.51	1.53	1.47	1.54	1.53	1.50	1.53	1.55
Std. Deviation	0.22	0.18	0.37	0.18	0.23	0.28	0.20	0.28	0.22	0.22	0.27	0.22
% spKt/V >= 1.2	100%	100%	100%	95%	95%	93%	96%	96%	97%	94%	100%	100%



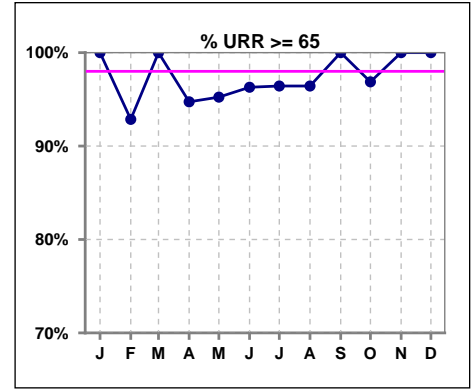
	Jan	Feb	Mar	Apr	May	Jun	Jul	Aug	Sep	Oct	Nov	Dec
# spKt/V w/ 3tx/wk	11	12	15	16	18	24	24	25	29	30	30	31
# spKt/V >= 1.2 w/3tx/wk	11	12	15	15	18	23	24	24	28	29	30	31
Pop. Mean	1.58	1.56	1.68	1.55	1.54	1.54	1.49	1.57	1.54	1.51	1.54	1.54
Std. Deviation	0.23	0.19	0.37	0.17	0.22	0.28	0.18	0.27	0.22	0.21	0.27	0.22
% >= 1.2 w/3tx/wk	100%	100%	100%	94%	100%	96%	100%	96%	97%	97%	100%	100%



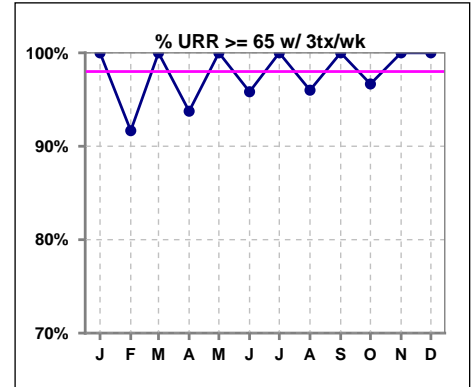
Methodology: a) All labs for 'Adequacy of Dialysis', 'Nutrition', 'Osteodystrophy', 'Anemia' and 'Diabetes' based on last value of month; b) BP's and #L processed are average of all values for month; c) Access data takes last access of month; d) Values for SGA and 'Infection Control' use most recent result.

I. ADEQUACY OF DIALYSIS - CONT.

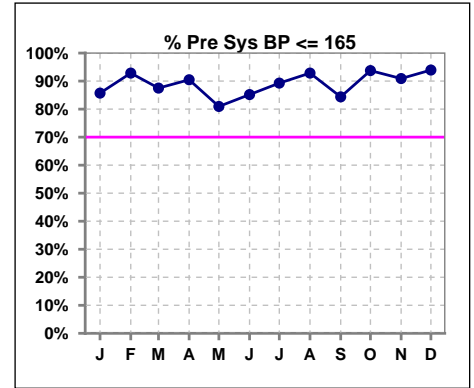
	Jan	Feb	Mar	Apr	May	Jun	Jul	Aug	Sep	Oct	Nov	Dec
# URR	14	14	16	19	21	27	28	28	32	32	33	33
# URR >= 65	14	13	16	18	20	26	27	27	32	31	33	33
Pop. Mean	74	74	76	74	73	73	72	73	73	72	73	74
Std. Deviation	4.45	3.93	6.20	4.43	5.21	6.84	5.06	5.34	4.49	4.69	5.25	4.62
% URR >= 65	100%	93%	100%	95%	95%	96%	96%	96%	100%	97%	100%	100%



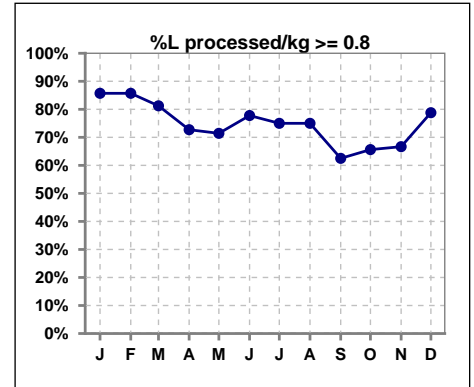
	Jan	Feb	Mar	Apr	May	Jun	Jul	Aug	Sep	Oct	Nov	Dec
# URR w/ 3tx/wk	11	12	15	16	18	24	24	25	29	30	30	31
# URR>=65 w/ 3tx/wk	11	11	15	15	18	23	24	24	29	29	30	31
Pop. Mean	74	74	76	74	73	73	72	74	73	73	73	74
Std. Deviation	4.67	4.16	6.29	3.95	4.55	7.02	4.05	5.08	4.55	4.52	5.41	4.70
% URR>=65 w/ 3tx/wk	100%	92%	100%	94%	100%	96%	100%	96%	100%	97%	100%	100%



	Jan	Feb	Mar	Apr	May	Jun	Jul	Aug	Sep	Oct	Nov	Dec
# Pre Sys BP	14	14	16	21	21	27	28	28	32	32	33	33
# Pre Sys BP <= 165	12	13	14	19	18	23	25	26	27	30	30	31
Pop. Mean	141	140	143	138	143	142	140	146	147	144	143	141
Std. Deviation	21.1	18.7	21.8	21.7	18.7	17.9	17.6	15.7	16.0	16.0	15.4	16.8
% Pre Sys BP <= 165	86%	93%	88%	90%	81%	85%	89%	93%	84%	94%	91%	94%



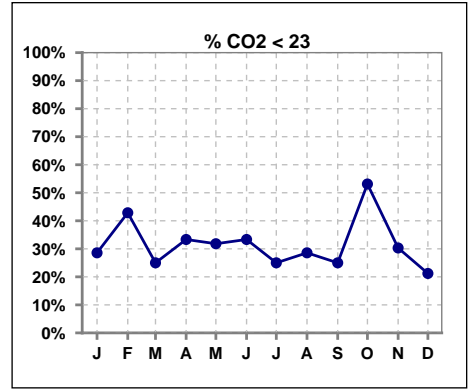
	Jan	Feb	Mar	Apr	May	Jun	Jul	Aug	Sep	Oct	Nov	Dec
# L processed/kg	14	14	16	22	21	27	28	28	32	32	33	33
# L processed/kg >= 0.8	12	12	13	16	15	21	21	21	20	21	22	26
Pop. Mean	1	1	1	1	1	1	1	1	1	1	1	1
Std. Deviation	0.3	0.3	0.3	0.2	0.3	0.3	0.2	0.3	0.2	0.3	0.3	0.2
% L processed/kg >= 0.8	86%	86%	81%	73%	71%	78%	75%	75%	63%	66%	67%	79%



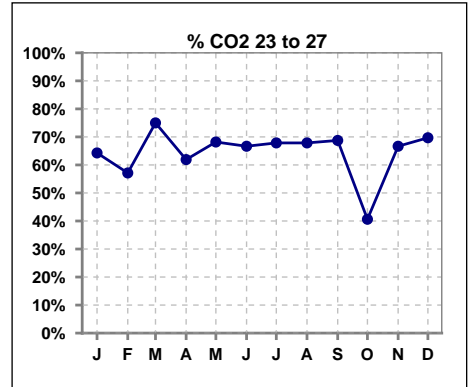
Methodology: a) All labs for 'Adequacy of Dialysis', 'Nutrition', 'Osteodystrophy', 'Anemia' and 'Diabetes' based on last value of month; b) BP's and #L processed are average of all values for month; c) Access data takes last access of month; d) Values for SGA and 'Infection Control' use most recent result.

I. ADEQUACY OF DIALYSIS - CONT.

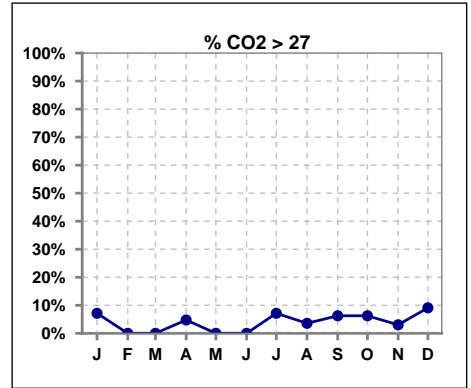
	Jan	Feb	Mar	Apr	May	Jun	Jul	Aug	Sep	Oct	Nov	Dec
# CO2	14	14	16	21	22	27	28	28	32	32	33	33
# CO2 < 23	4	6	4	7	7	9	7	8	8	17	10	7
Pop. Mean	24	24	24	24	24	23	24	24	24	23	23	24
Std. Deviation	3.48	2.09	2.71	3.16	1.96	2.15	2.96	2.00	2.17	2.57	2.53	3.11
% CO2 < 23	29%	43%	25%	33%	32%	33%	25%	29%	25%	53%	30%	21%



	Jan	Feb	Mar	Apr	May	Jun	Jul	Aug	Sep	Oct	Nov	Dec
# CO2	14	14	16	21	22	27	28	28	32	32	33	33
# CO2 23 to 27	9	8	12	13	15	18	19	19	22	13	22	23
Pop. Mean	24	24	24	24	24	23	24	24	24	23	23	24
Std. Deviation	3.48	2.09	2.71	3.16	1.96	2.15	2.96	2.00	2.17	2.57	2.53	3.11
% CO2 23 to 27	64%	57%	75%	62%	68%	67%	68%	68%	69%	41%	67%	70%



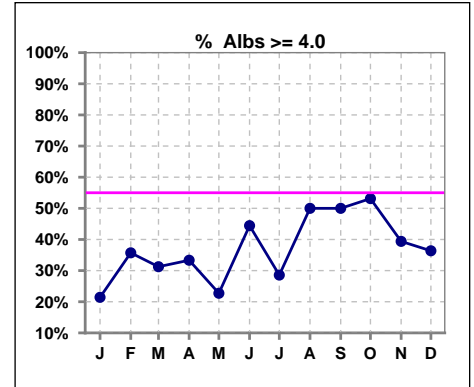
	Jan	Feb	Mar	Apr	May	Jun	Jul	Aug	Sep	Oct	Nov	Dec
# CO2	14	14	16	21	22	27	28	28	32	32	33	33
# CO2 > 27	1	0	0	1	0	0	2	1	2	2	1	3
Pop. Mean	24	24	24	24	24	23	24	24	24	23	23	24
Std. Deviation	3.48	2.09	2.71	3.16	1.96	2.15	2.96	2.00	2.17	2.57	2.53	3.11
% CO2 > 27	7%	0%	0%	5%	0%	0%	7%	4%	6%	6%	3%	9%



*Albumin values use BCG method - as of July 2001

II. NUTRITION

	Jan	Feb	Mar	Apr	May	Jun	Jul	Aug	Sep	Oct	Nov	Dec
# Albumin	14	14	16	21	22	27	28	28	32	32	33	33
# Albumin >= 4.0	3	5	5	7	5	12	8	14	16	17	13	12
Pop. Mean	3.8	3.8	3.7	3.7	3.7	3.8	3.7	3.9	3.9	3.9	3.9	3.8
Std. Deviation	0.37	0.40	0.38	0.47	0.34	0.44	0.38	0.40	0.40	0.41	0.39	0.40
% Alb >= 4.0	21%	36%	31%	33%	23%	44%	29%	50%	50%	53%	39%	36%

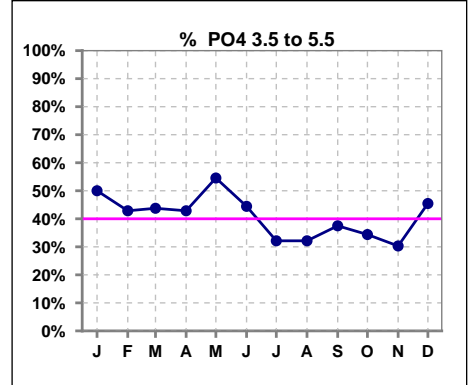


Methodology: a) All labs for 'Adequacy of Dialysis', 'Nutrition', 'Osteodystrophy', 'Anemia' and 'Diabetes' based on last value of month; b) BP's and #L processed are average of all values for month; c) Access data takes last access of month; d) Values for SGA and 'Infection Control' use most recent result.

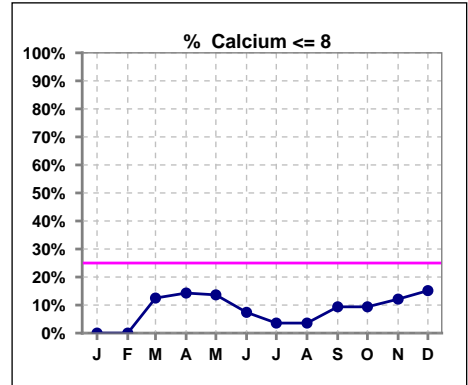
Lab methodology for PTH changed January 2012

III. OSTEODYSTROPHY

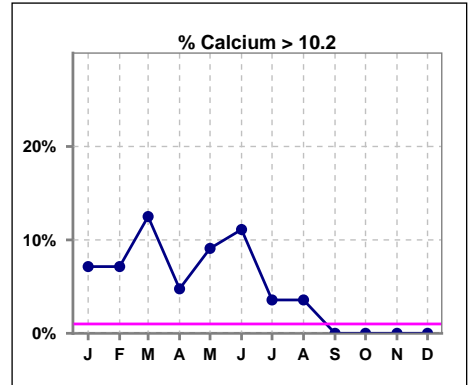
	Jan	Feb	Mar	Apr	May	Jun	Jul	Aug	Sep	Oct	Nov	Dec
# PO4	14	14	16	21	22	27	28	28	32	32	33	33
# PO4 3.5 to 5.5	7	6	7	9	12	12	9	9	12	11	10	15
Pop. Mean	5.5	5.9	6.1	5.8	5.9	6.1	5.7	6.1	6.4	6.0	6.5	6.5
Std. Deviation	1.82	2.25	2.26	2.66	1.70	1.82	1.38	1.67	2.09	1.87	2.04	2.19
% PO4 3.5 to 5.5	50%	43%	44%	43%	55%	44%	32%	32%	38%	34%	30%	45%



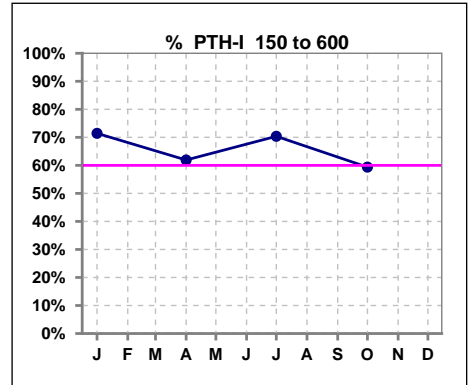
	Jan	Feb	Mar	Apr	May	Jun	Jul	Aug	Sep	Oct	Nov	Dec
# Calcium	14	14	16	21	22	27	28	28	32	32	33	33
# Calcium <= 8	0	0	2	3	3	2	1	1	3	3	4	5
Pop. Mean	9.0	9.2	9.2	9.1	9.2	9.3	9.2	9.3	9.1	9.1	9.2	9.0
Std. Deviation	0.76	0.65	0.79	1.22	0.89	0.80	0.56	0.66	0.62	0.67	0.70	0.74
% Calcium <= 8	0%	0%	13%	14%	14%	7%	4%	4%	9%	9%	12%	15%



	Jan	Feb	Mar	Apr	May	Jun	Jul	Aug	Sep	Oct	Nov	Dec
# Calcium	14	14	16	21	22	27	28	28	32	32	33	33
# Calcium > 10.2	1	1	2	1	2	3	1	1	0	0	0	0
Pop. Mean	9.0	9.2	9.2	9.1	9.2	9.3	9.2	9.3	9.1	9.1	9.2	9.0
Std. Deviation	0.76	0.65	0.79	1.22	0.89	0.80	0.56	0.66	0.62	0.67	0.70	0.74
% Calcium > 10.2	7%	7%	13%	5%	9%	11%	4%	4%	0%	0%	0%	0%



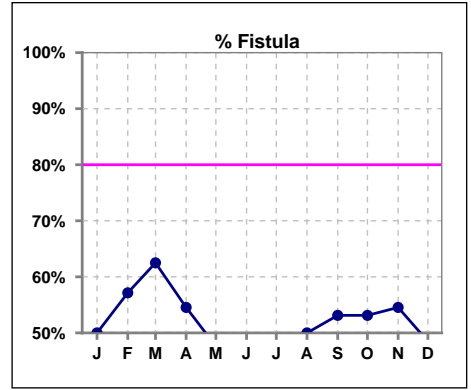
	Jan	Feb	Mar	Apr	May	Jun	Jul	Aug	Sep	Oct	Nov	Dec
# PTH-I	14			21			27			32		
# PTH-I 150 to 600	10			13			19			19		
Pop. Mean	357			379			327			470		
Std. Deviation	214			313			224			355		
% PTH-I 150 to 600	71%			62%			70%			59%		



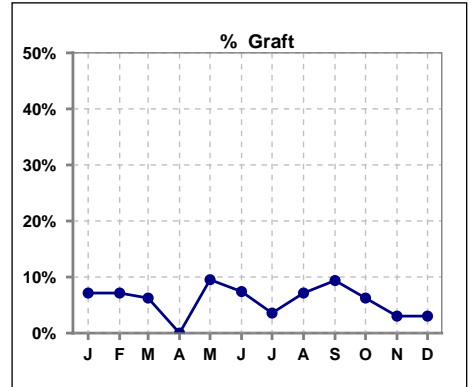
Methodology: a) All labs for 'Adequacy of Dialysis', 'Nutrition', 'Osteodystrophy', 'Anemia' and 'Diabetes' based on last value of month; b) BP's and #L processed are average of all values for month; c) Access data takes last access of month; d) Values for SGA and 'Infection Control' use most recent result.

IV. ACCESS

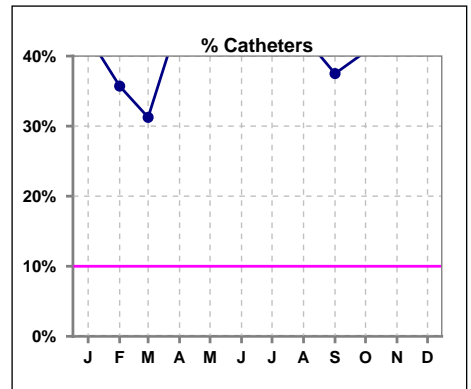
	Jan	Feb	Mar	Apr	May	Jun	Jul	Aug	Sep	Oct	Nov	Dec
# Access	14	14	16	22	21	27	28	28	32	32	33	33
# Fistula	7	8	10	12	10	13	12	14	17	17	18	16
% Fistula	50%	57%	63%	55%	48%	48%	43%	50%	53%	53%	55%	48%



	Jan	Feb	Mar	Apr	May	Jun	Jul	Aug	Sep	Oct	Nov	Dec
# Access	14	14	16	22	21	27	28	28	32	32	33	33
# Graft	1	1	1	0	2	2	1	2	3	2	1	1
% Graft	7%	7%	6%	0%	10%	7%	4%	7%	9%	6%	3%	3%



	Jan	Feb	Mar	Apr	May	Jun	Jul	Aug	Sep	Oct	Nov	Dec
# Access	14	14	16	22	21	27	28	28	32	32	33	33
# Catheters	6	5	5	10	9	12	15	12	12	13	14	16
% Catheters	43%	36%	31%	45%	43%	44%	54%	43%	38%	41%	42%	48%



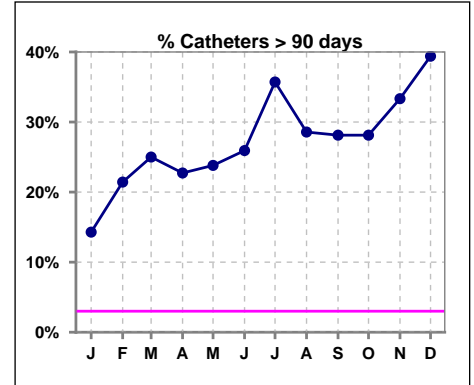
Methodology: a) All labs for 'Adequacy of Dialysis', 'Nutrition', 'Osteodystrophy', 'Anemia' and 'Diabetes' based on last value of month; b) BP's and #L processed are average of all values for month; c) Access data takes last access of month; d) Values for SGA and 'Infection Control' use most recent result.

IV. ACCESS - CONT.

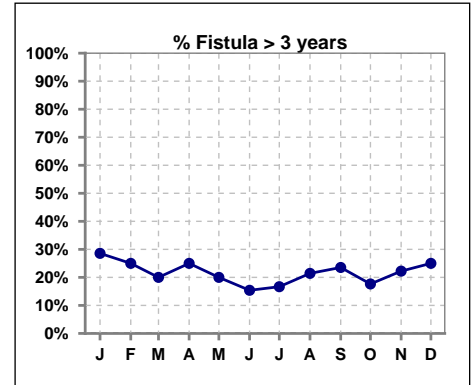
Catheters > 90 days

	Jan	Feb	Mar	Apr	May	Jun	Jul	Aug	Sep	Oct	Nov	Dec
# Access	14	14	16	22	21	27	28	28	32	32	33	33
# Catheters	2	3	4	5	5	7	10	8	9	9	11	13
% Catheters	14%	21%	25%	23%	24%	26%	36%	29%	28%	28%	33%	39%

Definition: Catheter in use on last treatment of the month



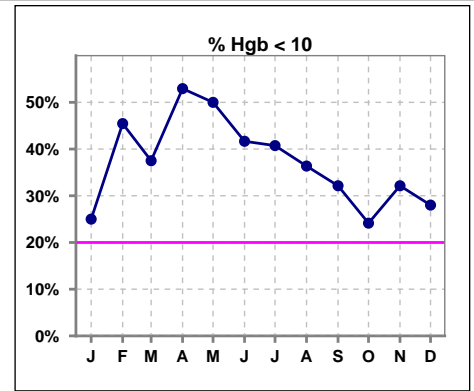
	Jan	Feb	Mar	Apr	May	Jun	Jul	Aug	Sep	Oct	Nov	Dec
# Fistula	7	8	10	12	10	13	12	14	17	17	18	16
# Fistula > 3 yrs	2	2	2	3	2	2	2	3	4	3	4	4
% Fistula > 3 yrs	29%	25%	20%	25%	20%	15%	17%	21%	24%	18%	22%	25%



V. ANEMIA

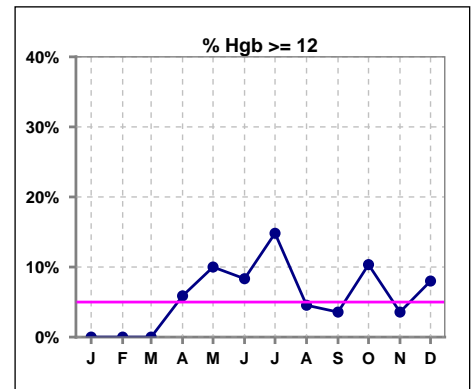
	Jan	Feb	Mar	Apr	May	Jun	Jul	Aug	Sep	Oct	Nov	Dec
# Hgb	12	11	16	17	20	24	27	22	28	29	28	25
# Hgb < 10	3	5	6	9	10	10	11	8	9	7	9	7
Pop. Mean	10.5	10.2	10.1	10.0	10.3	10.3	10.5	10.3	10.3	10.5	10.4	10.5
Std. Deviation	1.3	1.4	1.1	1.3	1.2	1.4	1.5	1.2	1.3	1.4	1.3	1.4
% Hgb < 10	25%	45%	38%	53%	50%	42%	41%	36%	32%	24%	32%	28%

Note: Excludes patients who received no ESA in month.



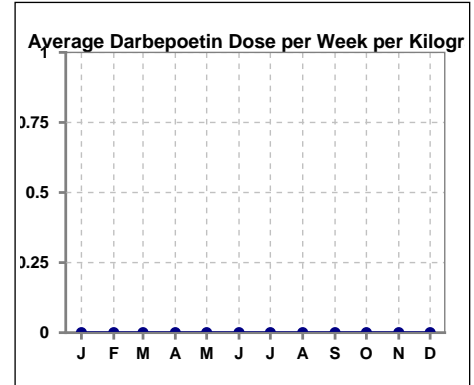
	Jan	Feb	Mar	Apr	May	Jun	Jul	Aug	Sep	Oct	Nov	Dec
# Hgb	12	11	16	17	20	24	27	22	28	29	28	25
# Hgb >= 12	0	0	0	1	2	2	4	1	1	3	1	2
Pop. Mean	10.5	10.2	10.1	10.0	10.3	10.3	10.5	10.3	10.3	10.5	10.4	10.5
Std. Deviation	1.3	1.4	1.1	1.3	1.2	1.4	1.5	1.2	1.3	1.4	1.3	1.4
% Hgb >= 12	0%	0%	0%	6%	10%	8%	15%	5%	4%	10%	4%	8%

Note: Excludes patients who received no ESA in month.



Average Darbepoetin Dose per Week per Kilogram

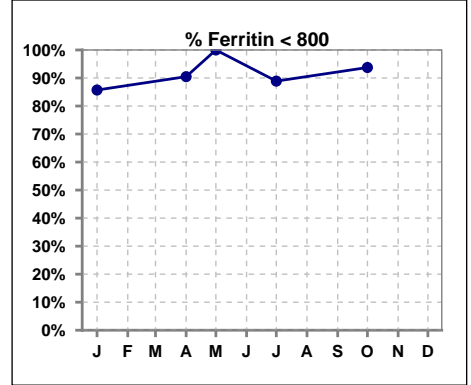
	Jan	Feb	Mar	Apr	May	Jun	Jul	Aug	Sep	Oct	Nov	Dec
# Average Darbepoetin	0	0	0	0	0	0	0	0	0	0	0	0



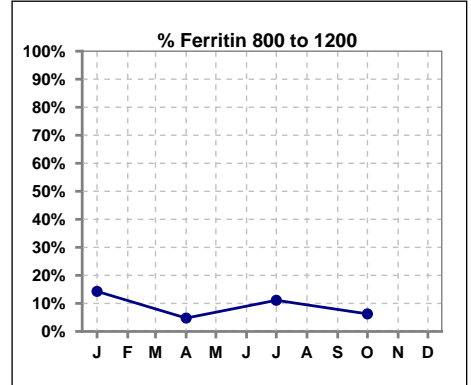
V. ANEMIA - CONT.

Iron Profile

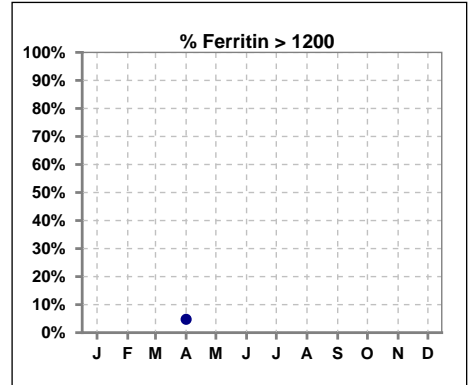
	Jan	Feb	Mar	Apr	May	Jun	Jul	Aug	Sep	Oct	Nov	Dec
# Ferritin	14			21	3		27			32		
# Ferritin < 800	12			19	3		24			30		
Pop. Mean	459			515	301		443			444		
Std. Deviation	277			336	289		266			288		
% Ferritin < 800	86%			90%	100%		89%			94%		



	Jan	Feb	Mar	Apr	May	Jun	Jul	Aug	Sep	Oct	Nov	Dec
# Ferritin	14			21	3		27			32		
# Ferritin 800 to 1200	2			1			3			2		
Pop. Mean	459			515	301		443			444		
Std. Deviation	277			336	289		266			288		
% Ferritin 800 to 1200	14%			5%			11%			6%		



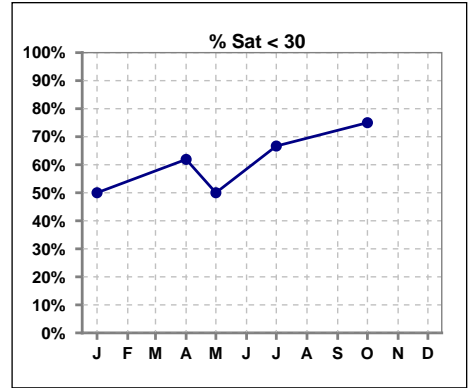
	Jan	Feb	Mar	Apr	May	Jun	Jul	Aug	Sep	Oct	Nov	Dec
# Ferritin	14			21	3		27			32		
# Ferritin > 1200				1								
Pop. Mean	459			515	301		443			444		
Std. Deviation	277			336	289		266			288		
% Ferritin > 1200				5%								



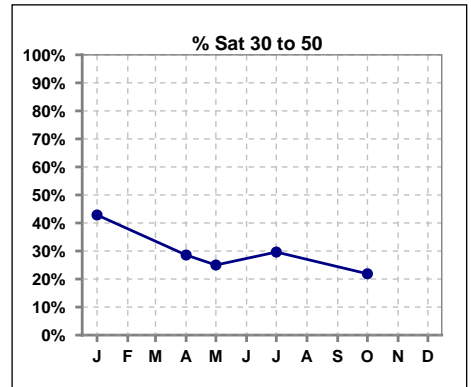
Methodology: a) All labs for 'Adequacy of Dialysis', 'Nutrition', 'Osteodystrophy', 'Anemia' and 'Diabetes' based on last value of month; b) BP's and #L processed are average of all values for month; c) Access data takes last access of month; d) Values for SGA and 'Infection Control' use most recent result.

V. ANEMIA - CONT.

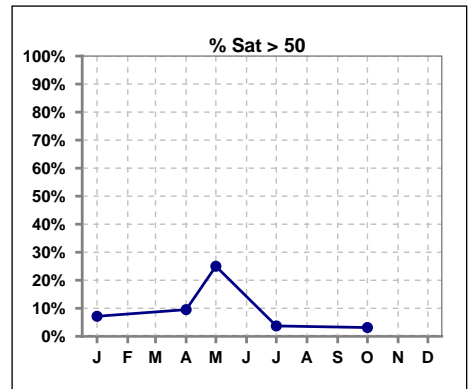
	Jan	Feb	Mar	Apr	May	Jun	Jul	Aug	Sep	Oct	Nov	Dec
# % Sat	14			21	4		27			32		
# % Sat < 30	7			13	2		18			24		
Pop. Mean	30			33	28		26			25		
Std. Deviation	14			20	20		17			11		
% % Sat < 30	50%			62%	50%		67%			75%		



	Jan	Feb	Mar	Apr	May	Jun	Jul	Aug	Sep	Oct	Nov	Dec
# % Sat	14			21	4		27			32		
# % Sat 30 to 50	6			6	1		8			7		
Pop. Mean	30			33	28		26			25		
Std. Deviation	14			20	20		17			11		
% % Sat 30 to 50	43%			29%	25%		30%			22%		

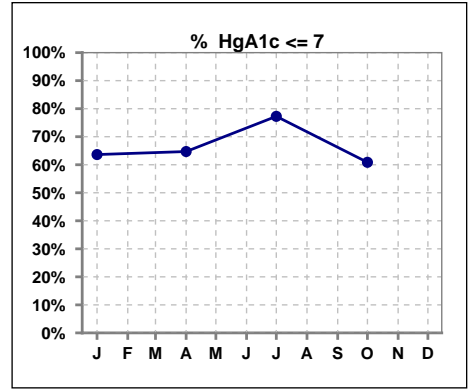


	Jan	Feb	Mar	Apr	May	Jun	Jul	Aug	Sep	Oct	Nov	Dec
# % Sat	14			21	4		27			32		
# % Sat > 50	1			2	1		1			1		
Pop. Mean	30			33	28		26			25		
Std. Deviation	14			20	20		17			11		
% % Sat > 50	7%			10%	25%		4%			3%		



VI. Diabetes

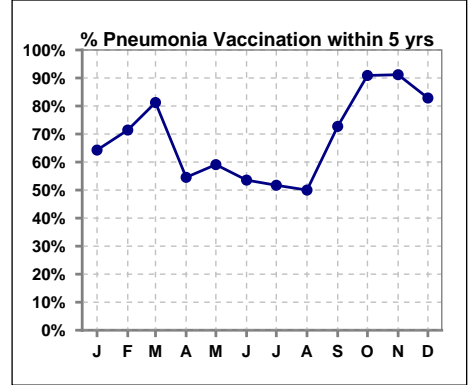
	Jan	Feb	Mar	Apr	May	Jun	Jul	Aug	Sep	Oct	Nov	Dec
# HgA1c	11			17			22			23		
# HgA1c <= 7	7			11			17			14		
Pop. Mean	6.5			6.7			6.5			6.6		
Std. Deviation	1.25			1.90			1.49			1.43		
% HgA1c <= 7	64%			65%			77%			61%		



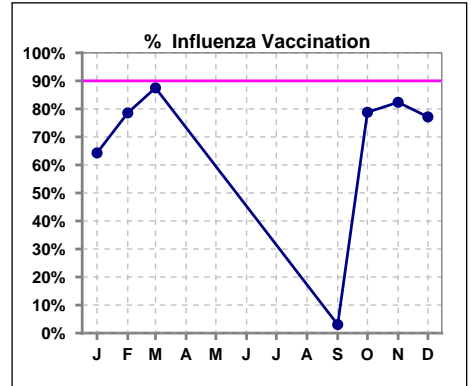
VII. Infection Control

Pneumonia vaccination within the past five years

	Jan	Feb	Mar	Apr	May	Jun	Jul	Aug	Sep	Oct	Nov	Dec
# Patient	14	14	16	22	22	28	29	30	33	33	34	35
# Pneumonia	9	10	13	12	13	15	15	15	24	30	31	29
% Pneumonia	64%	71%	81%	55%	59%	54%	52%	50%	73%	91%	91%	83%



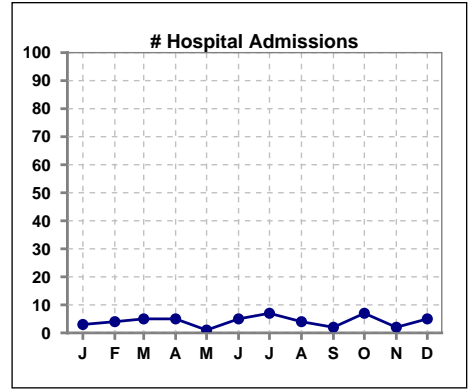
	Jan	Feb	Mar	Apr	May	Jun	Jul	Aug	Sep	Oct	Nov	Dec
# Patient	14	14	16						33	33	34	35
# Influenza	9	11	14						1	26	28	27
% Influenza	64%	79%	88%						3%	79%	82%	77%



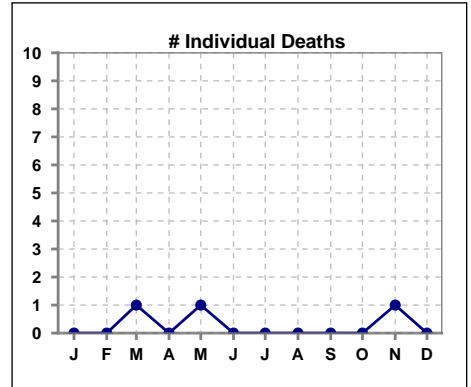
Methodology: a) All labs for 'Adequacy of Dialysis', 'Nutrition', 'Osteodystrophy', 'Anemia' and 'Diabetes' based on last value of month; b) BP's and #L processed are average of all values for month; c) Access data takes last access of month; d) Values for SGA and 'Infection Control' use most recent result.

VIII. Outcome measures

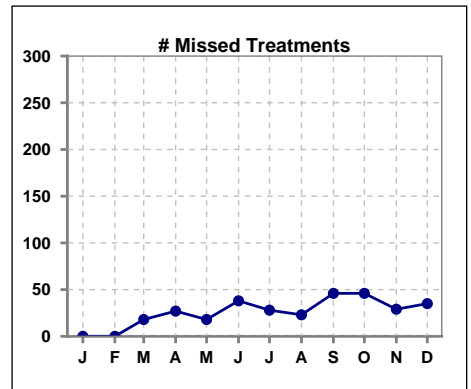
	Jan	Feb	Mar	Apr	May	Jun	Jul	Aug	Sep	Oct	Nov	Dec
# Patient	14	14	16	22	22	28	29	30	33	33	34	35
# Hospital Admissions	3	4	5	5	1	5	7	4	2	7	2	5



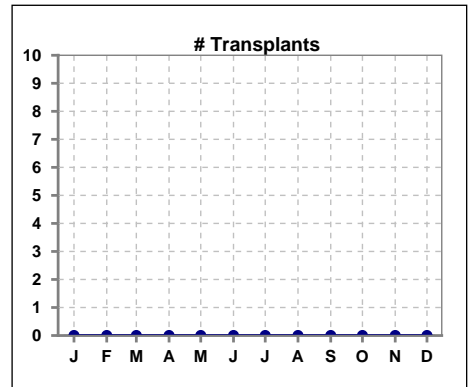
	Jan	Feb	Mar	Apr	May	Jun	Jul	Aug	Sep	Oct	Nov	Dec
# Patient	14	14	16	22	22	28	29	30	33	33	34	35
# Individual Deaths	0	0	1	0	1	0	0	0	0	0	1	0



	Jan	Feb	Mar	Apr	May	Jun	Jul	Aug	Sep	Oct	Nov	Dec
# Patient	14	14	16	22	22	28	29	30	33	33	34	35
# Missed Treatments	0	0	18	27	18	38	28	23	46	46	29	35



	Jan	Feb	Mar	Apr	May	Jun	Jul	Aug	Sep	Oct	Nov	Dec
# Patient	14	14	16	22	22	28	29	30	33	33	34	35
# Transplants	0	0	0	0	0	0	0	0	0	0	0	0



Methodology: a) All labs for 'Adequacy of Dialysis', 'Nutrition', 'Osteodystrophy', 'Anemia' and 'Diabetes' based on last value of month; b) BP's and #L processed are average of all values for month; c) Access data takes last access of month; d) Values for SGA and 'Infection Control' use most recent result.