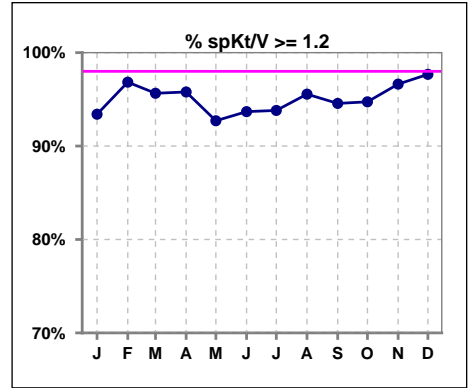
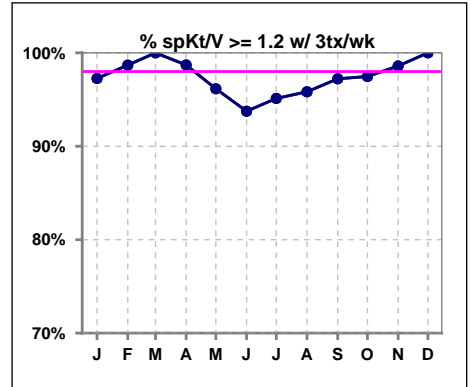


I. ADEQUACY OF DIALYSIS

	Jan	Feb	Mar	Apr	May	Jun	Jul	Aug	Sep	Oct	Nov	Dec
# spKt/V	91	95	92	95	96	95	97	90	92	95	89	86
# spKt/V >= 1.2	85	92	88	91	89	89	91	86	87	90	86	84
Pop. Mean	1.63	1.65	1.64	1.62	1.60	1.61	1.62	1.62	1.64	1.67	1.68	1.70
Std. Deviation	0.34	0.31	0.29	0.33	0.32	0.32	0.36	0.33	0.32	0.31	0.35	0.32
% spKt/V >= 1.2	93%	97%	96%	96%	93%	94%	94%	96%	95%	95%	97%	98%

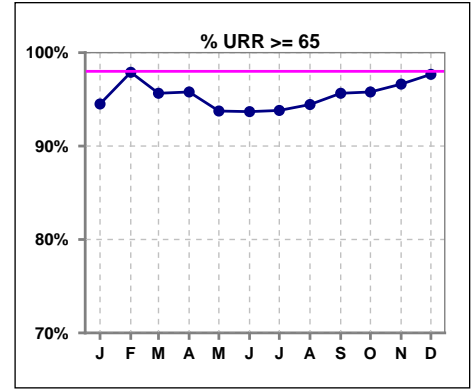


	Jan	Feb	Mar	Apr	May	Jun	Jul	Aug	Sep	Oct	Nov	Dec
# spKt/V w/ 3tx/wk	73	76	73	77	78	80	82	72	72	79	71	68
# spKt/V >= 1.2 w/3tx/wk	71	75	73	76	75	75	78	69	70	77	70	68
Pop. Mean	1.67	1.69	1.68	1.66	1.63	1.63	1.64	1.67	1.68	1.70	1.70	1.71
Std. Deviation	0.33	0.31	0.26	0.31	0.29	0.32	0.36	0.32	0.32	0.31	0.32	0.31
% >= 1.2 w/3tx/wk	97%	99%	100%	99%	96%	94%	95%	96%	97%	97%	99%	100%

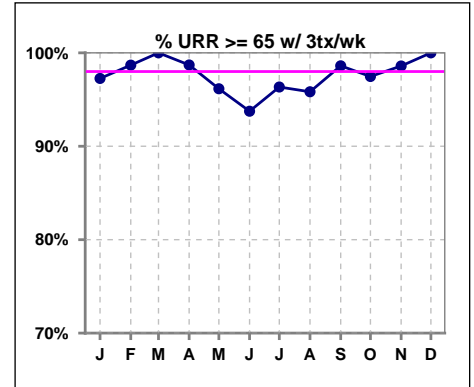


I. ADEQUACY OF DIALYSIS - CONT.

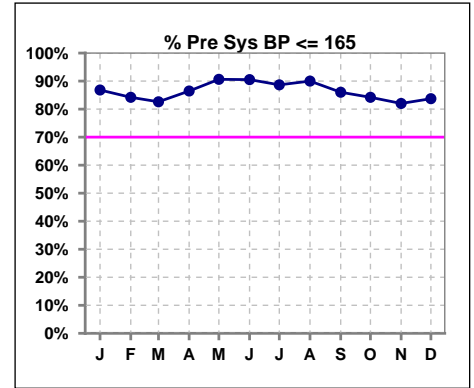
	Jan	Feb	Mar	Apr	May	Jun	Jul	Aug	Sep	Oct	Nov	Dec
# URR	91	95	92	95	96	95	97	90	92	95	89	86
# URR >= 65	86	93	88	91	90	89	91	85	88	91	86	84
Pop. Mean	75	76	76	75	75	75	74	75	75	76	76	76
Std. Deviation	6.67	6.05	5.65	6.80	6.58	6.54	7.28	6.72	6.22	6.29	6.57	6.32
% URR >= 65	95%	98%	96%	96%	94%	94%	94%	94%	96%	96%	97%	98%



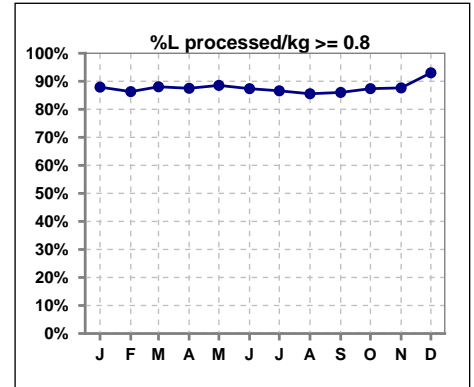
	Jan	Feb	Mar	Apr	May	Jun	Jul	Aug	Sep	Oct	Nov	Dec
# URR w/ 3tx/wk	73	76	73	77	78	80	82	72	72	79	71	68
# URR>=65 w/ 3tx/wk	71	75	73	76	75	75	79	69	71	77	70	68
Pop. Mean	76	76	76	76	75	75	75	76	76	76	77	77
Std. Deviation	6.23	5.93	4.96	6.47	5.92	6.47	7.39	6.31	5.99	6.08	5.97	5.72
% URR>=65 w/ 3tx/wk	97%	99%	100%	99%	96%	94%	96%	96%	99%	97%	99%	100%



	Jan	Feb	Mar	Apr	May	Jun	Jul	Aug	Sep	Oct	Nov	Dec
# Pre Sys BP	91	95	92	96	96	95	97	90	93	95	89	86
# Pre Sys BP <= 165	80	80	78	84	90	86	87	82	80	82	73	75
Pop. Mean	140	142	141	141	141	142	140	140	141	142	143	144
Std. Deviation	21.1	21.1	22.0	20.0	18.0	18.1	19.7	19.4	20.2	20.0	20.2	19.5
% Pre Sys BP <=165	87%	84%	83%	86%	91%	91%	89%	90%	86%	84%	82%	84%



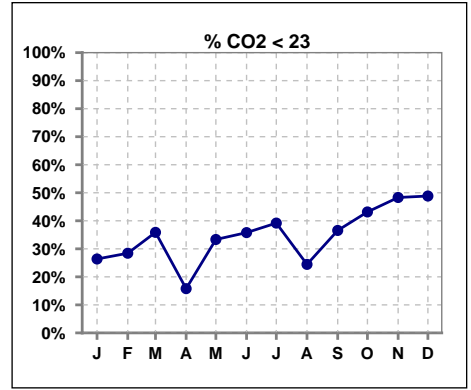
	Jan	Feb	Mar	Apr	May	Jun	Jul	Aug	Sep	Oct	Nov	Dec
# L processed/kg	91	95	92	96	96	95	97	90	93	95	89	86
# L processed/kg>=0.8	80	82	81	84	85	83	84	77	80	83	78	80
Pop. Mean	1	1	1	1	1	1	1	1	1	1	1	1
Std. Deviation	0.3	0.3	0.3	0.3	0.3	0.3	0.3	0.3	0.3	0.3	0.3	0.3
% L processed/kg>=0.8	88%	86%	88%	88%	89%	87%	87%	86%	86%	87%	88%	93%



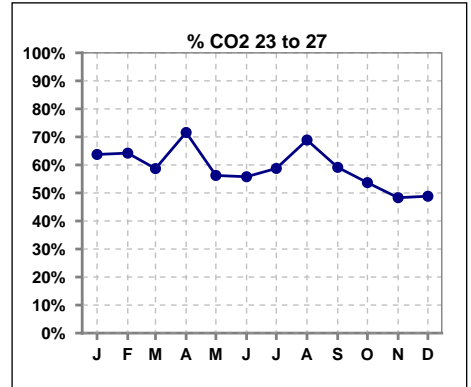
Methodology: a) All labs for 'Adequacy of Dialysis', 'Nutrition', 'Osteodystrophy', 'Anemia' and 'Diabetes' based on last value of month; b) BP's and #L processed are average of all values for month; c) Access data takes last access of month; d) Values for SGA and 'Infection Control' use most recent result.

I. ADEQUACY OF DIALYSIS - CONT.

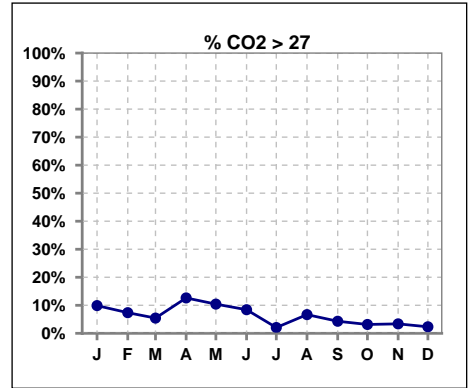
	Jan	Feb	Mar	Apr	May	Jun	Jul	Aug	Sep	Oct	Nov	Dec
# CO2	91	95	92	95	96	95	97	90	93	95	89	86
# CO2 < 23	24	27	33	15	32	34	38	22	34	41	43	42
Pop. Mean	24	24	23	25	24	23	23	24	23	23	23	23
Std. Deviation	2.54	2.59	2.40	2.83	2.70	3.17	2.62	2.39	2.69	2.50	2.69	2.63
% CO2 < 23	26%	28%	36%	16%	33%	36%	39%	24%	37%	43%	48%	49%



	Jan	Feb	Mar	Apr	May	Jun	Jul	Aug	Sep	Oct	Nov	Dec
# CO2	91	95	92	95	96	95	97	90	93	95	89	86
# CO2 23 to 27	58	61	54	68	54	53	57	62	55	51	43	42
Pop. Mean	24	24	23	25	24	23	23	24	23	23	23	23
Std. Deviation	2.54	2.59	2.40	2.83	2.70	3.17	2.62	2.39	2.69	2.50	2.69	2.63
% CO2 23 to 27	64%	64%	59%	72%	56%	56%	59%	69%	59%	54%	48%	49%



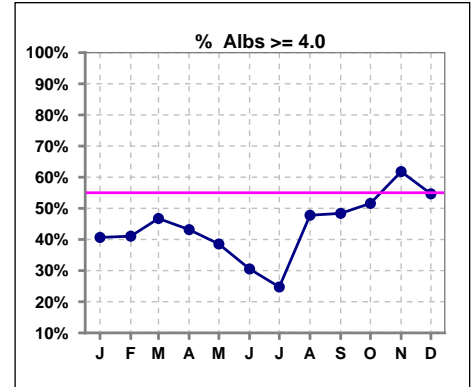
	Jan	Feb	Mar	Apr	May	Jun	Jul	Aug	Sep	Oct	Nov	Dec
# CO2	91	95	92	95	96	95	97	90	93	95	89	86
# CO2 > 27	9	7	5	12	10	8	2	6	4	3	3	2
Pop. Mean	24	24	23	25	24	23	23	24	23	23	23	23
Std. Deviation	2.54	2.59	2.40	2.83	2.70	3.17	2.62	2.39	2.69	2.50	2.69	2.63
% CO2 > 27	10%	7%	5%	13%	10%	8%	2%	7%	4%	3%	3%	2%



*Albumin values use BCG method - as of July 2001

II. NUTRITION

	Jan	Feb	Mar	Apr	May	Jun	Jul	Aug	Sep	Oct	Nov	Dec
# Albumin	91	95	92	95	96	95	97	90	93	95	89	86
# Albumin >= 4.0	37	39	43	41	37	29	24	43	45	49	55	47
Pop. Mean	3.8	3.8	3.8	3.8	3.8	3.8	3.7	3.9	3.9	3.9	4.0	3.9
Std. Deviation	0.40	0.42	0.43	0.48	0.44	0.39	0.40	0.36	0.31	0.34	0.32	0.31
% Alb >= 4.0	41%	41%	47%	43%	39%	31%	25%	48%	48%	52%	62%	55%

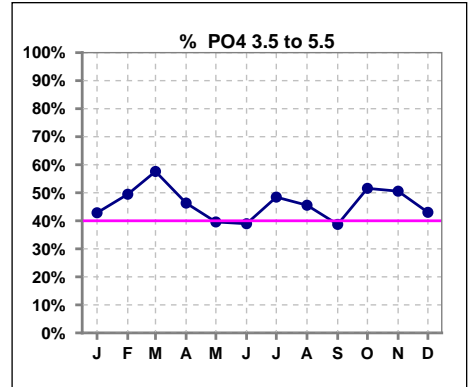


Methodology: a) All labs for 'Adequacy of Dialysis', 'Nutrition', 'Osteodystrophy', 'Anemia' and 'Diabetes' based on last value of month; b) BP's and #L processed are average of all values for month; c) Access data takes last access of month; d) Values for SGA and 'Infection Control' use most recent result.

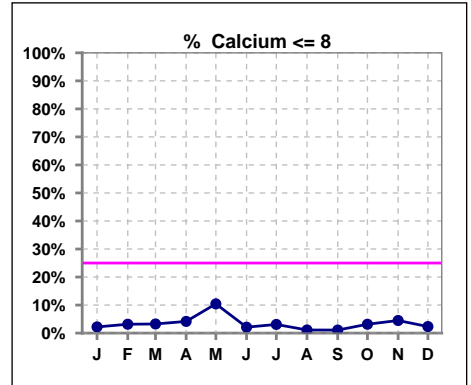
Lab methodology for PTH changed January 2012

III. OSTEODYSTROPHY

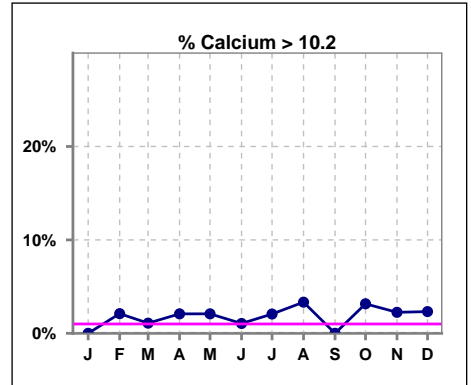
	Jan	Feb	Mar	Apr	May	Jun	Jul	Aug	Sep	Oct	Nov	Dec
# PO4	91	95	92	95	96	95	97	90	93	95	89	86
# PO4 3.5 to 5.5	39	47	53	44	38	37	47	41	36	49	45	37
Pop. Mean	5.7	5.7	5.5	5.6	5.9	5.9	5.6	5.8	5.9	5.9	5.8	5.8
Std. Deviation	1.74	1.40	1.39	1.35	1.40	1.62	1.71	1.64	1.84	1.86	2.09	1.79
% PO4 3.5 to 5.5	43%	49%	58%	46%	40%	39%	48%	46%	39%	52%	51%	43%



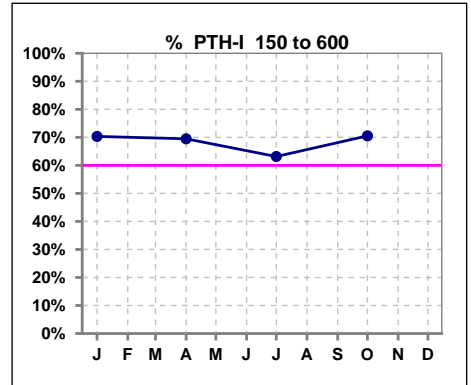
	Jan	Feb	Mar	Apr	May	Jun	Jul	Aug	Sep	Oct	Nov	Dec
# Calcium	91	95	92	96	96	95	97	90	93	95	89	86
# Calcium <= 8	2	3	3	4	10	2	3	1	1	3	4	2
Pop. Mean	9.2	9.3	9.2	9.2	9.1	9.2	9.1	9.3	9.3	9.2	9.3	9.3
Std. Deviation	0.57	0.66	0.56	0.63	0.67	0.56	0.57	0.54	0.49	0.60	0.59	0.64
% Calcium <= 8	2%	3%	3%	4%	10%	2%	3%	1%	1%	3%	4%	2%



	Jan	Feb	Mar	Apr	May	Jun	Jul	Aug	Sep	Oct	Nov	Dec
# Calcium	91	95	92	96	96	95	97	90	93	95	89	86
# Calcium > 10.2	0	2	1	2	2	1	2	3	0	3	2	2
Pop. Mean	9.2	9.3	9.2	9.2	9.1	9.2	9.1	9.3	9.3	9.2	9.3	9.3
Std. Deviation	0.57	0.66	0.56	0.63	0.67	0.56	0.57	0.54	0.49	0.60	0.59	0.64
% Calcium > 10.2	0%	2%	1%	2%	2%	1%	2%	3%	0%	3%	2%	2%



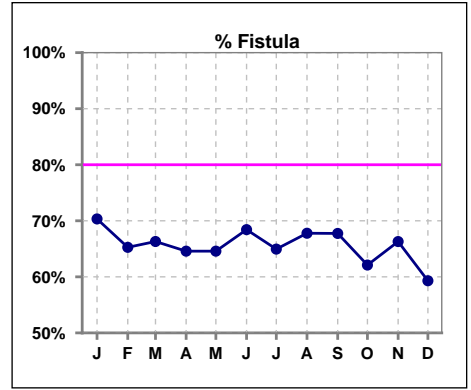
	Jan	Feb	Mar	Apr	May	Jun	Jul	Aug	Sep	Oct	Nov	Dec
# PTH-I	91			95			95			95		
# PTH-I 150 to 600	64			66			60			67		
Pop. Mean	388			375			400			425		
Std. Deviation	259			256			274			309		
% PTH-I 150 to 600	70%			69%			63%			71%		



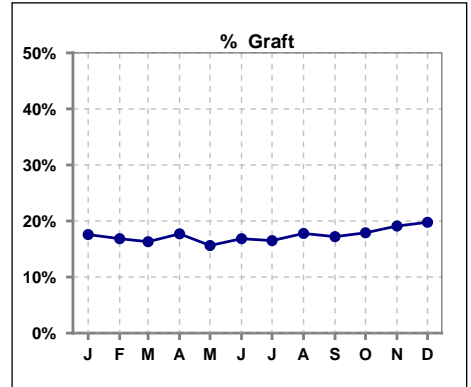
Methodology: a) All labs for 'Adequacy of Dialysis', 'Nutrition', 'Osteodystrophy', 'Anemia' and 'Diabetes' based on last value of month; b) BP's and #L processed are average of all values for month; c) Access data takes last access of month; d) Values for SGA and 'Infection Control' use most recent result.

IV. ACCESS

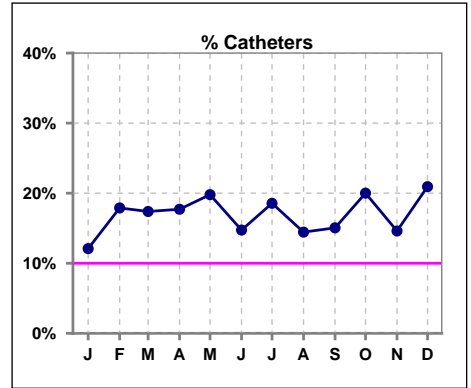
	Jan	Feb	Mar	Apr	May	Jun	Jul	Aug	Sep	Oct	Nov	Dec
# Access	91	95	92	96	96	95	97	90	93	95	89	86
# Fistula	64	62	61	62	62	65	63	61	63	59	59	51
% Fistula	70%	65%	66%	65%	65%	68%	65%	68%	68%	62%	66%	59%



	Jan	Feb	Mar	Apr	May	Jun	Jul	Aug	Sep	Oct	Nov	Dec
# Access	91	95	92	96	96	95	97	90	93	95	89	86
# Graft	16	16	15	17	15	16	16	16	16	17	17	17
% Graft	18%	17%	16%	18%	16%	17%	16%	18%	17%	18%	19%	20%



	Jan	Feb	Mar	Apr	May	Jun	Jul	Aug	Sep	Oct	Nov	Dec
# Access	91	95	92	96	96	95	97	90	93	95	89	86
# Catheters	11	17	16	17	19	14	18	13	14	19	13	18
% Catheters	12%	18%	17%	18%	20%	15%	19%	14%	15%	20%	15%	21%



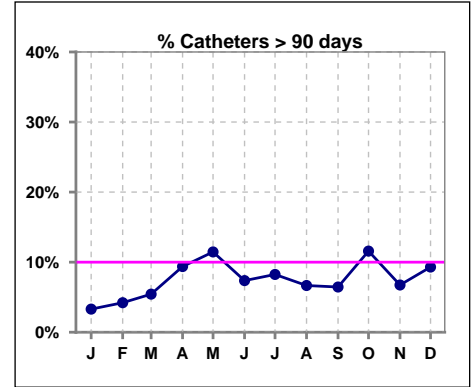
Methodology: a) All labs for 'Adequacy of Dialysis', 'Nutrition', 'Osteodystrophy', 'Anemia' and 'Diabetes' based on last value of month; b) BP's and #L processed are average of all values for month; c) Access data takes last access of month; d) Values for SGA and 'Infection Control' use most recent result.

IV. ACCESS - CONT.

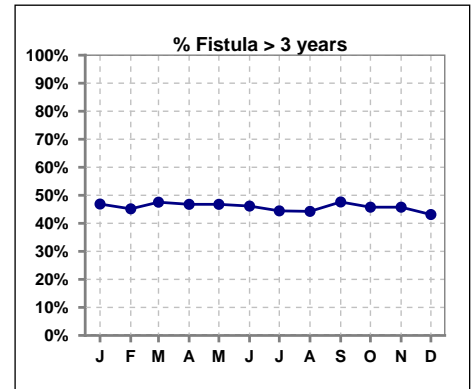
Catheters > 90 days

	Jan	Feb	Mar	Apr	May	Jun	Jul	Aug	Sep	Oct	Nov	Dec
# Access	91	95	92	96	96	95	97	90	93	95	89	86
# Catheters	3	4	5	9	11	7	8	6	6	11	6	8
% Catheters	3%	4%	5%	9%	11%	7%	8%	7%	6%	12%	7%	9%

Definition: Catheter in use on last treatment of the month



	Jan	Feb	Mar	Apr	May	Jun	Jul	Aug	Sep	Oct	Nov	Dec
# Fistula	64	62	61	62	62	65	63	61	63	59	59	51
# Fistula > 3 yrs	30	28	29	29	29	30	28	27	30	27	27	22
% Fistula > 3 yrs	47%	45%	48%	47%	47%	46%	44%	44%	48%	46%	46%	43%

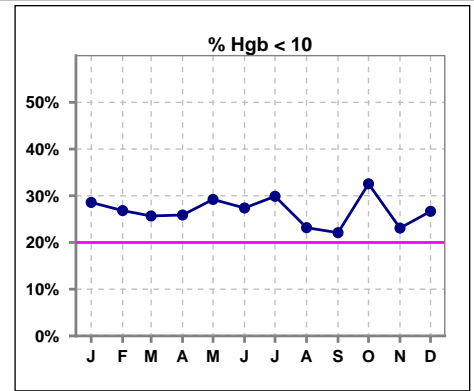


Methodology: a) All labs for 'Adequacy of Dialysis', 'Nutrition', 'Osteodystrophy', 'Anemia' and 'Diabetes' based on last value of month; b) BP's and #L processed are average of all values for month; c) Access data takes last access of month; d) Values for SGA and 'Infection Control' use most recent result.

V. ANEMIA

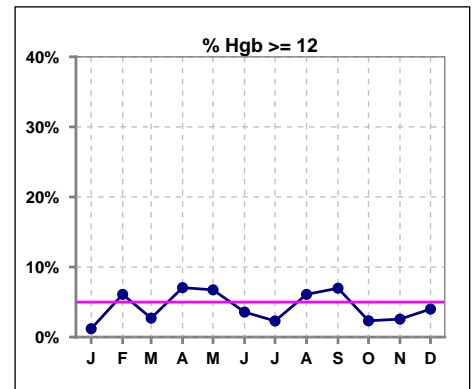
	Jan	Feb	Mar	Apr	May	Jun	Jul	Aug	Sep	Oct	Nov	Dec
# Hgb	84	82	74	85	89	84	87	82	86	86	78	75
# Hgb < 10	24	22	19	22	26	23	26	19	19	28	18	20
Pop. Mean	10.4	10.5	10.6	10.5	10.6	10.6	10.3	10.6	10.6	10.4	10.6	10.4
Std. Deviation	1.2	1.3	1.2	1.2	1.2	1.2	1.2	1.3	1.3	1.2	1.1	1.3
% Hgb < 10	29%	27%	26%	26%	29%	27%	30%	23%	22%	33%	23%	27%

Note: Excludes patients who received no ESA in month.



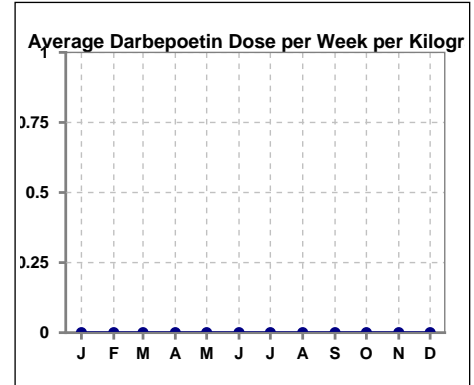
	Jan	Feb	Mar	Apr	May	Jun	Jul	Aug	Sep	Oct	Nov	Dec
# Hgb	84	82	74	85	89	84	87	82	86	86	78	75
# Hgb >= 12	1	5	2	6	6	3	2	5	6	2	2	3
Pop. Mean	10.4	10.5	10.6	10.5	10.6	10.6	10.3	10.6	10.6	10.4	10.6	10.4
Std. Deviation	1.2	1.3	1.2	1.2	1.2	1.2	1.2	1.3	1.3	1.2	1.1	1.3
% Hgb >= 12	1%	6%	3%	7%	7%	4%	2%	6%	7%	2%	3%	4%

Note: Excludes patients who received no ESA in month.



Average Darbepoetin Dose per Week per Kilogram

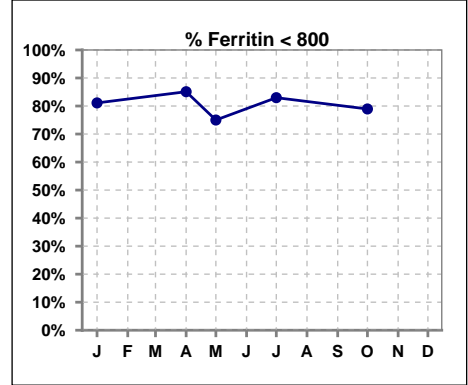
	Jan	Feb	Mar	Apr	May	Jun	Jul	Aug	Sep	Oct	Nov	Dec
# Average Darbepoetin	0	0	0	0	0	0	0	0	0	0	0	0



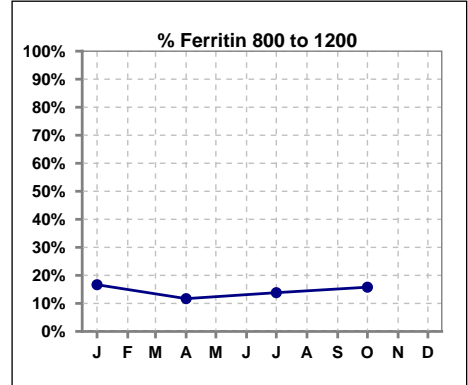
V. ANEMIA - CONT.

Iron Profile

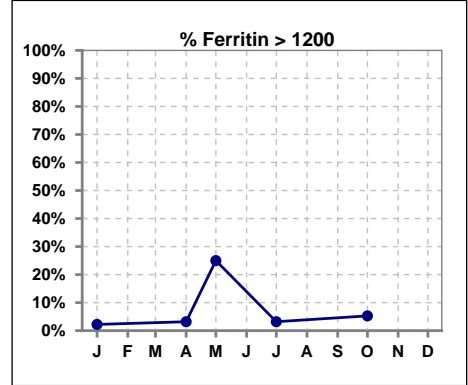
	Jan	Feb	Mar	Apr	May	Jun	Jul	Aug	Sep	Oct	Nov	Dec
# Ferritin	90			94	12		94			95		
# Ferritin < 800	73			80	9		78			75		
Pop. Mean	510			496	941		489			540		
Std. Deviation	315			322	1244		346			390		
% Ferritin < 800	81%			85%	75%		83%			79%		



	Jan	Feb	Mar	Apr	May	Jun	Jul	Aug	Sep	Oct	Nov	Dec
# Ferritin	90			94	12		94			95		
# Ferritin 800 to 1200	15			11			13			15		
Pop. Mean	510			496	941		489			540		
Std. Deviation	315			322	1244		346			390		
% Ferritin 800 to 1200	17%			12%			14%			16%		



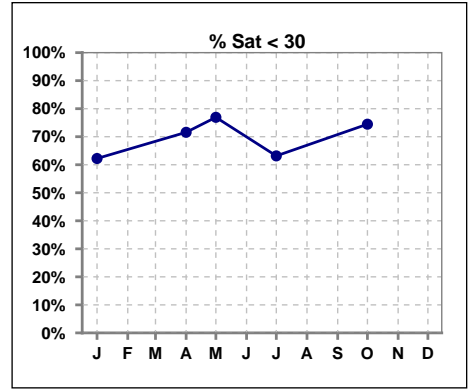
	Jan	Feb	Mar	Apr	May	Jun	Jul	Aug	Sep	Oct	Nov	Dec
# Ferritin	90			94	12		94			95		
# Ferritin > 1200	2			3	3		3			5		
Pop. Mean	510			496	941		489			540		
Std. Deviation	315			322	1244		346			390		
% Ferritin > 1200	2%			3%	25%		3%			5%		



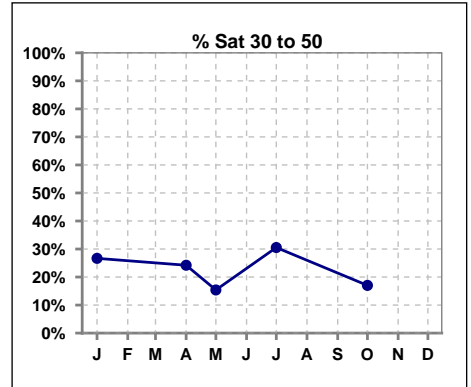
Methodology: a) All labs for 'Adequacy of Dialysis', 'Nutrition', 'Osteodystrophy', 'Anemia' and 'Diabetes' based on last value of month; b) BP's and #L processed are average of all values for month; c) Access data takes last access of month; d) Values for SGA and 'Infection Control' use most recent result.

V. ANEMIA - CONT.

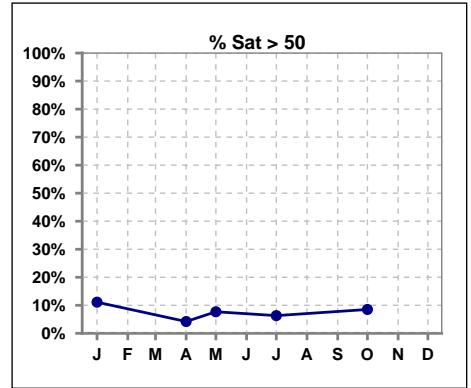
	Jan	Feb	Mar	Apr	May	Jun	Jul	Aug	Sep	Oct	Nov	Dec
# % Sat	90			95	13		95			94		
# % Sat < 30	56			68	10		60			70		
Pop. Mean	31			26	28		28			25		
Std. Deviation	19			12	21		13			17		
% % Sat < 30	62%			72%	77%		63%			74%		



	Jan	Feb	Mar	Apr	May	Jun	Jul	Aug	Sep	Oct	Nov	Dec
# % Sat	90			95	13		95			94		
# % Sat 30 to 50	24			23	2		29			16		
Pop. Mean	31			26	28		28			25		
Std. Deviation	19			12	21		13			17		
% % Sat 30 to 50	27%			24%	15%		31%			17%		

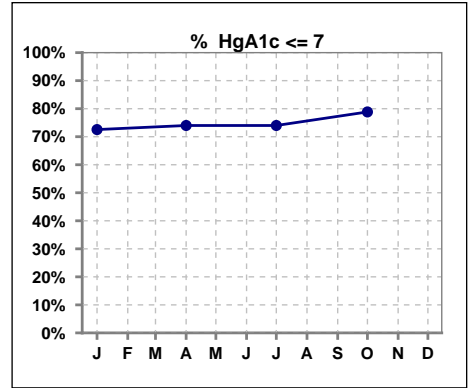


	Jan	Feb	Mar	Apr	May	Jun	Jul	Aug	Sep	Oct	Nov	Dec
# % Sat	90			95	13		95			94		
# % Sat > 50	10			4	1		6			8		
Pop. Mean	31			26	28		28			25		
Std. Deviation	19			12	21		13			17		
% % Sat > 50	11%			4%	8%		6%			9%		



VI. Diabetes

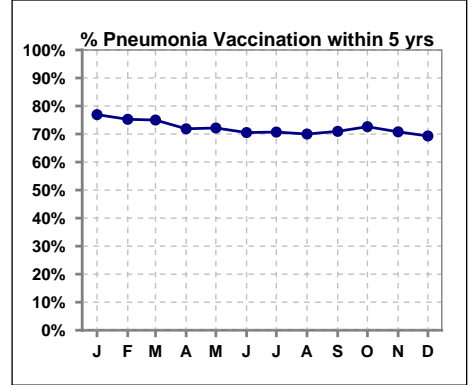
	Jan	Feb	Mar	Apr	May	Jun	Jul	Aug	Sep	Oct	Nov	Dec
# HgA1c	51			50			50			52		
# HgA1c <= 7	37			37			37			41		
Pop. Mean	6.8			6.6			6.6			6.4		
Std. Deviation	1.60			1.47			1.63			1.70		
% HgA1c <= 7	73%			74%			74%			79%		



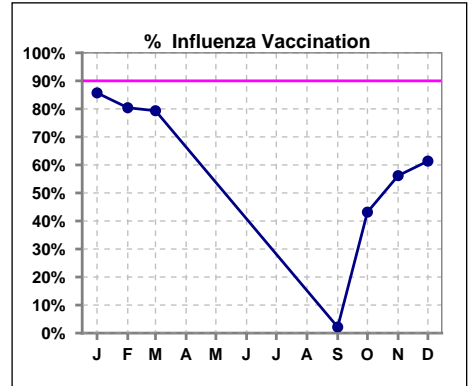
VII. Infection Control

Pneumonia vaccination within the past five years

	Jan	Feb	Mar	Apr	May	Jun	Jul	Aug	Sep	Oct	Nov	Dec
# Patient	91	97	92	96	97	95	99	90	93	95	89	88
# Pneumonia	70	73	69	69	70	67	70	63	66	69	63	61
% Pneumonia	77%	75%	75%	72%	72%	71%	71%	70%	71%	73%	71%	69%



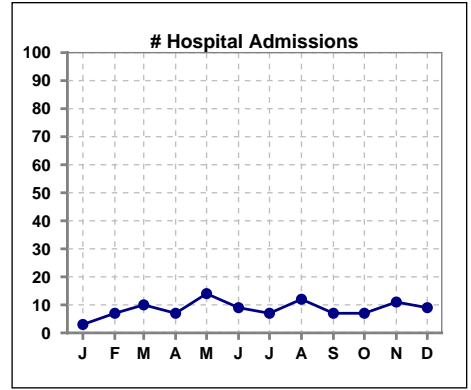
	Jan	Feb	Mar	Apr	May	Jun	Jul	Aug	Sep	Oct	Nov	Dec
# Patient	91	97	92						93	95	89	88
# Influenza	78	78	73						2	41	50	54
% Influenza	86%	80%	79%						2%	43%	56%	61%



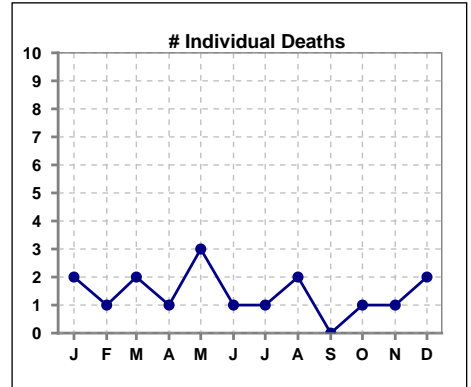
Methodology: a) All labs for 'Adequacy of Dialysis', 'Nutrition', 'Osteodystrophy', 'Anemia' and 'Diabetes' based on last value of month; b) BP's and #L processed are average of all values for month; c) Access data takes last access of month; d) Values for SGA and 'Infection Control' use most recent result.

VIII. Outcome measures

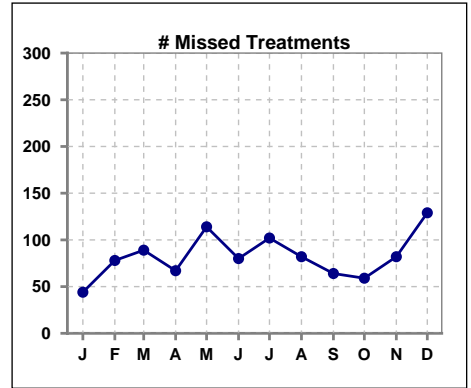
	Jan	Feb	Mar	Apr	May	Jun	Jul	Aug	Sep	Oct	Nov	Dec
# Patient	91	97	92	96	97	95	99	90	93	95	89	88
# Hospital Admissions	3	7	10	7	14	9	7	12	7	7	11	9



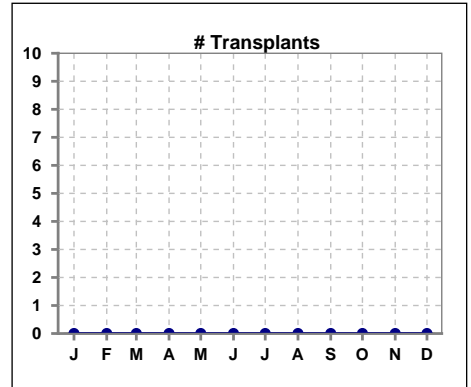
	Jan	Feb	Mar	Apr	May	Jun	Jul	Aug	Sep	Oct	Nov	Dec
# Patient	91	97	92	96	97	95	99	90	93	95	89	88
# Individual Deaths	2	1	2	1	3	1	1	2	0	1	1	2



	Jan	Feb	Mar	Apr	May	Jun	Jul	Aug	Sep	Oct	Nov	Dec
# Patient	91	97	92	96	97	95	99	90	93	95	89	88
# Missed Treatments	44	78	89	67	114	80	102	82	64	59	82	129



	Jan	Feb	Mar	Apr	May	Jun	Jul	Aug	Sep	Oct	Nov	Dec
# Patient	91	97	92	96	97	95	99	90	93	95	89	88
# Transplants	0	0	0	0	0	0	0	0	0	0	0	0



Methodology: a) All labs for 'Adequacy of Dialysis', 'Nutrition', 'Osteodystrophy', 'Anemia' and 'Diabetes' based on last value of month; b) BP's and #L processed are average of all values for month; c) Access data takes last access of month; d) Values for SGA and 'Infection Control' use most recent result.