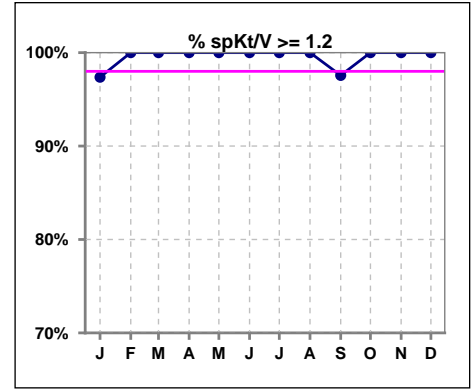
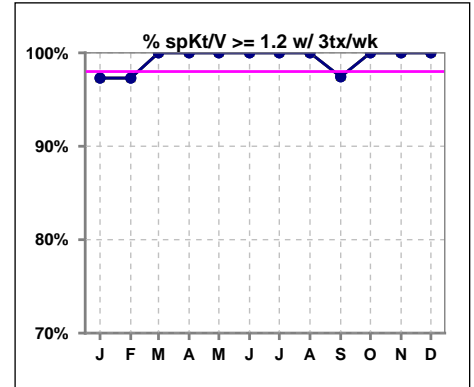


**I. ADEQUACY OF DIALYSIS**

	Jan	Feb	Mar	Apr	May	Jun	Jul	Aug	Sep	Oct	Nov	Dec
# spKt/V	38	38	38	38	37	42	42	40	41	41	41	39
# spKt/V >= 1.2	37	38	38	38	37	42	42	40	40	41	41	39
Pop. Mean	1.57	1.60	1.61	1.59	1.62	1.58	1.63	1.60	1.62	1.68	1.69	1.69
Std. Deviation	0.27	0.21	0.23	0.23	0.22	0.25	0.25	0.22	0.26	0.24	0.28	0.29
% spKt/V >= 1.2	97%	100%	100%	100%	100%	100%	100%	100%	98%	100%	100%	100%



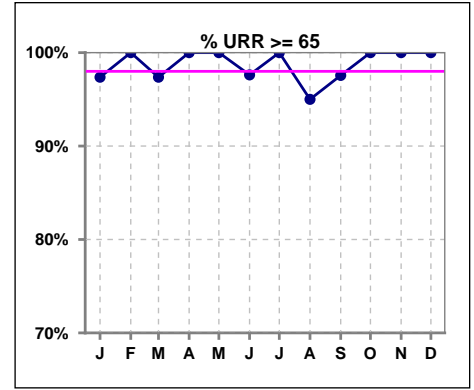
	Jan	Feb	Mar	Apr	May	Jun	Jul	Aug	Sep	Oct	Nov	Dec
# spKt/V w/ 3tx/wk	37	37	37	37	36	41	41	39	39	40	39	37
# spKt/V >= 1.2 w/3tx/wk	36	36	37	37	36	41	41	39	38	40	39	37
Pop. Mean	1.57	1.60	1.62	1.58	1.61	1.58	1.62	1.59	1.62	1.68	1.68	1.69
Std. Deviation	0.27	0.22	0.23	0.23	0.22	0.25	0.25	0.22	0.27	0.24	0.28	0.30
% >= 1.2 w/3tx/wk	97%	97%	100%	100%	100%	100%	100%	100%	97%	100%	100%	100%



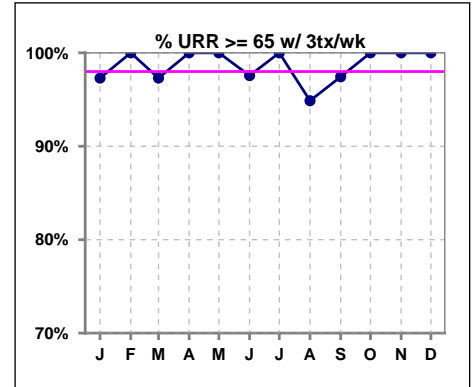
Methodology: a) All labs for 'Adequacy of Dialysis', 'Nutrition', 'Osteodystrophy', 'Anemia' and 'Diabetes' based on last value of month; b) BP's and #L processed are average of all values for month; c) Access data takes last access of month; d) Values for SGA and 'Infection Control' use most recent result.

**I. ADEQUACY OF DIALYSIS - CONT.**

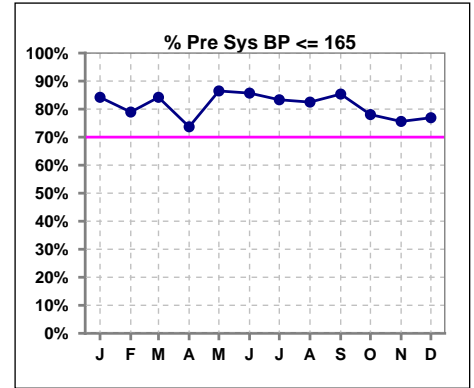
	Jan	Feb	Mar	Apr	May	Jun	Jul	Aug	Sep	Oct	Nov	Dec
# URR	38	38	38	38	37	42	42	40	41	41	41	39
# URR >= 65	37	38	37	38	37	41	42	38	40	41	41	39
Pop. Mean	74	75	75	75	75	74	75	75	75	76	76	76
Std. Deviation	7.32	4.65	4.97	4.76	4.44	5.17	4.88	4.77	5.51	4.50	5.43	5.20
% URR >= 65	97%	100%	97%	100%	100%	98%	100%	95%	98%	100%	100%	100%



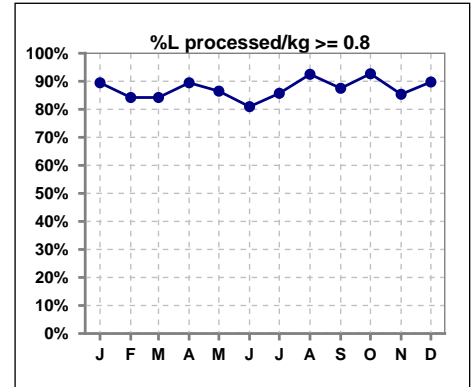
	Jan	Feb	Mar	Apr	May	Jun	Jul	Aug	Sep	Oct	Nov	Dec
# URR w/ 3tx/wk	37	37	37	37	36	41	41	39	39	40	39	37
# URR>=65 w/ 3tx/wk	36	37	36	37	36	40	41	37	38	40	39	37
Pop. Mean	74	75	75	74	75	74	75	75	75	76	76	76
Std. Deviation	7.42	4.71	5.00	4.74	4.43	5.22	4.90	4.75	5.64	4.54	5.40	5.25
% URR>=65 w/ 3tx/wk	97%	100%	97%	100%	100%	98%	100%	95%	97%	100%	100%	100%



	Jan	Feb	Mar	Apr	May	Jun	Jul	Aug	Sep	Oct	Nov	Dec
# Pre Sys BP	38	38	38	38	37	42	42	40	41	41	41	39
# Pre Sys BP <= 165	32	32	33	29	33	36	36	33	35	32	31	30
Pop. Mean	152	154	152	153	149	148	146	146	145	147	149	149
Std. Deviation	16.1	16.1	15.7	17.6	15.8	19.9	17.8	19.0	19.0	20.0	19.7	20.1
% Pre Sys BP <=165	84%	79%	84%	74%	86%	86%	83%	83%	85%	78%	76%	77%



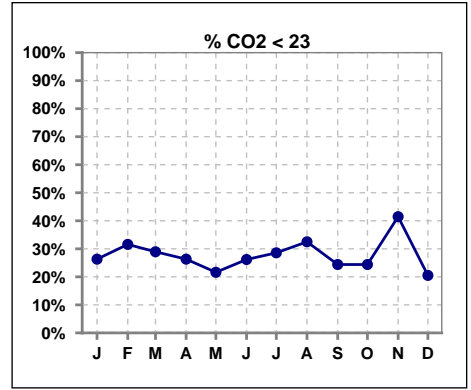
	Jan	Feb	Mar	Apr	May	Jun	Jul	Aug	Sep	Oct	Nov	Dec
# L processed/kg	38	38	38	38	37	42	42	40	40	41	41	39
# L processed/kg>=0.8	34	32	32	34	32	34	36	37	35	38	35	35
Pop. Mean	1	1	1	1	1	1	1	1	1	1	1	1
Std. Deviation	0.2	0.2	0.3	0.2	0.2	0.2	0.3	0.3	0.2	0.2	0.3	0.3
% L processed/kg>=0.8	89%	84%	84%	89%	86%	81%	86%	93%	88%	93%	85%	90%



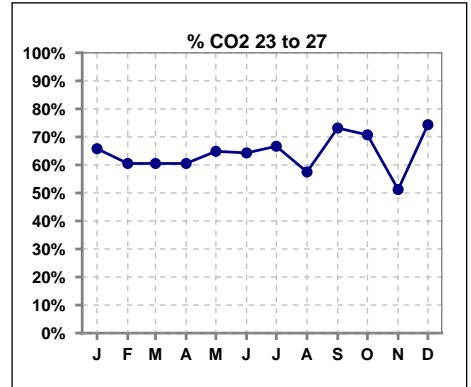
Methodology: a) All labs for 'Adequacy of Dialysis', 'Nutrition', 'Osteodystrophy', 'Anemia' and 'Diabetes' based on last value of month; b) BP's and #L processed are average of all values for month; c) Access data takes last access of month; d) Values for SGA and 'Infection Control' use most recent result.

**I. ADEQUACY OF DIALYSIS - CONT.**

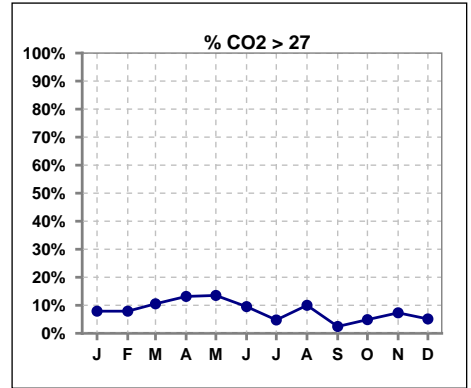
	Jan	Feb	Mar	Apr	May	Jun	Jul	Aug	Sep	Oct	Nov	Dec
# CO2	38	38	38	38	37	42	42	40	41	41	41	39
# CO2 < 23	10	12	11	10	8	11	12	13	10	10	17	8
Pop. Mean	24	24	24	24	24	24	24	24	24	24	24	24
Std. Deviation	2.66	2.35	2.89	2.62	3.19	2.44	2.24	2.34	2.83	2.38	2.67	2.51
<b>% CO2 &lt; 23</b>	<b>26%</b>	<b>32%</b>	<b>29%</b>	<b>26%</b>	<b>22%</b>	<b>26%</b>	<b>29%</b>	<b>33%</b>	<b>24%</b>	<b>24%</b>	<b>41%</b>	<b>21%</b>



	Jan	Feb	Mar	Apr	May	Jun	Jul	Aug	Sep	Oct	Nov	Dec
# CO2	38	38	38	38	37	42	42	40	41	41	41	39
# CO2 23 to 27	25	23	23	23	24	27	28	23	30	29	21	29
Pop. Mean	24	24	24	24	24	24	24	24	24	24	24	24
Std. Deviation	2.66	2.35	2.89	2.62	3.19	2.44	2.24	2.34	2.83	2.38	2.67	2.51
<b>% CO2 23 to 27</b>	<b>66%</b>	<b>61%</b>	<b>61%</b>	<b>61%</b>	<b>65%</b>	<b>64%</b>	<b>67%</b>	<b>58%</b>	<b>73%</b>	<b>71%</b>	<b>51%</b>	<b>74%</b>



	Jan	Feb	Mar	Apr	May	Jun	Jul	Aug	Sep	Oct	Nov	Dec
# CO2	38	38	38	38	37	42	42	40	41	41	41	39
# CO2 > 27	3	3	4	5	5	4	2	4	1	2	3	2
Pop. Mean	24	24	24	24	24	24	24	24	24	24	24	24
Std. Deviation	2.66	2.35	2.89	2.62	3.19	2.44	2.24	2.34	2.83	2.38	2.67	2.51
<b>% CO2 &gt; 27</b>	<b>8%</b>	<b>8%</b>	<b>11%</b>	<b>13%</b>	<b>14%</b>	<b>10%</b>	<b>5%</b>	<b>10%</b>	<b>2%</b>	<b>5%</b>	<b>7%</b>	<b>5%</b>

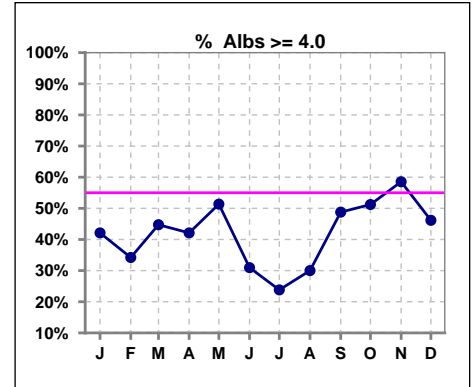


Methodology: a) All labs for 'Adequacy of Dialysis', 'Nutrition', 'Osteodystrophy', 'Anemia' and 'Diabetes' based on last value of month; b) BP's and #L processed are average of all values for month; c) Access data takes last access of month; d) Values for SGA and 'Infection Control' use most recent result.

\*Albumin values use BCG method - as of July 2001

**II. NUTRITION**

	Jan	Feb	Mar	Apr	May	Jun	Jul	Aug	Sep	Oct	Nov	Dec
# Albumin	38	38	38	38	37	42	42	40	41	41	41	39
# Albumin >= 4.0	16	13	17	16	19	13	10	12	20	21	24	18
Pop. Mean	3.9	3.8	3.9	3.9	3.9	3.7	3.7	3.8	3.9	3.9	4.0	3.9
Std. Deviation	0.35	0.31	0.34	0.30	0.35	0.39	0.38	0.37	0.37	0.31	0.29	0.37
% Alb >= 4.0	42%	34%	45%	42%	51%	31%	24%	30%	49%	51%	59%	46%

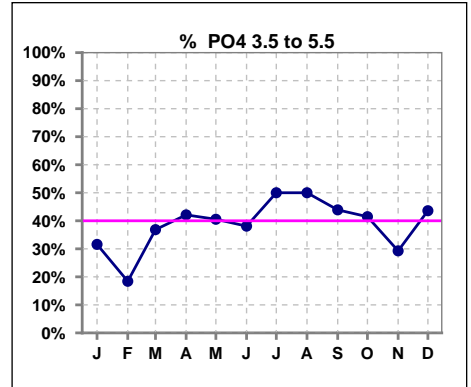


Methodology: a) All labs for 'Adequacy of Dialysis', 'Nutrition', 'Osteodystrophy', 'Anemia' and 'Diabetes' based on last value of month; b) BP's and #L processed are average of all values for month; c) Access data takes last access of month; d) Values for SGA and 'Infection Control' use most recent result.

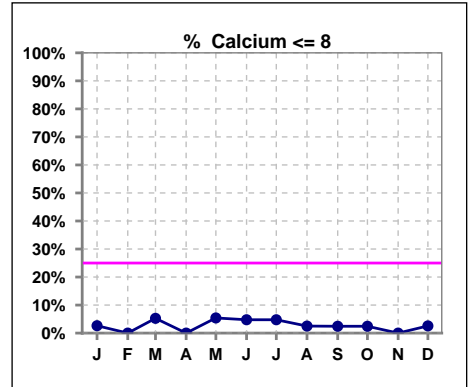
Lab methodology for PTH changed January 2012

**III. OSTEODYSTROPHY**

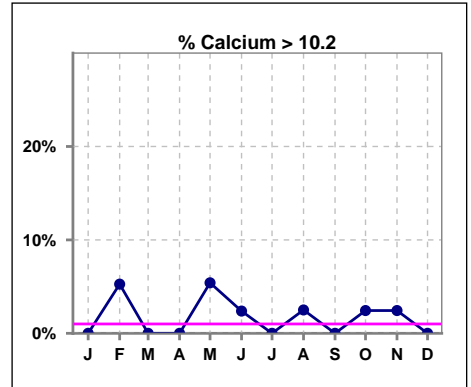
	Jan	Feb	Mar	Apr	May	Jun	Jul	Aug	Sep	Oct	Nov	Dec
# PO4	38	38	38	38	37	42	42	40	41	41	41	39
# PO4 3.5 to 5.5	12	7	14	16	15	16	21	20	18	17	12	17
Pop. Mean	6.1	6.0	5.7	6.0	5.7	5.4	5.5	5.6	5.7	5.6	5.7	5.8
Std. Deviation	1.96	1.84	2.05	1.97	1.49	1.80	1.74	1.94	1.90	1.84	1.99	1.79
% PO4 3.5 to 5.5	32%	18%	37%	42%	41%	38%	50%	50%	44%	41%	29%	44%



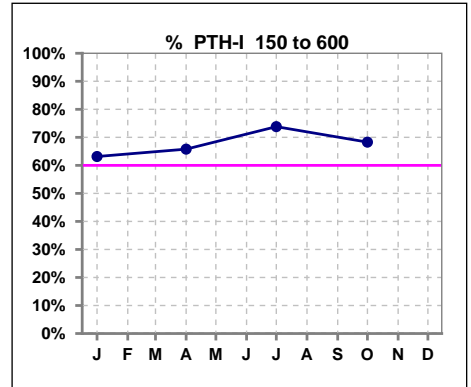
	Jan	Feb	Mar	Apr	May	Jun	Jul	Aug	Sep	Oct	Nov	Dec
# Calcium	38	38	38	38	37	42	42	40	41	41	41	39
# Calcium <= 8	1	0	2	0	2	2	2	1	1	1	0	1
Pop. Mean	9.0	9.2	9.1	9.2	9.1	9.2	9.1	9.2	9.2	9.2	9.3	9.2
Std. Deviation	0.50	0.61	0.50	0.47	0.72	0.63	0.61	0.58	0.52	0.56	0.52	0.46
% Calcium <= 8	3%	0%	5%	0%	5%	5%	5%	3%	2%	2%	0%	3%



	Jan	Feb	Mar	Apr	May	Jun	Jul	Aug	Sep	Oct	Nov	Dec
# Calcium	38	38	38	38	37	42	42	40	41	41	41	39
# Calcium > 10.2	0	2	0	0	2	1	0	1	0	1	1	0
Pop. Mean	9.0	9.2	9.1	9.2	9.1	9.2	9.1	9.2	9.2	9.2	9.3	9.2
Std. Deviation	0.50	0.61	0.50	0.47	0.72	0.63	0.61	0.58	0.52	0.56	0.52	0.46
% Calcium > 10.2	0%	5%	0%	0%	5%	2%	0%	3%	0%	2%	2%	0%



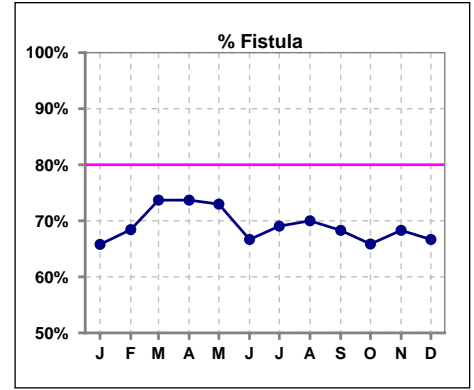
	Jan	Feb	Mar	Apr	May	Jun	Jul	Aug	Sep	Oct	Nov	Dec
# PTH-I	38			38			42			41		
# PTH-I 150 to 600	24			25			31			28		
Pop. Mean	446			425			391			403		
Std. Deviation	272			309			293			333		
% PTH-I 150 to 600	63%			66%			74%			68%		



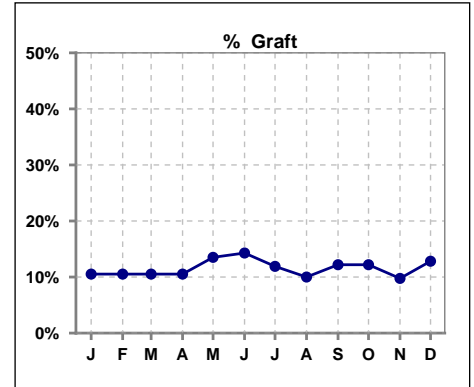
Methodology: a) All labs for 'Adequacy of Dialysis', 'Nutrition', 'Osteodystrophy', 'Anemia' and 'Diabetes' based on last value of month; b) BP's and #L processed are average of all values for month; c) Access data takes last access of month; d) Values for SGA and 'Infection Control' use most recent result.

**IV. ACCESS**

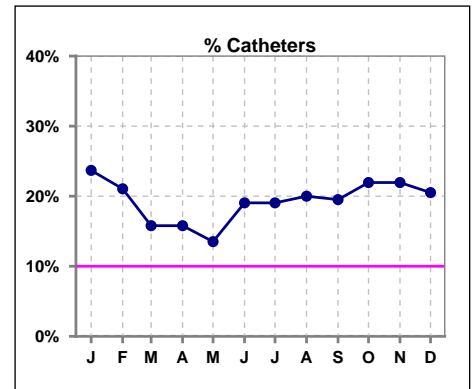
	Jan	Feb	Mar	Apr	May	Jun	Jul	Aug	Sep	Oct	Nov	Dec
<b># Access</b>	38	38	38	38	37	42	42	40	41	41	41	39
<b># Fistula</b>	25	26	28	28	27	28	29	28	28	27	28	26
<b>% Fistula</b>	66%	68%	74%	74%	73%	67%	69%	70%	68%	66%	68%	67%



	Jan	Feb	Mar	Apr	May	Jun	Jul	Aug	Sep	Oct	Nov	Dec
<b># Access</b>	38	38	38	38	37	42	42	40	41	41	41	39
<b># Graft</b>	4	4	4	4	5	6	5	4	5	5	4	5
<b>% Graft</b>	11%	11%	11%	11%	14%	14%	12%	10%	12%	12%	10%	13%



	Jan	Feb	Mar	Apr	May	Jun	Jul	Aug	Sep	Oct	Nov	Dec
<b># Access</b>	38	38	38	38	37	42	42	40	41	41	41	39
<b># Catheters</b>	9	8	6	6	5	8	8	8	8	9	9	8
<b>% Catheters</b>	24%	21%	16%	16%	14%	19%	19%	20%	20%	22%	22%	21%



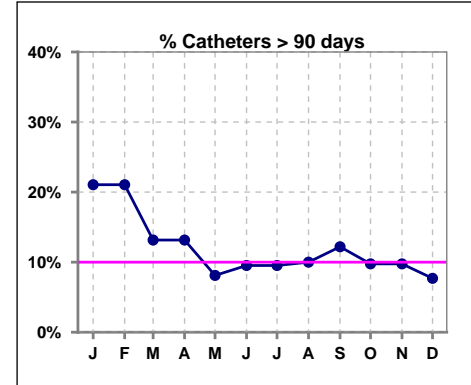
Methodology: a) All labs for 'Adequacy of Dialysis', 'Nutrition', 'Osteodystrophy', 'Anemia' and 'Diabetes' based on last value of month; b) BP's and #L processed are average of all values for month; c) Access data takes last access of month; d) Values for SGA and 'Infection Control' use most recent result.

**IV. ACCESS - CONT.**

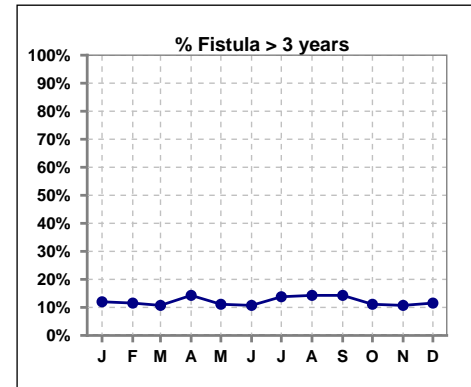
**Catheters > 90 days**

	Jan	Feb	Mar	Apr	May	Jun	Jul	Aug	Sep	Oct	Nov	Dec
<b># Access</b>	38	38	38	38	37	42	42	40	41	41	41	39
<b># Catheters</b>	8	8	5	5	3	4	4	4	5	4	4	3
<b>% Catheters</b>	21%	21%	13%	13%	8%	10%	10%	10%	12%	10%	10%	8%

**Definition:** Catheter in use on last treatment of the month



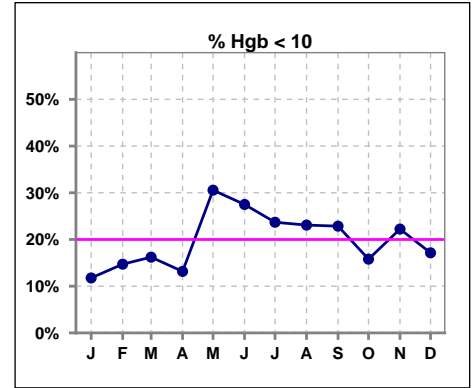
	Jan	Feb	Mar	Apr	May	Jun	Jul	Aug	Sep	Oct	Nov	Dec
<b># Fistula</b>	25	26	28	28	27	28	29	28	28	27	28	26
<b># Fistula &gt; 3 yrs</b>	3	3	3	4	3	3	4	4	4	3	3	3
<b>% Fistula &gt; 3 yrs</b>	12%	12%	11%	14%	11%	11%	14%	14%	14%	11%	11%	12%



**V. ANEMIA**

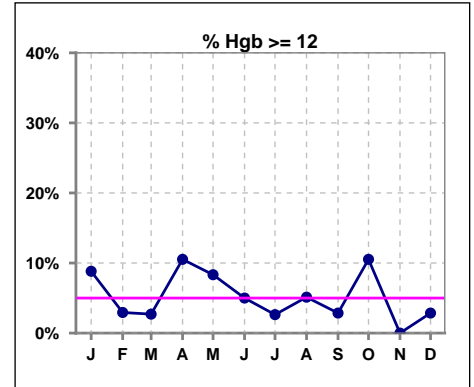
	Jan	Feb	Mar	Apr	May	Jun	Jul	Aug	Sep	Oct	Nov	Dec
# Hgb	34	34	37	38	36	40	38	39	35	38	36	35
# Hgb < 10	4	5	6	5	11	11	9	9	8	6	8	6
Pop. Mean	10.9	10.8	10.8	10.9	10.7	10.6	10.3	10.5	10.5	10.8	10.7	10.9
Std. Deviation	0.9	0.9	0.9	1.0	1.3	1.2	1.0	1.2	1.2	1.1	1.0	1.2
% Hgb < 10	12%	15%	16%	13%	31%	28%	24%	23%	23%	16%	22%	17%

Note: Excludes patients who received no ESA in month.



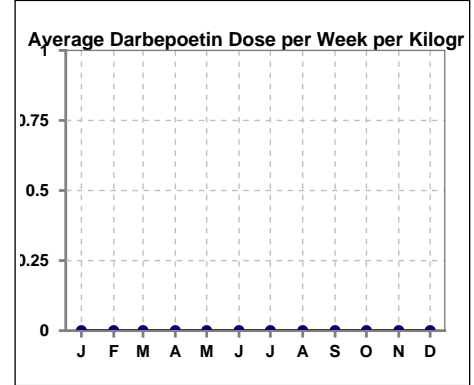
	Jan	Feb	Mar	Apr	May	Jun	Jul	Aug	Sep	Oct	Nov	Dec
# Hgb	34	34	37	38	36	40	38	39	35	38	36	35
# Hgb >= 12	3	1	1	4	3	2	1	2	1	4	0	1
Pop. Mean	10.9	10.8	10.8	10.9	10.7	10.6	10.3	10.5	10.5	10.8	10.7	10.9
Std. Deviation	0.9	0.9	0.9	1.0	1.3	1.2	1.0	1.2	1.2	1.1	1.0	1.2
% Hgb >= 12	9%	3%	3%	11%	8%	5%	3%	5%	3%	11%	0%	3%

Note: Excludes patients who received no ESA in month.



**Average Darbepoetin Dose per Week per Kilogram**

	Jan	Feb	Mar	Apr	May	Jun	Jul	Aug	Sep	Oct	Nov	Dec
# Average Darbepoetin	0	0	0	0	0	0	0	0	0	0	0	0

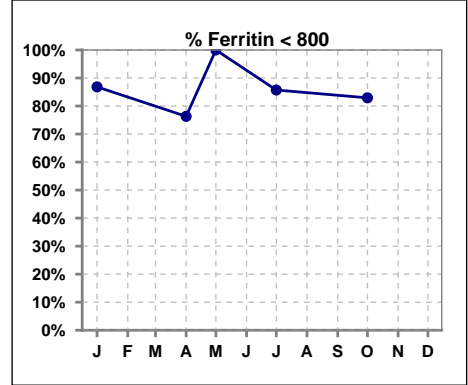




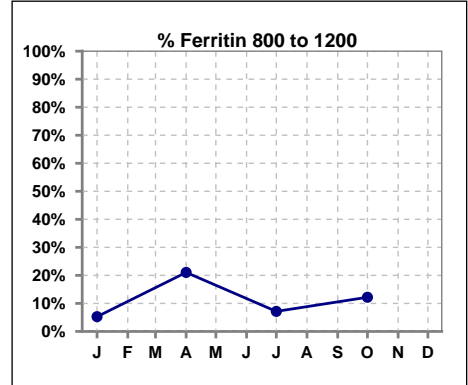
**V. ANEMIA - CONT.**

**Iron Profile**

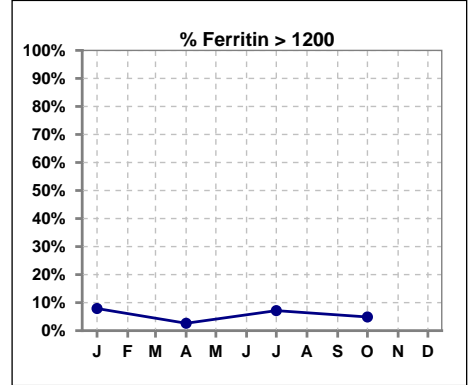
	Jan	Feb	Mar	Apr	May	Jun	Jul	Aug	Sep	Oct	Nov	Dec
# Ferritin	38			38	2		42			41		
# Ferritin < 800	33			29	2		36			34		
Pop. Mean	517			544	86		502			537		
Std. Deviation	341			323	23		364			372		
<b>% Ferritin &lt; 800</b>	<b>87%</b>			<b>76%</b>	<b>100%</b>		<b>86%</b>			<b>83%</b>		



	Jan	Feb	Mar	Apr	May	Jun	Jul	Aug	Sep	Oct	Nov	Dec
# Ferritin	38			38	2		42			41		
# Ferritin 800 to 1200	2			8			3			5		
Pop. Mean	517			544	86		502			537		
Std. Deviation	341			323	23		364			372		
<b>% Ferritin 800 to 1200</b>	<b>5%</b>			<b>21%</b>			<b>7%</b>			<b>12%</b>		



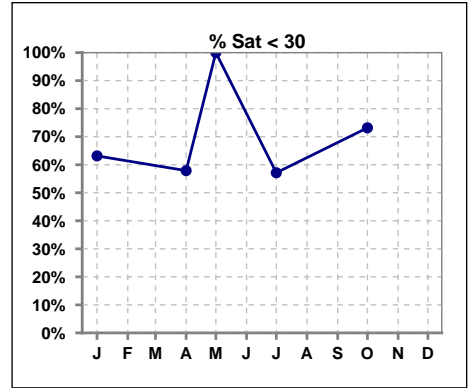
	Jan	Feb	Mar	Apr	May	Jun	Jul	Aug	Sep	Oct	Nov	Dec
# Ferritin	38			38	2		42			41		
# Ferritin > 1200	3			1			3			2		
Pop. Mean	517			544	86		502			537		
Std. Deviation	341			323	23		364			372		
<b>% Ferritin &gt; 1200</b>	<b>8%</b>			<b>3%</b>			<b>7%</b>			<b>5%</b>		



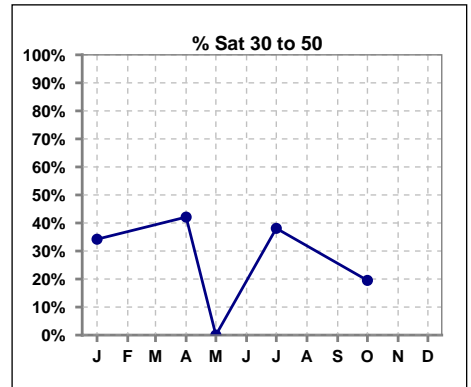
Methodology: a) All labs for 'Adequacy of Dialysis', 'Nutrition', 'Osteodystrophy', 'Anemia' and 'Diabetes' based on last value of month; b) BP's and #L processed are average of all values for month; c) Access data takes last access of month; d) Values for SGA and 'Infection Control' use most recent result.

**V. ANEMIA - CONT.**

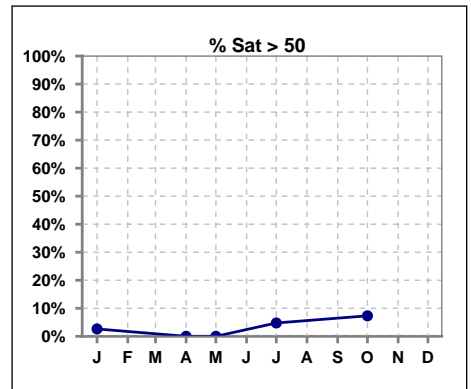
	Jan	Feb	Mar	Apr	May	Jun	Jul	Aug	Sep	Oct	Nov	Dec
# % Sat	38			38	2		42			41		
# % Sat < 30	24			22	2		24			30		
Pop. Mean	28			27	14		29			25		
Std. Deviation	13			10	8		18			15		
<b>% % Sat &lt; 30</b>	<b>63%</b>			<b>58%</b>	<b>100%</b>		<b>57%</b>			<b>73%</b>		



	Jan	Feb	Mar	Apr	May	Jun	Jul	Aug	Sep	Oct	Nov	Dec
# % Sat	38			38	2		42			41		
# % Sat 30 to 50	13			16	0		16			8		
Pop. Mean	28			27	14		29			25		
Std. Deviation	13			10	8		18			15		
<b>% % Sat 30 to 50</b>	<b>34%</b>			<b>42%</b>	<b>0%</b>		<b>38%</b>			<b>20%</b>		

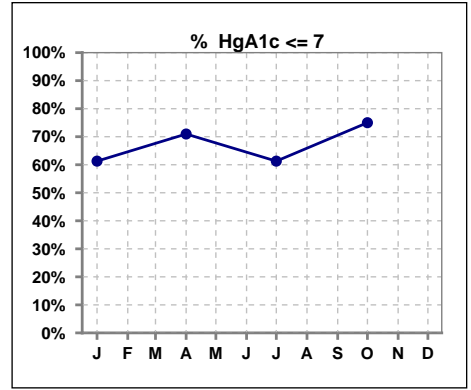


	Jan	Feb	Mar	Apr	May	Jun	Jul	Aug	Sep	Oct	Nov	Dec
# % Sat	38			38	2		42			41		
# % Sat > 50	1			0	0		2			3		
Pop. Mean	28			27	14		29			25		
Std. Deviation	13			10	8		18			15		
<b>% % Sat &gt; 50</b>	<b>3%</b>			<b>0%</b>	<b>0%</b>		<b>5%</b>			<b>7%</b>		



**VI. Diabetes**

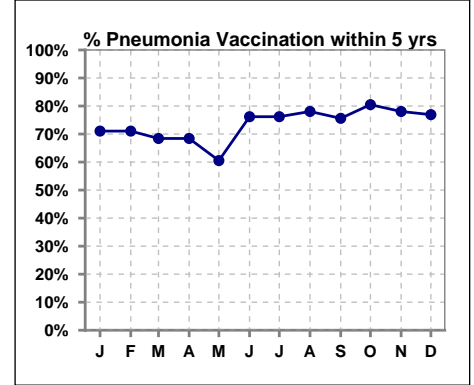
	Jan	Feb	Mar	Apr	May	Jun	Jul	Aug	Sep	Oct	Nov	Dec
# HgA1c	31			31			31			28		
# HgA1c <= 7	19			22			19			21		
Pop. Mean	7.0			6.7			6.8			6.3		
Std. Deviation	1.55			1.27			1.43			1.34		
% HgA1c <= 7	61%			71%			61%			75%		



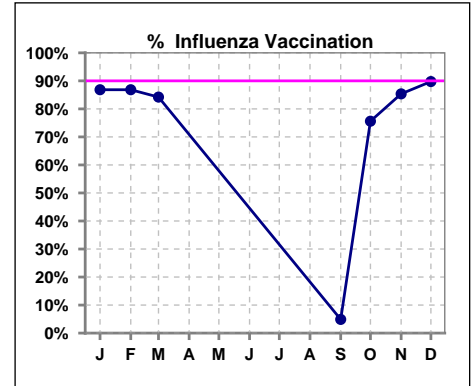
**VII. Infection Control**

**Pneumonia vaccination within the past five years**

	Jan	Feb	Mar	Apr	May	Jun	Jul	Aug	Sep	Oct	Nov	Dec
# Patient	38	38	38	38	38	42	42	41	41	41	41	39
# Pneumonia	27	27	26	26	23	32	32	32	31	33	32	30
% Pneumonia	71%	71%	68%	68%	61%	76%	76%	78%	76%	80%	78%	77%



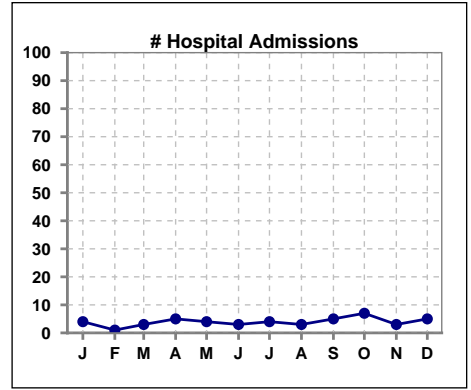
	Jan	Feb	Mar	Apr	May	Jun	Jul	Aug	Sep	Oct	Nov	Dec
# Patient	38	38	38						41	41	41	39
# Influenza	33	33	32						2	31	35	35
% Influenza	87%	87%	84%						5%	76%	85%	90%



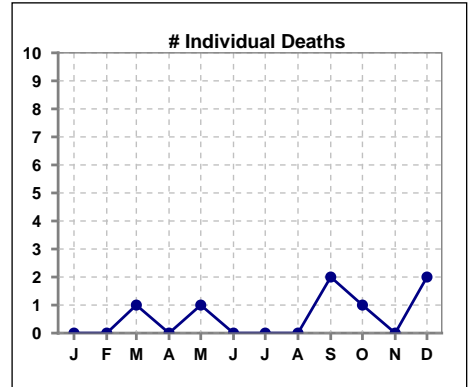
Methodology: a) All labs for 'Adequacy of Dialysis', 'Nutrition', 'Osteodystrophy', 'Anemia' and 'Diabetes' based on last value of month; b) BP's and #L processed are average of all values for month; c) Access data takes last access of month; d) Values for SGA and 'Infection Control' use most recent result.

**VIII. Outcome measures**

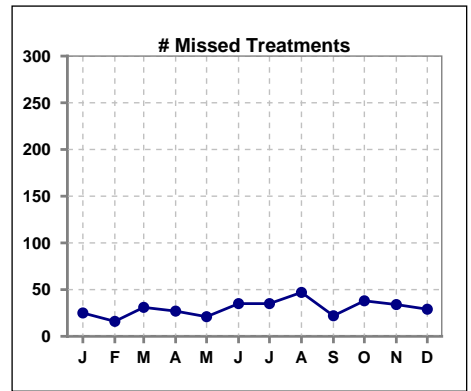
	Jan	Feb	Mar	Apr	May	Jun	Jul	Aug	Sep	Oct	Nov	Dec
# Patient	38	38	38	38	38	42	42	41	41	41	41	39
# Hospital Admissions	4	1	3	5	4	3	4	3	5	7	3	5



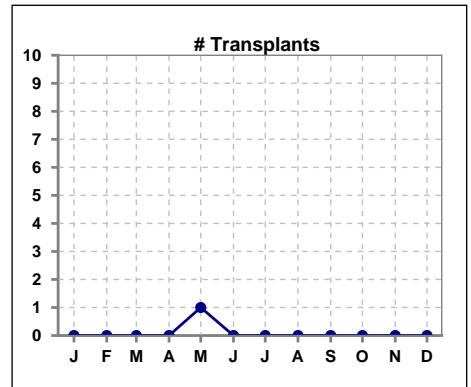
	Jan	Feb	Mar	Apr	May	Jun	Jul	Aug	Sep	Oct	Nov	Dec
# Patient	38	38	38	38	38	42	42	41	41	41	41	39
# Individual Deaths	0	0	1	0	1	0	0	0	2	1	0	2



	Jan	Feb	Mar	Apr	May	Jun	Jul	Aug	Sep	Oct	Nov	Dec
# Patient	38	38	38	38	38	42	42	41	41	41	41	39
# Missed Treatments	25	16	31	27	21	35	35	47	22	38	34	29



	Jan	Feb	Mar	Apr	May	Jun	Jul	Aug	Sep	Oct	Nov	Dec
# Patient	38	38	38	38	38	42	42	41	41	41	41	39
# Transplants	0	0	0	0	1	0	0	0	0	0	0	0



Methodology: a) All labs for 'Adequacy of Dialysis', 'Nutrition', 'Osteodystrophy', 'Anemia' and 'Diabetes' based on last value of month; b) BP's and #L processed are average of all values for month; c) Access data takes last access of month; d) Values for SGA and 'Infection Control' use most recent result.