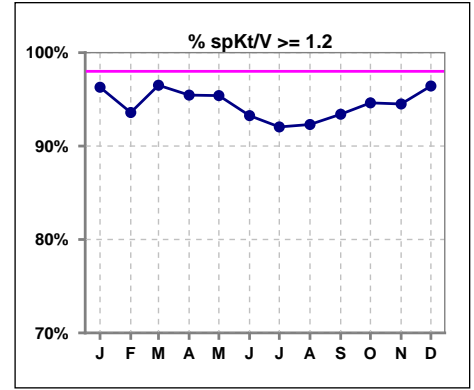
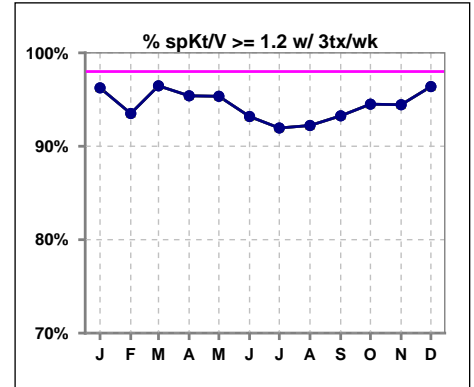


I. ADEQUACY OF DIALYSIS

	Jan	Feb	Mar	Apr	May	Jun	Jul	Aug	Sep	Oct	Nov	Dec
# spKt/V	81	78	86	88	87	89	88	91	91	93	91	84
# spKt/V >= 1.2	78	73	83	84	83	83	81	84	85	88	86	81
Pop. Mean	1.58	1.56	1.56	1.55	1.55	1.54	1.51	1.52	1.60	1.60	1.59	1.60
Std. Deviation	0.35	0.34	0.33	0.31	0.34	0.35	0.32	0.38	0.34	0.35	0.33	0.32
% spKt/V >= 1.2	96%	94%	97%	95%	95%	93%	92%	92%	93%	95%	95%	96%

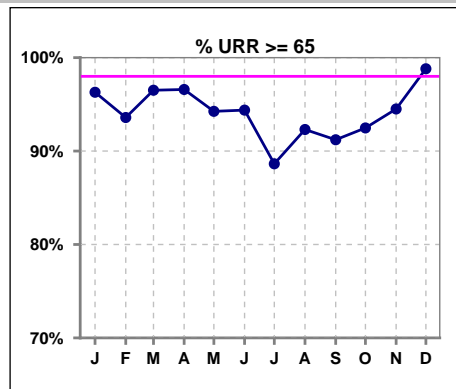


	Jan	Feb	Mar	Apr	May	Jun	Jul	Aug	Sep	Oct	Nov	Dec
# spKt/V w/ 3tx/wk	80	77	85	87	86	88	87	90	89	91	90	83
# spKt/V >= 1.2 w/3tx/wk	77	72	82	83	82	82	80	83	83	86	85	80
Pop. Mean	1.58	1.56	1.56	1.54	1.55	1.53	1.51	1.50	1.59	1.60	1.58	1.60
Std. Deviation	0.35	0.34	0.33	0.31	0.34	0.35	0.32	0.34	0.34	0.35	0.33	0.32
% >= 1.2 w/3tx/wk	96%	94%	96%	95%	95%	93%	92%	92%	93%	95%	94%	96%

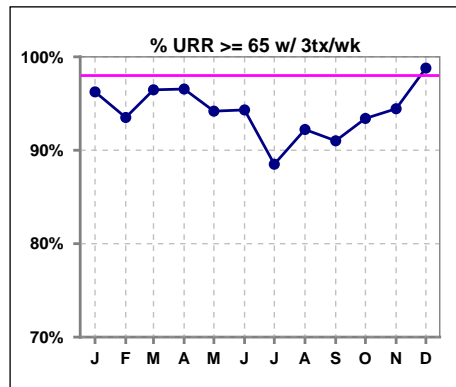


I. ADEQUACY OF DIALYSIS - CONT.

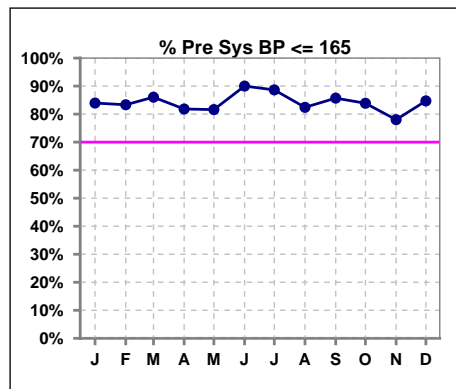
	Jan	Feb	Mar	Apr	May	Jun	Jul	Aug	Sep	Oct	Nov	Dec
# URR	81	78	86	88	87	89	88	91	91	93	91	84
# URR >= 65	78	73	83	85	82	84	78	84	83	86	86	83
Pop. Mean	74	73	73	73	73	73	72	72	74	74	74	74
Std. Deviation	7.06	7.51	6.64	6.09	6.94	8.51	7.29	8.58	7.37	8.58	7.30	6.59
% URR >= 65	96%	94%	97%	97%	94%	94%	89%	92%	91%	92%	95%	99%



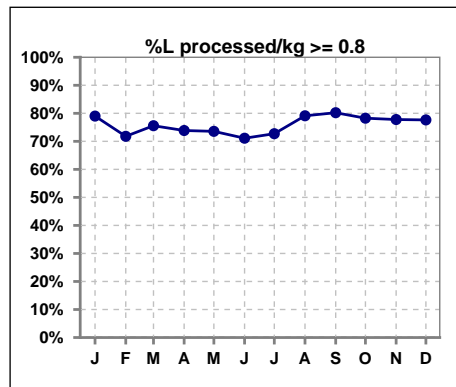
	Jan	Feb	Mar	Apr	May	Jun	Jul	Aug	Sep	Oct	Nov	Dec
# URR w/ 3tx/wk	80	77	85	87	86	88	87	90	89	91	90	83
# URR>=65 w/ 3tx/wk	77	72	82	84	81	83	77	83	81	85	85	82
Pop. Mean	74	73	73	73	73	73	72	72	74	74	74	74
Std. Deviation	7.07	7.52	6.65	6.11	6.97	8.53	7.33	8.35	7.34	8.58	7.29	6.59
% URR>=65 w/ 3tx/wk	96%	94%	96%	97%	94%	94%	89%	92%	91%	93%	94%	99%



	Jan	Feb	Mar	Apr	May	Jun	Jul	Aug	Sep	Oct	Nov	Dec
# Pre Sys BP	81	78	86	88	87	90	88	91	91	93	91	85
# Pre Sys BP <= 165	70	68	74	73	72	83	78	77	80	80	72	73
Pop. Mean	145	147	147	148	145	143	142	144	145	146	147	147
Std. Deviation	19.1	17.7	18.0	18.7	20.0	18.2	18.4	19.2	18.3	19.4	19.0	18.8
% Pre Sys BP <= 165	84%	83%	86%	82%	82%	90%	89%	82%	86%	84%	78%	85%



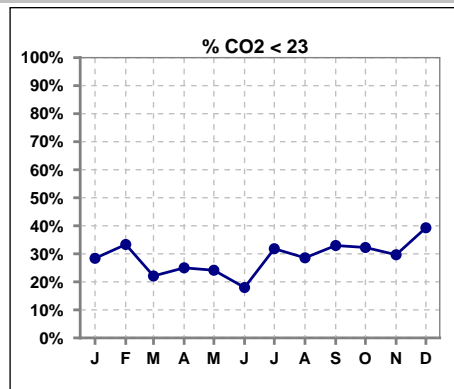
	Jan	Feb	Mar	Apr	May	Jun	Jul	Aug	Sep	Oct	Nov	Dec
# L processed/kg	81	78	86	88	87	90	88	91	91	92	90	85
# L processed/kg >= 0.8	64	56	65	65	64	64	64	72	73	72	70	66
Pop. Mean	1	1	1	1	1	1	1	1	1	1	1	1
Std. Deviation	0.3	0.3	0.3	0.3	0.3	0.3	0.3	0.3	0.3	0.2	0.2	0.2
% L processed/kg >= 0.8	79%	72%	76%	74%	74%	71%	73%	79%	80%	78%	78%	78%



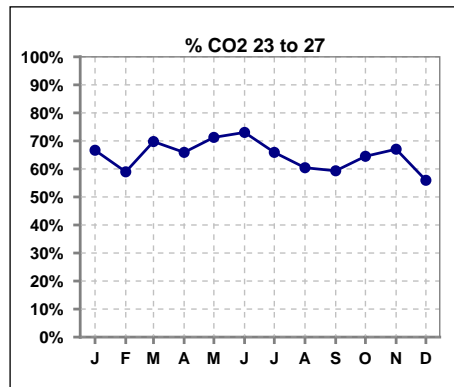
Methodology: a) All labs for 'Adequacy of Dialysis', 'Nutrition', 'Osteodystrophy', 'Anemia' and 'Diabetes' based on last value of month; b) BP's and #L processed are average of all values for month; c) Access data takes last access of month; d) Values for SGA and 'Infection Control' use most recent result.

I. ADEQUACY OF DIALYSIS - CONT.

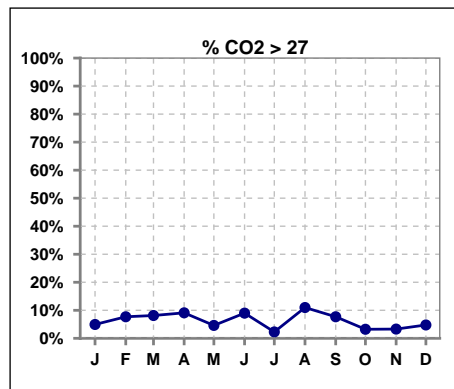
	Jan	Feb	Mar	Apr	May	Jun	Jul	Aug	Sep	Oct	Nov	Dec
# CO2	81	78	86	88	87	89	88	91	91	93	91	84
# CO2 < 23	23	26	19	22	21	16	28	26	30	30	27	33
Pop. Mean	24	24	24	24	24	24	23	24	24	23	23	23
Std. Deviation	2.52	3.02	2.56	2.87	2.45	2.31	2.40	2.95	2.66	2.50	2.50	2.57
% CO2 < 23	28%	33%	22%	25%	24%	18%	32%	29%	33%	32%	30%	39%



	Jan	Feb	Mar	Apr	May	Jun	Jul	Aug	Sep	Oct	Nov	Dec
# CO2	81	78	86	88	87	89	88	91	91	93	91	84
# CO2 23 to 27	54	46	60	58	62	65	58	55	54	60	61	47
Pop. Mean	24	24	24	24	24	24	23	24	24	23	23	23
Std. Deviation	2.52	3.02	2.56	2.87	2.45	2.31	2.40	2.95	2.66	2.50	2.50	2.57
% CO2 23 to 27	67%	59%	70%	66%	71%	73%	66%	60%	59%	65%	67%	56%



	Jan	Feb	Mar	Apr	May	Jun	Jul	Aug	Sep	Oct	Nov	Dec
# CO2	81	78	86	88	87	89	88	91	91	93	91	84
# CO2 > 27	4	6	7	8	4	8	2	10	7	3	3	4
Pop. Mean	24	24	24	24	24	24	23	24	24	23	23	23
Std. Deviation	2.52	3.02	2.56	2.87	2.45	2.31	2.40	2.95	2.66	2.50	2.50	2.57
% CO2 > 27	5%	8%	8%	9%	5%	9%	2%	11%	8%	3%	3%	5%

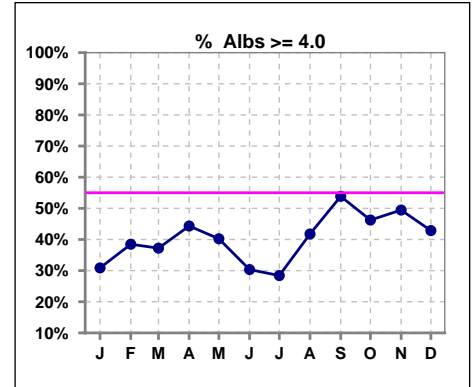


Methodology: a) All labs for 'Adequacy of Dialysis', 'Nutrition', 'Osteodystrophy', 'Anemia' and 'Diabetes' based on last value of month; b) BP's and #L processed are average of all values for month; c) Access data takes last access of month; d) Values for SGA and 'Infection Control' use most recent result.

*Albumin values use BCG method - as of July 2001

II. NUTRITION

	Jan	Feb	Mar	Apr	May	Jun	Jul	Aug	Sep	Oct	Nov	Dec
# Albumin	81	78	86	88	87	89	88	91	91	93	91	84
# Albumin >= 4.0	25	30	32	39	35	27	25	38	49	43	45	36
Pop. Mean	3.8	3.8	3.8	3.8	3.8	3.7	3.7	3.8	3.9	3.8	3.8	3.8
Std. Deviation	0.44	0.39	0.43	0.42	0.40	0.42	0.42	0.42	0.42	0.40	0.48	0.43
% Alb >= 4.0	31%	38%	37%	44%	40%	30%	28%	42%	54%	46%	49%	43%

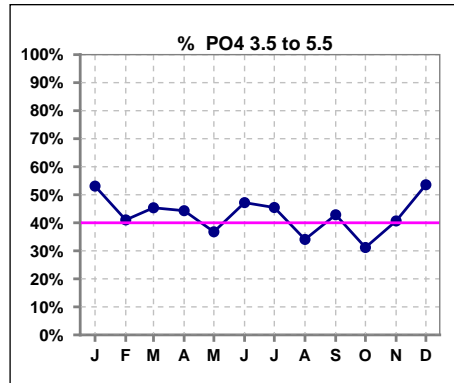


Methodology: a) All labs for 'Adequacy of Dialysis', 'Nutrition', 'Osteodystrophy', 'Anemia' and 'Diabetes' based on last value of month; b) BP's and #L processed are average of all values for month; c) Access data takes last access of month; d) Values for SGA and 'Infection Control' use most recent result.

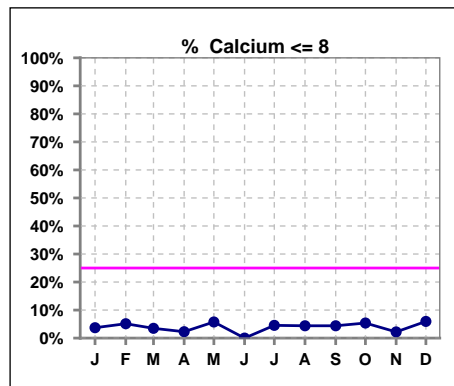
Lab methodology for PTH changed January 2012

III. OSTEODYSTROPHY

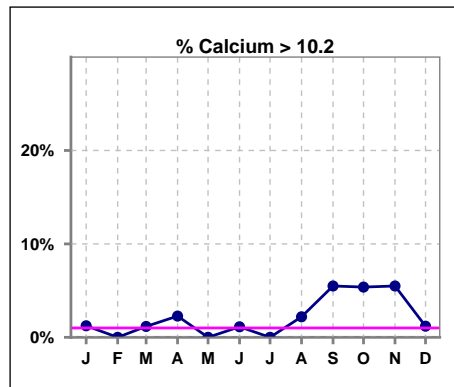
	Jan	Feb	Mar	Apr	May	Jun	Jul	Aug	Sep	Oct	Nov	Dec
# PO4	81	78	86	88	87	89	88	91	91	93	91	84
# PO4 3.5 to 5.5	43	32	39	39	32	42	40	31	39	29	37	45
Pop. Mean	5.6	5.7	5.8	5.7	5.8	5.7	5.6	5.9	5.7	5.8	6.1	5.9
Std. Deviation	1.66	1.70	1.87	1.84	1.78	1.72	1.81	1.88	1.83	2.12	2.26	1.90
% PO4 3.5 to 5.5	53%	41%	45%	44%	37%	47%	45%	34%	43%	31%	41%	54%



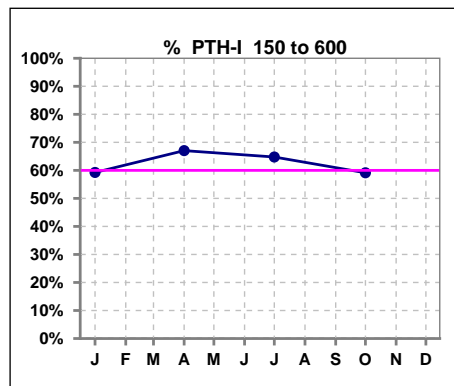
	Jan	Feb	Mar	Apr	May	Jun	Jul	Aug	Sep	Oct	Nov	Dec
# Calcium	81	78	86	88	87	89	88	91	91	93	91	84
# Calcium <= 8	3	4	3	2	5	0	4	4	4	5	2	5
Pop. Mean	9.1	9.2	9.2	9.2	9.1	9.3	9.1	9.3	9.3	9.2	9.3	9.1
Std. Deviation	0.64	0.58	0.62	0.65	0.60	0.56	0.67	0.64	0.70	0.69	0.68	0.66
% Calcium <= 8	4%	5%	3%	2%	6%	0%	5%	4%	4%	5%	2%	6%



	Jan	Feb	Mar	Apr	May	Jun	Jul	Aug	Sep	Oct	Nov	Dec
# Calcium	81	78	86	88	87	89	88	91	91	93	91	84
# Calcium > 10.2	1	0	1	2	0	1	0	2	5	5	5	1
Pop. Mean	9.1	9.2	9.2	9.2	9.1	9.3	9.1	9.3	9.3	9.2	9.3	9.1
Std. Deviation	0.64	0.58	0.62	0.65	0.60	0.56	0.67	0.64	0.70	0.69	0.68	0.66
% Calcium > 10.2	1%	0%	1%	2%	0%	1%	0%	2%	5%	5%	5%	1%



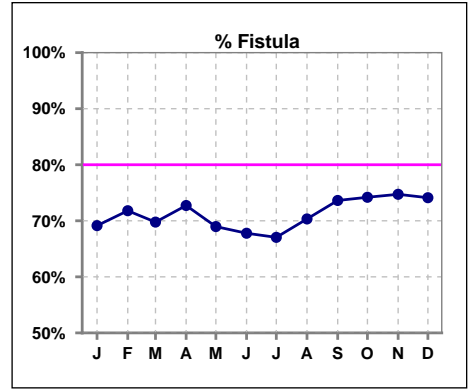
	Jan	Feb	Mar	Apr	May	Jun	Jul	Aug	Sep	Oct	Nov	Dec
# PTH-I	81			88			88			93		
# PTH-I 150 to 600	48			59			57			55		
Pop. Mean	473			475			480			451		
Std. Deviation	337			335			373			403		
% PTH-I 150 to 600	59%			67%			65%			59%		



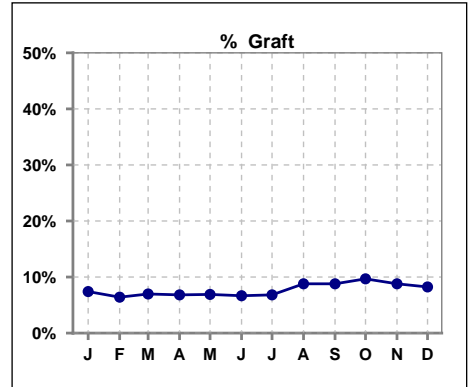
Methodology: a) All labs for 'Adequacy of Dialysis', 'Nutrition', 'Osteodystrophy', 'Anemia' and 'Diabetes' based on last value of month; b) BP's and #L processed are average of all values for month; c) Access data takes last access of month; d) Values for SGA and 'Infection Control' use most recent result.

IV. ACCESS

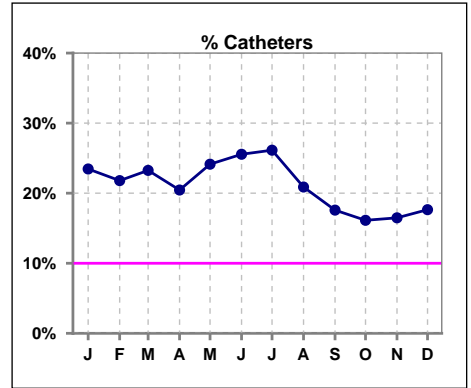
	Jan	Feb	Mar	Apr	May	Jun	Jul	Aug	Sep	Oct	Nov	Dec
# Access	81	78	86	88	87	90	88	91	91	93	91	85
# Fistula	56	56	60	64	60	61	59	64	67	69	68	63
% Fistula	69%	72%	70%	73%	69%	68%	67%	70%	74%	74%	75%	74%



	Jan	Feb	Mar	Apr	May	Jun	Jul	Aug	Sep	Oct	Nov	Dec
# Access	81	78	86	88	87	90	88	91	91	93	91	85
# Graft	6	5	6	6	6	6	6	8	8	9	8	7
% Graft	7%	6%	7%	7%	7%	7%	7%	9%	9%	10%	9%	8%



	Jan	Feb	Mar	Apr	May	Jun	Jul	Aug	Sep	Oct	Nov	Dec
# Access	81	78	86	88	87	90	88	91	91	93	91	85
# Catheters	19	17	20	18	21	23	23	19	16	15	15	15
% Catheters	23%	22%	23%	20%	24%	26%	26%	21%	18%	16%	16%	18%



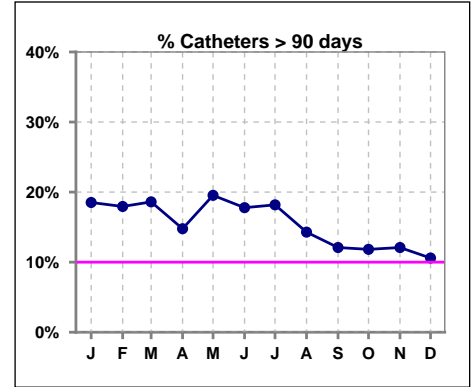
Methodology: a) All labs for 'Adequacy of Dialysis', 'Nutrition', 'Osteodystrophy', 'Anemia' and 'Diabetes' based on last value of month; b) BP's and #L processed are average of all values for month; c) Access data takes last access of month; d) Values for SGA and 'Infection Control' use most recent result.

IV. ACCESS - CONT.

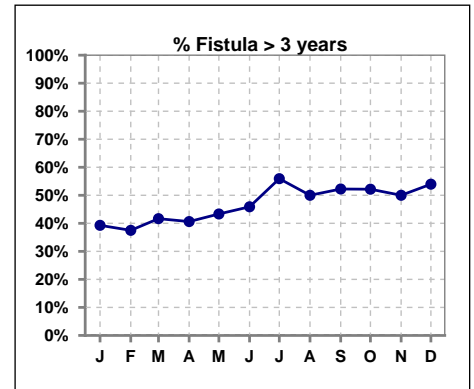
Catheters > 90 days

	Jan	Feb	Mar	Apr	May	Jun	Jul	Aug	Sep	Oct	Nov	Dec
# Access	81	78	86	88	87	90	88	91	91	93	91	85
# Catheters	15	14	16	13	17	16	16	13	11	11	11	9
% Catheters	19%	18%	19%	15%	20%	18%	18%	14%	12%	12%	12%	11%

Definition: Catheter in use on last treatment of the month



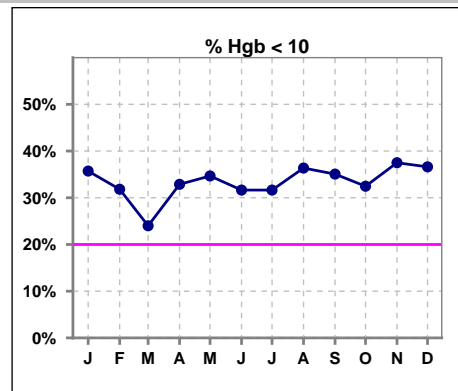
	Jan	Feb	Mar	Apr	May	Jun	Jul	Aug	Sep	Oct	Nov	Dec
# Fistula	56	56	60	64	60	61	59	64	67	69	68	63
# Fistula > 3 yrs	22	21	25	26	26	28	33	32	35	36	34	34
% Fistula > 3 yrs	39%	38%	42%	41%	43%	46%	56%	50%	52%	52%	50%	54%



V. ANEMIA

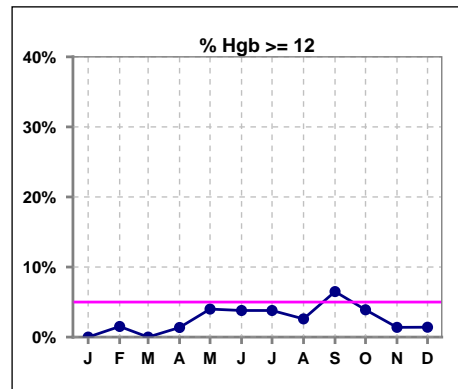
	Jan	Feb	Mar	Apr	May	Jun	Jul	Aug	Sep	Oct	Nov	Dec
# Hgb	70	66	75	73	75	79	79	77	77	77	72	71
# Hgb < 10	25	21	18	24	26	25	25	28	27	25	27	26
Pop. Mean	10.2	10.4	10.4	10.3	10.3	10.5	10.3	10.3	10.4	10.2	10.3	10.2
Std. Deviation	1.2	1.0	1.3	1.2	1.1	1.3	1.2	1.3	1.3	1.4	1.2	1.2
% Hgb < 10	36%	32%	24%	33%	35%	32%	32%	36%	35%	32%	38%	37%

Note: Excludes patients who received no ESA in month.



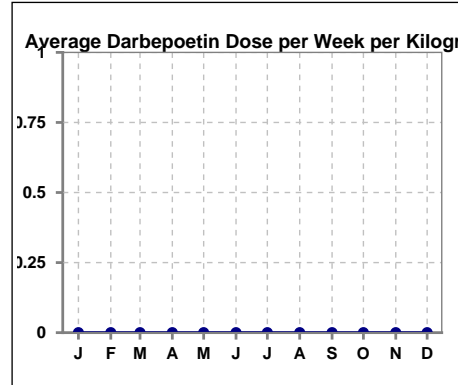
	Jan	Feb	Mar	Apr	May	Jun	Jul	Aug	Sep	Oct	Nov	Dec
# Hgb	70	66	75	73	75	79	79	77	77	77	72	71
# Hgb >= 12	0	1	0	1	3	3	3	2	5	3	1	1
Pop. Mean	10.2	10.4	10.4	10.3	10.3	10.5	10.3	10.3	10.4	10.2	10.3	10.2
Std. Deviation	1.2	1.0	1.3	1.2	1.1	1.3	1.2	1.3	1.3	1.4	1.2	1.2
% Hgb >= 12	0%	2%	0%	1%	4%	4%	4%	3%	6%	4%	1%	1%

Note: Excludes patients who received no ESA in month.



Average Darbepoetin Dose per Week per Kilogram

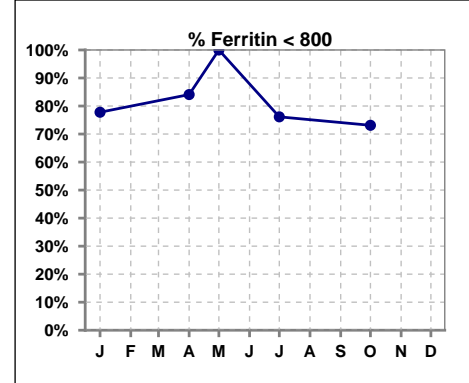
	Jan	Feb	Mar	Apr	May	Jun	Jul	Aug	Sep	Oct	Nov	Dec
# Average Darbepoetin	0	0	0	0	0	0	0	0	0	0	0	0



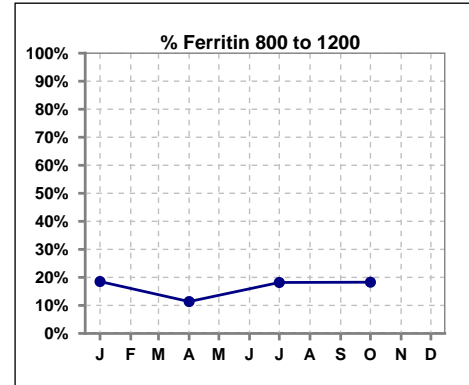
V. ANEMIA - CONT.

Iron Profile

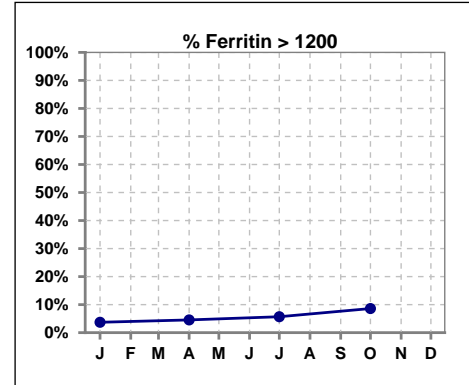
	Jan	Feb	Mar	Apr	May	Jun	Jul	Aug	Sep	Oct	Nov	Dec
# Ferritin	81			88	3		88			93		
# Ferritin < 800	63			74	3		67			68		
Pop. Mean	529			488	128		528			569		
Std. Deviation	362			343	106		364			380		
% Ferritin < 800	78%			84%	100%		76%			73%		



	Jan	Feb	Mar	Apr	May	Jun	Jul	Aug	Sep	Oct	Nov	Dec
# Ferritin	81			88	3		88			93		
# Ferritin 800 to 1200	15			10			16			17		
Pop. Mean	529			488	128		528			569		
Std. Deviation	362			343	106		364			380		
% Ferritin 800 to 1200	19%			11%			18%			18%		

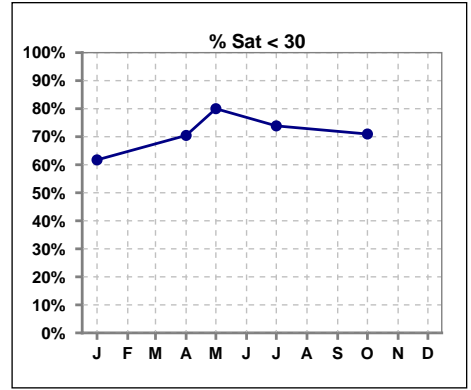


	Jan	Feb	Mar	Apr	May	Jun	Jul	Aug	Sep	Oct	Nov	Dec
# Ferritin	81			88	3		88			93		
# Ferritin > 1200	3			4			5			8		
Pop. Mean	529			488	128		528			569		
Std. Deviation	362			343	106		364			380		
% Ferritin > 1200	4%			5%			6%			9%		

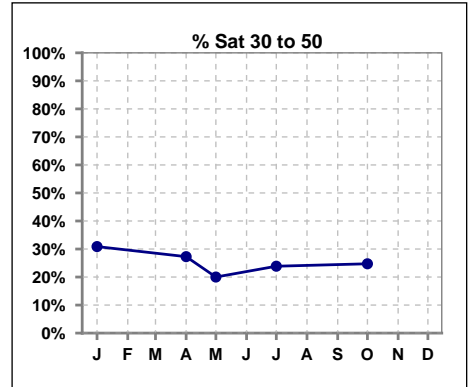


V. ANEMIA - CONT.

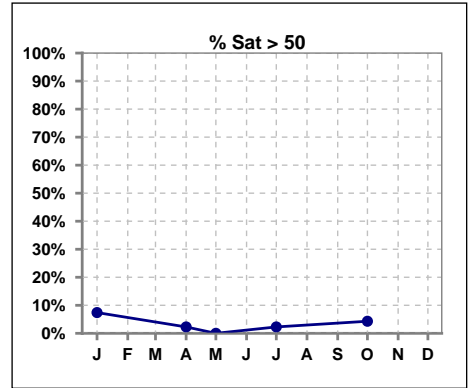
	Jan	Feb	Mar	Apr	May	Jun	Jul	Aug	Sep	Oct	Nov	Dec
# % Sat	81			88	5		88			93		
# % Sat < 30	50			62	4		65			66		
Pop. Mean	29			24	29		24			25		
Std. Deviation	16			10	6		11			14		
% % Sat < 30	62%			70%	80%		74%			71%		



	Jan	Feb	Mar	Apr	May	Jun	Jul	Aug	Sep	Oct	Nov	Dec
# % Sat	81			88	5		88			93		
# % Sat 30 to 50	25			24	1		21			23		
Pop. Mean	29			24	29		24			25		
Std. Deviation	16			10	6		11			14		
% % Sat 30 to 50	31%			27%	20%		24%			25%		

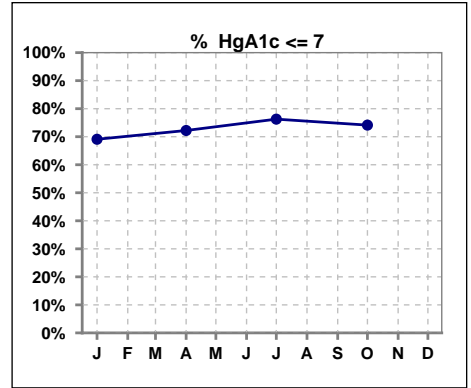


	Jan	Feb	Mar	Apr	May	Jun	Jul	Aug	Sep	Oct	Nov	Dec
# % Sat	81			88	5		88			93		
# % Sat > 50	6			2	0		2			4		
Pop. Mean	29			24	29		24			25		
Std. Deviation	16			10	6		11			14		
% % Sat > 50	7%			2%	0%		2%			4%		



VI. Diabetes

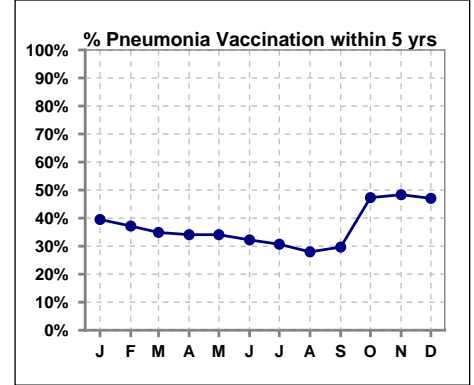
	Jan	Feb	Mar	Apr	May	Jun	Jul	Aug	Sep	Oct	Nov	Dec
# HgA1c	55			54			59			58		
# HgA1c <= 7	38			39			45			43		
Pop. Mean	6.6			6.2			6.2			6.1		
Std. Deviation	1.29			1.26			1.28			1.29		
% HgA1c <= 7	69%			72%			76%			74%		



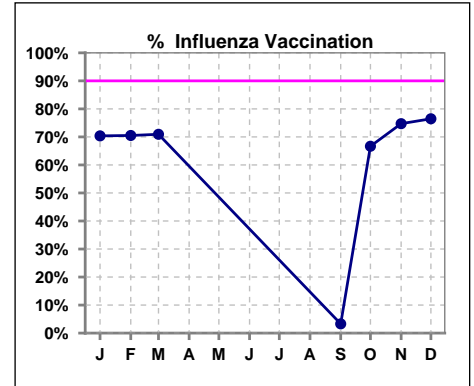
VII. Infection Control

Pneumonia vaccination within the past five years

	Jan	Feb	Mar	Apr	May	Jun	Jul	Aug	Sep	Oct	Nov	Dec
# Patient	81	78	86	88	88	90	88	93	91	93	91	85
# Pneumonia	32	29	30	30	30	29	27	26	27	44	44	40
% Pneumonia	40%	37%	35%	34%	34%	32%	31%	28%	30%	47%	48%	47%



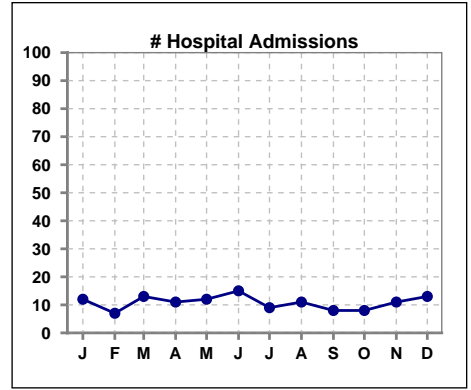
	Jan	Feb	Mar	Apr	May	Jun	Jul	Aug	Sep	Oct	Nov	Dec
# Patient	81	78	86						91	93	91	85
# Influenza	57	55	61						3	62	68	65
% Influenza	70%	71%	71%						3%	67%	75%	76%



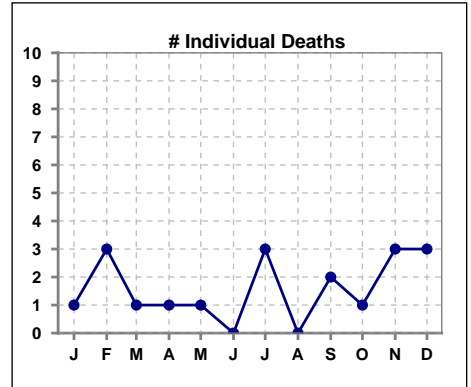
Methodology: a) All labs for 'Adequacy of Dialysis', 'Nutrition', 'Osteodystrophy', 'Anemia' and 'Diabetes' based on last value of month; b) BP's and #L processed are average of all values for month; c) Access data takes last access of month; d) Values for SGA and 'Infection Control' use most recent result.

VIII. Outcome measures

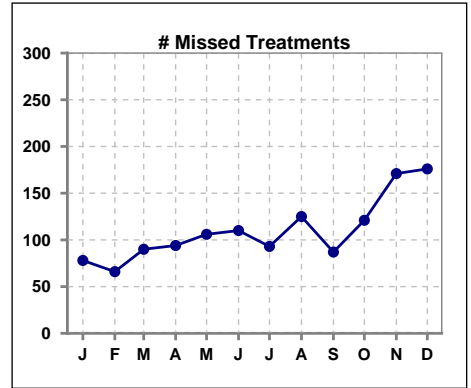
	Jan	Feb	Mar	Apr	May	Jun	Jul	Aug	Sep	Oct	Nov	Dec
# Patient	81	78	86	88	88	90	88	93	91	93	91	85
# Hospital Admissions	12	7	13	11	12	15	9	11	8	8	11	13



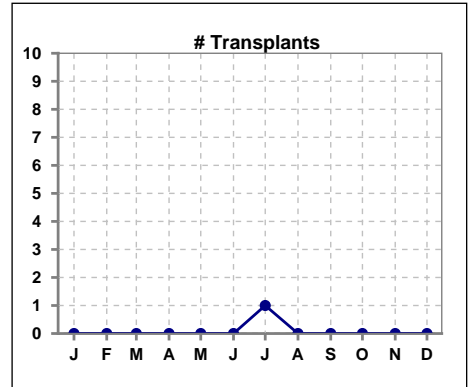
	Jan	Feb	Mar	Apr	May	Jun	Jul	Aug	Sep	Oct	Nov	Dec
# Patient	81	78	86	88	88	90	88	93	91	93	91	85
# Individual Deaths	1	3	1	1	1	0	3	0	2	1	3	3



	Jan	Feb	Mar	Apr	May	Jun	Jul	Aug	Sep	Oct	Nov	Dec
# Patient	81	78	86	88	88	90	88	93	91	93	91	85
# Missed Treatments	78	66	90	94	106	110	93	125	87	121	171	176



	Jan	Feb	Mar	Apr	May	Jun	Jul	Aug	Sep	Oct	Nov	Dec
# Patient	81	78	86	88	88	90	88	93	91	93	91	85
# Transplants	0	0	0	0	0	0	1	0	0	0	0	0



Methodology: a) All labs for 'Adequacy of Dialysis', 'Nutrition', 'Osteodystrophy', 'Anemia' and 'Diabetes' based on last value of month; b) BP's and #L processed are average of all values for month; c) Access data takes last access of month; d) Values for SGA and 'Infection Control' use most recent result.