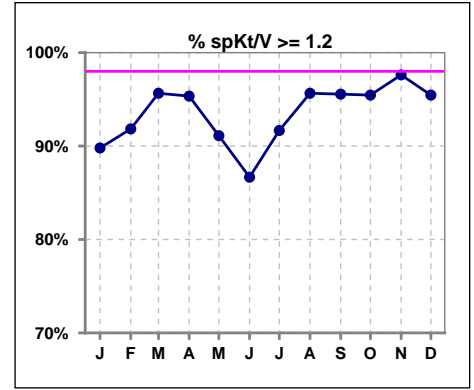
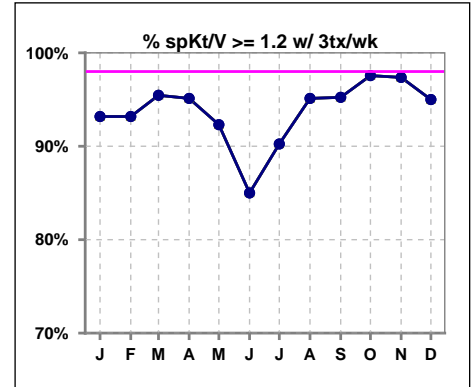


**I. ADEQUACY OF DIALYSIS**

	Jan	Feb	Mar	Apr	May	Jun	Jul	Aug	Sep	Oct	Nov	Dec
# spKt/V	49	49	46	43	45	45	48	46	45	44	42	44
# spKt/V >= 1.2	44	45	44	41	41	39	44	44	43	42	41	42
Pop. Mean	1.55	1.58	1.52	1.51	1.52	1.51	1.49	1.52	1.54	1.60	1.61	1.62
Std. Deviation	0.36	0.37	0.24	0.24	0.27	0.27	0.27	0.22	0.27	0.28	0.28	0.33
% spKt/V >= 1.2	90%	92%	96%	95%	91%	87%	92%	96%	96%	95%	98%	95%

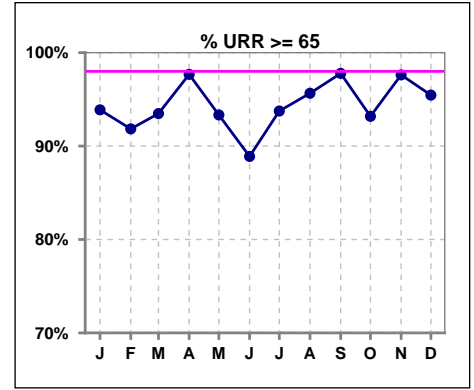


	Jan	Feb	Mar	Apr	May	Jun	Jul	Aug	Sep	Oct	Nov	Dec
# spKt/V w/ 3tx/wk	44	44	44	41	39	40	41	41	42	41	38	40
# spKt/V >= 1.2 w/3tx/wk	41	41	42	39	36	34	37	39	40	40	37	38
Pop. Mean	1.54	1.58	1.52	1.52	1.54	1.53	1.50	1.53	1.55	1.60	1.60	1.61
Std. Deviation	0.34	0.34	0.25	0.24	0.28	0.26	0.27	0.22	0.27	0.28	0.27	0.34
% >= 1.2 w/3tx/wk	93%	93%	95%	95%	92%	85%	90%	95%	95%	98%	97%	95%

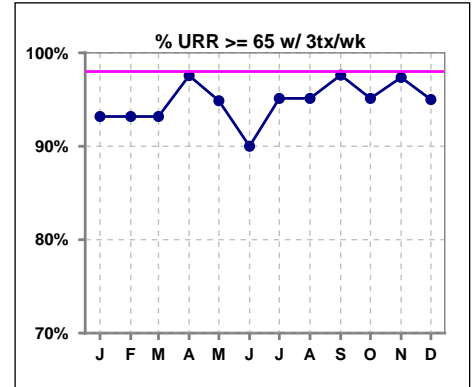


**I. ADEQUACY OF DIALYSIS - CONT.**

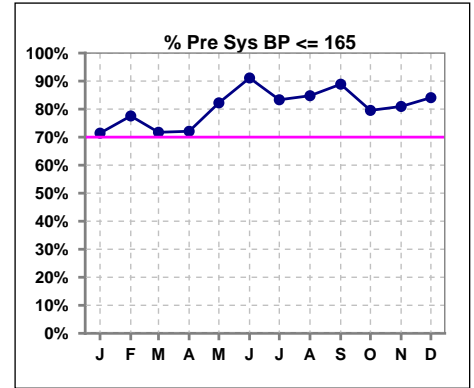
	Jan	Feb	Mar	Apr	May	Jun	Jul	Aug	Sep	Oct	Nov	Dec
# URR	49	49	46	43	45	45	48	46	45	44	42	44
# URR >= 65	46	45	43	42	42	40	45	44	44	41	41	42
Pop. Mean	73	74	73	73	73	73	72	73	73	75	75	75
Std. Deviation	8.95	8.38	6.38	5.91	5.75	6.13	6.23	5.00	5.48	5.97	5.68	7.44
% URR >= 65	94%	92%	93%	98%	93%	89%	94%	96%	98%	93%	98%	95%



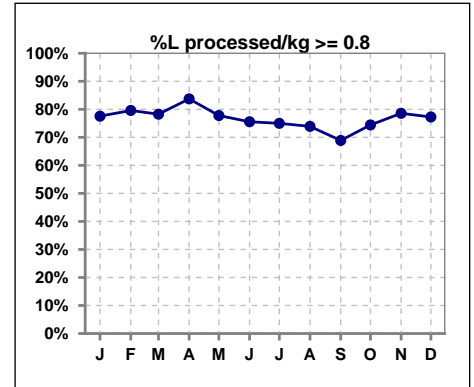
	Jan	Feb	Mar	Apr	May	Jun	Jul	Aug	Sep	Oct	Nov	Dec
# URR w/ 3tx/wk	44	44	44	41	39	40	41	41	42	41	38	40
# URR>=65 w/ 3tx/wk	41	41	41	40	37	36	39	39	41	39	37	38
Pop. Mean	73	74	73	73	73	73	72	73	74	75	75	75
Std. Deviation	8.99	8.35	6.49	5.97	5.80	5.96	6.18	5.16	5.36	5.81	5.60	7.64
% URR>=65 w/ 3tx/wk	93%	93%	93%	98%	95%	90%	95%	95%	98%	95%	97%	95%



	Jan	Feb	Mar	Apr	May	Jun	Jul	Aug	Sep	Oct	Nov	Dec
# Pre Sys BP	49	49	46	43	45	45	48	46	45	44	42	44
# Pre Sys BP <= 165	36	40	35	32	38	41	41	40	40	36	35	38
Pop. Mean	149	149	147	145	144	142	143	145	147	145	145	146
Std. Deviation	21.6	21.7	20.6	20.6	20.1	20.9	23.1	19.9	19.3	22.4	21.6	21.2
%Pre Sys BP <=165	71%	78%	72%	72%	82%	91%	83%	85%	89%	80%	81%	84%



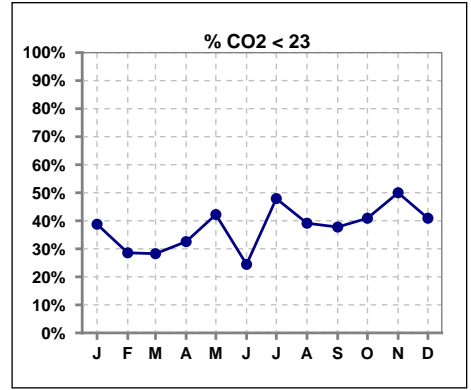
	Jan	Feb	Mar	Apr	May	Jun	Jul	Aug	Sep	Oct	Nov	Dec
# L processed/kg	49	49	46	43	45	45	48	46	45	43	42	44
# L processed/kg>=0.8	38	39	36	36	35	34	36	34	31	32	33	34
Pop. Mean	1	1	1	1	1	1	1	1	1	1	1	1
Std. Deviation	0.3	0.3	0.2	0.2	0.2	0.2	0.2	0.2	0.2	0.2	0.2	0.3
% L processed/kg>=0.8	78%	80%	78%	84%	78%	76%	75%	74%	69%	74%	79%	77%



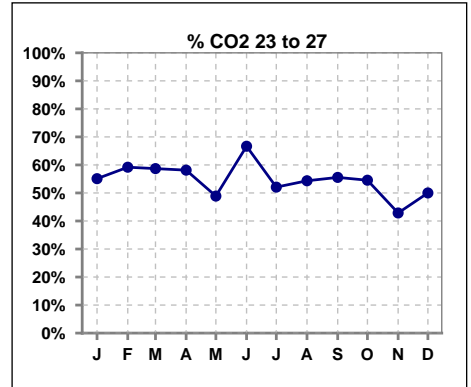
Methodology: a) All labs for 'Adequacy of Dialysis', 'Nutrition', 'Osteodystrophy', 'Anemia' and 'Diabetes' based on last value of month; b) BP's and #L processed are average of all values for month; c) Access data takes last access of month; d) Values for SGA and 'Infection Control' use most recent result.

**I. ADEQUACY OF DIALYSIS - CONT.**

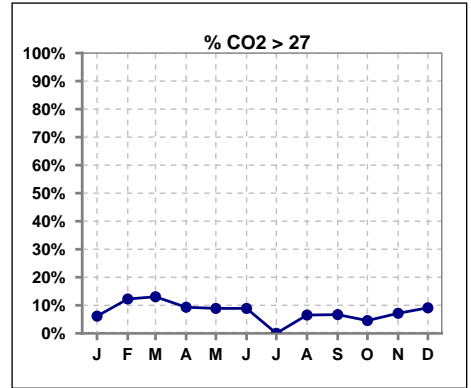
	Jan	Feb	Mar	Apr	May	Jun	Jul	Aug	Sep	Oct	Nov	Dec
# CO2	49	49	46	43	45	45	48	46	45	44	42	44
# CO2 < 23	19	14	13	14	19	11	23	18	17	18	21	18
Pop. Mean	23	24	24	24	23	24	23	23	23	23	23	23
Std. Deviation	2.61	3.57	2.70	2.66	2.83	2.60	2.73	2.83	2.65	2.32	2.93	3.28
<b>% CO2 &lt; 23</b>	<b>39%</b>	<b>29%</b>	<b>28%</b>	<b>33%</b>	<b>42%</b>	<b>24%</b>	<b>48%</b>	<b>39%</b>	<b>38%</b>	<b>41%</b>	<b>50%</b>	<b>41%</b>



	Jan	Feb	Mar	Apr	May	Jun	Jul	Aug	Sep	Oct	Nov	Dec
# CO2	49	49	46	43	45	45	48	46	45	44	42	44
# CO2 23 to 27	27	29	27	25	22	30	25	25	25	24	18	22
Pop. Mean	23	24	24	24	23	24	23	23	23	23	23	23
Std. Deviation	2.61	3.57	2.70	2.66	2.83	2.60	2.73	2.83	2.65	2.32	2.93	3.28
<b>% CO2 23 to 27</b>	<b>55%</b>	<b>59%</b>	<b>59%</b>	<b>58%</b>	<b>49%</b>	<b>67%</b>	<b>52%</b>	<b>54%</b>	<b>56%</b>	<b>55%</b>	<b>43%</b>	<b>50%</b>



	Jan	Feb	Mar	Apr	May	Jun	Jul	Aug	Sep	Oct	Nov	Dec
# CO2	49	49	46	43	45	45	48	46	45	44	42	44
# CO2 > 27	3	6	6	4	4	4	0	3	3	2	3	4
Pop. Mean	23	24	24	24	23	24	23	23	23	23	23	23
Std. Deviation	2.61	3.57	2.70	2.66	2.83	2.60	2.73	2.83	2.65	2.32	2.93	3.28
<b>% CO2 &gt; 27</b>	<b>6%</b>	<b>12%</b>	<b>13%</b>	<b>9%</b>	<b>9%</b>	<b>9%</b>	<b>0%</b>	<b>7%</b>	<b>7%</b>	<b>5%</b>	<b>7%</b>	<b>9%</b>

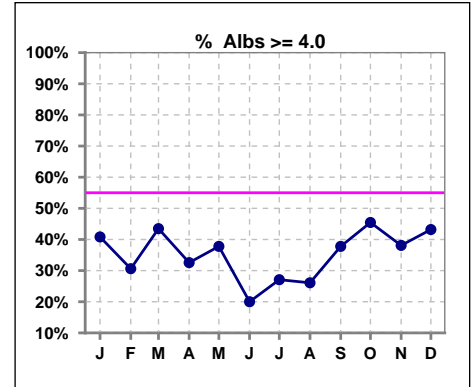


Methodology: a) All labs for 'Adequacy of Dialysis', 'Nutrition', 'Osteodystrophy', 'Anemia' and 'Diabetes' based on last value of month; b) BP's and #L processed are average of all values for month; c) Access data takes last access of month; d) Values for SGA and 'Infection Control' use most recent result.

\*Albumin values use BCG method - as of July 2001

**II. NUTRITION**

	Jan	Feb	Mar	Apr	May	Jun	Jul	Aug	Sep	Oct	Nov	Dec
# Albumin	49	49	46	43	45	45	48	46	45	44	42	44
# Albumin >= 4.0	20	15	20	14	17	9	13	12	17	20	16	19
Pop. Mean	3.8	3.8	3.8	3.8	3.8	3.7	3.7	3.7	3.8	3.9	3.8	3.9
Std. Deviation	0.36	0.31	0.35	0.38	0.39	0.38	0.46	0.40	0.31	0.32	0.30	0.31
% Alb >= 4.0	41%	31%	43%	33%	38%	20%	27%	26%	38%	45%	38%	43%

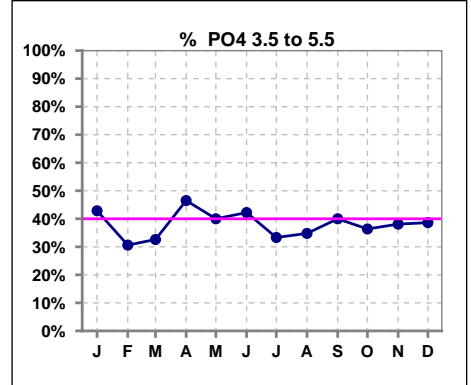


Methodology: a) All labs for 'Adequacy of Dialysis', 'Nutrition', 'Osteodystrophy', 'Anemia' and 'Diabetes' based on last value of month; b) BP's and #L processed are average of all values for month; c) Access data takes last access of month; d) Values for SGA and 'Infection Control' use most recent result.

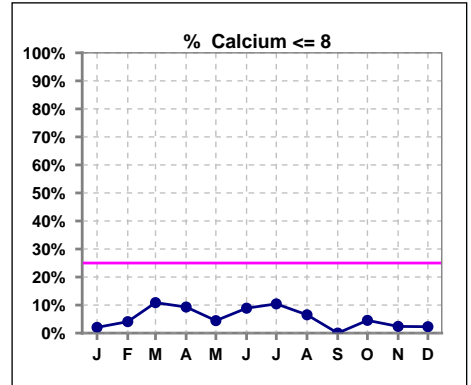
Lab methodology for PTH changed January 2012

**III. OSTEODYSTROPHY**

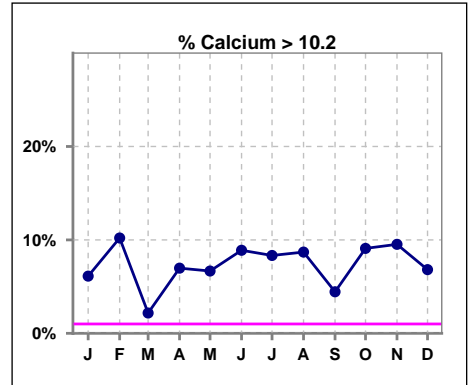
	Jan	Feb	Mar	Apr	May	Jun	Jul	Aug	Sep	Oct	Nov	Dec
# PO4	49	49	46	43	45	45	48	46	45	44	42	44
# PO4 3.5 to 5.5	21	15	15	20	18	19	16	16	18	16	16	17
Pop. Mean	6.0	5.6	5.6	5.6	5.7	5.4	5.7	5.7	5.8	5.7	5.5	5.5
Std. Deviation	2.14	2.07	1.77	1.62	1.85	1.50	1.95	1.68	1.70	1.59	1.54	1.56
% PO4 3.5 to 5.5	43%	31%	33%	47%	40%	42%	33%	35%	40%	36%	38%	39%



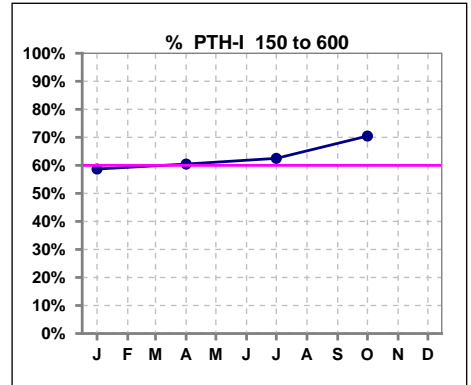
	Jan	Feb	Mar	Apr	May	Jun	Jul	Aug	Sep	Oct	Nov	Dec
# Calcium	49	49	46	43	45	45	48	46	45	44	42	44
# Calcium <= 8	1	2	5	4	2	4	5	3	0	2	1	1
Pop. Mean	9.2	9.4	9.1	9.2	9.1	9.2	9.1	9.2	9.3	9.2	9.3	9.3
Std. Deviation	0.69	0.74	0.71	0.75	0.76	0.83	0.91	0.74	0.63	0.73	0.72	0.63
% Calcium <= 8	2%	4%	11%	9%	4%	9%	10%	7%	0%	5%	2%	2%



	Jan	Feb	Mar	Apr	May	Jun	Jul	Aug	Sep	Oct	Nov	Dec
# Calcium	49	49	46	43	45	45	48	46	45	44	42	44
# Calcium > 10.2	3	5	1	3	3	4	4	4	2	4	4	3
Pop. Mean	9.2	9.4	9.1	9.2	9.1	9.2	9.1	9.2	9.3	9.2	9.3	9.3
Std. Deviation	0.69	0.74	0.71	0.75	0.76	0.83	0.91	0.74	0.63	0.73	0.72	0.63
% Calcium > 10.2	6%	10%	2%	7%	7%	9%	8%	9%	4%	9%	10%	7%



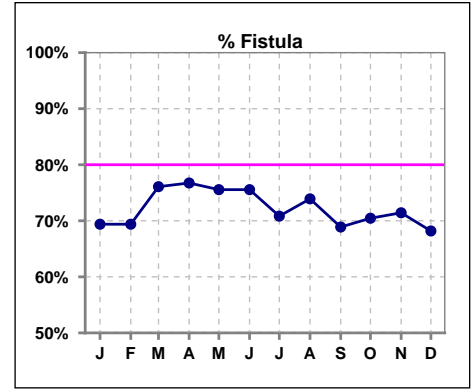
	Jan	Feb	Mar	Apr	May	Jun	Jul	Aug	Sep	Oct	Nov	Dec
# PTH-I	46			43			48			44		
# PTH-I 150 to 600	27			26			30			31		
Pop. Mean	485			572			505			568		
Std. Deviation	494			515			373			562		
% PTH-I 150 to 600	59%			60%			63%			70%		



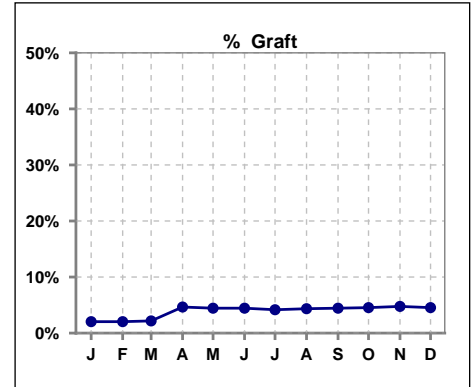
Methodology: a) All labs for 'Adequacy of Dialysis', 'Nutrition', 'Osteodystrophy', 'Anemia' and 'Diabetes' based on last value of month; b) BP's and #L processed are average of all values for month; c) Access data takes last access of month; d) Values for SGA and 'Infection Control' use most recent result.

**IV. ACCESS**

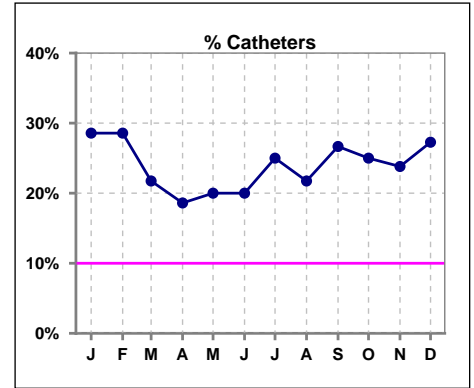
	Jan	Feb	Mar	Apr	May	Jun	Jul	Aug	Sep	Oct	Nov	Dec
<b># Access</b>	49	49	46	43	45	45	48	46	45	44	42	44
<b># Fistula</b>	34	34	35	33	34	34	34	34	31	31	30	30
<b>% Fistula</b>	69%	69%	76%	77%	76%	76%	71%	74%	69%	70%	71%	68%



	Jan	Feb	Mar	Apr	May	Jun	Jul	Aug	Sep	Oct	Nov	Dec
<b># Access</b>	49	49	46	43	45	45	48	46	45	44	42	44
<b># Graft</b>	1	1	1	2	2	2	2	2	2	2	2	2
<b>% Graft</b>	2%	2%	2%	5%	4%	4%	4%	4%	4%	5%	5%	5%



	Jan	Feb	Mar	Apr	May	Jun	Jul	Aug	Sep	Oct	Nov	Dec
<b># Access</b>	49	49	46	43	45	45	48	46	45	44	42	44
<b># Catheters</b>	14	14	10	8	9	9	12	10	12	11	10	12
<b>% Catheters</b>	29%	29%	22%	19%	20%	20%	25%	22%	27%	25%	24%	27%



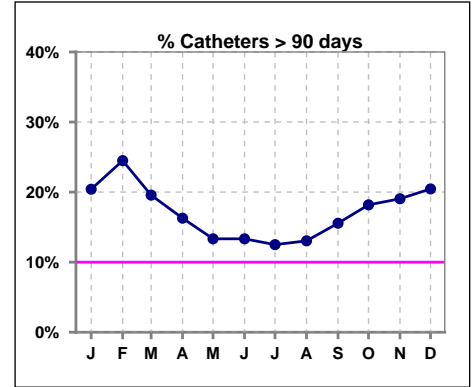
Methodology: a) All labs for 'Adequacy of Dialysis', 'Nutrition', 'Osteodystrophy', 'Anemia' and 'Diabetes' based on last value of month; b) BP's and #L processed are average of all values for month; c) Access data takes last access of month; d) Values for SGA and 'Infection Control' use most recent result.

**IV. ACCESS - CONT.**

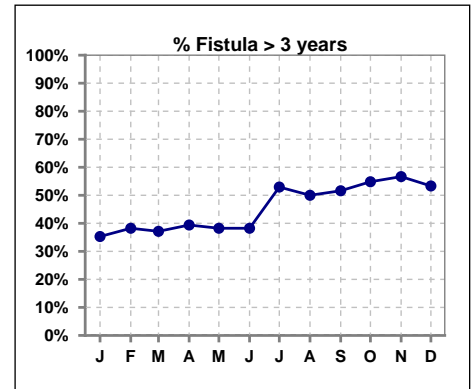
**Catheters > 90 days**

	Jan	Feb	Mar	Apr	May	Jun	Jul	Aug	Sep	Oct	Nov	Dec
<b># Access</b>	49	49	46	43	45	45	48	46	45	44	42	44
<b># Catheters</b>	10	12	9	7	6	6	6	6	7	8	8	9
<b>% Catheters</b>	20%	24%	20%	16%	13%	13%	13%	13%	16%	18%	19%	20%

**Definition:** Catheter in use on last treatment of the month



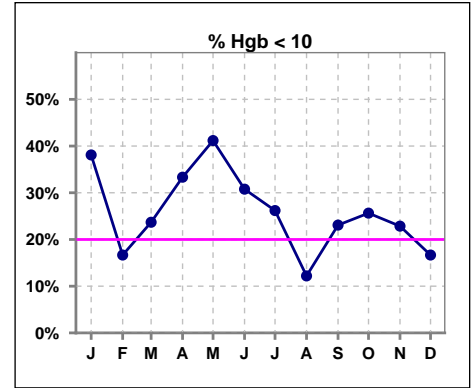
	Jan	Feb	Mar	Apr	May	Jun	Jul	Aug	Sep	Oct	Nov	Dec
<b># Fistula</b>	34	34	35	33	34	34	34	34	31	31	30	30
<b># Fistula &gt; 3 yrs</b>	12	13	13	13	13	13	18	17	16	17	17	16
<b>% Fistula &gt; 3 yrs</b>	35%	38%	37%	39%	38%	38%	53%	50%	52%	55%	57%	53%



**V. ANEMIA**

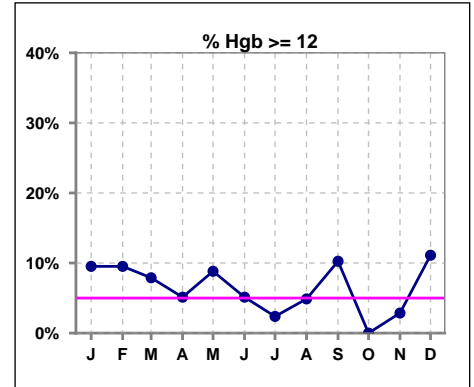
	Jan	Feb	Mar	Apr	May	Jun	Jul	Aug	Sep	Oct	Nov	Dec
# Hgb	42	42	38	39	34	39	42	41	39	39	35	36
# Hgb < 10	16	7	9	13	14	12	11	5	9	10	8	6
Pop. Mean	10.3	10.7	10.7	10.4	10.4	10.4	10.4	10.8	10.9	10.5	10.6	10.8
Std. Deviation	1.3	1.2	1.0	1.4	1.3	1.2	1.2	1.0	1.4	1.1	0.9	1.0
% Hgb < 10	38%	17%	24%	33%	41%	31%	26%	12%	23%	26%	23%	17%

Note: Excludes patients who received no ESA in month.



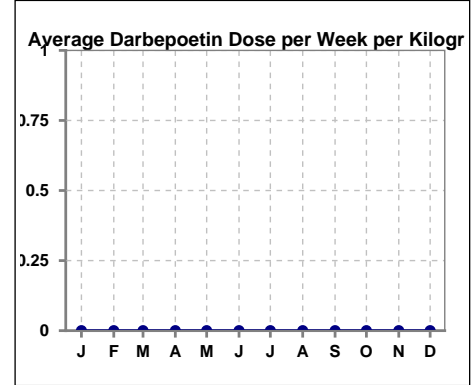
	Jan	Feb	Mar	Apr	May	Jun	Jul	Aug	Sep	Oct	Nov	Dec
# Hgb	42	42	38	39	34	39	42	41	39	39	35	36
# Hgb >= 12	4	4	3	2	3	2	1	2	4	0	1	4
Pop. Mean	10.3	10.7	10.7	10.4	10.4	10.4	10.4	10.8	10.9	10.5	10.6	10.8
Std. Deviation	1.3	1.2	1.0	1.4	1.3	1.2	1.2	1.0	1.4	1.1	0.9	1.0
% Hgb >= 12	10%	10%	8%	5%	9%	5%	2%	5%	10%	0%	3%	11%

Note: Excludes patients who received no ESA in month.



**Average Darbepoetin Dose per Week per Kilogram**

	Jan	Feb	Mar	Apr	May	Jun	Jul	Aug	Sep	Oct	Nov	Dec
# Average Darbepoetin	0	0	0	0	0	0	0	0	0	0	0	0



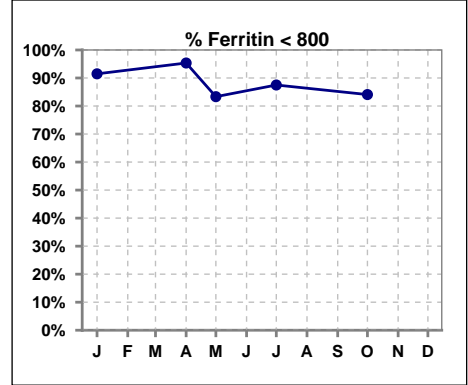
Methodology: a) All labs for 'Adequacy of Dialysis', 'Nutrition', 'Osteodystrophy', 'Anemia' and 'Diabetes' based on last value of month; b) BP's and #L processed are average of all values for month; c) Access data takes last access of month; d) Values for SGA and 'Infection Control' use most recent result.



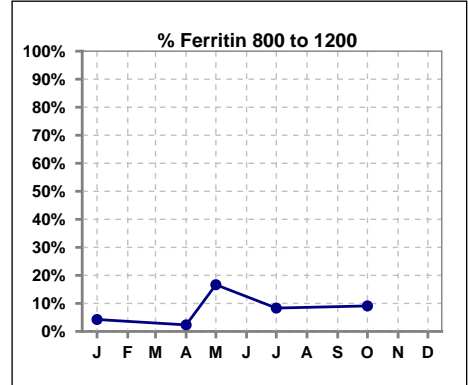
**V. ANEMIA - CONT.**

**Iron Profile**

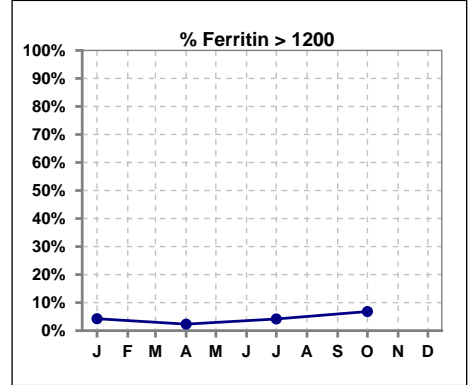
	Jan	Feb	Mar	Apr	May	Jun	Jul	Aug	Sep	Oct	Nov	Dec
# Ferritin	47			43	6		48			44		
# Ferritin < 800	43			41	5		42			37		
Pop. Mean	458			444	498		452			491		
Std. Deviation	303			308	309		302			351		
<b>% Ferritin &lt; 800</b>	<b>91%</b>			<b>95%</b>	<b>83%</b>		<b>88%</b>			<b>84%</b>		



	Jan	Feb	Mar	Apr	May	Jun	Jul	Aug	Sep	Oct	Nov	Dec
# Ferritin	47			43	6		48			44		
# Ferritin 800 to 1200	2			1	1		4			4		
Pop. Mean	458			444	498		452			491		
Std. Deviation	303			308	309		302			351		
<b>% Ferritin 800 to 1200</b>	<b>4%</b>			<b>2%</b>	<b>17%</b>		<b>8%</b>			<b>9%</b>		



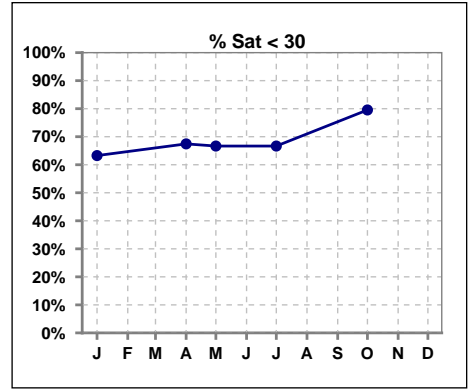
	Jan	Feb	Mar	Apr	May	Jun	Jul	Aug	Sep	Oct	Nov	Dec
# Ferritin	47			43	6		48			44		
# Ferritin > 1200	2			1			2			3		
Pop. Mean	458			444	498		452			491		
Std. Deviation	303			308	309		302			351		
<b>% Ferritin &gt; 1200</b>	<b>4%</b>			<b>2%</b>			<b>4%</b>			<b>7%</b>		



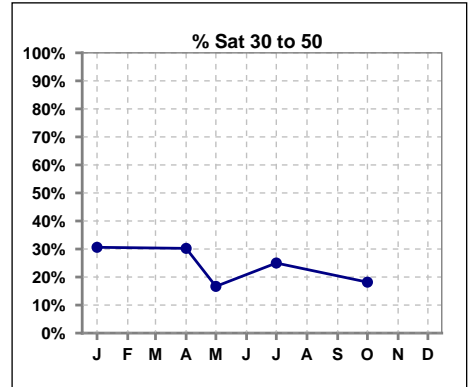
Methodology: a) All labs for 'Adequacy of Dialysis', 'Nutrition', 'Osteodystrophy', 'Anemia' and 'Diabetes' based on last value of month; b) BP's and #L processed are average of all values for month; c) Access data takes last access of month; d) Values for SGA and 'Infection Control' use most recent result.

**V. ANEMIA - CONT.**

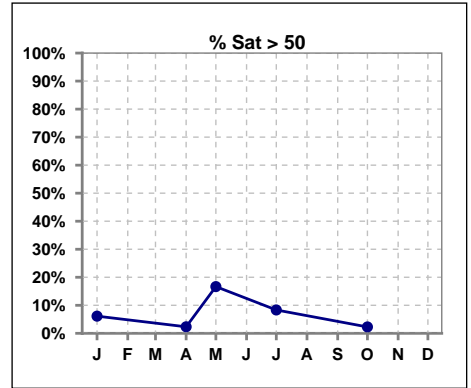
	Jan	Feb	Mar	Apr	May	Jun	Jul	Aug	Sep	Oct	Nov	Dec
# % Sat	49			43	6		48			44		
# % Sat < 30	31			29	4		32			35		
Pop. Mean	30			27	36		27			23		
Std. Deviation	18			15	34		18			14		
<b>% % Sat &lt; 30</b>	<b>63%</b>			<b>67%</b>	<b>67%</b>		<b>67%</b>			<b>80%</b>		



	Jan	Feb	Mar	Apr	May	Jun	Jul	Aug	Sep	Oct	Nov	Dec
# % Sat	49			43	6		48			44		
# % Sat 30 to 50	15			13	1		12			8		
Pop. Mean	30			27	36		27			23		
Std. Deviation	18			15	34		18			14		
<b>% % Sat 30 to 50</b>	<b>31%</b>			<b>30%</b>	<b>17%</b>		<b>25%</b>			<b>18%</b>		



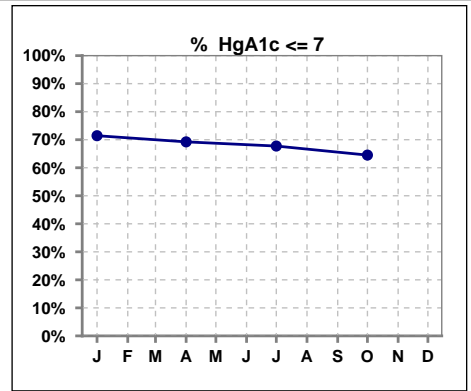
	Jan	Feb	Mar	Apr	May	Jun	Jul	Aug	Sep	Oct	Nov	Dec
# % Sat	49			43	6		48			44		
# % Sat > 50	3			1	1		4			1		
Pop. Mean	30			27	36		27			23		
Std. Deviation	18			15	34		18			14		
<b>% % Sat &gt; 50</b>	<b>6%</b>			<b>2%</b>	<b>17%</b>		<b>8%</b>			<b>2%</b>		



Methodology: a) All labs for 'Adequacy of Dialysis', 'Nutrition', 'Osteodystrophy', 'Anemia' and 'Diabetes' based on last value of month; b) BP's and #L processed are average of all values for month; c) Access data takes last access of month; d) Values for SGA and 'Infection Control' use most recent result.

**VI. Diabetes**

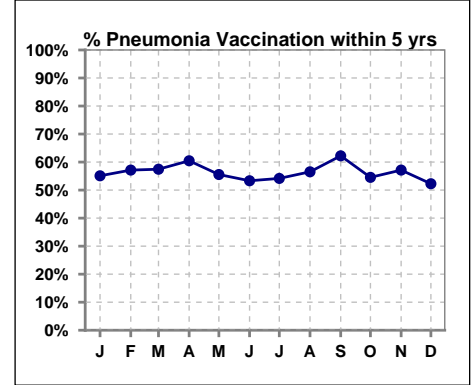
	Jan	Feb	Mar	Apr	May	Jun	Jul	Aug	Sep	Oct	Nov	Dec
# HgA1c	28			26			31			31		
# HgA1c <= 7	20			18			21			20		
Pop. Mean	6.4			6.5			6.3			6.4		
Std. Deviation	1.09			1.53			1.04			1.31		
<b>% HgA1c &lt;= 7</b>	<b>71%</b>			<b>69%</b>			<b>68%</b>			<b>65%</b>		



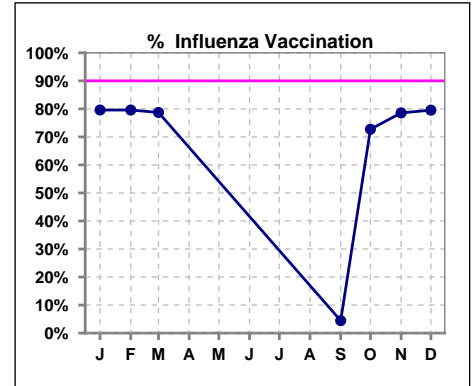
**VII. Infection Control**

**Pneumonia vaccination within the past five years**

	Jan	Feb	Mar	Apr	May	Jun	Jul	Aug	Sep	Oct	Nov	Dec
# Patient	49	49	47	43	45	45	48	46	45	44	42	44
# Pneumonia	27	28	27	26	25	24	26	26	28	24	24	23
<b>% Pneumonia</b>	<b>55%</b>	<b>57%</b>	<b>57%</b>	<b>60%</b>	<b>56%</b>	<b>53%</b>	<b>54%</b>	<b>57%</b>	<b>62%</b>	<b>55%</b>	<b>57%</b>	<b>52%</b>



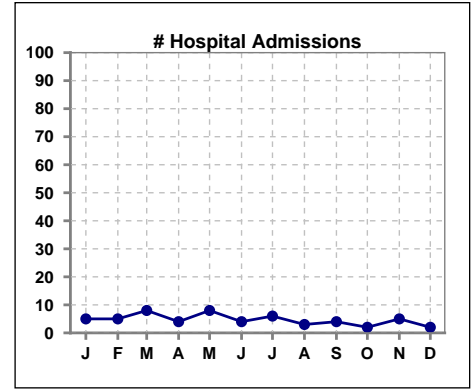
	Jan	Feb	Mar	Apr	May	Jun	Jul	Aug	Sep	Oct	Nov	Dec
# Patient	49	49	47						45	44	42	44
# Influenza	39	39	37						2	32	33	35
<b>% Influenza</b>	<b>80%</b>	<b>80%</b>	<b>79%</b>						<b>4%</b>	<b>73%</b>	<b>79%</b>	<b>80%</b>



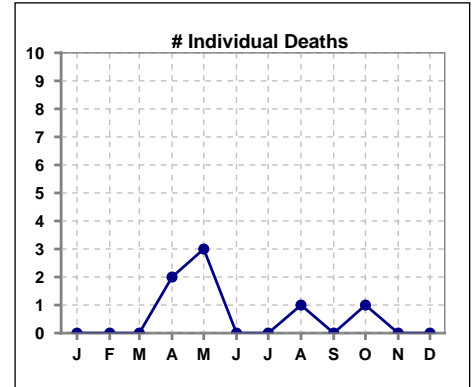
Methodology: a) All labs for 'Adequacy of Dialysis', 'Nutrition', 'Osteodystrophy', 'Anemia' and 'Diabetes' based on last value of month; b) BP's and #L processed are average of all values for month; c) Access data takes last access of month; d) Values for SGA and 'Infection Control' use most recent result.

**VIII. Outcome measures**

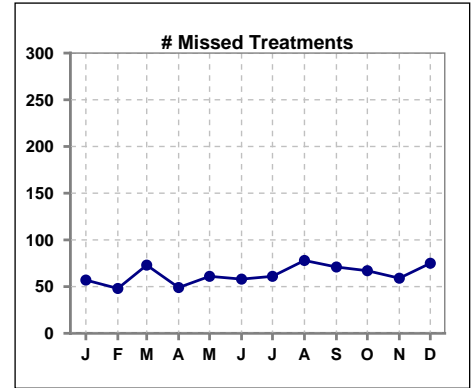
	Jan	Feb	Mar	Apr	May	Jun	Jul	Aug	Sep	Oct	Nov	Dec
<b># Patient</b>	49	49	47	43	45	45	48	46	45	44	42	44
<b># Hospital Admissions</b>	5	5	8	4	8	4	6	3	4	2	5	2



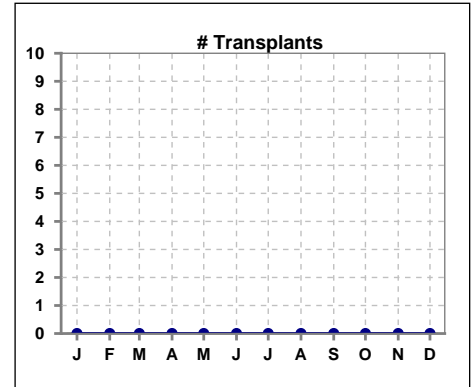
	Jan	Feb	Mar	Apr	May	Jun	Jul	Aug	Sep	Oct	Nov	Dec
<b># Patient</b>	49	49	47	43	45	45	48	46	45	44	42	44
<b># Individual Deaths</b>	0	0	0	2	3	0	0	1	0	1	0	0



	Jan	Feb	Mar	Apr	May	Jun	Jul	Aug	Sep	Oct	Nov	Dec
<b># Patient</b>	49	49	47	43	45	45	48	46	45	44	42	44
<b># Missed Treatments</b>	57	48	73	49	61	58	61	78	71	67	59	75



	Jan	Feb	Mar	Apr	May	Jun	Jul	Aug	Sep	Oct	Nov	Dec
<b># Patient</b>	49	49	47	43	45	45	48	46	45	44	42	44
<b># Transplants</b>	0	0	0	0	0	0	0	0	0	0	0	0



Methodology: a) All labs for 'Adequacy of Dialysis', 'Nutrition', 'Osteodystrophy', 'Anemia' and 'Diabetes' based on last value of month; b) BP's and #L processed are average of all values for month; c) Access data takes last access of month; d) Values for SGA and 'Infection Control' use most recent result.