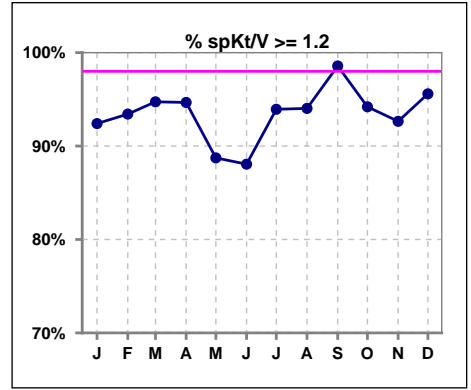
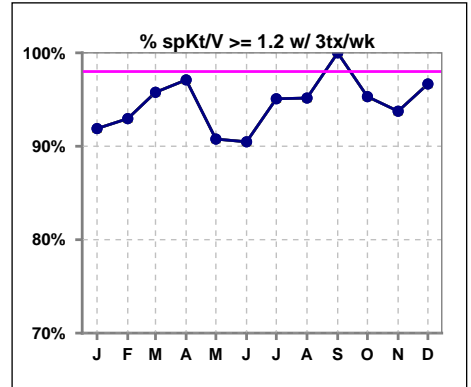


I. ADEQUACY OF DIALYSIS

	Jan	Feb	Mar	Apr	May	Jun	Jul	Aug	Sep	Oct	Nov	Dec
# spKt/V	79	76	76	75	71	67	66	67	70	69	68	68
# spKt/V >= 1.2	73	71	72	71	63	59	62	63	69	65	63	65
Pop. Mean	1.54	1.55	1.55	1.54	1.53	1.54	1.59	1.59	1.65	1.67	1.65	1.65
Std. Deviation	0.31	0.30	0.33	0.38	0.32	0.34	0.28	0.31	0.31	0.42	0.39	0.32
% spKt/V >= 1.2	92%	93%	95%	95%	89%	88%	94%	94%	99%	94%	93%	96%

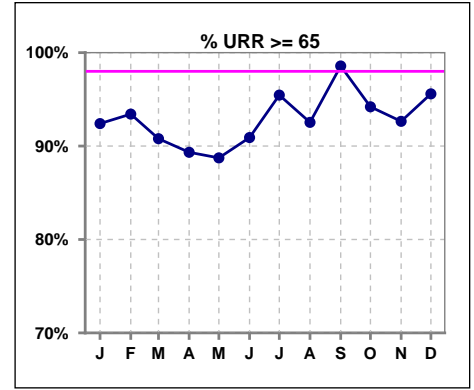


	Jan	Feb	Mar	Apr	May	Jun	Jul	Aug	Sep	Oct	Nov	Dec
# spKt/V w/ 3tx/wk	74	71	71	69	65	63	61	62	64	64	64	60
# spKt/V >= 1.2 w/3tx/wk	68	66	68	67	59	57	58	59	64	61	60	58
Pop. Mean	1.55	1.55	1.56	1.58	1.55	1.56	1.59	1.60	1.68	1.69	1.67	1.67
Std. Deviation	0.31	0.30	0.34	0.37	0.32	0.32	0.28	0.32	0.29	0.42	0.39	0.32
% >= 1.2 w/3tx/wk	92%	93%	96%	97%	91%	90%	95%	95%	100%	95%	94%	97%

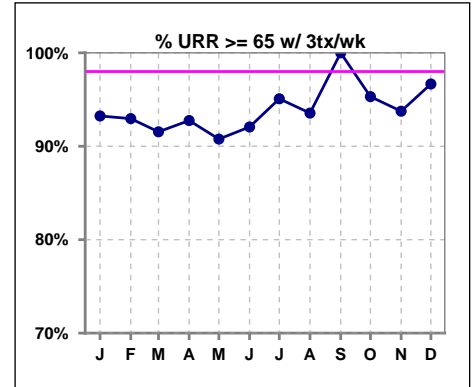


I. ADEQUACY OF DIALYSIS - CONT.

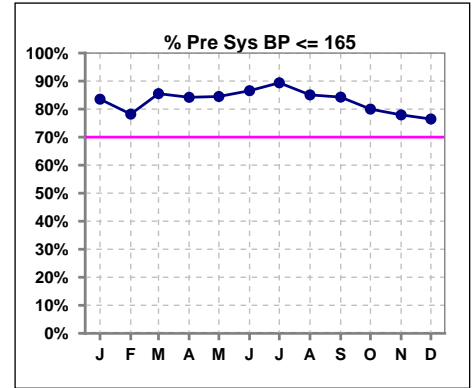
	Jan	Feb	Mar	Apr	May	Jun	Jul	Aug	Sep	Oct	Nov	Dec
# URR	79	76	76	75	71	66	66	67	70	69	68	68
# URR >= 65	73	71	69	67	63	60	63	62	69	65	63	65
Pop. Mean	73	73	73	72	72	73	74	74	75	75	75	75
Std. Deviation	6.96	7.20	7.29	9.08	7.09	7.48	6.46	6.53	6.13	6.90	7.45	7.12
% URR >= 65	92%	93%	91%	89%	89%	91%	95%	93%	99%	94%	93%	96%



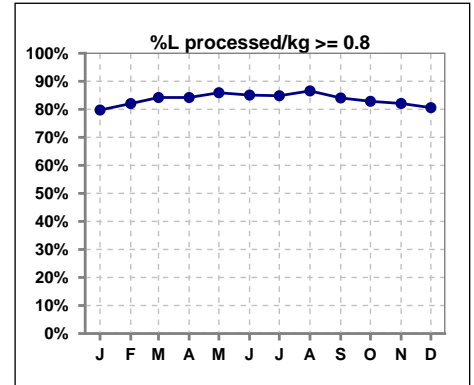
	Jan	Feb	Mar	Apr	May	Jun	Jul	Aug	Sep	Oct	Nov	Dec
# URR w/ 3tx/wk	74	71	71	69	65	63	61	62	64	64	64	60
# URR>=65 w/ 3tx/wk	69	66	65	64	59	58	58	58	64	61	60	58
Pop. Mean	73	73	73	73	73	73	74	74	76	75	75	76
Std. Deviation	7.04	7.35	7.36	8.10	6.72	7.45	6.35	6.49	5.46	6.73	7.26	6.66
% URR>=65 w/ 3tx/wk	93%	93%	92%	93%	91%	92%	95%	94%	100%	95%	94%	97%



	Jan	Feb	Mar	Apr	May	Jun	Jul	Aug	Sep	Oct	Nov	Dec
# Pre Sys BP	79	78	76	76	71	67	66	67	70	70	68	68
# Pre Sys BP <= 165	68	62	67	64	61	58	60	58	60	59	53	54
Pop. Mean	146	148	147	144	146	146	147	145	146	147	149	148
Std. Deviation	20.1	19.8	18.9	20.7	20.4	18.2	18.4	19.7	19.5	18.9	18.5	19.1
%Pre Sys BP <=165	84%	78%	86%	84%	85%	87%	89%	85%	84%	80%	78%	76%



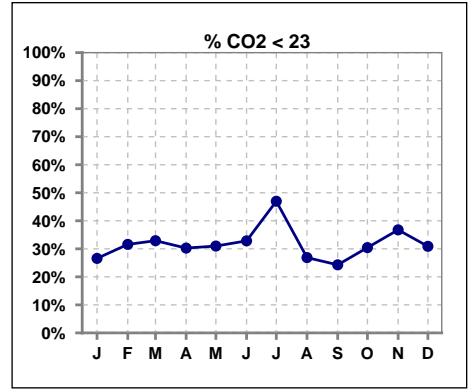
	Jan	Feb	Mar	Apr	May	Jun	Jul	Aug	Sep	Oct	Nov	Dec
# L processed/kg	79	78	76	76	71	67	66	67	69	70	67	67
# L processed/kg>=0.8	63	64	64	64	61	57	56	58	58	58	55	54
Pop. Mean	1	1	1	1	1	1	1	1	1	1	1	1
Std. Deviation	0.3	0.3	0.3	0.3	0.3	0.3	0.3	0.3	0.3	0.3	0.3	0.3
% L processed/kg>=0.8	80%	82%	84%	84%	86%	85%	85%	87%	84%	83%	82%	81%



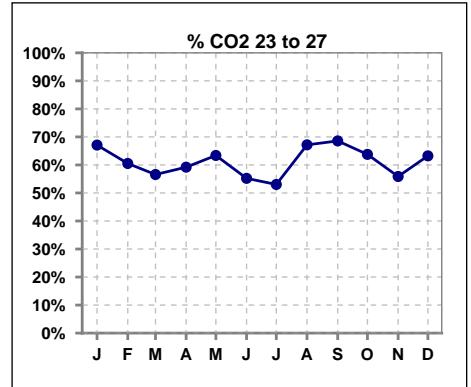
Methodology: a) All labs for 'Adequacy of Dialysis', 'Nutrition', 'Osteodystrophy', 'Anemia' and 'Diabetes' based on last value of month; b) BP's and #L processed are average of all values for month; c) Access data takes last access of month; d) Values for SGA and 'Infection Control' use most recent result.

I. ADEQUACY OF DIALYSIS - CONT.

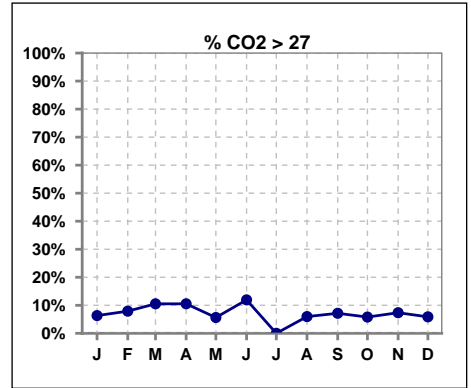
	Jan	Feb	Mar	Apr	May	Jun	Jul	Aug	Sep	Oct	Nov	Dec
# CO2	79	76	76	76	71	67	66	67	70	69	68	68
# CO2 < 23	21	24	25	23	22	22	31	18	17	21	25	21
Pop. Mean	24	24	23	24	24	24	23	24	24	24	23	24
Std. Deviation	2.81	2.68	3.30	3.02	2.60	2.68	2.41	2.46	2.93	2.42	3.02	2.91
% CO2 < 23	27%	32%	33%	30%	31%	33%	47%	27%	24%	30%	37%	31%



	Jan	Feb	Mar	Apr	May	Jun	Jul	Aug	Sep	Oct	Nov	Dec
# CO2	79	76	76	76	71	67	66	67	70	69	68	68
# CO2 23 to 27	53	46	43	45	45	37	35	45	48	44	38	43
Pop. Mean	24	24	23	24	24	24	23	24	24	24	23	24
Std. Deviation	2.81	2.68	3.30	3.02	2.60	2.68	2.41	2.46	2.93	2.42	3.02	2.91
% CO2 23 to 27	67%	61%	57%	59%	63%	55%	53%	67%	69%	64%	56%	63%



	Jan	Feb	Mar	Apr	May	Jun	Jul	Aug	Sep	Oct	Nov	Dec
# CO2	79	76	76	76	71	67	66	67	70	69	68	68
# CO2 > 27	5	6	8	8	4	8	0	4	5	4	5	4
Pop. Mean	24	24	23	24	24	24	23	24	24	24	23	24
Std. Deviation	2.81	2.68	3.30	3.02	2.60	2.68	2.41	2.46	2.93	2.42	3.02	2.91
% CO2 > 27	6%	8%	11%	11%	6%	12%	0%	6%	7%	6%	7%	6%



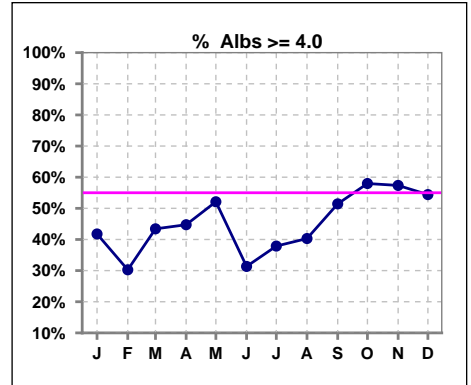
Methodology: a) All labs for 'Adequacy of Dialysis', 'Nutrition', 'Osteodystrophy', 'Anemia' and 'Diabetes' based on last value of month; b) BP's and #L processed are average of all values for month; c) Access data takes last access of month; d) Values for SGA and 'Infection Control' use most recent result.

Broadway Kidney Center - Center Hemodialysis
 Quality Assurance Reports
 Through period ending Dec. 31, 2022

*Albumin values use BCG method - as of July 2001

II. NUTRITION

	Jan	Feb	Mar	Apr	May	Jun	Jul	Aug	Sep	Oct	Nov	Dec
# Albumin	79	76	76	76	71	67	66	67	70	69	68	68
# Albumin >= 4.0	33	23	33	34	37	21	25	27	36	40	39	37
Pop. Mean	3.8	3.7	3.8	3.8	3.9	3.7	3.8	3.9	3.9	3.9	3.9	3.9
Std. Deviation	0.40	0.44	0.39	0.44	0.42	0.38	0.38	0.36	0.38	0.36	0.40	0.35
% Alb >= 4.0	42%	30%	43%	45%	52%	31%	38%	40%	51%	58%	57%	54%

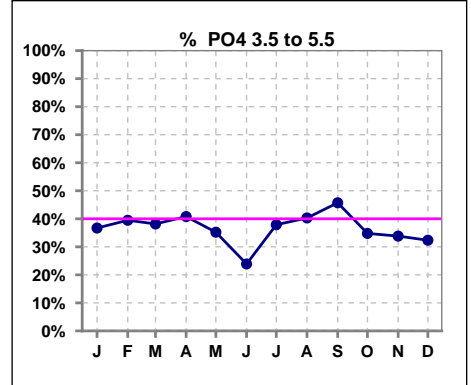


Methodology: a) All labs for 'Adequacy of Dialysis', 'Nutrition', 'Osteodystrophy', 'Anemia' and 'Diabetes' based on last value of month; b) BP's and #L processed are average of all values for month; c) Access data takes last access of month; d) Values for SGA and 'Infection Control' use most recent result.

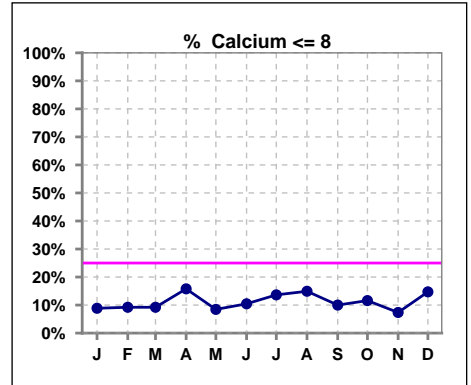
Lab methodology for PTH changed January 2012

III. OSTEODYSTROPHY

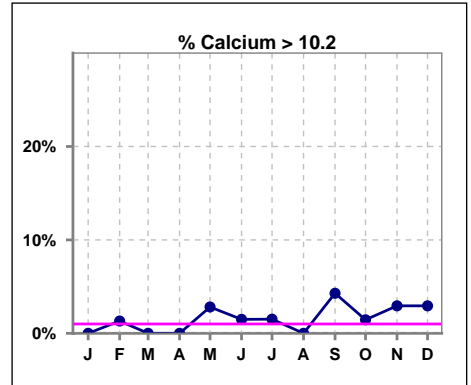
	Jan	Feb	Mar	Apr	May	Jun	Jul	Aug	Sep	Oct	Nov	Dec
# PO4	79	76	76	76	71	67	66	67	70	69	68	68
# PO4 3.5 to 5.5	29	30	29	31	25	16	25	27	32	24	23	22
Pop. Mean	6.2	6.1	6.3	6.3	6.2	6.4	6.2	6.0	6.0	5.9	6.0	6.2
Std. Deviation	2.01	1.81	1.80	1.78	1.69	1.74	1.88	1.84	2.20	2.08	2.30	2.18
% PO4 3.5 to 5.5	37%	39%	38%	41%	35%	24%	38%	40%	46%	35%	34%	32%



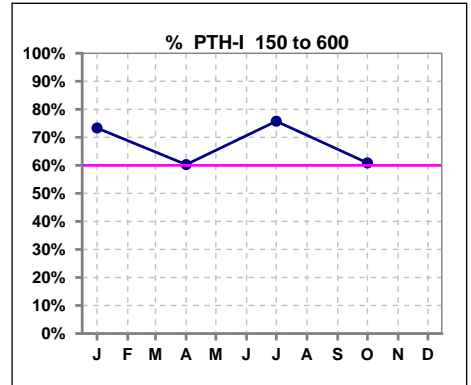
	Jan	Feb	Mar	Apr	May	Jun	Jul	Aug	Sep	Oct	Nov	Dec
# Calcium	79	76	76	76	71	67	66	67	70	69	68	68
# Calcium <= 8	7	7	7	12	6	7	9	10	7	8	5	10
Pop. Mean	9.1	9.1	9.0	9.0	9.1	9.1	9.0	9.0	9.1	8.9	9.1	8.9
Std. Deviation	0.71	0.72	0.72	0.80	0.75	0.75	0.83	0.75	0.81	0.82	0.71	0.93
% Calcium <= 8	9%	9%	9%	16%	8%	10%	14%	15%	10%	12%	7%	15%



	Jan	Feb	Mar	Apr	May	Jun	Jul	Aug	Sep	Oct	Nov	Dec
# Calcium	79	76	76	76	71	67	66	67	70	69	68	68
# Calcium > 10.2	0	1	0	0	2	1	1	0	3	1	2	2
Pop. Mean	9.1	9.1	9.0	9.0	9.1	9.1	9.0	9.0	9.1	8.9	9.1	8.9
Std. Deviation	0.71	0.72	0.72	0.80	0.75	0.75	0.83	0.75	0.81	0.82	0.71	0.93
% Calcium > 10.2	0%	1%	0%	0%	3%	1%	2%	0%	4%	1%	3%	3%



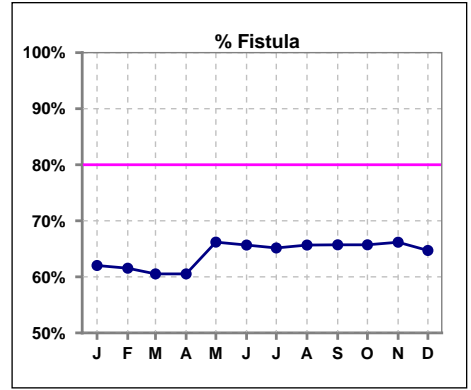
	Jan	Feb	Mar	Apr	May	Jun	Jul	Aug	Sep	Oct	Nov	Dec
# PTH-I	75			73			66			69		
# PTH-I 150 to 600	55			44			50			42		
Pop. Mean	485			622			445			442		
Std. Deviation	535			702			362			281		
% PTH-I 150 to 600	73%			60%			76%			61%		



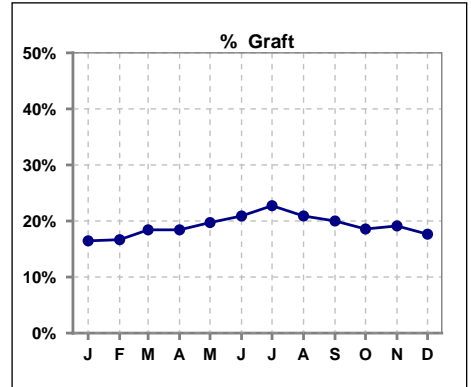
Methodology: a) All labs for 'Adequacy of Dialysis', 'Nutrition', 'Osteodystrophy', 'Anemia' and 'Diabetes' based on last value of month; b) BP's and #L processed are average of all values for month; c) Access data takes last access of month; d) Values for SGA and 'Infection Control' use most recent result.

IV. ACCESS

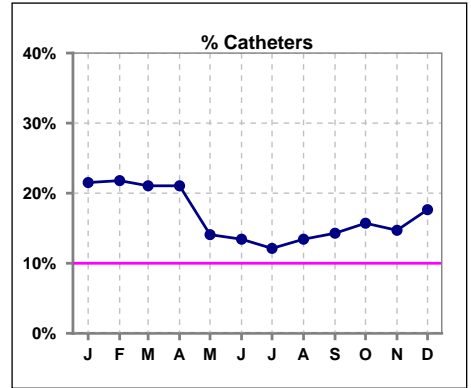
	Jan	Feb	Mar	Apr	May	Jun	Jul	Aug	Sep	Oct	Nov	Dec
# Access	79	78	76	76	71	67	66	67	70	70	68	68
# Fistula	49	48	46	46	47	44	43	44	46	46	45	44
% Fistula	62%	62%	61%	61%	66%	66%	65%	66%	66%	66%	66%	65%



	Jan	Feb	Mar	Apr	May	Jun	Jul	Aug	Sep	Oct	Nov	Dec
# Access	79	78	76	76	71	67	66	67	70	70	68	68
# Graft	13	13	14	14	14	14	15	14	14	13	13	12
% Graft	16%	17%	18%	18%	20%	21%	23%	21%	20%	19%	19%	18%



	Jan	Feb	Mar	Apr	May	Jun	Jul	Aug	Sep	Oct	Nov	Dec
# Access	79	78	76	76	71	67	66	67	70	70	68	68
# Catheters	17	17	16	16	10	9	8	9	10	11	10	12
% Catheters	22%	22%	21%	21%	14%	13%	12%	13%	14%	16%	15%	18%



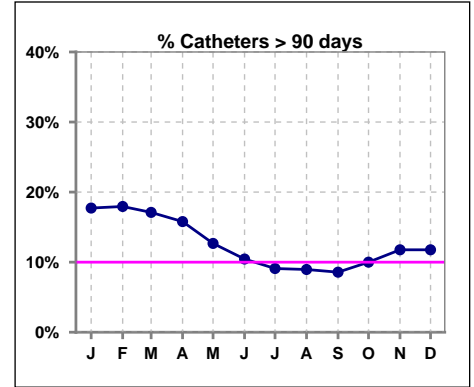
Methodology: a) All labs for 'Adequacy of Dialysis', 'Nutrition', 'Osteodystrophy', 'Anemia' and 'Diabetes' based on last value of month; b) BP's and #L processed are average of all values for month; c) Access data takes last access of month; d) Values for SGA and 'Infection Control' use most recent result.

IV. ACCESS - CONT.

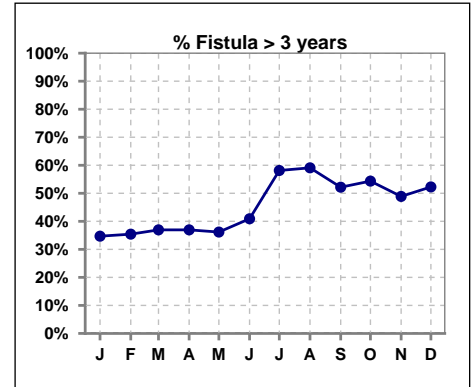
Catheters > 90 days

	Jan	Feb	Mar	Apr	May	Jun	Jul	Aug	Sep	Oct	Nov	Dec
# Access	79	78	76	76	71	67	66	67	70	70	68	68
# Catheters	14	14	13	12	9	7	6	6	6	7	8	8
% Catheters	18%	18%	17%	16%	13%	10%	9%	9%	9%	10%	12%	12%

Definition: Catheter in use on last treatment of the month



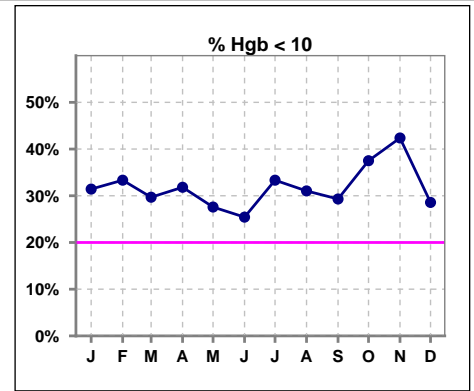
	Jan	Feb	Mar	Apr	May	Jun	Jul	Aug	Sep	Oct	Nov	Dec
# Fistula	49	48	46	46	47	44	43	44	46	46	45	44
# Fistula > 3 yrs	17	17	17	17	17	18	25	26	24	25	22	23
% Fistula > 3 yrs	35%	35%	37%	37%	36%	41%	58%	59%	52%	54%	49%	52%



V. ANEMIA

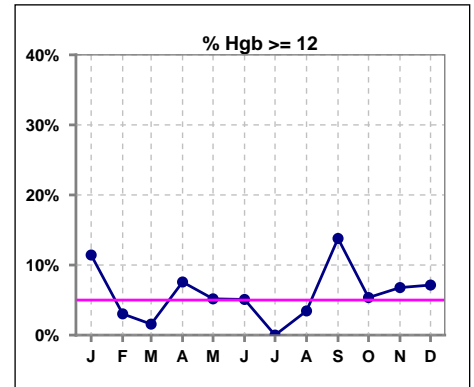
	Jan	Feb	Mar	Apr	May	Jun	Jul	Aug	Sep	Oct	Nov	Dec
# Hgb	70	66	64	66	58	59	54	58	58	56	59	56
# Hgb < 10	22	22	19	21	16	15	18	18	17	21	25	16
Pop. Mean	10.4	10.4	10.3	10.5	10.5	10.4	10.3	10.4	10.6	10.3	10.2	10.3
Std. Deviation	1.3	1.3	1.4	1.4	1.4	1.5	1.3	1.3	1.6	1.2	1.4	1.4
% Hgb < 10	31%	33%	30%	32%	28%	25%	33%	31%	29%	38%	42%	29%

Note: Excludes patients who received no ESA in month.



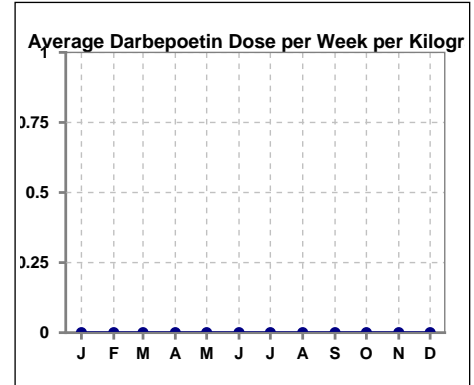
	Jan	Feb	Mar	Apr	May	Jun	Jul	Aug	Sep	Oct	Nov	Dec
# Hgb	70	66	64	66	58	59	54	58	58	56	59	56
# Hgb >= 12	8	2	1	5	3	3	0	2	8	3	4	4
Pop. Mean	10.4	10.4	10.3	10.5	10.5	10.4	10.3	10.4	10.6	10.3	10.2	10.3
Std. Deviation	1.3	1.3	1.4	1.4	1.4	1.5	1.3	1.3	1.6	1.2	1.4	1.4
% Hgb >= 12	11%	3%	2%	8%	5%	5%	0%	3%	14%	5%	7%	7%

Note: Excludes patients who received no ESA in month.



Average Darbepoetin Dose per Week per Kilogram

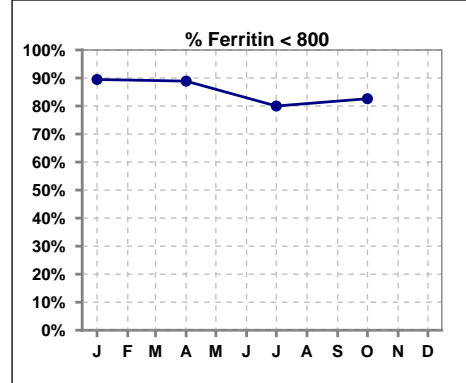
	Jan	Feb	Mar	Apr	May	Jun	Jul	Aug	Sep	Oct	Nov	Dec
# Average Darbepoetin	0	0	0	0	0	0	0	0	0	0	0	0



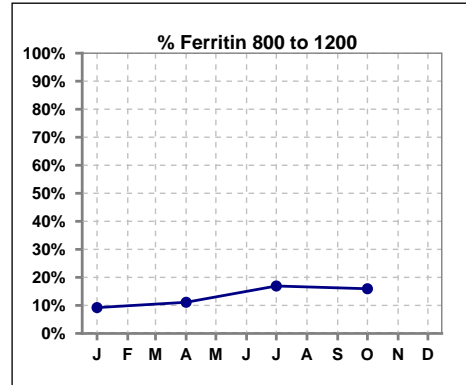
V. ANEMIA - CONT.

Iron Profile

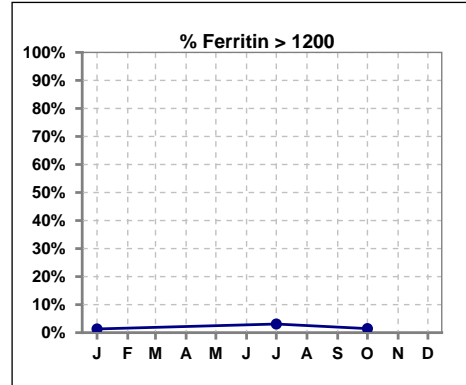
	Jan	Feb	Mar	Apr	May	Jun	Jul	Aug	Sep	Oct	Nov	Dec
# Ferritin	76			72			65			69		
# Ferritin < 800	68			64			52			57		
Pop. Mean	458			468			517			505		
Std. Deviation	253			272			323			325		
% Ferritin < 800	89%			89%			80%			83%		



	Jan	Feb	Mar	Apr	May	Jun	Jul	Aug	Sep	Oct	Nov	Dec
# Ferritin	76			72			65			69		
# Ferritin 800 to 1200	7			8			11			11		
Pop. Mean	458			468			517			505		
Std. Deviation	253			272			323			325		
% Ferritin 800 to 1200	9%			11%			17%			16%		

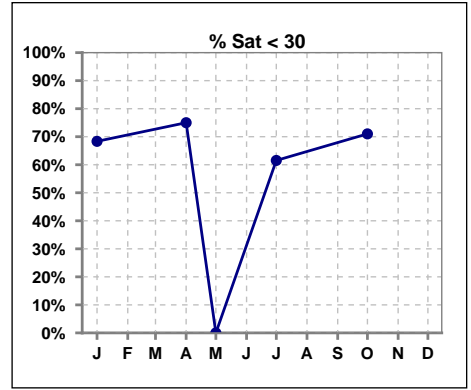


	Jan	Feb	Mar	Apr	May	Jun	Jul	Aug	Sep	Oct	Nov	Dec
# Ferritin	76			72			65			69		
# Ferritin > 1200	1						2			1		
Pop. Mean	458			468			517			505		
Std. Deviation	253			272			323			325		
% Ferritin > 1200	1%						3%			1%		

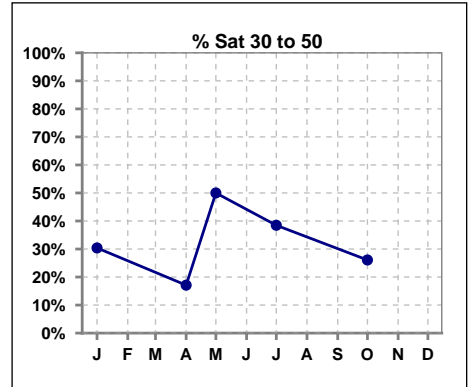


V. ANEMIA - CONT.

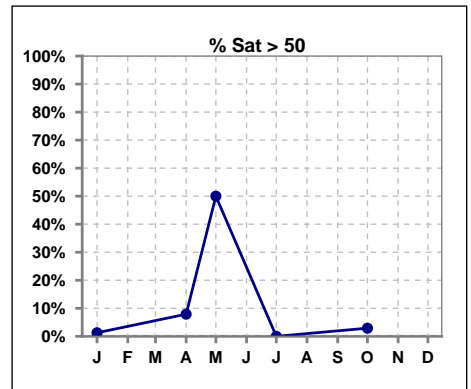
	Jan	Feb	Mar	Apr	May	Jun	Jul	Aug	Sep	Oct	Nov	Dec
# % Sat	79			76	2		65			69		
# % Sat < 30	54			57	0		40			49		
Pop. Mean	26			27	59		26			25		
Std. Deviation	10			16	13		10			11		
% % Sat < 30	68%			75%	0%		62%			71%		



	Jan	Feb	Mar	Apr	May	Jun	Jul	Aug	Sep	Oct	Nov	Dec
# % Sat	79			76	2		65			69		
# % Sat 30 to 50	24			13	1		25			18		
Pop. Mean	26			27	59		26			25		
Std. Deviation	10			16	13		10			11		
% % Sat 30 to 50	30%			17%	50%		38%			26%		



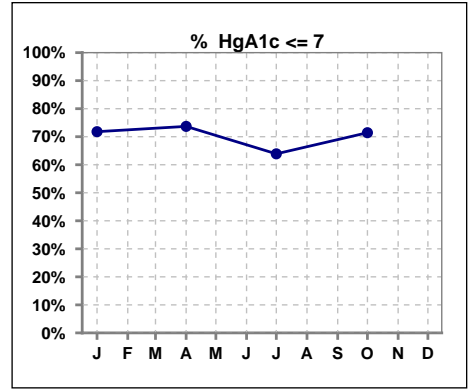
	Jan	Feb	Mar	Apr	May	Jun	Jul	Aug	Sep	Oct	Nov	Dec
# % Sat	79			76	2		65			69		
# % Sat > 50	1			6	1		0			2		
Pop. Mean	26			27	59		26			25		
Std. Deviation	10			16	13		10			11		
% % Sat > 50	1%			8%	50%		0%			3%		



Methodology: a) All labs for 'Adequacy of Dialysis', 'Nutrition', 'Osteodystrophy', 'Anemia' and 'Diabetes' based on last value of month; b) BP's and #L processed are average of all values for month; c) Access data takes last access of month; d) Values for SGA and 'Infection Control' use most recent result.

VI. Diabetes

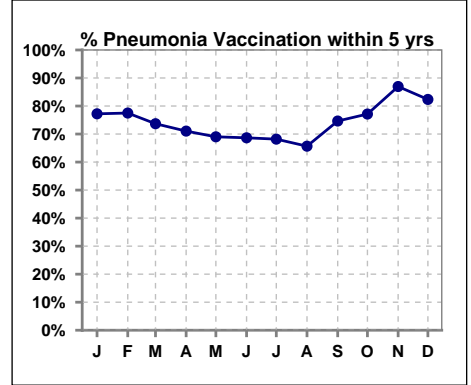
	Jan	Feb	Mar	Apr	May	Jun	Jul	Aug	Sep	Oct	Nov	Dec
# HgA1c	39			38			36			35		
# HgA1c <= 7	28			28			23			25		
Pop. Mean	6.8			6.7			6.7			6.7		
Std. Deviation	1.92			1.59			1.62			2.11		
% HgA1c <= 7	72%			74%			64%			71%		



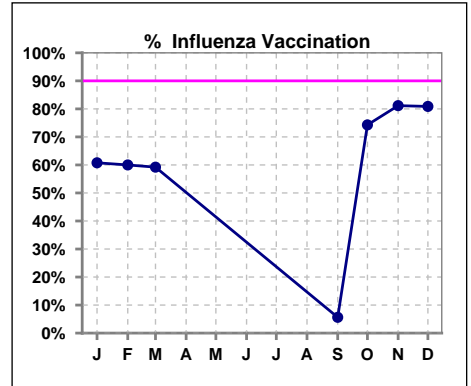
VII. Infection Control

Pneumonia vaccination within the past five years

	Jan	Feb	Mar	Apr	May	Jun	Jul	Aug	Sep	Oct	Nov	Dec
# Patient	79	80	76	76	71	67	66	67	71	70	69	68
# Pneumonia	61	62	56	54	49	46	45	44	53	54	60	56
% Pneumonia	77%	78%	74%	71%	69%	69%	68%	66%	75%	77%	87%	82%



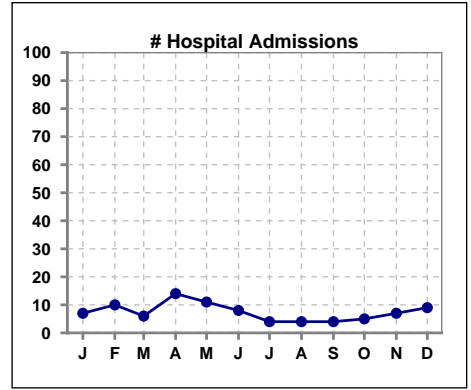
	Jan	Feb	Mar	Apr	May	Jun	Jul	Aug	Sep	Oct	Nov	Dec
# Patient	79	80	76						71	70	69	68
# Influenza	48	48	45						4	52	56	55
% Influenza	61%	60%	59%						6%	74%	81%	81%



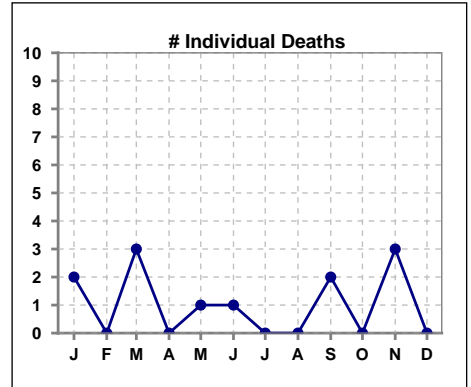
Methodology: a) All labs for 'Adequacy of Dialysis', 'Nutrition', 'Osteodystrophy', 'Anemia' and 'Diabetes' based on last value of month; b) BP's and #L processed are average of all values for month; c) Access data takes last access of month; d) Values for SGA and 'Infection Control' use most recent result.

VIII. Outcome measures

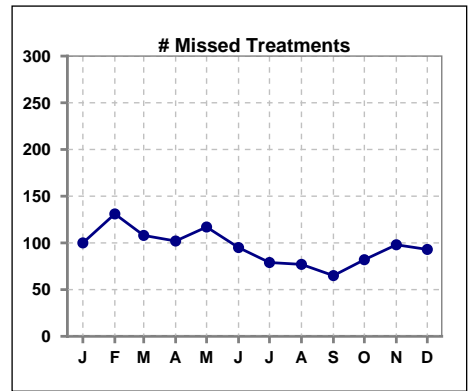
	Jan	Feb	Mar	Apr	May	Jun	Jul	Aug	Sep	Oct	Nov	Dec
# Patient	79	80	76	76	71	67	66	67	71	70	69	68
# Hospital Admissions	7	10	6	14	11	8	4	4	4	5	7	9



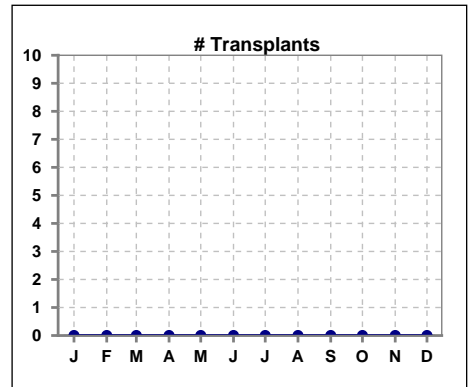
	Jan	Feb	Mar	Apr	May	Jun	Jul	Aug	Sep	Oct	Nov	Dec
# Patient	79	80	76	76	71	67	66	67	71	70	69	68
# Individual Deaths	2	0	3	0	1	1	0	0	2	0	3	0



	Jan	Feb	Mar	Apr	May	Jun	Jul	Aug	Sep	Oct	Nov	Dec
# Patient	79	80	76	76	71	67	66	67	71	70	69	68
# Missed Treatments	100	131	108	102	117	95	79	77	65	82	98	93



	Jan	Feb	Mar	Apr	May	Jun	Jul	Aug	Sep	Oct	Nov	Dec
# Patient	79	80	76	76	71	67	66	67	71	70	69	68
# Transplants	0	0	0	0	0	0	0	0	0	0	0	0



Methodology: a) All labs for 'Adequacy of Dialysis', 'Nutrition', 'Osteodystrophy', 'Anemia' and 'Diabetes' based on last value of month; b) BP's and #L processed are average of all values for month; c) Access data takes last access of month; d) Values for SGA and 'Infection Control' use most recent result.