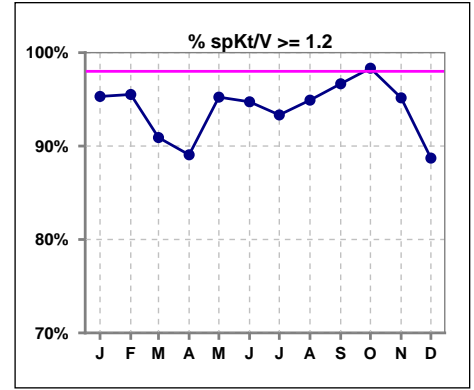
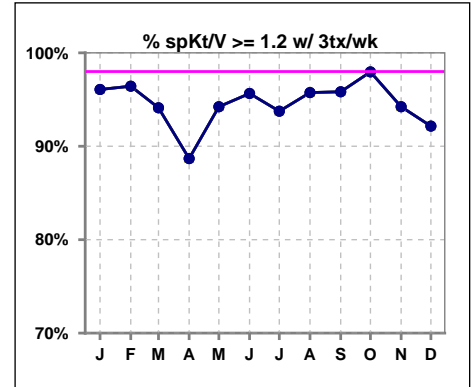


**I. ADEQUACY OF DIALYSIS**

	Jan	Feb	Mar	Apr	May	Jun	Jul	Aug	Sep	Oct	Nov	Dec
# spKt/V	64	67	66	64	63	57	60	59	60	60	62	62
# spKt/V >= 1.2	61	64	60	57	60	54	56	56	58	59	59	55
Pop. Mean	1.58	1.56	1.56	1.55	1.54	1.52	1.52	1.59	1.64	1.64	1.60	1.56
Std. Deviation	0.31	0.31	0.35	0.29	0.30	0.31	0.35	0.39	0.36	0.31	0.35	0.32
% spKt/V >= 1.2	95%	96%	91%	89%	95%	95%	93%	95%	97%	98%	95%	89%



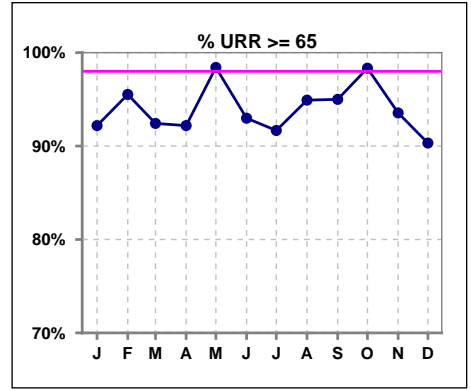
	Jan	Feb	Mar	Apr	May	Jun	Jul	Aug	Sep	Oct	Nov	Dec
# spKt/V w/ 3tx/wk	51	56	51	53	52	46	48	47	48	49	52	51
# spKt/V >= 1.2 w/3tx/wk	49	54	48	47	49	44	45	45	46	48	49	47
Pop. Mean	1.62	1.57	1.62	1.56	1.57	1.54	1.55	1.59	1.67	1.66	1.61	1.58
Std. Deviation	0.31	0.31	0.33	0.30	0.31	0.33	0.36	0.32	0.36	0.32	0.37	0.32
% >= 1.2 w/3tx/wk	96%	96%	94%	89%	94%	96%	94%	96%	96%	98%	94%	92%



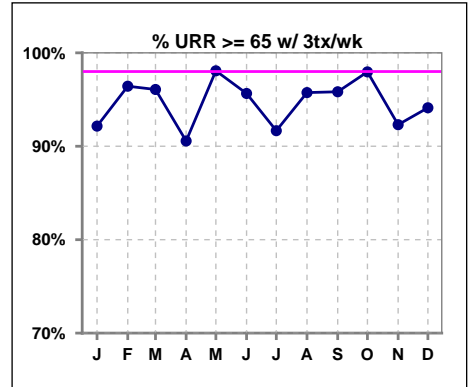
Methodology: a) All labs for 'Adequacy of Dialysis', 'Nutrition', 'Osteodystrophy', 'Anemia' and 'Diabetes' based on last value of month; b) BP's and #L processed are average of all values for month; c) Access data takes last access of month; d) Values for SGA and 'Infection Control' use most recent result.

**I. ADEQUACY OF DIALYSIS - CONT.**

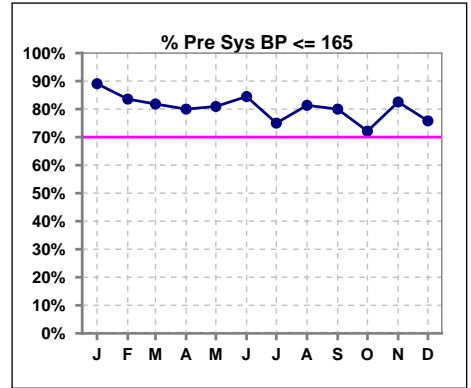
	Jan	Feb	Mar	Apr	May	Jun	Jul	Aug	Sep	Oct	Nov	Dec
# URR	64	67	66	64	63	57	60	59	60	60	62	62
# URR >= 65	59	64	61	59	62	53	55	56	57	59	58	56
Pop. Mean	74	74	73	73	73	73	73	74	75	75	74	74
Std. Deviation	6.60	6.95	7.53	6.32	5.77	6.75	7.43	7.54	7.08	6.19	6.97	6.61
<b>% URR &gt;= 65</b>	<b>92%</b>	<b>96%</b>	<b>92%</b>	<b>92%</b>	<b>98%</b>	<b>93%</b>	<b>92%</b>	<b>95%</b>	<b>95%</b>	<b>98%</b>	<b>94%</b>	<b>90%</b>



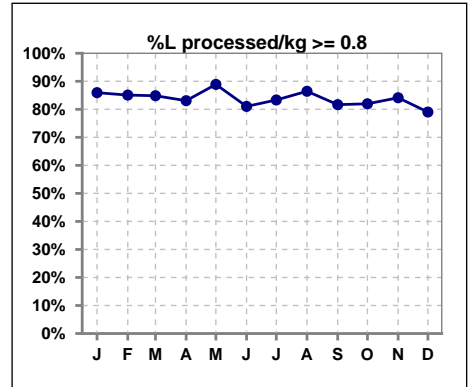
	Jan	Feb	Mar	Apr	May	Jun	Jul	Aug	Sep	Oct	Nov	Dec
# URR w/ 3tx/wk	51	56	51	53	52	46	48	47	48	49	52	51
# URR>=65 w/ 3tx/wk	47	54	49	48	51	44	44	45	46	48	48	48
Pop. Mean	75	74	75	74	74	73	73	74	76	76	74	74
Std. Deviation	6.61	7.06	6.69	6.54	5.89	6.93	7.48	6.60	6.78	6.30	7.16	6.45
<b>% URR&gt;=65 w/ 3tx/wk</b>	<b>92%</b>	<b>96%</b>	<b>96%</b>	<b>91%</b>	<b>98%</b>	<b>96%</b>	<b>92%</b>	<b>96%</b>	<b>96%</b>	<b>98%</b>	<b>92%</b>	<b>94%</b>



	Jan	Feb	Mar	Apr	May	Jun	Jul	Aug	Sep	Oct	Nov	Dec
# Pre Sys BP	64	67	66	65	63	58	60	59	60	61	63	62
# Pre Sys BP <= 165	58	57	55	52	51	50	46	48	48	45	52	47
Pop. Mean	143	145	147	146	147	146	148	148	150	151	149	149
Std. Deviation	17.3	18.4	19.2	18.8	17.7	17.1	17.5	17.6	16.6	18.3	19.1	19.2
<b>%Pre Sys BP &lt;=165</b>	<b>89%</b>	<b>84%</b>	<b>82%</b>	<b>80%</b>	<b>81%</b>	<b>84%</b>	<b>75%</b>	<b>81%</b>	<b>80%</b>	<b>72%</b>	<b>83%</b>	<b>76%</b>



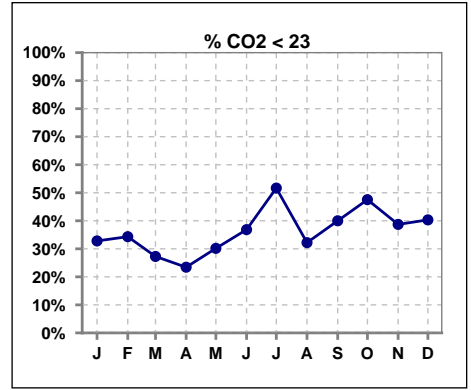
	Jan	Feb	Mar	Apr	May	Jun	Jul	Aug	Sep	Oct	Nov	Dec
# L processed/kg	64	67	66	65	63	58	60	59	60	61	63	62
# L processed/kg>=0.8	55	57	56	54	56	47	50	51	49	50	53	49
Pop. Mean	1	1	1	1	1	1	1	1	1	1	1	1
Std. Deviation	0.3	0.3	0.3	0.3	0.3	0.3	0.3	0.3	0.3	0.3	0.3	0.3
<b>% L processed/kg&gt;=0.8</b>	<b>86%</b>	<b>85%</b>	<b>85%</b>	<b>83%</b>	<b>89%</b>	<b>81%</b>	<b>83%</b>	<b>86%</b>	<b>82%</b>	<b>82%</b>	<b>84%</b>	<b>79%</b>



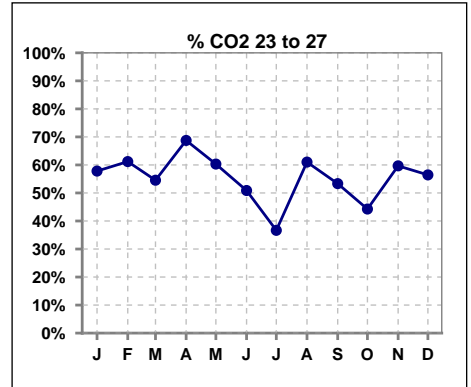
Methodology: a) All labs for 'Adequacy of Dialysis', 'Nutrition', 'Osteodystrophy', 'Anemia' and 'Diabetes' based on last value of month; b) BP's and #L processed are average of all values for month; c) Access data takes last access of month; d) Values for SGA and 'Infection Control' use most recent result.

**I. ADEQUACY OF DIALYSIS - CONT.**

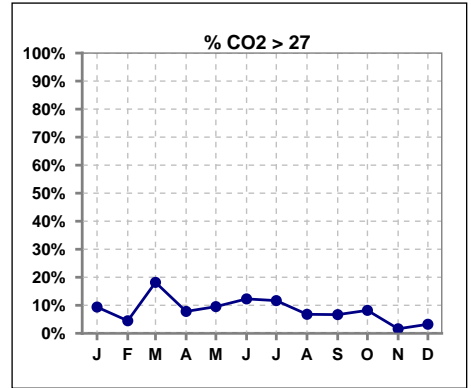
	Jan	Feb	Mar	Apr	May	Jun	Jul	Aug	Sep	Oct	Nov	Dec
# CO2	64	67	66	64	63	57	60	59	60	61	62	62
# CO2 < 23	21	23	18	15	19	21	31	19	24	29	24	25
Pop. Mean	24	23	24	24	24	24	23	24	23	23	23	23
Std. Deviation	2.88	2.85	2.61	2.81	2.92	3.01	2.95	3.08	2.83	3.28	2.64	2.83
<b>% CO2 &lt; 23</b>	<b>33%</b>	<b>34%</b>	<b>27%</b>	<b>23%</b>	<b>30%</b>	<b>37%</b>	<b>52%</b>	<b>32%</b>	<b>40%</b>	<b>48%</b>	<b>39%</b>	<b>40%</b>



	Jan	Feb	Mar	Apr	May	Jun	Jul	Aug	Sep	Oct	Nov	Dec
# CO2	64	67	66	64	63	57	60	59	60	61	62	62
# CO2 23 to 27	37	41	36	44	38	29	22	36	32	27	37	35
Pop. Mean	24	23	24	24	24	24	23	24	23	23	23	23
Std. Deviation	2.88	2.85	2.61	2.81	2.92	3.01	2.95	3.08	2.83	3.28	2.64	2.83
<b>% CO2 23 to 27</b>	<b>58%</b>	<b>61%</b>	<b>55%</b>	<b>69%</b>	<b>60%</b>	<b>51%</b>	<b>37%</b>	<b>61%</b>	<b>53%</b>	<b>44%</b>	<b>60%</b>	<b>56%</b>



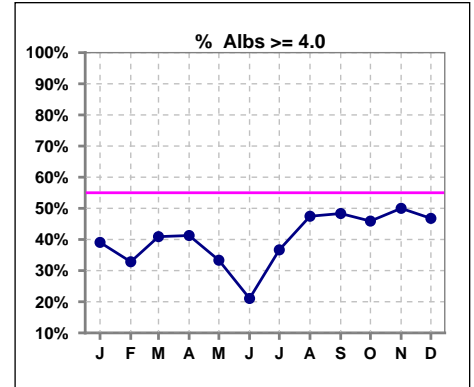
	Jan	Feb	Mar	Apr	May	Jun	Jul	Aug	Sep	Oct	Nov	Dec
# CO2	64	67	66	64	63	57	60	59	60	61	62	62
# CO2 > 27	6	3	12	5	6	7	7	4	4	5	1	2
Pop. Mean	24	23	24	24	24	24	23	24	23	23	23	23
Std. Deviation	2.88	2.85	2.61	2.81	2.92	3.01	2.95	3.08	2.83	3.28	2.64	2.83
<b>% CO2 &gt; 27</b>	<b>9%</b>	<b>4%</b>	<b>18%</b>	<b>8%</b>	<b>10%</b>	<b>12%</b>	<b>12%</b>	<b>7%</b>	<b>7%</b>	<b>8%</b>	<b>2%</b>	<b>3%</b>



\*Albumin values use BCG method - as of July 2001

**II. NUTRITION**

	Jan	Feb	Mar	Apr	May	Jun	Jul	Aug	Sep	Oct	Nov	Dec
# Albumin	64	67	66	63	63	57	60	59	60	61	62	62
# Albumin >= 4.0	25	22	27	26	21	12	22	28	29	28	31	29
Pop. Mean	3.8	3.8	3.8	3.8	3.8	3.7	3.7	3.9	3.9	3.9	3.9	3.9
Std. Deviation	0.40	0.37	0.42	0.40	0.40	0.33	0.46	0.38	0.32	0.34	0.31	0.36
% Alb >= 4.0	39%	33%	41%	41%	33%	21%	37%	47%	48%	46%	50%	47%

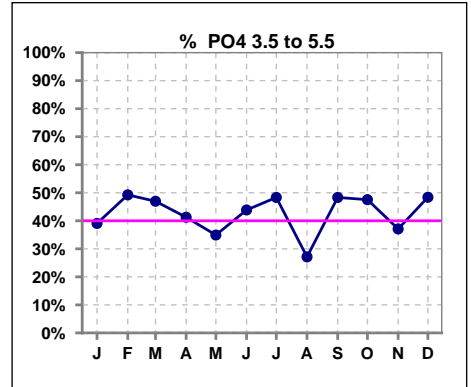


Methodology: a) All labs for 'Adequacy of Dialysis', 'Nutrition', 'Osteodystrophy', 'Anemia' and 'Diabetes' based on last value of month; b) BP's and #L processed are average of all values for month; c) Access data takes last access of month; d) Values for SGA and 'Infection Control' use most recent result.

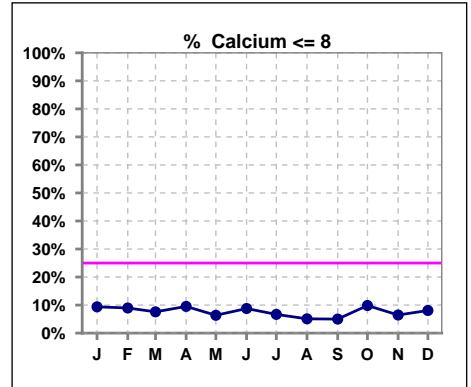
Lab methodology for PTH changed January 2012

**III. OSTEODYSTROPHY**

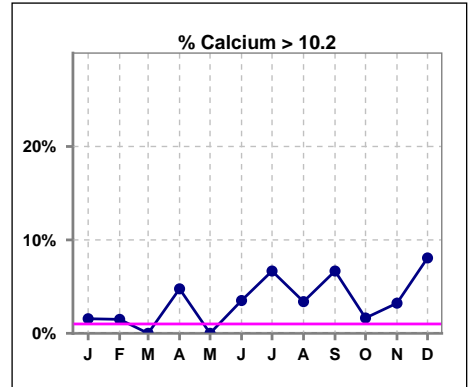
	Jan	Feb	Mar	Apr	May	Jun	Jul	Aug	Sep	Oct	Nov	Dec
# PO4	64	67	66	63	63	57	60	59	60	61	62	62
# PO4 3.5 to 5.5	25	33	31	26	22	25	29	16	29	29	23	30
Pop. Mean	5.8	5.9	5.7	6.0	6.2	5.9	5.9	6.3	6.0	6.1	6.1	5.8
Std. Deviation	1.63	1.76	1.82	1.70	1.69	1.82	1.87	1.80	1.66	1.78	1.54	1.55
% PO4 3.5 to 5.5	39%	49%	47%	41%	35%	44%	48%	27%	48%	48%	37%	48%



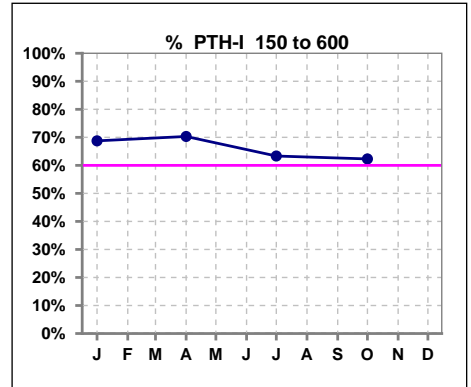
	Jan	Feb	Mar	Apr	May	Jun	Jul	Aug	Sep	Oct	Nov	Dec
# Calcium	64	67	66	63	63	57	60	59	60	61	62	62
# Calcium <= 8	6	6	5	6	4	5	4	3	3	6	4	5
Pop. Mean	9.1	9.2	9.0	9.2	9.0	9.1	9.2	9.2	9.2	9.0	9.2	9.2
Std. Deviation	0.72	0.77	0.67	0.76	0.62	0.69	0.71	0.66	0.82	0.73	0.75	0.71
% Calcium <= 8	9%	9%	8%	10%	6%	9%	7%	5%	5%	10%	6%	8%



	Jan	Feb	Mar	Apr	May	Jun	Jul	Aug	Sep	Oct	Nov	Dec
# Calcium	64	67	66	63	63	57	60	59	60	61	62	62
# Calcium > 10.2	1	1	0	3	0	2	4	2	4	1	2	5
Pop. Mean	9.1	9.2	9.0	9.2	9.0	9.1	9.2	9.2	9.2	9.0	9.2	9.2
Std. Deviation	0.72	0.77	0.67	0.76	0.62	0.69	0.71	0.66	0.82	0.73	0.75	0.71
% Calcium > 10.2	2%	1%	0%	5%	0%	4%	7%	3%	7%	2%	3%	8%



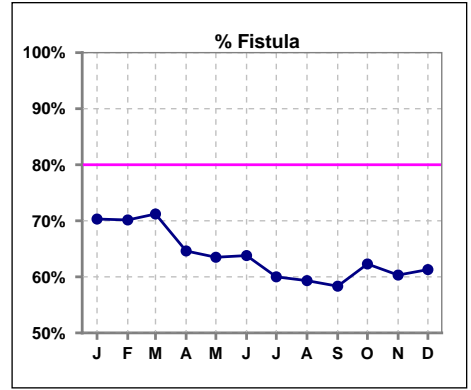
	Jan	Feb	Mar	Apr	May	Jun	Jul	Aug	Sep	Oct	Nov	Dec
# PTH-I	64			64			60			61		
# PTH-I 150 to 600	44			45			38			38		
Pop. Mean	476			478			471			500		
Std. Deviation	355			391			424			392		
% PTH-I 150 to 600	69%			70%			63%			62%		



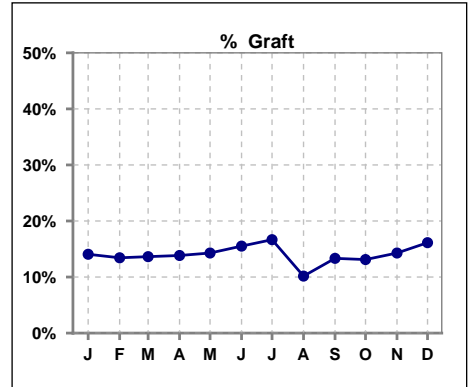
Methodology: a) All labs for 'Adequacy of Dialysis', 'Nutrition', 'Osteodystrophy', 'Anemia' and 'Diabetes' based on last value of month; b) BP's and #L processed are average of all values for month; c) Access data takes last access of month; d) Values for SGA and 'Infection Control' use most recent result.

**IV. ACCESS**

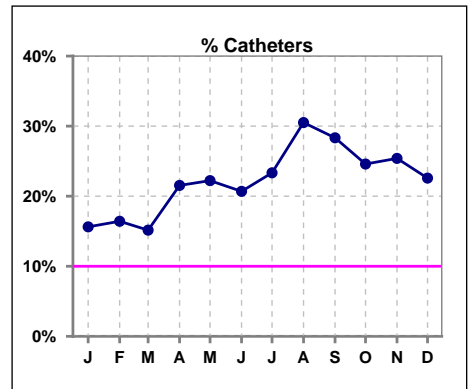
	Jan	Feb	Mar	Apr	May	Jun	Jul	Aug	Sep	Oct	Nov	Dec
# Access	64	67	66	65	63	58	60	59	60	61	63	62
# Fistula	45	47	47	42	40	37	36	35	35	38	38	38
% Fistula	70%	70%	71%	65%	63%	64%	60%	59%	58%	62%	60%	61%



	Jan	Feb	Mar	Apr	May	Jun	Jul	Aug	Sep	Oct	Nov	Dec
# Access	64	67	66	65	63	58	60	59	60	61	63	62
# Graft	9	9	9	9	9	9	10	6	8	8	9	10
% Graft	14%	13%	14%	14%	14%	16%	17%	10%	13%	13%	14%	16%



	Jan	Feb	Mar	Apr	May	Jun	Jul	Aug	Sep	Oct	Nov	Dec
# Access	64	67	66	65	63	58	60	59	60	61	63	62
# Catheters	10	11	10	14	14	12	14	18	17	15	16	14
% Catheters	16%	16%	15%	22%	22%	21%	23%	31%	28%	25%	25%	23%



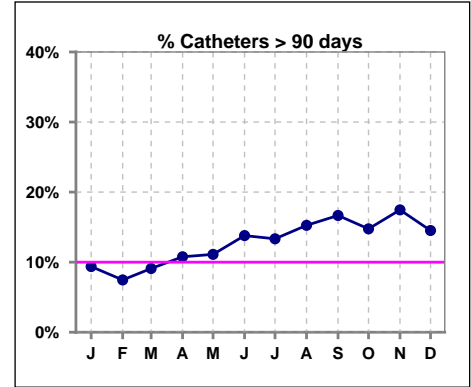
Methodology: a) All labs for 'Adequacy of Dialysis', 'Nutrition', 'Osteodystrophy', 'Anemia' and 'Diabetes' based on last value of month; b) BP's and #L processed are average of all values for month; c) Access data takes last access of month; d) Values for SGA and 'Infection Control' use most recent result.

**IV. ACCESS - CONT.**

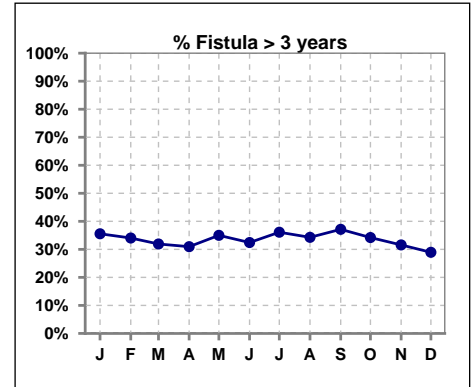
**Catheters > 90 days**

	Jan	Feb	Mar	Apr	May	Jun	Jul	Aug	Sep	Oct	Nov	Dec
<b># Access</b>	64	67	66	65	63	58	60	59	60	61	63	62
<b># Catheters</b>	6	5	6	7	7	8	8	9	10	9	11	9
<b>% Catheters</b>	9%	7%	9%	11%	11%	14%	13%	15%	17%	15%	17%	15%

**Definition:** Catheter in use on last treatment of the month



	Jan	Feb	Mar	Apr	May	Jun	Jul	Aug	Sep	Oct	Nov	Dec
<b># Fistula</b>	45	47	47	42	40	37	36	35	35	38	38	38
<b># Fistula &gt; 3 yrs</b>	16	16	15	13	14	12	13	12	13	13	12	11
<b>% Fistula &gt; 3 yrs</b>	36%	34%	32%	31%	35%	32%	36%	34%	37%	34%	32%	29%

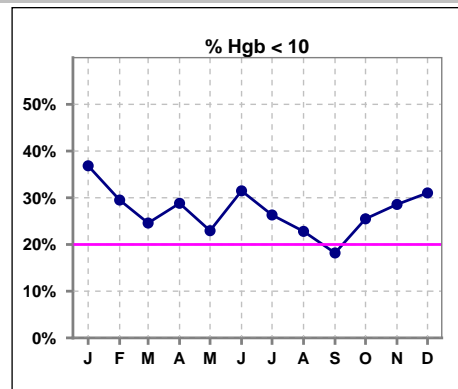


**Methodology:** a) All labs for 'Adequacy of Dialysis', 'Nutrition', 'Osteodystrophy', 'Anemia' and 'Diabetes' based on last value of month; b) BP's and #L processed are average of all values for month; c) Access data takes last access of month; d) Values for SGA and 'Infection Control' use most recent result.

**V. ANEMIA**

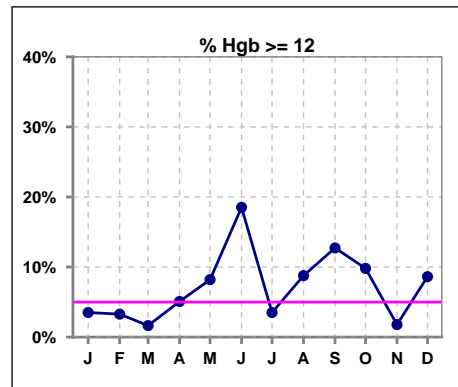
	Jan	Feb	Mar	Apr	May	Jun	Jul	Aug	Sep	Oct	Nov	Dec
# Hgb	57	61	61	59	61	54	57	57	55	51	56	58
# Hgb < 10	21	18	15	17	14	17	15	13	10	13	16	18
Pop. Mean	10.4	10.5	10.4	10.5	10.7	10.7	10.4	10.7	10.8	10.5	10.5	10.5
Std. Deviation	1.2	1.1	1.2	1.1	1.2	1.4	1.2	1.4	1.3	1.3	1.1	1.3
% Hgb < 10	37%	30%	25%	29%	23%	31%	26%	23%	18%	25%	29%	31%

Note: Excludes patients who received no ESA in month.



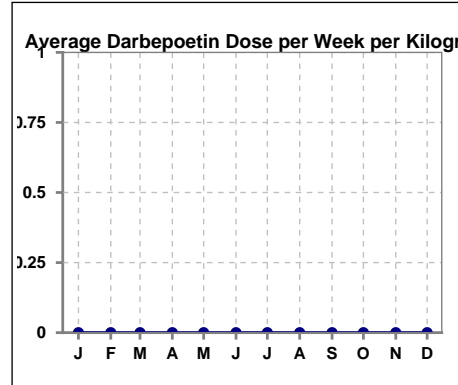
	Jan	Feb	Mar	Apr	May	Jun	Jul	Aug	Sep	Oct	Nov	Dec
# Hgb	57	61	61	59	61	54	57	57	55	51	56	58
# Hgb >= 12	2	2	1	3	5	10	2	5	7	5	1	5
Pop. Mean	10.4	10.5	10.4	10.5	10.7	10.7	10.4	10.7	10.8	10.5	10.5	10.5
Std. Deviation	1.2	1.1	1.2	1.1	1.2	1.4	1.2	1.4	1.3	1.3	1.1	1.3
% Hgb >= 12	4%	3%	2%	5%	8%	19%	4%	9%	13%	10%	2%	9%

Note: Excludes patients who received no ESA in month.



**Average Darbepoetin Dose per Week per Kilogram**

	Jan	Feb	Mar	Apr	May	Jun	Jul	Aug	Sep	Oct	Nov	Dec
# Average Darbepoetin	0	0	0	0	0	0	0	0	0	0	0	0

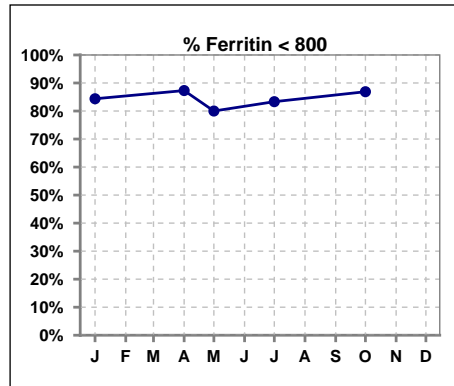




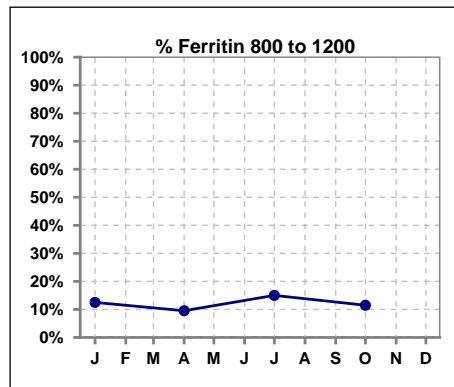
**V. ANEMIA - CONT.**

**Iron Profile**

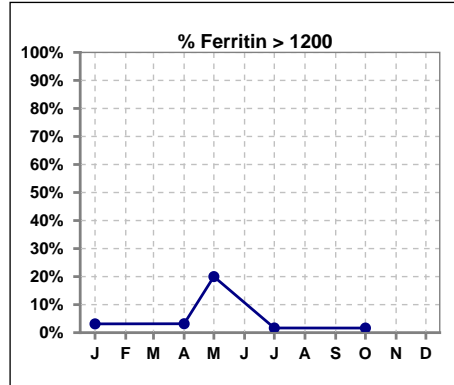
	Jan	Feb	Mar	Apr	May	Jun	Jul	Aug	Sep	Oct	Nov	Dec
# Ferritin	64			63	5		60			61		
# Ferritin < 800	54			55	4		50			53		
Pop. Mean	456			423	497		453			482		
Std. Deviation	303			292	618		317			322		
<b>% Ferritin &lt; 800</b>	<b>84%</b>			<b>87%</b>	<b>80%</b>		<b>83%</b>			<b>87%</b>		



	Jan	Feb	Mar	Apr	May	Jun	Jul	Aug	Sep	Oct	Nov	Dec
# Ferritin	64			63	5		60			61		
# Ferritin 800 to 1200	8			6			9			7		
Pop. Mean	456			423	497		453			482		
Std. Deviation	303			292	618		317			322		
<b>% Ferritin 800 to 1200</b>	<b>13%</b>			<b>10%</b>			<b>15%</b>			<b>11%</b>		



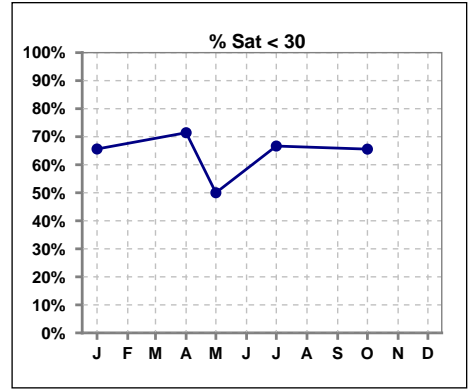
	Jan	Feb	Mar	Apr	May	Jun	Jul	Aug	Sep	Oct	Nov	Dec
# Ferritin	64			63	5		60			61		
# Ferritin > 1200	2			2	1		1			1		
Pop. Mean	456			423	497		453			482		
Std. Deviation	303			292	618		317			322		
<b>% Ferritin &gt; 1200</b>	<b>3%</b>			<b>3%</b>	<b>20%</b>		<b>2%</b>			<b>2%</b>		



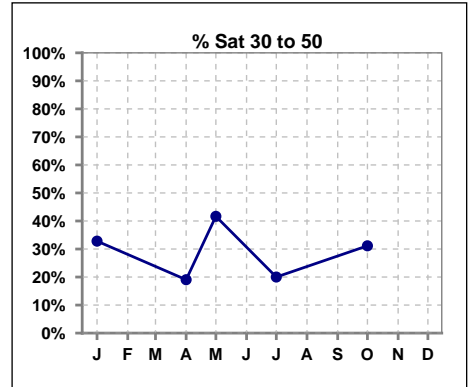
Methodology: a) All labs for 'Adequacy of Dialysis', 'Nutrition', 'Osteodystrophy', 'Anemia' and 'Diabetes' based on last value of month; b) BP's and #L processed are average of all values for month; c) Access data takes last access of month; d) Values for SGA and 'Infection Control' use most recent result.

**V. ANEMIA - CONT.**

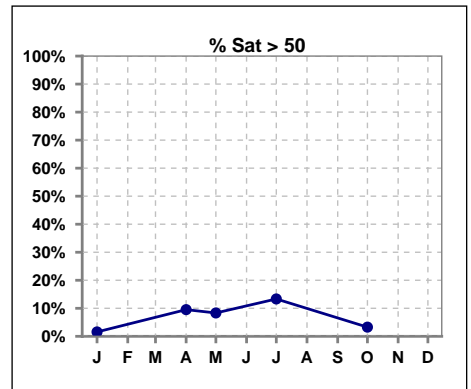
	Jan	Feb	Mar	Apr	May	Jun	Jul	Aug	Sep	Oct	Nov	Dec
# % Sat	64			63	12		60			61		
# % Sat < 30	42			45	6		40			40		
Pop. Mean	26			28	32		30			27		
Std. Deviation	10			16	18		16			14		
<b>% % Sat &lt; 30</b>	<b>66%</b>			<b>71%</b>	<b>50%</b>		<b>67%</b>			<b>66%</b>		



	Jan	Feb	Mar	Apr	May	Jun	Jul	Aug	Sep	Oct	Nov	Dec
# % Sat	64			63	12		60			61		
# % Sat 30 to 50	21			12	5		12			19		
Pop. Mean	26			28	32		30			27		
Std. Deviation	10			16	18		16			14		
<b>% % Sat 30 to 50</b>	<b>33%</b>			<b>19%</b>	<b>42%</b>		<b>20%</b>			<b>31%</b>		

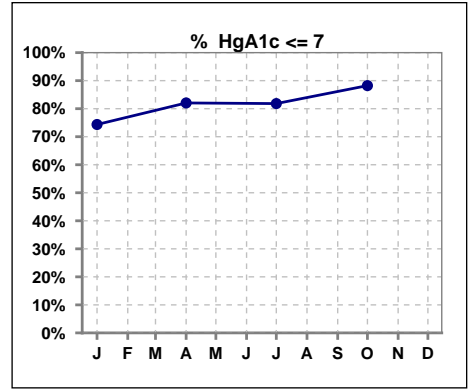


	Jan	Feb	Mar	Apr	May	Jun	Jul	Aug	Sep	Oct	Nov	Dec
# % Sat	64			63	12		60			61		
# % Sat > 50	1			6	1		8			2		
Pop. Mean	26			28	32		30			27		
Std. Deviation	10			16	18		16			14		
<b>% % Sat &gt; 50</b>	<b>2%</b>			<b>10%</b>	<b>8%</b>		<b>13%</b>			<b>3%</b>		



**VI. Diabetes**

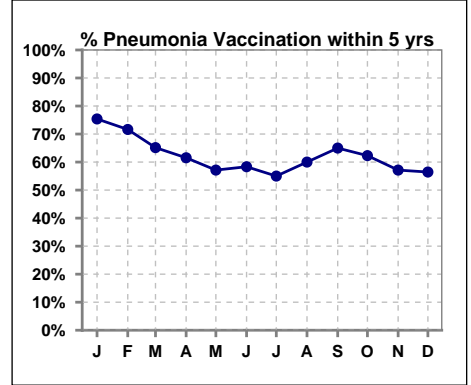
	Jan	Feb	Mar	Apr	May	Jun	Jul	Aug	Sep	Oct	Nov	Dec
# HgA1c	39			39			33			34		
# HgA1c <= 7	29			32			27			30		
Pop. Mean	6.3			6.2			6.3			6.1		
Std. Deviation	1.18			1.26			1.16			1.35		
<b>% HgA1c &lt;= 7</b>	<b>74%</b>			<b>82%</b>			<b>82%</b>			<b>88%</b>		



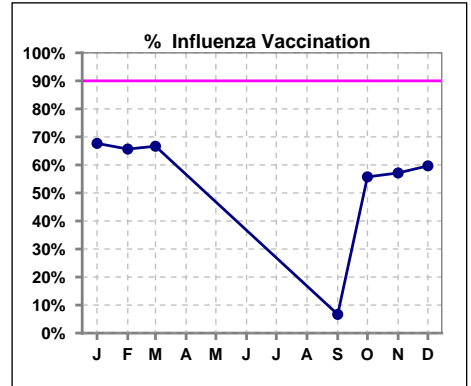
**VII. Infection Control**

**Pneumonia vaccination within the past five years**

	Jan	Feb	Mar	Apr	May	Jun	Jul	Aug	Sep	Oct	Nov	Dec
# Patient	65	67	66	65	63	60	60	60	60	61	63	62
# Pneumonia	49	48	43	40	36	35	33	36	39	38	36	35
% Pneumonia	75%	72%	65%	62%	57%	58%	55%	60%	65%	62%	57%	56%



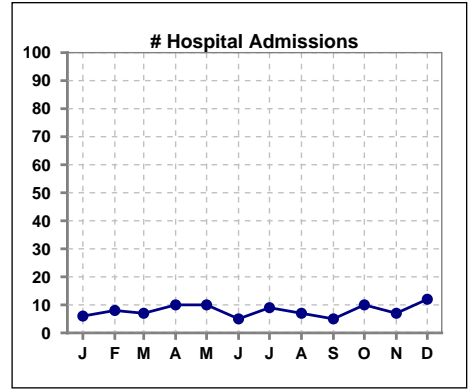
	Jan	Feb	Mar	Apr	May	Jun	Jul	Aug	Sep	Oct	Nov	Dec
# Patient	65	67	66						60	61	63	62
# Influenza	44	44	44						4	34	36	37
% Influenza	68%	66%	67%						7%	56%	57%	60%



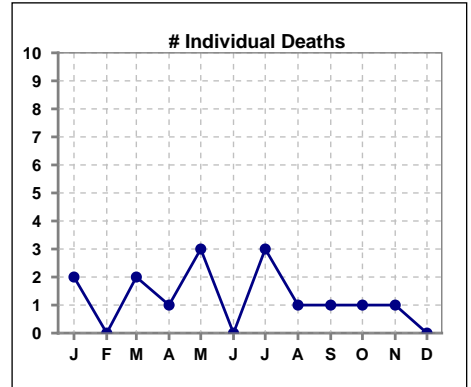
Methodology: a) All labs for 'Adequacy of Dialysis', 'Nutrition', 'Osteodystrophy', 'Anemia' and 'Diabetes' based on last value of month; b) BP's and #L processed are average of all values for month; c) Access data takes last access of month; d) Values for SGA and 'Infection Control' use most recent result.

**VIII. Outcome measures**

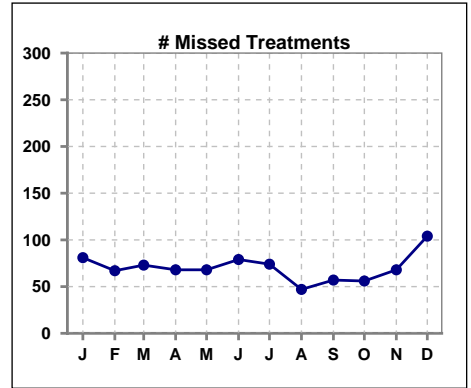
	Jan	Feb	Mar	Apr	May	Jun	Jul	Aug	Sep	Oct	Nov	Dec
<b># Patient</b>	65	67	66	65	63	60	60	60	60	61	63	62
<b># Hospital Admissions</b>	6	8	7	10	10	5	9	7	5	10	7	12



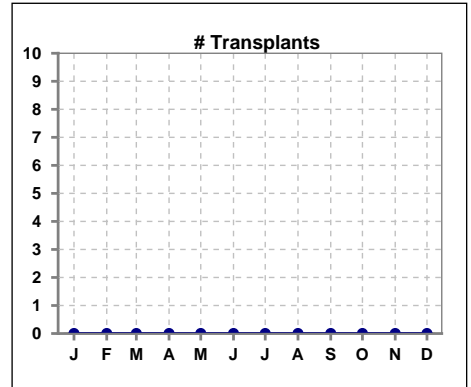
	Jan	Feb	Mar	Apr	May	Jun	Jul	Aug	Sep	Oct	Nov	Dec
<b># Patient</b>	65	67	66	65	63	60	60	60	60	61	63	62
<b># Individual Deaths</b>	2	0	2	1	3	0	3	1	1	1	1	0



	Jan	Feb	Mar	Apr	May	Jun	Jul	Aug	Sep	Oct	Nov	Dec
<b># Patient</b>	65	67	66	65	63	60	60	60	60	61	63	62
<b># Missed Treatments</b>	81	67	73	68	68	79	74	47	57	56	68	104



	Jan	Feb	Mar	Apr	May	Jun	Jul	Aug	Sep	Oct	Nov	Dec
<b># Patient</b>	65	67	66	65	63	60	60	60	60	61	63	62
<b># Transplants</b>	0	0	0	0	0	0	0	0	0	0	0	0



Methodology: a) All labs for 'Adequacy of Dialysis', 'Nutrition', 'Osteodystrophy', 'Anemia' and 'Diabetes' based on last value of month; b) BP's and #L processed are average of all values for month; c) Access data takes last access of month; d) Values for SGA and 'Infection Control' use most recent result.