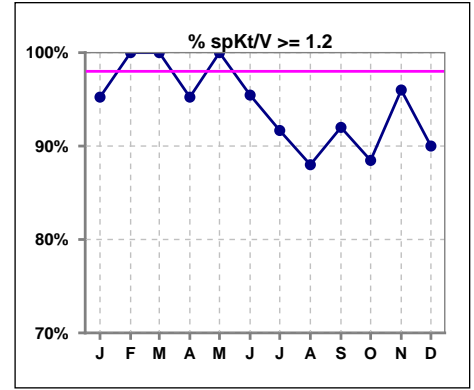
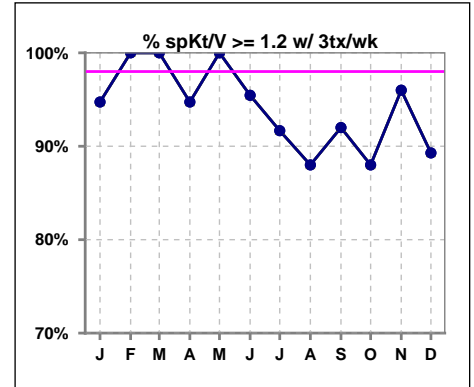


**I. ADEQUACY OF DIALYSIS**

	Jan	Feb	Mar	Apr	May	Jun	Jul	Aug	Sep	Oct	Nov	Dec
# spKt/V	21	21	20	21	21	22	24	25	25	26	25	30
# spKt/V >= 1.2	20	21	20	20	21	21	22	22	23	23	24	27
Pop. Mean	1.64	1.62	1.57	1.54	1.51	1.58	1.49	1.49	1.54	1.56	1.61	1.55
Std. Deviation	0.29	0.32	0.30	0.32	0.23	0.37	0.34	0.32	0.31	0.36	0.37	0.36
% spKt/V >= 1.2	95%	100%	100%	95%	100%	95%	92%	88%	92%	88%	96%	90%

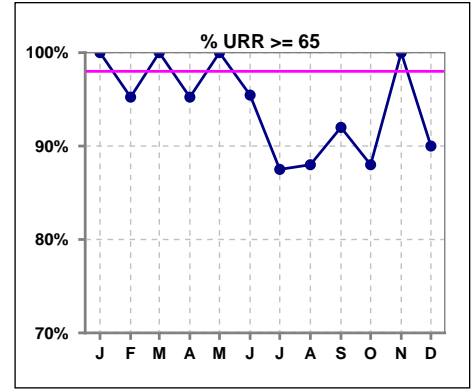


	Jan	Feb	Mar	Apr	May	Jun	Jul	Aug	Sep	Oct	Nov	Dec
# spKt/V w/ 3tx/wk	19	19	18	19	19	22	24	25	25	25	25	28
# spKt/V >= 1.2 w/3tx/wk	18	19	18	18	19	21	22	22	23	22	24	25
Pop. Mean	1.64	1.63	1.59	1.55	1.53	1.58	1.49	1.49	1.54	1.57	1.61	1.55
Std. Deviation	0.31	0.33	0.31	0.33	0.23	0.37	0.34	0.32	0.31	0.36	0.37	0.38
% >= 1.2 w/3tx/wk	95%	100%	100%	95%	100%	95%	92%	88%	92%	88%	96%	89%

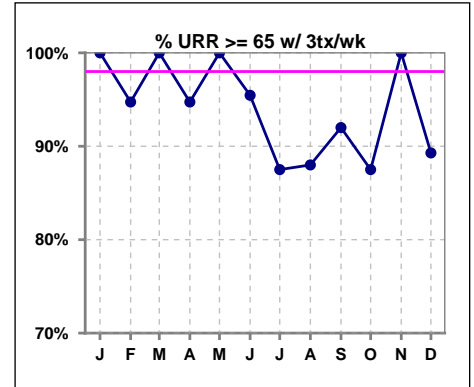


**I. ADEQUACY OF DIALYSIS - CONT.**

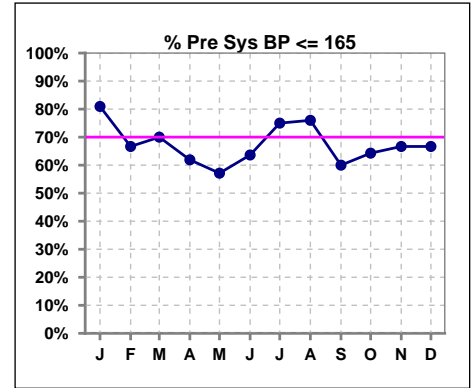
	Jan	Feb	Mar	Apr	May	Jun	Jul	Aug	Sep	Oct	Nov	Dec
# URR	20	21	20	21	21	22	24	25	25	25	25	30
# URR >= 65	20	20	20	20	21	21	21	22	23	22	25	27
Pop. Mean	75	74	73	72	72	73	71	71	72	73	74	72
Std. Deviation	5.15	6.11	5.83	7.65	4.69	6.80	7.44	7.78	6.60	7.54	6.94	7.74
% URR >= 65	100%	95%	100%	95%	100%	95%	88%	88%	92%	88%	100%	90%



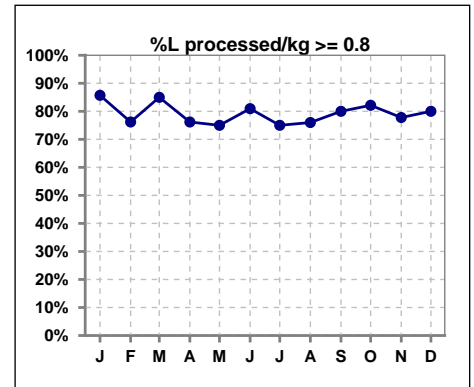
	Jan	Feb	Mar	Apr	May	Jun	Jul	Aug	Sep	Oct	Nov	Dec
# URR w/ 3tx/wk	18	19	18	19	19	22	24	25	25	24	25	28
# URR>=65 w/ 3tx/wk	18	18	18	18	19	21	21	22	23	21	25	25
Pop. Mean	75	74	74	73	73	73	71	71	72	73	74	73
Std. Deviation	5.37	6.33	5.90	7.99	4.76	6.80	7.44	7.78	6.60	7.63	6.94	7.99
% URR>=65 w/ 3tx/wk	100%	95%	100%	95%	100%	95%	88%	88%	92%	88%	100%	89%



	Jan	Feb	Mar	Apr	May	Jun	Jul	Aug	Sep	Oct	Nov	Dec
# Pre Sys BP	21	21	20	21	21	22	24	25	25	28	27	30
# Pre Sys BP <= 165	18	14	15	13	14	14	20	19	16	18	19	20
Pop. Mean	153	155	158	157	156	155	155	151	158	156	155	155
Std. Deviation	16.8	14.1	14.4	18.6	18.5	19.1	18.5	20.7	21.9	19.8	17.9	16.2
% Pre Sys BP <=165	81%	67%	70%	62%	57%	64%	75%	76%	60%	64%	67%	67%



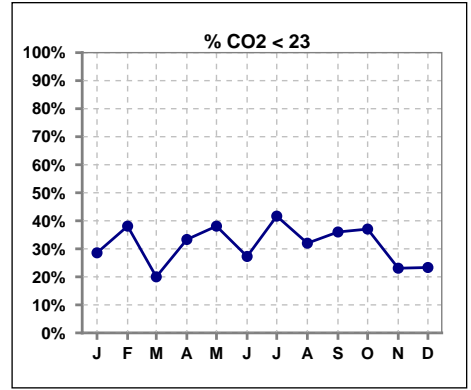
	Jan	Feb	Mar	Apr	May	Jun	Jul	Aug	Sep	Oct	Nov	Dec
# L processed/kg	21	21	20	21	20	21	24	25	25	28	27	30
# L processed/kg>=0.8	18	16	17	16	15	17	18	19	20	23	21	24
Pop. Mean	1	1	1	1	1	1	1	1	1	1	1	1
Std. Deviation	0.3	0.3	0.3	0.2	0.2	0.2	0.3	0.3	0.3	0.3	0.3	0.3
% L processed/kg>=0.8	86%	76%	85%	76%	75%	81%	75%	76%	80%	82%	78%	80%



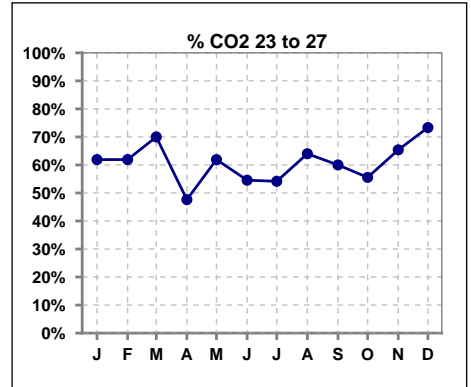
Methodology: a) All labs for 'Adequacy of Dialysis', 'Nutrition', 'Osteodystrophy', 'Anemia' and 'Diabetes' based on last value of month; b) BP's and #L processed are average of all values for month; c) Access data takes last access of month; d) Values for SGA and 'Infection Control' use most recent result.

**I. ADEQUACY OF DIALYSIS - CONT.**

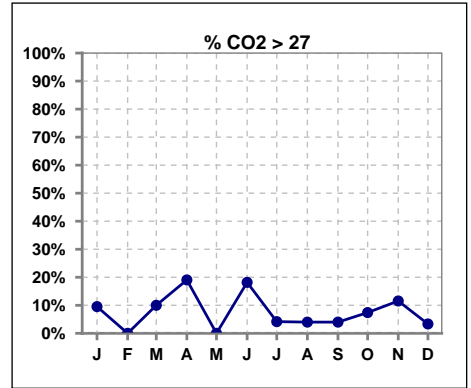
	Jan	Feb	Mar	Apr	May	Jun	Jul	Aug	Sep	Oct	Nov	Dec
# CO2	21	21	20	21	21	22	24	25	25	27	26	30
# CO2 < 23	6	8	4	7	8	6	10	8	9	10	6	7
Pop. Mean	23	23	25	25	23	24	23	23	23	23	24	24
Std. Deviation	3.88	2.71	2.76	3.09	2.23	3.13	2.24	2.40	3.10	2.70	2.27	2.30
% CO2 < 23	29%	38%	20%	33%	38%	27%	42%	32%	36%	37%	23%	23%



	Jan	Feb	Mar	Apr	May	Jun	Jul	Aug	Sep	Oct	Nov	Dec
# CO2	21	21	20	21	21	22	24	25	25	27	26	30
# CO2 23 to 27	13	13	14	10	13	12	13	16	15	15	17	22
Pop. Mean	23	23	25	25	23	24	23	23	23	23	24	24
Std. Deviation	3.88	2.71	2.76	3.09	2.23	3.13	2.24	2.40	3.10	2.70	2.27	2.30
% CO2 23 to 27	62%	62%	70%	48%	62%	55%	54%	64%	60%	56%	65%	73%



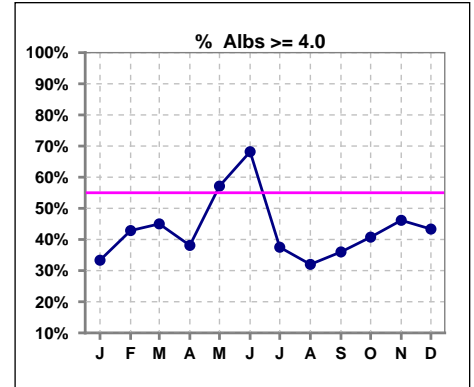
	Jan	Feb	Mar	Apr	May	Jun	Jul	Aug	Sep	Oct	Nov	Dec
# CO2	21	21	20	21	21	22	24	25	25	27	26	30
# CO2 > 27	2	0	2	4	0	4	1	1	1	2	3	1
Pop. Mean	23	23	25	25	23	24	23	23	23	23	24	24
Std. Deviation	3.88	2.71	2.76	3.09	2.23	3.13	2.24	2.40	3.10	2.70	2.27	2.30
% CO2 > 27	10%	0%	10%	19%	0%	18%	4%	4%	4%	7%	12%	3%



\*Albumin values use BCG method - as of July 2001

**II. NUTRITION**

	Jan	Feb	Mar	Apr	May	Jun	Jul	Aug	Sep	Oct	Nov	Dec
# Albumin	21	21	20	21	21	22	24	25	25	27	26	30
# Albumin >= 4.0	7	9	9	8	12	15	9	8	9	11	12	13
Pop. Mean	3.6	3.8	3.8	3.7	3.8	3.9	3.8	3.8	3.8	3.8	3.9	3.9
Std. Deviation	0.49	0.50	0.52	0.50	0.65	0.44	0.48	0.41	0.48	0.42	0.40	0.42
<b>% Alb &gt;= 4.0</b>	<b>33%</b>	<b>43%</b>	<b>45%</b>	<b>38%</b>	<b>57%</b>	<b>68%</b>	<b>38%</b>	<b>32%</b>	<b>36%</b>	<b>41%</b>	<b>46%</b>	<b>43%</b>

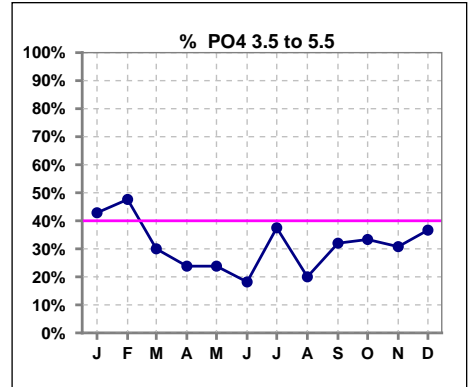


Methodology: a) All labs for 'Adequacy of Dialysis', 'Nutrition', 'Osteodystrophy', 'Anemia' and 'Diabetes' based on last value of month; b) BP's and #L processed are average of all values for month; c) Access data takes last access of month; d) Values for SGA and 'Infection Control' use most recent result.

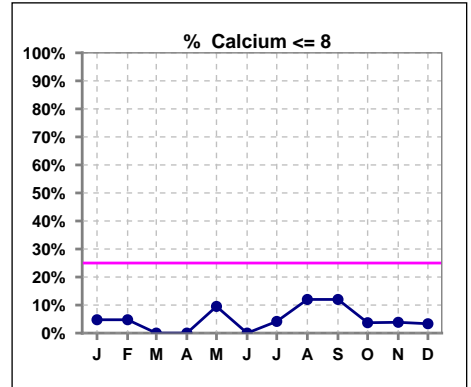
Lab methodology for PTH changed January 2012

**III. OSTEODYSTROPHY**

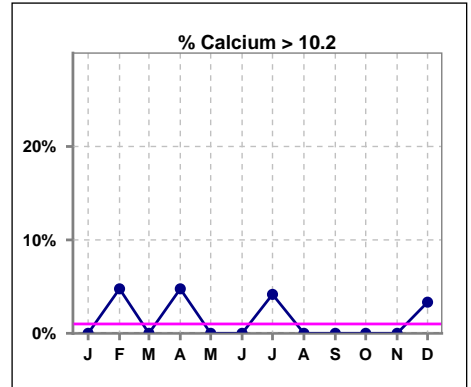
	Jan	Feb	Mar	Apr	May	Jun	Jul	Aug	Sep	Oct	Nov	Dec
# PO4	21	21	20	21	21	22	24	25	25	27	26	30
# PO4 3.5 to 5.5	9	10	6	5	5	4	9	5	8	9	8	11
Pop. Mean	6.2	6.3	6.8	6.6	6.7	6.2	6.4	6.9	6.6	6.4	6.6	6.4
Std. Deviation	2.17	2.14	2.24	1.96	2.59	2.25	1.82	2.41	2.05	2.14	1.87	2.00
% PO4 3.5 to 5.5	43%	48%	30%	24%	24%	18%	38%	20%	32%	33%	31%	37%



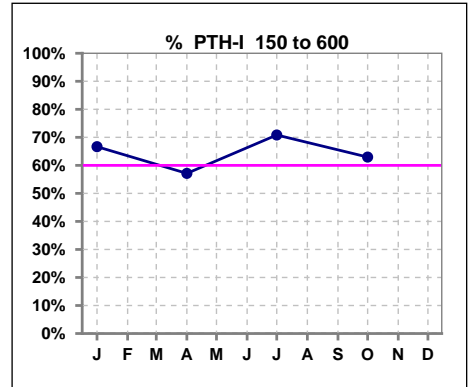
	Jan	Feb	Mar	Apr	May	Jun	Jul	Aug	Sep	Oct	Nov	Dec
# Calcium	21	21	20	21	21	22	24	25	25	27	26	30
# Calcium <= 8	1	1	0	0	2	0	1	3	3	1	1	1
Pop. Mean	9.1	9.3	9.3	9.4	9.2	9.4	9.3	8.9	9.1	9.2	9.1	9.3
Std. Deviation	0.62	0.73	0.44	0.64	0.71	0.55	0.65	0.70	0.75	0.69	0.71	0.67
% Calcium <= 8	5%	5%	0%	0%	10%	0%	4%	12%	12%	4%	4%	3%



	Jan	Feb	Mar	Apr	May	Jun	Jul	Aug	Sep	Oct	Nov	Dec
# Calcium	21	21	20	21	21	22	24	25	25	27	26	30
# Calcium > 10.2	0	1	0	1	0	0	1	0	0	0	0	1
Pop. Mean	9.1	9.3	9.3	9.4	9.2	9.4	9.3	8.9	9.1	9.2	9.1	9.3
Std. Deviation	0.62	0.73	0.44	0.64	0.71	0.55	0.65	0.70	0.75	0.69	0.71	0.67
% Calcium > 10.2	0%	5%	0%	5%	0%	0%	4%	0%	0%	0%	0%	3%



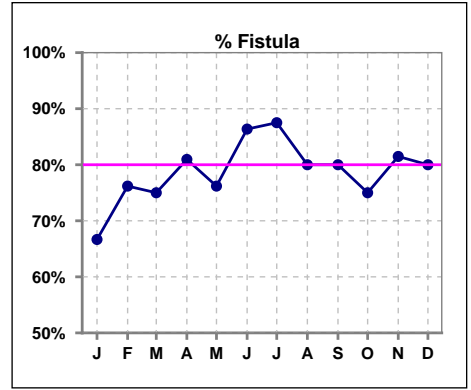
	Jan	Feb	Mar	Apr	May	Jun	Jul	Aug	Sep	Oct	Nov	Dec
# PTH-I	21			21			24			27		
# PTH-I 150 to 600	14			12			17			17		
Pop. Mean	476			406			483			552		
Std. Deviation	390			404			320			526		
% PTH-I 150 to 600	67%			57%			71%			63%		



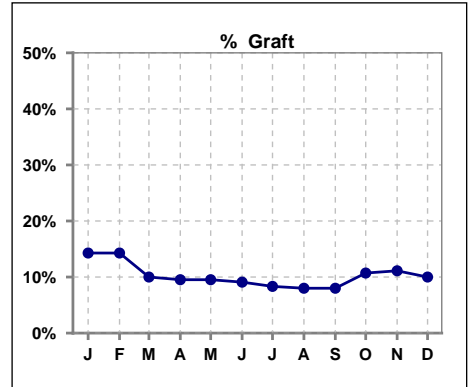
Methodology: a) All labs for 'Adequacy of Dialysis', 'Nutrition', 'Osteodystrophy', 'Anemia' and 'Diabetes' based on last value of month; b) BP's and #L processed are average of all values for month; c) Access data takes last access of month; d) Values for SGA and 'Infection Control' use most recent result.

**IV. ACCESS**

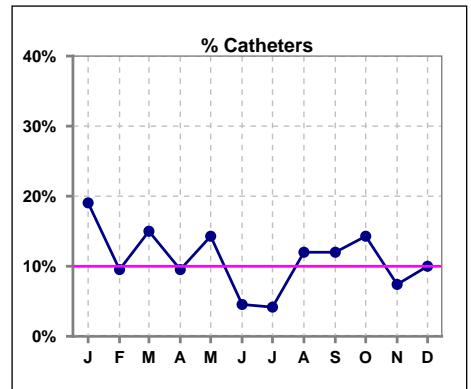
	Jan	Feb	Mar	Apr	May	Jun	Jul	Aug	Sep	Oct	Nov	Dec
# Access	21	21	20	21	21	22	24	25	25	28	27	30
# Fistula	14	16	15	17	16	19	21	20	20	21	22	24
% Fistula	67%	76%	75%	81%	76%	86%	88%	80%	80%	75%	81%	80%



	Jan	Feb	Mar	Apr	May	Jun	Jul	Aug	Sep	Oct	Nov	Dec
# Access	21	21	20	21	21	22	24	25	25	28	27	30
# Graft	3	3	2	2	2	2	2	2	2	3	3	3
% Graft	14%	14%	10%	10%	10%	9%	8%	8%	8%	11%	11%	10%



	Jan	Feb	Mar	Apr	May	Jun	Jul	Aug	Sep	Oct	Nov	Dec
# Access	21	21	20	21	21	22	24	25	25	28	27	30
# Catheters	4	2	3	2	3	1	1	3	3	4	2	3
% Catheters	19%	10%	15%	10%	14%	5%	4%	12%	12%	14%	7%	10%



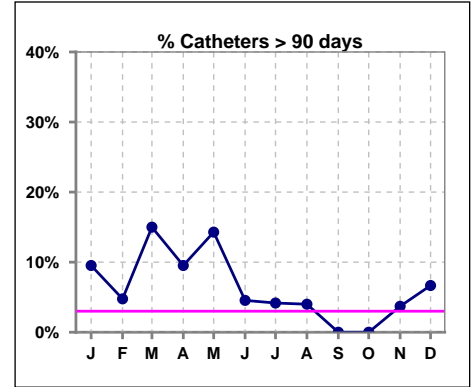
Methodology: a) All labs for 'Adequacy of Dialysis', 'Nutrition', 'Osteodystrophy', 'Anemia' and 'Diabetes' based on last value of month; b) BP's and #L processed are average of all values for month; c) Access data takes last access of month; d) Values for SGA and 'Infection Control' use most recent result.

**IV. ACCESS - CONT.**

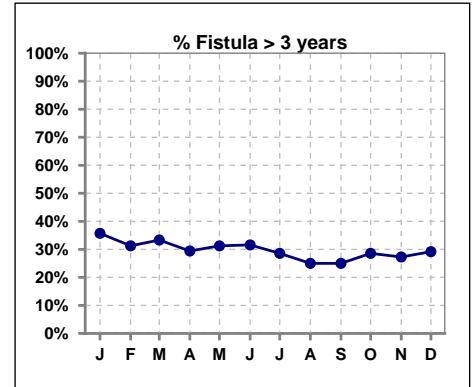
**Catheters > 90 days**

	Jan	Feb	Mar	Apr	May	Jun	Jul	Aug	Sep	Oct	Nov	Dec
# Access	21	21	20	21	21	22	24	25	25	28	27	30
# Catheters	2	1	3	2	3	1	1	1	0	0	1	2
% Catheters	10%	5%	15%	10%	14%	5%	4%	4%	0%	0%	4%	7%

Definition: Catheter in use on last treatment of the month



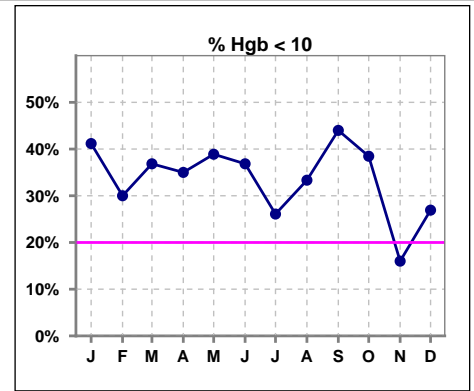
	Jan	Feb	Mar	Apr	May	Jun	Jul	Aug	Sep	Oct	Nov	Dec
# Fistula	14	16	15	17	16	19	21	20	20	21	22	24
# Fistula > 3 yrs	5	5	5	5	5	6	6	5	5	6	6	7
% Fistula > 3 yrs	36%	31%	33%	29%	31%	32%	29%	25%	25%	29%	27%	29%



**V. ANEMIA**

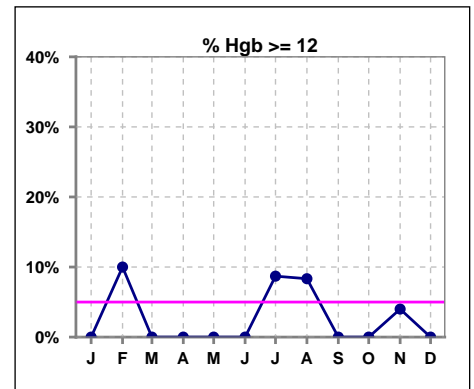
	Jan	Feb	Mar	Apr	May	Jun	Jul	Aug	Sep	Oct	Nov	Dec
# Hgb	17	20	19	20	18	19	23	24	25	26	25	26
# Hgb < 10	7	6	7	7	7	7	6	8	11	10	4	7
Pop. Mean	10.1	10.6	10.2	10.4	10.3	10.4	10.8	10.4	10.1	10.1	10.7	10.6
Std. Deviation	1.1	1.3	0.9	1.0	1.4	1.1	1.1	1.1	1.1	1.2	1.1	1.0
% Hgb < 10	41%	30%	37%	35%	39%	37%	26%	33%	44%	38%	16%	27%

Note: Excludes patients who received no ESA in month.



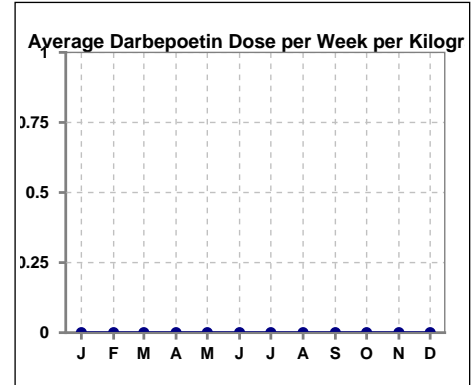
	Jan	Feb	Mar	Apr	May	Jun	Jul	Aug	Sep	Oct	Nov	Dec
# Hgb	17	20	18	20	18	19	23	24	25	26	25	26
# Hgb >= 12	0	2	0	0	0	0	2	2	0	0	1	0
Pop. Mean	10.1	10.6	10.2	10.4	10.3	10.4	10.8	10.4	10.1	10.1	10.7	10.6
Std. Deviation	1.1	1.3	1.0	1.0	1.4	1.1	1.1	1.1	1.1	1.2	1.1	1.0
% Hgb >= 12	0%	10%	0%	0%	0%	0%	9%	8%	0%	0%	4%	0%

Note: Excludes patients who received no ESA in month.



**Average Darbepoetin Dose per Week per Kilogram**

	Jan	Feb	Mar	Apr	May	Jun	Jul	Aug	Sep	Oct	Nov	Dec
# Average Darbepoetin	0	0	0	0	0	0	0	0	0	0	0	0

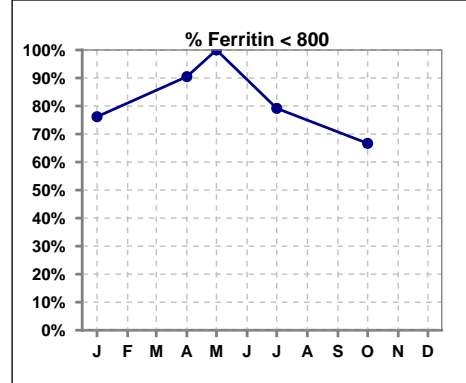




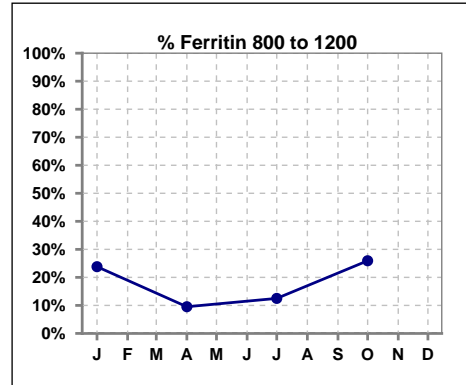
**V. ANEMIA - CONT.**

**Iron Profile**

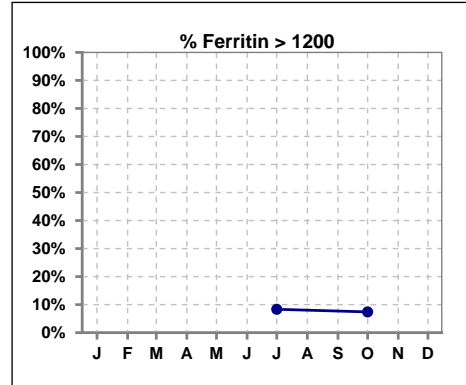
	Jan	Feb	Mar	Apr	May	Jun	Jul	Aug	Sep	Oct	Nov	Dec
# Ferritin	21			21	3		24			27		
# Ferritin < 800	16			19	3		19			18		
Pop. Mean	628			542	211		542			599		
Std. Deviation	293			254	96		377			356		
<b>% Ferritin &lt; 800</b>	<b>76%</b>			<b>90%</b>	<b>100%</b>		<b>79%</b>			<b>67%</b>		



	Jan	Feb	Mar	Apr	May	Jun	Jul	Aug	Sep	Oct	Nov	Dec
# Ferritin	21			21	3		24			27		
# Ferritin 800 to 1200	5			2			3			7		
Pop. Mean	628			542	211		542			599		
Std. Deviation	293			254	96		377			356		
<b>% Ferritin 800 to 1200</b>	<b>24%</b>			<b>10%</b>			<b>13%</b>			<b>26%</b>		

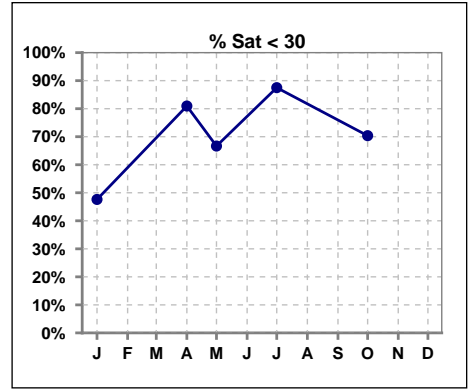


	Jan	Feb	Mar	Apr	May	Jun	Jul	Aug	Sep	Oct	Nov	Dec
# Ferritin	21			21	3		24			27		
# Ferritin > 1200							2			2		
Pop. Mean	628			542	211		542			599		
Std. Deviation	293			254	96		377			356		
<b>% Ferritin &gt; 1200</b>							<b>8%</b>			<b>7%</b>		

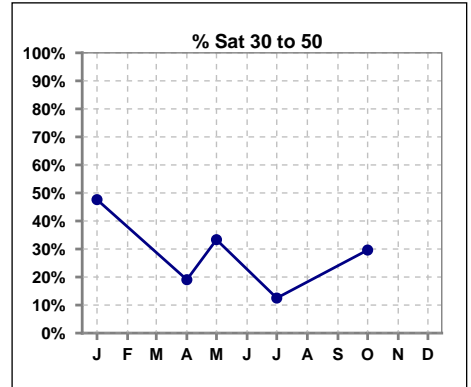


**V. ANEMIA - CONT.**

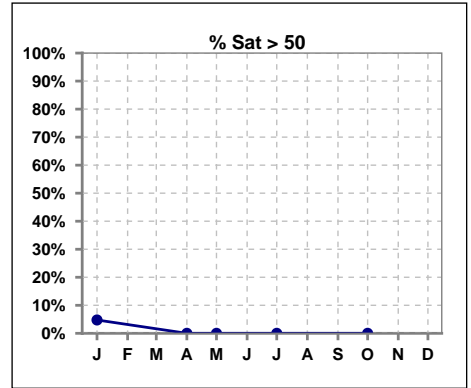
	Jan	Feb	Mar	Apr	May	Jun	Jul	Aug	Sep	Oct	Nov	Dec
# % Sat	21			21	3		24			27		
# % Sat < 30	10			17	2		21			19		
Pop. Mean	32			23	23		22			26		
Std. Deviation	14			8	12		8			8		
<b>%% Sat &lt; 30</b>	<b>48%</b>			<b>81%</b>	<b>67%</b>		<b>88%</b>			<b>70%</b>		



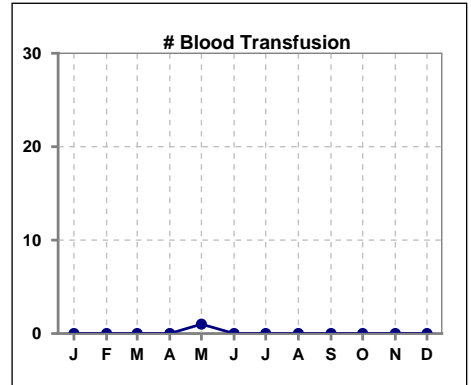
	Jan	Feb	Mar	Apr	May	Jun	Jul	Aug	Sep	Oct	Nov	Dec
# % Sat	21			21	3		24			27		
# % Sat 30 to 50	10			4	1		3			8		
Pop. Mean	32			23	23		22			26		
Std. Deviation	14			8	12		8			8		
<b>%% Sat 30 to 50</b>	<b>48%</b>			<b>19%</b>	<b>33%</b>		<b>13%</b>			<b>30%</b>		



	Jan	Feb	Mar	Apr	May	Jun	Jul	Aug	Sep	Oct	Nov	Dec
# % Sat	21			21	3		24			27		
# % Sat > 50	1			0	0		0			0		
Pop. Mean	32			23	23		22			26		
Std. Deviation	14			8	12		8			8		
<b>%% Sat &gt; 50</b>	<b>5%</b>			<b>0%</b>	<b>0%</b>		<b>0%</b>			<b>0%</b>		



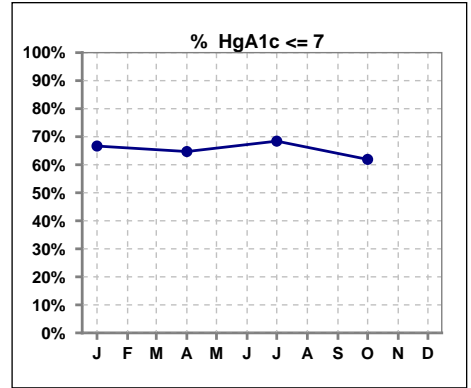
	Jan	Feb	Mar	Apr	May	Jun	Jul	Aug	Sep	Oct	Nov	Dec
# Patient	21	21	20	22	21	23	24	25	25	28	27	30
# Blood Transfusion	0	0	0	0	1	0	0	0	0	0	0	0



Methodology: a) All labs for 'Adequacy of Dialysis', 'Nutrition', 'Osteodystrophy', 'Anemia' and 'Diabetes' based on last value of month; b) BP's and #L processed are average of all values for month; c) Access data takes last access of month; d) Values for SGA and 'Infection Control' use most recent result.

**VI. Diabetes**

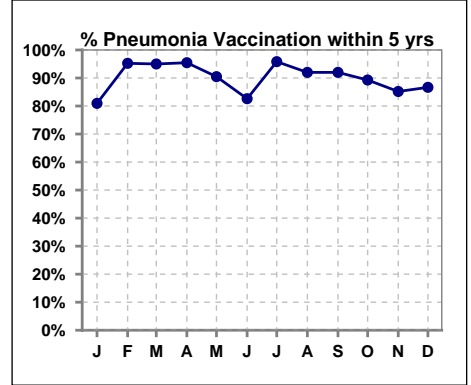
	Jan	Feb	Mar	Apr	May	Jun	Jul	Aug	Sep	Oct	Nov	Dec
# HgA1c	15			17			19			21		
# HgA1c <= 7	10			11			13			13		
Pop. Mean	7.0			7.0			7.0			6.9		
Std. Deviation	1.90			1.90			2.00			2.19		
<b>% HgA1c &lt;= 7</b>	<b>67%</b>			<b>65%</b>			<b>68%</b>			<b>62%</b>		



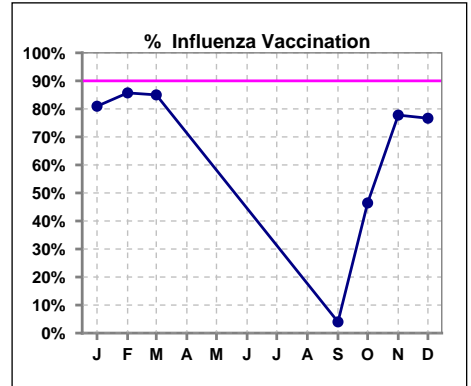
**VII. Infection Control**

**Pneumonia vaccination within the past five years**

	Jan	Feb	Mar	Apr	May	Jun	Jul	Aug	Sep	Oct	Nov	Dec
# Patient	21	21	20	22	21	23	24	25	25	28	27	30
# Pneumonia	17	20	19	21	19	19	23	23	23	25	23	26
% Pneumonia	81%	95%	95%	95%	90%	83%	96%	92%	92%	89%	85%	87%



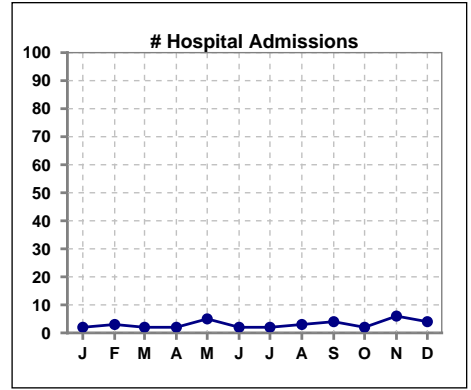
	Jan	Feb	Mar	Apr	May	Jun	Jul	Aug	Sep	Oct	Nov	Dec
# Patient	21	21	20						25	28	27	30
# Influenza	17	18	17						1	13	21	23
% Influenza	81%	86%	85%						4%	46%	78%	77%



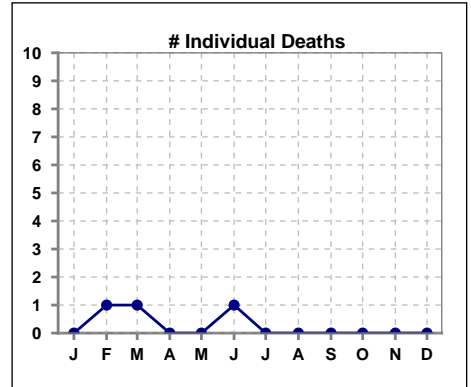
Methodology: a) All labs for 'Adequacy of Dialysis', 'Nutrition', 'Osteodystrophy', 'Anemia' and 'Diabetes' based on last value of month; b) BP's and #L processed are average of all values for month; c) Access data takes last access of month; d) Values for SGA and 'Infection Control' use most recent result.

**VIII. Outcome measures**

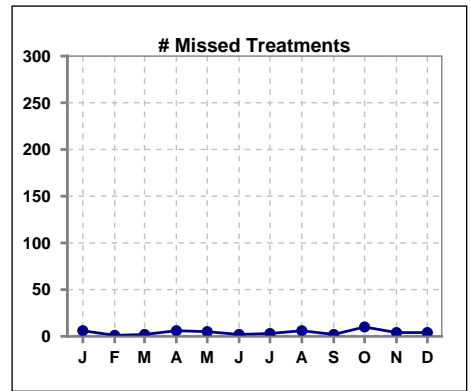
	Jan	Feb	Mar	Apr	May	Jun	Jul	Aug	Sep	Oct	Nov	Dec
# Patient	21	21	20	22	21	23	24	25	25	28	27	30
# Hospital Admissions	2	3	2	2	5	2	2	3	4	2	6	4



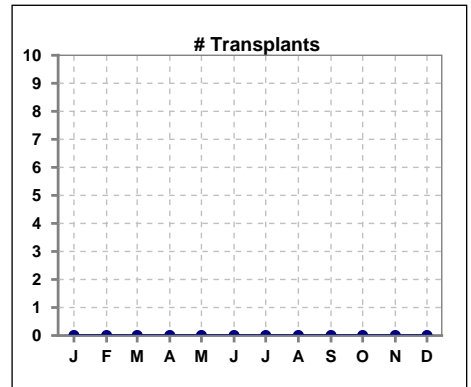
	Jan	Feb	Mar	Apr	May	Jun	Jul	Aug	Sep	Oct	Nov	Dec
# Patient	21	21	20	22	21	23	24	25	25	28	27	30
# Individual Deaths	0	1	1	0	0	1	0	0	0	0	0	0



	Jan	Feb	Mar	Apr	May	Jun	Jul	Aug	Sep	Oct	Nov	Dec
# Patient	21	21	20	22	21	23	24	25	25	28	27	30
# Missed Treatments	6	1	2	6	5	2	3	6	2	10	4	4



	Jan	Feb	Mar	Apr	May	Jun	Jul	Aug	Sep	Oct	Nov	Dec
# Patient	21	21	20	22	21	23	24	25	25	28	27	30
# Transplants	0	0	0	0	0	0	0	0	0	0	0	0



Methodology: a) All labs for 'Adequacy of Dialysis', 'Nutrition', 'Osteodystrophy', 'Anemia' and 'Diabetes' based on last value of month; b) BP's and #L processed are average of all values for month; c) Access data takes last access of month; d) Values for SGA and 'Infection Control' use most recent result.