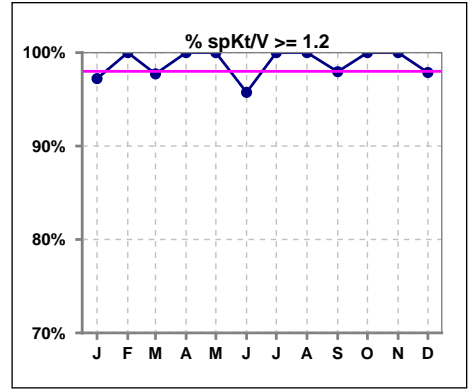
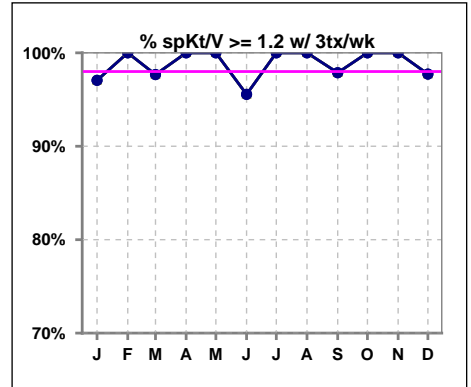


I. ADEQUACY OF DIALYSIS

	Jan	Feb	Mar	Apr	May	Jun	Jul	Aug	Sep	Oct	Nov	Dec
# spKt/V	36	36	44	46	49	47	48	46	49	46	45	47
# spKt/V >= 1.2	35	36	43	46	49	45	48	46	48	46	45	46
Pop. Mean	1.54	1.53	1.56	1.49	1.52	1.50	1.52	1.50	1.52	1.59	1.58	1.61
Std. Deviation	0.22	0.24	0.25	0.19	0.21	0.24	0.25	0.20	0.22	0.25	0.20	0.24
% spKt/V >= 1.2	97%	100%	98%	100%	100%	96%	100%	100%	98%	100%	100%	98%

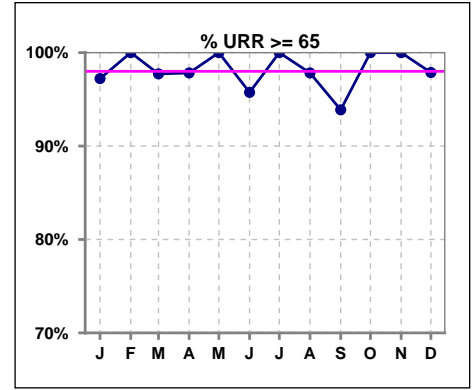


	Jan	Feb	Mar	Apr	May	Jun	Jul	Aug	Sep	Oct	Nov	Dec
# spKt/V w/ 3tx/wk	34	35	43	43	47	45	46	44	47	44	43	44
# spKt/V >= 1.2 w/3tx/wk	33	35	42	43	47	43	46	44	46	44	43	43
Pop. Mean	1.53	1.54	1.54	1.50	1.52	1.51	1.53	1.51	1.52	1.60	1.59	1.62
Std. Deviation	0.22	0.24	0.23	0.19	0.22	0.24	0.25	0.20	0.22	0.25	0.20	0.25
% >= 1.2 w/3tx/wk	97%	100%	98%	100%	100%	96%	100%	100%	98%	100%	100%	98%

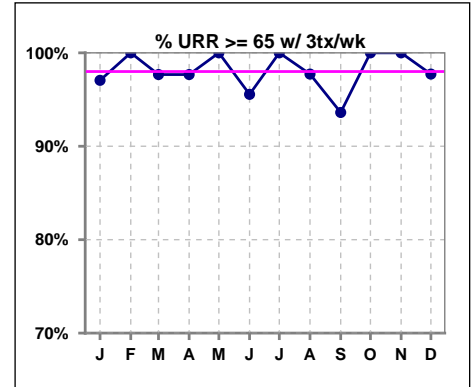


I. ADEQUACY OF DIALYSIS - CONT.

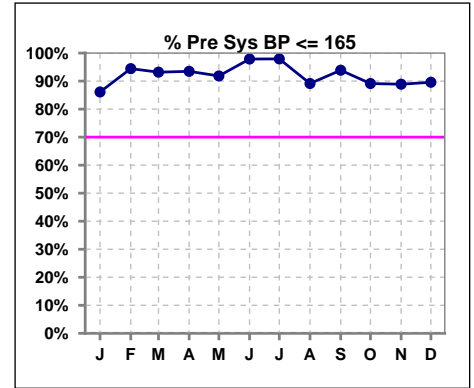
	Jan	Feb	Mar	Apr	May	Jun	Jul	Aug	Sep	Oct	Nov	Dec
# URR	36	36	44	46	49	47	48	46	49	46	45	47
# URR >= 65	35	36	43	45	49	45	48	45	46	46	45	46
Pop. Mean	73	73	74	72	73	73	73	73	73	74	75	75
Std. Deviation	4.83	4.81	5.24	4.36	4.66	5.50	5.20	4.61	5.45	5.14	4.39	5.59
% URR >= 65	97%	100%	98%	98%	100%	96%	100%	98%	94%	100%	100%	98%



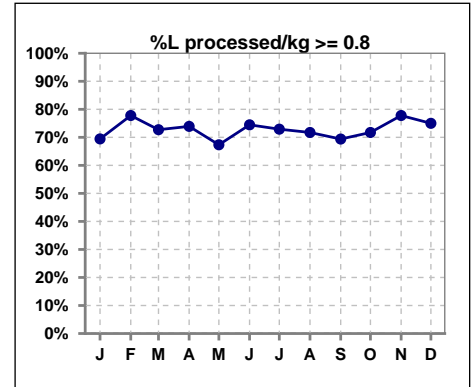
	Jan	Feb	Mar	Apr	May	Jun	Jul	Aug	Sep	Oct	Nov	Dec
# URR w/ 3tx/wk	34	35	43	43	47	45	46	44	47	44	43	44
# URR>=65 w/ 3tx/wk	33	35	42	42	47	43	46	43	44	44	43	43
Pop. Mean	73	73	73	73	73	73	73	73	73	75	75	75
Std. Deviation	4.97	4.84	4.93	4.36	4.69	5.56	5.22	4.66	5.52	5.15	4.41	5.70
% URR>=65 w/ 3tx/wk	97%	100%	98%	98%	100%	96%	100%	98%	94%	100%	100%	98%



	Jan	Feb	Mar	Apr	May	Jun	Jul	Aug	Sep	Oct	Nov	Dec
# Pre Sys BP	36	36	44	46	49	47	48	46	49	46	45	48
# Pre Sys BP <= 165	31	34	43	43	46	46	47	41	46	42	41	43
Pop. Mean	143	141	139	141	142	138	139	142	140	143	143	144
Std. Deviation	16.6	15.0	15.9	16.6	17.2	14.8	14.4	17.5	17.8	16.1	18.4	18.6
% Pre Sys BP <= 165	86%	94%	93%	93%	92%	98%	98%	89%	94%	89%	89%	90%



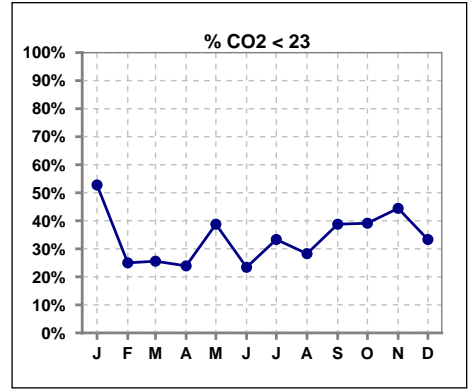
	Jan	Feb	Mar	Apr	May	Jun	Jul	Aug	Sep	Oct	Nov	Dec
# L processed/kg	36	36	44	46	49	47	48	46	49	46	45	48
# L processed/kg >= 0.8	25	28	32	34	33	35	35	33	34	33	35	36
Pop. Mean	1	1	1	1	1	1	1	1	1	1	1	1
Std. Deviation	0.3	0.2	0.3	0.3	0.3	0.3	0.3	0.3	0.4	0.2	0.2	0.2
% L processed/kg >= 0.8	69%	78%	73%	74%	67%	74%	73%	72%	69%	72%	78%	75%



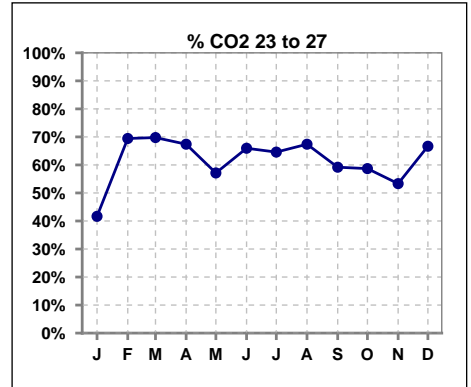
Methodology: a) All labs for 'Adequacy of Dialysis', 'Nutrition', 'Osteodystrophy', 'Anemia' and 'Diabetes' based on last value of month; b) BP's and #L processed are average of all values for month; c) Access data takes last access of month; d) Values for SGA and 'Infection Control' use most recent result.

I. ADEQUACY OF DIALYSIS - CONT.

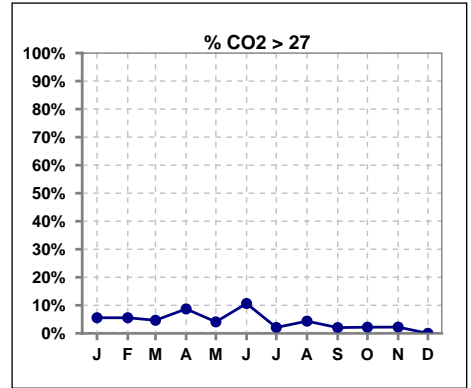
	Jan	Feb	Mar	Apr	May	Jun	Jul	Aug	Sep	Oct	Nov	Dec
# CO2	36	36	43	46	49	47	48	46	49	46	45	48
# CO2 < 23	19	9	11	11	19	11	16	13	19	18	20	16
Pop. Mean	23	24	24	24	23	25	23	24	23	23	23	23
Std. Deviation	2.33	2.52	2.33	2.54	2.66	2.36	2.92	2.66	2.25	2.73	2.38	2.27
% CO2 < 23	53%	25%	26%	24%	39%	23%	33%	28%	39%	39%	44%	33%



	Jan	Feb	Mar	Apr	May	Jun	Jul	Aug	Sep	Oct	Nov	Dec
# CO2	36	36	43	46	49	47	48	46	49	46	45	48
# CO2 23 to 27	15	25	30	31	28	31	31	31	29	27	24	32
Pop. Mean	23	24	24	24	23	25	23	24	23	23	23	23
Std. Deviation	2.33	2.52	2.33	2.54	2.66	2.36	2.92	2.66	2.25	2.73	2.38	2.27
% CO2 23 to 27	42%	69%	70%	67%	57%	66%	65%	67%	59%	59%	53%	67%



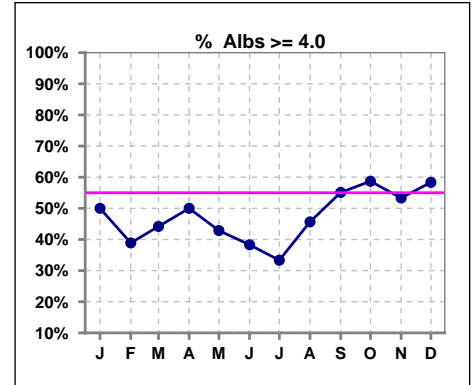
	Jan	Feb	Mar	Apr	May	Jun	Jul	Aug	Sep	Oct	Nov	Dec
# CO2	36	36	43	46	49	47	48	46	49	46	45	48
# CO2 > 27	2	2	2	4	2	5	1	2	1	1	1	0
Pop. Mean	23	24	24	24	23	25	23	24	23	23	23	23
Std. Deviation	2.33	2.52	2.33	2.54	2.66	2.36	2.92	2.66	2.25	2.73	2.38	2.27
% CO2 > 27	6%	6%	5%	9%	4%	11%	2%	4%	2%	2%	2%	0%



*Albumin values use BCG method - as of July 2001

II. NUTRITION

	Jan	Feb	Mar	Apr	May	Jun	Jul	Aug	Sep	Oct	Nov	Dec
# Albumin	36	36	43	46	49	47	48	46	49	46	45	48
# Albumin >= 4.0	18	14	19	23	21	18	16	21	27	27	24	28
Pop. Mean	3.9	3.8	3.9	3.9	3.8	3.8	3.8	3.8	3.9	4.0	3.9	3.9
Std. Deviation	0.47	0.37	0.45	0.39	0.39	0.42	0.34	0.38	0.37	0.37	0.37	0.35
% Alb >= 4.0	50%	39%	44%	50%	43%	38%	33%	46%	55%	59%	53%	58%

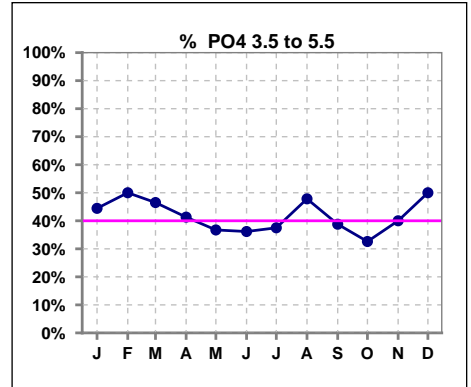


Methodology: a) All labs for 'Adequacy of Dialysis', 'Nutrition', 'Osteodystrophy', 'Anemia' and 'Diabetes' based on last value of month; b) BP's and #L processed are average of all values for month; c) Access data takes last access of month; d) Values for SGA and 'Infection Control' use most recent result.

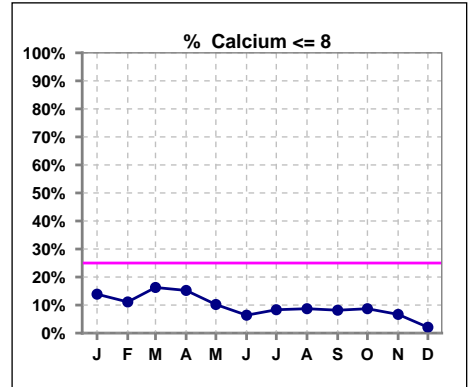
Lab methodology for PTH changed January 2012

III. OSTEODYSTROPHY

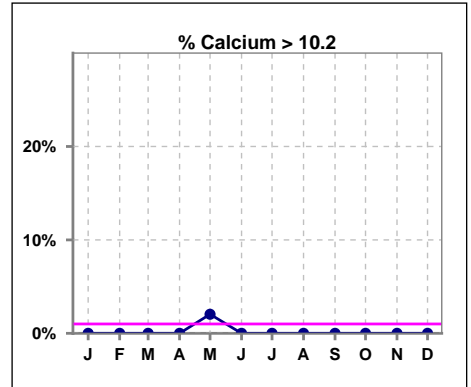
	Jan	Feb	Mar	Apr	May	Jun	Jul	Aug	Sep	Oct	Nov	Dec
# PO4	36	36	43	46	49	47	48	46	49	46	45	48
# PO4 3.5 to 5.5	16	18	20	19	18	17	18	22	19	15	18	24
Pop. Mean	6.4	5.4	5.7	5.7	6.2	6.1	6.1	5.9	6.2	6.2	6.0	5.7
Std. Deviation	2.25	1.51	1.54	2.03	1.97	1.62	1.65	1.71	2.24	1.95	1.99	1.95
% PO4 3.5 to 5.5	44%	50%	47%	41%	37%	36%	38%	48%	39%	33%	40%	50%



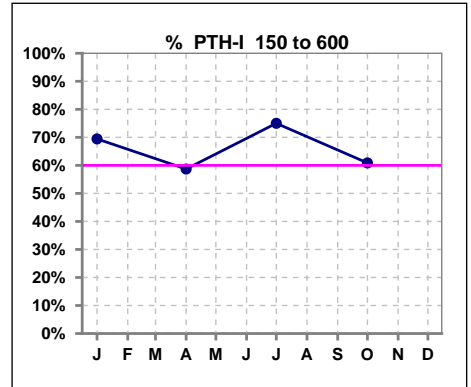
	Jan	Feb	Mar	Apr	May	Jun	Jul	Aug	Sep	Oct	Nov	Dec
# Calcium	36	36	43	46	49	47	48	46	49	46	45	48
# Calcium <= 8	5	4	7	7	5	3	4	4	4	4	3	1
Pop. Mean	9.0	9.1	8.9	9.0	8.9	9.0	9.0	9.1	9.1	9.0	9.1	9.1
Std. Deviation	0.71	0.65	0.93	0.74	0.70	0.64	0.65	0.67	0.68	0.65	0.68	0.60
% Calcium <= 8	14%	11%	16%	15%	10%	6%	8%	9%	8%	9%	7%	2%



	Jan	Feb	Mar	Apr	May	Jun	Jul	Aug	Sep	Oct	Nov	Dec
# Calcium	36	36	43	46	49	47	48	46	49	46	45	48
# Calcium > 10.2	0	0	0	0	1	0	0	0	0	0	0	0
Pop. Mean	9.0	9.1	8.9	9.0	8.9	9.0	9.0	9.1	9.1	9.0	9.1	9.1
Std. Deviation	0.71	0.65	0.93	0.74	0.70	0.64	0.65	0.67	0.68	0.65	0.68	0.60
% Calcium > 10.2	0%	0%	0%	0%	2%	0%	0%	0%	0%	0%	0%	0%



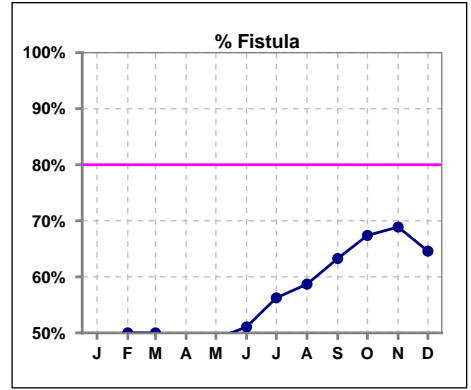
	Jan	Feb	Mar	Apr	May	Jun	Jul	Aug	Sep	Oct	Nov	Dec
# PTH-I	36			46			48			46		
# PTH-I 150 to 600	25			27			36			28		
Pop. Mean	540			483			370			416		
Std. Deviation	453			534			224			294		
% PTH-I 150 to 600	69%			59%			75%			61%		



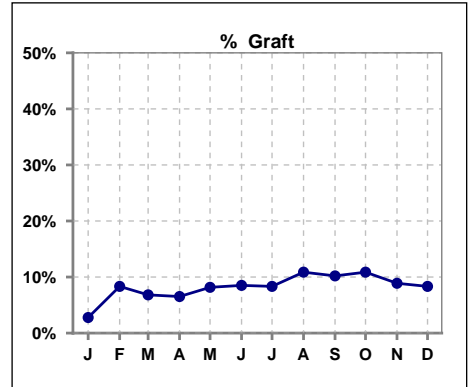
Methodology: a) All labs for 'Adequacy of Dialysis', 'Nutrition', 'Osteodystrophy', 'Anemia' and 'Diabetes' based on last value of month; b) BP's and #L processed are average of all values for month; c) Access data takes last access of month; d) Values for SGA and 'Infection Control' use most recent result.

IV. ACCESS

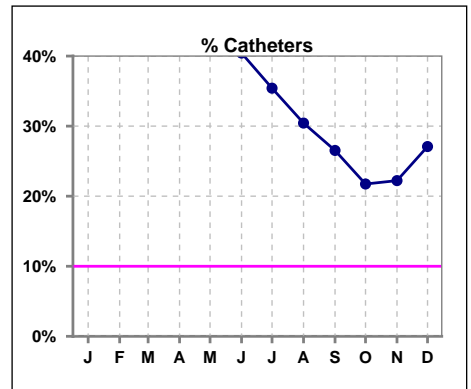
	Jan	Feb	Mar	Apr	May	Jun	Jul	Aug	Sep	Oct	Nov	Dec
# Access	36	36	44	46	49	47	48	46	49	46	45	48
# Fistula	16	18	22	22	24	24	27	27	31	31	31	31
% Fistula	44%	50%	50%	48%	49%	51%	56%	59%	63%	67%	69%	65%



	Jan	Feb	Mar	Apr	May	Jun	Jul	Aug	Sep	Oct	Nov	Dec
# Access	36	36	44	46	49	47	48	46	49	46	45	48
# Graft	1	3	3	3	4	4	4	5	5	5	4	4
% Graft	3%	8%	7%	7%	8%	9%	8%	11%	10%	11%	9%	8%



	Jan	Feb	Mar	Apr	May	Jun	Jul	Aug	Sep	Oct	Nov	Dec
# Access	36	36	44	46	49	47	48	46	49	46	45	48
# Catheters	19	15	19	21	21	19	17	14	13	10	10	13
% Catheters	53%	42%	43%	46%	43%	40%	35%	30%	27%	22%	22%	27%



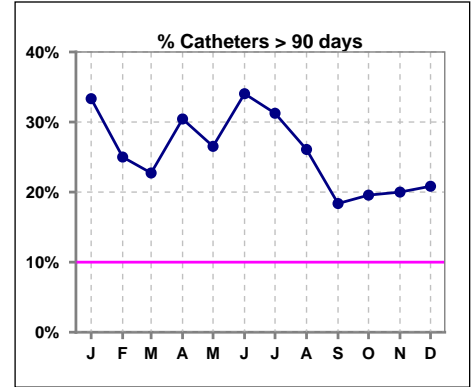
Methodology: a) All labs for 'Adequacy of Dialysis', 'Nutrition', 'Osteodystrophy', 'Anemia' and 'Diabetes' based on last value of month; b) BP's and #L processed are average of all values for month; c) Access data takes last access of month; d) Values for SGA and 'Infection Control' use most recent result.

IV. ACCESS - CONT.

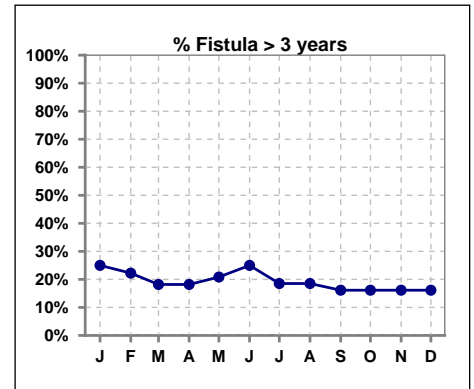
Catheters > 90 days

	Jan	Feb	Mar	Apr	May	Jun	Jul	Aug	Sep	Oct	Nov	Dec
# Access	36	36	44	46	49	47	48	46	49	46	45	48
# Catheters	12	9	10	14	13	16	15	12	9	9	9	10
% Catheters	33%	25%	23%	30%	27%	34%	31%	26%	18%	20%	20%	21%

Definition: Catheter in use on last treatment of the month



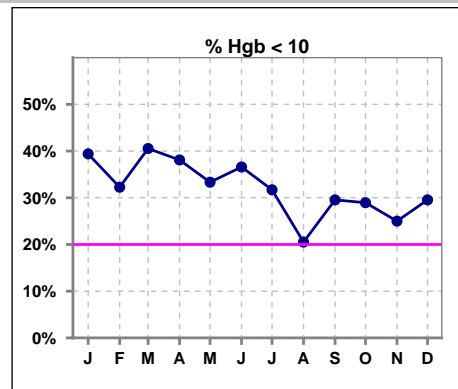
	Jan	Feb	Mar	Apr	May	Jun	Jul	Aug	Sep	Oct	Nov	Dec
# Fistula	16	18	22	22	24	24	27	27	31	31	31	31
# Fistula > 3 yrs	4	4	4	4	5	6	5	5	5	5	5	5
% Fistula > 3 yrs	25%	22%	18%	18%	21%	25%	19%	19%	16%	16%	16%	16%



V. ANEMIA

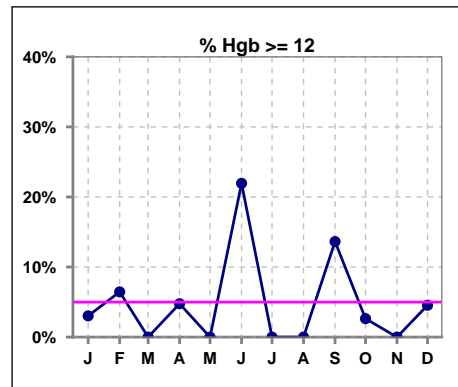
	Jan	Feb	Mar	Apr	May	Jun	Jul	Aug	Sep	Oct	Nov	Dec
# Hgb	33	31	37	42	42	41	41	39	44	38	40	44
# Hgb < 10	13	10	15	16	14	15	13	8	13	11	10	13
Pop. Mean	10.1	10.4	10.3	10.3	10.4	10.7	10.2	10.5	10.6	10.5	10.6	10.5
Std. Deviation	1.3	1.3	1.1	1.3	1.1	1.8	1.2	1.1	1.2	1.2	0.9	1.0
% Hgb < 10	39%	32%	41%	38%	33%	37%	32%	21%	30%	29%	25%	30%

Note: Excludes patients who received no ESA in month.



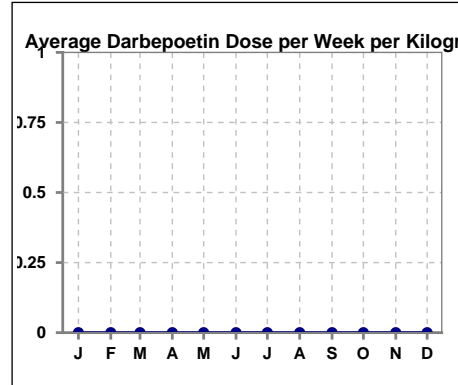
	Jan	Feb	Mar	Apr	May	Jun	Jul	Aug	Sep	Oct	Nov	Dec
# Hgb	33	31	37	42	42	41	41	39	44	38	40	44
# Hgb >= 12	1	2	0	2	0	9	0	0	6	1	0	2
Pop. Mean	10.1	10.4	10.3	10.3	10.4	10.7	10.2	10.5	10.6	10.5	10.6	10.5
Std. Deviation	1.3	1.3	1.1	1.3	1.1	1.8	1.2	1.1	1.2	1.2	0.9	1.0
% Hgb >= 12	3%	6%	0%	5%	0%	22%	0%	0%	14%	3%	0%	5%

Note: Excludes patients who received no ESA in month.



Average Darbepoetin Dose per Week per Kilogram

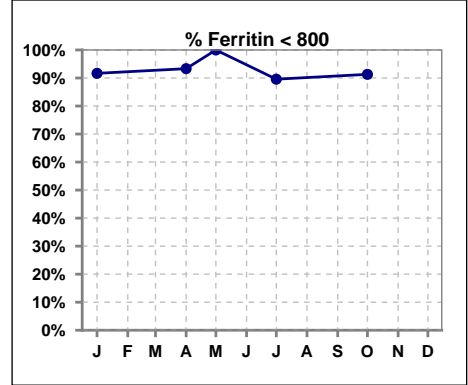
	Jan	Feb	Mar	Apr	May	Jun	Jul	Aug	Sep	Oct	Nov	Dec
# Average Darbepoetin	0	0	0	0	0	0	0	0	0	0	0	0



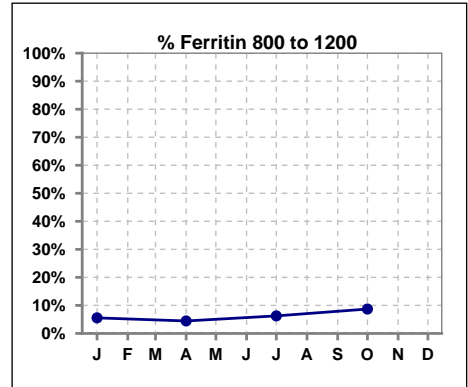
V. ANEMIA - CONT.

Iron Profile

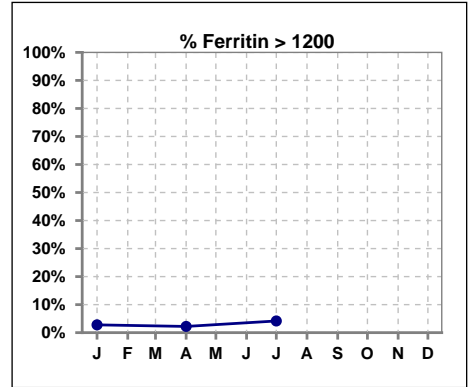
	Jan	Feb	Mar	Apr	May	Jun	Jul	Aug	Sep	Oct	Nov	Dec
# Ferritin	36			45	3		48			46		
# Ferritin < 800	33			42	3		43			42		
Pop. Mean	417			409	218		405			434		
Std. Deviation	467			285	174		328			275		
% Ferritin < 800	92%			93%	100%		90%			91%		



	Jan	Feb	Mar	Apr	May	Jun	Jul	Aug	Sep	Oct	Nov	Dec
# Ferritin	36			45	3		48			46		
# Ferritin 800 to 1200	2			2			3			4		
Pop. Mean	417			409	218		405			434		
Std. Deviation	467			285	174		328			275		
% Ferritin 800 to 1200	6%			4%			6%			9%		

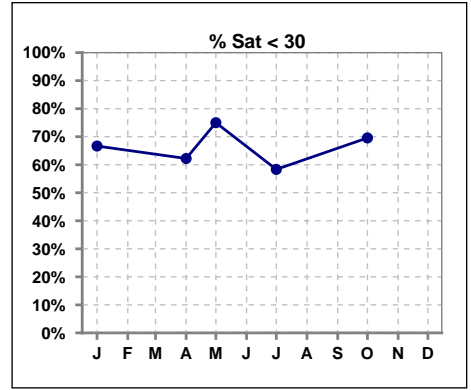


	Jan	Feb	Mar	Apr	May	Jun	Jul	Aug	Sep	Oct	Nov	Dec
# Ferritin	36			45	3		48			46		
# Ferritin > 1200	1			1			2					
Pop. Mean	417			409	218		405			434		
Std. Deviation	467			285	174		328			275		
% Ferritin > 1200	3%			2%			4%					

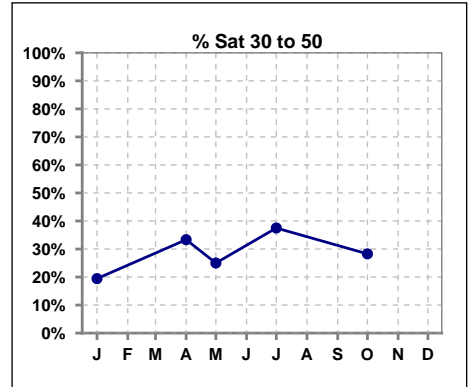


V. ANEMIA - CONT.

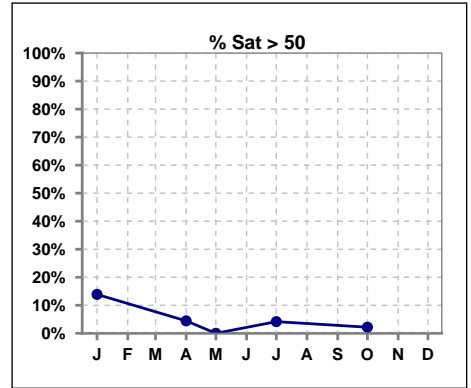
	Jan	Feb	Mar	Apr	May	Jun	Jul	Aug	Sep	Oct	Nov	Dec
# % Sat	36			45	4		48			46		
# % Sat < 30	24			28	3		28			32		
Pop. Mean	30			26	25		28			26		
Std. Deviation	19			12	13		15			10		
% % Sat < 30	67%			62%	75%		58%			70%		



	Jan	Feb	Mar	Apr	May	Jun	Jul	Aug	Sep	Oct	Nov	Dec
# % Sat	36			45	4		48			46		
# % Sat 30 to 50	7			15	1		18			13		
Pop. Mean	30			26	25		28			26		
Std. Deviation	19			12	13		15			10		
% % Sat 30 to 50	19%			33%	25%		38%			28%		



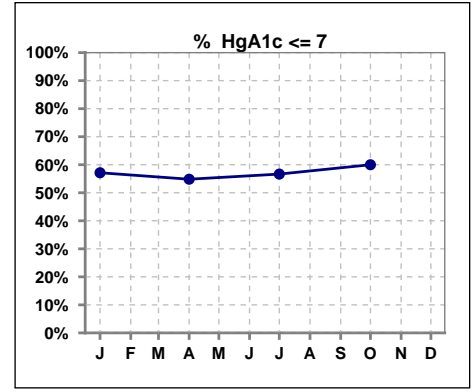
	Jan	Feb	Mar	Apr	May	Jun	Jul	Aug	Sep	Oct	Nov	Dec
# % Sat	36			45	4		48			46		
# % Sat > 50	5			2	0		2			1		
Pop. Mean	30			26	25		28			26		
Std. Deviation	19			12	13		15			10		
% % Sat > 50	14%			4%	0%		4%			2%		



Methodology: a) All labs for 'Adequacy of Dialysis', 'Nutrition', 'Osteodystrophy', 'Anemia' and 'Diabetes' based on last value of month; b) BP's and #L processed are average of all values for month; c) Access data takes last access of month; d) Values for SGA and 'Infection Control' use most recent result.

VI. Diabetes

	Jan	Feb	Mar	Apr	May	Jun	Jul	Aug	Sep	Oct	Nov	Dec
# HgA1c	28			31			30			30		
# HgA1c <= 7	16			17			17			18		
Pop. Mean	6.9			6.6			6.9			6.8		
Std. Deviation	1.68			1.33			1.69			1.69		
% HgA1c <= 7	57%			55%			57%			60%		

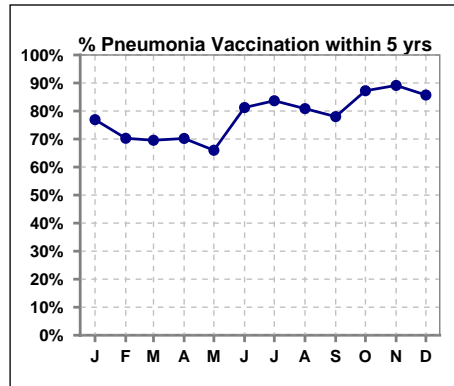


Methodology: a) All labs for 'Adequacy of Dialysis', 'Nutrition', 'Osteodystrophy', 'Anemia' and 'Diabetes' based on last value of month; b) BP's and #L processed are average of all values for month; c) Access data takes last access of month; d) Values for SGA and 'Infection Control' use most recent result.

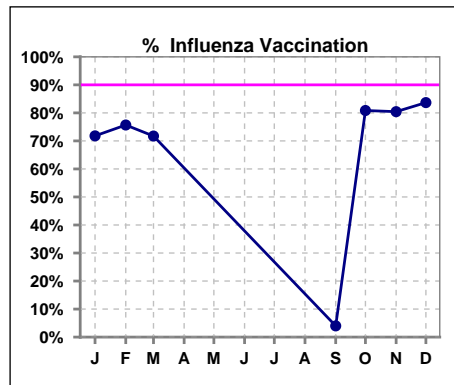
VII. Infection Control

Pneumonia vaccination within the past five years

	Jan	Feb	Mar	Apr	May	Jun	Jul	Aug	Sep	Oct	Nov	Dec
# Patient	39	37	46	47	50	48	49	47	50	47	46	49
# Pneumonia	30	26	32	33	33	39	41	38	39	41	41	42
% Pneumonia	77%	70%	70%	70%	66%	81%	84%	81%	78%	87%	89%	86%



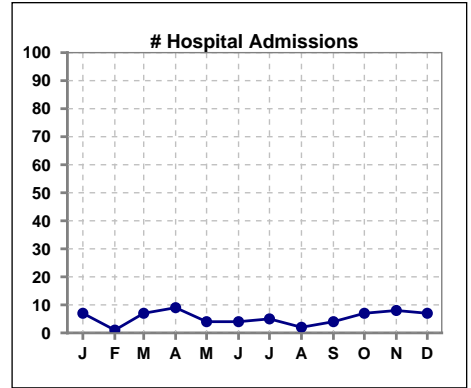
	Jan	Feb	Mar	Apr	May	Jun	Jul	Aug	Sep	Oct	Nov	Dec
# Patient	39	37	46						50	47	46	49
# Influenza	28	28	33						2	38	37	41
% Influenza	72%	76%	72%						4%	81%	80%	84%



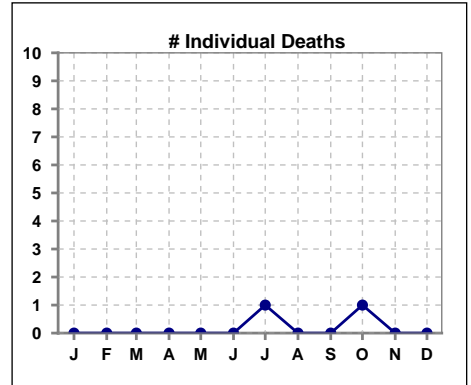
Methodology: a) All labs for 'Adequacy of Dialysis', 'Nutrition', 'Osteodystrophy', 'Anemia' and 'Diabetes' based on last value of month; b) BP's and #L processed are average of all values for month; c) Access data takes last access of month; d) Values for SGA and 'Infection Control' use most recent result.

VIII. Outcome measures

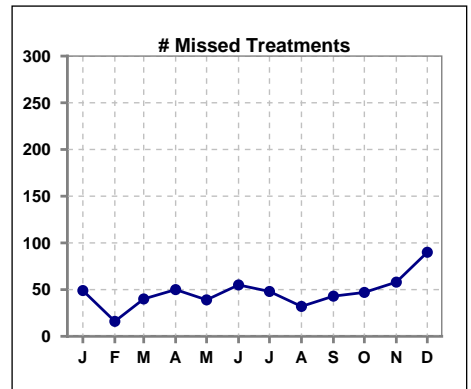
	Jan	Feb	Mar	Apr	May	Jun	Jul	Aug	Sep	Oct	Nov	Dec
# Patient	39	37	46	47	50	48	49	47	50	47	46	49
# Hospital Admissions	7	1	7	9	4	4	5	2	4	7	8	7



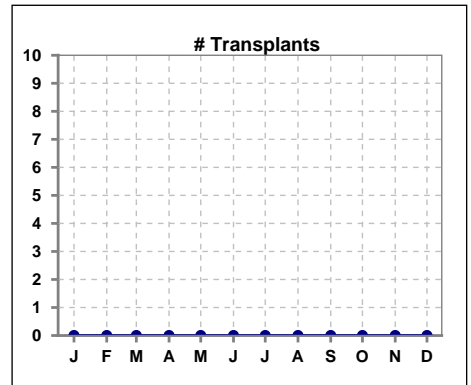
	Jan	Feb	Mar	Apr	May	Jun	Jul	Aug	Sep	Oct	Nov	Dec
# Patient	39	37	46	47	50	48	49	47	50	47	46	49
# Individual Deaths	0	0	0	0	0	0	1	0	0	1	0	0



	Jan	Feb	Mar	Apr	May	Jun	Jul	Aug	Sep	Oct	Nov	Dec
# Patient	39	37	46	47	50	48	49	47	50	47	46	49
# Missed Treatments	49	16	40	50	39	55	48	32	43	47	58	90



	Jan	Feb	Mar	Apr	May	Jun	Jul	Aug	Sep	Oct	Nov	Dec
# Patient	39	37	46	47	50	48	49	47	50	47	46	49
# Transplants	0	0	0	0	0	0	0	0	0	0	0	0



Methodology: a) All labs for 'Adequacy of Dialysis', 'Nutrition', 'Osteodystrophy', 'Anemia' and 'Diabetes' based on last value of month; b) BP's and #L processed are average of all values for month; c) Access data takes last access of month; d) Values for SGA and 'Infection Control' use most recent result.