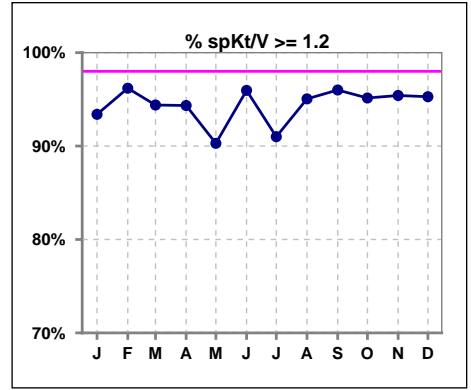
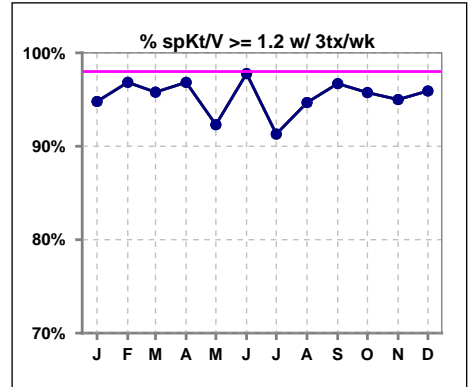


**I. ADEQUACY OF DIALYSIS**

	Jan	Feb	Mar	Apr	May	Jun	Jul	Aug	Sep	Oct	Nov	Dec
# spKt/V	106	105	107	106	103	99	100	101	100	103	109	106
# spKt/V >= 1.2	99	101	101	100	93	95	91	96	96	98	104	101
Pop. Mean	1.60	1.61	1.60	1.58	1.58	1.59	1.59	1.57	1.68	1.68	1.67	1.68
Std. Deviation	0.31	0.29	0.32	0.30	0.34	0.29	0.32	0.34	0.32	0.34	0.36	0.38
% spKt/V >= 1.2	93%	96%	94%	94%	90%	96%	91%	95%	96%	95%	95%	95%

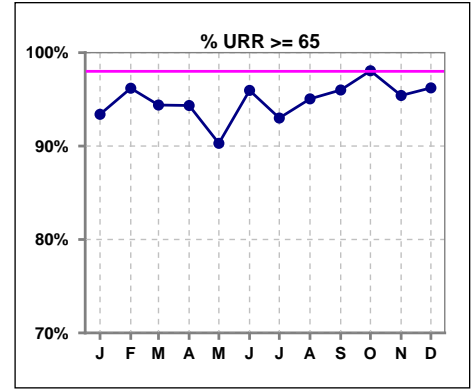


	Jan	Feb	Mar	Apr	May	Jun	Jul	Aug	Sep	Oct	Nov	Dec
# spKt/V w/ 3tx/wk	96	95	95	95	91	90	92	94	91	94	100	98
# spKt/V >= 1.2 w/3tx/wk	91	92	91	92	84	88	84	89	88	90	95	94
Pop. Mean	1.60	1.62	1.62	1.58	1.60	1.61	1.59	1.58	1.68	1.69	1.67	1.69
Std. Deviation	0.31	0.28	0.31	0.30	0.33	0.29	0.33	0.31	0.32	0.33	0.37	0.38
% >= 1.2 w/3tx/wk	95%	97%	96%	97%	92%	98%	91%	95%	97%	96%	95%	96%

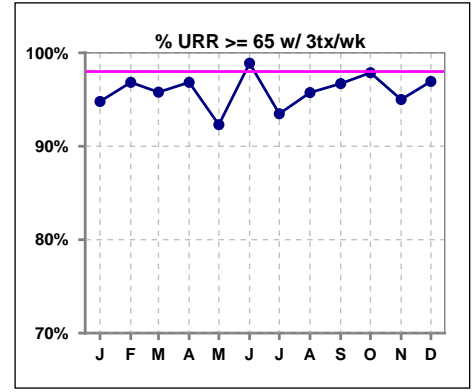


**I. ADEQUACY OF DIALYSIS - CONT.**

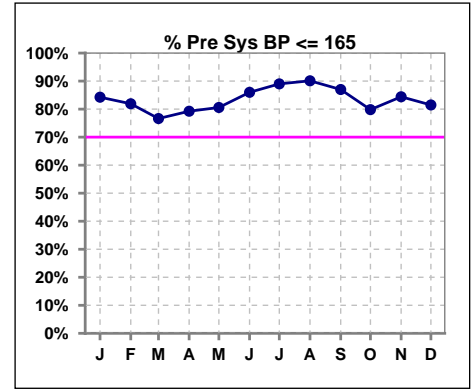
	Jan	Feb	Mar	Apr	May	Jun	Jul	Aug	Sep	Oct	Nov	Dec
# URR	106	105	107	106	103	99	100	101	100	103	109	106
# URR >= 65	99	101	101	100	93	95	93	96	96	101	104	102
Pop. Mean	74	75	74	74	74	74	74	73	76	76	76	76
Std. Deviation	6.71	6.13	6.68	6.54	7.43	6.17	7.67	8.68	6.16	6.00	6.68	7.60
% URR >= 65	93%	96%	94%	94%	90%	96%	93%	95%	96%	98%	95%	96%



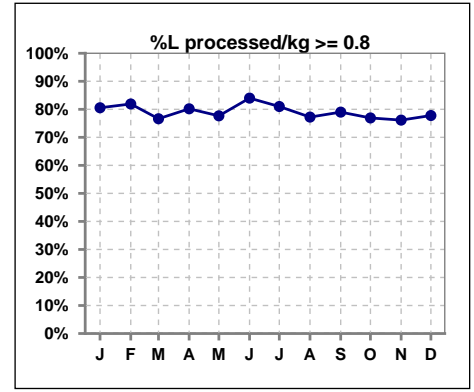
	Jan	Feb	Mar	Apr	May	Jun	Jul	Aug	Sep	Oct	Nov	Dec
# URR w/ 3tx/wk	96	95	95	95	91	90	92	94	91	94	100	98
# URR>=65 w/ 3tx/wk	91	92	91	92	84	89	86	90	88	92	95	95
Pop. Mean	74	75	75	74	74	74	74	74	76	76	75	76
Std. Deviation	6.49	5.69	6.15	6.24	6.81	5.80	7.86	6.33	6.15	6.10	6.82	7.35
% URR>=65 w/ 3tx/wk	95%	97%	96%	97%	92%	99%	93%	96%	97%	98%	95%	97%



	Jan	Feb	Mar	Apr	May	Jun	Jul	Aug	Sep	Oct	Nov	Dec
# Pre Sys BP	108	105	107	106	103	100	100	101	100	104	109	108
# Pre Sys BP <= 165	91	86	82	85	84	86	89	92	90	83	94	90
Pop. Mean	148	150	149	148	146	145	145	144	146	147	146	148
Std. Deviation	18.4	18.5	19.9	19.3	19.7	18.8	18.2	19.1	17.6	20.5	20.6	22.0
% Pre Sys BP <=165	84%	82%	77%	79%	81%	86%	89%	90%	87%	80%	84%	81%



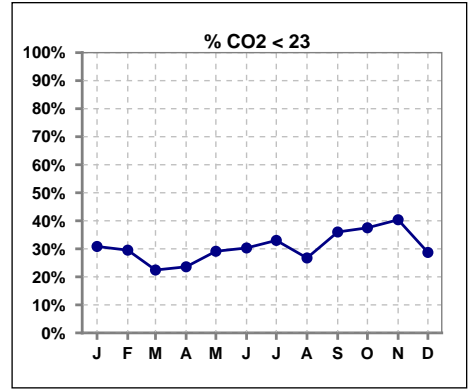
	Jan	Feb	Mar	Apr	May	Jun	Jul	Aug	Sep	Oct	Nov	Dec
# L processed/kg	108	105	107	106	103	100	100	101	100	104	109	108
# L processed/kg>=0.8	87	86	82	85	80	84	81	78	79	80	83	84
Pop. Mean	1	1	1	1	1	1	1	1	1	1	1	1
Std. Deviation	0.3	0.2	0.3	0.3	0.3	0.3	0.2	0.2	0.2	0.2	0.2	0.2
% L processed/kg>=0.8	81%	82%	77%	80%	78%	84%	81%	77%	79%	77%	76%	78%



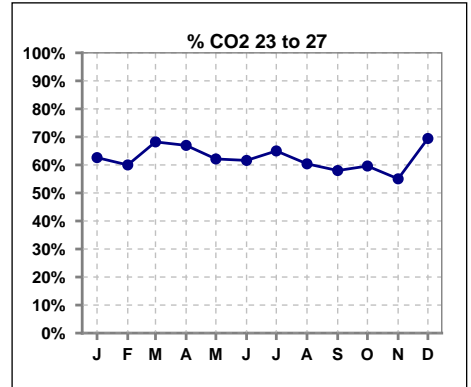
Methodology: a) All labs for 'Adequacy of Dialysis', 'Nutrition', 'Osteodystrophy', 'Anemia' and 'Diabetes' based on last value of month; b) BP's and #L processed are average of all values for month; c) Access data takes last access of month; d) Values for SGA and 'Infection Control' use most recent result.

**I. ADEQUACY OF DIALYSIS - CONT.**

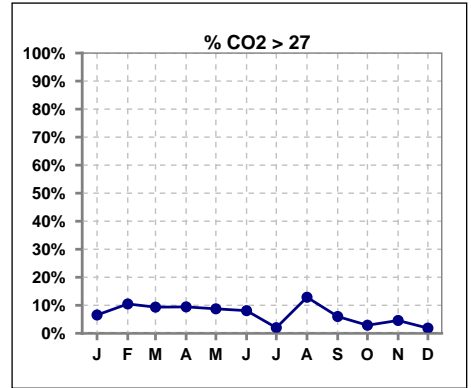
	Jan	Feb	Mar	Apr	May	Jun	Jul	Aug	Sep	Oct	Nov	Dec
# CO2	107	105	107	106	103	99	100	101	100	104	109	108
# CO2 < 23	33	31	24	25	30	30	33	27	36	39	44	31
Pop. Mean	24	24	24	24	24	24	23	24	23	23	23	23
Std. Deviation	2.69	2.92	2.68	2.76	2.73	2.59	2.44	3.02	2.66	2.52	2.99	2.21
<b>% CO2 &lt; 23</b>	<b>31%</b>	<b>30%</b>	<b>22%</b>	<b>24%</b>	<b>29%</b>	<b>30%</b>	<b>33%</b>	<b>27%</b>	<b>36%</b>	<b>38%</b>	<b>40%</b>	<b>29%</b>



	Jan	Feb	Mar	Apr	May	Jun	Jul	Aug	Sep	Oct	Nov	Dec
# CO2	107	105	107	106	103	99	100	101	100	104	109	108
# CO2 23 to 27	67	63	73	71	64	61	65	61	58	62	60	75
Pop. Mean	24	24	24	24	24	24	23	24	23	23	23	23
Std. Deviation	2.69	2.92	2.68	2.76	2.73	2.59	2.44	3.02	2.66	2.52	2.99	2.21
<b>% CO2 23 to 27</b>	<b>63%</b>	<b>60%</b>	<b>68%</b>	<b>67%</b>	<b>62%</b>	<b>62%</b>	<b>65%</b>	<b>60%</b>	<b>58%</b>	<b>60%</b>	<b>55%</b>	<b>69%</b>



	Jan	Feb	Mar	Apr	May	Jun	Jul	Aug	Sep	Oct	Nov	Dec
# CO2	107	105	107	106	103	99	100	101	100	104	109	108
# CO2 > 27	7	11	10	10	9	8	2	13	6	3	5	2
Pop. Mean	24	24	24	24	24	24	23	24	23	23	23	23
Std. Deviation	2.69	2.92	2.68	2.76	2.73	2.59	2.44	3.02	2.66	2.52	2.99	2.21
<b>% CO2 &gt; 27</b>	<b>7%</b>	<b>10%</b>	<b>9%</b>	<b>9%</b>	<b>9%</b>	<b>8%</b>	<b>2%</b>	<b>13%</b>	<b>6%</b>	<b>3%</b>	<b>5%</b>	<b>2%</b>

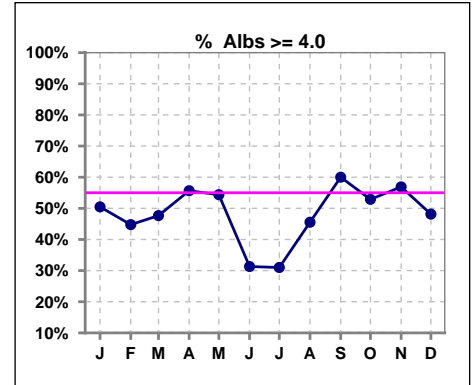


Methodology: a) All labs for 'Adequacy of Dialysis', 'Nutrition', 'Osteodystrophy', 'Anemia' and 'Diabetes' based on last value of month; b) BP's and #L processed are average of all values for month; c) Access data takes last access of month; d) Values for SGA and 'Infection Control' use most recent result.

\*Albumin values use BCG method - as of July 2001

**II. NUTRITION**

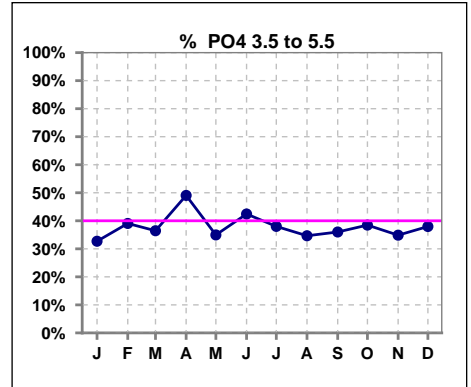
	Jan	Feb	Mar	Apr	May	Jun	Jul	Aug	Sep	Oct	Nov	Dec
# Albumin	107	105	107	106	103	99	100	101	100	104	109	108
# Albumin >= 4.0	54	47	51	59	56	31	31	46	60	55	62	52
Pop. Mean	3.9	3.9	3.9	3.9	3.9	3.8	3.8	3.9	4.0	4.0	3.9	3.9
Std. Deviation	0.38	0.38	0.34	0.40	0.36	0.32	0.32	0.35	0.30	0.35	0.36	0.38
% Alb >= 4.0	50%	45%	48%	56%	54%	31%	31%	46%	60%	53%	57%	48%



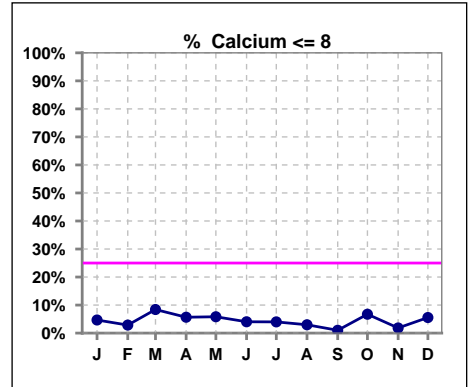
Lab methodology for PTH changed January 2012

**III. OSTEODYSTROPHY**

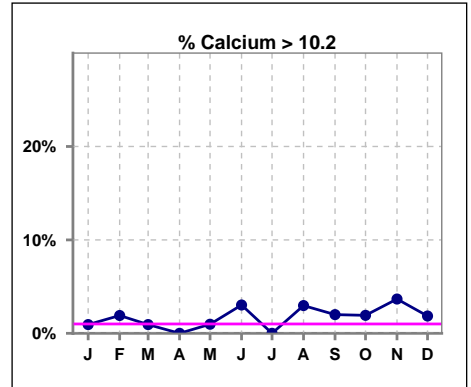
	Jan	Feb	Mar	Apr	May	Jun	Jul	Aug	Sep	Oct	Nov	Dec
# PO4	107	105	107	106	103	99	100	101	100	104	109	108
# PO4 3.5 to 5.5	35	41	39	52	36	42	38	35	36	40	38	41
Pop. Mean	6.1	6.0	6.1	6.0	6.2	6.1	5.9	6.2	6.3	6.1	6.0	6.0
Std. Deviation	1.73	2.04	1.98	1.88	2.11	1.98	2.08	2.09	2.55	2.21	1.86	1.92
% PO4 3.5 to 5.5	33%	39%	36%	49%	35%	42%	38%	35%	36%	38%	35%	38%



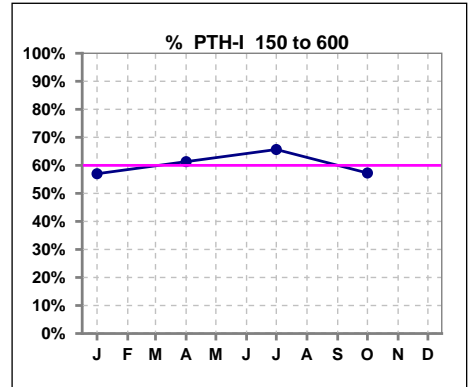
	Jan	Feb	Mar	Apr	May	Jun	Jul	Aug	Sep	Oct	Nov	Dec
# Calcium	107	105	107	106	103	99	100	101	100	104	109	108
# Calcium <= 8	5	3	9	6	6	4	4	3	1	7	2	6
Pop. Mean	9.2	9.2	9.2	9.2	9.1	9.3	9.1	9.2	9.3	9.1	9.2	9.1
Std. Deviation	0.82	0.60	0.67	0.64	0.71	0.70	0.62	0.66	0.59	0.61	0.63	0.65
% Calcium <= 8	5%	3%	8%	6%	6%	4%	4%	3%	1%	7%	2%	6%



	Jan	Feb	Mar	Apr	May	Jun	Jul	Aug	Sep	Oct	Nov	Dec
# Calcium	107	105	107	106	103	99	100	101	100	104	109	108
# Calcium > 10.2	1	2	1	0	1	3	0	3	2	2	4	2
Pop. Mean	9.2	9.2	9.2	9.2	9.1	9.3	9.1	9.2	9.3	9.1	9.2	9.1
Std. Deviation	0.82	0.60	0.67	0.64	0.71	0.70	0.62	0.66	0.59	0.61	0.63	0.65
% Calcium > 10.2	1%	2%	1%	0%	1%	3%	0%	3%	2%	2%	4%	2%



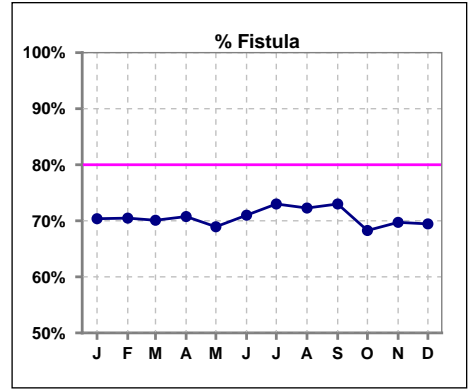
	Jan	Feb	Mar	Apr	May	Jun	Jul	Aug	Sep	Oct	Nov	Dec
# PTH-I	107			106			99			103		
# PTH-I 150 to 600	61			65			65			59		
Pop. Mean	555			508			431			468		
Std. Deviation	512			469			358			371		
% PTH-I 150 to 600	57%			61%			66%			57%		



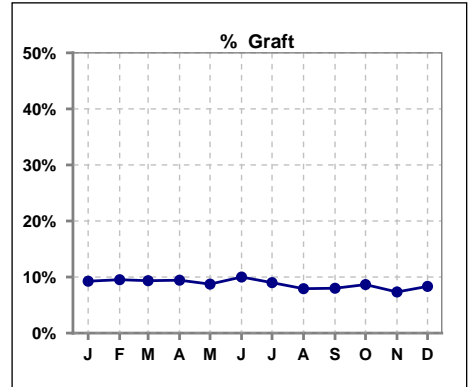
Methodology: a) All labs for 'Adequacy of Dialysis', 'Nutrition', 'Osteodystrophy', 'Anemia' and 'Diabetes' based on last value of month; b) BP's and #L processed are average of all values for month; c) Access data takes last access of month; d) Values for SGA and 'Infection Control' use most recent result.

**IV. ACCESS**

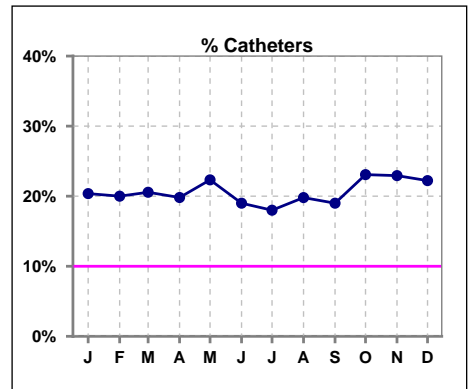
	Jan	Feb	Mar	Apr	May	Jun	Jul	Aug	Sep	Oct	Nov	Dec
<b># Access</b>	108	105	107	106	103	100	100	101	100	104	109	108
<b># Fistula</b>	76	74	75	75	71	71	73	73	73	71	76	75
<b>% Fistula</b>	70%	70%	70%	71%	69%	71%	73%	72%	73%	68%	70%	69%



	Jan	Feb	Mar	Apr	May	Jun	Jul	Aug	Sep	Oct	Nov	Dec
<b># Access</b>	108	105	107	106	103	100	100	101	100	104	109	108
<b># Graft</b>	10	10	10	10	9	10	9	8	8	9	8	9
<b>% Graft</b>	9%	10%	9%	9%	9%	10%	9%	8%	8%	9%	7%	8%



	Jan	Feb	Mar	Apr	May	Jun	Jul	Aug	Sep	Oct	Nov	Dec
<b># Access</b>	108	105	107	106	103	100	100	101	100	104	109	108
<b># Catheters</b>	22	21	22	21	23	19	18	20	19	24	25	24
<b>% Catheters</b>	20%	20%	21%	20%	22%	19%	18%	20%	19%	23%	23%	22%



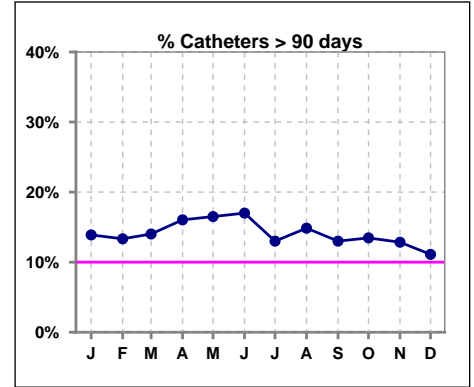
Methodology: a) All labs for 'Adequacy of Dialysis', 'Nutrition', 'Osteodystrophy', 'Anemia' and 'Diabetes' based on last value of month; b) BP's and #L processed are average of all values for month; c) Access data takes last access of month; d) Values for SGA and 'Infection Control' use most recent result.

**IV. ACCESS - CONT.**

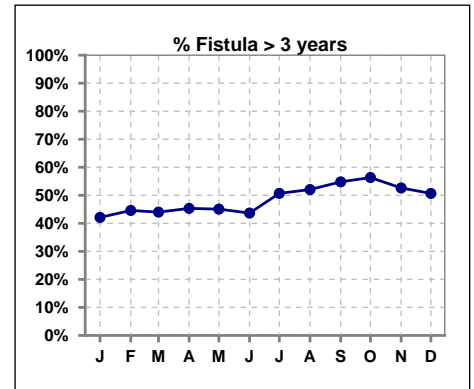
**Catheters > 90 days**

	Jan	Feb	Mar	Apr	May	Jun	Jul	Aug	Sep	Oct	Nov	Dec
<b># Access</b>	108	105	107	106	103	100	100	101	100	104	109	108
<b># Catheters</b>	15	14	15	17	17	17	13	15	13	14	14	12
<b>% Catheters</b>	14%	13%	14%	16%	17%	17%	13%	15%	13%	13%	13%	11%

**Definition:** Catheter in use on last treatment of the month



	Jan	Feb	Mar	Apr	May	Jun	Jul	Aug	Sep	Oct	Nov	Dec
<b># Fistula</b>	76	74	75	75	71	71	73	73	73	71	76	75
<b># Fistula &gt; 3 yrs</b>	32	33	33	34	32	31	37	38	40	40	40	38
<b>% Fistula &gt; 3 yrs</b>	42%	45%	44%	45%	45%	44%	51%	52%	55%	56%	53%	51%

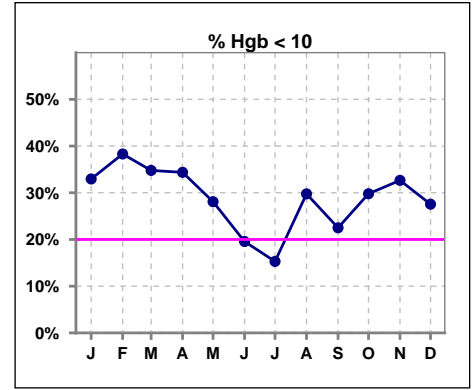


**Methodology:** a) All labs for 'Adequacy of Dialysis', 'Nutrition', 'Osteodystrophy', 'Anemia' and 'Diabetes' based on last value of month; b) BP's and #L processed are average of all values for month; c) Access data takes last access of month; d) Values for SGA and 'Infection Control' use most recent result.

**V. ANEMIA**

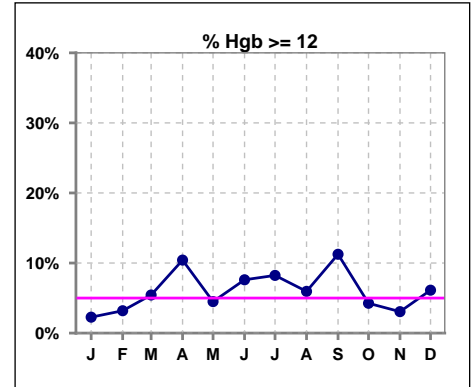
	Jan	Feb	Mar	Apr	May	Jun	Jul	Aug	Sep	Oct	Nov	Dec
# Hgb	88	94	92	96	89	92	85	84	80	94	98	98
# Hgb < 10	29	36	32	33	25	18	13	25	18	28	32	27
Pop. Mean	10.3	10.3	10.4	10.4	10.5	10.6	10.8	10.4	10.6	10.4	10.3	10.4
Std. Deviation	1.1	1.2	1.1	1.3	1.2	1.2	1.1	1.2	1.3	1.3	1.2	1.2
% Hgb < 10	33%	38%	35%	34%	28%	20%	15%	30%	23%	30%	33%	28%

Note: Excludes patients who received no ESA in month.



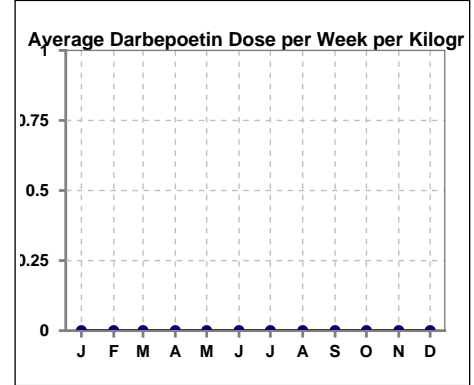
	Jan	Feb	Mar	Apr	May	Jun	Jul	Aug	Sep	Oct	Nov	Dec
# Hgb	88	94	92	96	89	92	85	84	80	94	98	98
# Hgb >= 12	2	3	5	10	4	7	7	5	9	4	3	6
Pop. Mean	10.3	10.3	10.4	10.4	10.5	10.6	10.8	10.4	10.6	10.4	10.3	10.4
Std. Deviation	1.1	1.2	1.1	1.3	1.2	1.2	1.1	1.2	1.3	1.3	1.2	1.2
% Hgb >= 12	2%	3%	5%	10%	4%	8%	8%	6%	11%	4%	3%	6%

Note: Excludes patients who received no ESA in month.



**Average Darbepoetin Dose per Week per Kilogram**

	Jan	Feb	Mar	Apr	May	Jun	Jul	Aug	Sep	Oct	Nov	Dec
# Average Darbepoetin	0	0	0	0	0	0	0	0	0	0	0	0



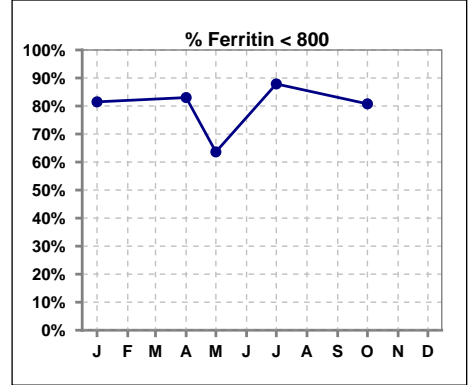
Methodology: a) All labs for 'Adequacy of Dialysis', 'Nutrition', 'Osteodystrophy', 'Anemia' and 'Diabetes' based on last value of month; b) BP's and #L processed are average of all values for month; c) Access data takes last access of month; d) Values for SGA and 'Infection Control' use most recent result.



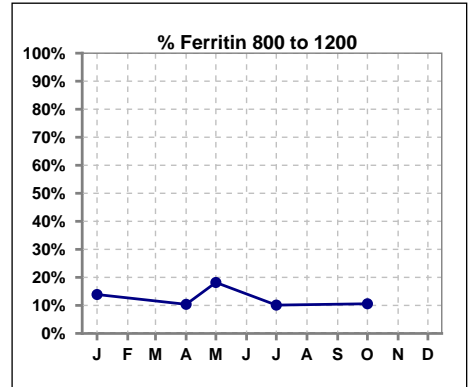
**V. ANEMIA - CONT.**

**Iron Profile**

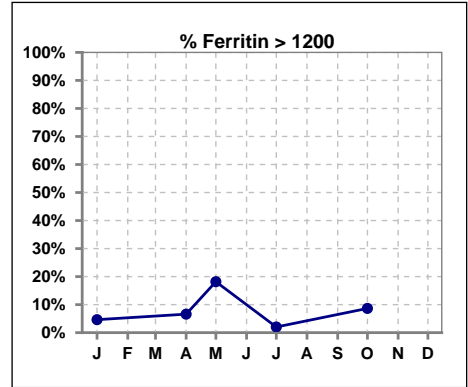
	Jan	Feb	Mar	Apr	May	Jun	Jul	Aug	Sep	Oct	Nov	Dec
# Ferritin	108			106	11		99			104		
# Ferritin < 800	88			88	7		87			84		
Pop. Mean	480			457	694		426			532		
Std. Deviation	356			343	518		301			471		
<b>% Ferritin &lt; 800</b>	<b>81%</b>			<b>83%</b>	<b>64%</b>		<b>88%</b>			<b>81%</b>		



	Jan	Feb	Mar	Apr	May	Jun	Jul	Aug	Sep	Oct	Nov	Dec
# Ferritin	108			106	11		99			104		
# Ferritin 800 to 1200	15			11	2		10			11		
Pop. Mean	480			457	694		426			532		
Std. Deviation	356			343	518		301			471		
<b>% Ferritin 800 to 1200</b>	<b>14%</b>			<b>10%</b>	<b>18%</b>		<b>10%</b>			<b>11%</b>		



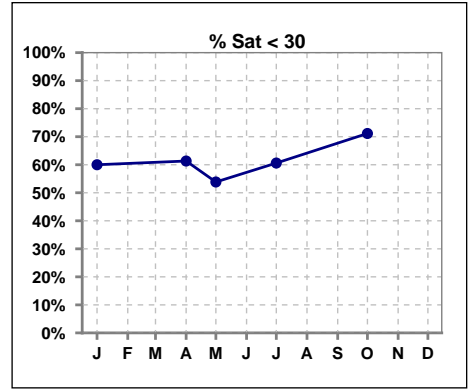
	Jan	Feb	Mar	Apr	May	Jun	Jul	Aug	Sep	Oct	Nov	Dec
# Ferritin	108			106	11		99			104		
# Ferritin > 1200	5			7	2		2			9		
Pop. Mean	480			457	694		426			532		
Std. Deviation	356			343	518		301			471		
<b>% Ferritin &gt; 1200</b>	<b>5%</b>			<b>7%</b>	<b>18%</b>		<b>2%</b>			<b>9%</b>		



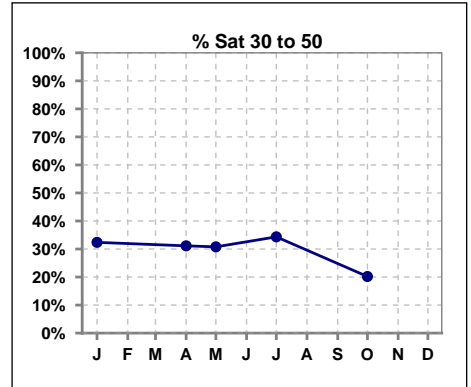
Methodology: a) All labs for 'Adequacy of Dialysis', 'Nutrition', 'Osteodystrophy', 'Anemia' and 'Diabetes' based on last value of month; b) BP's and #L processed are average of all values for month; c) Access data takes last access of month; d) Values for SGA and 'Infection Control' use most recent result.

**V. ANEMIA - CONT.**

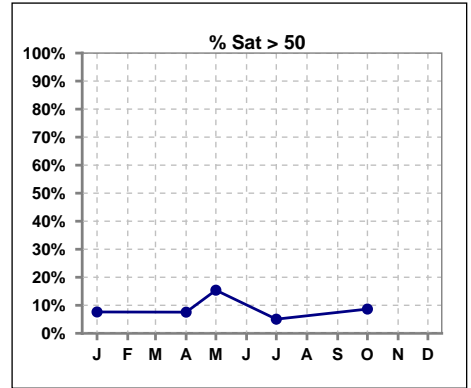
	Jan	Feb	Mar	Apr	May	Jun	Jul	Aug	Sep	Oct	Nov	Dec
# % Sat	105			106	13		99			104		
# % Sat < 30	63			65	7		60			74		
Pop. Mean	29			29	34		28			28		
Std. Deviation	15			16	27		15			19		
<b>% % Sat &lt; 30</b>	<b>60%</b>			<b>61%</b>	<b>54%</b>		<b>61%</b>			<b>71%</b>		



	Jan	Feb	Mar	Apr	May	Jun	Jul	Aug	Sep	Oct	Nov	Dec
# % Sat	105			106	13		99			104		
# % Sat 30 to 50	34			33	4		34			21		
Pop. Mean	29			29	34		28			28		
Std. Deviation	15			16	27		15			19		
<b>% % Sat 30 to 50</b>	<b>32%</b>			<b>31%</b>	<b>31%</b>		<b>34%</b>			<b>20%</b>		



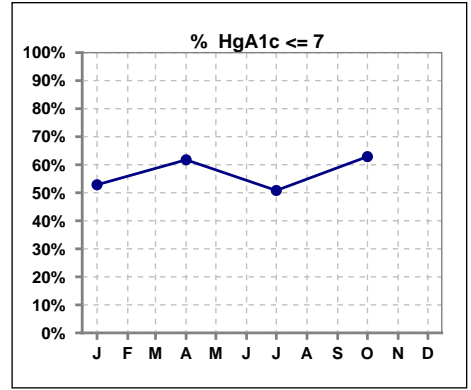
	Jan	Feb	Mar	Apr	May	Jun	Jul	Aug	Sep	Oct	Nov	Dec
# % Sat	105			106	13		99			104		
# % Sat > 50	8			8	2		5			9		
Pop. Mean	29			29	34		28			28		
Std. Deviation	15			16	27		15			19		
<b>% % Sat &gt; 50</b>	<b>8%</b>			<b>8%</b>	<b>15%</b>		<b>5%</b>			<b>9%</b>		



Methodology: a) All labs for 'Adequacy of Dialysis', 'Nutrition', 'Osteodystrophy', 'Anemia' and 'Diabetes' based on last value of month; b) BP's and #L processed are average of all values for month; c) Access data takes last access of month; d) Values for SGA and 'Infection Control' use most recent result.

**VI. Diabetes**

	Jan	Feb	Mar	Apr	May	Jun	Jul	Aug	Sep	Oct	Nov	Dec
# HgA1c	70			68			61			62		
# HgA1c <= 7	37			42			31			39		
Pop. Mean	7.0			6.9			7.1			6.7		
Std. Deviation	1.57			1.68			1.69			1.63		
<b>% HgA1c &lt;= 7</b>	<b>53%</b>			<b>62%</b>			<b>51%</b>			<b>63%</b>		

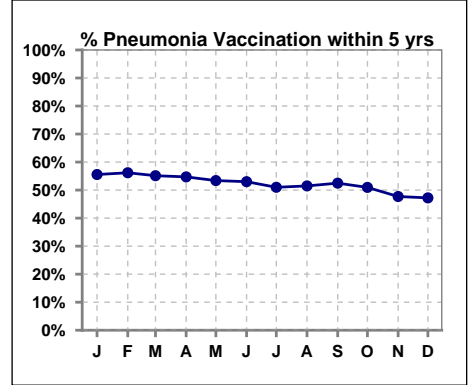


Methodology: a) All labs for 'Adequacy of Dialysis', 'Nutrition', 'Osteodystrophy', 'Anemia' and 'Diabetes' based on last value of month; b) BP's and #L processed are average of all values for month; c) Access data takes last access of month; d) Values for SGA and 'Infection Control' use most recent result.

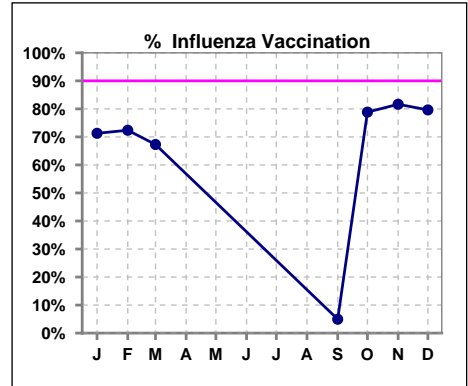
**VII. Infection Control**

**Pneumonia vaccination within the past five years**

	Jan	Feb	Mar	Apr	May	Jun	Jul	Aug	Sep	Oct	Nov	Dec
<b># Patient</b>	108	105	107	106	103	100	100	101	101	104	109	108
<b># Pneumonia</b>	60	59	59	58	55	53	51	52	53	53	52	51
<b>% Pneumonia</b>	56%	56%	55%	55%	53%	53%	51%	51%	52%	51%	48%	47%



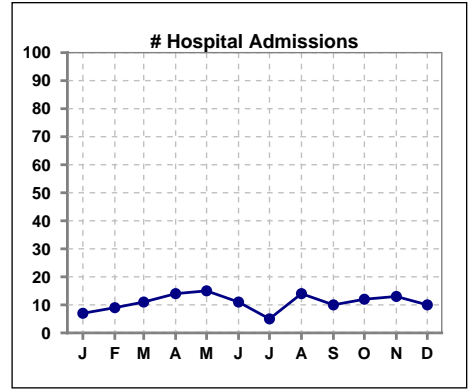
	Jan	Feb	Mar	Apr	May	Jun	Jul	Aug	Sep	Oct	Nov	Dec
<b># Patient</b>	108	105	107						101	104	109	108
<b># Influenza</b>	77	76	72						5	82	89	86
<b>% Influenza</b>	71%	72%	67%						5%	79%	82%	80%



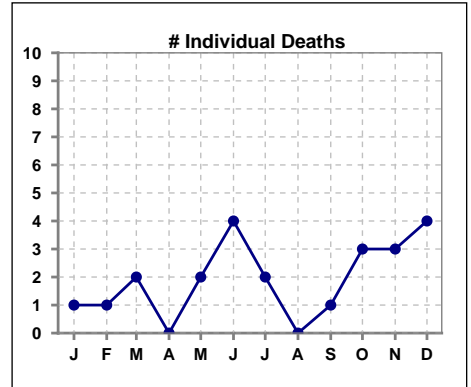
Methodology: a) All labs for 'Adequacy of Dialysis', 'Nutrition', 'Osteodystrophy', 'Anemia' and 'Diabetes' based on last value of month; b) BP's and #L processed are average of all values for month; c) Access data takes last access of month; d) Values for SGA and 'Infection Control' use most recent result.

**VIII. Outcome measures**

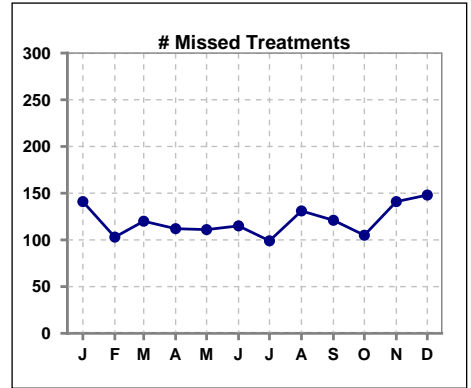
	Jan	Feb	Mar	Apr	May	Jun	Jul	Aug	Sep	Oct	Nov	Dec
<b># Patient</b>	108	105	107	106	103	100	100	101	101	104	109	108
<b># Hospital Admissions</b>	7	9	11	14	15	11	5	14	10	12	13	10



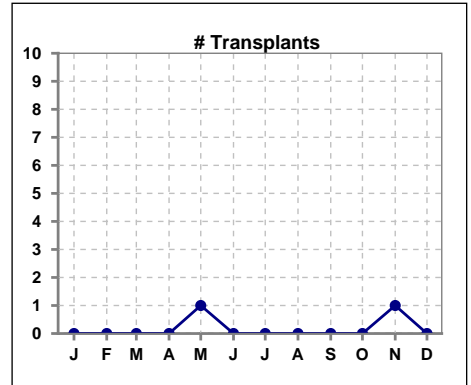
	Jan	Feb	Mar	Apr	May	Jun	Jul	Aug	Sep	Oct	Nov	Dec
<b># Patient</b>	108	105	107	106	103	100	100	101	101	104	109	108
<b># Individual Deaths</b>	1	1	2	0	2	4	2	0	1	3	3	4



	Jan	Feb	Mar	Apr	May	Jun	Jul	Aug	Sep	Oct	Nov	Dec
<b># Patient</b>	108	105	107	106	103	100	100	101	101	104	109	108
<b># Missed Treatments</b>	141	103	120	112	111	115	99	131	121	105	141	148



	Jan	Feb	Mar	Apr	May	Jun	Jul	Aug	Sep	Oct	Nov	Dec
<b># Patient</b>	108	105	107	106	103	100	100	101	101	104	109	108
<b># Transplants</b>	0	0	0	0	1	0	0	0	0	0	1	0



Methodology: a) All labs for 'Adequacy of Dialysis', 'Nutrition', 'Osteodystrophy', 'Anemia' and 'Diabetes' based on last value of month; b) BP's and #L processed are average of all values for month; c) Access data takes last access of month; d) Values for SGA and 'Infection Control' use most recent result.