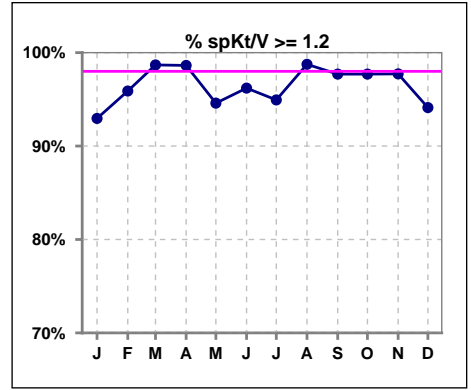
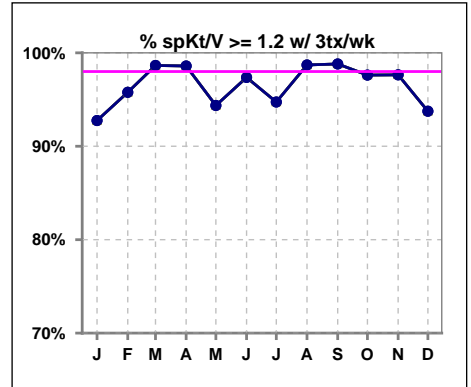


I. ADEQUACY OF DIALYSIS

	Jan	Feb	Mar	Apr	May	Jun	Jul	Aug	Sep	Oct	Nov	Dec
# spKt/V	71	73	76	73	74	79	79	80	87	87	88	85
# spKt/V >= 1.2	66	70	75	72	70	76	75	79	85	85	86	80
Pop. Mean	1.61	1.59	1.57	1.61	1.58	1.54	1.55	1.61	1.61	1.66	1.66	1.62
Std. Deviation	0.31	0.31	0.26	0.27	0.31	0.26	0.30	0.27	0.30	0.29	0.31	0.34
% spKt/V >= 1.2	93%	96%	99%	99%	95%	96%	95%	99%	98%	98%	98%	94%



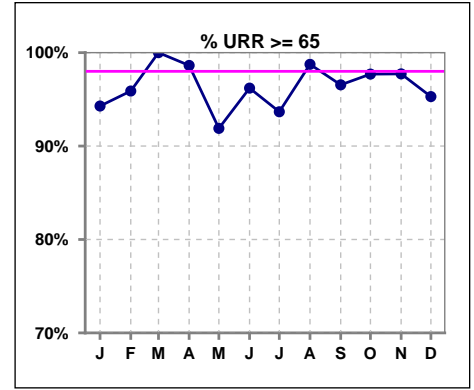
	Jan	Feb	Mar	Apr	May	Jun	Jul	Aug	Sep	Oct	Nov	Dec
# spKt/V w/ 3tx/wk	69	71	74	71	71	76	76	77	84	84	85	80
# spKt/V >= 1.2 w/3tx/wk	64	68	73	70	67	74	72	76	83	82	83	75
Pop. Mean	1.61	1.58	1.56	1.61	1.59	1.55	1.55	1.61	1.62	1.67	1.67	1.63
Std. Deviation	0.31	0.31	0.27	0.28	0.31	0.26	0.30	0.27	0.28	0.29	0.30	0.34
% >= 1.2 w/3tx/wk	93%	96%	99%	99%	94%	97%	95%	99%	99%	98%	98%	94%



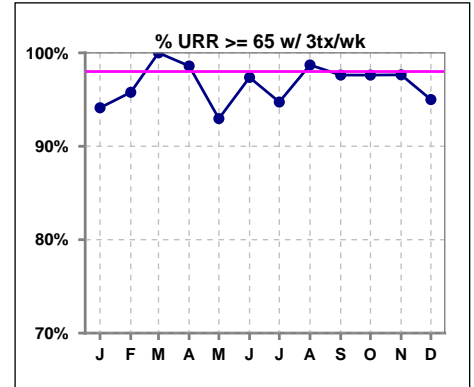
Methodology: a) All labs for 'Adequacy of Dialysis', 'Nutrition', 'Osteodystrophy', 'Anemia' and 'Diabetes' based on last value of month; b) BP's and #L processed are average of all values for month; c) Access data takes last access of month; d) Values for SGA and 'Infection Control' use most recent result.

I. ADEQUACY OF DIALYSIS - CONT.

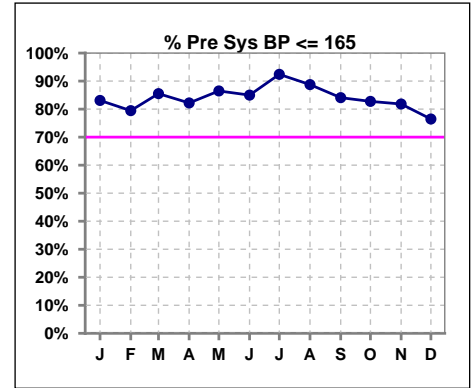
	Jan	Feb	Mar	Apr	May	Jun	Jul	Aug	Sep	Oct	Nov	Dec
# URR	70	73	76	73	74	79	79	80	87	87	88	85
# URR >= 65	66	70	76	72	68	76	74	79	84	85	86	81
Pop. Mean	75	74	74	75	74	73	73	75	74	76	76	75
Std. Deviation	6.40	6.20	5.01	5.47	6.36	5.50	6.63	5.28	6.84	5.80	5.86	6.88
% URR >= 65	94%	96%	100%	99%	92%	96%	94%	99%	97%	98%	98%	95%



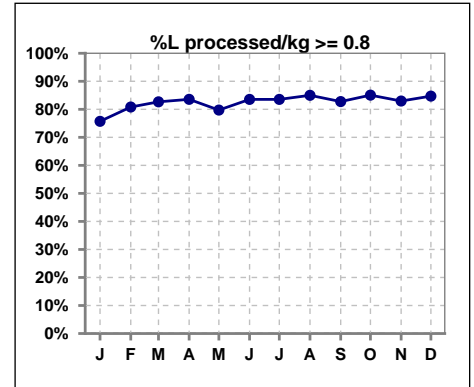
	Jan	Feb	Mar	Apr	May	Jun	Jul	Aug	Sep	Oct	Nov	Dec
# URR w/ 3tx/wk	68	71	74	71	71	76	76	77	84	84	85	80
# URR>=65 w/ 3tx/wk	64	68	74	70	66	74	72	76	82	82	83	76
Pop. Mean	75	74	74	75	74	74	73	75	75	76	76	75
Std. Deviation	6.38	6.20	5.04	5.47	6.33	5.38	6.60	5.30	5.99	5.70	5.82	6.87
% URR>=65 w/ 3tx/wk	94%	96%	100%	99%	93%	97%	95%	99%	98%	98%	98%	95%



	Jan	Feb	Mar	Apr	May	Jun	Jul	Aug	Sep	Oct	Nov	Dec
# Pre Sys BP	71	73	76	73	74	80	79	80	88	87	88	85
# Pre Sys BP <= 165	60	58	66	60	65	68	73	72	76	74	75	66
Pop. Mean	146	147	144	144	146	145	143	143	146	148	148	148
Std. Deviation	20.1	19.2	17.9	18.6	19.6	19.8	18.2	17.8	18.1	18.1	18.7	18.9
%Pre Sys BP <=165	83%	79%	86%	82%	86%	85%	92%	89%	84%	83%	82%	76%



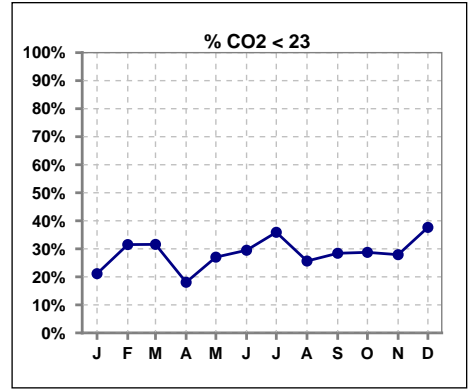
	Jan	Feb	Mar	Apr	May	Jun	Jul	Aug	Sep	Oct	Nov	Dec
# L processed/kg	70	73	75	73	74	79	79	80	87	87	88	85
# L processed/kg>=0.8	53	59	62	61	59	66	66	68	72	74	73	72
Pop. Mean	1	1	1	1	1	1	1	1	1	1	1	1
Std. Deviation	0.3	0.3	0.3	0.3	0.3	0.3	0.3	0.3	0.3	0.3	0.3	0.3
% L processed/kg>=0.8	76%	81%	83%	84%	80%	84%	84%	85%	83%	85%	83%	85%



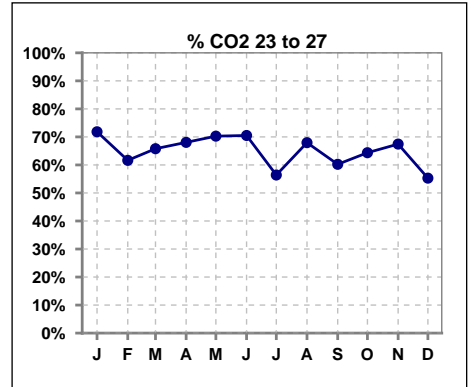
Methodology: a) All labs for 'Adequacy of Dialysis', 'Nutrition', 'Osteodystrophy', 'Anemia' and 'Diabetes' based on last value of month; b) BP's and #L processed are average of all values for month; c) Access data takes last access of month; d) Values for SGA and 'Infection Control' use most recent result.

I. ADEQUACY OF DIALYSIS - CONT.

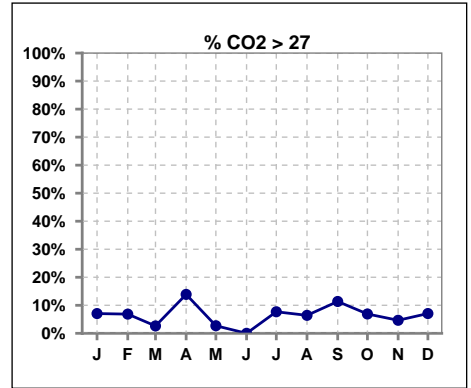
	Jan	Feb	Mar	Apr	May	Jun	Jul	Aug	Sep	Oct	Nov	Dec
# CO2	71	73	76	72	74	78	78	78	88	87	86	85
# CO2 < 23	15	23	24	13	20	23	28	20	25	25	24	32
Pop. Mean	24	23	23	25	24	24	24	24	24	24	24	24
Std. Deviation	3.16	3.52	2.23	2.78	2.47	2.32	3.33	3.06	3.04	2.87	2.38	3.14
% CO2 < 23	21%	32%	32%	18%	27%	29%	36%	26%	28%	29%	28%	38%



	Jan	Feb	Mar	Apr	May	Jun	Jul	Aug	Sep	Oct	Nov	Dec
# CO2	71	73	76	72	74	78	78	78	88	87	86	85
# CO2 23 to 27	51	45	50	49	52	55	44	53	53	56	58	47
Pop. Mean	24	23	23	25	24	24	24	24	24	24	24	24
Std. Deviation	3.16	3.52	2.23	2.78	2.47	2.32	3.33	3.06	3.04	2.87	2.38	3.14
% CO2 23 to 27	72%	62%	66%	68%	70%	71%	56%	68%	60%	64%	67%	55%



	Jan	Feb	Mar	Apr	May	Jun	Jul	Aug	Sep	Oct	Nov	Dec
# CO2	71	73	76	72	74	78	78	78	88	87	86	85
# CO2 > 27	5	5	2	10	2	0	6	5	10	6	4	6
Pop. Mean	24	23	23	25	24	24	24	24	24	24	24	24
Std. Deviation	3.16	3.52	2.23	2.78	2.47	2.32	3.33	3.06	3.04	2.87	2.38	3.14
% CO2 > 27	7%	7%	3%	14%	3%	0%	8%	6%	11%	7%	5%	7%

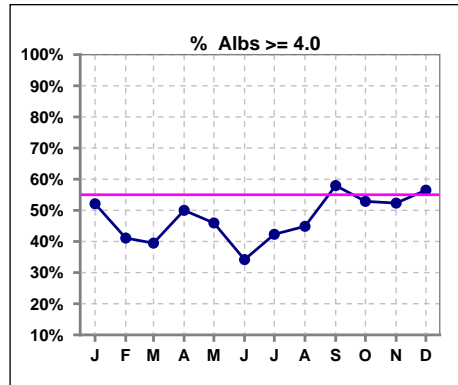


Methodology: a) All labs for 'Adequacy of Dialysis', 'Nutrition', 'Osteodystrophy', 'Anemia' and 'Diabetes' based on last value of month; b) BP's and #L processed are average of all values for month; c) Access data takes last access of month; d) Values for SGA and 'Infection Control' use most recent result.

*Albumin values use BCG method - as of July 2001

II. NUTRITION

	Jan	Feb	Mar	Apr	May	Jun	Jul	Aug	Sep	Oct	Nov	Dec
# Albumin	71	73	76	72	74	79	78	78	88	87	86	85
# Albumin >= 4.0	37	30	30	36	34	27	33	35	51	46	45	48
Pop. Mean	3.9	3.8	3.9	3.9	3.9	3.7	3.7	3.8	3.9	3.9	3.9	3.9
Std. Deviation	0.47	0.45	0.43	0.45	0.46	0.53	0.51	0.55	0.48	0.51	0.49	0.51
% Alb >= 4.0	52%	41%	39%	50%	46%	34%	42%	45%	58%	53%	52%	56%

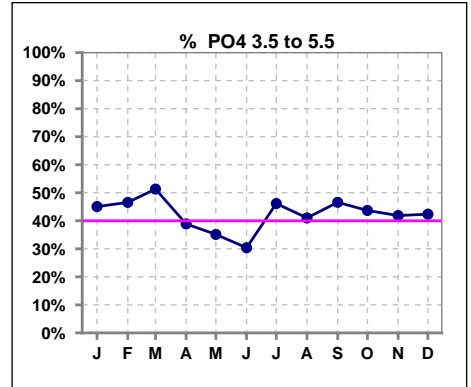


Methodology: a) All labs for 'Adequacy of Dialysis', 'Nutrition', 'Osteodystrophy', 'Anemia' and 'Diabetes' based on last value of month; b) BP's and #L processed are average of all values for month; c) Access data takes last access of month; d) Values for SGA and 'Infection Control' use most recent result.

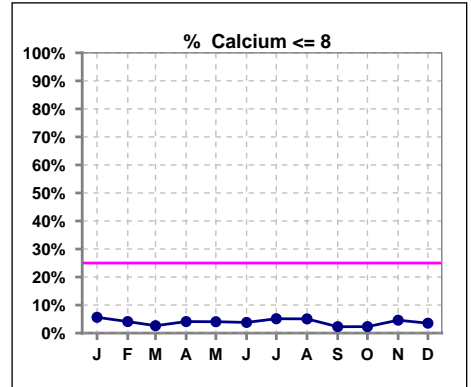
Lab methodology for PTH changed January 2012

III. OSTEODYSTROPHY

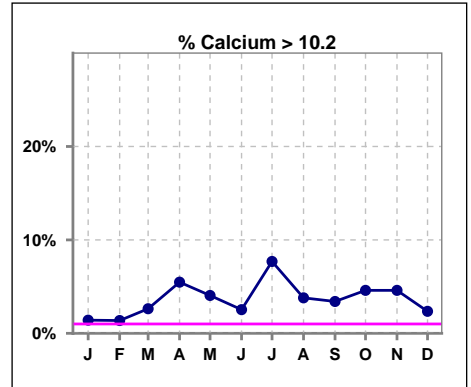
	Jan	Feb	Mar	Apr	May	Jun	Jul	Aug	Sep	Oct	Nov	Dec
# PO4	71	73	76	72	74	79	78	78	88	87	86	85
# PO4 3.5 to 5.5	32	34	39	28	26	24	36	32	41	38	36	36
Pop. Mean	6.1	5.9	5.8	6.0	6.0	6.0	5.7	5.9	6.1	6.1	6.1	5.9
Std. Deviation	2.08	1.83	1.73	1.57	1.83	1.82	1.76	1.64	1.97	2.05	2.13	1.85
% PO4 3.5 to 5.5	45%	47%	51%	39%	35%	30%	46%	41%	47%	44%	42%	42%



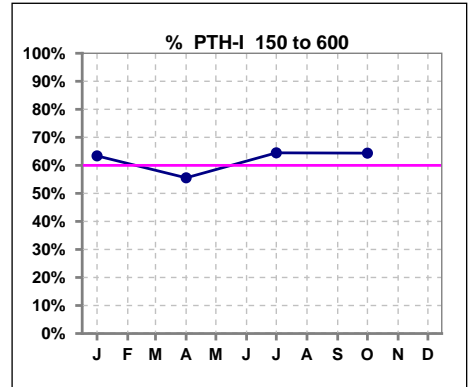
	Jan	Feb	Mar	Apr	May	Jun	Jul	Aug	Sep	Oct	Nov	Dec
# Calcium	71	73	76	73	74	79	78	79	88	87	87	85
# Calcium <= 8	4	3	2	3	3	3	4	4	2	2	4	3
Pop. Mean	9.1	9.3	9.2	9.4	9.2	9.2	9.2	9.2	9.2	9.2	9.2	9.2
Std. Deviation	0.66	0.63	0.83	0.95	0.68	0.63	0.76	0.71	0.69	0.64	0.69	0.64
% Calcium <= 8	6%	4%	3%	4%	4%	4%	5%	5%	2%	2%	5%	4%



	Jan	Feb	Mar	Apr	May	Jun	Jul	Aug	Sep	Oct	Nov	Dec
# Calcium	71	73	76	73	74	79	78	79	88	87	87	85
# Calcium > 10.2	1	1	2	4	3	2	6	3	3	4	4	2
Pop. Mean	9.1	9.3	9.2	9.4	9.2	9.2	9.2	9.2	9.2	9.2	9.2	9.2
Std. Deviation	0.66	0.63	0.83	0.95	0.68	0.63	0.76	0.71	0.69	0.64	0.69	0.64
% Calcium > 10.2	1%	1%	3%	5%	4%	3%	8%	4%	3%	5%	5%	2%



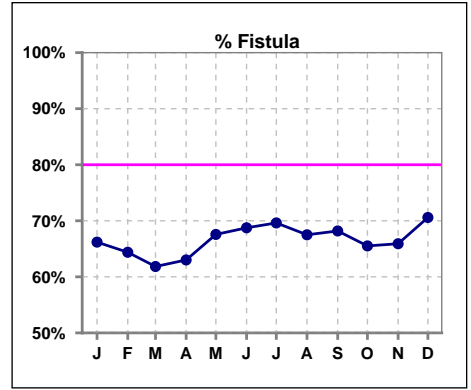
	Jan	Feb	Mar	Apr	May	Jun	Jul	Aug	Sep	Oct	Nov	Dec
# PTH-I	71			72			76			87		
# PTH-I 150 to 600	45			40			49			56		
Pop. Mean	509			541			451			496		
Std. Deviation	716			771			610			648		
% PTH-I 150 to 600	63%			56%			64%			64%		



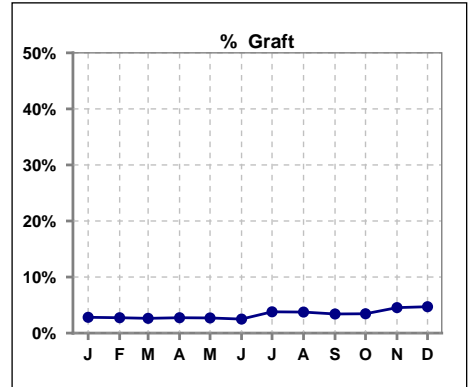
Methodology: a) All labs for 'Adequacy of Dialysis', 'Nutrition', 'Osteodystrophy', 'Anemia' and 'Diabetes' based on last value of month; b) BP's and #L processed are average of all values for month; c) Access data takes last access of month; d) Values for SGA and 'Infection Control' use most recent result.

IV. ACCESS

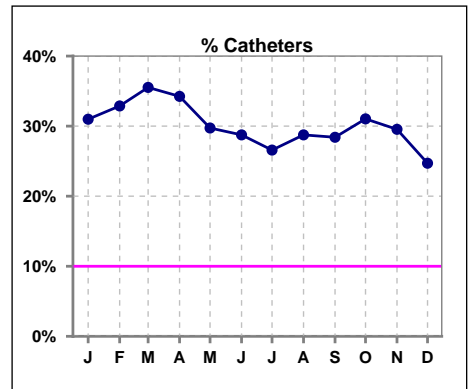
	Jan	Feb	Mar	Apr	May	Jun	Jul	Aug	Sep	Oct	Nov	Dec
# Access	71	73	76	73	74	80	79	80	88	87	88	85
# Fistula	47	47	47	46	50	55	55	54	60	57	58	60
% Fistula	66%	64%	62%	63%	68%	69%	70%	68%	68%	66%	66%	71%



	Jan	Feb	Mar	Apr	May	Jun	Jul	Aug	Sep	Oct	Nov	Dec
# Access	71	73	76	73	74	80	79	80	88	87	88	85
# Graft	2	2	2	2	2	2	3	3	3	3	4	4
% Graft	3%	3%	3%	3%	3%	3%	4%	4%	3%	3%	5%	5%



	Jan	Feb	Mar	Apr	May	Jun	Jul	Aug	Sep	Oct	Nov	Dec
# Access	71	73	76	73	74	80	79	80	88	87	88	85
# Catheters	22	24	27	25	22	23	21	23	25	27	26	21
% Catheters	31%	33%	36%	34%	30%	29%	27%	29%	28%	31%	30%	25%



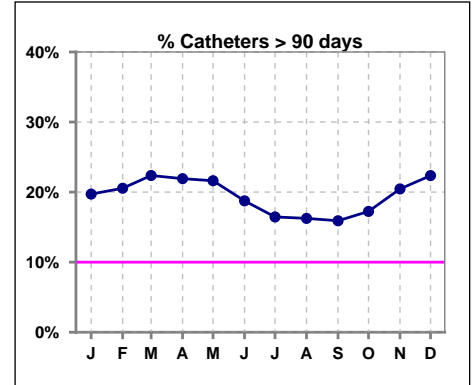
Methodology: a) All labs for 'Adequacy of Dialysis', 'Nutrition', 'Osteodystrophy', 'Anemia' and 'Diabetes' based on last value of month; b) BP's and #L processed are average of all values for month; c) Access data takes last access of month; d) Values for SGA and 'Infection Control' use most recent result.

IV. ACCESS - CONT.

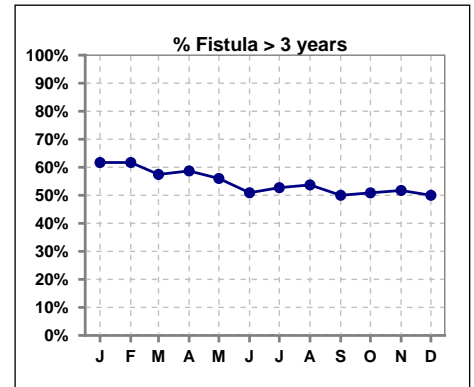
Catheters > 90 days

	Jan	Feb	Mar	Apr	May	Jun	Jul	Aug	Sep	Oct	Nov	Dec
# Access	71	73	76	73	74	80	79	80	88	87	88	85
# Catheters	14	15	17	16	16	15	13	13	14	15	18	19
% Catheters	20%	21%	22%	22%	22%	19%	16%	16%	16%	17%	20%	22%

Definition: Catheter in use on last treatment of the month



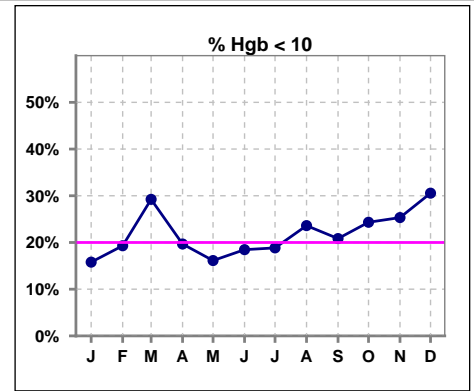
	Jan	Feb	Mar	Apr	May	Jun	Jul	Aug	Sep	Oct	Nov	Dec
# Fistula	47	47	47	46	50	55	55	54	60	57	58	60
# Fistula > 3 yrs	29	29	27	27	28	28	29	29	30	29	30	30
% Fistula > 3 yrs	62%	62%	57%	59%	56%	51%	53%	54%	50%	51%	52%	50%



V. ANEMIA

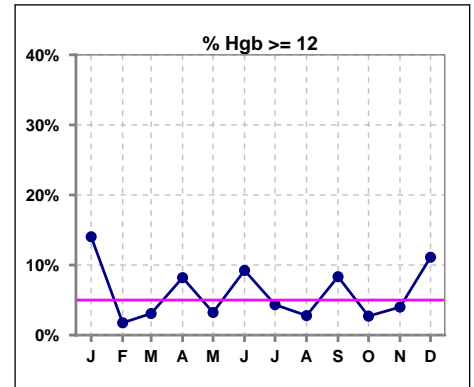
	Jan	Feb	Mar	Apr	May	Jun	Jul	Aug	Sep	Oct	Nov	Dec
# Hgb	57	57	65	61	62	65	69	72	72	74	75	72
# Hgb < 10	9	11	19	12	10	12	13	17	15	18	19	22
Pop. Mean	10.7	10.4	10.4	10.6	10.8	10.6	10.5	10.4	10.5	10.4	10.3	10.3
Std. Deviation	1.4	1.2	1.4	1.4	1.1	1.7	1.4	1.4	1.5	1.3	1.4	1.7
% Hgb < 10	16%	19%	29%	20%	16%	18%	19%	24%	21%	24%	25%	31%

Note: Excludes patients who received no ESA in month.



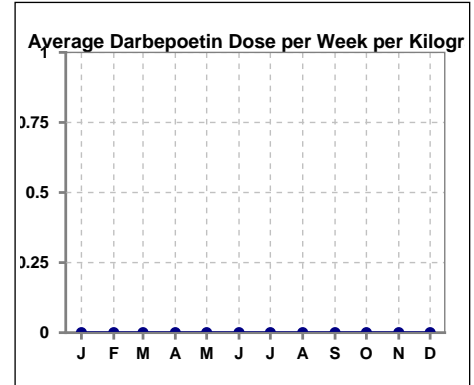
	Jan	Feb	Mar	Apr	May	Jun	Jul	Aug	Sep	Oct	Nov	Dec
# Hgb	57	57	65	61	62	65	69	72	72	74	75	72
# Hgb >= 12	8	1	2	5	2	6	3	2	6	2	3	8
Pop. Mean	10.7	10.4	10.4	10.6	10.8	10.6	10.5	10.4	10.5	10.4	10.3	10.3
Std. Deviation	1.4	1.2	1.4	1.4	1.1	1.7	1.4	1.4	1.5	1.3	1.4	1.7
% Hgb >= 12	14%	2%	3%	8%	3%	9%	4%	3%	8%	3%	4%	11%

Note: Excludes patients who received no ESA in month.



Average Darbepoetin Dose per Week per Kilogram

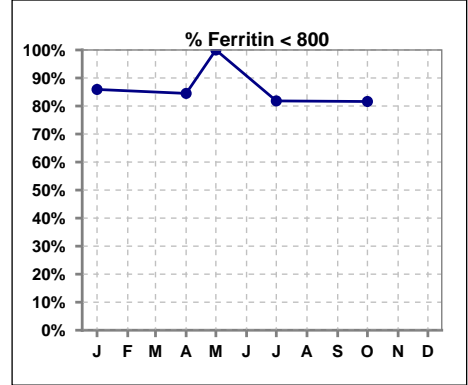
	Jan	Feb	Mar	Apr	May	Jun	Jul	Aug	Sep	Oct	Nov	Dec
# Average Darbepoetin	0	0	0	0	0	0	0	0	0	0	0	0



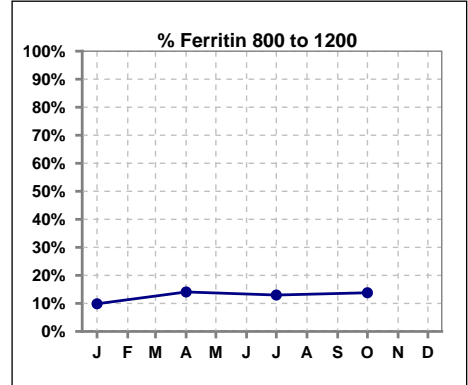
V. ANEMIA - CONT.

Iron Profile

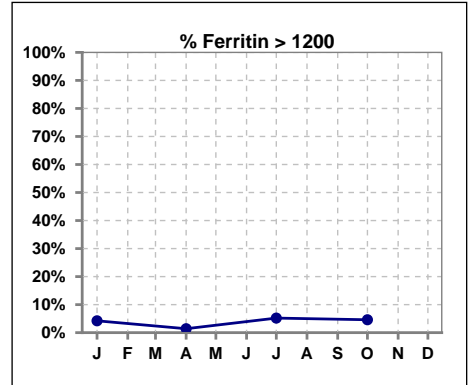
	Jan	Feb	Mar	Apr	May	Jun	Jul	Aug	Sep	Oct	Nov	Dec
# Ferritin	71			71	4		77			87		
# Ferritin < 800	61			60	4		63			71		
Pop. Mean	540			519	375		570			515		
Std. Deviation	996			979	277		1085			758		
% Ferritin < 800	86%			85%	100%		82%			82%		



	Jan	Feb	Mar	Apr	May	Jun	Jul	Aug	Sep	Oct	Nov	Dec
# Ferritin	71			71	4		77			87		
# Ferritin 800 to 1200	7			10			10			12		
Pop. Mean	540			519	375		570			515		
Std. Deviation	996			979	277		1085			758		
% Ferritin 800 to 1200	10%			14%			13%			14%		



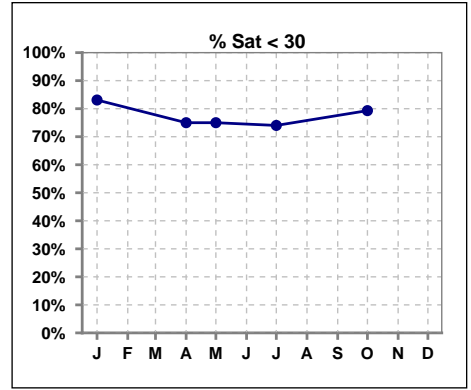
	Jan	Feb	Mar	Apr	May	Jun	Jul	Aug	Sep	Oct	Nov	Dec
# Ferritin	71			71	4		77			87		
# Ferritin > 1200	3			1			4			4		
Pop. Mean	540			519	375		570			515		
Std. Deviation	996			979	277		1085			758		
% Ferritin > 1200	4%			1%			5%			5%		



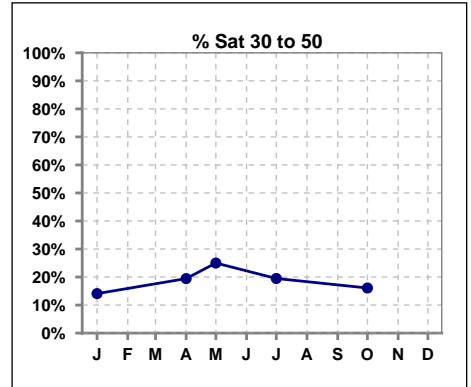
Methodology: a) All labs for 'Adequacy of Dialysis', 'Nutrition', 'Osteodystrophy', 'Anemia' and 'Diabetes' based on last value of month; b) BP's and #L processed are average of all values for month; c) Access data takes last access of month; d) Values for SGA and 'Infection Control' use most recent result.

V. ANEMIA - CONT.

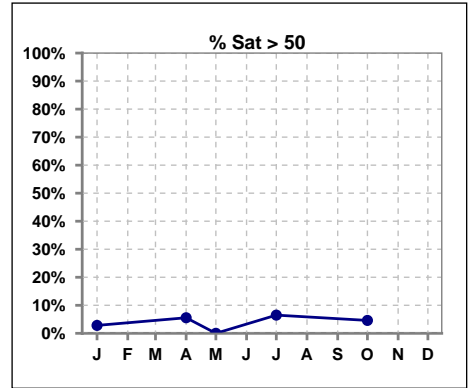
	Jan	Feb	Mar	Apr	May	Jun	Jul	Aug	Sep	Oct	Nov	Dec
# % Sat	71			72	4		77			87		
# % Sat < 30	59			54	3		57			69		
Pop. Mean	25			27	22		28			25		
Std. Deviation	16			19	8		18			28		
% % Sat < 30	83%			75%	75%		74%			79%		



	Jan	Feb	Mar	Apr	May	Jun	Jul	Aug	Sep	Oct	Nov	Dec
# % Sat	71			72	4		77			87		
# % Sat 30 to 50	10			14	1		15			14		
Pop. Mean	25			27	22		28			25		
Std. Deviation	16			19	8		18			28		
% % Sat 30 to 50	14%			19%	25%		19%			16%		



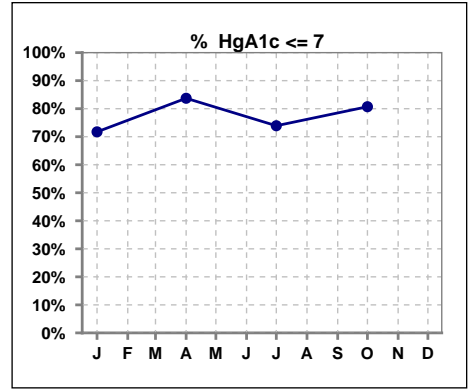
	Jan	Feb	Mar	Apr	May	Jun	Jul	Aug	Sep	Oct	Nov	Dec
# % Sat	71			72	4		77			87		
# % Sat > 50	2			4	0		5			4		
Pop. Mean	25			27	22		28			25		
Std. Deviation	16			19	8		18			28		
% % Sat > 50	3%			6%	0%		6%			5%		



Methodology: a) All labs for 'Adequacy of Dialysis', 'Nutrition', 'Osteodystrophy', 'Anemia' and 'Diabetes' based on last value of month; b) BP's and #L processed are average of all values for month; c) Access data takes last access of month; d) Values for SGA and 'Infection Control' use most recent result.

VI. Diabetes

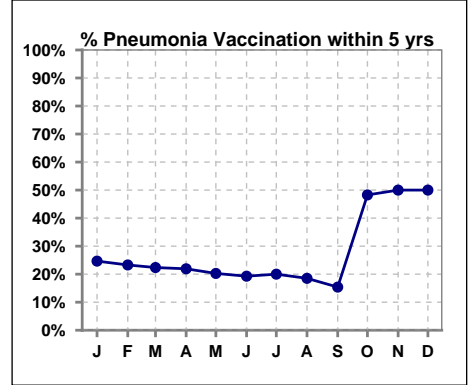
	Jan	Feb	Mar	Apr	May	Jun	Jul	Aug	Sep	Oct	Nov	Dec
# HgA1c	46			43			46			57		
# HgA1c <= 7	33			36			34			46		
Pop. Mean	6.4			6.3			6.5			6.1		
Std. Deviation	1.44			1.22			1.52			1.39		
% HgA1c <= 7	72%			84%			74%			81%		



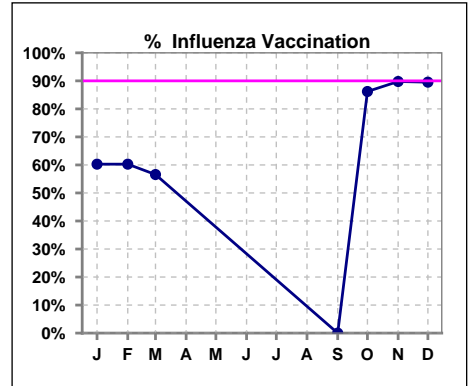
VII. Infection Control

Pneumonia vaccination within the past five years

	Jan	Feb	Mar	Apr	May	Jun	Jul	Aug	Sep	Oct	Nov	Dec
# Patient	73	73	76	73	74	83	80	81	91	87	88	86
# Pneumonia	18	17	17	16	15	16	16	15	14	42	44	43
% Pneumonia	25%	23%	22%	22%	20%	19%	20%	19%	15%	48%	50%	50%



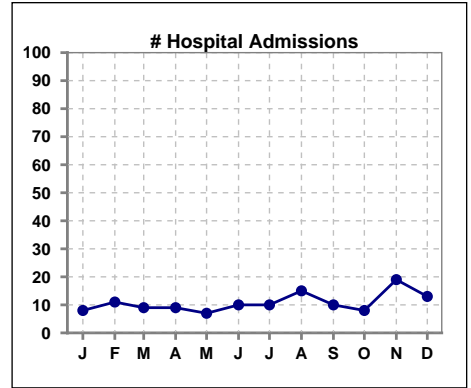
	Jan	Feb	Mar	Apr	May	Jun	Jul	Aug	Sep	Oct	Nov	Dec
# Patient	73	73	76						91	87	88	86
# Influenza	44	44	43						0	75	79	77
% Influenza	60%	60%	57%						0%	86%	90%	90%



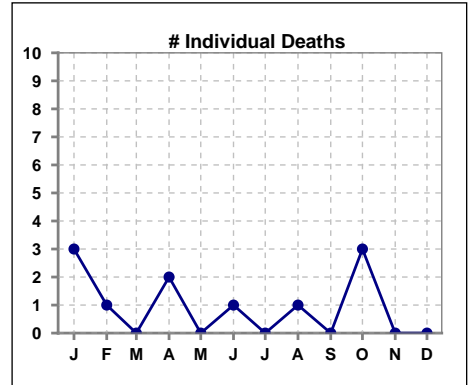
Methodology: a) All labs for 'Adequacy of Dialysis', 'Nutrition', 'Osteodystrophy', 'Anemia' and 'Diabetes' based on last value of month; b) BP's and #L processed are average of all values for month; c) Access data takes last access of month; d) Values for SGA and 'Infection Control' use most recent result.

VIII. Outcome measures

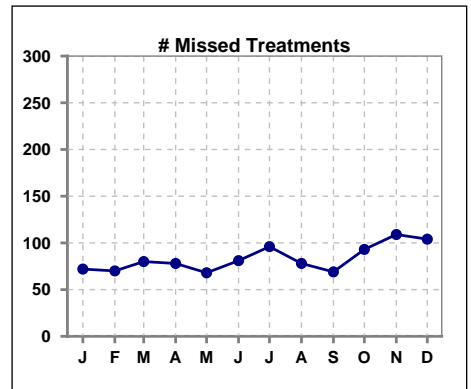
	Jan	Feb	Mar	Apr	May	Jun	Jul	Aug	Sep	Oct	Nov	Dec
# Patient	73	73	76	73	74	83	80	81	91	87	88	86
# Hospital Admissions	8	11	9	9	7	10	10	15	10	8	19	13



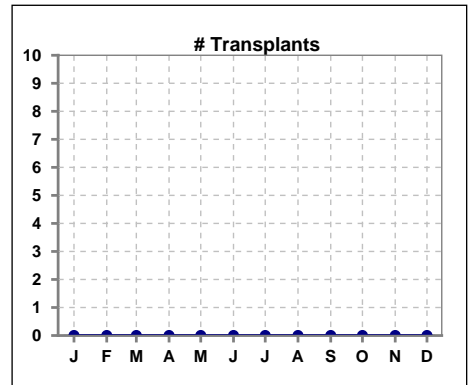
	Jan	Feb	Mar	Apr	May	Jun	Jul	Aug	Sep	Oct	Nov	Dec
# Patient	73	73	76	73	74	83	80	81	91	87	88	86
# Individual Deaths	3	1	0	2	0	1	0	1	0	3	0	0



	Jan	Feb	Mar	Apr	May	Jun	Jul	Aug	Sep	Oct	Nov	Dec
# Patient	73	73	76	73	74	83	80	81	91	87	88	86
# Missed Treatments	72	70	80	78	68	81	96	78	69	93	109	104



	Jan	Feb	Mar	Apr	May	Jun	Jul	Aug	Sep	Oct	Nov	Dec
# Patient	73	73	76	73	74	83	80	81	91	87	88	86
# Transplants	0	0	0	0	0	0	0	0	0	0	0	0



Methodology: a) All labs for 'Adequacy of Dialysis', 'Nutrition', 'Osteodystrophy', 'Anemia' and 'Diabetes' based on last value of month; b) BP's and #L processed are average of all values for month; c) Access data takes last access of month; d) Values for SGA and 'Infection Control' use most recent result.