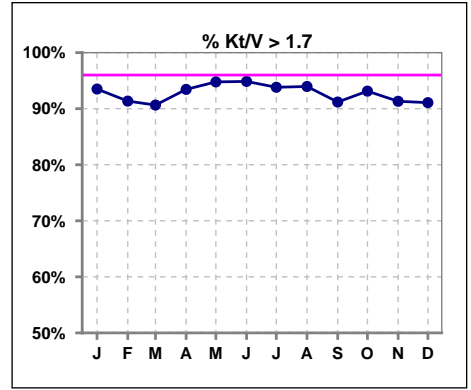
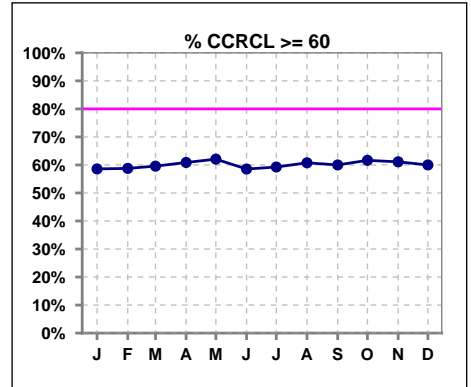


I. ADEQUACY OF DIALYSIS

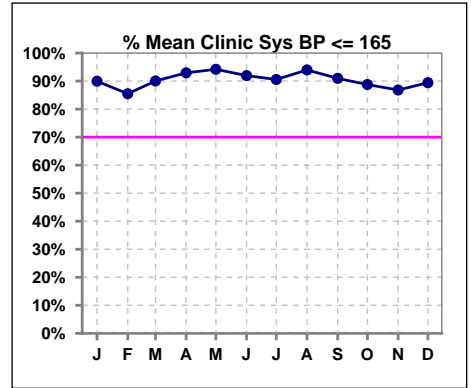
	Jan	Feb	Mar	Apr	May	Jun	Jul	Aug	Sep	Oct	Nov	Dec
# Kt/V - CA/CC PD	231	243	246	244	249	253	259	265	261	262	265	269
# Kt/V >= 1.7	216	222	223	228	236	240	243	249	238	244	242	245
Pop. Mean	2.17	2.17	2.19	2.19	2.19	2.16	2.18	2.17	2.15	2.18	2.17	2.16
Std. Deviation	0.45	0.46	0.50	0.46	0.44	0.41	0.45	0.45	0.48	0.48	0.51	0.49
% Kt/V >= 1.7	94%	91%	91%	93%	95%	95%	94%	94%	91%	93%	91%	91%



	Jan	Feb	Mar	Apr	May	Jun	Jul	Aug	Sep	Oct	Nov	Dec
# CRCL CA/CC PD	99	97	94	92	87	82	81	79	75	73	72	70
# CCRCL >= 60	58	57	56	56	54	48	48	48	45	45	44	42
Pop. Mean	74.48	74.64	73.91	74.46	74.93	73.59	73.71	74.35	73.21	74.30	74.28	74.47
Std. Deviation	32.04	32.28	30.30	30.40	30.99	30.50	30.68	30.87	30.24	30.63	30.84	31.25
% CCRCL >= 60	59%	59%	60%	61%	62%	59%	59%	61%	60%	62%	61%	60%



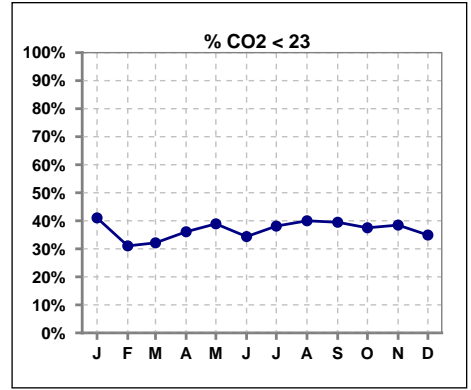
	Jan	Feb	Mar	Apr	May	Jun	Jul	Aug	Sep	Oct	Nov	Dec
# Mean Clinic Sys BP	239	248	251	255	259	261	265	266	266	267	273	274
# Sys BP <= 165	219	215	229	239	247	243	244	253	244	238	243	247
Pop. Mean	139	143	140	138	138	138	139	137	139	143	141	141
Std. Deviation	19.5	70.9	44.0	19.6	20.6	20.2	19.1	18.9	18.8	41.5	21.4	19.7
% Sys BP <=165	90%	85%	90%	93%	94%	92%	91%	94%	91%	89%	87%	89%



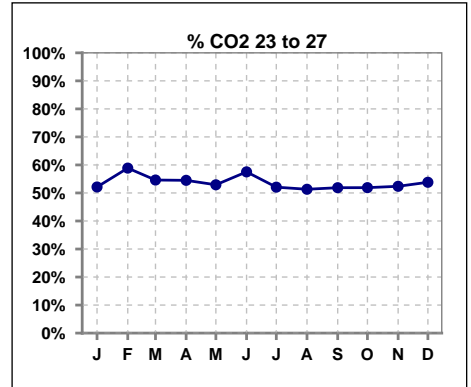
Methodology: a) Kt/V, CRCL and nPNa values are 4 month rolling mean of last value for each month, all other report lab results are based on last value of month; b) BP's are average of all values for month.

I. ADEQUACY OF DIALYSIS - CONT.

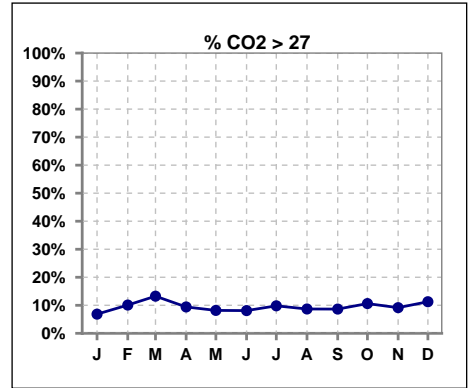
	Jan	Feb	Mar	Apr	May	Jun	Jul	Aug	Sep	Oct	Nov	Dec
# CO2	234	248	249	255	257	259	265	265	266	264	273	275
# CO2 < 23	96	77	80	92	100	89	101	106	105	99	105	96
Pop. Mean	23	24	24	24	23	23	23	23	23	24	23	24
Std. Deviation	3.05	2.98	2.93	3.01	3.10	2.95	3.10	3.03	3.00	2.86	3.05	3.29
% CO2 < 23	41%	31%	32%	36%	39%	34%	38%	40%	39%	38%	38%	35%



	Jan	Feb	Mar	Apr	May	Jun	Jul	Aug	Sep	Oct	Nov	Dec
# CO2	234	248	249	255	257	259	265	265	266	264	273	275
# CO2 23 to 27	122	146	136	139	136	149	138	136	138	137	143	148
Pop. Mean	23	24	24	24	23	23	23	23	23	24	23	24
Std. Deviation	3.05	2.98	2.93	3.01	3.10	2.95	3.10	3.03	3.00	2.86	3.05	3.29
% CO2 23 to 27	52%	59%	55%	55%	53%	58%	52%	51%	52%	52%	52%	54%



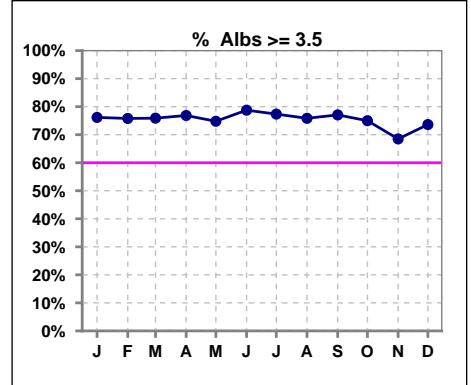
	Jan	Feb	Mar	Apr	May	Jun	Jul	Aug	Sep	Oct	Nov	Dec
# CO2	234	248	249	255	257	259	265	265	266	264	273	275
# CO2 > 27	16	25	33	24	21	21	26	23	23	28	25	31
Pop. Mean	23	24	24	24	23	23	23	23	23	24	23	24
Std. Deviation	3.05	2.98	2.93	3.01	3.10	2.95	3.10	3.03	3.00	2.86	3.05	3.29
% CO2 > 27	7%	10%	13%	9%	8%	8%	10%	9%	9%	11%	9%	11%



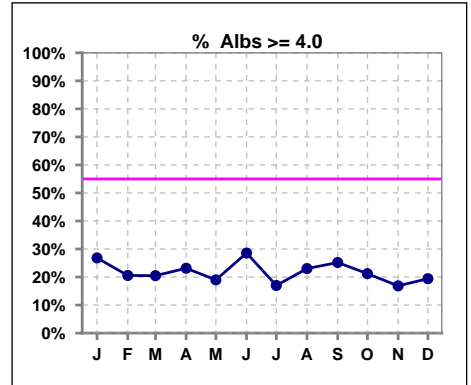
*Albumin values use BCG method - as of July 2001

II. NUTRITION

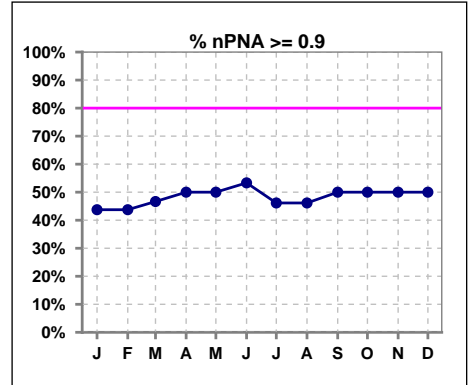
	Jan	Feb	Mar	Apr	May	Jun	Jul	Aug	Sep	Oct	Nov	Dec
# Albumin	235	248	249	255	258	259	265	265	266	264	273	273
# Albumin >= 3.5	179	188	189	196	193	204	205	201	205	198	187	201
Pop. Mean	3.7	3.7	3.7	3.7	3.7	3.7	3.7	3.7	3.7	3.7	3.6	3.6
Std. Deviation	0.35	0.35	0.37	0.39	0.39	0.40	0.35	0.37	0.37	0.35	0.35	0.36
% Alb >= 3.5	76%	76%	76%	77%	75%	79%	77%	76%	77%	75%	68%	74%



	Jan	Feb	Mar	Apr	May	Jun	Jul	Aug	Sep	Oct	Nov	Dec
# Albumin	235	248	249	255	258	259	265	265	266	264	273	273
# Albumin >= 4.0	63	51	51	59	49	74	45	61	67	56	46	53
Pop. Mean	3.7	3.7	3.7	3.7	3.7	3.7	3.7	3.7	3.7	3.7	3.6	3.6
Std. Deviation	0.35	0.35	0.37	0.39	0.39	0.40	0.35	0.37	0.37	0.35	0.35	0.36
% Alb >= 4.0	27%	21%	20%	23%	19%	29%	17%	23%	25%	21%	17%	19%



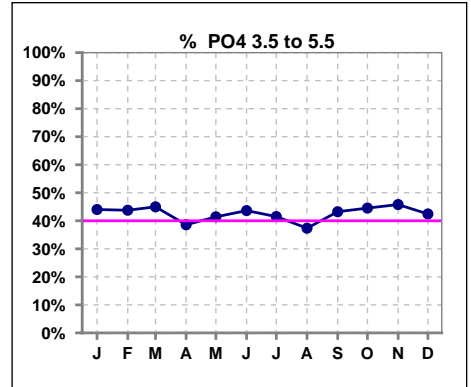
	Jan	Feb	Mar	Apr	May	Jun	Jul	Aug	Sep	Oct	Nov	Dec
# nPNA	16	16	15	14	14	15	13	13	14	14	14	14
# nPNA >= 0.9	7	7	7	7	7	8	6	6	7	7	7	7
Pop. Mean	1.0	1.0	1.0	1.0	1.0	1.0	1.0	1.0	1.0	1.0	1.0	1.0
Std. Deviation	0.40	0.40	0.41	0.43	0.43	0.41	0.41	0.41	0.40	0.40	0.40	0.40
% nPNA >= 0.9	44%	44%	47%	50%	50%	53%	46%	46%	50%	50%	50%	50%



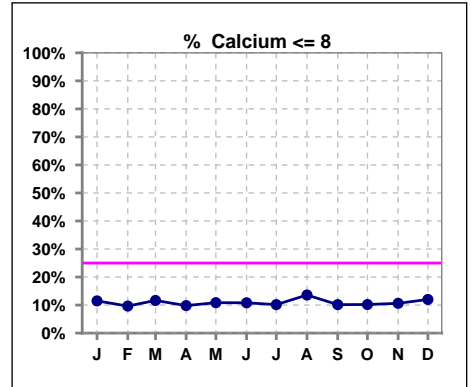
Lab methodology for PTH changed January 2012

III. OSTEODYSTROPHY

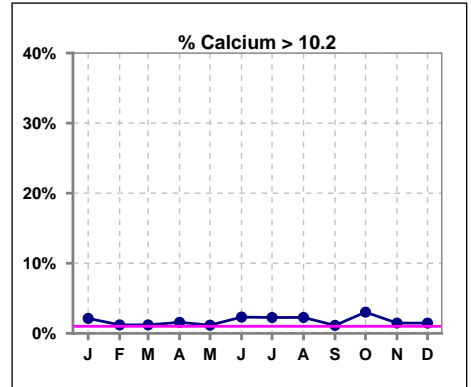
	Jan	Feb	Mar	Apr	May	Jun	Jul	Aug	Sep	Oct	Nov	Dec
# PO4	234	249	249	254	256	259	265	265	266	265	273	271
# PO4 3.5 to 5.5	103	109	112	98	106	113	110	99	115	118	125	115
Pop. Mean	5.8	5.8	5.7	6.0	5.9	5.8	6.0	6.0	6.0	5.9	6.0	6.0
Std. Deviation	1.57	1.72	1.65	1.81	1.70	1.70	1.74	1.69	1.76	1.74	1.91	1.76
% PO4 3.5 to 5.5	44%	44%	45%	39%	41%	44%	42%	37%	43%	45%	46%	42%



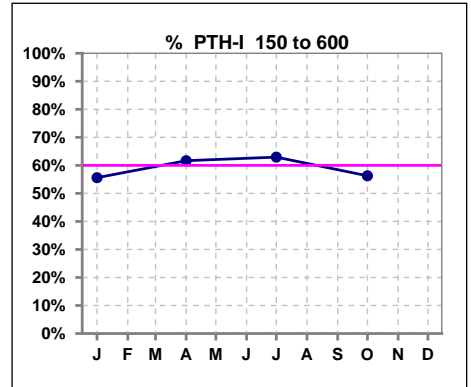
	Jan	Feb	Mar	Apr	May	Jun	Jul	Aug	Sep	Oct	Nov	Dec
# Calcium	235	249	249	255	258	259	266	265	266	265	273	275
# Calcium <= 8	27	24	29	25	28	28	27	36	27	27	29	33
Pop. Mean	8.9	8.9	8.9	8.9	8.9	9.0	9.0	8.9	8.9	9.0	8.8	8.9
Std. Deviation	0.69	0.69	0.71	0.73	0.68	0.72	0.73	0.73	0.69	0.74	0.74	0.72
% Calcium <= 8	11%	10%	12%	10%	11%	11%	10%	14%	10%	10%	11%	12%



	Jan	Feb	Mar	Apr	May	Jun	Jul	Aug	Sep	Oct	Nov	Dec
# Calcium	235	249	249	255	258	259	266	265	266	265	273	275
# Calcium > 10.2	5	3	3	4	3	6	6	6	3	8	4	4
Pop. Mean	8.9	8.9	8.9	8.9	8.9	9.0	9.0	8.9	8.9	9.0	8.8	8.9
Std. Deviation	0.69	0.69	0.71	0.73	0.68	0.72	0.73	0.73	0.69	0.74	0.74	0.72
% Calcium > 10.2	2%	1%	1%	2%	1%	2%	2%	2%	1%	3%	1%	1%



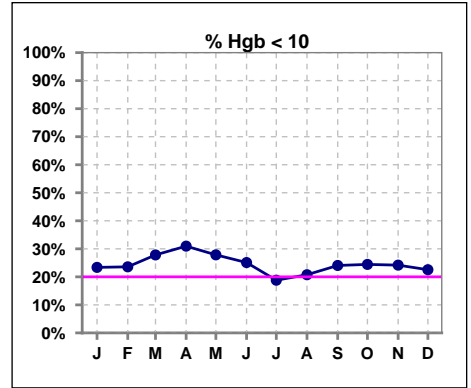
	Jan	Feb	Mar	Apr	May	Jun	Jul	Aug	Sep	Oct	Nov	Dec
# PTH-I	232			253			259			263		
# PTH-I 150 to 600	129			156			163			148		
Pop. Mean	523			499			427			459		
Std. Deviation	408			390			329			370		
% PTH-I 150 to 600	56%			62%			63%			56%		



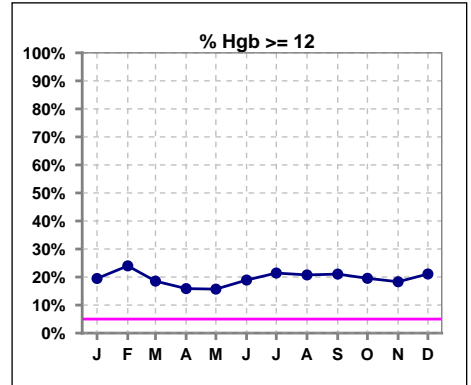
Methodology: a) KtV, CRCL and nPNa values are 4 month rolling mean of last value for each month, all other report lab results are based on last value of month; b) BP's are average of all values for month.

IV. ANEMIA

	Jan	Feb	Mar	Apr	May	Jun	Jul	Aug	Sep	Oct	Nov	Dec
# Hgb	231	246	248	252	255	259	266	265	266	266	273	275
# Hgb < 10	54	58	69	78	71	65	50	55	64	65	66	62
Pop. Mean	10.9	10.9	10.8	10.7	10.6	10.8	11.0	10.9	10.9	10.8	10.8	11.0
Std. Deviation	1.5	1.5	1.6	1.5	1.5	1.5	1.4	1.4	1.5	1.6	1.5	1.6
% Hgb < 10	23%	24%	28%	31%	28%	25%	19%	21%	24%	24%	24%	23%



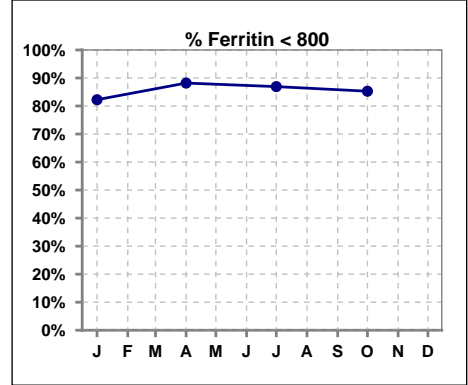
	Jan	Feb	Mar	Apr	May	Jun	Jul	Aug	Sep	Oct	Nov	Dec
# Hgb	231	246	248	252	255	259	266	265	266	266	273	275
# Hgb >= 12	45	59	46	40	40	49	57	55	56	52	50	58
Pop. Mean	10.9	10.9	10.8	10.7	10.6	10.8	11.0	10.9	10.9	10.8	10.8	11.0
Std. Deviation	1.5	1.5	1.6	1.5	1.5	1.5	1.4	1.4	1.5	1.6	1.5	1.6
% Hgb >= 12	19%	24%	19%	16%	16%	19%	21%	21%	21%	20%	18%	21%



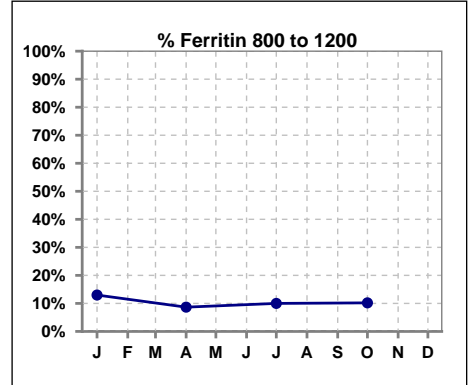
IV. ANEMIA - CONT.

Iron Profile

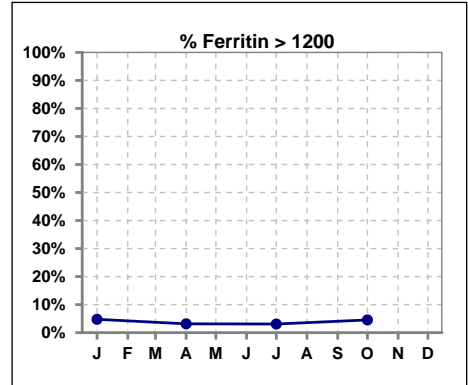
	Jan	Feb	Mar	Apr	May	Jun	Jul	Aug	Sep	Oct	Nov	Dec
# Ferritin	231			254			260			265		
# Ferritin < 800	190			224			226			226		
Pop. Mean	467			427			402			445		
Std. Deviation	414			366			351			414		
% Ferritin < 800	82%			88%			87%			85%		



	Jan	Feb	Mar	Apr	May	Jun	Jul	Aug	Sep	Oct	Nov	Dec
# Ferritin	231			254			260			265		
# Ferritin 800 to 1200	30			22			26			27		
Pop. Mean	467			427			402			445		
Std. Deviation	414			366			351			414		
% Ferritin 800 to 1200	13%			9%			10%			10%		

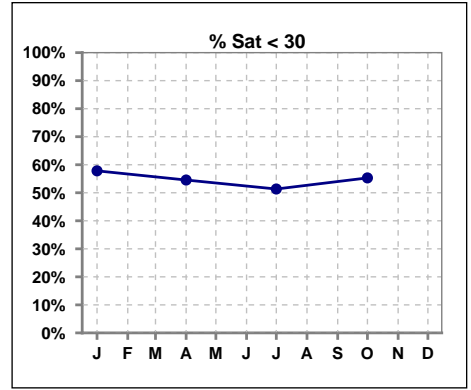


	Jan	Feb	Mar	Apr	May	Jun	Jul	Aug	Sep	Oct	Nov	Dec
# Ferritin	231			254			260			265		
# Ferritin > 1200	11			8			8			12		
Pop. Mean	467			427			402			445		
Std. Deviation	414			366			351			414		
% Ferritin > 1200	5%			3%			3%			5%		

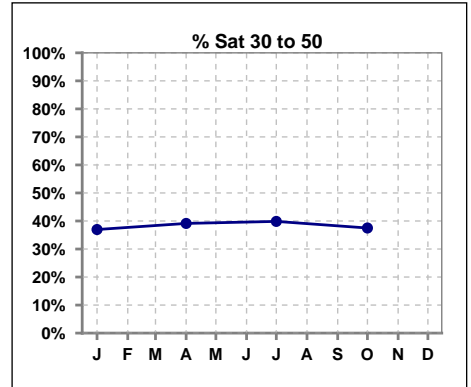


IV. ANEMIA - CONT.

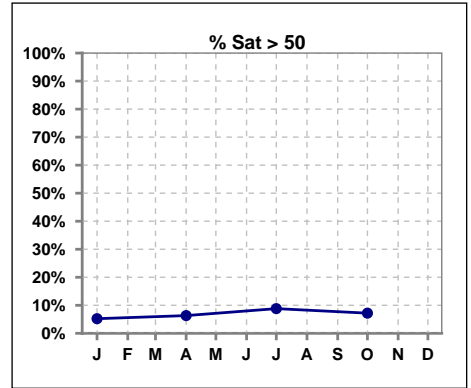
	Jan	Feb	Mar	Apr	May	Jun	Jul	Aug	Sep	Oct	Nov	Dec
# % Sat	230			253			261			264		
# % Sat < 30	133			138			134			146		
Pop. Mean	29			29			31			30		
Std. Deviation	14			14			15			14		
% % Sat < 30	58%			55%			51%			55%		



	Jan	Feb	Mar	Apr	May	Jun	Jul	Aug	Sep	Oct	Nov	Dec
# % Sat	230			253			261			264		
# % Sat 30 to 50	85			99			104			99		
Pop. Mean	29			29			31			30		
Std. Deviation	14			14			15			14		
% Sat% 30 to 50	37%			39%			40%			38%		



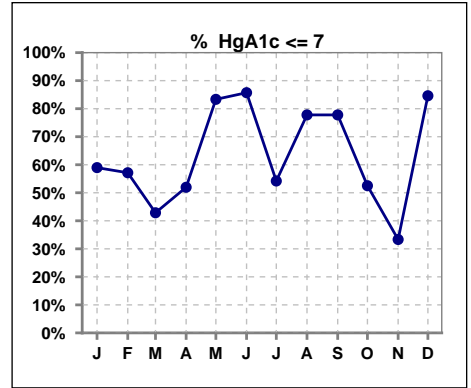
	Jan	Feb	Mar	Apr	May	Jun	Jul	Aug	Sep	Oct	Nov	Dec
# % Sat	230			253			261			264		
# % Sat > 50	12			16			23			19		
Pop. Mean	29			29			31			30		
Std. Deviation	14			14			15			14		
% Sat% > 50	5%			6%			9%			7%		



Northwest Kidney Centers - Home Peritoneal Dialysis
Quality Assurance Reports
 Through period ending Dec. 31, 2021

V. Diabetes

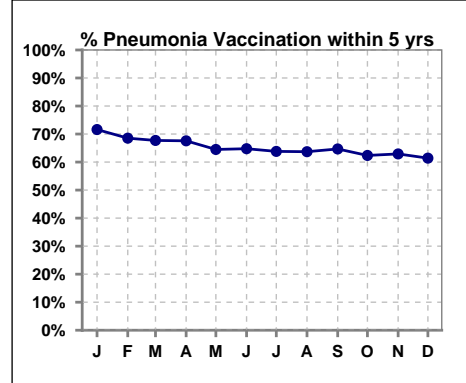
	Jan	Feb	Mar	Apr	May	Jun	Jul	Aug	Sep	Oct	Nov	Dec
# HgA1c	117	7	7	127	12	7	131	9	9	139	9	13
# HgA1c <= 7	69	4	3	66	10	6	71	7	7	73	3	11
Pop. Mean	7.0	6.6	6.7	7.1	6.4	6.6	7.2	6.6	6.0	7.2	7.8	6.3
Std. Deviation	1.34	1.41	1.47	1.36	0.72	1.00	1.28	1.29	0.94	1.30	1.86	0.96
% HgA1c <= 7	59%	57%	43%	52%	83%	86%	54%	78%	78%	53%	33%	85%



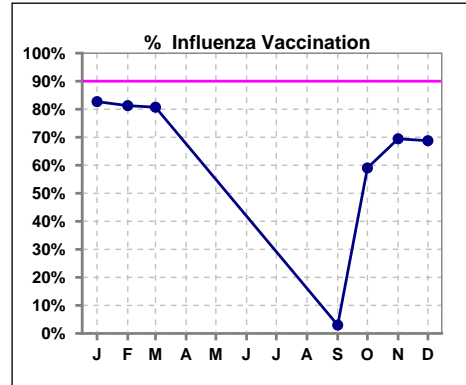
VI. Infection Control

Pneumonia vaccination within the past five years

	Jan	Feb	Mar	Apr	May	Jun	Jul	Aug	Sep	Oct	Nov	Dec
# Patient	243	251	254	256	262	264	268	270	269	271	275	285
# Pneumonia	174	172	172	173	169	171	171	172	174	169	173	175
% Pneumonia	72%	69%	68%	68%	65%	65%	64%	64%	65%	62%	63%	61%



	Jan	Feb	Mar	Apr	May	Jun	Jul	Aug	Sep	Oct	Nov	Dec
# Patient	243	251	254						269	271	275	285
# Influenza	201	204	205						8	160	191	196
% Influenza	83%	81%	81%						3%	59%	69%	69%



Exit Site Infection Rate

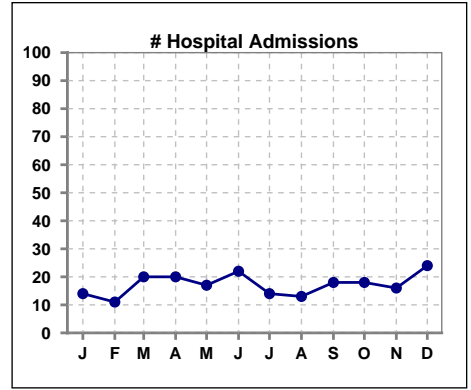
	Jan	Feb	Mar	Apr	May	Jun	Jul	Aug	Sep	Oct	Nov	Dec
Current Month	115.58	72.01	82.29	118.61	251.84	0	0	131.89	127.02	132.41	259.37	90.60
Rolling Year-to-date	0.05	0.07	0.08	0.07	0.09	0.09	0.09	0.08	0.09	0.09	0.09	0.09

Peritonitis Infection Rate

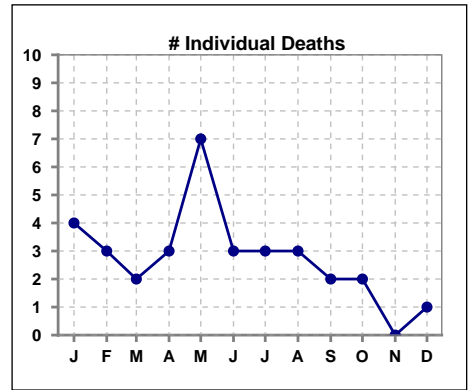
	Jan	Feb	Mar	Apr	May	Jun	Jul	Aug	Sep	Oct	Nov	Dec
Current Month	57.79	54.01	35.27	47.44	83.95	61.64	262.13	52.75	31.76	37.83	51.87	54.36
Rolling Year-to-date	0.24	0.23	0.26	0.26	0.26	0.26	0.26	0.25	0.26	0.28	0.28	0.26

VIII. Outcome measures

	Jan	Feb	Mar	Apr	May	Jun	Jul	Aug	Sep	Oct	Nov	Dec
# Patient	243	251	254	256	262	264	268	270	269	271	275	285
# Hospital Admissions	14	11	20	20	17	22	14	13	18	18	16	24



	Jan	Feb	Mar	Apr	May	Jun	Jul	Aug	Sep	Oct	Nov	Dec
# Patient	243	251	254	256	262	264	268	270	269	271	275	285
# Individual Deaths	4	3	2	3	7	3	3	3	2	2	0	1



	Jan	Feb	Mar	Apr	May	Jun	Jul	Aug	Sep	Oct	Nov	Dec
# Patient	243	251	254	256	262	264	268	270	269	271	275	285
# Transplants	3	2	2	5	2	0	0	3	1	1	2	1

