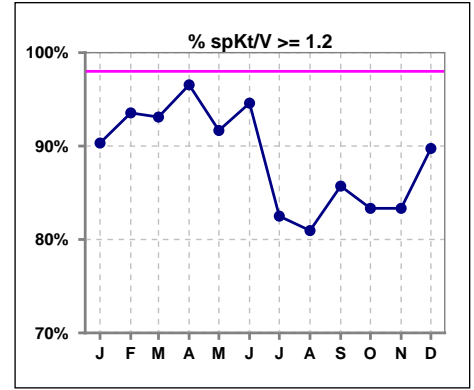
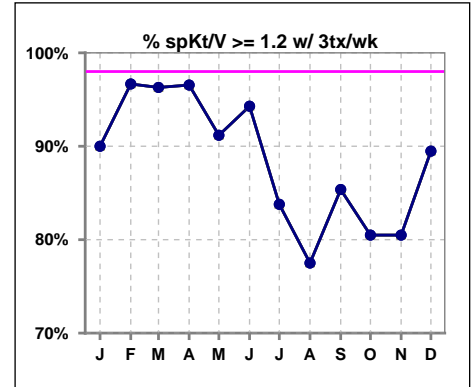


I. ADEQUACY OF DIALYSIS

	Jan	Feb	Mar	Apr	May	Jun	Jul	Aug	Sep	Oct	Nov	Dec
# spKt/V	31	31	29	29	36	37	40	42	42	42	42	39
# spKt/V >= 1.2	28	29	27	28	33	35	33	34	36	35	35	35
Pop. Mean	1.61	1.56	1.56	1.57	1.52	1.53	1.47	1.46	1.50	1.48	1.60	1.50
Std. Deviation	0.42	0.37	0.35	0.31	0.33	0.32	0.35	0.35	0.33	0.31	0.58	0.32
% spKt/V >= 1.2	90%	94%	93%	97%	92%	95%	83%	81%	86%	83%	83%	90%



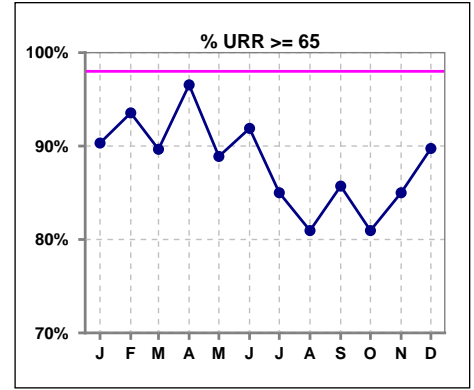
	Jan	Feb	Mar	Apr	May	Jun	Jul	Aug	Sep	Oct	Nov	Dec
# spKt/V w/ 3tx/wk	30	30	27	29	34	35	37	40	41	41	41	38
# spKt/V >= 1.2 w/3tx/wk	27	29	26	28	31	33	31	31	35	33	33	34
Pop. Mean	1.61	1.57	1.57	1.57	1.51	1.54	1.49	1.45	1.49	1.47	1.60	1.49
Std. Deviation	0.43	0.36	0.36	0.31	0.33	0.33	0.35	0.36	0.33	0.32	0.58	0.32
% >= 1.2 w/3tx/wk	90%	97%	96%	97%	91%	94%	84%	78%	85%	80%	80%	89%



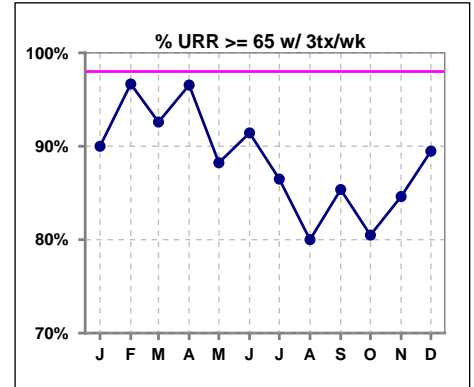
Methodology: a) All labs for 'Adequacy of Dialysis', 'Nutrition', 'Osteodystrophy', 'Anemia' and 'Diabetes' based on last value of month; b) BP's and #L processed are average of all values for month; c) Access data takes last access of month; d) Values for SGA and 'Infection Control' use most recent result.

I. ADEQUACY OF DIALYSIS - CONT.

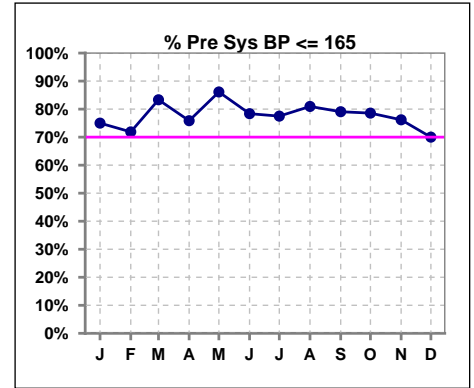
	Jan	Feb	Mar	Apr	May	Jun	Jul	Aug	Sep	Oct	Nov	Dec
# URR	31	31	29	29	36	37	40	42	42	42	40	39
# URR >= 65	28	29	26	28	32	34	34	34	36	34	34	35
Pop. Mean	73	73	73	74	72	73	71	70	72	71	72	72
Std. Deviation	7.90	7.46	7.84	6.54	7.27	6.38	8.80	8.63	7.47	7.39	7.45	7.07
% URR >= 65	90%	94%	90%	97%	89%	92%	85%	81%	86%	81%	85%	90%



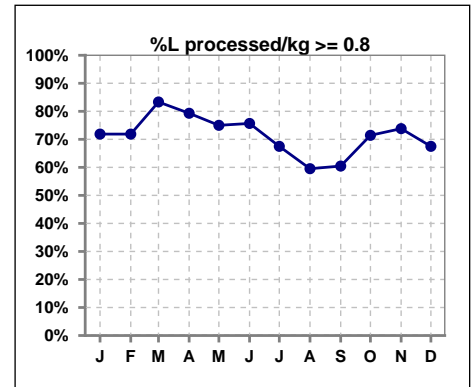
	Jan	Feb	Mar	Apr	May	Jun	Jul	Aug	Sep	Oct	Nov	Dec
# URR w/ 3tx/wk	30	30	27	29	34	35	37	40	41	41	39	38
# URR>=65 w/ 3tx/wk	27	29	25	28	30	32	32	32	35	33	33	34
Pop. Mean	74	73	73	74	72	73	71	70	71	71	72	72
Std. Deviation	8.01	7.26	7.94	6.54	7.39	6.49	8.32	8.74	7.52	7.41	7.52	7.12
% URR>=65 w/ 3tx/wk	90%	97%	93%	97%	88%	91%	86%	80%	85%	80%	85%	89%



	Jan	Feb	Mar	Apr	May	Jun	Jul	Aug	Sep	Oct	Nov	Dec
# Pre Sys BP	32	32	30	29	36	37	40	42	43	42	42	40
# Pre Sys BP <= 165	24	24	25	23	31	30	32	34	34	33	33	28
Pop. Mean	155	156	155	155	152	153	152	152	150	153	152	154
Std. Deviation	18.1	17.2	14.8	14.1	17.1	13.8	17.7	18.1	18.4	15.9	16.5	19.4
%Pre Sys BP <=165	75%	72%	83%	76%	86%	78%	78%	81%	79%	79%	76%	70%



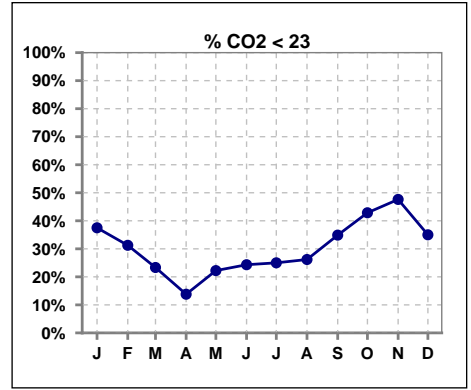
	Jan	Feb	Mar	Apr	May	Jun	Jul	Aug	Sep	Oct	Nov	Dec
# L processed/kg	32	32	30	29	36	37	40	42	43	42	42	40
# L processed/kg>=0.8	23	23	25	23	27	28	27	25	26	30	31	27
Pop. Mean	1	1	1	1	1	1	1	1	1	1	1	1
Std. Deviation	0.3	0.3	0.3	0.3	0.2	0.3	0.3	0.3	0.3	0.3	0.3	0.3
% L processed/kg>=0.8	72%	72%	83%	79%	75%	76%	68%	60%	60%	71%	74%	68%



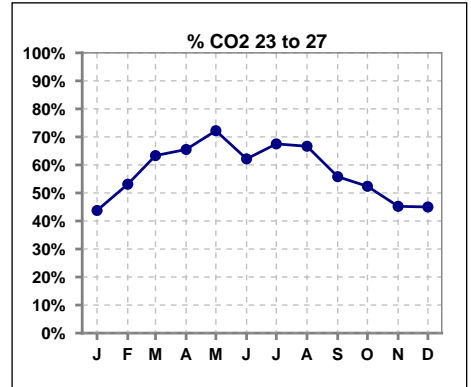
Methodology: a) All labs for 'Adequacy of Dialysis', 'Nutrition', 'Osteodystrophy', 'Anemia' and 'Diabetes' based on last value of month; b) BP's and #L processed are average of all values for month; c) Access data takes last access of month; d) Values for SGA and 'Infection Control' use most recent result.

I. ADEQUACY OF DIALYSIS - CONT.

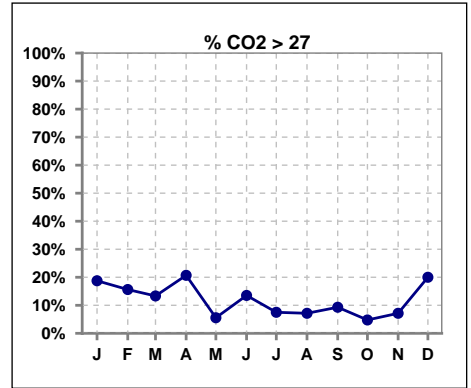
	Jan	Feb	Mar	Apr	May	Jun	Jul	Aug	Sep	Oct	Nov	Dec
# CO2	32	32	30	29	36	37	40	42	43	42	42	40
# CO2 < 23	12	10	7	4	8	9	10	11	15	18	20	14
Pop. Mean	24	24	25	25	25	25	24	24	24	23	23	24
Std. Deviation	2.97	2.66	2.97	2.96	2.63	2.94	3.19	2.76	3.96	2.95	2.98	3.25
% CO2 < 23	38%	31%	23%	14%	22%	24%	25%	26%	35%	43%	48%	35%



	Jan	Feb	Mar	Apr	May	Jun	Jul	Aug	Sep	Oct	Nov	Dec
# CO2	32	32	30	29	36	37	40	42	43	42	42	40
# CO2 23 to 27	14	17	19	19	26	23	27	28	24	22	19	18
Pop. Mean	24	24	25	25	25	25	24	24	24	23	23	24
Std. Deviation	2.97	2.66	2.97	2.96	2.63	2.94	3.19	2.76	3.96	2.95	2.98	3.25
% CO2 23 to 27	44%	53%	63%	66%	72%	62%	68%	67%	56%	52%	45%	45%



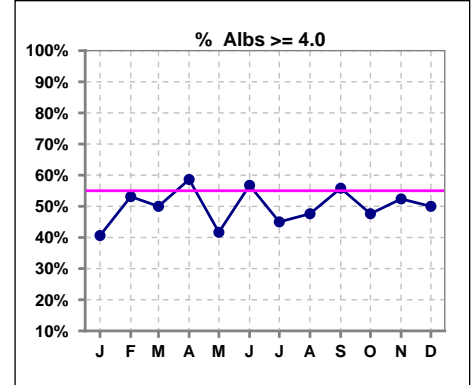
	Jan	Feb	Mar	Apr	May	Jun	Jul	Aug	Sep	Oct	Nov	Dec
# CO2	32	32	30	29	36	37	40	42	43	42	42	40
# CO2 > 27	6	5	4	6	2	5	3	3	4	2	3	8
Pop. Mean	24	24	25	25	25	25	24	24	24	23	23	24
Std. Deviation	2.97	2.66	2.97	2.96	2.63	2.94	3.19	2.76	3.96	2.95	2.98	3.25
% CO2 > 27	19%	16%	13%	21%	6%	14%	8%	7%	9%	5%	7%	20%



*Albumin values use BCG method - as of July 2001

II. NUTRITION

	Jan	Feb	Mar	Apr	May	Jun	Jul	Aug	Sep	Oct	Nov	Dec
# Albumin	32	32	30	29	36	37	40	42	43	42	42	40
# Albumin >= 4.0	13	17	15	17	15	21	18	20	24	20	22	20
Pop. Mean	3.9	3.9	3.9	4.0	3.8	3.9	3.8	3.9	3.9	3.9	3.8	3.8
Std. Deviation	0.44	0.40	0.40	0.44	0.41	0.44	0.47	0.53	0.54	0.48	0.51	0.52
% Alb >= 4.0	41%	53%	50%	59%	42%	57%	45%	48%	56%	48%	52%	50%

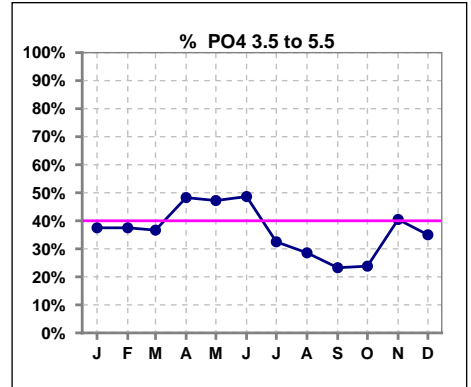


Methodology: a) All labs for 'Adequacy of Dialysis', 'Nutrition', 'Osteodystrophy', 'Anemia' and 'Diabetes' based on last value of month; b) BP's and #L processed are average of all values for month; c) Access data takes last access of month; d) Values for SGA and 'Infection Control' use most recent result.

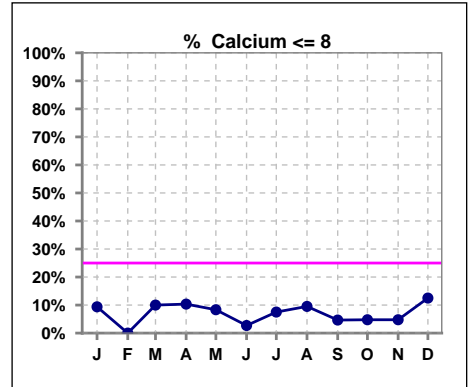
Lab methodology for PTH changed January 2012

III. OSTEODYSTROPHY

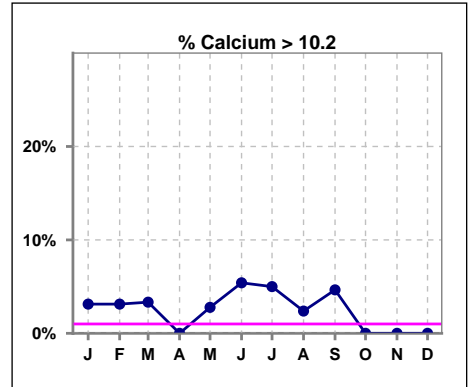
	Jan	Feb	Mar	Apr	May	Jun	Jul	Aug	Sep	Oct	Nov	Dec
# PO4	32	32	30	29	36	37	40	42	43	42	42	40
# PO4 3.5 to 5.5	12	12	11	14	17	18	13	12	10	10	17	14
Pop. Mean	6.4	6.6	6.8	6.3	6.3	6.2	6.6	6.8	6.9	6.8	6.4	6.2
Std. Deviation	2.00	1.86	2.09	2.15	1.97	2.01	2.21	2.40	2.31	2.04	1.87	1.74
% PO4 3.5 to 5.5	38%	38%	37%	48%	47%	49%	33%	29%	23%	24%	40%	35%



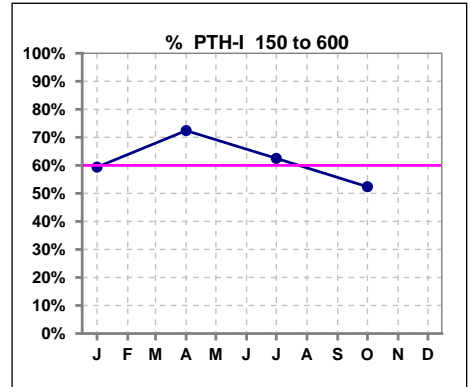
	Jan	Feb	Mar	Apr	May	Jun	Jul	Aug	Sep	Oct	Nov	Dec
# Calcium	32	32	30	29	36	37	40	42	43	42	42	40
# Calcium <= 8	3	0	3	3	3	1	3	4	2	2	2	5
Pop. Mean	9.3	9.3	9.3	9.3	9.2	9.4	9.2	9.2	9.3	9.2	9.3	9.2
Std. Deviation	0.75	0.59	0.72	0.63	0.71	0.69	0.74	0.84	0.71	0.71	0.61	0.79
% Calcium <= 8	9%	0%	10%	10%	8%	3%	8%	10%	5%	5%	5%	13%



	Jan	Feb	Mar	Apr	May	Jun	Jul	Aug	Sep	Oct	Nov	Dec
# Calcium	32	32	30	29	36	37	40	42	43	42	42	40
# Calcium > 10.2	1	1	1	0	1	2	2	1	2	0	0	0
Pop. Mean	9.3	9.3	9.3	9.3	9.2	9.4	9.2	9.2	9.3	9.2	9.3	9.2
Std. Deviation	0.75	0.59	0.72	0.63	0.71	0.69	0.74	0.84	0.71	0.71	0.61	0.79
% Calcium > 10.2	3%	3%	3%	0%	3%	5%	5%	2%	5%	0%	0%	0%



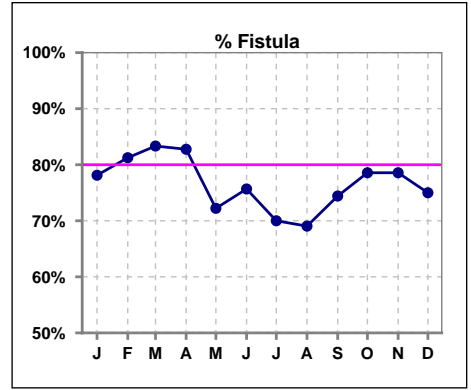
	Jan	Feb	Mar	Apr	May	Jun	Jul	Aug	Sep	Oct	Nov	Dec
# PTH-I	32			29			40			42		
# PTH-I 150 to 600	19			21			25			22		
Pop. Mean	522			495			549			660		
Std. Deviation	429			457			416			577		
% PTH-I 150 to 600	59%			72%			63%			52%		



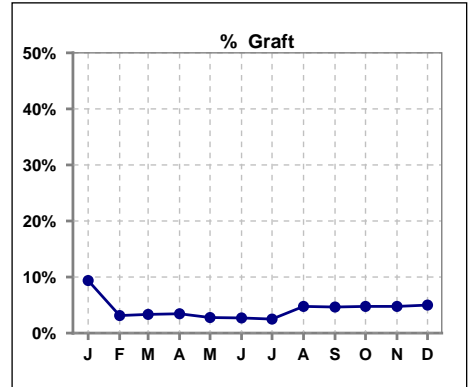
Methodology: a) All labs for 'Adequacy of Dialysis', 'Nutrition', 'Osteodystrophy', 'Anemia' and 'Diabetes' based on last value of month; b) BP's and #L processed are average of all values for month; c) Access data takes last access of month; d) Values for SGA and 'Infection Control' use most recent result.

IV. ACCESS

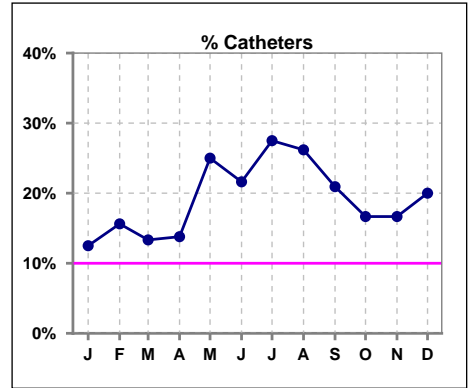
	Jan	Feb	Mar	Apr	May	Jun	Jul	Aug	Sep	Oct	Nov	Dec
# Access	32	32	30	29	36	37	40	42	43	42	42	40
# Fistula	25	26	25	24	26	28	28	29	32	33	33	30
% Fistula	78%	81%	83%	83%	72%	76%	70%	69%	74%	79%	79%	75%



	Jan	Feb	Mar	Apr	May	Jun	Jul	Aug	Sep	Oct	Nov	Dec
# Access	32	32	30	29	36	37	40	42	43	42	42	40
# Graft	3	1	1	1	1	1	1	2	2	2	2	2
% Graft	9%	3%	3%	3%	3%	3%	3%	5%	5%	5%	5%	5%



	Jan	Feb	Mar	Apr	May	Jun	Jul	Aug	Sep	Oct	Nov	Dec
# Access	32	32	30	29	36	37	40	42	43	42	42	40
# Catheters	4	5	4	4	9	8	11	11	9	7	7	8
% Catheters	13%	16%	13%	14%	25%	22%	28%	26%	21%	17%	17%	20%



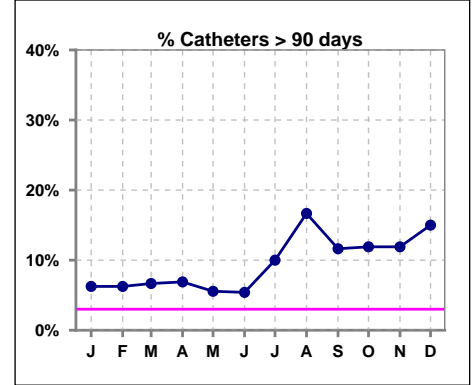
Methodology: a) All labs for 'Adequacy of Dialysis', 'Nutrition', 'Osteodystrophy', 'Anemia' and 'Diabetes' based on last value of month; b) BP's and #L processed are average of all values for month; c) Access data takes last access of month; d) Values for SGA and 'Infection Control' use most recent result.

IV. ACCESS - CONT.

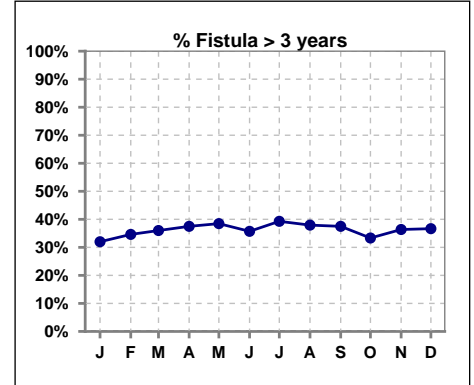
Catheters > 90 days

	Jan	Feb	Mar	Apr	May	Jun	Jul	Aug	Sep	Oct	Nov	Dec
# Access	32	32	30	29	36	37	40	42	43	42	42	40
# Catheters	2	2	2	2	2	2	4	7	5	5	5	6
% Catheters	6%	6%	7%	7%	6%	5%	10%	17%	12%	12%	12%	15%

Definition: Catheter in use on last treatment of the month



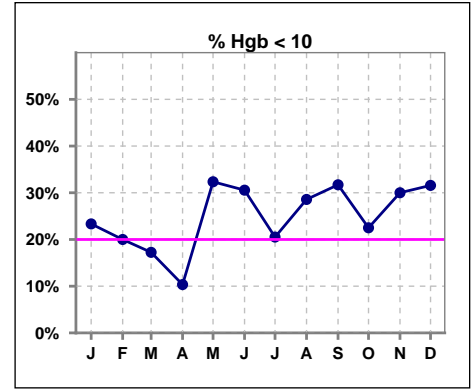
	Jan	Feb	Mar	Apr	May	Jun	Jul	Aug	Sep	Oct	Nov	Dec
# Fistula	25	26	25	24	26	28	28	29	32	33	33	30
# Fistula > 3 yrs	8	9	9	9	10	10	11	11	12	11	12	11
% Fistula > 3 yrs	32%	35%	36%	38%	38%	36%	39%	38%	38%	33%	36%	37%



V. ANEMIA

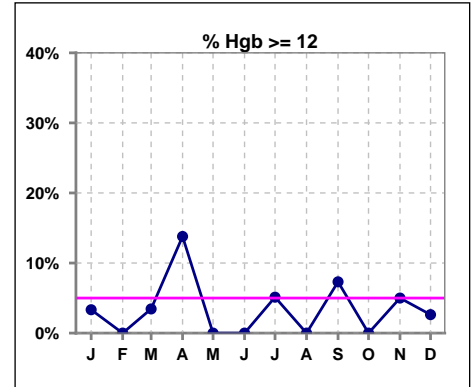
	Jan	Feb	Mar	Apr	May	Jun	Jul	Aug	Sep	Oct	Nov	Dec
# Hgb	30	30	29	29	34	36	39	35	41	40	40	38
# Hgb < 10	7	6	5	3	11	11	8	10	13	9	12	12
Pop. Mean	10.6	10.8	10.8	10.8	10.3	10.3	10.6	10.4	10.4	10.4	10.5	10.4
Std. Deviation	1.0	0.9	1.0	1.0	1.2	1.0	1.0	0.9	1.1	1.0	1.3	1.1
% Hgb < 10	23%	20%	17%	10%	32%	31%	21%	29%	32%	23%	30%	32%

Note: Excludes patients who received no ESA in month.



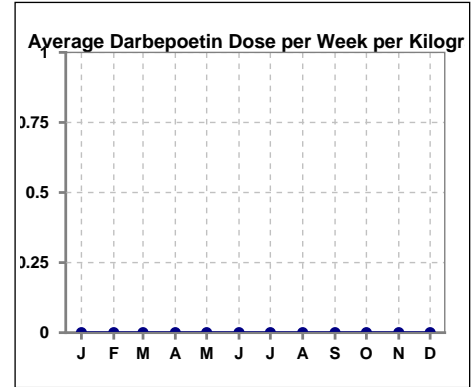
	Jan	Feb	Mar	Apr	May	Jun	Jul	Aug	Sep	Oct	Nov	Dec
# Hgb	30	30	29	29	34	36	39	35	41	40	40	38
# Hgb >= 12	1	0	1	4	0	0	2	0	3	0	2	1
Pop. Mean	10.6	10.8	10.8	10.8	10.3	10.3	10.6	10.4	10.4	10.4	10.5	10.4
Std. Deviation	1.0	0.9	1.0	1.0	1.2	1.0	1.0	0.9	1.1	1.0	1.3	1.1
% Hgb >= 12	3%	0%	3%	14%	0%	0%	5%	0%	7%	0%	5%	3%

Note: Excludes patients who received no ESA in month.



Average Darbepoetin Dose per Week per Kilogram

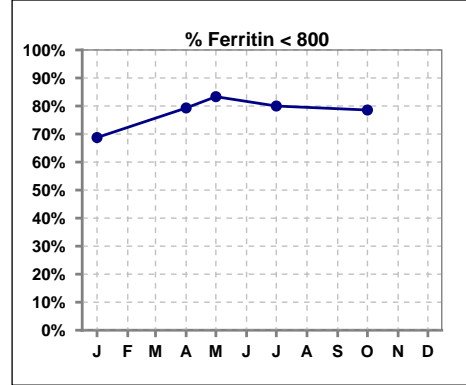
	Jan	Feb	Mar	Apr	May	Jun	Jul	Aug	Sep	Oct	Nov	Dec
# Average Darbepoetin	0	0	0	0	0	0	0	0	0	0	0	0



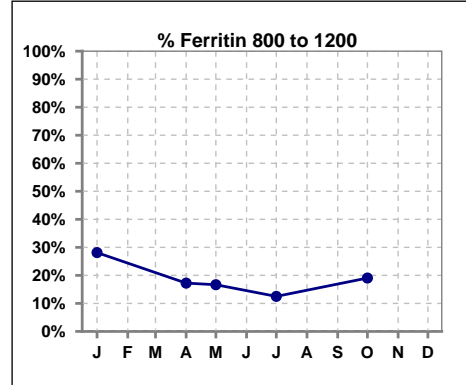
V. ANEMIA - CONT.

Iron Profile

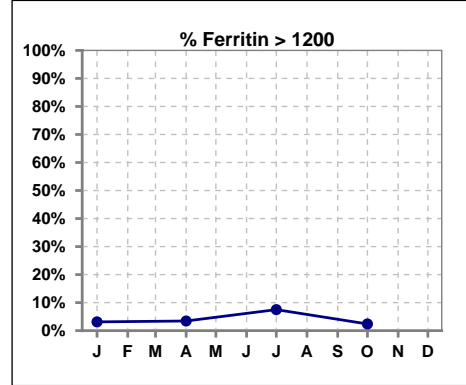
	Jan	Feb	Mar	Apr	May	Jun	Jul	Aug	Sep	Oct	Nov	Dec
# Ferritin	32			29	6		40			42		
# Ferritin < 800	22			23	5		32			33		
Pop. Mean	552			530	307		516			518		
Std. Deviation	360			279	405		374			342		
% Ferritin < 800	69%			79%	83%		80%			79%		



	Jan	Feb	Mar	Apr	May	Jun	Jul	Aug	Sep	Oct	Nov	Dec
# Ferritin	32			29	6		40			42		
# Ferritin 800 to 1200	9			5	1		5			8		
Pop. Mean	552			530	307		516			518		
Std. Deviation	360			279	405		374			342		
% Ferritin 800 to 1200	28%			17%	17%		13%			19%		

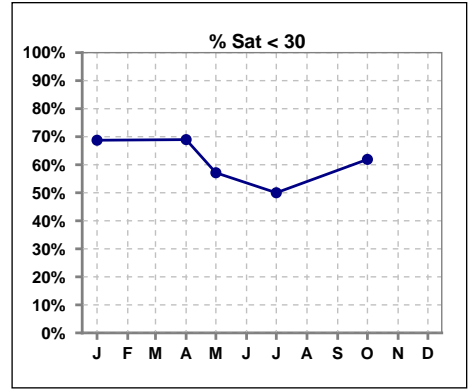


	Jan	Feb	Mar	Apr	May	Jun	Jul	Aug	Sep	Oct	Nov	Dec
# Ferritin	32			29	6		40			42		
# Ferritin > 1200	1			1			3			1		
Pop. Mean	552			530	307		516			518		
Std. Deviation	360			279	405		374			342		
% Ferritin > 1200	3%			3%			8%			2%		

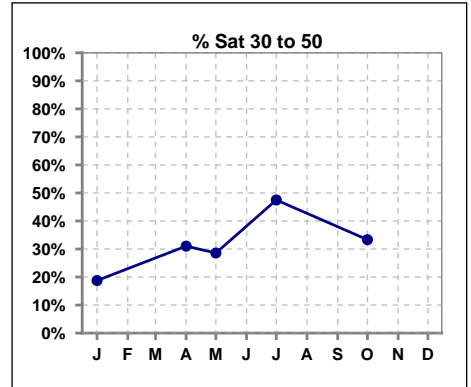


V. ANEMIA - CONT.

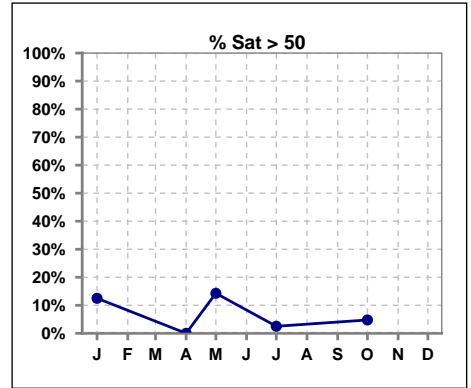
	Jan	Feb	Mar	Apr	May	Jun	Jul	Aug	Sep	Oct	Nov	Dec
# % Sat	32			29	7		40			42		
# % Sat < 30	22			20	4		20			26		
Pop. Mean	30			28	31		29			28		
Std. Deviation	21			10	21		11			11		
% % Sat < 30	69%			69%	57%		50%			62%		



	Jan	Feb	Mar	Apr	May	Jun	Jul	Aug	Sep	Oct	Nov	Dec
# % Sat	32			29	7		40			42		
# % Sat 30 to 50	6			9	2		19			14		
Pop. Mean	30			28	31		29			28		
Std. Deviation	21			10	21		11			11		
% % Sat 30 to 50	19%			31%	29%		48%			33%		

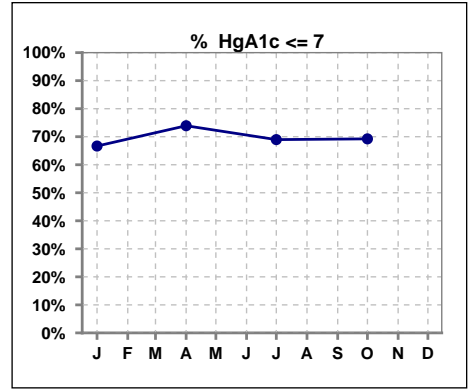


	Jan	Feb	Mar	Apr	May	Jun	Jul	Aug	Sep	Oct	Nov	Dec
# % Sat	32			29	7		40			42		
# % Sat > 50	4			0	1		1			2		
Pop. Mean	30			28	31		29			28		
Std. Deviation	21			10	21		11			11		
% % Sat > 50	13%			0%	14%		3%			5%		



VI. Diabetes

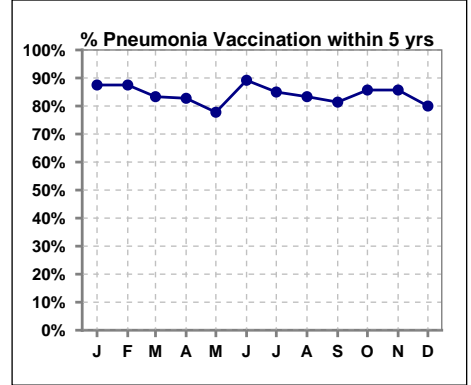
	Jan	Feb	Mar	Apr	May	Jun	Jul	Aug	Sep	Oct	Nov	Dec
# HgA1c	24			23			29			26		
# HgA1c <= 7	16			17			20			18		
Pop. Mean	6.9			6.6			6.6			6.6		
Std. Deviation	1.88			2.09			1.65			1.72		
% HgA1c <= 7	67%			74%			69%			69%		



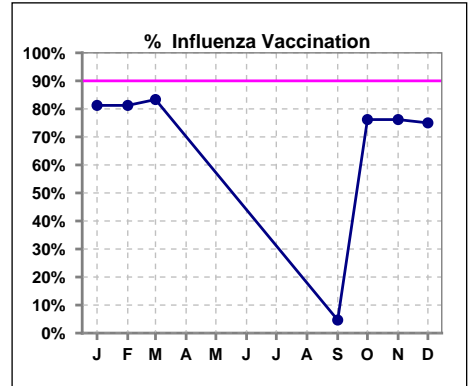
VII. Infection Control

Pneumonia vaccination within the past five years

	Jan	Feb	Mar	Apr	May	Jun	Jul	Aug	Sep	Oct	Nov	Dec
# Patient	32	32	30	29	36	37	40	42	43	42	42	40
# Pneumonia	28	28	25	24	28	33	34	35	35	36	36	32
% Pneumonia	88%	88%	83%	83%	78%	89%	85%	83%	81%	86%	86%	80%



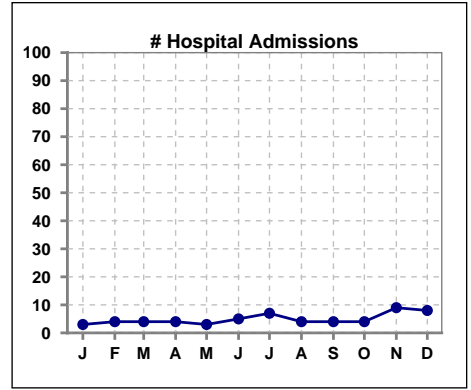
	Jan	Feb	Mar	Apr	May	Jun	Jul	Aug	Sep	Oct	Nov	Dec
# Patient	32	32	30						43	42	42	40
# Influenza	26	26	25						2	32	32	30
% Influenza	81%	81%	83%						5%	76%	76%	75%



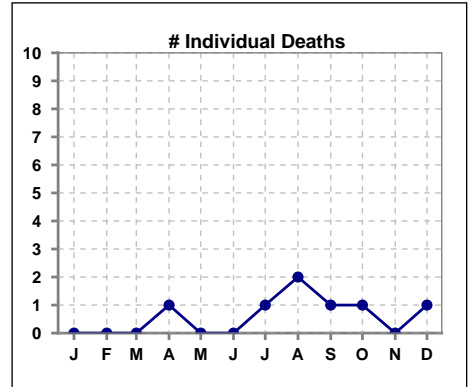
Methodology: a) All labs for 'Adequacy of Dialysis', 'Nutrition', 'Osteodystrophy', 'Anemia' and 'Diabetes' based on last value of month; b) BP's and #L processed are average of all values for month; c) Access data takes last access of month; d) Values for SGA and 'Infection Control' use most recent result.

VIII. Outcome measures

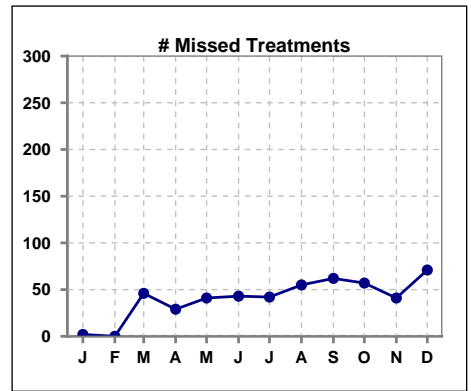
	Jan	Feb	Mar	Apr	May	Jun	Jul	Aug	Sep	Oct	Nov	Dec
# Patient	32	32	30	29	36	37	40	42	43	42	42	40
# Hospital Admissions	3	4	4	4	3	5	7	4	4	4	9	8



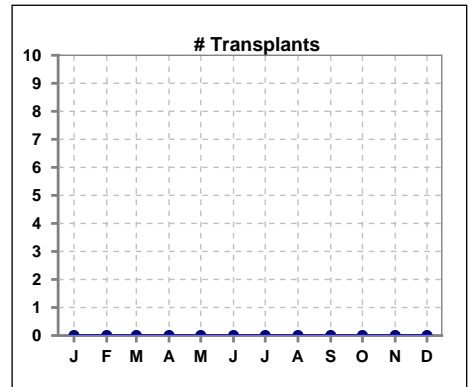
	Jan	Feb	Mar	Apr	May	Jun	Jul	Aug	Sep	Oct	Nov	Dec
# Patient	32	32	30	29	36	37	40	42	43	42	42	40
# Individual Deaths	0	0	0	1	0	0	1	2	1	1	0	1



	Jan	Feb	Mar	Apr	May	Jun	Jul	Aug	Sep	Oct	Nov	Dec
# Patient	32	32	30	29	36	37	40	42	43	42	42	40
# Missed Treatments	2	0	46	29	41	43	42	55	62	57	41	71



	Jan	Feb	Mar	Apr	May	Jun	Jul	Aug	Sep	Oct	Nov	Dec
# Patient	32	32	30	29	36	37	40	42	43	42	42	40
# Transplants	0	0	0	0	0	0	0	0	0	0	0	0



Methodology: a) All labs for 'Adequacy of Dialysis', 'Nutrition', 'Osteodystrophy', 'Anemia' and 'Diabetes' based on last value of month; b) BP's and #L processed are average of all values for month; c) Access data takes last access of month; d) Values for SGA and 'Infection Control' use most recent result.