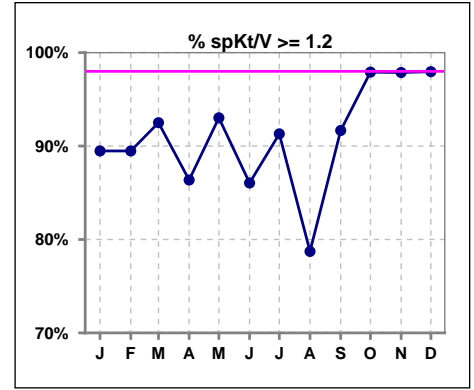
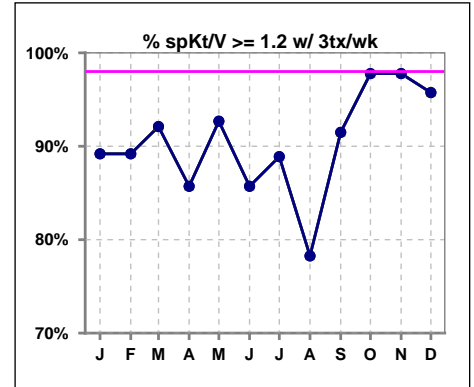


**I. ADEQUACY OF DIALYSIS**

	Jan	Feb	Mar	Apr	May	Jun	Jul	Aug	Sep	Oct	Nov	Dec
# spKt/V	38	38	40	44	43	43	46	47	48	48	47	49
# spKt/V >= 1.2	34	34	37	38	40	37	42	37	44	47	46	48
Pop. Mean	1.50	1.51	1.52	1.47	1.55	1.45	1.48	1.44	1.52	1.56	1.64	1.54
Std. Deviation	0.37	0.34	0.35	0.35	0.46	0.35	0.34	0.35	0.34	0.31	0.34	0.34
% spKt/V >= 1.2	89%	89%	93%	86%	93%	86%	91%	79%	92%	98%	98%	98%



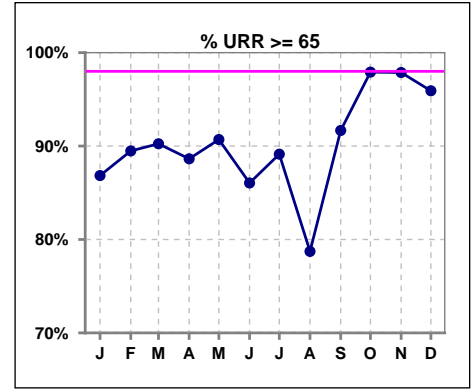
	Jan	Feb	Mar	Apr	May	Jun	Jul	Aug	Sep	Oct	Nov	Dec
# spKt/V w/ 3tx/wk	37	37	38	42	41	42	45	46	47	45	45	47
# spKt/V >=1.2 w/3tx/wk	33	33	35	36	38	36	40	36	43	44	44	45
Pop. Mean	1.50	1.51	1.50	1.47	1.55	1.45	1.48	1.43	1.52	1.56	1.65	1.54
Std. Deviation	0.38	0.34	0.33	0.36	0.47	0.35	0.34	0.35	0.35	0.32	0.33	0.34
% >=1.2 w/3tx/wk	89%	89%	92%	86%	93%	86%	89%	78%	91%	98%	98%	96%



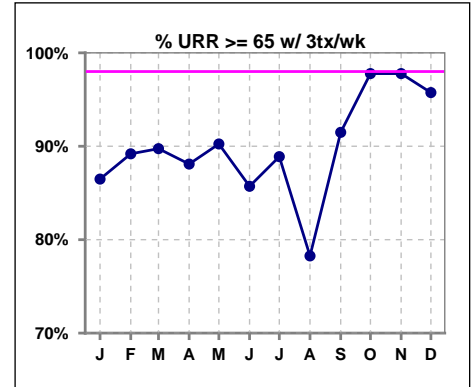
Methodology: a) All labs for 'Adequacy of Dialysis', 'Nutrition', 'Osteodystrophy', 'Anemia' and 'Diabetes' based on last value of month; b) BP's and #L processed are average of all values for month; c) Access data takes last access of month; d) Values for SGA and 'Infection Control' use most recent result.

**I. ADEQUACY OF DIALYSIS - CONT.**

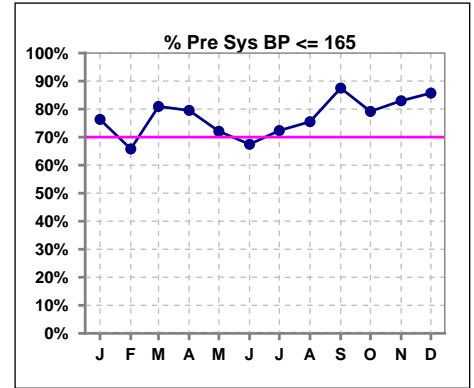
	Jan	Feb	Mar	Apr	May	Jun	Jul	Aug	Sep	Oct	Nov	Dec
# URR	38	38	41	44	43	43	46	47	48	48	47	49
# URR >= 65	33	34	37	39	39	37	41	37	44	47	46	47
Pop. Mean	71	72	72	71	72	70	71	70	72	73	75	73
Std. Deviation	9.80	7.78	7.69	9.25	8.75	9.23	8.31	8.52	7.49	6.95	6.21	6.60
% URR >= 65	87%	89%	90%	89%	91%	86%	89%	79%	92%	98%	98%	96%



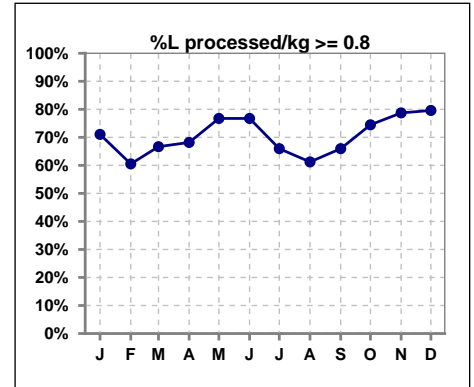
	Jan	Feb	Mar	Apr	May	Jun	Jul	Aug	Sep	Oct	Nov	Dec
# URR w/ 3tx/wk	37	37	39	42	41	42	45	46	47	45	45	47
# URR>=65 w/ 3tx/wk	32	33	35	37	37	36	40	36	43	44	44	45
Pop. Mean	71	72	71	71	72	70	71	70	72	73	75	73
Std. Deviation	9.94	7.88	7.53	9.46	8.88	9.32	8.38	8.55	7.54	7.09	6.18	6.72
% URR>=65 w/ 3tx/wk	86%	89%	90%	88%	90%	86%	89%	78%	91%	98%	98%	96%



	Jan	Feb	Mar	Apr	May	Jun	Jul	Aug	Sep	Oct	Nov	Dec
# Pre Sys BP	38	38	42	44	43	43	47	49	48	48	47	49
# Pre Sys BP <= 165	30	25	34	35	31	29	34	38	42	38	39	43
Pop. Mean	151	155	152	152	153	154	150	151	149	150	150	147
Std. Deviation	19.7	20.5	19.5	20.2	19.0	23.4	22.9	18.1	14.9	19.1	18.8	16.9
%Pre Sys BP <=165	76%	66%	81%	80%	72%	67%	72%	76%	88%	79%	83%	86%



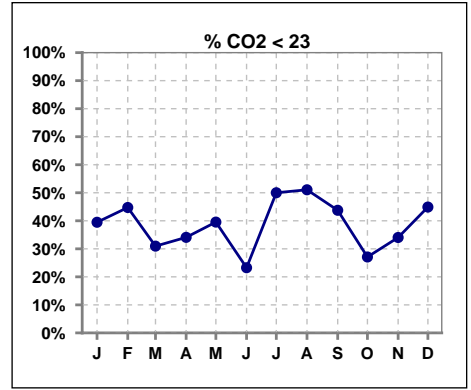
	Jan	Feb	Mar	Apr	May	Jun	Jul	Aug	Sep	Oct	Nov	Dec
# L processed/kg	38	38	42	44	43	43	47	49	47	47	47	49
# L processed/kg>=0.8	27	23	28	30	33	33	31	30	31	35	37	39
Pop. Mean	1	1	1	1	1	1	1	1	1	1	1	1
Std. Deviation	0.3	0.3	0.3	0.3	0.3	0.3	0.3	0.3	0.3	0.3	0.3	0.3
% L processed/kg>=0.8	71%	61%	67%	68%	77%	77%	66%	61%	66%	74%	79%	80%



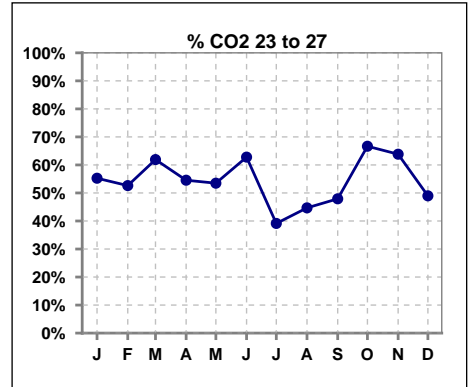
Methodology: a) All labs for 'Adequacy of Dialysis', 'Nutrition', 'Osteodystrophy', 'Anemia' and 'Diabetes' based on last value of month; b) BP's and #L processed are average of all values for month; c) Access data takes last access of month; d) Values for SGA and 'Infection Control' use most recent result.

**I. ADEQUACY OF DIALYSIS - CONT.**

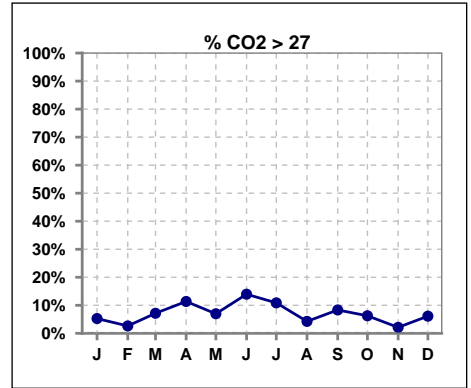
	Jan	Feb	Mar	Apr	May	Jun	Jul	Aug	Sep	Oct	Nov	Dec
# CO2	38	38	42	44	43	43	46	47	48	48	47	49
# CO2 < 23	15	17	13	15	17	10	23	24	21	13	16	22
Pop. Mean	23	23	24	23	24	24	23	23	23	24	23	23
Std. Deviation	3.06	2.74	2.71	2.98	3.20	3.19	3.28	3.34	3.14	2.42	2.45	2.71
% CO2 < 23	39%	45%	31%	34%	40%	23%	50%	51%	44%	27%	34%	45%



	Jan	Feb	Mar	Apr	May	Jun	Jul	Aug	Sep	Oct	Nov	Dec
# CO2	38	38	42	44	43	43	46	47	48	48	47	49
# CO2 23 to 27	21	20	26	24	23	27	18	21	23	32	30	24
Pop. Mean	23	23	24	23	24	24	23	23	23	24	23	23
Std. Deviation	3.06	2.74	2.71	2.98	3.20	3.19	3.28	3.34	3.14	2.42	2.45	2.71
% CO2 23 to 27	55%	53%	62%	55%	53%	63%	39%	45%	48%	67%	64%	49%



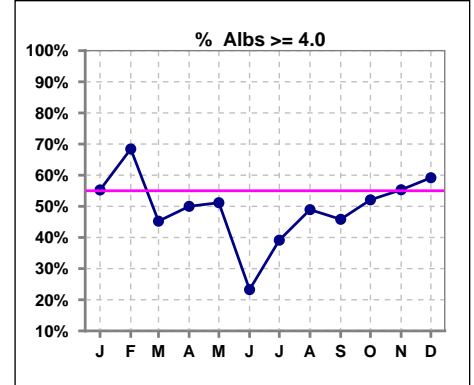
	Jan	Feb	Mar	Apr	May	Jun	Jul	Aug	Sep	Oct	Nov	Dec
# CO2	38	38	42	44	43	43	46	47	48	48	47	49
# CO2 > 27	2	1	3	5	3	6	5	2	4	3	1	3
Pop. Mean	23	23	24	23	24	24	23	23	23	24	23	23
Std. Deviation	3.06	2.74	2.71	2.98	3.20	3.19	3.28	3.34	3.14	2.42	2.45	2.71
% CO2 > 27	5%	3%	7%	11%	7%	14%	11%	4%	8%	6%	2%	6%



\*Albumin values use BCG method - as of July 2001

**II. NUTRITION**

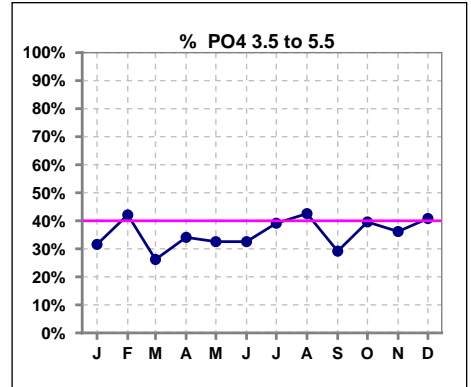
	Jan	Feb	Mar	Apr	May	Jun	Jul	Aug	Sep	Oct	Nov	Dec
# Albumin	38	38	42	44	43	43	46	47	48	48	47	49
# Albumin >= 4.0	21	26	19	22	22	10	18	23	22	25	26	29
Pop. Mean	3.8	3.9	3.8	3.8	3.8	3.7	3.8	3.8	3.9	3.9	3.9	3.9
Std. Deviation	0.42	0.42	0.51	0.50	0.49	0.45	0.39	0.41	0.32	0.33	0.34	0.42
% Alb >= 4.0	55%	68%	45%	50%	51%	23%	39%	49%	46%	52%	55%	59%



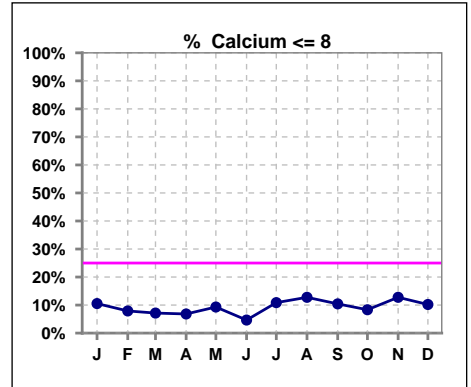
Lab methodology for PTH changed January 2012

**III. OSTEODYSTROPHY**

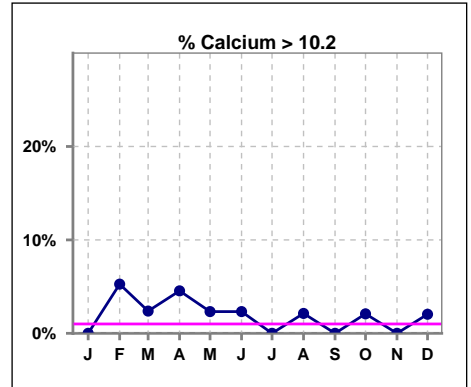
	Jan	Feb	Mar	Apr	May	Jun	Jul	Aug	Sep	Oct	Nov	Dec
# PO4	38	38	42	44	43	43	46	47	48	48	47	49
# PO4 3.5 to 5.5	12	16	11	15	14	14	18	20	14	19	17	20
Pop. Mean	6.5	6.5	6.4	6.3	6.6	6.4	6.1	6.2	6.1	5.9	6.0	6.1
Std. Deviation	1.91	2.80	1.96	2.07	1.69	2.05	1.76	1.88	1.89	1.55	1.40	1.93
% PO4 3.5 to 5.5	32%	42%	26%	34%	33%	33%	39%	43%	29%	40%	36%	41%



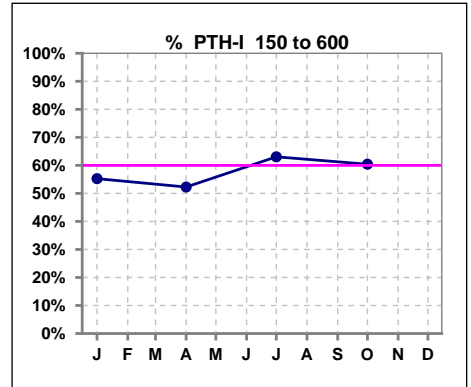
	Jan	Feb	Mar	Apr	May	Jun	Jul	Aug	Sep	Oct	Nov	Dec
# Calcium	38	38	42	44	43	43	46	47	48	48	47	49
# Calcium <= 8	4	3	3	3	4	2	5	6	5	4	6	5
Pop. Mean	9.1	9.3	9.2	9.2	9.0	9.2	9.1	9.1	9.0	9.1	9.2	9.0
Std. Deviation	0.76	0.84	0.73	0.78	0.73	0.76	0.72	0.72	0.71	0.66	0.80	0.72
% Calcium <= 8	11%	8%	7%	7%	9%	5%	11%	13%	10%	8%	13%	10%



	Jan	Feb	Mar	Apr	May	Jun	Jul	Aug	Sep	Oct	Nov	Dec
# Calcium	38	38	42	44	43	43	46	47	48	48	47	49
# Calcium > 10.2	0	2	1	2	1	1	0	1	0	1	0	1
Pop. Mean	9.1	9.3	9.2	9.2	9.0	9.2	9.1	9.1	9.0	9.1	9.2	9.0
Std. Deviation	0.76	0.84	0.73	0.78	0.73	0.76	0.72	0.72	0.71	0.66	0.80	0.72
% Calcium > 10.2	0%	5%	2%	5%	2%	2%	0%	2%	0%	2%	0%	2%



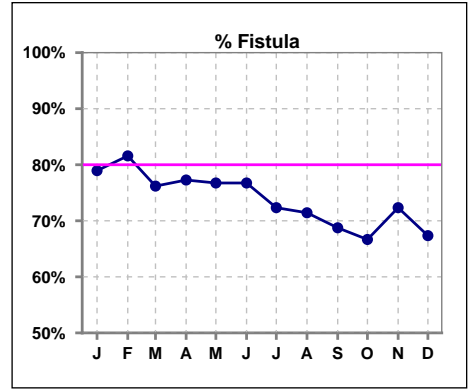
	Jan	Feb	Mar	Apr	May	Jun	Jul	Aug	Sep	Oct	Nov	Dec
# PTH-I	38			44			46			48		
# PTH-I 150 to 600	21			23			29			29		
Pop. Mean	605			577			556			487		
Std. Deviation	416			485			531			339		
% PTH-I 150 to 600	55%			52%			63%			60%		



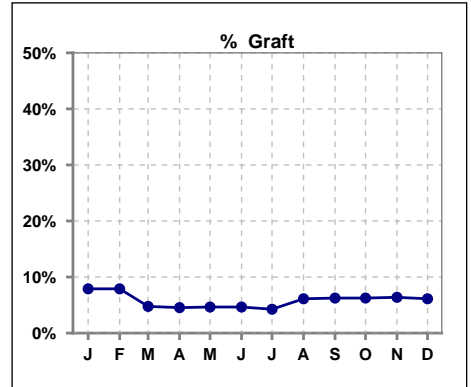
Methodology: a) All labs for 'Adequacy of Dialysis', 'Nutrition', 'Osteodystrophy', 'Anemia' and 'Diabetes' based on last value of month; b) BP's and #L processed are average of all values for month; c) Access data takes last access of month; d) Values for SGA and 'Infection Control' use most recent result.

**IV. ACCESS**

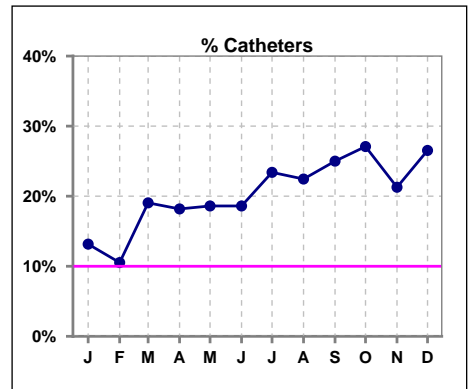
	Jan	Feb	Mar	Apr	May	Jun	Jul	Aug	Sep	Oct	Nov	Dec
# Access	38	38	42	44	43	43	47	49	48	48	47	49
# Fistula	30	31	32	34	33	33	34	35	33	32	34	33
% Fistula	79%	82%	76%	77%	77%	77%	72%	71%	69%	67%	72%	67%



	Jan	Feb	Mar	Apr	May	Jun	Jul	Aug	Sep	Oct	Nov	Dec
# Access	38	38	42	44	43	43	47	49	48	48	47	49
# Graft	3	3	2	2	2	2	2	3	3	3	3	3
% Graft	8%	8%	5%	5%	5%	5%	4%	6%	6%	6%	6%	6%



	Jan	Feb	Mar	Apr	May	Jun	Jul	Aug	Sep	Oct	Nov	Dec
# Access	38	38	42	44	43	43	47	49	48	48	47	49
# Catheters	5	4	8	8	8	8	11	11	12	13	10	13
% Catheters	13%	11%	19%	18%	19%	19%	23%	22%	25%	27%	21%	27%



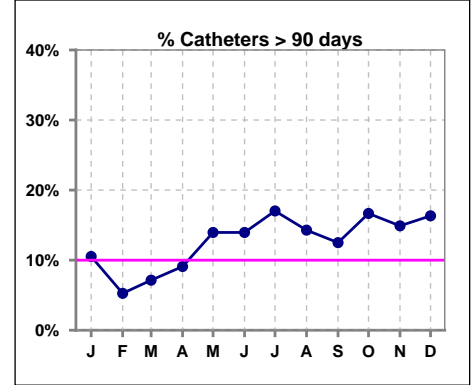
Methodology: a) All labs for 'Adequacy of Dialysis', 'Nutrition', 'Osteodystrophy', 'Anemia' and 'Diabetes' based on last value of month; b) BP's and #L processed are average of all values for month; c) Access data takes last access of month; d) Values for SGA and 'Infection Control' use most recent result.

**IV. ACCESS - CONT.**

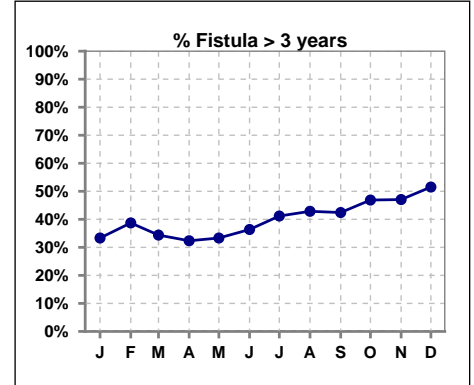
**Catheters > 90 days**

	Jan	Feb	Mar	Apr	May	Jun	Jul	Aug	Sep	Oct	Nov	Dec
<b># Access</b>	38	38	42	44	43	43	47	49	48	48	47	49
<b># Catheters</b>	4	2	3	4	6	6	8	7	6	8	7	8
<b>% Catheters</b>	11%	5%	7%	9%	14%	14%	17%	14%	13%	17%	15%	16%

**Definition:** Catheter in use on last treatment of the month



	Jan	Feb	Mar	Apr	May	Jun	Jul	Aug	Sep	Oct	Nov	Dec
<b># Fistula</b>	30	31	32	34	33	33	34	35	33	32	34	33
<b># Fistula &gt; 3 yrs</b>	10	12	11	11	11	12	14	15	14	15	16	17
<b>% Fistula &gt; 3 yrs</b>	33%	39%	34%	32%	33%	36%	41%	43%	42%	47%	47%	52%

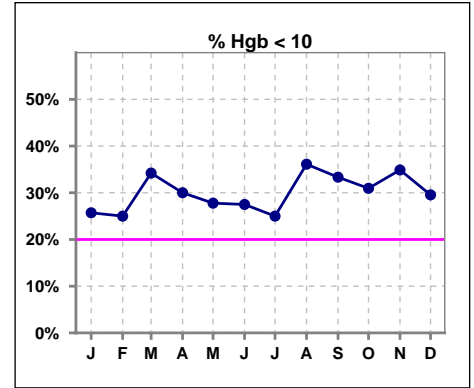


**Methodology:** a) All labs for 'Adequacy of Dialysis', 'Nutrition', 'Osteodystrophy', 'Anemia' and 'Diabetes' based on last value of month; b) BP's and #L processed are average of all values for month; c) Access data takes last access of month; d) Values for SGA and 'Infection Control' use most recent result.

**V. ANEMIA**

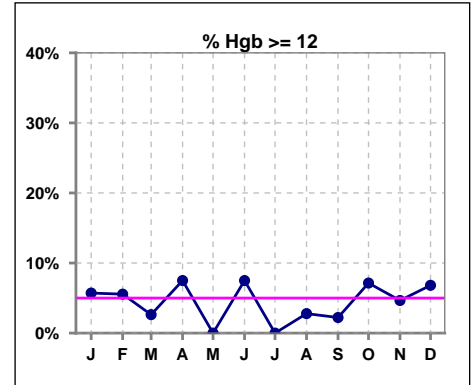
	Jan	Feb	Mar	Apr	May	Jun	Jul	Aug	Sep	Oct	Nov	Dec
# Hgb	35	36	38	40	36	40	44	36	45	42	43	44
# Hgb < 10	9	9	13	12	10	11	11	13	15	13	15	13
Pop. Mean	10.5	10.6	10.2	10.3	10.5	10.6	10.4	10.3	10.3	10.4	10.4	10.6
Std. Deviation	1.2	1.1	1.3	1.5	1.0	1.2	1.2	1.3	1.3	1.4	1.1	1.2
% Hgb < 10	26%	25%	34%	30%	28%	28%	25%	36%	33%	31%	35%	30%

Note: Excludes patients who received no ESA in month.



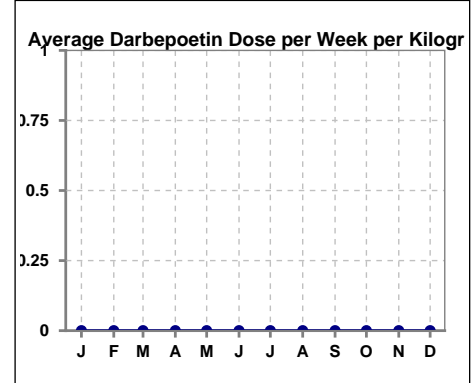
	Jan	Feb	Mar	Apr	May	Jun	Jul	Aug	Sep	Oct	Nov	Dec
# Hgb	35	36	38	40	36	40	44	36	45	42	43	44
# Hgb >= 12	2	2	1	3	0	3	0	1	1	3	2	3
Pop. Mean	10.5	10.6	10.2	10.3	10.5	10.6	10.4	10.3	10.3	10.4	10.4	10.6
Std. Deviation	1.2	1.1	1.3	1.5	1.0	1.2	1.2	1.3	1.3	1.4	1.1	1.2
% Hgb >= 12	6%	6%	3%	8%	0%	8%	0%	3%	2%	7%	5%	7%

Note: Excludes patients who received no ESA in month.



**Average Darbepoetin Dose per Week per Kilogram**

	Jan	Feb	Mar	Apr	May	Jun	Jul	Aug	Sep	Oct	Nov	Dec
# Average Darbepoetin	0	0	0	0	0	0	0	0	0	0	0	0

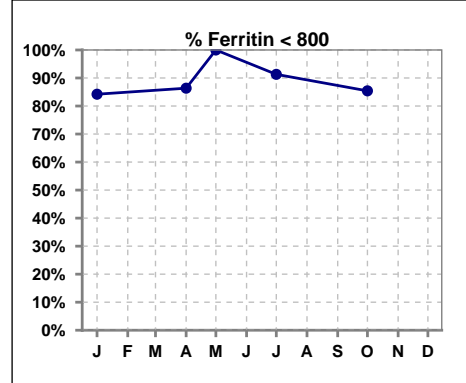




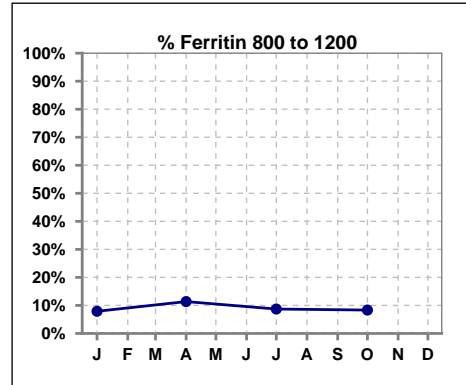
**V. ANEMIA - CONT.**

**Iron Profile**

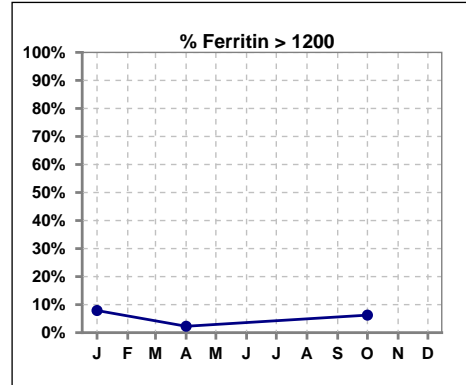
	Jan	Feb	Mar	Apr	May	Jun	Jul	Aug	Sep	Oct	Nov	Dec
# Ferritin	38			44	2		46			48		
# Ferritin < 800	32			38	2		42			41		
Pop. Mean	522			464	352		415			502		
Std. Deviation	348			315	328		266			317		
<b>% Ferritin &lt; 800</b>	<b>84%</b>			<b>86%</b>	<b>100%</b>		<b>91%</b>			<b>85%</b>		



	Jan	Feb	Mar	Apr	May	Jun	Jul	Aug	Sep	Oct	Nov	Dec
# Ferritin	38			44	2		46			48		
# Ferritin 800 to 1200	3			5			4			4		
Pop. Mean	522			464	352		415			502		
Std. Deviation	348			315	328		266			317		
<b>% Ferritin 800 to 1200</b>	<b>8%</b>			<b>11%</b>			<b>9%</b>			<b>8%</b>		

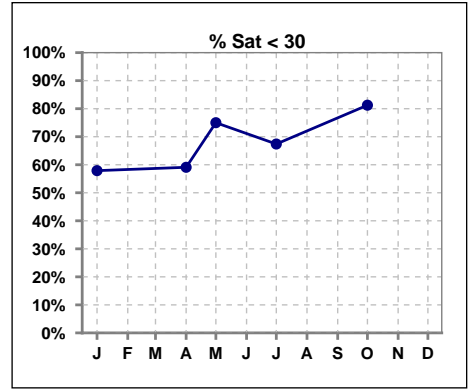


	Jan	Feb	Mar	Apr	May	Jun	Jul	Aug	Sep	Oct	Nov	Dec
# Ferritin	38			44	2		46			48		
# Ferritin > 1200	3			1						3		
Pop. Mean	522			464	352		415			502		
Std. Deviation	348			315	328		266			317		
<b>% Ferritin &gt; 1200</b>	<b>8%</b>			<b>2%</b>						<b>6%</b>		

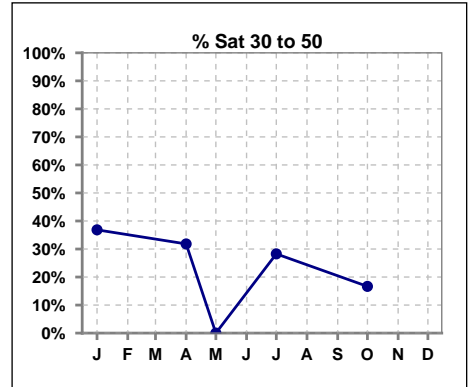


**V. ANEMIA - CONT.**

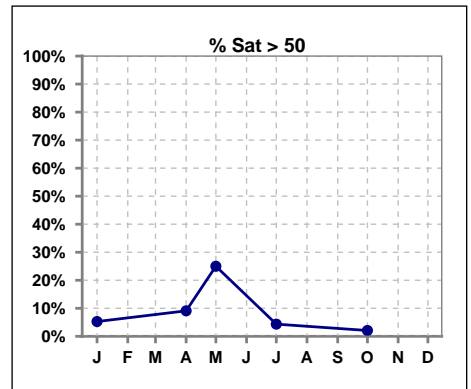
	Jan	Feb	Mar	Apr	May	Jun	Jul	Aug	Sep	Oct	Nov	Dec
# % Sat	38			44	4		46			48		
# % Sat < 30	22			26	3		31			39		
Pop. Mean	30			30	40		27			23		
Std. Deviation	18			18	37		14			11		
<b>% % Sat &lt; 30</b>	<b>58%</b>			<b>59%</b>	<b>75%</b>		<b>67%</b>			<b>81%</b>		



	Jan	Feb	Mar	Apr	May	Jun	Jul	Aug	Sep	Oct	Nov	Dec
# % Sat	38			44	4		46			48		
# % Sat 30 to 50	14			14	0		13			8		
Pop. Mean	30			30	40		27			23		
Std. Deviation	18			18	37		14			11		
<b>% % Sat 30 to 50</b>	<b>37%</b>			<b>32%</b>	<b>0%</b>		<b>28%</b>			<b>17%</b>		

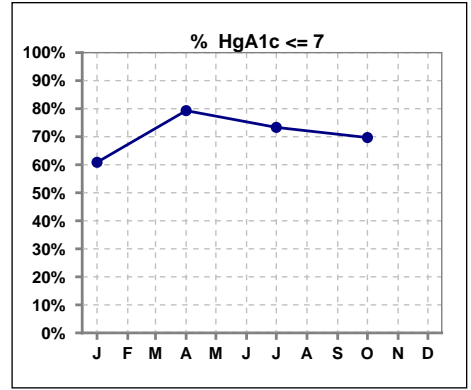


	Jan	Feb	Mar	Apr	May	Jun	Jul	Aug	Sep	Oct	Nov	Dec
# % Sat	38			44	4		46			48		
# % Sat > 50	2			4	1		2			1		
Pop. Mean	30			30	40		27			23		
Std. Deviation	18			18	37		14			11		
<b>% % Sat &gt; 50</b>	<b>5%</b>			<b>9%</b>	<b>25%</b>		<b>4%</b>			<b>2%</b>		



**VI. Diabetes**

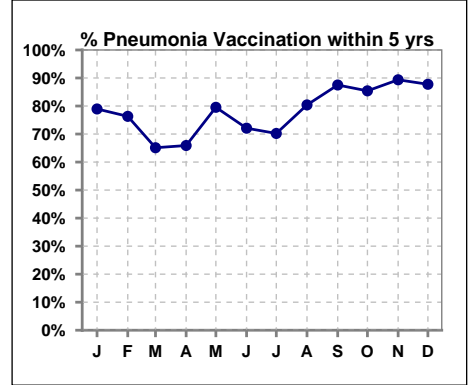
	Jan	Feb	Mar	Apr	May	Jun	Jul	Aug	Sep	Oct	Nov	Dec
# HgA1c	23			29			30			33		
# HgA1c <= 7	14			23			22			23		
Pop. Mean	6.8			6.3			6.3			6.4		
Std. Deviation	1.28			1.82			1.62			2.19		
<b>% HgA1c &lt;= 7</b>	<b>61%</b>			<b>79%</b>			<b>73%</b>			<b>70%</b>		



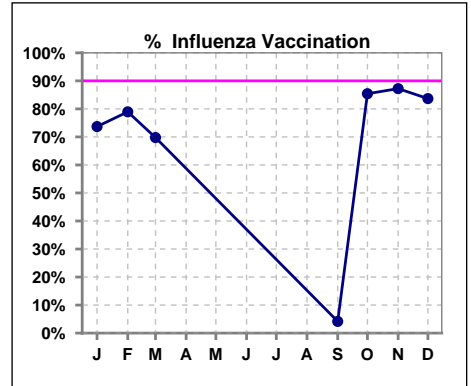
**VII. Infection Control**

**Pneumonia vaccination within the past five years**

	Jan	Feb	Mar	Apr	May	Jun	Jul	Aug	Sep	Oct	Nov	Dec
# Patient	38	38	43	44	44	43	47	51	48	48	47	49
# Pneumonia	30	29	28	29	35	31	33	41	42	41	42	43
% Pneumonia	79%	76%	65%	66%	80%	72%	70%	80%	88%	85%	89%	88%



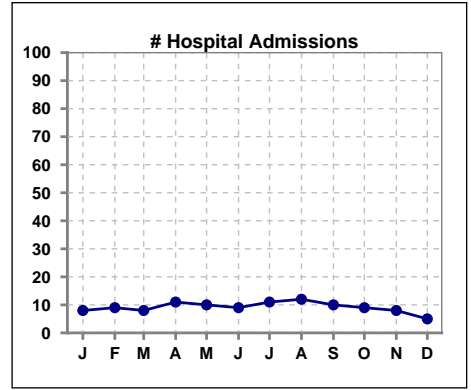
	Jan	Feb	Mar	Apr	May	Jun	Jul	Aug	Sep	Oct	Nov	Dec
# Patient	38	38	43						48	48	47	49
# Influenza	28	30	30						2	41	41	41
% Influenza	74%	79%	70%						4%	85%	87%	84%



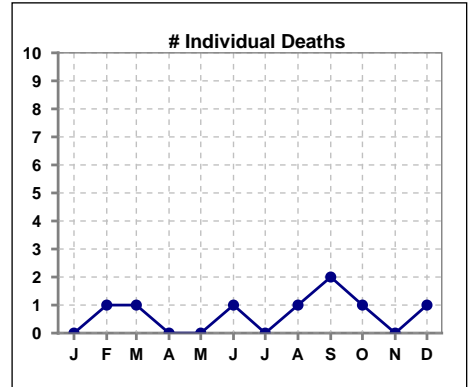
Methodology: a) All labs for 'Adequacy of Dialysis', 'Nutrition', 'Osteodystrophy', 'Anemia' and 'Diabetes' based on last value of month; b) BP's and #L processed are average of all values for month; c) Access data takes last access of month; d) Values for SGA and 'Infection Control' use most recent result.

**VIII. Outcome measures**

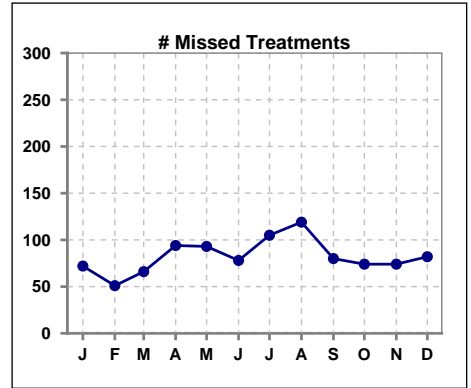
	Jan	Feb	Mar	Apr	May	Jun	Jul	Aug	Sep	Oct	Nov	Dec
<b># Patient</b>	38	38	43	44	44	43	47	51	48	48	47	49
<b># Hospital Admissions</b>	8	9	8	11	10	9	11	12	10	9	8	5



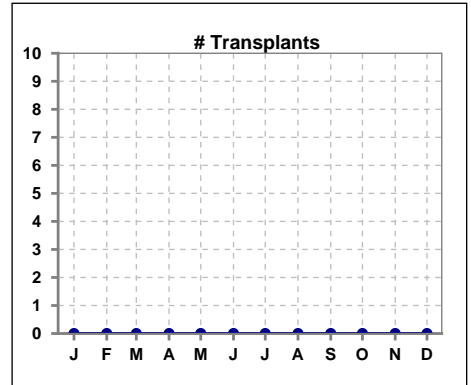
	Jan	Feb	Mar	Apr	May	Jun	Jul	Aug	Sep	Oct	Nov	Dec
<b># Patient</b>	38	38	43	44	44	43	47	51	48	48	47	49
<b># Individual Deaths</b>	0	1	1	0	0	1	0	1	2	1	0	1



	Jan	Feb	Mar	Apr	May	Jun	Jul	Aug	Sep	Oct	Nov	Dec
<b># Patient</b>	38	38	43	44	44	43	47	51	48	48	47	49
<b># Missed Treatments</b>	72	51	66	94	93	78	105	119	80	74	74	82



	Jan	Feb	Mar	Apr	May	Jun	Jul	Aug	Sep	Oct	Nov	Dec
<b># Patient</b>	38	38	43	44	44	43	47	51	48	48	47	49
<b># Transplants</b>	0	0	0	0	0	0	0	0	0	0	0	0



Methodology: a) All labs for 'Adequacy of Dialysis', 'Nutrition', 'Osteodystrophy', 'Anemia' and 'Diabetes' based on last value of month; b) BP's and #L processed are average of all values for month; c) Access data takes last access of month; d) Values for SGA and 'Infection Control' use most recent result.