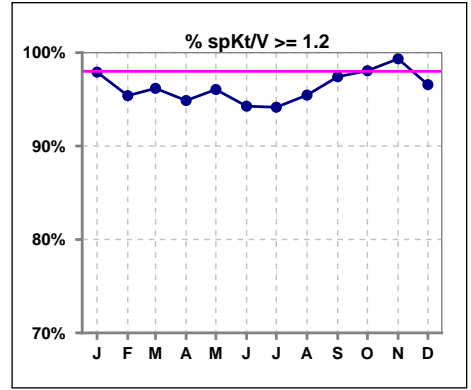
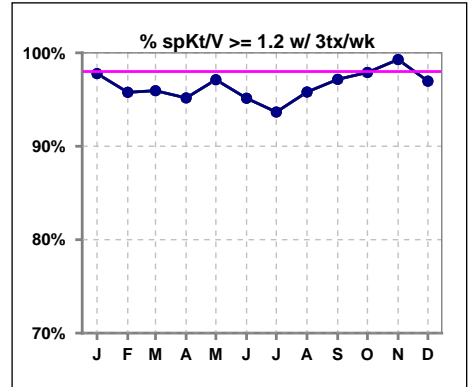


I. ADEQUACY OF DIALYSIS

	Jan	Feb	Mar	Apr	May	Jun	Jul	Aug	Sep	Oct	Nov	Dec
# spKt/V	144	152	157	156	152	157	154	154	155	155	152	146
# spKt/V >= 1.2	141	145	151	148	146	148	145	147	151	152	151	141
Pop. Mean	1.65	1.68	1.65	1.64	1.62	1.60	1.63	1.64	1.72	1.70	1.74	1.73
Std. Deviation	0.34	0.34	0.35	0.37	0.34	0.31	0.38	0.34	0.35	0.31	0.34	0.38
% spKt/V >= 1.2	98%	95%	96%	95%	96%	94%	94%	95%	97%	98%	99%	97%

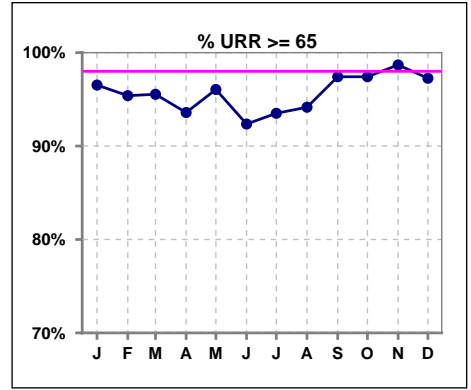


	Jan	Feb	Mar	Apr	May	Jun	Jul	Aug	Sep	Oct	Nov	Dec
# spKt/V w/ 3tx/wk	135	142	148	145	139	144	142	143	141	143	139	132
# spKt/V >= 1.2 w/3tx/wk	132	136	142	138	135	137	133	137	137	140	138	128
Pop. Mean	1.65	1.69	1.65	1.65	1.64	1.61	1.64	1.65	1.73	1.70	1.75	1.72
Std. Deviation	0.32	0.33	0.35	0.37	0.34	0.31	0.39	0.33	0.35	0.31	0.34	0.35
% >= 1.2 w/3tx/wk	98%	96%	96%	95%	97%	95%	94%	96%	97%	98%	99%	97%

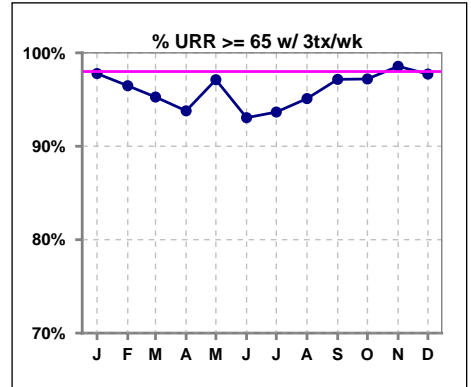


I. ADEQUACY OF DIALYSIS - CONT.

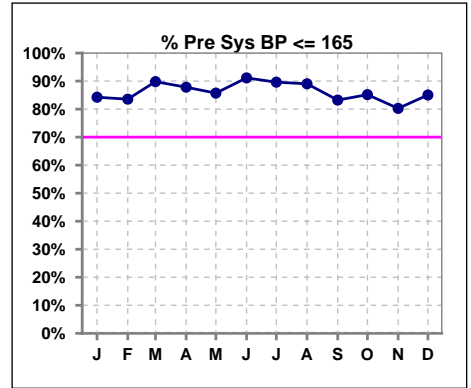
	Jan	Feb	Mar	Apr	May	Jun	Jul	Aug	Sep	Oct	Nov	Dec
# URR	144	152	157	156	152	157	154	154	155	155	152	146
# URR >= 65	139	145	150	146	146	145	144	145	151	151	150	142
Pop. Mean	75	76	75	75	75	74	74	75	76	76	77	77
Std. Deviation	6.49	7.13	7.32	7.34	6.86	6.68	7.69	7.01	6.79	5.78	6.21	6.35
% URR >= 65	97%	95%	96%	94%	96%	92%	94%	94%	97%	97%	99%	97%



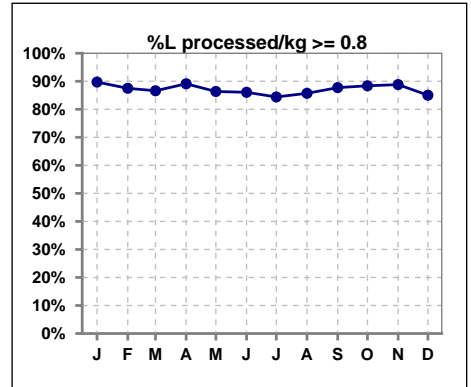
	Jan	Feb	Mar	Apr	May	Jun	Jul	Aug	Sep	Oct	Nov	Dec
# URR w/ 3tx/wk	135	142	148	145	139	144	142	143	141	143	139	132
# URR>=65 w/ 3tx/wk	132	137	141	136	135	134	133	136	137	139	137	129
Pop. Mean	75	76	75	75	75	74	75	75	77	76	77	76
Std. Deviation	6.26	6.51	7.39	6.99	6.69	6.75	7.68	6.77	6.94	5.74	6.19	6.01
% URR>=65 w/ 3tx/wk	98%	96%	95%	94%	97%	93%	94%	95%	97%	97%	99%	98%



	Jan	Feb	Mar	Apr	May	Jun	Jul	Aug	Sep	Oct	Nov	Dec
# Pre Sys BP	146	152	157	156	154	158	154	155	155	155	152	147
# Pre Sys BP <= 165	124	130	142	138	134	145	139	138	132	136	124	125
Pop. Mean	145	146	143	143	143	141	141	142	144	145	146	145
Std. Deviation	17.9	17.9	17.4	17.3	19.5	18.8	18.5	19.5	20.8	19.7	19.8	21.0
% Pre Sys BP <= 165	84%	84%	90%	88%	86%	91%	90%	89%	83%	85%	80%	85%



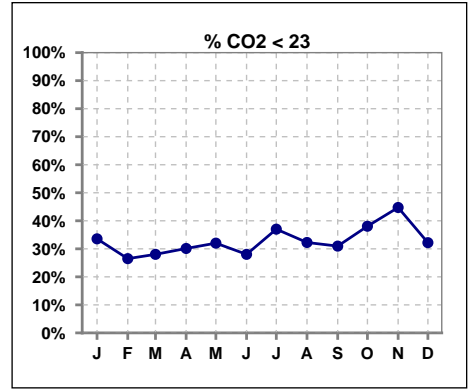
	Jan	Feb	Mar	Apr	May	Jun	Jul	Aug	Sep	Oct	Nov	Dec
# L processed/kg	146	152	157	156	154	158	154	154	155	155	152	147
# L processed/kg>=0.8	131	133	136	139	133	136	130	132	136	137	135	125
Pop. Mean	1	1	1	1	1	1	1	1	1	1	1	1
Std. Deviation	0.3	0.3	0.3	0.3	0.3	0.3	0.3	0.3	0.3	0.3	0.3	0.3
% L processed/kg>=0.8	90%	88%	87%	89%	86%	86%	84%	86%	88%	88%	89%	85%



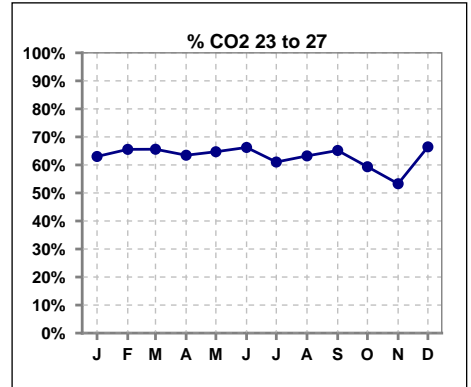
Methodology: a) All labs for 'Adequacy of Dialysis', 'Nutrition', 'Osteodystrophy', 'Anemia' and 'Diabetes' based on last value of month; b) BP's and #L processed are average of all values for month; c) Access data takes last access of month; d) Values for SGA and 'Infection Control' use most recent result.

I. ADEQUACY OF DIALYSIS - CONT.

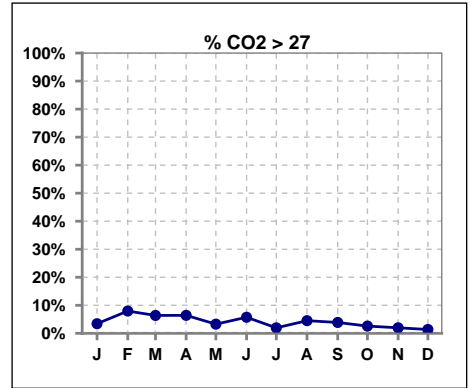
	Jan	Feb	Mar	Apr	May	Jun	Jul	Aug	Sep	Oct	Nov	Dec
# CO2	146	151	157	156	153	157	154	155	155	155	152	146
# CO2 < 23	49	40	44	47	49	44	57	50	48	59	68	47
Pop. Mean	23	24	24	24	24	24	23	23	23	23	23	23
Std. Deviation	2.50	2.67	2.46	2.70	2.51	2.46	2.52	2.51	2.64	2.39	2.51	2.34
% CO2 < 23	34%	26%	28%	30%	32%	28%	37%	32%	31%	38%	45%	32%



	Jan	Feb	Mar	Apr	May	Jun	Jul	Aug	Sep	Oct	Nov	Dec
# CO2	146	151	157	156	153	157	154	155	155	155	152	146
# CO2 23 to 27	92	99	103	99	99	104	94	98	101	92	81	97
Pop. Mean	23	24	24	24	24	24	23	23	23	23	23	23
Std. Deviation	2.50	2.67	2.46	2.70	2.51	2.46	2.52	2.51	2.64	2.39	2.51	2.34
% CO2 23 to 27	63%	66%	66%	63%	65%	66%	61%	63%	65%	59%	53%	66%



	Jan	Feb	Mar	Apr	May	Jun	Jul	Aug	Sep	Oct	Nov	Dec
# CO2	146	151	157	156	153	157	154	155	155	155	152	146
# CO2 > 27	5	12	10	10	5	9	3	7	6	4	3	2
Pop. Mean	23	24	24	24	24	24	23	23	23	23	23	23
Std. Deviation	2.50	2.67	2.46	2.70	2.51	2.46	2.52	2.51	2.64	2.39	2.51	2.34
% CO2 > 27	3%	8%	6%	6%	3%	6%	2%	5%	4%	3%	2%	1%

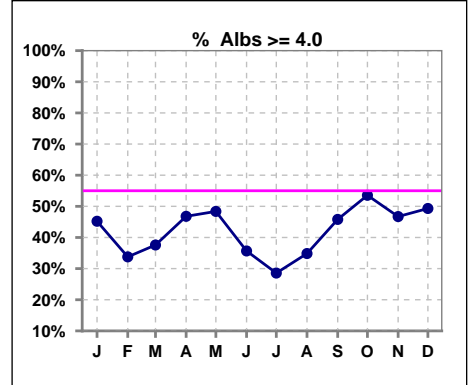


Methodology: a) All labs for 'Adequacy of Dialysis', 'Nutrition', 'Osteodystrophy', 'Anemia' and 'Diabetes' based on last value of month; b) BP's and #L processed are average of all values for month; c) Access data takes last access of month; d) Values for SGA and 'Infection Control' use most recent result.

*Albumin values use BCG method - as of July 2001

II. NUTRITION

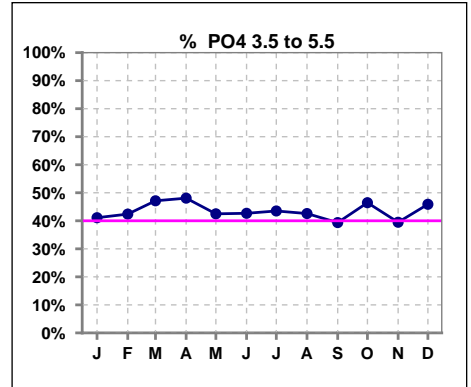
	Jan	Feb	Mar	Apr	May	Jun	Jul	Aug	Sep	Oct	Nov	Dec
# Albumin	146	151	157	156	153	157	154	155	155	155	152	146
# Albumin >= 4.0	66	51	59	73	74	56	44	54	71	83	71	72
Pop. Mean	3.8	3.7	3.8	3.8	3.8	3.7	3.7	3.8	3.9	3.9	3.9	3.9
Std. Deviation	0.38	0.40	0.41	0.40	0.39	0.39	0.41	0.41	0.35	0.38	0.38	0.35
% Alb >= 4.0	45%	34%	38%	47%	48%	36%	29%	35%	46%	54%	47%	49%



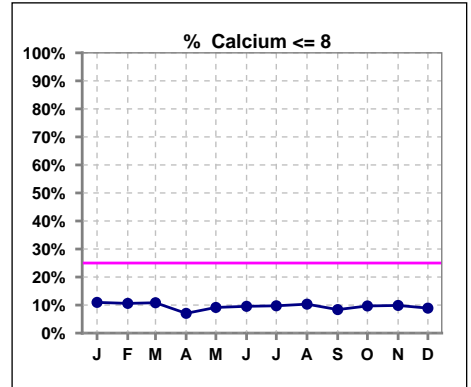
Lab methodology for PTH changed January 2012

III. OSTEODYSTROPHY

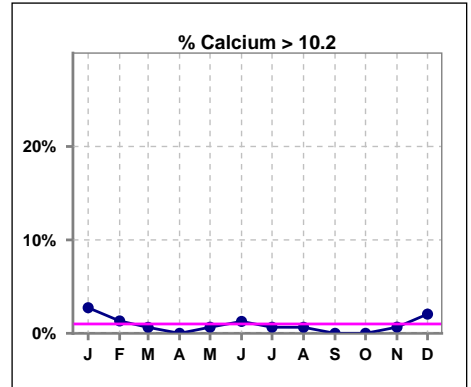
	Jan	Feb	Mar	Apr	May	Jun	Jul	Aug	Sep	Oct	Nov	Dec
# PO4	146	151	157	156	153	157	154	155	155	155	152	146
# PO4 3.5 to 5.5	60	64	74	75	65	67	67	66	61	72	60	67
Pop. Mean	6.0	5.8	5.7	5.7	5.7	5.7	5.6	5.9	5.8	5.7	5.8	5.7
Std. Deviation	1.76	1.99	1.69	1.77	1.81	1.80	1.58	1.78	2.05	1.91	1.87	1.97
% PO4 3.5 to 5.5	41%	42%	47%	48%	42%	43%	44%	43%	39%	46%	39%	46%



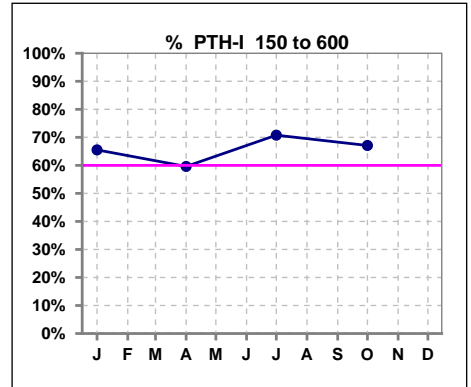
	Jan	Feb	Mar	Apr	May	Jun	Jul	Aug	Sep	Oct	Nov	Dec
# Calcium	146	151	157	156	153	157	154	155	155	155	152	146
# Calcium <= 8	16	16	17	11	14	15	15	16	13	15	15	13
Pop. Mean	9.1	9.1	9.0	9.1	9.0	9.2	9.0	9.0	9.0	9.0	9.1	9.1
Std. Deviation	0.73	0.80	0.75	0.67	0.73	0.69	0.73	0.78	0.69	0.70	0.67	0.73
% Calcium <= 8	11%	11%	11%	7%	9%	10%	10%	10%	8%	10%	10%	9%



	Jan	Feb	Mar	Apr	May	Jun	Jul	Aug	Sep	Oct	Nov	Dec
# Calcium	146	151	157	156	153	157	154	155	155	155	152	146
# Calcium > 10.2	4	2	1	0	1	2	1	1	0	0	1	3
Pop. Mean	9.1	9.1	9.0	9.1	9.0	9.2	9.0	9.0	9.0	9.0	9.1	9.1
Std. Deviation	0.73	0.80	0.75	0.67	0.73	0.69	0.73	0.78	0.69	0.70	0.67	0.73
% Calcium > 10.2	3%	1%	1%	0%	1%	1%	1%	1%	0%	0%	1%	2%



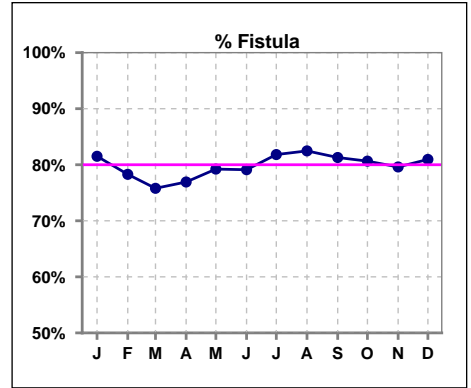
	Jan	Feb	Mar	Apr	May	Jun	Jul	Aug	Sep	Oct	Nov	Dec
# PTH-I	145			156			154			155		
# PTH-I 150 to 600	95			93			109			104		
Pop. Mean	453			427			407			422		
Std. Deviation	410			381			346			335		
% PTH-I 150 to 600	66%			60%			71%			67%		



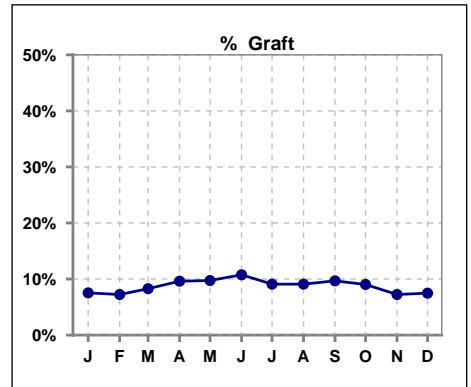
Methodology: a) All labs for 'Adequacy of Dialysis', 'Nutrition', 'Osteodystrophy', 'Anemia' and 'Diabetes' based on last value of month; b) BP's and #L processed are average of all values for month; c) Access data takes last access of month; d) Values for SGA and 'Infection Control' use most recent result.

IV. ACCESS

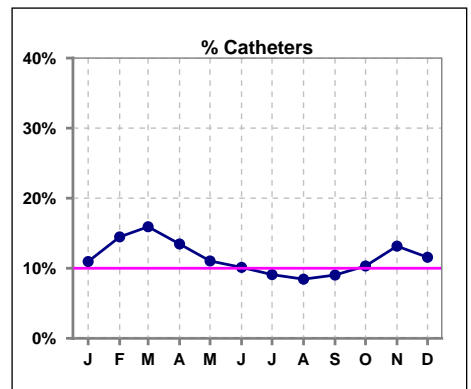
	Jan	Feb	Mar	Apr	May	Jun	Jul	Aug	Sep	Oct	Nov	Dec
# Access	146	152	157	156	154	158	154	154	155	155	152	147
# Fistula	119	119	119	120	122	125	126	127	126	125	121	119
% Fistula	82%	78%	76%	77%	79%	79%	82%	82%	81%	81%	80%	81%



	Jan	Feb	Mar	Apr	May	Jun	Jul	Aug	Sep	Oct	Nov	Dec
# Access	146	152	157	156	154	158	154	154	155	155	152	147
# Graft	11	11	13	15	15	17	14	14	15	14	11	11
% Graft	8%	7%	8%	10%	10%	11%	9%	9%	10%	9%	7%	7%



	Jan	Feb	Mar	Apr	May	Jun	Jul	Aug	Sep	Oct	Nov	Dec
# Access	146	152	157	156	154	158	154	154	155	155	152	147
# Catheters	16	22	25	21	17	16	14	13	14	16	20	17
% Catheters	11%	14%	16%	13%	11%	10%	9%	8%	9%	10%	13%	12%



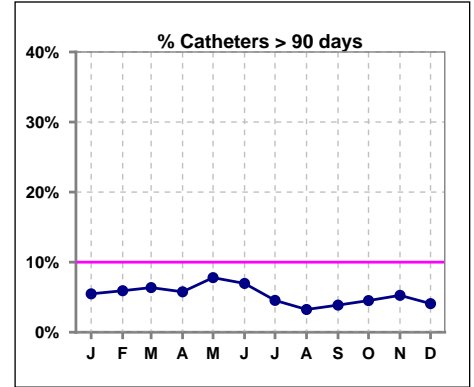
Methodology: a) All labs for 'Adequacy of Dialysis', 'Nutrition', 'Osteodystrophy', 'Anemia' and 'Diabetes' based on last value of month; b) BP's and #L processed are average of all values for month; c) Access data takes last access of month; d) Values for SGA and 'Infection Control' use most recent result.

IV. ACCESS - CONT.

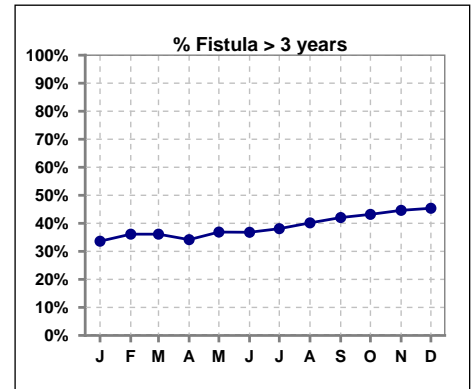
Catheters > 90 days

	Jan	Feb	Mar	Apr	May	Jun	Jul	Aug	Sep	Oct	Nov	Dec
# Access	146	152	157	156	154	158	154	154	155	155	152	147
# Catheters	8	9	10	9	12	11	7	5	6	7	8	6
% Catheters	5%	6%	6%	6%	8%	7%	5%	3%	4%	5%	5%	4%

Definition: Catheter in use on last treatment of the month



	Jan	Feb	Mar	Apr	May	Jun	Jul	Aug	Sep	Oct	Nov	Dec
# Fistula	119	119	119	120	122	125	126	127	126	125	121	119
# Fistula > 3 yrs	40	43	43	41	45	46	48	51	53	54	54	54
% Fistula > 3 yrs	34%	36%	36%	34%	37%	37%	38%	40%	42%	43%	45%	45%

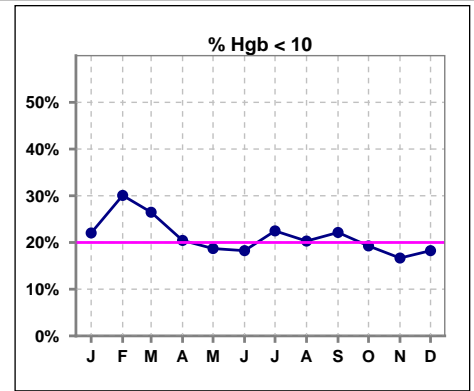


Methodology: a) All labs for 'Adequacy of Dialysis', 'Nutrition', 'Osteodystrophy', 'Anemia' and 'Diabetes' based on last value of month; b) BP's and #L processed are average of all values for month; c) Access data takes last access of month; d) Values for SGA and 'Infection Control' use most recent result.

V. ANEMIA

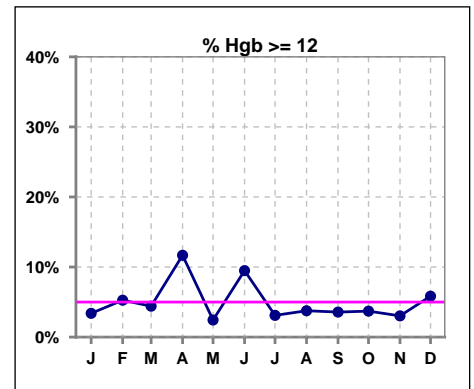
	Jan	Feb	Mar	Apr	May	Jun	Jul	Aug	Sep	Oct	Nov	Dec
# Hgb	118	133	136	137	123	137	129	133	140	135	132	137
# Hgb < 10	26	40	36	28	23	25	29	27	31	26	22	25
Pop. Mean	10.6	10.4	10.6	10.8	10.7	10.9	10.6	10.7	10.7	10.7	10.9	10.8
Std. Deviation	1.0	1.2	1.1	1.3	1.0	1.1	1.1	1.0	1.2	1.1	1.0	1.1
% Hgb < 10	22%	30%	26%	20%	19%	18%	22%	20%	22%	19%	17%	18%

Note: Excludes patients who received no ESA in month.



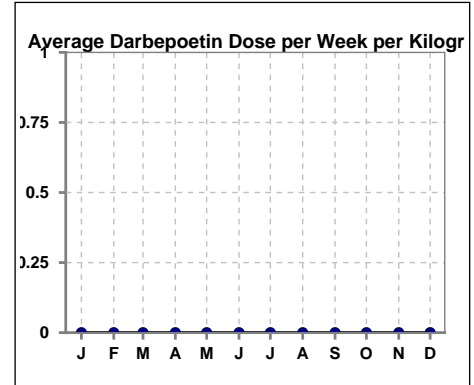
	Jan	Feb	Mar	Apr	May	Jun	Jul	Aug	Sep	Oct	Nov	Dec
# Hgb	118	133	136	137	123	137	129	133	140	135	132	137
# Hgb >= 12	4	7	6	16	3	13	4	5	5	5	4	8
Pop. Mean	10.6	10.4	10.6	10.8	10.7	10.9	10.6	10.7	10.7	10.7	10.9	10.8
Std. Deviation	1.0	1.2	1.1	1.3	1.0	1.1	1.1	1.0	1.2	1.1	1.0	1.1
% Hgb >= 12	3%	5%	4%	12%	2%	9%	3%	4%	4%	4%	3%	6%

Note: Excludes patients who received no ESA in month.



Average Darbepoetin Dose per Week per Kilogram

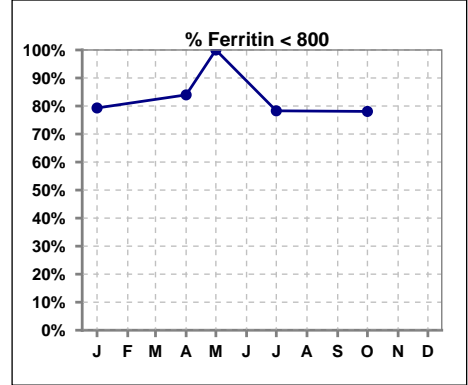
	Jan	Feb	Mar	Apr	May	Jun	Jul	Aug	Sep	Oct	Nov	Dec
# Average Darbepoetin	0	0	0	0	0	0	0	0	0	0	0	0



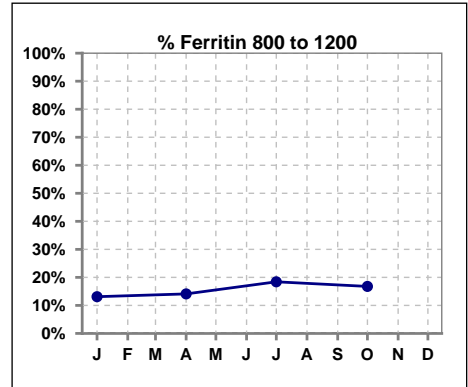
V. ANEMIA - CONT.

Iron Profile

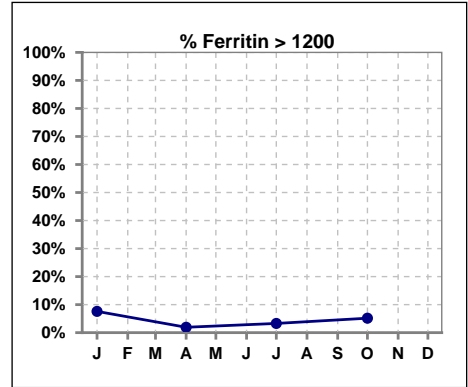
	Jan	Feb	Mar	Apr	May	Jun	Jul	Aug	Sep	Oct	Nov	Dec
# Ferritin	145			156	4		152			155		
# Ferritin < 800	115			131	4		119			121		
Pop. Mean	693			507	254		535			565		
Std. Deviation	1337			313	207		339			372		
% Ferritin < 800	79%			84%	100%		78%			78%		



	Jan	Feb	Mar	Apr	May	Jun	Jul	Aug	Sep	Oct	Nov	Dec
# Ferritin	145			156	4		152			155		
# Ferritin 800 to 1200	19			22			28			26		
Pop. Mean	693			507	254		535			565		
Std. Deviation	1337			313	207		339			372		
% Ferritin 800 to 1200	13%			14%			18%			17%		



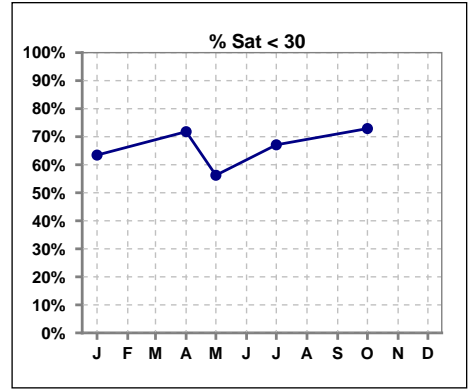
	Jan	Feb	Mar	Apr	May	Jun	Jul	Aug	Sep	Oct	Nov	Dec
# Ferritin	145			156	4		152			155		
# Ferritin > 1200	11			3			5			8		
Pop. Mean	693			507	254		535			565		
Std. Deviation	1337			313	207		339			372		
% Ferritin > 1200	8%			2%			3%			5%		



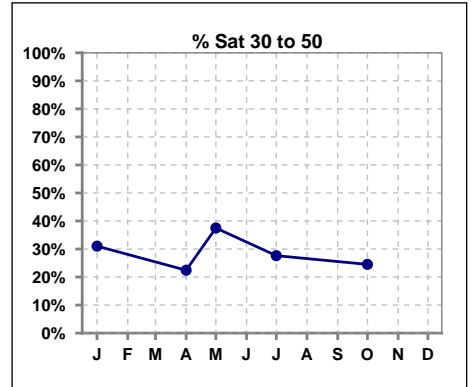
Methodology: a) All labs for 'Adequacy of Dialysis', 'Nutrition', 'Osteodystrophy', 'Anemia' and 'Diabetes' based on last value of month; b) BP's and #L processed are average of all values for month; c) Access data takes last access of month; d) Values for SGA and 'Infection Control' use most recent result.

V. ANEMIA - CONT.

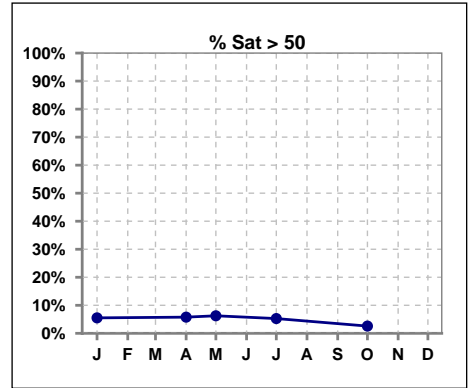
	Jan	Feb	Mar	Apr	May	Jun	Jul	Aug	Sep	Oct	Nov	Dec
# % Sat	145			156	16		152			155		
# % Sat < 30	92			112	9		102			113		
Pop. Mean	28			26	29		28			24		
Std. Deviation	14			12	15		14			11		
% % Sat < 30	63%			72%	56%		67%			73%		



	Jan	Feb	Mar	Apr	May	Jun	Jul	Aug	Sep	Oct	Nov	Dec
# % Sat	145			156	16		152			155		
# % Sat 30 to 50	45			35	6		42			38		
Pop. Mean	28			26	29		28			24		
Std. Deviation	14			12	15		14			11		
% % Sat 30 to 50	31%			22%	38%		28%			25%		



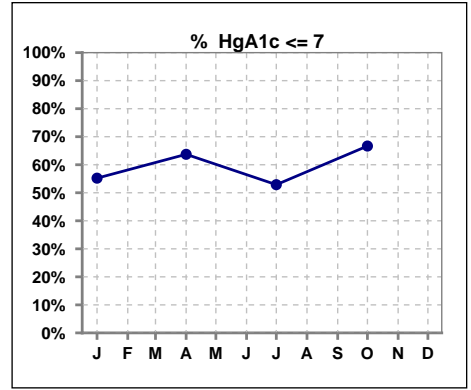
	Jan	Feb	Mar	Apr	May	Jun	Jul	Aug	Sep	Oct	Nov	Dec
# % Sat	145			156	16		152			155		
# % Sat > 50	8			9	1		8			4		
Pop. Mean	28			26	29		28			24		
Std. Deviation	14			12	15		14			11		
% % Sat > 50	6%			6%	6%		5%			3%		



Methodology: a) All labs for 'Adequacy of Dialysis', 'Nutrition', 'Osteodystrophy', 'Anemia' and 'Diabetes' based on last value of month; b) BP's and #L processed are average of all values for month; c) Access data takes last access of month; d) Values for SGA and 'Infection Control' use most recent result.

VI. Diabetes

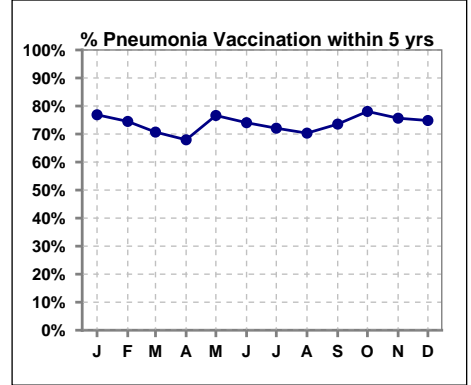
	Jan	Feb	Mar	Apr	May	Jun	Jul	Aug	Sep	Oct	Nov	Dec
# HgA1c	96			102			104			108		
# HgA1c <= 7	53			65			55			72		
Pop. Mean	7.1			6.7			6.9			6.6		
Std. Deviation	1.54			1.58			1.40			1.59		
% HgA1c <= 7	55%			64%			53%			67%		



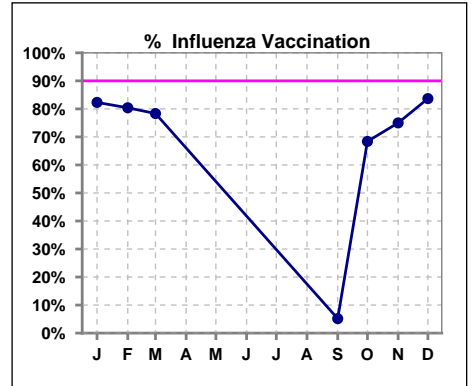
VII. Infection Control

Pneumonia vaccination within the past five years

	Jan	Feb	Mar	Apr	May	Jun	Jul	Aug	Sep	Oct	Nov	Dec
# Patient	147	153	157	156	154	158	154	155	155	155	152	147
# Pneumonia	113	114	111	106	118	117	111	109	114	121	115	110
% Pneumonia	77%	75%	71%	68%	77%	74%	72%	70%	74%	78%	76%	75%



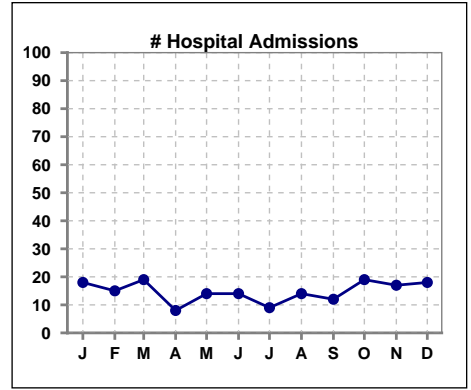
	Jan	Feb	Mar	Apr	May	Jun	Jul	Aug	Sep	Oct	Nov	Dec
# Patient	147	153	157						155	155	152	147
# Influenza	121	123	123						8	106	114	123
% Influenza	82%	80%	78%						5%	68%	75%	84%



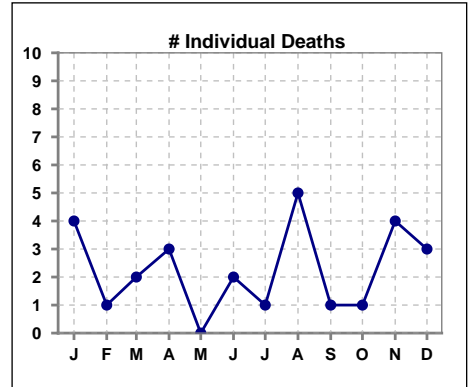
Methodology: a) All labs for 'Adequacy of Dialysis', 'Nutrition', 'Osteodystrophy', 'Anemia' and 'Diabetes' based on last value of month; b) BP's and #L processed are average of all values for month; c) Access data takes last access of month; d) Values for SGA and 'Infection Control' use most recent result.

VIII. Outcome measures

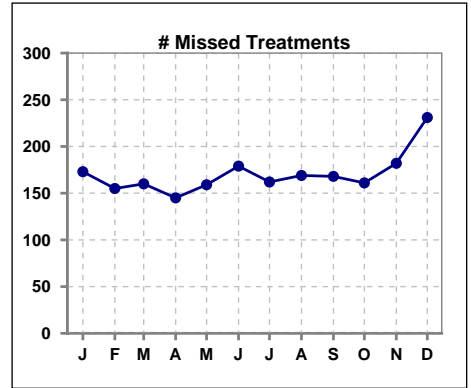
	Jan	Feb	Mar	Apr	May	Jun	Jul	Aug	Sep	Oct	Nov	Dec
# Patient	147	153	157	156	154	158	154	155	155	155	152	147
# Hospital Admissions	18	15	19	8	14	14	9	14	12	19	17	18



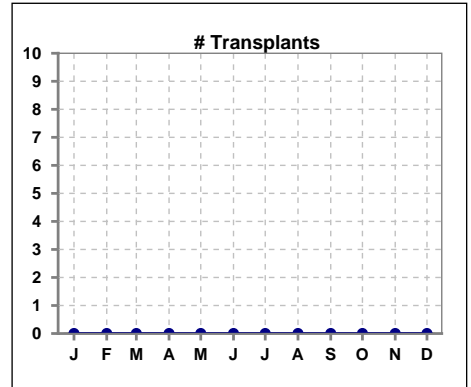
	Jan	Feb	Mar	Apr	May	Jun	Jul	Aug	Sep	Oct	Nov	Dec
# Patient	147	153	157	156	154	158	154	155	155	155	152	147
# Individual Deaths	4	1	2	3	0	2	1	5	1	1	4	3



	Jan	Feb	Mar	Apr	May	Jun	Jul	Aug	Sep	Oct	Nov	Dec
# Patient	147	153	157	156	154	158	154	155	155	155	152	147
# Missed Treatments	173	155	160	145	159	179	162	169	168	161	182	231



	Jan	Feb	Mar	Apr	May	Jun	Jul	Aug	Sep	Oct	Nov	Dec
# Patient	147	153	157	156	154	158	154	155	155	155	152	147
# Transplants	0	0	0	0	0	0	0	0	0	0	0	0



Methodology: a) All labs for 'Adequacy of Dialysis', 'Nutrition', 'Osteodystrophy', 'Anemia' and 'Diabetes' based on last value of month; b) BP's and #L processed are average of all values for month; c) Access data takes last access of month; d) Values for SGA and 'Infection Control' use most recent result.