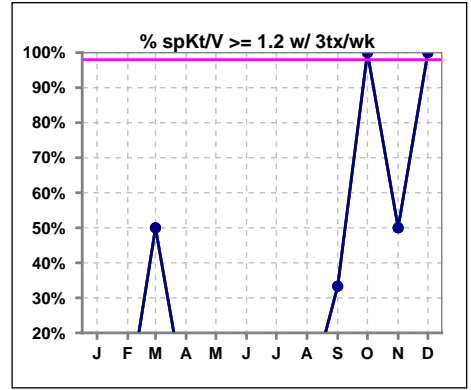
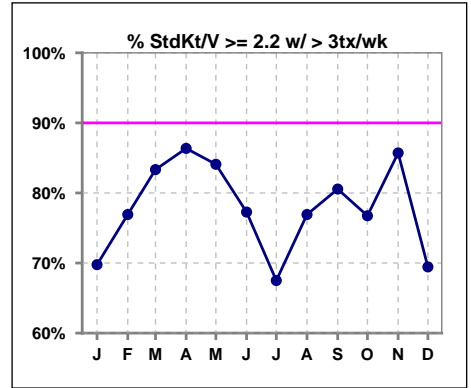


I. ADEQUACY OF DIALYSIS

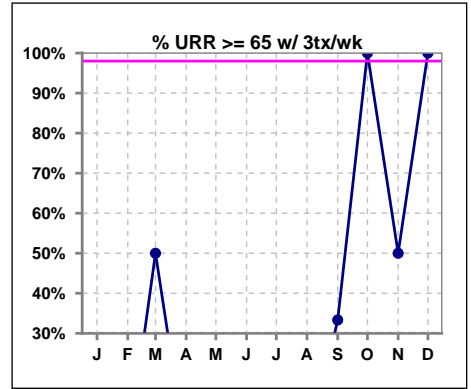
	Jan	Feb	Mar	Apr	May	Jun	Jul	Aug	Sep	Oct	Nov	Dec
# spKt/V w/3tx/wk	2	1	2	1	1	0	1	0	3	1	2	2
# spKt/V>=1.2 w/3tx/wk	0	0	1	0	0	0	0	0	1	1	1	2
Pop. Mean	0.71	0.58	1.17	0.60	0.55	0	0.82	0	1.11	1.21	1.24	1.40
Std. Deviation	0.12	0	0.74	0	0	0	0	0	0.35	0	0.40	0.15
% >=1.2 w/3tx/wk	0%	0%	50%	0%	0%	0%	0%	0%	33%	100%	50%	100%



	Jan	Feb	Mar	Apr	May	Jun	Jul	Aug	Sep	Oct	Nov	Dec
# StdKt/V w/>3tx/wk	43	39	42	44	44	44	40	39	36	43	35	36
# >= 2.2 w/>3tx/wk	30	30	35	38	37	34	27	30	29	33	30	25
Pop. Mean	2.38	2.40	2.40	2.36	2.43	2.34	2.31	2.36	2.38	2.34	2.36	2.31
Std. Deviation	0.31	0.34	0.39	0.25	0.32	0.26	0.32	0.31	0.34	0.35	0.29	0.33
% >= 2.2 w/>3tx/wk	70%	77%	83%	86%	84%	77%	68%	77%	81%	77%	86%	69%



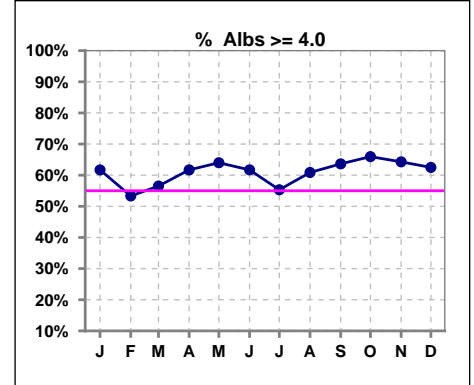
	Jan	Feb	Mar	Apr	May	Jun	Jul	Aug	Sep	Oct	Nov	Dec
# URR w/ 3tx/wk	2	1	2	1	1	1	1	0	3	1	2	2
# URR>=65 w/ 3tx/wk	0	0	1	0	0	0	0	0	1	1	1	2
Pop. Mean	48	42	63	43	41	40	54	0	62	66	66	71
Std. Deviation	4.24	0	23.33	0	0	0	0	0	11.79	0	11.31	3.54
% URR>=65 w/ 3tx/wk	0%	0%	50%	0%	0%	0%	0%	0%	33%	100%	50%	100%



*Albumin values use BCG method - as of July 2001

II. NUTRITION

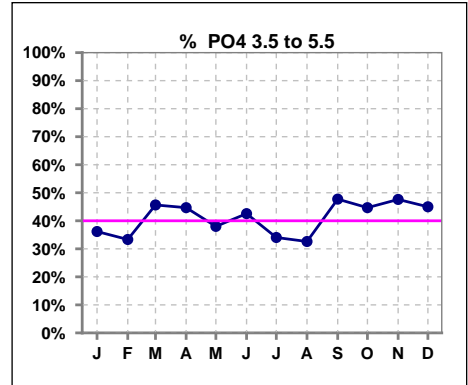
	Jan	Feb	Mar	Apr	May	Jun	Jul	Aug	Sep	Oct	Nov	Dec
# Albumin	47	45	46	47	50	47	47	46	44	47	42	40
# Albumin >= 4.0	29	24	26	29	32	29	26	28	28	31	27	25
Pop. Mean	4.1	4.0	4.0	4.1	4.1	4.1	4.0	4.0	4.0	4.1	4.0	4.0
Std. Deviation	0.37	0.34	0.38	0.39	0.33	0.37	0.32	0.41	0.39	0.37	0.34	0.32
% Alb >= 4.0	62%	53%	57%	62%	64%	62%	55%	61%	64%	66%	64%	63%



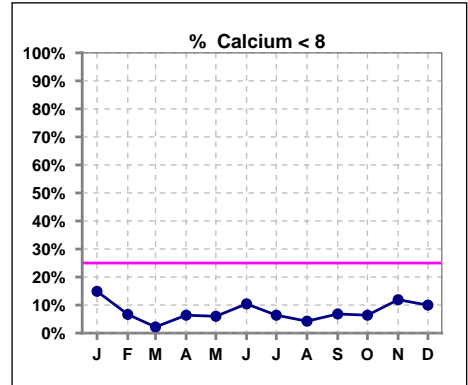
Lab methodology for PTH changed January 2012

III. OSTEODYSTROPHY

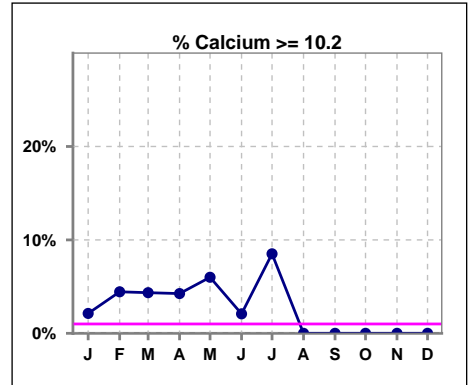
	Jan	Feb	Mar	Apr	May	Jun	Jul	Aug	Sep	Oct	Nov	Dec
# PO4	47	45	46	47	50	47	47	46	44	47	42	40
# PO4 3.5 to 5.5	17	15	21	21	19	20	16	15	21	21	20	18
Pop. Mean	6.2	5.7	5.6	6.0	5.8	6.0	6.1	6.2	5.9	5.8	6.0	6.0
Std. Deviation	1.74	1.60	1.57	1.96	1.63	1.77	1.57	1.78	2.07	1.94	2.08	2.03
% PO4 3.5 to 5.5	36%	33%	46%	45%	38%	43%	34%	33%	48%	45%	48%	45%



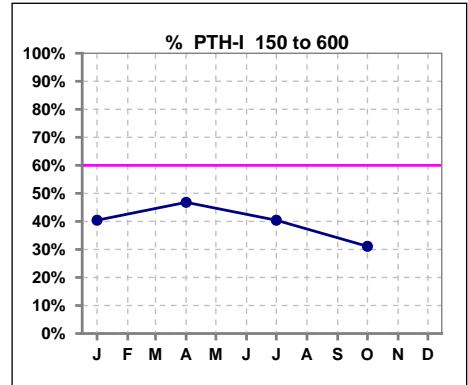
	Jan	Feb	Mar	Apr	May	Jun	Jul	Aug	Sep	Oct	Nov	Dec
# Calcium	47	45	46	47	50	48	47	47	44	47	42	40
# Calcium <= 8	7	3	1	3	3	5	3	2	3	3	5	4
Pop. Mean	9.1	9.1	9.2	9.2	9.2	9.2	9.1	9.1	9.1	9.1	9.0	9.0
Std. Deviation	0.82	0.75	0.72	0.72	0.72	0.67	0.70	0.54	0.59	0.70	0.60	0.67
% Calcium <= 8	15%	7%	2%	6%	6%	10%	6%	4%	7%	6%	12%	10%



	Jan	Feb	Mar	Apr	May	Jun	Jul	Aug	Sep	Oct	Nov	Dec
# Calcium	47	45	46	47	50	48	47	47	44	47	42	40
# Calcium > 10.2	1	2	2	2	3	1	4	0	0	0	0	0
Pop. Mean	9.1	9.1	9.2	9.2	9.2	9.2	9.1	9.1	9.1	9.1	9.0	9.0
Std. Deviation	0.82	0.75	0.72	0.72	0.72	0.67	0.70	0.54	0.59	0.70	0.60	0.67
% Calcium > 10.2	2%	4%	4%	4%	6%	2%	9%	0%	0%	0%	0%	0%



	Jan	Feb	Mar	Apr	May	Jun	Jul	Aug	Sep	Oct	Nov	Dec
# PTH-I	47			47			47			45		
# PTH-I 150 to 600	19			22			19			14		
Pop. Mean	808			766			708			770		
Std. Deviation	612			557			544			676		
% PTH-I 150 to 600	40%			47%			40%			31%		

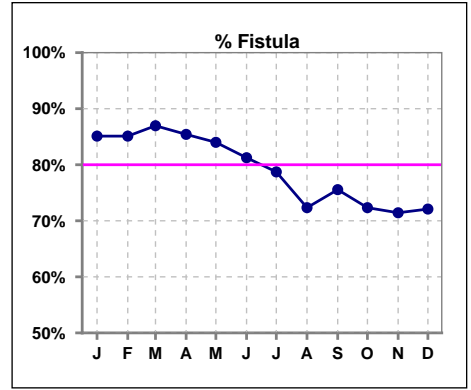


Methodology: a) All labs for 'Adequacy of Dialysis', 'Nutrition', 'Osteodystrophy' and 'Anemia' based on last value of month; b) Access data takes last access of month; c) Values for 'Infection Control' uses most recent result.

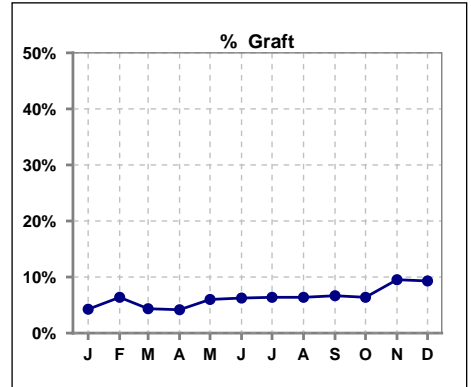
Northwest Kidney Centers - Home Hemodialysis
Quality Assurance Reports
 Through period ending Dec. 31, 2021

IV. ACCESS

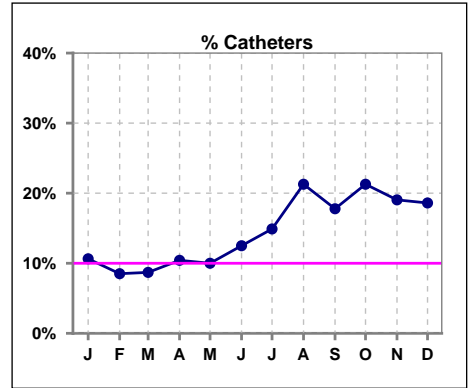
	Jan	Feb	Mar	Apr	May	Jun	Jul	Aug	Sep	Oct	Nov	Dec
# Access	47	47	46	48	50	48	47	47	45	47	42	43
# Fistula	40	40	40	41	42	39	37	34	34	34	30	31
% Fistula	85%	85%	87%	85%	84%	81%	79%	72%	76%	72%	71%	72%



	Jan	Feb	Mar	Apr	May	Jun	Jul	Aug	Sep	Oct	Nov	Dec
# Access	47	47	46	48	50	48	47	47	45	47	42	43
# Graft	2	3	2	2	3	3	3	3	3	3	4	4
% Graft	4%	6%	4%	4%	6%	6%	6%	6%	7%	6%	10%	9%



	Jan	Feb	Mar	Apr	May	Jun	Jul	Aug	Sep	Oct	Nov	Dec
# Access	47	47	46	48	50	48	47	47	45	47	42	43
# Catheters	5	4	4	5	5	6	7	10	8	10	8	8
% Catheters	11%	9%	9%	10%	10%	13%	15%	21%	18%	21%	19%	19%



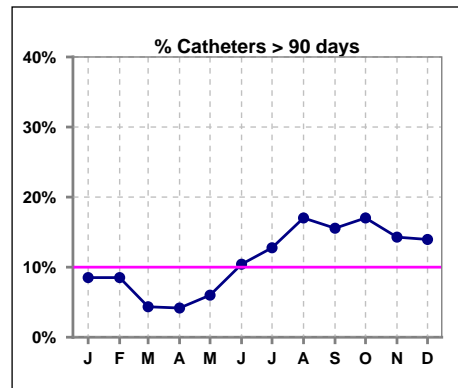
Methodology: a) All labs for 'Adequacy of Dialysis', 'Nutrition', 'Osteodystrophy' and 'Anemia' based on last value of month; b) Access data takes last access of month; c) Values for 'Infection Control' uses most recent result.

IV. ACCESS - CONT.

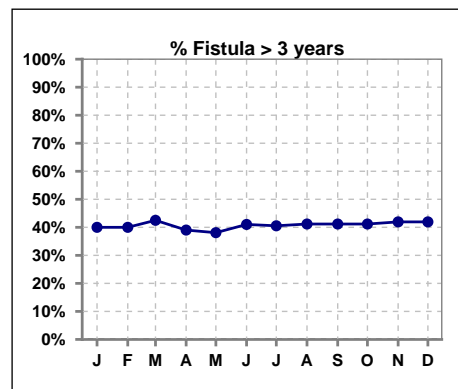
Catheters > 90 days

	Jan	Feb	Mar	Apr	May	Jun	Jul	Aug	Sep	Oct	Nov	Dec
# Access	47	47	46	48	50	48	47	47	45	47	42	43
# Catheters	4	4	2	2	3	5	6	8	7	8	6	6
% Catheters	9%	9%	4%	4%	6%	10%	13%	17%	16%	17%	14%	14%

Definition: Catheter in use on last treatment of the month

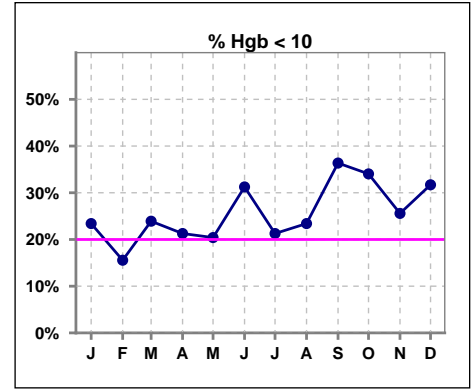


	Jan	Feb	Mar	Apr	May	Jun	Jul	Aug	Sep	Oct	Nov	Dec
# Fistula	40	40	40	41	42	39	37	34	34	34	31	31
# Fistula > 3 yrs	16	16	17	16	16	16	15	14	14	14	13	13
% Fistula > 3 yrs	40%	40%	43%	39%	38%	41%	41%	41%	41%	41%	42%	42%

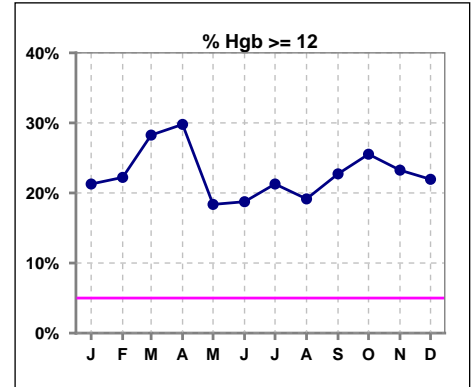


V. ANEMIA

	Jan	Feb	Mar	Apr	May	Jun	Jul	Aug	Sep	Oct	Nov	Dec
# Hgb	47	45	46	47	49	48	47	47	44	47	43	41
# Hgb < 10	11	7	11	10	10	15	10	11	16	16	11	13
Pop. Mean	11.1	11.2	11.2	11.2	11.0	10.9	11.1	11.0	10.9	10.8	11.0	10.8
Std. Deviation	1.8	1.7	1.8	1.8	1.7	2.1	1.7	1.6	1.8	1.9	1.5	1.6
% Hgb < 10	23%	16%	24%	21%	20%	31%	21%	23%	36%	34%	26%	32%



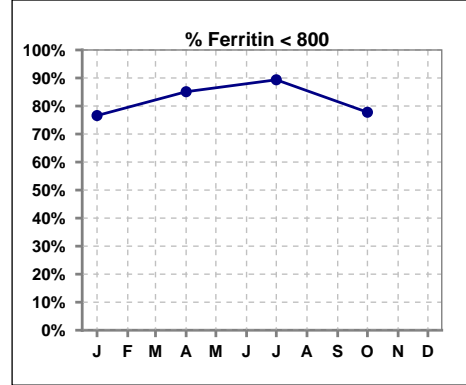
	Jan	Feb	Mar	Apr	May	Jun	Jul	Aug	Sep	Oct	Nov	Dec
# Hgb	47	45	46	47	49	48	47	47	44	47	43	41
# Hgb >= 12	10	10	13	14	9	9	10	9	10	12	10	9
Pop. Mean	11.1	11.2	11.2	11.2	11.0	10.9	11.1	11.0	10.9	10.8	11.0	10.8
Std. Deviation	1.8	1.7	1.8	1.8	1.7	2.1	1.7	1.6	1.8	1.9	1.5	1.6
% Hgb >= 12	21%	22%	28%	30%	18%	19%	21%	19%	23%	26%	23%	22%



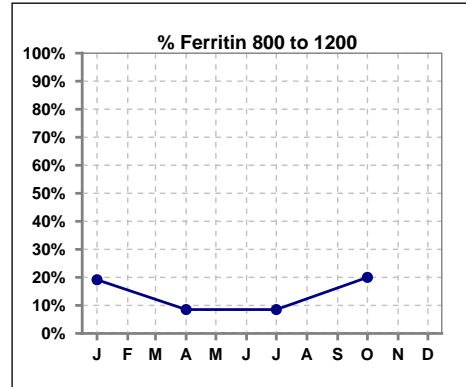
V. ANEMIA - CONT.

Iron Profile

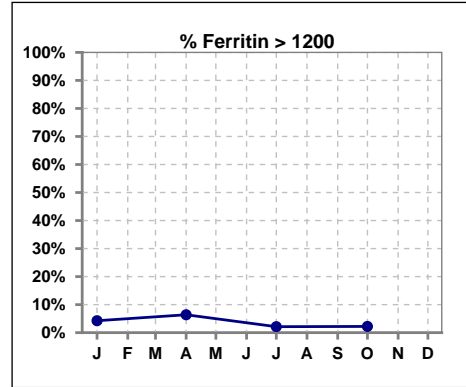
	Jan	Feb	Mar	Apr	May	Jun	Jul	Aug	Sep	Oct	Nov	Dec
# Ferritin	47			47			47			45		
# Ferritin < 800	36			40			42			35		
Pop. Mean	540			533			486			483		
Std. Deviation	360			373			301			352		
% Ferritin < 800	77%			85%			89%			78%		



	Jan	Feb	Mar	Apr	May	Jun	Jul	Aug	Sep	Oct	Nov	Dec
# Ferritin	47			47			47			45		
# Ferritin 800 to 1200	9			4			4			9		
Pop. Mean	540			533			486			483		
Std. Deviation	360			373			301			352		
% Ferritin 800 to 1200	19%			9%			9%			20%		

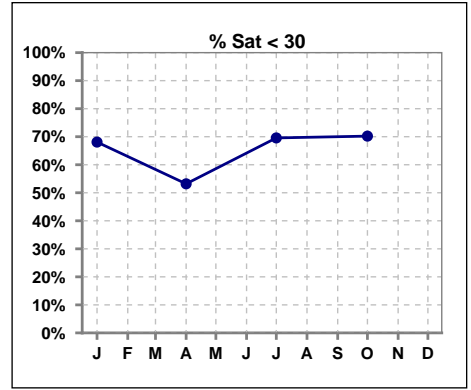


	Jan	Feb	Mar	Apr	May	Jun	Jul	Aug	Sep	Oct	Nov	Dec
# Ferritin	47			47			47			45		
# Ferritin > 1200	2			3			1			1		
Pop. Mean	540			533			486			483		
Std. Deviation	360			373			301			352		
% Ferritin > 1200	4%			6%			2%			2%		

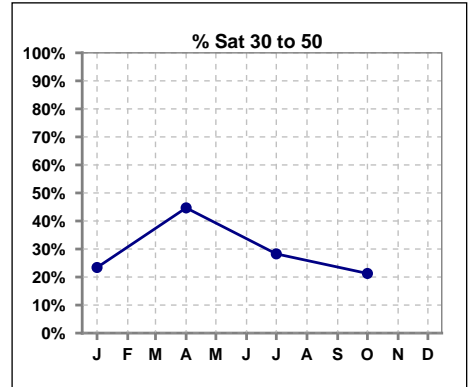


V. ANEMIA - CONT.

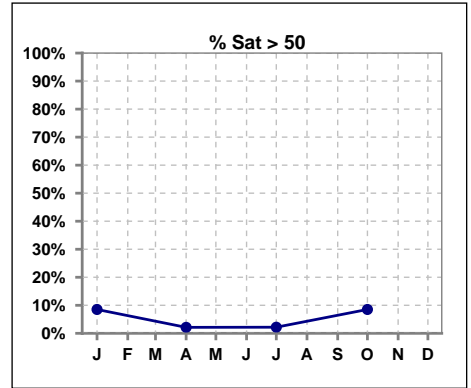
	Jan	Feb	Mar	Apr	May	Jun	Jul	Aug	Sep	Oct	Nov	Dec
# % Sat	47			47			46			47		
# % Sat < 30	32			25			32			33		
Pop. Mean	28			28			28			29		
Std. Deviation	11			11			14			19		
% % Sat < 30	68%			53%			70%			70%		



	Jan	Feb	Mar	Apr	May	Jun	Jul	Aug	Sep	Oct	Nov	Dec
# % Sat	47			47			46			47		
# % Sat 30 to 50	11			21			13			10		
Pop. Mean	28			28			28			29		
Std. Deviation	11			11			14			19		
% % Sat 30 to 50	23%			45%			28%			21%		

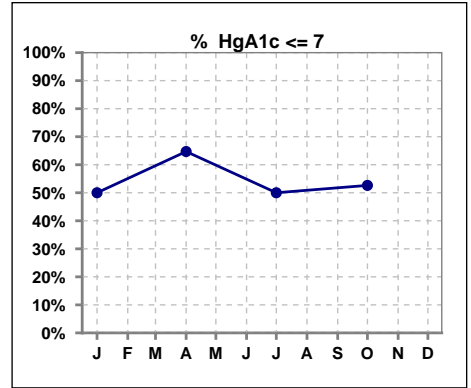


	Jan	Feb	Mar	Apr	May	Jun	Jul	Aug	Sep	Oct	Nov	Dec
# % Sat	47			47			46			47		
# % Sat > 50	4			1			1			4		
Pop. Mean	28			28			28			29		
Std. Deviation	11			11			14			19		
% % Sat > 50	9%			2%			2%			9%		



VI. Diabetes

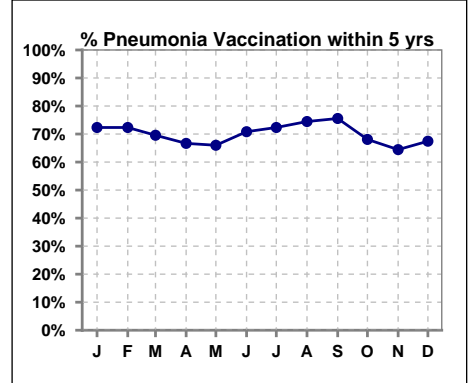
	Jan	Feb	Mar	Apr	May	Jun	Jul	Aug	Sep	Oct	Nov	Dec
# HgA1c	18			17			18			19		
# HgA1c <= 7	9			11			9			10		
Pop. Mean	7.4			7.2			7.0			7.0		
Std. Deviation	1.85			1.56			1.69			1.24		
% HgA1c <= 7	50%			65%			50%			53%		



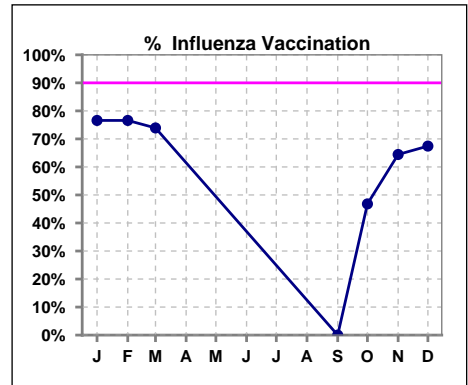
VII. Infection Control

Pneumonia vaccination within the past five years

	Jan	Feb	Mar	Apr	May	Jun	Jul	Aug	Sep	Oct	Nov	Dec
# Patient	47	47	46	48	50	48	47	47	45	47	45	43
# Pneumonia	34	34	32	32	33	34	34	35	34	32	29	29
% Pneumonia	72%	72%	70%	67%	66%	71%	72%	74%	76%	68%	64%	67%



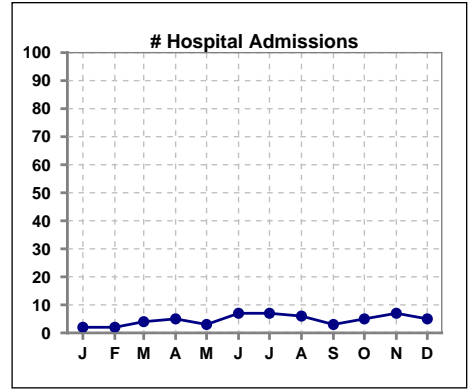
	Jan	Feb	Mar	Apr	May	Jun	Jul	Aug	Sep	Oct	Nov	Dec
# Patient	47	47	46						45	47	45	43
# Influenza	36	36	34						0	22	29	29
% Influenza	77%	77%	74%						0%	47%	64%	67%



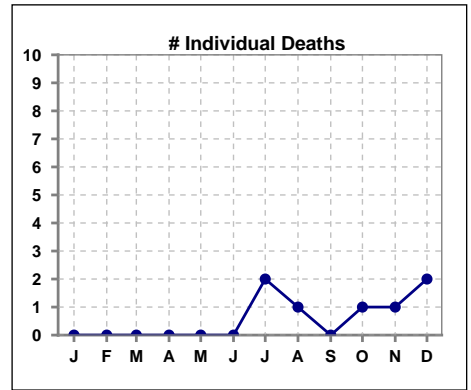
Methodology: a) All labs for 'Adequacy of Dialysis', 'Nutrition', 'Osteodystrophy' and 'Anemia' based on last value of month; b) Access data takes last access of month; c) Values for 'Infection Control' uses most recent result.

VIII. Outcome measures

	Jan	Feb	Mar	Apr	May	Jun	Jul	Aug	Sep	Oct	Nov	Dec
# Patient	47	47	46	48	50	48	47	47	45	47	45	43
# Hospital Admissions	2	2	4	5	3	7	7	6	3	5	7	5



	Jan	Feb	Mar	Apr	May	Jun	Jul	Aug	Sep	Oct	Nov	Dec
# Patient	47	47	46	48	50	48	47	47	45	47	45	43
# Individual Deaths	0	0	0	0	0	0	2	1	0	1	1	2



	Jan	Feb	Mar	Apr	May	Jun	Jul	Aug	Sep	Oct	Nov	Dec
# Patient	47	47	46	48	50	48	47	47	45	47	45	43
# Transplants	0	0	1	0	0	0	0	1	0	0	0	0

