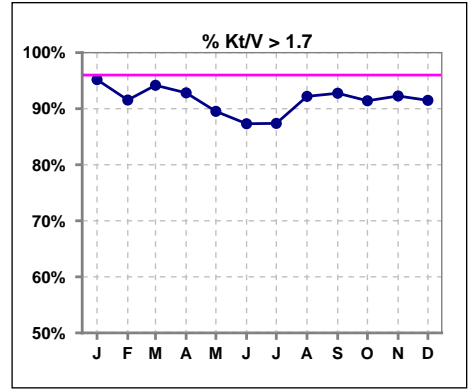
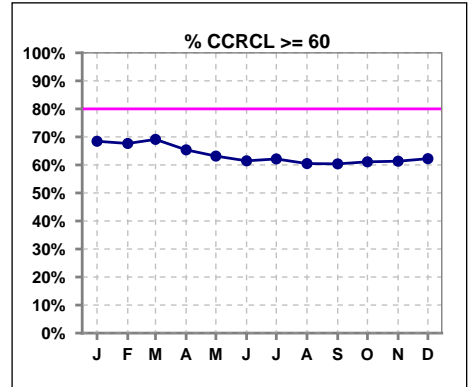


I. ADEQUACY OF DIALYSIS

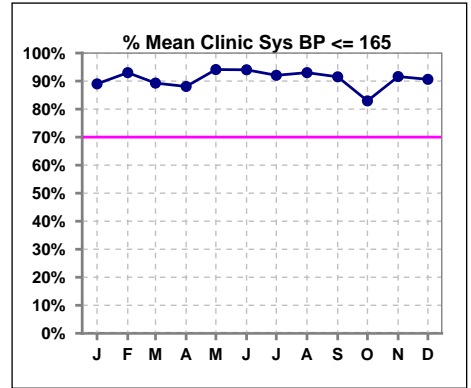
	Jan	Feb	Mar	Apr	May	Jun	Jul	Aug	Sep	Oct	Nov	Dec
# Kt/V - CA/CC PD	187	201	206	209	210	205	206	205	207	198	194	188
# Kt/V >= 1.7	178	184	194	194	188	179	180	189	192	181	179	172
Pop. Mean	2.26	2.21	2.25	2.22	2.19	2.15	2.16	2.18	2.19	2.19	2.20	2.18
Std. Deviation	0.58	0.54	0.53	0.47	0.47	0.46	0.46	0.44	0.44	0.49	0.45	0.43
% Kt/V >= 1.7	95%	92%	94%	93%	90%	87%	87%	92%	93%	91%	92%	91%



	Jan	Feb	Mar	Apr	May	Jun	Jul	Aug	Sep	Oct	Nov	Dec
# CRCL CA/CC PD	187	201	204	208	209	205	206	205	207	198	194	188
# CCRCL >= 60	128	136	141	136	132	126	128	124	125	121	119	117
Pop. Mean	81.11	80.07	80.86	80.64	79.23	77.51	76.49	74.90	73.81	73.78	73.35	72.98
Std. Deviation	35.92	36.71	35.88	36.37	35.68	34.35	32.85	28.97	27.08	28.06	27.90	27.38
% CCRCL >= 60	68%	68%	69%	65%	63%	61%	62%	60%	60%	61%	61%	62%

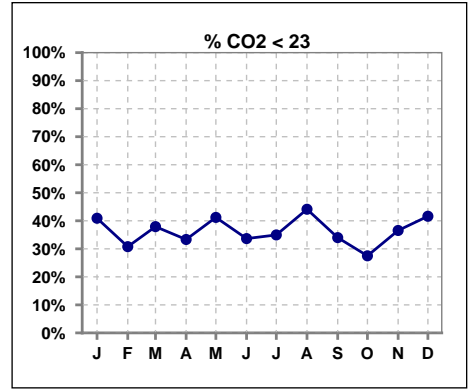


	Jan	Feb	Mar	Apr	May	Jun	Jul	Aug	Sep	Oct	Nov	Dec
# Mean Clinic Sys BP	191	186	196	193	204	201	189	186	177	170	167	160
# Sys BP <= 165	170	173	175	170	192	189	174	173	162	141	153	145
Pop. Mean	137	136	138	138	135	134	134	137	137	141	138	140
Std. Deviation	22.7	21.4	21.2	21.9	20.0	21.1	21.8	20.8	24.2	23.6	22.5	21.8
% Sys BP <=165	89%	93%	89%	88%	94%	94%	92%	93%	92%	83%	92%	91%

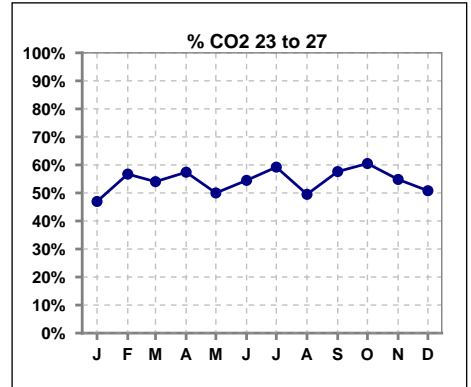


I. ADEQUACY OF DIALYSIS - CONT.

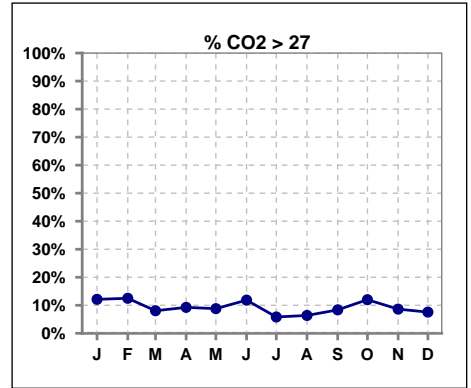
	Jan	Feb	Mar	Apr	May	Jun	Jul	Aug	Sep	Oct	Nov	Dec
# CO2	198	208	211	216	216	211	206	204	203	200	197	185
# CO2 < 23	81	64	80	72	89	71	72	90	69	55	72	77
Pop. Mean	23	24	23	24	23	24	23	23	24	24	24	23
Std. Deviation	3.29	3.08	3.01	2.93	3.04	3.05	2.99	2.80	2.94	3.02	2.94	2.81
% CO2 < 23	41%	31%	38%	33%	41%	34%	35%	44%	34%	28%	37%	42%



	Jan	Feb	Mar	Apr	May	Jun	Jul	Aug	Sep	Oct	Nov	Dec
# CO2	198	208	211	216	216	211	206	204	203	200	197	185
# CO2 23 to 27	93	118	114	124	108	115	122	101	117	121	108	94
Pop. Mean	23	24	23	24	23	24	23	23	24	24	24	23
Std. Deviation	3.29	3.08	3.01	2.93	3.04	3.05	2.99	2.80	2.94	3.02	2.94	2.81
% CO2 23 to 27	47%	57%	54%	57%	50%	55%	59%	50%	58%	61%	55%	51%



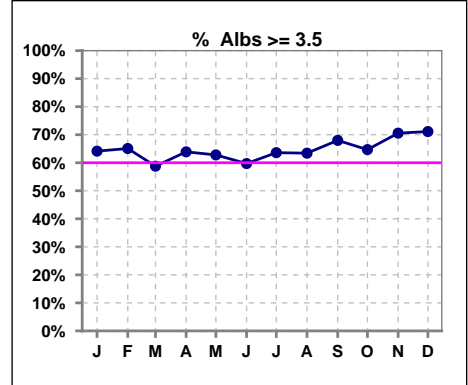
	Jan	Feb	Mar	Apr	May	Jun	Jul	Aug	Sep	Oct	Nov	Dec
# CO2	198	208	211	216	216	211	206	204	203	200	197	185
# CO2 > 27	24	26	17	20	19	25	12	13	17	24	17	14
Pop. Mean	23	24	23	24	23	24	23	23	24	24	24	23
Std. Deviation	3.29	3.08	3.01	2.93	3.04	3.05	2.99	2.80	2.94	3.02	2.94	2.81
% CO2 > 27	12%	13%	8%	9%	9%	12%	6%	6%	8%	12%	9%	8%



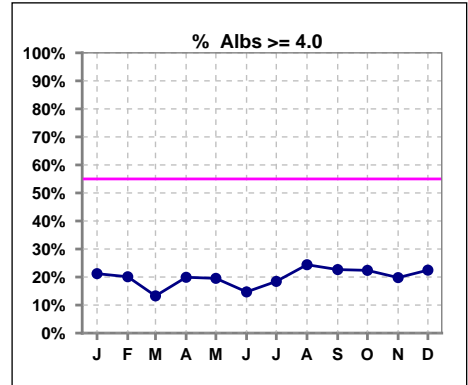
*Albumin values use BCG method - as of July 2001

II. NUTRITION

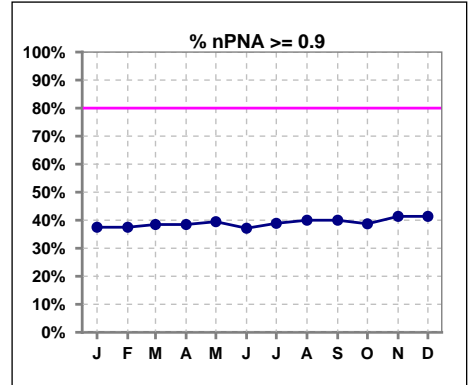
	Jan	Feb	Mar	Apr	May	Jun	Jul	Aug	Sep	Oct	Nov	Dec
# Albumin	198	209	211	216	215	211	206	205	203	201	197	187
# Albumin >= 3.5	127	136	124	138	135	126	131	130	138	130	139	133
Pop. Mean	3.6	3.6	3.5	3.6	3.6	3.5	3.6	3.6	3.6	3.6	3.6	3.6
Std. Deviation	0.42	0.41	0.41	0.42	0.43	0.40	0.40	0.41	0.41	0.42	0.40	0.45
% Alb >= 3.5	64%	65%	59%	64%	63%	60%	64%	63%	68%	65%	71%	71%



	Jan	Feb	Mar	Apr	May	Jun	Jul	Aug	Sep	Oct	Nov	Dec
# Albumin	198	209	211	216	215	211	206	205	203	201	197	187
# Albumin >= 4.0	42	42	28	43	42	31	38	50	46	45	39	42
Pop. Mean	3.6	3.6	3.5	3.6	3.6	3.5	3.6	3.6	3.6	3.6	3.6	3.6
Std. Deviation	0.42	0.41	0.41	0.42	0.43	0.40	0.40	0.41	0.41	0.42	0.40	0.45
% Alb >= 4.0	21%	20%	13%	20%	20%	15%	18%	24%	23%	22%	20%	22%



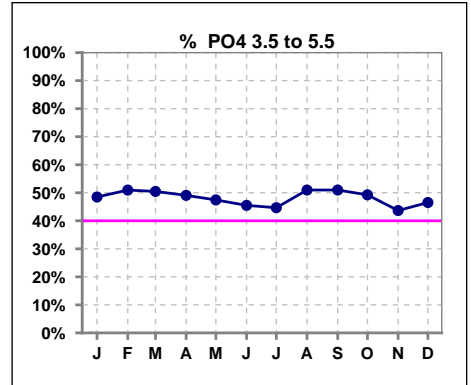
	Jan	Feb	Mar	Apr	May	Jun	Jul	Aug	Sep	Oct	Nov	Dec
# nPNA	40	40	39	39	38	35	36	35	35	31	29	29
# nPNA >= 0.9	15	15	15	15	15	13	14	14	14	12	12	12
Pop. Mean	0.9	0.9	0.9	0.9	0.9	0.9	0.9	0.9	0.9	0.9	1.0	1.0
Std. Deviation	0.24	0.27	0.28	0.28	0.28	0.29	0.29	0.28	0.28	0.29	0.29	0.29
% nPNA >= 0.9	38%	38%	38%	38%	39%	37%	39%	40%	40%	39%	41%	41%



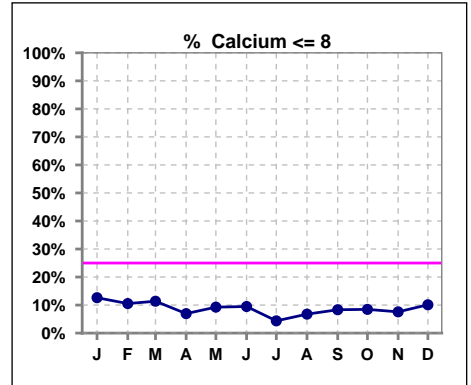
Lab methodology for PTH changed January 2012

III. OSTEODYSTROPHY

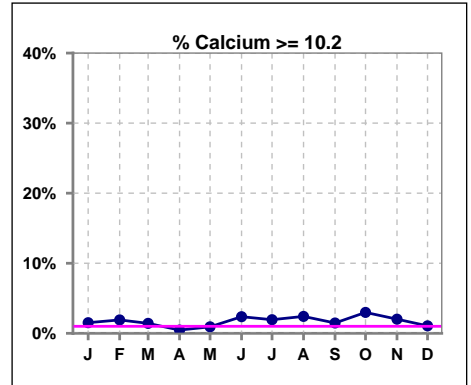
	Jan	Feb	Mar	Apr	May	Jun	Jul	Aug	Sep	Oct	Nov	Dec
# PO4	198	208	210	216	215	211	206	206	204	201	197	187
# PO4 3.5 to 5.5	96	106	106	106	102	96	92	105	104	99	86	87
Pop. Mean	5.5	5.5	5.4	5.5	5.7	5.6	5.7	5.6	5.7	5.7	5.7	5.6
Std. Deviation	1.47	1.40	1.38	1.43	1.55	1.51	1.50	1.49	1.46	1.44	1.59	1.50
% PO4 3.5 to 5.5	48%	51%	50%	49%	47%	45%	45%	51%	51%	49%	44%	47%



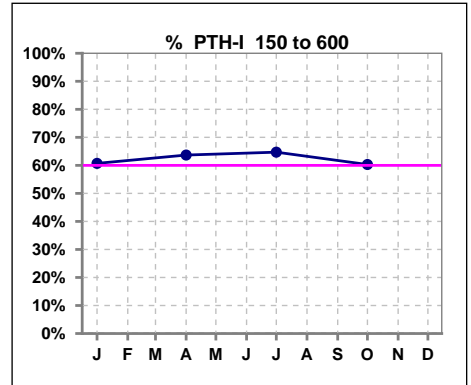
	Jan	Feb	Mar	Apr	May	Jun	Jul	Aug	Sep	Oct	Nov	Dec
# Calcium	198	209	211	216	216	211	206	207	204	201	198	188
# Calcium <= 8	25	22	24	15	20	20	9	14	17	17	15	19
Pop. Mean	8.9	9.0	8.9	8.9	9.0	9.0	9.1	9.1	9.0	9.0	9.1	9.0
Std. Deviation	0.69	0.70	0.70	0.65	0.69	0.71	0.62	0.70	0.71	0.71	0.66	0.68
% Calcium <= 8	13%	11%	11%	7%	9%	9%	4%	7%	8%	8%	8%	10%



	Jan	Feb	Mar	Apr	May	Jun	Jul	Aug	Sep	Oct	Nov	Dec
# Calcium	198	209	211	216	216	211	206	207	204	201	198	188
# Calcium >= 10.2	3	4	3	1	2	5	4	5	3	6	4	2
Pop. Mean	8.9	9.0	8.9	8.9	9.0	9.0	9.1	9.1	9.0	9.0	9.1	9.0
Std. Deviation	0.69	0.70	0.70	0.65	0.69	0.71	0.62	0.70	0.71	0.71	0.66	0.68
% Calcium >= 10.2	2%	2%	1%	0%	1%	2%	2%	2%	1%	3%	2%	1%



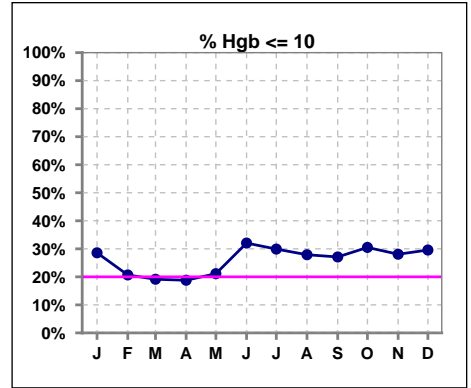
	Jan	Feb	Mar	Apr	May	Jun	Jul	Aug	Sep	Oct	Nov	Dec
# PTH-I	196			212			204			199		
# PTH-I 150 to 600	119			135			132			120		
Pop. Mean	505			437			466			445		
Std. Deviation	358			307			398			306		
% PTH-I 150 to 600	61%			64%			65%			60%		



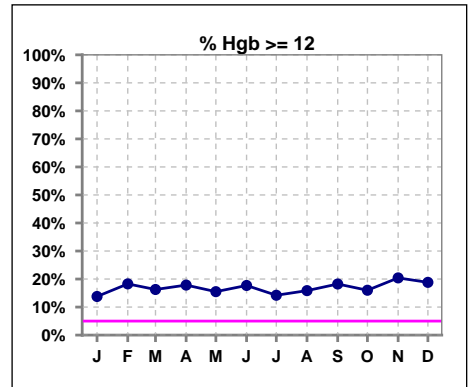
Methodology: a) KtV, CRCL and nPNa values are 4 month rolling mean of last value for each month, all other report lab results are based on last value of month; b) BP's are average of all values for month.

IV. ANEMIA

	Jan	Feb	Mar	Apr	May	Jun	Jul	Aug	Sep	Oct	Nov	Dec
# Hgb	196	208	209	213	213	209	204	208	203	200	196	186
# Hgb <= 10	56	43	40	40	45	67	61	58	55	61	55	55
Pop. Mean	10.6	10.8	10.9	11.0	10.8	10.7	10.6	10.7	10.8	10.8	10.8	10.8
Std. Deviation	1.4	1.3	1.3	1.2	1.2	1.3	1.4	1.4	1.4	1.4	1.4	1.4
% Hgb <= 10	29%	21%	19%	19%	21%	32%	30%	28%	27%	31%	28%	30%



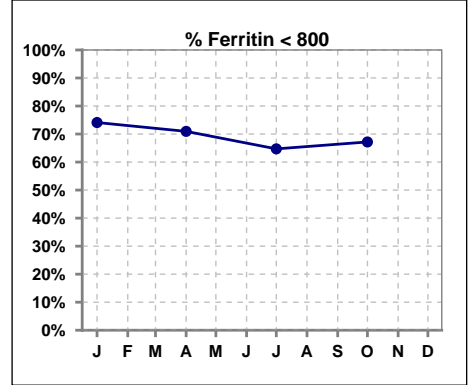
	Jan	Feb	Mar	Apr	May	Jun	Jul	Aug	Sep	Oct	Nov	Dec
# Hgb	196	208	209	213	213	209	204	208	203	200	196	186
# Hgb >= 12	27	38	34	38	33	37	29	33	37	32	40	35
Pop. Mean	10.6	10.8	10.9	11.0	10.8	10.7	10.6	10.7	10.8	10.8	10.8	10.8
Std. Deviation	1.4	1.3	1.3	1.2	1.2	1.3	1.4	1.4	1.4	1.4	1.4	1.4
% Hgb >= 12	14%	18%	16%	18%	15%	18%	14%	16%	18%	16%	20%	19%



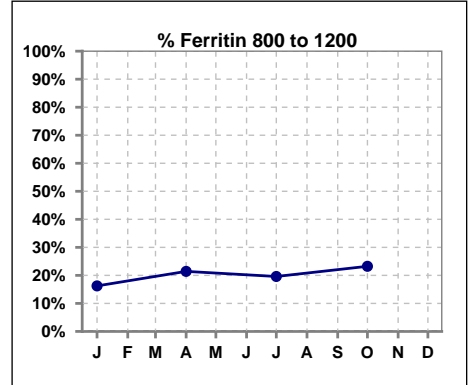
IV. ANEMIA - CONT.

Iron Profile

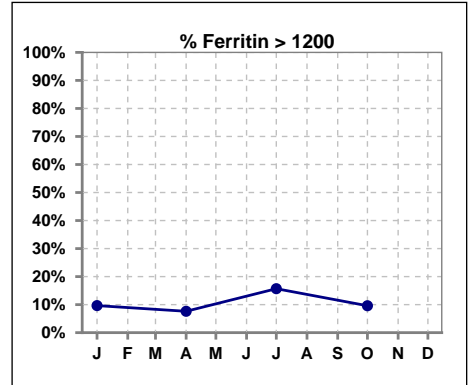
	Jan	Feb	Mar	Apr	May	Jun	Jul	Aug	Sep	Oct	Nov	Dec
# Ferritin	197			210			204			198		
# Ferritin < 800	146			149			132			133		
Pop. Mean	638			648			736			657		
Std. Deviation	550			515			488			428		
% Ferritin < 800	74%			71%			65%			67%		



	Jan	Feb	Mar	Apr	May	Jun	Jul	Aug	Sep	Oct	Nov	Dec
# Ferritin	197			210			204			198		
# Ferritin 800 to 1200	32			45			40			46		
Pop. Mean	638			648			736			657		
Std. Deviation	550			515			488			428		
% Ferritin 800 to 1200	16%			21%			20%			23%		

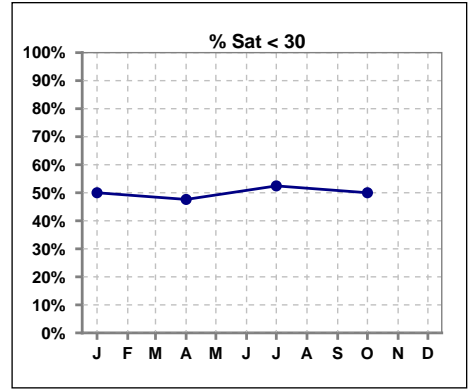


	Jan	Feb	Mar	Apr	May	Jun	Jul	Aug	Sep	Oct	Nov	Dec
# Ferritin	197			210			204			198		
# Ferritin > 1200	19			16			32			19		
Pop. Mean	638			648			736			657		
Std. Deviation	550			515			488			428		
% Ferritin > 1200	10%			8%			16%			10%		

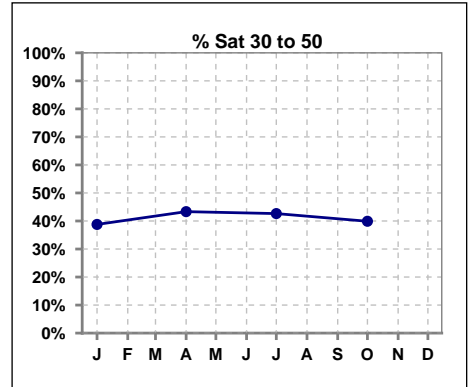


IV. ANEMIA - CONT.

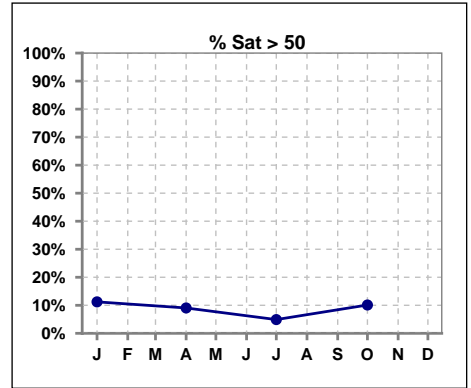
	Jan	Feb	Mar	Apr	May	Jun	Jul	Aug	Sep	Oct	Nov	Dec
# % Sat	196			210			204			198		
# % Sat < 30	98			100			107			99		
Pop. Mean	33			33			30			32		
Std. Deviation	17			16			12			15		
% % Sat < 30	50%			48%			52%			50%		



	Jan	Feb	Mar	Apr	May	Jun	Jul	Aug	Sep	Oct	Nov	Dec
# % Sat	196			210			204			198		
# % Sat 30 to 50	76			91			87			79		
Pop. Mean	33			33			30			32		
Std. Deviation	17			16			12			15		
% Sat% 30 to 50	39%			43%			43%			40%		

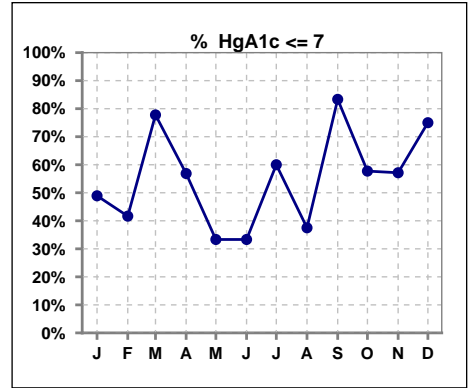


	Jan	Feb	Mar	Apr	May	Jun	Jul	Aug	Sep	Oct	Nov	Dec
# % Sat	196			210			204			198		
# % Sat > 50	22			19			10			20		
Pop. Mean	33			33			30			32		
Std. Deviation	17			16			12			15		
% Sat% > 50	11%			9%			5%			10%		



V. Diabetes

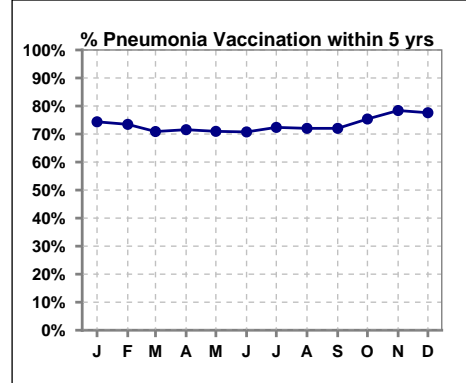
	Jan	Feb	Mar	Apr	May	Jun	Jul	Aug	Sep	Oct	Nov	Dec
# HgA1c	92	12	9	102	3	3	95	8	6	97	7	4
# HgA1c <= 7	45	5	7	58	1	1	57	3	5	56	4	3
Pop. Mean	7.3	7.1	6.6	6.9	7.6	7.2	7.0	7.4	6.8	6.8	6.6	6.3
Std. Deviation	1.42	0.99	0.76	1.36	0.81	0.90	1.31	0.93	2.25	1.08	1.01	1.36
% HgA1c <= 7	49%	42%	78%	57%	33%	33%	60%	38%	83%	58%	57%	75%



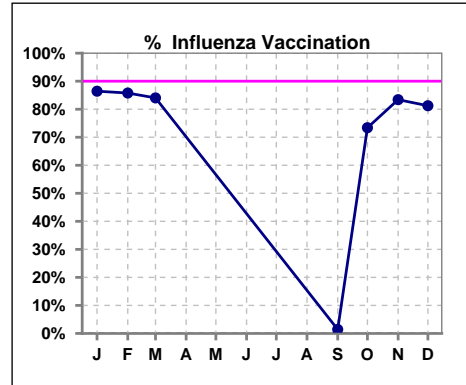
VI. Infection Control

Pneumonia vaccination within the past five years

	Jan	Feb	Mar	Apr	May	Jun	Jul	Aug	Sep	Oct	Nov	Dec
# Patient	199	211	213	218	217	212	210	211	211	203	199	192
# Pneumonia	148	155	151	156	154	150	152	152	152	153	156	149
% Pneumonia	74%	73%	71%	72%	71%	71%	72%	72%	72%	75%	78%	78%



	Jan	Feb	Mar	Apr	May	Jun	Jul	Aug	Sep	Oct	Nov	Dec
# Patient	199	211	213						211	203	199	192
# Influenza	172	181	179						3	149	166	156
% Influenza	86%	86%	84%						1%	73%	83%	81%



Exit Site Infection Rate

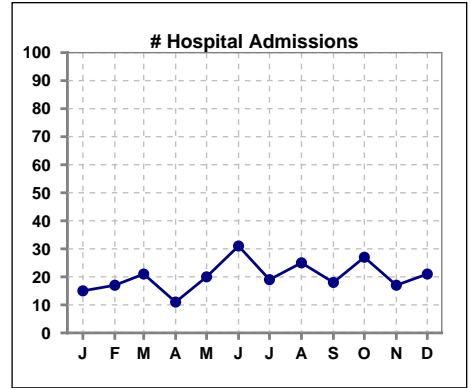
	Jan	Feb	Mar	Apr	May	Jun	Jul	Aug	Sep	Oct	Nov	Dec
Current Month	214.07	0	0	72.62	113.92	0	111.88	222.32	0	108.46	68.95	205.39
Rolling Year-to-date	0.05	0.04	0.04	0.05	0.05	0.05	0.05	0.05	0.05	0.06	0.08	0.07

Peritonitis Infection Rate

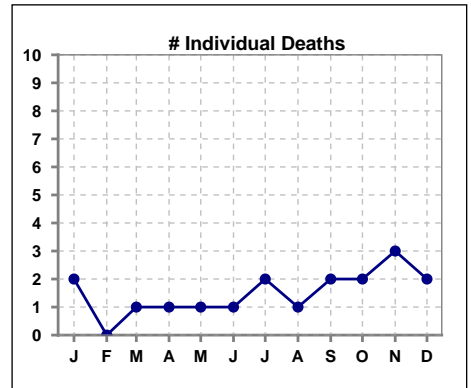
	Jan	Feb	Mar	Apr	May	Jun	Jul	Aug	Sep	Oct	Nov	Dec
Current Month	26.76	97.14	44.44	43.57	28.48	44.13	44.75	37.05	72.31	30.99	103.42	41.08
Rolling Year-to-date	0.38	0.35	0.33	0.32	0.35	0.34	0.36	0.36	0.33	0.31	0.30	0.30

VIII. Outcome measures

	Jan	Feb	Mar	Apr	May	Jun	Jul	Aug	Sep	Oct	Nov	Dec
# Patient	199	211	213	218	217	212	210	211	211	203	199	192
# Hospital Admissions	15	17	21	11	20	31	19	25	18	27	17	21



	Jan	Feb	Mar	Apr	May	Jun	Jul	Aug	Sep	Oct	Nov	Dec
# Patient	199	211	213	218	217	212	210	211	211	203	199	192
# Individual Deaths	2	0	1	1	1	1	2	1	2	2	3	2



	Jan	Feb	Mar	Apr	May	Jun	Jul	Aug	Sep	Oct	Nov	Dec
# Patient	199	211	213	218	217	212	210	211	211	203	199	192
# Transplants	3	0	0	0	1	0	3	0	1	1	0	1

