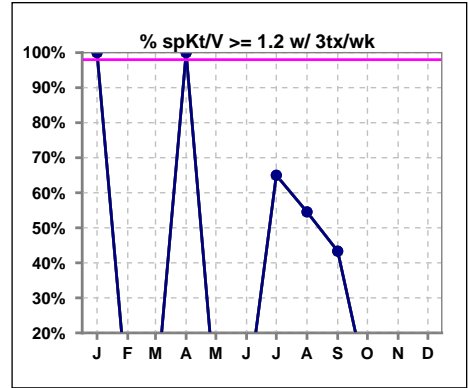
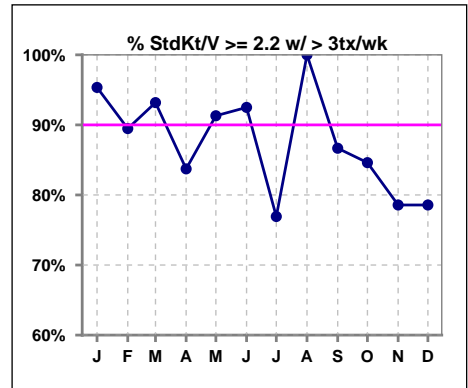


I. ADEQUACY OF DIALYSIS

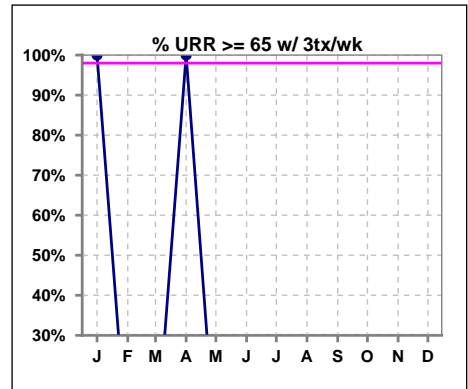
	Jan	Feb	Mar	Apr	May	Jun	Jul	Aug	Sep	Oct	Nov	Dec
# spKt/V w/3tx/wk	1	0	0	1	1	1	20	44	30	22	23	22
# spKt/V>=1.2 w/3tx/wk	1	0	0	1	0	0	13	24	13	1	1	1
Pop. Mean	1.59	0	0	1.30	0.77	0.85	6.03	4.56	4.07	0.85	0.82	0.87
Std. Deviation	0	0	0	0	0	0	3.99	4.00	4.00	0.17	0.18	0.18
% >=1.2 w/3tx/wk	100%	0%	0%	100%	0%	0%	65%	55%	43%	5%	4%	5%



	Jan	Feb	Mar	Apr	May	Jun	Jul	Aug	Sep	Oct	Nov	Dec
# StdKt/V w/>3tx/wk	43	38	44	43	46	40	13	15	15	13	14	14
# >= 2.2 w/>3tx/wk	41	34	41	36	42	37	10	15	13	11	11	11
Pop. Mean	2.58	2.53	2.59	2.51	2.48	2.48	2.38	2.50	2.43	2.50	2.43	2.47
Std. Deviation	0.34	0.31	0.44	0.43	0.22	0.30	0.26	0.21	0.23	0.25	0.24	0.32
% >= 2.2 w/>3tx/wk	95%	89%	93%	84%	91%	93%	77%	100%	87%	85%	79%	79%



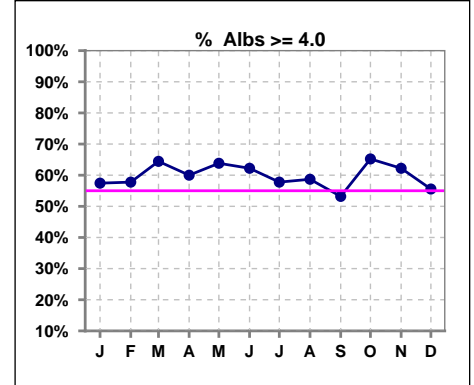
	Jan	Feb	Mar	Apr	May	Jun	Jul	Aug	Sep	Oct	Nov	Dec
# URR w/ 3tx/wk	1	0	0	1	1	1	28	31	32	28	29	30
# URR>=65 w/ 3tx/wk	1	0	0	1	0	0	0	4	2	1	1	0
Pop. Mean	76	0	0	68	51	54	51	54	51	52	50	51
Std. Deviation	0	0	0	0	0	0	8.83	8.66	7.08	6.96	7.91	7.48
% URR>=65 w/ 3tx/wk	100%	0%	0%	100%	0%	0%	0%	13%	6%	4%	3%	0%



*Albumin values use BCG method - as of July 2001

II. NUTRITION

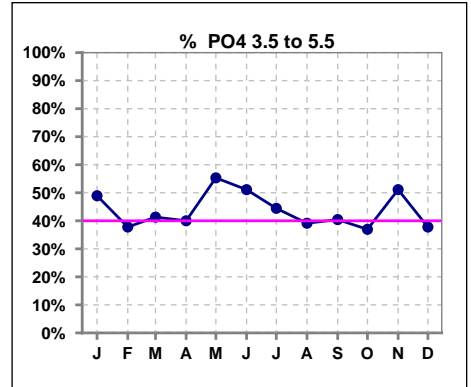
	Jan	Feb	Mar	Apr	May	Jun	Jul	Aug	Sep	Oct	Nov	Dec
# Albumin	47	45	45	45	47	45	45	46	47	46	45	45
# Albumin >= 4.0	27	26	29	27	30	28	26	27	25	30	28	25
Pop. Mean	4.1	4.1	4.0	4.1	4.0	4.0	4.0	4.0	4.0	4.1	4.0	4.0
Std. Deviation	0.36	0.33	0.30	0.42	0.41	0.36	0.41	0.39	0.31	0.35	0.43	0.36
% Alb >= 4.0	57%	58%	64%	60%	64%	62%	58%	59%	53%	65%	62%	56%



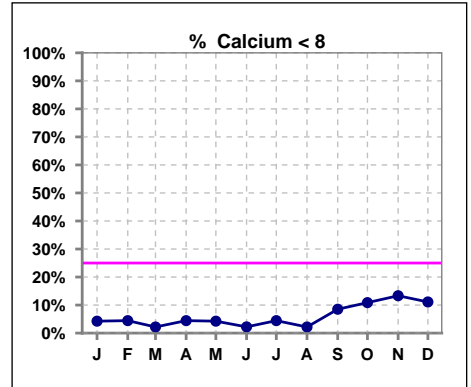
Lab methodology for PTH changed January 2012

III. OSTEODYSTROPHY

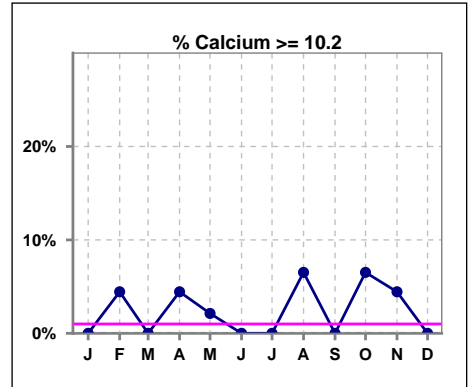
	Jan	Feb	Mar	Apr	May	Jun	Jul	Aug	Sep	Oct	Nov	Dec
# PO4	47	45	46	45	47	45	45	46	47	46	45	45
# PO4 3.5 to 5.5	23	17	19	18	26	23	20	18	19	17	23	17
Pop. Mean	5.3	5.4	5.7	5.7	5.5	5.6	5.9	5.9	5.9	5.7	5.8	6.0
Std. Deviation	1.41	1.78	1.79	1.80	1.58	1.44	1.83	1.91	1.81	1.36	1.45	1.76
% PO4 3.5 to 5.5	49%	38%	41%	40%	55%	51%	44%	39%	40%	37%	51%	38%



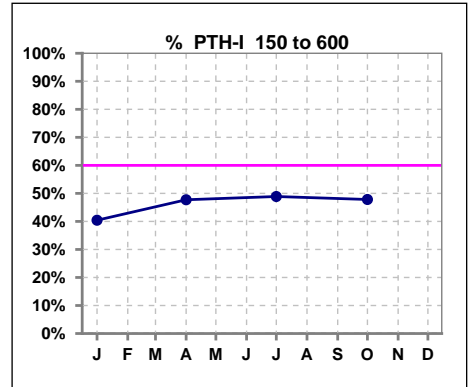
	Jan	Feb	Mar	Apr	May	Jun	Jul	Aug	Sep	Oct	Nov	Dec
# Calcium	47	45	46	45	47	45	45	46	47	46	45	45
# Calcium <= 8	2	2	1	2	2	1	2	1	4	5	6	5
Pop. Mean	9.2	9.1	9.1	9.2	9.2	9.2	9.2	9.3	9.0	9.1	9.0	8.9
Std. Deviation	0.62	0.71	0.57	0.61	0.60	0.54	0.66	0.69	0.81	0.82	0.80	0.74
% Calcium <= 8	4%	4%	2%	4%	4%	2%	4%	2%	9%	11%	13%	11%



	Jan	Feb	Mar	Apr	May	Jun	Jul	Aug	Sep	Oct	Nov	Dec
# Calcium	47	45	46	45	47	45	45	46	47	46	45	45
# Calcium > 10.2	0	2	0	2	1	0	0	3	0	3	2	0
Pop. Mean	9.2	9.1	9.1	9.2	9.2	9.2	9.2	9.3	9.0	9.1	9.0	8.9
Std. Deviation	0.62	0.71	0.57	0.61	0.60	0.54	0.66	0.69	0.81	0.82	0.80	0.74
% Calcium > 10.2	0%	4%	0%	4%	2%	0%	0%	7%	0%	7%	4%	0%



	Jan	Feb	Mar	Apr	May	Jun	Jul	Aug	Sep	Oct	Nov	Dec
# PTH-I	47			44			45			46		
# PTH-I 150 to 600	19			21			22			22		
Pop. Mean	681			756			640			668		
Std. Deviation	584			830			528			570		
% PTH-I 150 to 600	40%			48%			49%			48%		

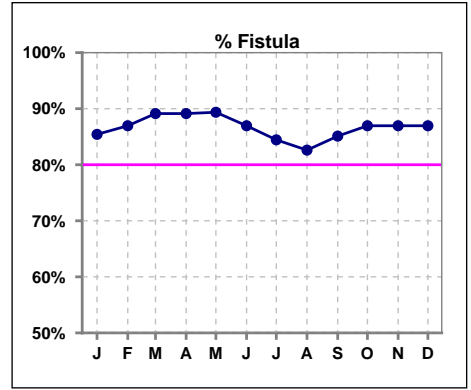


Methodology: a) All labs for 'Adequacy of Dialysis', 'Nutrition', 'Osteodystrophy' and 'Anemia' based on last value of month; b) Access data takes last access of month; c) Values for 'Infection Control' uses most recent result.

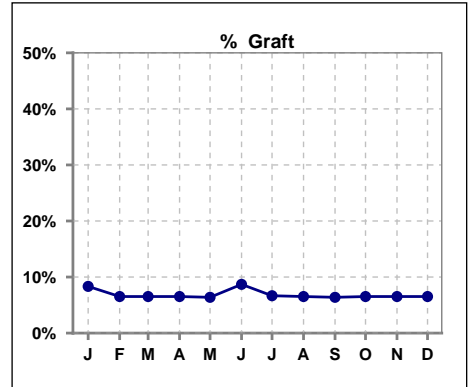
Northwest Kidney Centers - Home Hemodialysis
Quality Assurance Reports
 Through period ending Dec. 31, 2019

IV. ACCESS

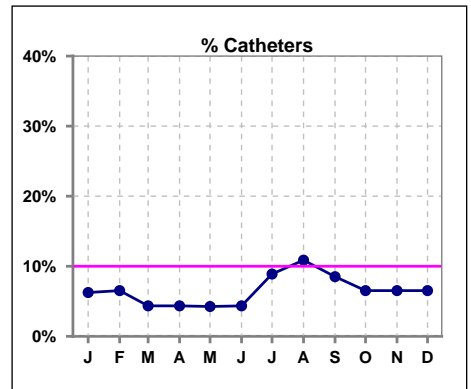
	Jan	Feb	Mar	Apr	May	Jun	Jul	Aug	Sep	Oct	Nov	Dec
# Access	26	27	44	43	45	37	45	46	47	46	46	46
# Fistula	41	40	41	41	42	40	38	38	40	40	40	40
% Fistula	85%	87%	89%	89%	89%	87%	84%	83%	85%	87%	87%	87%



	Jan	Feb	Mar	Apr	May	Jun	Jul	Aug	Sep	Oct	Nov	Dec
# Access	26	27	44	43	45	37	45	46	47	46	46	46
# Graft	4	3	3	3	3	4	3	3	3	3	3	3
% Graft	8%	7%	7%	7%	6%	9%	7%	7%	6%	7%	7%	7%



	Jan	Feb	Mar	Apr	May	Jun	Jul	Aug	Sep	Oct	Nov	Dec
# Access	26	27	44	43	45	37	45	46	47	46	46	46
# Catheters	3	3	2	2	2	2	4	5	4	3	3	3
% Catheters	6%	7%	4%	4%	4%	4%	9%	11%	9%	7%	7%	7%



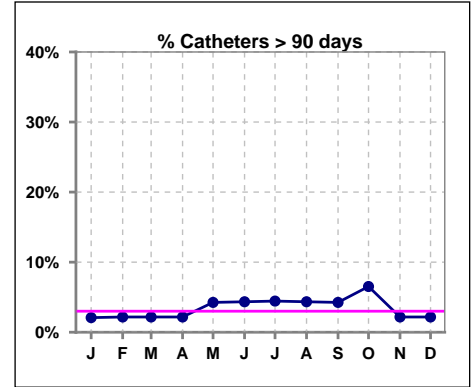
Methodology: a) All labs for 'Adequacy of Dialysis', 'Nutrition', 'Osteodystrophy' and 'Anemia' based on last value of month; b) Access data takes last access of month; c) Values for 'Infection Control' uses most recent result.

IV. ACCESS - CONT.

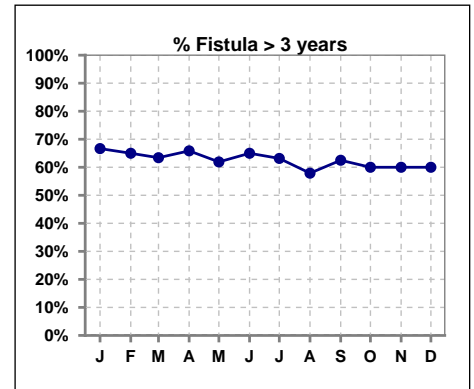
Catheters > 90 days

	Jan	Feb	Mar	Apr	May	Jun	Jul	Aug	Sep	Oct	Nov	Dec
# Access	48	46	46	46	47	46	45	46	47	46	46	46
# Catheters	1	1	1	1	2	2	2	2	2	3	1	1
% Catheters	2%	2%	2%	2%	4%	4%	4%	4%	4%	7%	2%	2%

Definition: Catheter in use on last treatment of the month

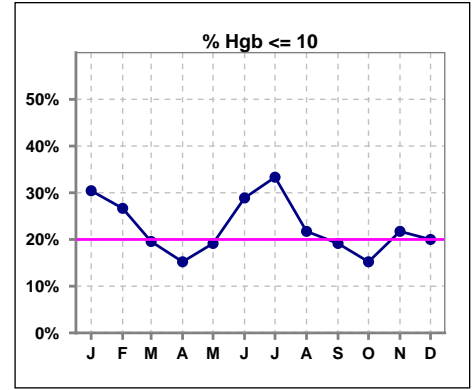


	Jan	Feb	Mar	Apr	May	Jun	Jul	Aug	Sep	Oct	Nov	Dec
# Fistula	42	40	41	41	42	40	38	38	40	40	40	40
# Fistula > 3 yrs	28	26	26	27	26	26	24	22	25	24	24	24
% Fistula > 3 yrs	67%	65%	63%	66%	62%	65%	63%	58%	63%	60%	60%	60%

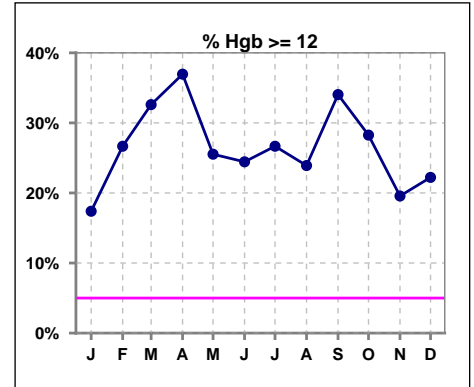


V. ANEMIA

	Jan	Feb	Mar	Apr	May	Jun	Jul	Aug	Sep	Oct	Nov	Dec
# Hgb	46	45	46	46	47	45	45	46	47	46	46	45
# Hgb <= 10	14	12	9	7	9	13	15	10	9	7	10	9
Pop. Mean	10.9	10.9	11.3	11.5	11.3	11.0	10.8	11.1	11.4	11.4	11.1	11.0
Std. Deviation	1.4	1.9	1.4	1.6	1.7	1.7	1.9	1.6	1.5	1.6	1.6	1.6
% Hgb <= 10	30%	27%	20%	15%	19%	29%	33%	22%	19%	15%	22%	20%



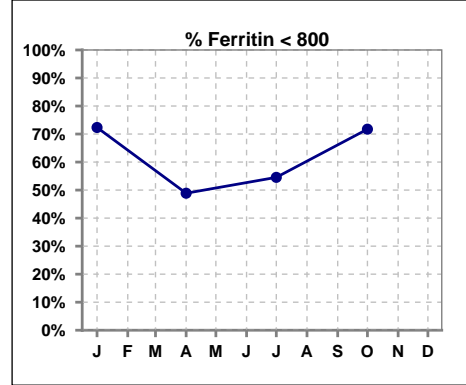
	Jan	Feb	Mar	Apr	May	Jun	Jul	Aug	Sep	Oct	Nov	Dec
# Hgb	46	45	46	46	47	45	45	46	47	46	46	45
# Hgb >= 12	8	12	15	17	12	11	12	11	16	13	9	10
Pop. Mean	10.9	10.9	11.3	11.5	11.3	11.0	10.8	11.1	11.4	11.4	11.1	11.0
Std. Deviation	1.4	1.9	1.4	1.6	1.7	1.7	1.9	1.6	1.5	1.6	1.6	1.6
% Hgb >= 12	17%	27%	33%	37%	26%	24%	27%	24%	34%	28%	20%	22%



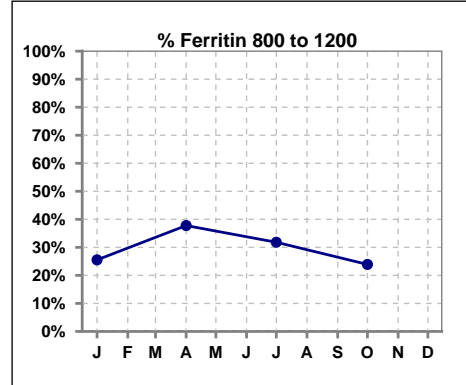
V. ANEMIA - CONT.

Iron Profile

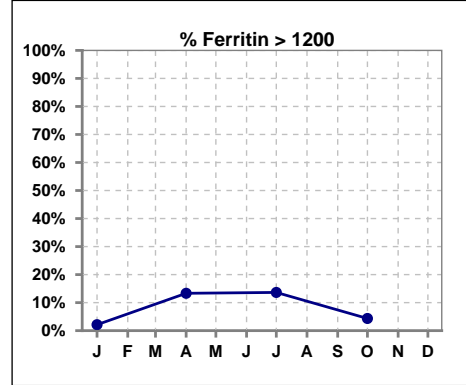
	Jan	Feb	Mar	Apr	May	Jun	Jul	Aug	Sep	Oct	Nov	Dec
# Ferritin	47			45			44			46		
# Ferritin < 800	34			22			24			33		
Pop. Mean	582			722			728			656		
Std. Deviation	358			457			539			428		
% Ferritin < 800	72%			49%			55%			72%		



	Jan	Feb	Mar	Apr	May	Jun	Jul	Aug	Sep	Oct	Nov	Dec
# Ferritin	47			45			44			46		
# Ferritin 800 to 1200	12			17			14			11		
Pop. Mean	582			722			728			656		
Std. Deviation	358			457			539			428		
% Ferritin 800 to 1200	26%			38%			32%			24%		

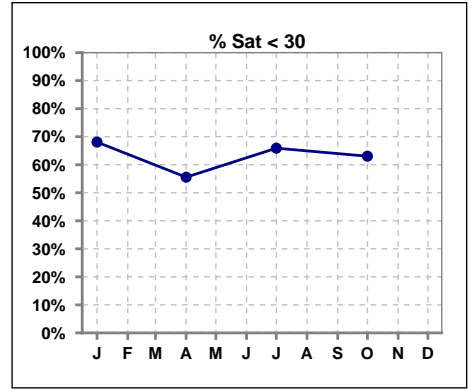


	Jan	Feb	Mar	Apr	May	Jun	Jul	Aug	Sep	Oct	Nov	Dec
# Ferritin	47			45			44			46		
# Ferritin > 1200	1			6			6			2		
Pop. Mean	582			722			728			656		
Std. Deviation	358			457			539			428		
% Ferritin > 1200	2%			13%			14%			4%		

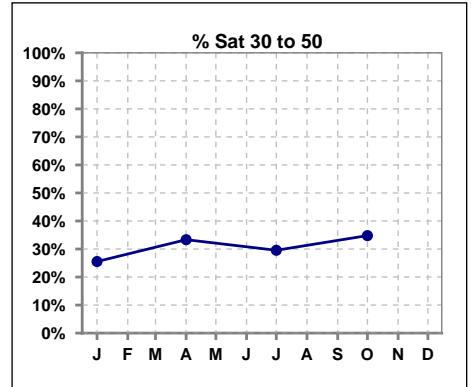


V. ANEMIA - CONT.

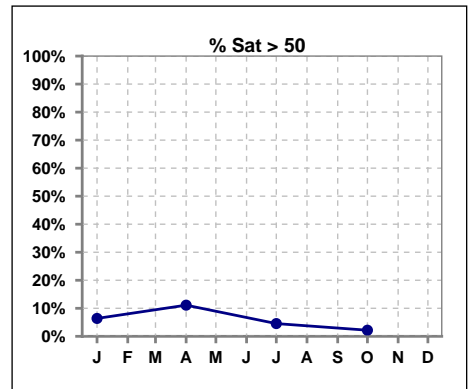
	Jan	Feb	Mar	Apr	May	Jun	Jul	Aug	Sep	Oct	Nov	Dec
# % Sat	47			45			44			46		
# % Sat < 30	32			25			29			29		
Pop. Mean	27			32			29			26		
Std. Deviation	12			19			16			11		
% % Sat < 30	68%			56%			66%			63%		



	Jan	Feb	Mar	Apr	May	Jun	Jul	Aug	Sep	Oct	Nov	Dec
# % Sat	47			45			44			46		
# % Sat 30 to 50	12			15			13			16		
Pop. Mean	27			32			29			26		
Std. Deviation	12			19			16			11		
% Sat% 30 to 50	26%			33%			30%			35%		

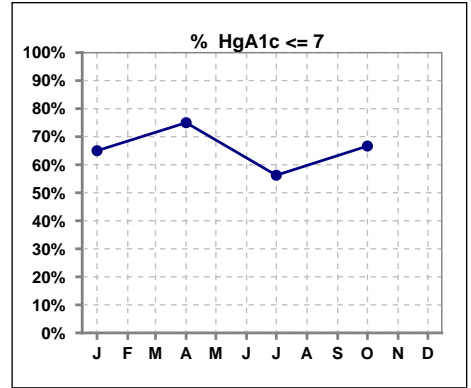


	Jan	Feb	Mar	Apr	May	Jun	Jul	Aug	Sep	Oct	Nov	Dec
# % Sat	47			45			44			46		
# % Sat > 50	3			5			2			1		
Pop. Mean	27			32			29			26		
Std. Deviation	12			19			16			11		
% % Sat > 50	6%			11%			5%			2%		



VI. Diabetes

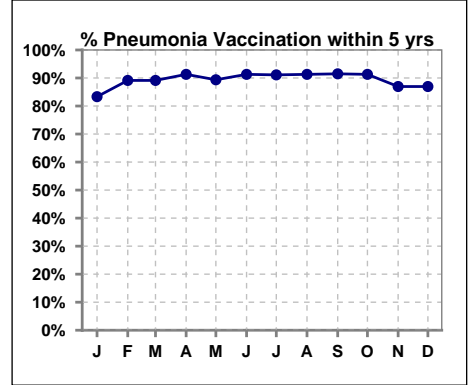
	Jan	Feb	Mar	Apr	May	Jun	Jul	Aug	Sep	Oct	Nov	Dec
# HgA1c	20			20			16			18		
# HgA1c <= 7	13			15			9			12		
Pop. Mean	6.8			6.9			7.5			7.0		
Std. Deviation	1.44			1.68			2.32			2.19		
% HgA1c <= 7	65%			75%			56%			67%		



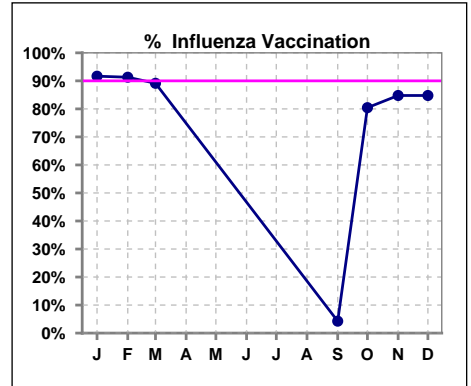
VII. Infection Control

Pneumonia vaccination within the past five years

	Jan	Feb	Mar	Apr	May	Jun	Jul	Aug	Sep	Oct	Nov	Dec
# Patient	48	46	46	46	47	46	45	46	47	46	46	46
# Pneumonia	40	41	41	42	42	42	41	42	43	42	40	40
% Pneumonia	83%	89%	89%	91%	89%	91%	91%	91%	91%	91%	87%	87%



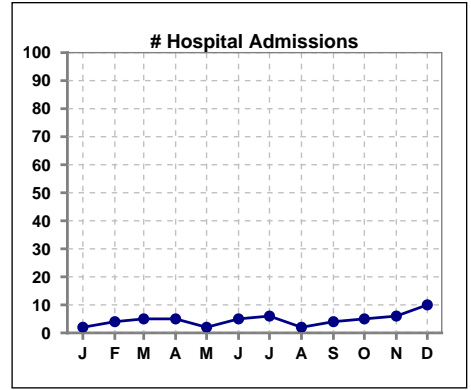
	Jan	Feb	Mar	Apr	May	Jun	Jul	Aug	Sep	Oct	Nov	Dec
# Patient	48	46	46						47	46	46	46
# Influenza	44	42	41						2	37	39	39
% Influenza	92%	91%	89%						4%	80%	85%	85%



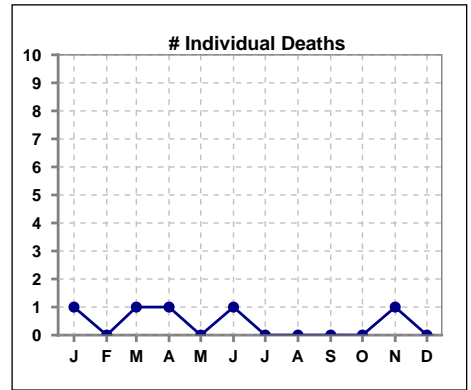
Methodology: a) All labs for 'Adequacy of Dialysis', 'Nutrition', 'Osteodystrophy' and 'Anemia' based on last value of month; b) Access data takes last access of month; c) Values for 'Infection Control' uses most recent result.

VIII. Outcome measures

	Jan	Feb	Mar	Apr	May	Jun	Jul	Aug	Sep	Oct	Nov	Dec
# Patient	48	46	46	46	47	46	45	46	47	46	46	46
# Hospital Admissions	2	4	5	5	2	5	6	2	4	5	6	10



	Jan	Feb	Mar	Apr	May	Jun	Jul	Aug	Sep	Oct	Nov	Dec
# Patient	48	46	46	46	47	46	45	46	47	46	46	46
# Individual Deaths	1	0	1	1	0	1	0	0	0	0	1	0



	Jan	Feb	Mar	Apr	May	Jun	Jul	Aug	Sep	Oct	Nov	Dec
# Patient	48	46	46	46	47	46	45	46	47	46	46	46
# Transplants	0	0	0	0	1	1	0	0	2	0	0	0

