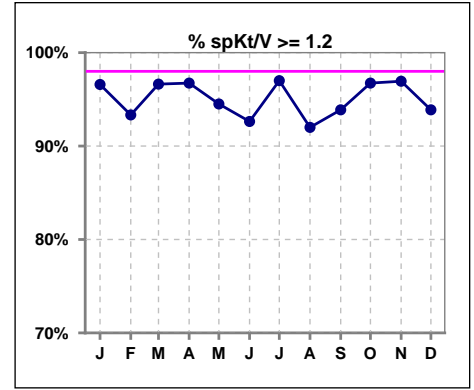
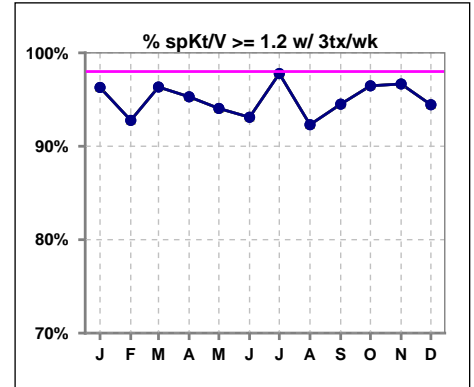


I. ADEQUACY OF DIALYSIS

	Jan	Feb	Mar	Apr	May	Jun	Jul	Aug	Sep	Oct	Nov	Dec
# spKt/V	88	90	89	92	91	95	100	100	98	92	98	98
# spKt/V >= 1.2	85	84	86	89	86	88	97	92	92	89	95	92
Pop. Mean	1.62	1.59	1.58	1.62	1.60	1.59	1.63	1.64	1.63	1.62	1.64	1.62
Std. Deviation	0.29	0.30	0.29	0.34	0.32	0.30	0.31	0.37	0.34	0.27	0.27	0.30
% spKt/V >= 1.2	97%	93%	97%	97%	95%	93%	97%	92%	94%	97%	97%	94%

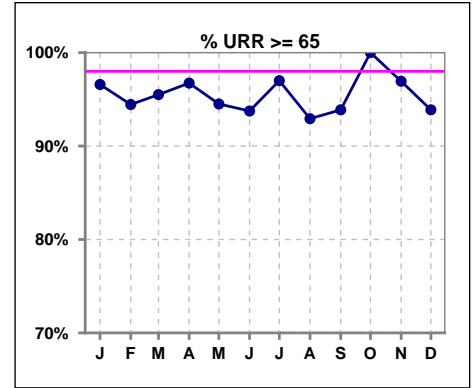


	Jan	Feb	Mar	Apr	May	Jun	Jul	Aug	Sep	Oct	Nov	Dec
# spKt/V w/ 3tx/wk	81	83	82	85	84	87	90	91	91	85	90	90
# spKt/V >= 1.2 w/3tx/wk	78	77	79	81	79	81	88	84	86	82	87	85
Pop. Mean	1.63	1.60	1.58	1.63	1.61	1.61	1.65	1.66	1.64	1.62	1.65	1.64
Std. Deviation	0.30	0.31	0.29	0.34	0.32	0.30	0.31	0.37	0.33	0.28	0.27	0.29
% >= 1.2 w/3tx/wk	96%	93%	96%	95%	94%	93%	98%	92%	95%	96%	97%	94%

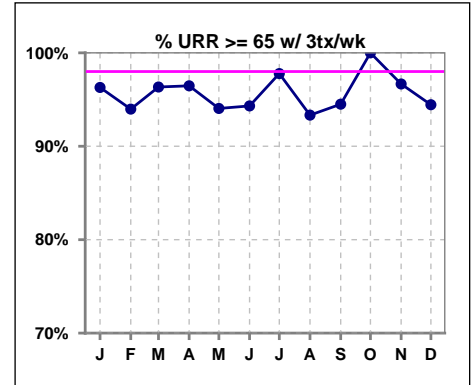


I. ADEQUACY OF DIALYSIS - CONT.

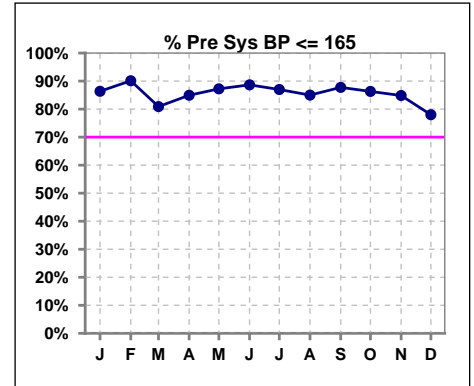
	Jan	Feb	Mar	Apr	May	Jun	Jul	Aug	Sep	Oct	Nov	Dec
# URR	88	90	89	92	91	96	100	99	98	92	98	98
# URR >= 65	85	85	85	89	86	90	97	92	92	92	95	92
Pop. Mean	75	74	74	75	74	74	75	75	75	75	75	75
Std. Deviation	6.41	6.91	6.53	6.49	6.55	6.53	6.58	8.21	7.38	5.38	5.52	7.17
% URR >= 65	97%	94%	96%	97%	95%	94%	97%	93%	94%	100%	97%	94%



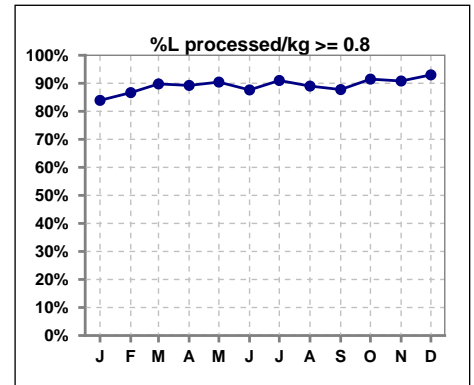
	Jan	Feb	Mar	Apr	May	Jun	Jul	Aug	Sep	Oct	Nov	Dec
# URR w/ 3tx/wk	81	83	82	85	84	88	90	90	91	85	90	90
# URR>=65 w/ 3tx/wk	78	78	79	82	79	83	88	84	86	85	87	85
Pop. Mean	75	74	74	75	74	75	75	76	75	75	75	75
Std. Deviation	6.44	7.00	6.59	6.52	6.62	6.25	6.55	7.72	7.00	5.52	5.56	6.30
% URR>=65 w/ 3tx/wk	96%	94%	96%	96%	94%	94%	98%	93%	95%	100%	97%	94%



	Jan	Feb	Mar	Apr	May	Jun	Jul	Aug	Sep	Oct	Nov	Dec
# Pre Sys BP	88	91	89	93	94	97	100	100	98	95	99	100
# Pre Sys BP <= 165	76	82	74	79	82	89	89	87	87	84	85	78
Pop. Mean	145	145	145	144	142	139	142	143	141	143	143	146
Std. Deviation	19.3	18.8	20.7	19.3	20.5	18.9	19.9	20.2	19.4	19.6	19.4	19.8
% Pre Sys BP <=165	86%	90%	81%	85%	87%	89%	87%	85%	88%	86%	85%	78%



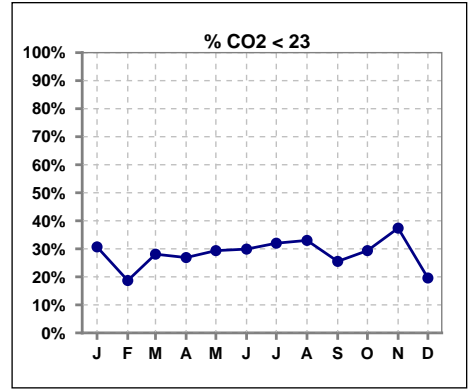
	Jan	Feb	Mar	Apr	May	Jun	Jul	Aug	Sep	Oct	Nov	Dec
# L processed/kg	87	90	88	93	94	97	100	100	98	94	98	100
# L processed/kg>=0.8	73	78	79	83	85	85	91	89	86	86	89	93
Pop. Mean	1	1	1	1	1	1	1	1	1	1	1	1
Std. Deviation	0.3	0.3	0.3	0.3	0.3	0.3	0.3	0.3	0.3	0.3	0.3	0.3
% L processed/kg>=0.8	84%	87%	90%	89%	90%	88%	91%	89%	88%	91%	91%	93%



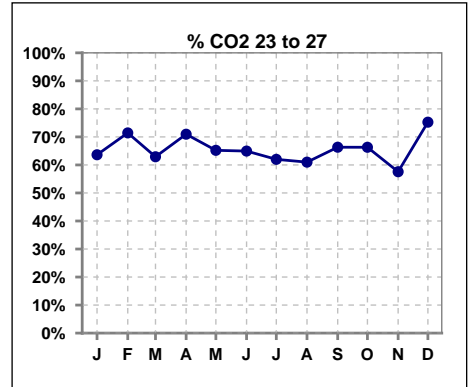
Methodology: a) All labs for 'Adequacy of Dialysis', 'Nutrition', 'Osteodystrophy', 'Anemia' and 'Diabetes' based on last value of month; b) BP's and #L processed are average of all values for month; c) Access data takes last access of month; d) Values for SGA and 'Infection Control' use most recent result.

I. ADEQUACY OF DIALYSIS - CONT.

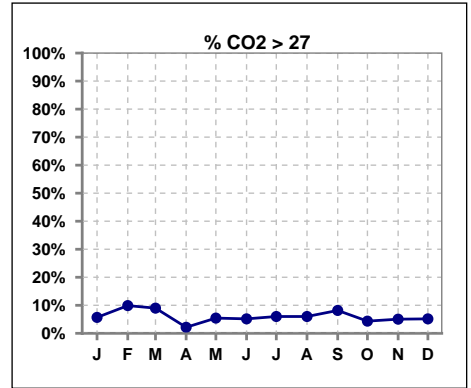
	Jan	Feb	Mar	Apr	May	Jun	Jul	Aug	Sep	Oct	Nov	Dec
# CO2	88	91	89	93	92	97	100	100	98	92	99	97
# CO2 < 23	27	17	25	25	27	29	32	33	25	27	37	19
Pop. Mean	24	24	24	24	24	23	24	24	24	24	23	24
Std. Deviation	2.69	2.56	2.72	2.27	2.95	2.91	2.69	2.72	2.75	2.34	2.92	2.67
% CO2 < 23	31%	19%	28%	27%	29%	30%	32%	33%	26%	29%	37%	20%



	Jan	Feb	Mar	Apr	May	Jun	Jul	Aug	Sep	Oct	Nov	Dec
# CO2	88	91	89	93	92	97	100	100	98	92	99	97
# CO2 23 to 27	56	65	56	66	60	63	62	61	65	61	57	73
Pop. Mean	24	24	24	24	24	23	24	24	24	24	23	24
Std. Deviation	2.69	2.56	2.72	2.27	2.95	2.91	2.69	2.72	2.75	2.34	2.92	2.67
% CO2 23 to 27	64%	71%	63%	71%	65%	65%	62%	61%	66%	66%	58%	75%



	Jan	Feb	Mar	Apr	May	Jun	Jul	Aug	Sep	Oct	Nov	Dec
# CO2	88	91	89	93	92	97	100	100	98	92	99	97
# CO2 > 27	5	9	8	2	5	5	6	6	8	4	5	5
Pop. Mean	24	24	24	24	24	23	24	24	24	24	23	24
Std. Deviation	2.69	2.56	2.72	2.27	2.95	2.91	2.69	2.72	2.75	2.34	2.92	2.67
% CO2 > 27	6%	10%	9%	2%	5%	5%	6%	6%	8%	4%	5%	5%

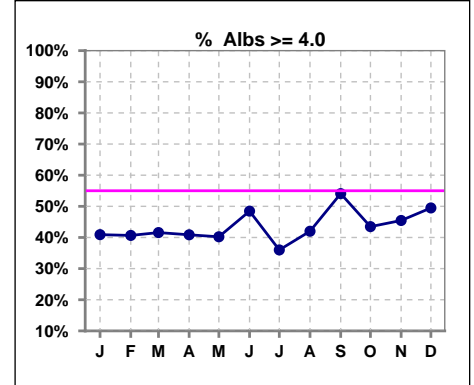


Lake City Kidney Center - Center Hemodialysis
Quality Assurance Reports
 Through period ending Dec. 31, 2021

*Albumin values use BCG method - as of July 2001

II. NUTRITION

	Jan	Feb	Mar	Apr	May	Jun	Jul	Aug	Sep	Oct	Nov	Dec
# Albumin	88	91	89	93	92	97	100	100	98	92	99	97
# Albumin >= 4.0	36	37	37	38	37	47	36	42	53	40	45	48
Pop. Mean	3.8	3.8	3.8	3.9	3.9	3.9	3.8	3.9	3.9	3.8	3.9	3.9
Std. Deviation	0.41	0.37	0.38	0.33	0.34	0.39	0.36	0.35	0.37	0.42	0.40	0.40
% Alb >= 4.0	41%	41%	42%	41%	40%	48%	36%	42%	54%	43%	45%	49%

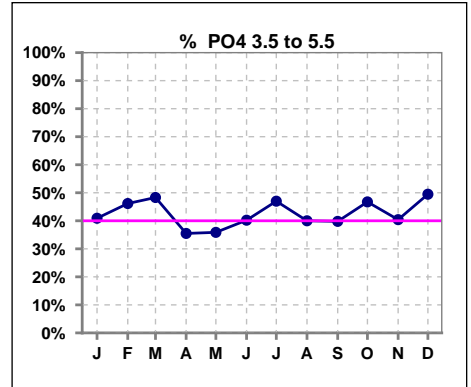


Methodology: a) All labs for 'Adequacy of Dialysis', 'Nutrition', 'Osteodystrophy', 'Anemia' and 'Diabetes' based on last value of month; b) BP's and #L processed are average of all values for month; c) Access data takes last access of month; d) Values for SGA and 'Infection Control' use most recent result.

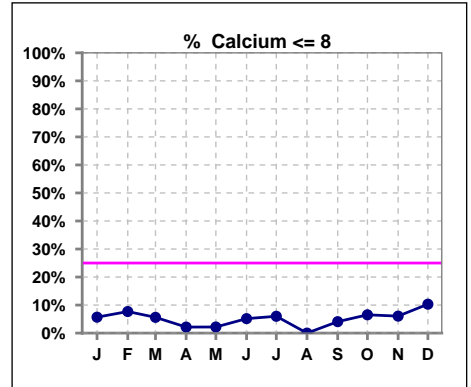
Lab methodology for PTH changed January 2012

III. OSTEODYSTROPHY

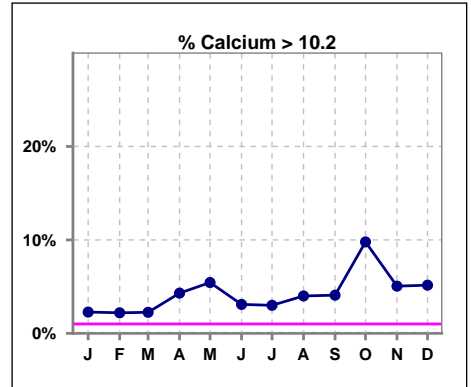
	Jan	Feb	Mar	Apr	May	Jun	Jul	Aug	Sep	Oct	Nov	Dec
# PO4	88	91	89	93	92	97	100	100	98	92	99	97
# PO4 3.5 to 5.5	36	42	43	33	33	39	47	40	39	43	40	48
Pop. Mean	5.9	5.8	6.0	6.0	6.0	6.3	5.7	6.0	6.0	5.8	6.1	5.9
Std. Deviation	1.84	1.93	2.25	1.78	1.67	2.19	1.82	1.91	2.07	1.83	2.07	1.85
% PO4 3.5 to 5.5	41%	46%	48%	35%	36%	40%	47%	40%	40%	47%	40%	49%



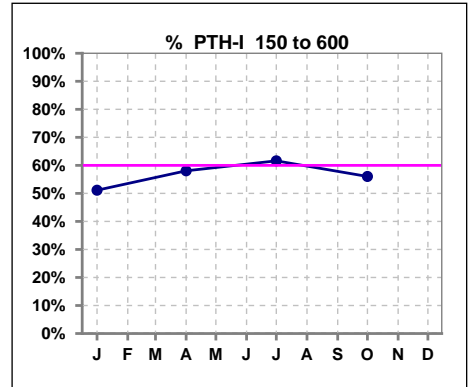
	Jan	Feb	Mar	Apr	May	Jun	Jul	Aug	Sep	Oct	Nov	Dec
# Calcium	88	91	89	93	92	97	100	100	98	92	99	97
# Calcium <= 8	5	7	5	2	2	5	6	0	4	6	6	10
Pop. Mean	9.2	9.2	9.2	9.2	9.3	9.3	9.2	9.2	9.2	9.2	9.2	9.2
Std. Deviation	0.66	0.59	0.70	0.61	0.66	0.63	0.68	0.65	0.68	0.82	0.75	0.78
% Calcium <= 8	6%	8%	6%	2%	2%	5%	6%	0%	4%	7%	6%	10%



	Jan	Feb	Mar	Apr	May	Jun	Jul	Aug	Sep	Oct	Nov	Dec
# Calcium	88	91	89	93	92	97	100	100	98	92	99	97
# Calcium > 10.2	2	2	2	4	5	3	3	4	4	9	5	5
Pop. Mean	9.2	9.2	9.2	9.2	9.3	9.3	9.2	9.2	9.2	9.2	9.2	9.2
Std. Deviation	0.66	0.59	0.70	0.61	0.66	0.63	0.68	0.65	0.68	0.82	0.75	0.78
% Calcium > 10.2	2%	2%	2%	4%	5%	3%	3%	4%	4%	10%	5%	5%



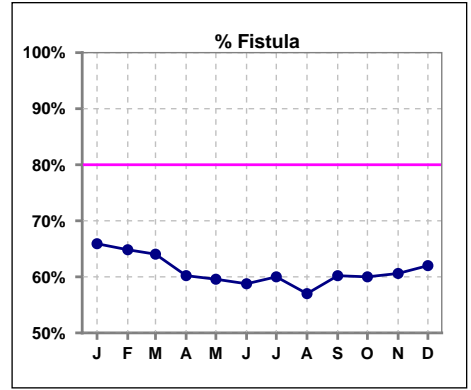
	Jan	Feb	Mar	Apr	May	Jun	Jul	Aug	Sep	Oct	Nov	Dec
# PTH-I	88			93			99			91		
# PTH-I 150 to 600	45			54			61			51		
Pop. Mean	575			502			470			561		
Std. Deviation	581			487			510			644		
% PTH-I 150 to 600	51%			58%			62%			56%		



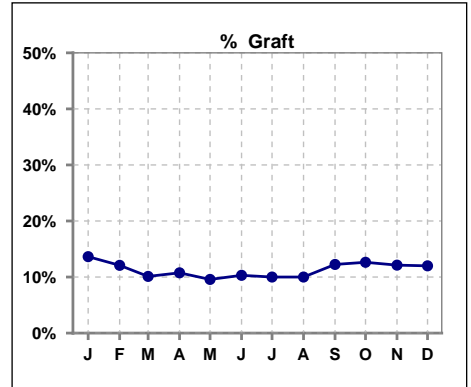
Methodology: a) All labs for 'Adequacy of Dialysis', 'Nutrition', 'Osteodystrophy', 'Anemia' and 'Diabetes' based on last value of month; b) BP's and #L processed are average of all values for month; c) Access data takes last access of month; d) Values for SGA and 'Infection Control' use most recent result.

IV. ACCESS

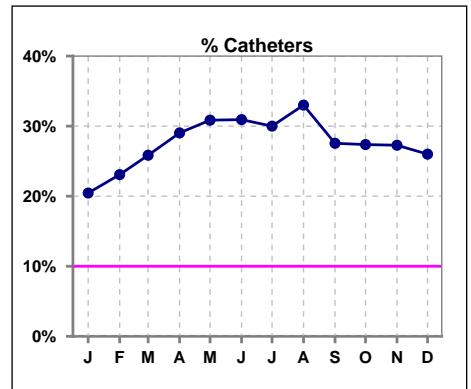
	Jan	Feb	Mar	Apr	May	Jun	Jul	Aug	Sep	Oct	Nov	Dec
# Access	88	91	89	93	94	97	100	100	98	95	99	100
# Fistula	58	59	57	56	56	57	60	57	59	57	60	62
% Fistula	66%	65%	64%	60%	60%	59%	60%	57%	60%	60%	61%	62%



	Jan	Feb	Mar	Apr	May	Jun	Jul	Aug	Sep	Oct	Nov	Dec
# Access	88	91	89	93	94	97	100	100	98	95	99	100
# Graft	12	11	9	10	9	10	10	10	12	12	12	12
% Graft	14%	12%	10%	11%	10%	10%	10%	10%	12%	13%	12%	12%



	Jan	Feb	Mar	Apr	May	Jun	Jul	Aug	Sep	Oct	Nov	Dec
# Access	88	91	89	93	94	97	100	100	98	95	99	100
# Catheters	18	21	23	27	29	30	30	33	27	26	27	26
% Catheters	20%	23%	26%	29%	31%	31%	30%	33%	28%	27%	27%	26%



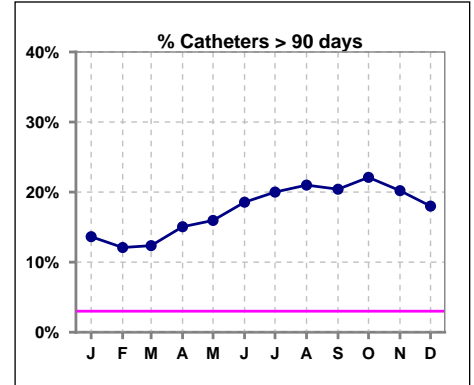
Methodology: a) All labs for 'Adequacy of Dialysis', 'Nutrition', 'Osteodystrophy', 'Anemia' and 'Diabetes' based on last value of month; b) BP's and #L processed are average of all values for month; c) Access data takes last access of month; d) Values for SGA and 'Infection Control' use most recent result.

IV. ACCESS - CONT.

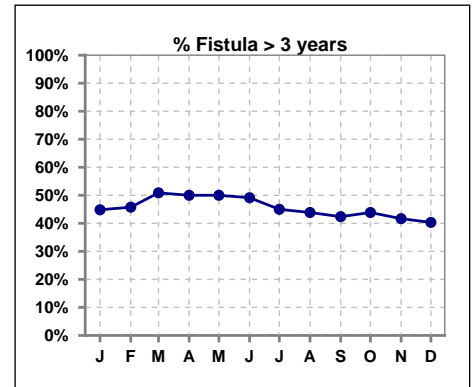
Catheters > 90 days

	Jan	Feb	Mar	Apr	May	Jun	Jul	Aug	Sep	Oct	Nov	Dec
# Access	88	91	89	93	94	97	100	100	98	95	99	100
# Catheters	12	11	11	14	15	18	20	21	20	21	20	18
% Catheters	14%	12%	12%	15%	16%	19%	20%	21%	20%	22%	20%	18%

Definition: Catheter in use on last treatment of the month



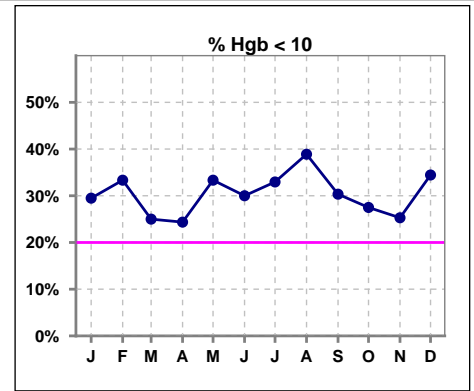
	Jan	Feb	Mar	Apr	May	Jun	Jul	Aug	Sep	Oct	Nov	Dec
# Fistula	58	59	57	56	56	57	60	57	59	57	60	62
# Fistula > 3 yrs	26	27	29	28	28	28	27	25	25	25	25	25
% Fistula > 3 yrs	45%	46%	51%	50%	50%	49%	45%	44%	42%	44%	42%	40%



V. ANEMIA

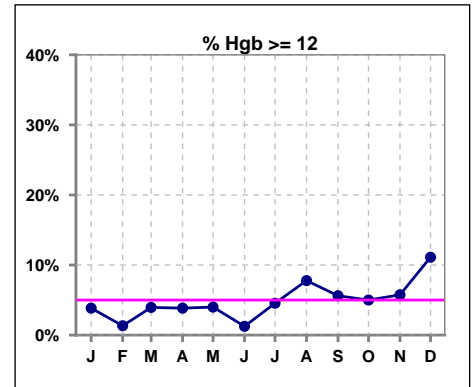
	Jan	Feb	Mar	Apr	May	Jun	Jul	Aug	Sep	Oct	Nov	Dec
# Hgb	78	75	76	78	75	80	88	90	89	80	87	90
# Hgb < 10	23	25	19	19	25	24	29	35	27	22	22	31
Pop. Mean	10.4	10.4	10.5	10.5	10.4	10.2	10.3	10.3	10.4	10.3	10.6	10.5
Std. Deviation	1.3	1.1	1.3	1.2	1.2	1.5	1.3	1.4	1.3	1.2	1.1	1.5
% Hgb < 10	29%	33%	25%	24%	33%	30%	33%	39%	30%	28%	25%	34%

Note: Excludes patients who received no ESA in month.



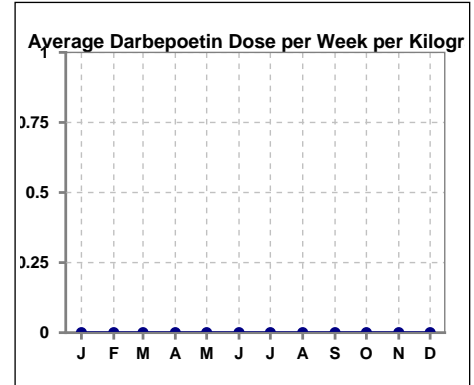
	Jan	Feb	Mar	Apr	May	Jun	Jul	Aug	Sep	Oct	Nov	Dec
# Hgb	78	75	76	78	75	80	88	90	89	80	87	90
# Hgb >= 12	3	1	3	3	3	1	4	7	5	4	5	10
Pop. Mean	10.4	10.4	10.5	10.5	10.4	10.2	10.3	10.3	10.4	10.3	10.6	10.5
Std. Deviation	1.3	1.1	1.3	1.2	1.2	1.5	1.3	1.4	1.3	1.2	1.1	1.5
% Hgb >= 12	4%	1%	4%	4%	4%	1%	5%	8%	6%	5%	6%	11%

Note: Excludes patients who received no ESA in month.



Average Darbepoetin Dose per Week per Kilogram

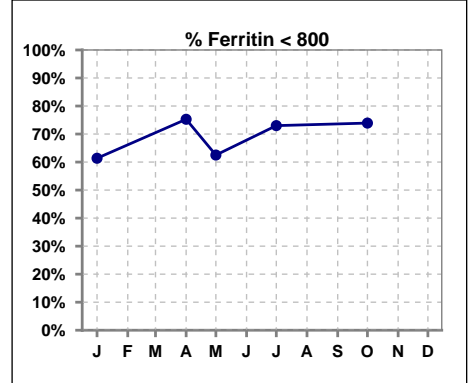
	Jan	Feb	Mar	Apr	May	Jun	Jul	Aug	Sep	Oct	Nov	Dec
# Average Darbepoetin	0	0	0	0	0	0	0	0	0	0	0	0



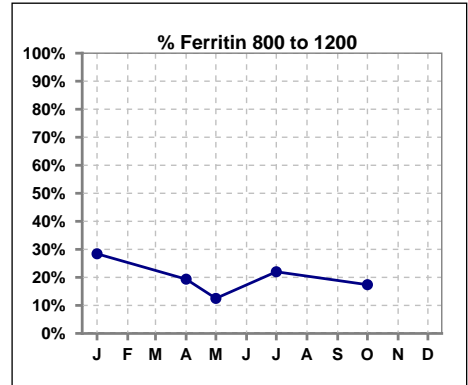
V. ANEMIA - CONT.

Iron Profile

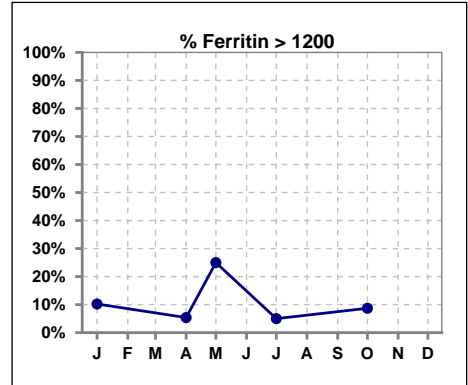
	Jan	Feb	Mar	Apr	May	Jun	Jul	Aug	Sep	Oct	Nov	Dec
# Ferritin	88			93	8		100			92		
# Ferritin < 800	54			70	5		73			68		
Pop. Mean	782			654	1351		631			657		
Std. Deviation	894			828	2409		825			907		
% Ferritin < 800	61%			75%	63%		73%			74%		



	Jan	Feb	Mar	Apr	May	Jun	Jul	Aug	Sep	Oct	Nov	Dec
# Ferritin	88			93	8		100			92		
# Ferritin 800 to 1200	25			18	1		22			16		
Pop. Mean	782			654	1351		631			657		
Std. Deviation	894			828	2409		825			907		
% Ferritin 800 to 1200	28%			19%	13%		22%			17%		



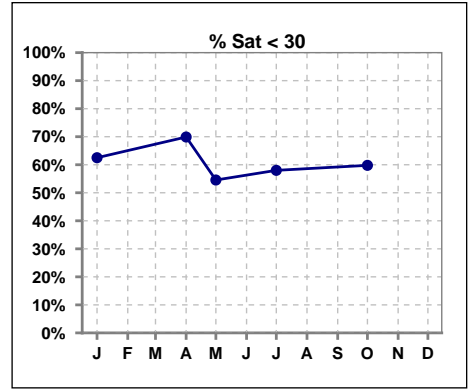
	Jan	Feb	Mar	Apr	May	Jun	Jul	Aug	Sep	Oct	Nov	Dec
# Ferritin	88			93	8		100			92		
# Ferritin > 1200	9			5	2		5			8		
Pop. Mean	782			654	1351		631			657		
Std. Deviation	894			828	2409		825			907		
% Ferritin > 1200	10%			5%	25%		5%			9%		



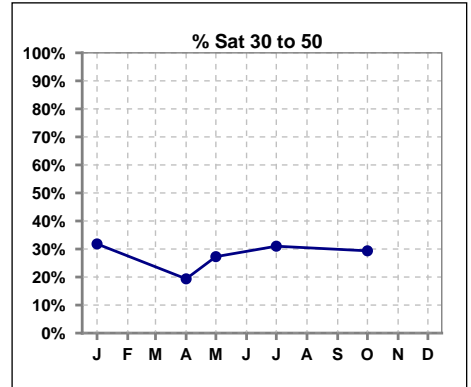
Methodology: a) All labs for 'Adequacy of Dialysis', 'Nutrition', 'Osteodystrophy', 'Anemia' and 'Diabetes' based on last value of month; b) BP's and #L processed are average of all values for month; c) Access data takes last access of month; d) Values for SGA and 'Infection Control' use most recent result.

V. ANEMIA - CONT.

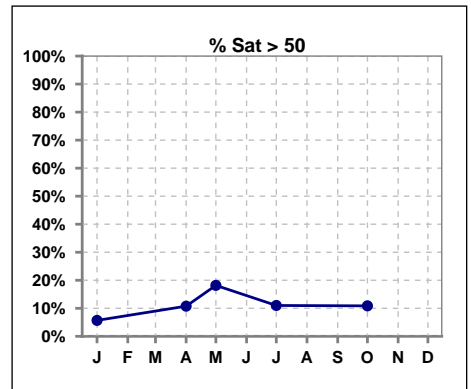
	Jan	Feb	Mar	Apr	May	Jun	Jul	Aug	Sep	Oct	Nov	Dec
# % Sat	88			93	11		100			92		
# % Sat < 30	55			65	6		58			55		
Pop. Mean	29			29	32		31			32		
Std. Deviation	19			22	17		19			20		
% % Sat < 30	63%			70%	55%		58%			60%		



	Jan	Feb	Mar	Apr	May	Jun	Jul	Aug	Sep	Oct	Nov	Dec
# % Sat	88			93	11		100			92		
# % Sat 30 to 50	28			18	3		31			27		
Pop. Mean	29			29	32		31			32		
Std. Deviation	19			22	17		19			20		
% % Sat 30 to 50	32%			19%	27%		31%			29%		



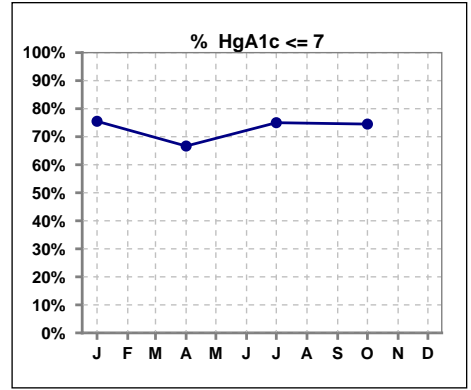
	Jan	Feb	Mar	Apr	May	Jun	Jul	Aug	Sep	Oct	Nov	Dec
# % Sat	88			93	11		100			92		
# % Sat > 50	5			10	2		11			10		
Pop. Mean	29			29	32		31			32		
Std. Deviation	19			22	17		19			20		
% % Sat > 50	6%			11%	18%		11%			11%		



Methodology: a) All labs for 'Adequacy of Dialysis', 'Nutrition', 'Osteodystrophy', 'Anemia' and 'Diabetes' based on last value of month; b) BP's and #L processed are average of all values for month; c) Access data takes last access of month; d) Values for SGA and 'Infection Control' use most recent result.

VI. Diabetes

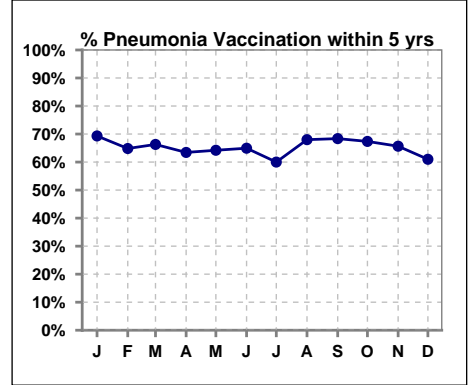
	Jan	Feb	Mar	Apr	May	Jun	Jul	Aug	Sep	Oct	Nov	Dec
# HgA1c	49			57			60			51		
# HgA1c <= 7	37			38			45			38		
Pop. Mean	6.6			6.5			6.4			6.5		
Std. Deviation	1.50			1.20			1.01			1.49		
% HgA1c <= 7	76%			67%			75%			75%		



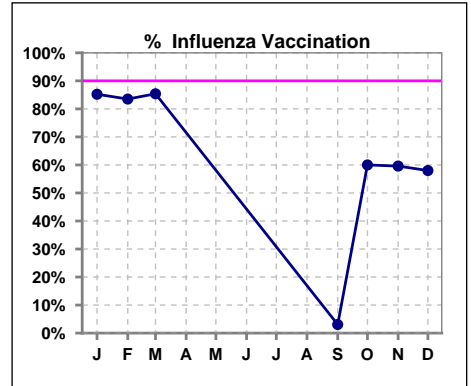
VII. Infection Control

Pneumonia vaccination within the past five years

	Jan	Feb	Mar	Apr	May	Jun	Jul	Aug	Sep	Oct	Nov	Dec
# Patient	88	91	89	93	95	97	100	100	98	95	99	100
# Pneumonia	61	59	59	59	61	63	60	68	67	64	65	61
% Pneumonia	69%	65%	66%	63%	64%	65%	60%	68%	68%	67%	66%	61%



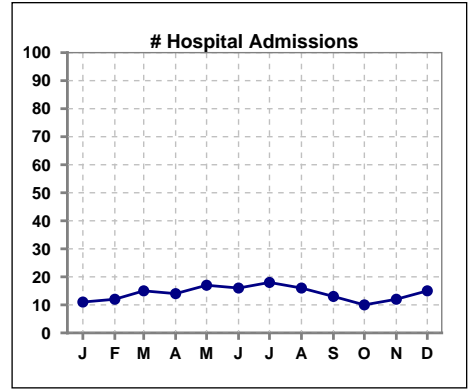
	Jan	Feb	Mar	Apr	May	Jun	Jul	Aug	Sep	Oct	Nov	Dec
# Patient	88	91	89						98	95	99	100
# Influenza	75	76	76						3	57	59	58
% Influenza	85%	84%	85%						3%	60%	60%	58%



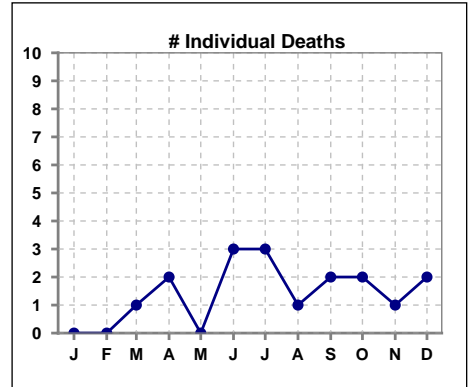
Methodology: a) All labs for 'Adequacy of Dialysis', 'Nutrition', 'Osteodystrophy', 'Anemia' and 'Diabetes' based on last value of month; b) BP's and #L processed are average of all values for month; c) Access data takes last access of month; d) Values for SGA and 'Infection Control' use most recent result.

VIII. Outcome measures

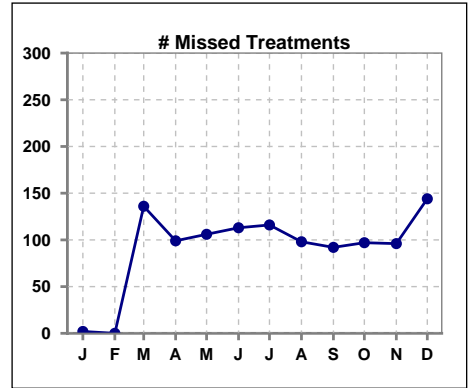
	Jan	Feb	Mar	Apr	May	Jun	Jul	Aug	Sep	Oct	Nov	Dec
# Patient	88	91	89	93	95	97	100	100	98	95	99	100
# Hospital Admissions	11	12	15	14	17	16	18	16	13	10	12	15



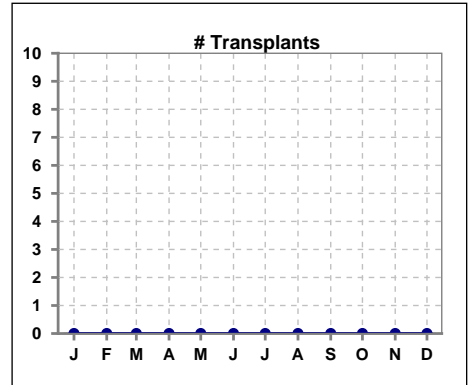
	Jan	Feb	Mar	Apr	May	Jun	Jul	Aug	Sep	Oct	Nov	Dec
# Patient	88	91	89	93	95	97	100	100	98	95	99	100
# Individual Deaths	0	0	1	2	0	3	3	1	2	2	1	2



	Jan	Feb	Mar	Apr	May	Jun	Jul	Aug	Sep	Oct	Nov	Dec
# Patient	88	91	89	93	95	97	100	100	98	95	99	100
# Missed Treatments	2	0	136	99	106	113	116	98	92	97	96	144



	Jan	Feb	Mar	Apr	May	Jun	Jul	Aug	Sep	Oct	Nov	Dec
# Patient	88	91	89	93	95	97	100	100	98	95	99	100
# Transplants	0	0	0	0	0	0	0	0	0	0	0	0



Methodology: a) All labs for 'Adequacy of Dialysis', 'Nutrition', 'Osteodystrophy', 'Anemia' and 'Diabetes' based on last value of month; b) BP's and #L processed are average of all values for month; c) Access data takes last access of month; d) Values for SGA and 'Infection Control' use most recent result.